

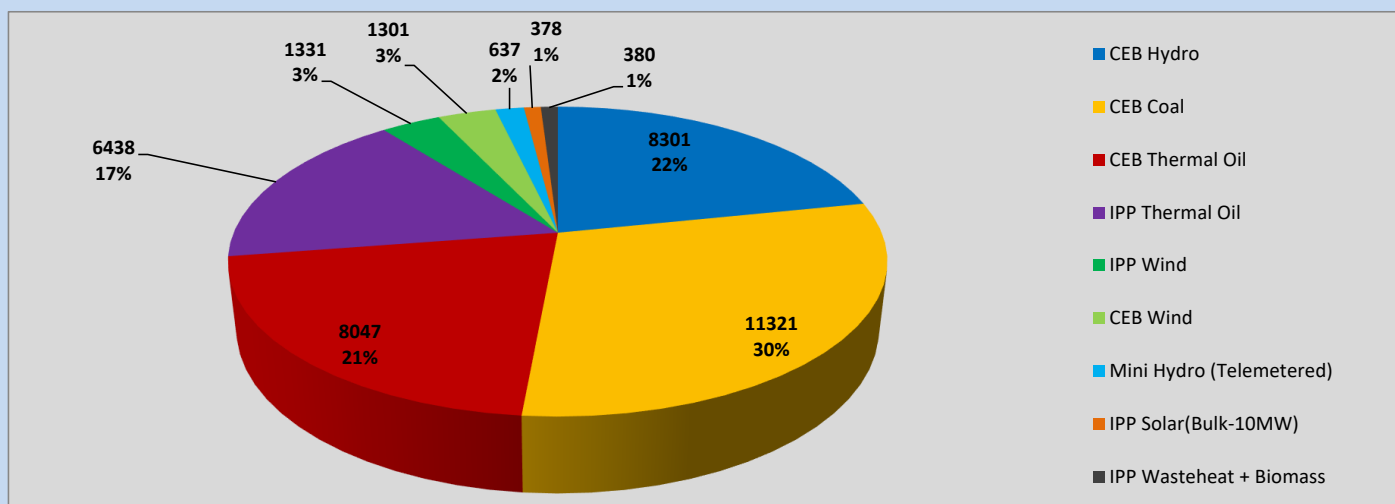
# Generation and Reservoirs Statistics

June 24, 2023



PUBLIC UTILITIES COMMISSION OF SRI LANKA

## Daily Generation Mix in MWh



Total Generation (Excluding estimated figures) =

38,134 MWh

### Estimated figures of CEB generation report

Estimated unserved energy = 0.00 GWh

Estimated Mini Hydro (Non telemetered) = 3343 MWh

Estimated IPP Solar PV (Bulk 1-10MW) = 304 MWh

Estimated Solar Roof Top PV = 1890 MWh

## Cumulative Dispatch

Following data excludes the contribution from roof top solar, non telemetered solar and mini hydro plants

### For Current Month

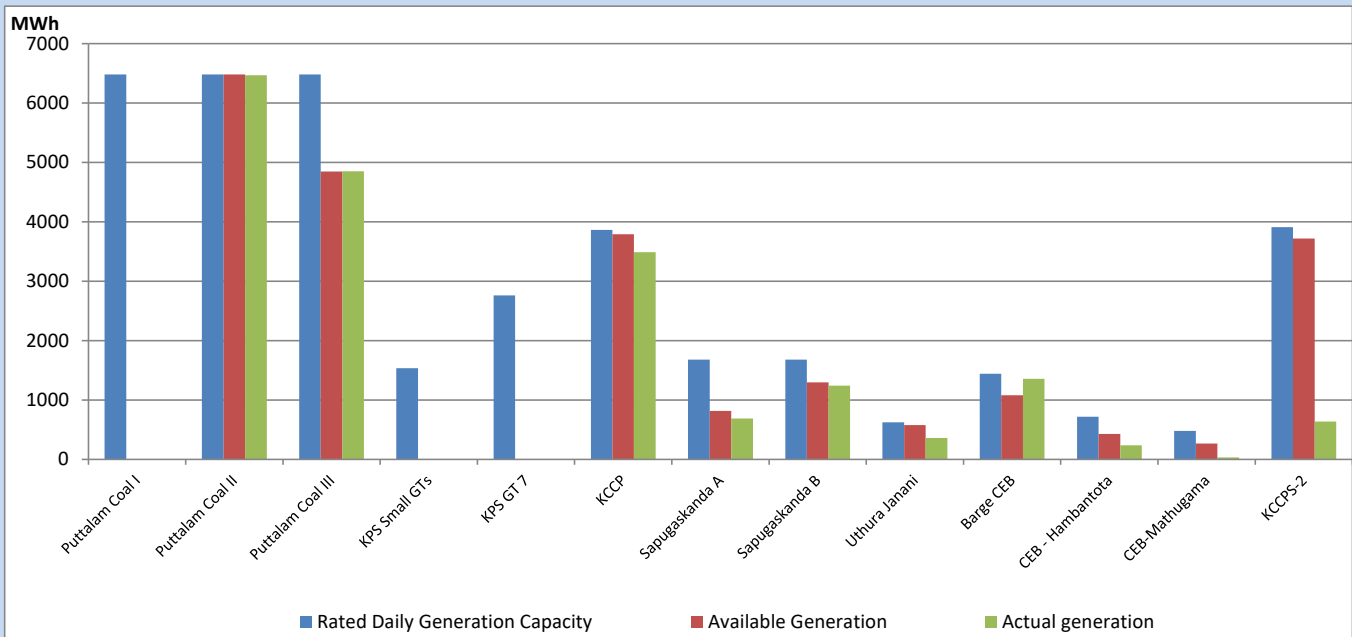
Category	Dispatch (GWh)	
CEB Hydro	209	21.72%
CEB Coal	321	33.40%
CEB Thermal Oil	185	19.23%
IPP Thermal	108	11.27%
SPP Wind	47	4.92%
CEB Wind	41	4.31%
Mini Hydro (Telemetered)	31	3.24%
IPP Solar (Bulk-10MW)	8	0.82%
IPP Wasteheat + BMP	10	1.07%
<b>Total</b>	<b>961</b>	

### For Current Year

Category	Dispatch (GWh)	
CEB Hydro	1,689	25.14%
CEB Coal	2,816	41.91%
CEB Thermal Oil	1,032	15.36%
IPP Thermal	625	9.31%
SPP Wind	138	2.05%
CEB Wind	153	2.27%
Mini Hydro (Telemetered)	157	2.34%
IPP Solar (Bulk-10MW)	51	0.76%
IPP Wasteheat	57	0.85%
<b>Total</b>	<b>6,719</b>	

## CEB owned Thermal Plant Dispatch

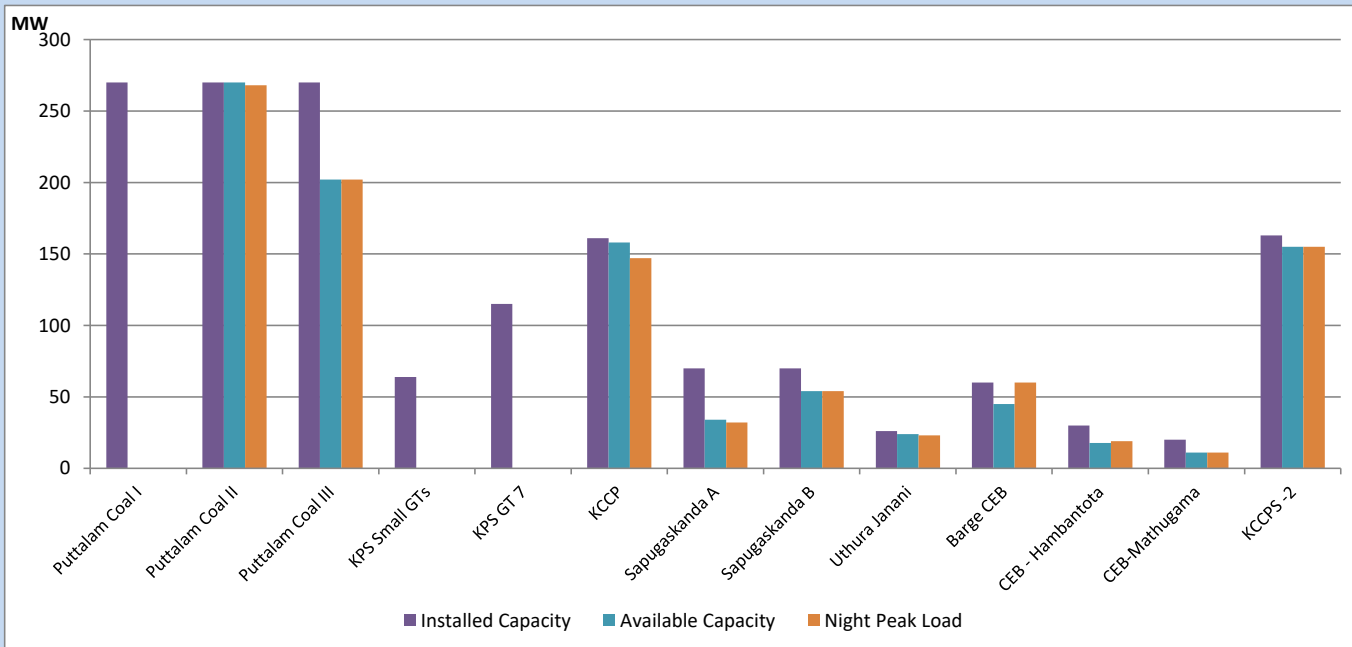
June 24, 2023



Available Generation is estimated based on plant availability at 6.00am on

June 25, 2023

## CEB owned Thermal Plant Loading at the Night Peak



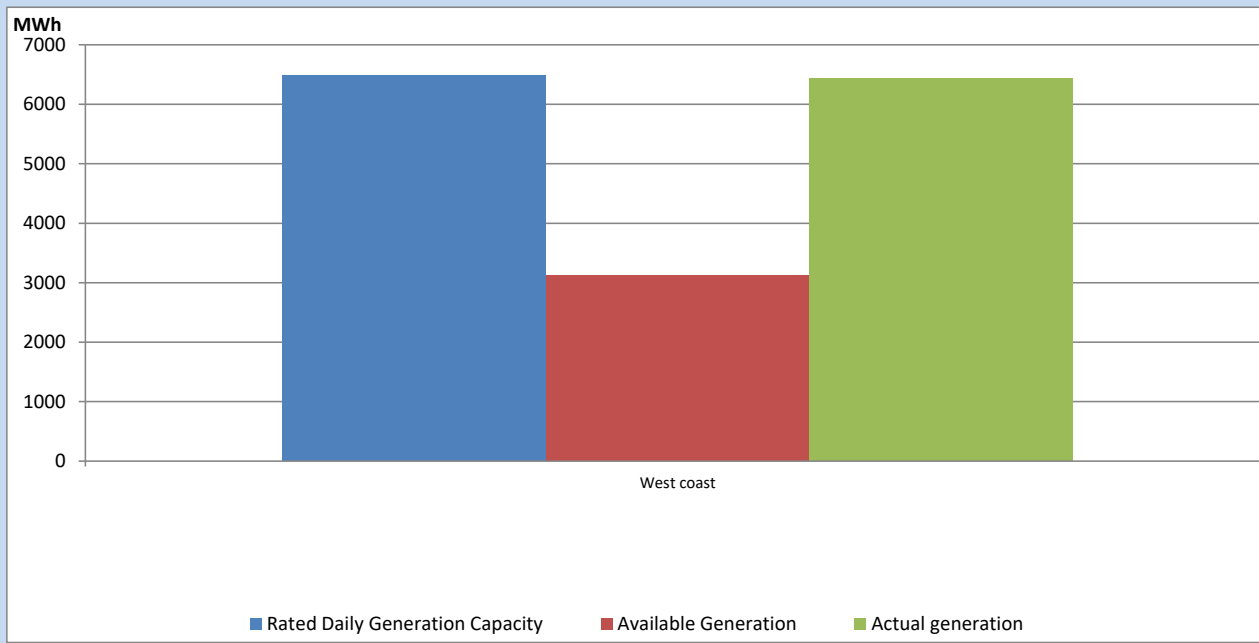
Note-

Plant availability is recorded at 6.00 am on

June 25, 2023

## IPP owned Thermal Plant Dispatch

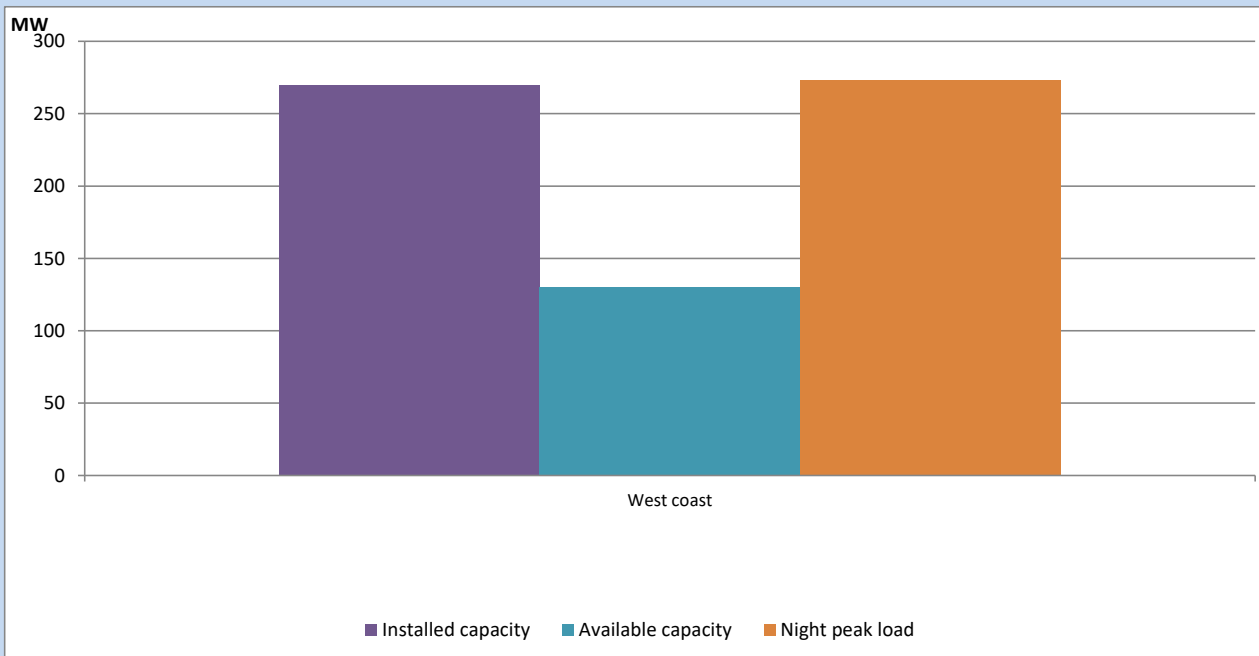
June 24, 2023



Available Generation is estimated based on plant availability at 6.00am on

June 25, 2023

## IPP owned Thermal Plant Loading at the Night Peak

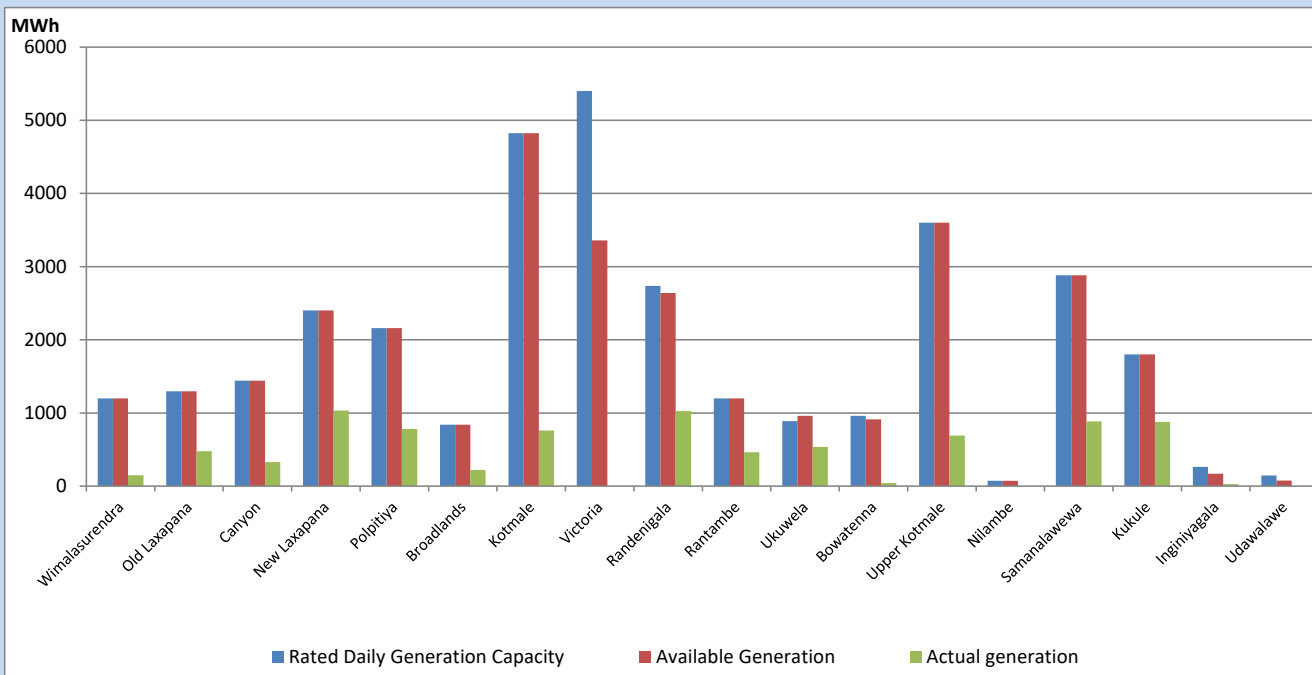


Note- Plant availability is recorded at 6.00 am on

June 25, 2023

## Major Hydro Plant Dispatch

June 24, 2023

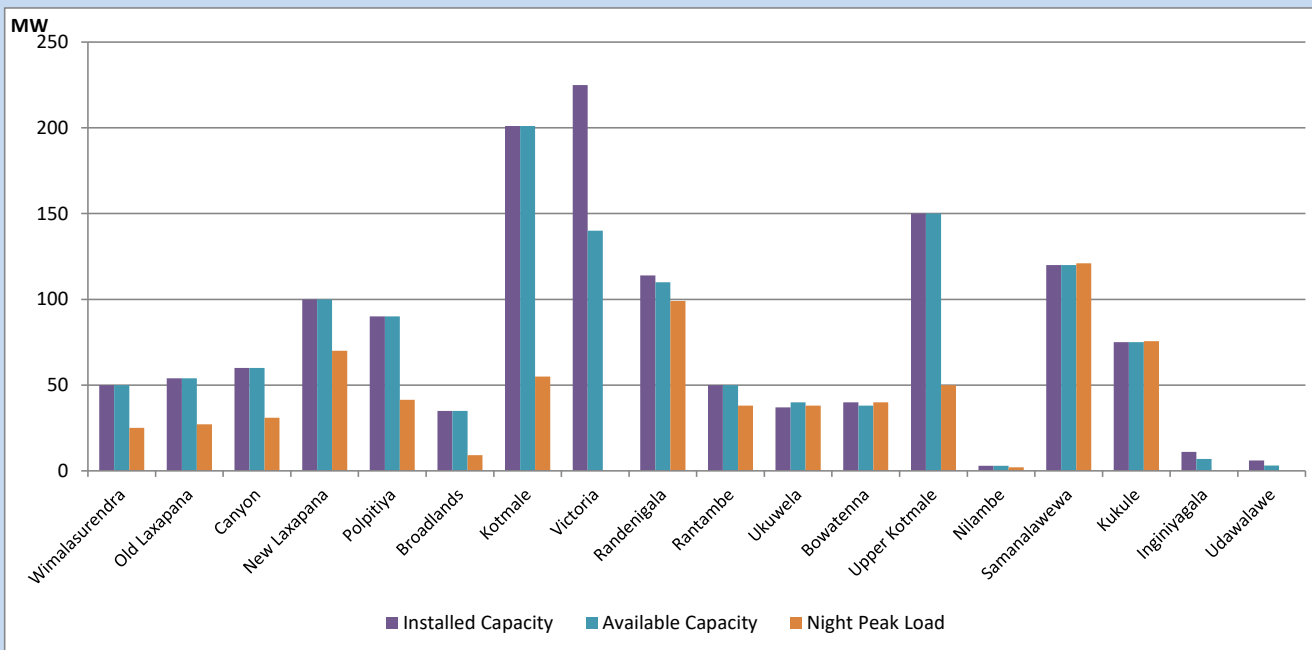


Available Generation is estimated based on plant availability at 6.00am on  
Broadlands power plant is operating in the Commissioning Stage

June 25, 2023

## Major Hydro Plant Loading at Night Peak

June 24, 2023



Note- Plant availability is recorded at 6.00 am on June 25, 2023

Broadlands power plant is operating in the Commissioning Stage

## Summary of Major Plant performance

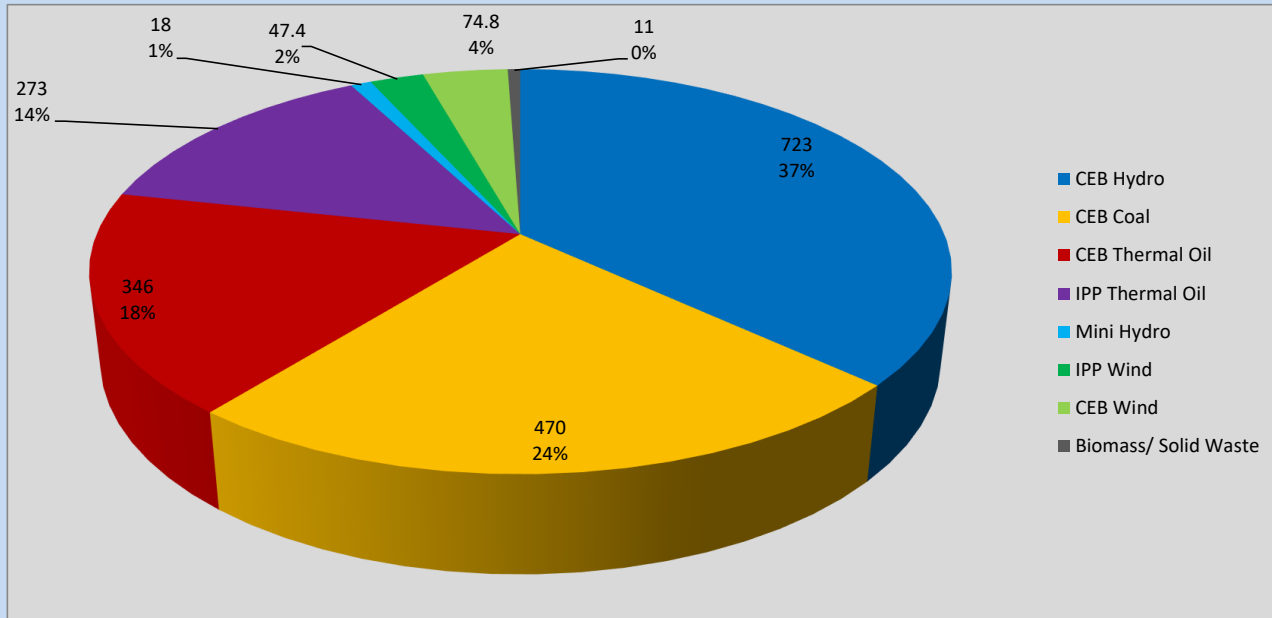
Plant	Installed Capacity	Plant Availability	Night peak Load	Plant Dispatch
	(MW)	(MW)	(MW)	(MWh)
Wimalasurendra	50	50	25	149
Old Laxapana	54	54	27	476
Canyon	60	60	31	329
New Laxapana	100	100	70	1,033
Polpitiya	90	90	41	781
Broadlands	35	35	9	221
Kotmale	201	201	55	760
Victoria	225	140	0	0
Randenigala	114	110	99	1,025
Rantambe	50	50	38	462
Ukuwela	37	40	38	537
Bowatenna	40	38	40	42
Upper Kotmale	150	150	50	692
Nilambe	3	3	2	3
Samanalawewa	120	120	121	886
Kukule	75	75	76	878
Inginiyagala	11	7	0	27
Udawalawe	6	3	0	0
Puttalam Coal I	270	0	0	0
Puttalam Coal II	270	270	268	6,469
Puttalam Coal III	270	202	202	4,852
KPS Small GTs	64	0	0	0
KPS GT 7	115	0	0	0
KCCP	161	158	147	3,488
Sapugaskanda A	70	34	32	688
Sapugaskanda B	70	54	54	1,243
Uthura Janani	26	24	23	360
Barge CEB	60	45	60	1,358
CEB-Hambantota	30	18	19	239
CEB-Mathugama	20	11	11	34
ACE Matara	24	0	0	0
Asia Power	50	0	0	0
KCCPS -2	163	155	155	637
West Coast	270	130	273	6,438
Nothern Power	36	0	0	0
ACE Embilipitiya	93	0	0	0
<b>Total</b>	<b>3,483</b>	<b>2,427</b>	<b>2,117</b>	<b>38,134</b>

Plant availability is the availability recorded at 6 am on

June 25, 2023

## Contribution to the Night Peak in MW

June 24, 2023

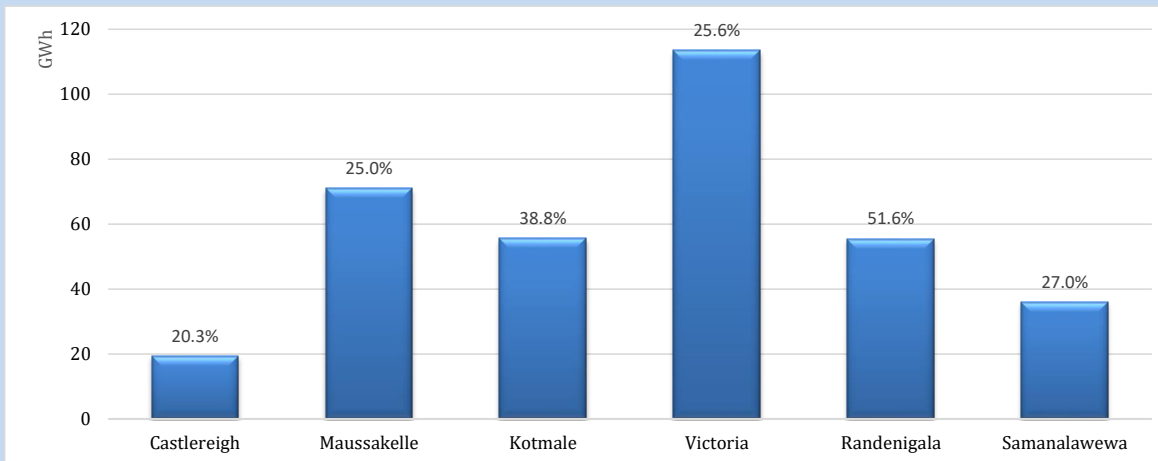


Night Peak*	2,118 MW
Day Peak Maximum Demand	1,623 MW
Day Peak Minimum Demand	1,437 MW
Off Peak Minimum Demand	1,276 MW

Above figures are excluding contribution from roof top solar, non telemetered solar and mini hydro plants

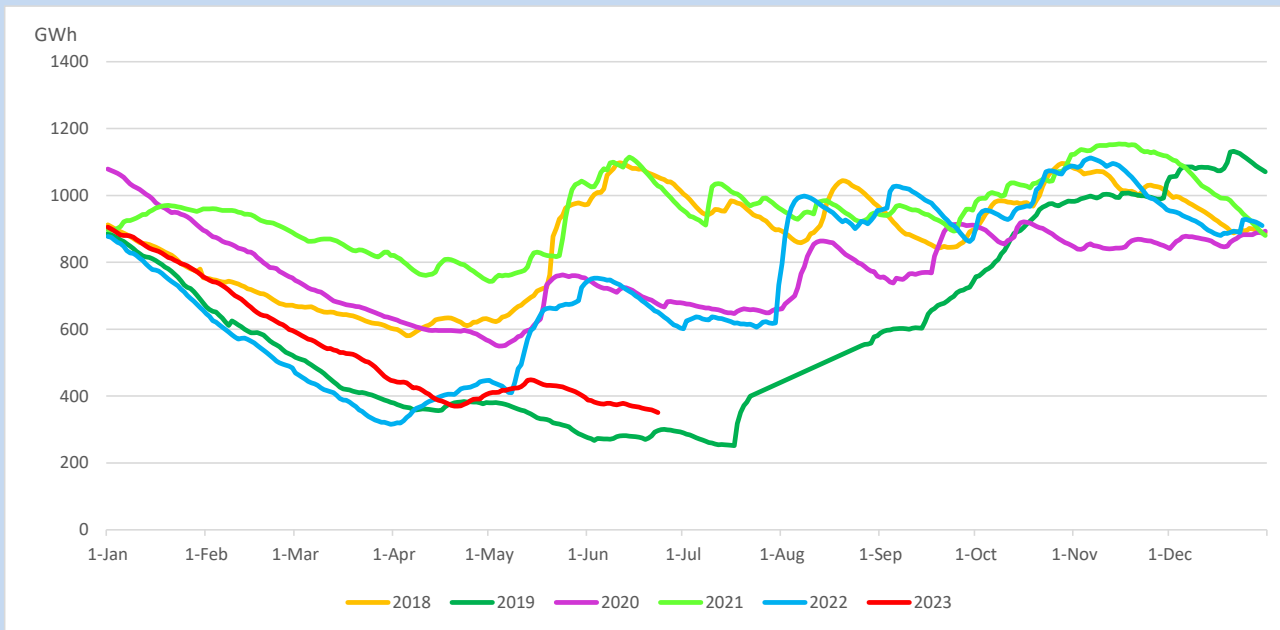
## Reservoir Levels -

as at 06.00 Hr on June 25, 2023

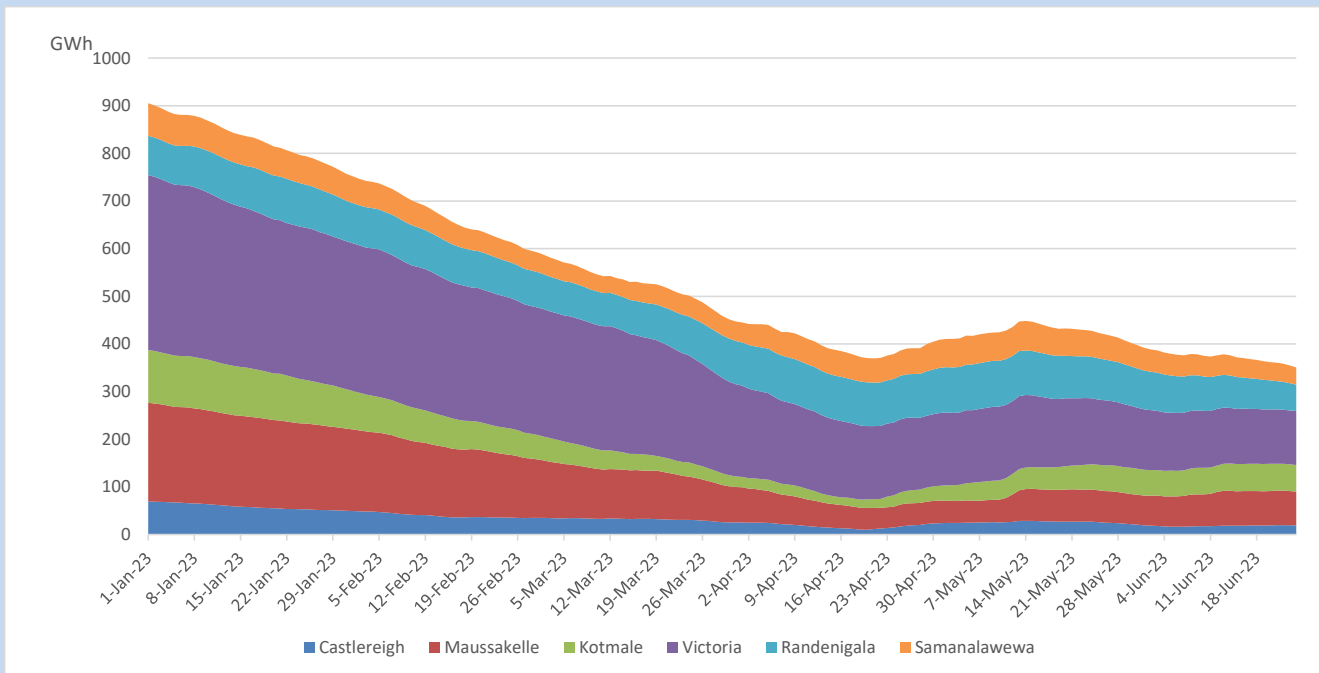


Total Reservoir Level	350.7 GWh
% of Total capacity	29.1%

## Comparison of Total Reservoir Storage Levels with Past Years

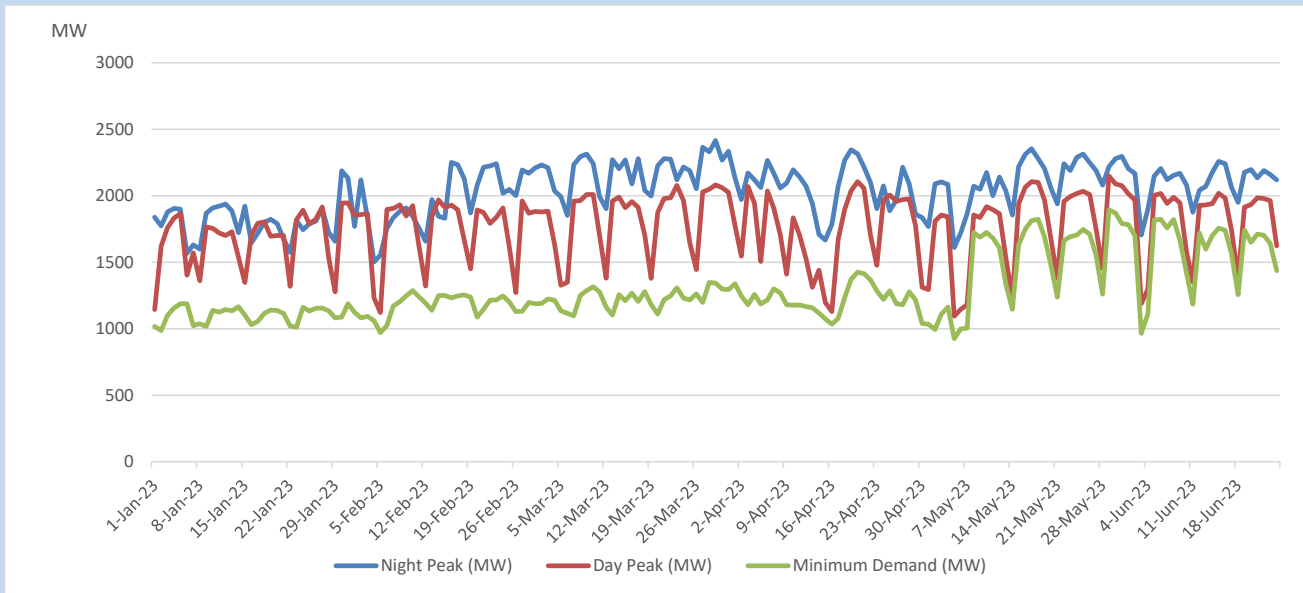


## Variation of Major Hydro Reservoir Levels in the current year (GWh)





## Variation of Demand during the current year

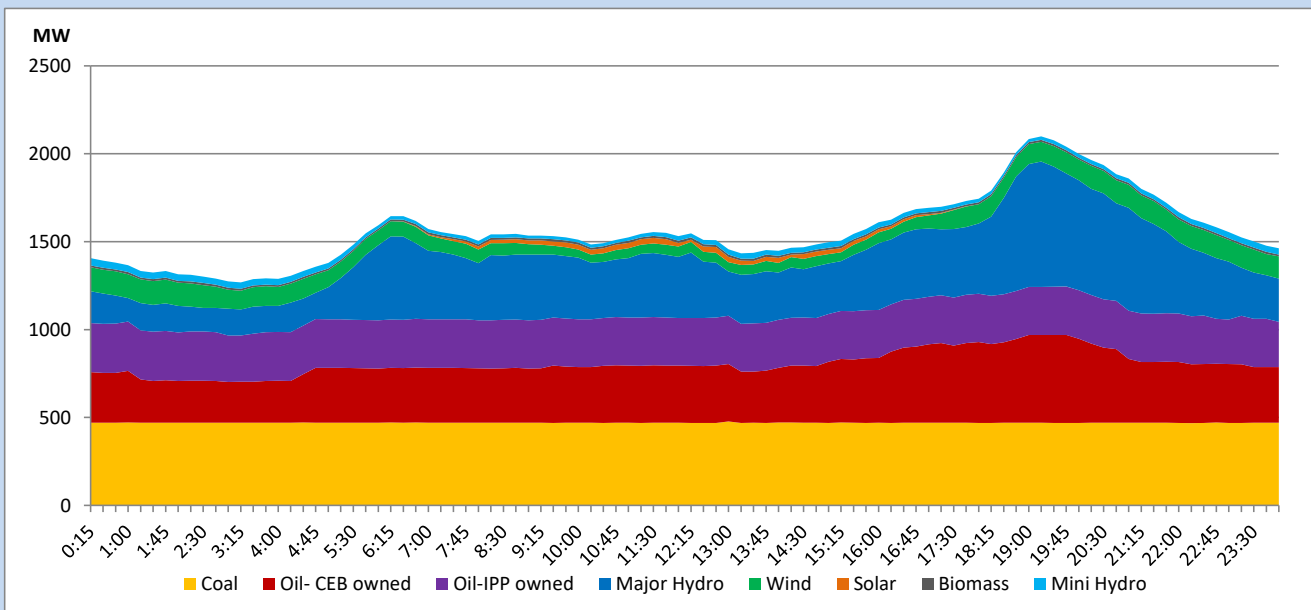


The above figures are excluding contribution from roof top solar, non telemetered solar and mini hydro plants

## Daily Load Curve

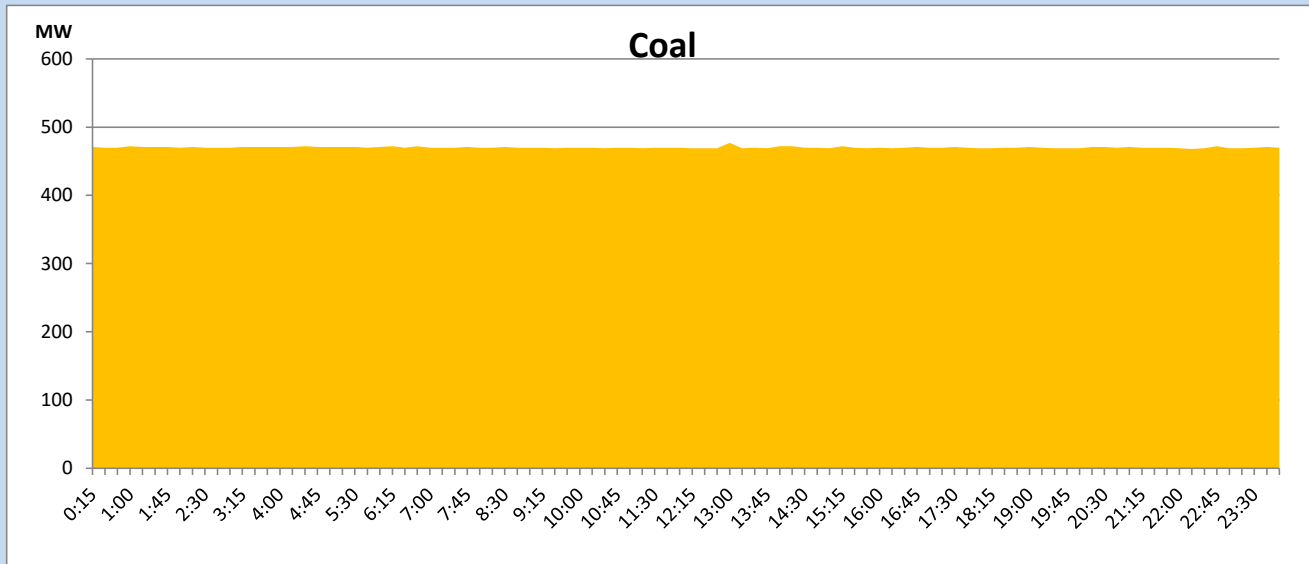
June 24, 2023

Solar and wind data is based on Telemetered Power Stations only



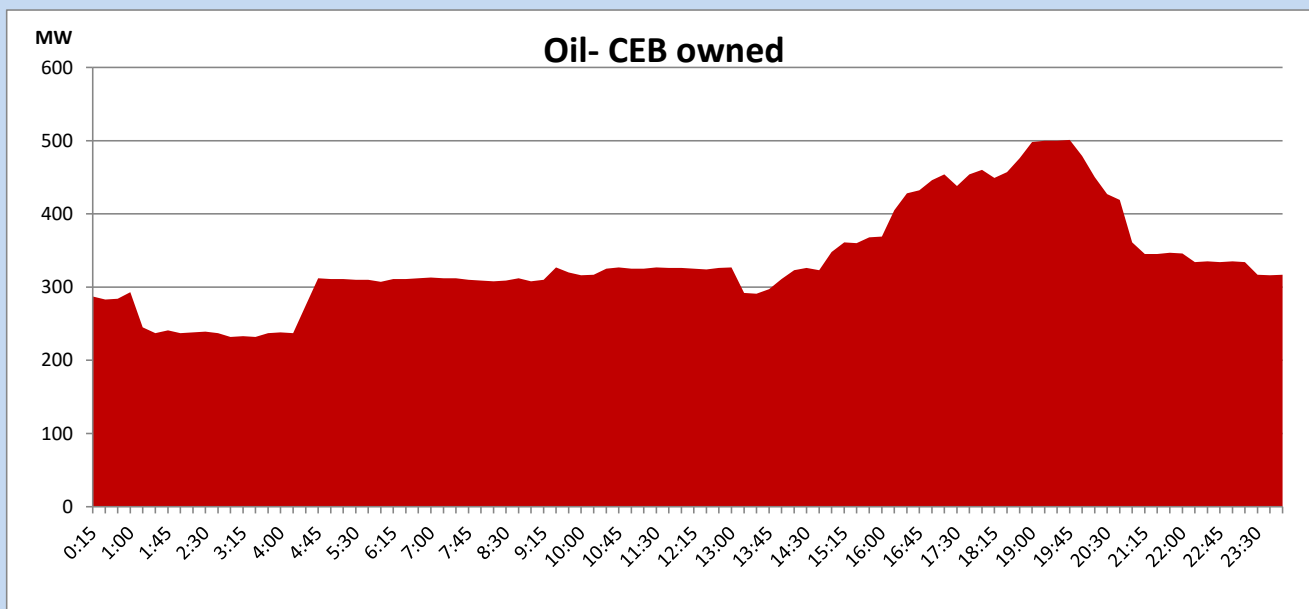
## Coal Generation during

June 24, 2023



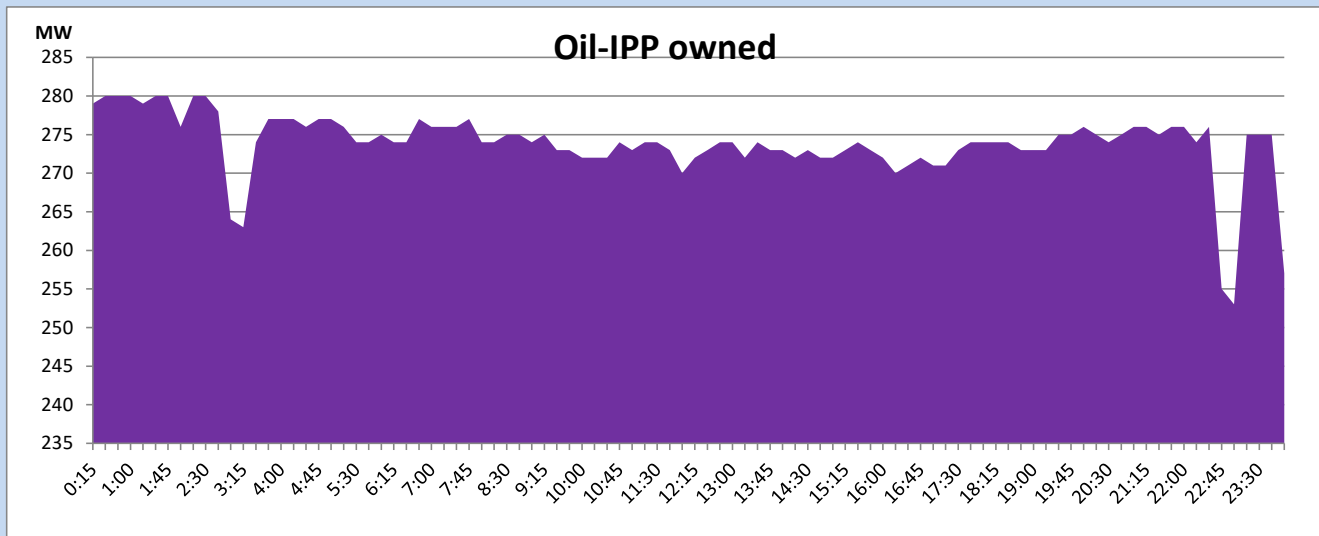
## CEB Oil Plant Generation during

June 24, 2023



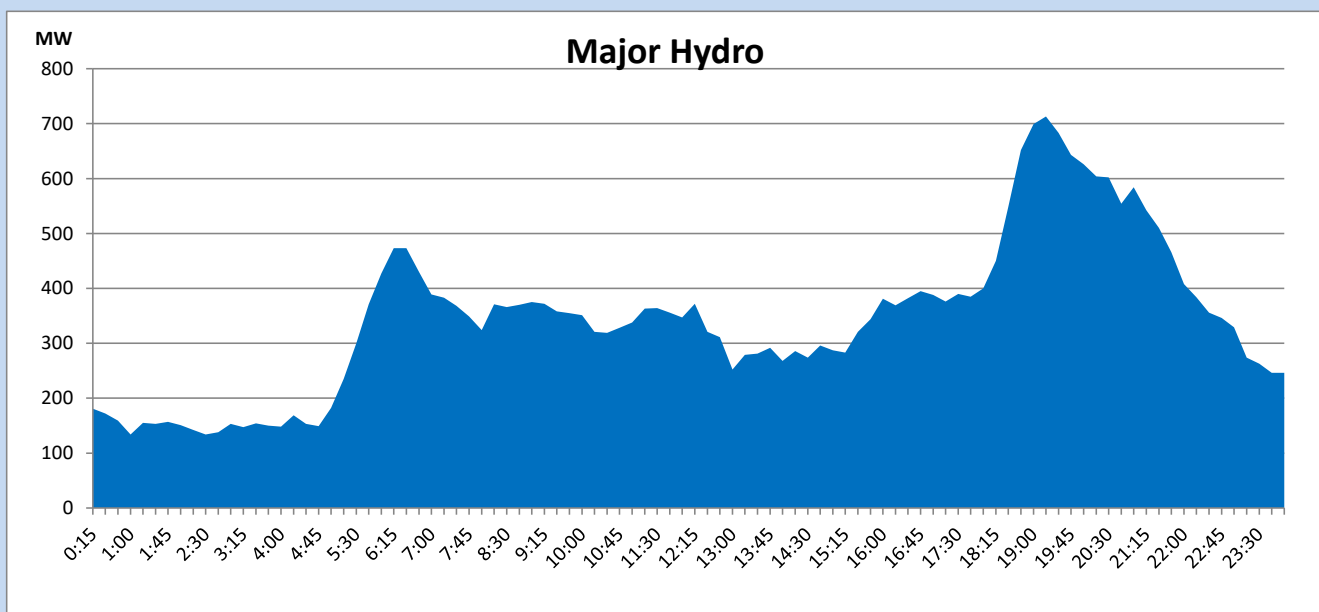
## IPP Oil Plant Generation during

June 24, 2023



## Major Hydro Generation during

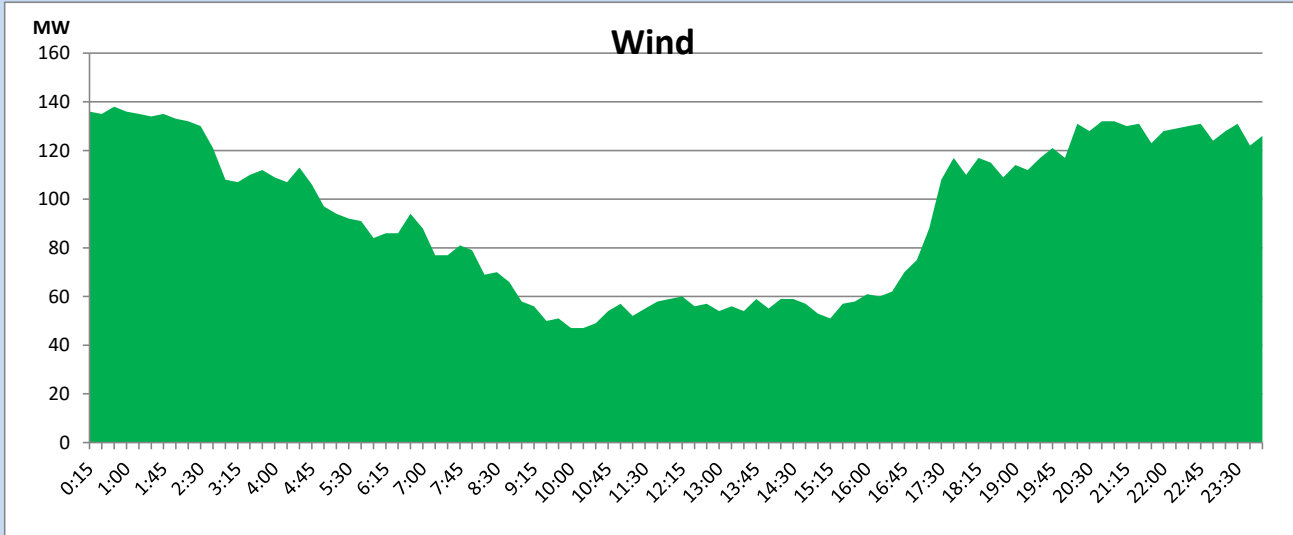
June 24, 2023



## Wind Generation during

June 24, 2023

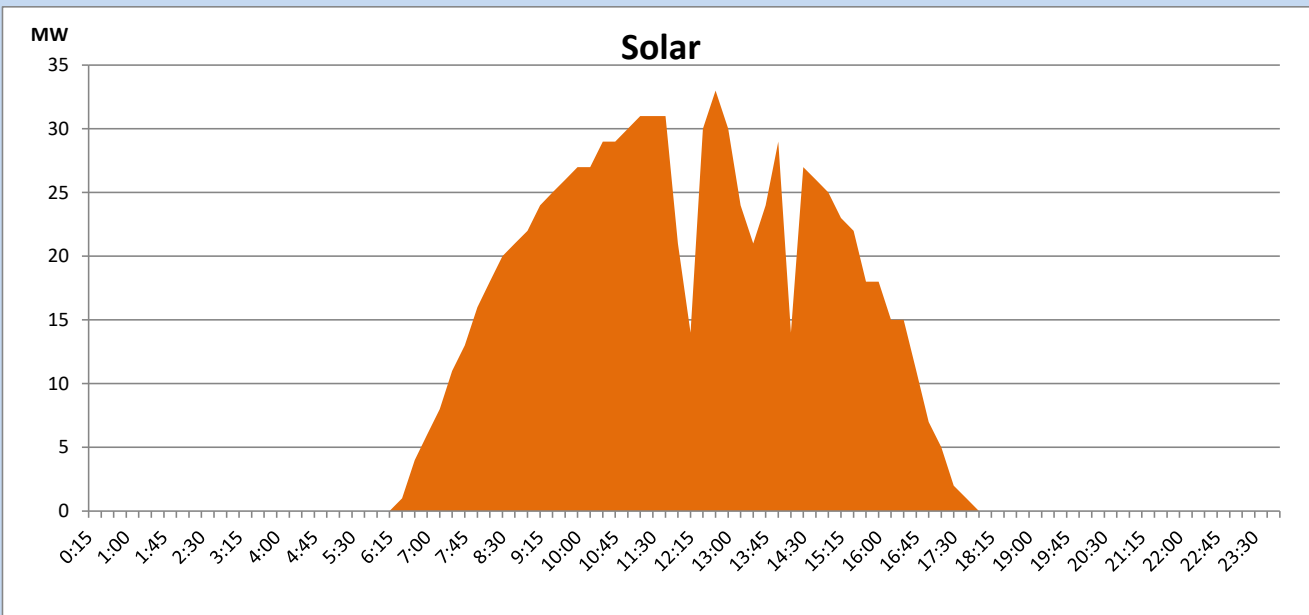
Based on Telemetered Power Stations only



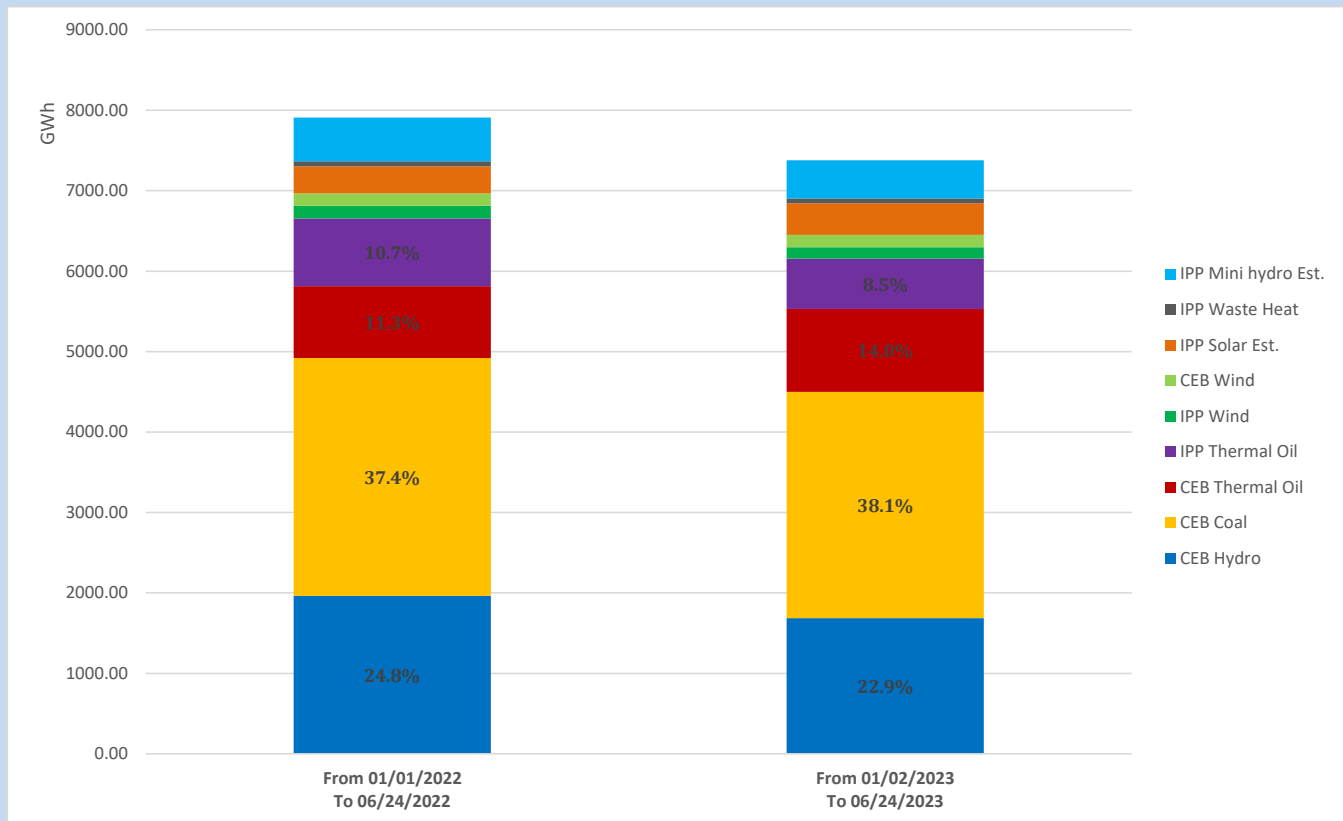
## Solar Generation during

June 24, 2023

Based on Telemetered Power Stations only



## Cumulative Dispatch Comparison with Last Year



The above figures are including contribution from roof top solar, non telemetered solar and mini hydro plants

**Thermal Plant Fuel types**

<b>Power Station</b>	<b>Primary Fuel</b>
<b>CEB Thermal</b>	
<b>Sapugaskanda 1</b>	Heavy Fuel
<b>Sapugaskanda 2</b>	Heavy Fuel
<b>Kelanitissa Small Gas Turbines</b>	Auto Diesel
<b>GT 7 - Kelanitissa</b>	Auto Diesel
<b>Kelanitissa CCY</b>	Naphtha or Diesel
<b>Lakvijaya 1</b>	Coal
<b>Lakvijaya 2</b>	Coal
<b>Lakvijaya 3</b>	Coal
<b>Uthuru Janani</b>	Heavy Fuel
<b>Barge CEB</b>	Heavy Fuel
<b>KCCPS -2</b>	Auto Diesel

<b>Power Station</b>	<b>Primary Fuel</b>
<b>Private Thermal</b>	
<b>West Coast</b>	Auto Diesel / Heavy Fuel

**Major Incidents reported during the day**

June 24, 2023

Nil.