

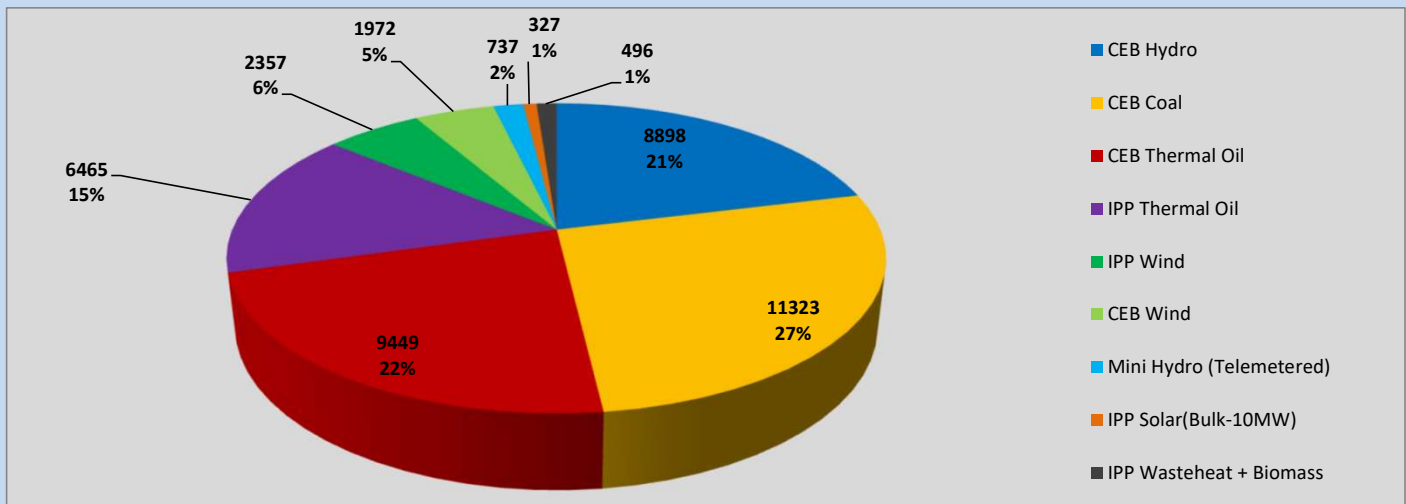
# Generation and Reservoirs Statistics

June 23, 2023



**PUBLIC UTILITIES COMMISSION OF SRI LANKA**

## Daily Generation Mix in MWh



Total Generation (Excluding estimated figures) =

42,024 MWh

### Estimated figures of CEB generation report

Estimated unserved energy = 0.00 GWh  
 Estimated Mini Hydro (Non telemetered) = 3343 MWh  
 Estimated IPP Solar PV (Bulk 1-10MW) = 304 MWh  
 Estimated Solar Roof Top PV = 1890 MWh

## Cumulative Dispatch

Following data excludes the contribution from roof top solar, non telemetered solar and mini hydro plants

### For Current Month

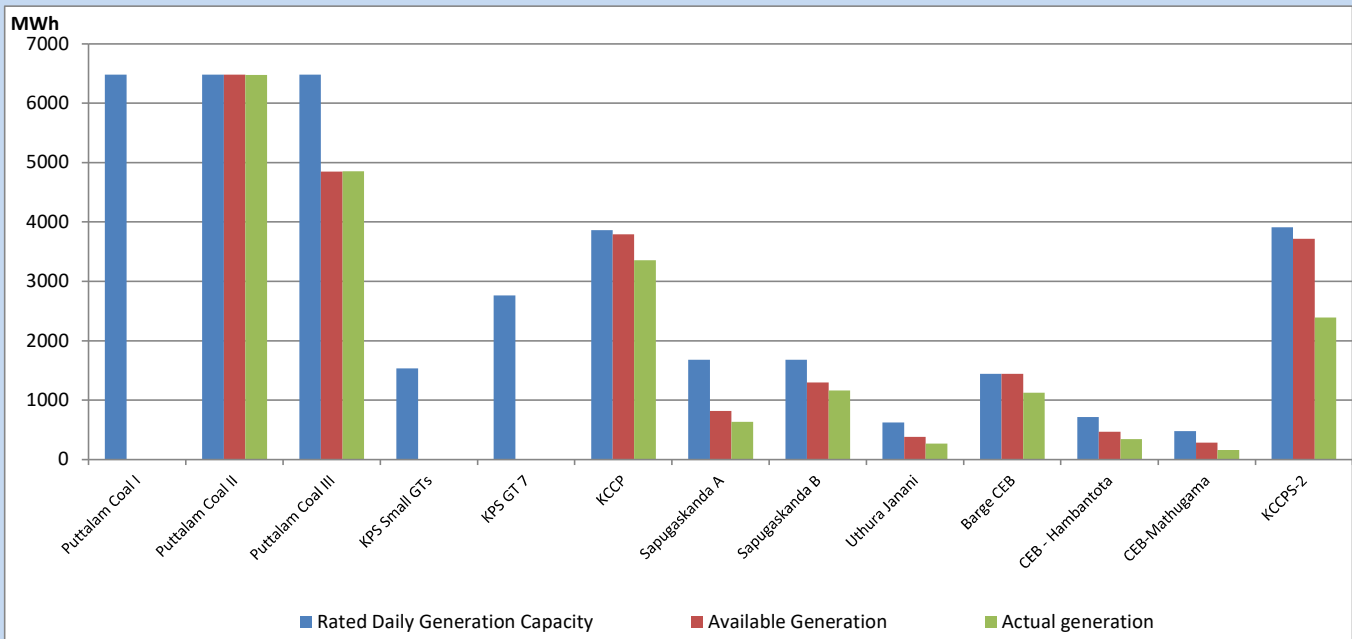
Category	Dispatch (GWh)	
CEB Hydro	201	21.72%
CEB Coal	310	33.55%
CEB Thermal Oil	177	19.15%
IPP Thermal	102	11.04%
SPP Wind	46	4.98%
CEB Wind	40	4.35%
Mini Hydro (Telemetered)	31	3.31%
IPP Solar(Bulk-10MW)	8	0.82%
IPP Wasteheat + BMP	10	1.08%
<b>Total</b>	<b>923</b>	

### For Current Year

Category	Dispatch (GWh)	
CEB Hydro	1,681	25.16%
CEB Coal	2,805	41.98%
CEB Thermal Oil	1,024	15.33%
IPP Thermal	619	9.26%
SPP Wind	137	2.04%
CEB Wind	151	2.26%
Mini Hydro (Telemetered)	156	2.34%
IPP Solar(Bulk-10MW)	51	0.76%
IPP Wasteheat	57	0.85%
<b>Total</b>	<b>6,681</b>	

## CEB owned Thermal Plant Dispatch

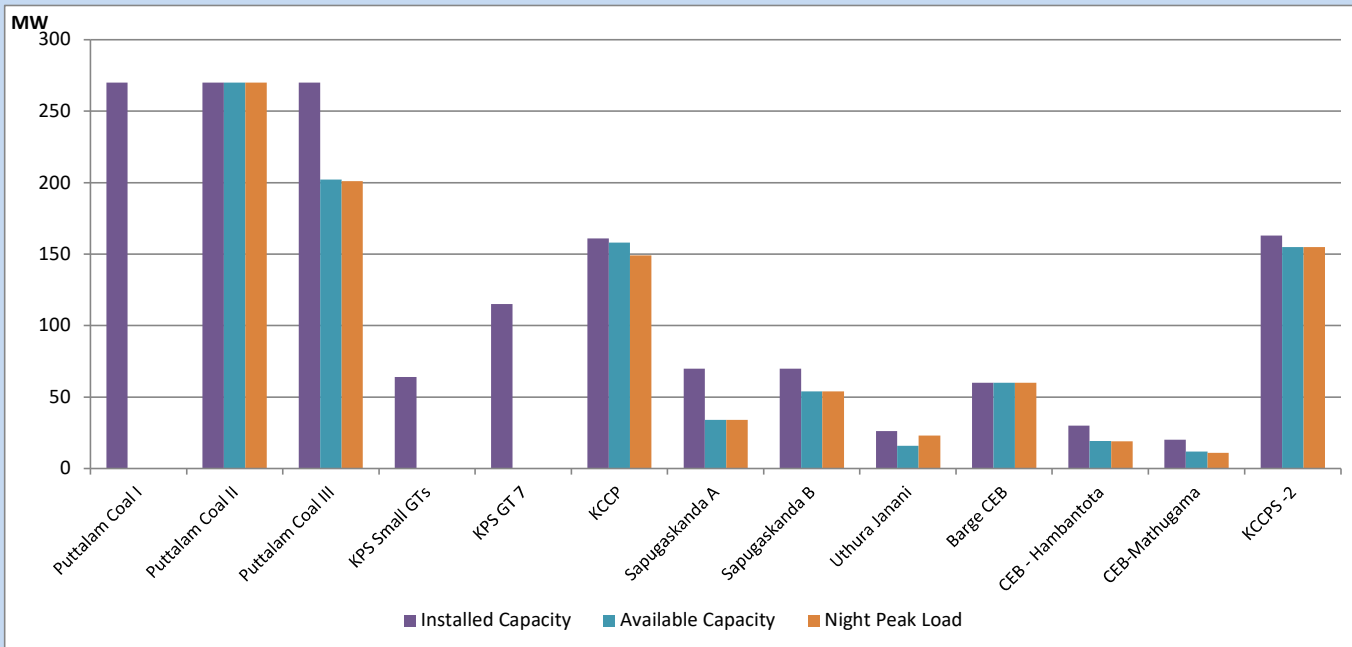
June 23, 2023



Available Generation is estimated based on plant availability at 6.00am on

June 24, 2023

## CEB owned Thermal Plant Loading at the Night Peak



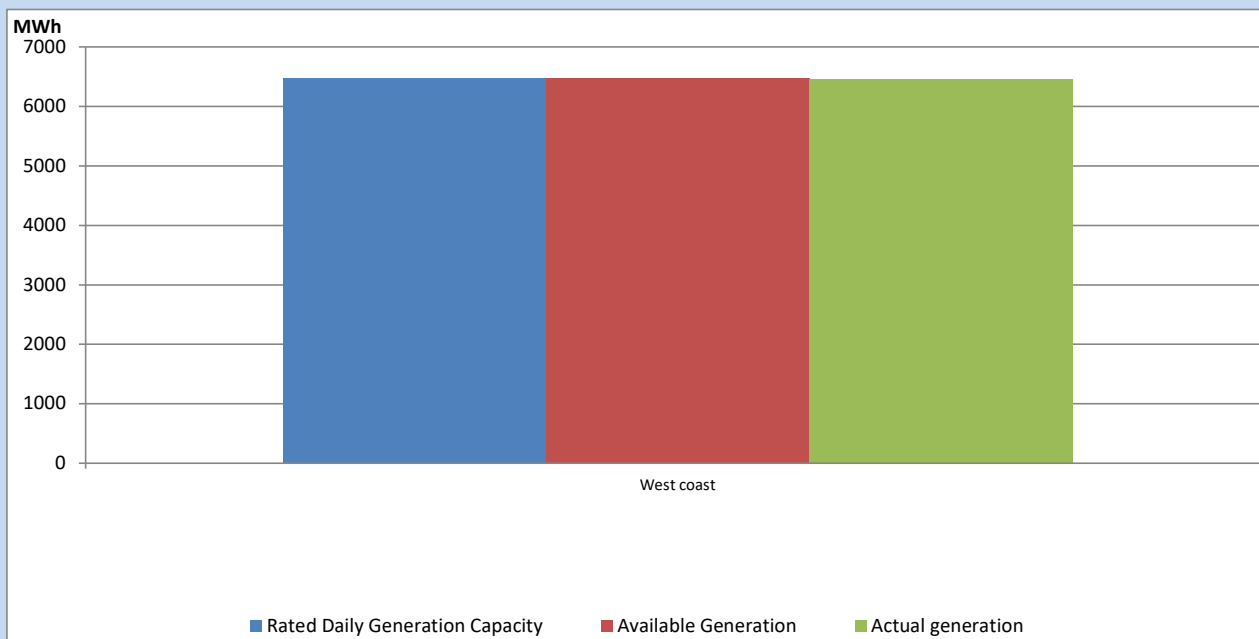
Note-

Plant availability is recorded at 6.00 am on

June 24, 2023

## IPP owned Thermal Plant Dispatch

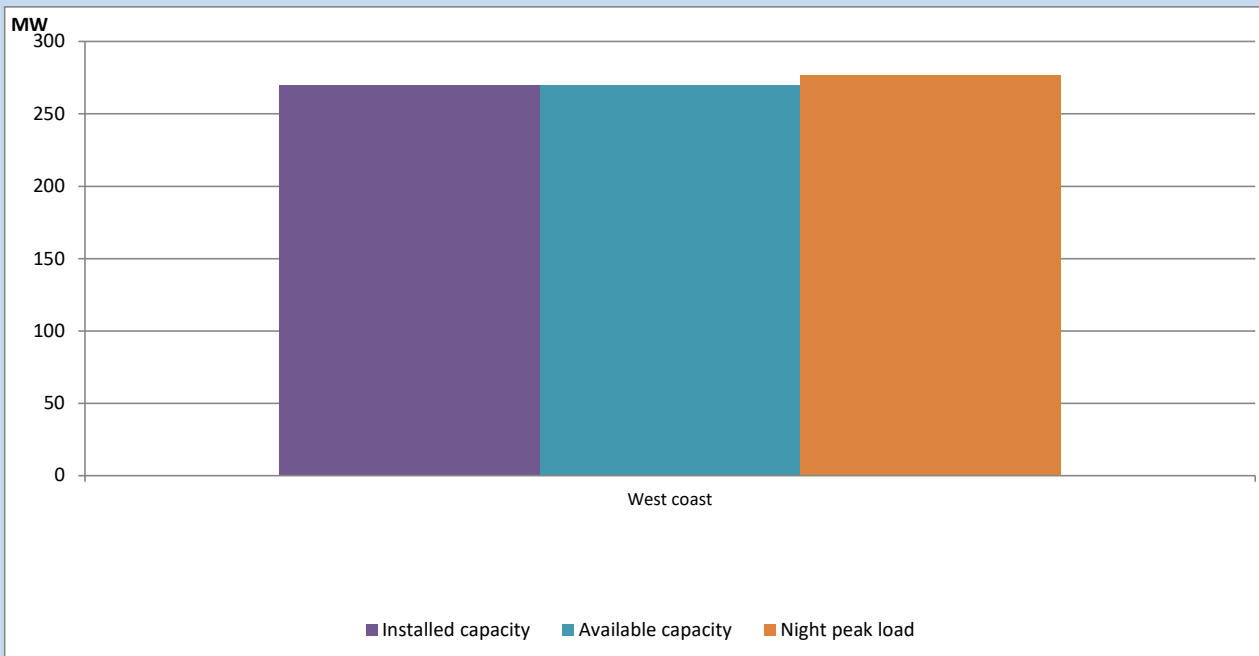
June 23, 2023



Available Generation is estimated based on plant availability at 6.00am on

June 24, 2023

## IPP owned Thermal Plant Loading at the Night Peak

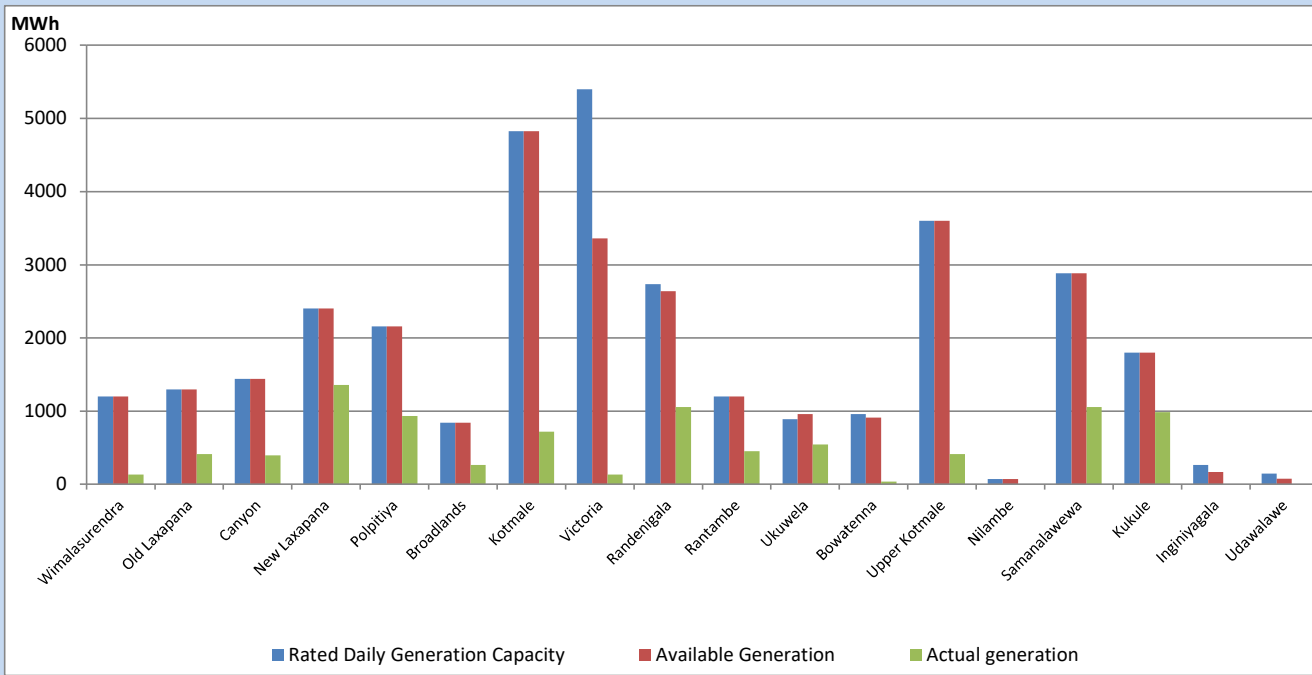


Note- Plant availability is recorded at 6.00 am on

June 24, 2023

## Major Hydro Plant Dispatch

June 23, 2023

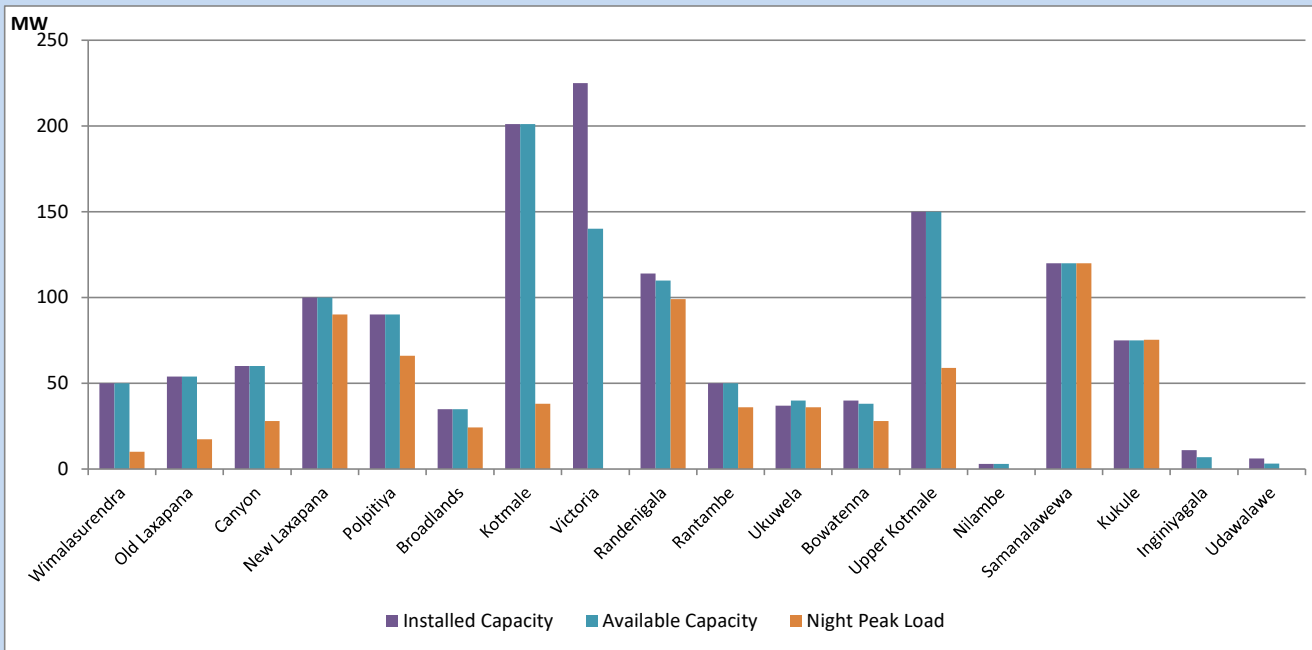


Available Generation is estimated based on plant availability at 6.00am on  
Broadlands power plant is operating in the Commissioning Stage

June 24, 2023

## Major Hydro Plant Loading at Night Peak

June 23, 2023



Note- Plant availability is recorded at 6.00 am on  
Broadlands power plant is operating in the Commissioning Stage

June 24, 2023

## Summary of Major Plant performance

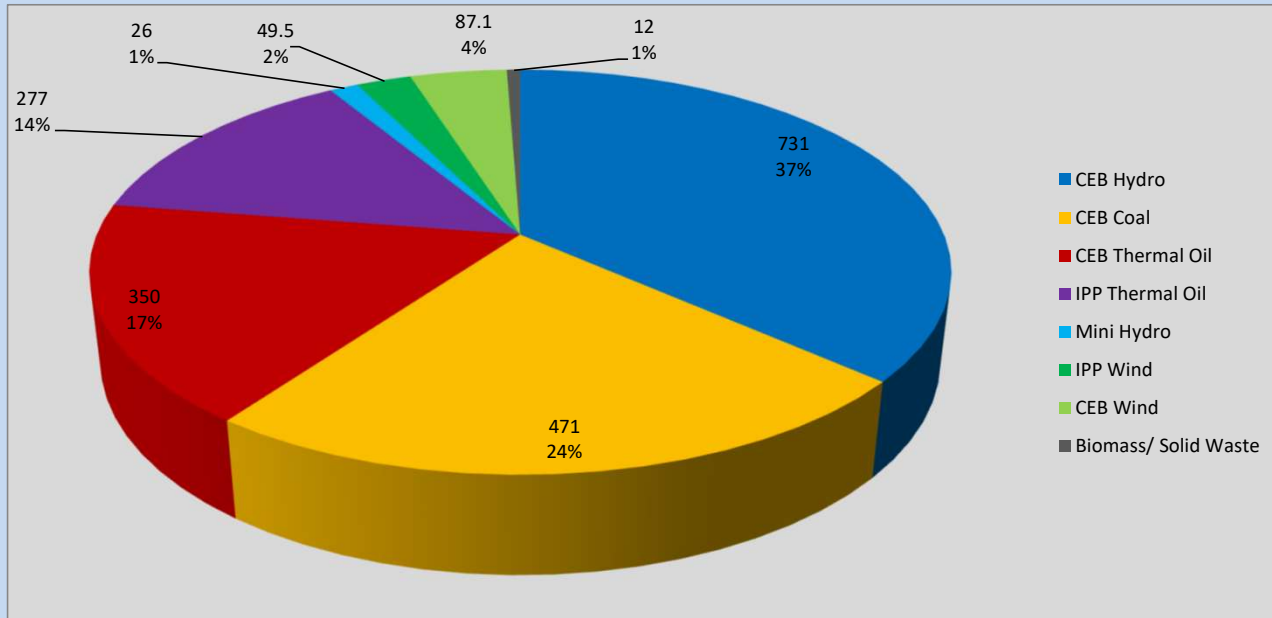
Plant	Installed Capacity	Plant Availability	Night peak Load	Plant Dispatch
	(MW)	(MW)	(MW)	(MWh)
Wimalasurendra	50	50	10	130
Old Laxapana	54	54	17	416
Canyon	60	60	28	394
New Laxapana	100	100	90	1,359
Polpitiya	90	90	66	932
Broadlands	35	35	24	265
Kotmale	201	201	38	720
Victoria	225	140	0	136
Randenigala	114	110	99	1,053
Rantambe	50	50	36	454
Ukuwela	37	40	36	543
Bowatenna	40	38	28	37
Upper Kotmale	150	150	59	412
Nilambe	3	3	0	3
Samanalawewa	120	120	120	1,058
Kukule	75	75	75	986
Inginiyagala	11	7	0	0
Udawalawe	6	3	0	0
Puttalam Coal I	270	0	0	0
Puttalam Coal II	270	270	270	6,473
Puttalam Coal III	270	202	201	4,850
KPS Small GTs	64	0	0	0
KPS GT 7	115	0	0	0
KCCP	161	158	149	3,356
Sapugaskanda A	70	34	34	634
Sapugaskanda B	70	54	54	1,164
Uthura Janani	26	16	23	272
Barge CEB	60	60	60	1,127
CEB-Hambantota	30	19	19	344
CEB-Mathugama	20	12	11	162
ACE Matara	24	0	0	0
Asia Power	50	0	0	0
KCCPS -2	163	155	155	2,390
West Coast	270	270	277	6,465
Nothern Power	36	0	0	0
ACE Embilipitiya	93	0	0	0
<b>Total</b>	<b>3,483</b>	<b>2,576</b>	<b>2,154</b>	<b>42,024</b>

Plant availability is the availability recorded at 6 am on

June 24, 2023

## Contribution to the Night Peak in MW

June 23, 2023

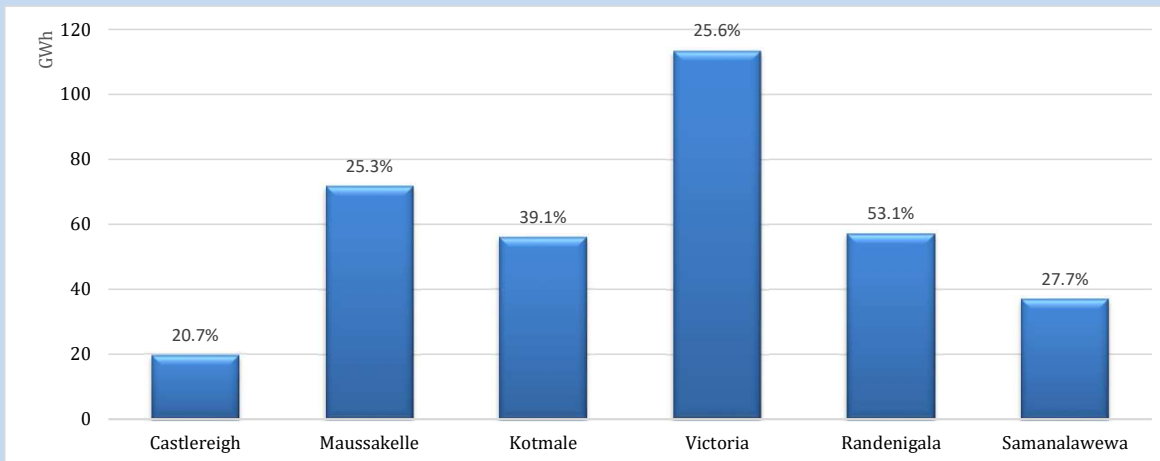


Night Peak*	2,158 MW
Day Peak Maximum Demand	1,964 MW
Day Peak Minimum Demand	1,640 MW
Off Peak Minimum Demand	1,262 MW

Above figures are excluding contribution from roof top solar, non telemetered solar and mini hydro plants

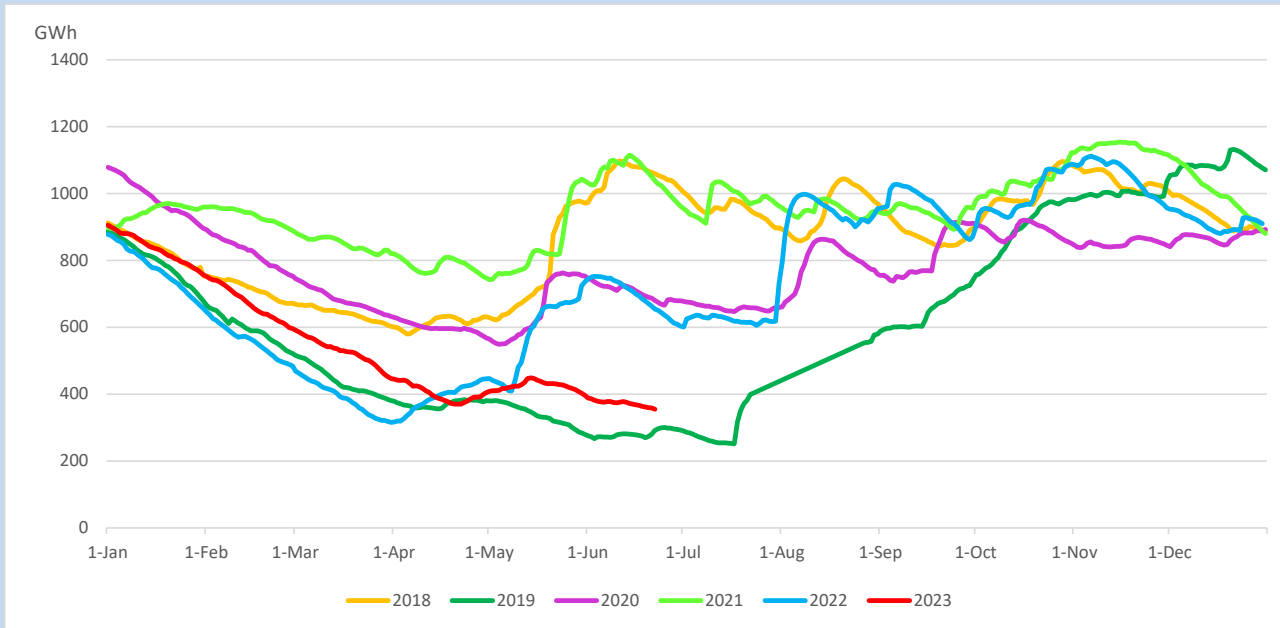
## Reservoir Levels -

as at 06.00 Hr on June 24, 2023

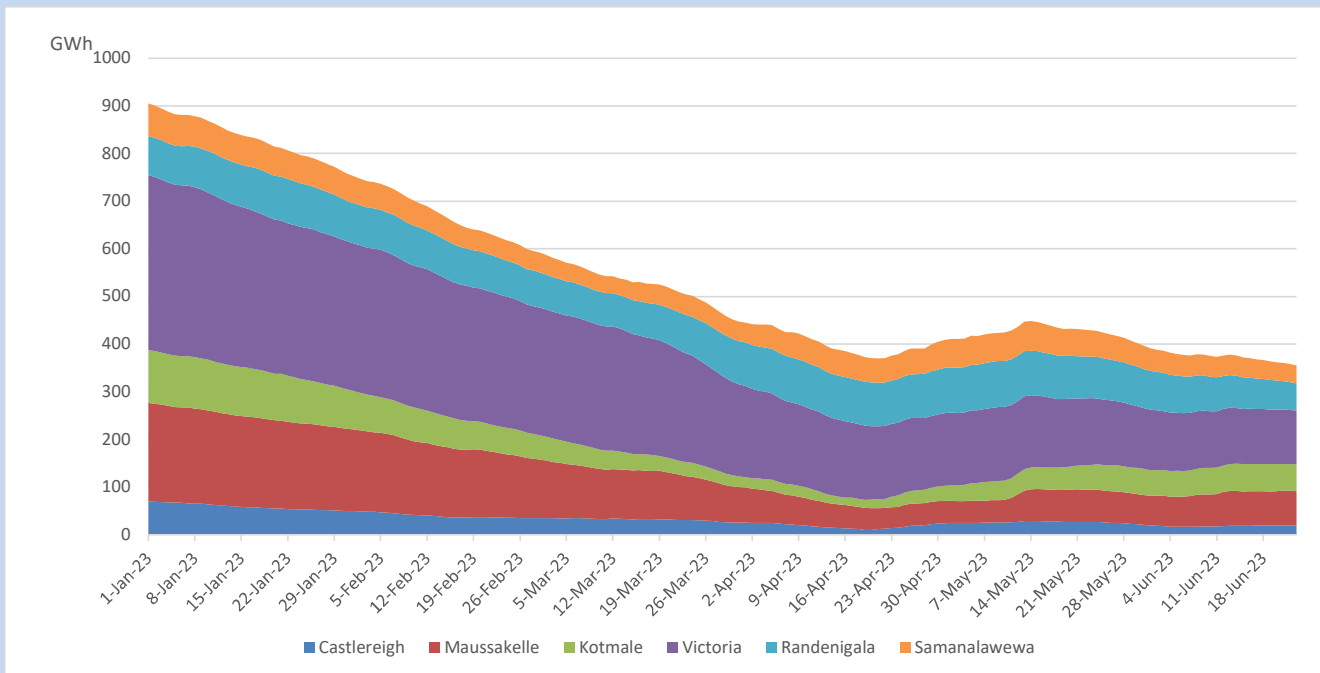


Total Reservoir Level	354.7 GWh
% of Total capacity	29.4%

## Comparison of Total Reservoir Storage Levels with Past Years

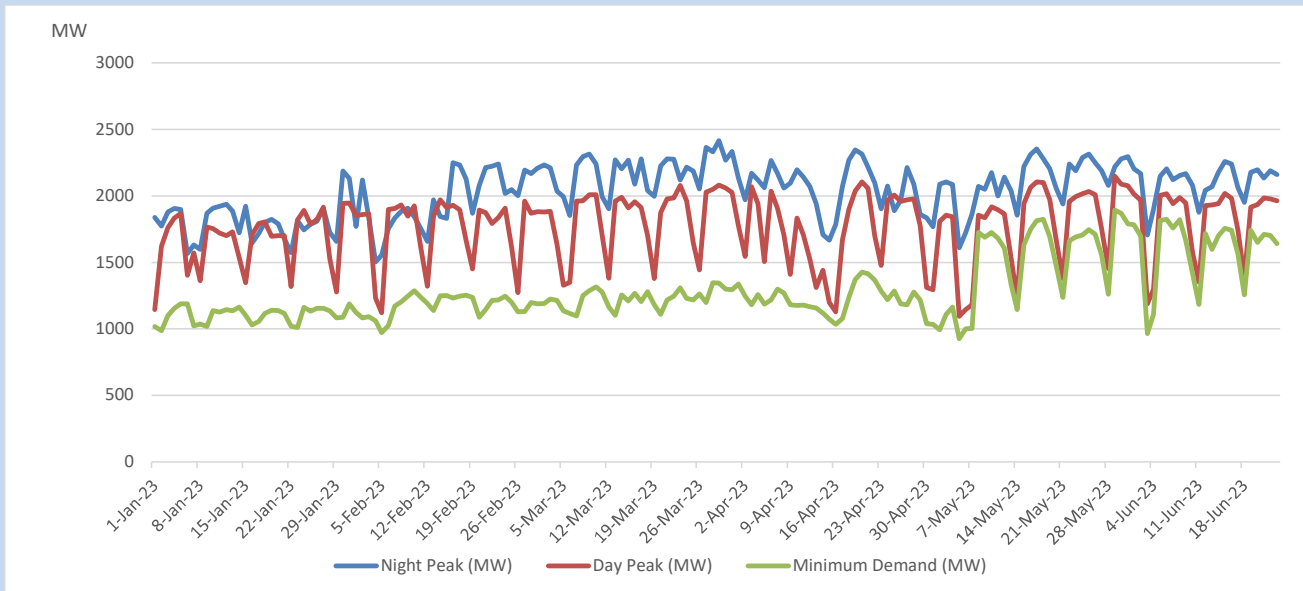


## Variation of Major Hydro Reservoir Levels in the current year (GWh)





## Variation of Demand during the current year

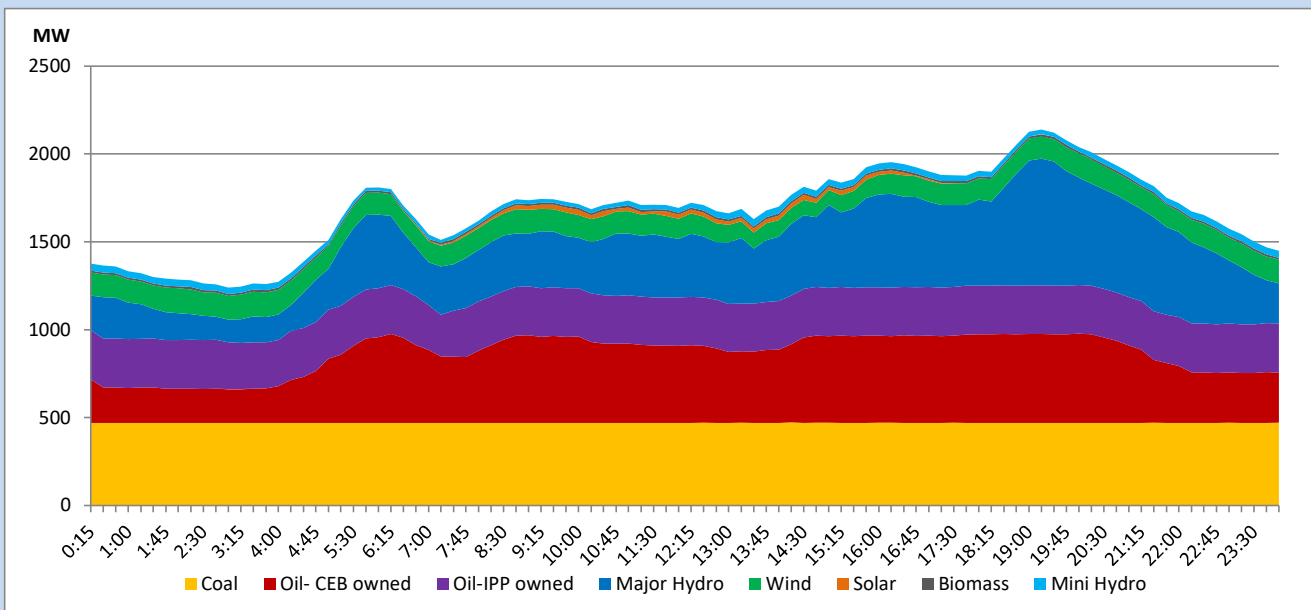


The above figures are excluding contribution from roof top solar, non telemetered solar and mini hydro plants

## Daily Load Curve

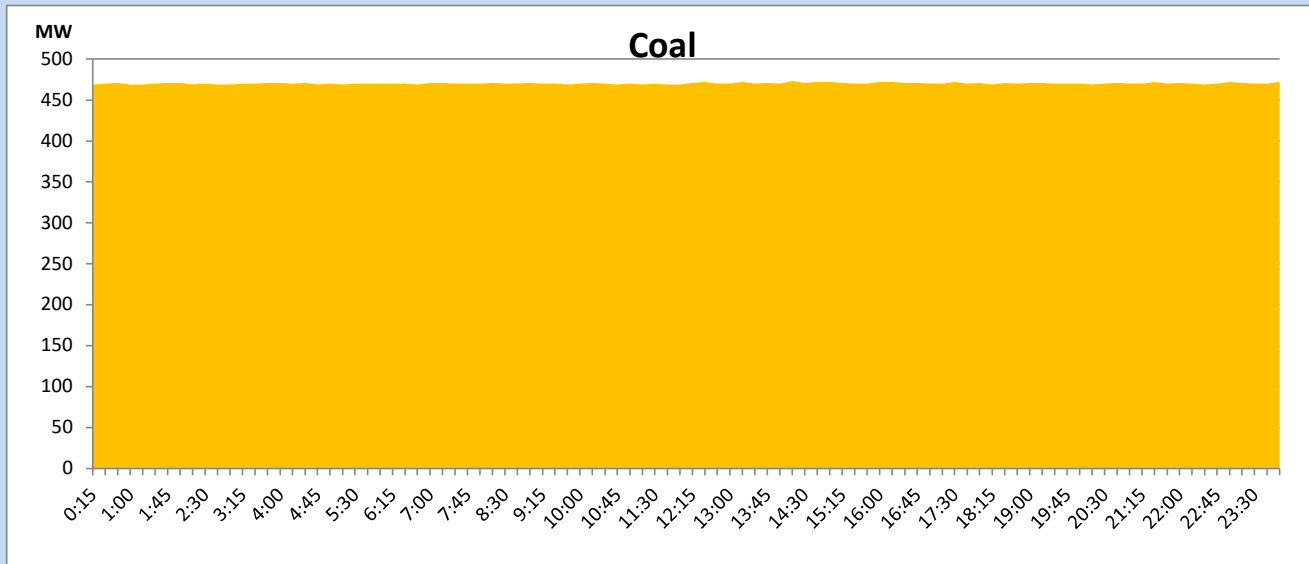
June 23, 2023

Solar and wind data is based on Telemetered Power Stations only



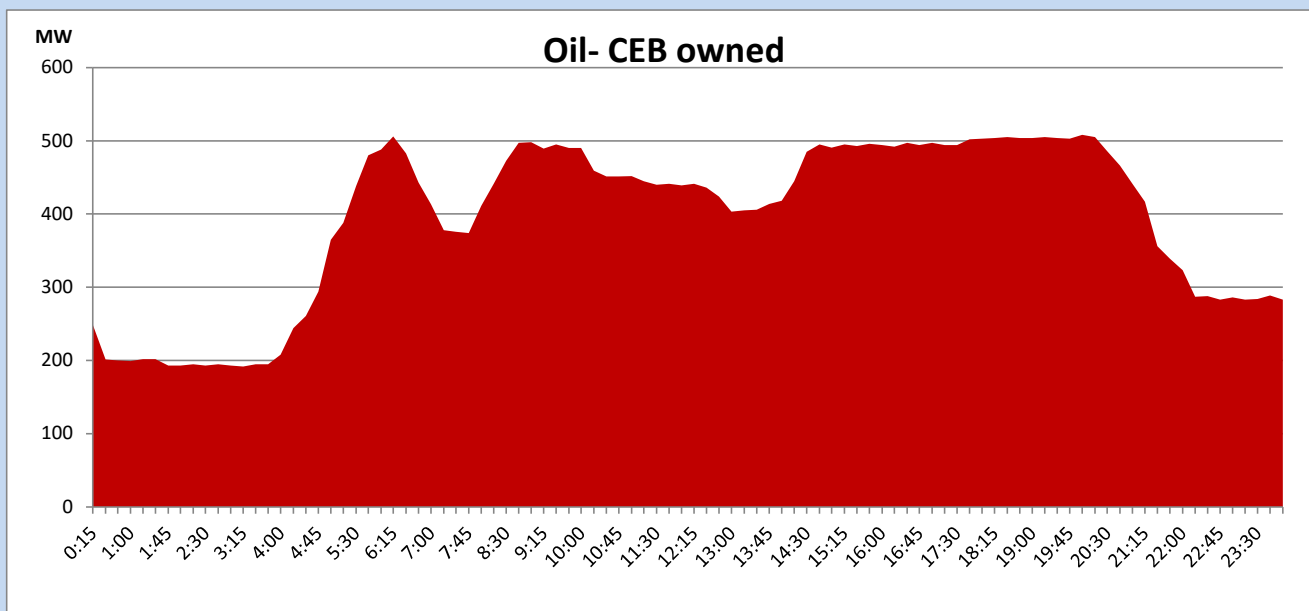
## Coal Generation during

June 23, 2023



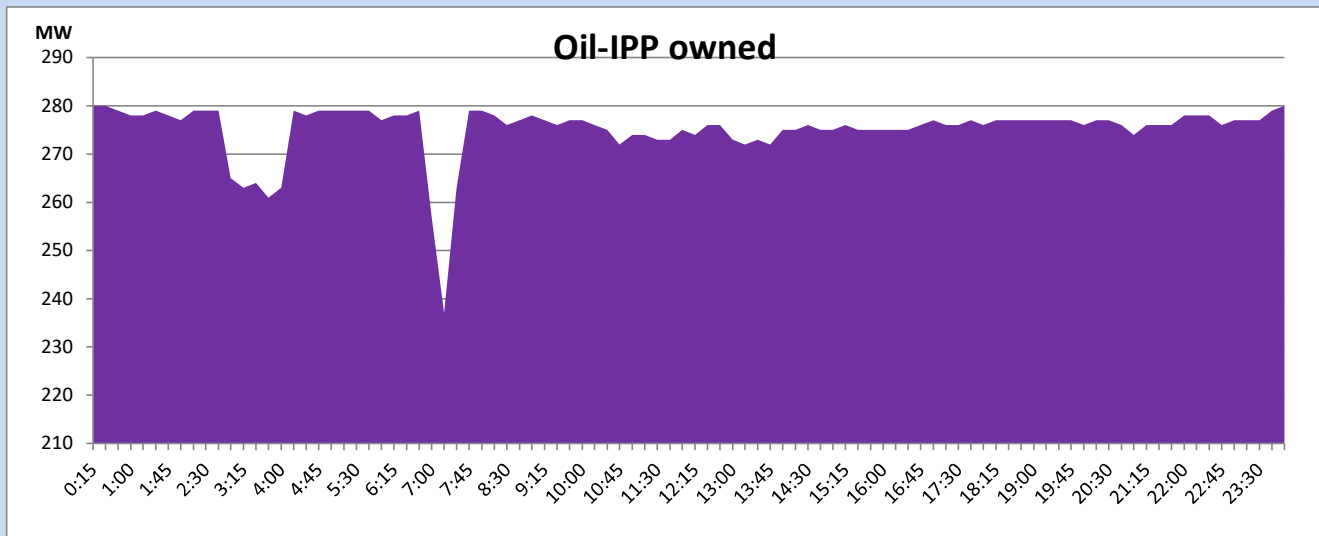
## CEB Oil Plant Generation during

June 23, 2023



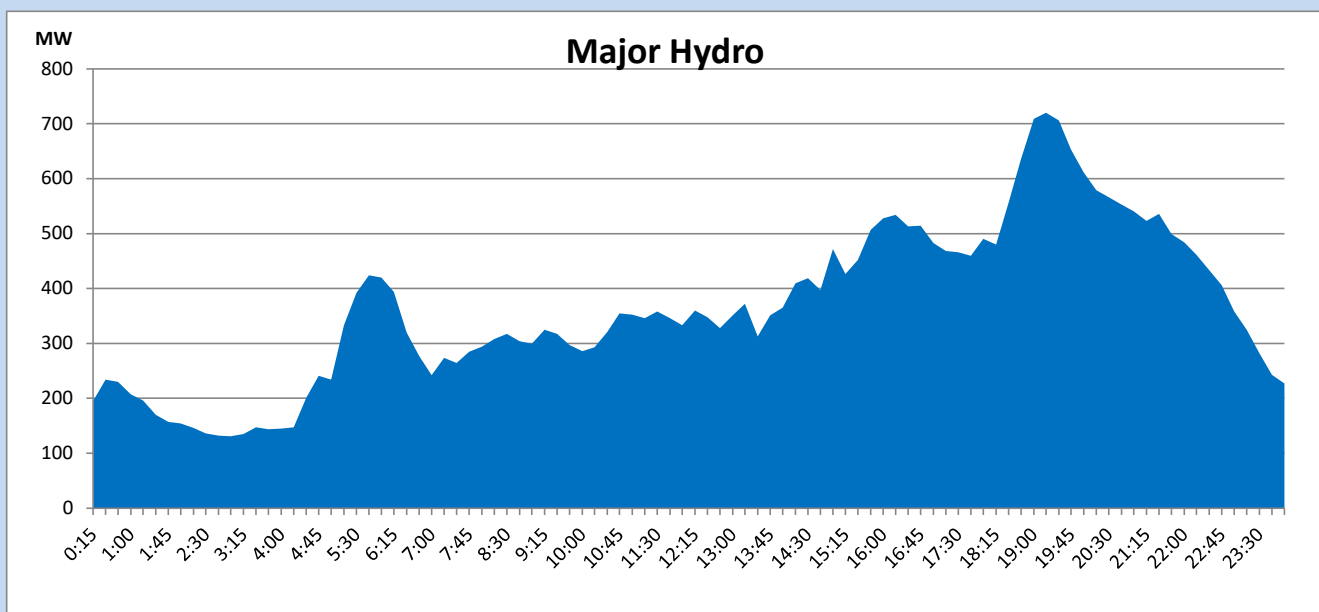
## IPP Oil Plant Generation during

June 23, 2023



## Major Hydro Generation during

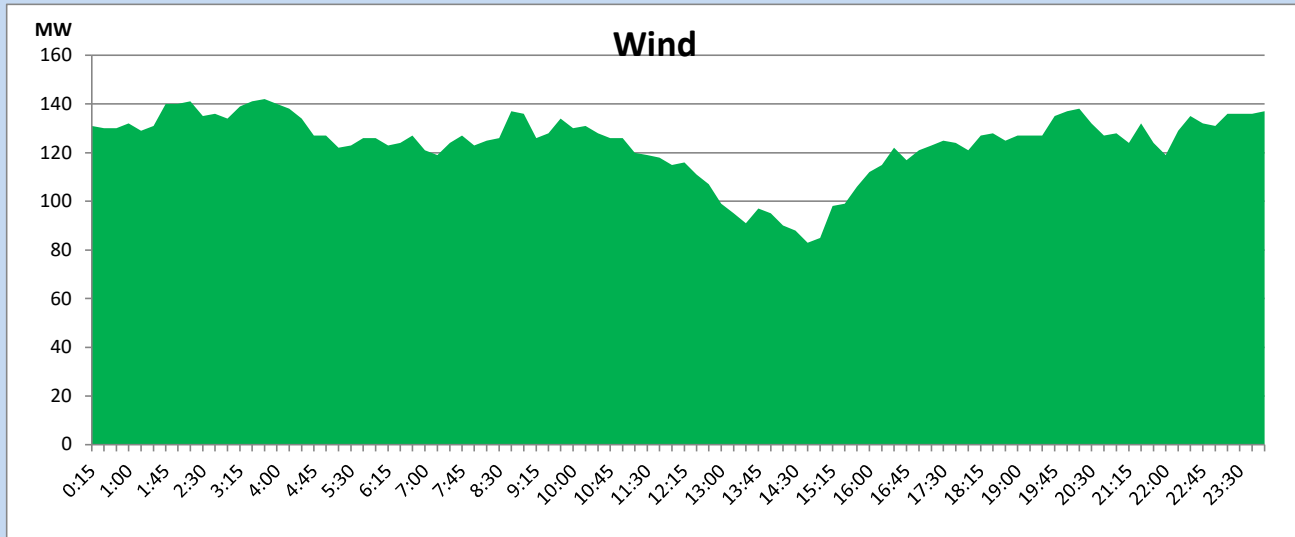
June 23, 2023



## Wind Generation during

June 23, 2023

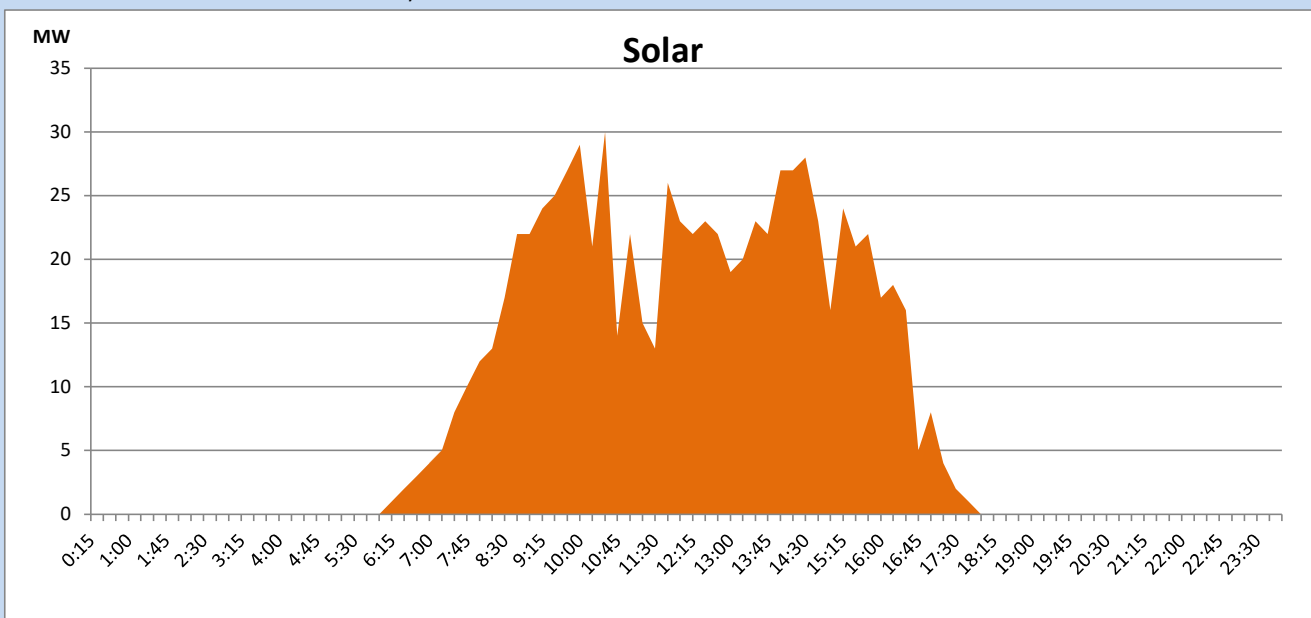
Based on Telemetered Power Stations only



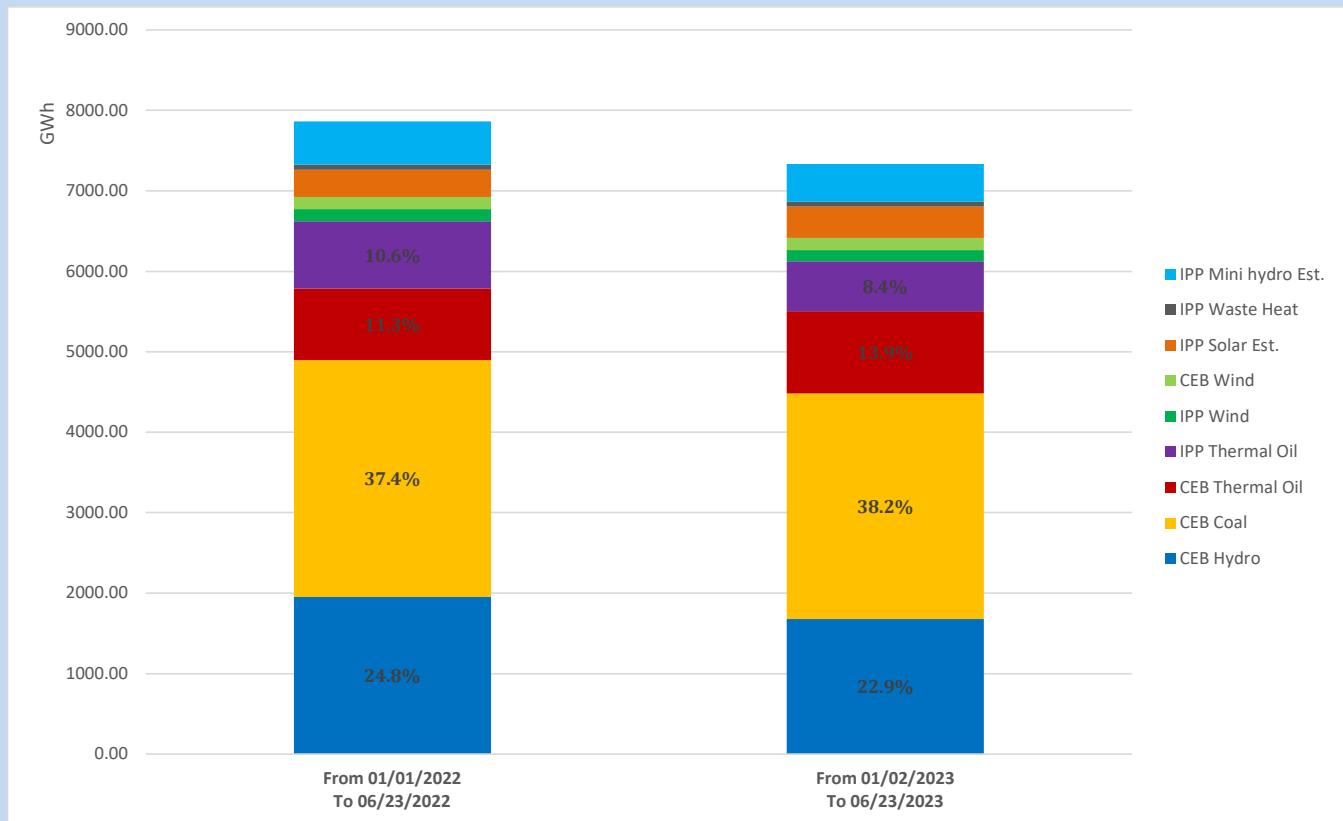
## Solar Generation during

June 23, 2023

Based on Telemetered Power Stations only



## Cumulative Dispatch Comparison with Last Year



The above figures are including contribution from roof top solar, non telemetered solar and mini hydro plants

### Thermal Plant Fuel types

Power Station	Primary Fuel
CEB Thermal	
Sapugaskanda 1	Heavy Fuel
Sapugaskanda 2	Heavy Fuel
Kelanitissa Small Gas Turbines	Auto Diesel
GT 7 - Kelanitissa	Auto Diesel
Kelanitissa CCY	Naphtha or Diesel
Lakvijaya 1	Coal
Lakvijaya 2	Coal
Lakvijaya 3	Coal
Uthuru Janani	Heavy Fuel
Barge CEB	Heavy Fuel
KCCPS -2	Auto Diesel

Power Station	Primary Fuel
Private Thermal	
West Coast	Auto Diesel / Heavy Fuel

### Major Incidents reported during the day

June 23, 2023

- 1). New Habarana 220/132/33kV T/F 02 tripped from all three ends at 04:25hrs with the indication of "Oil temperature high" . T/F 02 is yet to be normalized.