

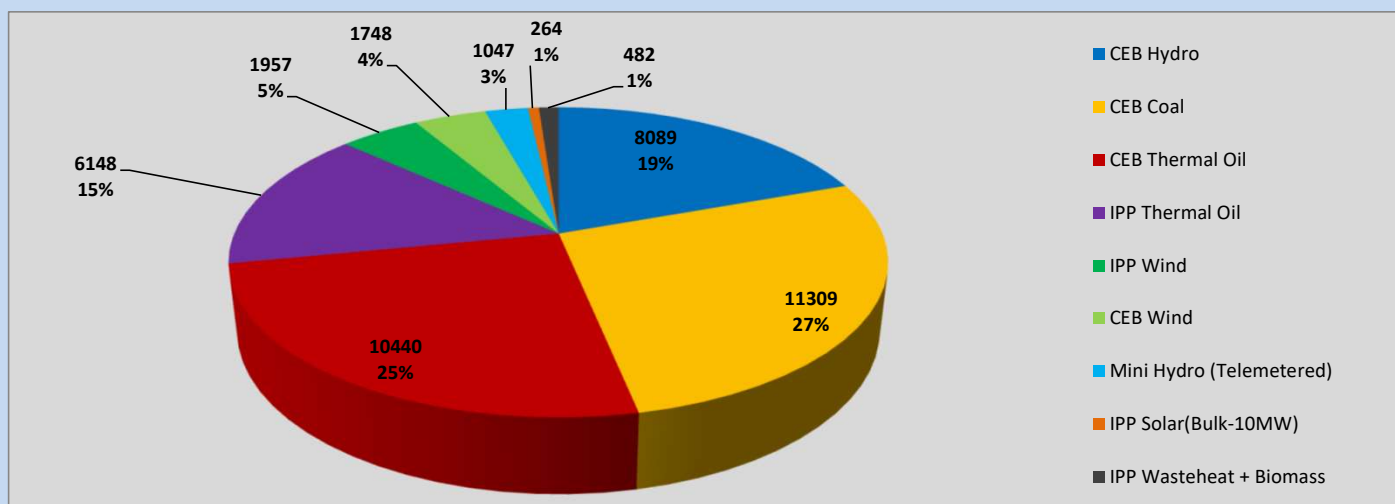
Generation and Reservoirs Statistics

June 22, 2023



PUBLIC UTILITIES COMMISSION OF SRI LANKA

Daily Generation Mix in MWh



Total Generation (Excluding estimated figures) =

41,484 MWh

Estimated figures of CEB generation report

Estimated unserved energy = 0.00 GWh
 Estimated Mini Hydro (Non telemetered) = 3033 MWh
 Estimated IPP Solar PV (Bulk 1-10MW) = 304 MWh
 Estimated Solar Roof Top PV = 1890 MWh

Cumulative Dispatch

Following data excludes the contribution from roof top solar, non telemetered solar and mini hydro plants

For Current Month

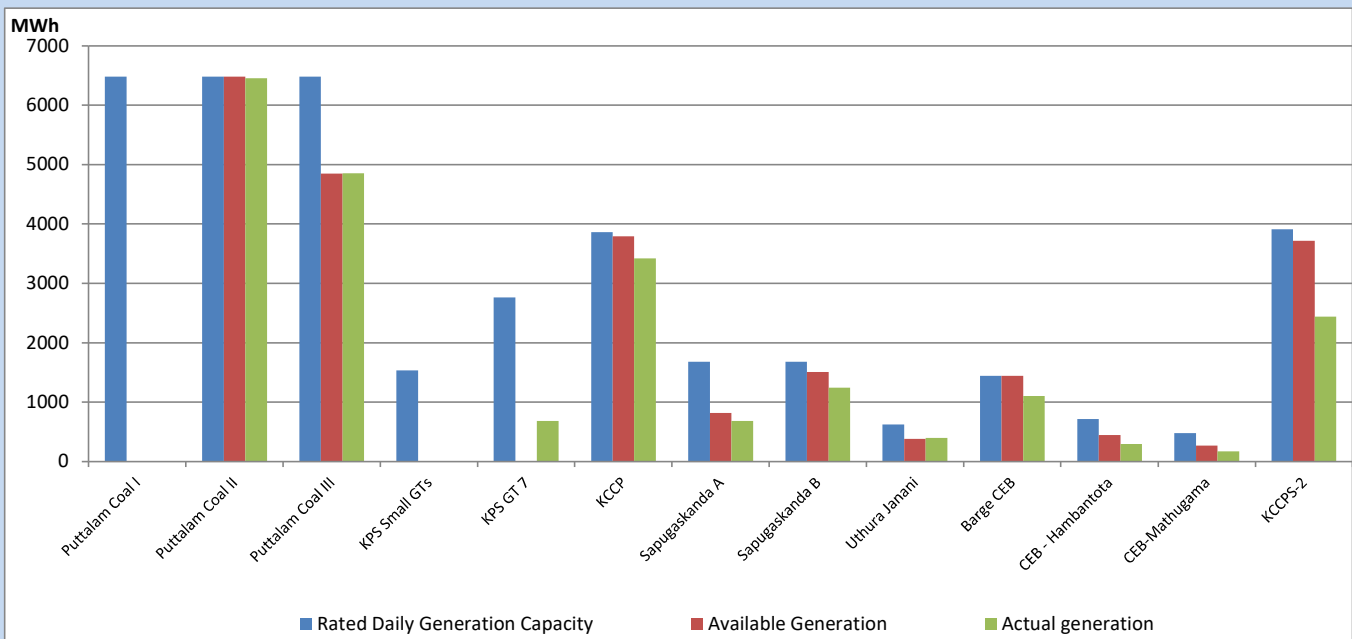
Category	Dispatch (GWh)	Percentage
CEB Hydro	192	21.75%
CEB Coal	298	33.87%
CEB Thermal Oil	167	19.00%
IPP Thermal	95	10.83%
SPP Wind	44	4.95%
CEB Wind	38	4.33%
Mini Hydro (Telemetered)	30	3.38%
IPP Solar(Bulk-10MW)	7	0.82%
IPP Wasteheat + BMP	9	1.07%
Total	881	

For Current Year

Category	Dispatch (GWh)	Percentage
CEB Hydro	1,672	25.19%
CEB Coal	2,793	42.07%
CEB Thermal Oil	1,015	15.28%
IPP Thermal	612	9.22%
SPP Wind	134	2.02%
CEB Wind	149	2.25%
Mini Hydro (Telemetered)	156	2.35%
IPP Solar(Bulk-10MW)	50	0.76%
IPP Wasteheat	57	0.85%
Total	6,639	

CEB owned Thermal Plant Dispatch

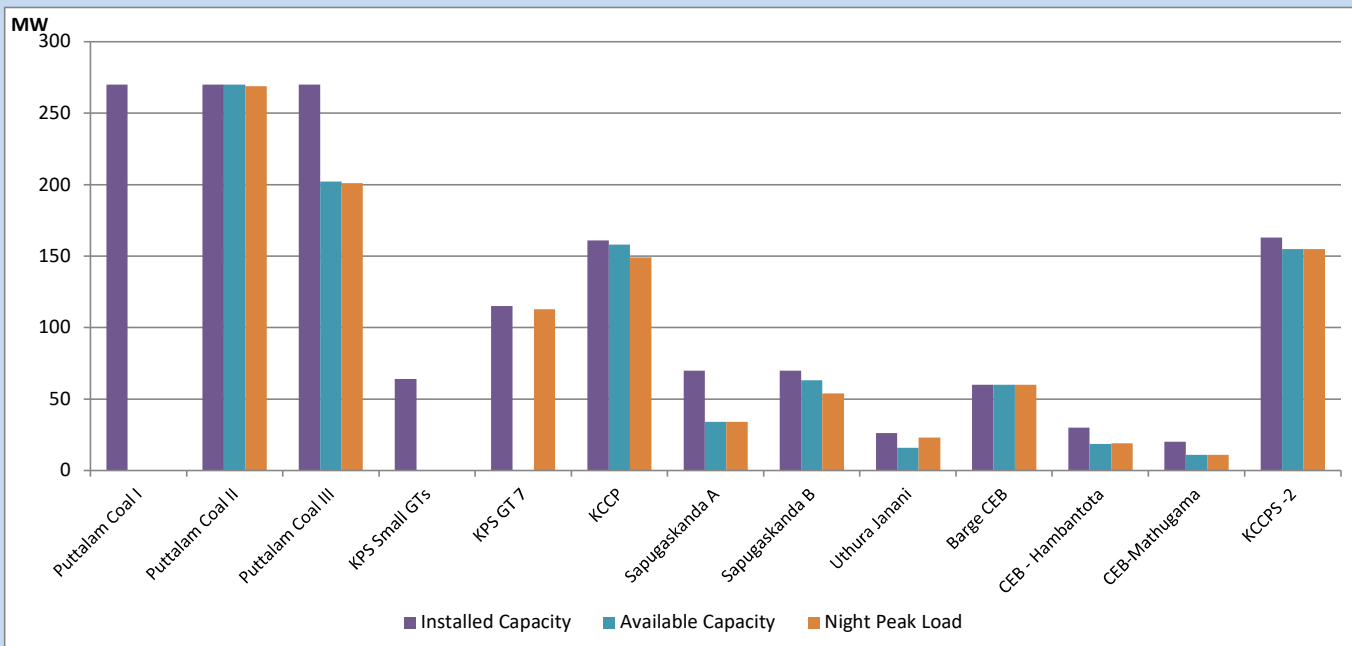
June 22, 2023



Available Generation is estimated based on plant availability at 6.00am on

June 23, 2023

CEB owned Thermal Plant Loading at the Night Peak



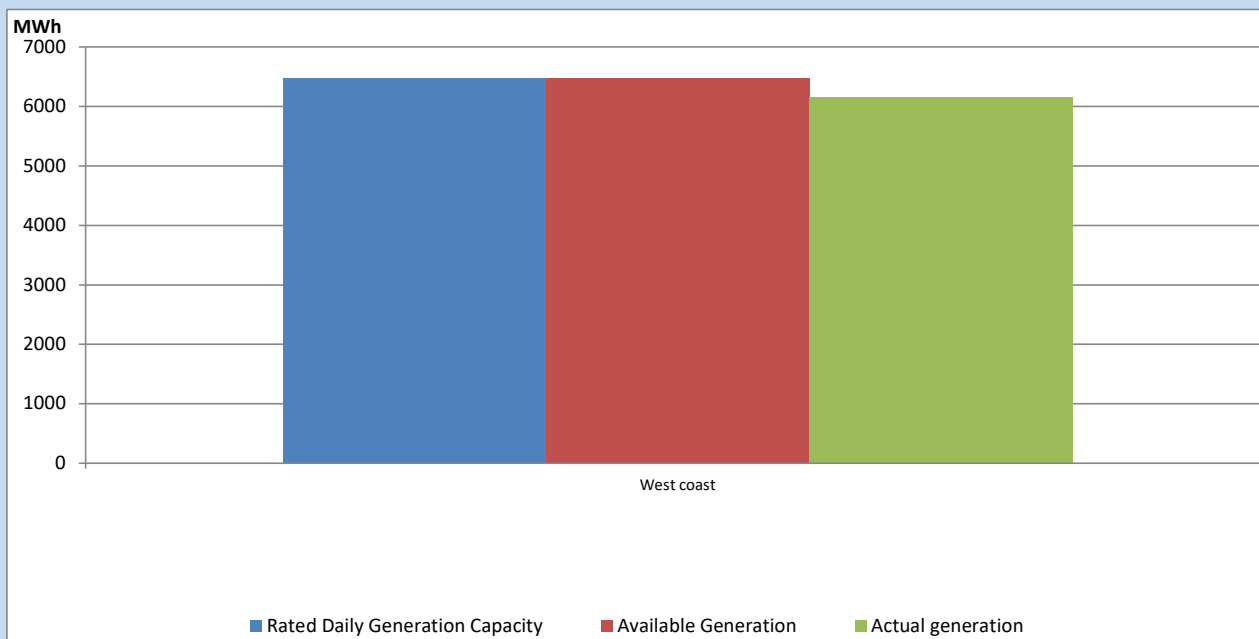
Note-

Plant availability is recorded at 6.00 am on

June 23, 2023

IPP owned Thermal Plant Dispatch

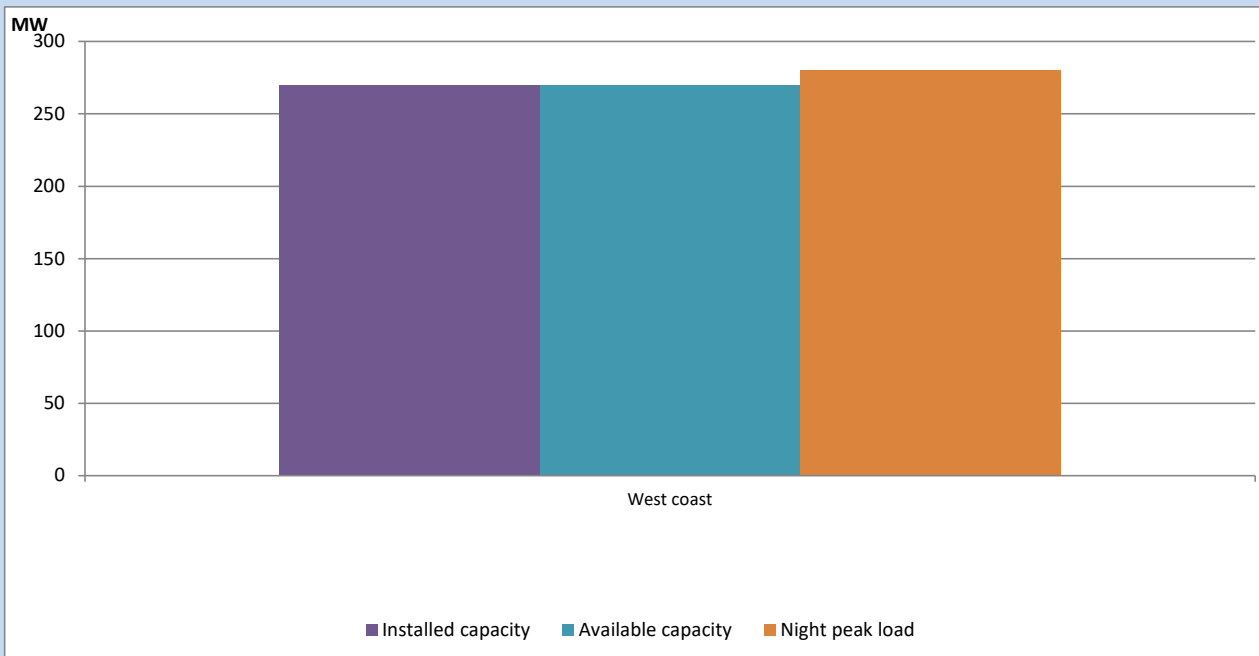
June 22, 2023



Available Generation is estimated based on plant availability at 6.00am on

June 23, 2023

IPP owned Thermal Plant Loading at the Night Peak

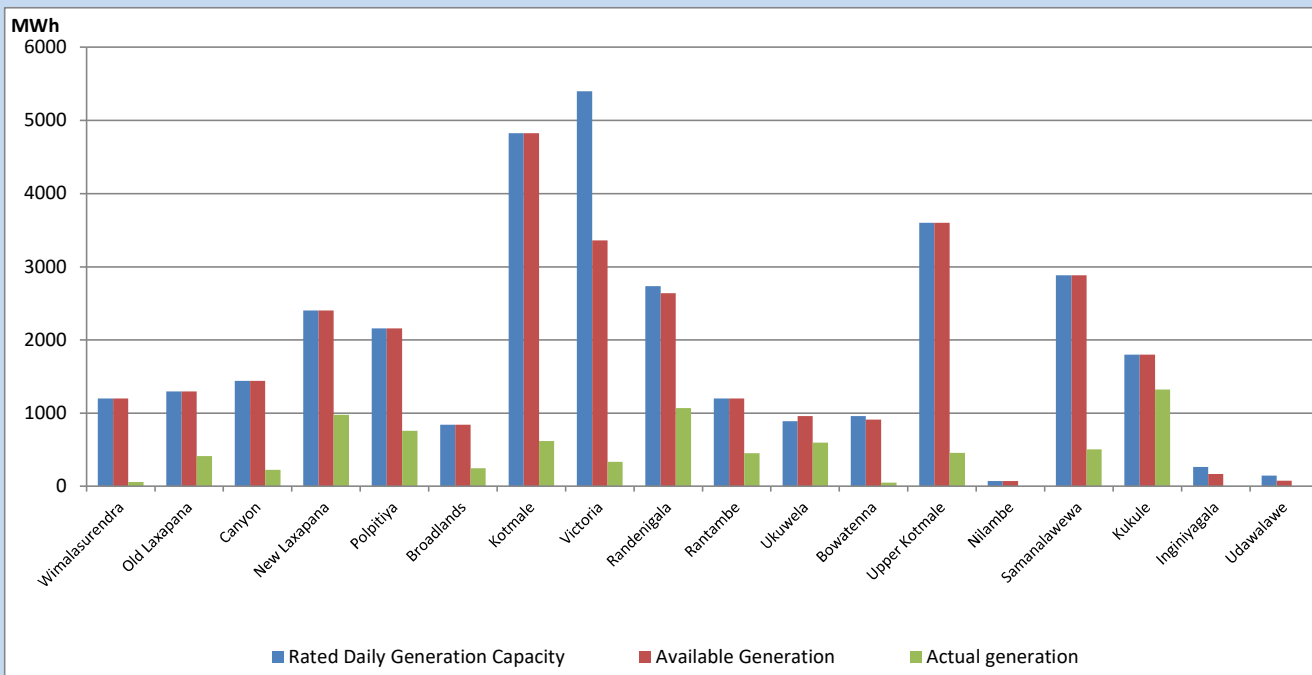


Note- Plant availability is recorded at 6.00 am on

June 23, 2023

Major Hydro Plant Dispatch

June 22, 2023

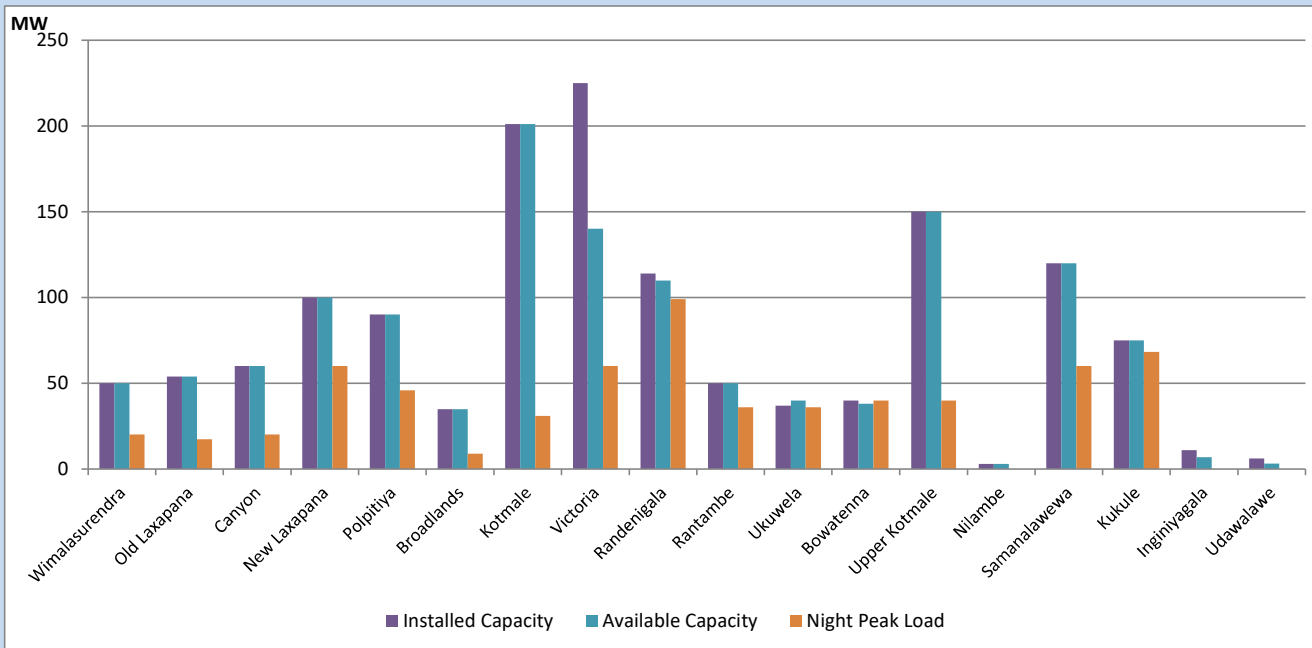


Available Generation is estimated based on plant availability at 6.00am on
Broadlands power plant is operating in the Commissioning Stage

June 23, 2023

Major Hydro Plant Loading at Night Peak

June 22, 2023



Note- Plant availability is recorded at 6.00 am on
Broadlands power plant is operating in the Commissioning Stage

June 23, 2023

Summary of Major Plant performance

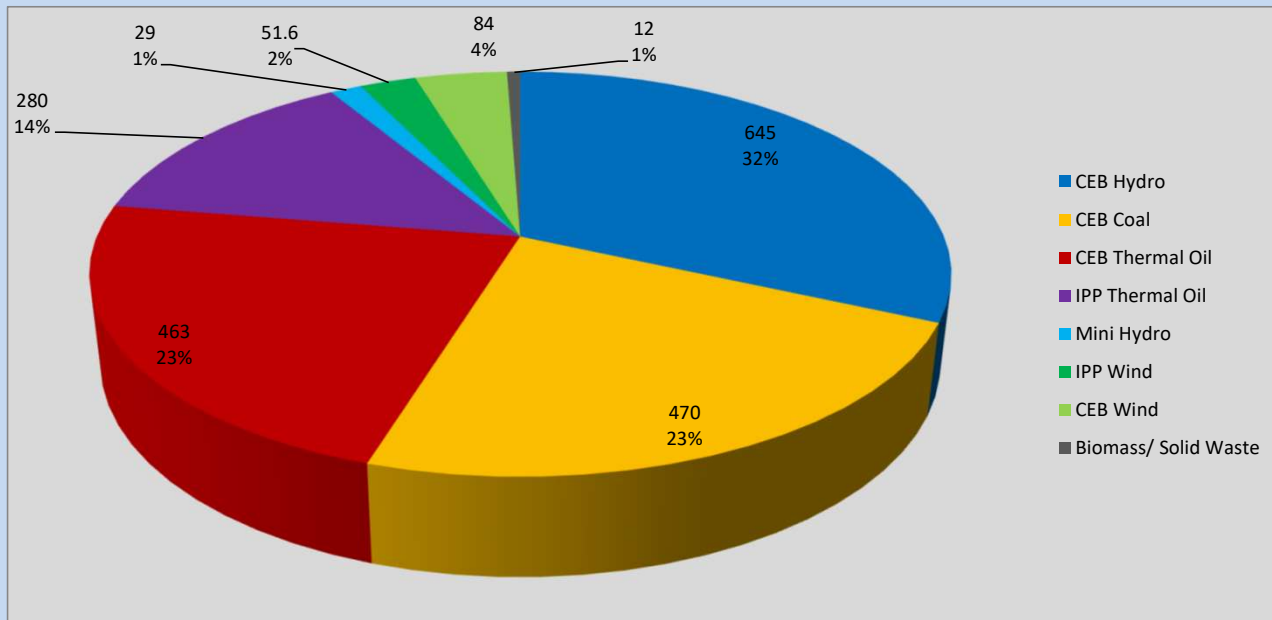
Plant	Installed Capacity	Plant Availability	Night peak Load	Plant Dispatch
	(MW)	(MW)	(MW)	(MWh)
Wimalasurendra	50	50	20	60
Old Laxapana	54	54	17	416
Canyon	60	60	20	224
New Laxapana	100	100	60	978
Polpitiya	90	90	46	761
Broadlands	35	35	9	246
Kotmale	201	201	31	620
Victoria	225	140	60	332
Randenigala	114	110	99	1,069
Rantambe	50	50	36	454
Ukuwela	37	40	36	594
Bowatenna	40	38	40	47
Upper Kotmale	150	150	40	456
Nilambe	3	3	0	3
Samanalawewa	120	120	60	504
Kukule	75	75	68	1,325
Inginiyagala	11	7	0	0
Udawalawe	6	3	0	0
Puttalam Coal I	270	0	0	0
Puttalam Coal II	270	270	269	6,456
Puttalam Coal III	270	202	201	4,853
KPS Small GTs	64	0	0	0
KPS GT 7	115	0	113	683
KCCP	161	158	149	3,423
Sapugaskanda A	70	34	34	685
Sapugaskanda B	70	63	54	1,242
Uthura Janani	26	16	23	399
Barge CEB	60	60	60	1,101
CEB-Hambantota	30	19	19	296
CEB-Mathugama	20	11	11	172
ACE Matara	24	0	0	0
Asia Power	50	0	0	0
KCCPS -2	163	155	155	2,439
West Coast	270	270	280	6,148
Nothern Power	36	0	0	0
ACE Embilipitiya	93	0	0	0
Total	3,483	2,584	2,187	41,484

Plant availability is the availability recorded at 6 am on

June 23, 2023

Contribution to the Night Peak in MW

June 22, 2023

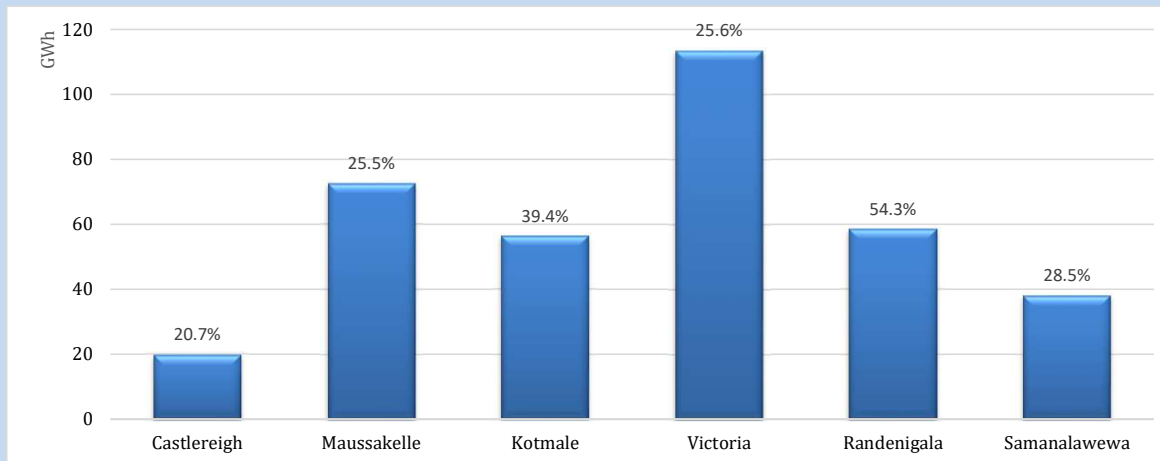


Night Peak*	2,189 MW
Day Peak Maximum Demand	1,979 MW
Day Peak Minimum Demand	1,702 MW
Off Peak Minimum Demand	1,223 MW

Above figures are excluding contribution from roof top solar, non telemetered solar and mini hydro plants

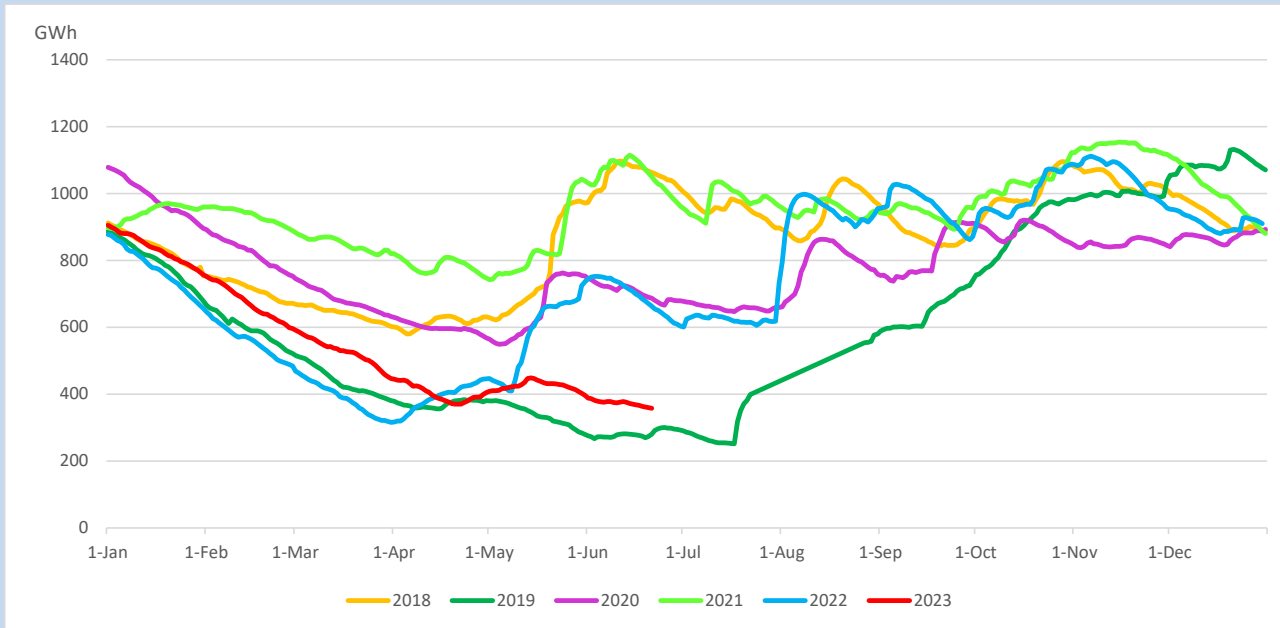
Reservoir Levels -

as at 06.00 Hr on June 23, 2023

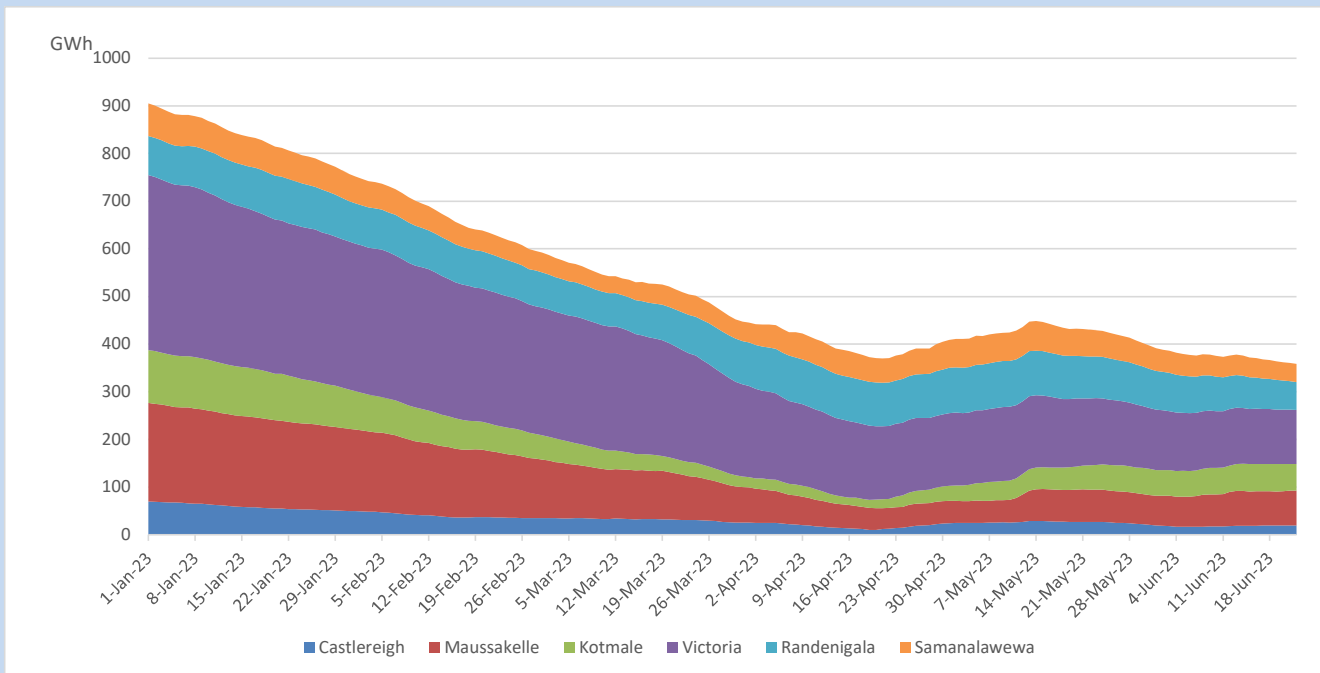


Total Reservoir Level	358.4 GWh
% of Total capacity	29.7%

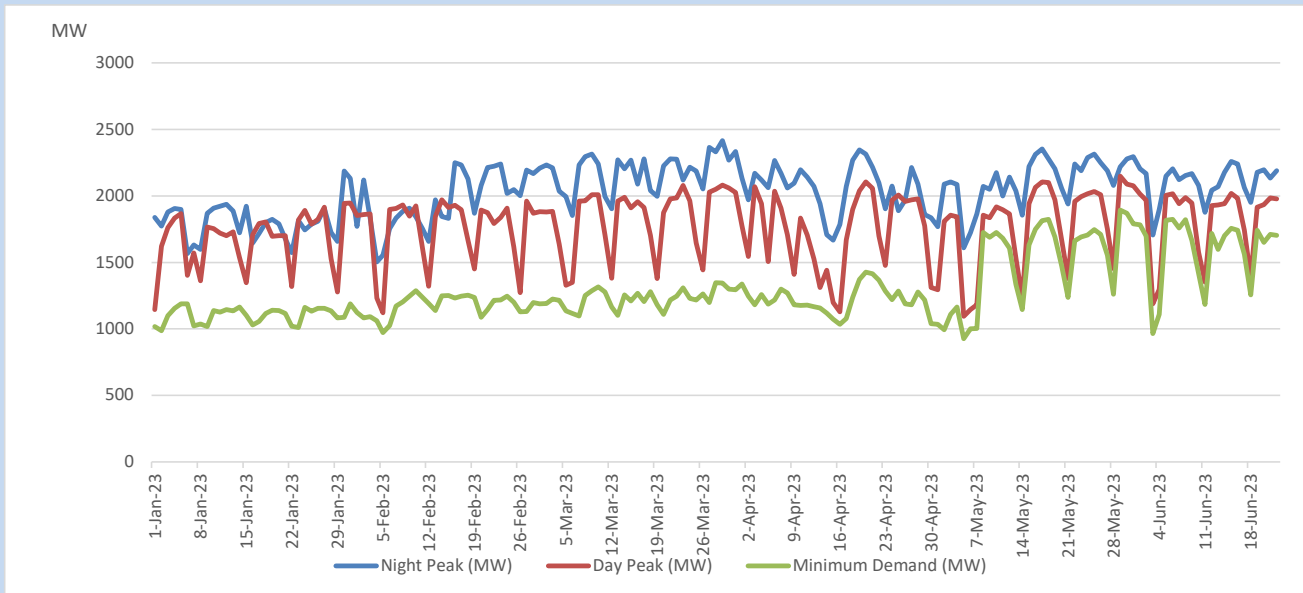
Comparison of Total Reservoir Storage Levels with Past Years



Variation of Major Hydro Reservoir Levels in the current year (GWh)



Variation of Demand during the current year

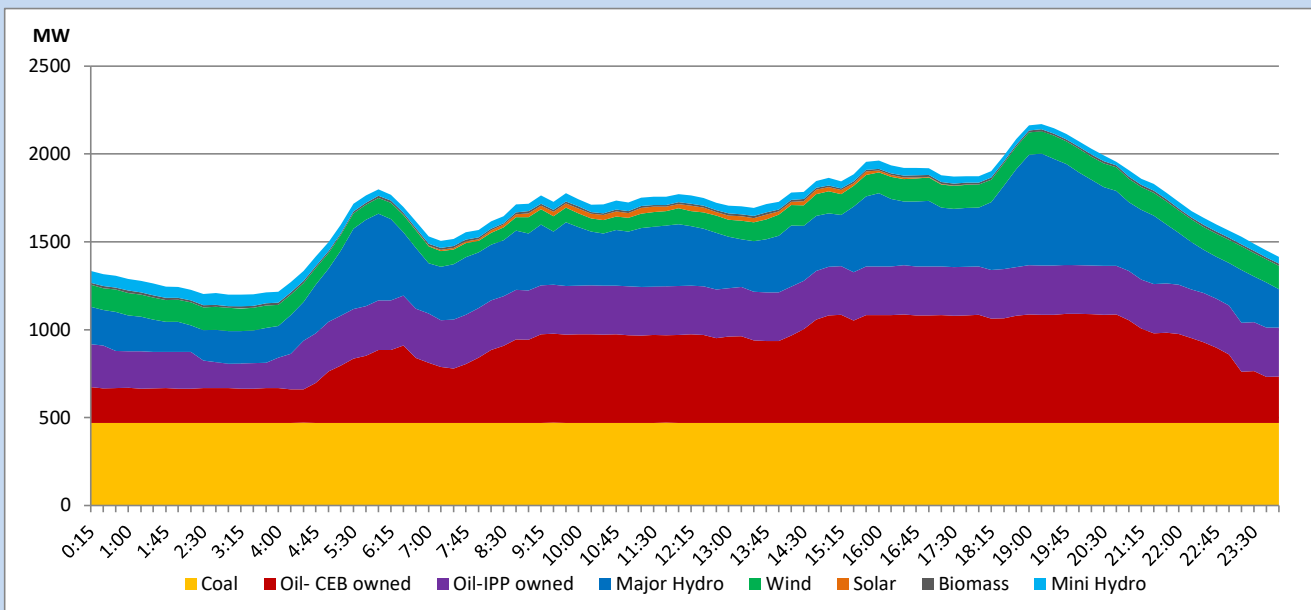


The above figures are excluding contribution from roof top solar, non telemetered solar and mini hydro plants

Daily Load Curve

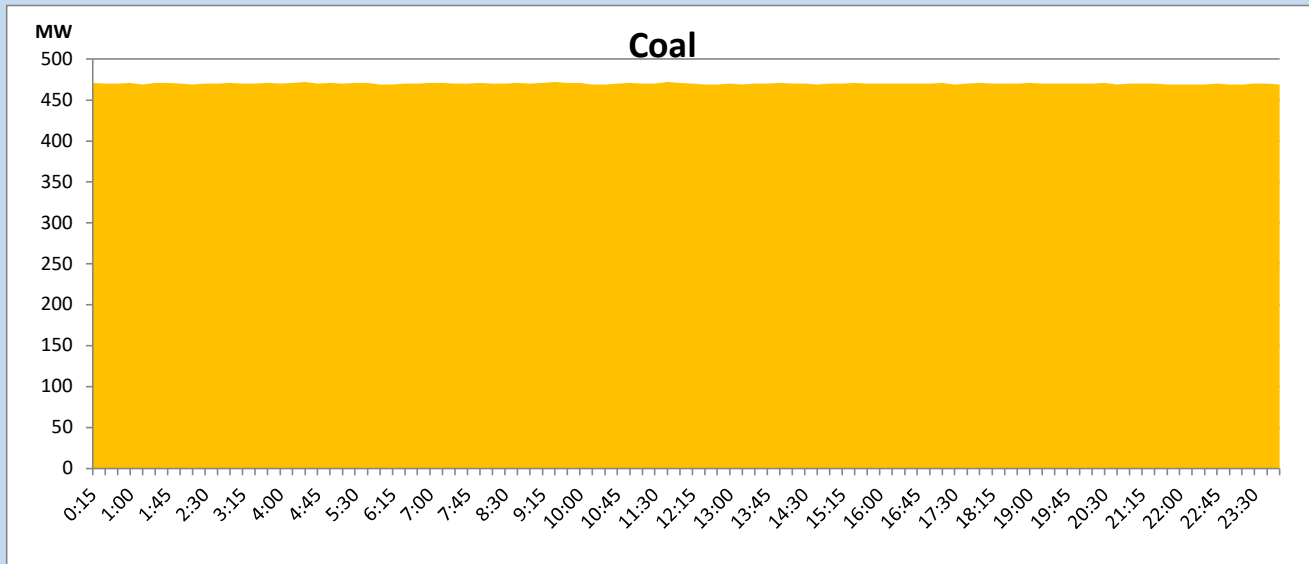
June 22, 2023

Solar and wind data is based on Telemetered Power Stations only



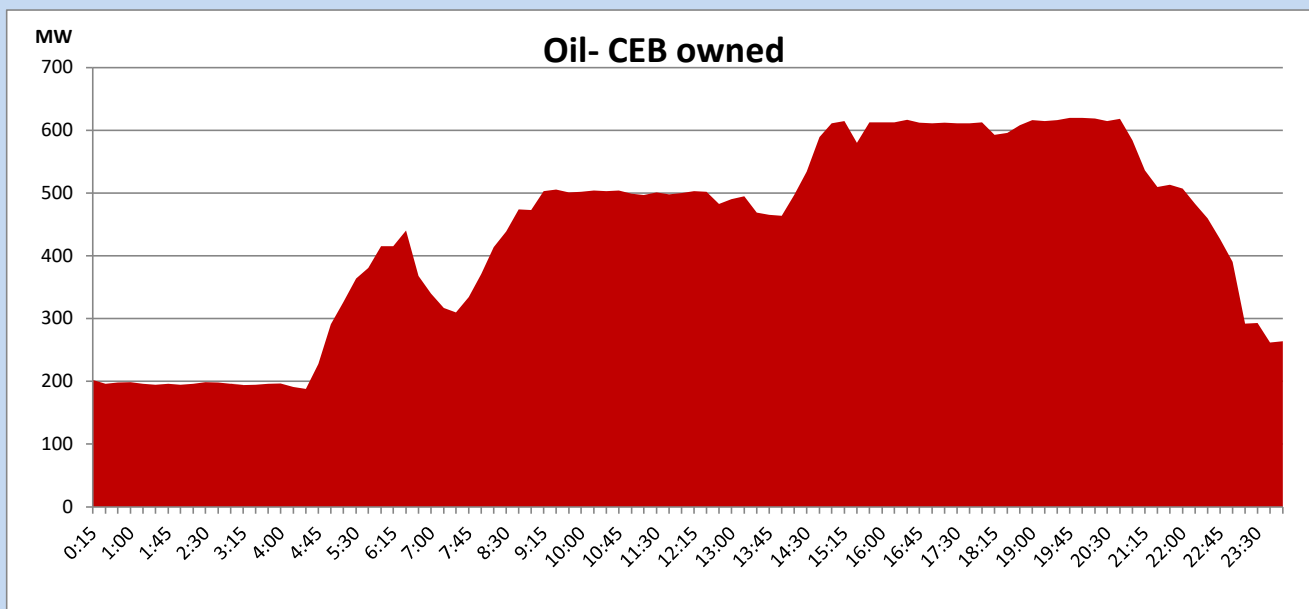
Coal Generation during

June 22, 2023



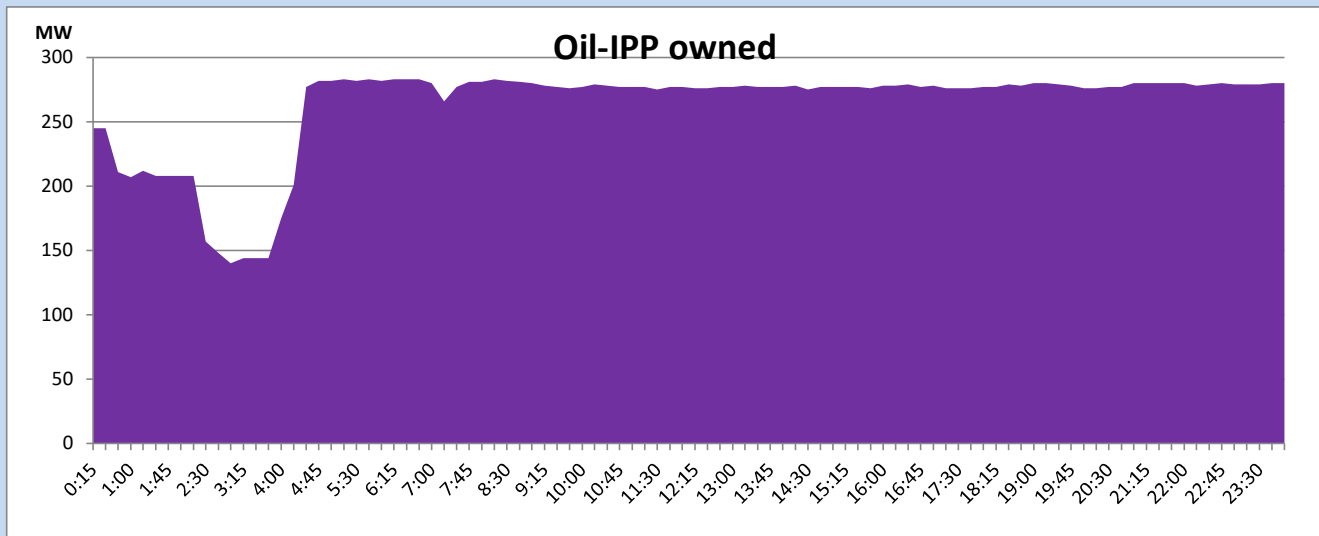
CEB Oil Plant Generation during

June 22, 2023



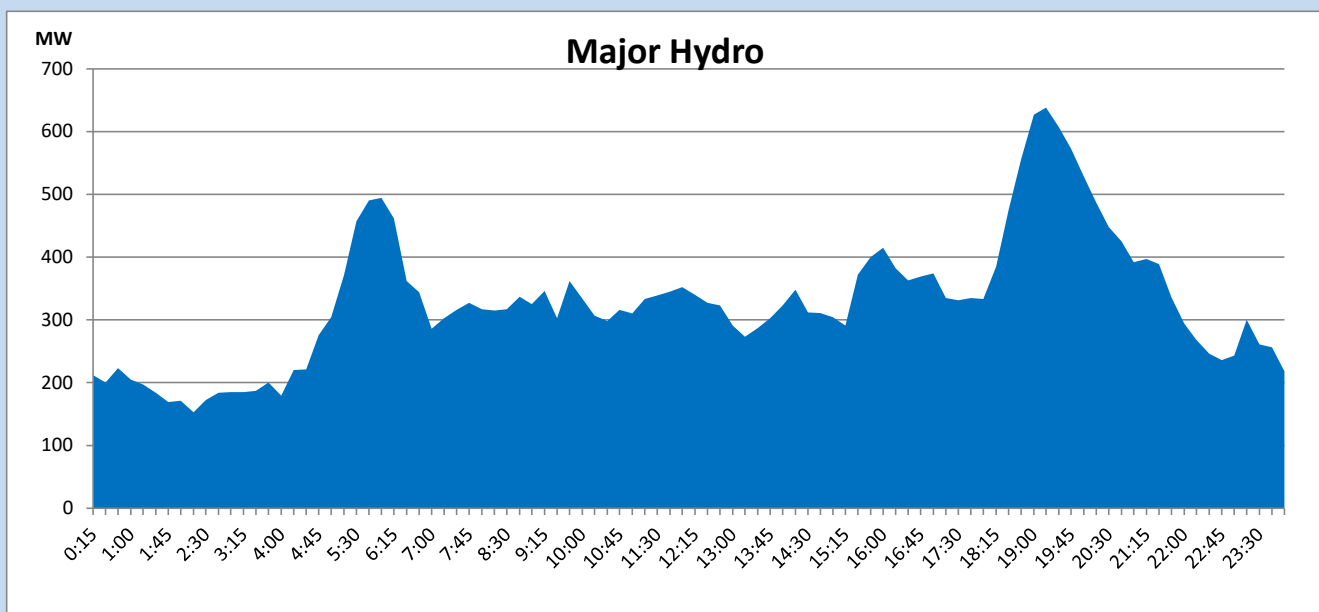
IPP Oil Plant Generation during

June 22, 2023



Major Hydro Generation during

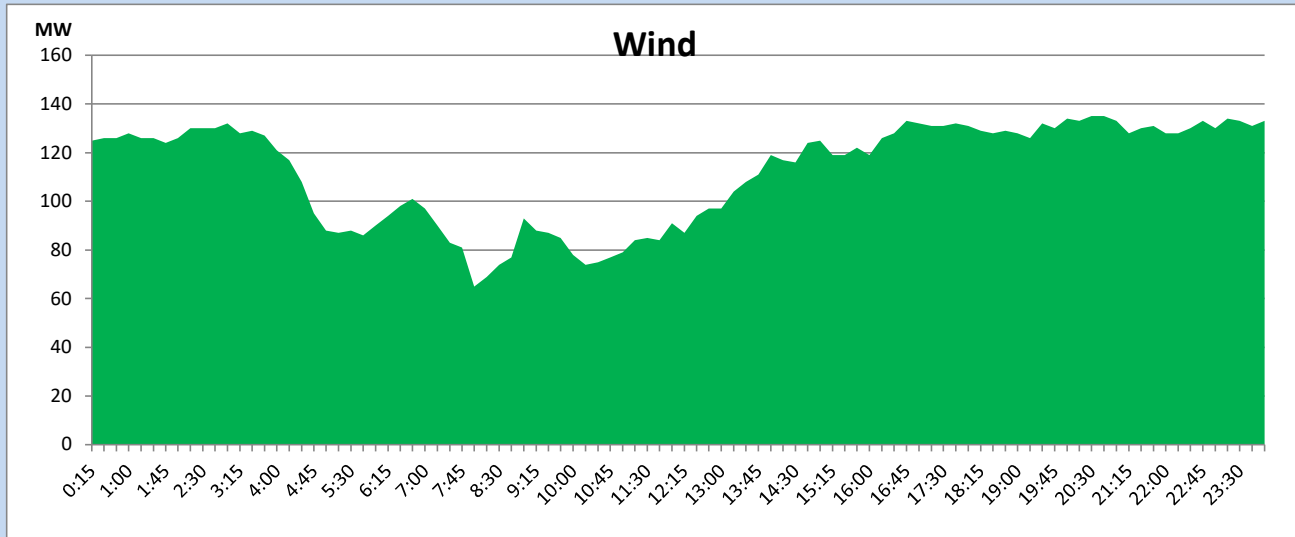
June 22, 2023



Wind Generation during

June 22, 2023

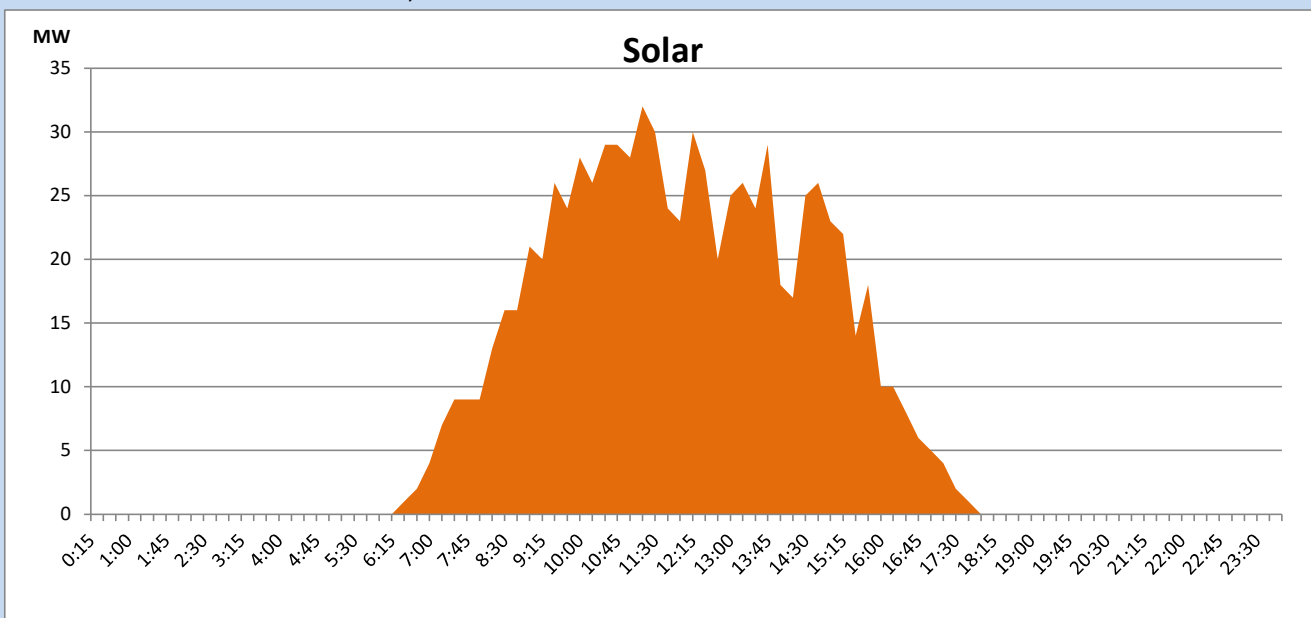
Based on Telemetered Power Stations only



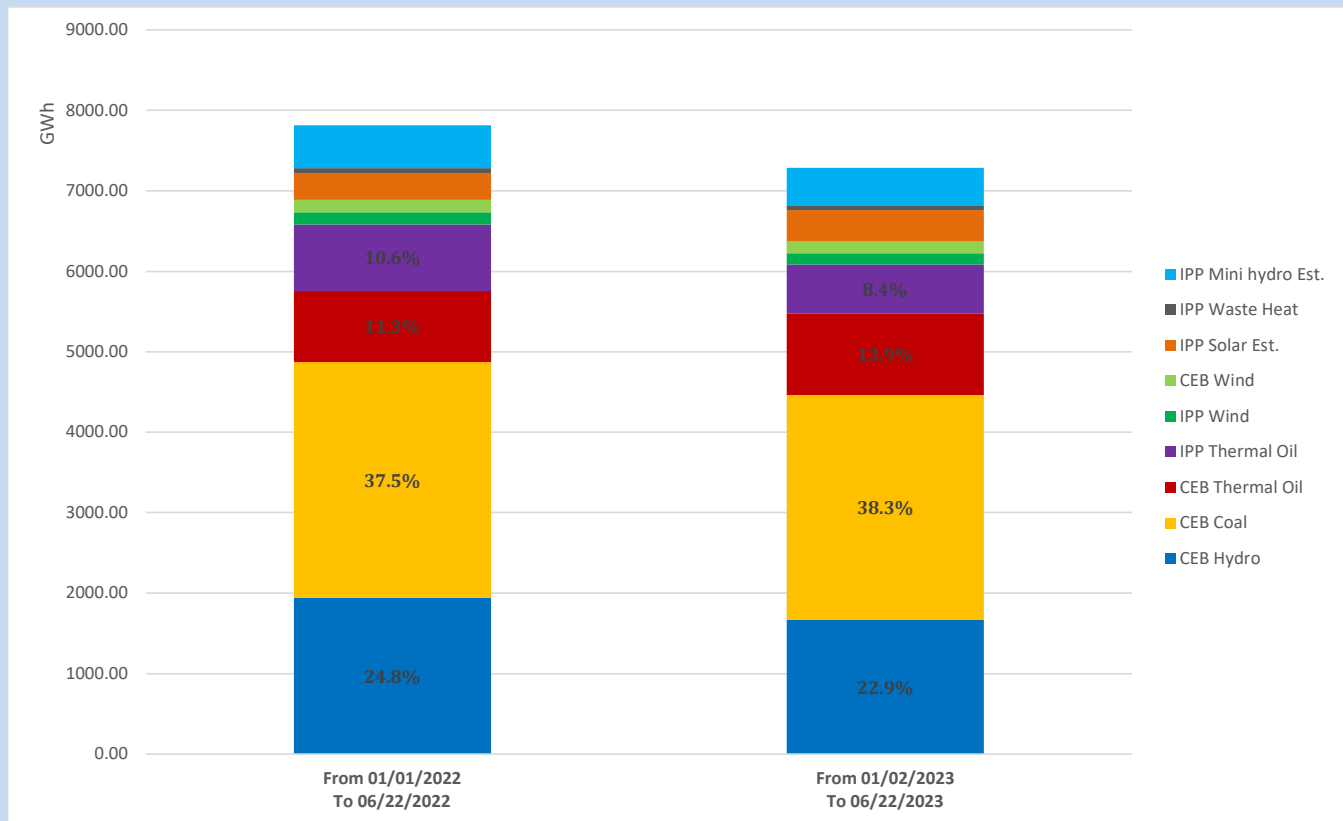
Solar Generation during

June 22, 2023

Based on Telemetered Power Stations only



Cumulative Dispatch Comparison with Last Year



The above figures are including contribution from roof top solar, non telemetered solar and mini hydro plants

Thermal Plant Fuel types

Power Station	Primary Fuel
CEB Thermal	
Sapugaskanda 1	Heavy Fuel
Sapugaskanda 2	Heavy Fuel
Kelanitissa Small Gas Turbines	Auto Diesel
GT 7 - Kelanitissa	Auto Diesel
Kelanitissa CCY	Naphtha or Diesel
Lakvijaya 1	Coal
Lakvijaya 2	Coal
Lakvijaya 3	Coal
Uthuru Janani	Heavy Fuel
Barge CEB	Heavy Fuel
KCCPS -2	Auto Diesel

Power Station	Primary Fuel
Private Thermal	
West Coast	Auto Diesel / Heavy Fuel

Major Incidents reported during the day

June 22, 2023

Nil.