

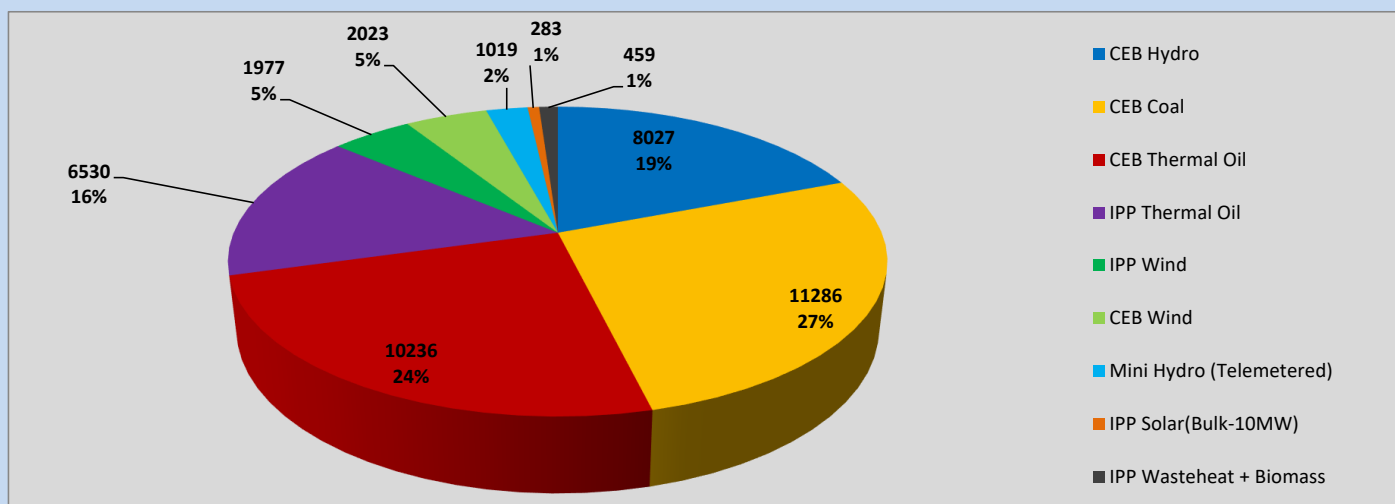
Generation and Reservoirs Statistics

June 21, 2023



PUBLIC UTILITIES COMMISSION OF SRI LANKA

Daily Generation Mix in MWh



Total Generation (Excluding estimated figures) =

41,840 MWh

Estimated figures of CEB generation report

Estimated unserved energy = 0.00 GWh

Estimated Mini Hydro (Non telemetered) = 3061 MWh

Estimated IPP Solar PV (Bulk 1-10MW) = 304 MWh

Estimated Solar Roof Top PV = 1890 MWh

Cumulative Dispatch

Following data excludes the contribution from roof top solar, non telemetered solar and mini hydro plants

For Current Month

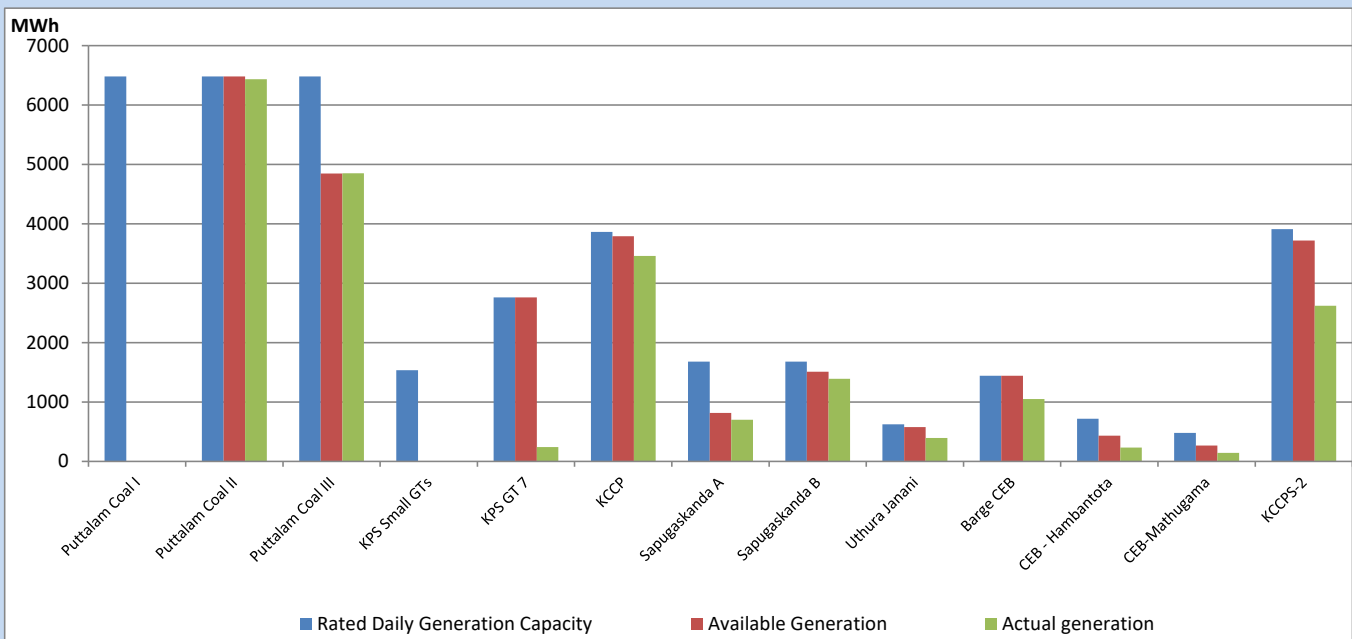
Category	Dispatch (GWh)	
CEB Hydro	184	21.86%
CEB Coal	287	34.19%
CEB Thermal Oil	157	18.69%
IPP Thermal	89	10.64%
SPP Wind	42	4.96%
CEB Wind	36	4.34%
Mini Hydro (Telemetered)	29	3.42%
IPP Solar(Bulk-10MW)	7	0.83%
IPP Wasteheat + BMP	9	1.07%
Total	840	

For Current Year

Category	Dispatch (GWh)	
CEB Hydro	1,664	25.22%
CEB Coal	2,782	42.17%
CEB Thermal Oil	1,004	15.22%
IPP Thermal	606	9.19%
SPP Wind	132	2.00%
CEB Wind	148	2.24%
Mini Hydro (Telemetered)	155	2.34%
IPP Solar(Bulk-10MW)	50	0.76%
IPP Wasteheat	56	0.85%
Total	6,597	

CEB owned Thermal Plant Dispatch

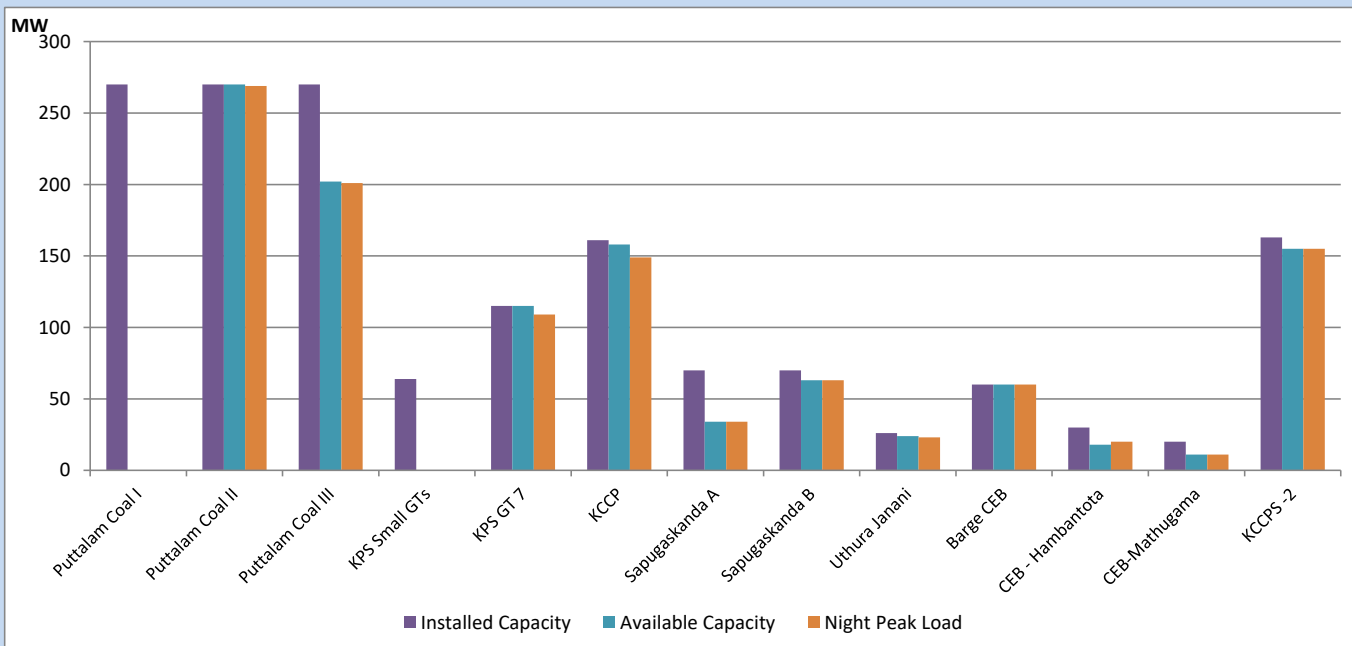
June 21, 2023



Available Generation is estimated based on plant availability at 6.00am on

June 22, 2023

CEB owned Thermal Plant Loading at the Night Peak



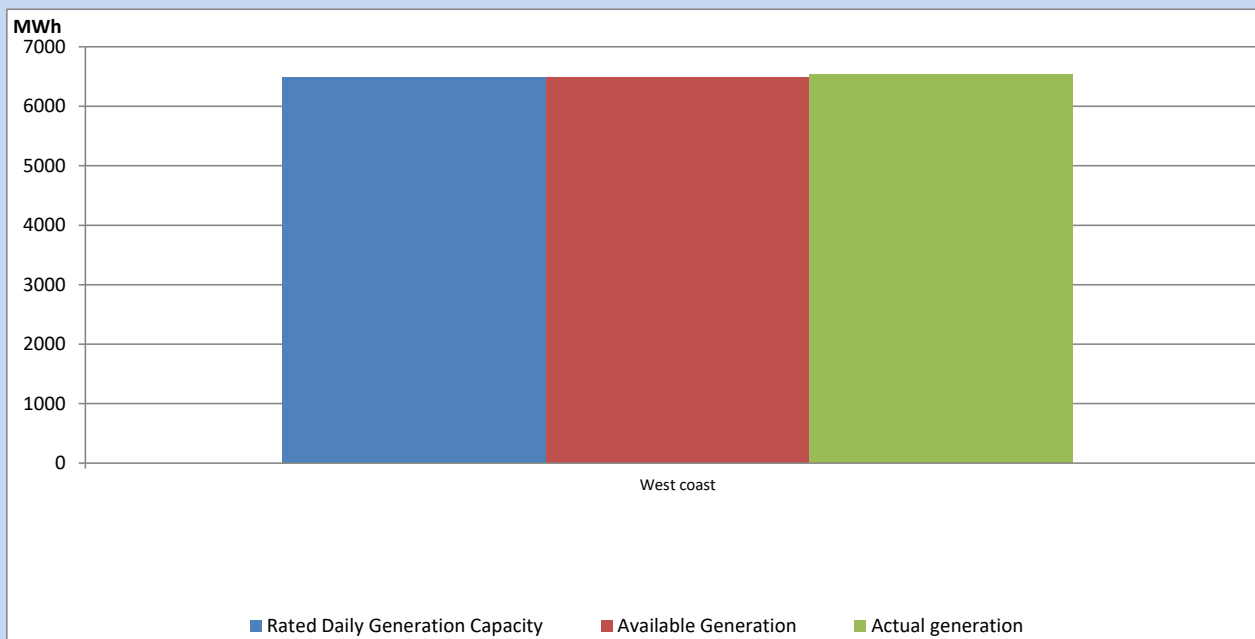
Note-

Plant availability is recorded at 6.00 am on

June 22, 2023

IPP owned Thermal Plant Dispatch

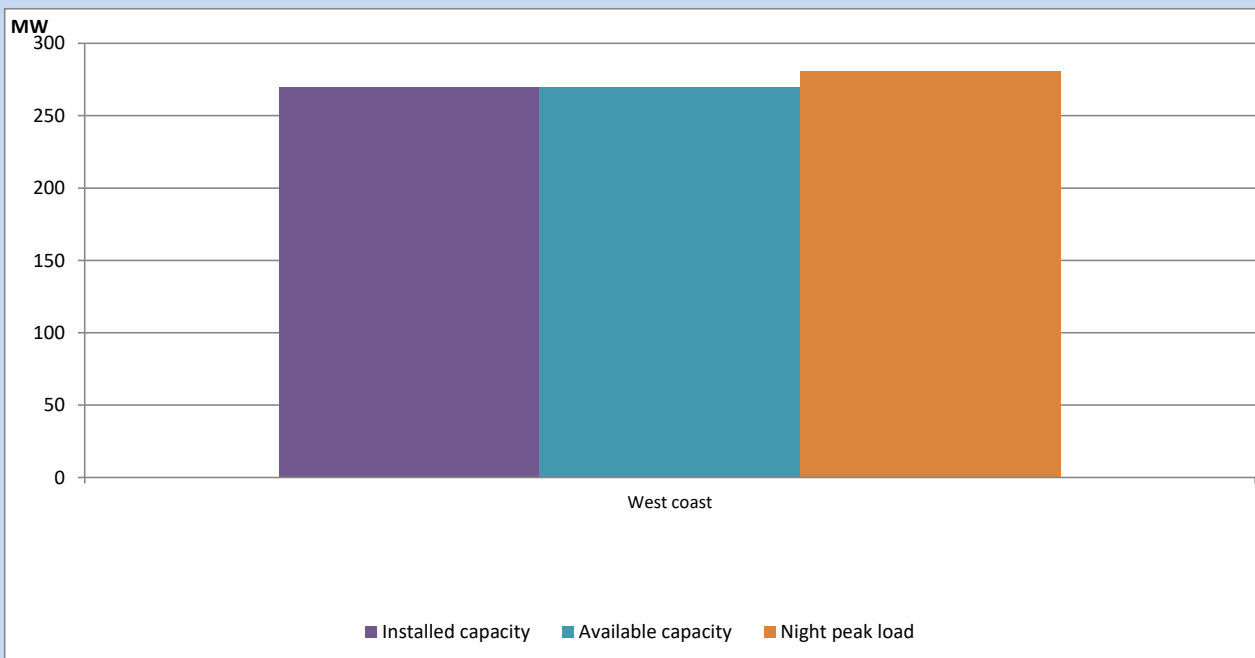
June 21, 2023



Available Generation is estimated based on plant availability at 6.00am on

June 22, 2023

IPP owned Thermal Plant Loading at the Night Peak

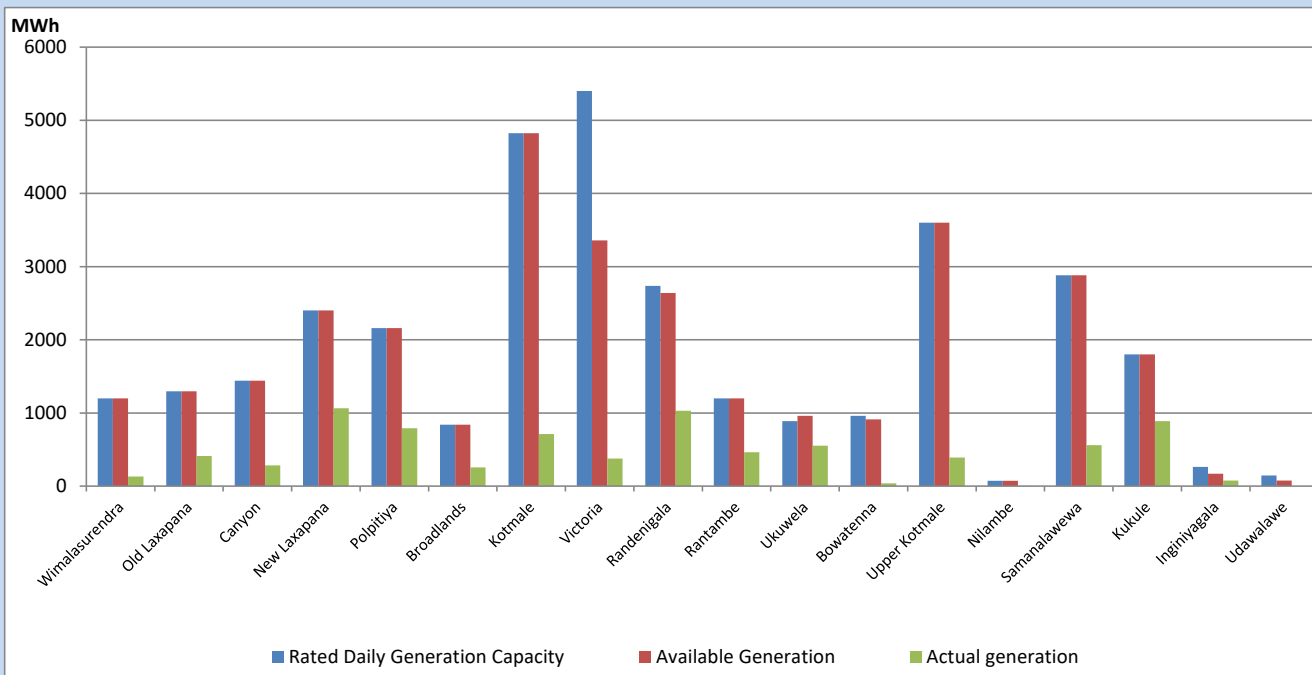


Note- Plant availability is recorded at 6.00 am on

June 22, 2023

Major Hydro Plant Dispatch

June 21, 2023

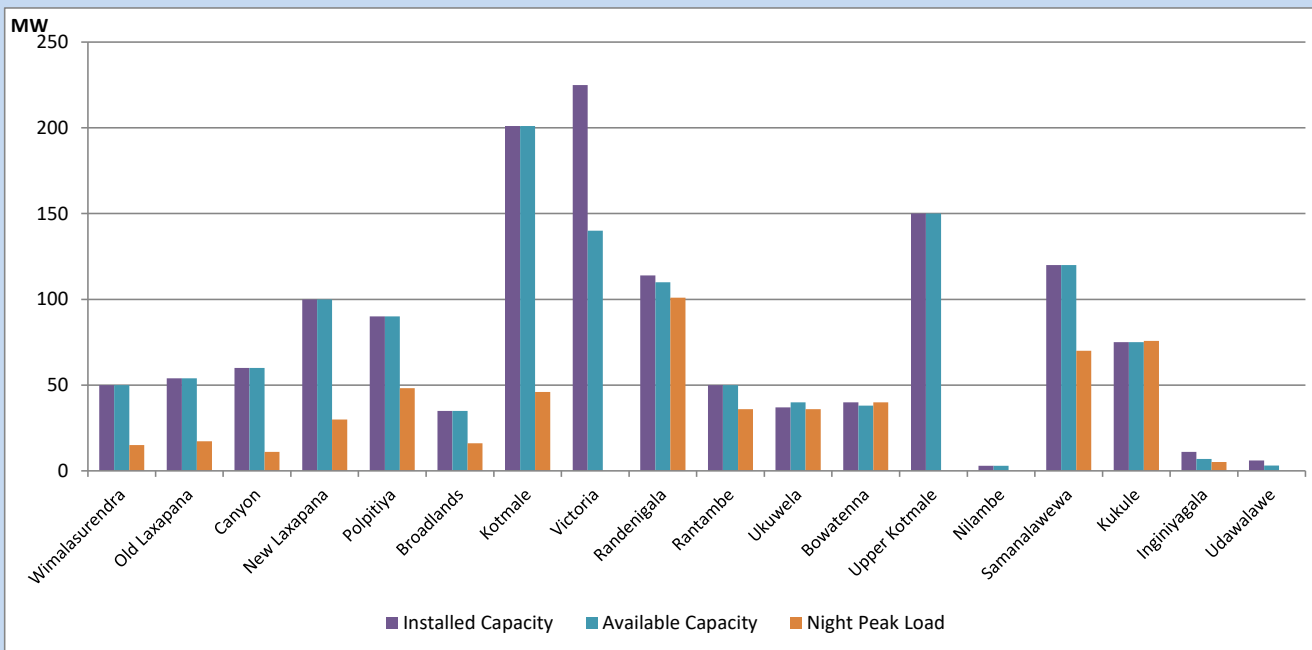


Available Generation is estimated based on plant availability at 6.00am on
Broadlands power plant is operating in the Commissioning Stage

June 22, 2023

Major Hydro Plant Loading at Night Peak

June 21, 2023



Note- Plant availability is recorded at 6.00 am on
Broadlands power plant is operating in the Commissioning Stage

June 22, 2023

Summary of Major Plant performance

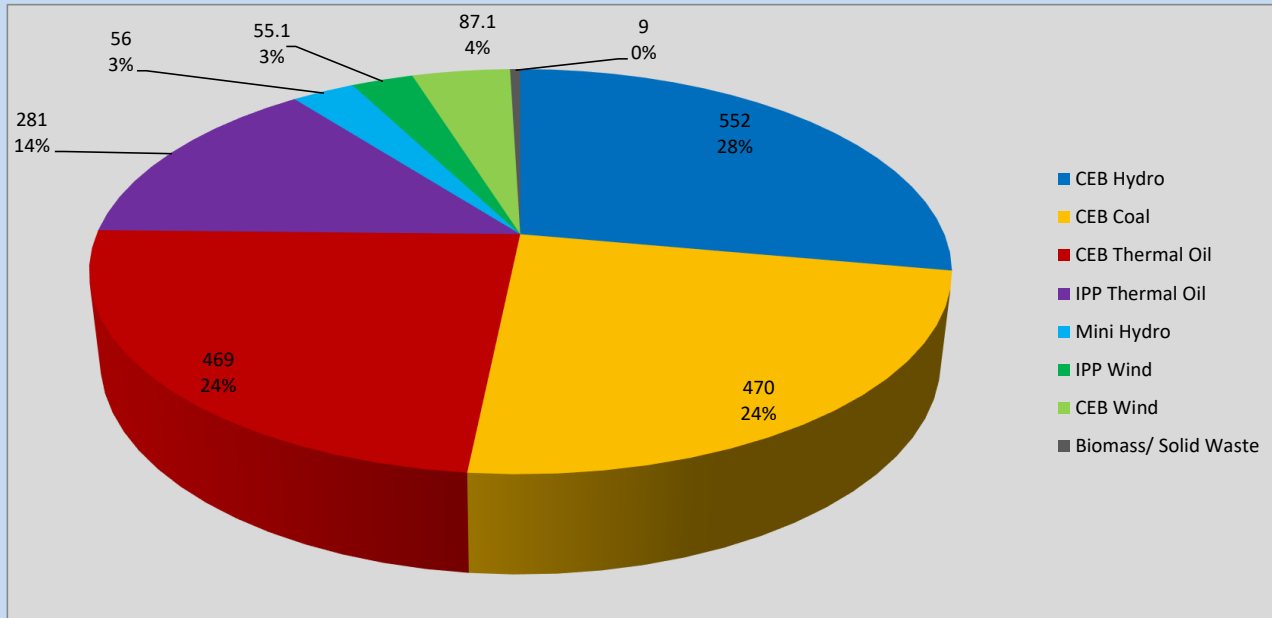
Plant	Installed Capacity	Plant Availability	Night peak Load	Plant Dispatch
	(MW)	(MW)	(MW)	(MWh)
Wimalasurendra	50	50	15	132
Old Laxapana	54	54	17	411
Canyon	60	60	11	284
New Laxapana	100	100	30	1,065
Polpitiya	90	90	48	792
Broadlands	35	35	16	254
Kotmale	201	201	46	710
Victoria	225	140	0	377
Randenigala	114	110	101	1,029
Rantambe	50	50	36	462
Ukuwela	37	40	36	553
Bowatenna	40	38	40	39
Upper Kotmale	150	150	0	390
Nilambe	3	3	0	5
Samanalawewa	120	120	70	558
Kukule	75	75	76	889
Inginiyagala	11	7	5	77
Udawalawe	6	3	0	0
Puttalam Coal I	270	0	0	0
Puttalam Coal II	270	270	269	6,433
Puttalam Coal III	270	202	201	4,853
KPS Small GTs	64	0	0	0
KPS GT 7	115	115	109	240
KCCP	161	158	149	3,461
Sapugaskanda A	70	34	34	701
Sapugaskanda B	70	63	63	1,390
Uthura Janani	26	24	23	396
Barge CEB	60	60	60	1,049
CEB-Hambantota	30	18	20	235
CEB-Mathugama	20	11	11	143
ACE Matara	24	0	0	0
Asia Power	50	0	0	0
KCCPS -2	163	155	155	2,621
West Coast	270	270	281	6,530
Nothern Power	36	0	0	0
ACE Embilipitiya	93	0	0	0
Total	3,483	2,706	2,130	41,840

Plant availability is the availability recorded at 6 am on

June 22, 2023

Contribution to the Night Peak in MW

June 21, 2023

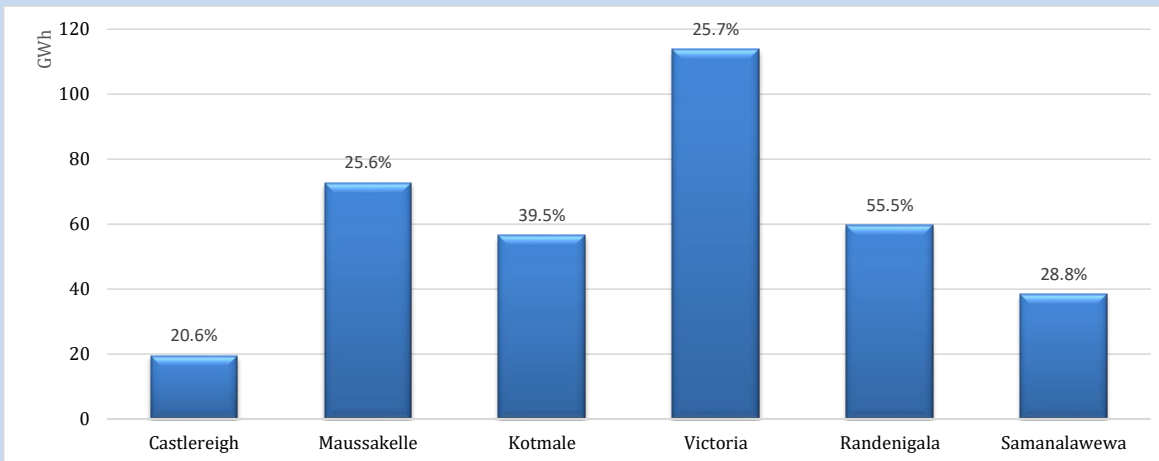


Night Peak*	2,134 MW
Day Peak Maximum Demand	1,984 MW
Day Peak Minimum Demand	1,710 MW
Off Peak Minimum Demand	1,282 MW

Above figures are excluding contribution from roof top solar, non telemetered solar and mini hydro plants

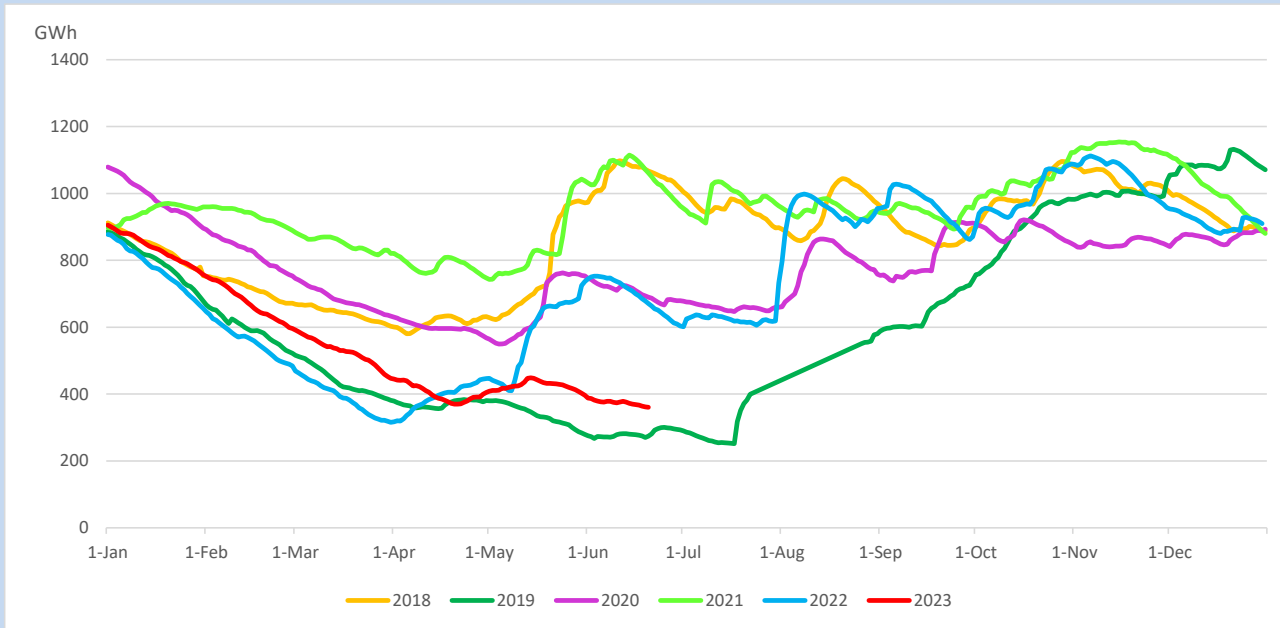
Reservoir Levels -

as at 06.00 Hr on June 22, 2023

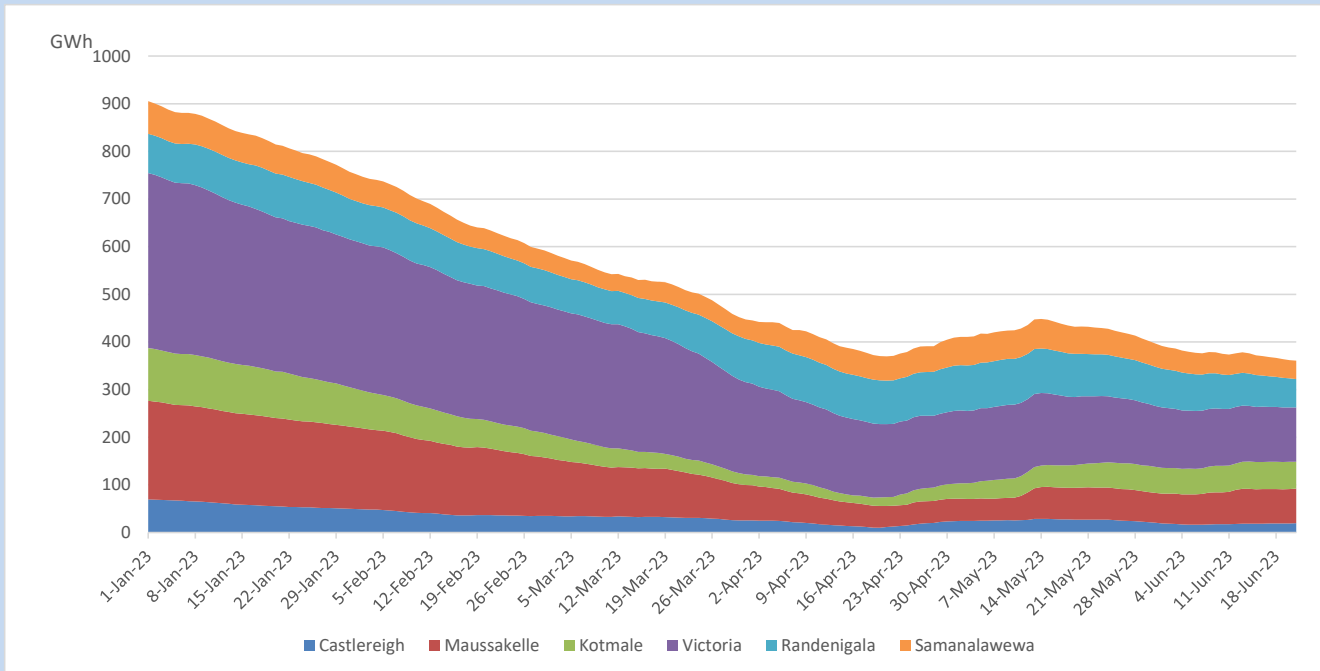


Total Reservoir Level	360.5 GWh
% of Total capacity	29.9%

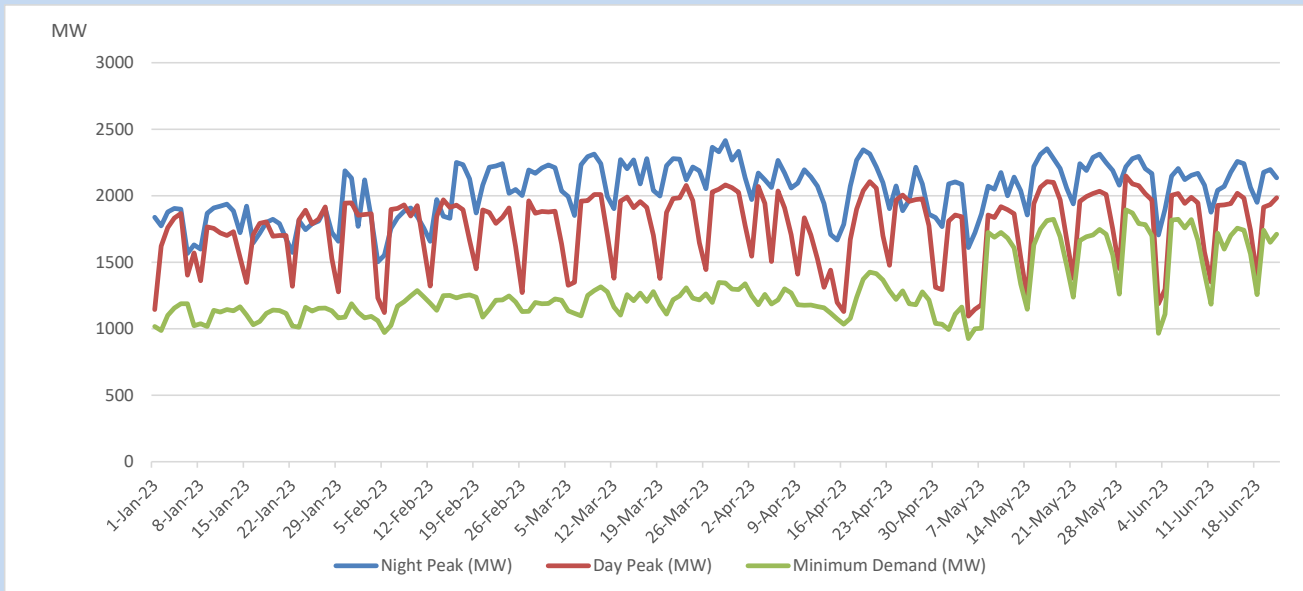
Comparison of Total Reservoir Storage Levels with Past Years



Variation of Major Hydro Reservoir Levels in the current year (GWh)



Variation of Demand during the current year

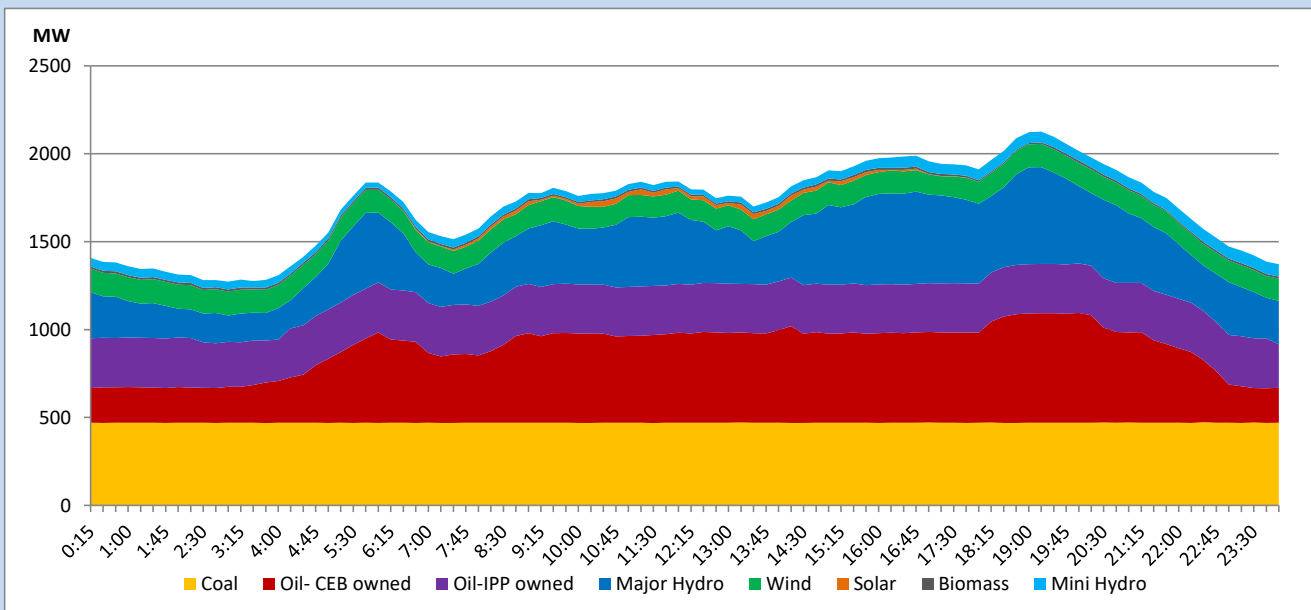


The above figures are excluding contribution from roof top solar, non telemetered solar and mini hydro plants

Daily Load Curve

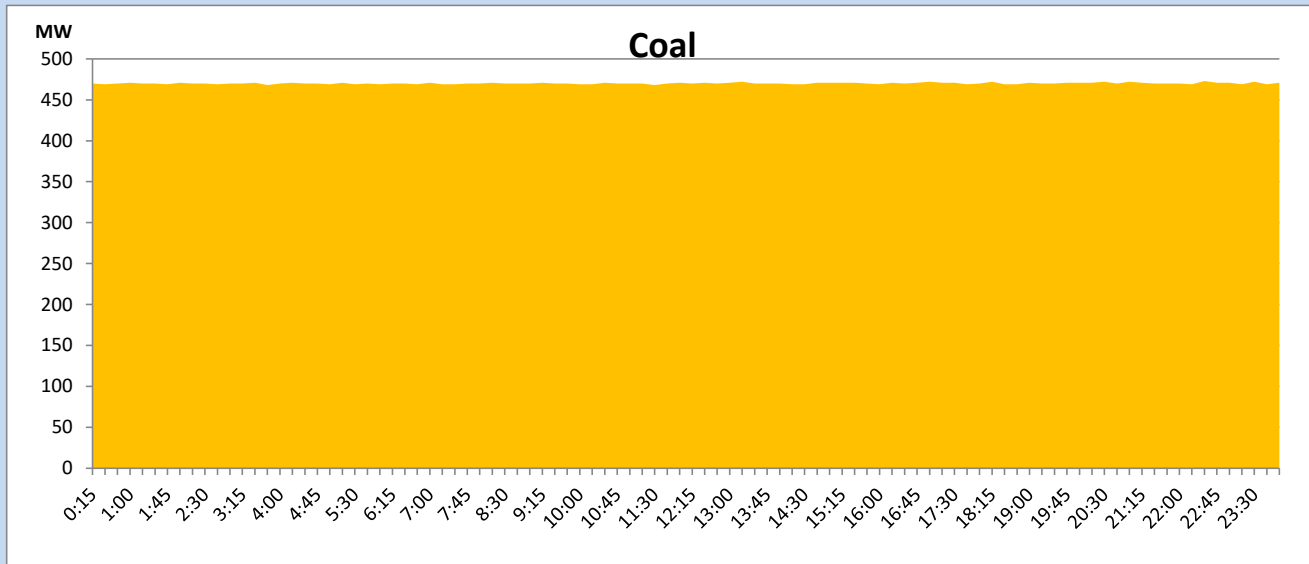
June 21, 2023

Solar and wind data is based on Telemetered Power Stations only



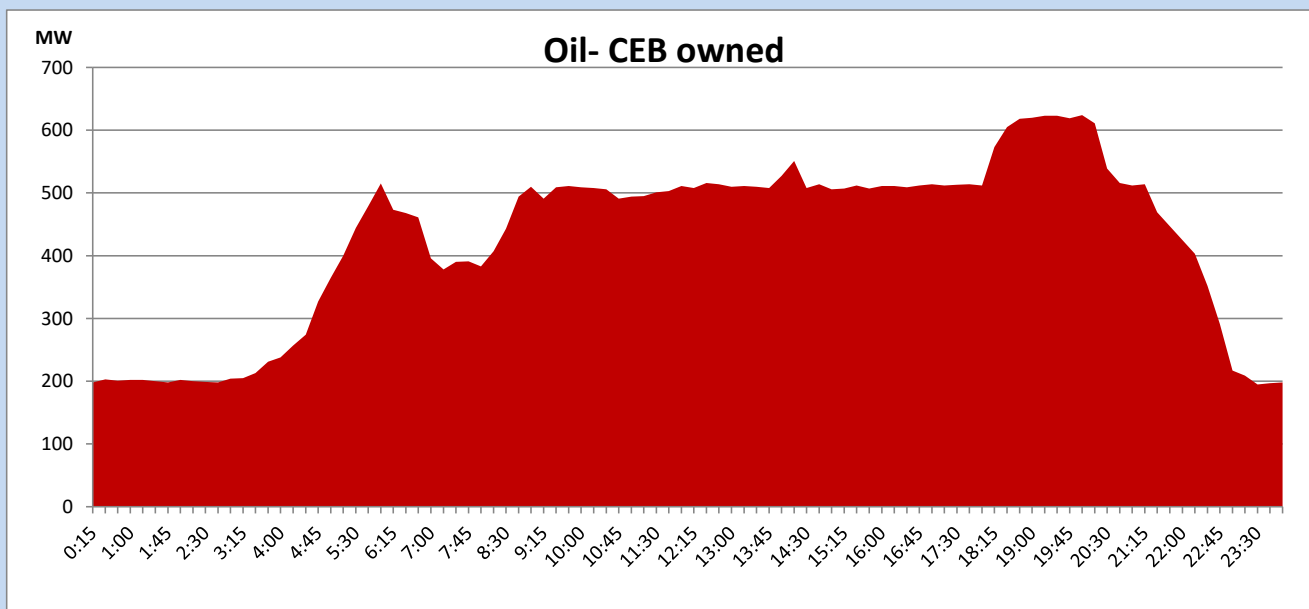
Coal Generation during

June 21, 2023



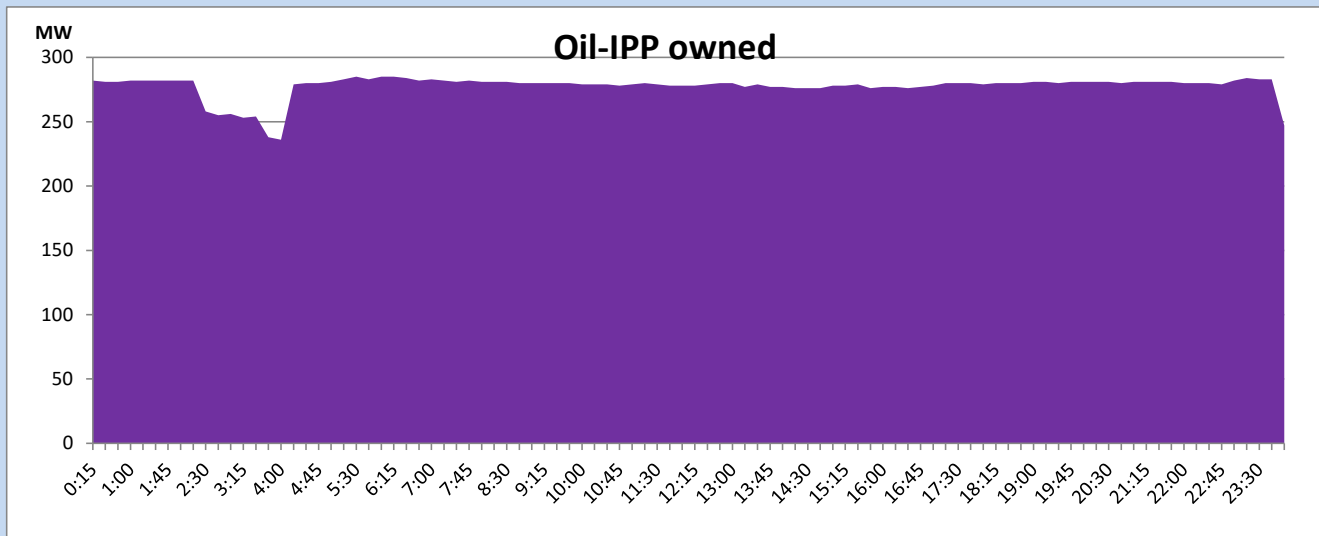
CEB Oil Plant Generation during

June 21, 2023



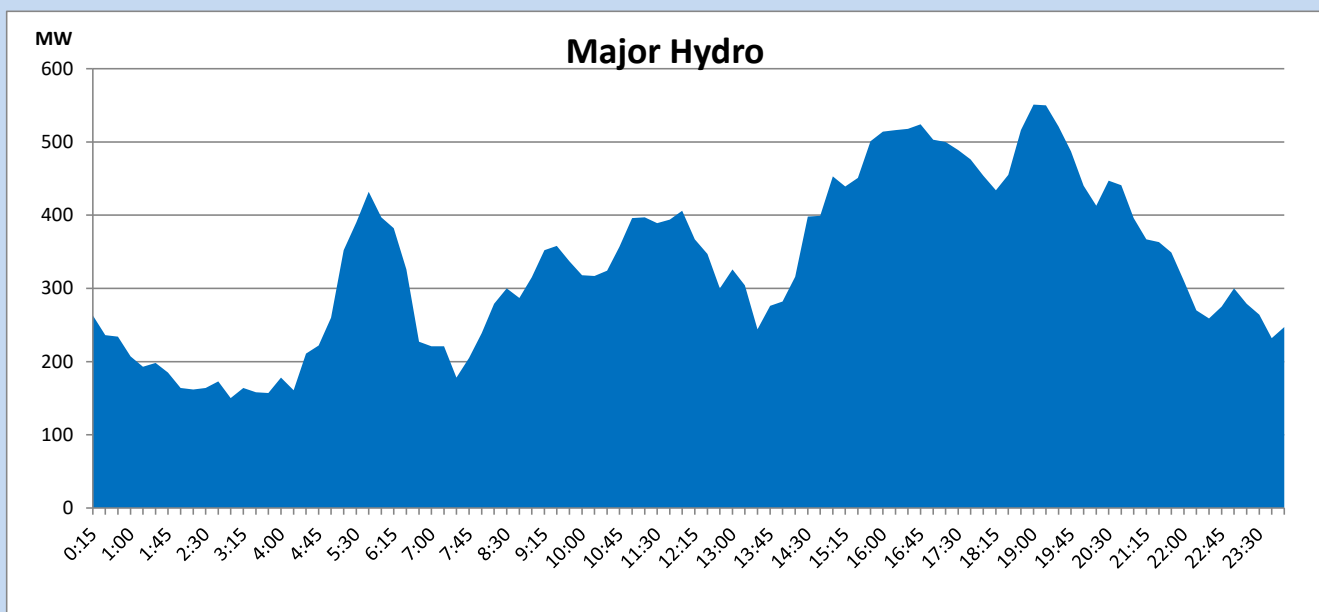
IPP Oil Plant Generation during

June 21, 2023



Major Hydro Generation during

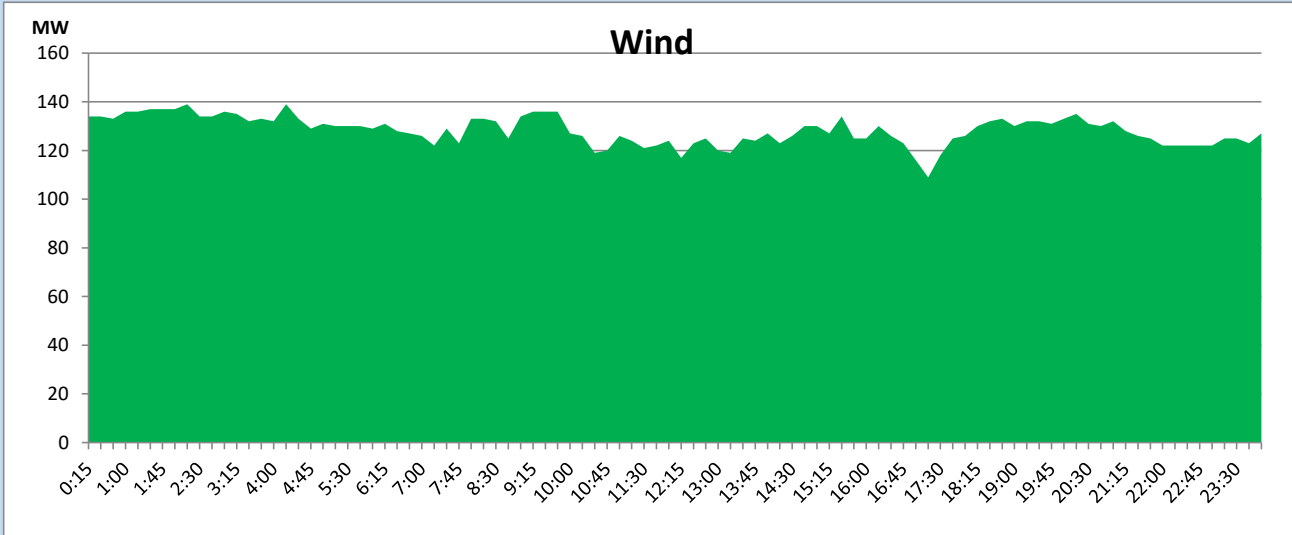
June 21, 2023



Wind Generation during

June 21, 2023

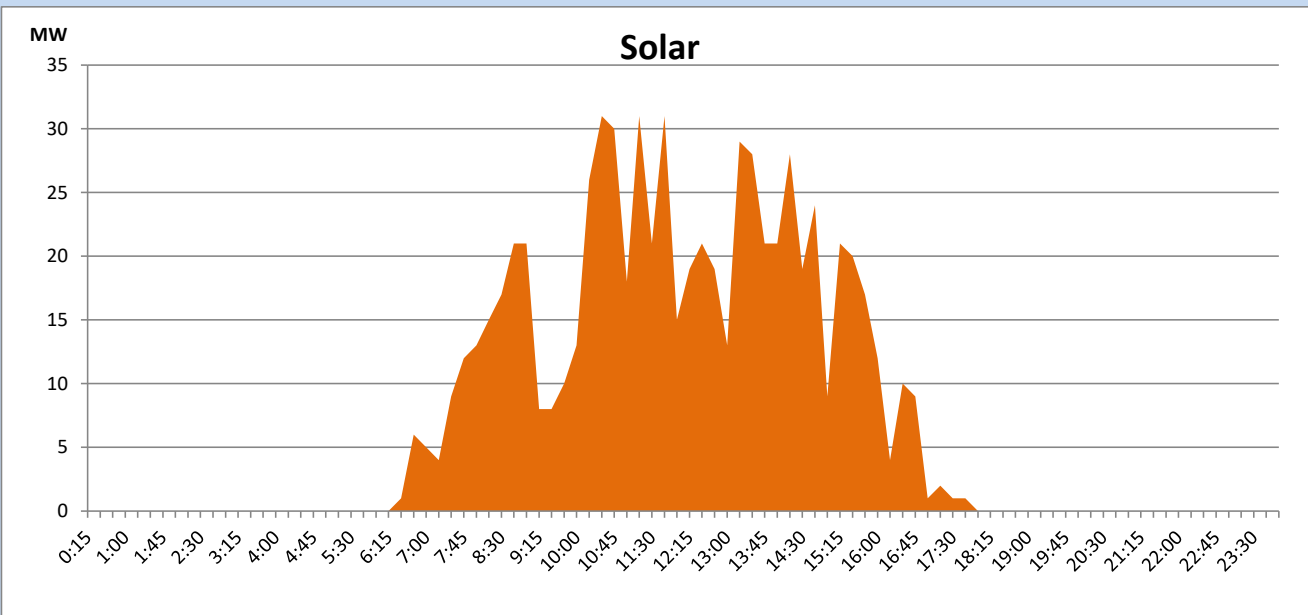
Based on Telemetered Power Stations only



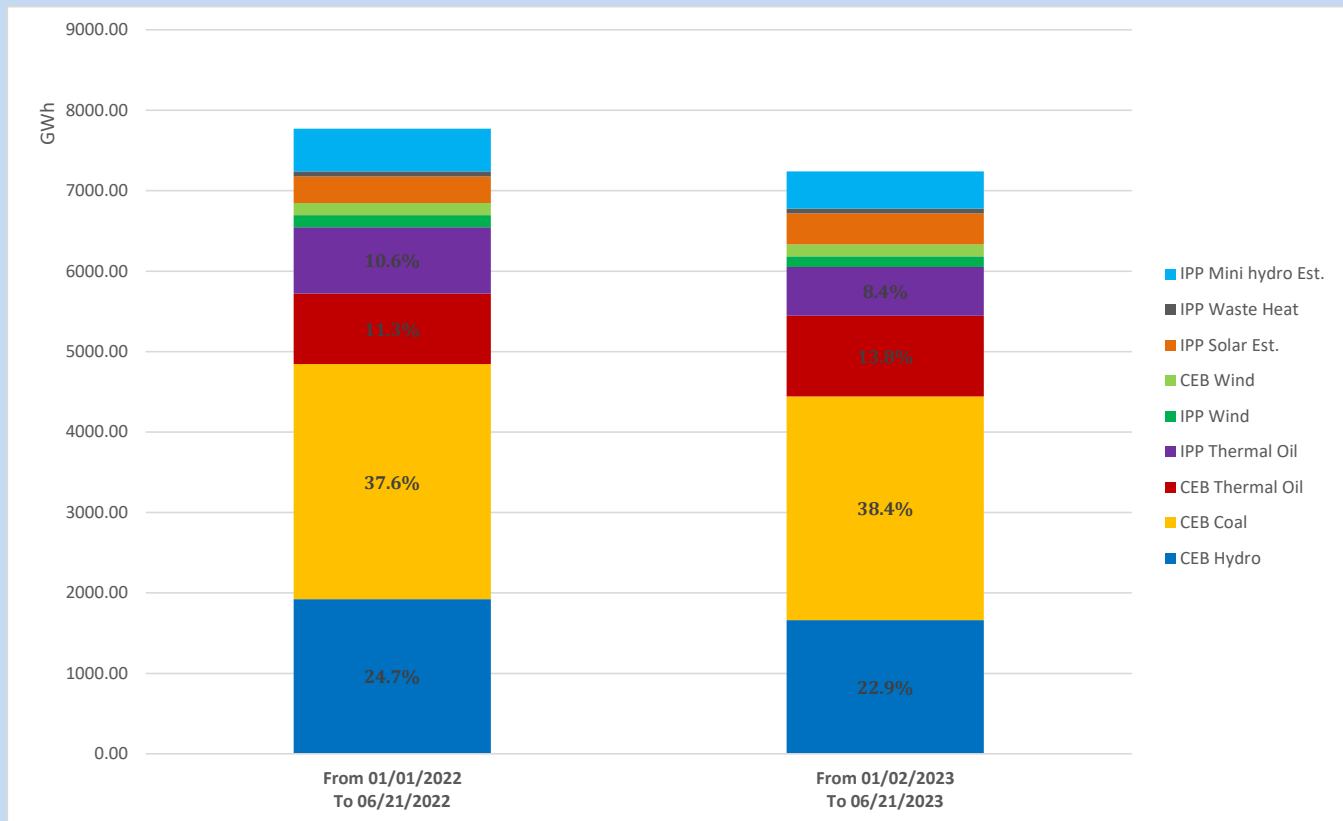
Solar Generation during

June 21, 2023

Based on Telemetered Power Stations only



Cumulative Dispatch Comparison with Last Year



The above figures are including contribution from roof top solar, non telemetered solar and mini hydro plants

Thermal Plant Fuel types

Power Station	Primary Fuel
CEB Thermal	
Sapugaskanda 1	Heavy Fuel
Sapugaskanda 2	Heavy Fuel
Kelanitissa Small Gas Turbines	Auto Diesel
GT 7 - Kelanitissa	Auto Diesel
Kelanitissa CCY	Naphtha or Diesel
Lakvijaya 1	Coal
Lakvijaya 2	Coal
Lakvijaya 3	Coal
Uthuru Janani	Heavy Fuel
Barge CEB	Heavy Fuel
KCCPS -2	Auto Diesel

Power Station	Primary Fuel
Private Thermal	
West Coast	Auto Diesel / Heavy Fuel

Major Incidents reported during the day

June 21, 2023

- 1) Embilipitiya-Hambanthota 132kV cct 02 tripped & A/R from both ends at 09:12hrs due to the operation of distance protection. At the same time, Hambanthota DPP tripped indicating a vector jump. Hambanthota DPP resumed generation at 09:18hrs.
- 2) Kesbewa 132/33kV T/F 01(which tripped at 04:49hrs) was normalized at 11:00hrs.
- 3) Kiribathkumbura 132/33kV T/F 04 tripped along with 33kV B/C at 12:01hrs due to the operation of earth fault protection, causing 33kV B/B 02 and feeders 07,08,10,11 and 12 to be dead. All affected feeders were normalized via 33kV B/B 01 by 12:36hrs. T/F 04 was normalized at 14:57hrs. Kiribathkumbura 33kV B/B 02 and B/C are yet to be normalized.
- 4) KPS GT 07 tripped at 14:21hrs rejecting 25MW from the system due to high vibration. KPS GT 07 resumed generation at 18:06hrs.
- 5) KCCPS-2 GT tripped soon after synchronizing at 03:45hrs(22.06.2023) due to a bleed valve malfunction. KCCPS-2 resumed generation at 05:25hrs.