

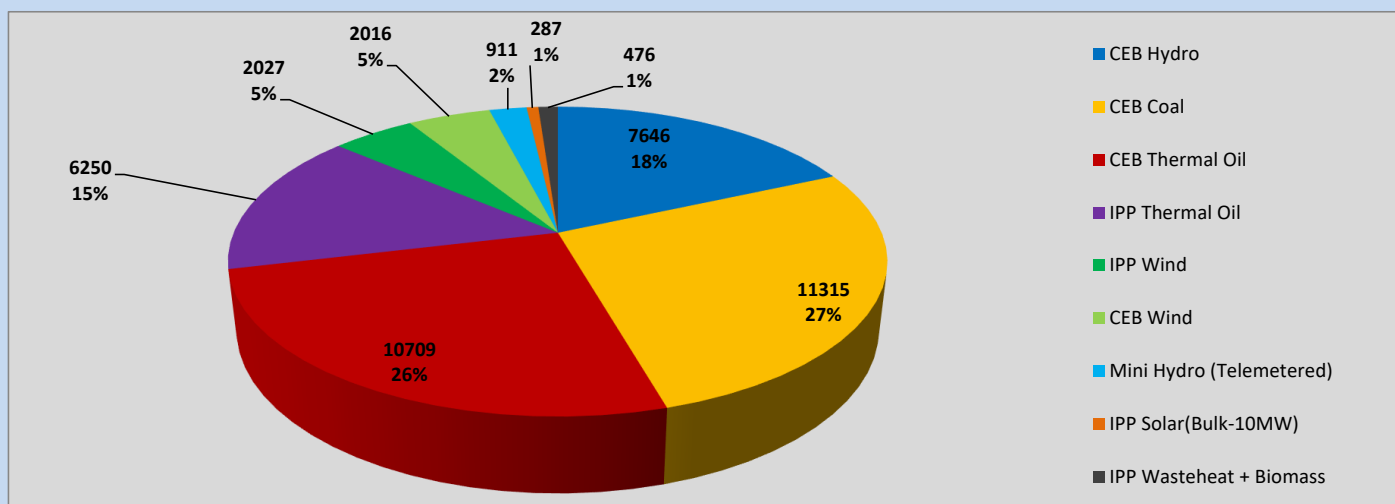
Generation and Reservoirs Statistics

June 20, 2023



PUBLIC UTILITIES COMMISSION OF SRI LANKA

Daily Generation Mix in MWh



Total Generation (Excluding estimated figures) =

41,637 MWh

Estimated figures of CEB generation report

Estimated unserved energy = 0.00 GWh

Estimated Mini Hydro (Non telemetered) = 3169 MWh

Estimated IPP Solar PV (Bulk 1-10MW) = 304 MWh

Estimated Solar Roof Top PV = 1890 MWh

Cumulative Dispatch

Following data excludes the contribution from roof top solar, non telemetered solar and mini hydro plants

For Current Month

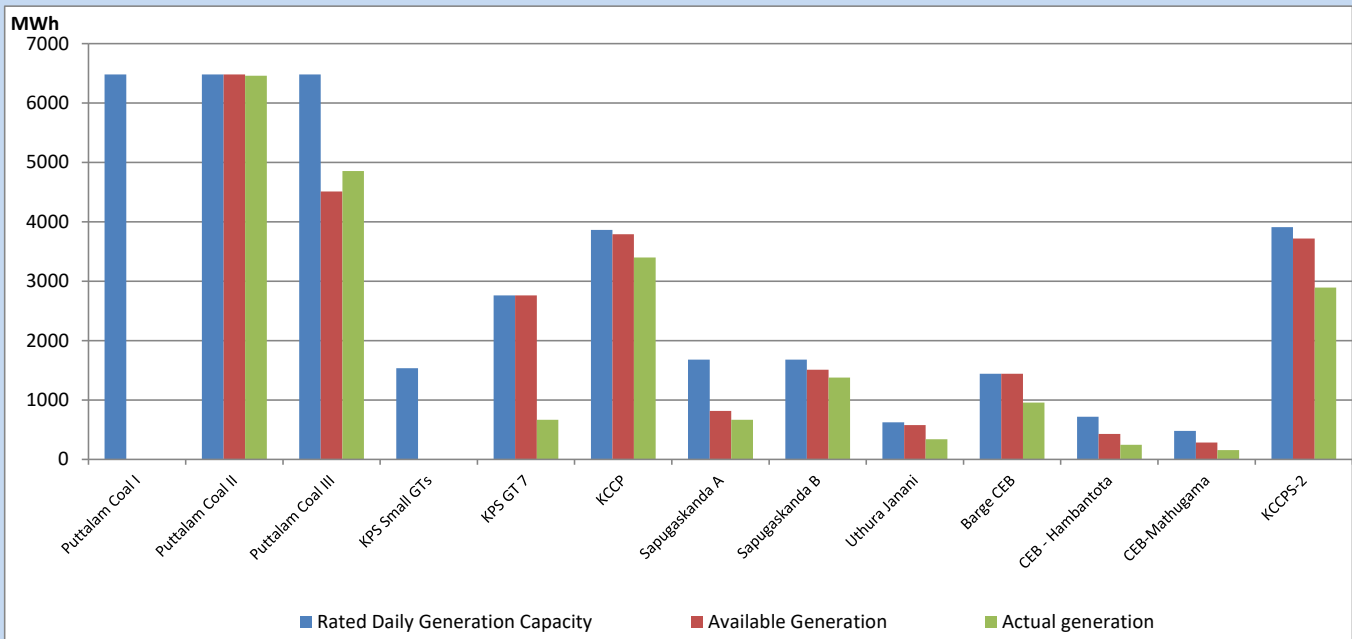
Category	Dispatch (GWh)	
CEB Hydro	175	22.00%
CEB Coal	276	34.57%
CEB Thermal Oil	147	18.39%
IPP Thermal	83	10.38%
SPP Wind	40	4.97%
CEB Wind	34	4.31%
Mini Hydro (Telemetered)	28	3.48%
IPP Solar (Bulk-10MW)	7	0.84%
IPP Wasteheat + BMP	9	1.07%
Total	798	

For Current Year

Category	Dispatch (GWh)	
CEB Hydro	1,656	25.26%
CEB Coal	2,771	42.26%
CEB Thermal Oil	994	15.16%
IPP Thermal	600	9.15%
SPP Wind	130	1.99%
CEB Wind	146	2.22%
Mini Hydro (Telemetered)	154	2.34%
IPP Solar (Bulk-10MW)	50	0.76%
IPP Wasteheat	56	0.85%
Total	6,556	

CEB owned Thermal Plant Dispatch

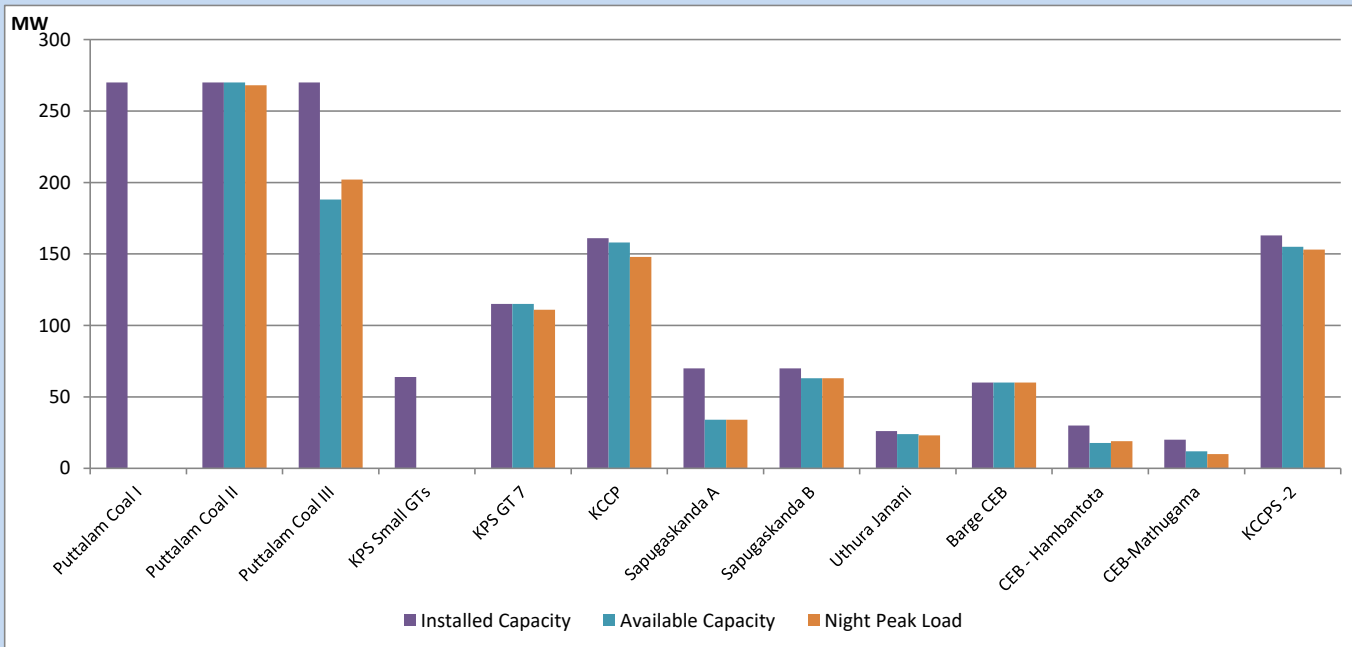
June 20, 2023



Available Generation is estimated based on plant availability at 6.00am on

June 21, 2023

CEB owned Thermal Plant Loading at the Night Peak



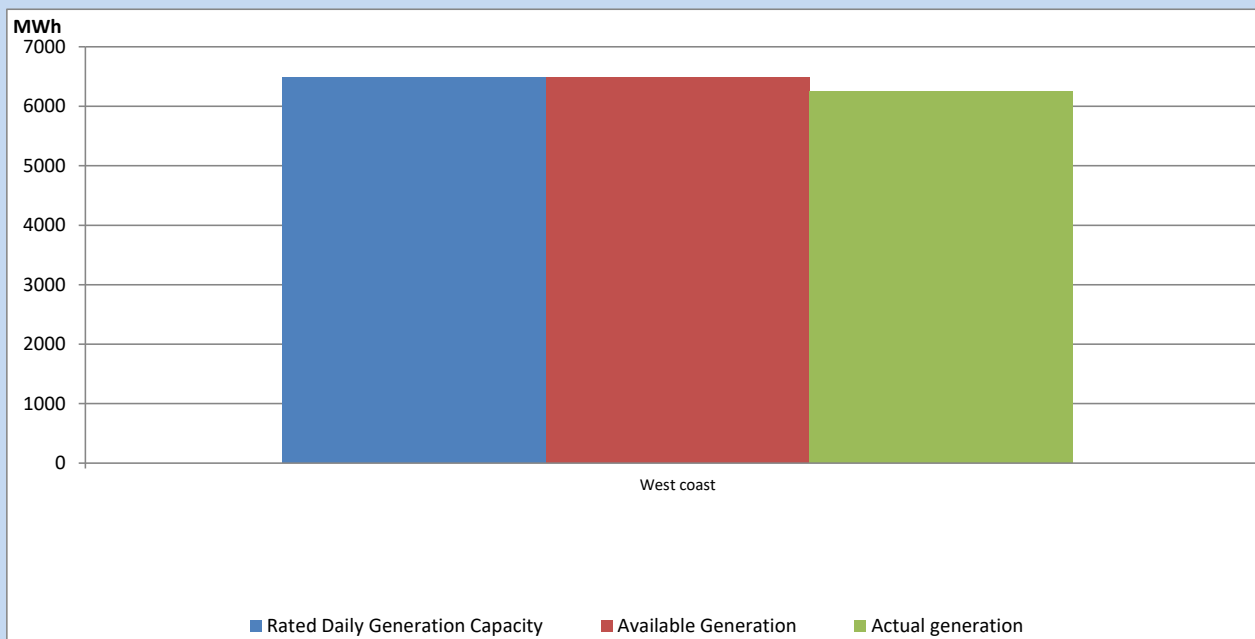
Note-

Plant availability is recorded at 6.00 am on

June 21, 2023

IPP owned Thermal Plant Dispatch

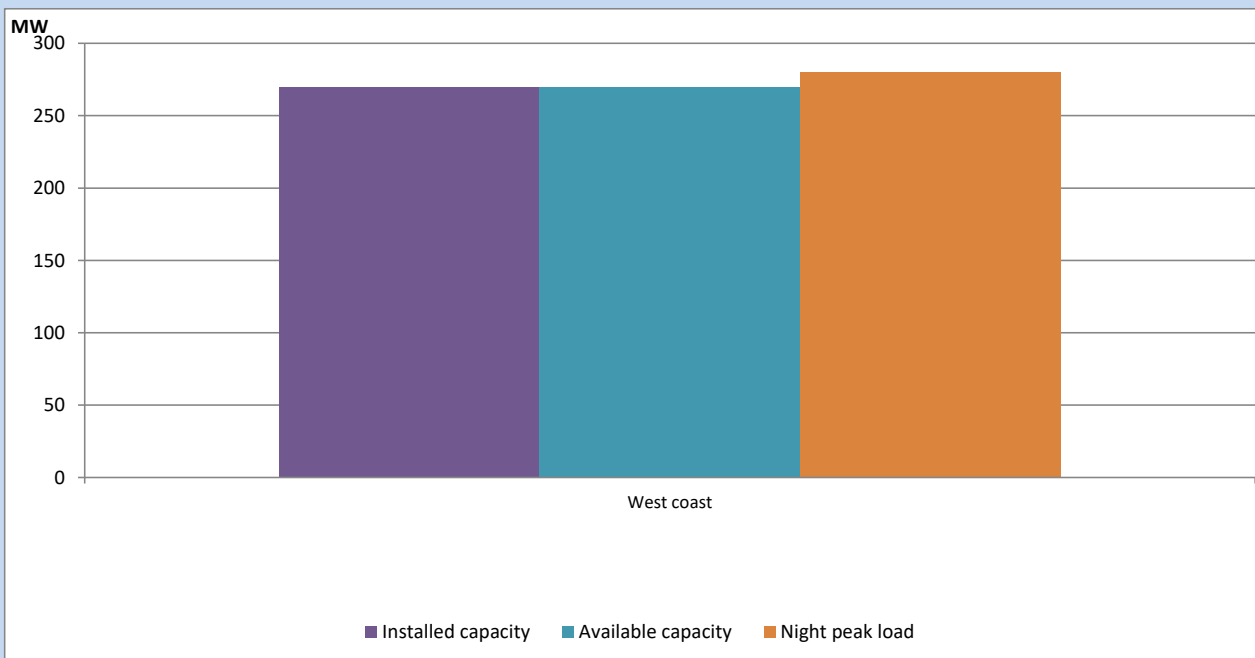
June 20, 2023



Available Generation is estimated based on plant availability at 6.00am on

June 21, 2023

IPP owned Thermal Plant Loading at the Night Peak

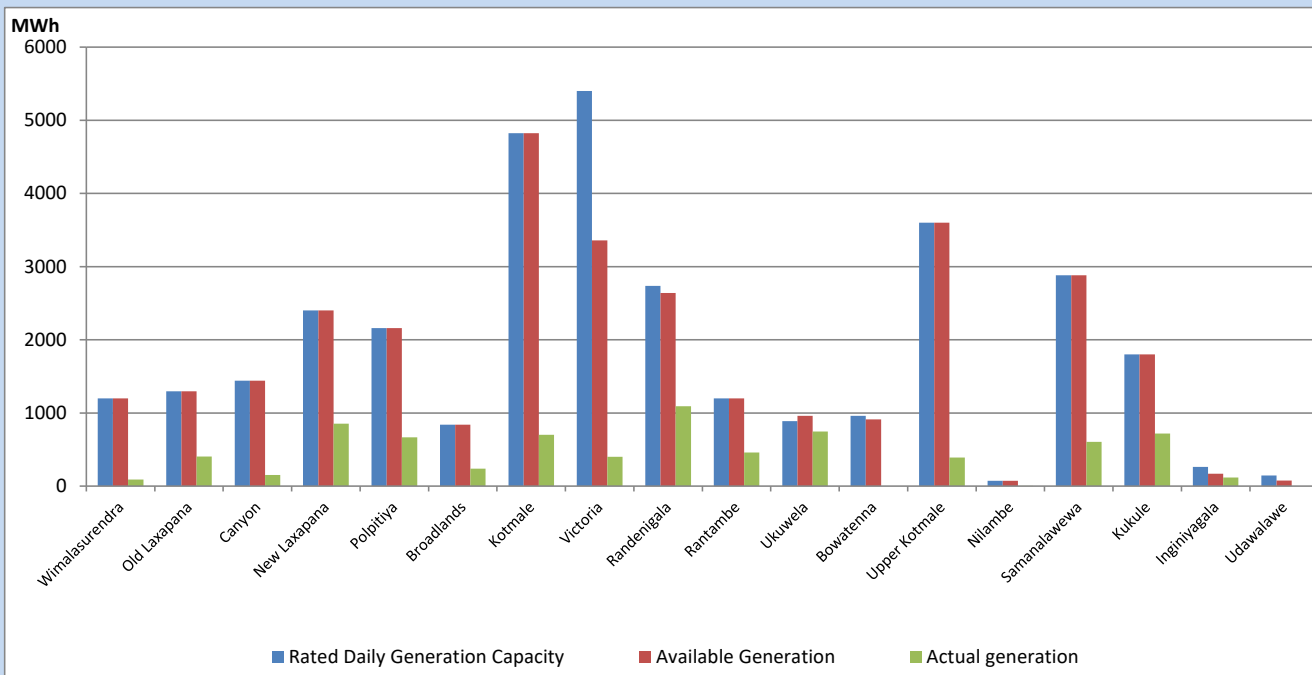


Note- Plant availability is recorded at 6.00 am on

June 21, 2023

Major Hydro Plant Dispatch

June 20, 2023

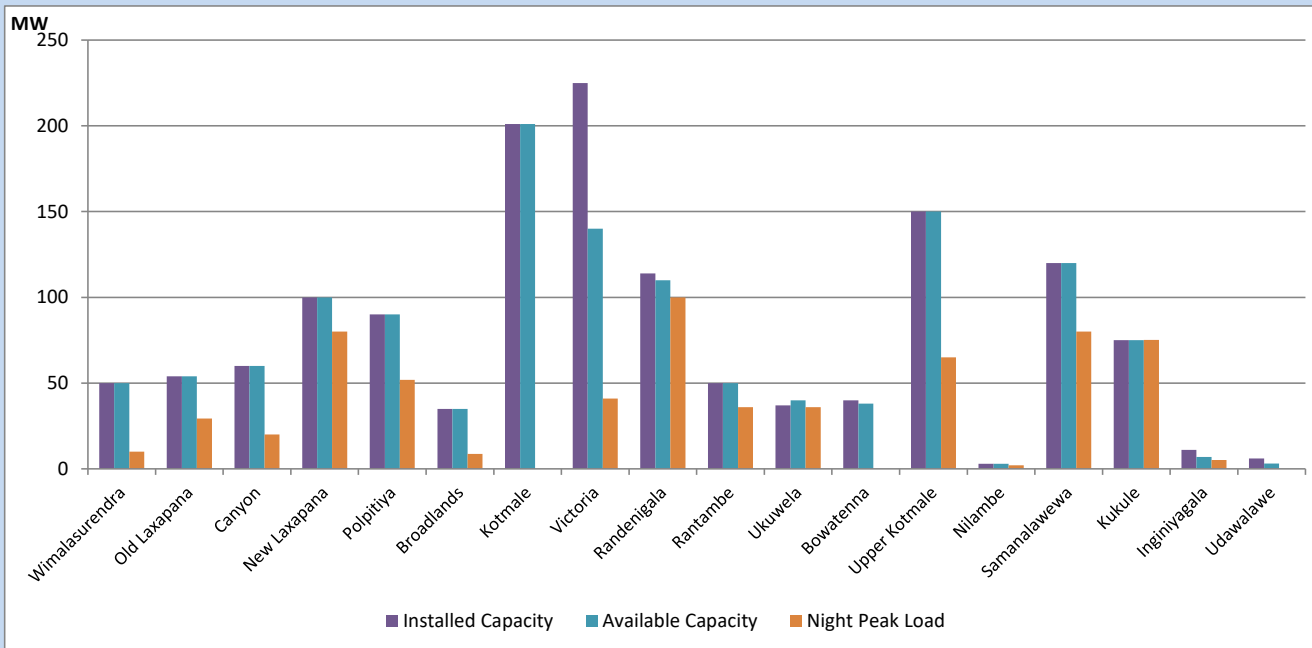


Available Generation is estimated based on plant availability at 6.00am on
Broadlands power plant is operating in the Commissioning Stage

June 21, 2023

Major Hydro Plant Loading at Night Peak

June 20, 2023



Note- Plant availability is recorded at 6.00 am on
Broadlands power plant is operating in the Commissioning Stage

June 21, 2023

Summary of Major Plant performance

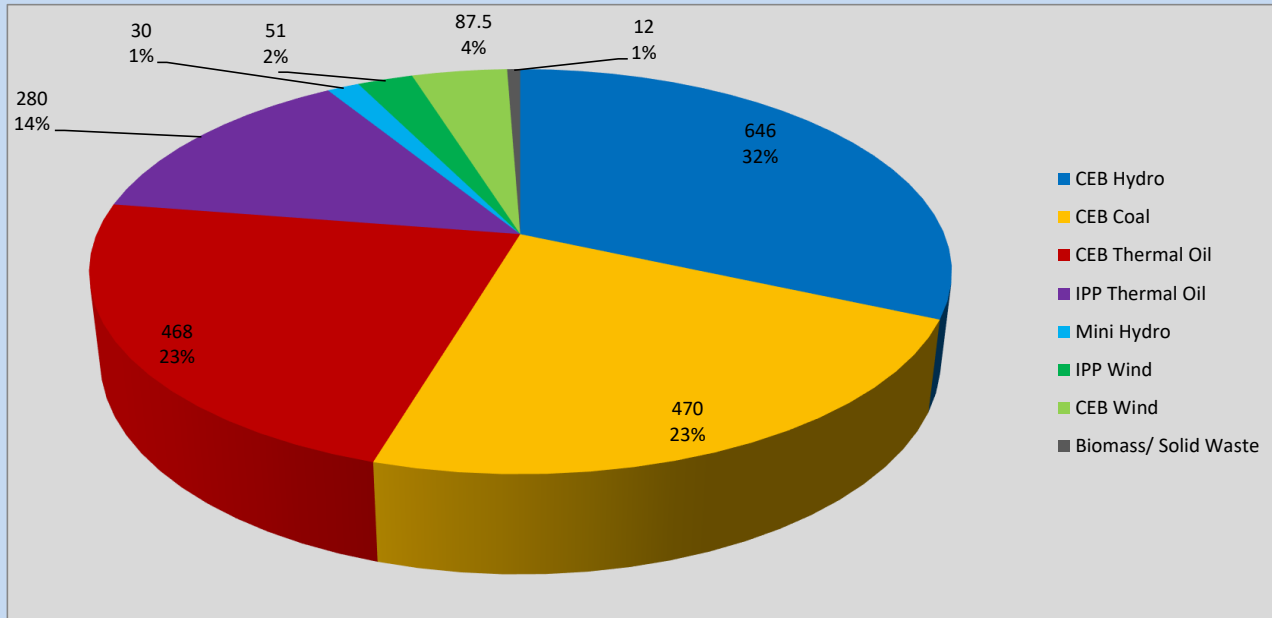
Plant	Installed Capacity	Plant Availability	Night peak Load	Plant Dispatch
	(MW)	(MW)	(MW)	(MWh)
Wimalasurendra	50	50	10	90
Old Laxapana	54	54	29	404
Canyon	60	60	20	152
New Laxapana	100	100	80	855
Polpitiya	90	90	52	667
Broadlands	35	35	9	239
Kotmale	201	201	0	700
Victoria	225	140	41	402
Randenigala	114	110	100	1,093
Rantambe	50	50	36	461
Ukuwela	37	40	36	747
Bowatenna	40	38	0	0
Upper Kotmale	150	150	65	392
Nilambe	3	3	2	5
Samanalawewa	120	120	80	606
Kukule	75	75	75	717
Inginiyagala	11	7	5	116
Udawalawe	6	3	0	0
Puttalam Coal I	270	0	0	0
Puttalam Coal II	270	270	268	6,460
Puttalam Coal III	270	188	202	4,855
KPS Small GTs	64	0	0	0
KPS GT 7	115	115	111	668
KCCP	161	158	148	3,400
Sapugaskanda A	70	34	34	666
Sapugaskanda B	70	63	63	1,379
Uthura Janani	26	24	23	341
Barge CEB	60	60	60	955
CEB-Hambantota	30	18	19	248
CEB-Mathugama	20	12	10	157
ACE Matara	24	0	0	0
Asia Power	50	0	0	0
KCCPS -2	163	155	153	2,895
West Coast	270	270	280	6,250
Nothern Power	36	0	0	0
ACE Embilipitiya	93	0	0	0
Total	3,483	2,693	2,192	41,637

Plant availability is the availability recorded at 6 am on

June 21, 2023

Contribution to the Night Peak in MW

June 20, 2023

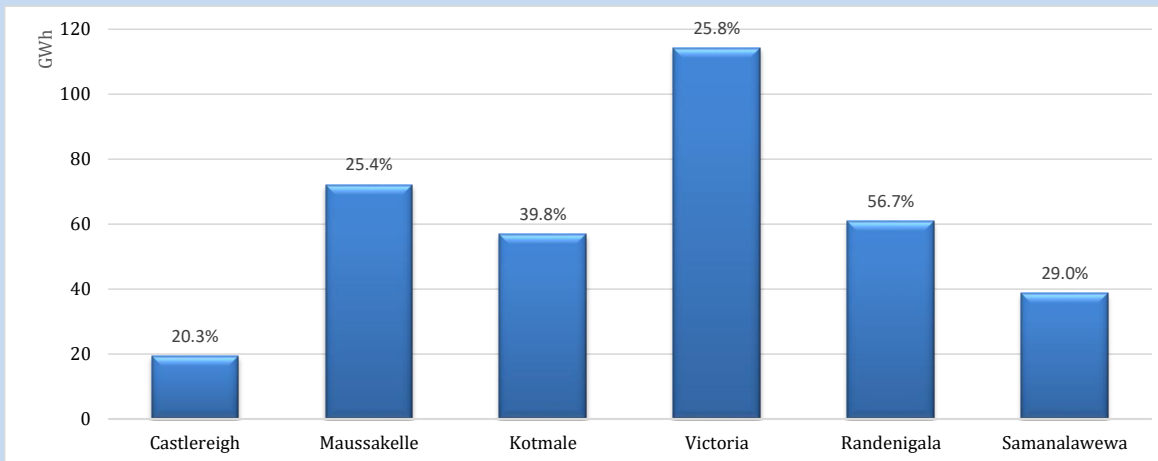


Night Peak*	2,198 MW
Day Peak Maximum Demand	1,933 MW
Day Peak Minimum Demand	1,650 MW
Off Peak Minimum Demand	1,262 MW

Above figures are excluding contribution from roof top solar, non telemetered solar and mini hydro plants

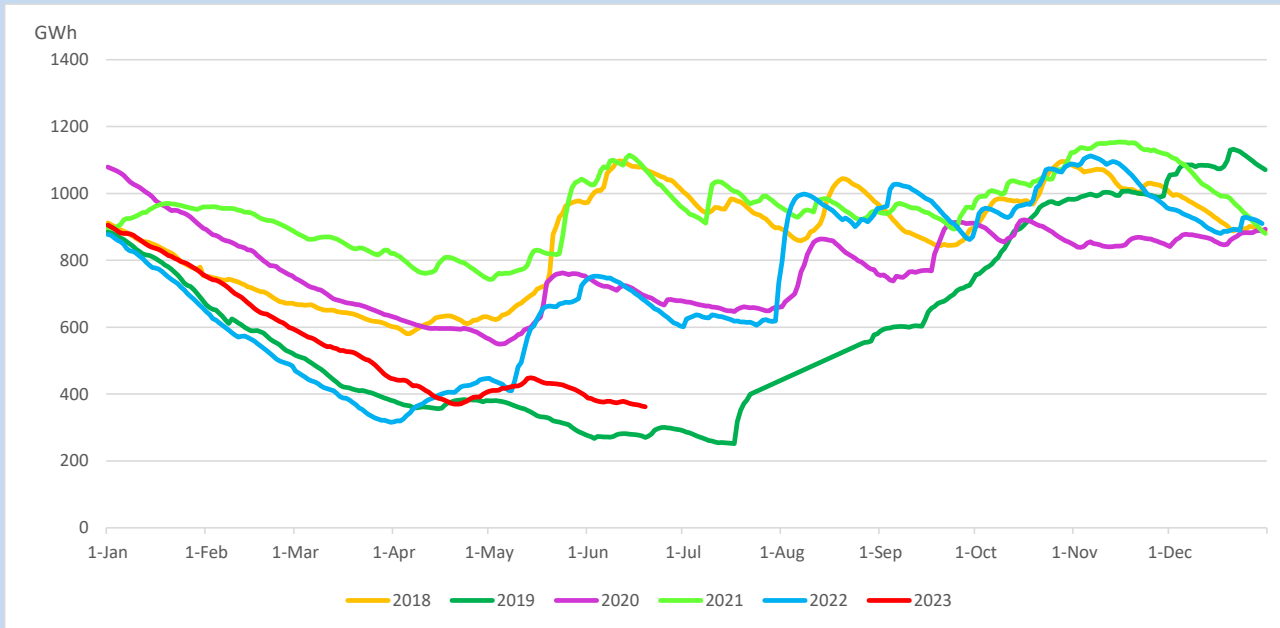
Reservoir Levels -

as at 06.00 Hr on June 21, 2023

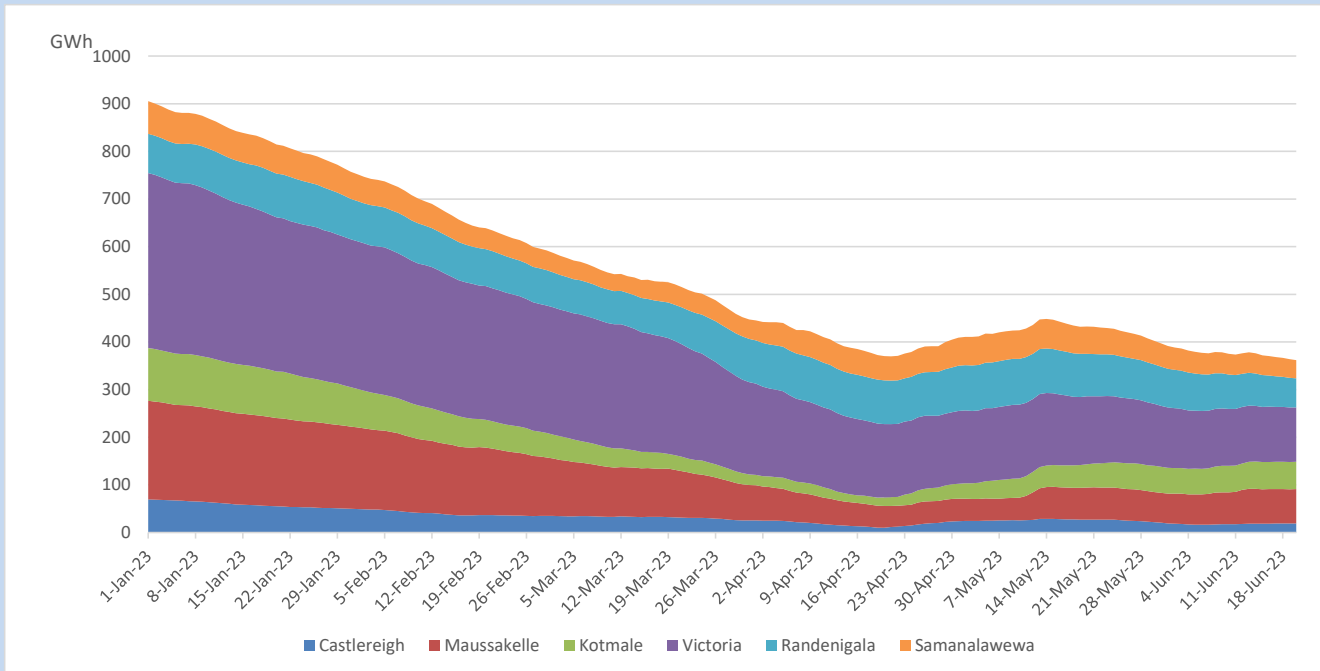


Total Reservoir Level	362 GWh
% of Total capacity	30.0%

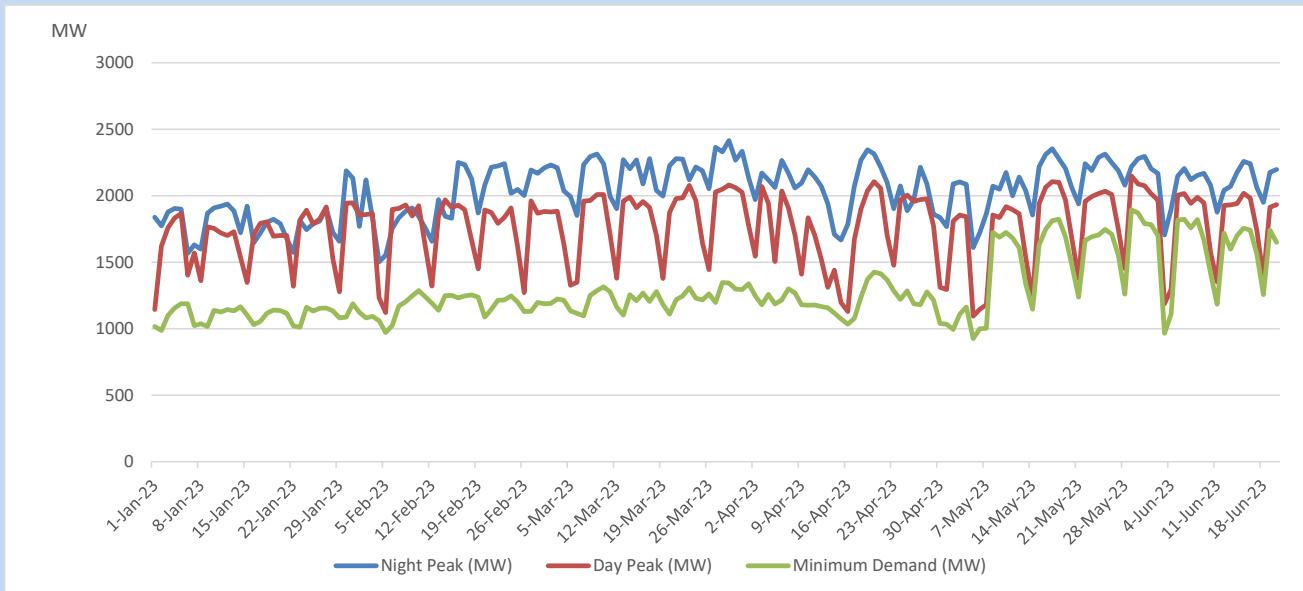
Comparison of Total Reservoir Storage Levels with Past Years



Variation of Major Hydro Reservoir Levels in the current year (GWh)



Variation of Demand during the current year

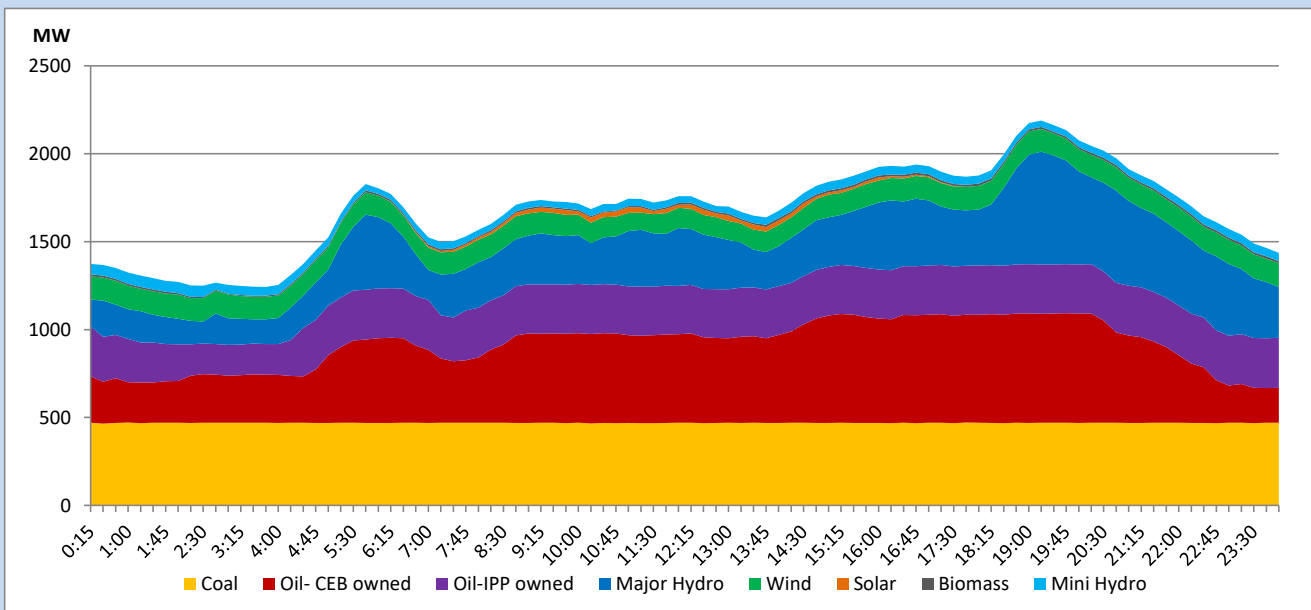


The above figures are excluding contribution from roof top solar, non telemetered solar and mini hydro plants

Daily Load Curve

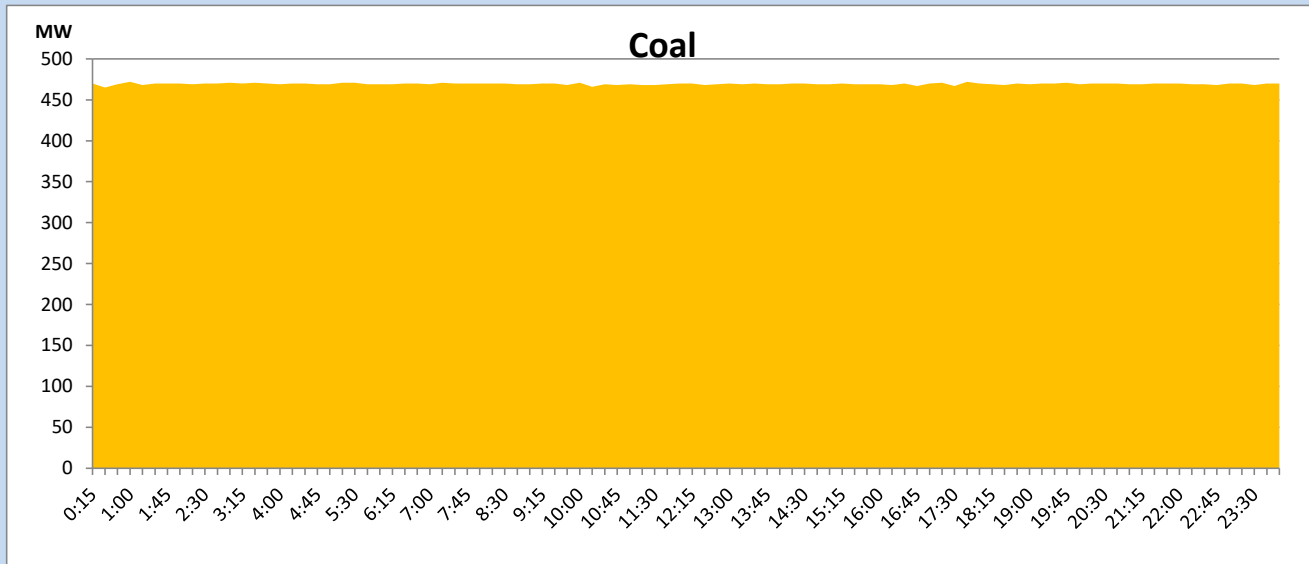
June 20, 2023

Solar and wind data is based on Telemetered Power Stations only



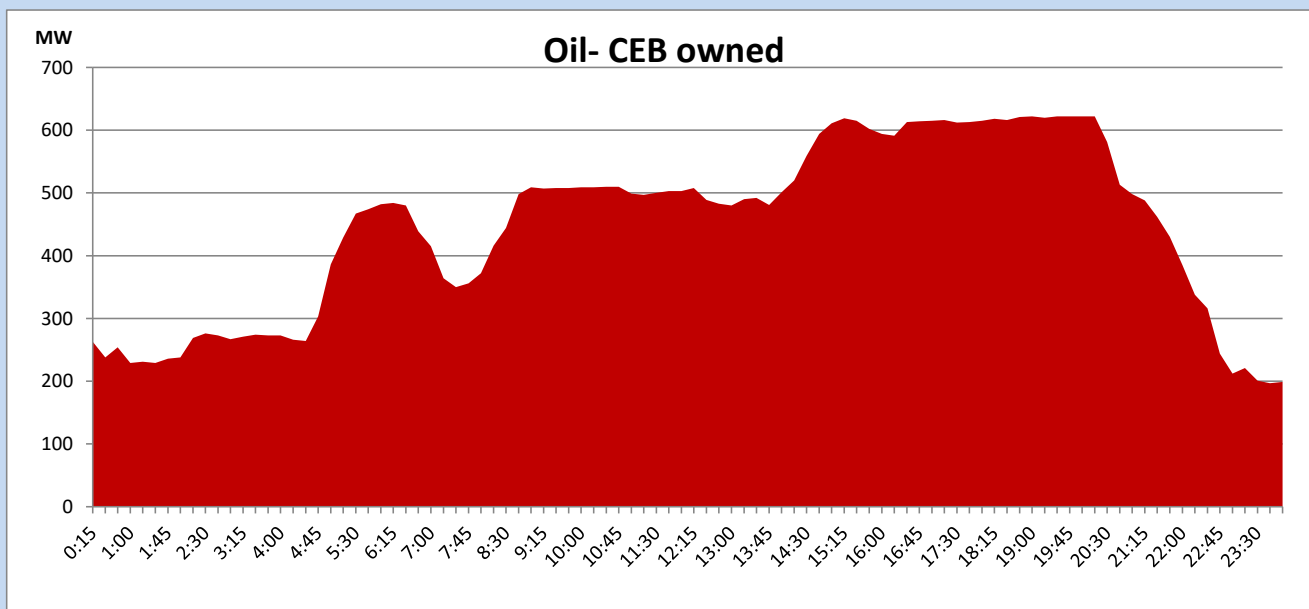
Coal Generation during

June 20, 2023



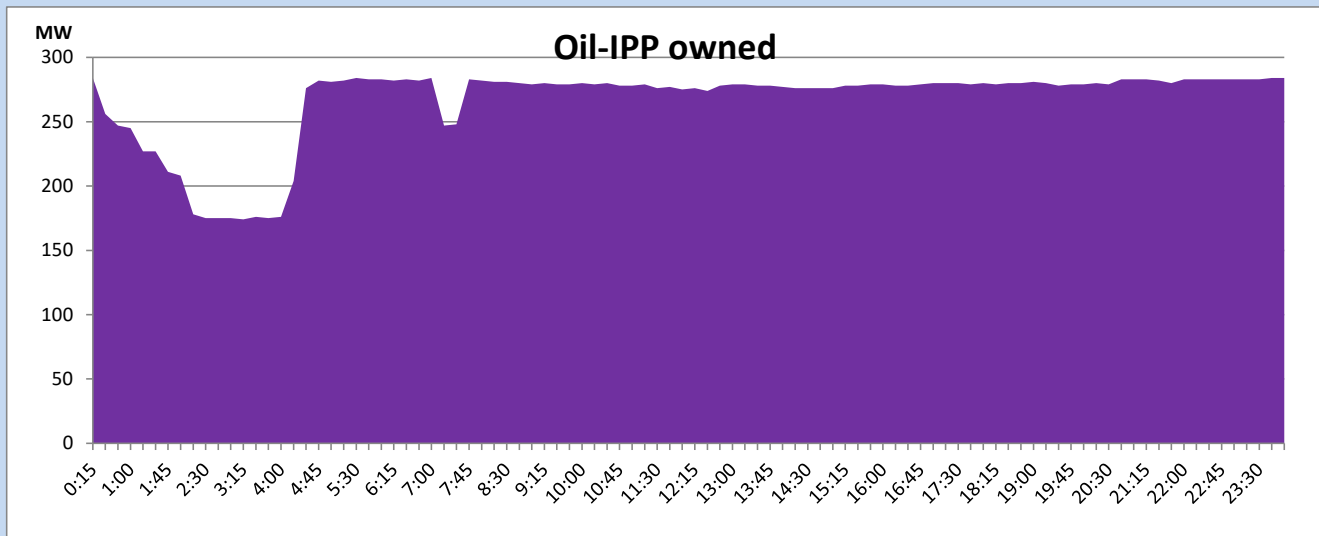
CEB Oil Plant Generation during

June 20, 2023



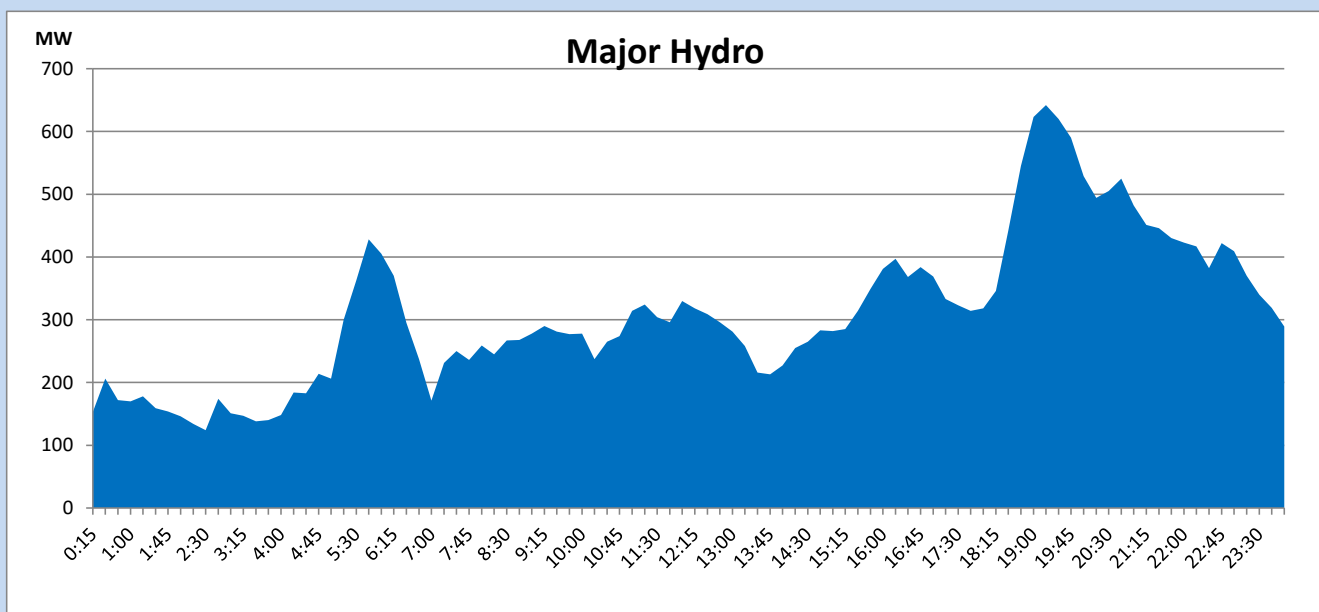
IPP Oil Plant Generation during

June 20, 2023



Major Hydro Generation during

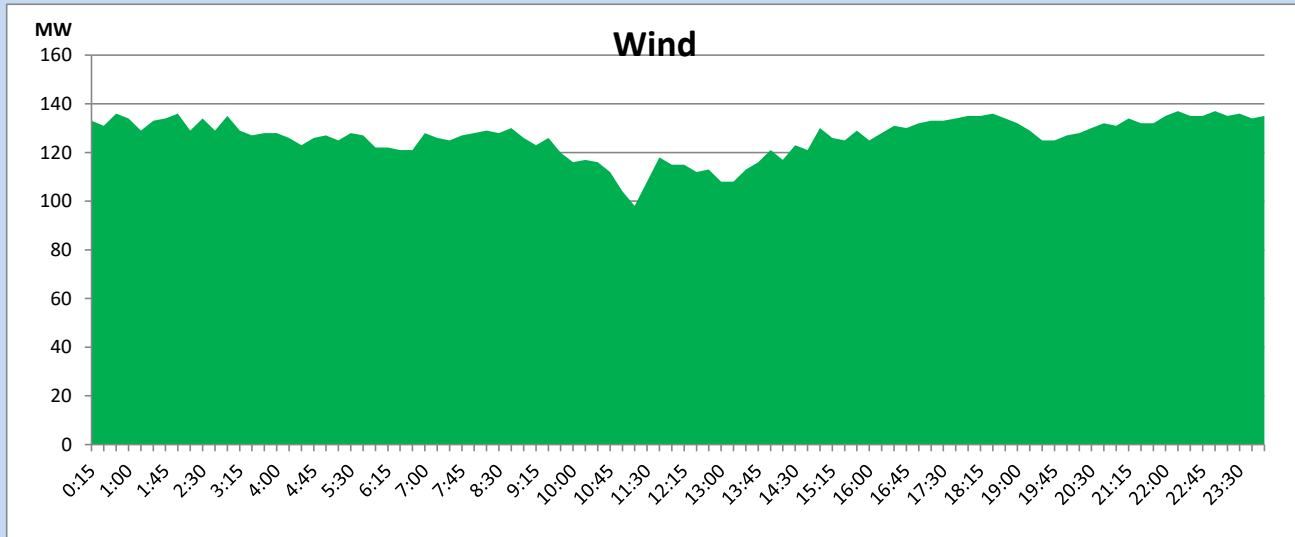
June 20, 2023



Wind Generation during

June 20, 2023

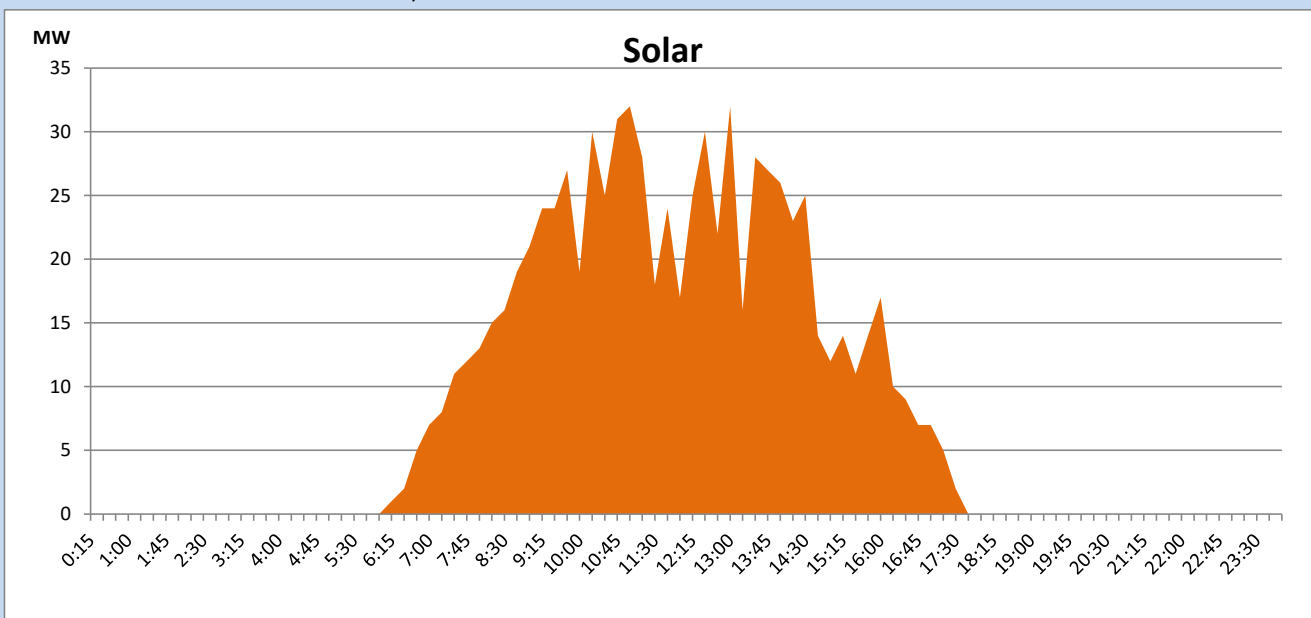
Based on Telemetered Power Stations only



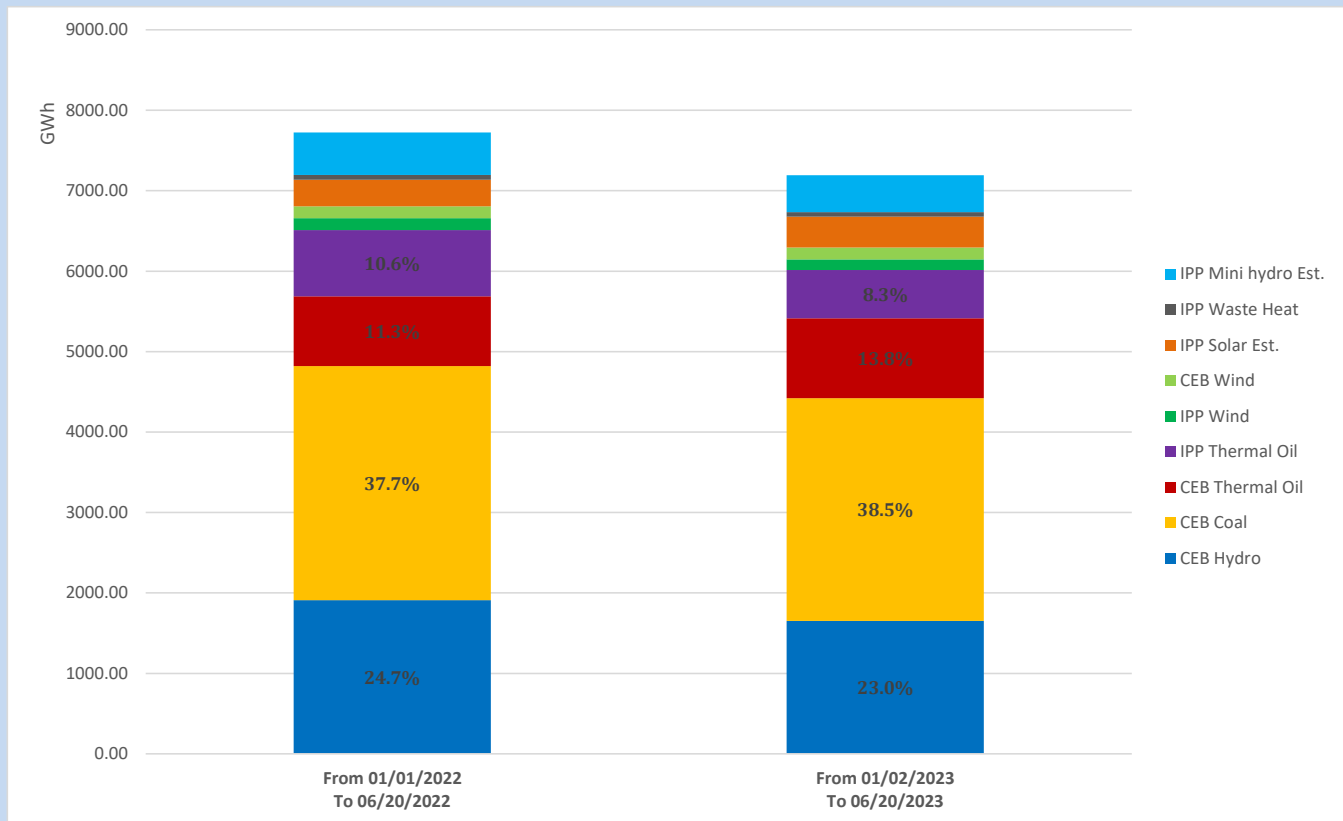
Solar Generation during

June 20, 2023

Based on Telemetered Power Stations only



Cumulative Dispatch Comparison with Last Year



The above figures are including contribution from roof top solar, non telemetered solar and mini hydro plants

Thermal Plant Fuel types

Power Station	Primary Fuel
CEB Thermal	
Sapugaskanda 1	Heavy Fuel
Sapugaskanda 2	Heavy Fuel
Kelanitissa Small Gas Turbines	Auto Diesel
GT 7 - Kelanitissa	Auto Diesel
Kelanitissa CCY	Naphtha or Diesel
Lakvijaya 1	Coal
Lakvijaya 2	Coal
Lakvijaya 3	Coal
Uthuru Janani	Heavy Fuel
Barge CEB	Heavy Fuel
KCCPS -2	Auto Diesel

Power Station	Primary Fuel
Private Thermal	
West Coast	Auto Diesel / Heavy Fuel

Major Incidents reported during the day

June 20, 2023

- 1) New Laxapana Unit 01 performed a forced shutdown at 11:16hrs due to low turbine guide bearing oil level. New Laxapana Unit 01 resumed generation at 14:02hrs.
- 2) Kesbewa 132/33kV T/F 01 tripped along with 33kV feeder 01 at 04:39hrs(21/06/2023) causing all 33kV feeders to be dead, due to the operation of O/C and E/F protection. All affected feeders were normalized via Kesbewa 132/33kV T/F 02 by 05:15hrs (21/06/2023). Kesbewa 132/33kV T/F 01 is yet to be