

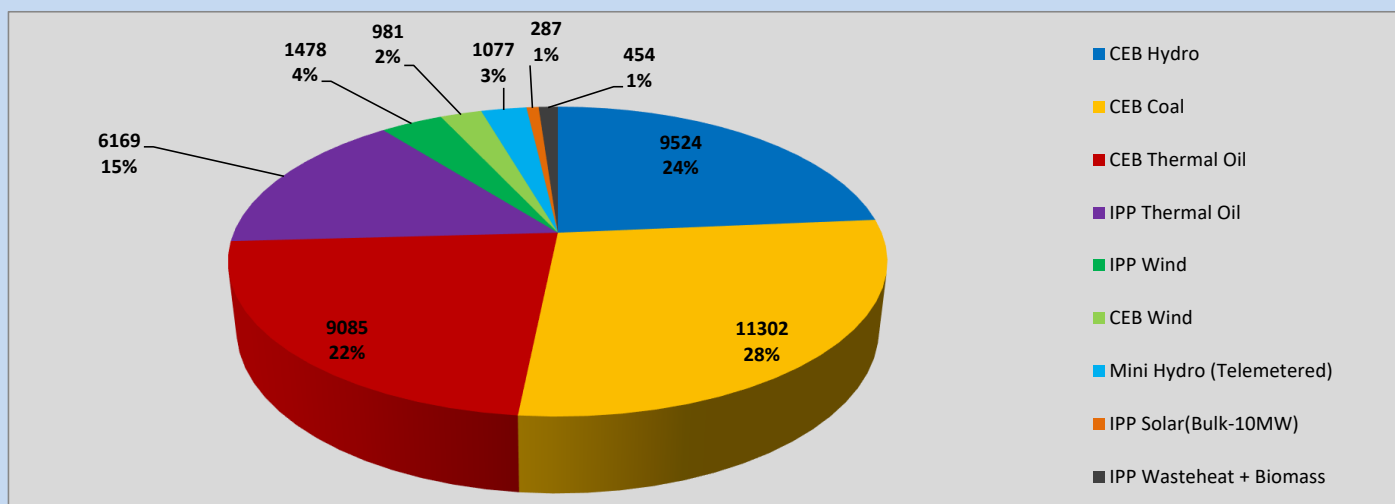
Generation and Reservoirs Statistics

June 19, 2023



PUBLIC UTILITIES COMMISSION OF SRI LANKA

Daily Generation Mix in MWh



Total Generation (Excluding estimated figures) =

40,357 MWh

Estimated figures of CEB generation report

Estimated unserved energy = 0.00 GWh

Estimated Mini Hydro (Non telemetered) = 3003 MWh

Estimated IPP Solar PV (Bulk 1-10MW) = 304 MWh

Estimated Solar Roof Top PV = 1890 MWh

Cumulative Dispatch

Following data excludes the contribution from roof top solar, non telemetered solar and mini hydro plants

For Current Month

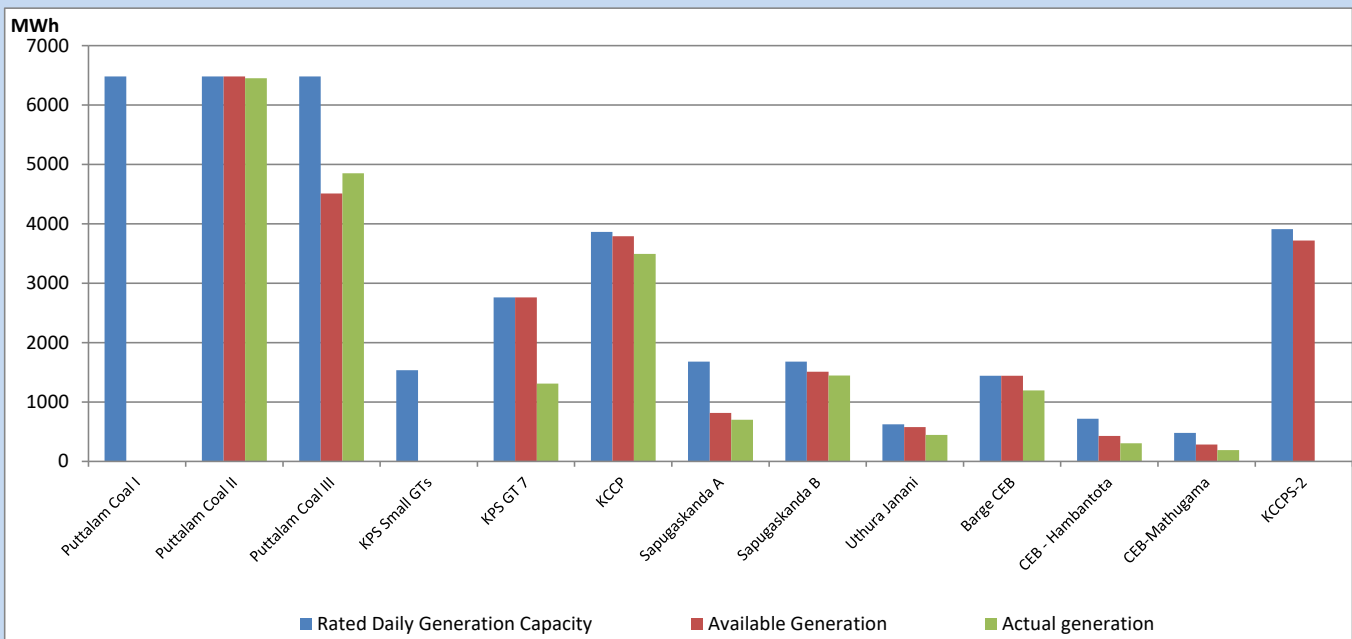
Category	Dispatch (GWh)	Percentage
CEB Hydro	168	22.20%
CEB Coal	264	34.98%
CEB Thermal Oil	136	17.99%
IPP Thermal	77	10.12%
SPP Wind	38	4.98%
CEB Wind	32	4.28%
Mini Hydro (Telemetered)	27	3.55%
IPP Solar (Bulk-10MW)	6	0.85%
IPP Wasteheat + BMP	8	1.06%
Total	756	

For Current Year

Category	Dispatch (GWh)	Percentage
CEB Hydro	1,648	25.31%
CEB Coal	2,759	42.36%
CEB Thermal Oil	983	15.10%
IPP Thermal	594	9.11%
SPP Wind	128	1.97%
CEB Wind	144	2.20%
Mini Hydro (Telemetered)	153	2.34%
IPP Solar (Bulk-10MW)	50	0.76%
IPP Wasteheat	55	0.85%
Total	6,514	

CEB owned Thermal Plant Dispatch

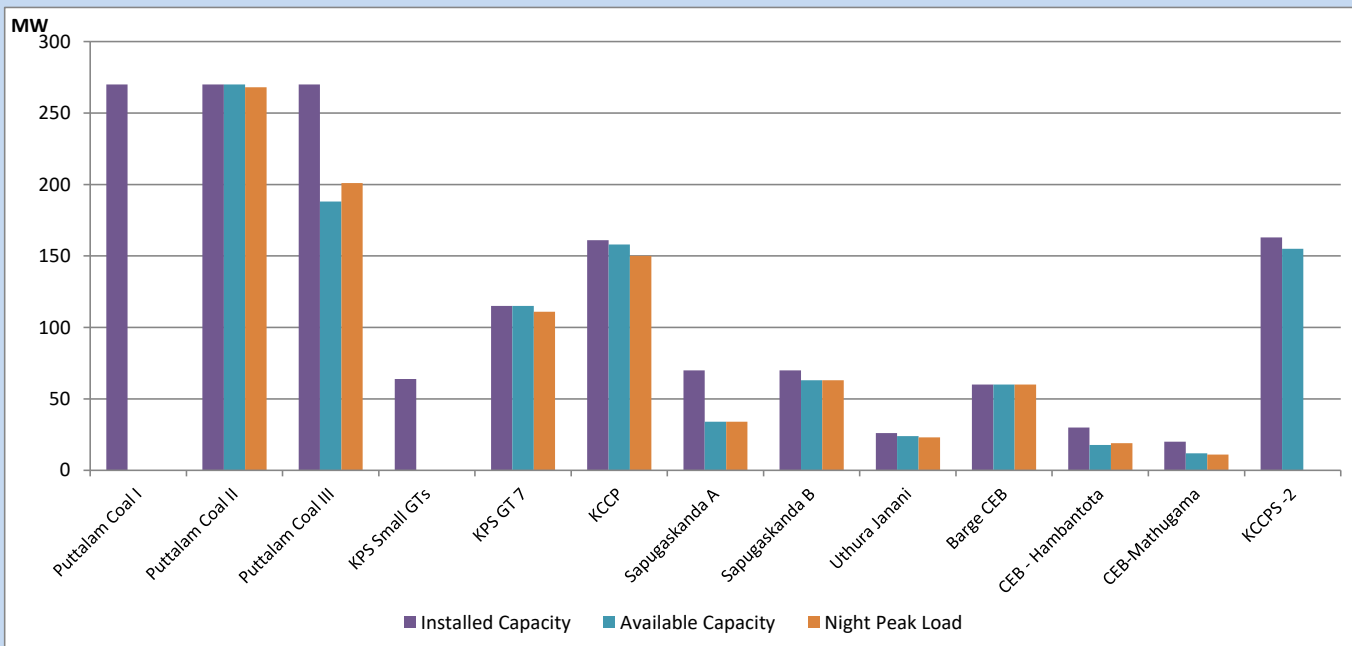
June 19, 2023



Available Generation is estimated based on plant availability at 6.00am on

June 20, 2023

CEB owned Thermal Plant Loading at the Night Peak



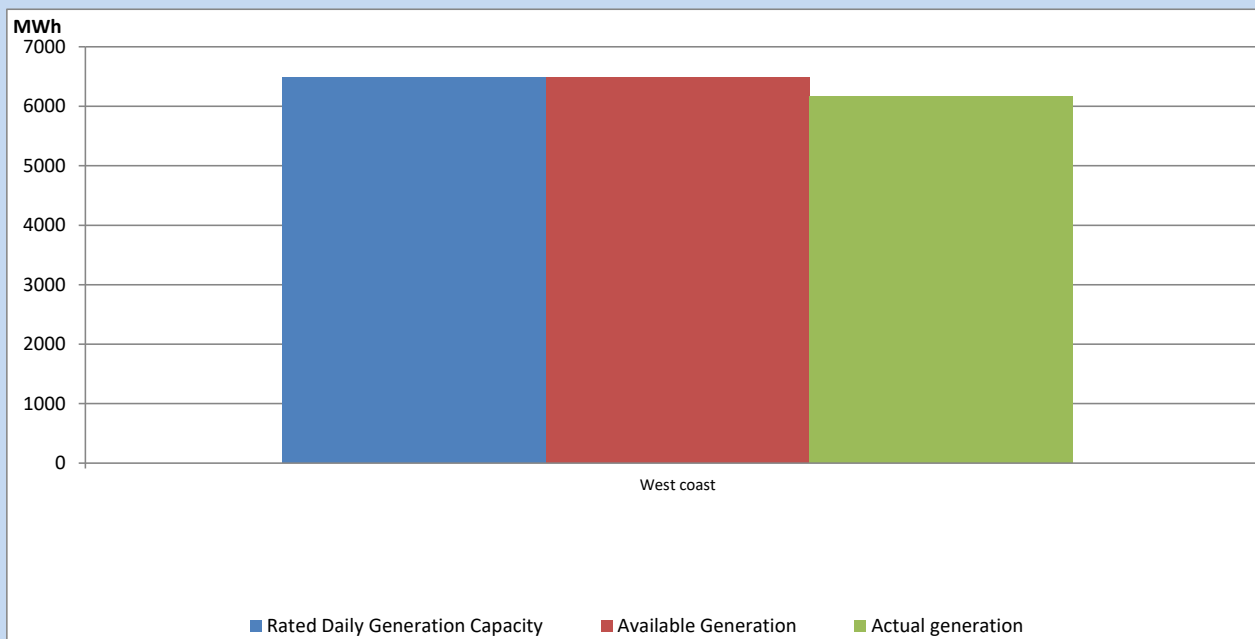
Note-

Plant availability is recorded at 6.00 am on

June 20, 2023

IPP owned Thermal Plant Dispatch

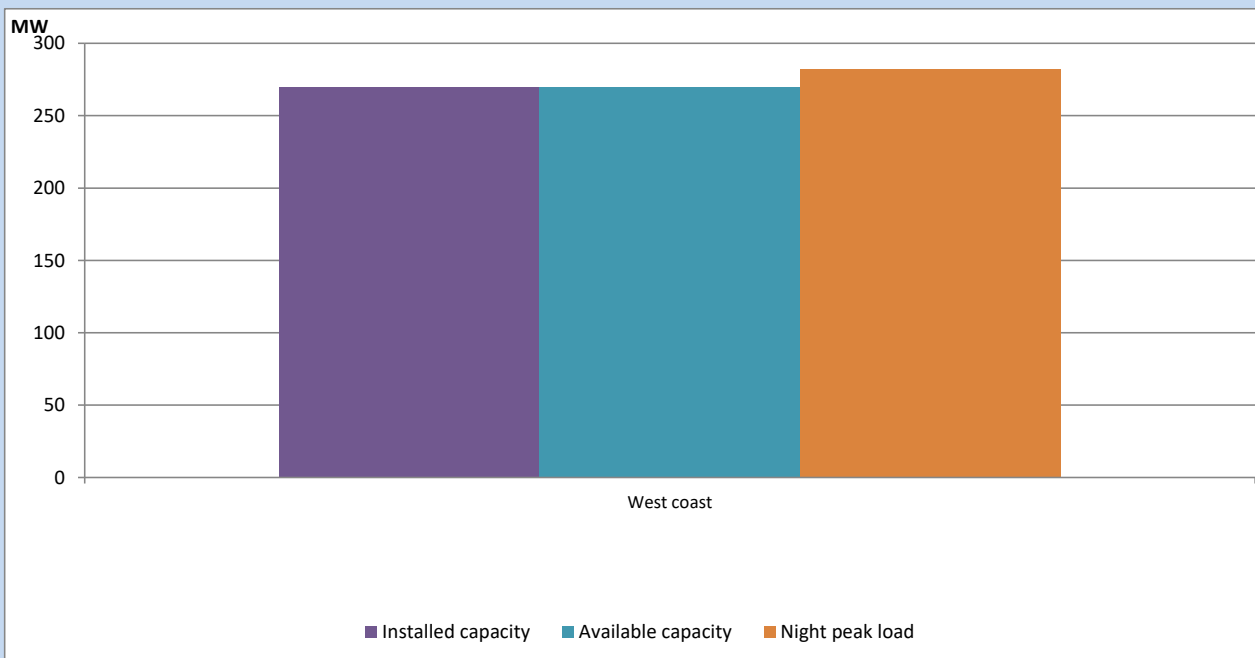
June 19, 2023



Available Generation is estimated based on plant availability at 6.00am on

June 20, 2023

IPP owned Thermal Plant Loading at the Night Peak

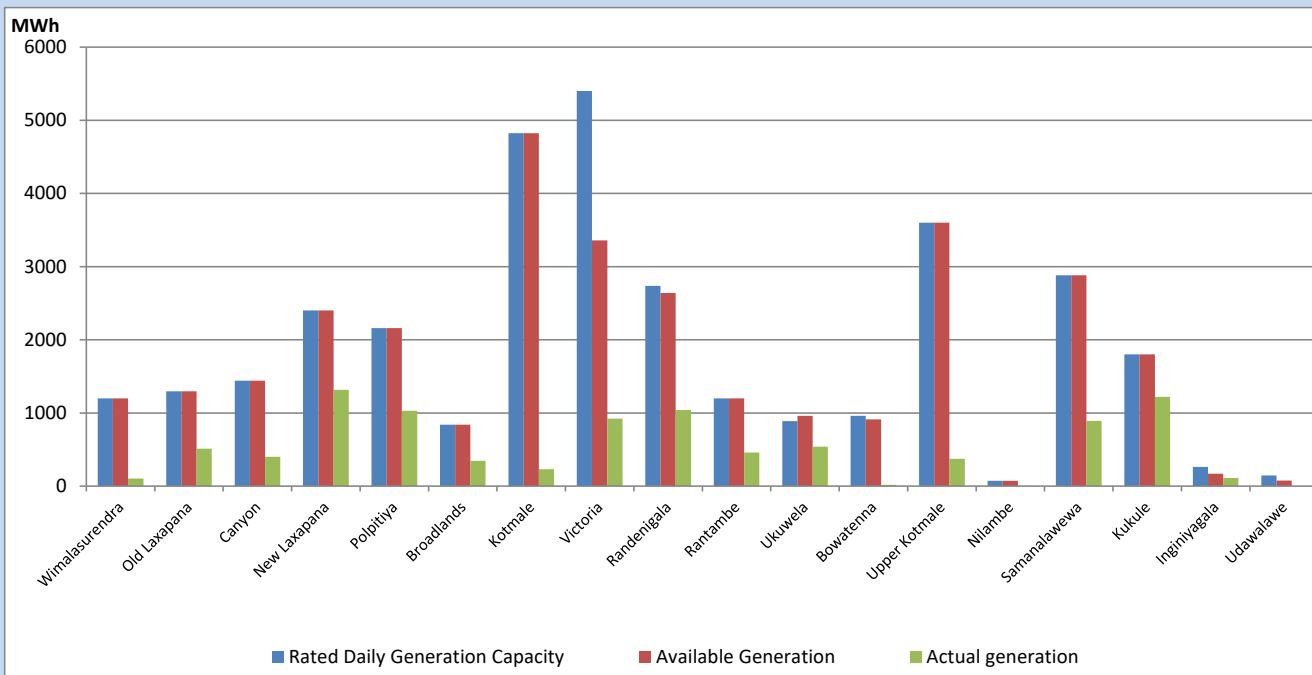


Note- Plant availability is recorded at 6.00 am on

June 20, 2023

Major Hydro Plant Dispatch

June 19, 2023

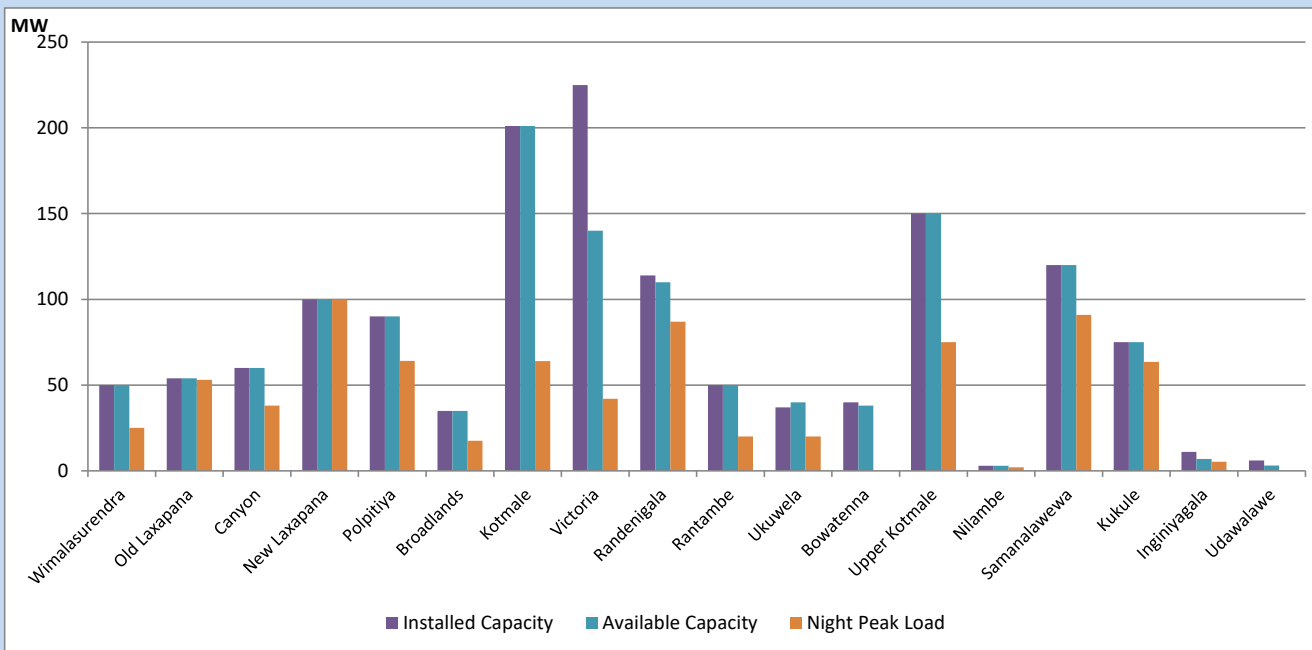


Available Generation is estimated based on plant availability at 6.00am on
Broadlands power plant is operating in the Commissioning Stage

June 20, 2023

Major Hydro Plant Loading at Night Peak

June 19, 2023



Note- Plant availability is recorded at 6.00 am on June 20, 2023

Broadlands power plant is operating in the Commissioning Stage

Summary of Major Plant performance

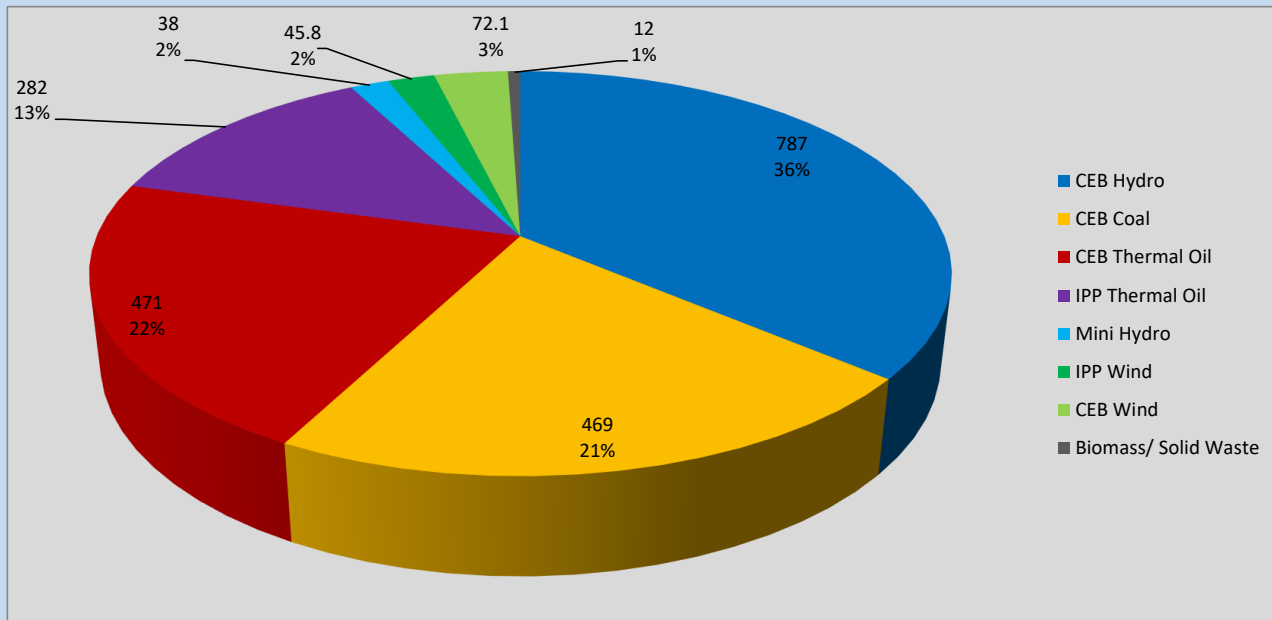
Plant	Installed Capacity	Plant Availability	Night peak Load	Plant Dispatch
	(MW)	(MW)	(MW)	(MWh)
Wimalasurendra	50	50	25	105
Old Laxapana	54	54	53	512
Canyon	60	60	38	402
New Laxapana	100	100	100	1,318
Polpitiya	90	90	64	1,031
Broadlands	35	35	18	346
Kotmale	201	201	64	230
Victoria	225	140	42	921
Randenigala	114	110	87	1,041
Rantambe	50	50	20	459
Ukuwela	37	40	20	540
Bowatenna	40	38	0	17
Upper Kotmale	150	150	75	374
Nilambe	3	3	2	4
Samanalawewa	120	120	91	891
Kukule	75	75	64	1,221
Inginiyagala	11	7	5	112
Udawalawe	6	3	0	0
Puttalam Coal I	270	0	0	0
Puttalam Coal II	270	270	268	6,450
Puttalam Coal III	270	188	201	4,852
KPS Small GTs	64	0	0	0
KPS GT 7	115	115	111	1,310
KCCP	161	158	150	3,494
Sapugaskanda A	70	34	34	703
Sapugaskanda B	70	63	63	1,445
Uthura Janani	26	24	23	444
Barge CEB	60	60	60	1,194
CEB-Hambantota	30	18	19	304
CEB-Mathugama	20	12	11	191
ACE Matara	24	0	0	0
Asia Power	50	0	0	0
KCCPS -2	163	155	0	0
West Coast	270	270	282	6,169
Nothern Power	36	0	0	0
ACE Embilipitiya	93	0	0	0
Total	3,483	2,693	2,157	40,357

Plant availability is the availability recorded at 6 am on

June 20, 2023

Contribution to the Night Peak in MW

June 19, 2023

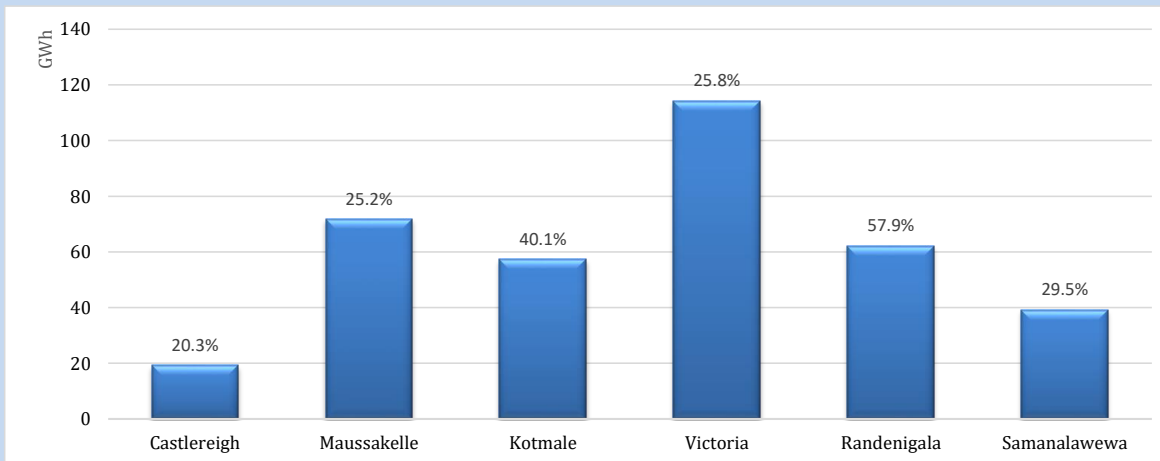


Night Peak*	2,176 MW
Day Peak Maximum Demand	1,915 MW
Day Peak Minimum Demand	1,741 MW
Off Peak Minimum Demand	1,134 MW

Above figures are excluding contribution from roof top solar, non telemetered solar and mini hydro plants

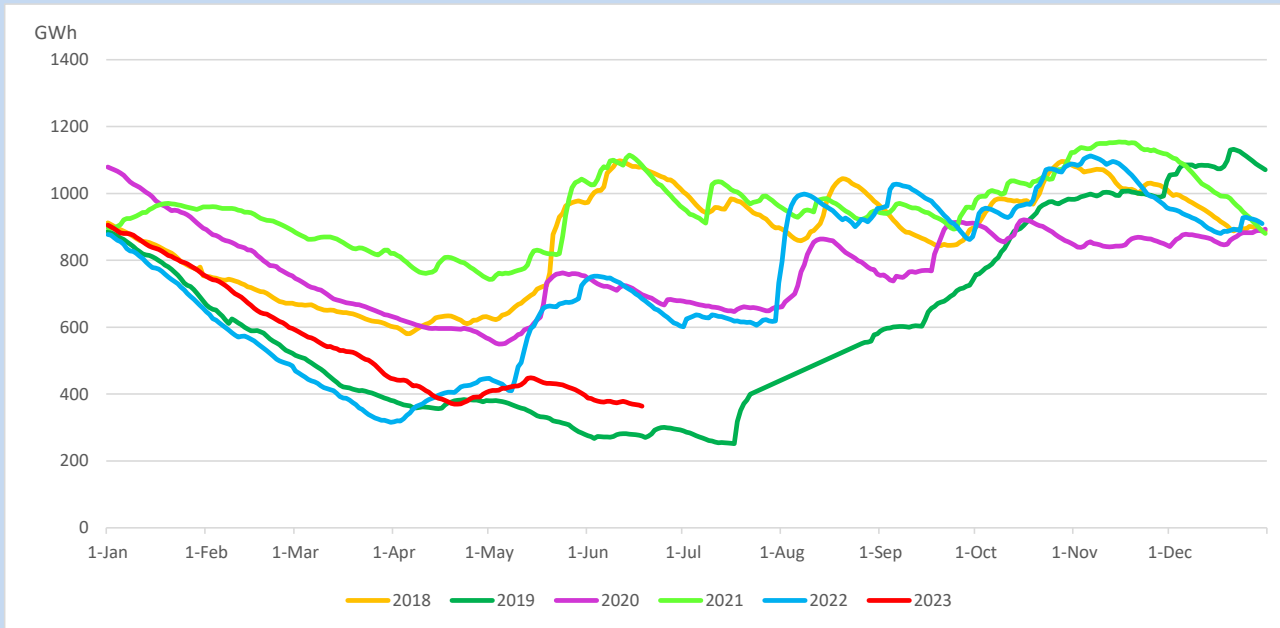
Reservoir Levels -

as at 06.00 Hr on June 20, 2023

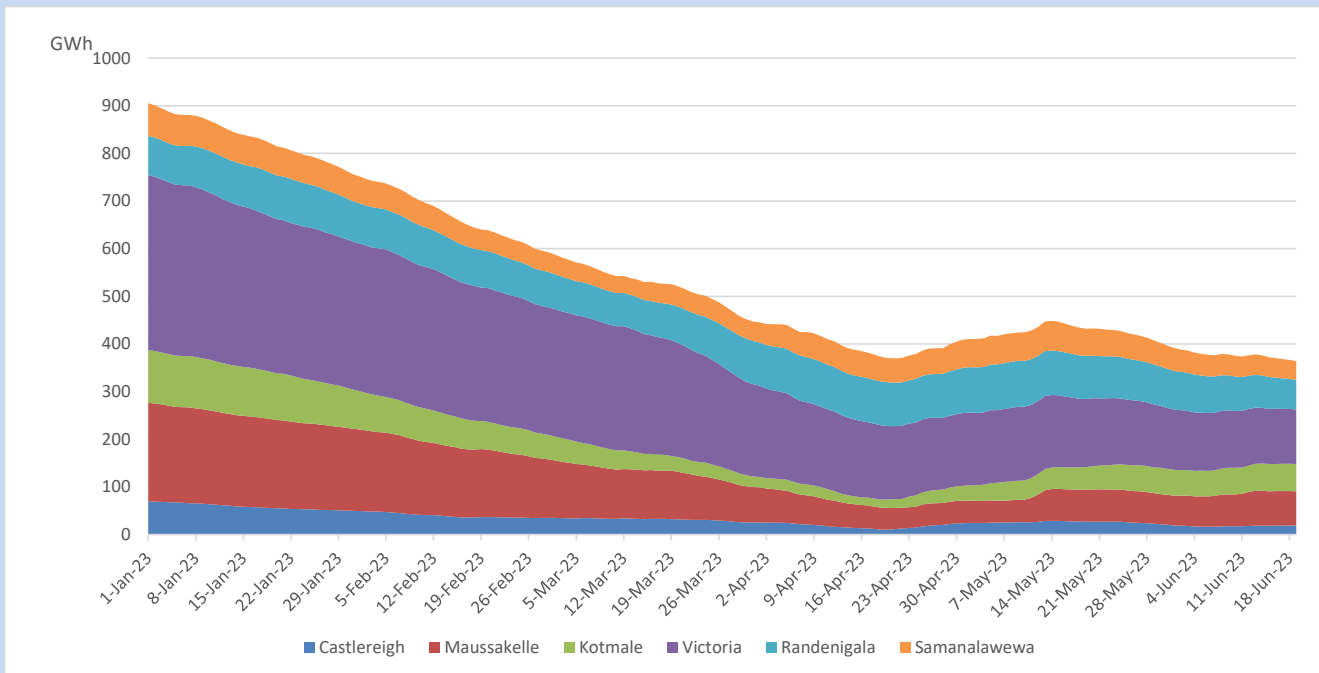


Total Reservoir Level	363.9 GWh
% of Total capacity	30.2%

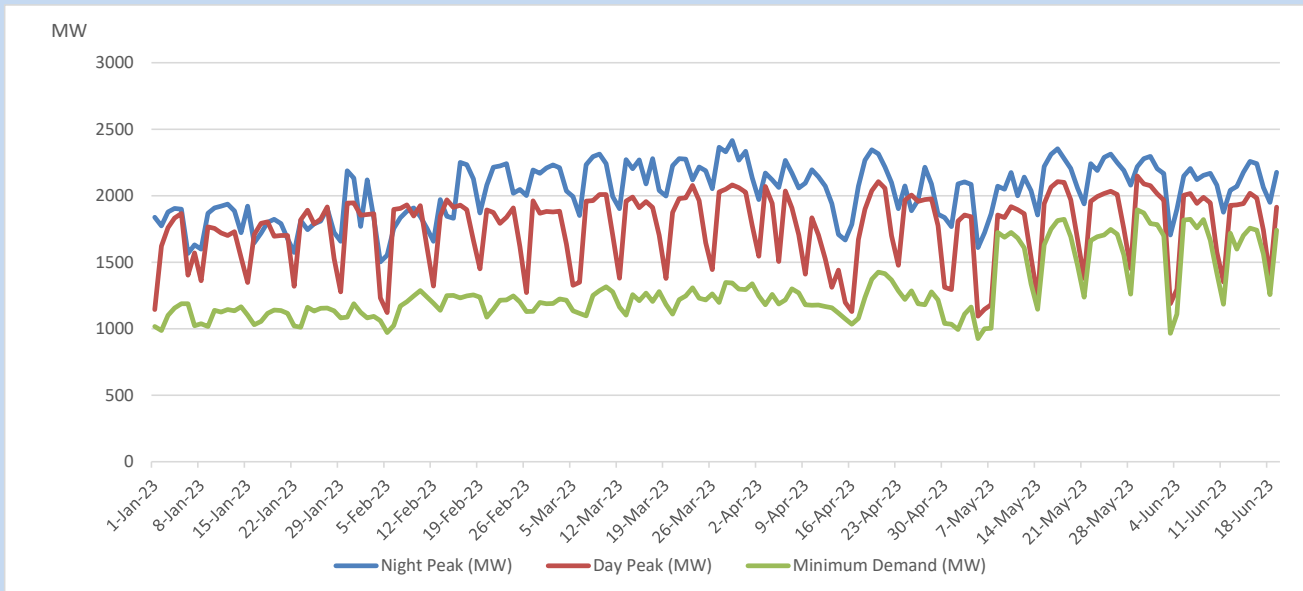
Comparison of Total Reservoir Storage Levels with Past Years



Variation of Major Hydro Reservoir Levels in the current year (GWh)



Variation of Demand during the current year

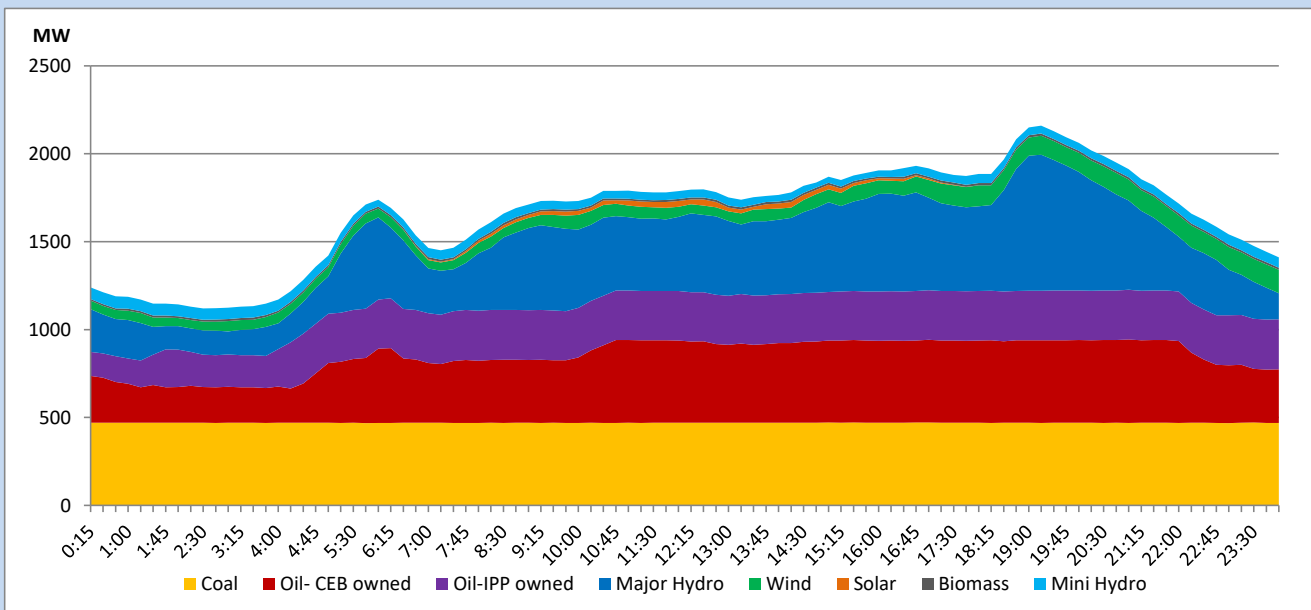


The above figures are excluding contribution from roof top solar, non telemetered solar and mini hydro plants

Daily Load Curve

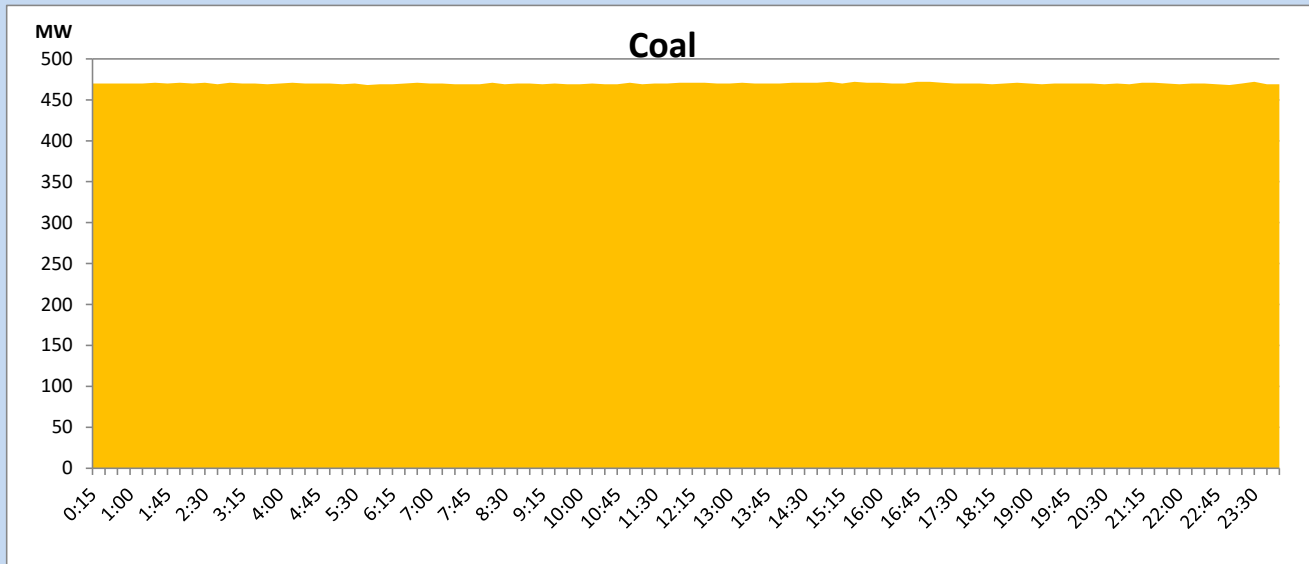
June 19, 2023

Solar and wind data is based on Telemetered Power Stations only



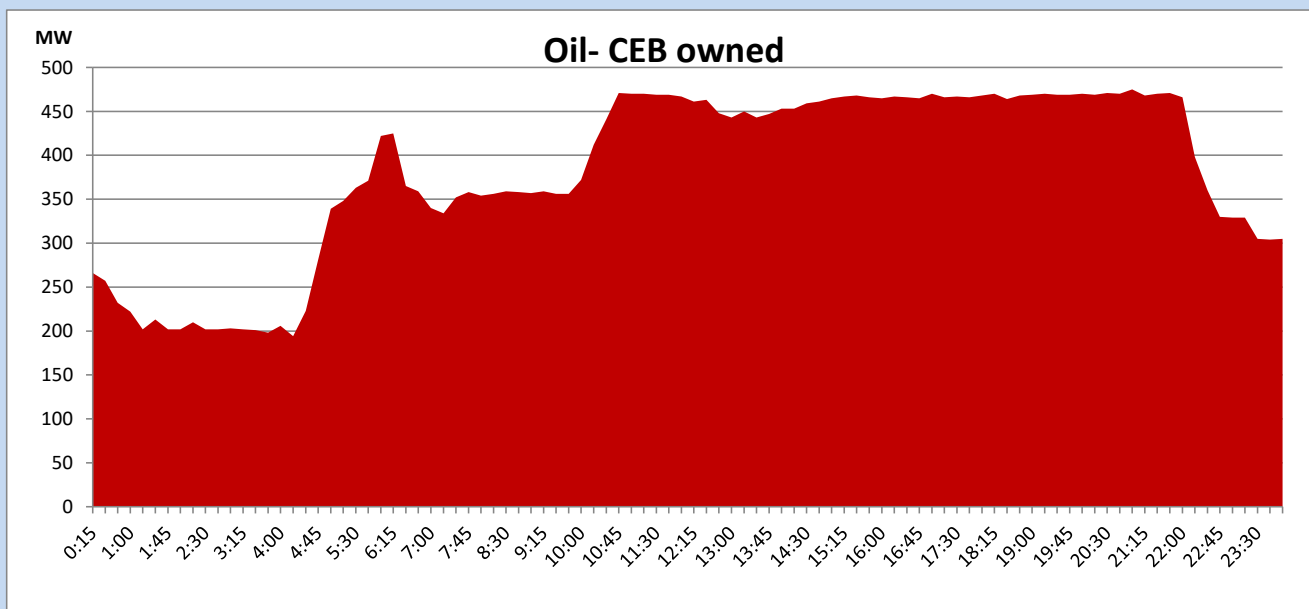
Coal Generation during

June 19, 2023



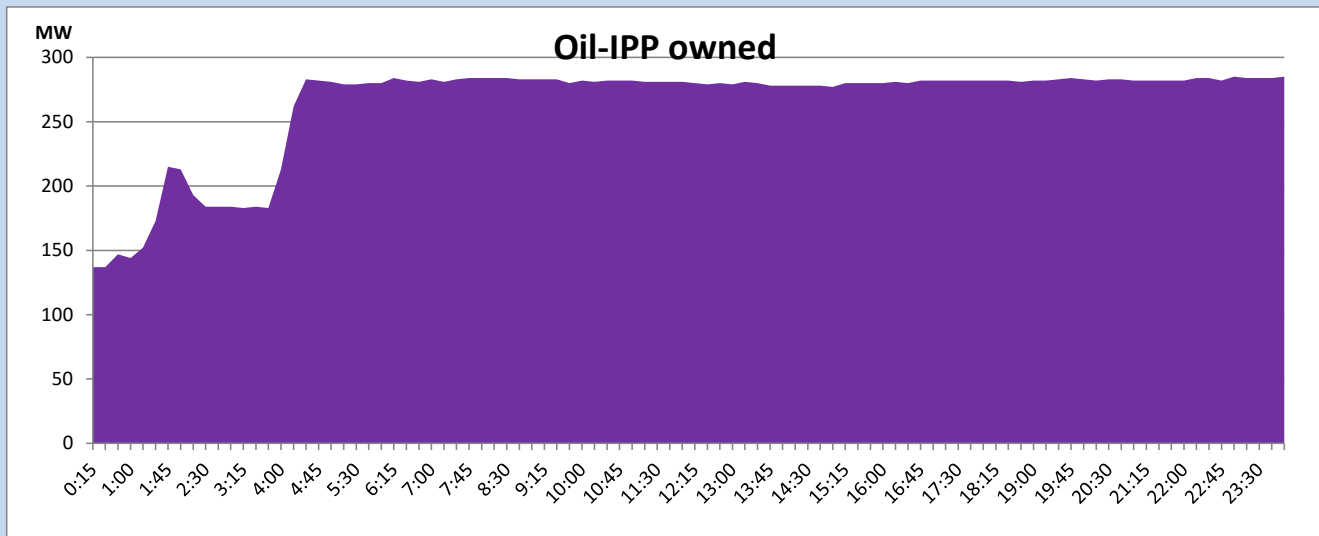
CEB Oil Plant Generation during

June 19, 2023



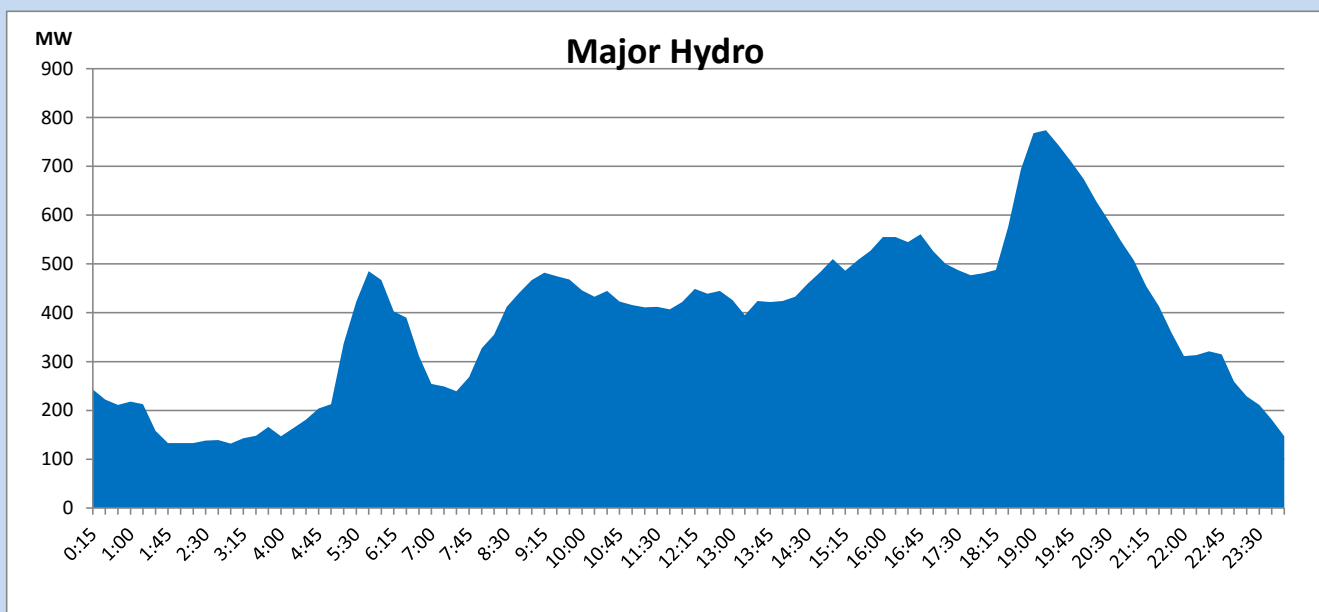
IPP Oil Plant Generation during

June 19, 2023



Major Hydro Generation during

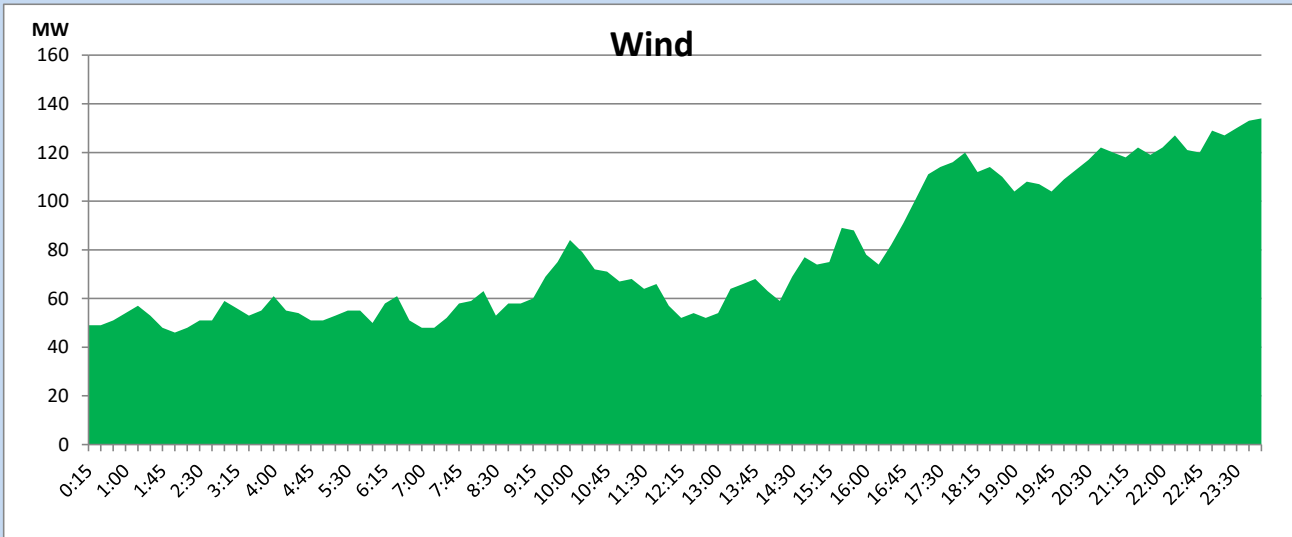
June 19, 2023



Wind Generation during

June 19, 2023

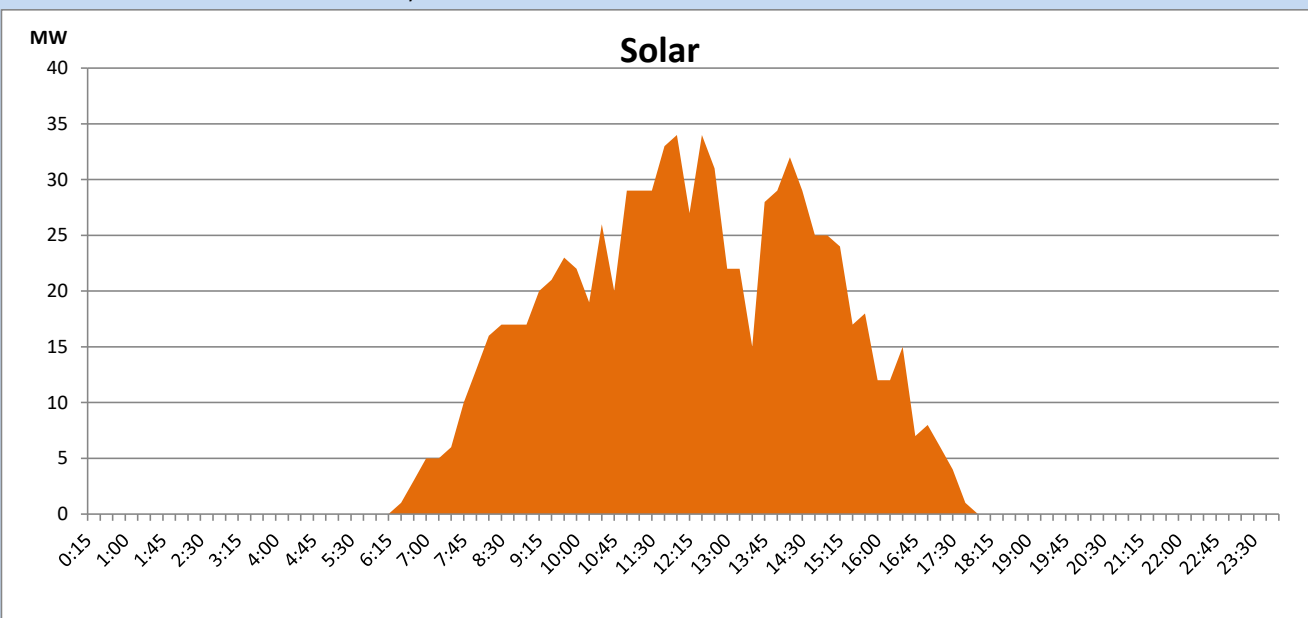
Based on Telemetered Power Stations only



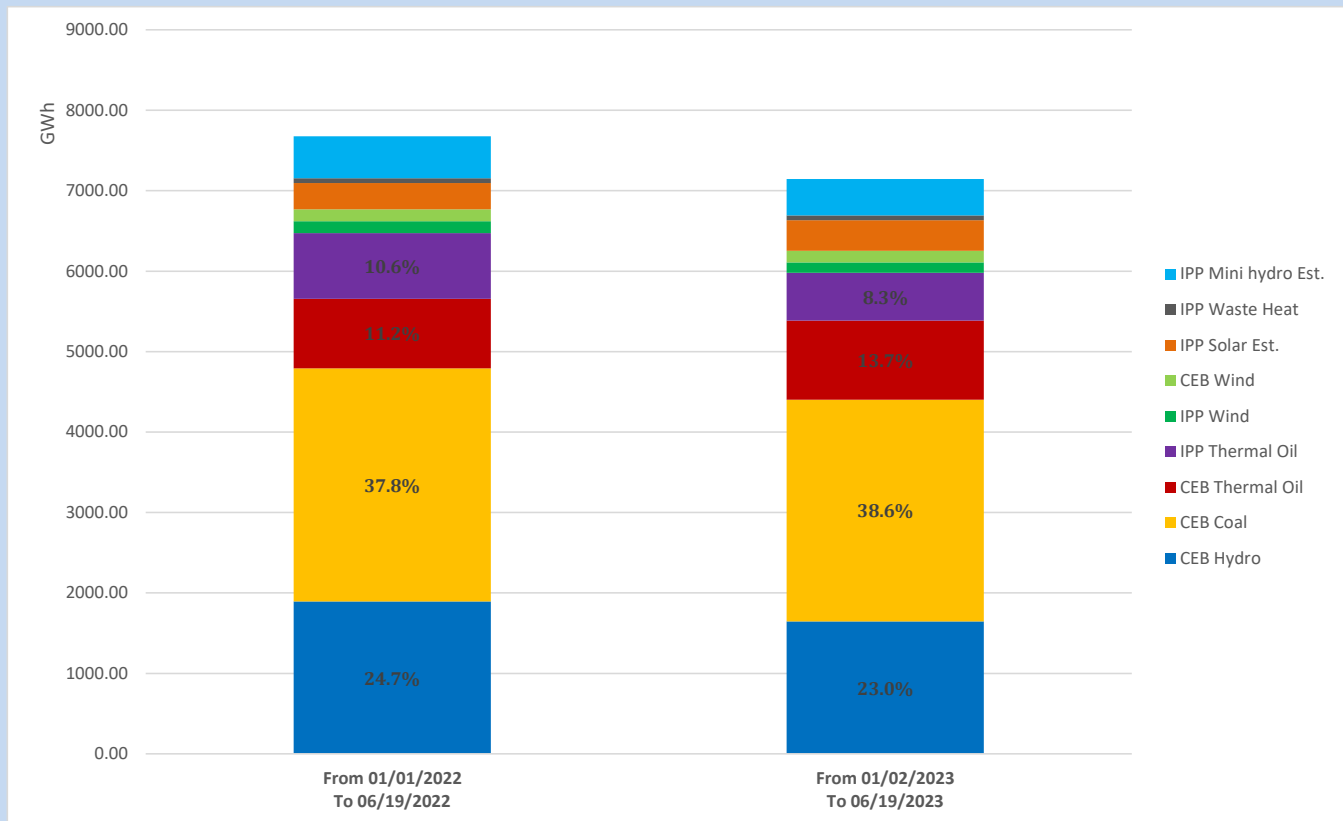
Solar Generation during

June 19, 2023

Based on Telemetered Power Stations only



Cumulative Dispatch Comparison with Last Year



The above figures are including contribution from roof top solar, non telemetered solar and mini hydro plants

Thermal Plant Fuel types

Power Station	Primary Fuel
CEB Thermal	
Sapugaskanda 1	Heavy Fuel
Sapugaskanda 2	Heavy Fuel
Kelanitissa Small Gas Turbines	Auto Diesel
GT 7 - Kelanitissa	Auto Diesel
Kelanitissa CCY	Naphtha or Diesel
Lakvijaya 1	Coal
Lakvijaya 2	Coal
Lakvijaya 3	Coal
Uthuru Janani	Heavy Fuel
Barge CEB	Heavy Fuel
KCCPS -2	Auto Diesel

Power Station	Primary Fuel
Private Thermal	
West Coast	Auto Diesel / Heavy Fuel

Major Incidents reported during the day

June 19, 2023

- 1) KPS GT 07 performed a forced shutdown at 6:43hrs due to a diesel leak. The unit resumed generation at 10:01hrs and reached full load at 10:45hrs.