

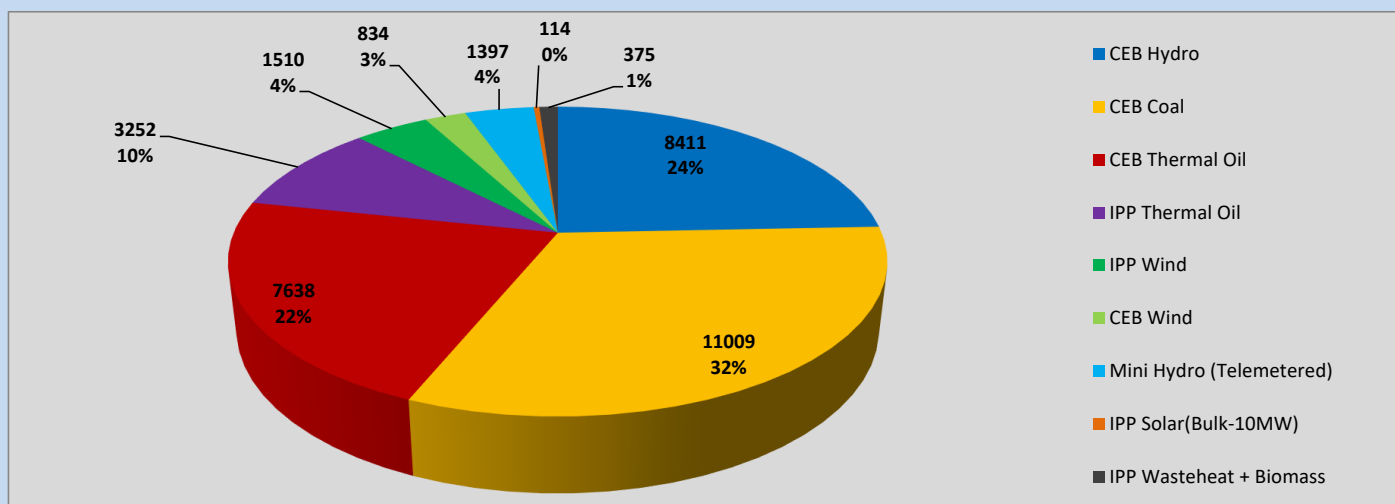
# Generation and Reservoirs Statistics

June 18, 2023



PUBLIC UTILITIES COMMISSION OF SRI LANKA

## Daily Generation Mix in MWh



Total Generation (Excluding estimated figures) =

34,540 MWh

### Estimated figures of CEB generation report

Estimated unserved energy = 0.00 GWh

Estimated Mini Hydro (Non telemetered) = 2683 MWh

Estimated IPP Solar PV (Bulk 1-10MW) = 304 MWh

Estimated Solar Roof Top PV = 1890 MWh

## Cumulative Dispatch

Following data excludes the contribution from roof top solar, non telemetered solar and mini hydro plants

### For Current Month

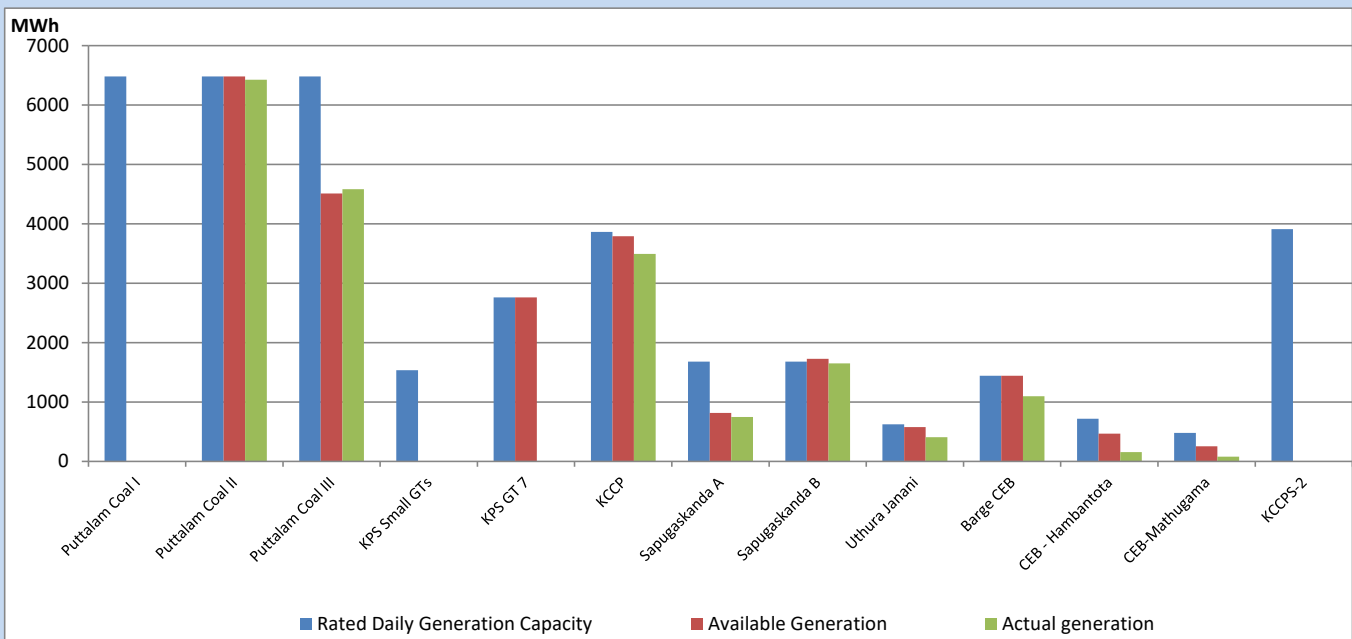
Category	Dispatch (GWh)	
CEB Hydro	158	22.12%
CEB Coal	253	35.37%
CEB Thermal Oil	127	17.73%
IPP Thermal	70	9.83%
SPP Wind	36	5.05%
CEB Wind	31	4.39%
Mini Hydro (Telemetered)	26	3.60%
IPP Solar(Bulk-10MW)	6	0.85%
IPP Wasteheat + BMP	8	1.06%
<b>Total</b>	<b>716</b>	

### For Current Year

Category	Dispatch (GWh)	
CEB Hydro	1,639	25.32%
CEB Coal	2,748	42.45%
CEB Thermal Oil	974	15.05%
IPP Thermal	587	9.07%
SPP Wind	127	1.96%
CEB Wind	143	2.20%
Mini Hydro (Telemetered)	152	2.34%
IPP Solar(Bulk-10MW)	49	0.76%
IPP Wasteheat	55	0.84%
<b>Total</b>	<b>6,474</b>	

## CEB owned Thermal Plant Dispatch

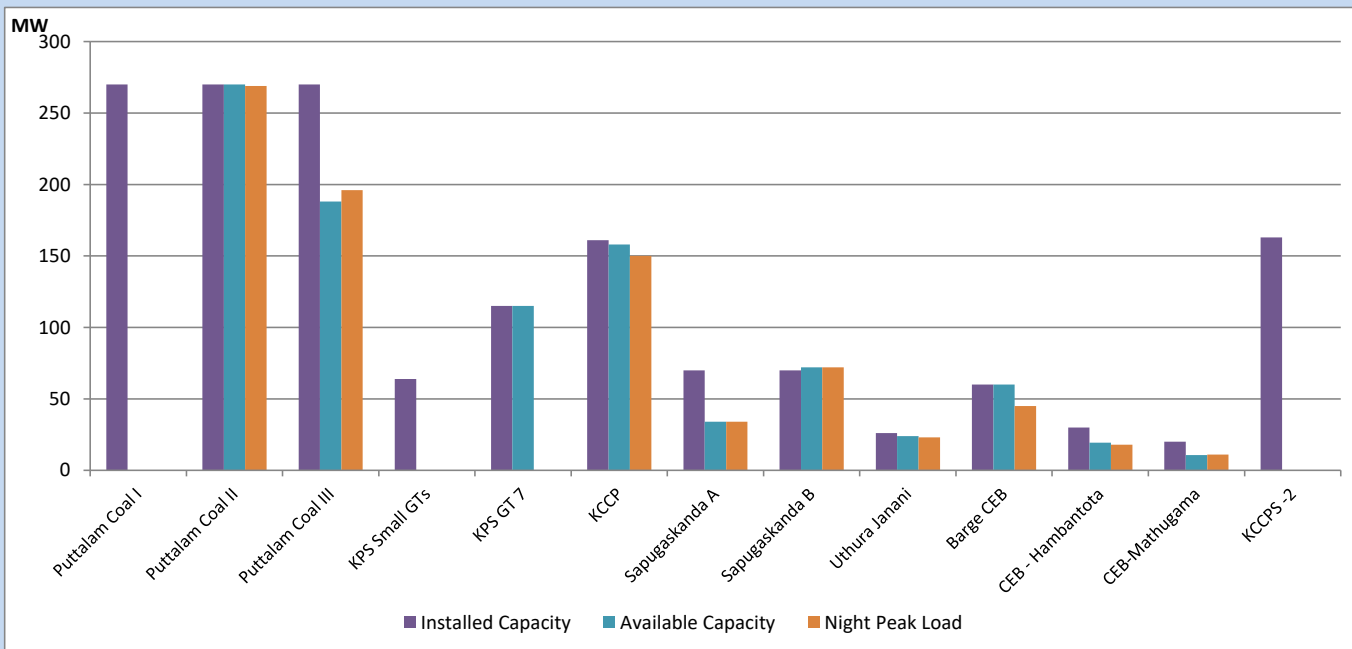
June 18, 2023



Available Generation is estimated based on plant availability at 6.00am on

June 19, 2023

## CEB owned Thermal Plant Loading at the Night Peak



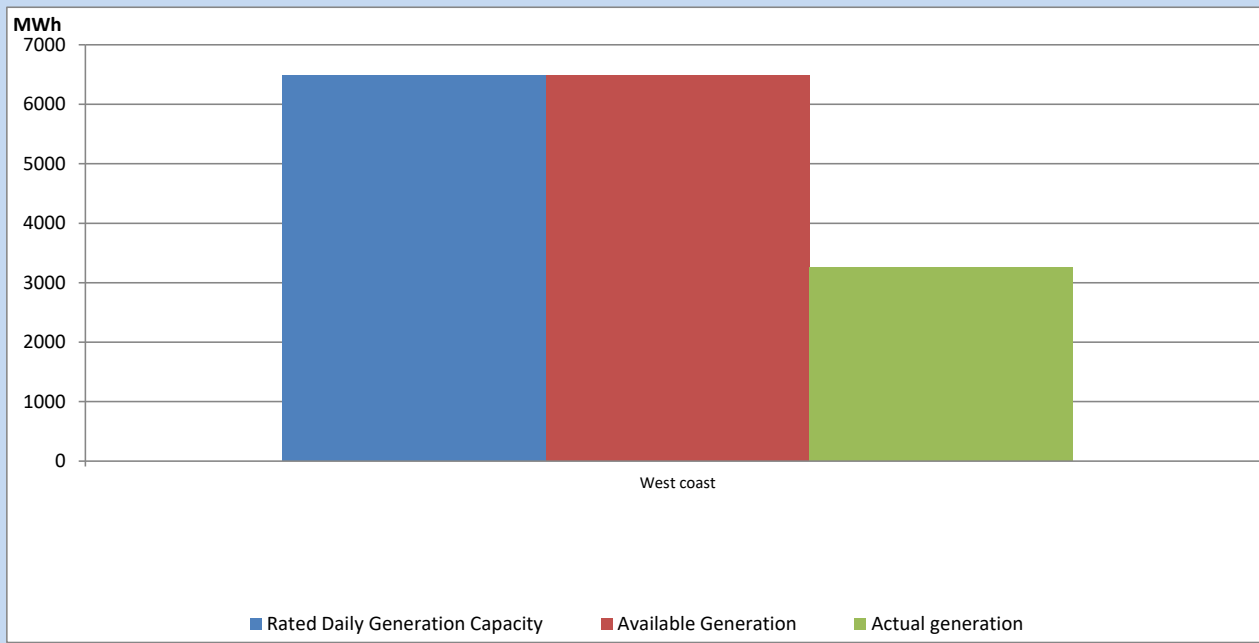
Note-

Plant availability is recorded at 6.00 am on

June 19, 2023

## IPP owned Thermal Plant Dispatch

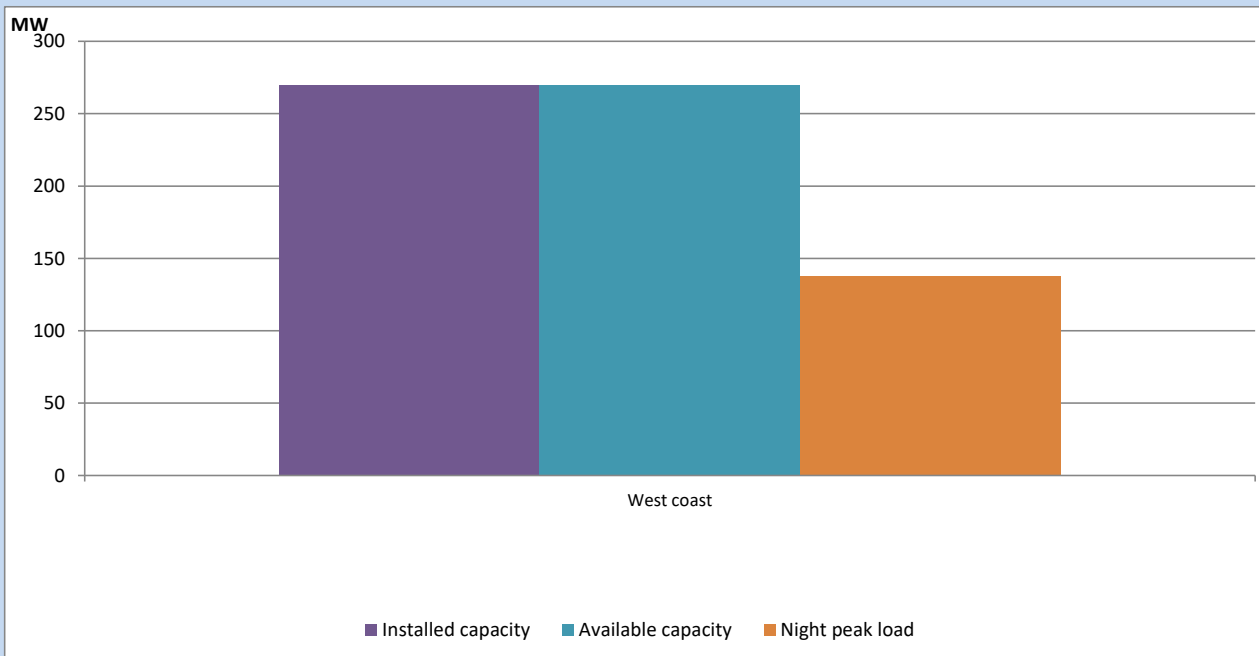
June 18, 2023



Available Generation is estimated based on plant availability at 6.00am on

June 19, 2023

## IPP owned Thermal Plant Loading at the Night Peak

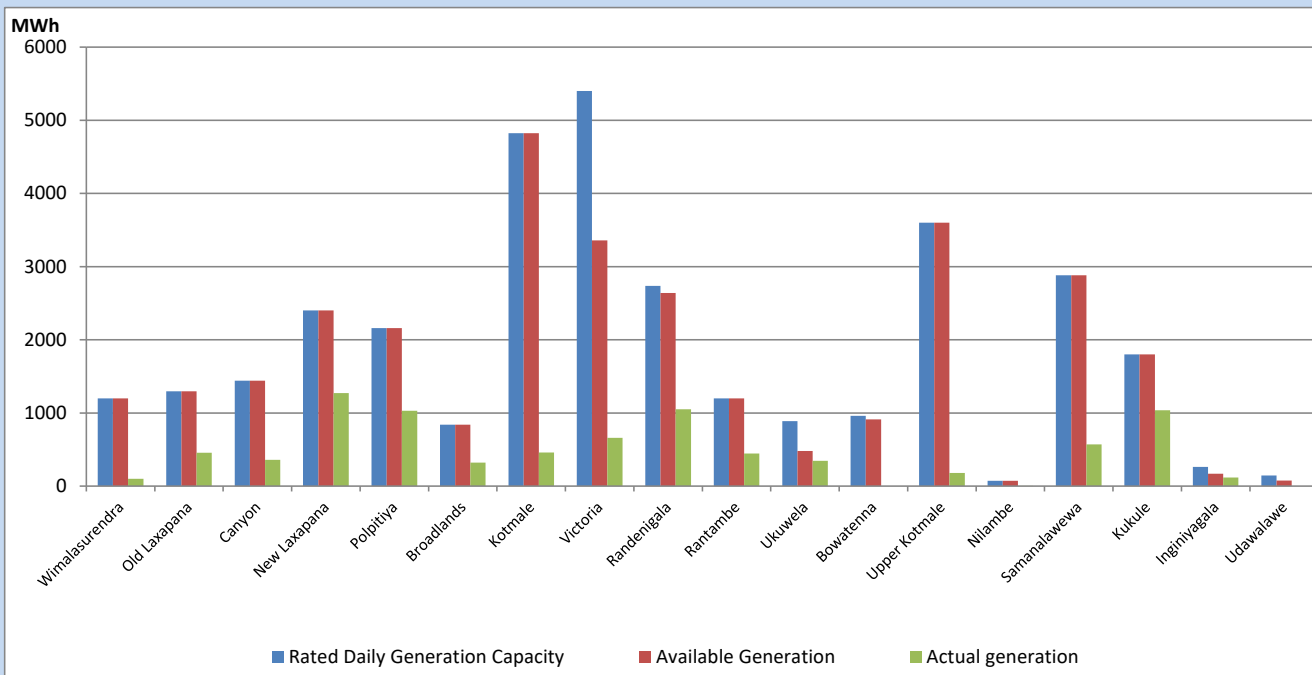


Note- Plant availability is recorded at 6.00 am on

June 19, 2023

## Major Hydro Plant Dispatch

June 18, 2023

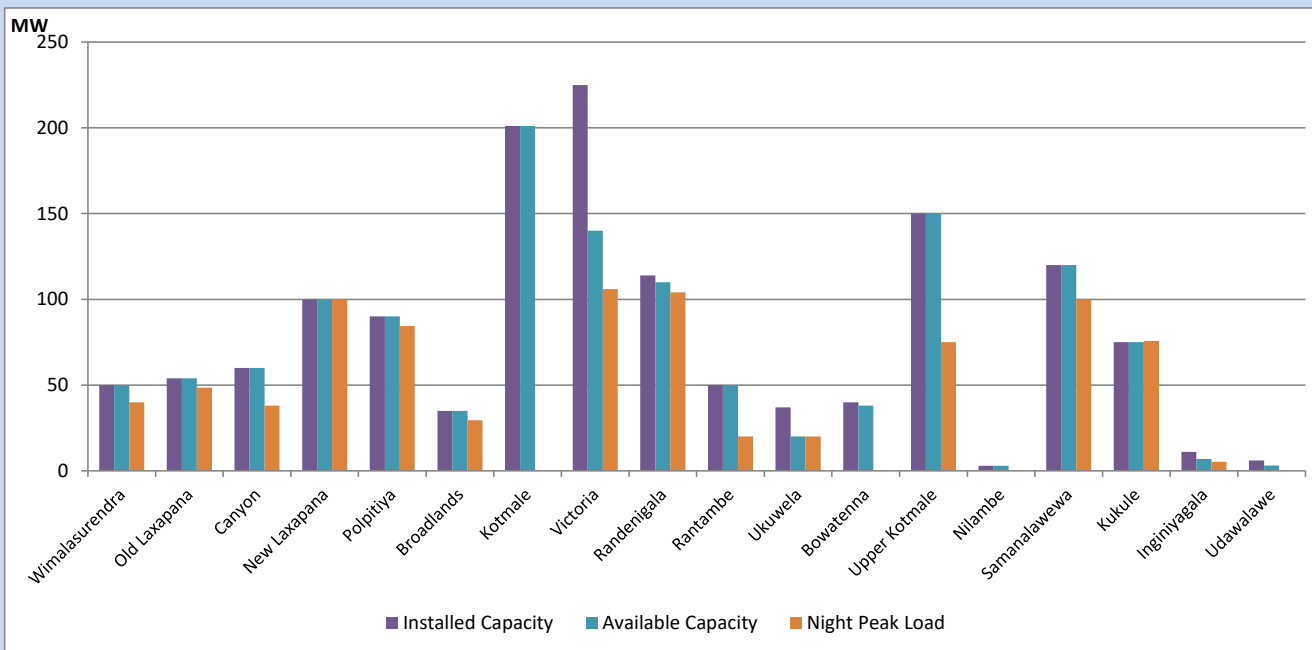


Available Generation is estimated based on plant availability at 6.00am on  
Broadlands power plant is operating in the Commissioning Stage

June 19, 2023

## Major Hydro Plant Loading at Night Peak

June 18, 2023



Note- Plant availability is recorded at 6.00 am on  
Broadlands power plant is operating in the Commissioning Stage

June 19, 2023

## Summary of Major Plant performance

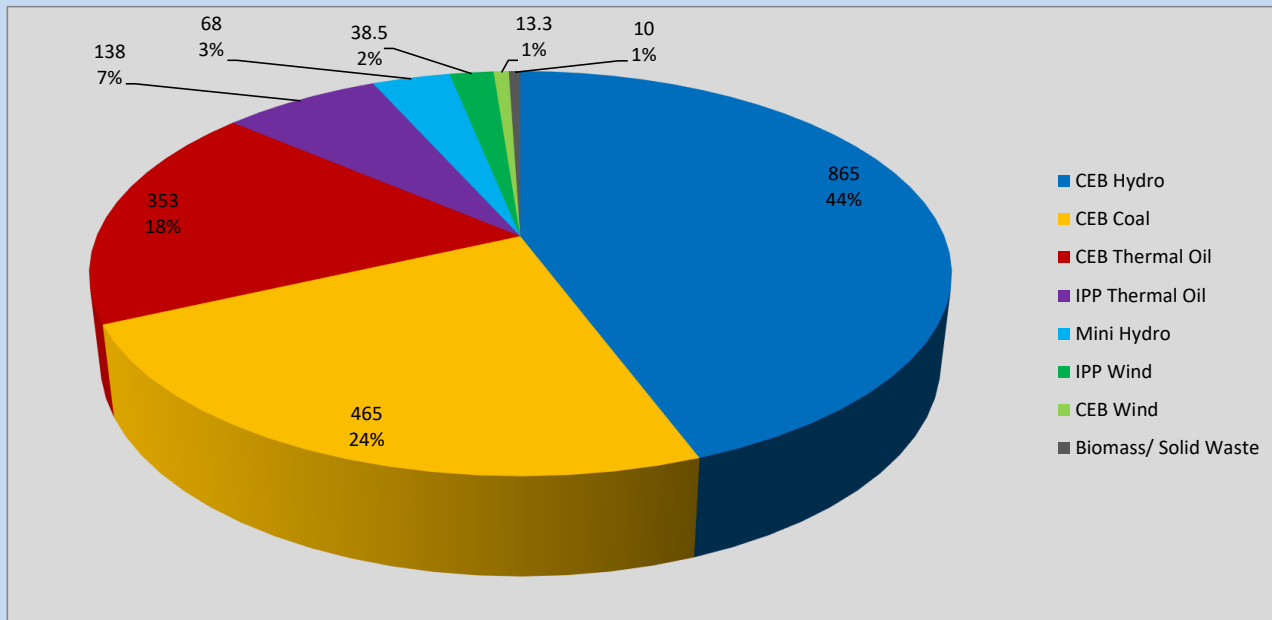
Plant	Installed Capacity	Plant Availability	Night peak Load	Plant Dispatch
	(MW)	(MW)	(MW)	(MWh)
Wimalasurendra	50	50	40	101
Old Laxapana	54	54	49	457
Canyon	60	60	38	359
New Laxapana	100	100	100	1,271
Polpitiya	90	90	85	1,028
Broadlands	35	35	30	322
Kotmale	201	201	0	460
Victoria	225	140	106	660
Randenigala	114	110	104	1,049
Rantambe	50	50	20	446
Ukuwela	37	20	20	347
Bowatenna	40	38	0	0
Upper Kotmale	150	150	75	180
Nilambe	3	3	0	3
Samanalawewa	120	120	100	571
Kukule	75	75	76	1,038
Inginiyagala	11	7	5	119
Udawalawe	6	3	0	0
Puttalam Coal I	270	0	0	0
Puttalam Coal II	270	270	269	6,424
Puttalam Coal III	270	188	196	4,585
KPS Small GTs	64	0	0	0
KPS GT 7	115	115	0	0
KCCP	161	158	150	3,495
Sapugaskanda A	70	34	34	747
Sapugaskanda B	70	72	72	1,651
Uthura Janani	26	24	23	408
Barge CEB	60	60	45	1,099
CEB-Hambantota	30	19	18	157
CEB-Mathugama	20	11	11	81
ACE Matara	24	0	0	0
Asia Power	50	0	0	0
KCCPS -2	163	0	0	0
West Coast	270	270	138	3,252
Nothern Power	36	0	0	0
ACE Embilipitiya	93	0	0	0
<b>Total</b>	<b>3,483</b>	<b>2,527</b>	<b>1,933</b>	<b>34,540</b>

Plant availability is the availability recorded at 6 am on

June 19, 2023

## Contribution to the Night Peak in MW

June 18, 2023

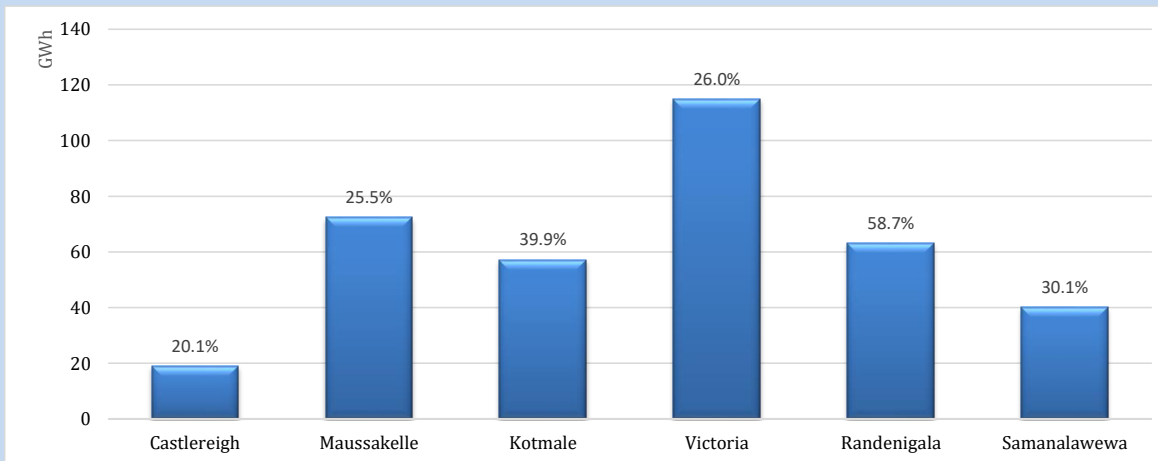


Night Peak*	1,951 MW
Day Peak Maximum Demand	1,386 MW
Day Peak Minimum Demand	1,257 MW
Off Peak Minimum Demand	1,214 MW

Above figures are excluding contribution from roof top solar, non telemetered solar and mini hydro plants

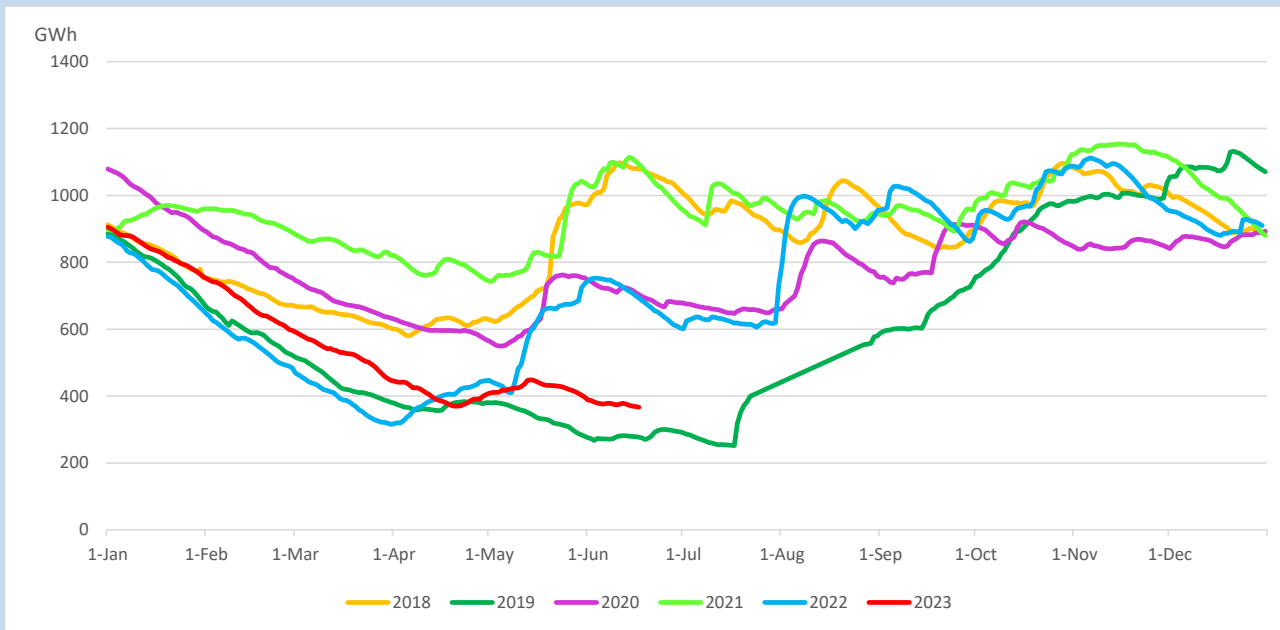
## Reservoir Levels -

as at 06.00 Hr on June 19, 2023

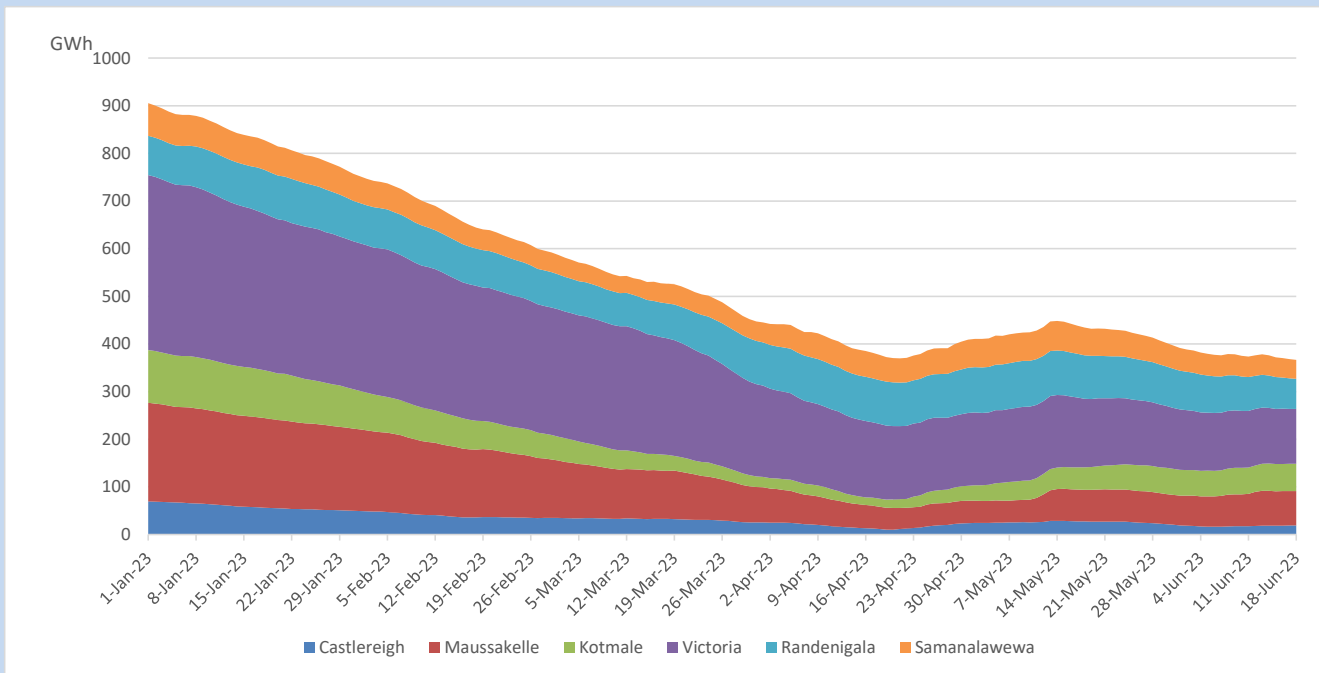


Total Reservoir Level	366.8 GWh
% of Total capacity	30.4%

## Comparison of Total Reservoir Storage Levels with Past Years

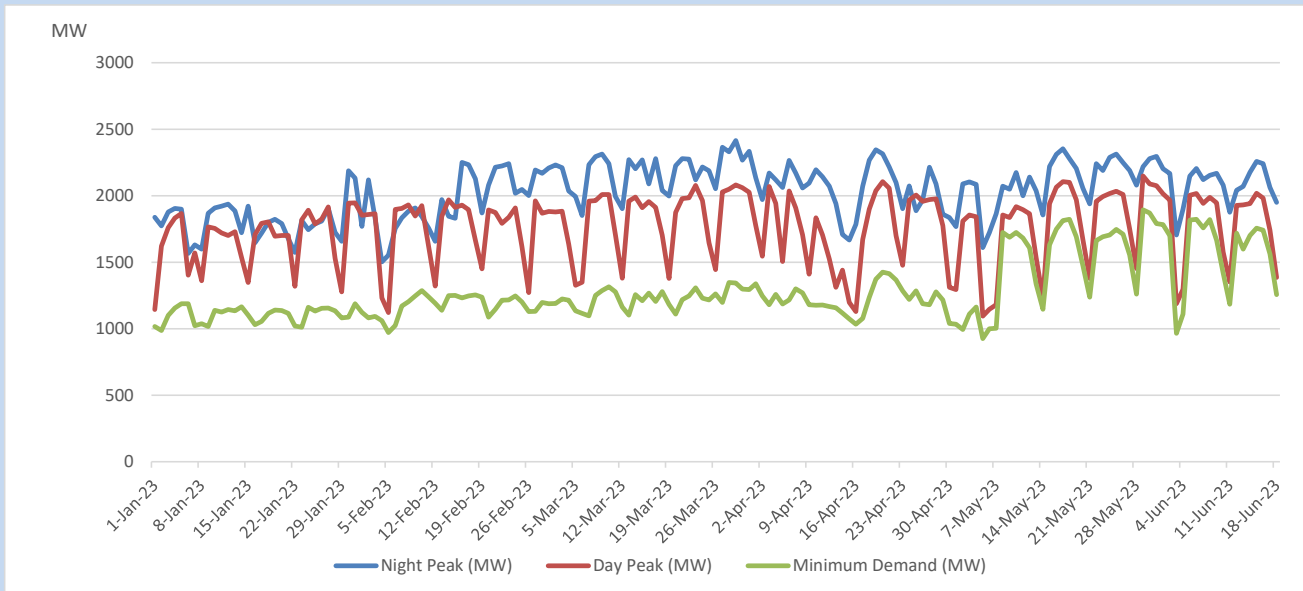


## Variation of Major Hydro Reservoir Levels in the current year (GWh)





## Variation of Demand during the current year

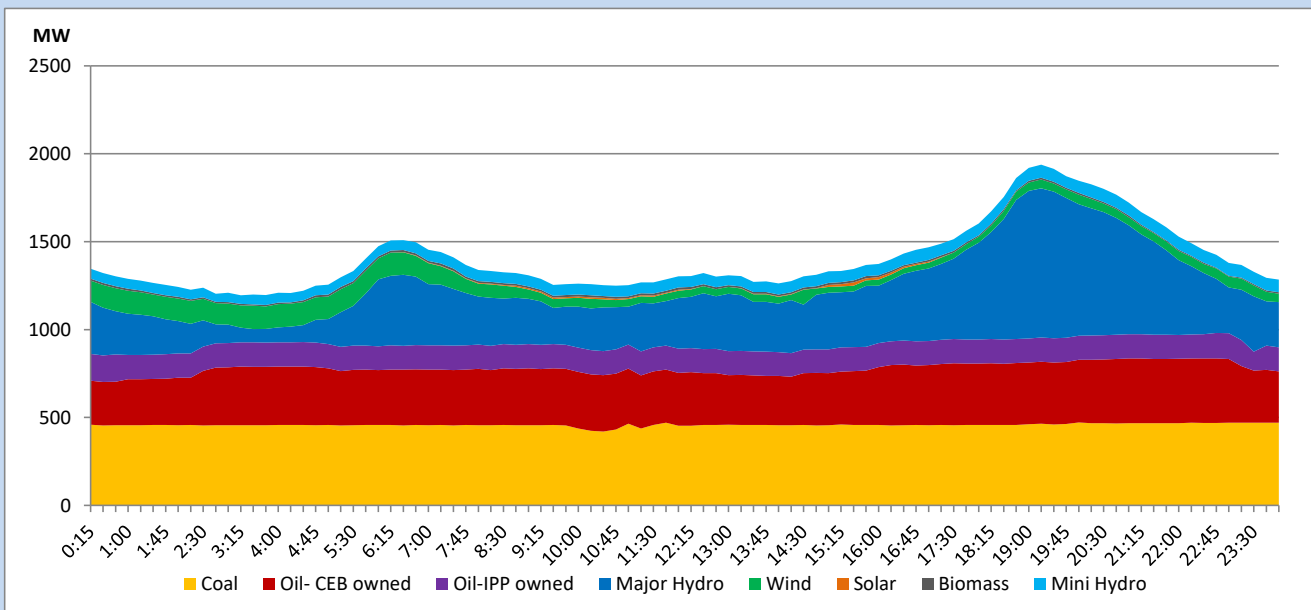


The above figures are excluding contribution from roof top solar, non telemetered solar and mini hydro plants

## Daily Load Curve

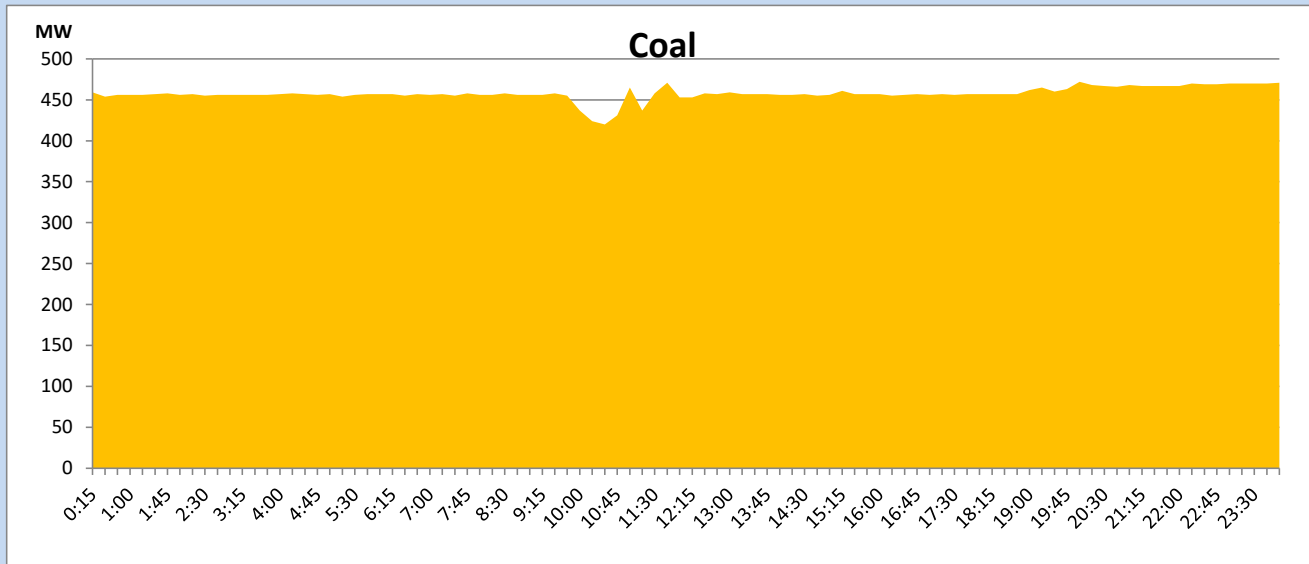
June 18, 2023

Solar and wind data is based on Telemetered Power Stations only



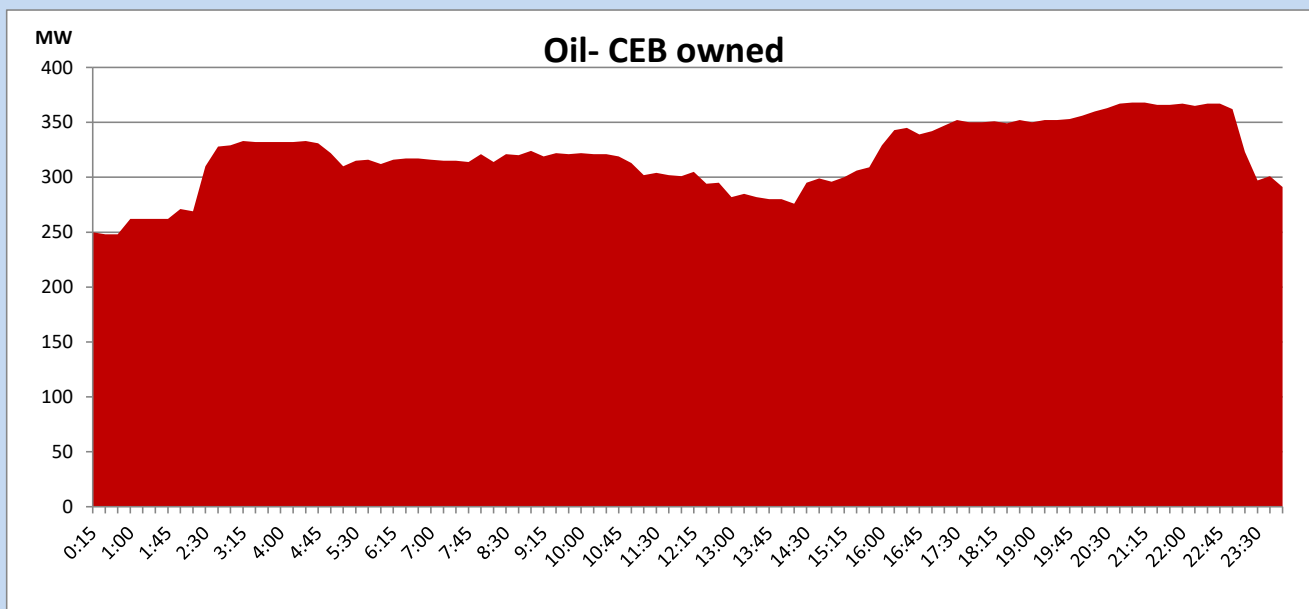
## Coal Generation during

June 18, 2023



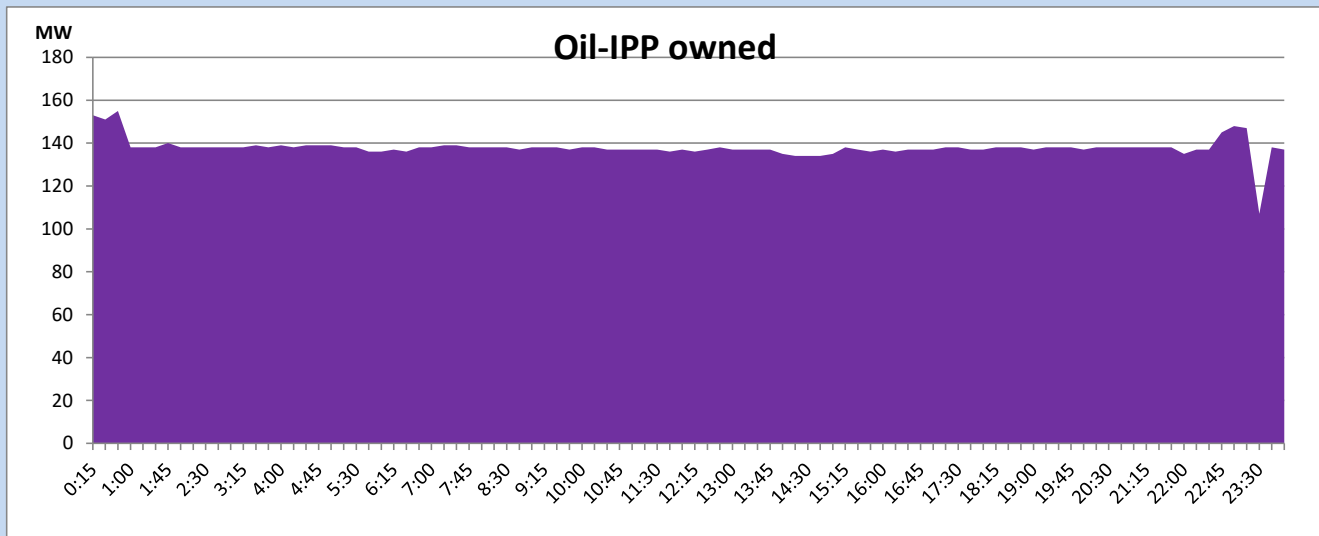
## CEB Oil Plant Generation during

June 18, 2023



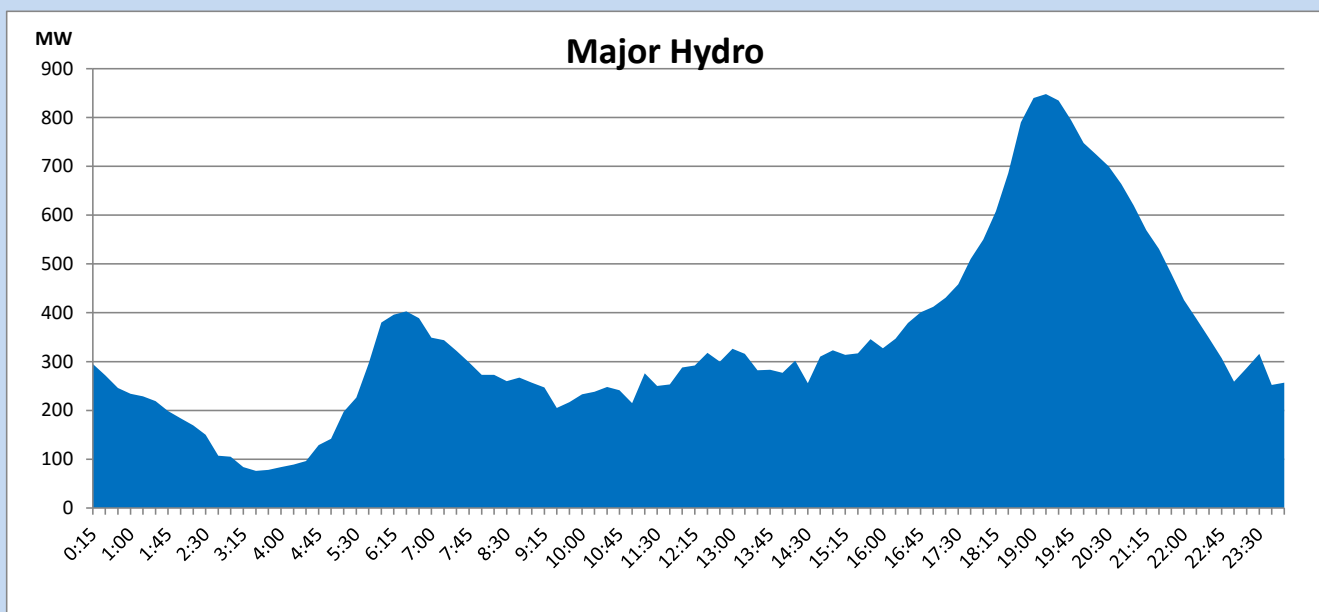
## IPP Oil Plant Generation during

June 18, 2023



## Major Hydro Generation during

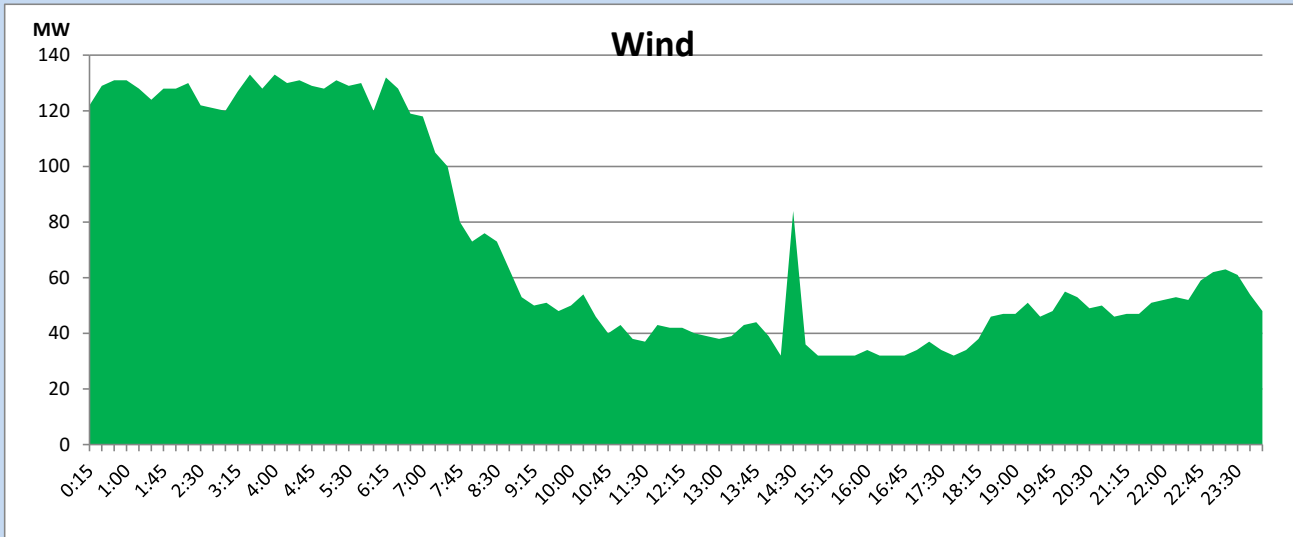
June 18, 2023



## Wind Generation during

June 18, 2023

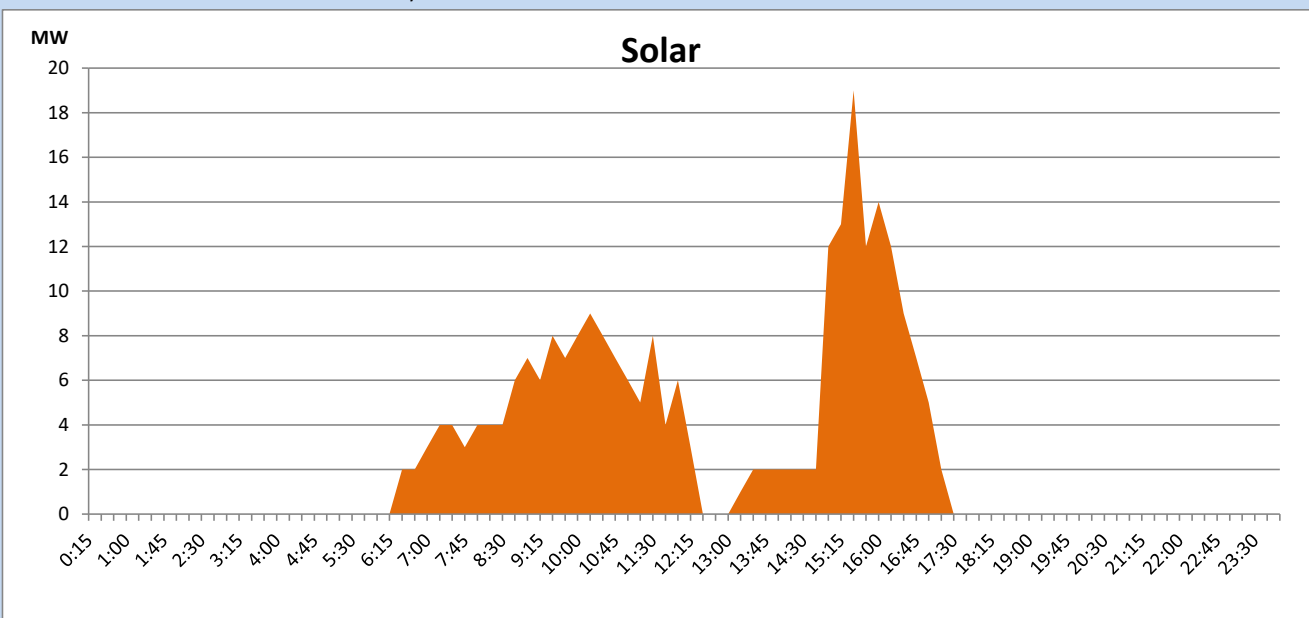
Based on Telemetered Power Stations only



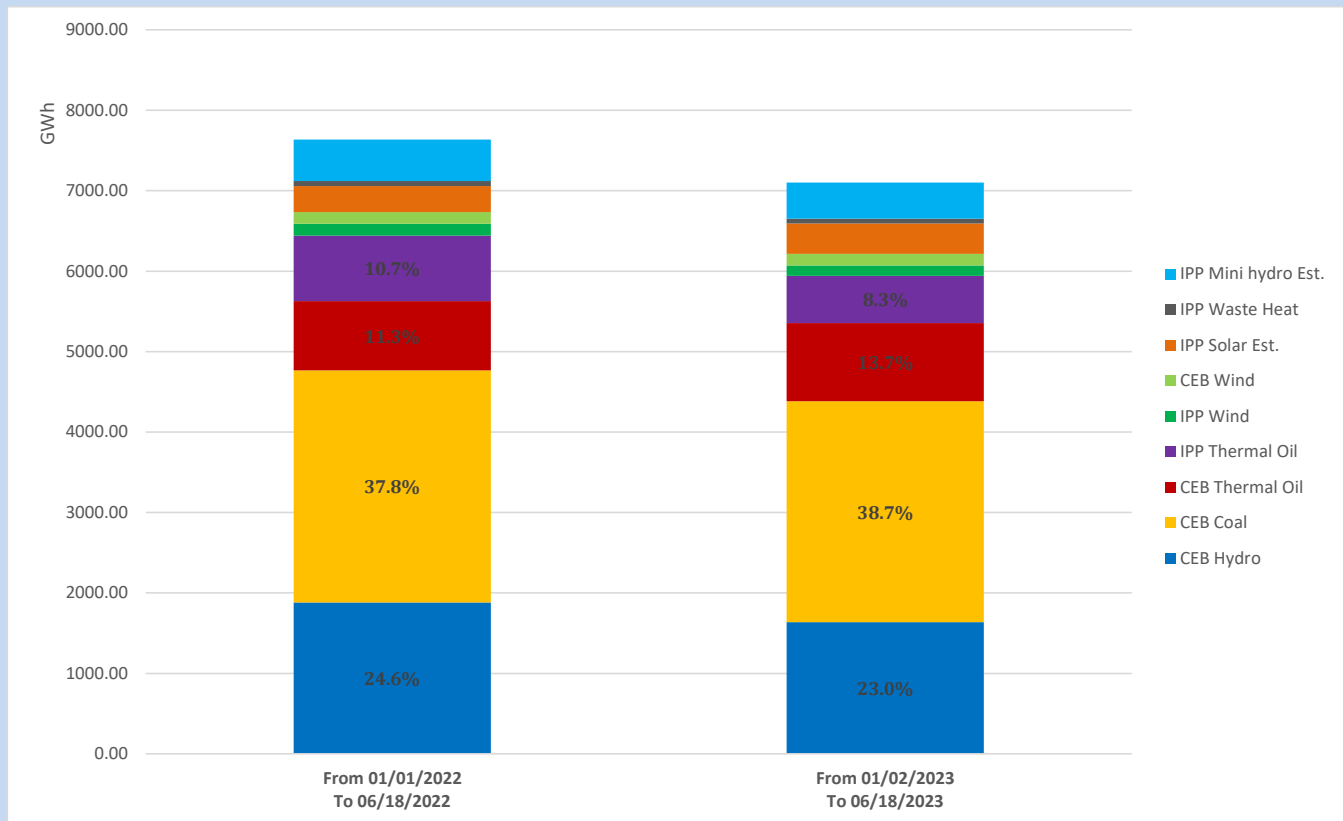
## Solar Generation during

June 18, 2023

Based on Telemetered Power Stations only



## Cumulative Dispatch Comparison with Last Year



The above figures are including contribution from roof top solar, non telemetered solar and mini hydro plants

## Thermal Plant Fuel types

Power Station	Primary Fuel
CEB Thermal	
Sapugaskanda 1	Heavy Fuel
Sapugaskanda 2	Heavy Fuel
Kelanitissa Small Gas Turbines	Auto Diesel
GT 7 - Kelanitissa	Auto Diesel
Kelanitissa CCY	Naphtha or Diesel
Lakvijaya 1	Coal
Lakvijaya 2	Coal
Lakvijaya 3	Coal
Uthuru Janani	Heavy Fuel
Barge CEB	Heavy Fuel
KCCPS -2	Auto Diesel

Power Station	Primary Fuel
Private Thermal	
West Coast	Auto Diesel / Heavy Fuel

## Major Incidents reported during the day

June 18, 2023

- 1). Vavaniya - Kilinochchi 132kV cct 01 and 02 tripped and A/R at 14:58hrs from both ends due to operation of Distance protection.
- 2). Vavaniya - N'Anuradhapura 132kV cct 01 and 02 tripped and A/R at 14:58hrs from both ends due to operation of Distance protection.
- 3). WCP GT 01 tripped at 23:26hrs while loading due to a steam bypass control valve issue.WCP GT 01 resumed generation at 00:32hrs (19.06.2023).