

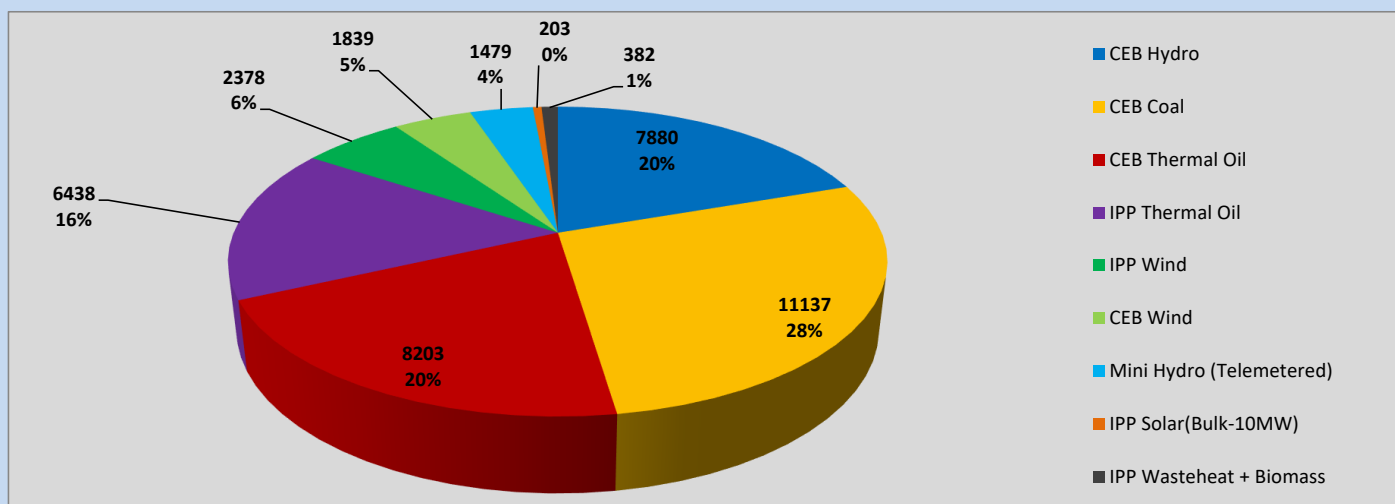
Generation and Reservoirs Statistics

June 17, 2023



PUBLIC UTILITIES COMMISSION OF SRI LANKA

Daily Generation Mix in MWh



Total Generation (Excluding estimated figures) =

39,939 MWh

Estimated figures of CEB generation report

Estimated unserved energy = 0.00 GWh

Estimated Mini Hydro (Non telemetered) = 2601 MWh

Estimated IPP Solar PV (Bulk 1-10MW) = 304 MWh

Estimated Solar Roof Top PV = 1890 MWh

Cumulative Dispatch

Following data excludes the contribution from roof top solar, non telemetered solar and mini hydro plants

For Current Month

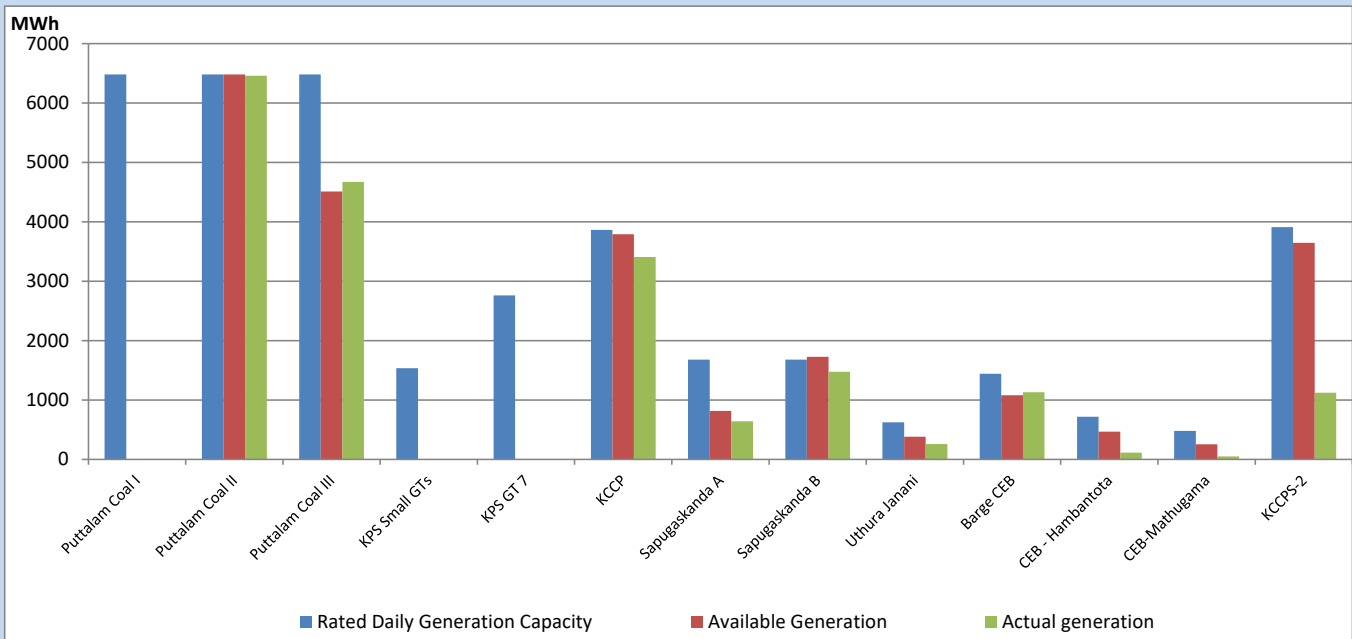
| Category | Dispatch (GWh) | |
|--------------------------|----------------|--------|
| CEB Hydro | 150 | 22.01% |
| CEB Coal | 242 | 35.55% |
| CEB Thermal Oil | 119 | 17.51% |
| IPP Thermal | 67 | 9.85% |
| SPP Wind | 35 | 5.09% |
| CEB Wind | 31 | 4.49% |
| Mini Hydro (Telemetered) | 24 | 3.57% |
| IPP Solar(Bulk-10MW) | 6 | 0.88% |
| IPP Wasteheat + BMP | 7 | 1.06% |
| Total | 681 | |

For Current Year

| Category | Dispatch (GWh) | |
|--------------------------|----------------|--------|
| CEB Hydro | 1,631 | 25.32% |
| CEB Coal | 2,737 | 42.51% |
| CEB Thermal Oil | 967 | 15.01% |
| IPP Thermal | 584 | 9.07% |
| SPP Wind | 125 | 1.94% |
| CEB Wind | 142 | 2.20% |
| Mini Hydro (Telemetered) | 150 | 2.33% |
| IPP Solar(Bulk-10MW) | 49 | 0.76% |
| IPP Wasteheat | 54 | 0.84% |
| Total | 6,439 | |

CEB owned Thermal Plant Dispatch

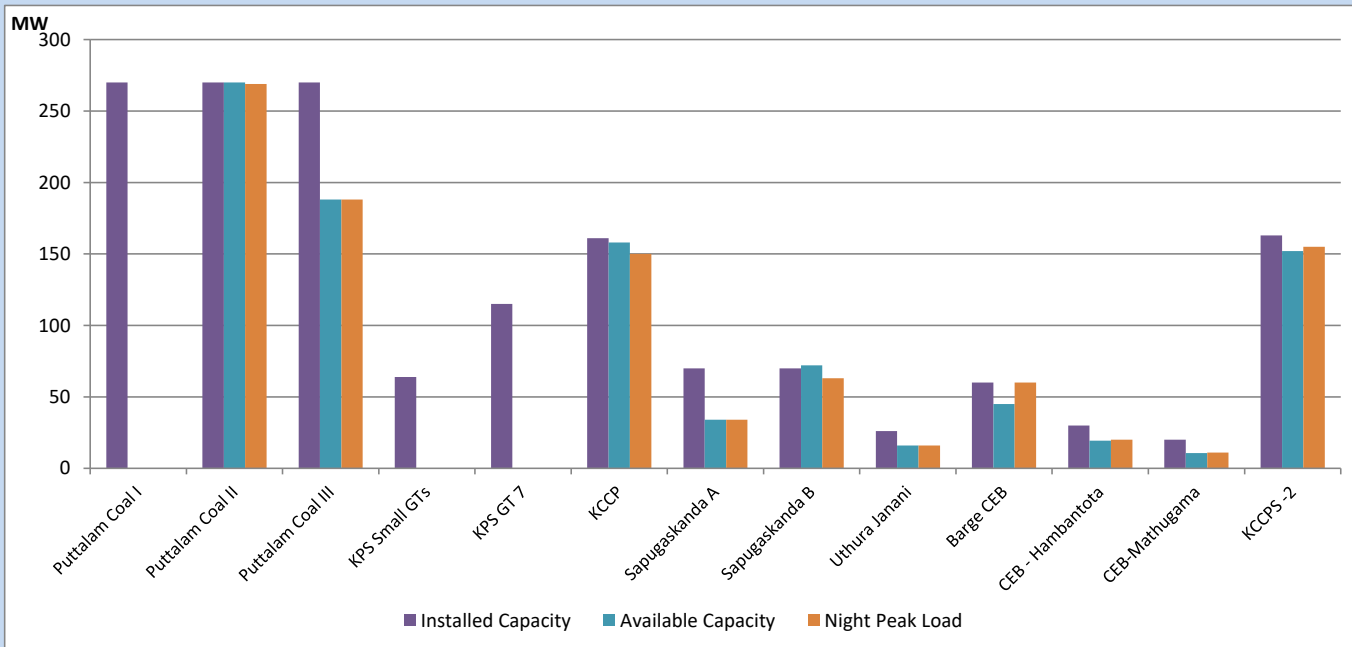
June 17, 2023



Available Generation is estimated based on plant availability at 6.00am on

June 18, 2023

CEB owned Thermal Plant Loading at the Night Peak



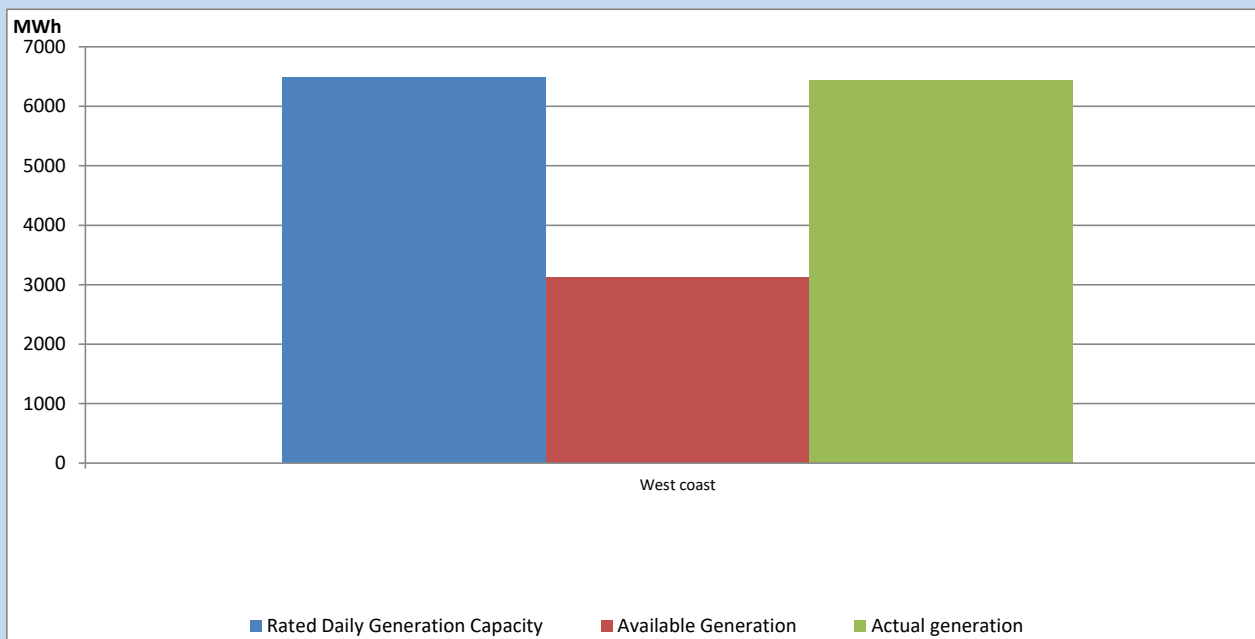
Note-

Plant availability is recorded at 6.00 am on

June 18, 2023

IPP owned Thermal Plant Dispatch

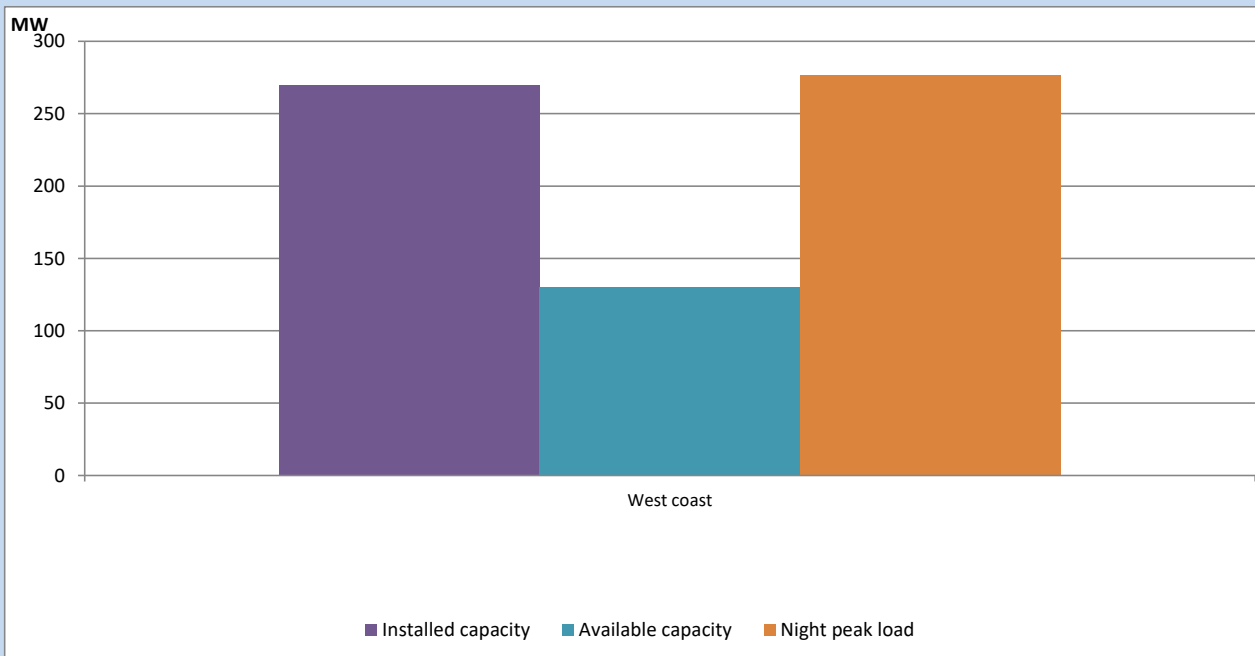
June 17, 2023



Available Generation is estimated based on plant availability at 6.00am on

June 18, 2023

IPP owned Thermal Plant Loading at the Night Peak

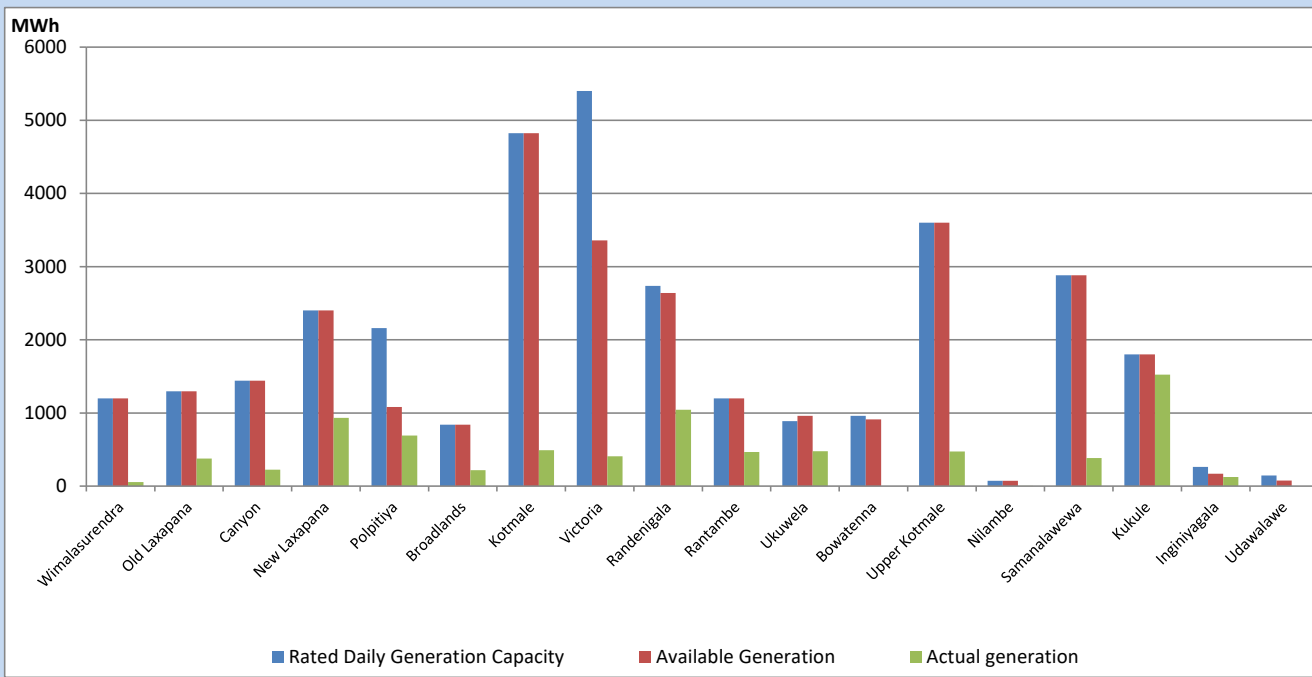


Note- Plant availability is recorded at 6.00 am on

June 18, 2023

Major Hydro Plant Dispatch

June 17, 2023

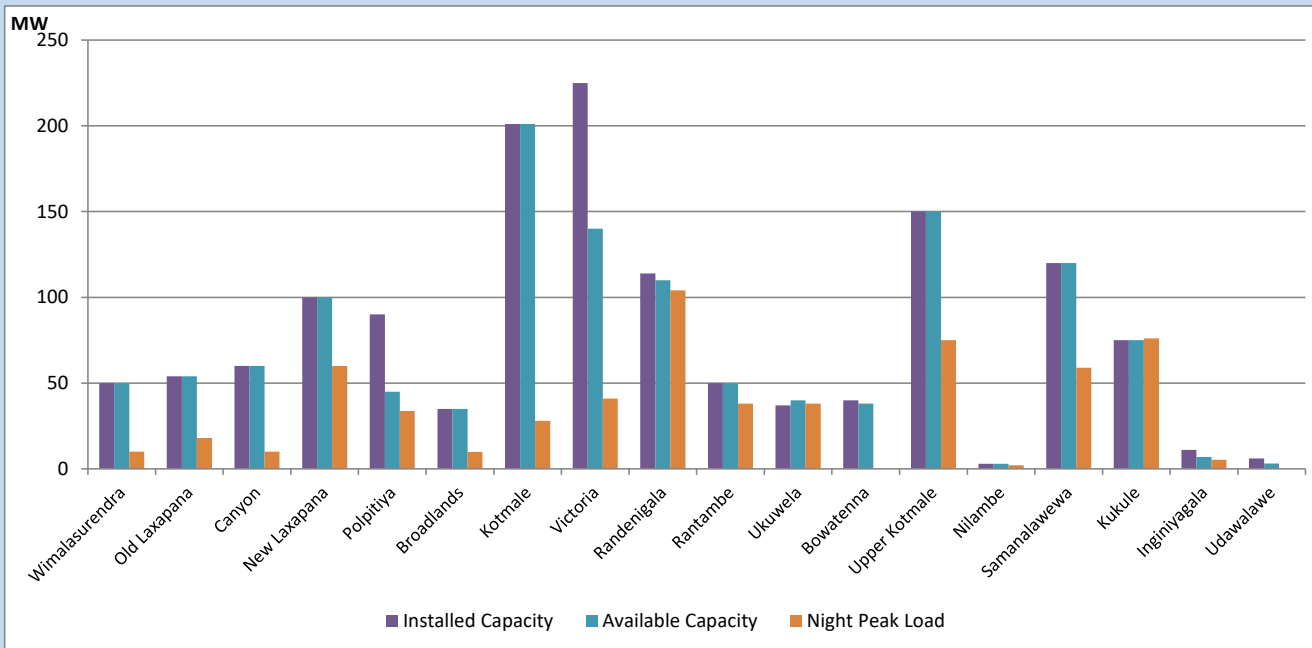


Available Generation is estimated based on plant availability at 6.00am on
Broadlands power plant is operating in the Commissioning Stage

June 18, 2023

Major Hydro Plant Loading at Night Peak

June 17, 2023



Note- Plant availability is recorded at 6.00 am on
Broadlands power plant is operating in the Commissioning Stage

June 18, 2023

Summary of Major Plant performance

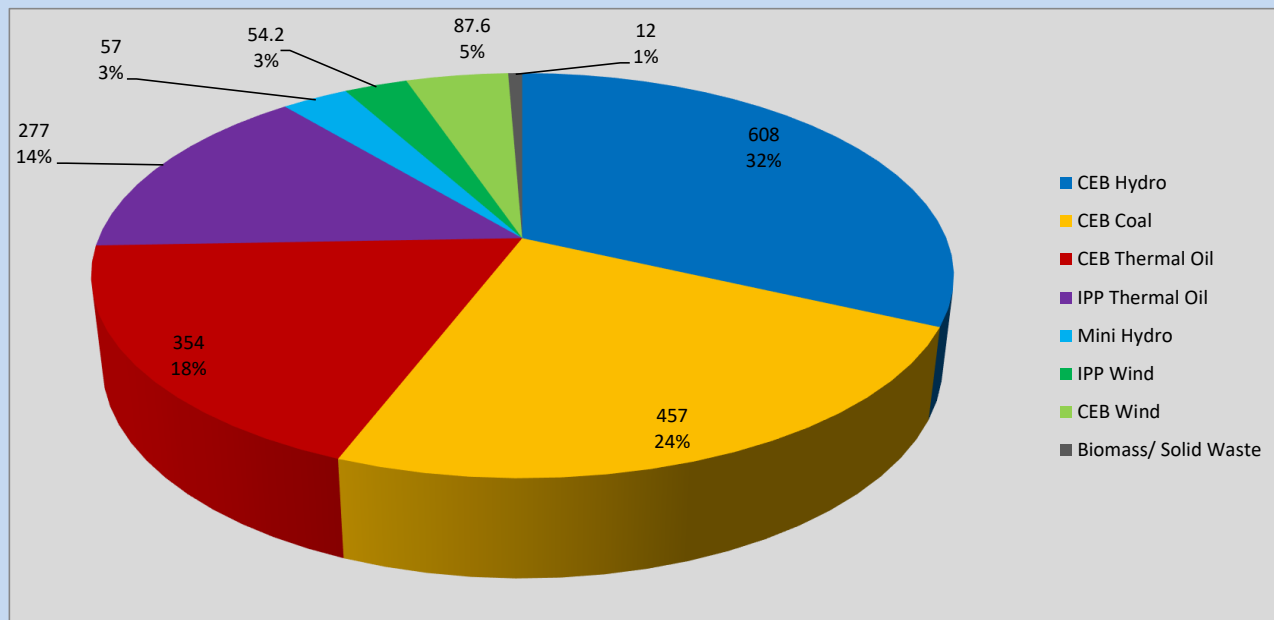
| Plant | Installed Capacity | Plant Availability | Night peak Load | Plant Dispatch |
|-------------------|--------------------|--------------------|-----------------|----------------|
| | (MW) | (MW) | (MW) | (MWh) |
| Wimalasurendra | 50 | 50 | 10 | 55 |
| Old Laxapana | 54 | 54 | 18 | 376 |
| Canyon | 60 | 60 | 10 | 225 |
| New Laxapana | 100 | 100 | 60 | 932 |
| Polpitiya | 90 | 45 | 34 | 692 |
| Broadlands | 35 | 35 | 10 | 217 |
| Kotmale | 201 | 201 | 28 | 490 |
| Victoria | 225 | 140 | 41 | 406 |
| Randenigala | 114 | 110 | 104 | 1,042 |
| Rantambe | 50 | 50 | 38 | 466 |
| Ukuwela | 37 | 40 | 38 | 476 |
| Bowatenna | 40 | 38 | 0 | 0 |
| Upper Kotmale | 150 | 150 | 75 | 472 |
| Nilambe | 3 | 3 | 2 | 3 |
| Samanalawewa | 120 | 120 | 59 | 383 |
| Kukule | 75 | 75 | 76 | 1,522 |
| Inginiyagala | 11 | 7 | 5 | 123 |
| Udawalawe | 6 | 3 | 0 | 0 |
| Puttalam Coal I | 270 | 0 | 0 | 8 |
| Puttalam Coal II | 270 | 270 | 269 | 6,458 |
| Puttalam Coal III | 270 | 188 | 188 | 4,671 |
| KPS Small GTs | 64 | 0 | 0 | 0 |
| KPS GT 7 | 115 | 0 | 0 | 0 |
| KCCP | 161 | 158 | 150 | 3,410 |
| Sapugaskanda A | 70 | 34 | 34 | 642 |
| Sapugaskanda B | 70 | 72 | 63 | 1,475 |
| Uthura Janani | 26 | 16 | 16 | 257 |
| Barge CEB | 60 | 45 | 60 | 1,133 |
| CEB-Hambantota | 30 | 19 | 20 | 114 |
| CEB-Mathugama | 20 | 11 | 11 | 51 |
| ACE Matara | 24 | 0 | 0 | 0 |
| Asia Power | 50 | 0 | 0 | 0 |
| KCCPS -2 | 163 | 152 | 155 | 1,121 |
| West Coast | 270 | 130 | 277 | 6,438 |
| Nothern Power | 36 | 0 | 0 | 0 |
| ACE Embilipitiya | 93 | 0 | 0 | 0 |
| Total | 3,483 | 2,376 | 2,062 | 39,939 |

Plant availability is the availability recorded at 6 am on

June 18, 2023

Contribution to the Night Peak in MW

June 17, 2023

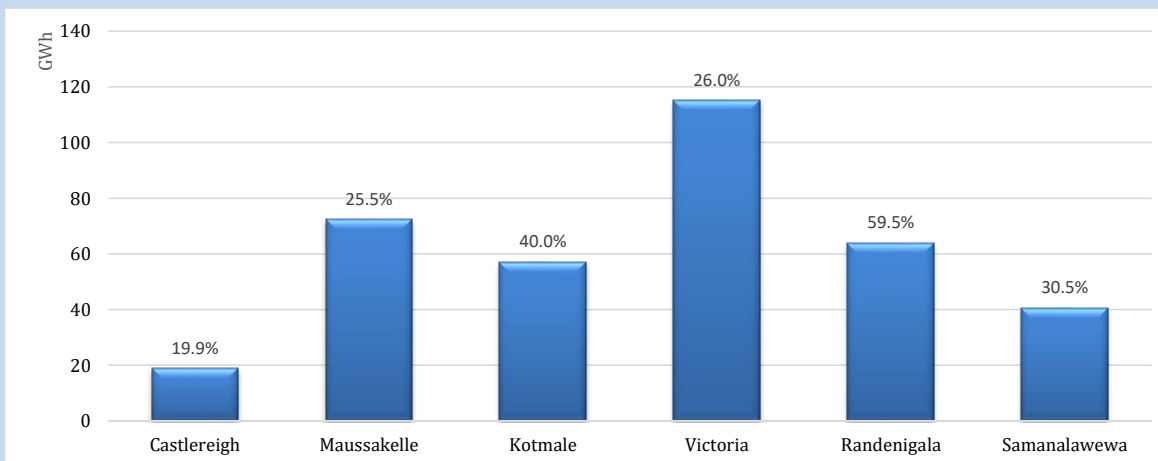


| | |
|-------------------------|----------|
| Night Peak* | 2,062 MW |
| Day Peak Maximum Demand | 1,740 MW |
| Day Peak Minimum Demand | 1,562 MW |
| Off Peak Minimum Demand | 1,325 MW |

Above figures are excluding contribution from roof top solar, non telemetered solar and mini hydro plants

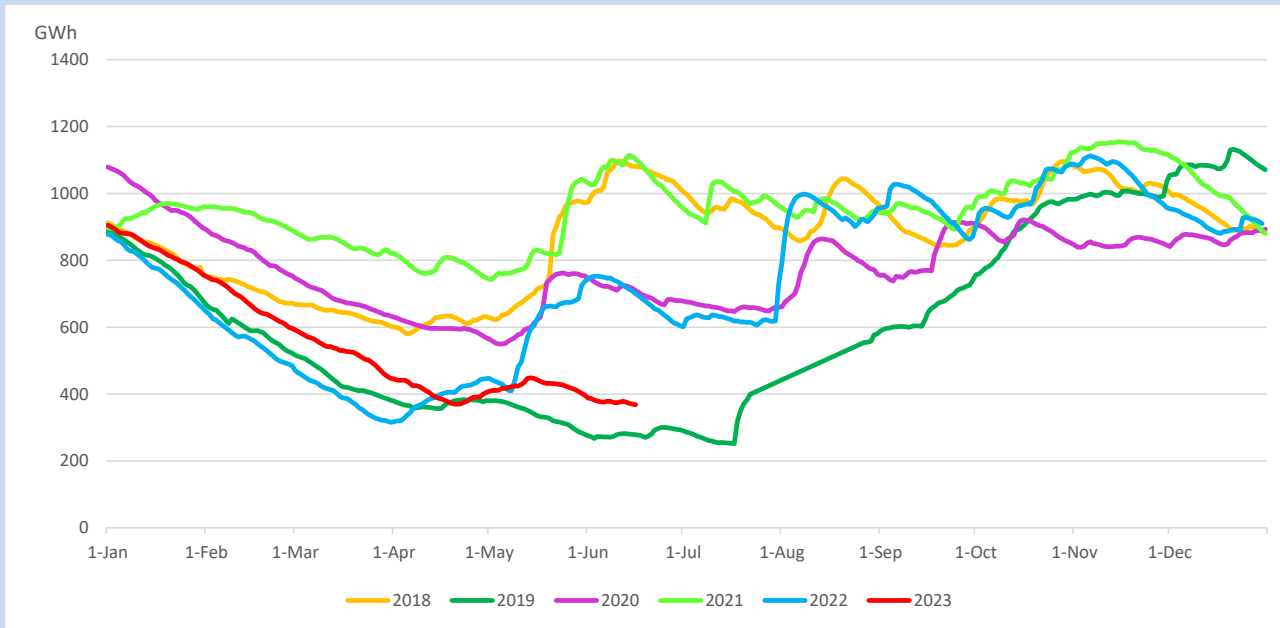
Reservoir Levels -

as at 06.00 Hr on June 18, 2023

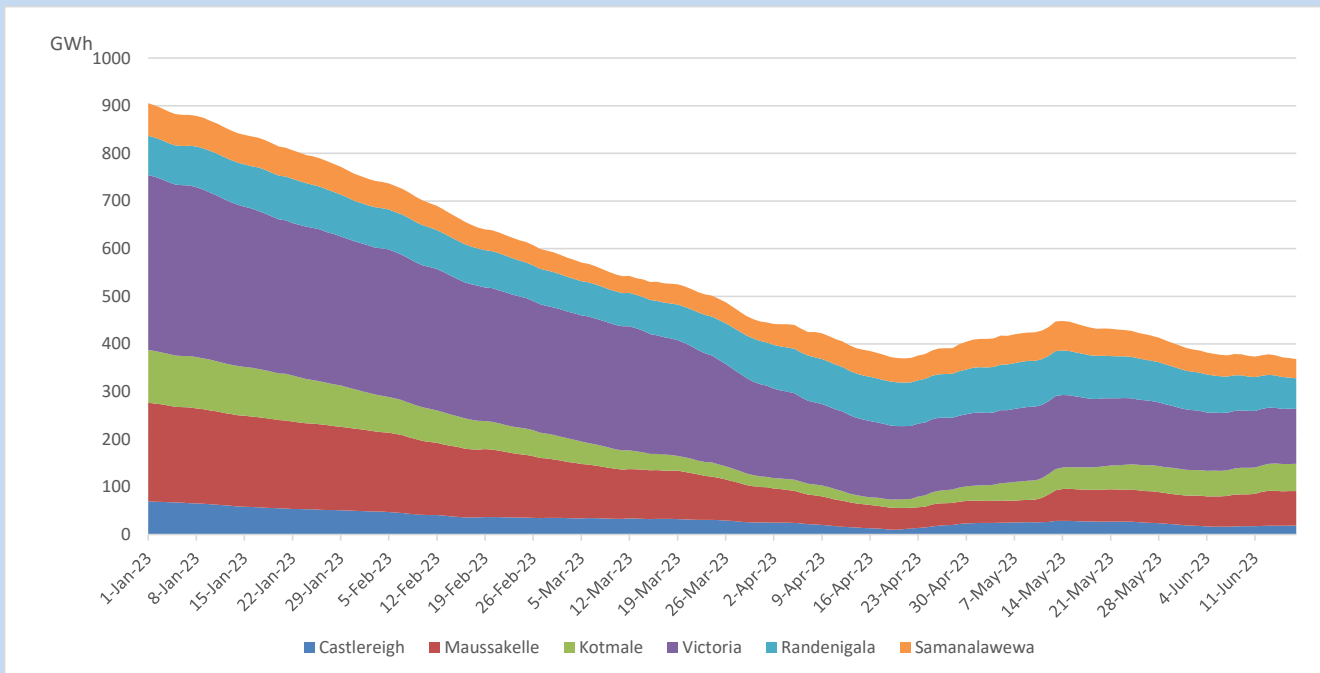


| | |
|-----------------------|-----------|
| Total Reservoir Level | 368.4 GWh |
| % of Total capacity | 30.5% |

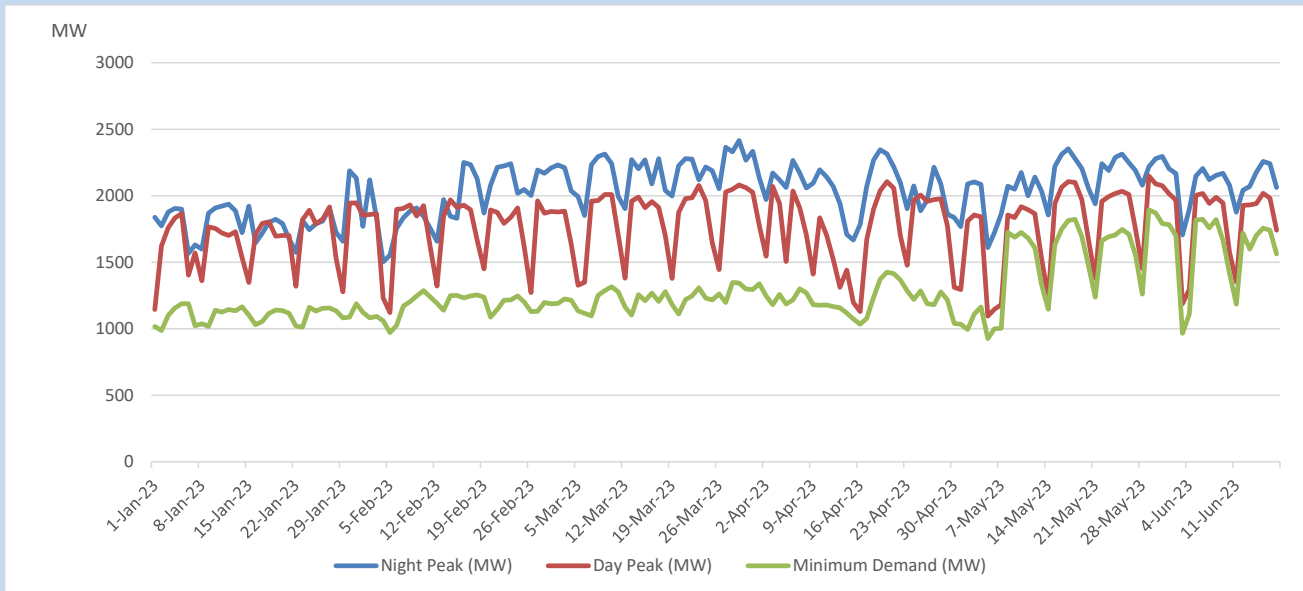
Comparison of Total Reservoir Storage Levels with Past Years



Variation of Major Hydro Reservoir Levels in the current year (GWh)



Variation of Demand during the current year

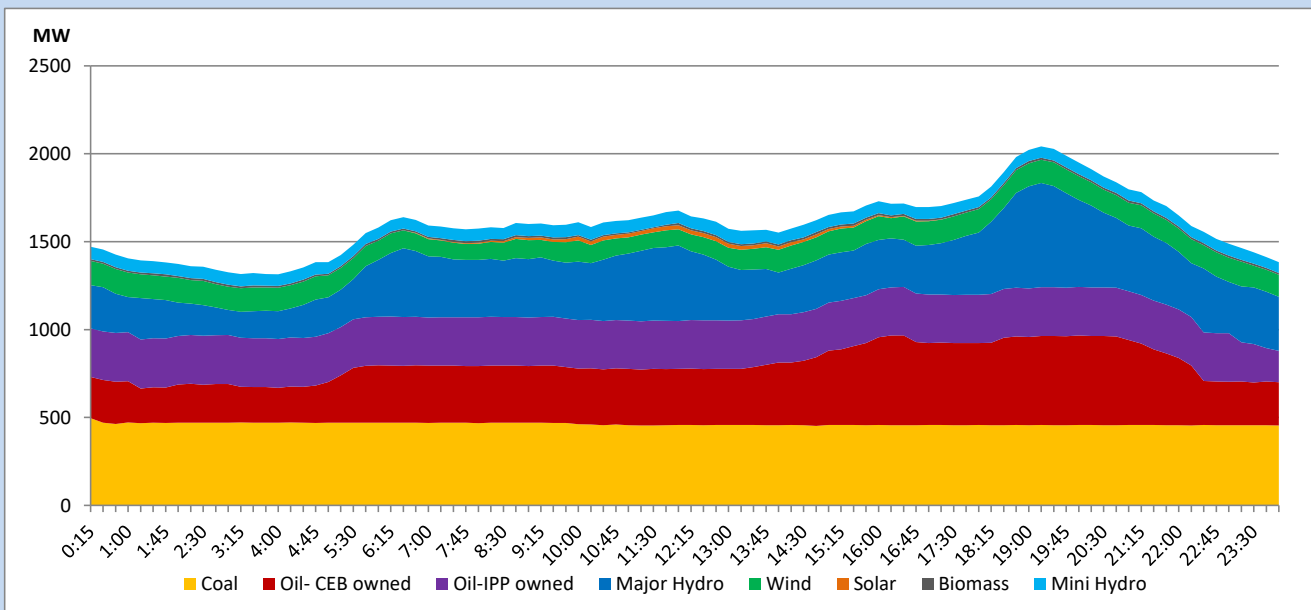


The above figures are excluding contribution from roof top solar, non telemetered solar and mini hydro plants

Daily Load Curve

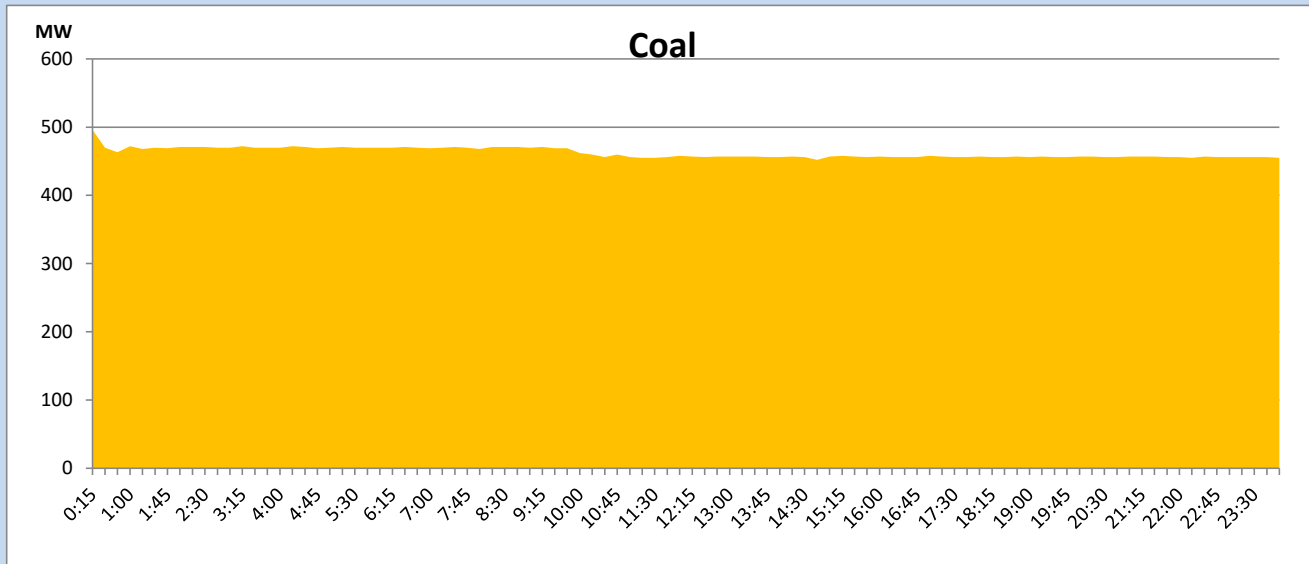
June 17, 2023

Solar and wind data is based on Telemetered Power Stations only



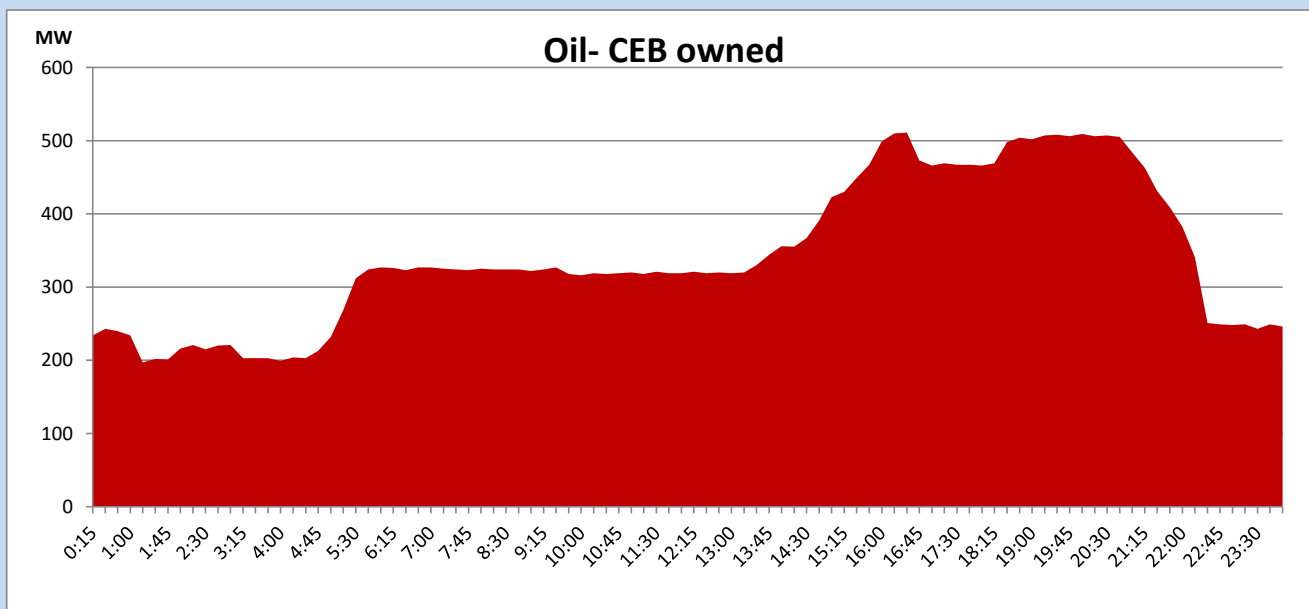
Coal Generation during

June 17, 2023



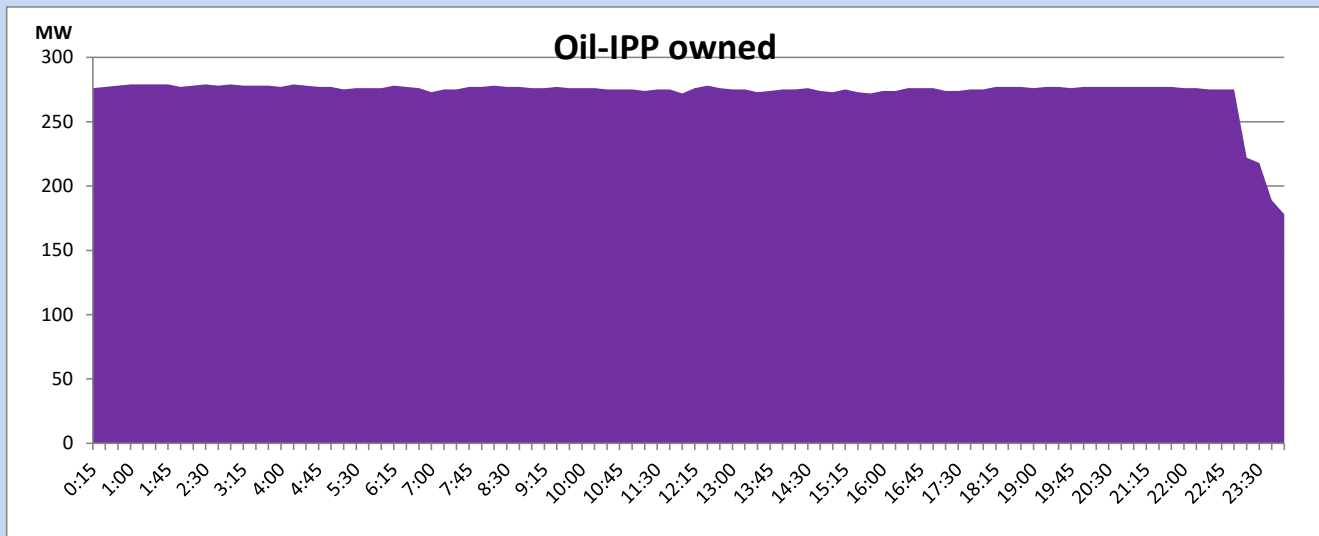
CEB Oil Plant Generation during

June 17, 2023



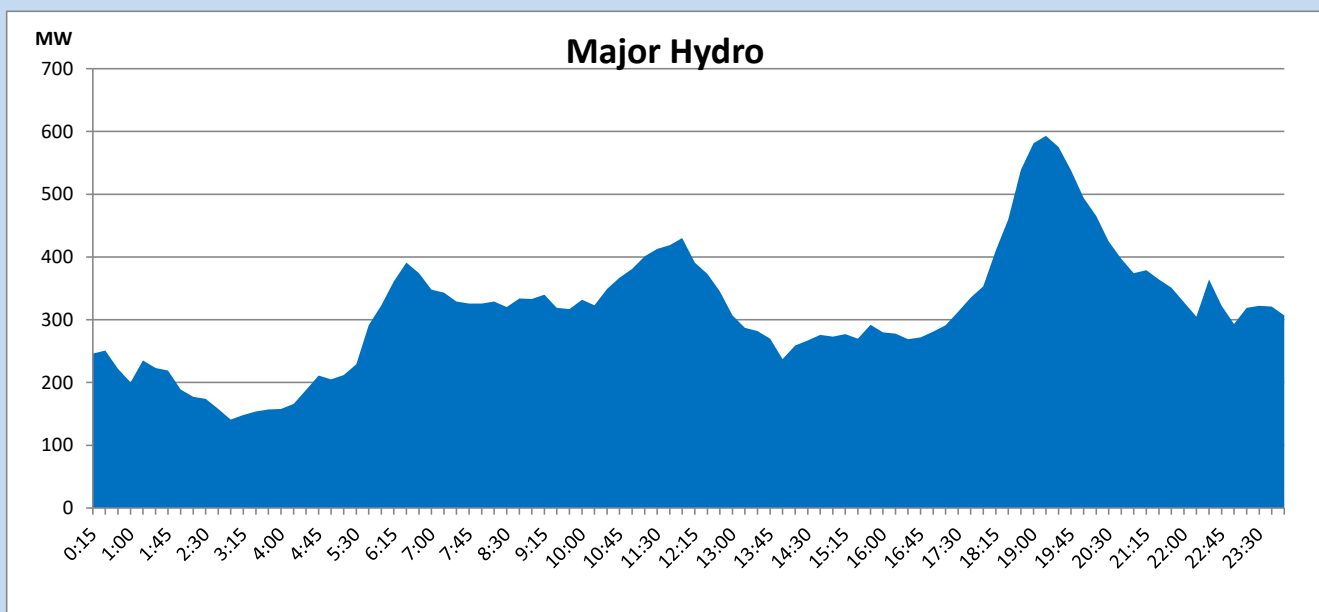
IPP Oil Plant Generation during

June 17, 2023



Major Hydro Generation during

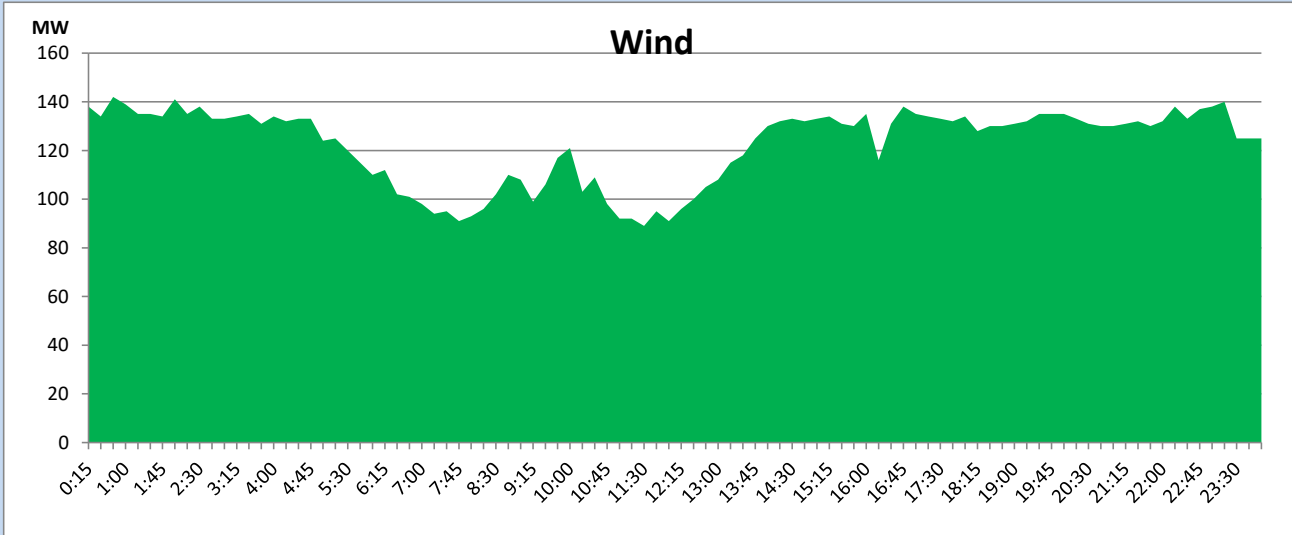
June 17, 2023



Wind Generation during

June 17, 2023

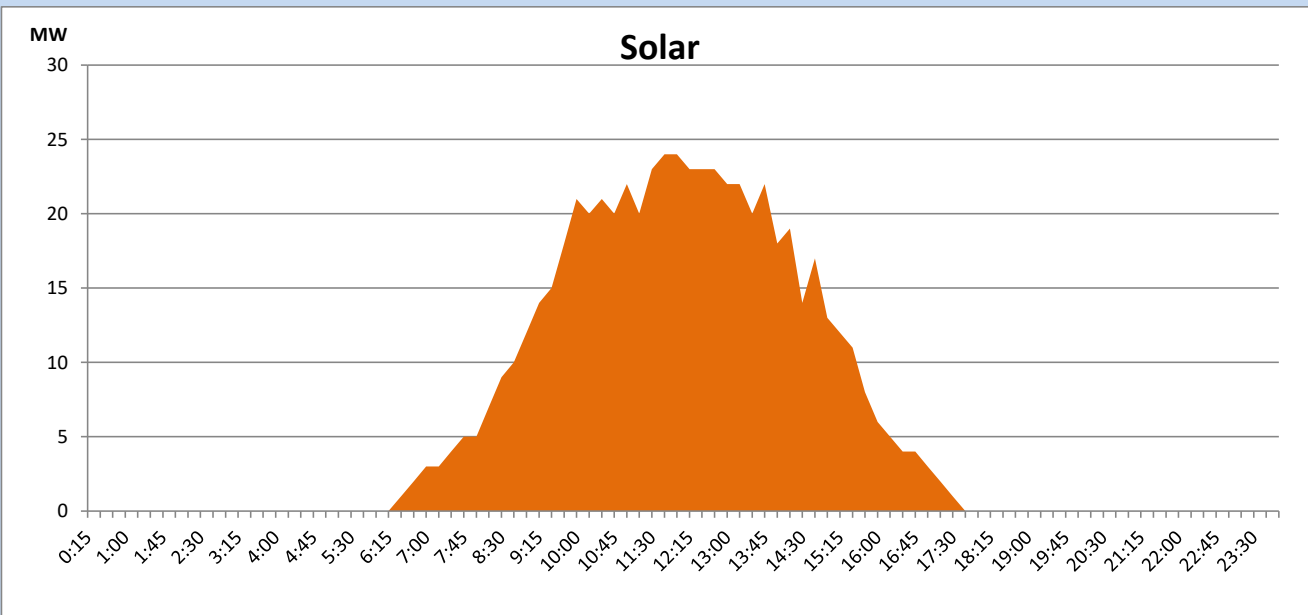
Based on Telemetered Power Stations only



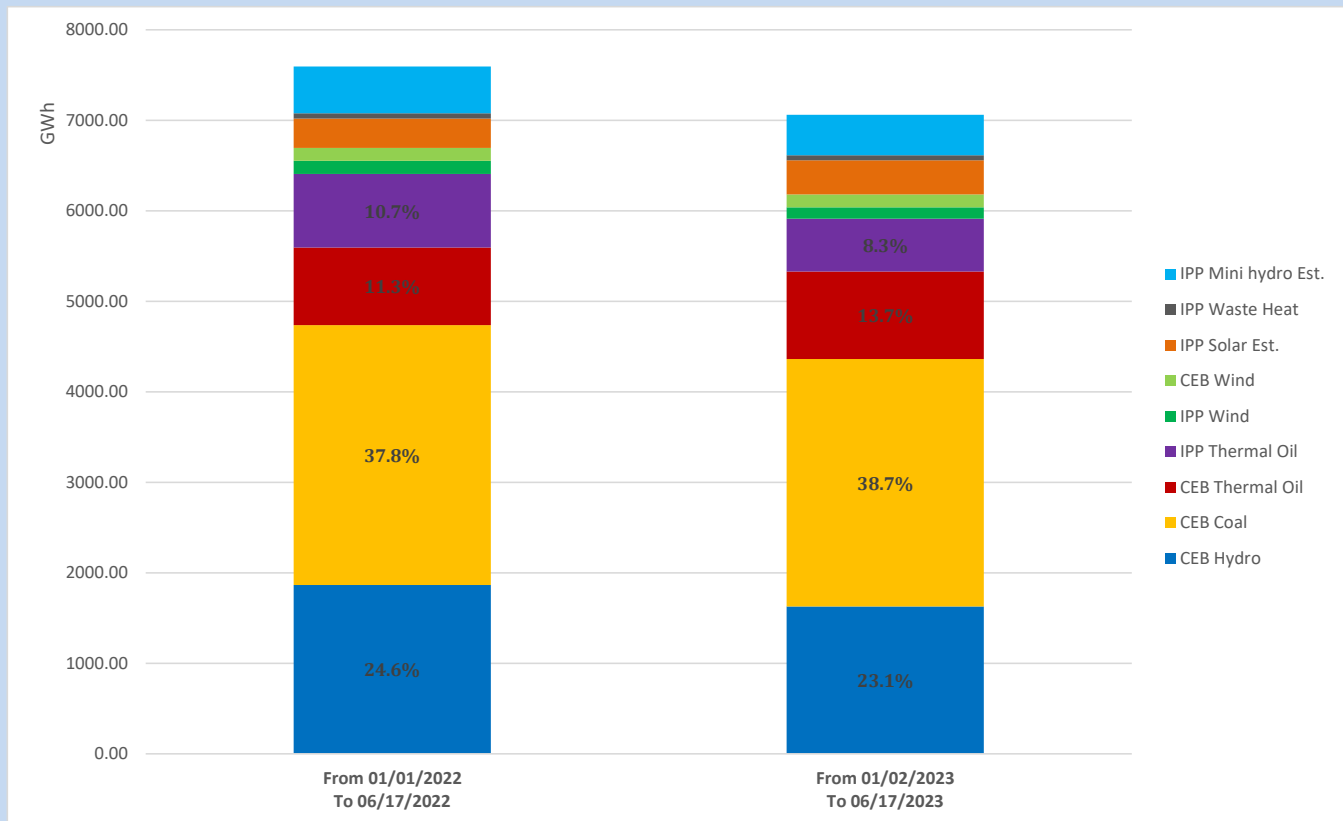
Solar Generation during

June 17, 2023

Based on Telemetered Power Stations only



Cumulative Dispatch Comparison with Last Year



The above figures are including contribution from roof top solar, non telemetered solar and mini hydro plants

Thermal Plant Fuel types

| Power Station | Primary Fuel |
|---------------------------------------|---------------------|
| CEB Thermal | |
| Sapugaskanda 1 | Heavy Fuel |
| Sapugaskanda 2 | Heavy Fuel |
| Kelanitissa Small Gas Turbines | Auto Diesel |
| GT 7 - Kelanitissa | Auto Diesel |
| Kelanitissa CCY | Naphtha or Diesel |
| Lakvijaya 1 | Coal |
| Lakvijaya 2 | Coal |
| Lakvijaya 3 | Coal |
| Uthuru Janani | Heavy Fuel |
| Barge CEB | Heavy Fuel |
| KCCPS -2 | Auto Diesel |

| Power Station | Primary Fuel |
|------------------------|--------------------------|
| Private Thermal | |
| West Coast | Auto Diesel / Heavy Fuel |

Major Incidents reported during the day

June 17, 2023

Nil.