

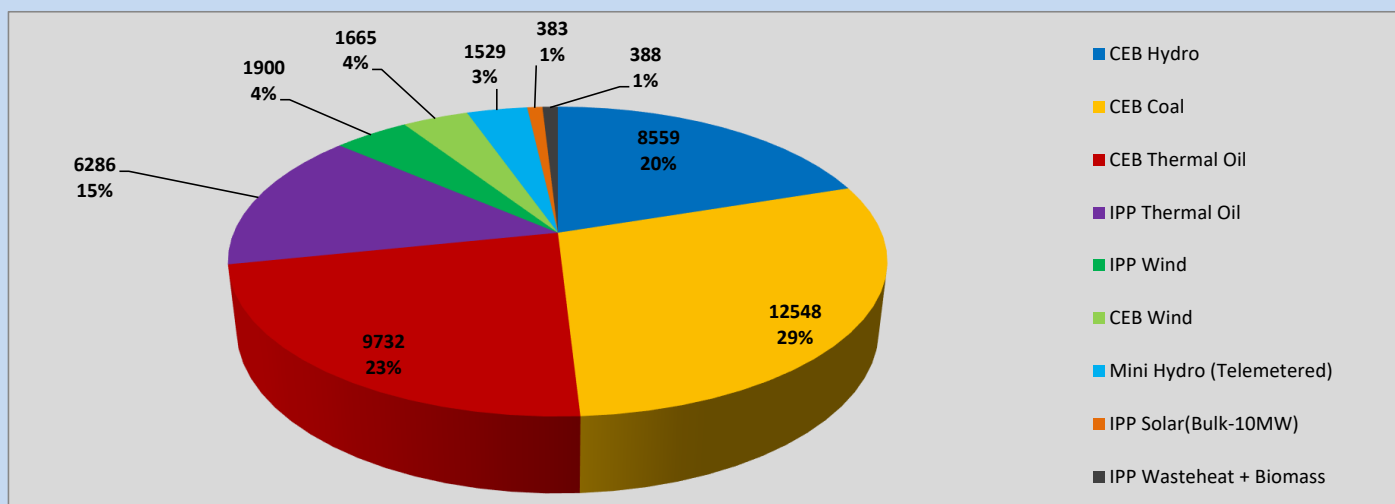
Generation and Reservoirs Statistics

June 16, 2023



PUBLIC UTILITIES COMMISSION OF SRI LANKA

Daily Generation Mix in MWh



Total Generation (Excluding estimated figures) =

42,990 MWh

Estimated figures of CEB generation report

Estimated unserved energy = 0.00 GWh

Estimated Mini Hydro (Non telemetered) = 2552 MWh

Estimated IPP Solar PV (Bulk 1-10MW) = 304 MWh

Estimated Solar Roof Top PV = 1890 MWh

Cumulative Dispatch

Following data excludes the contribution from roof top solar, non telemetered solar and mini hydro plants

For Current Month

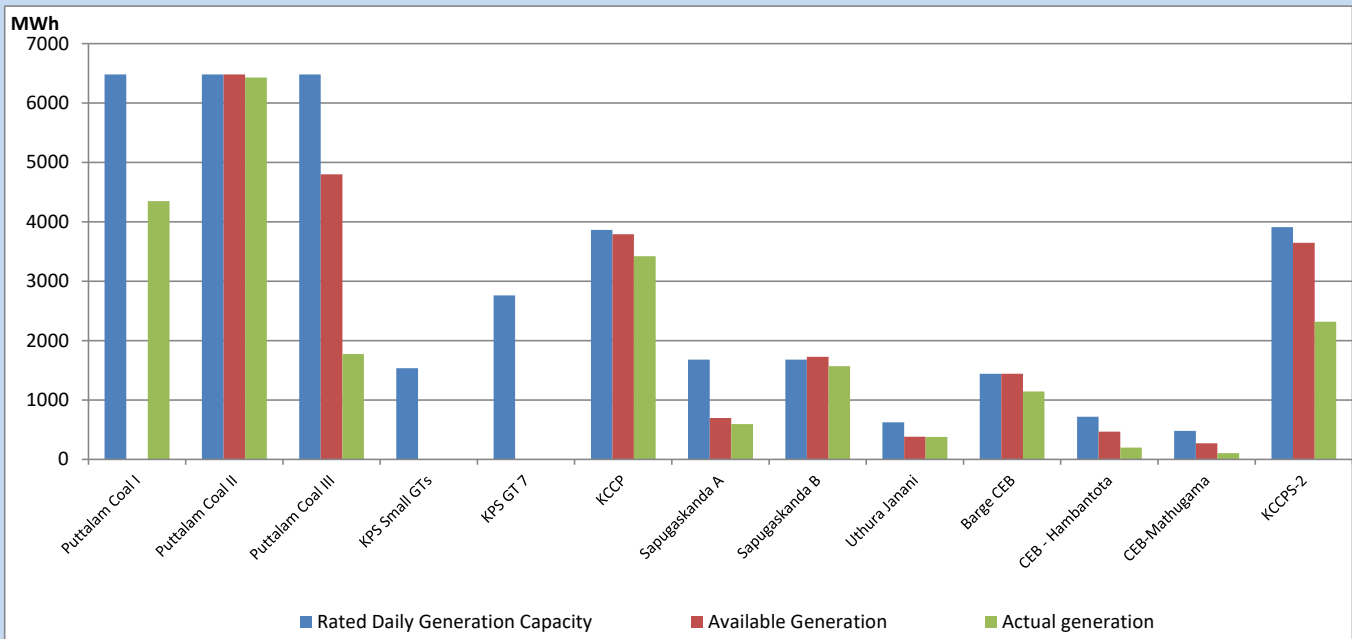
Category	Dispatch (GWh)	
CEB Hydro	142	22.15%
CEB Coal	231	36.03%
CEB Thermal Oil	111	17.32%
IPP Thermal	61	9.46%
SPP Wind	32	5.03%
CEB Wind	29	4.48%
Mini Hydro (Telemetered)	23	3.57%
IPP Solar(Bulk-10MW)	6	0.90%
IPP Wasteheat + BMP	7	1.06%
Total	641	

For Current Year

Category	Dispatch (GWh)	
CEB Hydro	1,623	25.36%
CEB Coal	2,726	42.60%
CEB Thermal Oil	958	14.98%
IPP Thermal	578	9.03%
SPP Wind	123	1.92%
CEB Wind	140	2.19%
Mini Hydro (Telemetered)	149	2.32%
IPP Solar(Bulk-10MW)	49	0.76%
IPP Wasteheat	54	0.84%
Total	6,399	

CEB owned Thermal Plant Dispatch

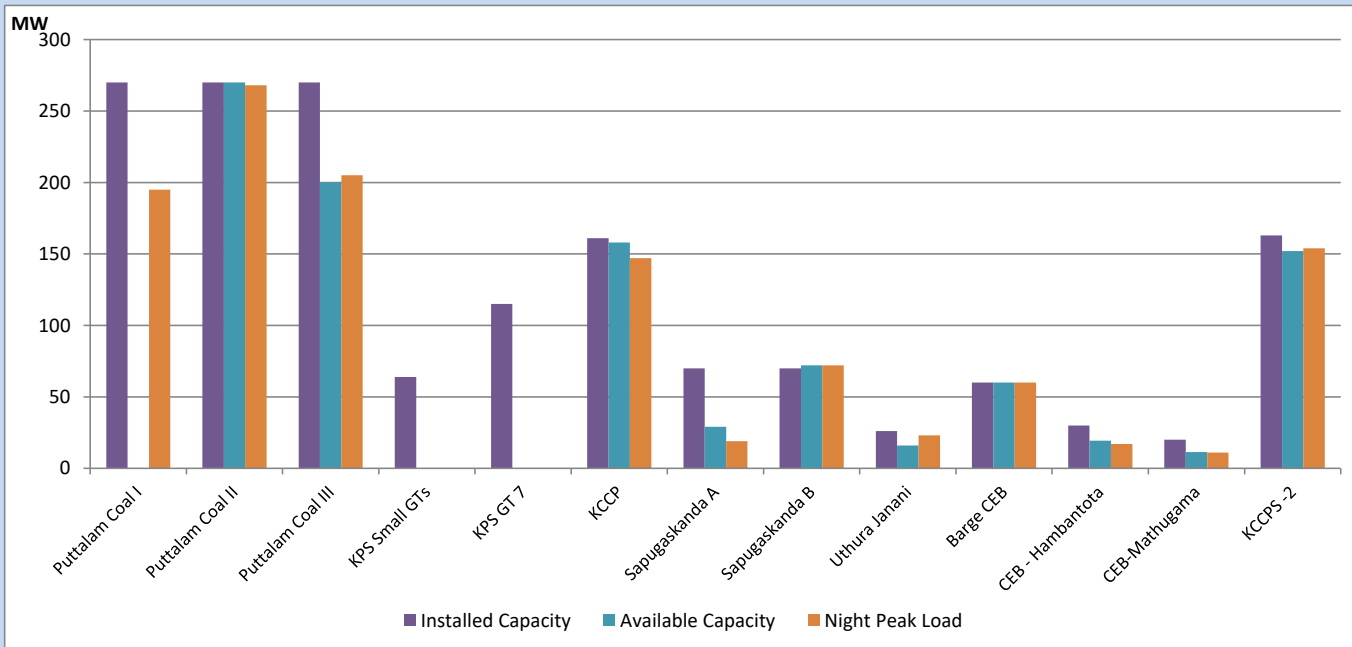
June 16, 2023



Available Generation is estimated based on plant availability at 6.00am on

June 17, 2023

CEB owned Thermal Plant Loading at the Night Peak



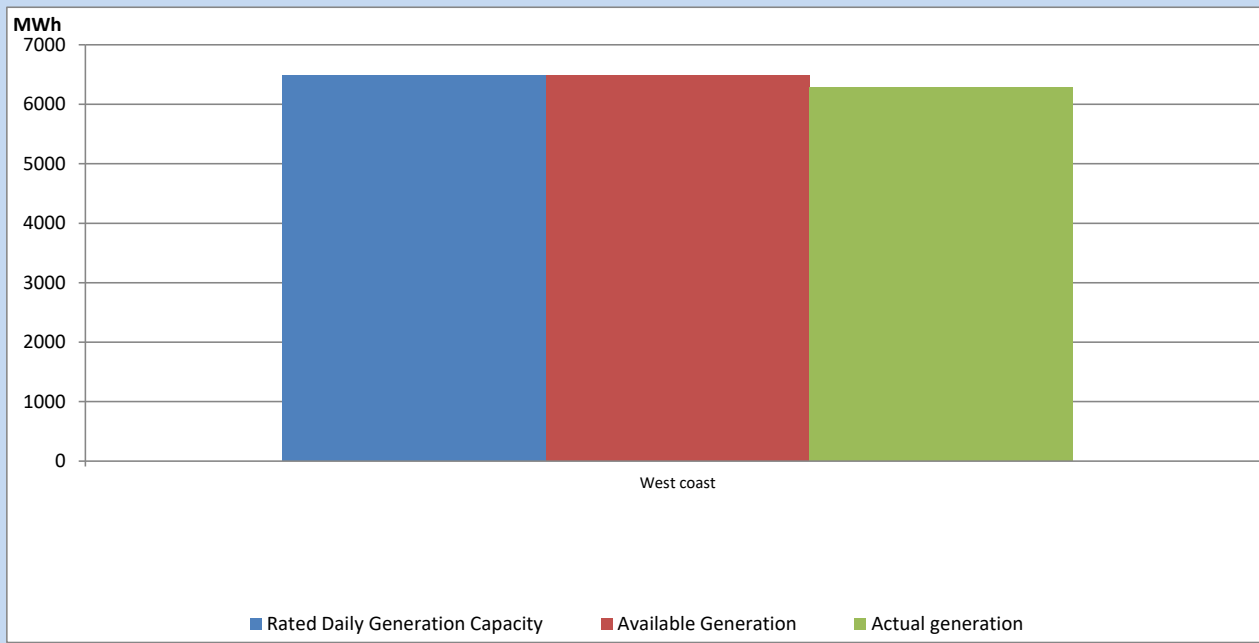
Note-

Plant availability is recorded at 6.00 am on

June 17, 2023

IPP owned Thermal Plant Dispatch

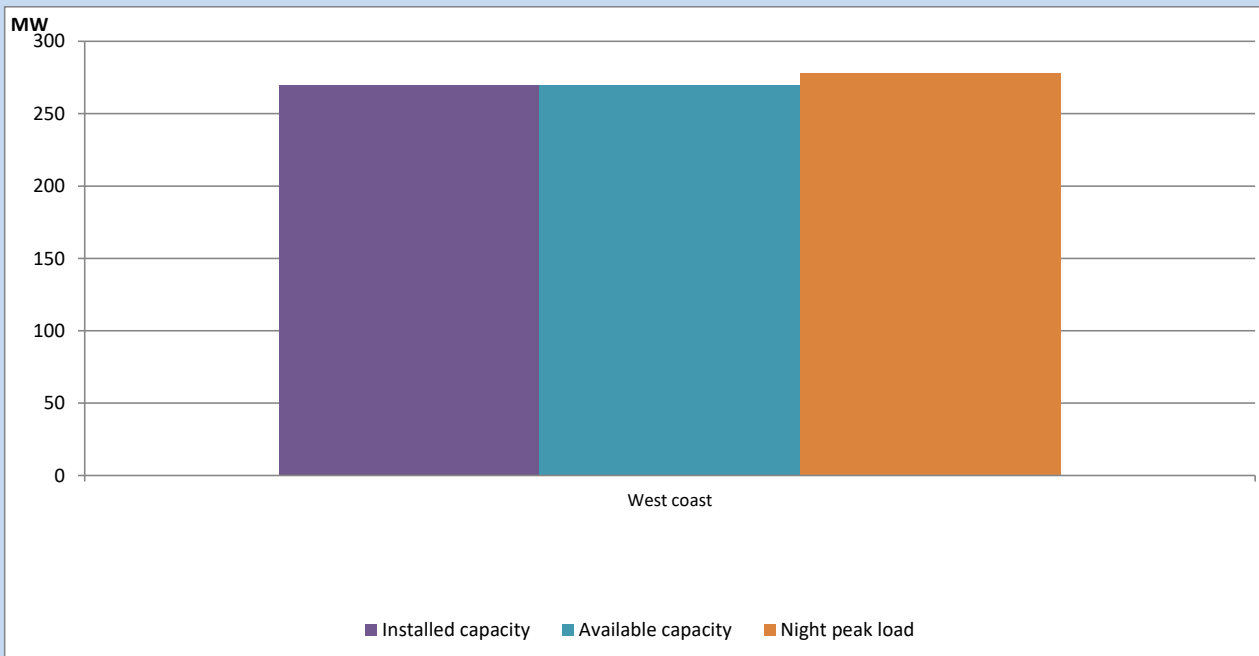
June 16, 2023



Available Generation is estimated based on plant availability at 6.00am on

June 17, 2023

IPP owned Thermal Plant Loading at the Night Peak

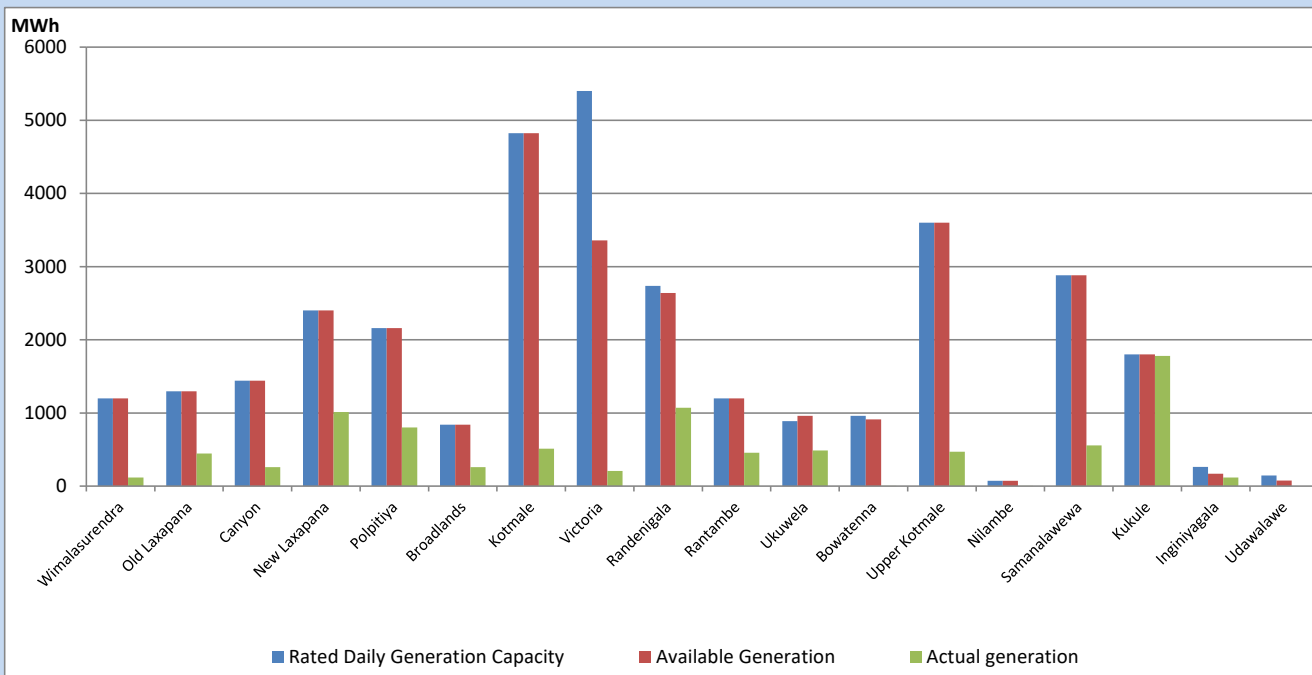


Note- Plant availability is recorded at 6.00 am on

June 17, 2023

Major Hydro Plant Dispatch

June 16, 2023

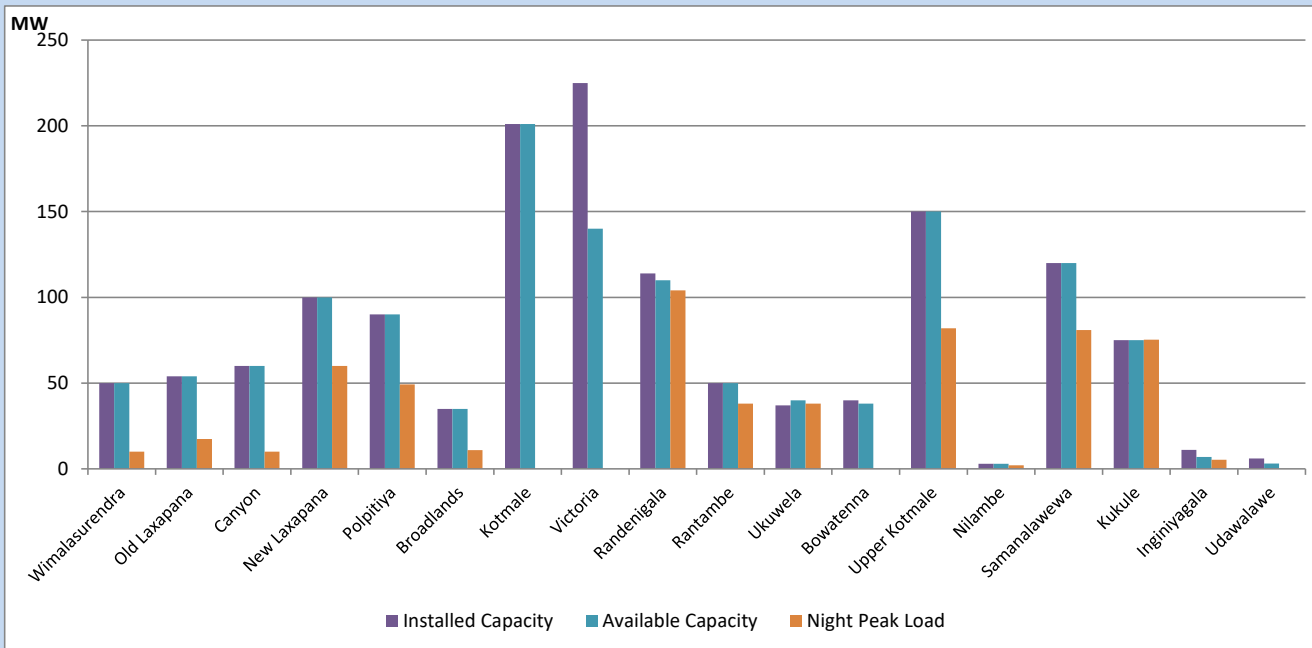


Available Generation is estimated based on plant availability at 6.00am on
Broadlands power plant is operating in the Commissioning Stage

June 17, 2023

Major Hydro Plant Loading at Night Peak

June 16, 2023



Note- Plant availability is recorded at 6.00 am on
Broadlands power plant is operating in the Commissioning Stage

June 17, 2023

Summary of Major Plant performance

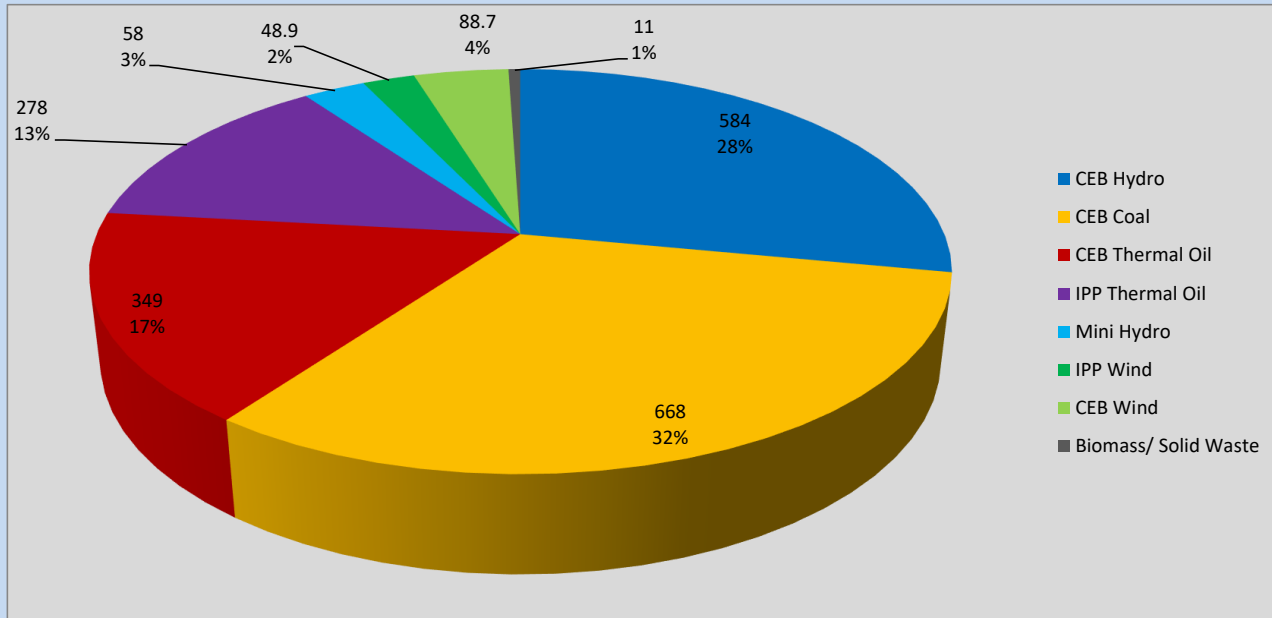
Plant	Installed Capacity	Plant Availability	Night peak Load	Plant Dispatch
	(MW)	(MW)	(MW)	(MWh)
Wimalasurendra	50	50	10	117
Old Laxapana	54	54	17	444
Canyon	60	60	10	259
New Laxapana	100	100	60	1,011
Polpitiya	90	90	49	803
Broadlands	35	35	11	260
Kotmale	201	201	0	510
Victoria	225	140	0	208
Randenigala	114	110	104	1,072
Rantambe	50	50	38	456
Ukuwela	37	40	38	487
Bowatenna	40	38	0	4
Upper Kotmale	150	150	82	469
Nilambe	3	3	2	4
Samanalawewa	120	120	81	557
Kukule	75	75	75	1,781
Inginiyagala	11	7	5	117
Udawalawe	6	3	0	0
Puttalam Coal I	270	0	195	4,347
Puttalam Coal II	270	270	268	6,428
Puttalam Coal III	270	200	205	1,773
KPS Small GTs	64	0	0	0
KPS GT 7	115	0	0	0
KCCP	161	158	147	3,421
Sapugaskanda A	70	29	19	595
Sapugaskanda B	70	72	72	1,568
Uthura Janani	26	16	23	377
Barge CEB	60	60	60	1,146
CEB-Hambantota	30	19	17	200
CEB-Mathugama	20	11	11	107
ACE Matara	24	0	0	0
Asia Power	50	0	0	0
KCCPS -2	163	152	154	2,318
West Coast	270	270	278	6,286
Nothern Power	36	0	0	0
ACE Embilipitiya	93	0	0	0
Total	3,483	2,584	2,239	42,990

Plant availability is the availability recorded at 6 am on

June 17, 2023

Contribution to the Night Peak in MW

June 16, 2023

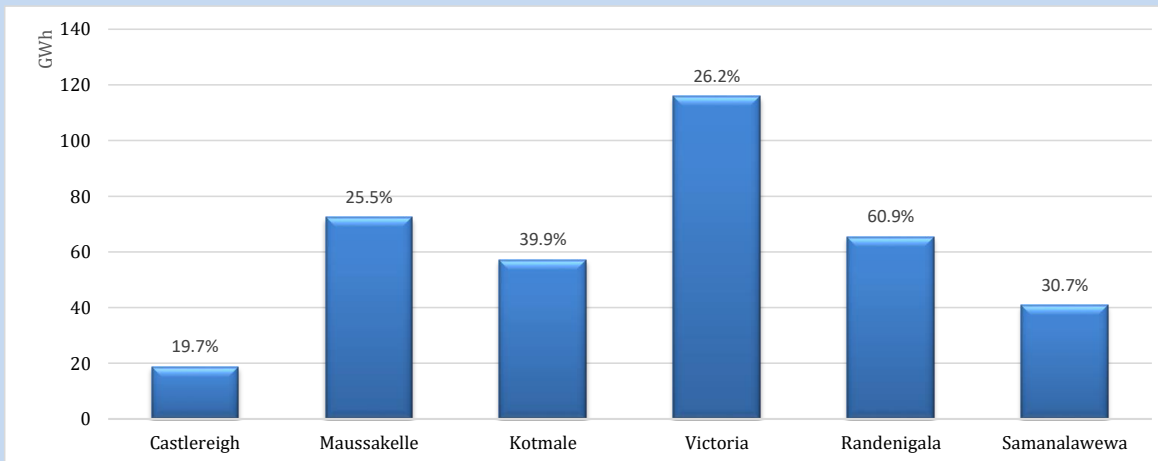


Night Peak*	2,240 MW
Day Peak Maximum Demand	1,982 MW
Day Peak Minimum Demand	1,740 MW
Off Peak Minimum Demand	1,309 MW

Above figures are excluding contribution from roof top solar, non telemetered solar and mini hydro plants

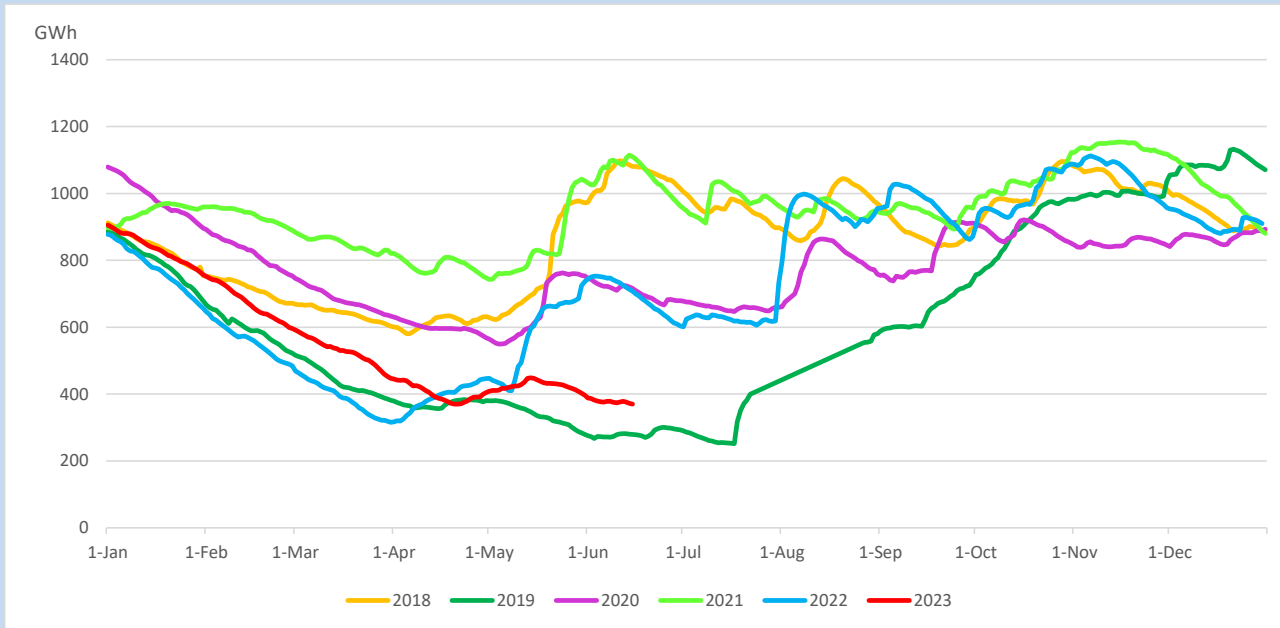
Reservoir Levels -

as at 06.00 Hr on June 17, 2023

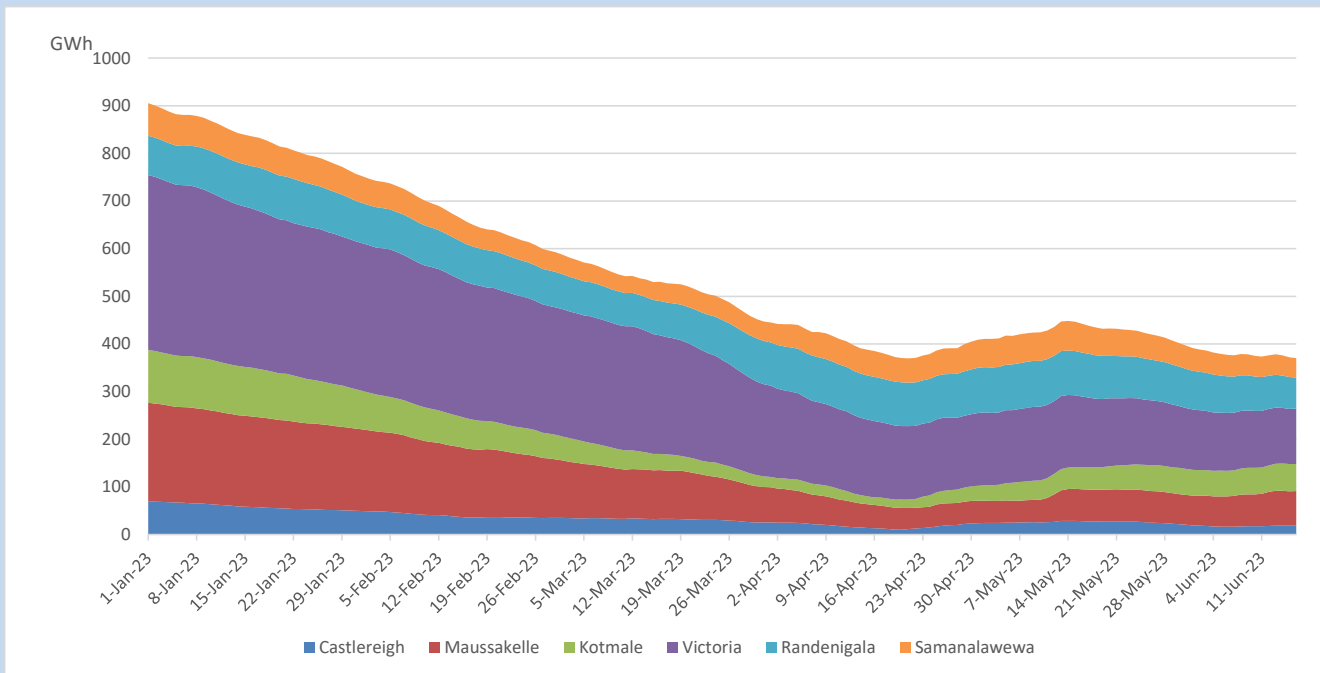


Total Reservoir Level	370.3 GWh
% of Total capacity	30.7%

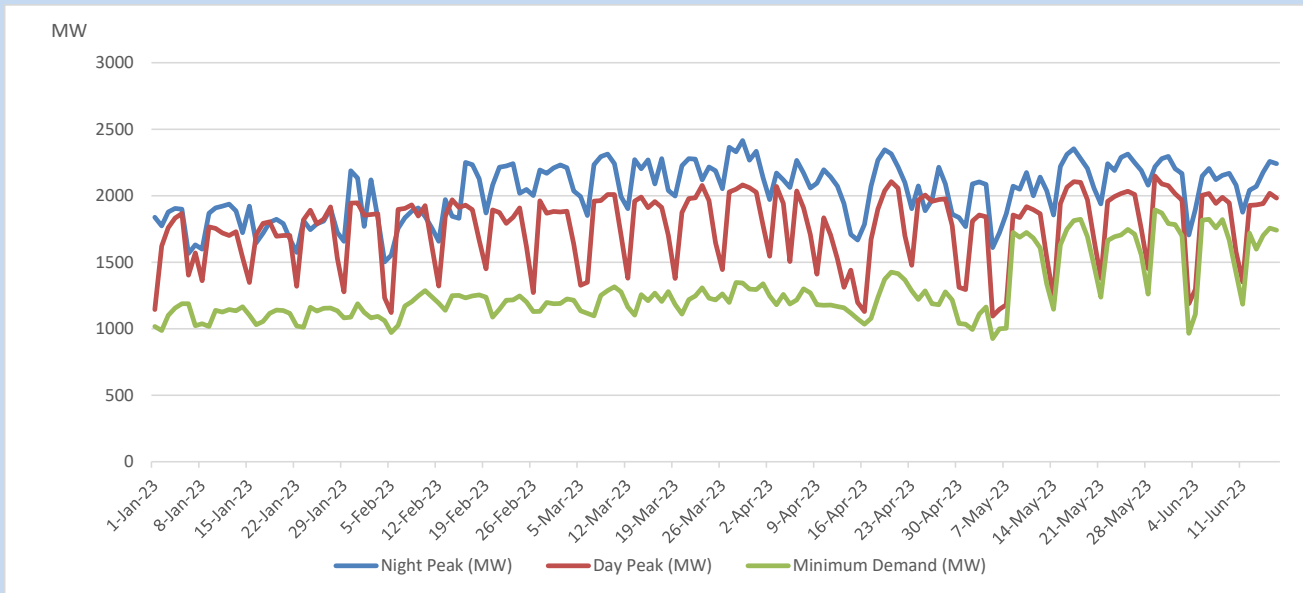
Comparison of Total Reservoir Storage Levels with Past Years



Variation of Major Hydro Reservoir Levels in the current year (GWh)



Variation of Demand during the current year

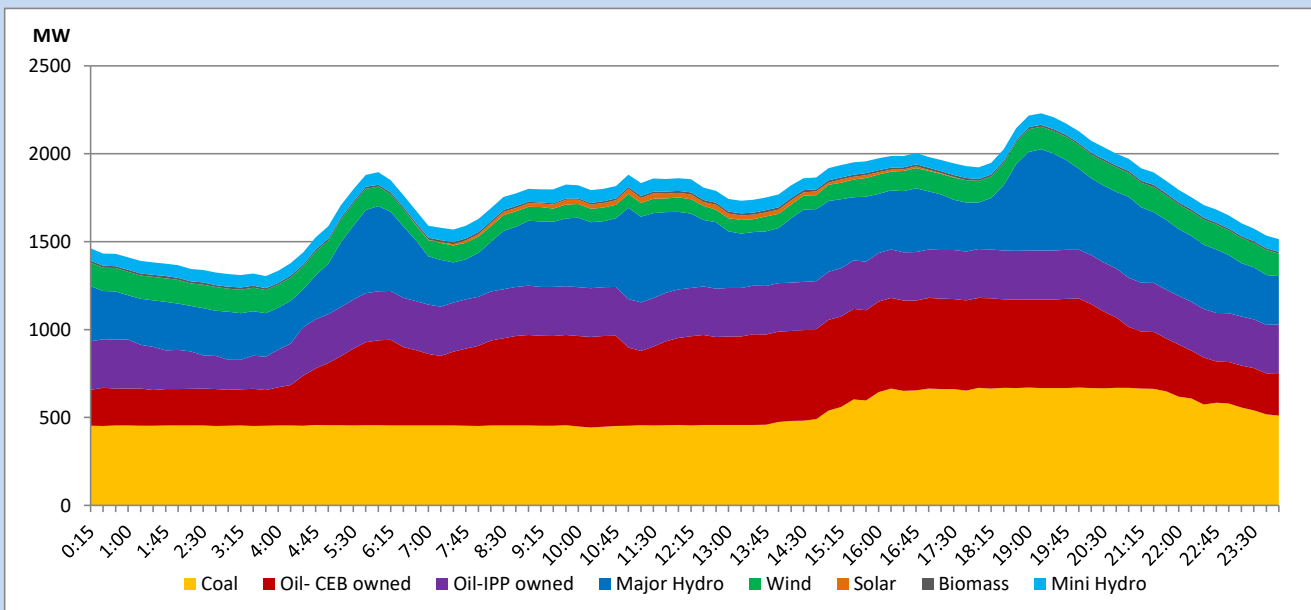


The above figures are excluding contribution from roof top solar, non telemetered solar and mini hydro plants

Daily Load Curve

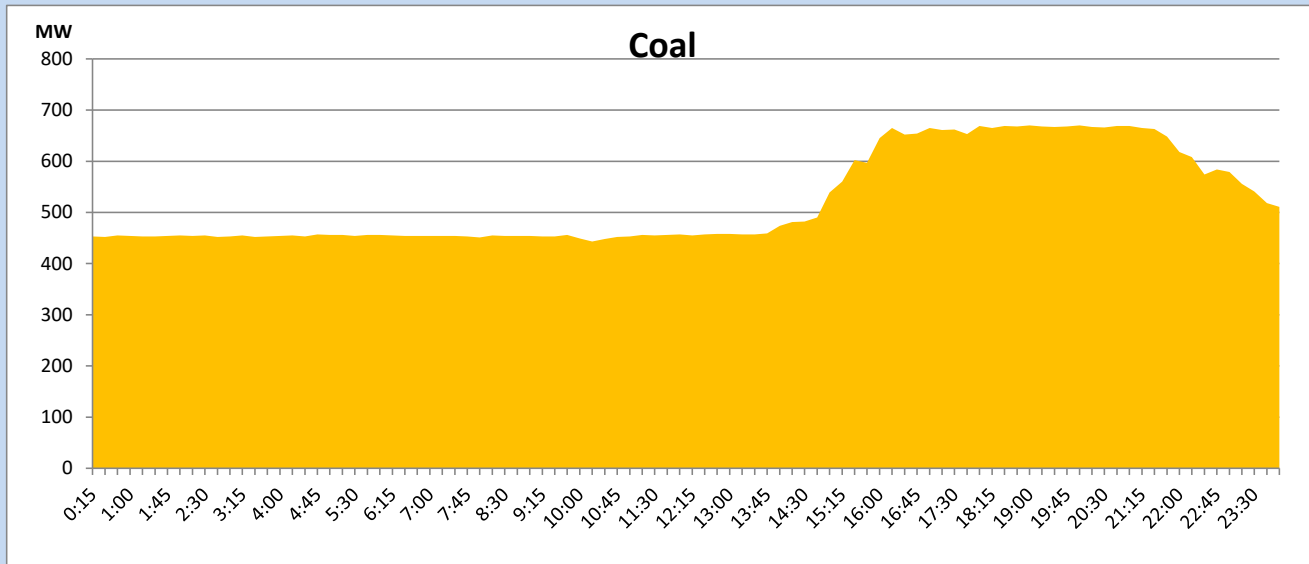
June 16, 2023

Solar and wind data is based on Telemetered Power Stations only



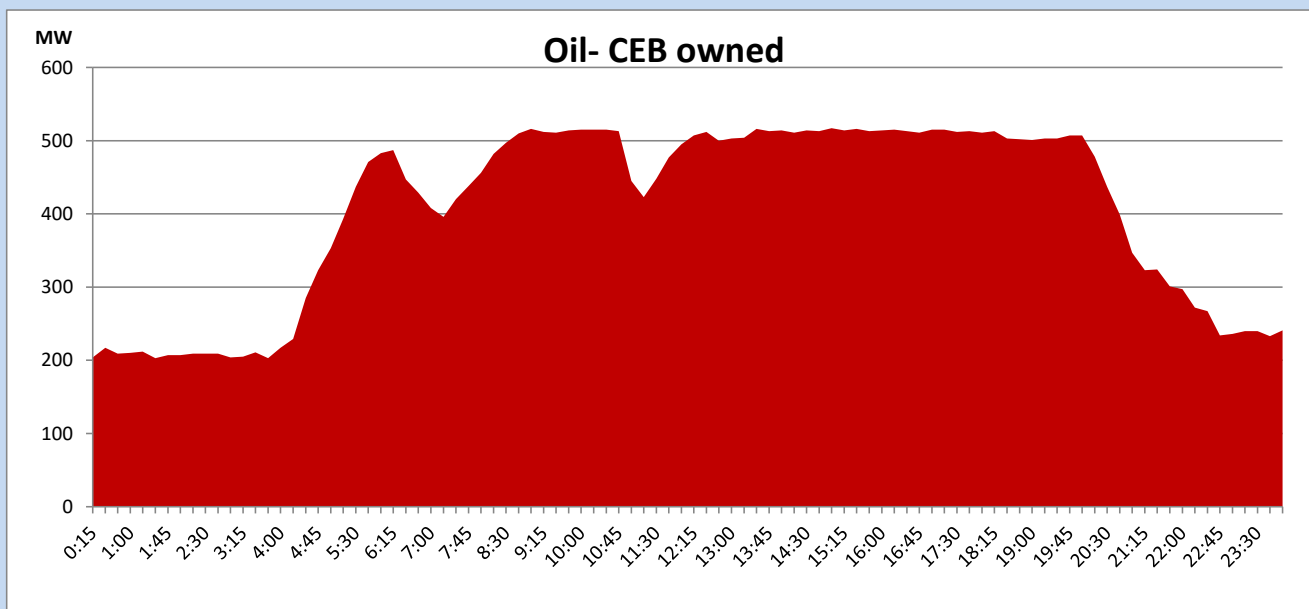
Coal Generation during

June 16, 2023



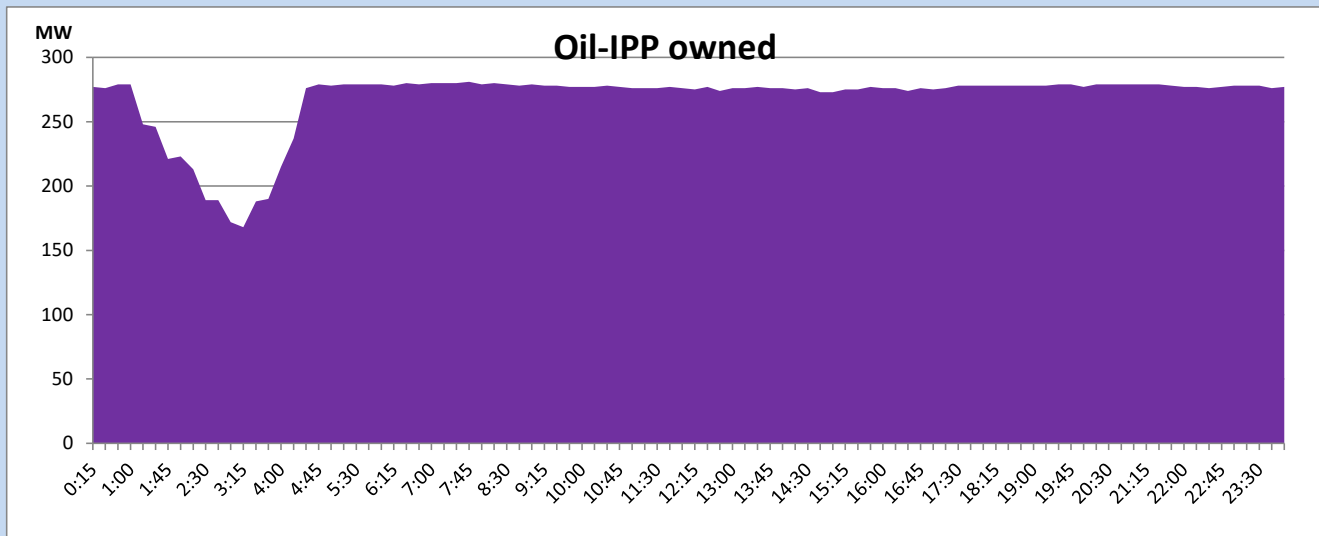
CEB Oil Plant Generation during

June 16, 2023



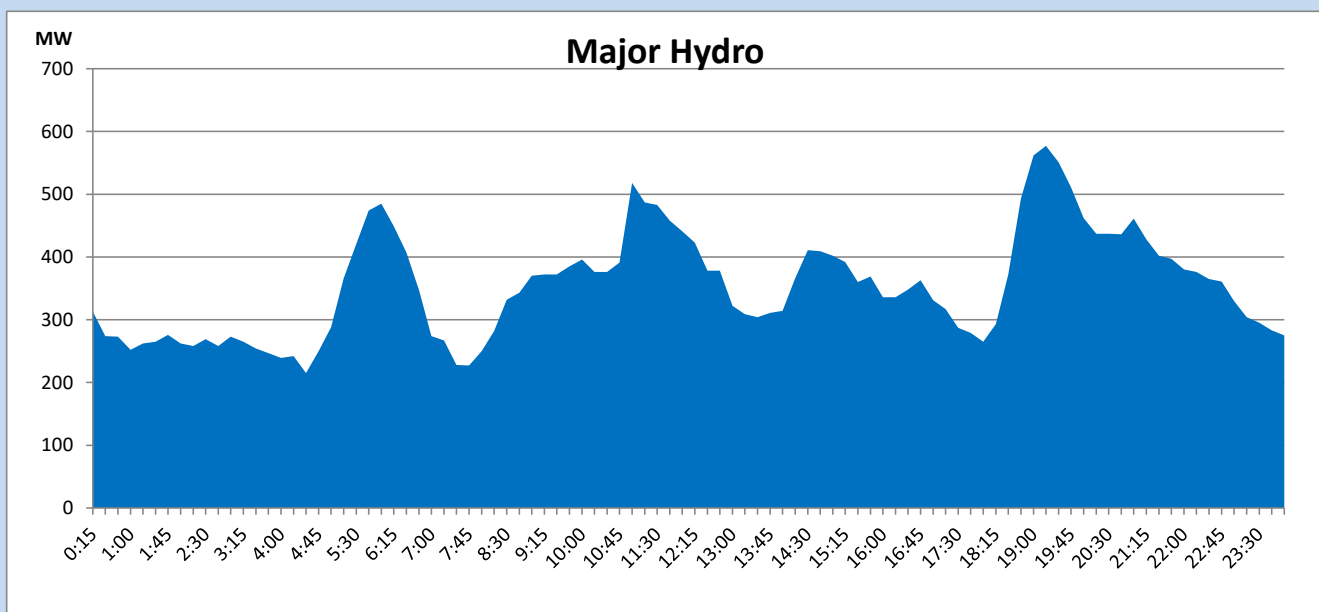
IPP Oil Plant Generation during

June 16, 2023



Major Hydro Generation during

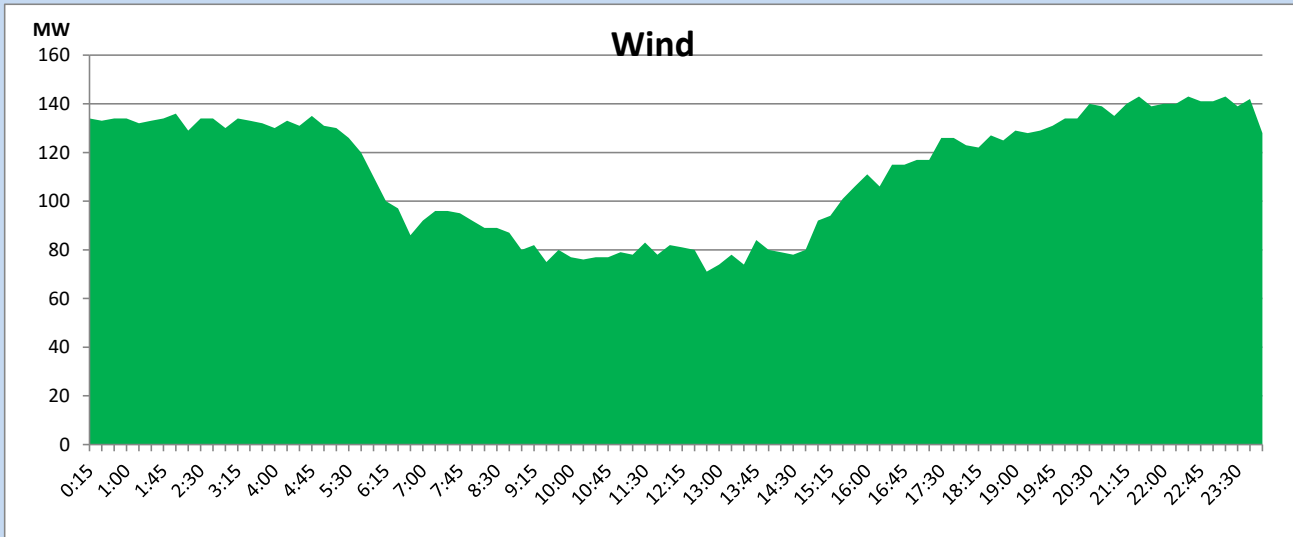
June 16, 2023



Wind Generation during

June 16, 2023

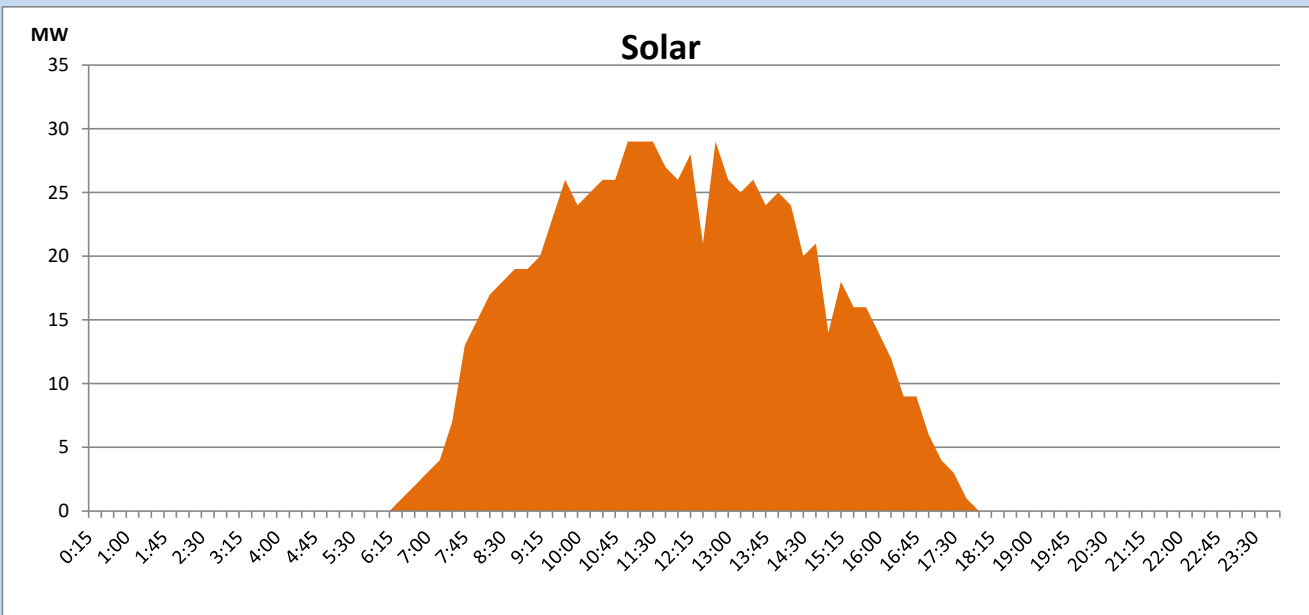
Based on Telemetered Power Stations only



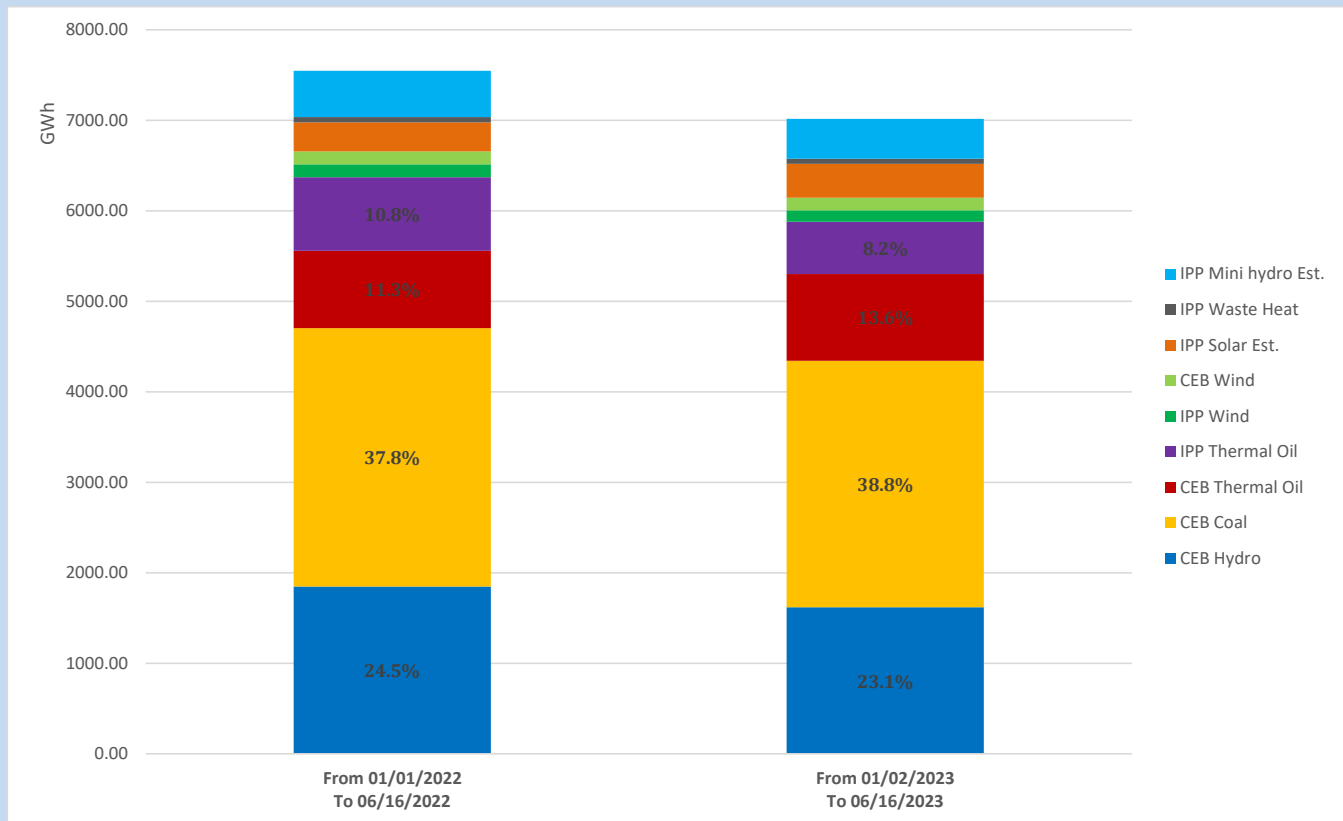
Solar Generation during

June 16, 2023

Based on Telemetered Power Stations only



Cumulative Dispatch Comparison with Last Year



The above figures are including contribution from roof top solar, non telemetered solar and mini hydro plants

Thermal Plant Fuel types

Power Station	Primary Fuel
CEB Thermal	
Sapugaskanda 1	Heavy Fuel
Sapugaskanda 2	Heavy Fuel
Kelanitissa Small Gas Turbines	Auto Diesel
GT 7 - Kelanitissa	Auto Diesel
Kelanitissa CCY	Naphtha or Diesel
Lakvijaya 1	Coal
Lakvijaya 2	Coal
Lakvijaya 3	Coal
Uthuru Janani	Heavy Fuel
Barge CEB	Heavy Fuel
KCCPS -2	Auto Diesel

Power Station	Primary Fuel
Private Thermal	
West Coast	Auto Diesel / Heavy Fuel

Major Incidents reported during the day

June 16, 2023

- 1) KCCPS2 ST tripped at 10:56hrs rejecting 55MW from the system. KCCPS2 ST resumed generation at 11:19hrs.
- 2) LVPS Unit 03 reached 200MW(net) at 16:15hrs. The generation limited to 200MW(net) due to an unavailability of a CW pump.
- 3) Dakunu Janani plant tripped at 16:33hrs rejecting 17MW from the system and the plant resumed generation at 16:50hrs.
- 4) New Galle – Ambalangoda cct 01 tripped and A/R from both ends at 17:48hrs due to the operation of differential protection.
- 5) KPS GT 07 was initially instructed to synchronize at 13:30hrs. After several unsuccessful starting attempts, the plant made unavailable at 18:07hrs due to a flame failure fault. The plant is yet to resume generation.
- 6) LVPS Unit 01 stopped at 00:25hrs(17.06.23) due to the air pre-heater rectification. The unit is yet resume generation.