

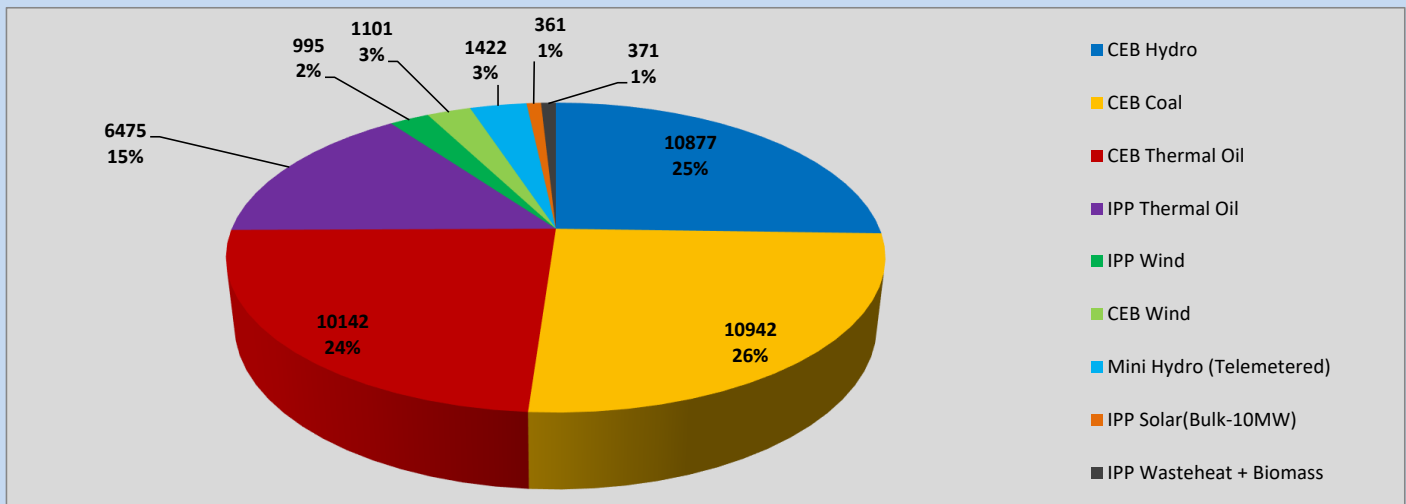
# Generation and Reservoirs Statistics

June 15, 2023



PUBLIC UTILITIES COMMISSION OF SRI LANKA

## Daily Generation Mix in MWh



Total Generation (Excluding estimated figures) =

42,686 MWh

### Estimated figures of CEB generation report

Estimated unserved energy = 0.00 GWh  
 Estimated Mini Hydro (Non telemetered) = 2658 MWh  
 Estimated IPP Solar PV (Bulk 1-10MW) = 304 MWh  
 Estimated Solar Roof Top PV = 1890 MWh

## Cumulative Dispatch

Following data excludes the contribution from roof top solar, non telemetered solar and mini hydro plants

### For Current Month

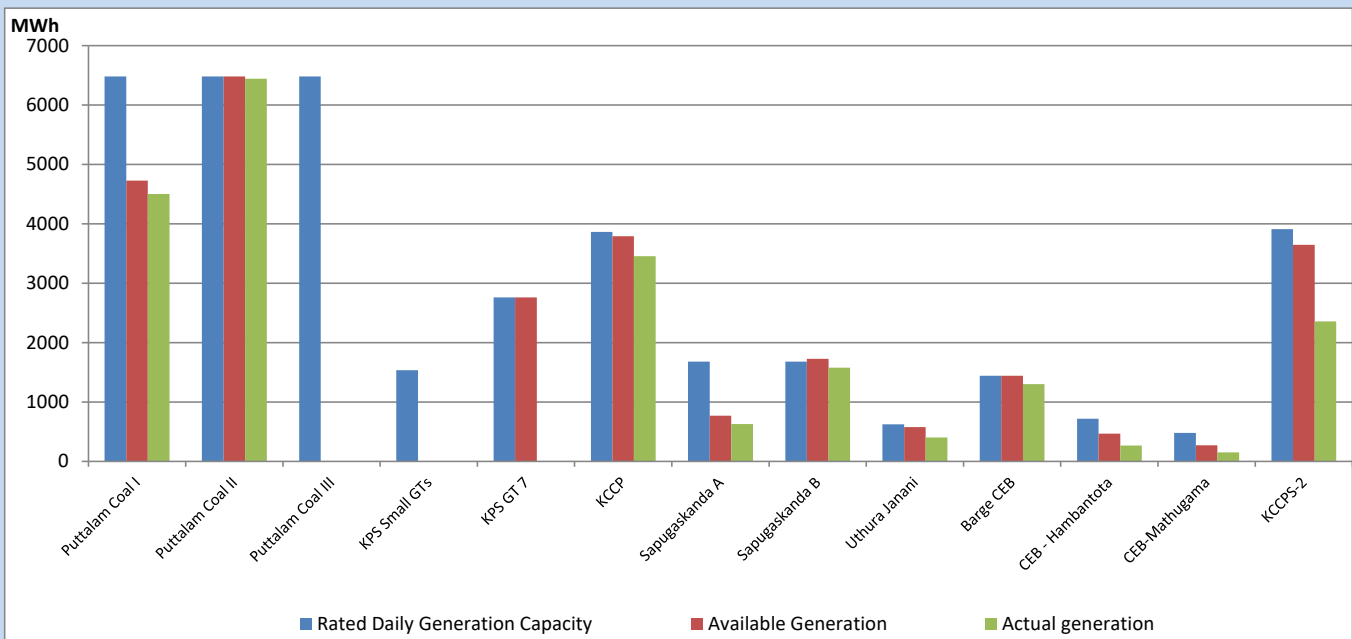
Category	Dispatch (GWh)	
CEB Hydro	133	22.31%
CEB Coal	218	36.52%
CEB Thermal Oil	101	16.94%
IPP Thermal	54	9.09%
SPP Wind	30	5.08%
CEB Wind	27	4.52%
Mini Hydro (Telemetered)	21	3.57%
IPP Solar (Bulk-10MW)	5	0.90%
IPP Wasteheat + BMP	6	1.07%
<b>Total</b>	<b>598</b>	

### For Current Year

Category	Dispatch (GWh)	
CEB Hydro	1,614	25.39%
CEB Coal	2,713	42.69%
CEB Thermal Oil	949	14.92%
IPP Thermal	571	8.99%
SPP Wind	121	1.90%
CEB Wind	138	2.17%
Mini Hydro (Telemetered)	147	2.32%
IPP Solar (Bulk-10MW)	49	0.76%
IPP Wasteheat	54	0.84%
<b>Total</b>	<b>6,356</b>	

## CEB owned Thermal Plant Dispatch

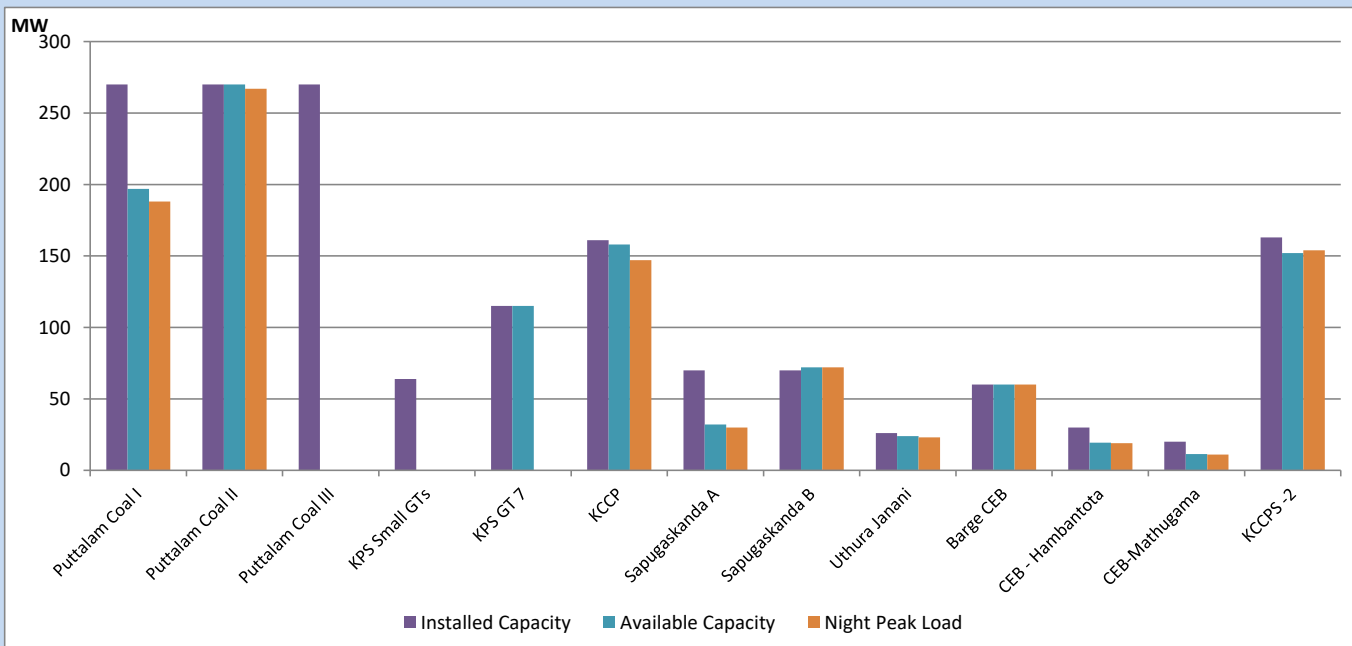
June 15, 2023



Available Generation is estimated based on plant availability at 6.00am on

June 16, 2023

## CEB owned Thermal Plant Loading at the Night Peak



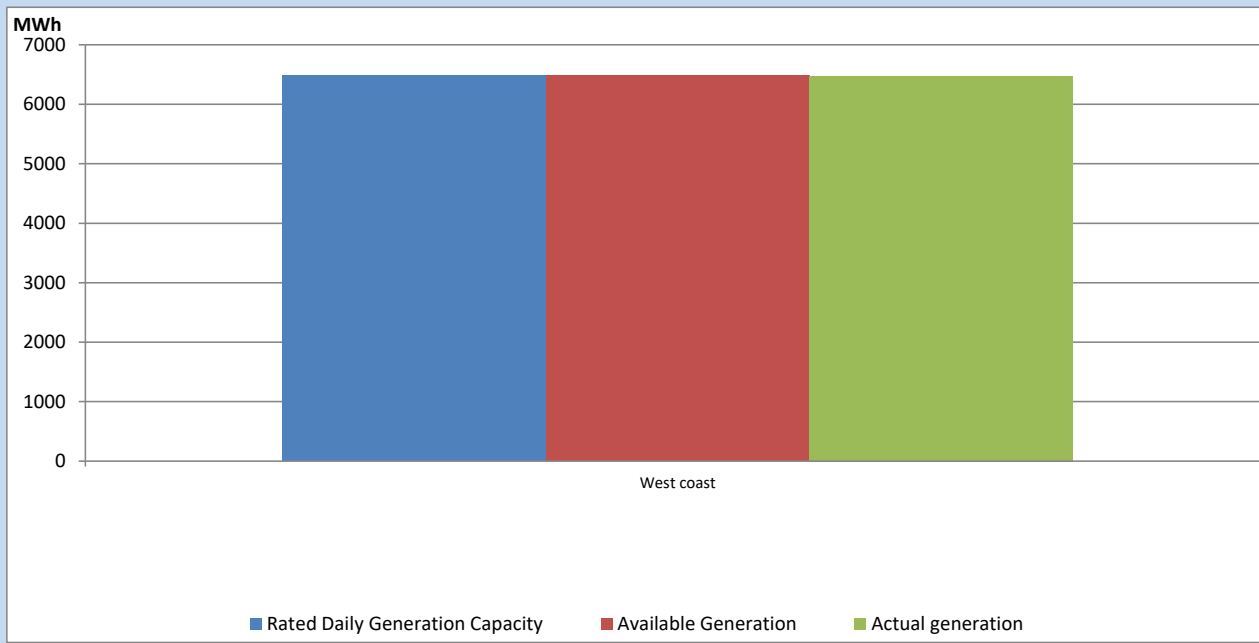
Note-

Plant availability is recorded at 6.00 am on

June 16, 2023

## IPP owned Thermal Plant Dispatch

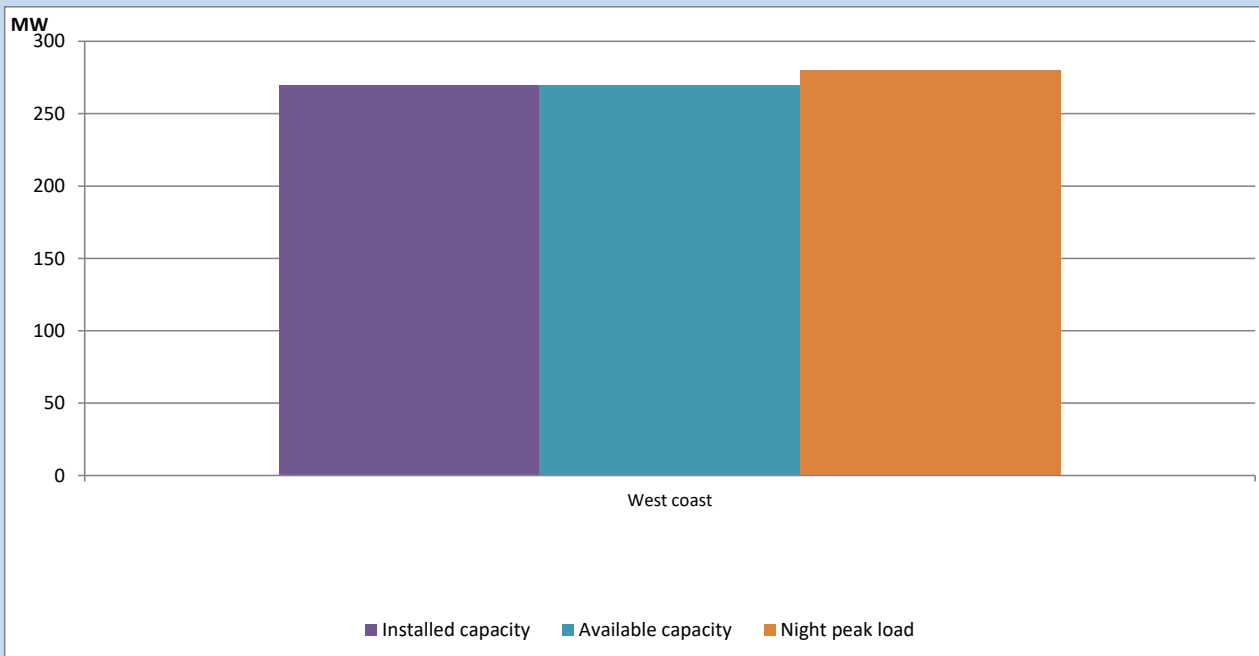
June 15, 2023



Available Generation is estimated based on plant availability at 6.00am on

June 16, 2023

## IPP owned Thermal Plant Loading at the Night Peak

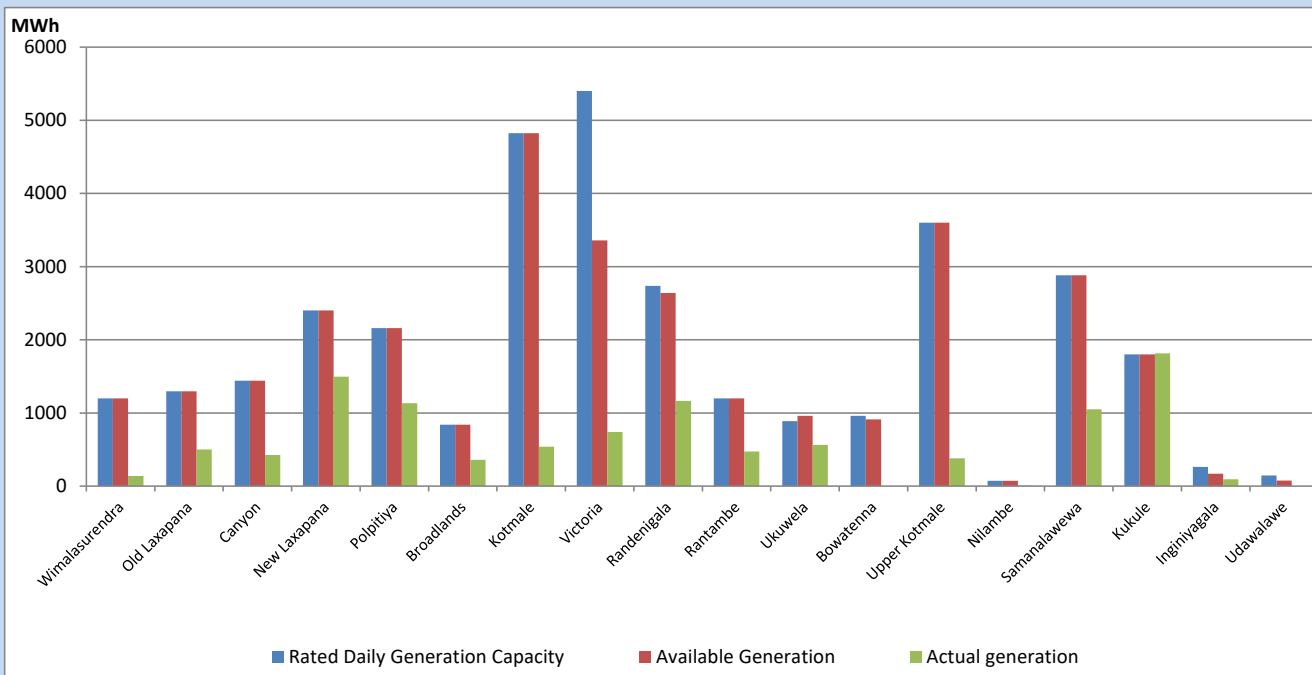


Note- Plant availability is recorded at 6.00 am on

June 16, 2023

## Major Hydro Plant Dispatch

June 15, 2023

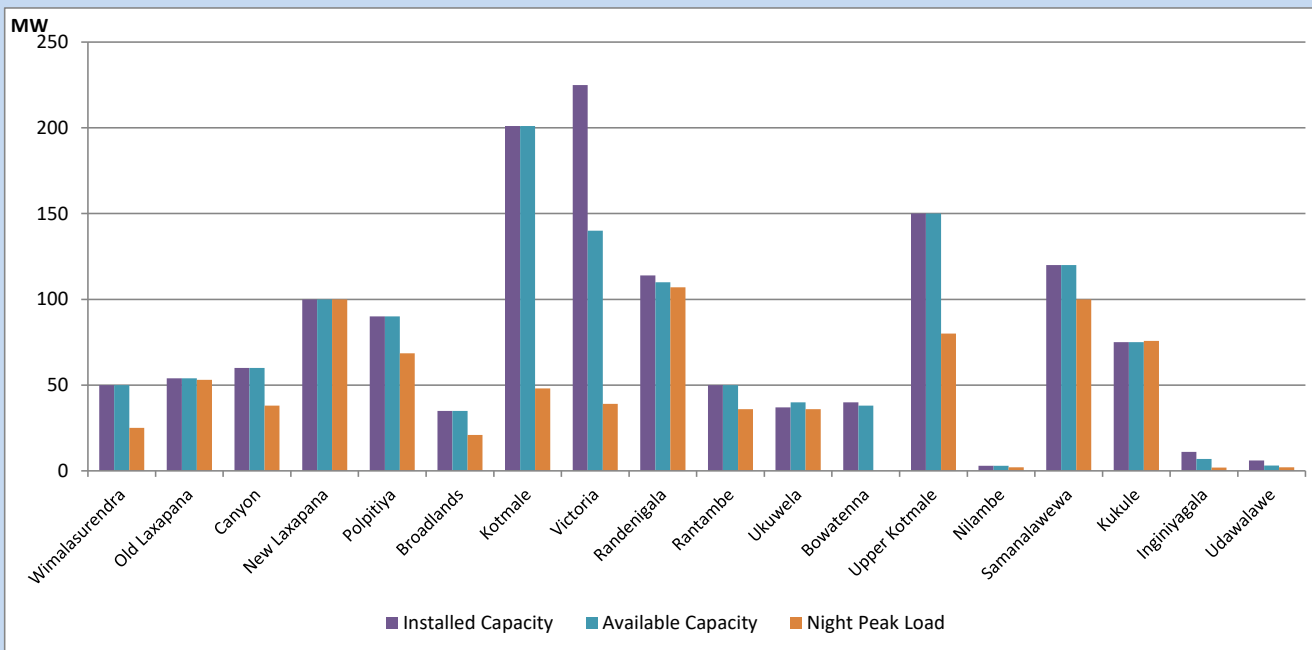


Available Generation is estimated based on plant availability at 6.00am on  
Broadlands power plant is operating in the Commissioning Stage

June 16, 2023

## Major Hydro Plant Loading at Night Peak

June 15, 2023



Note- Plant availability is recorded at 6.00 am on  
Broadlands power plant is operating in the Commissioning Stage

June 16, 2023

## Summary of Major Plant performance

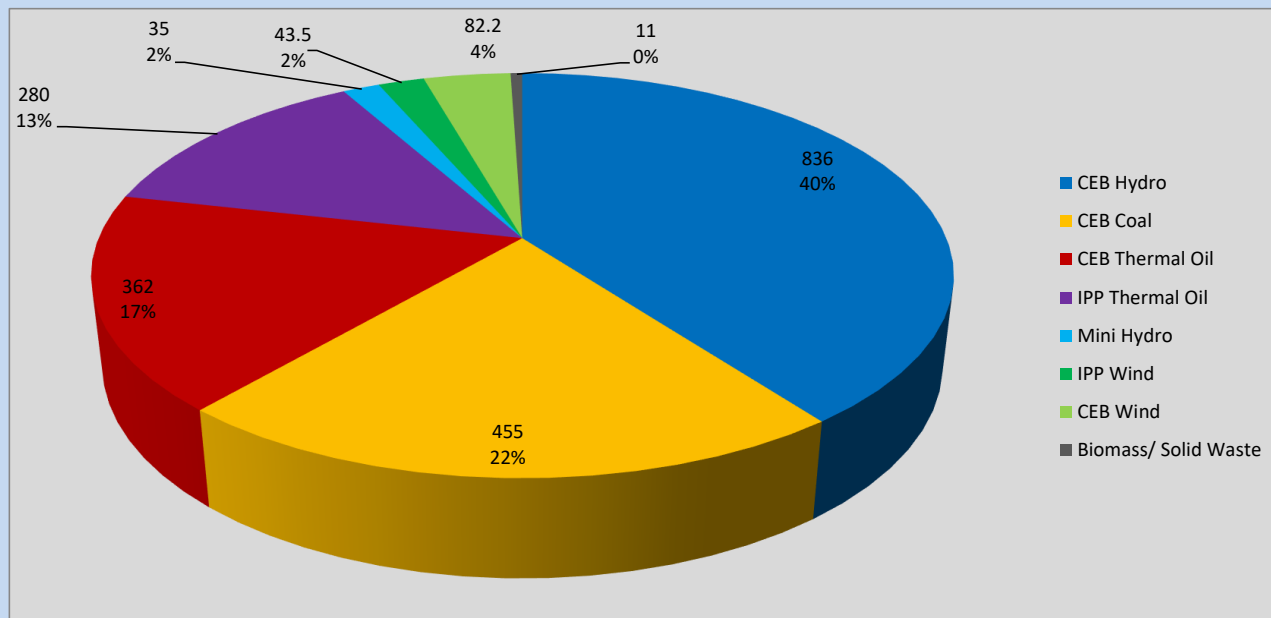
Plant	Installed Capacity	Plant Availability	Night peak Load	Plant Dispatch
	(MW)	(MW)	(MW)	(MWh)
Wimalasurendra	50	50	25	137
Old Laxapana	54	54	53	500
Canyon	60	60	38	426
New Laxapana	100	100	100	1,496
Polpitiya	90	90	69	1,134
Broadlands	35	35	21	358
Kotmale	201	201	48	540
Victoria	225	140	39	741
Randenigala	114	110	107	1,164
Rantambe	50	50	36	475
Ukuwela	37	40	36	563
Bowatenna	40	38	0	0
Upper Kotmale	150	150	80	379
Nilambe	3	3	2	6
Samanalawewa	120	120	100	1,051
Kukule	75	75	76	1,813
Inginiyagala	11	7	2	94
Udawalawe	6	3	2	0
Puttalam Coal I	270	197	188	4,501
Puttalam Coal II	270	270	267	6,441
Puttalam Coal III	270	0	0	0
KPS Small GTs	64	0	0	0
KPS GT 7	115	115	0	0
KCCP	161	158	147	3,454
Sapugaskanda A	70	32	30	627
Sapugaskanda B	70	72	72	1,576
Uthura Janani	26	24	23	403
Barge CEB	60	60	60	1,303
CEB-Hambantota	30	19	19	267
CEB-Mathugama	20	11	11	154
ACE Matara	24	0	0	0
Asia Power	50	0	0	0
KCCPS -2	163	152	154	2,358
West Coast	270	270	280	6,475
Nothern Power	36	0	0	0
ACE Embilipitiya	93	0	0	0
<b>Total</b>	<b>3,483</b>	<b>2,707</b>	<b>2,256</b>	<b>42,686</b>

Plant availability is the availability recorded at 6 am on

June 16, 2023

## Contribution to the Night Peak in MW

June 15, 2023

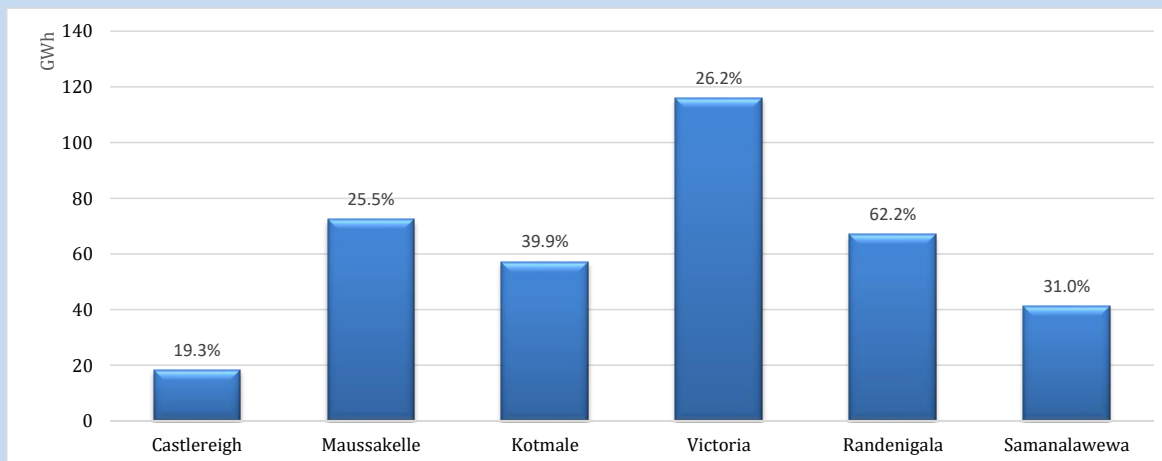


Night Peak*	2,259 MW
Day Peak Maximum Demand	2,018 MW
Day Peak Minimum Demand	1,756 MW
Off Peak Minimum Demand	1,308 MW

Above figures are excluding contribution from roof top solar, non telemetered solar and mini hydro plants

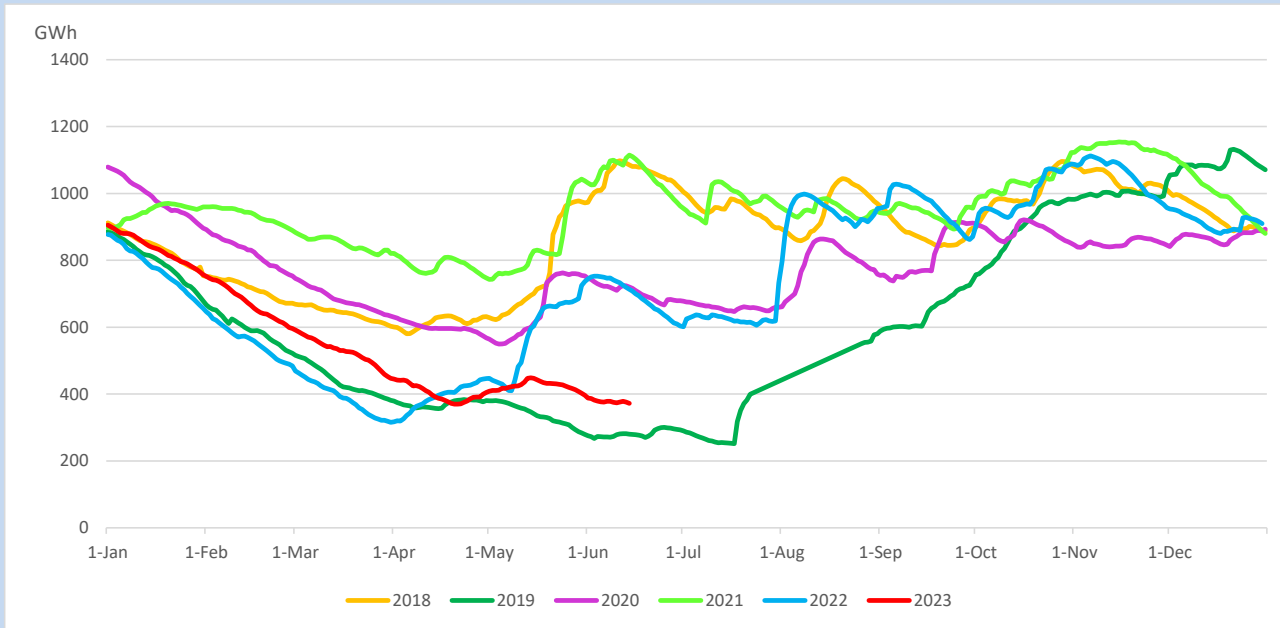
## Reservoir Levels -

as at 06.00 Hr on June 16, 2023

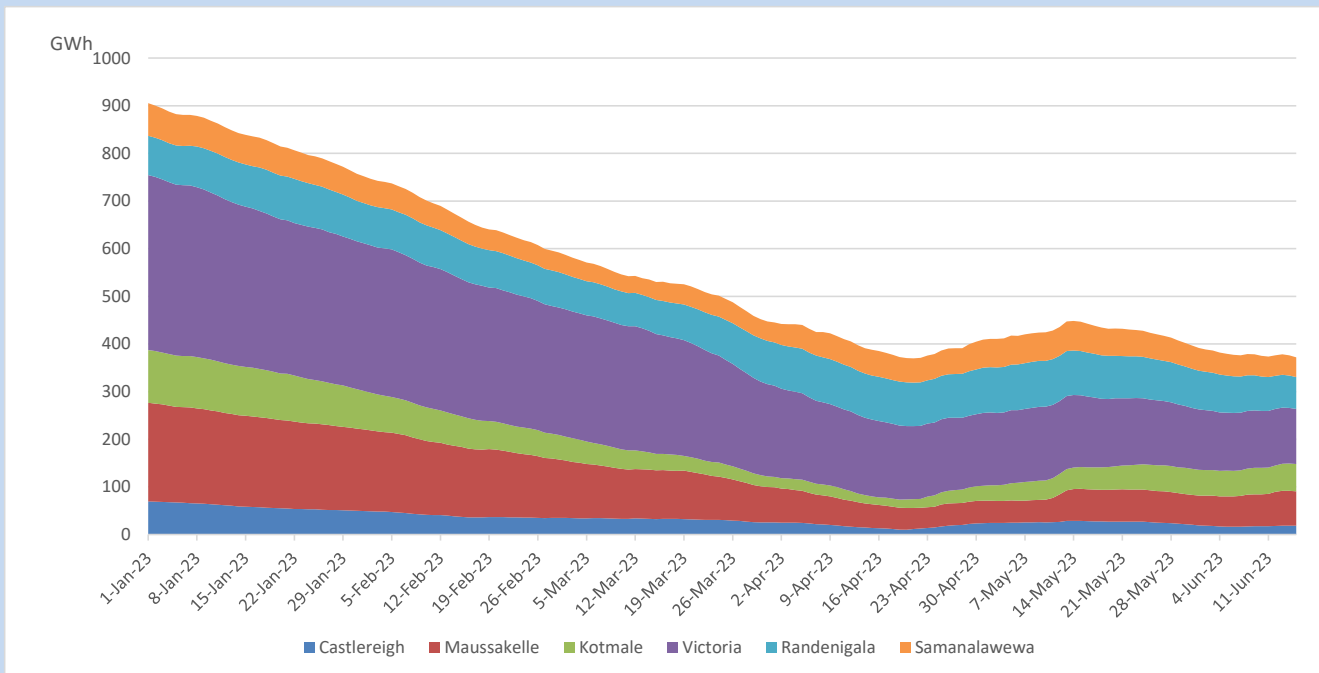


Total Reservoir Level	372 GWh
% of Total capacity	30.9%

## Comparison of Total Reservoir Storage Levels with Past Years

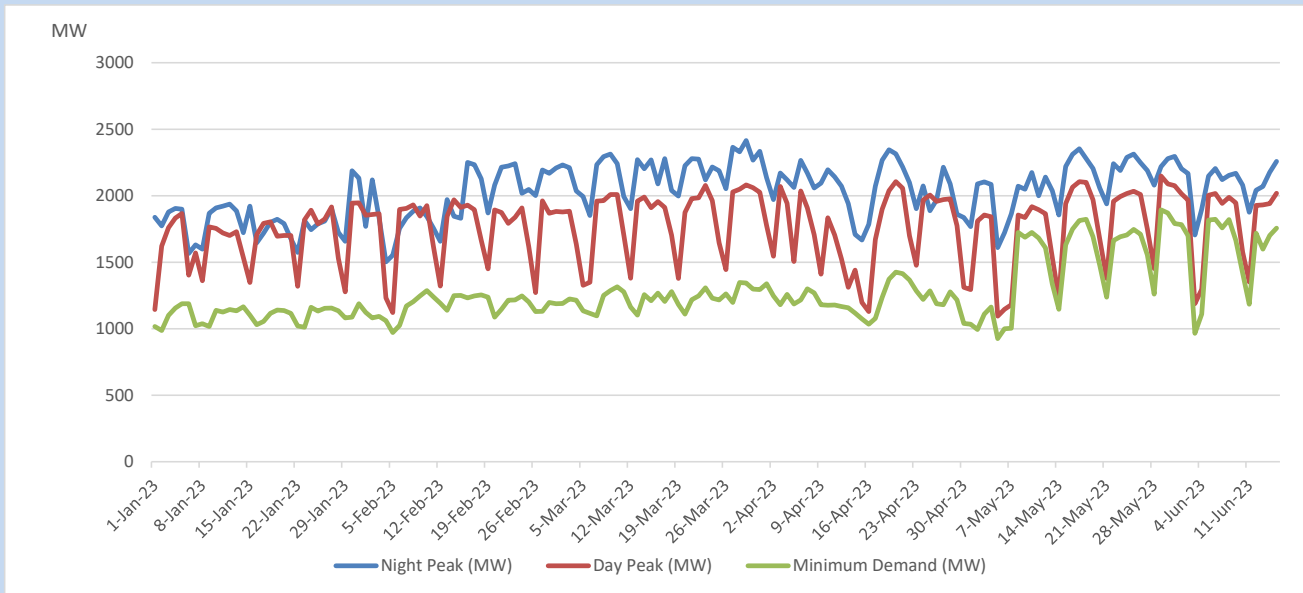


## Variation of Major Hydro Reservoir Levels in the current year (GWh)





## Variation of Demand during the current year

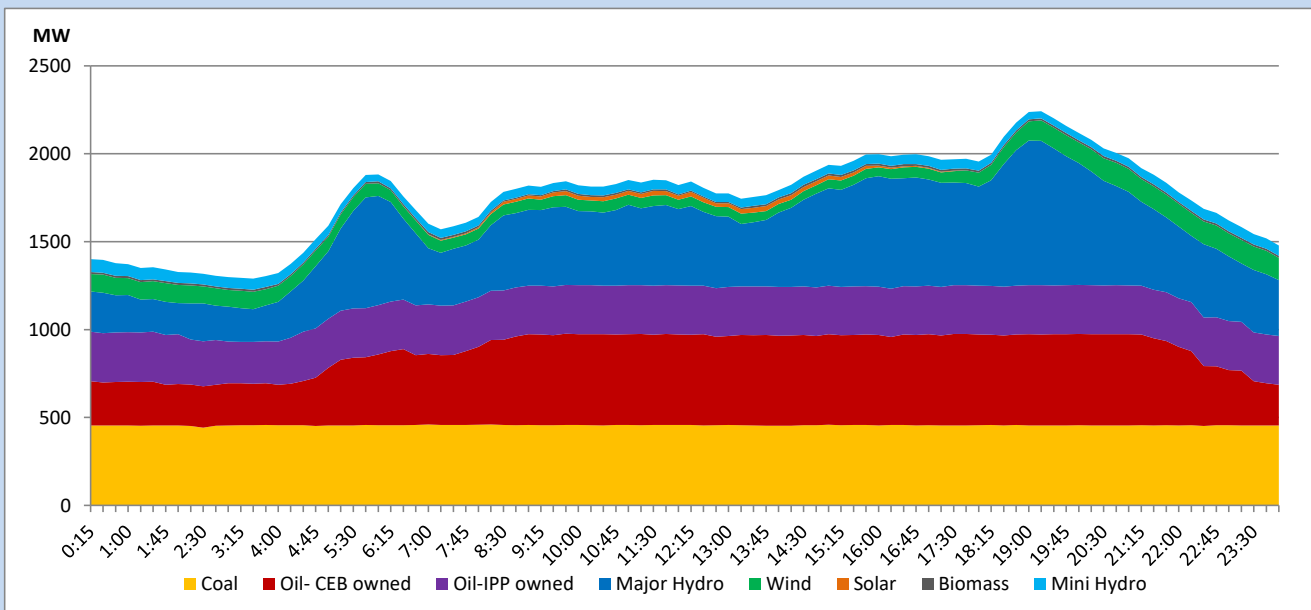


The above figures are excluding contribution from roof top solar, non telemetered solar and mini hydro plants

## Daily Load Curve

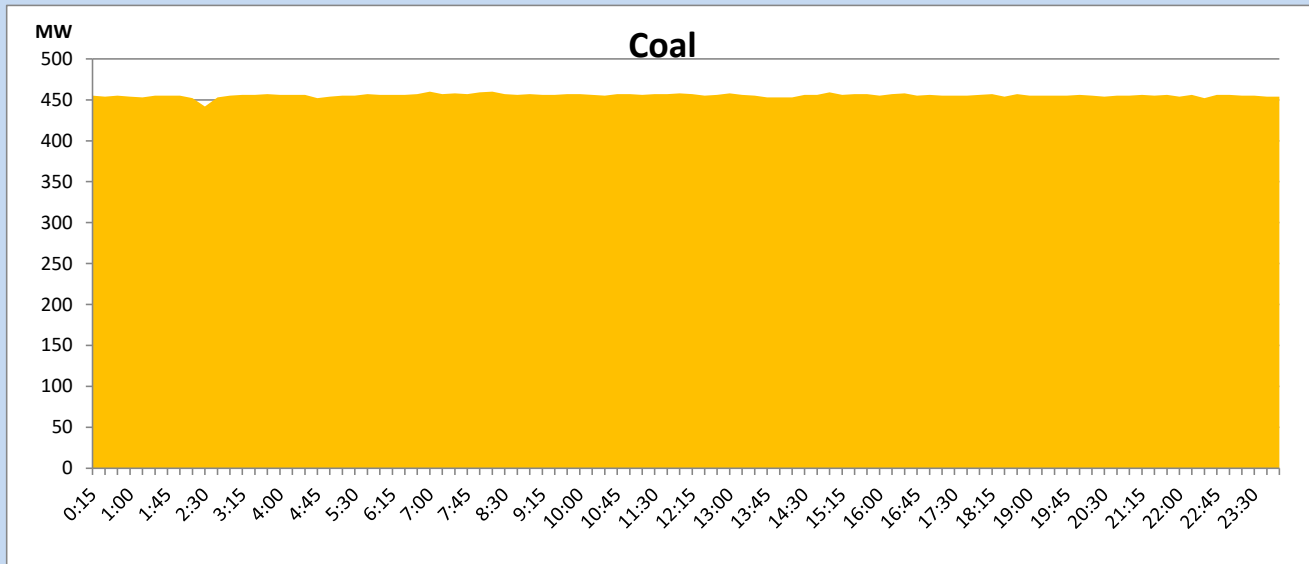
June 15, 2023

Solar and wind data is based on Telemetered Power Stations only



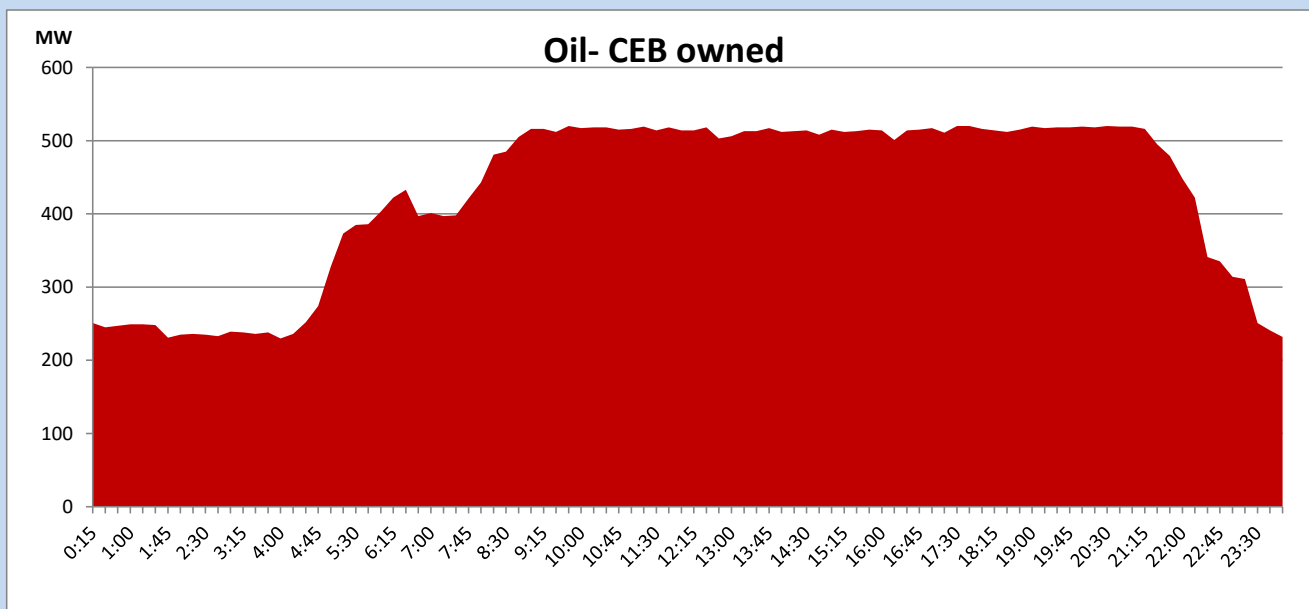
## Coal Generation during

June 15, 2023



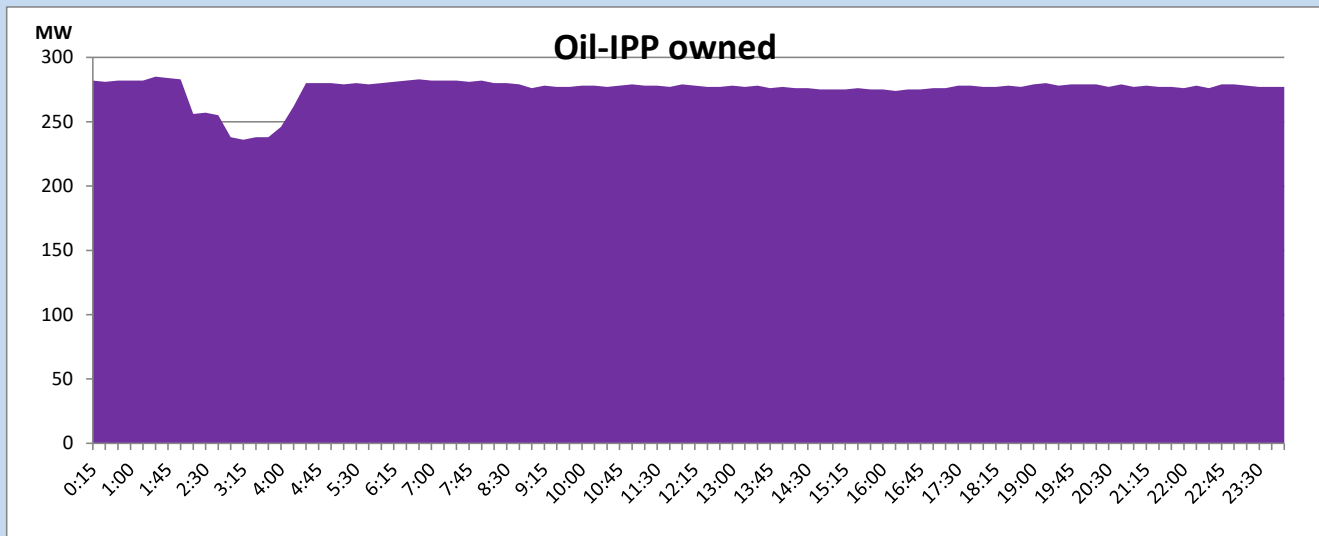
## CEB Oil Plant Generation during

June 15, 2023



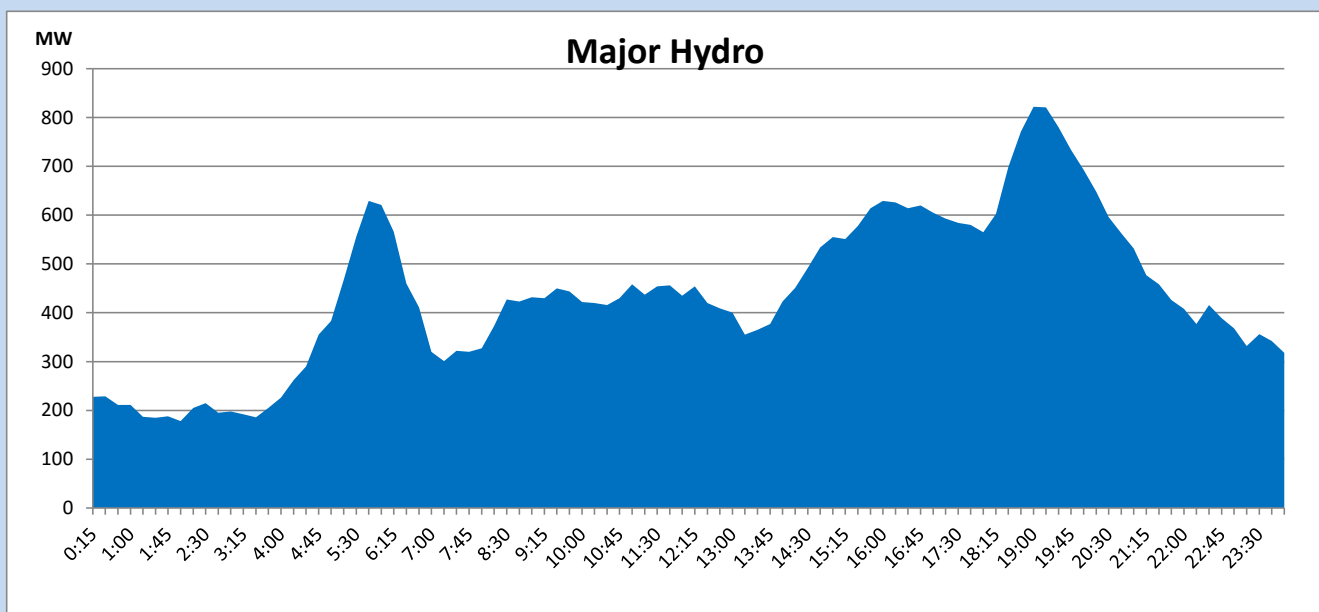
## IPP Oil Plant Generation during

June 15, 2023



## Major Hydro Generation during

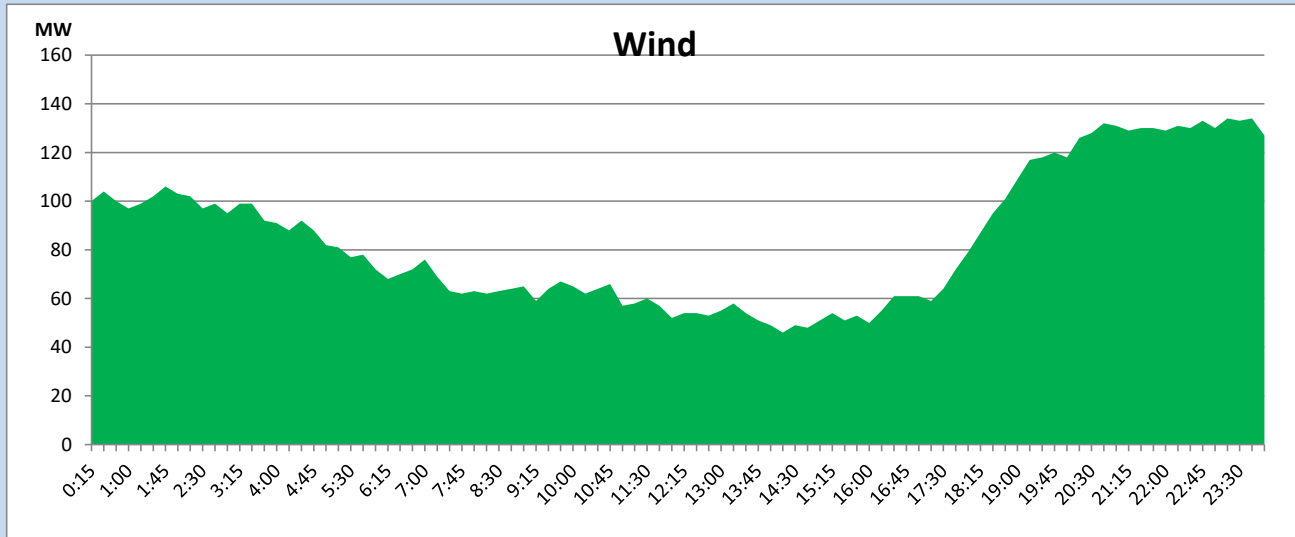
June 15, 2023



## Wind Generation during

June 15, 2023

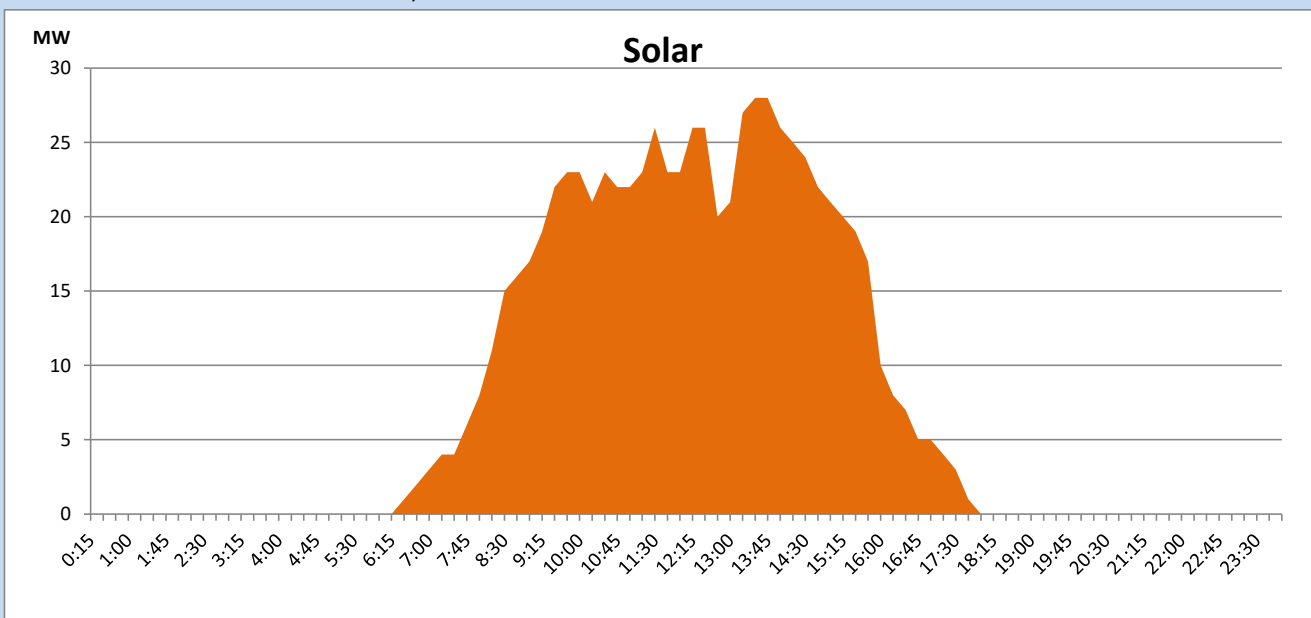
Based on Telemetered Power Stations only



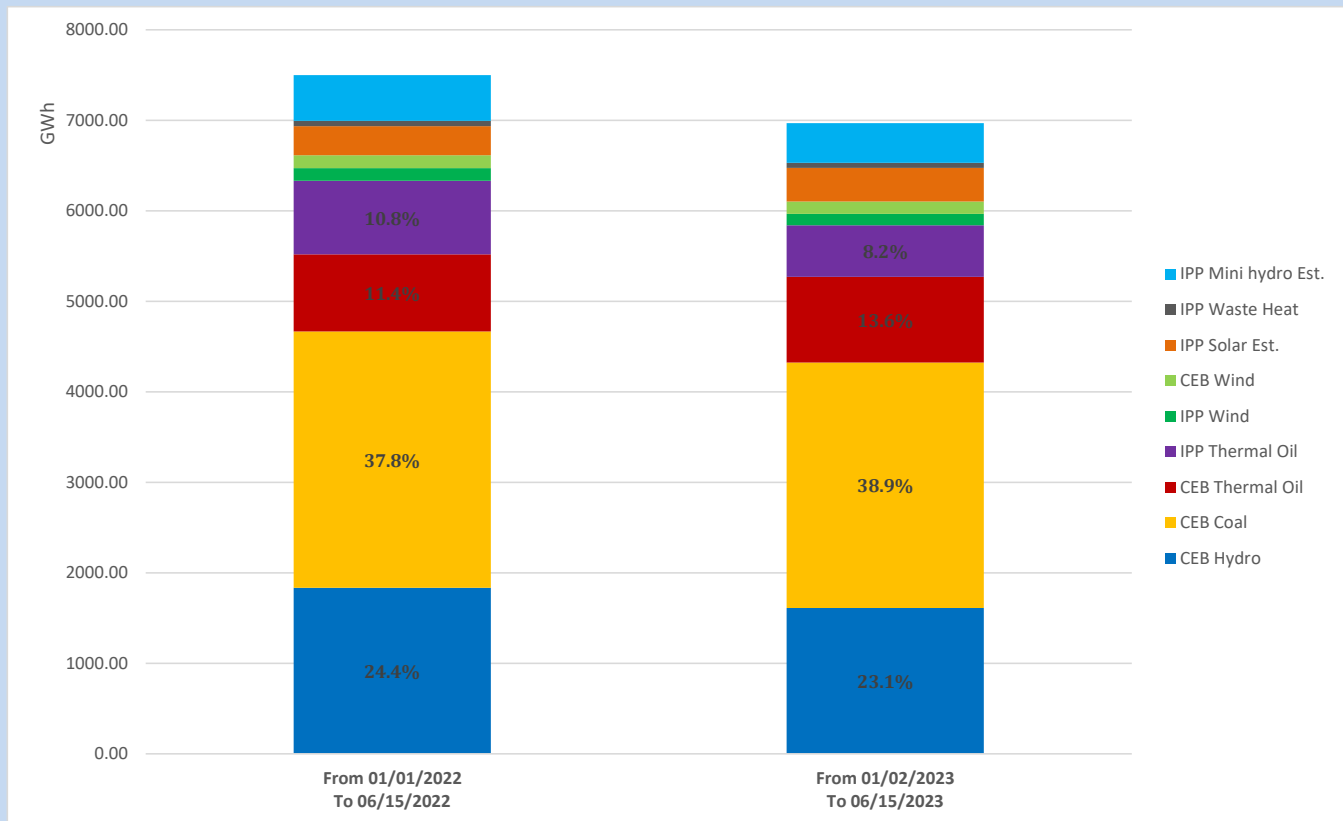
## Solar Generation during

June 15, 2023

Based on Telemetered Power Stations only



## Cumulative Dispatch Comparison with Last Year



The above figures are including contribution from roof top solar, non telemetered solar and mini hydro plants

### Thermal Plant Fuel types

Power Station	Primary Fuel
CEB Thermal	
Sapugaskanda 1	Heavy Fuel
Sapugaskanda 2	Heavy Fuel
Kelanitissa Small Gas Turbines	Auto Diesel
GT 7 - Kelanitissa	Auto Diesel
Kelanitissa CCY	Naphtha or Diesel
Lakvijaya 1	Coal
Lakvijaya 2	Coal
Lakvijaya 3	Coal
Uthuru Janani	Heavy Fuel
Barge CEB	Heavy Fuel
KCCPS -2	Auto Diesel

Power Station	Primary Fuel
Private Thermal	
West Coast	Auto Diesel / Heavy Fuel

### Major Incidents reported during the day

June 15, 2023

01) KPS GT 07 made available at 00:31hrs (16.06.2023).