

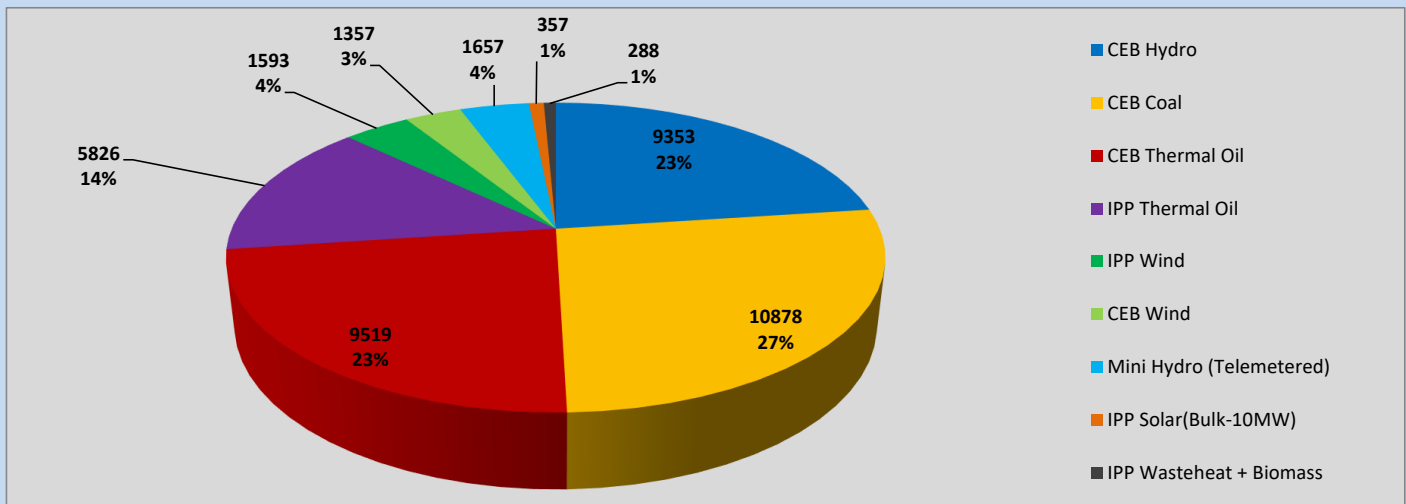
Generation and Reservoirs Statistics

June 14, 2023



PUBLIC UTILITIES COMMISSION OF SRI LANKA

Daily Generation Mix in MWh



Total Generation (Excluding estimated figures) =

40,828 MWh

Estimated figures of CEB generation report

Estimated unserved energy = 0.00 GWh
 Estimated Mini Hydro (Non telemetered) = 2423 MWh
 Estimated IPP Solar PV (Bulk 1-10MW) = 304 MWh
 Estimated Solar Roof Top PV = 1890 MWh

Cumulative Dispatch

Following data excludes the contribution from roof top solar, non telemetered solar and mini hydro plants

For Current Month

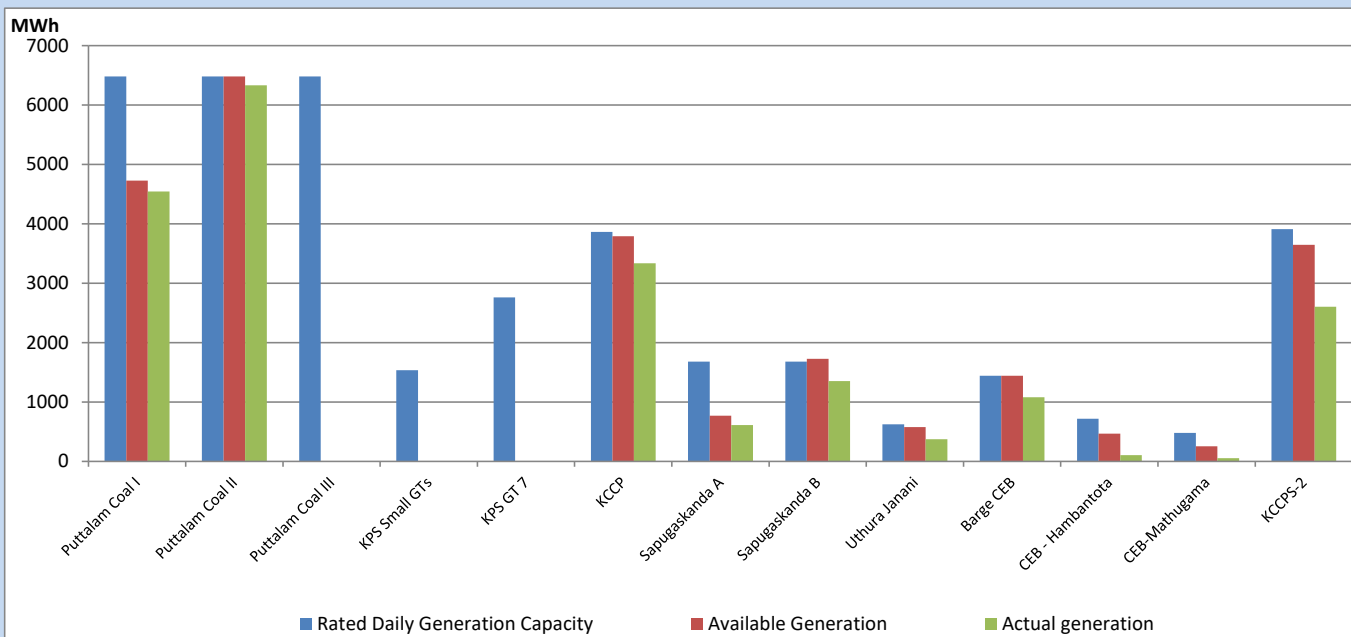
Category	Dispatch (GWh)	
CEB Hydro	123	22.06%
CEB Coal	208	37.36%
CEB Thermal Oil	91	16.41%
IPP Thermal	48	8.62%
SPP Wind	29	5.29%
CEB Wind	26	4.67%
Mini Hydro (Telemetered)	20	3.58%
IPP Solar (Bulk-10MW)	5	0.91%
IPP Wasteheat + BMP	6	1.09%
Total	556	

For Current Year

Category	Dispatch (GWh)	
CEB Hydro	1,603	25.39%
CEB Coal	2,702	42.80%
CEB Thermal Oil	939	14.87%
IPP Thermal	565	8.95%
SPP Wind	120	1.90%
CEB Wind	137	2.17%
Mini Hydro (Telemetered)	146	2.31%
IPP Solar (Bulk-10MW)	48	0.76%
IPP Wasteheat	53	0.84%
Total	6,313	

CEB owned Thermal Plant Dispatch

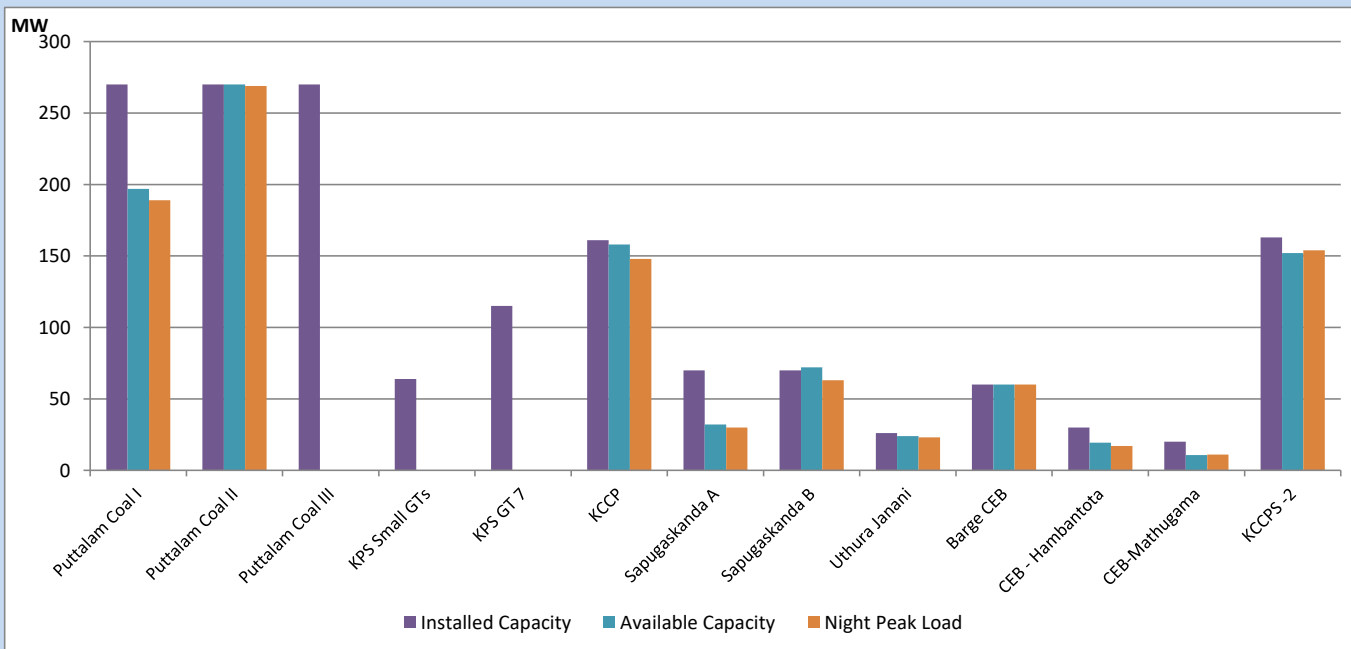
June 14, 2023



Available Generation is estimated based on plant availability at 6.00am on

June 15, 2023

CEB owned Thermal Plant Loading at the Night Peak



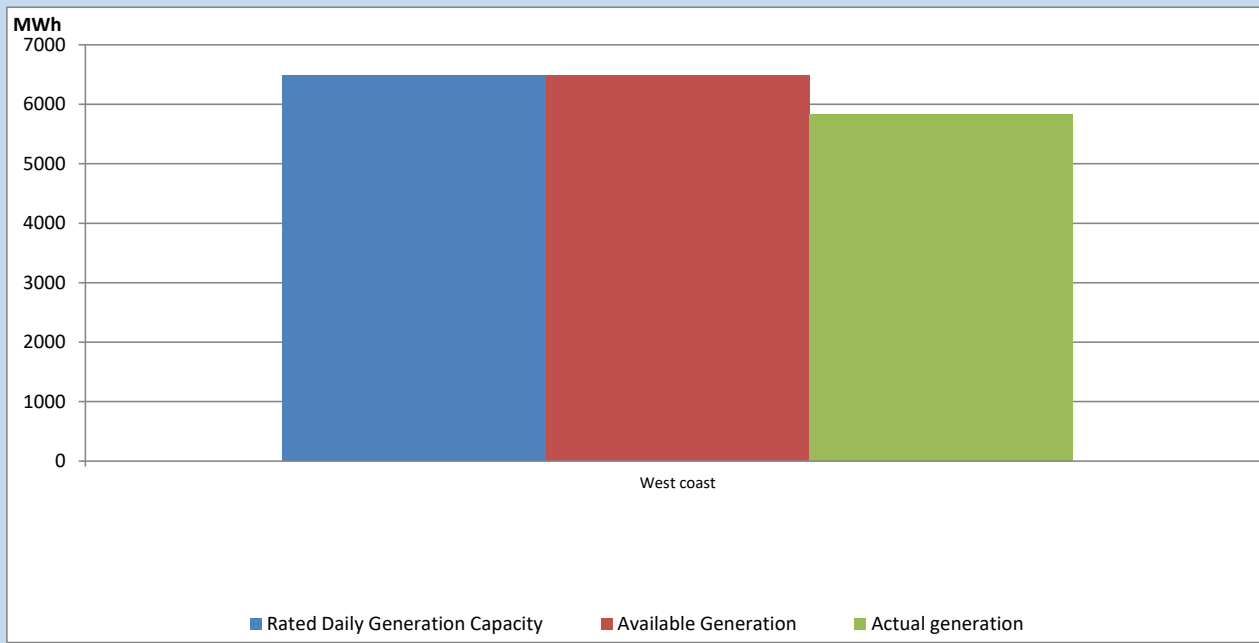
Note-

Plant availability is recorded at 6.00 am on

June 15, 2023

IPP owned Thermal Plant Dispatch

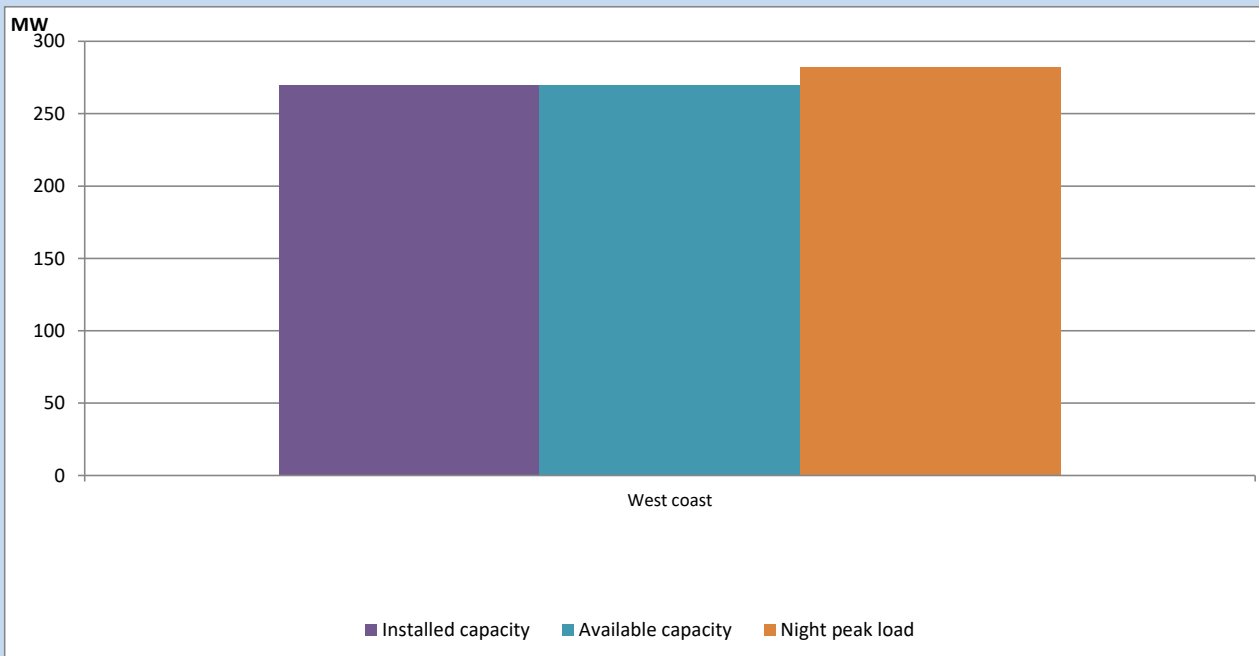
June 14, 2023



Available Generation is estimated based on plant availability at 6.00am on

June 15, 2023

IPP owned Thermal Plant Loading at the Night Peak

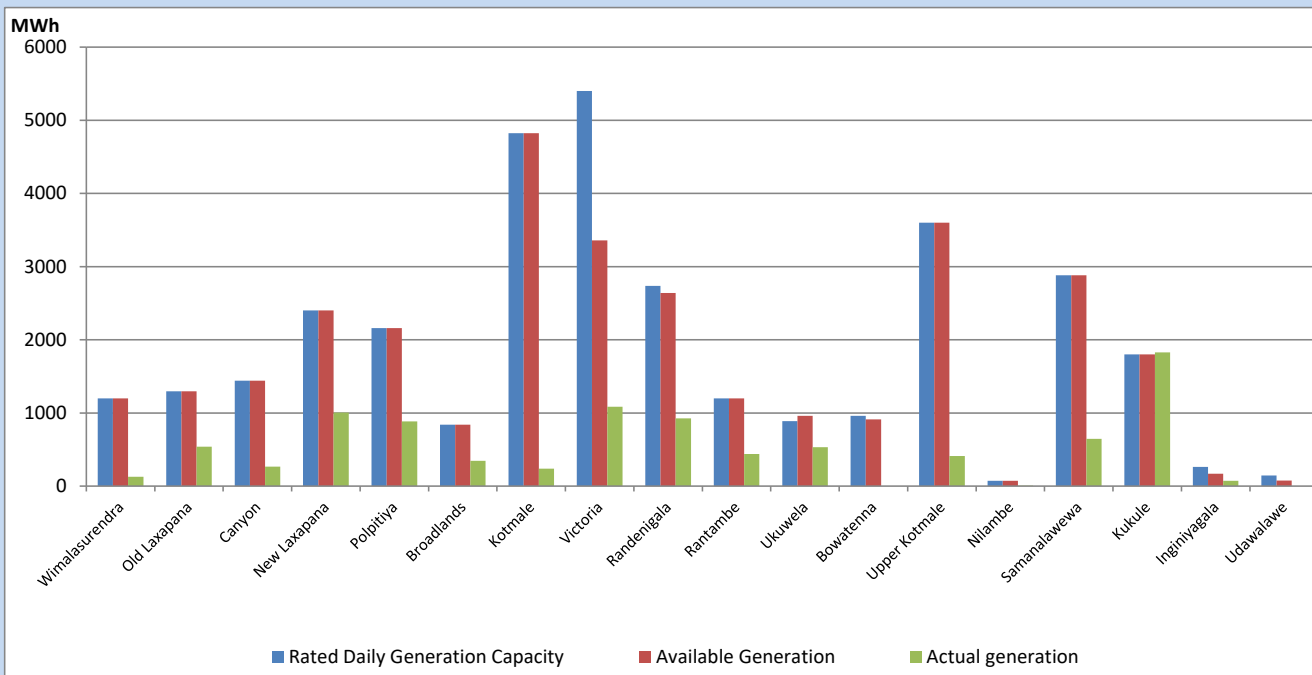


Note- Plant availability is recorded at 6.00 am on

June 15, 2023

Major Hydro Plant Dispatch

June 14, 2023

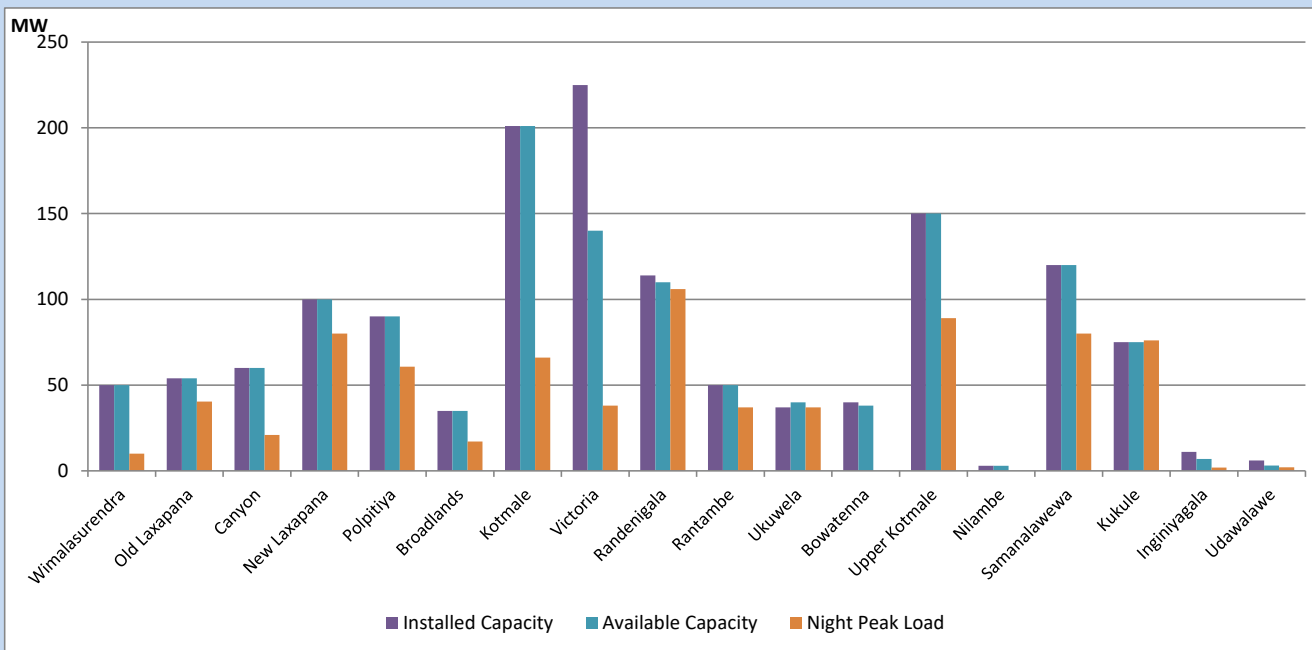


Available Generation is estimated based on plant availability at 6.00am on
Broadlands power plant is operating in the Commissioning Stage

June 15, 2023

Major Hydro Plant Loading at Night Peak

June 14, 2023



Note- Plant availability is recorded at 6.00 am on June 15, 2023

Broadlands power plant is operating in the Commissioning Stage

Summary of Major Plant performance

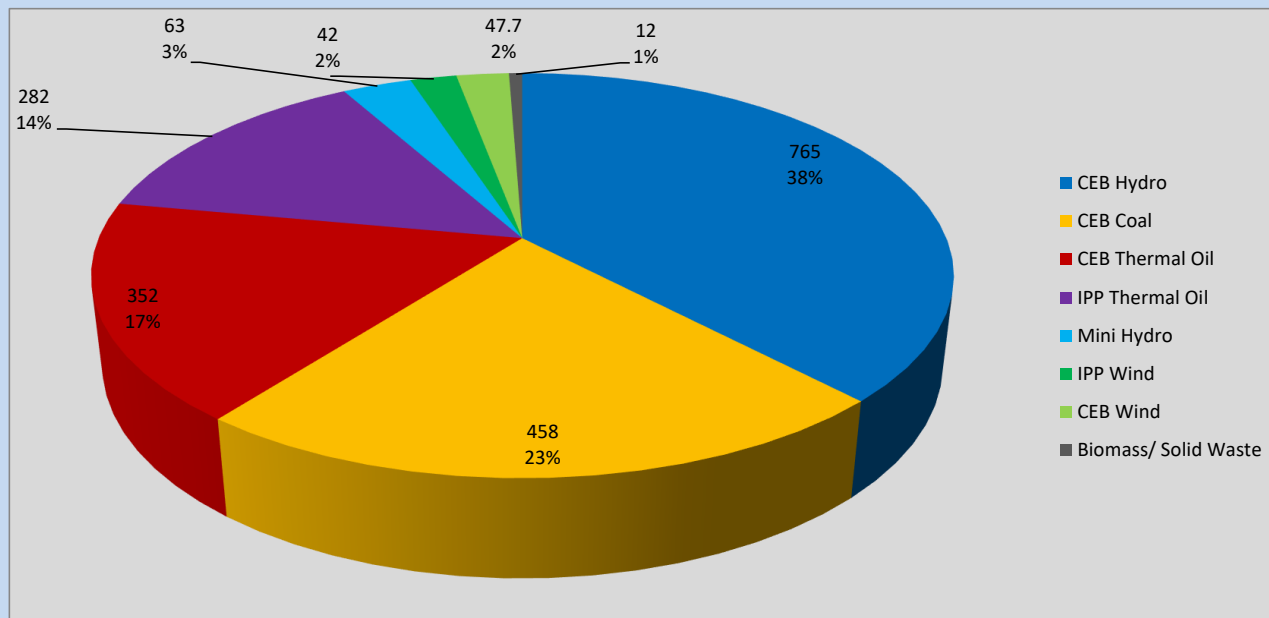
Plant	Installed Capacity	Plant Availability	Night peak Load	Plant Dispatch
	(MW)	(MW)	(MW)	(MWh)
Wimalasurendra	50	50	10	128
Old Laxapana	54	54	40	539
Canyon	60	60	21	266
New Laxapana	100	100	80	1,006
Polpitiya	90	90	61	884
Broadlands	35	35	17	347
Kotmale	201	201	66	240
Victoria	225	140	38	1,084
Randenigala	114	110	106	926
Rantambe	50	50	37	440
Ukuwela	37	40	37	531
Bowatenna	40	38	0	0
Upper Kotmale	150	150	89	411
Nilambe	3	3	0	6
Samanalawewa	120	120	80	645
Kukule	75	75	76	1,828
Inginiyagala	11	7	2	72
Udawalawe	6	3	2	0
Puttalam Coal I	270	197	189	4,546
Puttalam Coal II	270	270	269	6,332
Puttalam Coal III	270	0	0	0
KPS Small GTs	64	0	0	0
KPS GT 7	115	0	0	0
KCCP	161	158	148	3,337
Sapugaskanda A	70	32	30	612
Sapugaskanda B	70	72	63	1,352
Uthura Janani	26	24	23	373
Barge CEB	60	60	60	1,079
CEB-Hambantota	30	19	17	106
CEB-Mathugama	20	11	11	56
ACE Matara	24	0	0	0
Asia Power	50	0	0	0
KCCPS -2	163	152	154	2,604
West Coast	270	270	282	5,826
Nothern Power	36	0	0	0
ACE Embilipitiya	93	0	0	0
Total	3,483	2,591	2,173	40,828

Plant availability is the availability recorded at 6 am on

June 15, 2023

Contribution to the Night Peak in MW

June 14, 2023

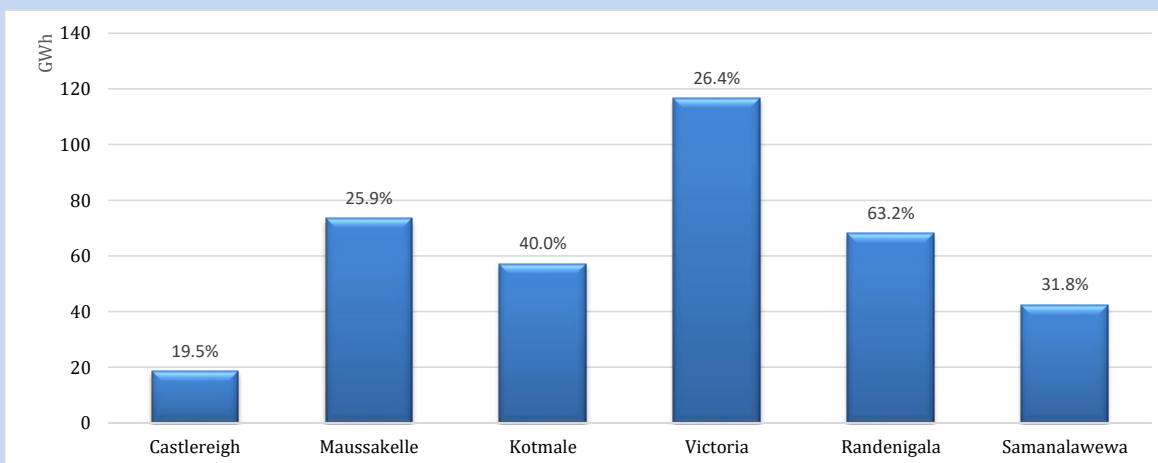


Night Peak*	2,176 MW
Day Peak Maximum Demand	1,941 MW
Day Peak Minimum Demand	1,701 MW
Off Peak Minimum Demand	1,184 MW

Above figures are excluding contribution from roof top solar, non telemetered solar and mini hydro plants

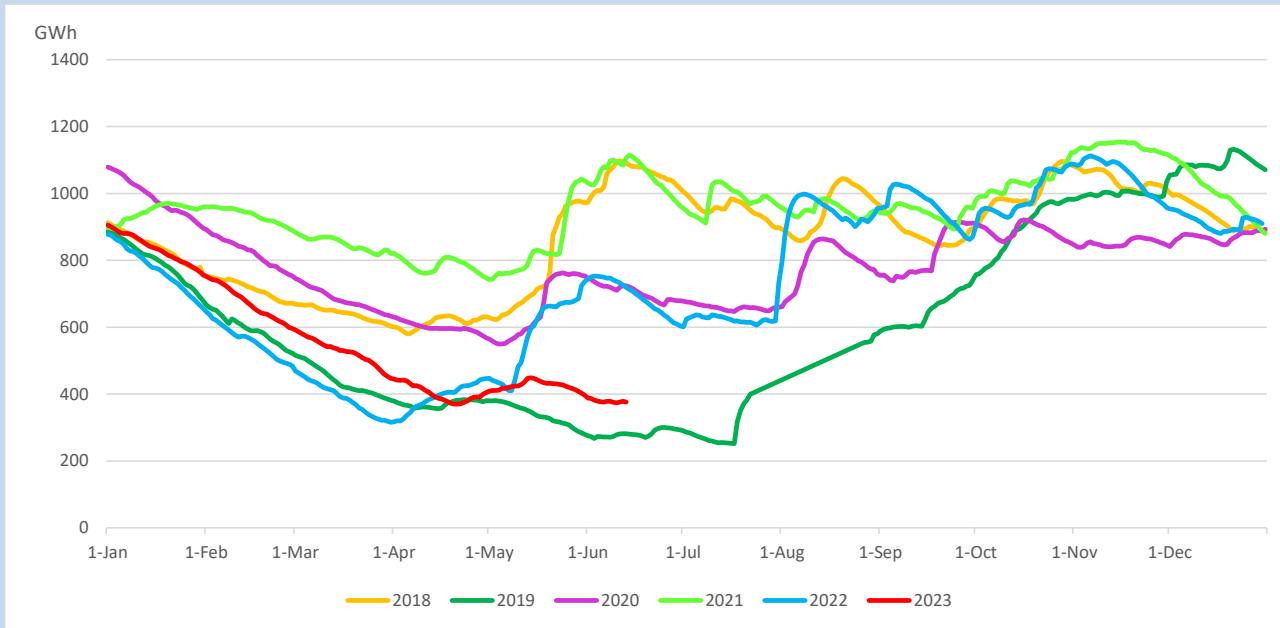
Reservoir Levels -

as at 06.00 Hr on June 15, 2023

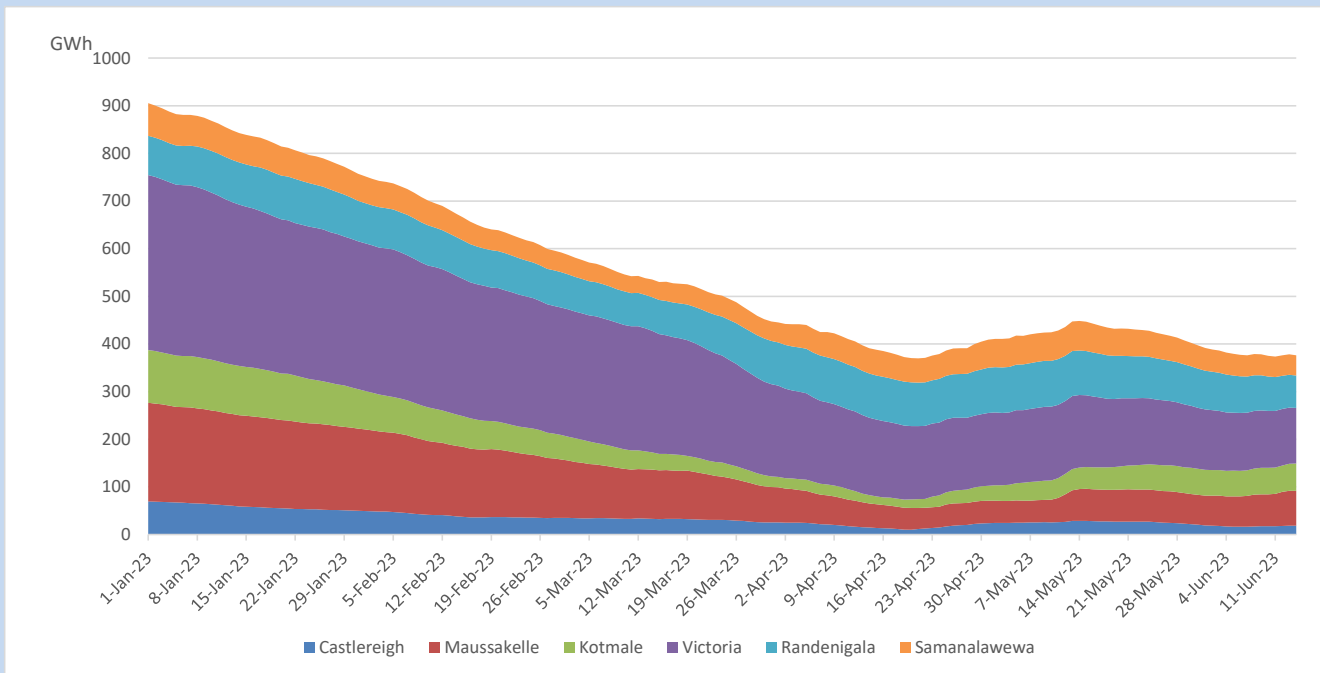


Total Reservoir Level	376.3 GWh
% of Total capacity	31.2%

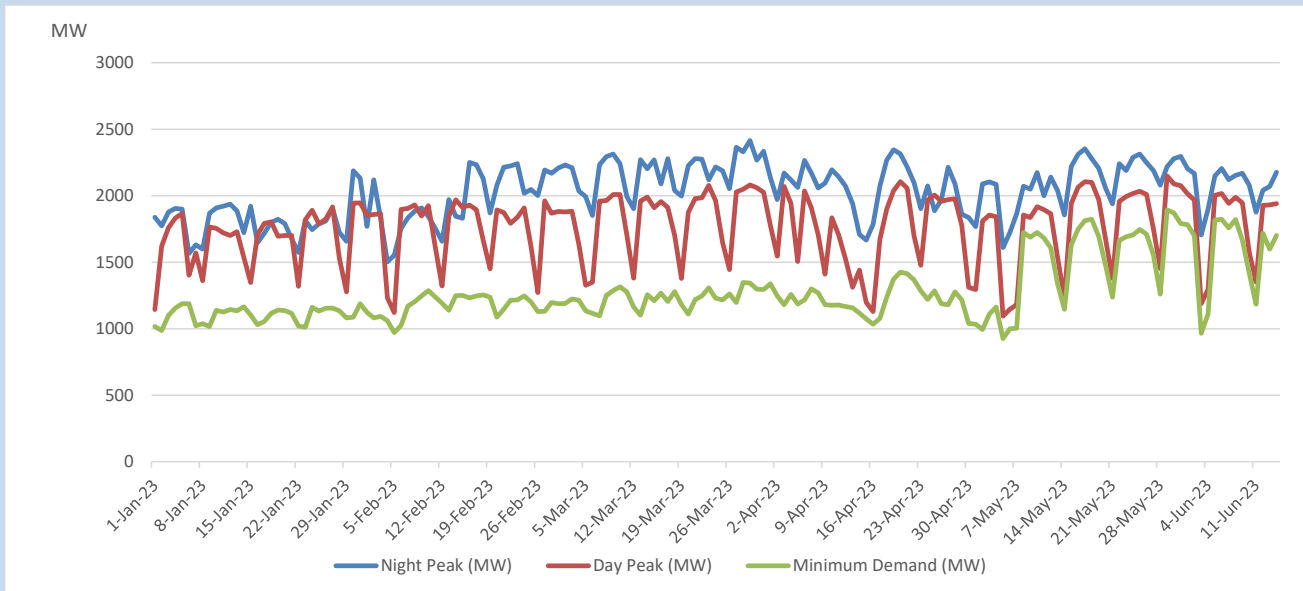
Comparison of Total Reservoir Storage Levels with Past Years



Variation of Major Hydro Reservoir Levels in the current year (GWh)



Variation of Demand during the current year

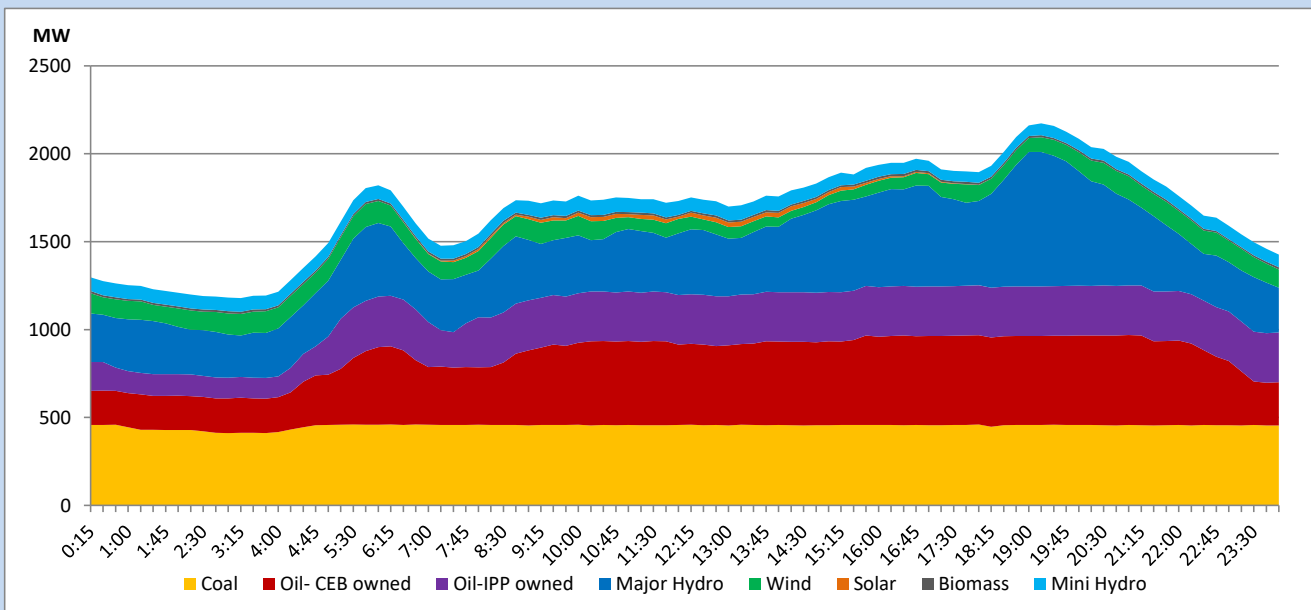


The above figures are excluding contribution from roof top solar, non telemetered solar and mini hydro plants

Daily Load Curve

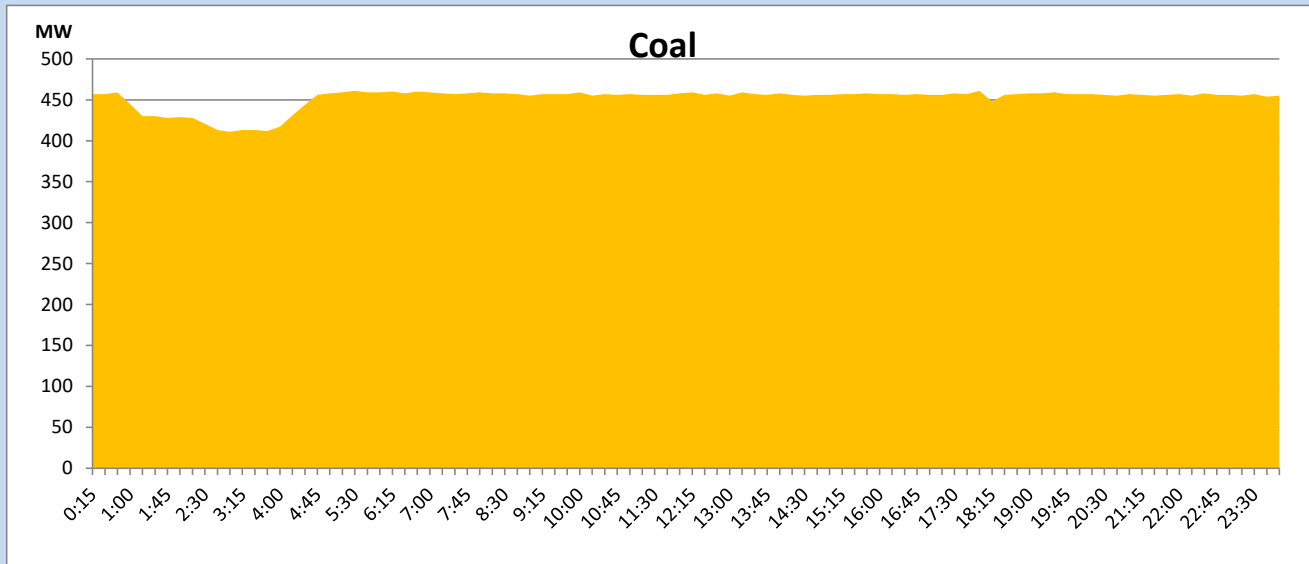
June 14, 2023

Solar and wind data is based on Telemetered Power Stations only



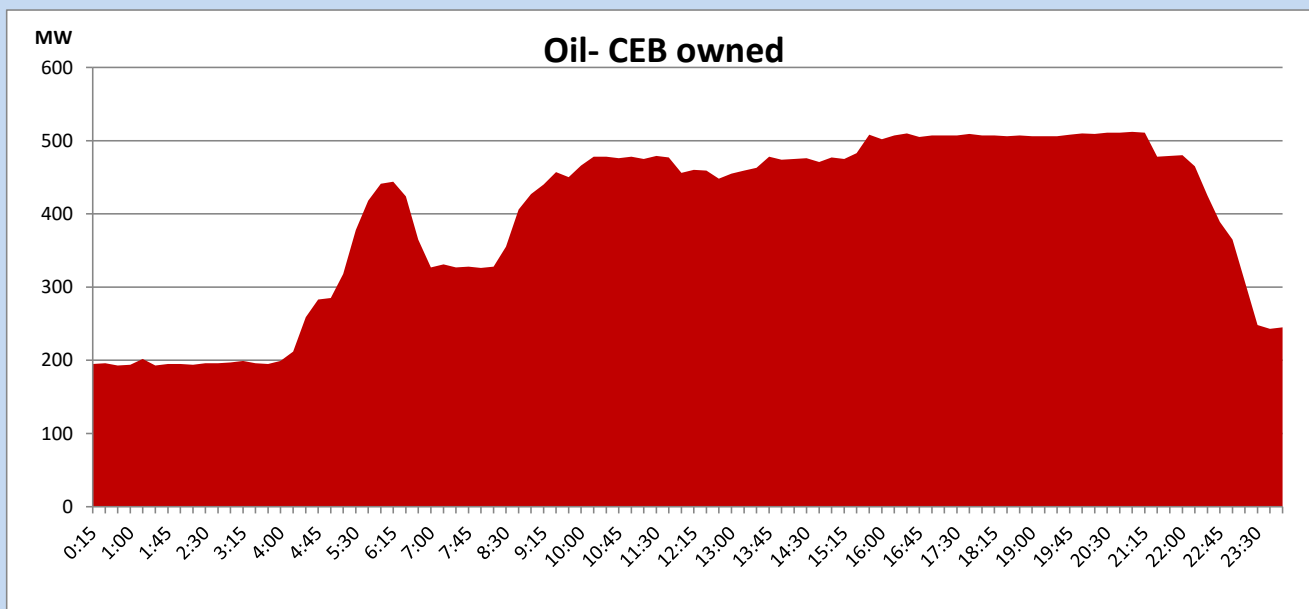
Coal Generation during

June 14, 2023



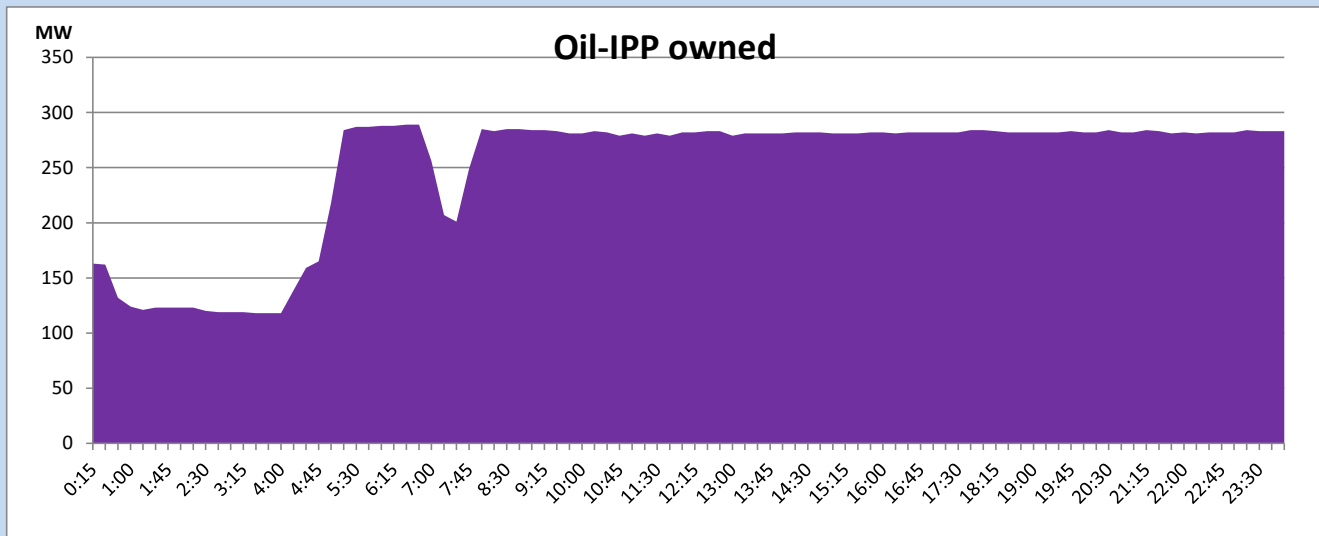
CEB Oil Plant Generation during

June 14, 2023



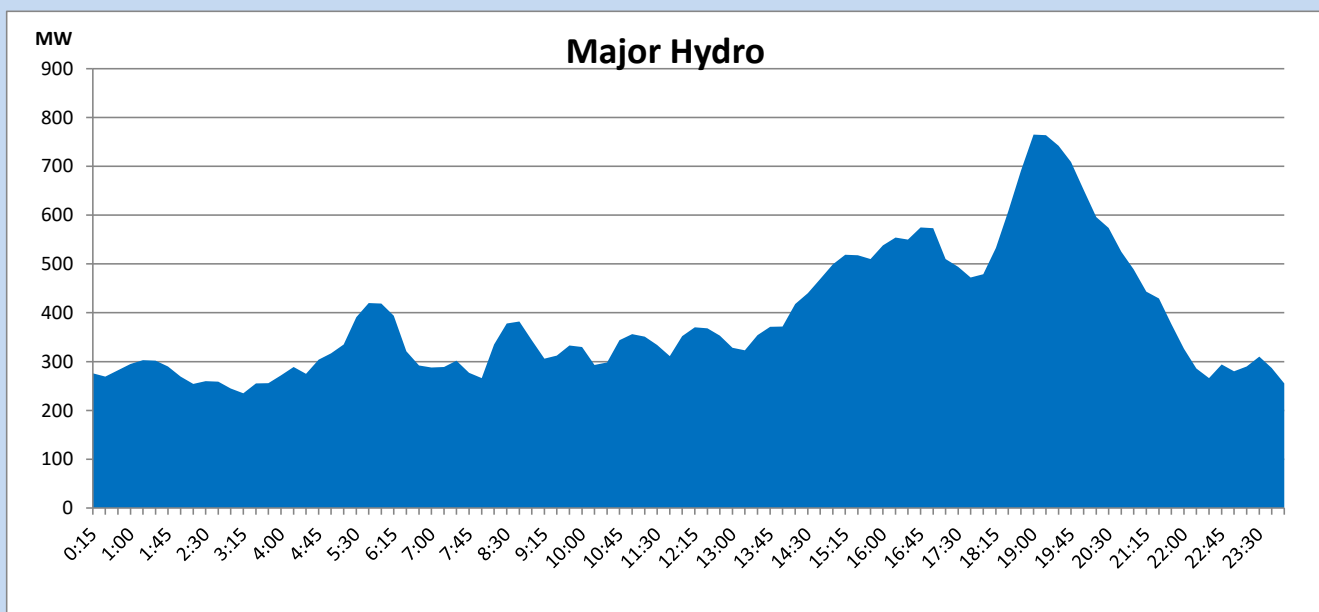
IPP Oil Plant Generation during

June 14, 2023



Major Hydro Generation during

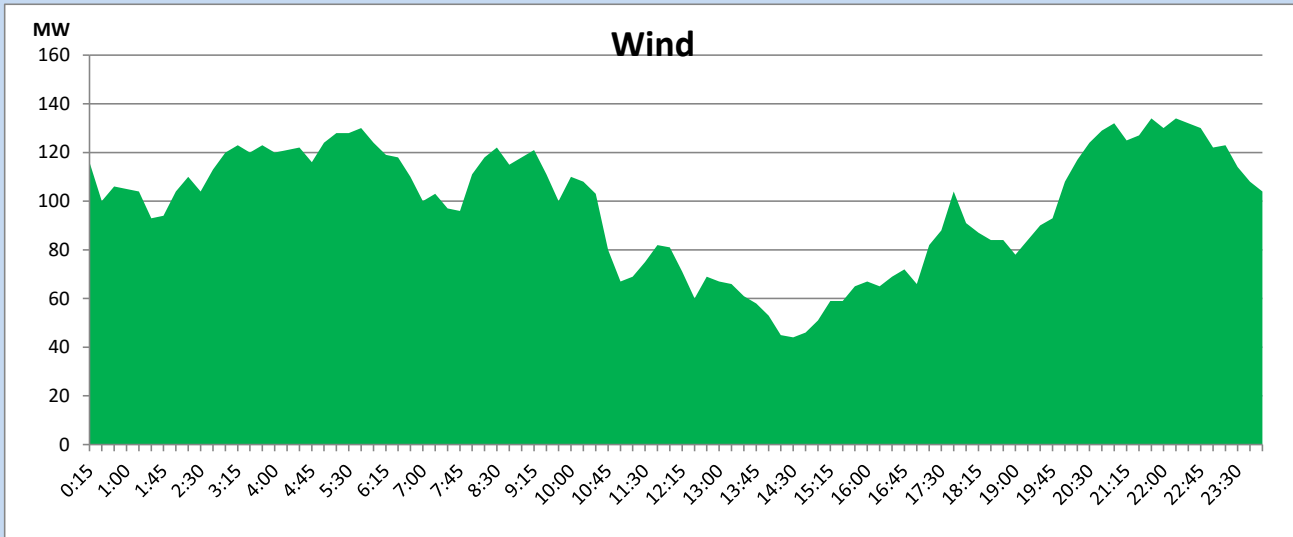
June 14, 2023



Wind Generation during

June 14, 2023

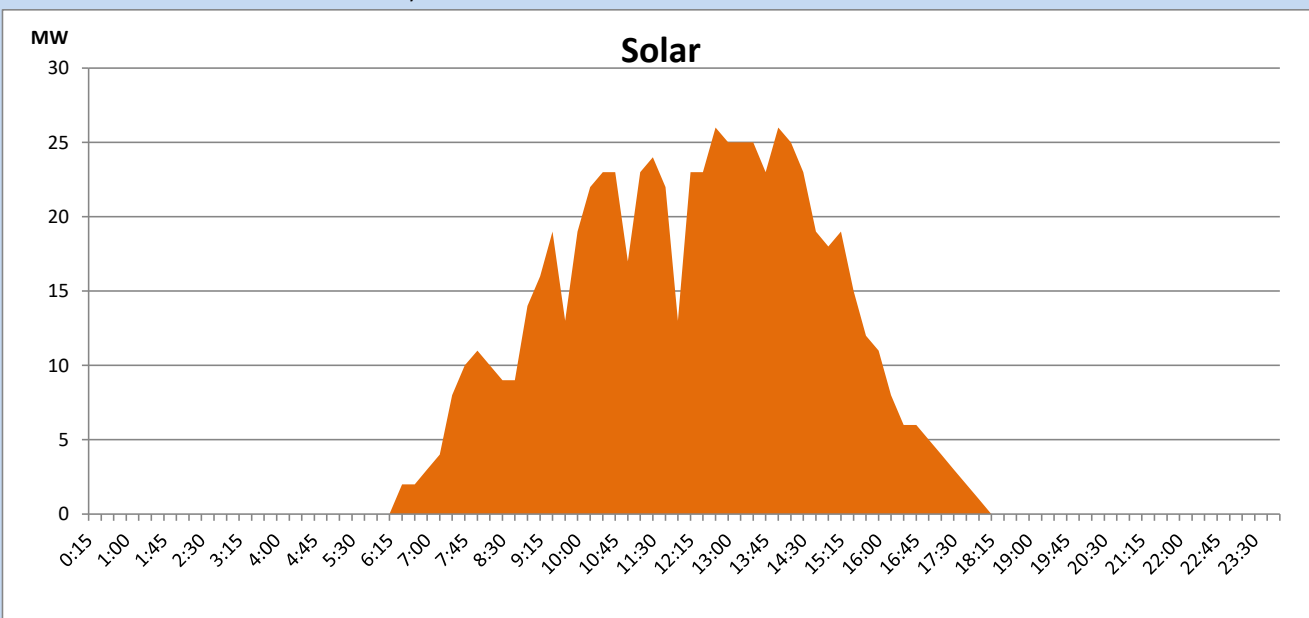
Based on Telemetered Power Stations only



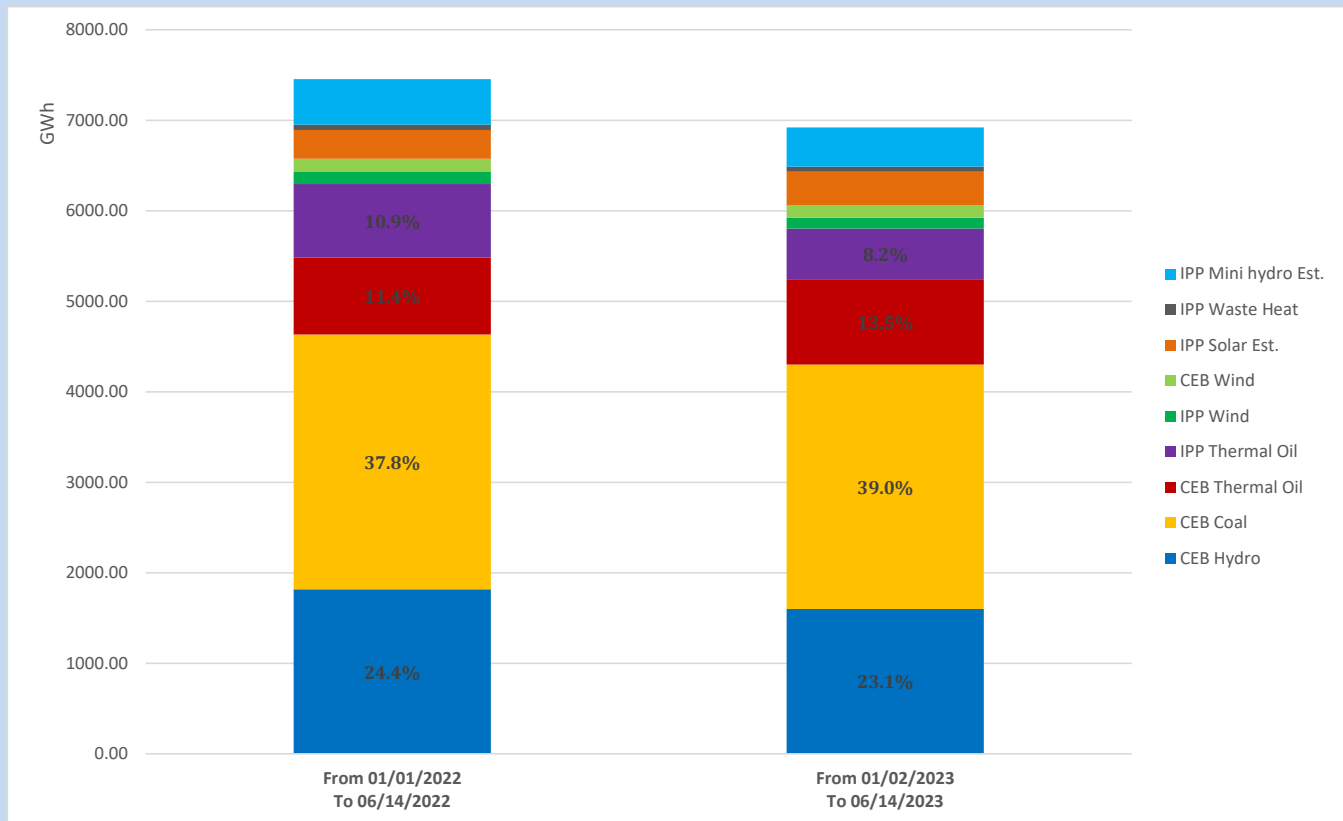
Solar Generation during

June 14, 2023

Based on Telemetered Power Stations only



Cumulative Dispatch Comparison with Last Year



The above figures are including contribution from roof top solar, non telemetered solar and mini hydro plants

Thermal Plant Fuel types

Power Station	Primary Fuel
CEB Thermal	
Sapugaskanda 1	Heavy Fuel
Sapugaskanda 2	Heavy Fuel
Kelanitissa Small Gas Turbines	Auto Diesel
GT 7 - Kelanitissa	Auto Diesel
Kelanitissa CCY	Naphtha or Diesel
Lakvijaya 1	Coal
Lakvijaya 2	Coal
Lakvijaya 3	Coal
Uthuru Janani	Heavy Fuel
Barge CEB	Heavy Fuel
KCCPS -2	Auto Diesel

Power Station	Primary Fuel
Private Thermal	
West Coast	Auto Diesel / Heavy Fuel

Major Incidents reported during the day

June 14, 2023

01) KPS GT 07 failed to start from 15:30hrs due to flame failure and was made unavailable from 18:23hrs.

02) O/Lax Gen. 05 tripped at 20:15hrs and resumed generation at 21:31hrs.

03) Randenigala both generators were made unavailable from 01:05hrs (15.06.2023) due to aux. supply failure and resumed generation by 04:53hrs.

04) Kukule spilling stopped at 06:00hrs (15.06.23).