

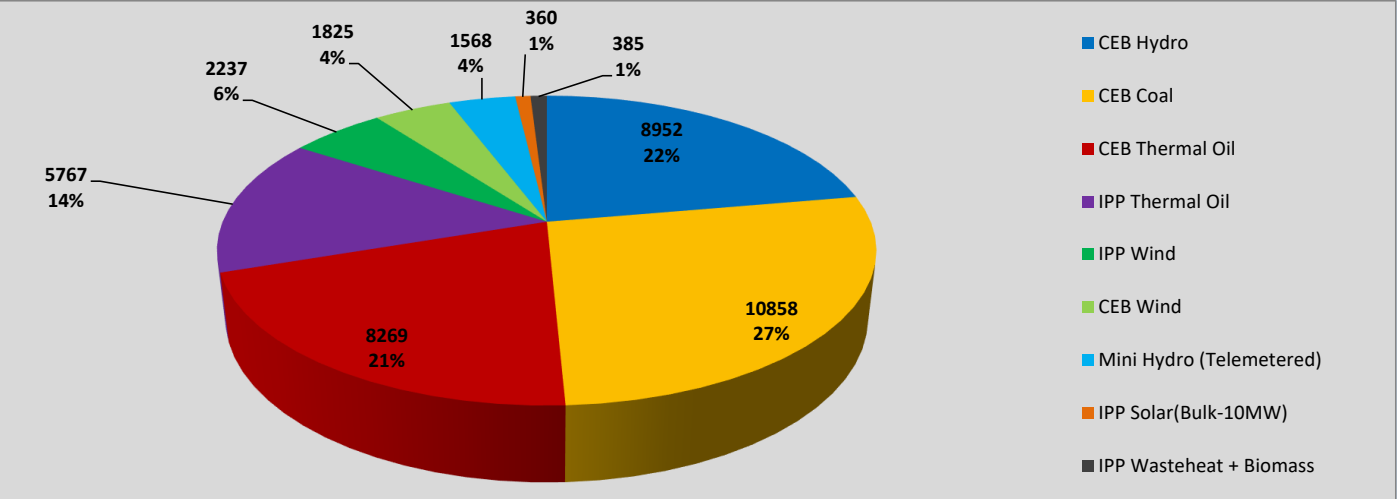
# Generation and Reservoirs Statistics

June 13, 2023



PUBLIC UTILITIES COMMISSION OF SRI LANKA

## Daily Generation Mix in MWh



Total Generation (Excluding estimated figures) = **40,221 MWh**

### Estimated figures of CEB generation report

Estimated unserved energy = 0.00 GWh  
Estimated Mini Hydro (Non telemetered) = 2512 MWh  
Estimated IPP Solar PV (Bulk 1-10MW) = 304 MWh  
Estimated Solar Roof Top PV = 1890 MWh

## Cumulative Dispatch

Following data excludes the contribution from roof top solar, non telemetered solar and mini hydro plants

### For Current Month

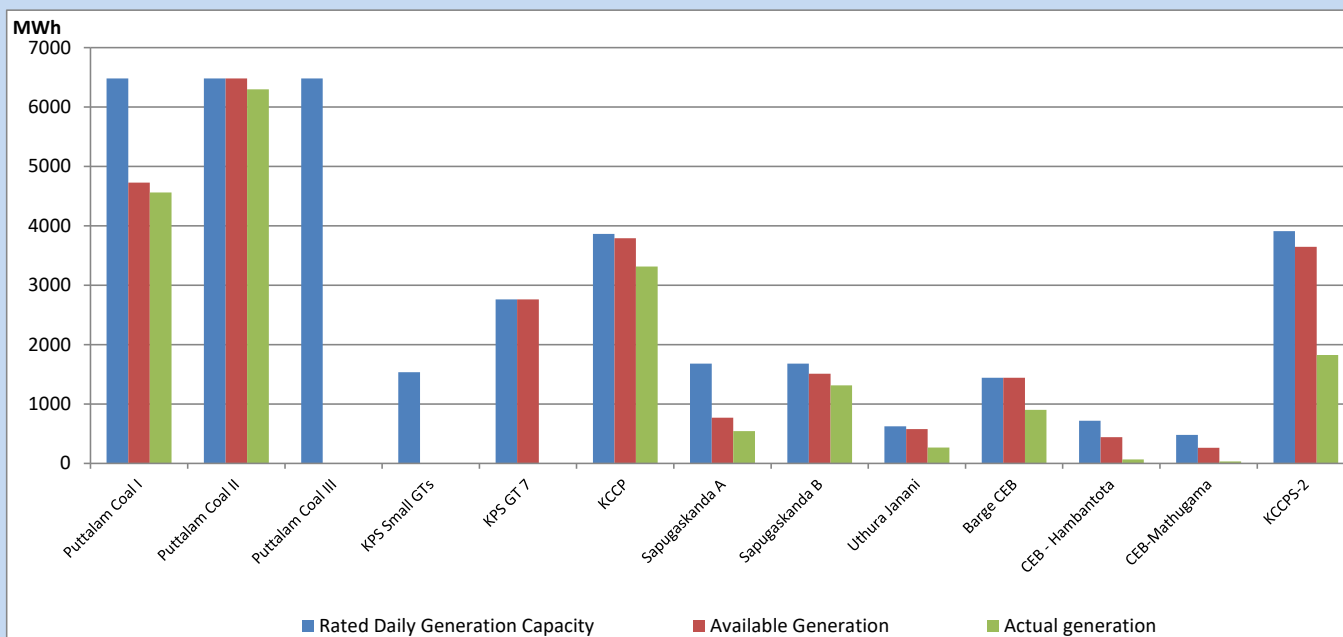
Category	Dispatch (GWh)	
CEB Hydro	113	22.00%
CEB Coal	197	38.21%
CEB Thermal Oil	82	15.87%
IPP Thermal	42	8.17%
SPP Wind	28	5.40%
CEB Wind	25	4.78%
Mini Hydro (Telemetered)	18	3.55%
IPP Solar(Bulk-10MW)	5	0.91%
IPP Wasteheat + BMP	6	1.12%
Total	515	

### For Current Year

Category	Dispatch (GWh)	
CEB Hydro	1,594	25.41%
CEB Coal	2,691	42.91%
CEB Thermal Oil	929	14.81%
IPP Thermal	559	8.91%
SPP Wind	118	1.89%
CEB Wind	136	2.16%
Mini Hydro (Telemetered)	144	2.30%
IPP Solar(Bulk-10MW)	48	0.76%
IPP Wasteheat	53	0.84%
Total	6,273	

## CEB owned Thermal Plant Dispatch

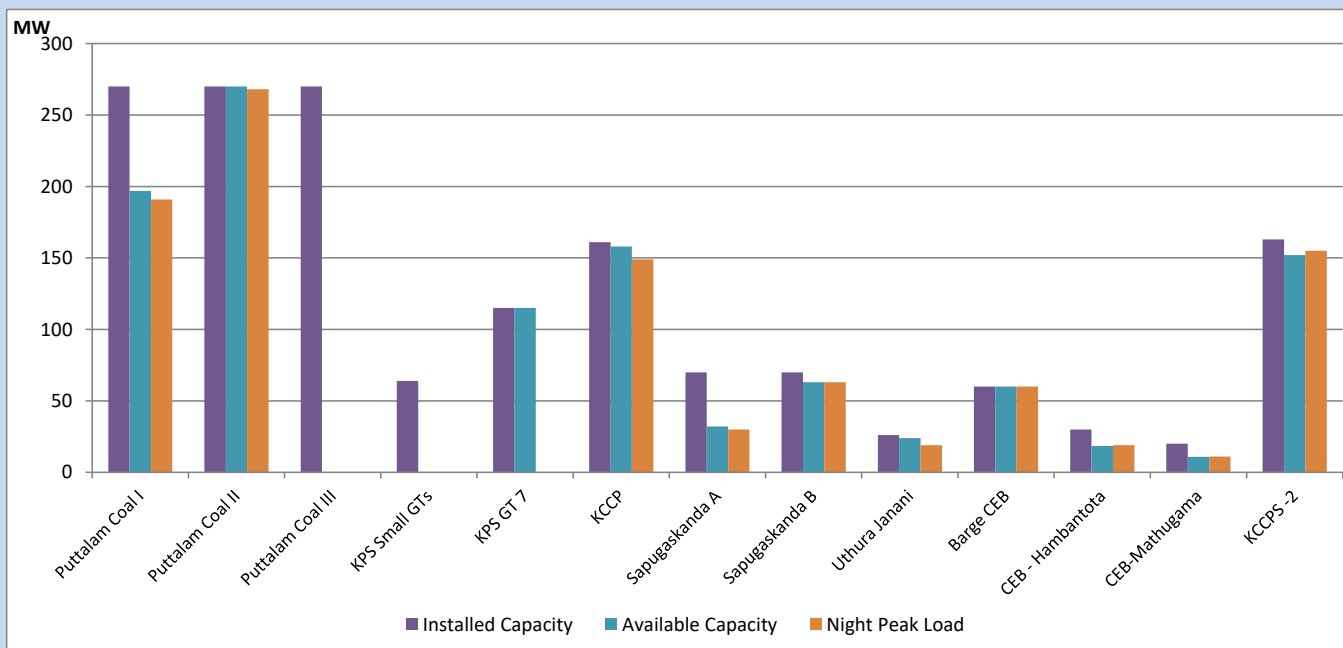
June 13, 2023



Available Generation is estimated based on plant availability at 6.00am on

June 14, 2023

## CEB owned Thermal Plant Loading at the Night Peak



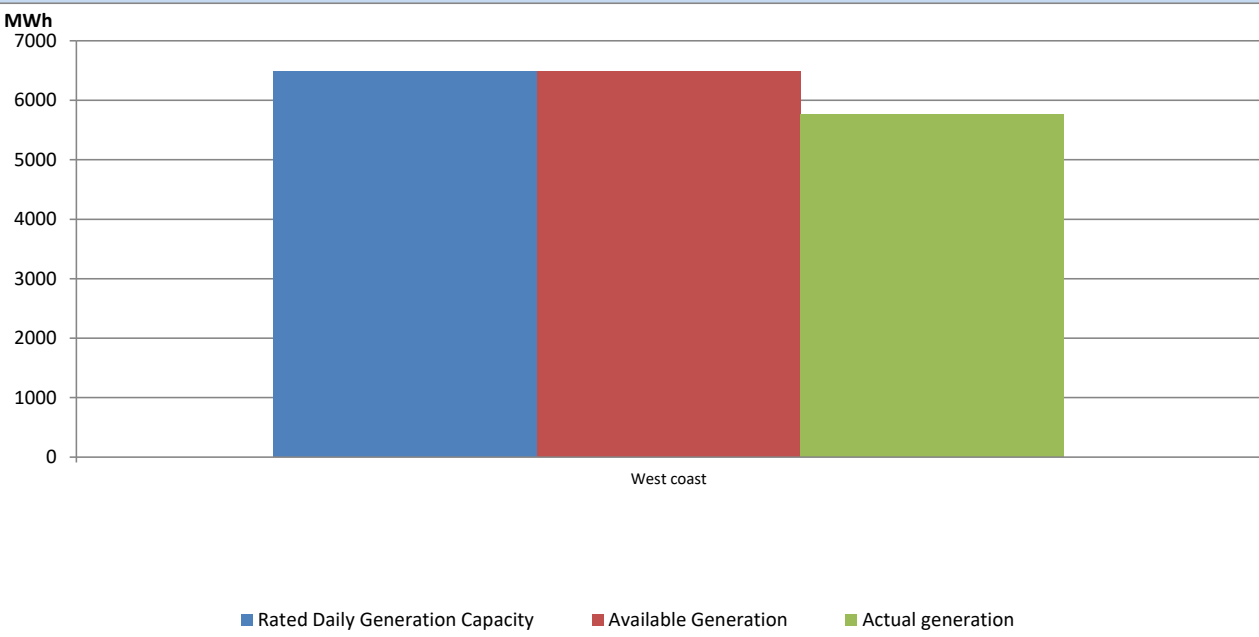
Note-

Plant availability is recorded at 6.00 am on

June 14, 2023

IPP owned Thermal Plant Dispatch

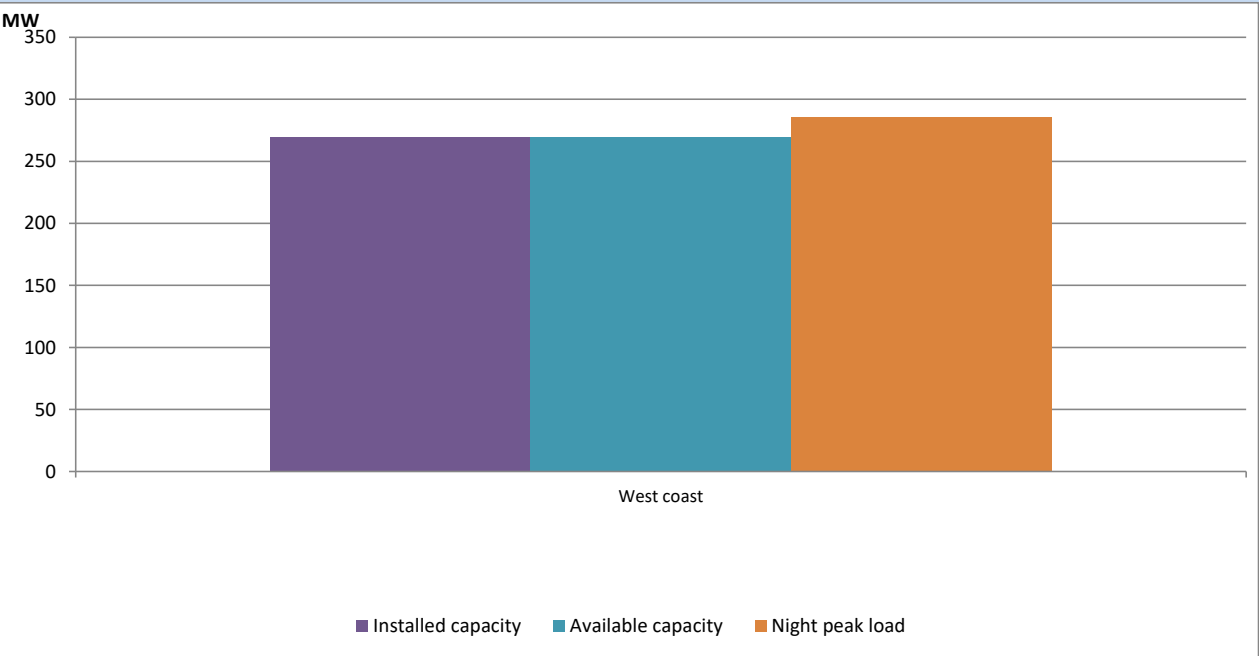
June 13, 2023



Available Generation is estimated based on plant availability at 6.00am on

June 14, 2023

IPP owned Thermal Plant Loading at the Night Peak

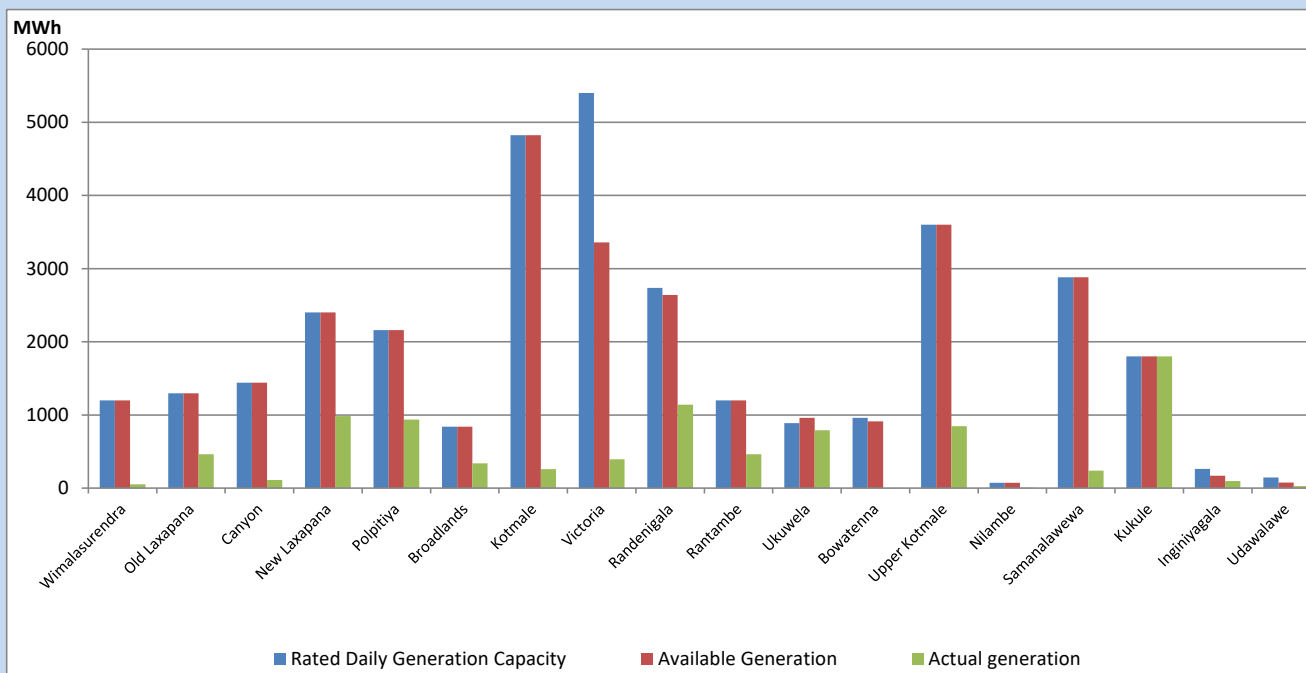


Note- Plant avilability is recorded at 6.00 am on

June 14, 2023

## Major Hydro Plant Dispatch

June 13, 2023

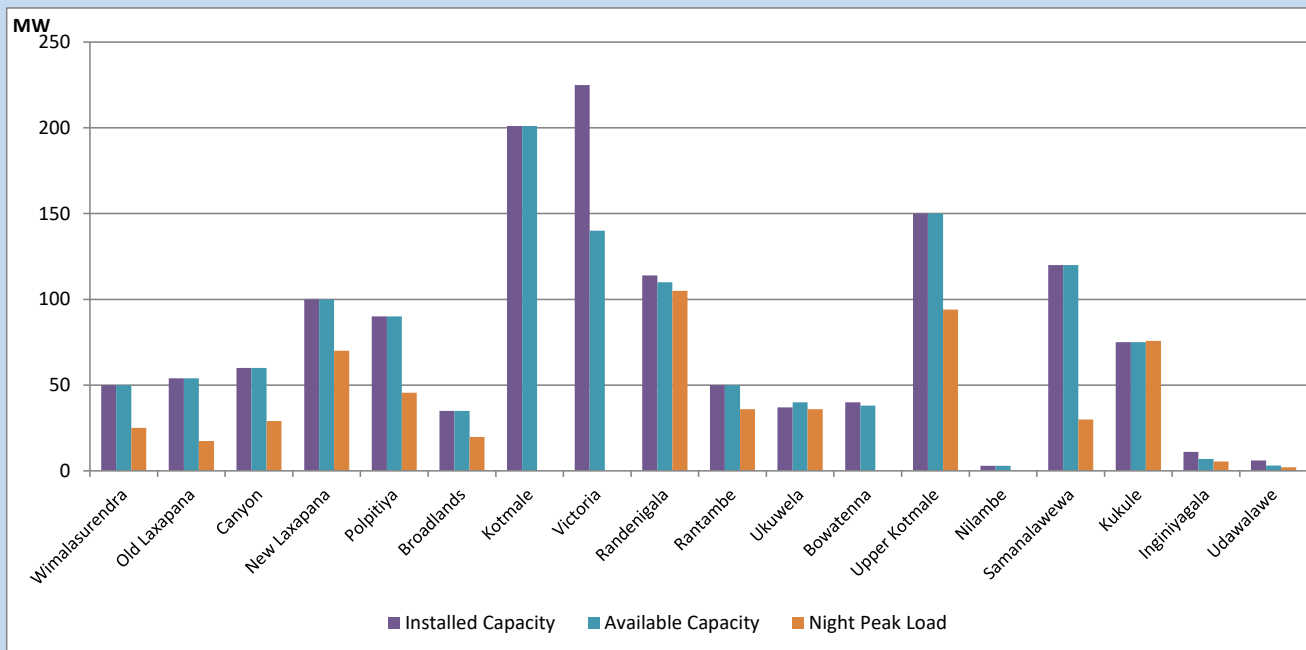


Available Generation is estimated based on plant availability at 6.00am on  
Broadlands power plant is operating in the Commissioning Stage

June 14, 2023

## Major Hydro Plant Loading at Night Peak

June 13, 2023



Note- Plant availability is recorded at 6.00 am on

June 14, 2023

Broadlands power plant is operating in the Commissioning Stage

## Summary of Major Plant performance

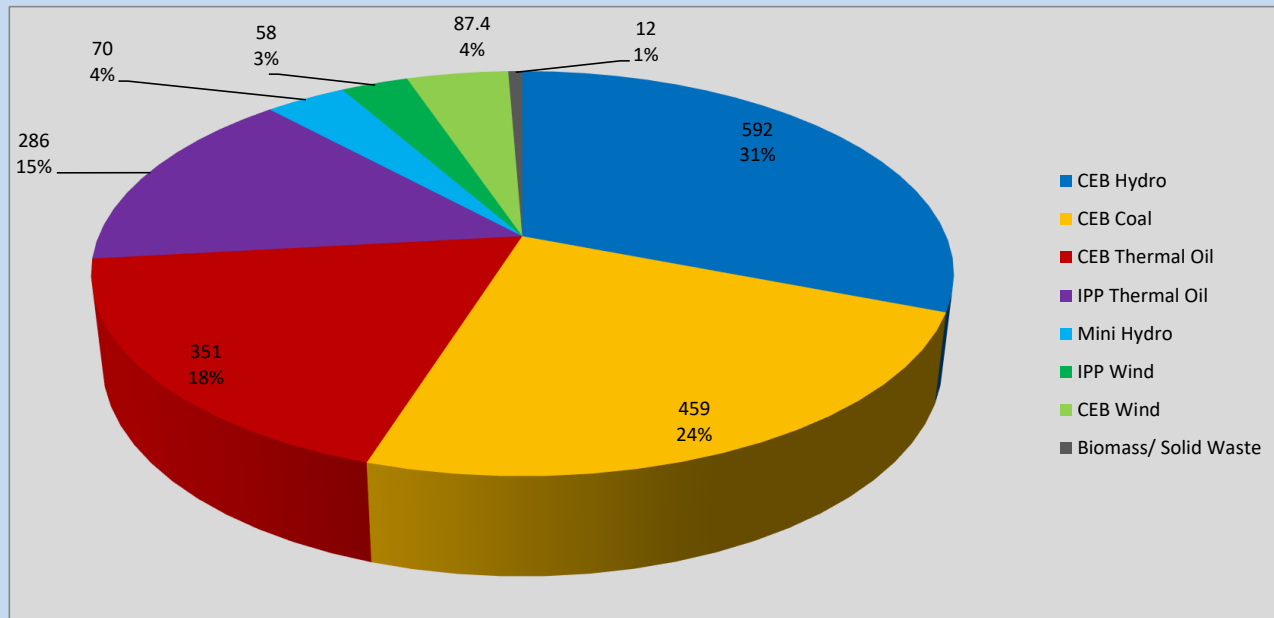
Plant	Installed Capacity	Plant Availability	Night peak Load	Plant Dispatch
	(MW)	(MW)	(MW)	(MWh)
Wimalasurendra	50	50	25	52
Old Laxapana	54	54	17	463
Canyon	60	60	29	111
New Laxapana	100	100	70	985
Polpitiya	90	90	46	936
Broadlands	35	35	20	338
Kotmale	201	201	0	260
Victoria	225	140	0	394
Randenigala	114	110	105	1,139
Rantambe	50	50	36	464
Ukuwela	37	40	36	791
Bowatenna	40	38	0	2
Upper Kotmale	150	150	94	847
Nilambe	3	3	0	7
Samanalawewa	120	120	30	240
Kukule	75	75	76	1,800
Inginiyagala	11	7	5	95
Udawalawe	6	3	2	28
Puttalam Coal I	270	197	191	4,561
Puttalam Coal II	270	270	268	6,297
Puttalam Coal III	270	0	0	0
KPS Small GTs	64	0	0	0
KPS GT 7	115	115	0	0
KCCP	161	158	149	3,313
Sapugaskanda A	70	32	30	545
Sapugaskanda B	70	63	63	1,315
Uthura Janani	26	24	19	267
Barge CEB	60	60	60	902
CEB-Hambantota	30	18	19	68
CEB-Mathugama	20	11	11	34
ACE Matara	24	0	0	0
Asia Power	50	0	0	0
KCCPS -2	163	152	155	1,825
West Coast	270	270	286	5,767
Nothorn Power	36	0	0	0
ACE Embilipitiya	93	0	0	0
Total	3,483	2,696	2,069	40,221

Plant availability is the availability recorded at 6 am on

June 14, 2023

## Contribution to the Night Peak in MW

June 13, 2023

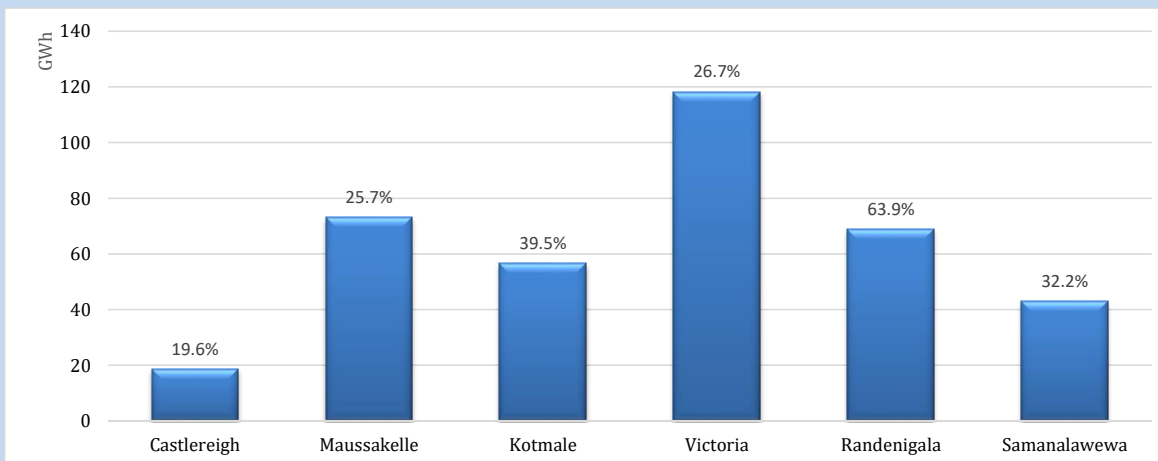


Night Peak\* 2,070 MW  
 Day Peak Maximum Demand 1,931 MW  
 Day Peak Minimum Demand 1,598 MW  
 Off Peak Minimum Demand 1,185 MW

Above figures are excluding contribution from roof top solar, non telemetered solar and mini hydro plants

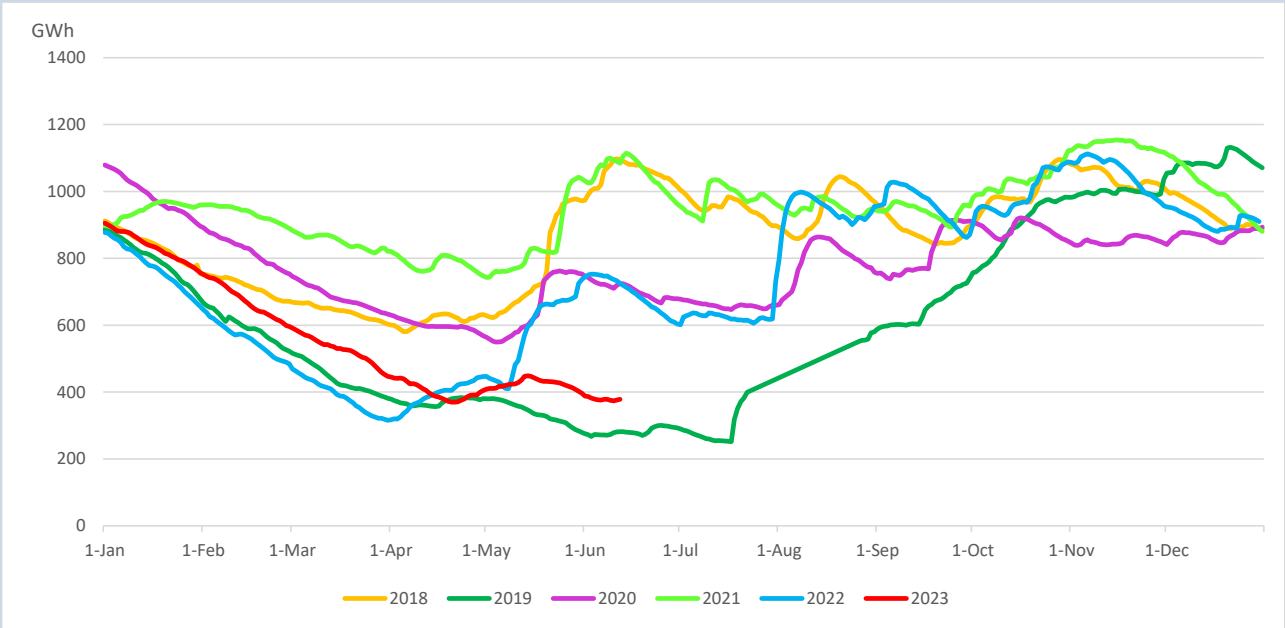
## Reservoir Levels -

as at 06.00 Hr on June 14, 2023

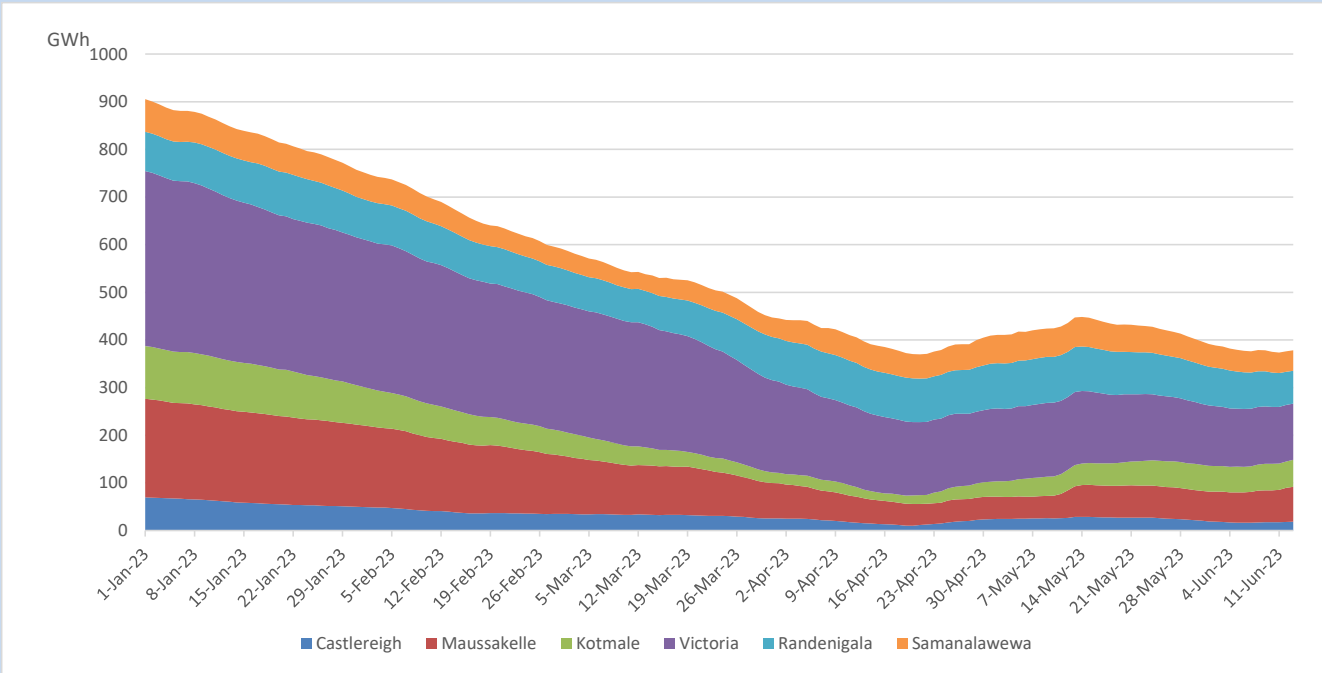


Total Reservoir Level 378.3 GWh  
 % of Total capacity 31.4%

Comparison of Total Reservoir Storage Levels with Past Years

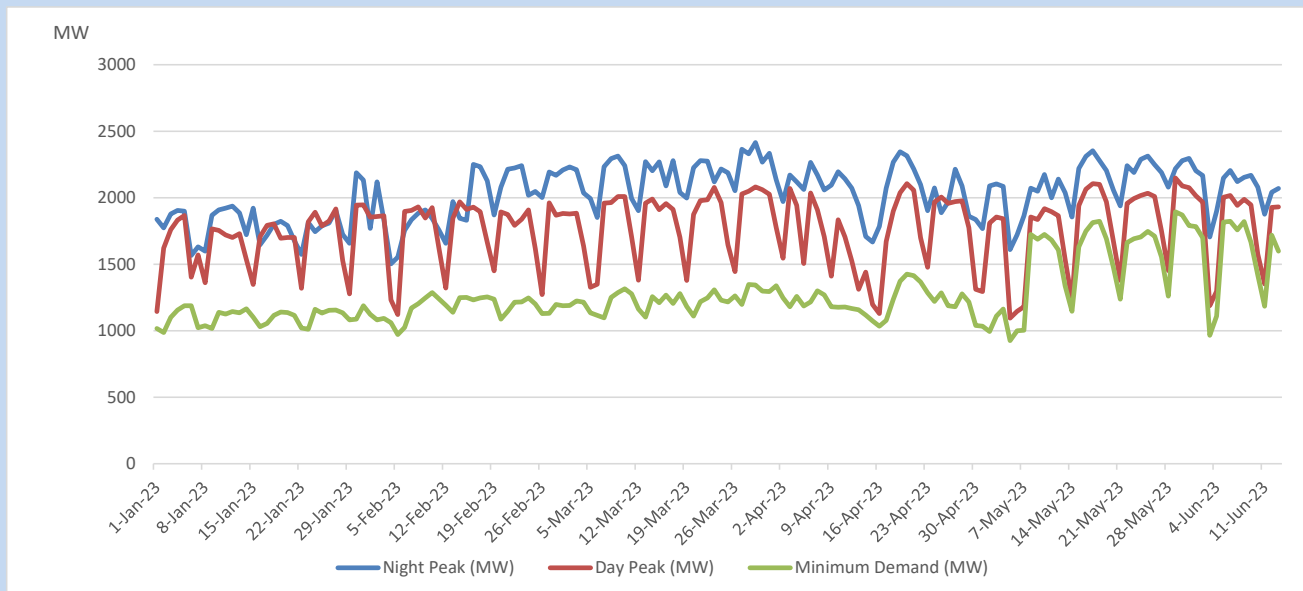


Variation of Major Hydro Reservoir Levels in the current year (GWh)





## Variation of Demand during the current year

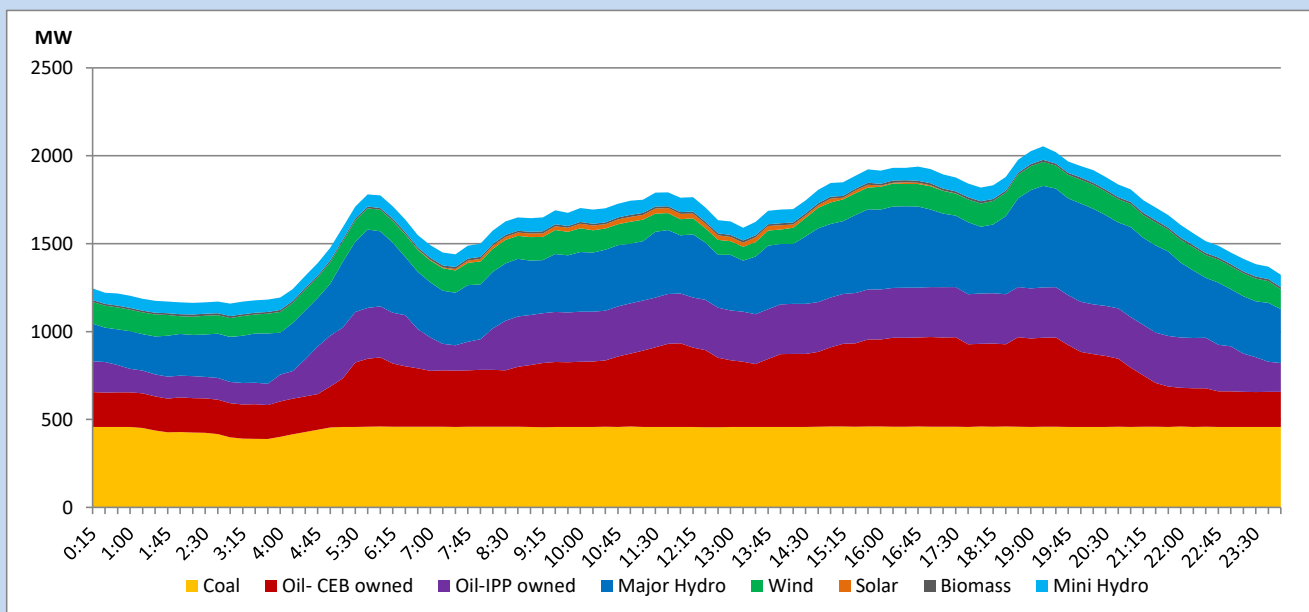


The above figures are excluding contribution from roof top solar, non telemetered solar and mini hydro plants

## Daily Load Curve

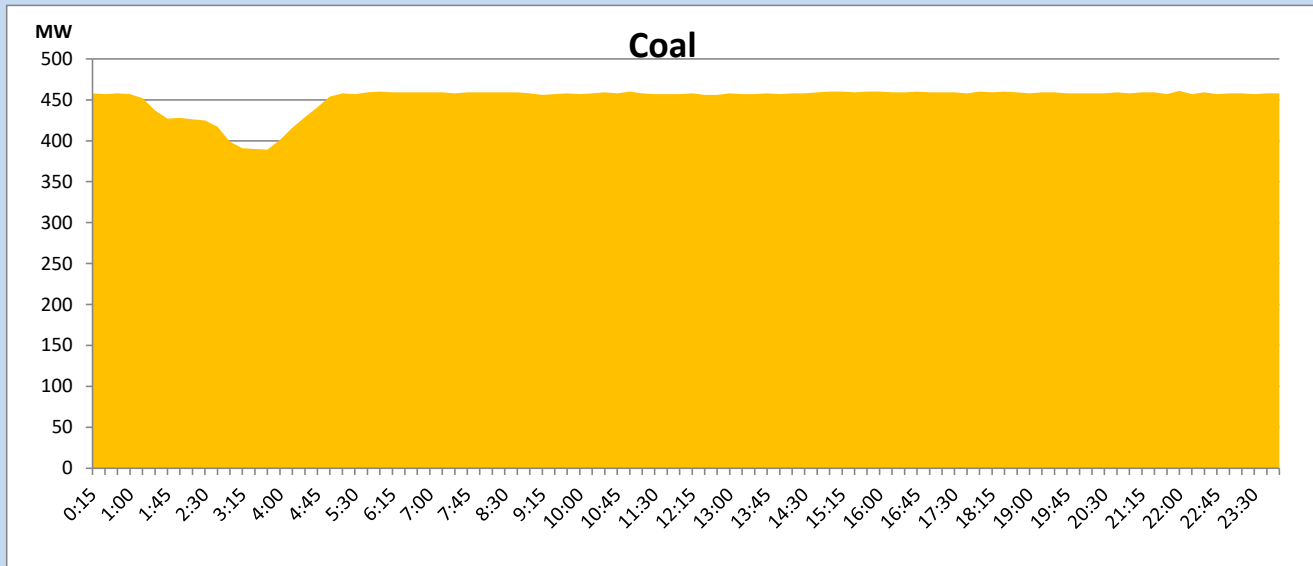
June 13, 2023

Solar and wind data is based on Telemetered Power Stations only



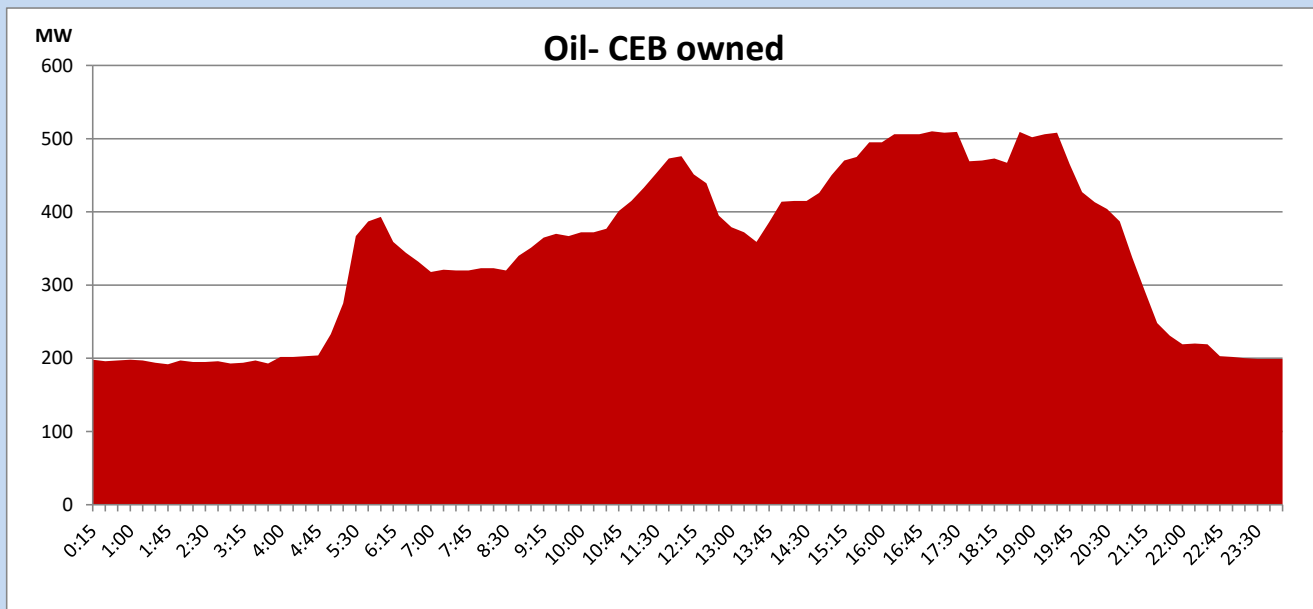
## Coal Generation during

June 13, 2023



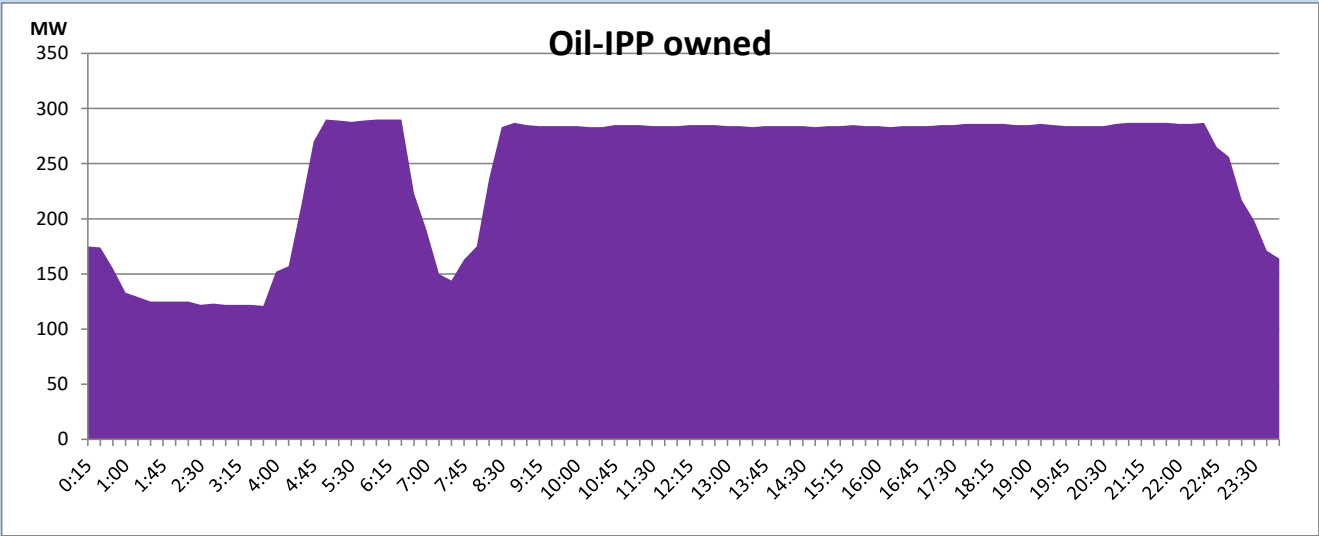
## CEB Oil Plant Generation during

June 13, 2023



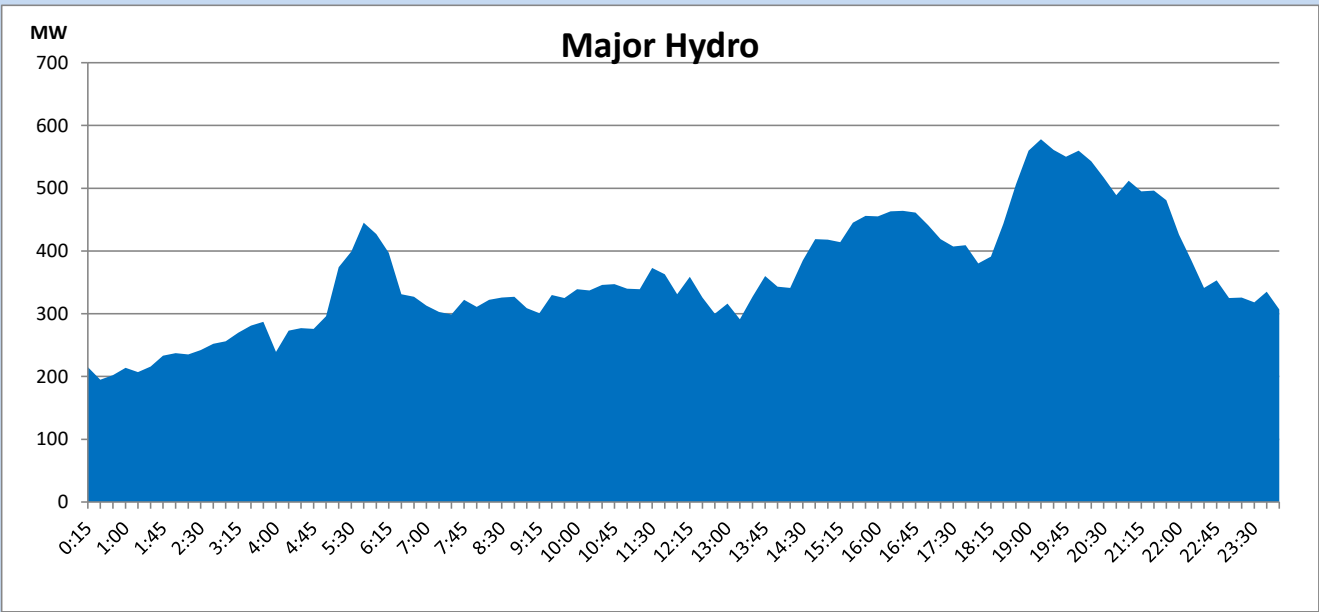
IPP Oil Plant Generation during

June 13, 2023



Major Hydro Generation during

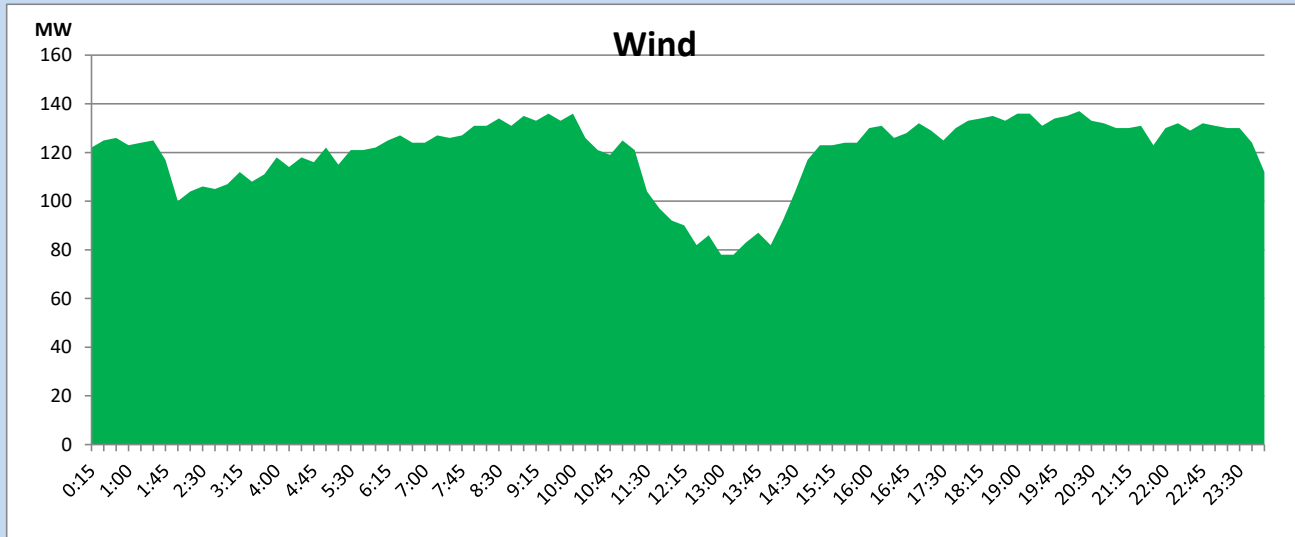
June 13, 2023



## Wind Generation during

June 13, 2023

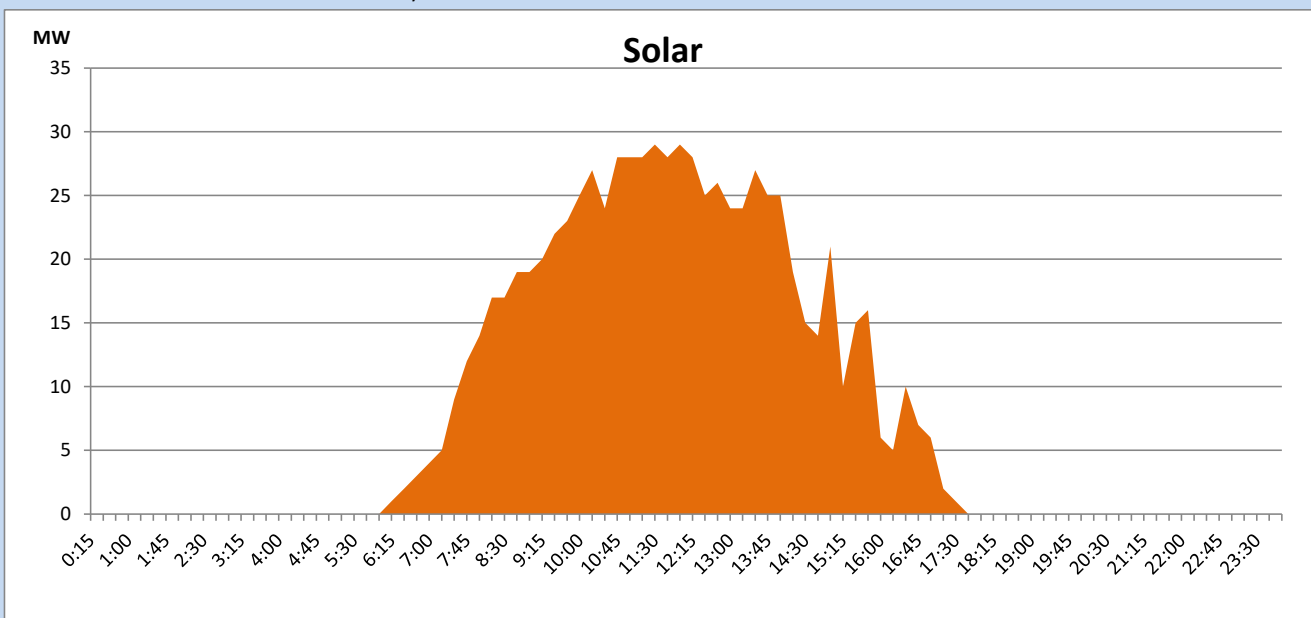
Based on Telemetered Power Stations only



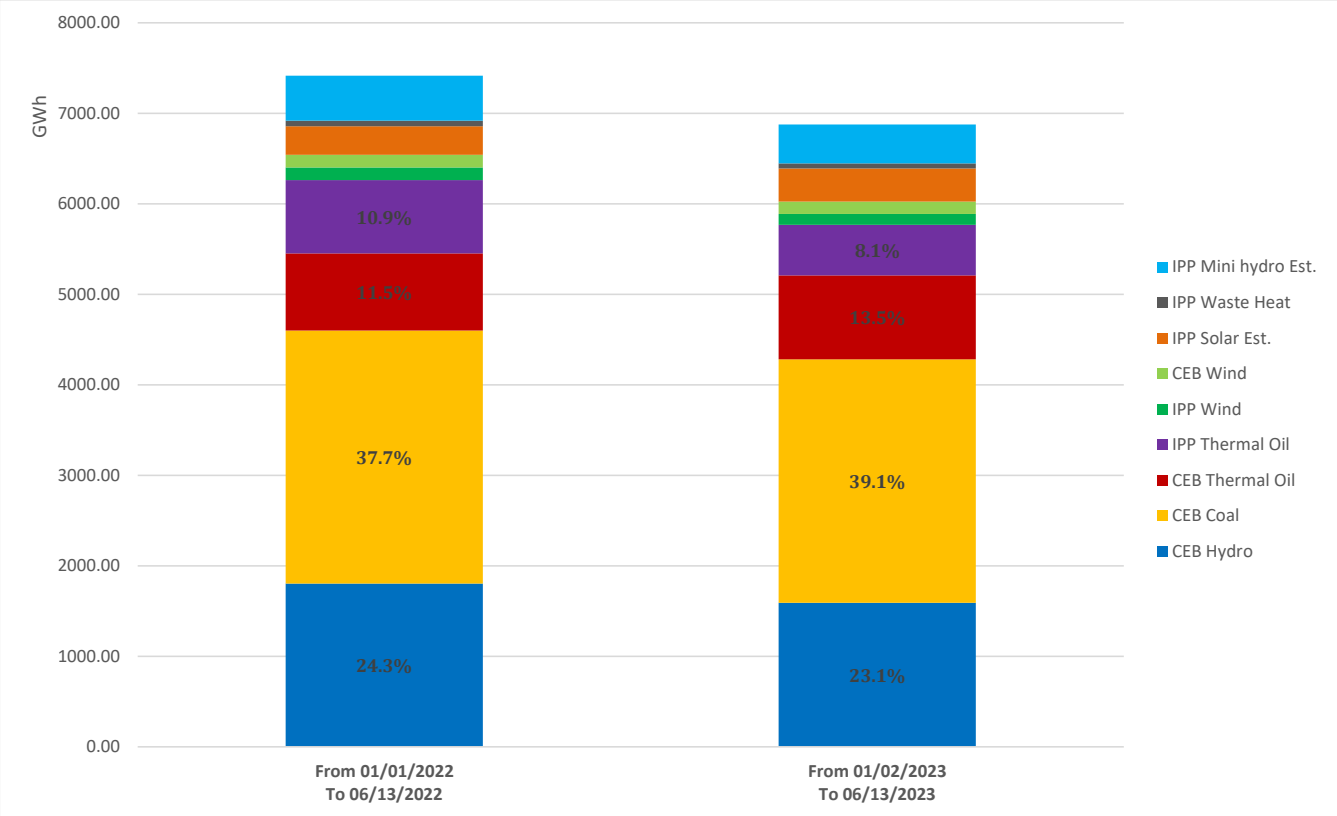
## Solar Generation during

June 13, 2023

Based on Telemetered Power Stations only



## Cumulative Dispatch Comparison with Last Year



The above figures are including contribution from roof top solar, non telemetered solar and mini hydro plants

**Thermal Plant Fuel types**

Power Station	Primary Fuel
CEB Thermal	
Sapugaskanda 1	Heavy Fuel
Sapugaskanda 2	Heavy Fuel
Kelanitissa Small Gas Turbines	Auto Diesel
GT 7 - Kelanitissa	Auto Diesel
Kelanitissa CCY	Naphtha or Diesel
Lakvijaya 1	Coal
Lakvijaya 2	Coal
Lakvijaya 3	Coal
Uthuru Janani	Heavy Fuel
Barge CEB	Heavy Fuel
KCCPS -2	Auto Diesel

Power Station	Primary Fuel
Private Thermal	
West Coast	Auto Diesel / Heavy Fuel

**Major Incidents reported during the day**

June 13, 2023

01) Mahiyanganaya-Vavunathivu 132kV cct tripped from Mahiyanganaya end and tripped & A/R from Vavunathivu end at 15:07 hrs due to the operation of differential protection. The cct was normalized at 15:18 hrs.

02) Kosgama 132/33kV T/F 01 tripped at 17:31 hrs due to the operation of LV E/F protection. At the same time, Kosgama 132/33kV T/F 02 tripped indicating an inter-trip from main transformer protection. Tripping of both transformers caused the 33kV side of Kosgama GSS to be dead. Kosgama 132/33kV T/F 01, T/F 02 and all affected feeders were normalized by 18:55 hrs.

03) Kukule spilling continues to the present hour.