

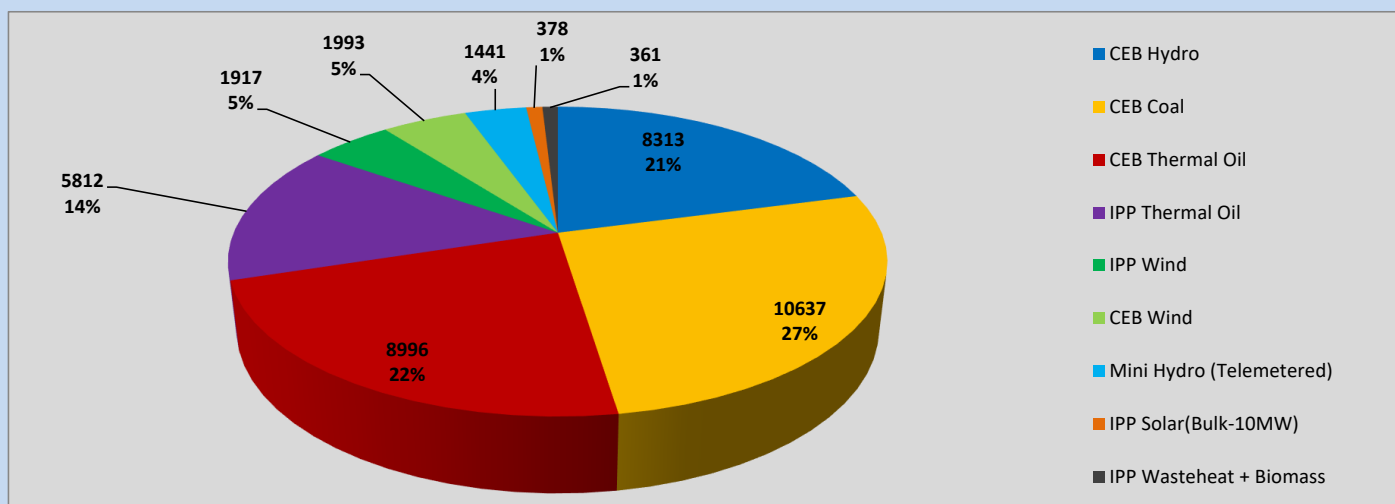
Generation and Reservoirs Statistics

June 12, 2023



PUBLIC UTILITIES COMMISSION OF SRI LANKA

Daily Generation Mix in MWh



Total Generation (Excluding estimated figures) =

39,848 MWh

Estimated figures of CEB generation report

Estimated unserved energy = 0.00 GWh

Estimated Mini Hydro (Non telemetered) = 2639 MWh

Estimated IPP Solar PV (Bulk 1-10MW) = 304 MWh

Estimated Solar Roof Top PV = 1890 MWh

Cumulative Dispatch

Following data excludes the contribution from roof top solar, non telemetered solar and mini hydro plants

For Current Month

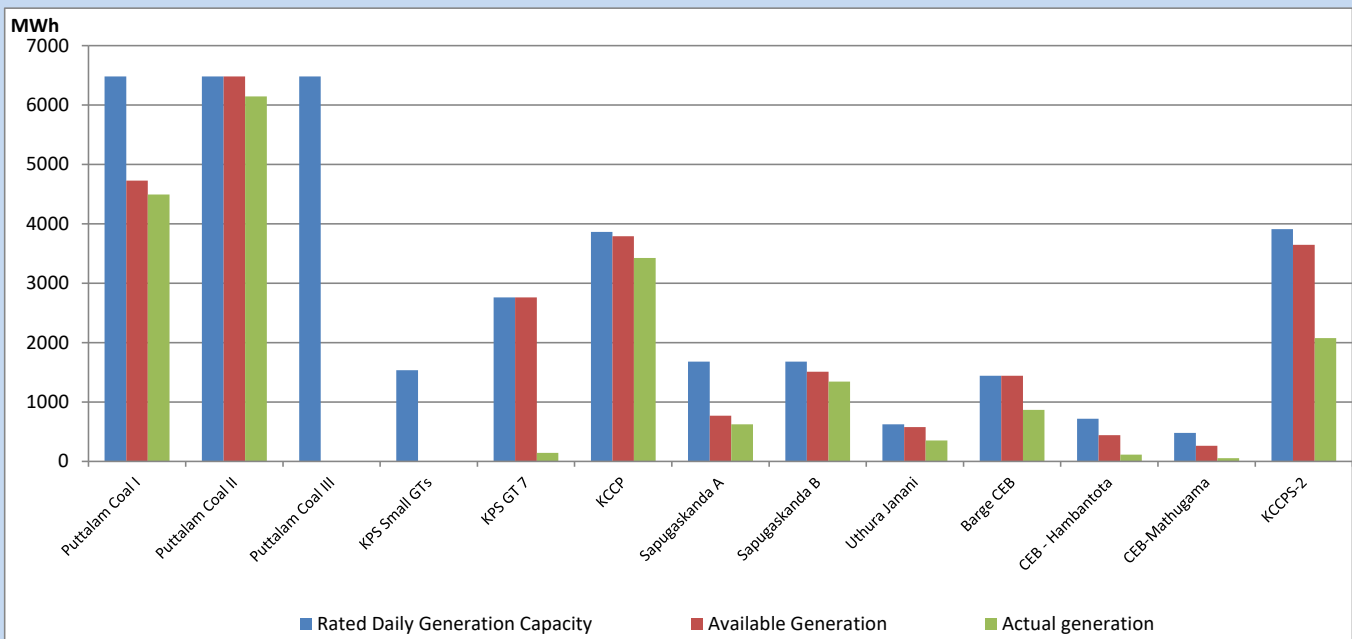
Category	Dispatch (GWh)	
CEB Hydro	104	21.98%
CEB Coal	186	39.16%
CEB Thermal Oil	73	15.47%
IPP Thermal	36	7.65%
SPP Wind	26	5.38%
CEB Wind	23	4.80%
Mini Hydro (Telemetered)	17	3.52%
IPP Solar(Bulk-10MW)	4	0.91%
IPP Wasteheat + BMP	5	1.14%
Total	474	

For Current Year

Category	Dispatch (GWh)	
CEB Hydro	1,585	25.43%
CEB Coal	2,681	43.01%
CEB Thermal Oil	921	14.77%
IPP Thermal	553	8.88%
SPP Wind	116	1.86%
CEB Wind	134	2.15%
Mini Hydro (Telemetered)	143	2.29%
IPP Solar(Bulk-10MW)	47	0.76%
IPP Wasteheat	53	0.84%
Total	6,232	

CEB owned Thermal Plant Dispatch

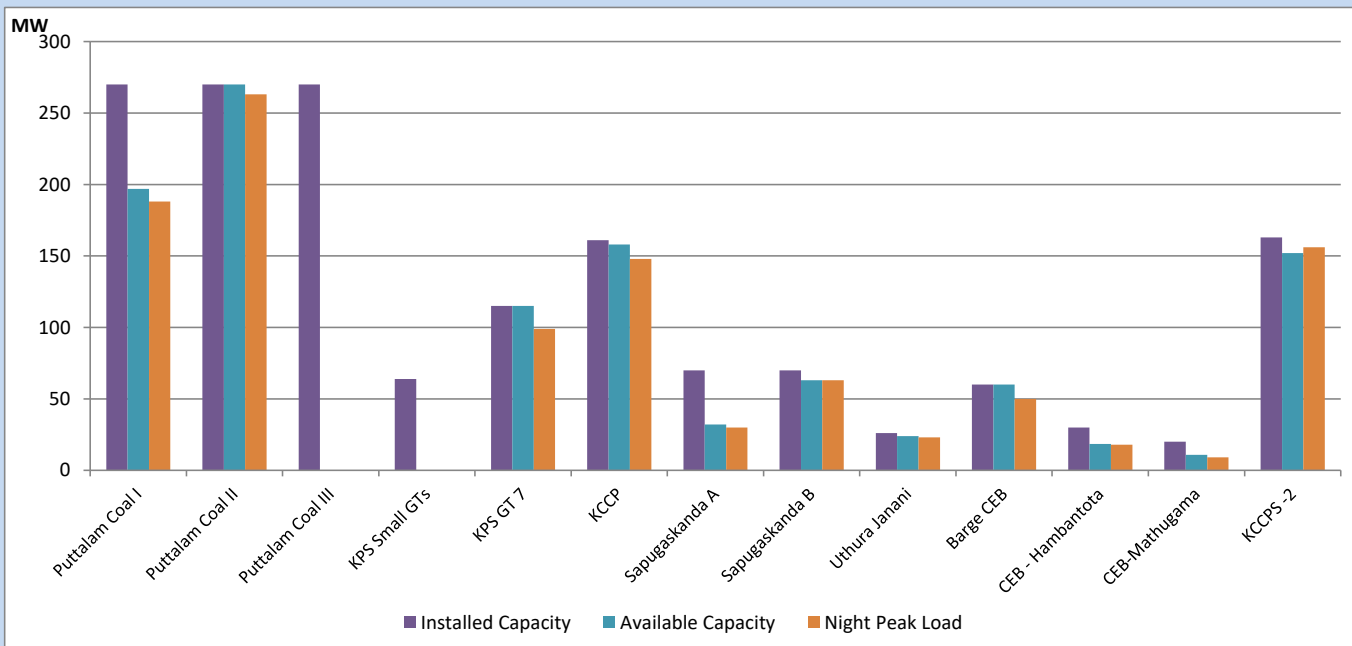
June 12, 2023



Available Generation is estimated based on plant availability at 6.00am on

June 13, 2023

CEB owned Thermal Plant Loading at the Night Peak



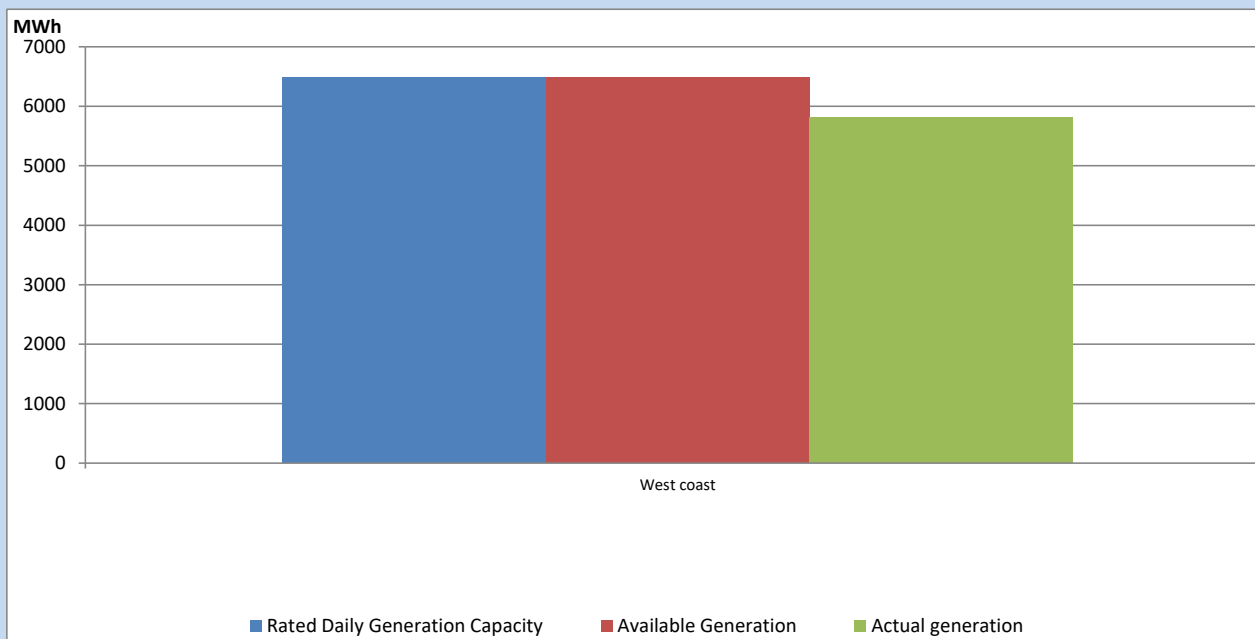
Note-

Plant availability is recorded at 6.00 am on

June 13, 2023

IPP owned Thermal Plant Dispatch

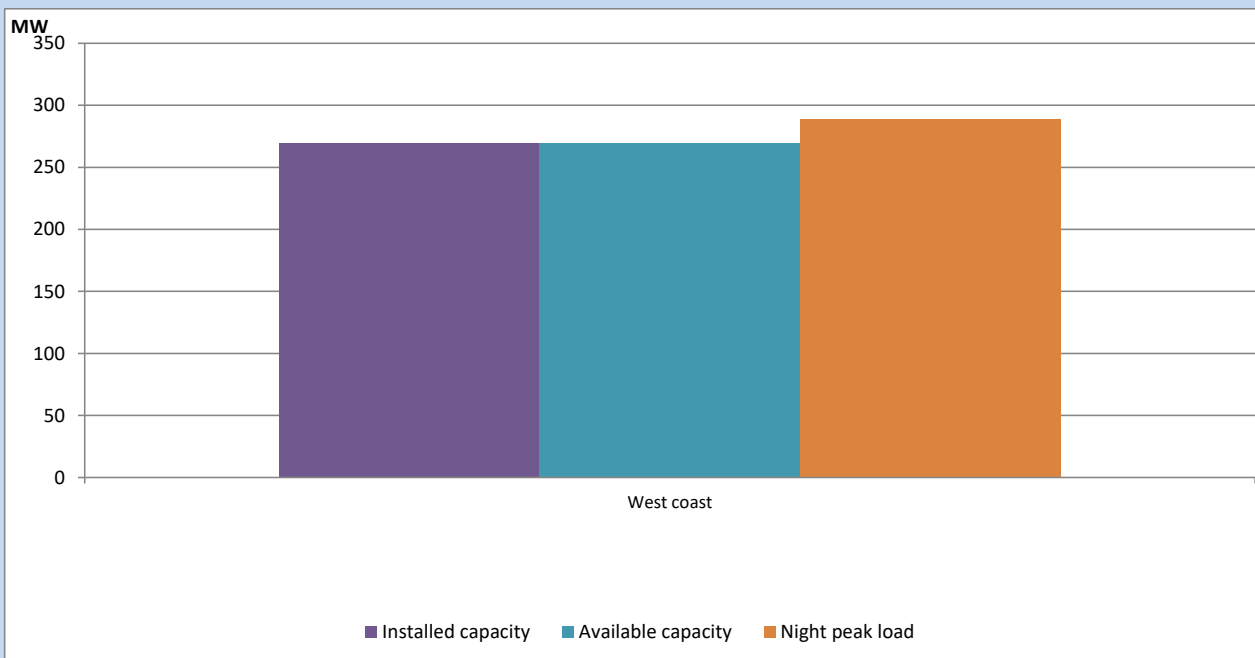
June 12, 2023



Available Generation is estimated based on plant availability at 6.00am on

June 13, 2023

IPP owned Thermal Plant Loading at the Night Peak

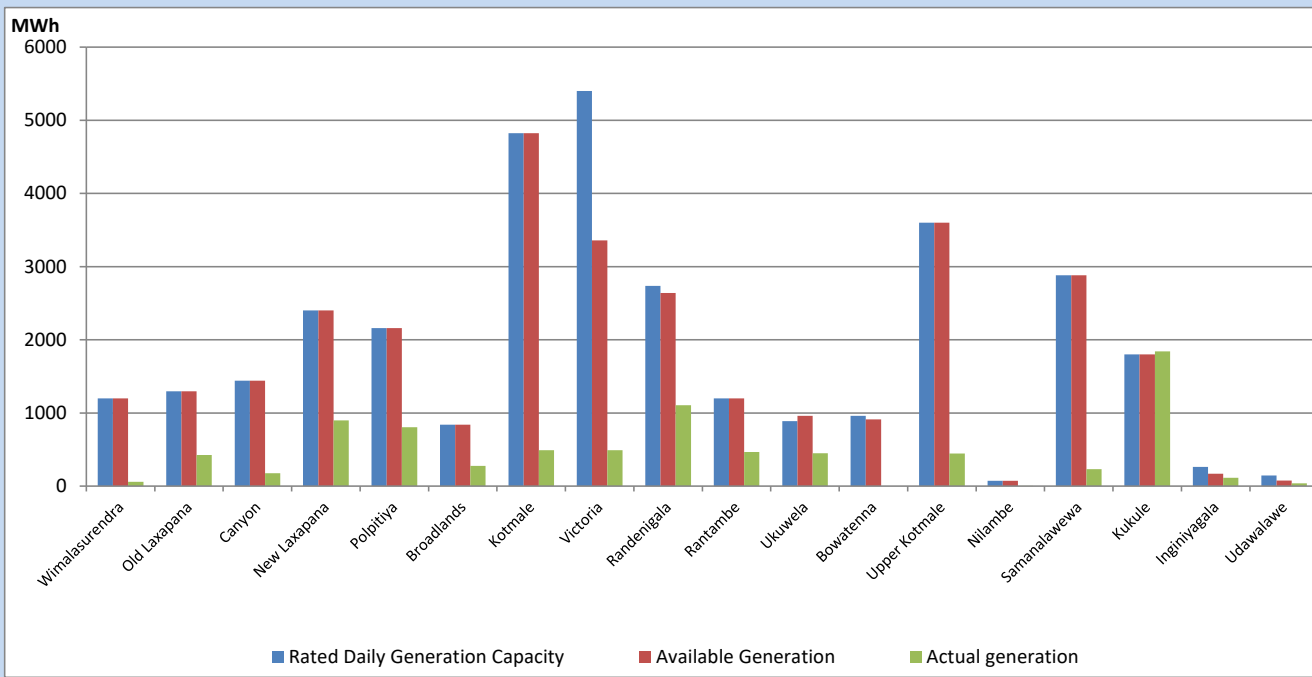


Note- Plant availability is recorded at 6.00 am on

June 13, 2023

Major Hydro Plant Dispatch

June 12, 2023

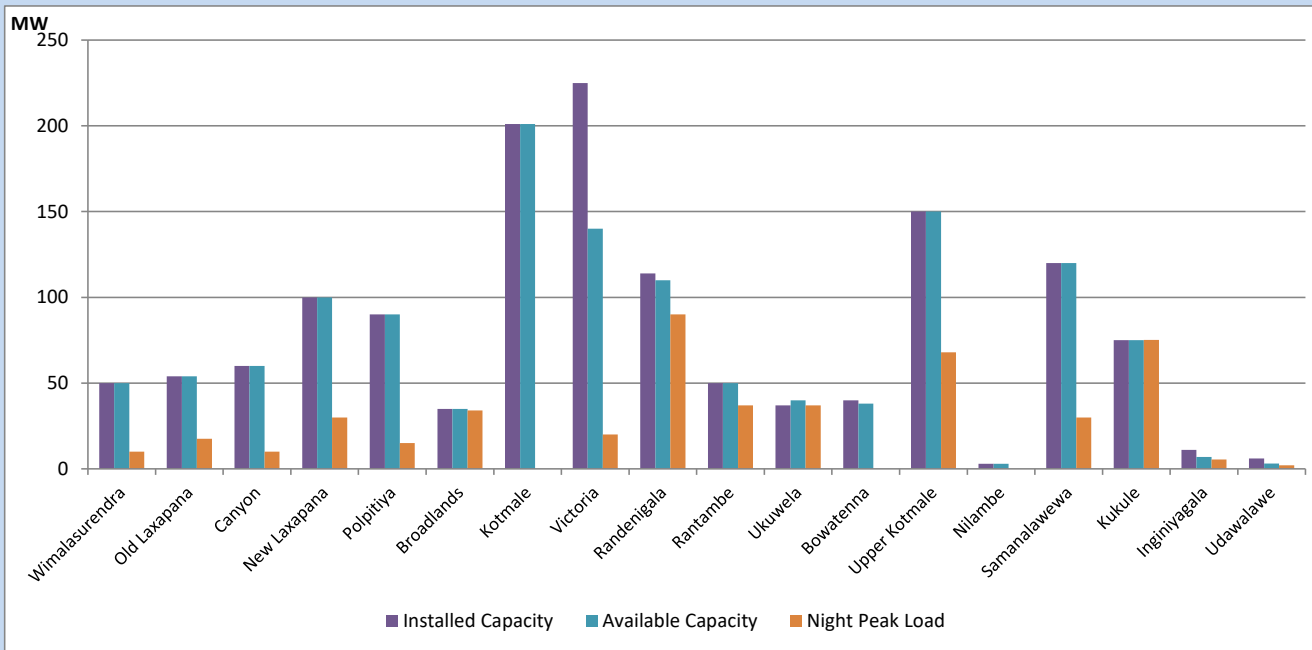


Available Generation is estimated based on plant availability at 6.00am on
Broadlands power plant is operating in the Commissioning Stage

June 13, 2023

Major Hydro Plant Loading at Night Peak

June 12, 2023



Note- Plant availability is recorded at 6.00 am on
Broadlands power plant is operating in the Commissioning Stage

June 13, 2023

Summary of Major Plant performance

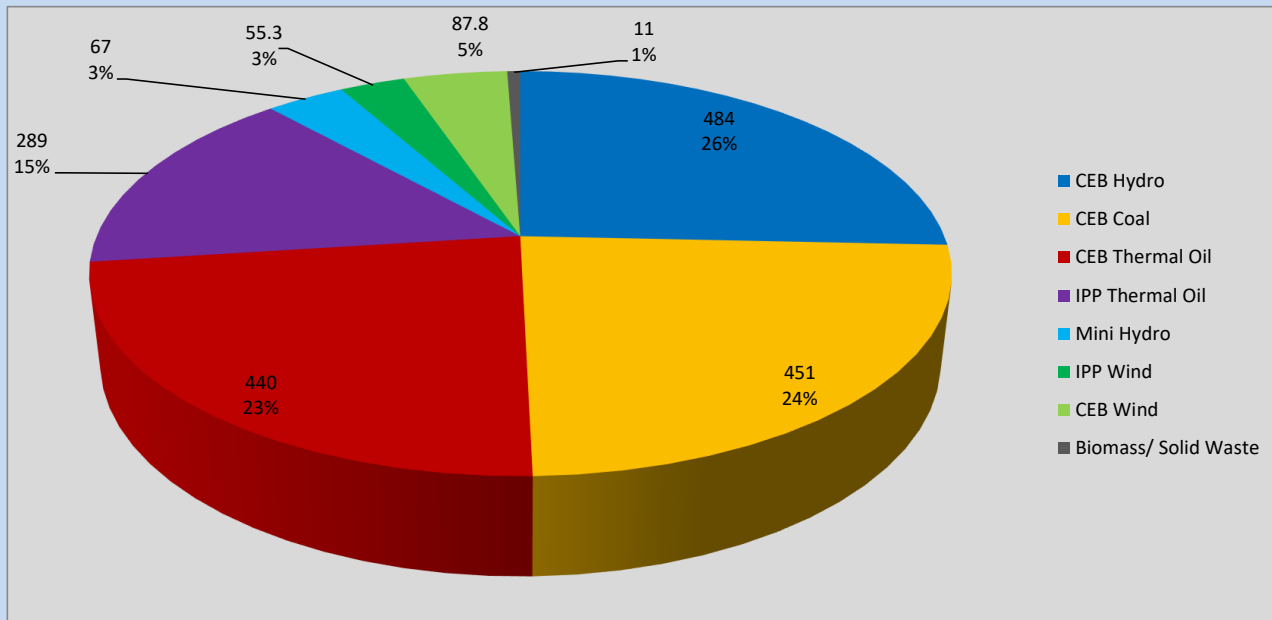
Plant	Installed Capacity	Plant Availability	Night peak Load	Plant Dispatch
	(MW)	(MW)	(MW)	(MWh)
Wimalasurendra	50	50	10	57
Old Laxapana	54	54	18	424
Canyon	60	60	10	177
New Laxapana	100	100	30	897
Polpitiya	90	90	15	804
Broadlands	35	35	34	277
Kotmale	201	201	0	490
Victoria	225	140	20	490
Randenigala	114	110	90	1,104
Rantambe	50	50	37	468
Ukuwela	37	40	37	448
Bowatenna	40	38	0	0
Upper Kotmale	150	150	68	444
Nilambe	3	3	0	4
Samanalawewa	120	120	30	233
Kukule	75	75	75	1,842
Inginiyagala	11	7	5	115
Udawalawe	6	3	2	39
Puttalam Coal I	270	197	188	4,493
Puttalam Coal II	270	270	263	6,144
Puttalam Coal III	270	0	0	0
KPS Small GTs	64	0	0	0
KPS GT 7	115	115	99	145
KCCP	161	158	148	3,424
Sapugaskanda A	70	32	30	624
Sapugaskanda B	70	63	63	1,342
Uthura Janani	26	24	23	351
Barge CEB	60	60	50	867
CEB-Hambantota	30	18	18	114
CEB-Mathugama	20	11	9	54
ACE Matara	24	0	0	0
Asia Power	50	0	0	0
KCCPS -2	163	152	156	2,075
West Coast	270	270	289	5,812
Nothern Power	36	0	0	0
ACE Embilipitiya	93	0	0	0
Total	3,483	2,696	2,038	39,848

Plant availability is the availability recorded at 6 am on

June 13, 2023

Contribution to the Night Peak in MW

June 12, 2023

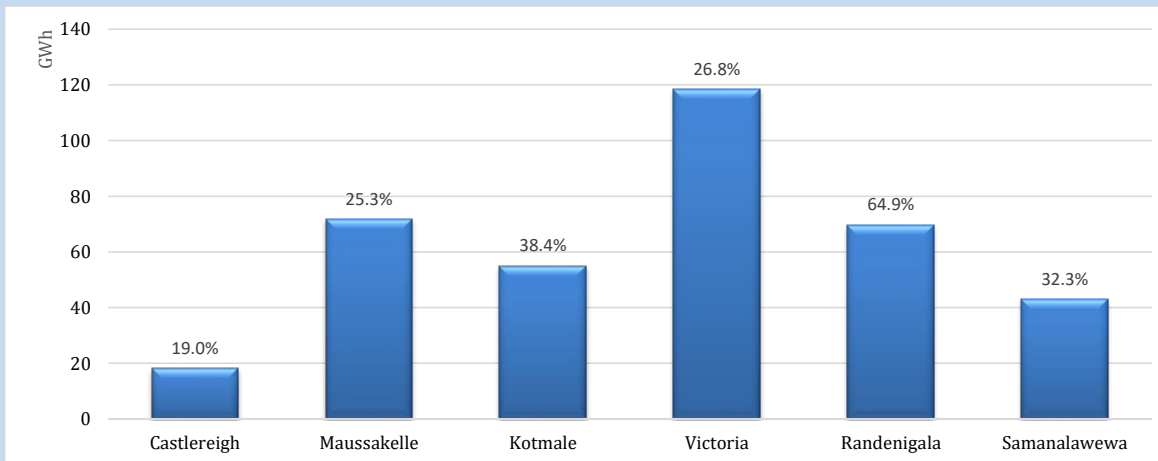


Night Peak*	2,041 MW
Day Peak Maximum Demand	1,927 MW
Day Peak Minimum Demand	1,717 MW
Off Peak Minimum Demand	1,134 MW

Above figures are excluding contribution from roof top solar, non telemetered solar and mini hydro plants

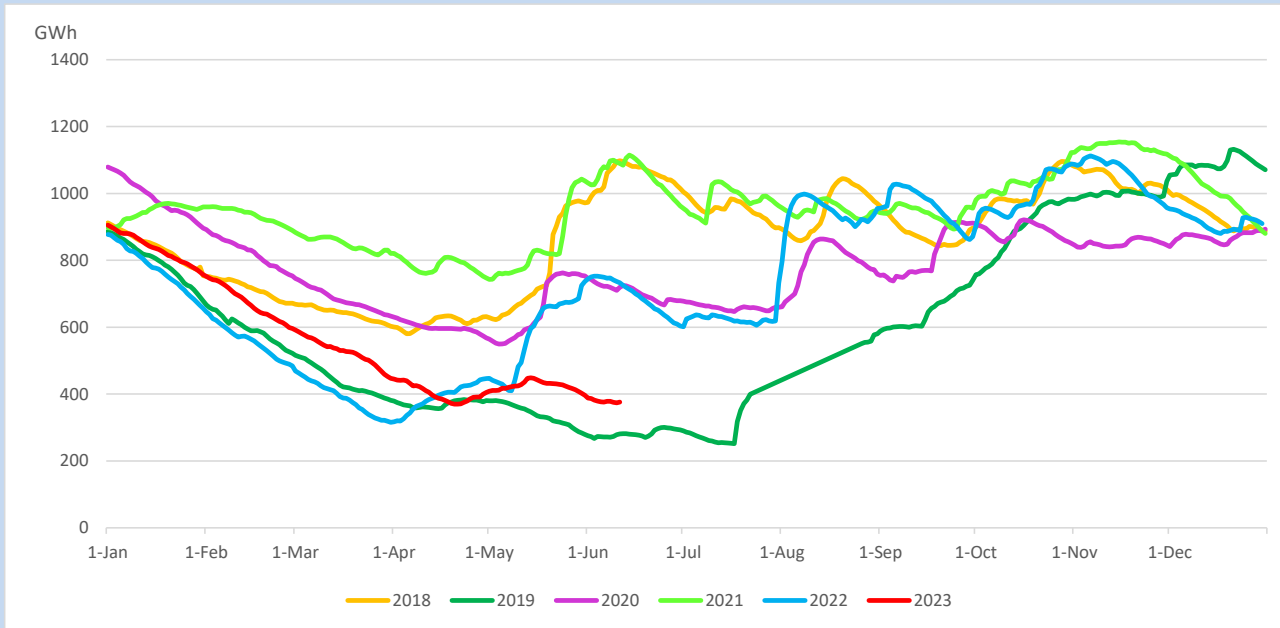
Reservoir Levels -

as at 06.00 Hr on June 13, 2023

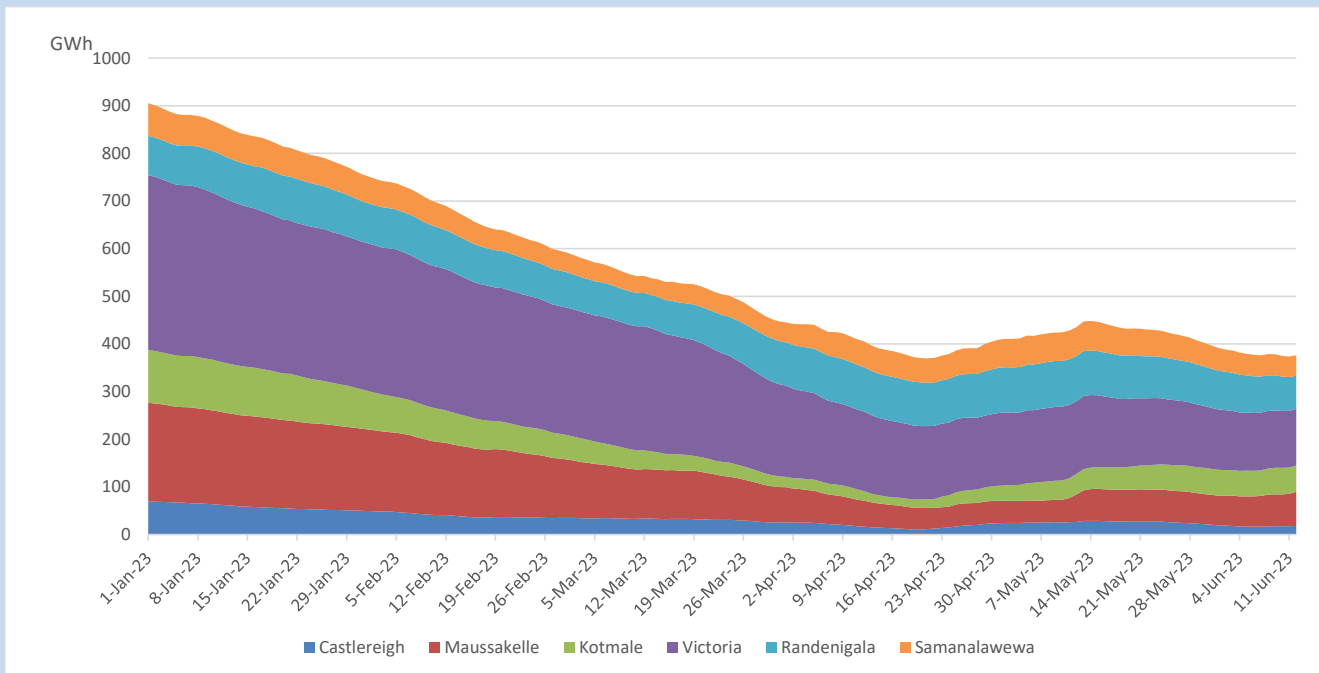


Total Reservoir Level	376.2 GWh
% of Total capacity	31.2%

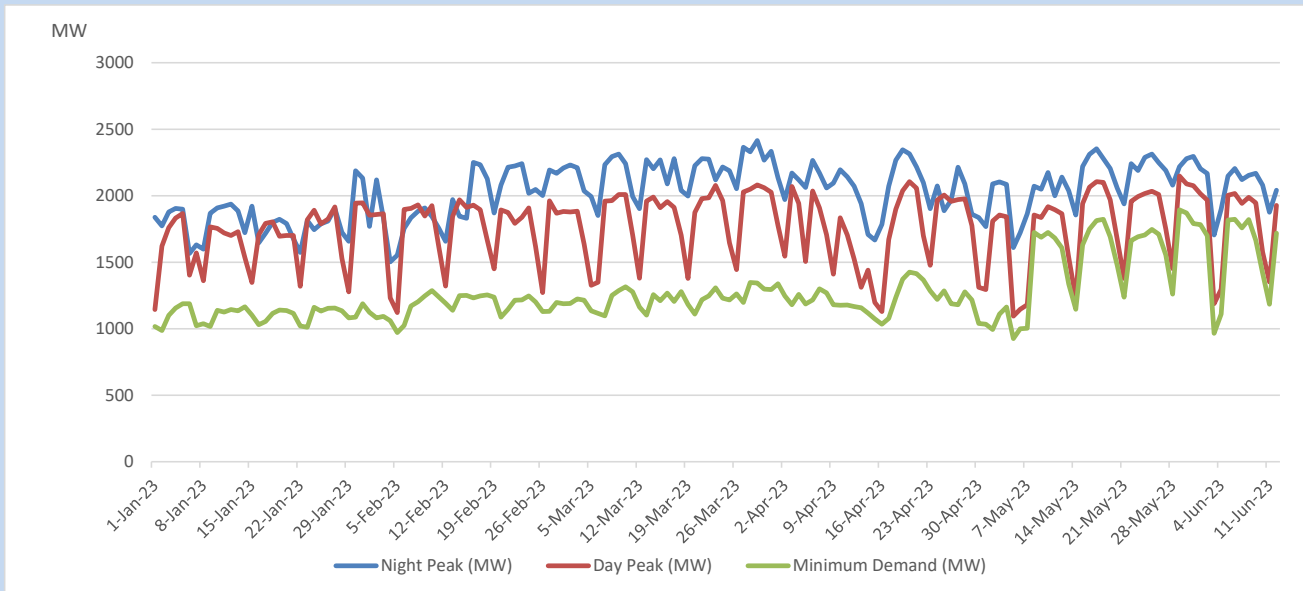
Comparison of Total Reservoir Storage Levels with Past Years



Variation of Major Hydro Reservoir Levels in the current year (GWh)



Variation of Demand during the current year

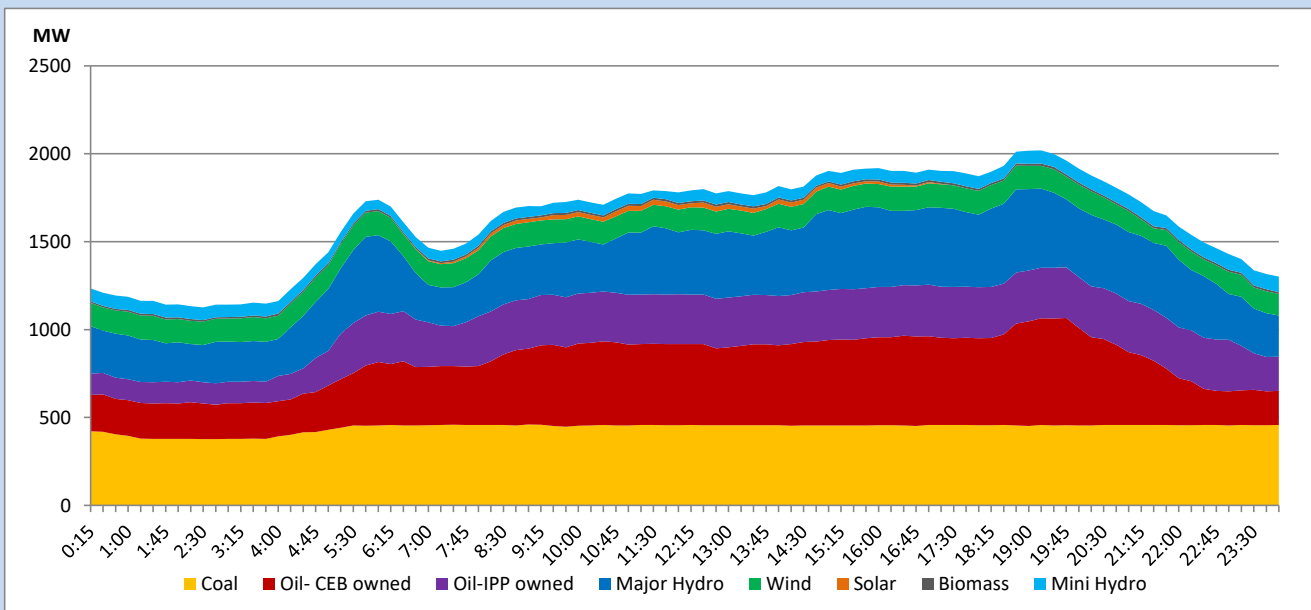


The above figures are excluding contribution from roof top solar, non telemetered solar and mini hydro plants

Daily Load Curve

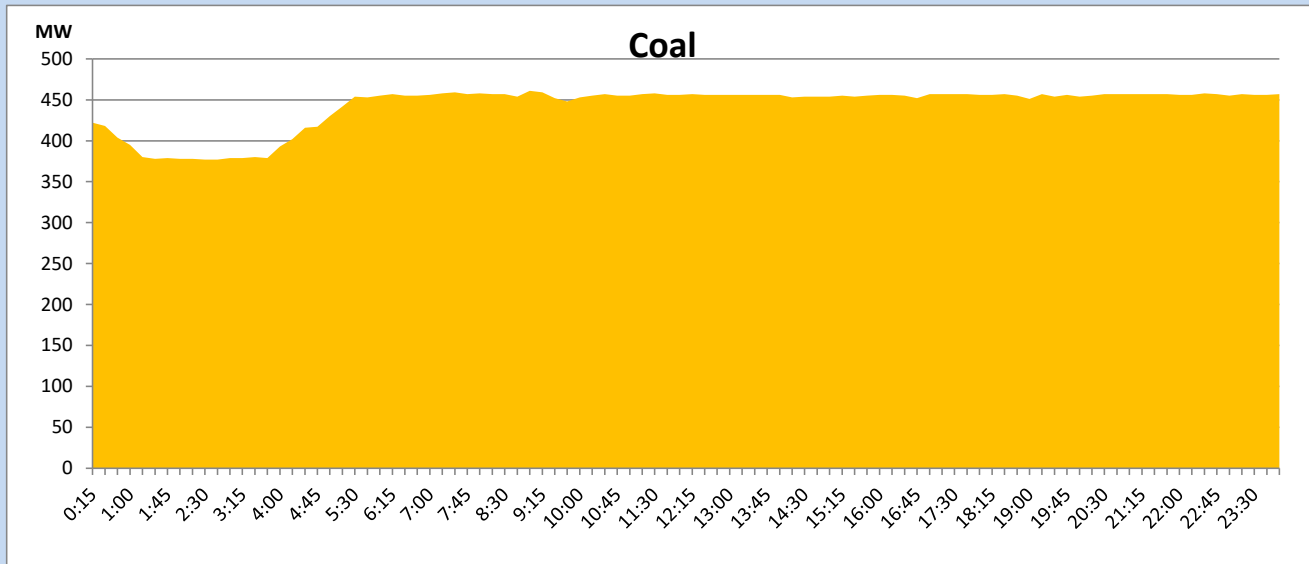
June 12, 2023

Solar and wind data is based on Telemetered Power Stations only



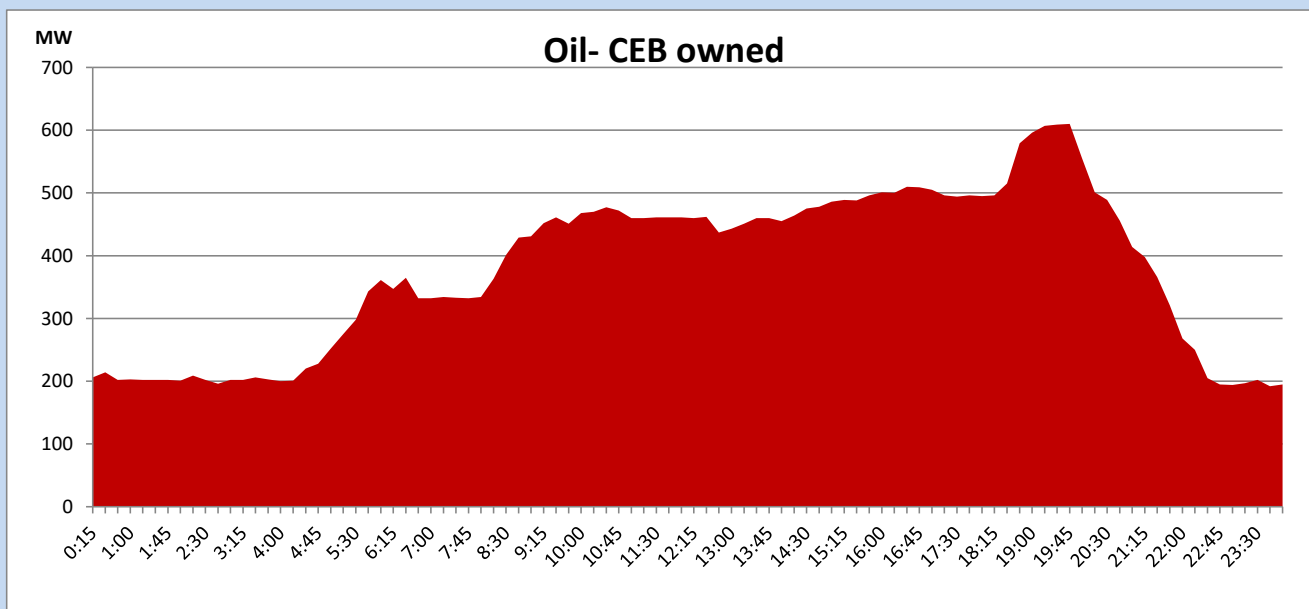
Coal Generation during

June 12, 2023



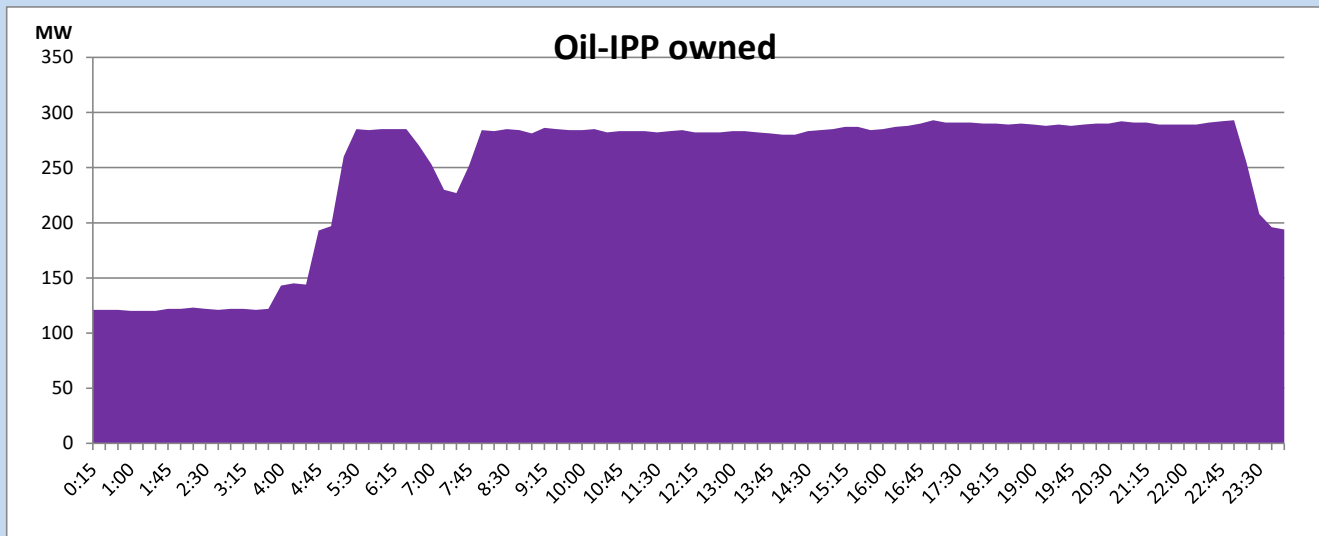
CEB Oil Plant Generation during

June 12, 2023



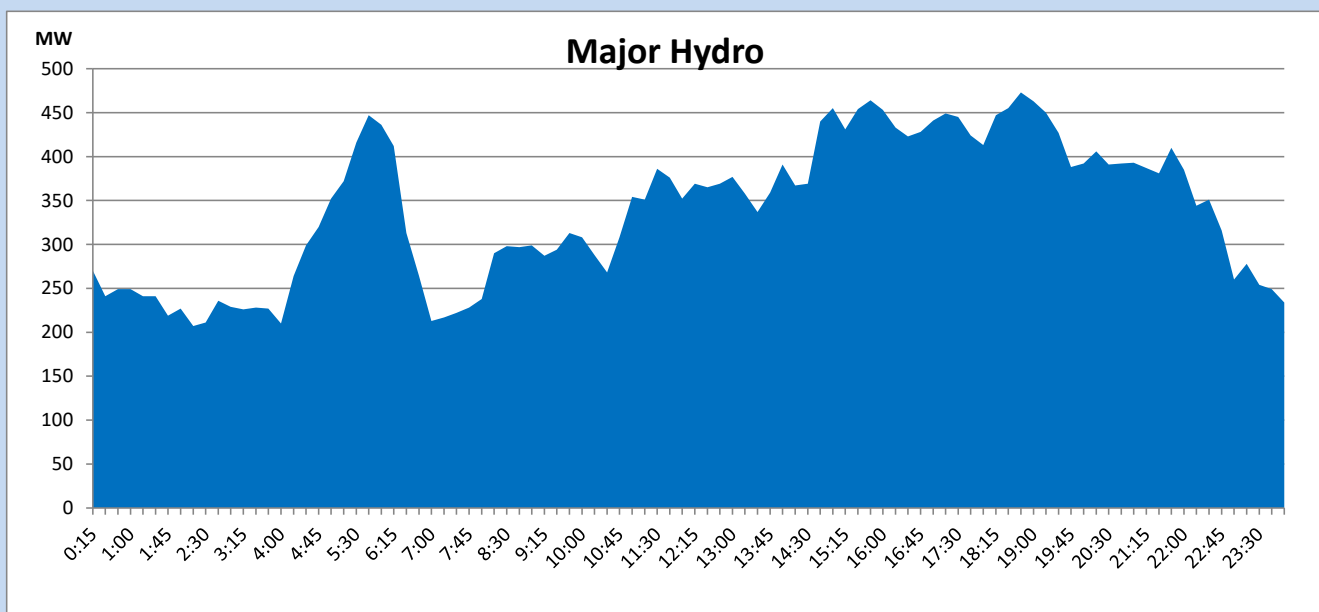
IPP Oil Plant Generation during

June 12, 2023



Major Hydro Generation during

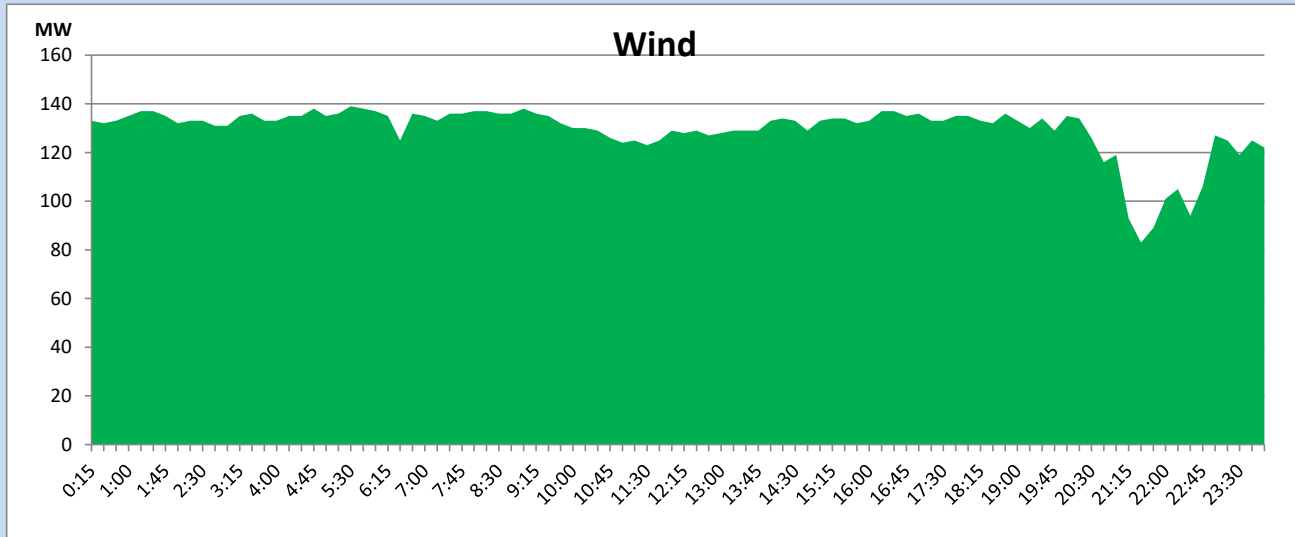
June 12, 2023



Wind Generation during

June 12, 2023

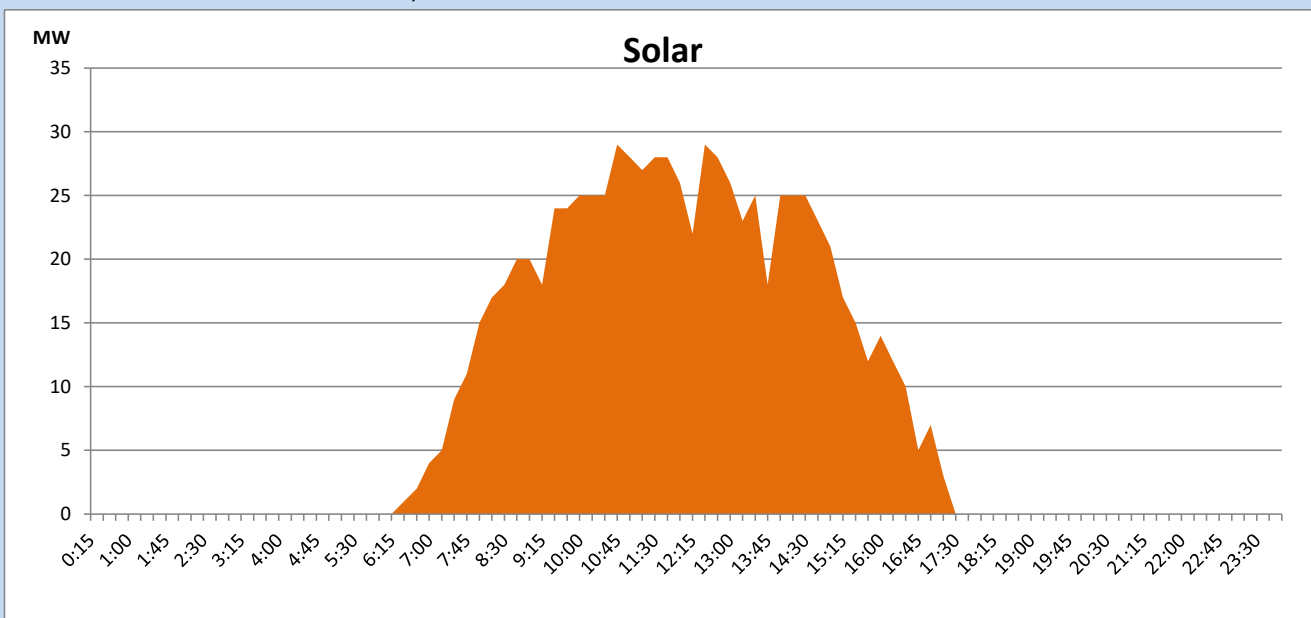
Based on Telemetered Power Stations only



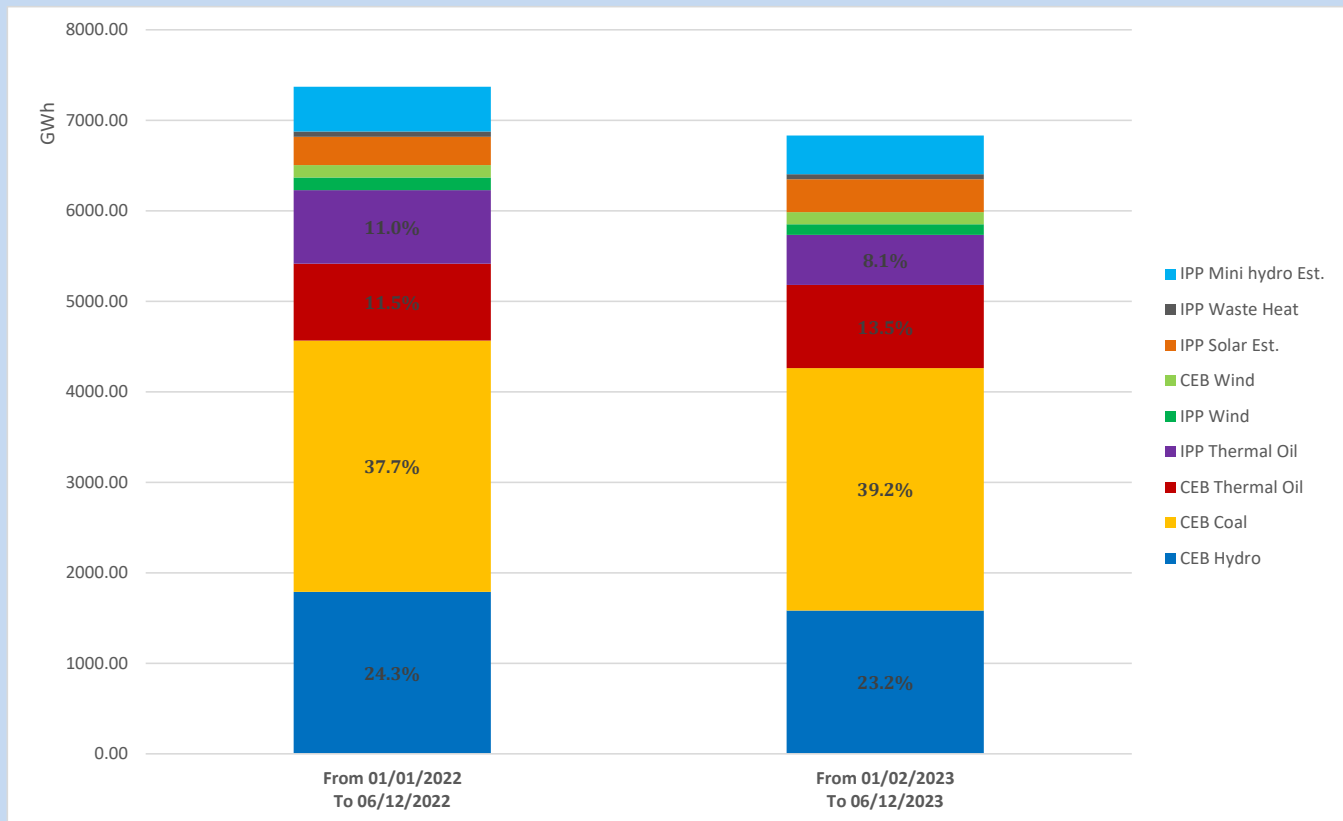
Solar Generation during

June 12, 2023

Based on Telemetered Power Stations only



Cumulative Dispatch Comparison with Last Year



The above figures are including contribution from roof top solar, non telemetered solar and mini hydro plants

Thermal Plant Fuel types

Power Station	Primary Fuel
CEB Thermal	
Sapugaskanda 1	Heavy Fuel
Sapugaskanda 2	Heavy Fuel
Kelanitissa Small Gas Turbines	Auto Diesel
GT 7 - Kelanitissa	Auto Diesel
Kelanitissa CCY	Naphtha or Diesel
Lakvijaya 1	Coal
Lakvijaya 2	Coal
Lakvijaya 3	Coal
Uthuru Janani	Heavy Fuel
Barge CEB	Heavy Fuel
KCCPS -2	Auto Diesel

Power Station	Primary Fuel
Private Thermal	
West Coast	Auto Diesel / Heavy Fuel

Major Incidents reported during the day

June 12, 2023

01) Kukule spilling started at 21:40hrs and continues to present hour.