

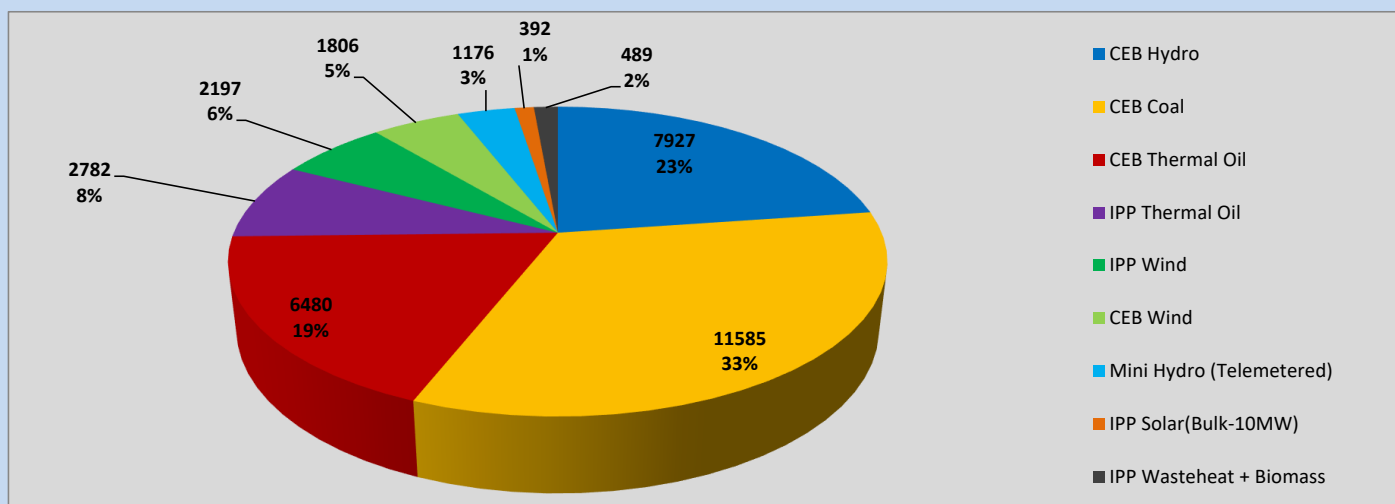
Generation and Reservoirs Statistics

June 11, 2023



PUBLIC UTILITIES COMMISSION OF SRI LANKA

Daily Generation Mix in MWh



Total Generation (Excluding estimated figures) =

34,834 MWh

Estimated figures of CEB generation report

Estimated unserved energy = 0.00 GWh

Estimated Mini Hydro (Non telemetered) = 2904 MWh

Estimated IPP Solar PV (Bulk 1-10MW) = 304 MWh

Estimated Solar Roof Top PV = 1890 MWh

Cumulative Dispatch

Following data excludes the contribution from roof top solar, non telemetered solar and mini hydro plants

For Current Month

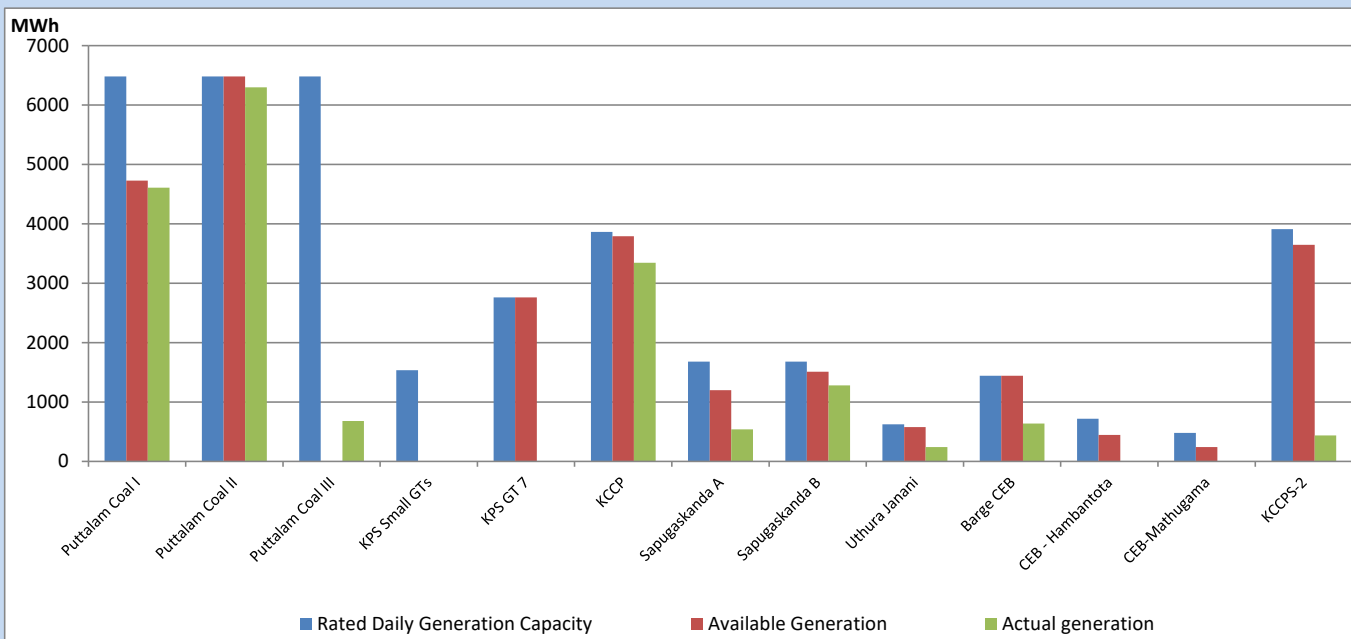
Category	Dispatch (GWh)	
CEB Hydro	96	22.08%
CEB Coal	175	40.30%
CEB Thermal Oil	64	14.82%
IPP Thermal	30	7.02%
SPP Wind	24	5.43%
CEB Wind	21	4.78%
Mini Hydro (Telemetered)	15	3.51%
IPP Solar(Bulk-10MW)	4	0.91%
IPP Wasteheat + BMP	5	1.16%
Total	435	

For Current Year

Category	Dispatch (GWh)	
CEB Hydro	1,577	25.46%
CEB Coal	2,670	43.12%
CEB Thermal Oil	912	14.72%
IPP Thermal	547	8.84%
SPP Wind	114	1.84%
CEB Wind	132	2.13%
Mini Hydro (Telemetered)	141	2.28%
IPP Solar(Bulk-10MW)	47	0.76%
IPP Wasteheat	52	0.84%
Total	6,193	

CEB owned Thermal Plant Dispatch

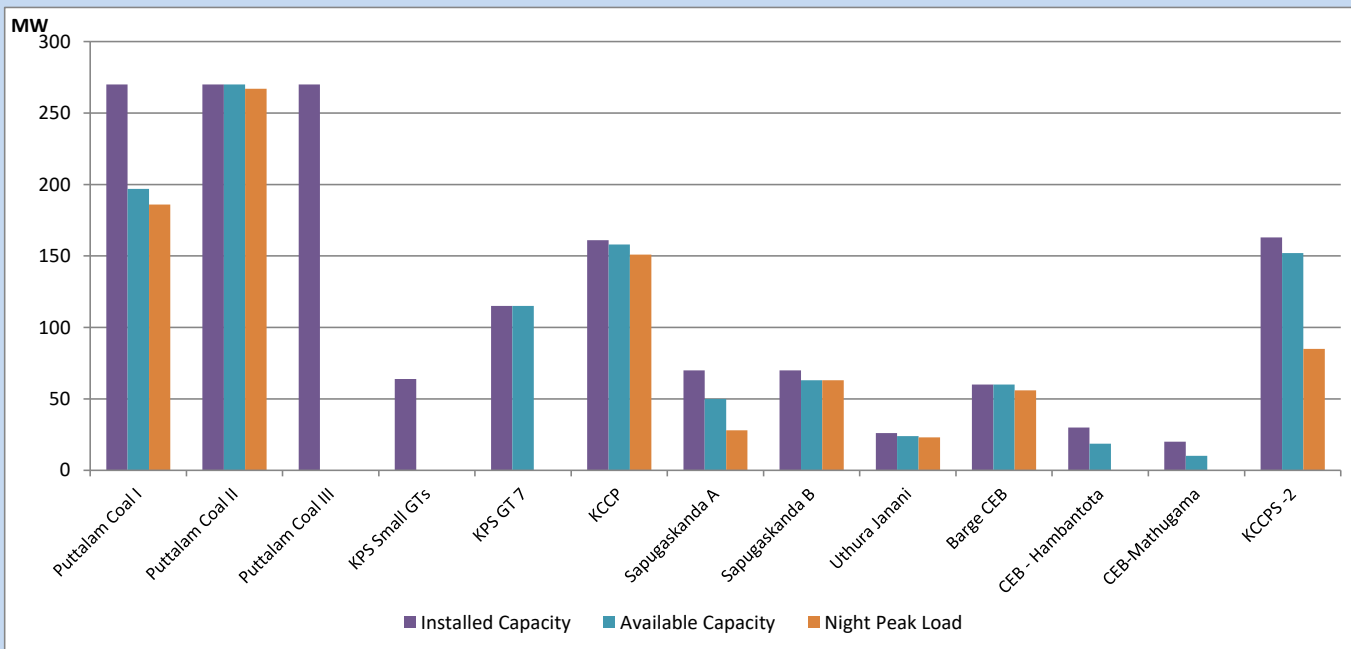
June 11, 2023



Available Generation is estimated based on plant availability at 6.00am on

June 12, 2023

CEB owned Thermal Plant Loading at the Night Peak



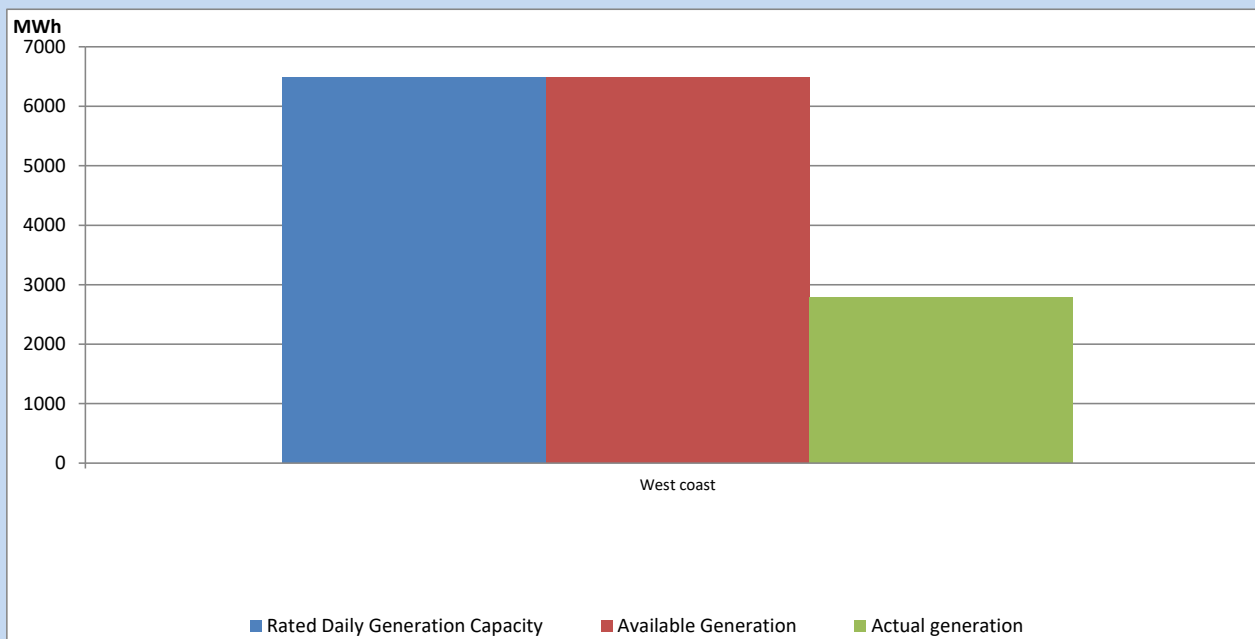
Note-

Plant availability is recorded at 6.00 am on

June 12, 2023

IPP owned Thermal Plant Dispatch

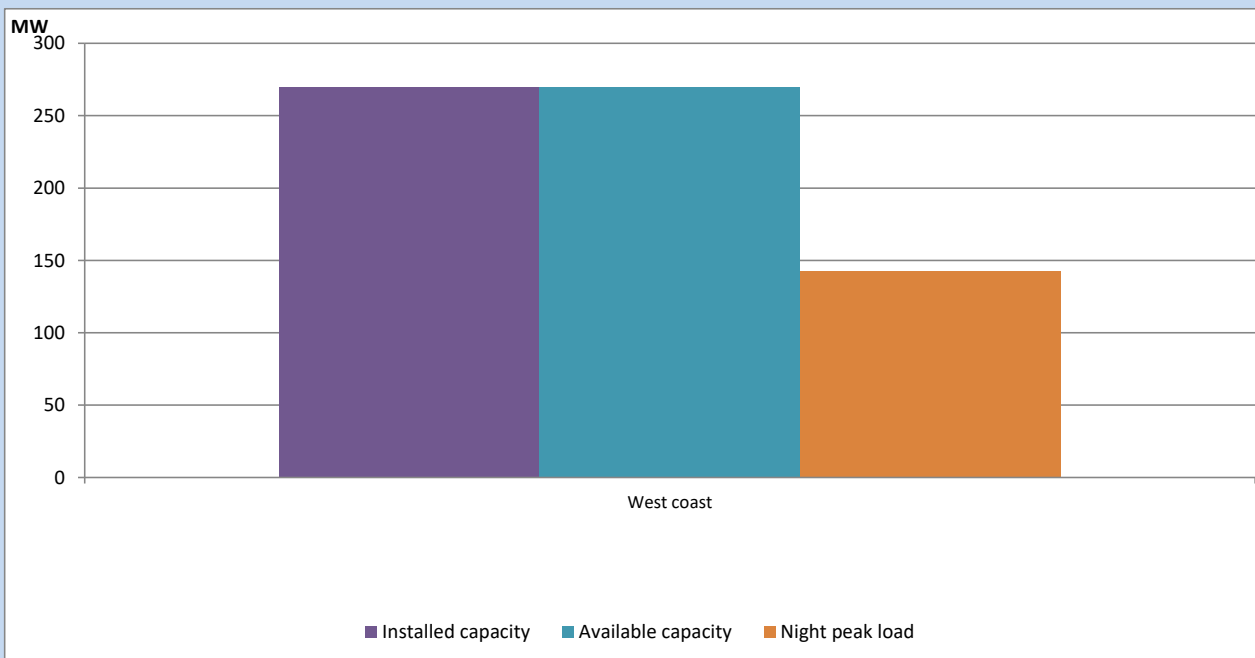
June 11, 2023



Available Generation is estimated based on plant availability at 6.00am on

June 12, 2023

IPP owned Thermal Plant Loading at the Night Peak

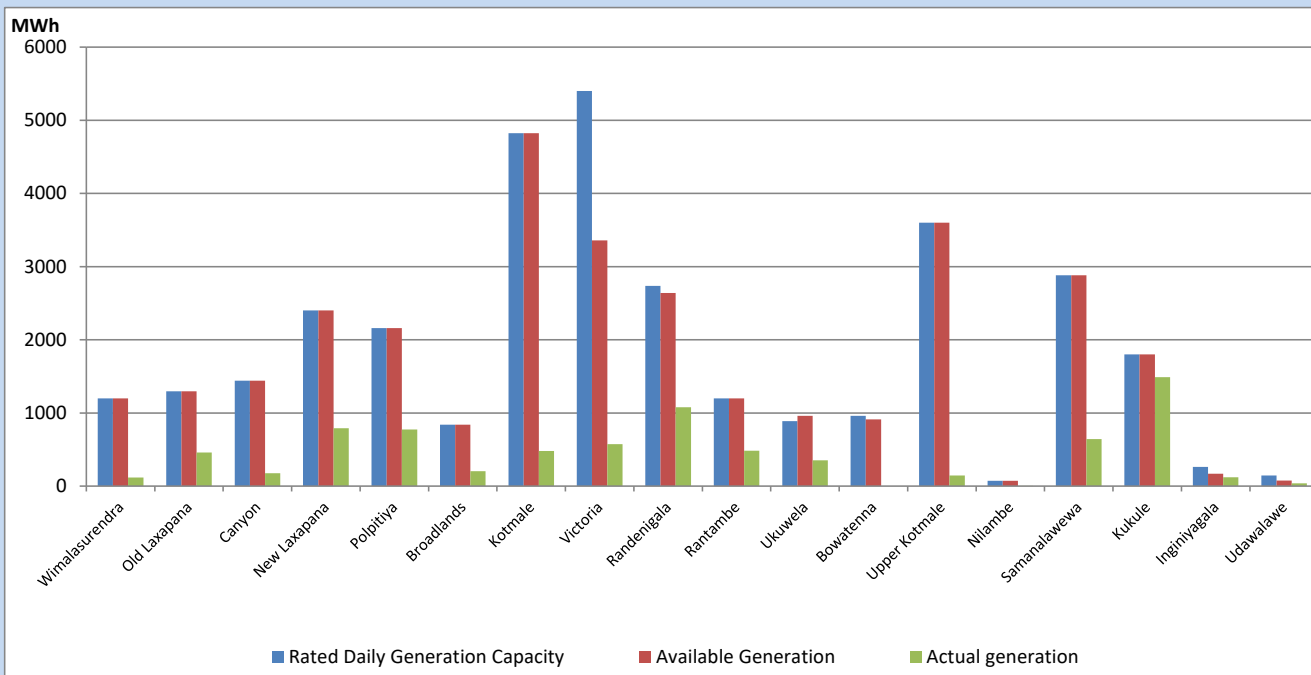


Note- Plant availability is recorded at 6.00 am on

June 12, 2023

Major Hydro Plant Dispatch

June 11, 2023

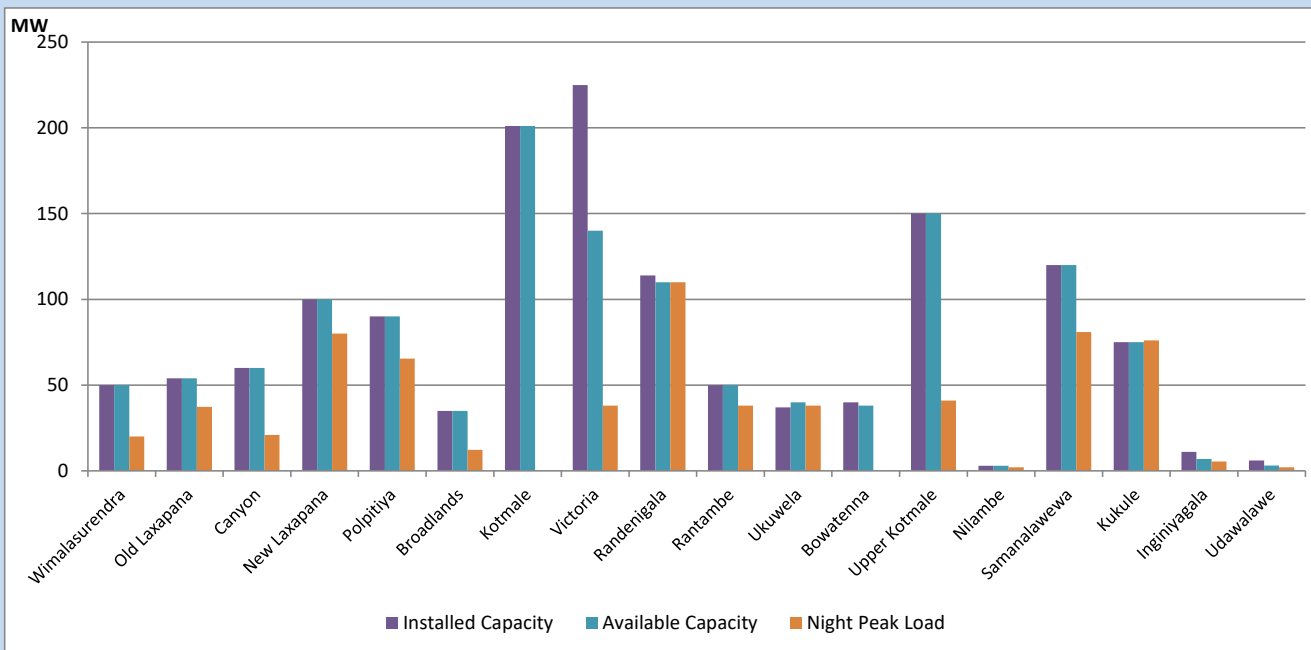


Available Generation is estimated based on plant availability at 6.00am on
Broadlands power plant is operating in the Commissioning Stage

June 12, 2023

Major Hydro Plant Loading at Night Peak

June 11, 2023



Note- Plant availability is recorded at 6.00 am on June 12, 2023

Broadlands power plant is operating in the Commissioning Stage

Summary of Major Plant performance

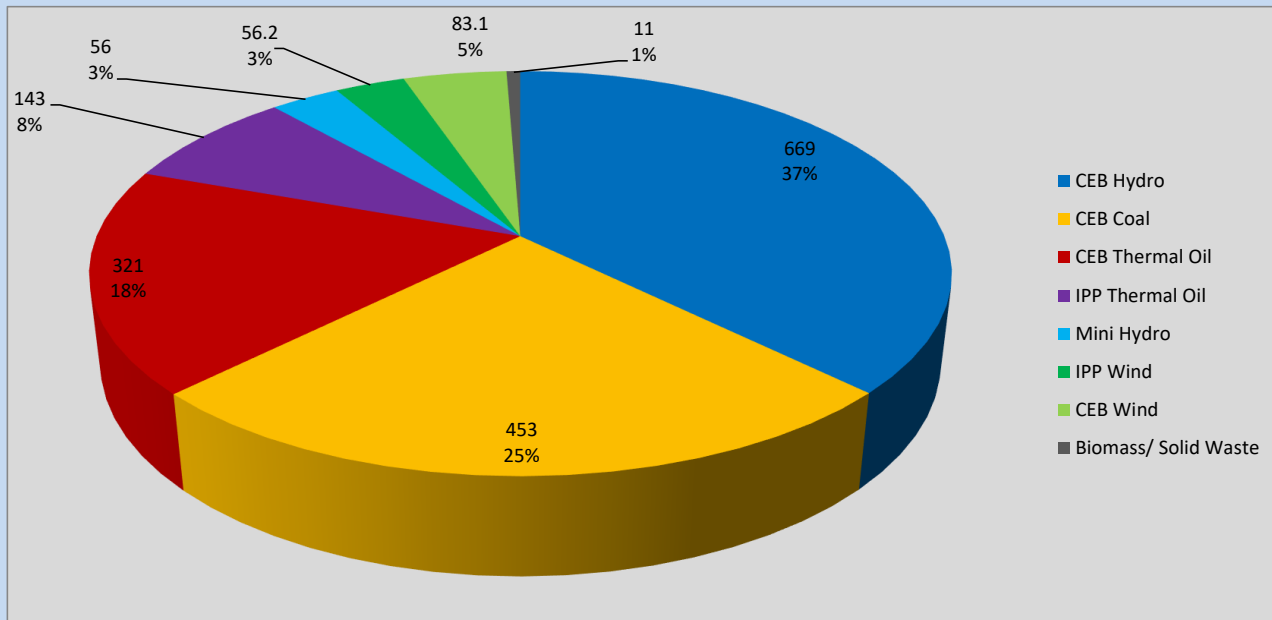
Plant	Installed Capacity	Plant Availability	Night peak Load	Plant Dispatch
	(MW)	(MW)	(MW)	(MWh)
Wimalasurendra	50	50	20	117
Old Laxapana	54	54	37	459
Canyon	60	60	21	177
New Laxapana	100	100	80	790
Polpitiya	90	90	66	774
Broadlands	35	35	12	203
Kotmale	201	201	0	480
Victoria	225	140	38	573
Randenigala	114	110	110	1,079
Rantambe	50	50	38	482
Ukuwela	37	40	38	353
Bowatenna	40	38	0	0
Upper Kotmale	150	150	41	146
Nilambe	3	3	2	2
Samanalawewa	120	120	81	642
Kukule	75	75	76	1,490
Inginiyagala	11	7	5	121
Udawalawe	6	3	2	39
Puttalam Coal I	270	197	186	4,609
Puttalam Coal II	270	270	267	6,298
Puttalam Coal III	270	0	0	678
KPS Small GTs	64	0	0	0
KPS GT 7	115	115	0	0
KCCP	161	158	151	3,344
Sapugaskanda A	70	50	28	540
Sapugaskanda B	70	63	63	1,279
Uthura Janani	26	24	23	242
Barge CEB	60	60	56	638
CEB-Hambantota	30	19	0	0
CEB-Mathugama	20	10	0	0
ACE Matara	24	0	0	0
Asia Power	50	0	0	0
KCCPS -2	163	152	85	437
West Coast	270	270	143	2,782
Nothern Power	36	0	0	0
ACE Embilipitiya	93	0	0	0
Total	3,483	2,714	1,876	34,834

Plant availability is the availability recorded at 6 am on

June 12, 2023

Contribution to the Night Peak in MW

June 11, 2023

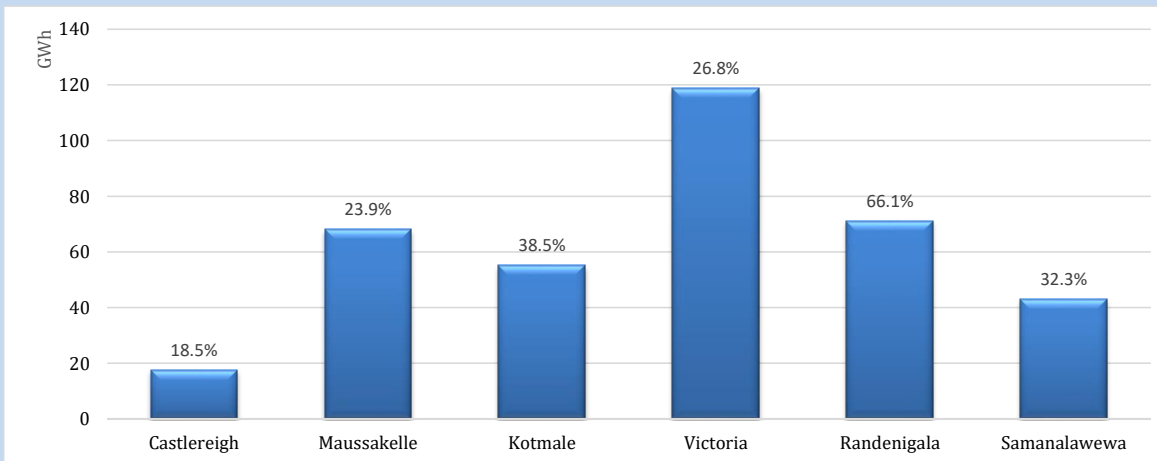


Night Peak*	1,877 MW
Day Peak Maximum Demand	1,351 MW
Day Peak Minimum Demand	1,185 MW
Off Peak Minimum Demand	1,244 MW

Above figures are excluding contribution from roof top solar, non telemetered solar and mini hydro plants

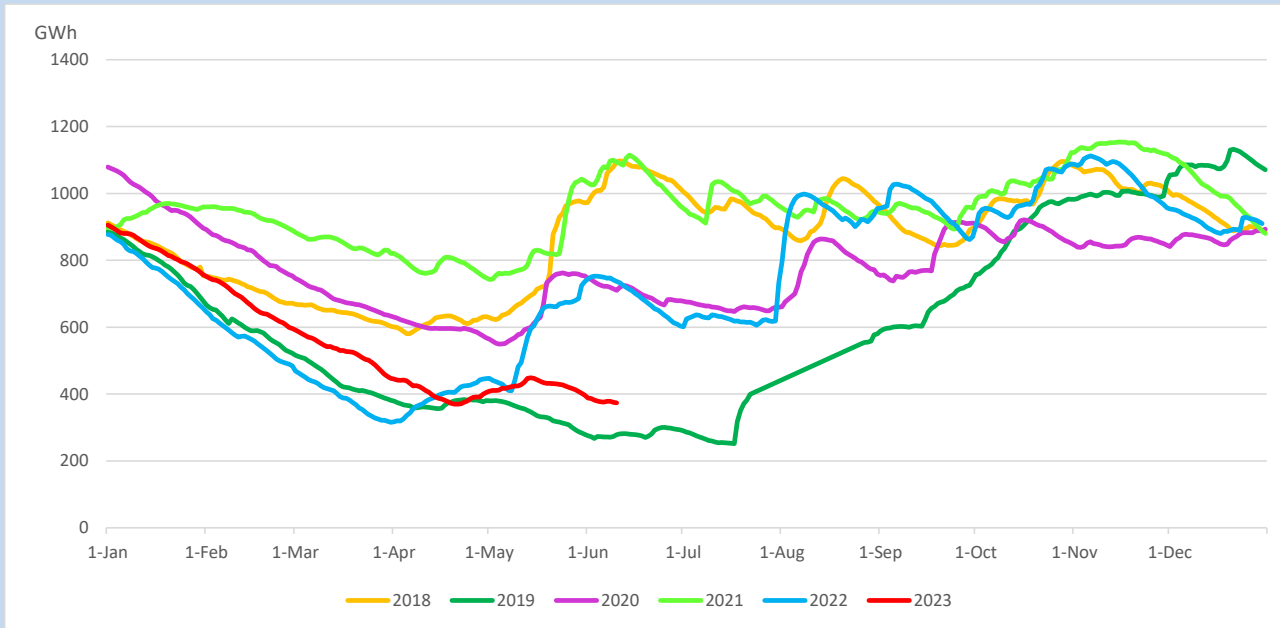
Reservoir Levels -

as at 06.00 Hr on June 12, 2023

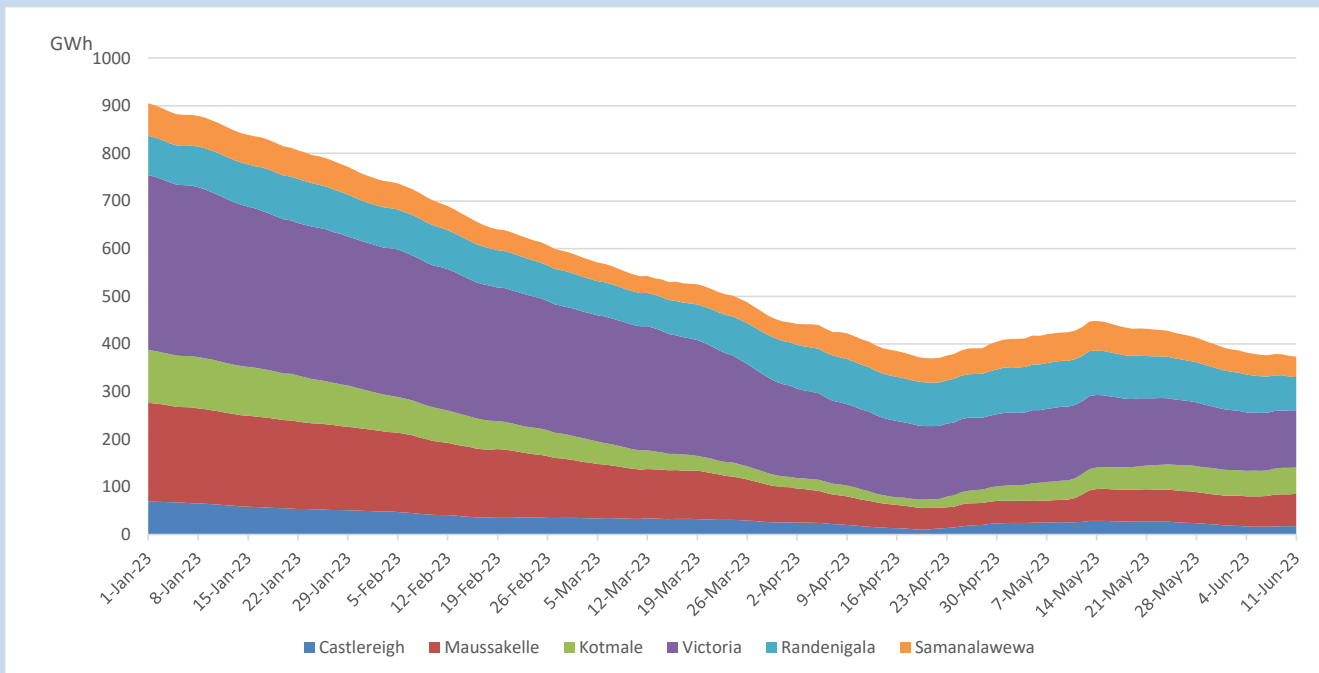


Total Reservoir Level	373.6 GWh
% of Total capacity	31.0%

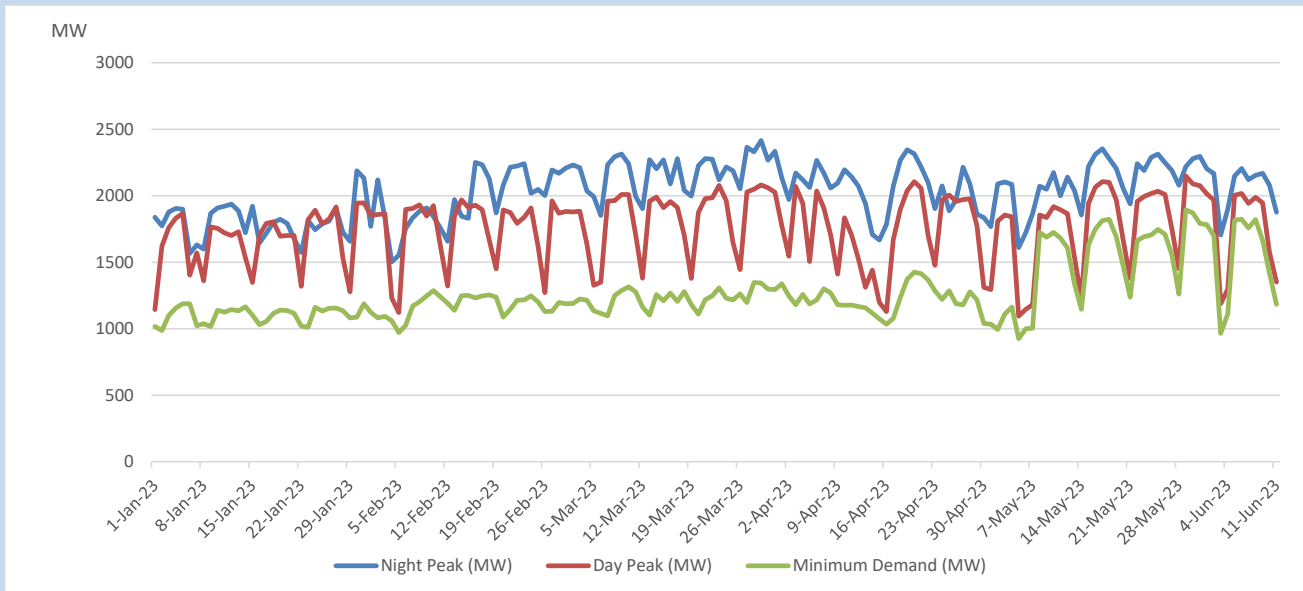
Comparison of Total Reservoir Storage Levels with Past Years



Variation of Major Hydro Reservoir Levels in the current year (GWh)



Variation of Demand during the current year

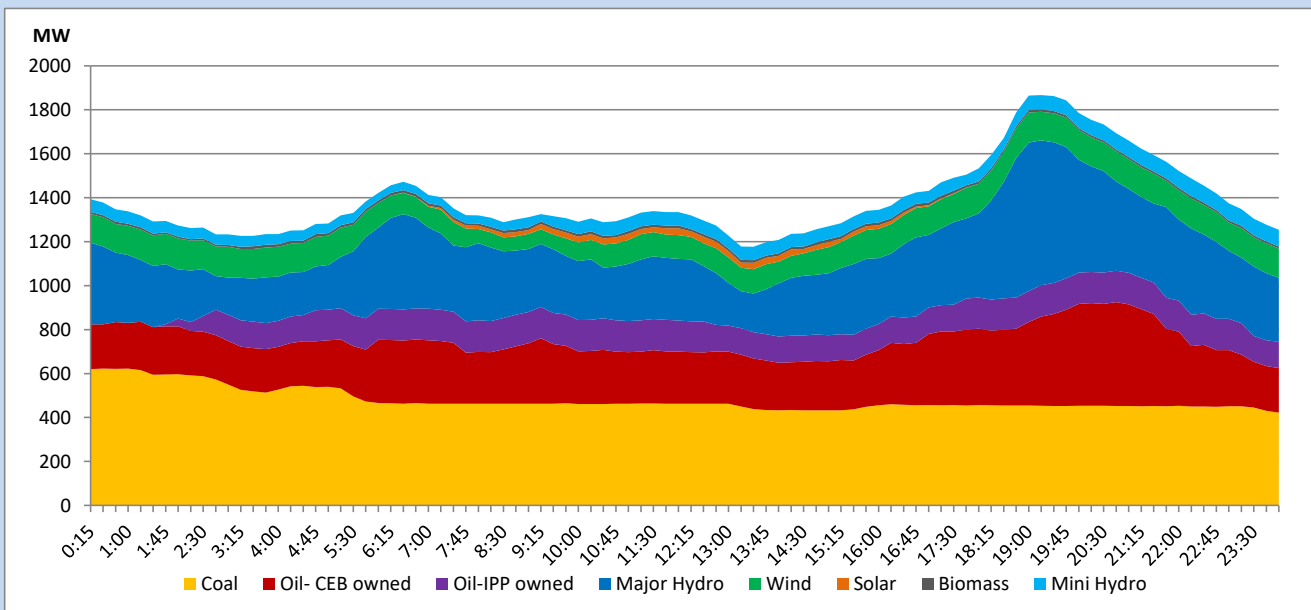


The above figures are excluding contribution from roof top solar, non telemetered solar and mini hydro plants

Daily Load Curve

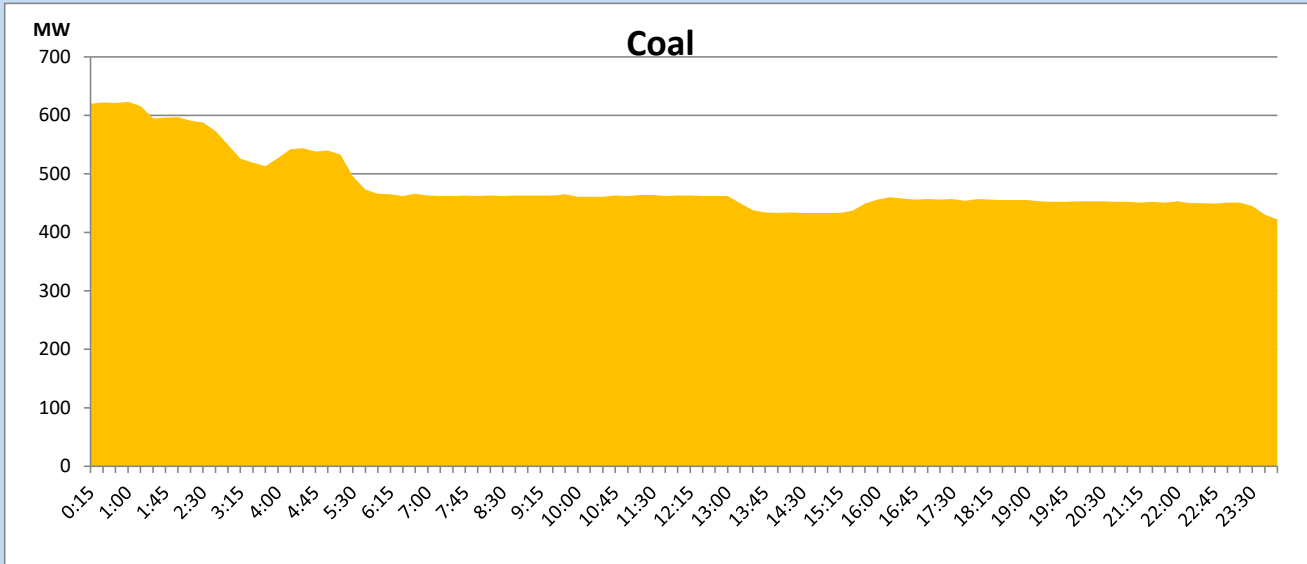
June 11, 2023

Solar and wind data is based on Telemetered Power Stations only



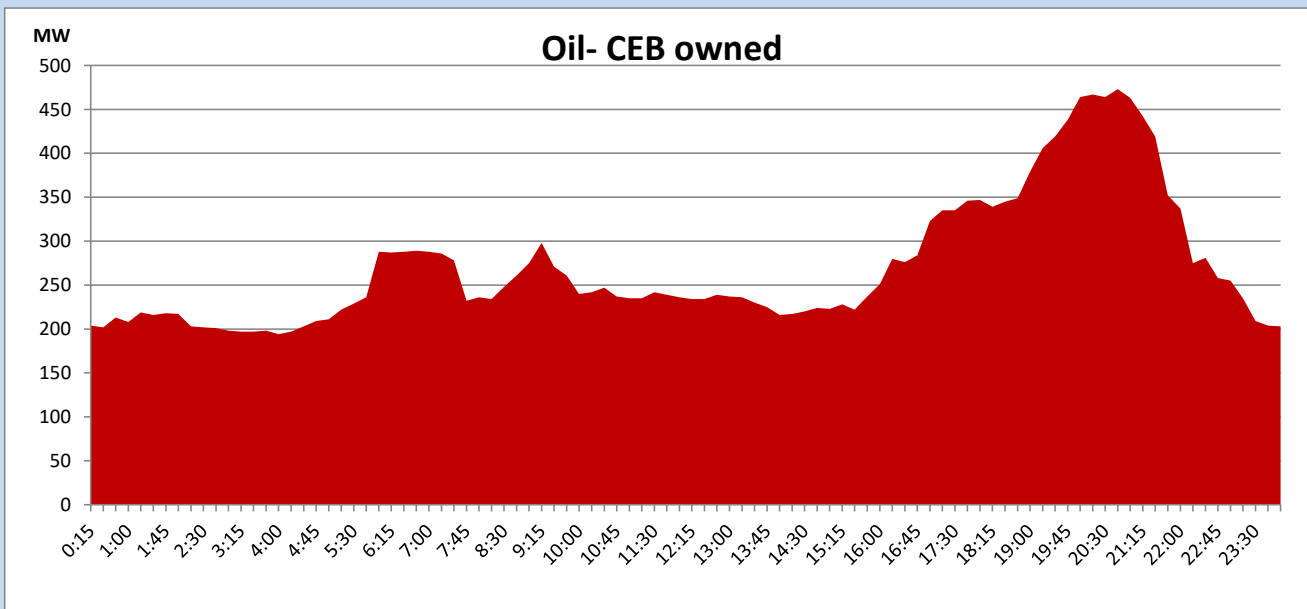
Coal Generation during

June 11, 2023



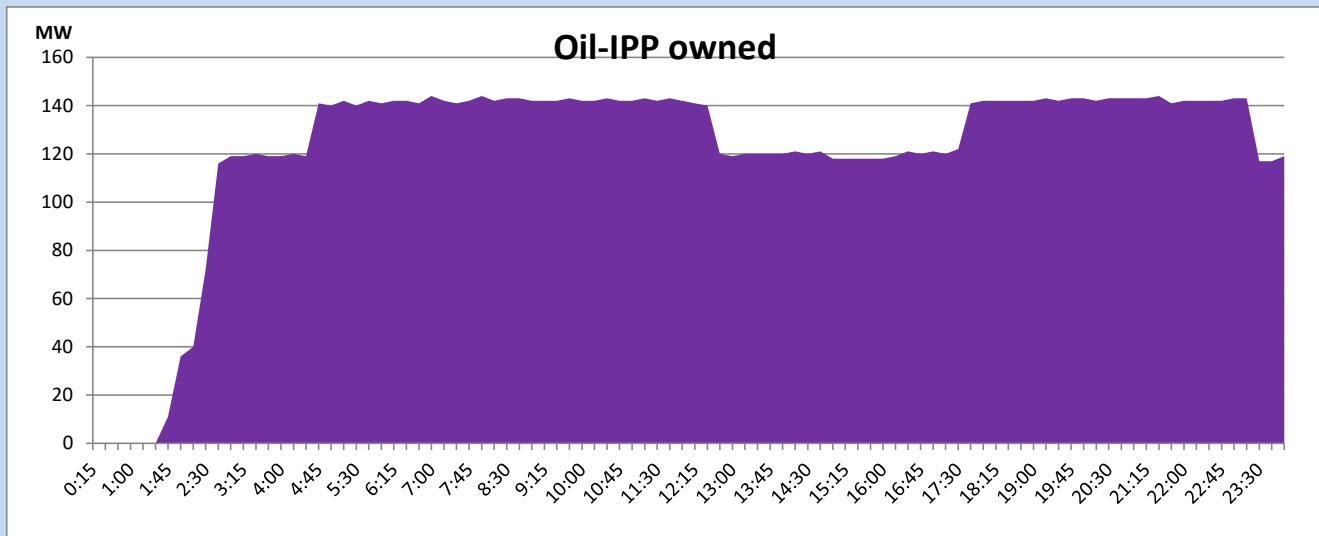
CEB Oil Plant Generation during

June 11, 2023



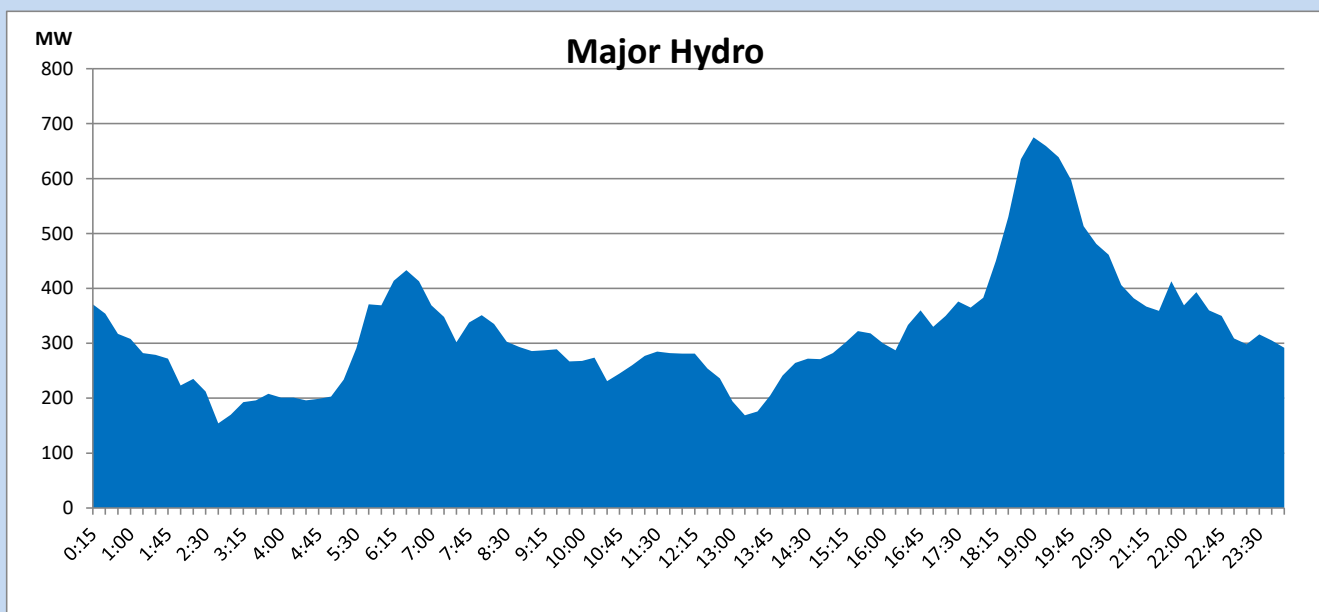
IPP Oil Plant Generation during

June 11, 2023



Major Hydro Generation during

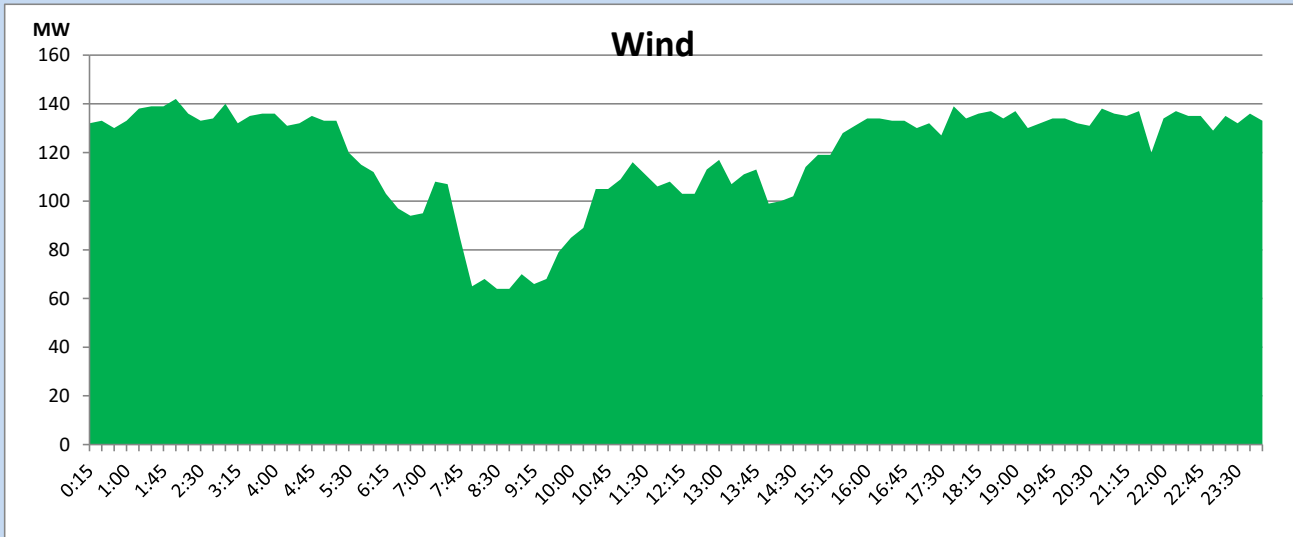
June 11, 2023



Wind Generation during

June 11, 2023

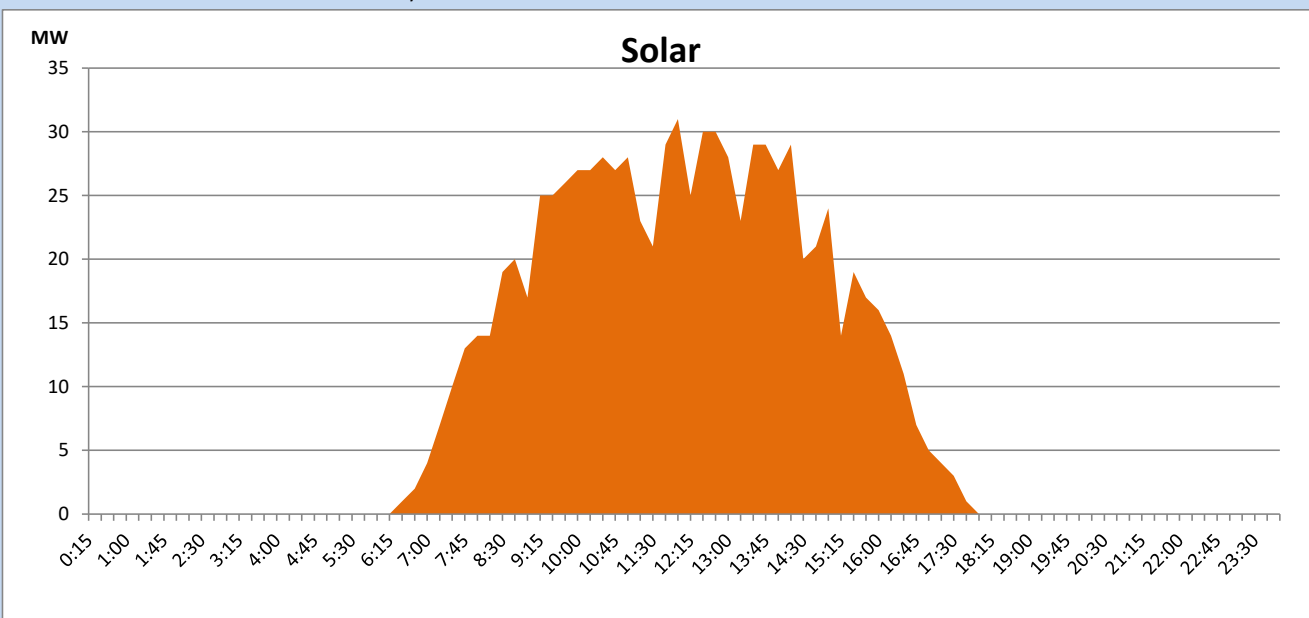
Based on Telemetered Power Stations only



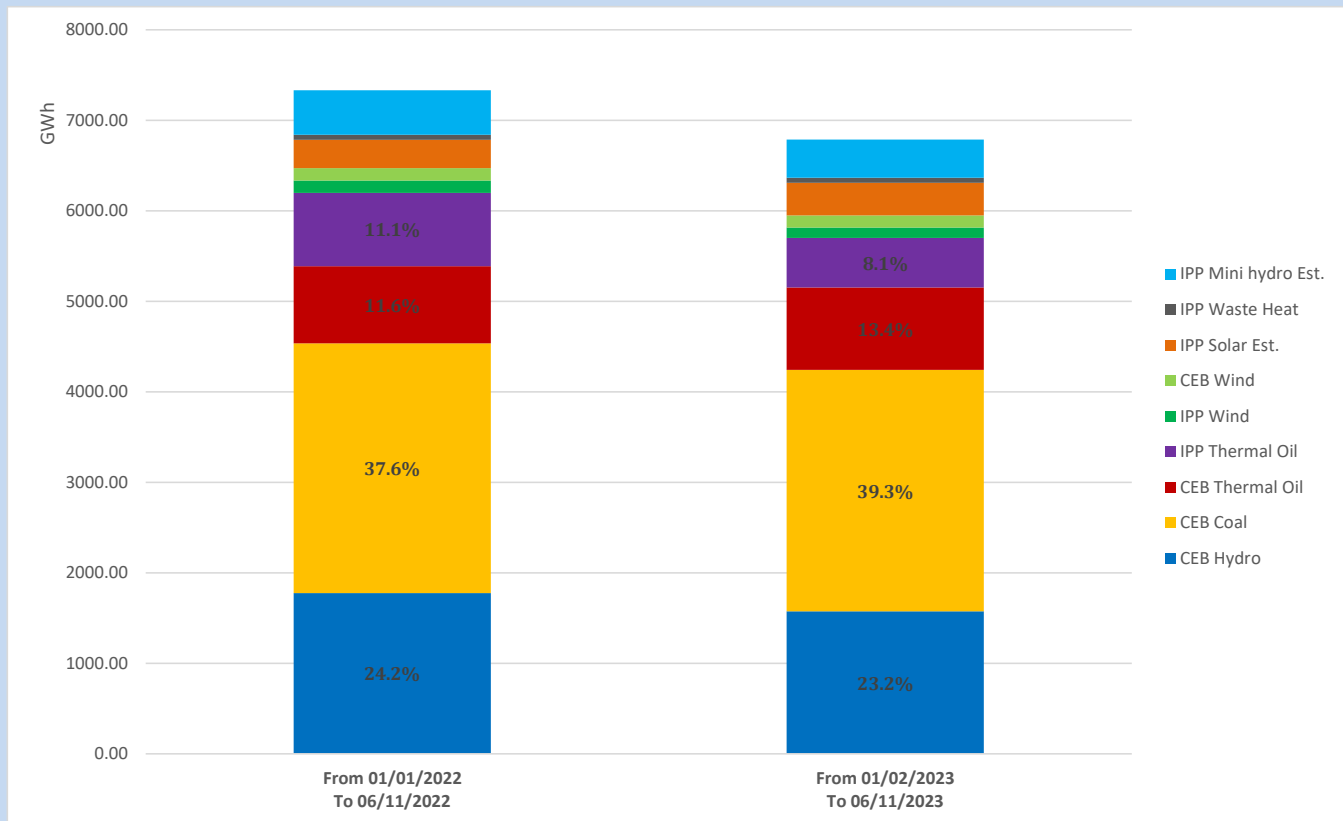
Solar Generation during

June 11, 2023

Based on Telemetered Power Stations only



Cumulative Dispatch Comparison with Last Year



The above figures are including contribution from roof top solar, non telemetered solar and mini hydro plants

Thermal Plant Fuel types

Power Station	Primary Fuel
CEB Thermal	
Sapugaskanda 1	Heavy Fuel
Sapugaskanda 2	Heavy Fuel
Kelanitissa Small Gas Turbines	Auto Diesel
GT 7 - Kelanitissa	Auto Diesel
Kelanitissa CCY	Naphtha or Diesel
Lakvijaya 1	Coal
Lakvijaya 2	Coal
Lakvijaya 3	Coal
Uthuru Janani	Heavy Fuel
Barge CEB	Heavy Fuel
KCCPS -2	Auto Diesel

Power Station	Primary Fuel
Private Thermal	
West Coast	Auto Diesel / Heavy Fuel

Major Incidents reported during the day

June 11, 2023

01) Kolonnawa - Seethawaka 132kV cct tripped from Kolonnawa end and tripped & A/R from Seethawaka end at 07:10hrs due to the operation of distance protection. The cct was restored at 07:17hrs.

02) Kolonnawa - Seethawaka 132kV cct tripped & A/R from both ends at 07:47hrs due to the operation of distance protection. At the same time, Kolonnawa - Kosgama 132kV cct tripped & A/R from both ends due to the operation of distance protection

03) Horana - Kesbewa - Panadura cct tripped from Horana end and tripped & A/R from Kesbewa and Panadura end at 08:17hrs due to the operation of differential protection. At the same time Horana - Mathugama cct tripped from Horana end and Tripped & A/R from Mathugama end due to the operation of differential protection causing Horana GSS to be dead. Both ccts were restored by 8:31hrs and all the affected feeders were normalized by 8:42hrs.