

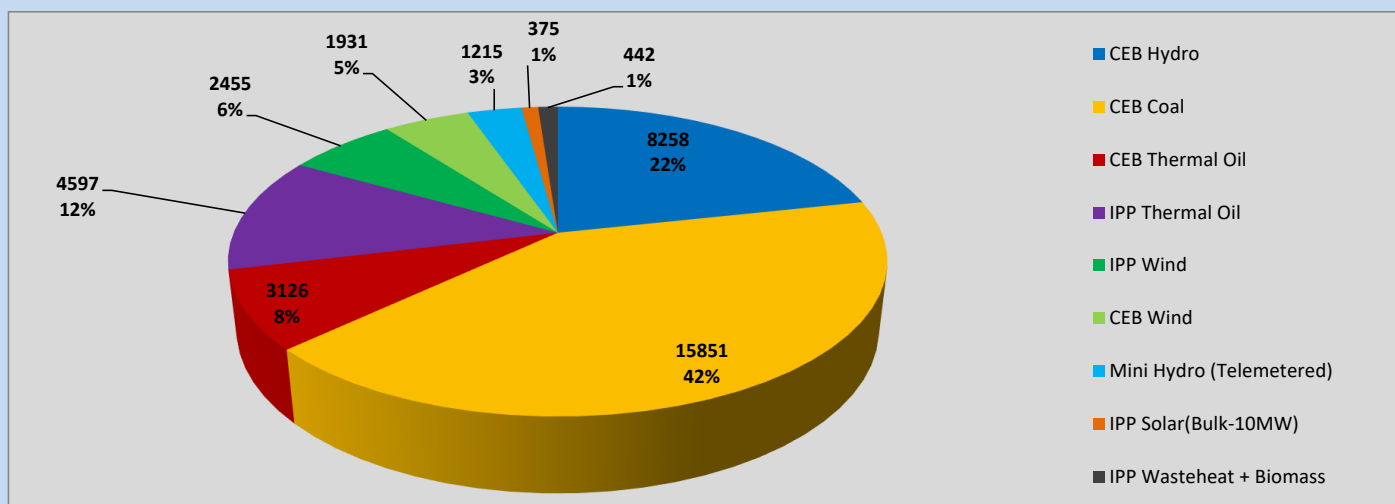
Generation and Reservoirs Statistics

June 10, 2023



PUBLIC UTILITIES COMMISSION OF SRI LANKA

Daily Generation Mix in MWh



Total Generation (Excluding estimated figures) =

38,250 MWh

Estimated figures of CEB generation report

Estimated unserved energy = 0.00 GWh

Estimated Mini Hydro (Non telemetered) = 2865 MWh

Estimated IPP Solar PV (Bulk 1-10MW) = 304 MWh

Estimated Solar Roof Top PV = 1890 MWh

Cumulative Dispatch

Following data excludes the contribution from roof top solar, non telemetered solar and mini hydro plants

For Current Month

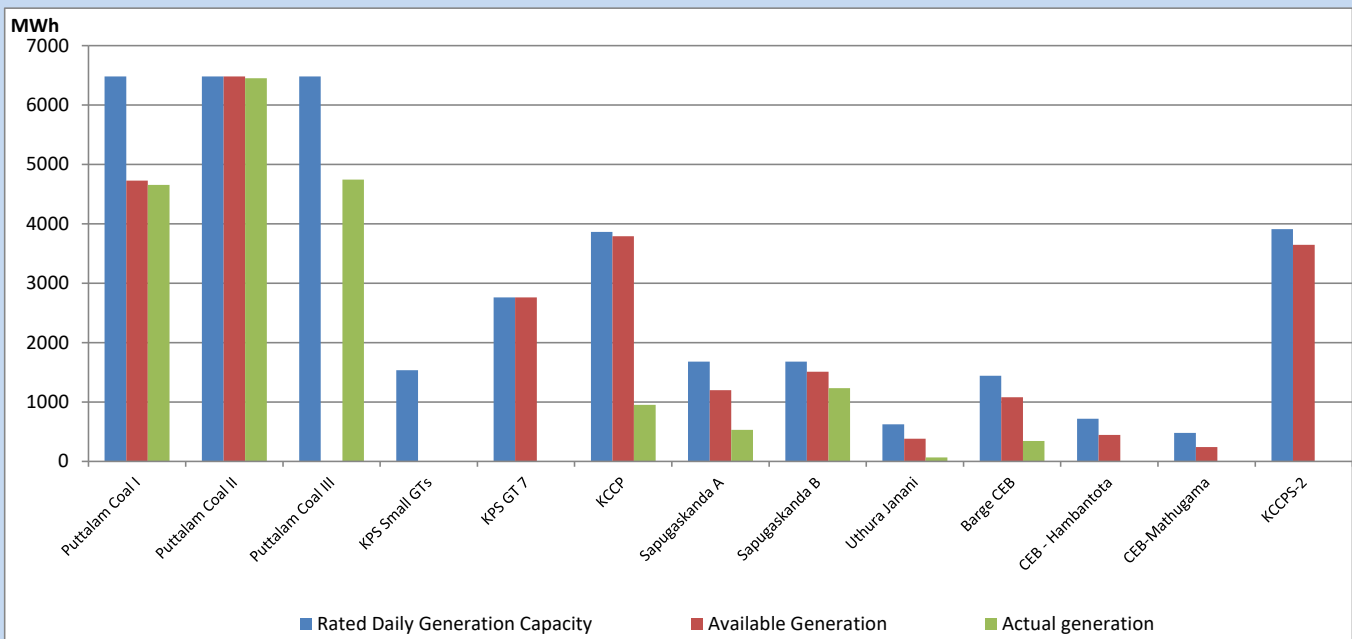
Category	Dispatch (GWh)	
CEB Hydro	88	22.02%
CEB Coal	164	40.91%
CEB Thermal Oil	58	14.49%
IPP Thermal	28	6.93%
SPP Wind	21	5.36%
CEB Wind	19	4.75%
Mini Hydro (Telemetered)	14	3.52%
IPP Solar(Bulk-10MW)	4	0.89%
IPP Wasteheat + BMP	5	1.14%
Total	400	

For Current Year

Category	Dispatch (GWh)	
CEB Hydro	1,569	25.47%
CEB Coal	2,658	43.17%
CEB Thermal Oil	905	14.70%
IPP Thermal	545	8.85%
SPP Wind	112	1.82%
CEB Wind	130	2.11%
Mini Hydro (Telemetered)	140	2.27%
IPP Solar(Bulk-10MW)	47	0.76%
IPP Wasteheat	52	0.84%
Total	6,158	

CEB owned Thermal Plant Dispatch

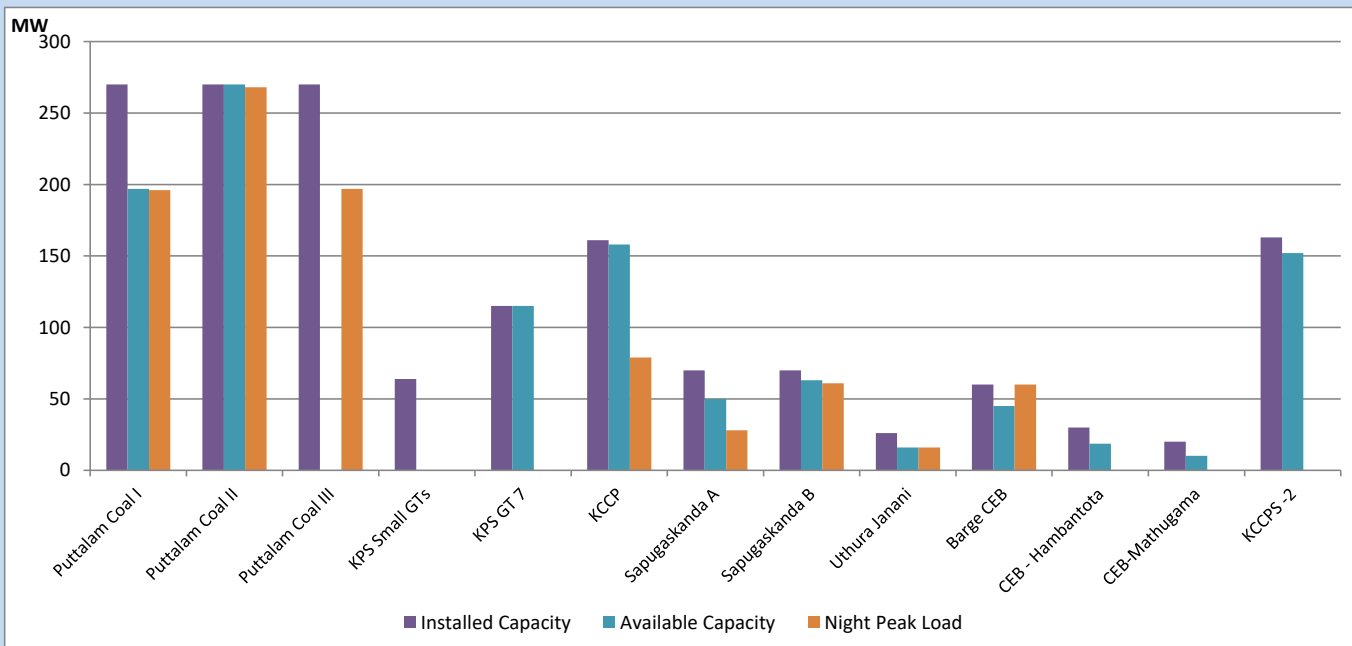
June 10, 2023



Available Generation is estimated based on plant availability at 6.00am on

June 11, 2023

CEB owned Thermal Plant Loading at the Night Peak



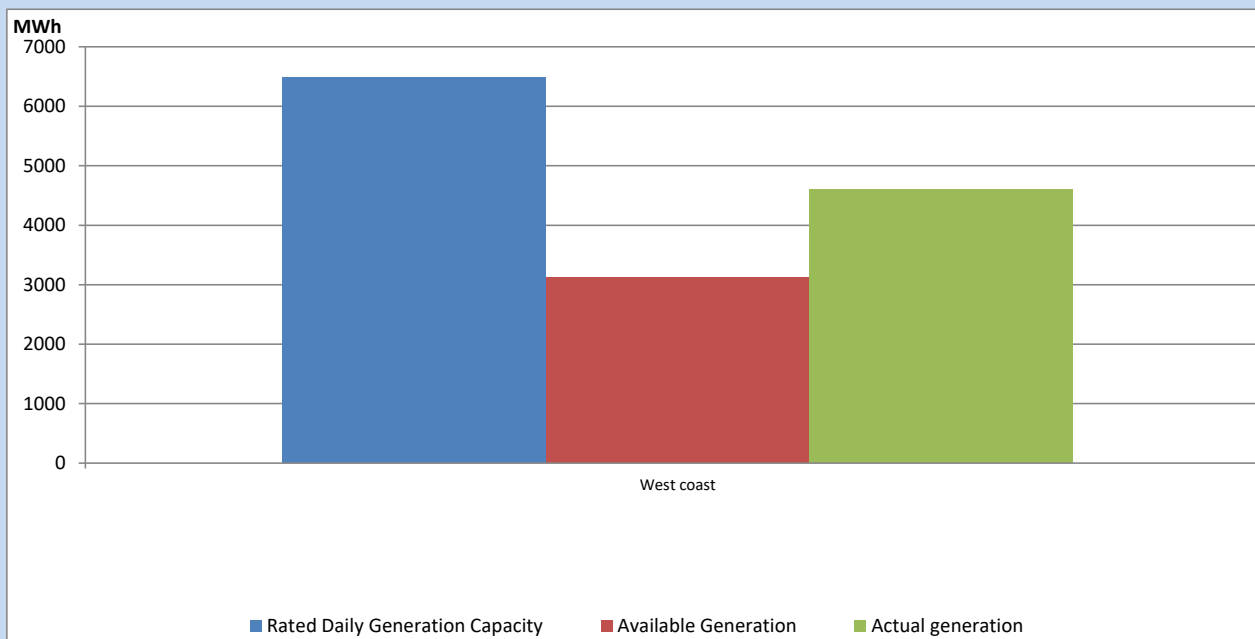
Note-

Plant availability is recorded at 6.00 am on

June 11, 2023

IPP owned Thermal Plant Dispatch

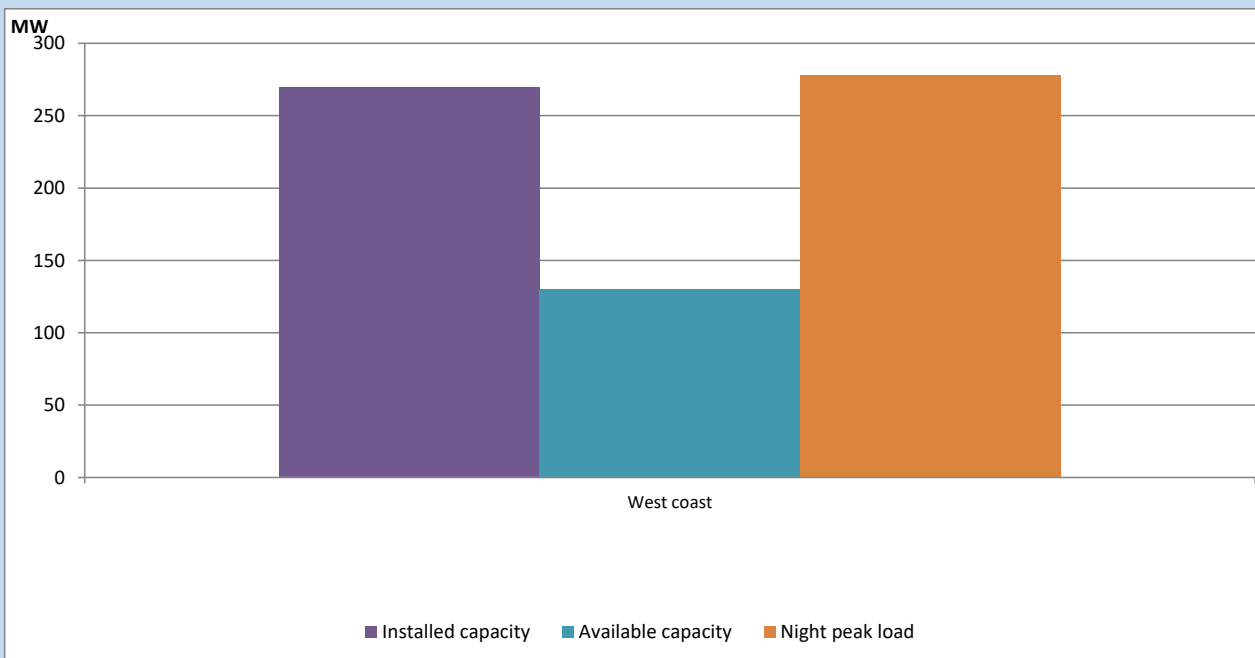
June 10, 2023



Available Generation is estimated based on plant availability at 6.00am on

June 11, 2023

IPP owned Thermal Plant Loading at the Night Peak

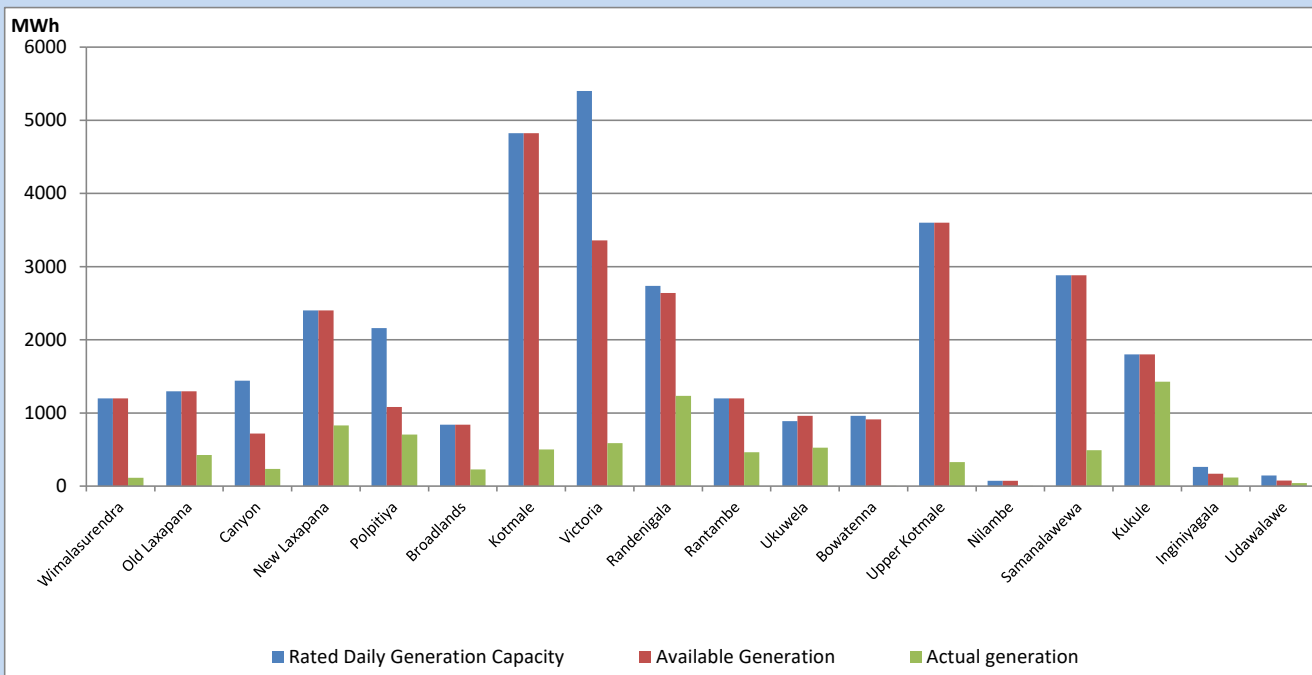


Note- Plant availability is recorded at 6.00 am on

June 11, 2023

Major Hydro Plant Dispatch

June 10, 2023

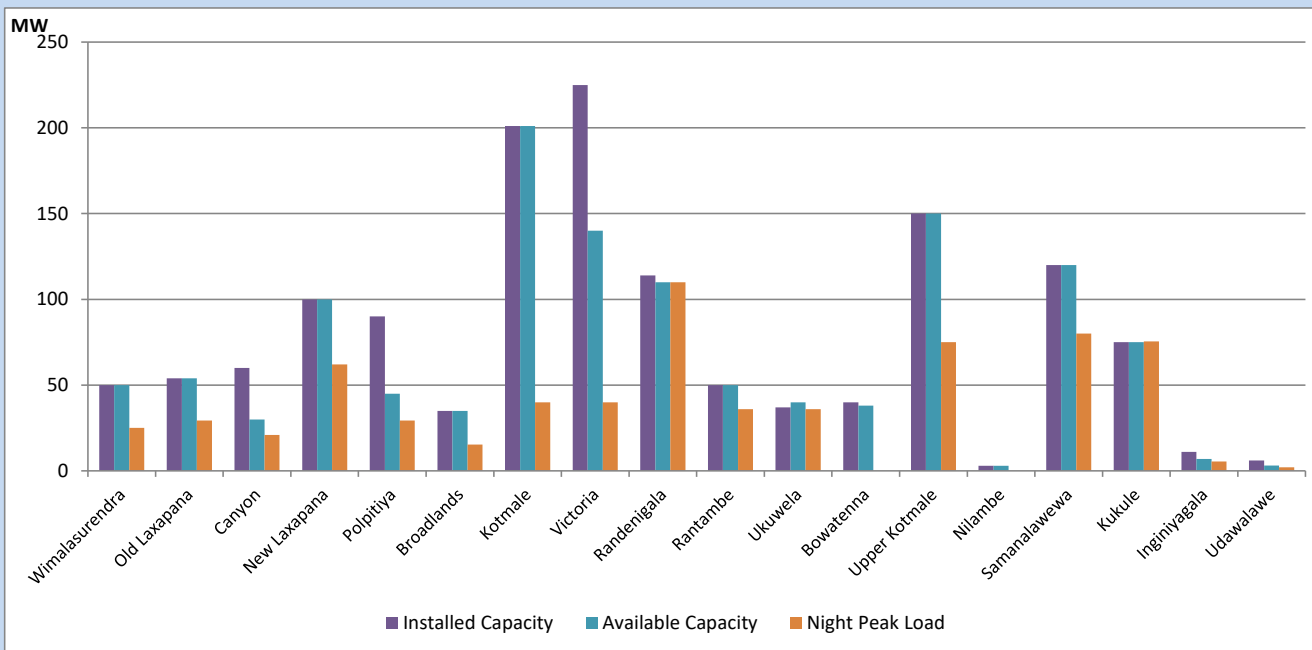


Available Generation is estimated based on plant availability at 6.00am on
Broadlands power plant is operating in the Commissioning Stage

June 11, 2023

Major Hydro Plant Loading at Night Peak

June 10, 2023



Note- Plant availability is recorded at 6.00 am on
Broadlands power plant is operating in the Commissioning Stage

June 11, 2023

Summary of Major Plant performance

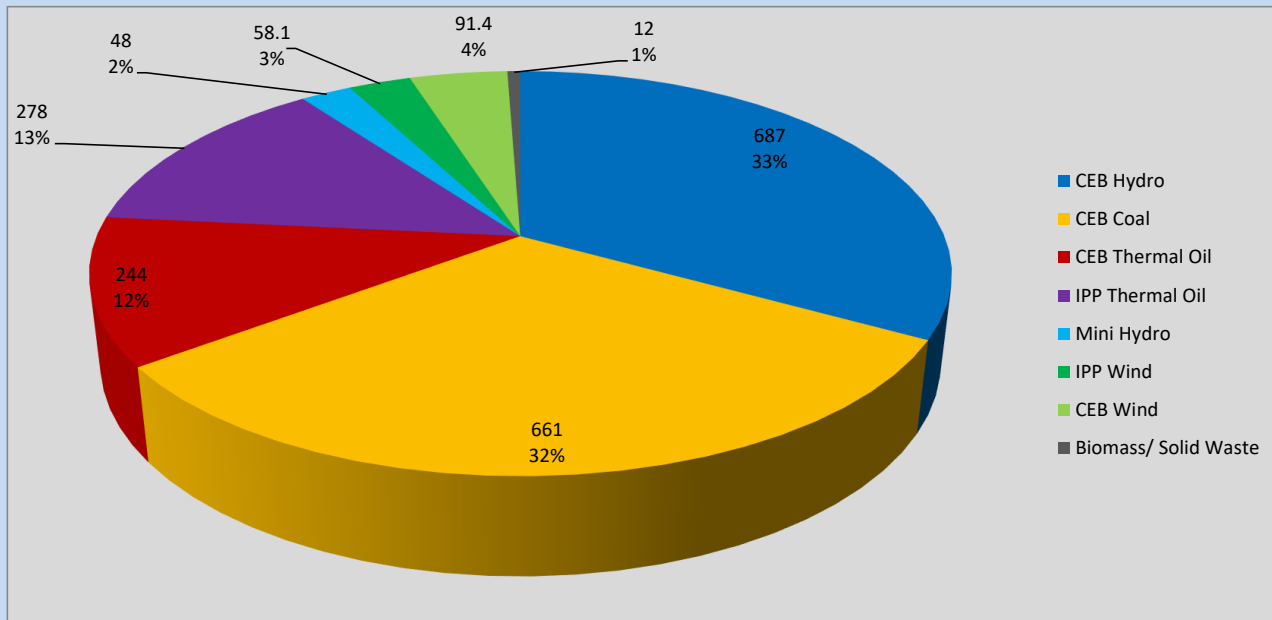
Plant	Installed Capacity	Plant Availability	Night peak Load	Plant Dispatch
	(MW)	(MW)	(MW)	(MWh)
Wimalasurendra	50	50	25	115
Old Laxapana	54	54	29	426
Canyon	60	30	21	234
New Laxapana	100	100	62	830
Polpitiya	90	45	29	706
Broadlands	35	35	15	228
Kotmale	201	201	40	500
Victoria	225	140	40	588
Randenigala	114	110	110	1,234
Rantambe	50	50	36	463
Ukuwela	37	40	36	524
Bowatenna	40	38	0	2
Upper Kotmale	150	150	75	327
Nilambe	3	3	0	5
Samanalawewa	120	120	80	490
Kukule	75	75	76	1,426
Inginiyagala	11	7	5	119
Udawalawe	6	3	2	41
Puttalam Coal I	270	197	196	4,654
Puttalam Coal II	270	270	268	6,451
Puttalam Coal III	270	0	197	4,746
KPS Small GTs	64	0	0	0
KPS GT 7	115	115	0	0
KCCP	161	158	79	954
Sapugaskanda A	70	50	28	529
Sapugaskanda B	70	63	61	1,232
Uthura Janani	26	16	16	67
Barge CEB	60	45	60	344
CEB-Hambantota	30	19	0	0
CEB-Mathugama	20	10	0	0
ACE Matara	24	0	0	0
Asia Power	50	0	0	0
KCCPS -2	163	152	0	0
West Coast	270	130	278	4,597
Nothern Power	36	0	0	0
ACE Embilipitiya	93	0	0	0
Total	3,483	2,476	2,074	38,250

Plant availability is the availability recorded at 6 am on

June 11, 2023

Contribution to the Night Peak in MW

June 10, 2023

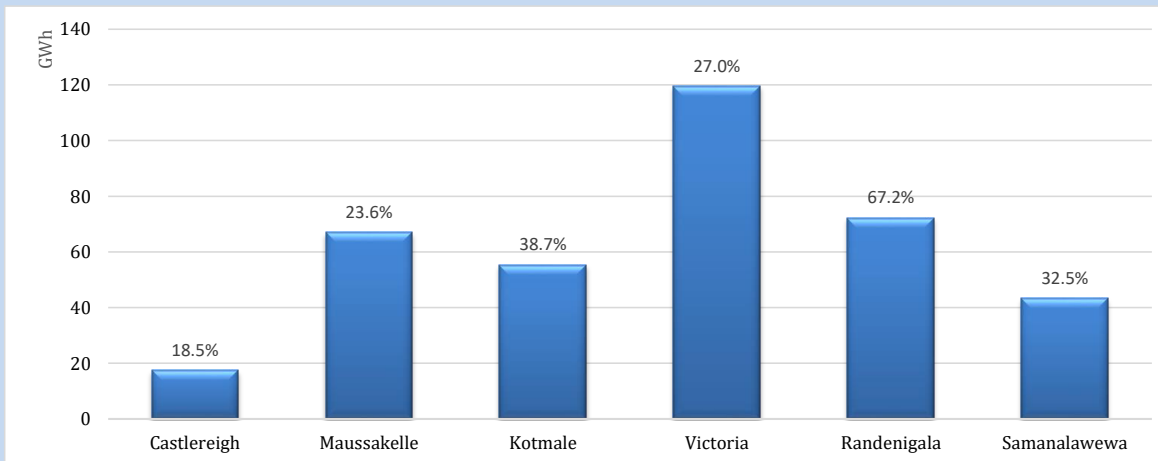


Night Peak*	2,079 MW
Day Peak Maximum Demand	1,575 MW
Day Peak Minimum Demand	1,417 MW
Off Peak Minimum Demand	1,294 MW

Above figures are excluding contribution from roof top solar, non telemetered solar and mini hydro plants

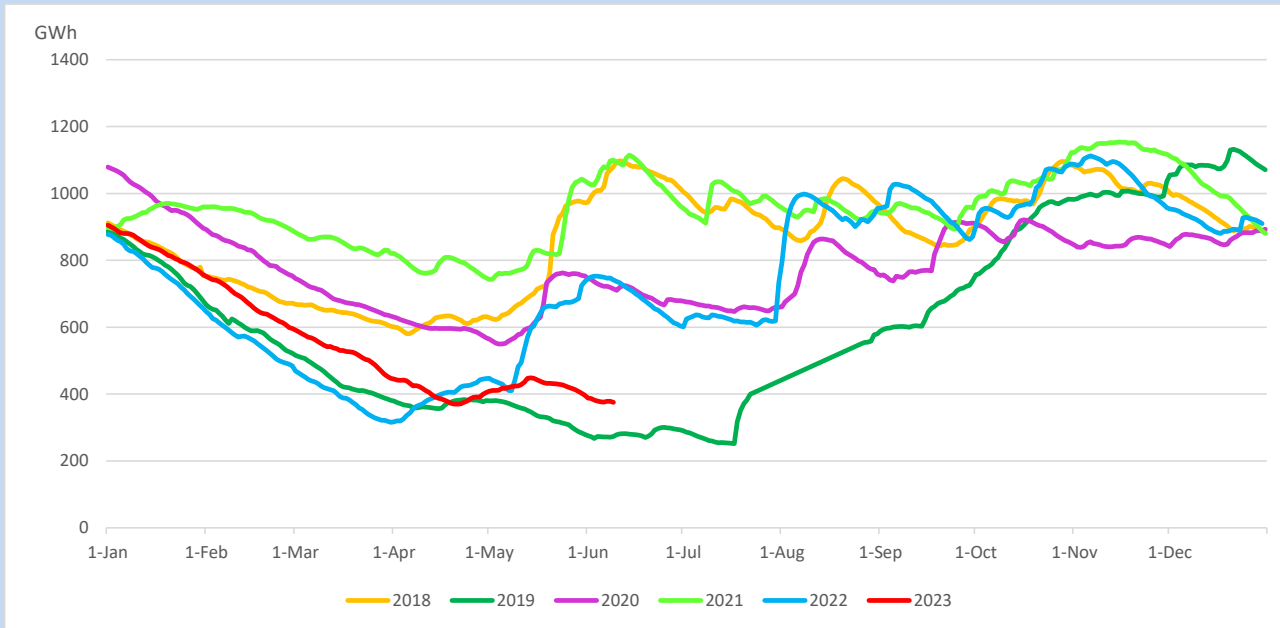
Reservoir Levels -

as at 06.00 Hr on June 11, 2023

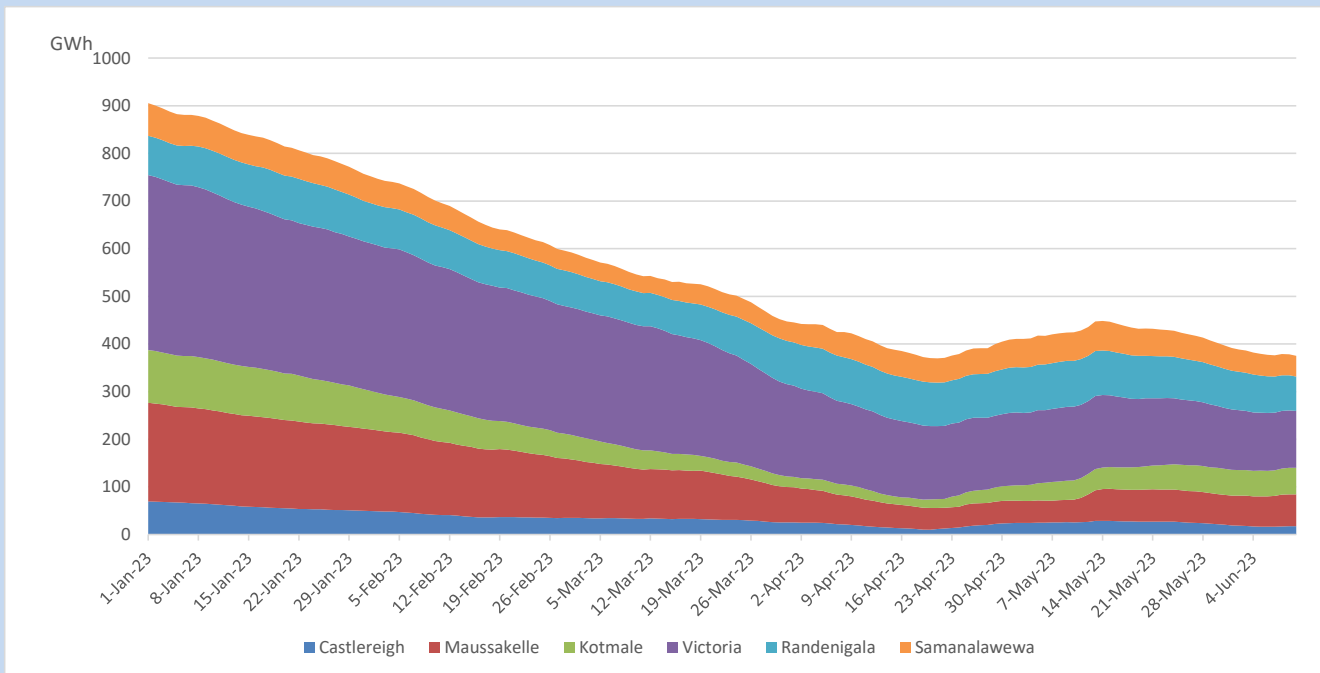


Total Reservoir Level	375.2 GWh
% of Total capacity	31.1%

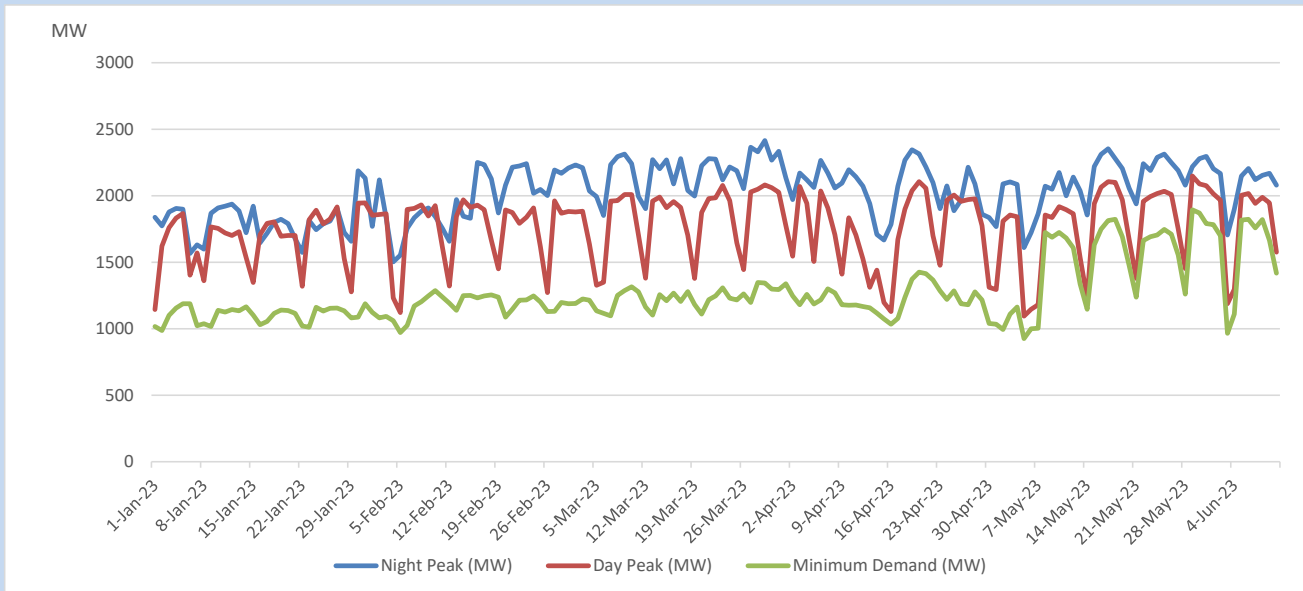
Comparison of Total Reservoir Storage Levels with Past Years



Variation of Major Hydro Reservoir Levels in the current year (GWh)



Variation of Demand during the current year

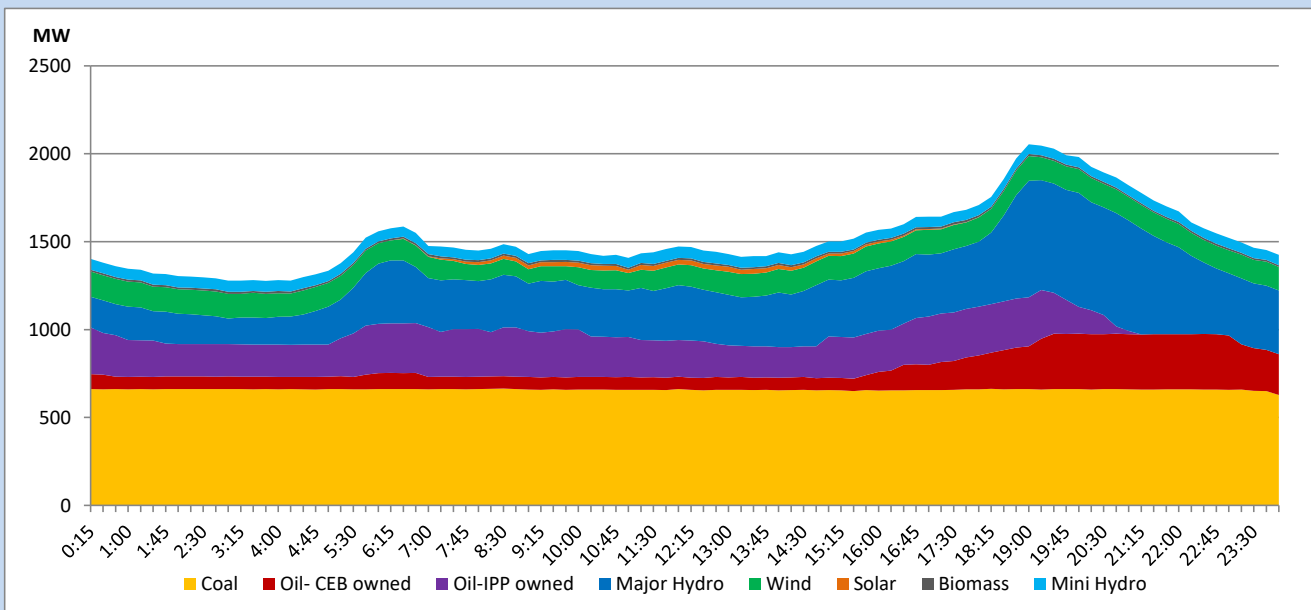


The above figures are excluding contribution from roof top solar, non telemetered solar and mini hydro plants

Daily Load Curve

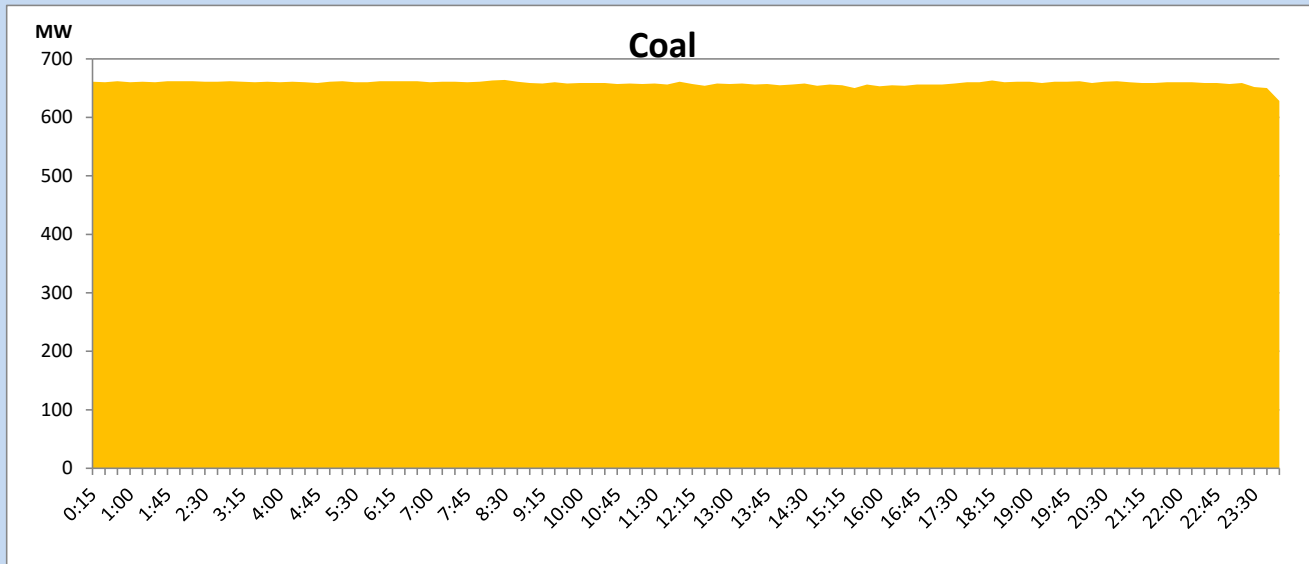
June 10, 2023

Solar and wind data is based on Telemetered Power Stations only



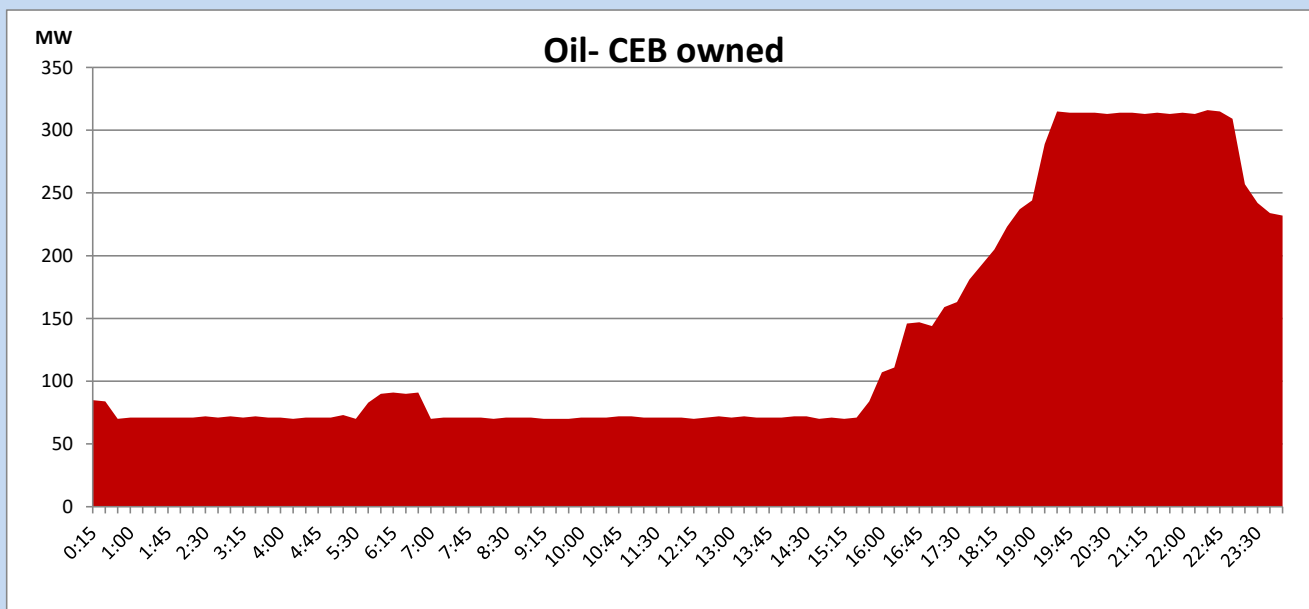
Coal Generation during

June 10, 2023



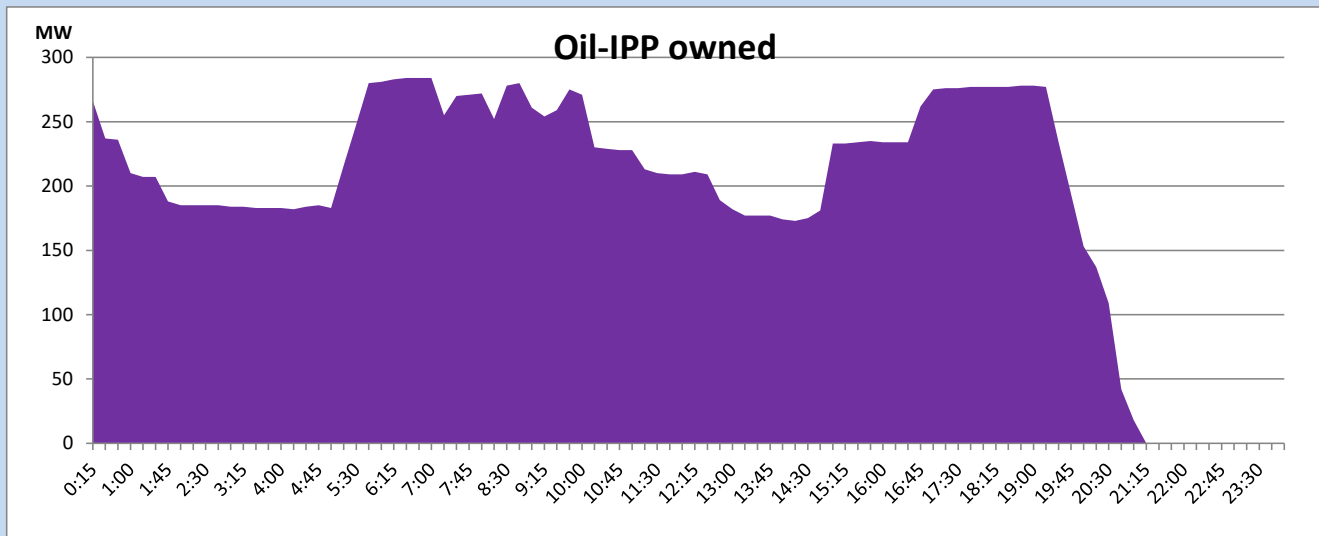
CEB Oil Plant Generation during

June 10, 2023



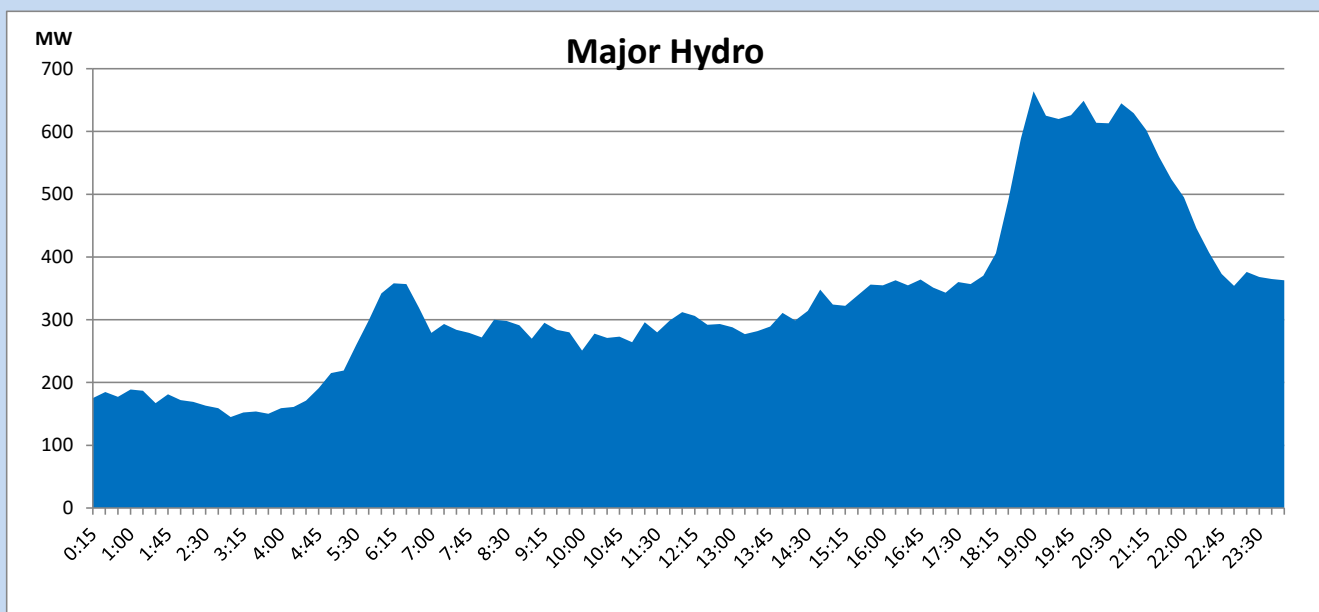
IPP Oil Plant Generation during

June 10, 2023



Major Hydro Generation during

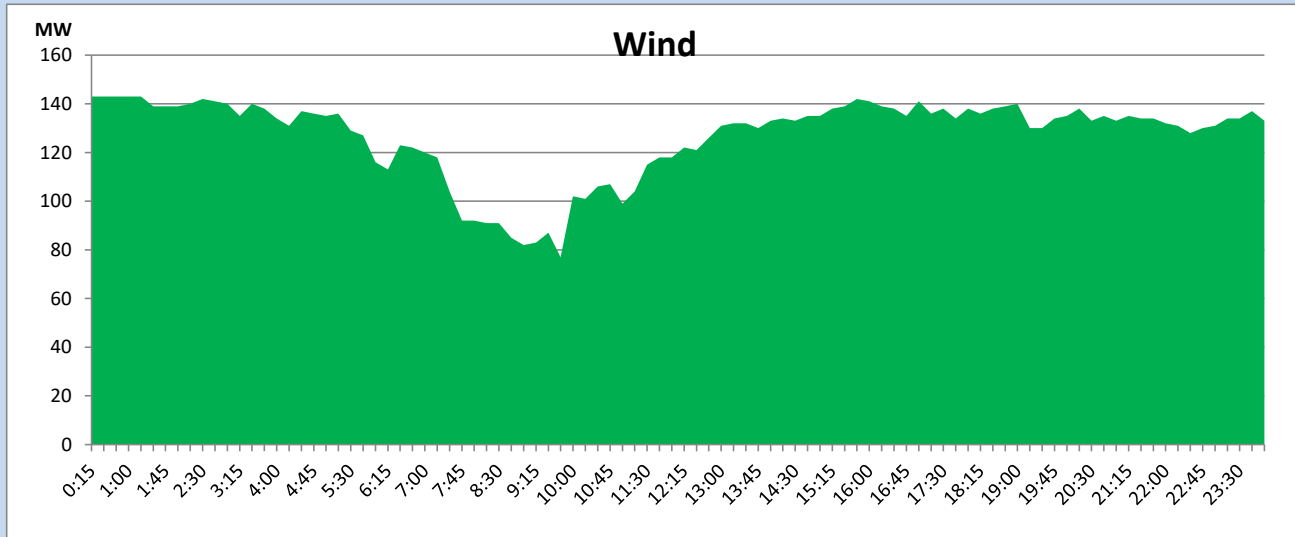
June 10, 2023



Wind Generation during

June 10, 2023

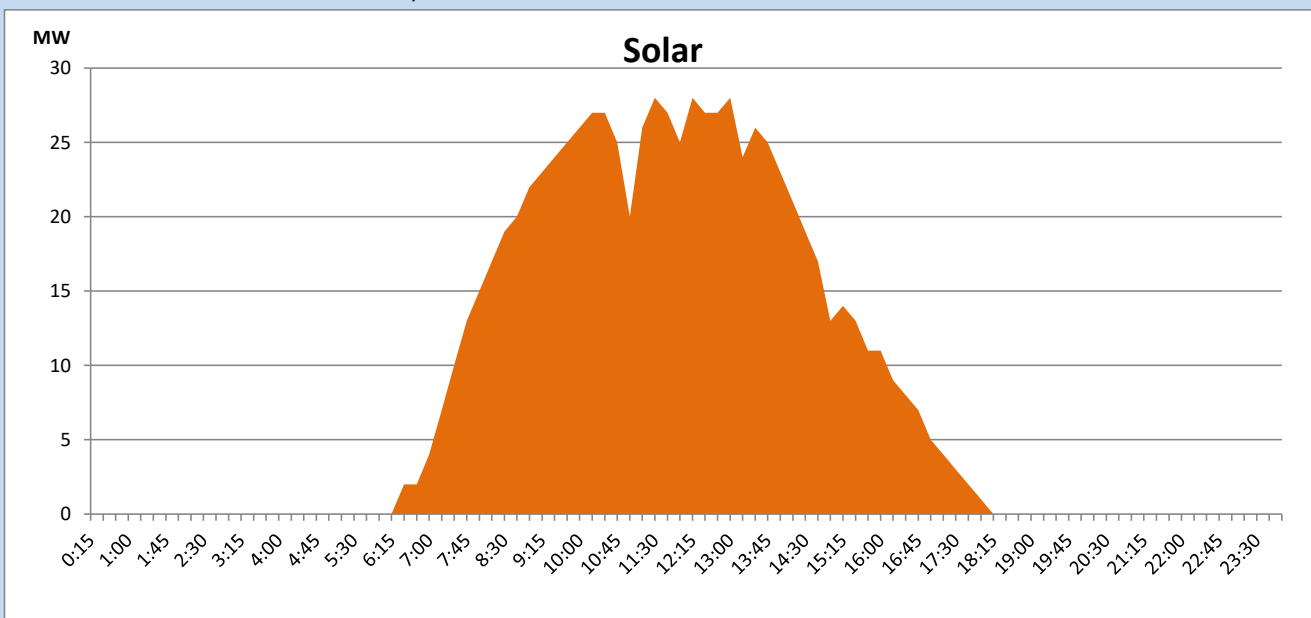
Based on Telemetered Power Stations only



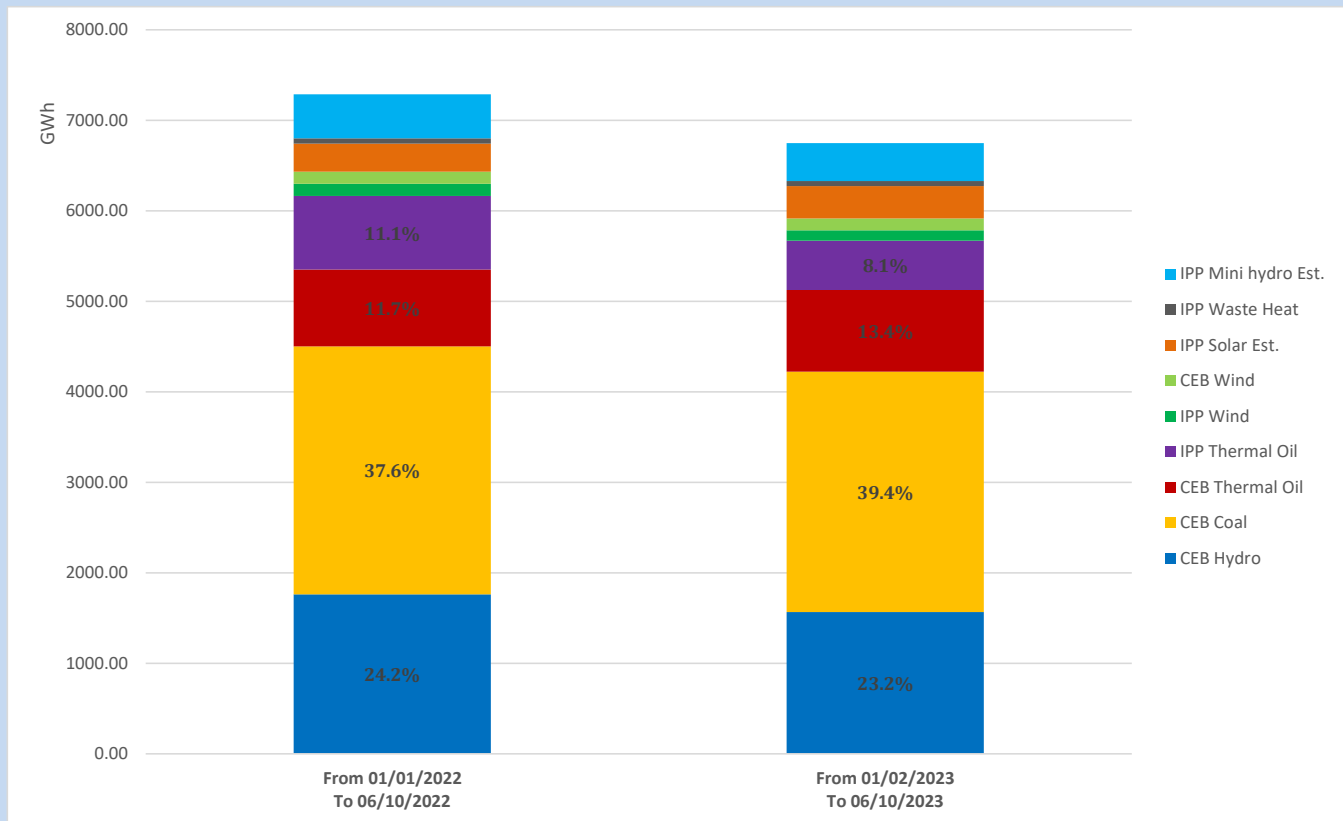
Solar Generation during

June 10, 2023

Based on Telemetered Power Stations only



Cumulative Dispatch Comparison with Last Year



The above figures are including contribution from roof top solar, non telemetered solar and mini hydro plants

Thermal Plant Fuel types

Power Station	Primary Fuel
CEB Thermal	
Sapugaskanda 1	Heavy Fuel
Sapugaskanda 2	Heavy Fuel
Kelanitissa Small Gas Turbines	Auto Diesel
GT 7 - Kelanitissa	Auto Diesel
Kelanitissa CCY	Naphtha or Diesel
Lakvijaya 1	Coal
Lakvijaya 2	Coal
Lakvijaya 3	Coal
Uthuru Janani	Heavy Fuel
Barge CEB	Heavy Fuel
KCCPS -2	Auto Diesel

Power Station	Primary Fuel
Private Thermal	
West Coast	Auto Diesel / Heavy Fuel

Major Incidents reported during the day

June 10, 2023

- 01) UFLS stage 1 operated at 10:53hrs due to the rejection of solar & mini hydro generation from the southern system. All affected feeders were normalized by 11:04hrs.
- 02) Aniyakanda - Kelaniya 132kV cct tripped & AR from both ends at 05:39hrs(11.06.23) due to the operation of distance protection.
- 03) LVPS unit 03 made a forced shutdown and desynchronized from the system at 05:45hrs(11.06.23) due to the boiler drum steam leakage. The unit is yet to resume generation.