

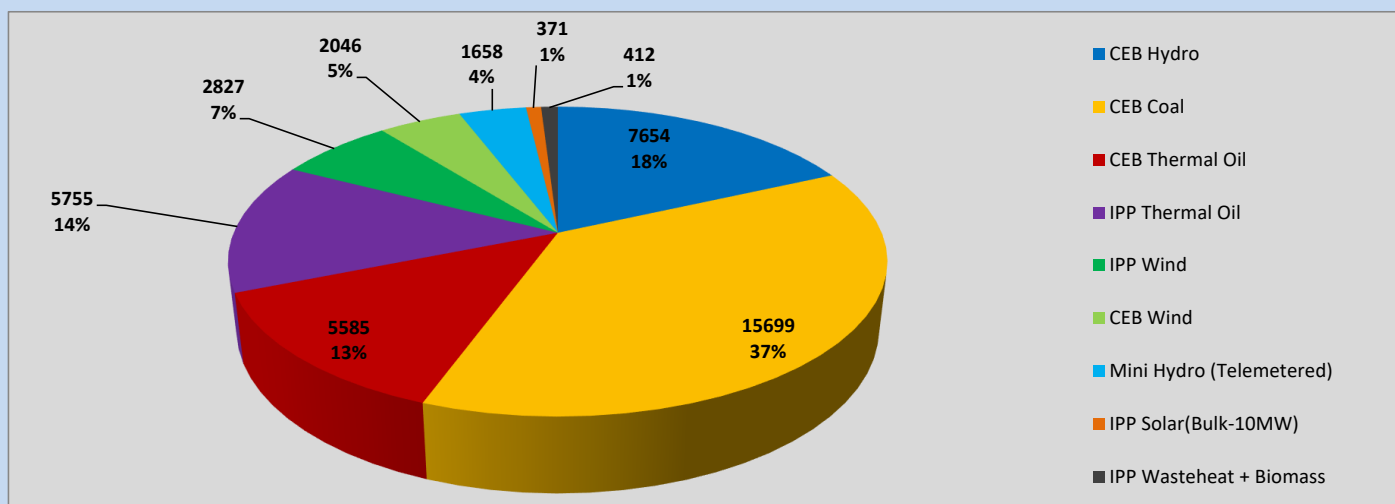
Generation and Reservoirs Statistics

June 9, 2023



PUBLIC UTILITIES COMMISSION OF SRI LANKA

Daily Generation Mix in MWh



Total Generation (Excluding estimated figures) =

42,007 MWh

Estimated figures of CEB generation report

Estimated unserved energy = 0.00 GWh

Estimated Mini Hydro (Non telemetered) = 2422 MWh

Estimated IPP Solar PV (Bulk 1-10MW) = 304 MWh

Estimated Solar Roof Top PV = 1890 MWh

Cumulative Dispatch

Following data excludes the contribution from roof top solar, non telemetered solar and mini hydro plants

For Current Month

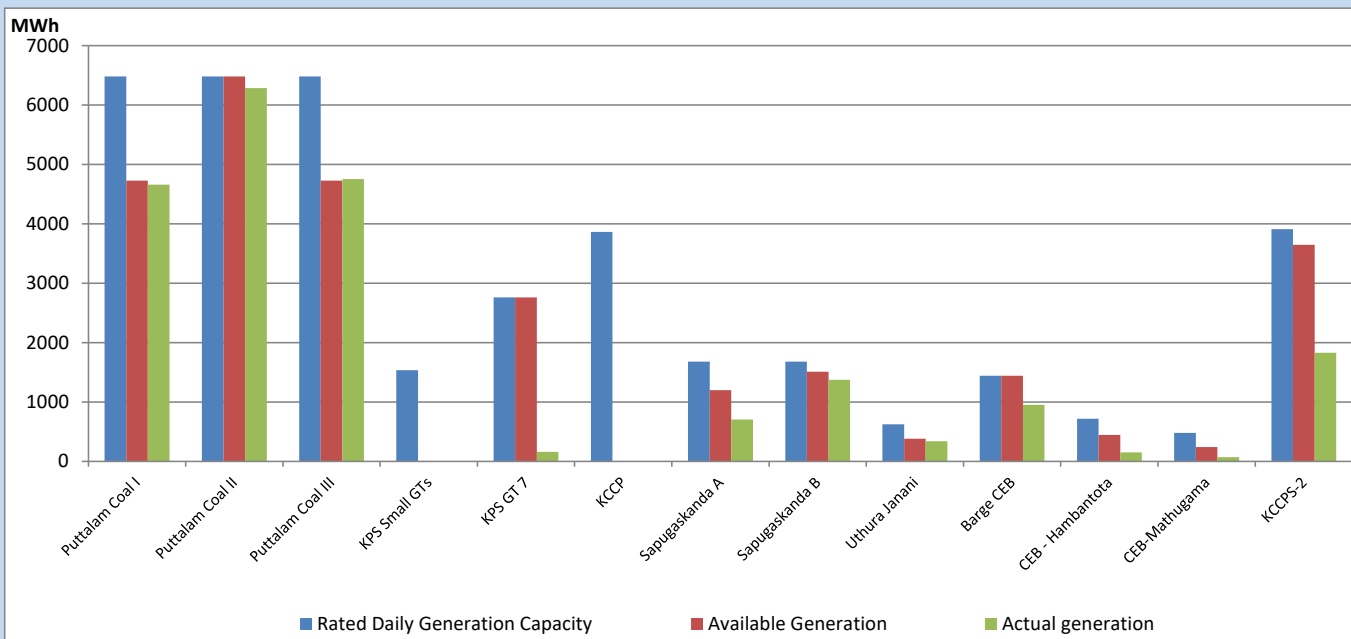
Category	Dispatch (GWh)	
CEB Hydro	80	22.06%
CEB Coal	148	40.86%
CEB Thermal Oil	55	15.16%
IPP Thermal	23	6.39%
SPP Wind	19	5.25%
CEB Wind	17	4.72%
Mini Hydro (Telemetered)	13	3.55%
IPP Solar(Bulk-10MW)	3	0.88%
IPP Wasteheat + BMP	4	1.13%
Total	362	

For Current Year

Category	Dispatch (GWh)	
CEB Hydro	1,560	25.50%
CEB Coal	2,643	43.18%
CEB Thermal Oil	902	14.74%
IPP Thermal	540	8.83%
SPP Wind	110	1.79%
CEB Wind	128	2.10%
Mini Hydro (Telemetered)	139	2.27%
IPP Solar(Bulk-10MW)	46	0.76%
IPP Wasteheat	51	0.84%
Total	6,119	

CEB owned Thermal Plant Dispatch

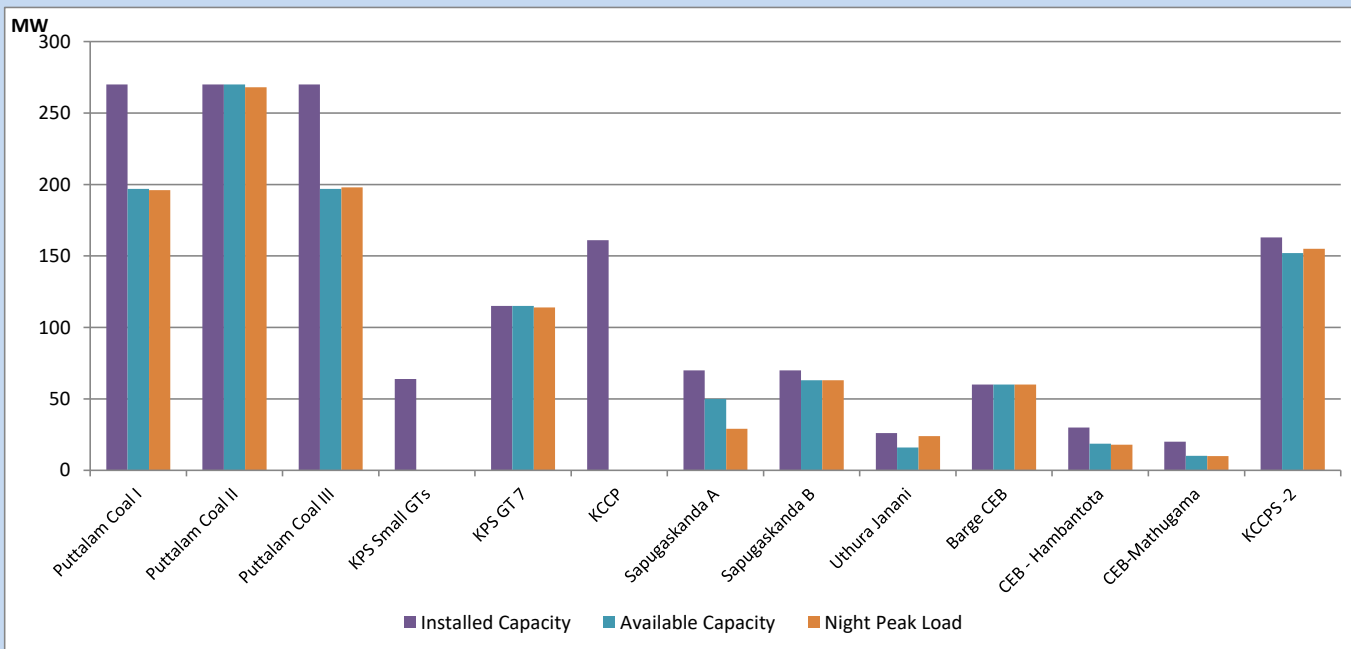
June 9, 2023



Available Generation is estimated based on plant availability at 6.00am on

June 10, 2023

CEB owned Thermal Plant Loading at the Night Peak



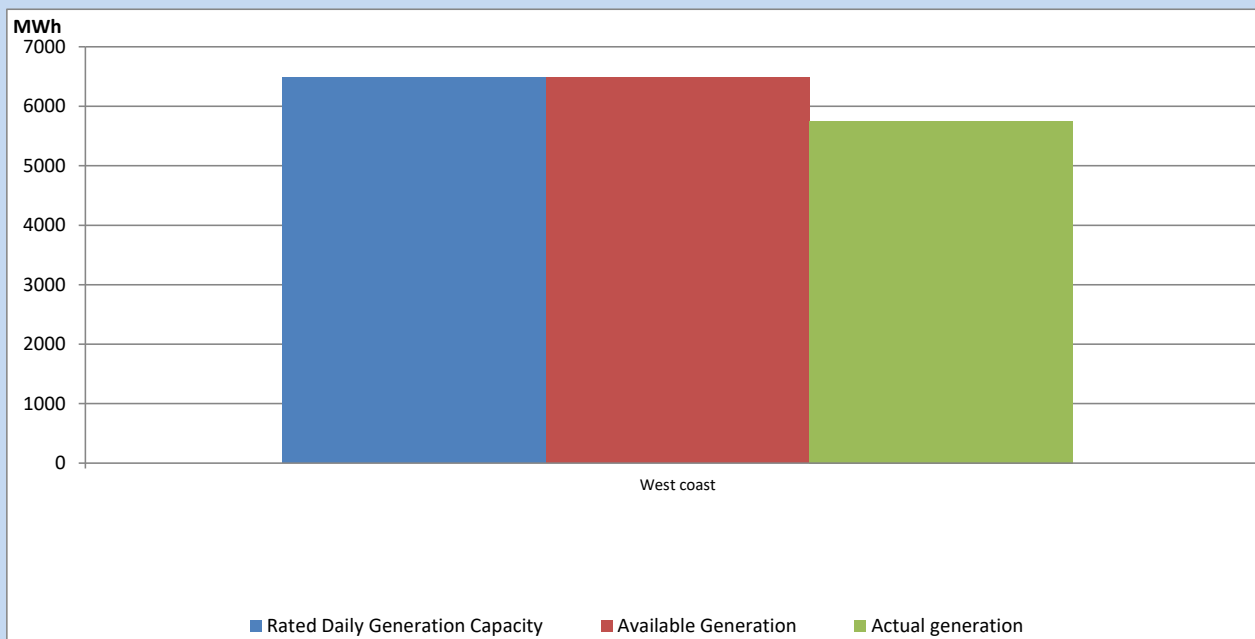
Note-

Plant availability is recorded at 6.00 am on

June 10, 2023

IPP owned Thermal Plant Dispatch

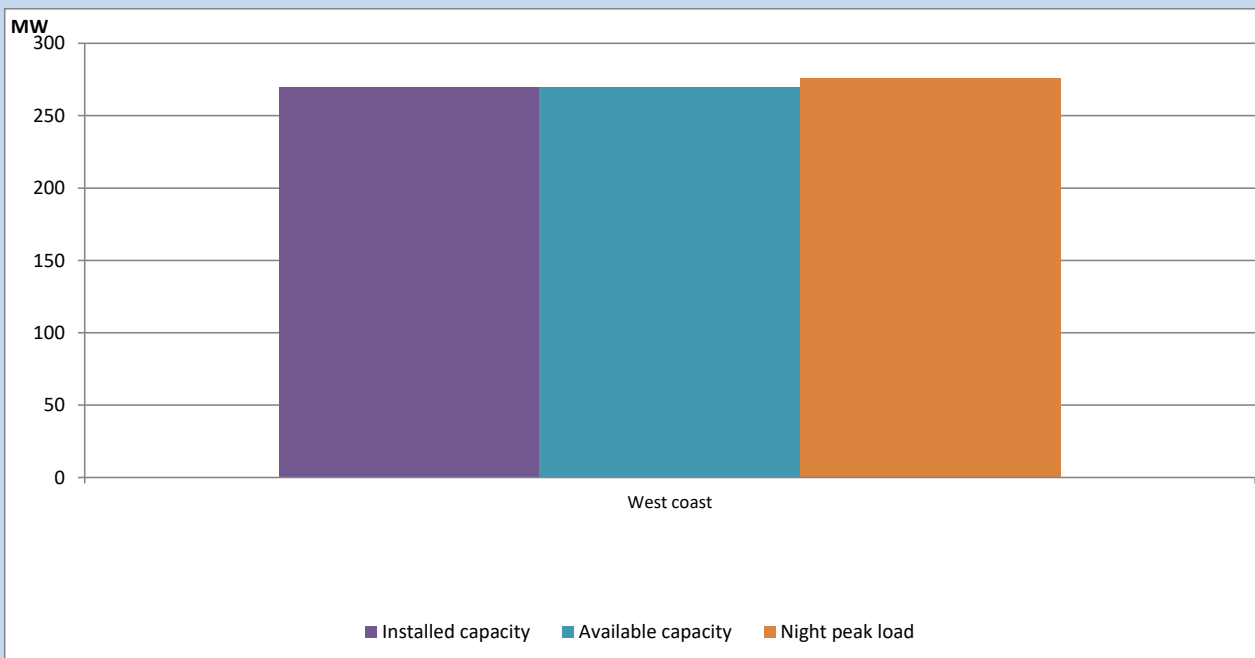
June 9, 2023



Available Generation is estimated based on plant availability at 6.00am on

June 10, 2023

IPP owned Thermal Plant Loading at the Night Peak

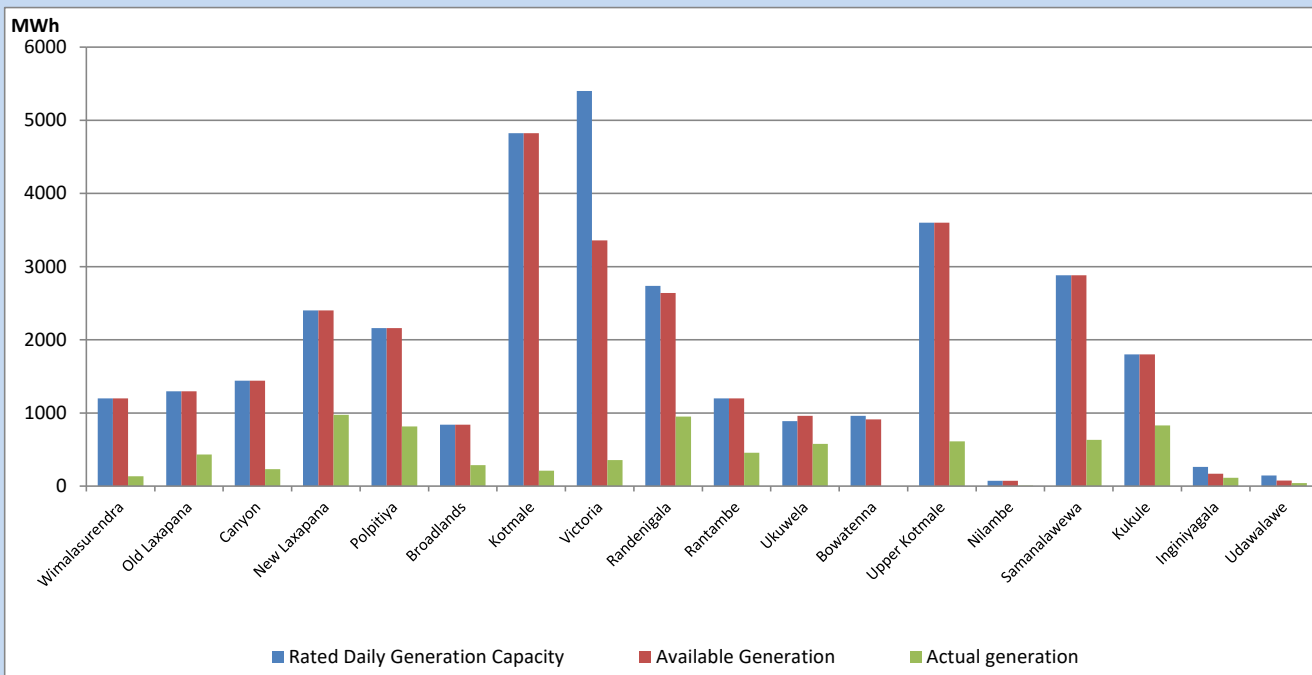


Note- Plant availability is recorded at 6.00 am on

June 10, 2023

Major Hydro Plant Dispatch

June 9, 2023

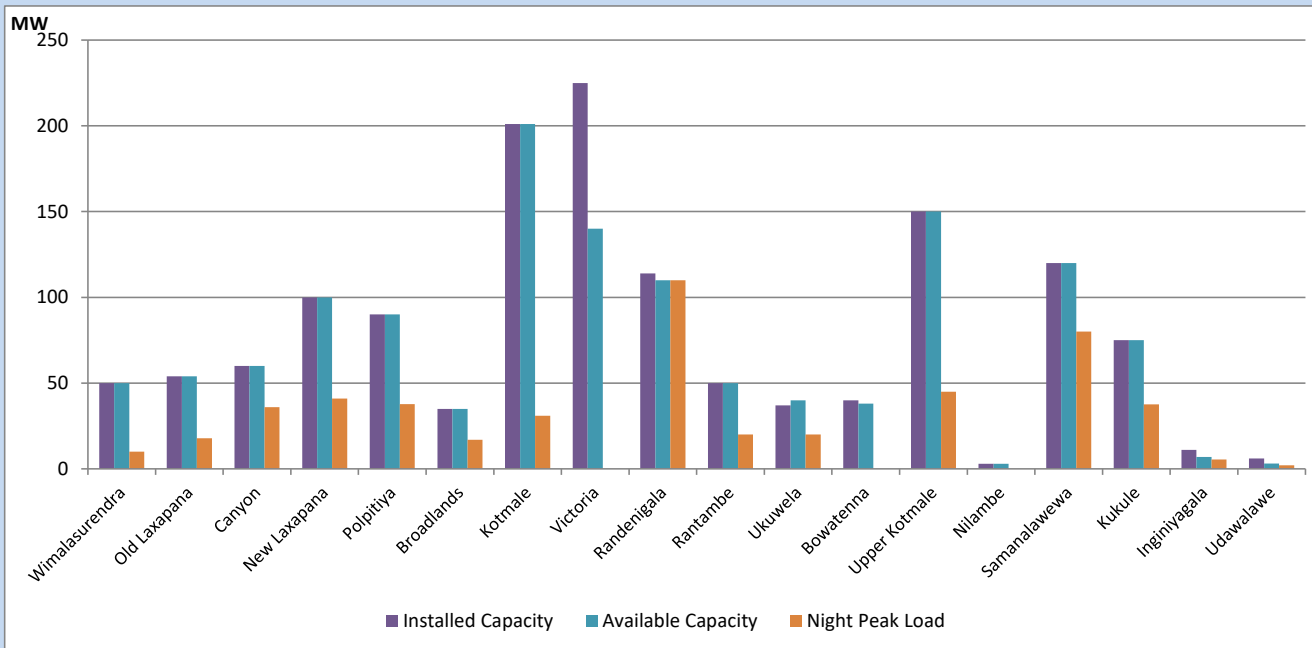


Available Generation is estimated based on plant availability at 6.00am on
Broadlands power plant is operating in the Commissioning Stage

June 10, 2023

Major Hydro Plant Loading at Night Peak

June 9, 2023



Note- Plant availability is recorded at 6.00 am on
Broadlands power plant is operating in the Commissioning Stage

June 10, 2023

Summary of Major Plant performance

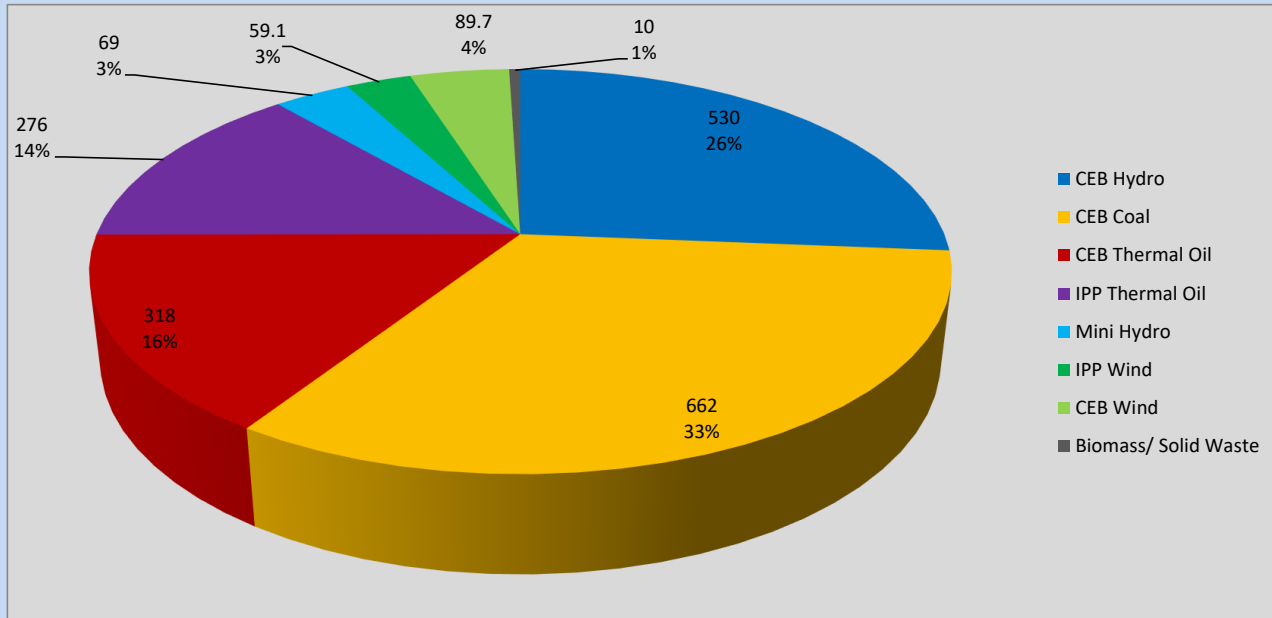
Plant	Installed Capacity	Plant Availability	Night peak Load	Plant Dispatch
	(MW)	(MW)	(MW)	(MWh)
Wimalasurendra	50	50	10	134
Old Laxapana	54	54	18	431
Canyon	60	60	36	232
New Laxapana	100	100	41	974
Polpitiya	90	90	38	814
Broadlands	35	35	17	287
Kotmale	201	201	31	210
Victoria	225	140	0	357
Randenigala	114	110	110	951
Rantambe	50	50	20	455
Ukuwela	37	40	20	576
Bowatenna	40	38	0	0
Upper Kotmale	150	150	45	612
Nilambe	3	3	0	6
Samanalawewa	120	120	80	631
Kukule	75	75	38	829
Inginiyagala	11	7	5	113
Udawalawe	6	3	2	42
Puttalam Coal I	270	197	196	4,659
Puttalam Coal II	270	270	268	6,286
Puttalam Coal III	270	197	198	4,754
KPS Small GTs	64	0	0	0
KPS GT 7	115	115	114	160
KCCP	161	0	0	0
Sapugaskanda A	70	50	29	705
Sapugaskanda B	70	63	63	1,372
Uthura Janani	26	16	24	341
Barge CEB	60	60	60	953
CEB-Hambantota	30	19	18	154
CEB-Mathugama	20	10	10	71
ACE Matara	24	0	0	0
Asia Power	50	0	0	0
KCCPS -2	163	152	155	1,829
West Coast	270	270	276	5,755
Nothern Power	36	0	0	0
ACE Embilipitiya	93	0	0	0
Total	3,483	2,745	2,150	42,007

Plant availability is the availability recorded at 6 am on

June 10, 2023

Contribution to the Night Peak in MW

June 9, 2023

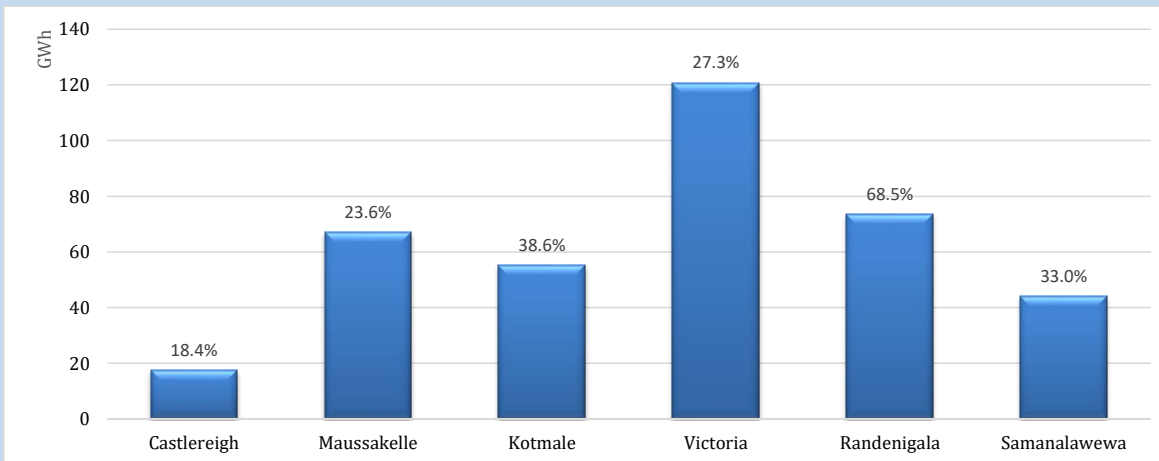


Night Peak*	2,169 MW
Day Peak Maximum Demand	1,946 MW
Day Peak Minimum Demand	1,665 MW
Off Peak Minimum Demand	1,244 MW

Above figures are excluding contribution from roof top solar, non telemetered solar and mini hydro plants

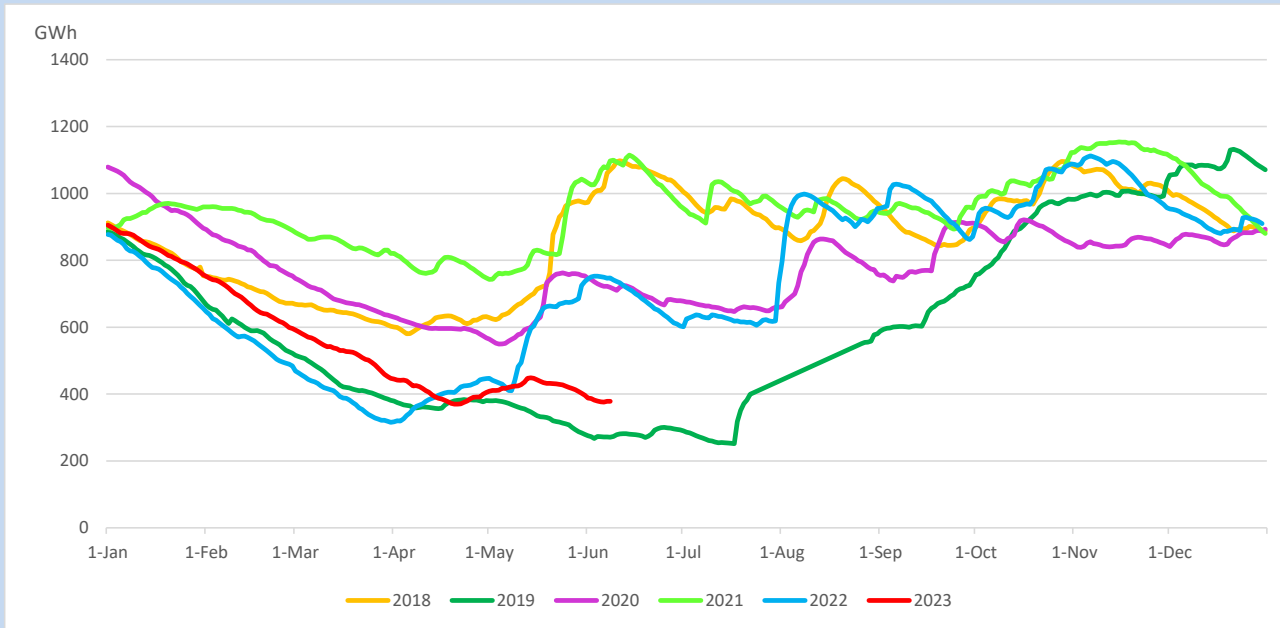
Reservoir Levels -

as at 06.00 Hr on June 10, 2023

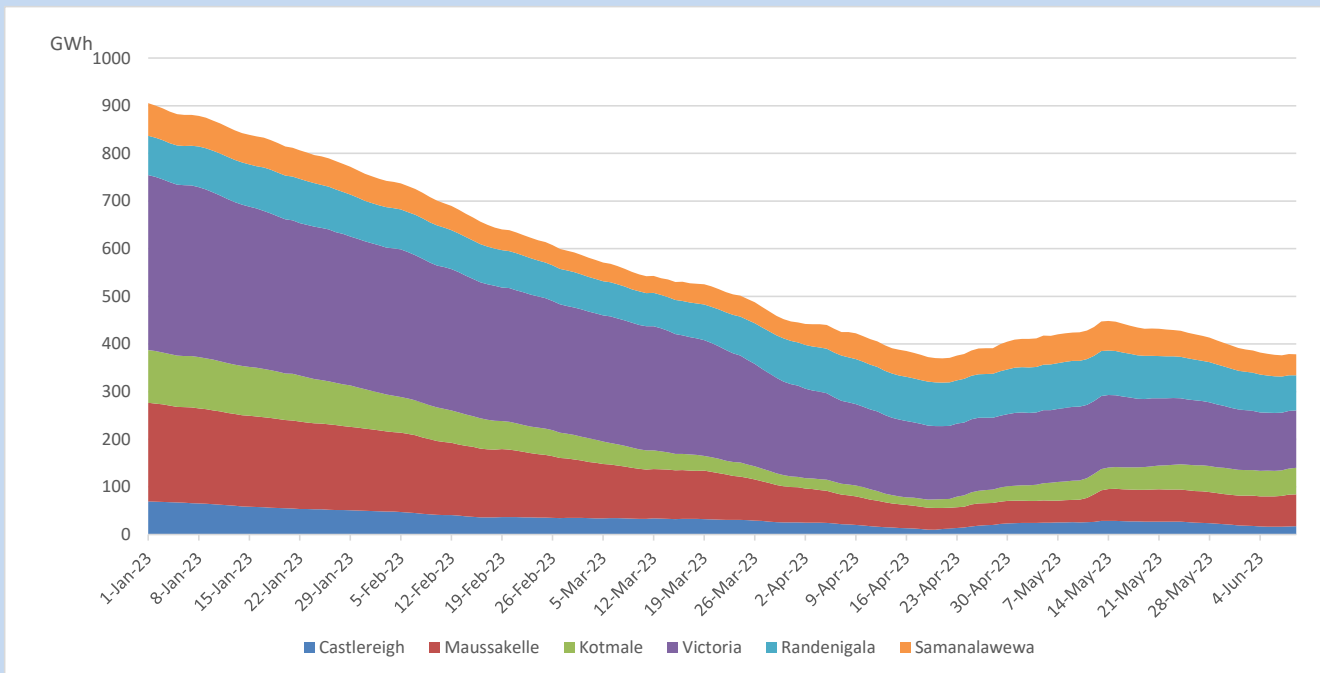


Total Reservoir Level	378.3 GWh
% of Total capacity	31.4%

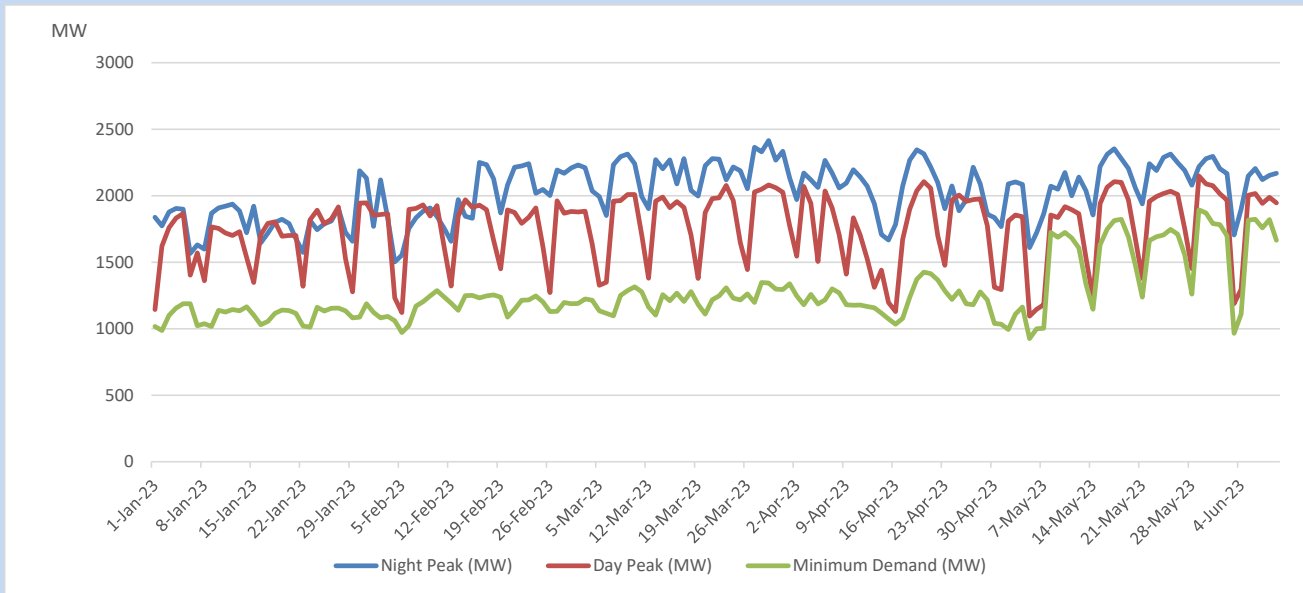
Comparison of Total Reservoir Storage Levels with Past Years



Variation of Major Hydro Reservoir Levels in the current year (GWh)



Variation of Demand during the current year

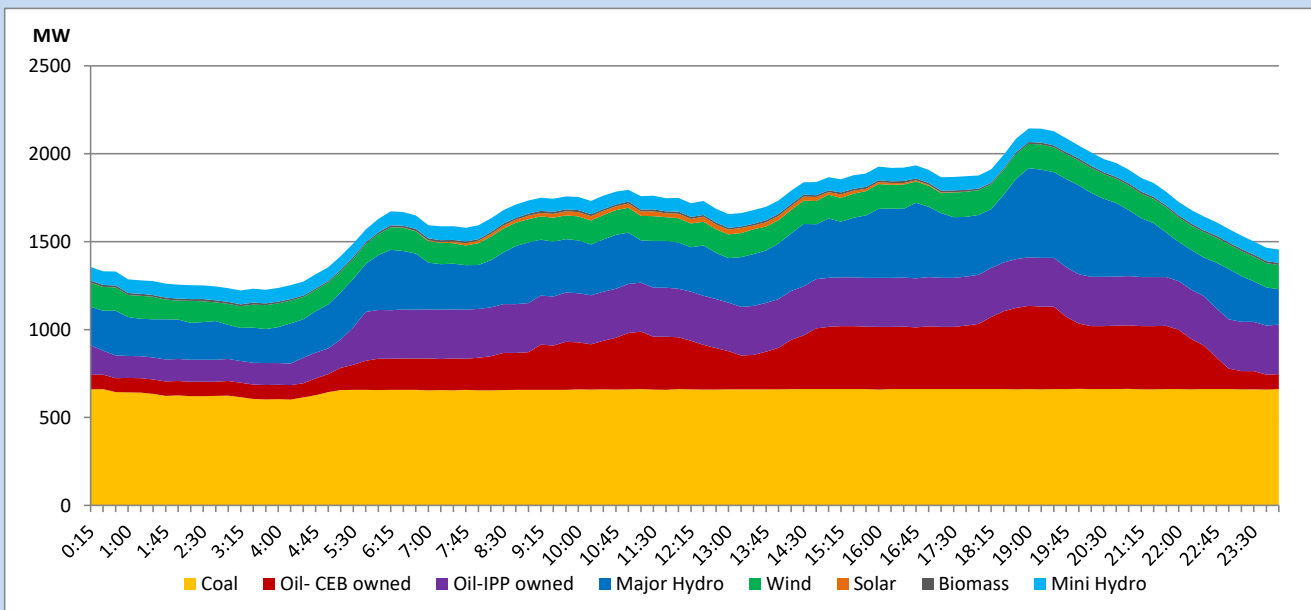


The above figures are excluding contribution from roof top solar, non telemetered solar and mini hydro plants

Daily Load Curve

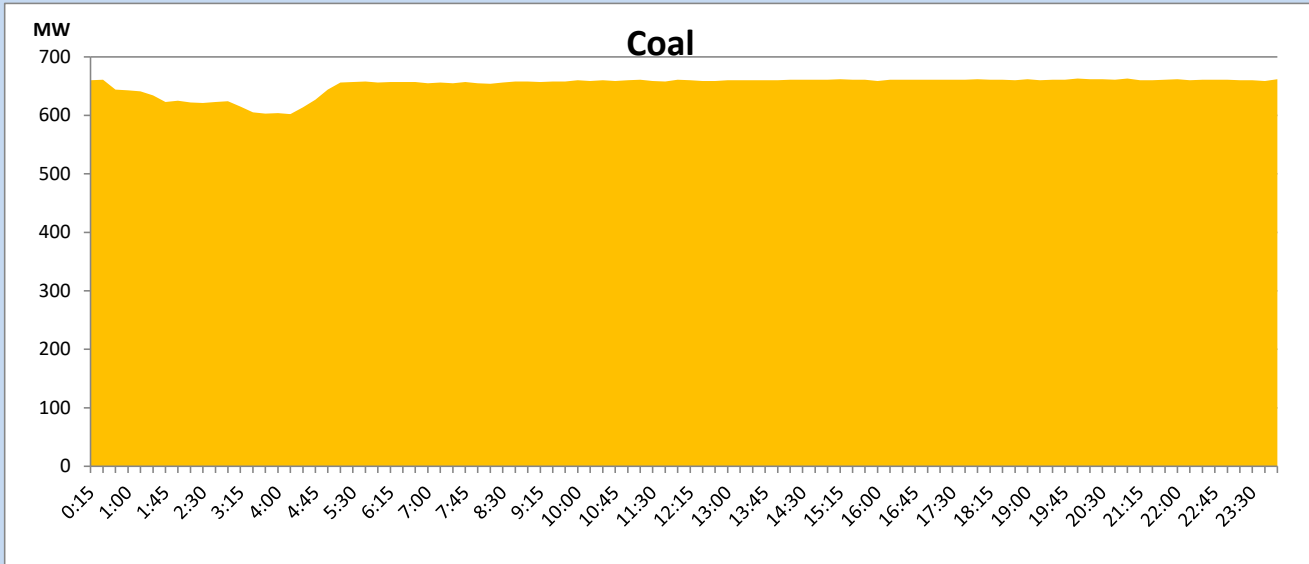
June 9, 2023

Solar and wind data is based on Telemetered Power Stations only



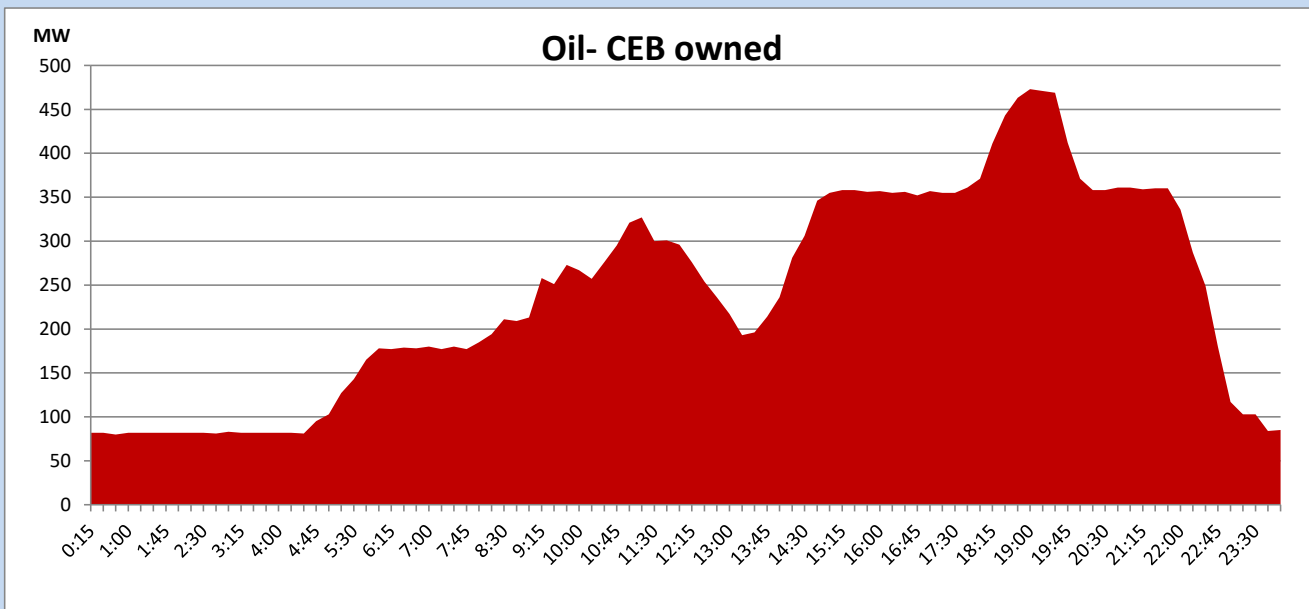
Coal Generation during

June 9, 2023



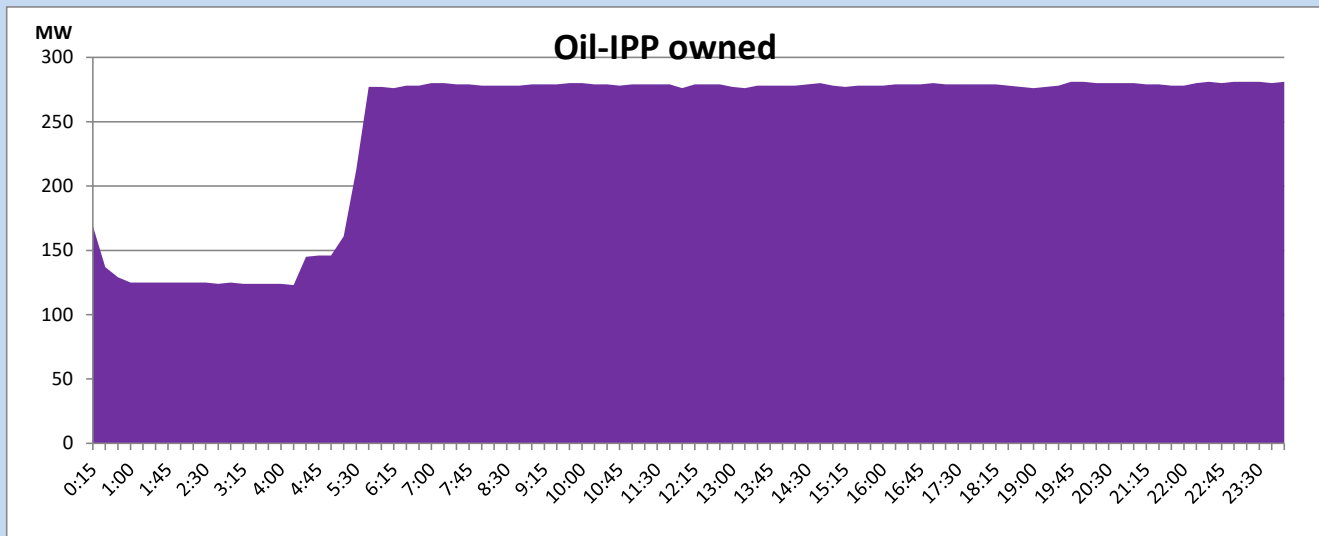
CEB Oil Plant Generation during

June 9, 2023



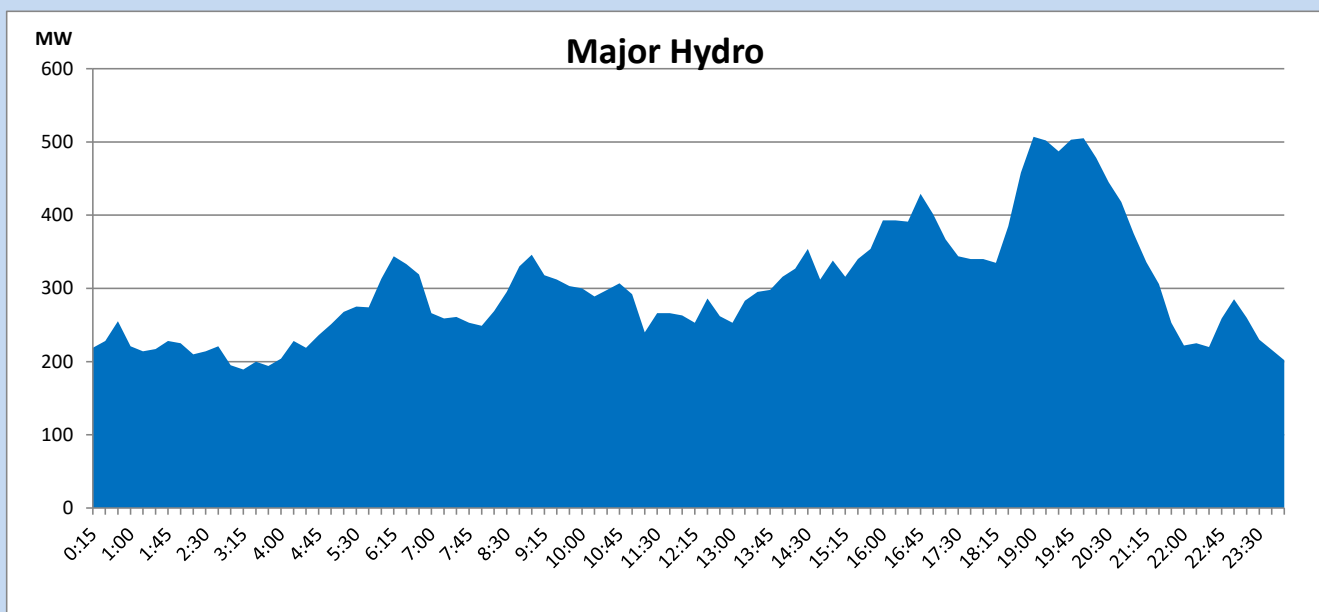
IPP Oil Plant Generation during

June 9, 2023



Major Hydro Generation during

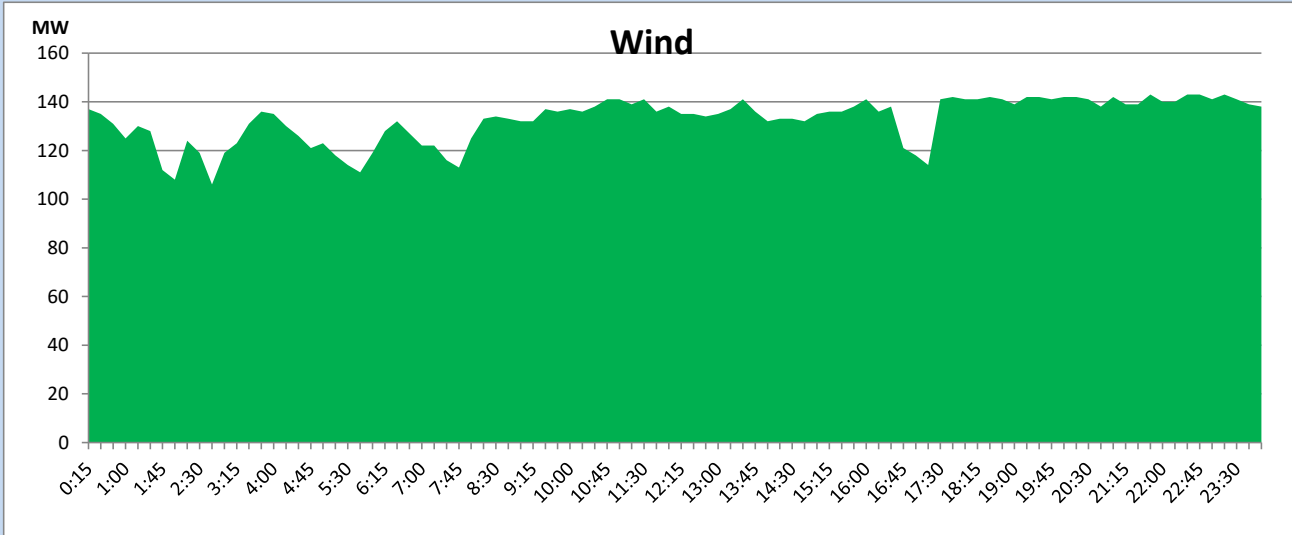
June 9, 2023



Wind Generation during

June 9, 2023

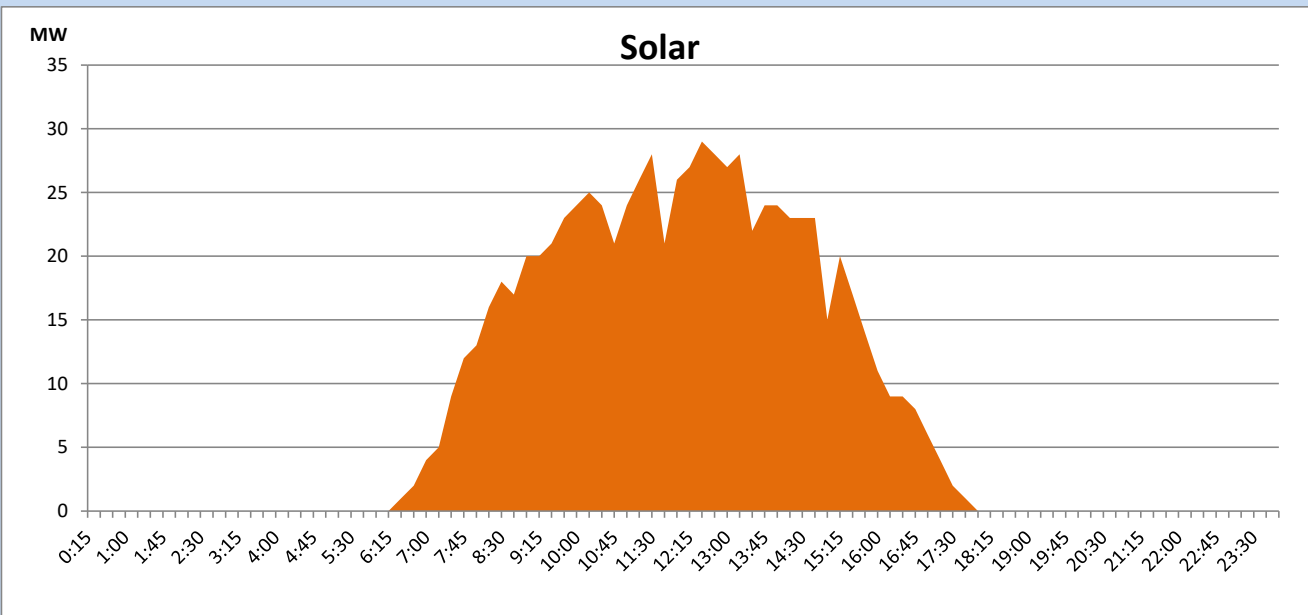
Based on Telemetered Power Stations only



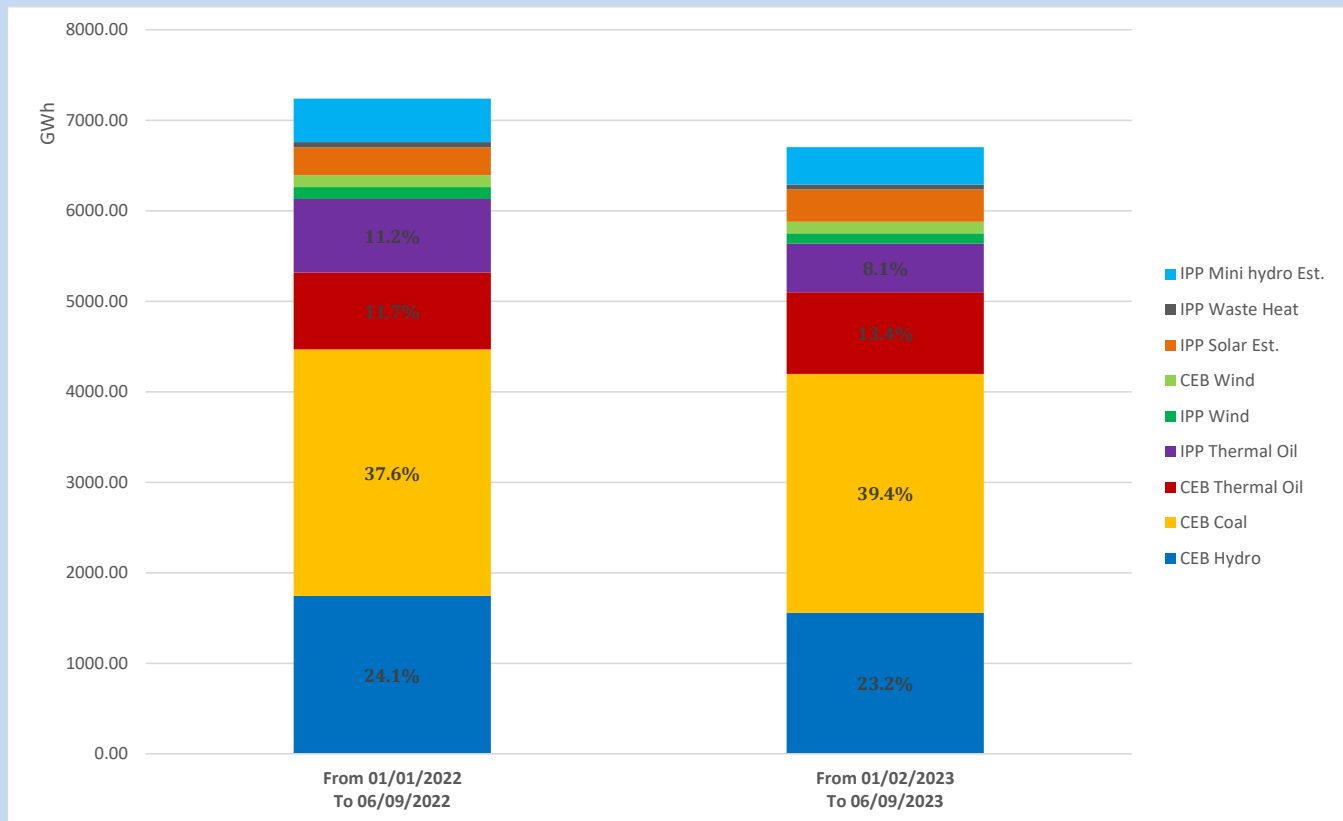
Solar Generation during

June 9, 2023

Based on Telemetered Power Stations only



Cumulative Dispatch Comparison with Last Year



The above figures are including contribution from roof top solar, non telemetered solar and mini hydro plants

Thermal Plant Fuel types

Power Station	Primary Fuel
CEB Thermal	
Sapugaskanda 1	Heavy Fuel
Sapugaskanda 2	Heavy Fuel
Kelanitissa Small Gas Turbines	Auto Diesel
GT 7 - Kelanitissa	Auto Diesel
Kelanitissa CCY	Naphtha or Diesel
Lakvijaya 1	Coal
Lakvijaya 2	Coal
Lakvijaya 3	Coal
Uthuru Janani	Heavy Fuel
Barge CEB	Heavy Fuel
KCCPS -2	Auto Diesel

Power Station	Primary Fuel
Private Thermal	
West Coast	Auto Diesel / Heavy Fuel

Major Incidents reported during the day

June 9, 2023

- 01) Hambanthota 220/132/33kV T/F 02 tripped at 8:05hrs due to operation of Differential protection. Hambanthota 220/132/33kV T/F 02 restored at 9:20hrs
- 02) Sapu A unit 01 tripped at 9:17hrs due to AVR fault. Sapu A unit 01 resumed generation at 10:46hrs.
- 03) Sapu A unit 02 tripped at 10:01hrs due to crankshaft bearing fault. Sapu A unit 02 made available at 21:22hrs.
- 04) Matara - Embilipitiya 132kV cct tripped at 10:35hrs from both ends due to operation of Distance protection. Matara - Embilipitiya cct restored at 11:05hrs.
- 05) Kilinochchi - Chunnakkum 132kV cct 01 tripped & A/R from both ends at 16:24hrs due to operation of Distance protection.