

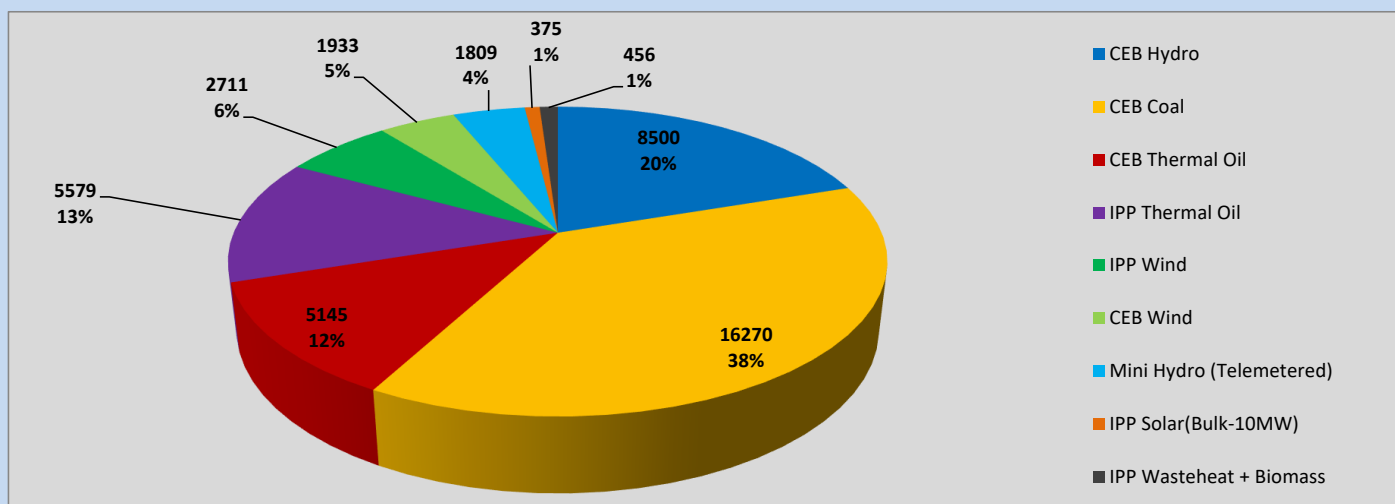
Generation and Reservoirs Statistics

June 8, 2023



PUBLIC UTILITIES COMMISSION OF SRI LANKA

Daily Generation Mix in MWh



Total Generation (Excluding estimated figures) =

42,778 MWh

Estimated figures of CEB generation report

Estimated unserved energy = 0.00 GWh
 Estimated Mini Hydro (Non telemetered) = 2271 MWh
 Estimated IPP Solar PV (Bulk 1-10MW) = 304 MWh
 Estimated Solar Roof Top PV = 1890 MWh

Cumulative Dispatch

Following data excludes the contribution from roof top solar, non telemetered solar and mini hydro plants

For Current Month

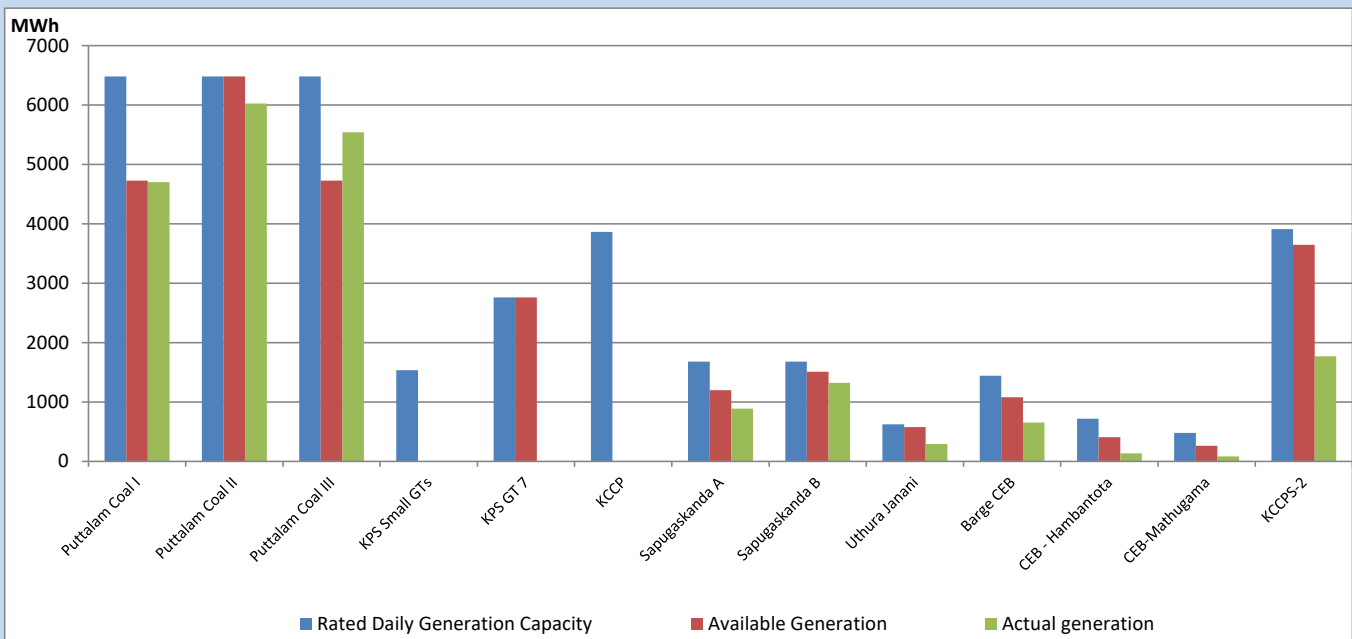
Category	Dispatch (GWh)	
CEB Hydro	72	22.57%
CEB Coal	132	41.32%
CEB Thermal Oil	49	15.40%
IPP Thermal	17	5.43%
SPP Wind	16	5.05%
CEB Wind	15	4.69%
Mini Hydro (Telemetered)	11	3.50%
IPP Solar(Bulk-10MW)	3	0.88%
IPP Wasteheat + BMP	4	1.15%
Total	319	

For Current Year

Category	Dispatch (GWh)	
CEB Hydro	1,553	25.55%
CEB Coal	2,627	43.22%
CEB Thermal Oil	897	14.75%
IPP Thermal	534	8.79%
SPP Wind	107	1.76%
CEB Wind	126	2.08%
Mini Hydro (Telemetered)	137	2.26%
IPP Solar(Bulk-10MW)	46	0.76%
IPP Wasteheat	51	0.84%
Total	6,077	

CEB owned Thermal Plant Dispatch

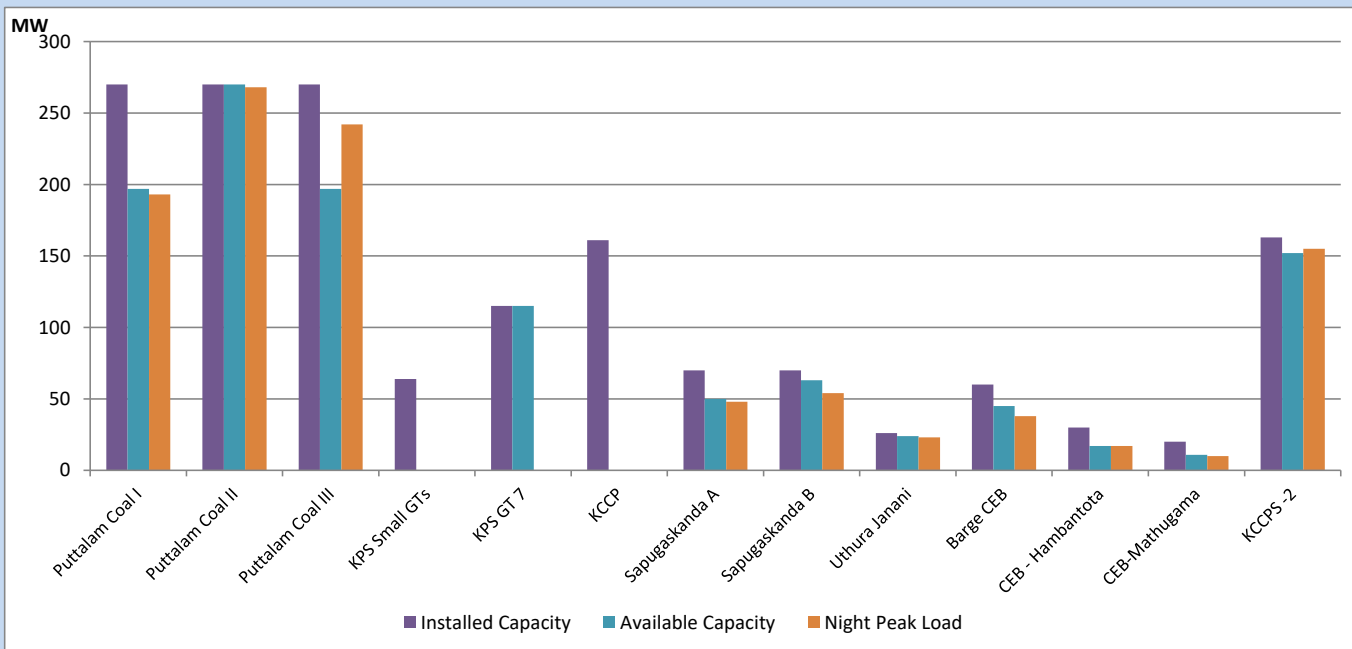
June 8, 2023



Available Generation is estimated based on plant availability at 6.00am on

June 9, 2023

CEB owned Thermal Plant Loading at the Night Peak



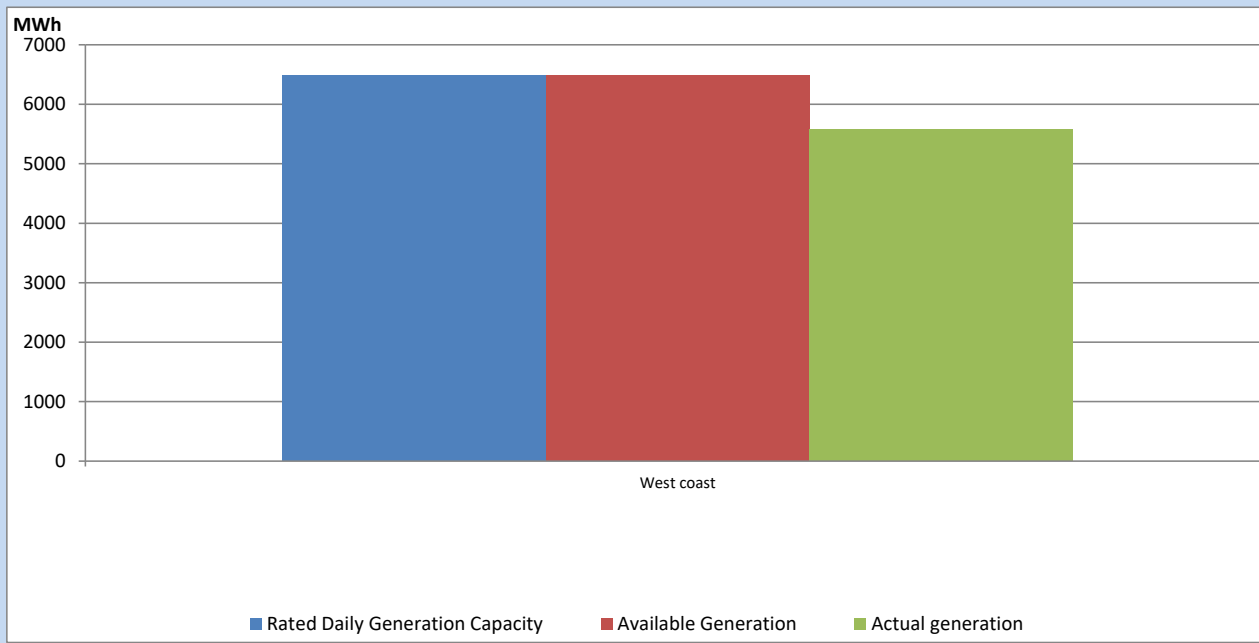
Note-

Plant availability is recorded at 6.00 am on

June 9, 2023

IPP owned Thermal Plant Dispatch

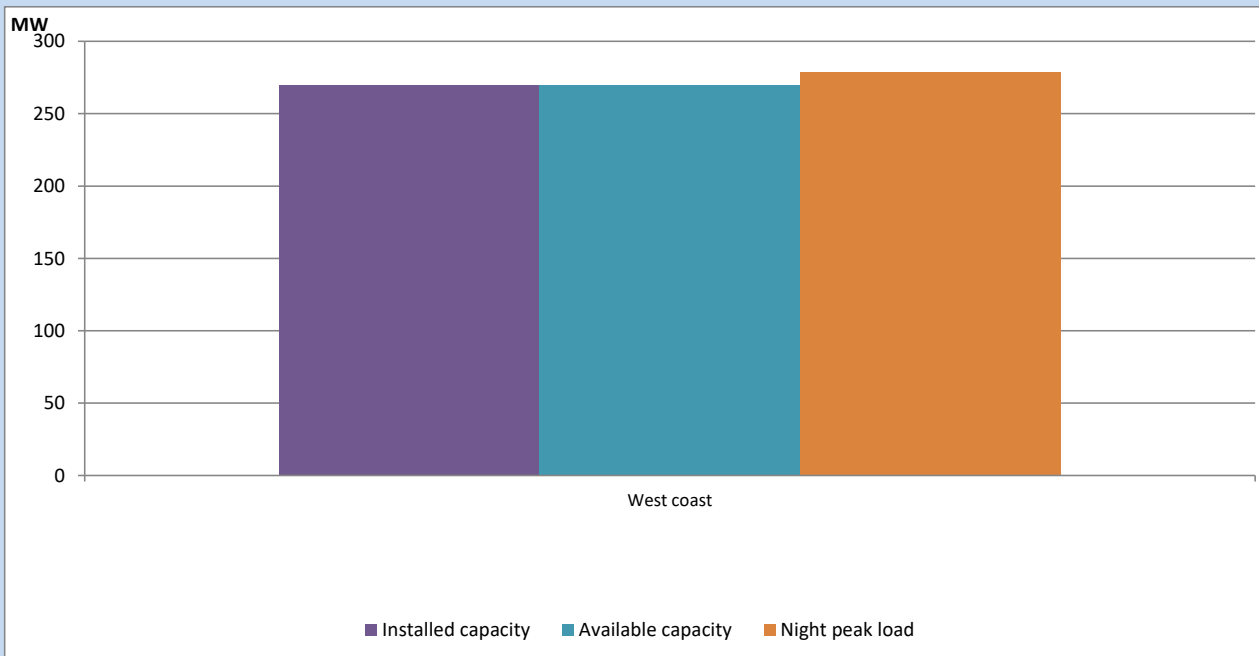
June 8, 2023



Available Generation is estimated based on plant availability at 6.00am on

June 9, 2023

IPP owned Thermal Plant Loading at the Night Peak

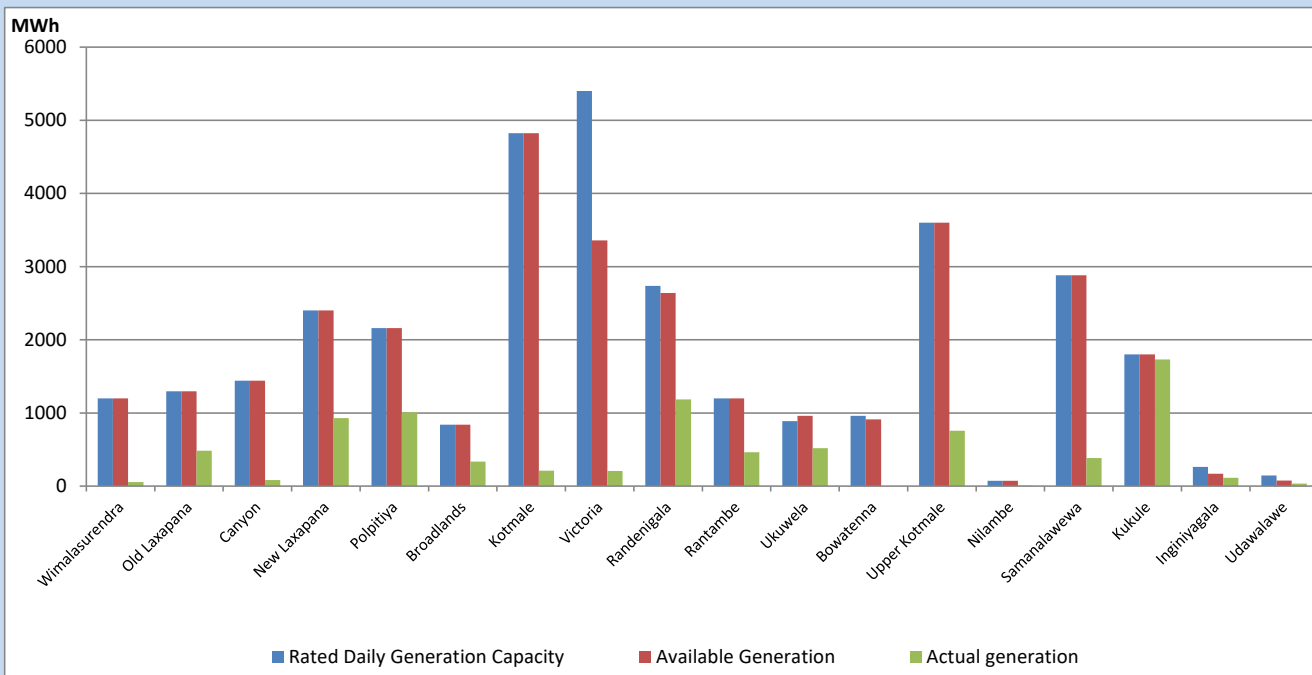


Note- Plant availability is recorded at 6.00 am on

June 9, 2023

Major Hydro Plant Dispatch

June 8, 2023

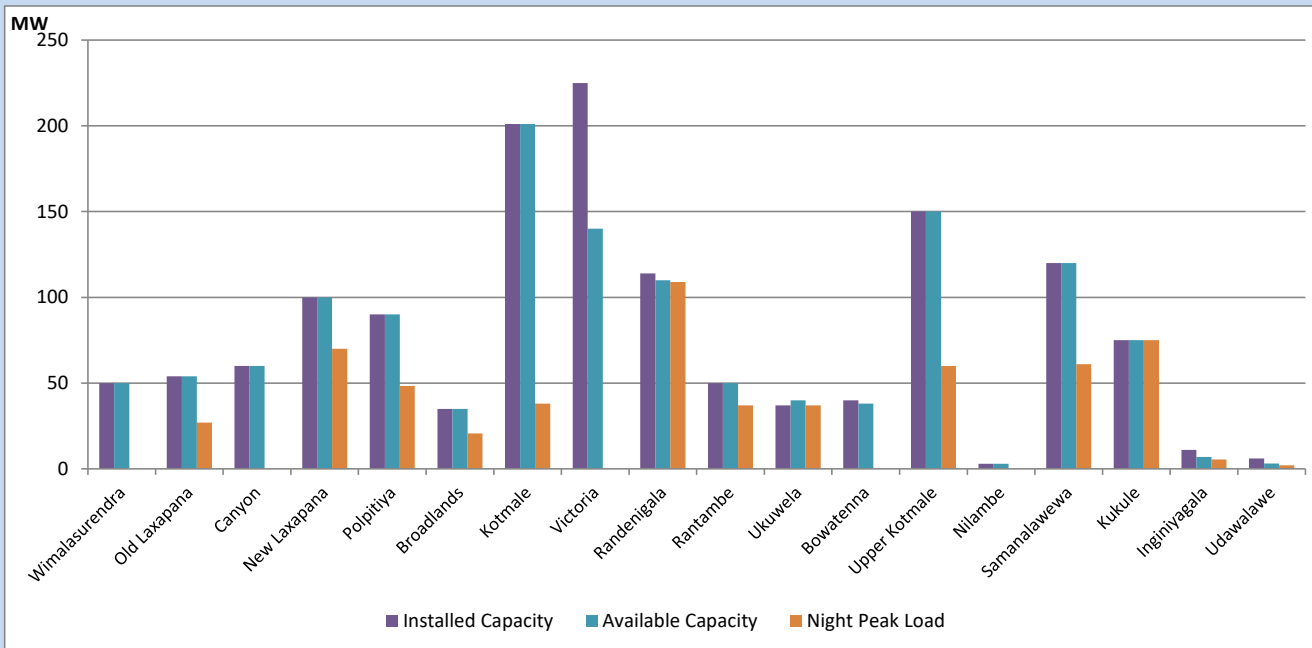


Available Generation is estimated based on plant availability at 6.00am on
Broadlands power plant is operating in the Commissioning Stage

June 9, 2023

Major Hydro Plant Loading at Night Peak

June 8, 2023



Note- Plant availability is recorded at 6.00 am on
Broadlands power plant is operating in the Commissioning Stage

June 9, 2023

Summary of Major Plant performance

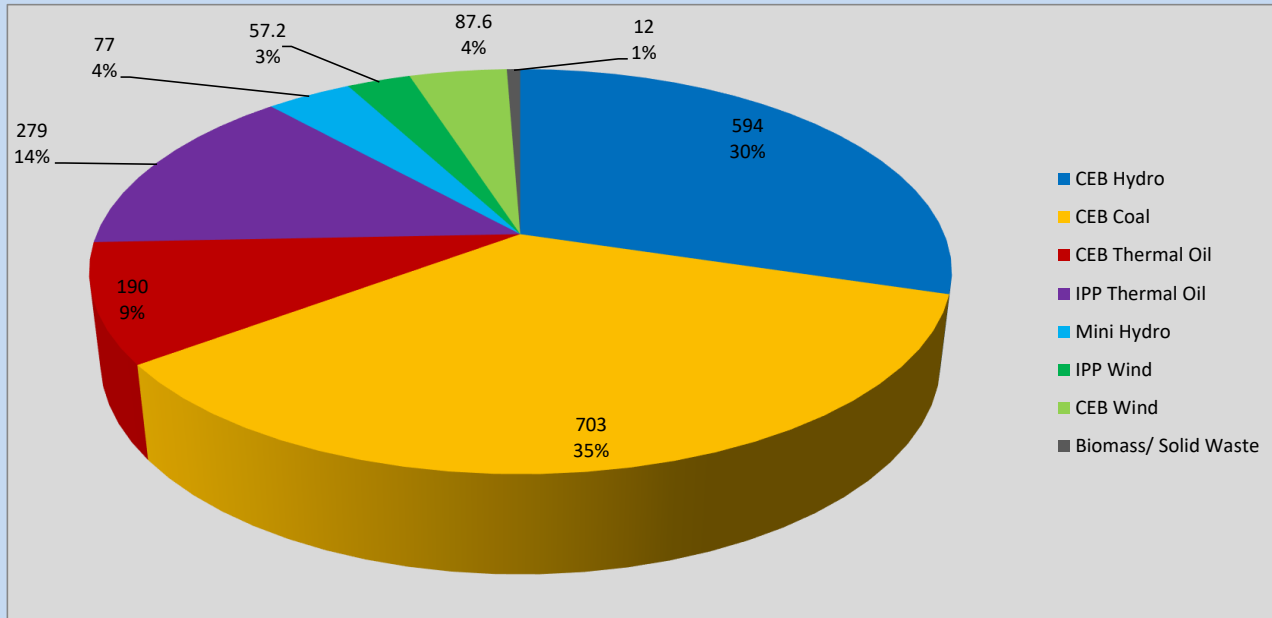
Plant	Installed Capacity	Plant Availability	Night peak Load	Plant Dispatch
	(MW)	(MW)	(MW)	(MWh)
Wimalasurendra	50	50	0	54
Old Laxapana	54	54	27	482
Canyon	60	60	0	84
New Laxapana	100	100	70	929
Polpitiya	90	90	48	1,010
Broadlands	35	35	21	335
Kotmale	201	201	38	210
Victoria	225	140	0	206
Randenigala	114	110	109	1,186
Rantambe	50	50	37	463
Ukuwela	37	40	37	517
Bowatenna	40	38	0	0
Upper Kotmale	150	150	60	756
Nilambe	3	3	0	8
Samanalawewa	120	120	61	382
Kukule	75	75	75	1,730
Inginiyagala	11	7	5	114
Udawalawe	6	3	2	34
Puttalam Coal I	270	197	193	4,703
Puttalam Coal II	270	270	268	6,027
Puttalam Coal III	270	197	242	5,540
KPS Small GTs	64	0	0	0
KPS GT 7	115	115	0	0
KCCP	161	0	0	0
Sapugaskanda A	70	50	48	887
Sapugaskanda B	70	63	54	1,323
Uthura Janani	26	24	23	292
Barge CEB	60	45	38	653
CEB-Hambantota	30	17	17	136
CEB-Mathugama	20	11	10	85
ACE Matara	24	0	0	0
Asia Power	50	0	0	0
KCCPS -2	163	152	155	1,769
West Coast	270	270	279	5,579
Nothern Power	36	0	0	0
ACE Embilipitiya	93	0	0	0
Total	3,483	2,737	2,151	42,778

Plant availability is the availability recorded at 6 am on

June 9, 2023

Contribution to the Night Peak in MW

June 8, 2023

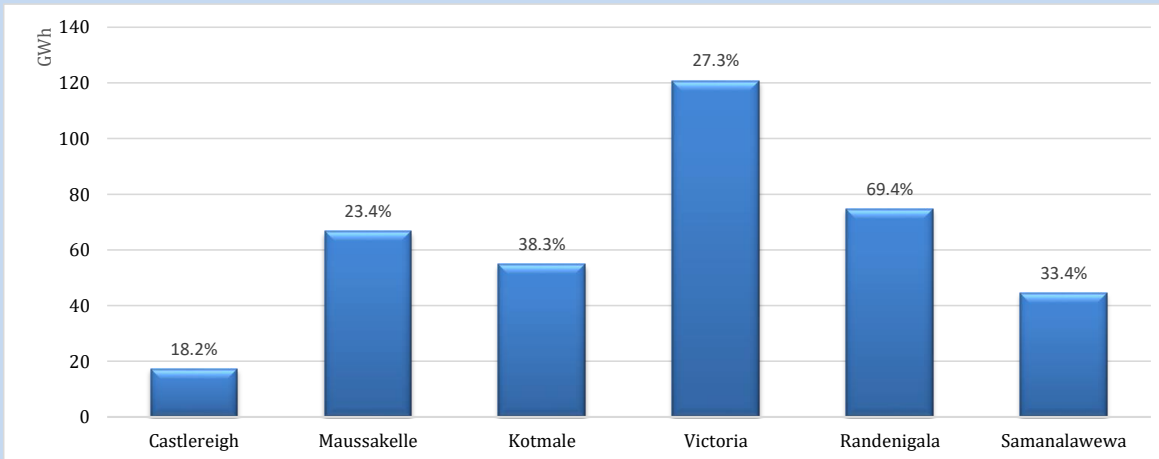


Night Peak*	2,154 MW
Day Peak Maximum Demand	1,988 MW
Day Peak Minimum Demand	1,820 MW
Off Peak Minimum Demand	1,251 MW

Above figures are excluding contribution from roof top solar, non telemetered solar and mini hydro plants

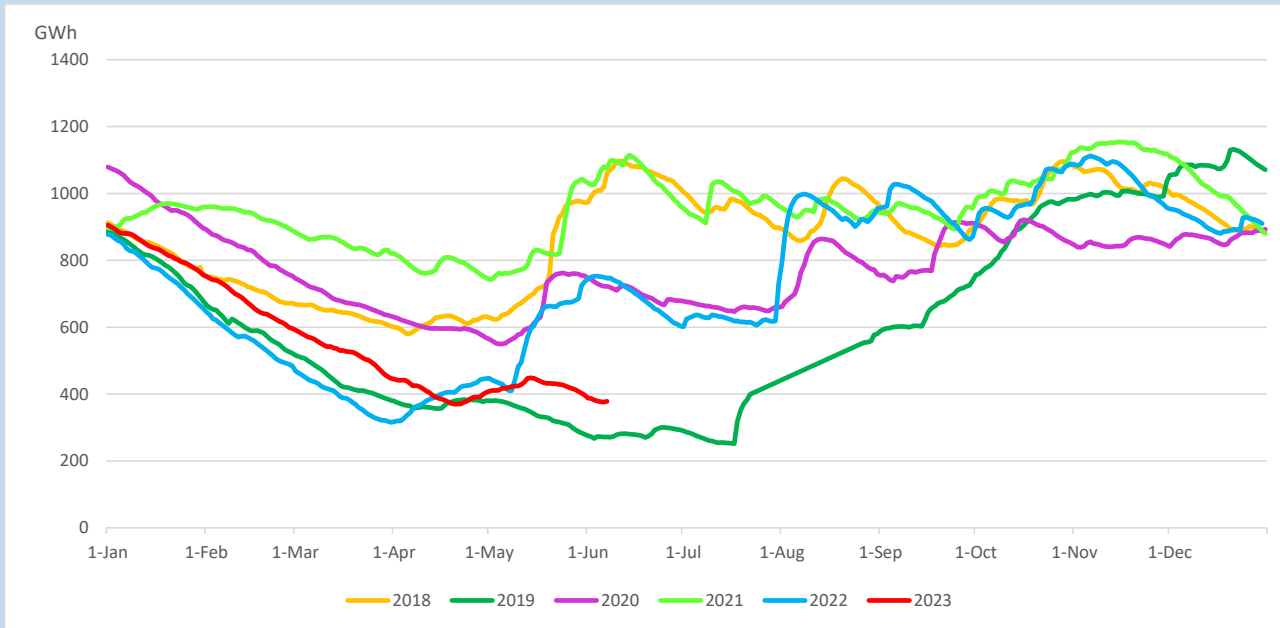
Reservoir Levels -

as at 06.00 Hr on June 9, 2023

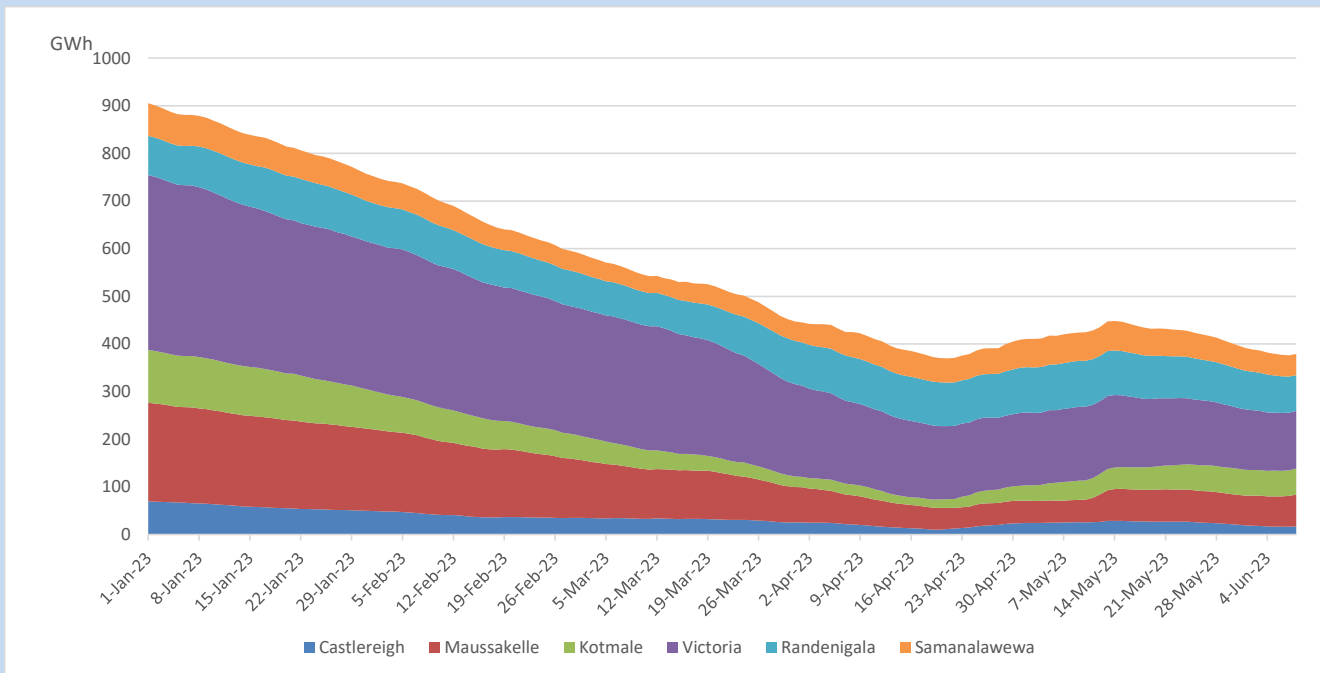


Total Reservoir Level	378.6 GWh
% of Total capacity	31.4%

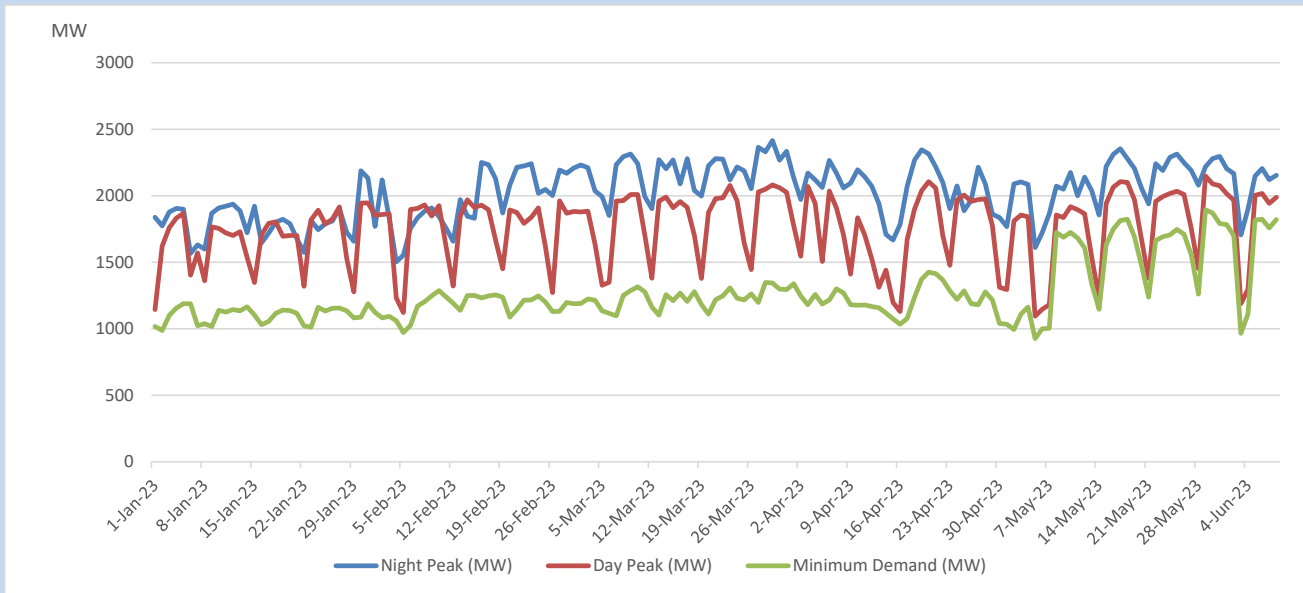
Comparison of Total Reservoir Storage Levels with Past Years



Variation of Major Hydro Reservoir Levels in the current year (GWh)



Variation of Demand during the current year

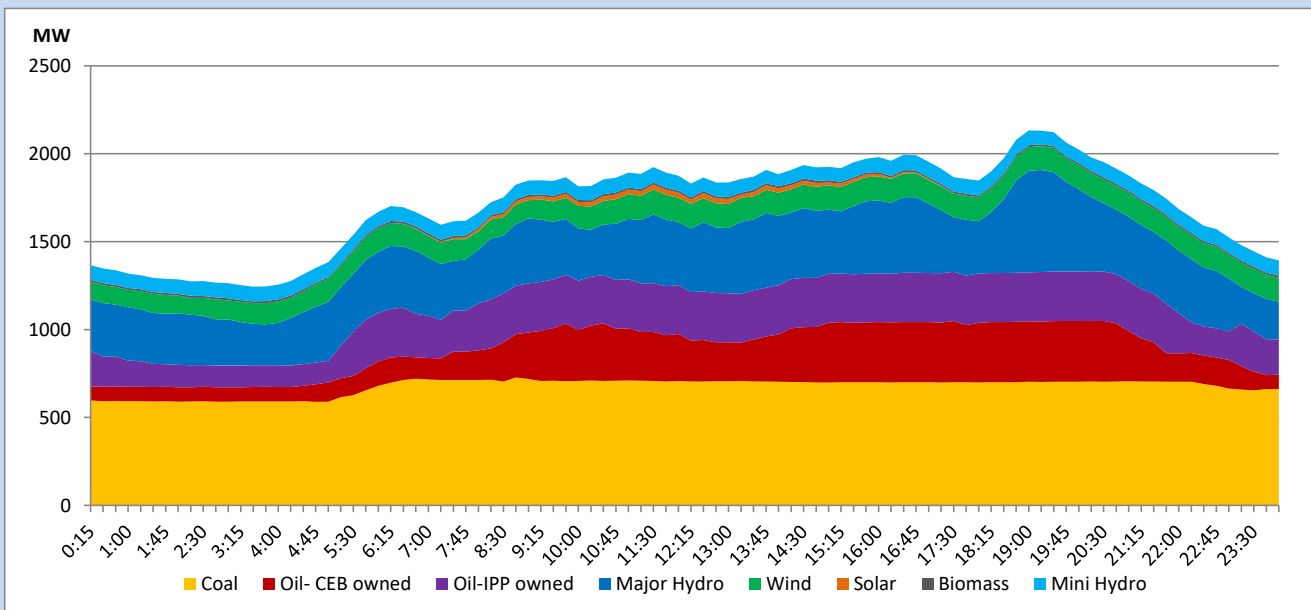


The above figures are excluding contribution from roof top solar, non telemetered solar and mini hydro plants

Daily Load Curve

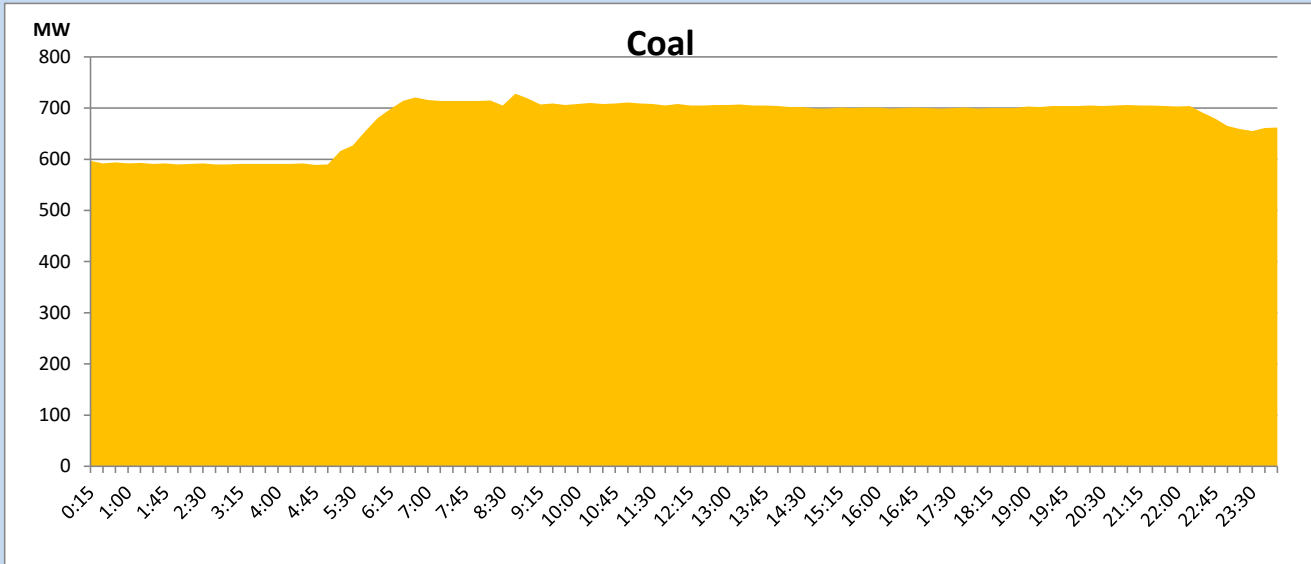
June 8, 2023

Solar and wind data is based on Telemetered Power Stations only



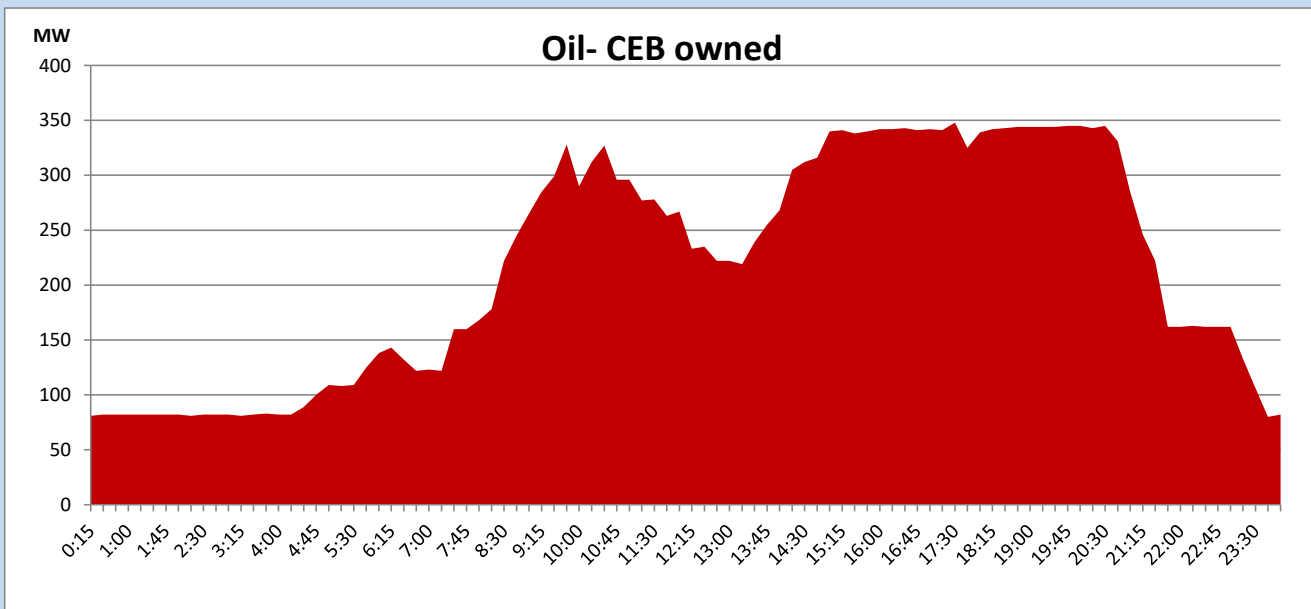
Coal Generation during

June 8, 2023



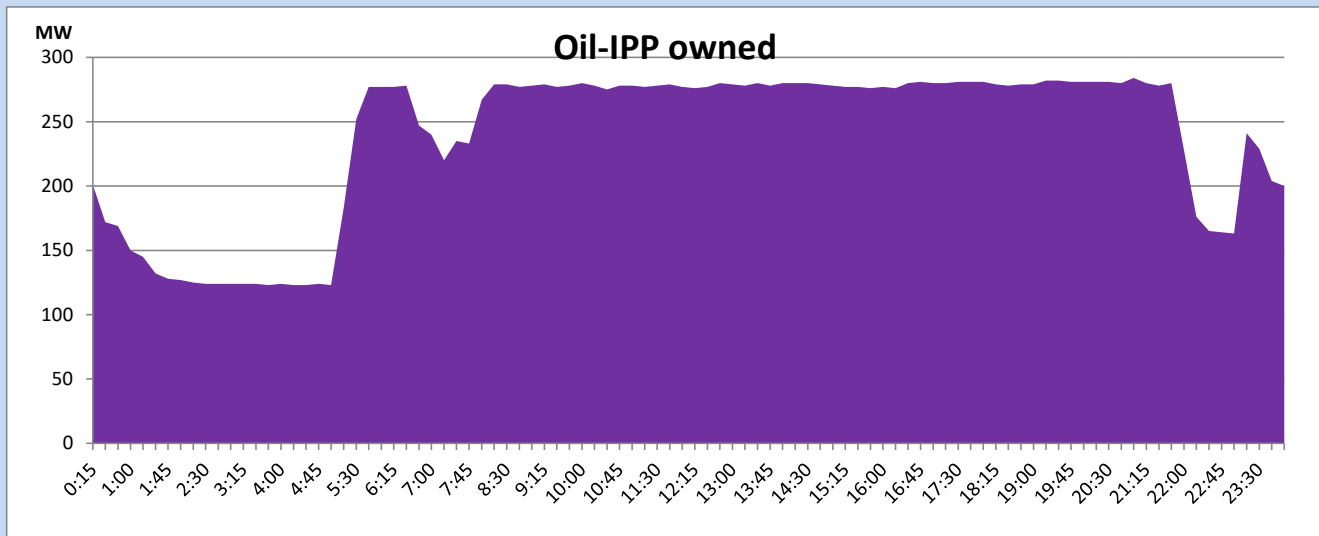
CEB Oil Plant Generation during

June 8, 2023



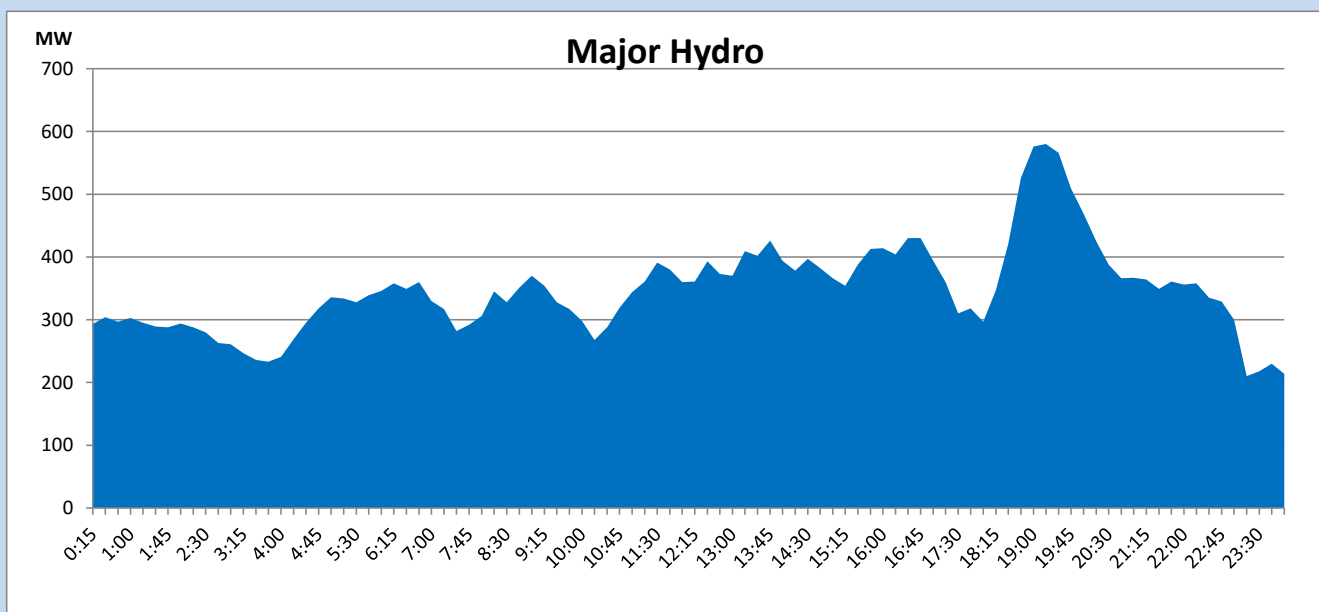
IPP Oil Plant Generation during

June 8, 2023



Major Hydro Generation during

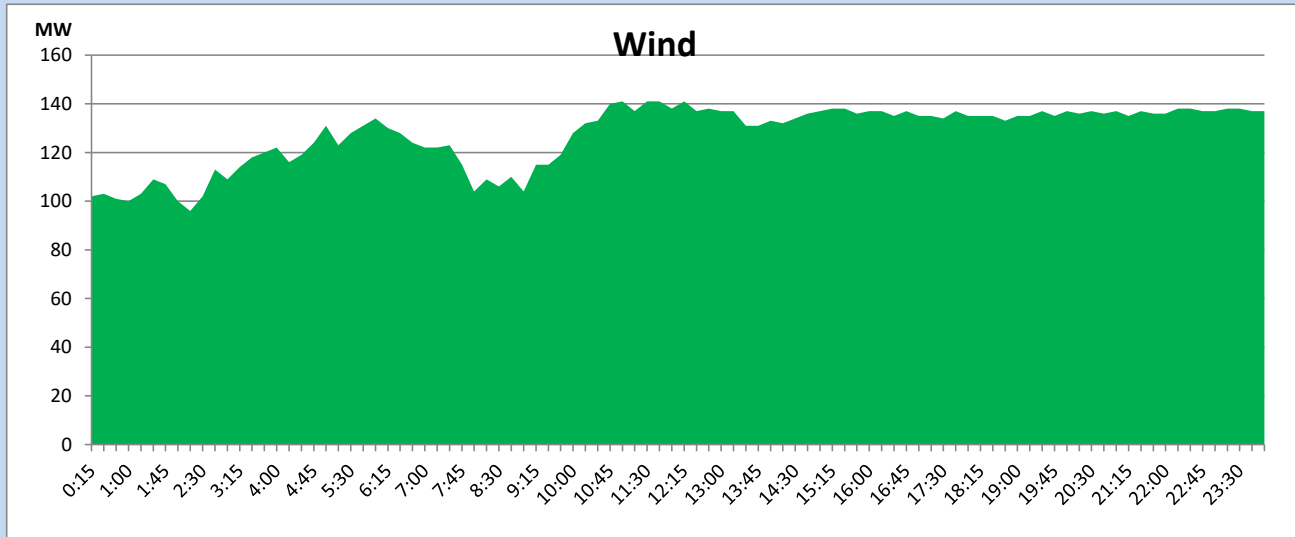
June 8, 2023



Wind Generation during

June 8, 2023

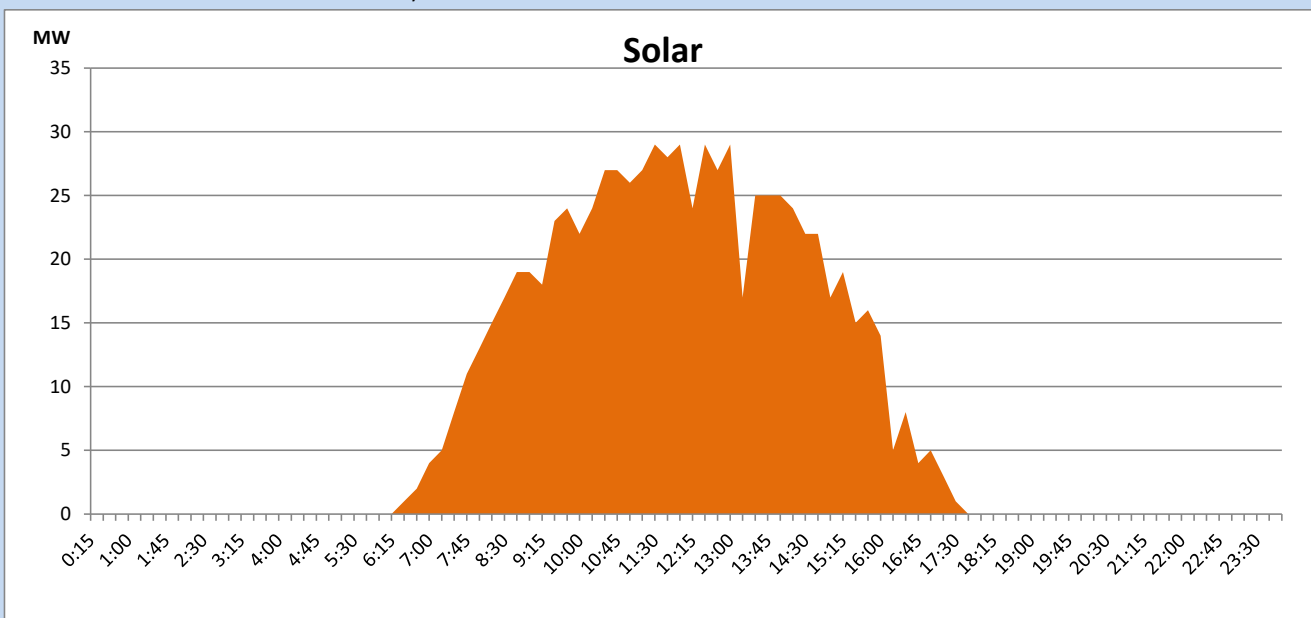
Based on Telemetered Power Stations only



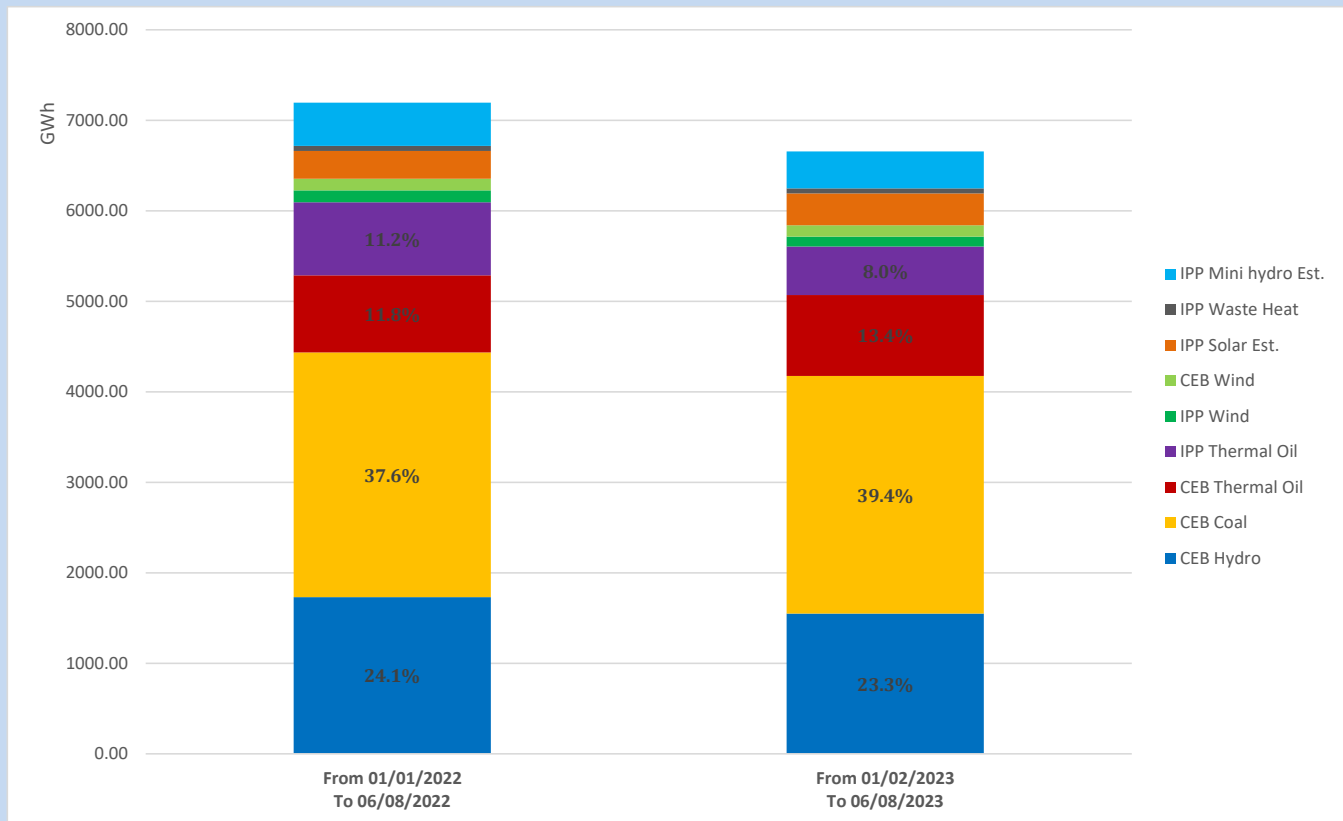
Solar Generation during

June 8, 2023

Based on Telemetered Power Stations only



Cumulative Dispatch Comparison with Last Year



The above figures are including contribution from roof top solar, non telemetered solar and mini hydro plants

Thermal Plant Fuel types

Power Station	Primary Fuel
CEB Thermal	
Sapugaskanda 1	Heavy Fuel
Sapugaskanda 2	Heavy Fuel
Kelanitissa Small Gas Turbines	Auto Diesel
GT 7 - Kelanitissa	Auto Diesel
Kelanitissa CCY	Naphtha or Diesel
Lakvijaya 1	Coal
Lakvijaya 2	Coal
Lakvijaya 3	Coal
Uthuru Janani	Heavy Fuel
Barge CEB	Heavy Fuel
KCCPS -2	Auto Diesel

Power Station	Primary Fuel
Private Thermal	
West Coast	Auto Diesel / Heavy Fuel

Major Incidents reported during the day

June 8, 2023

- 01) The availability of the Power Barge was limited to 30MW starting from 11:26hrs to 17:19hrs due to a cooling system failure.
- 02) KPS GT 07 started at 17:01hrs but tripped at 17:42hrs without synchronizing due to high vibrations. As a result, KPS GT 07 was unable to resume generation for the night peak.
- 03) LVPS unit 03 was de-loaded to 196MW (net) at 23:08hrs due to a CW pump breakdown. LVPS unit 03 is yet to reach full load.