

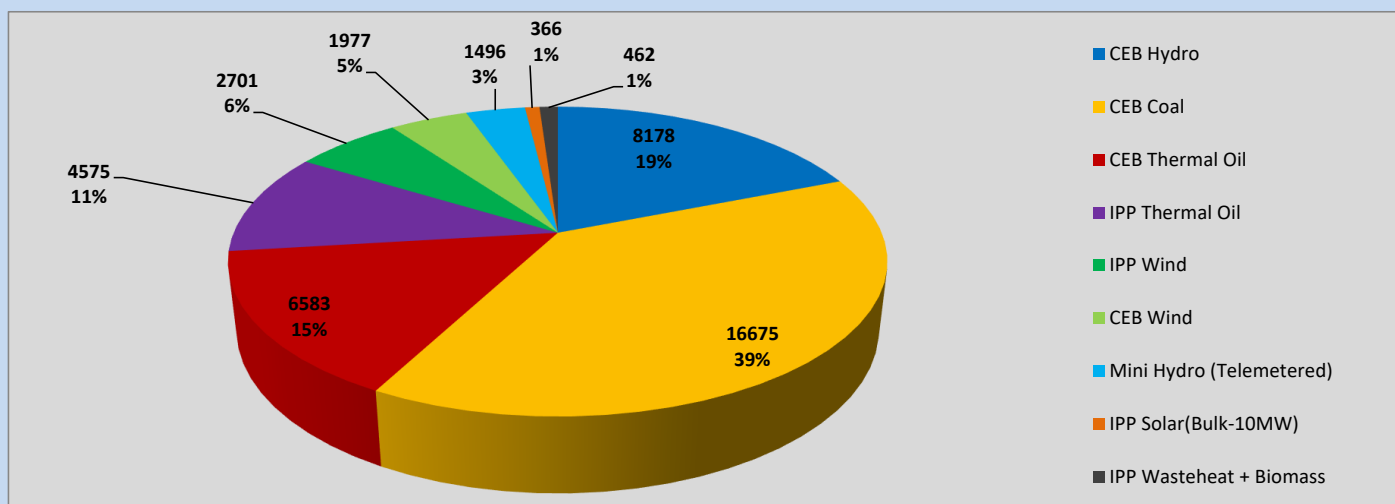
Generation and Reservoirs Statistics

June 7, 2023



PUBLIC UTILITIES COMMISSION OF SRI LANKA

Daily Generation Mix in MWh



Total Generation (Excluding estimated figures) =

43,013 MWh

Estimated figures of CEB generation report

Estimated unserved energy = 0.00 GWh

Estimated Mini Hydro (Non telemetered) = 2584 MWh

Estimated IPP Solar PV (Bulk 1-10MW) = 304 MWh

Estimated Solar Roof Top PV = 1890 MWh

Cumulative Dispatch

Following data excludes the contribution from roof top solar, non telemetered solar and mini hydro plants

For Current Month

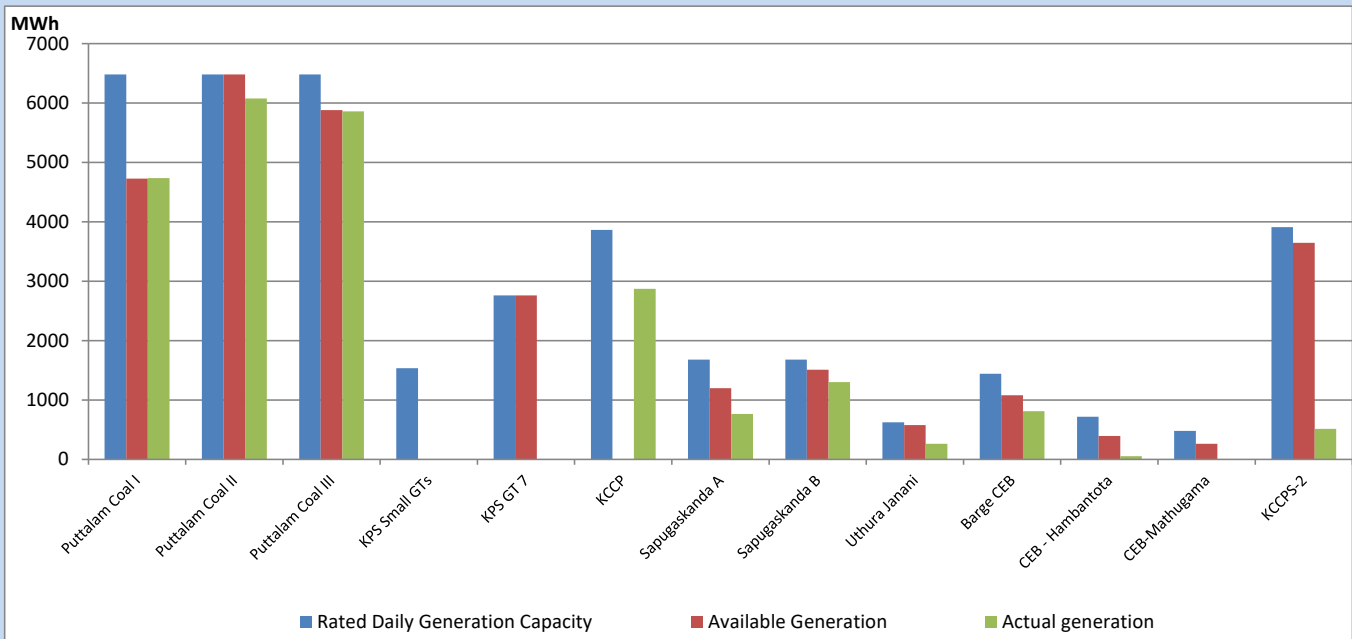
Category	Dispatch (GWh)	
CEB Hydro	64	22.98%
CEB Coal	116	41.83%
CEB Thermal Oil	44	15.92%
IPP Thermal	12	4.25%
SPP Wind	13	4.85%
CEB Wind	13	4.72%
Mini Hydro (Telemetered)	9	3.39%
IPP Solar(Bulk-10MW)	2	0.88%
IPP Wasteheat + BMP	3	1.17%
Total	277	

For Current Year

Category	Dispatch (GWh)	
CEB Hydro	1,544	25.59%
CEB Coal	2,611	43.26%
CEB Thermal Oil	891	14.77%
IPP Thermal	529	8.76%
SPP Wind	104	1.72%
CEB Wind	124	2.06%
Mini Hydro (Telemetered)	135	2.24%
IPP Solar(Bulk-10MW)	46	0.76%
IPP Wasteheat	50	0.83%
Total	6,035	

CEB owned Thermal Plant Dispatch

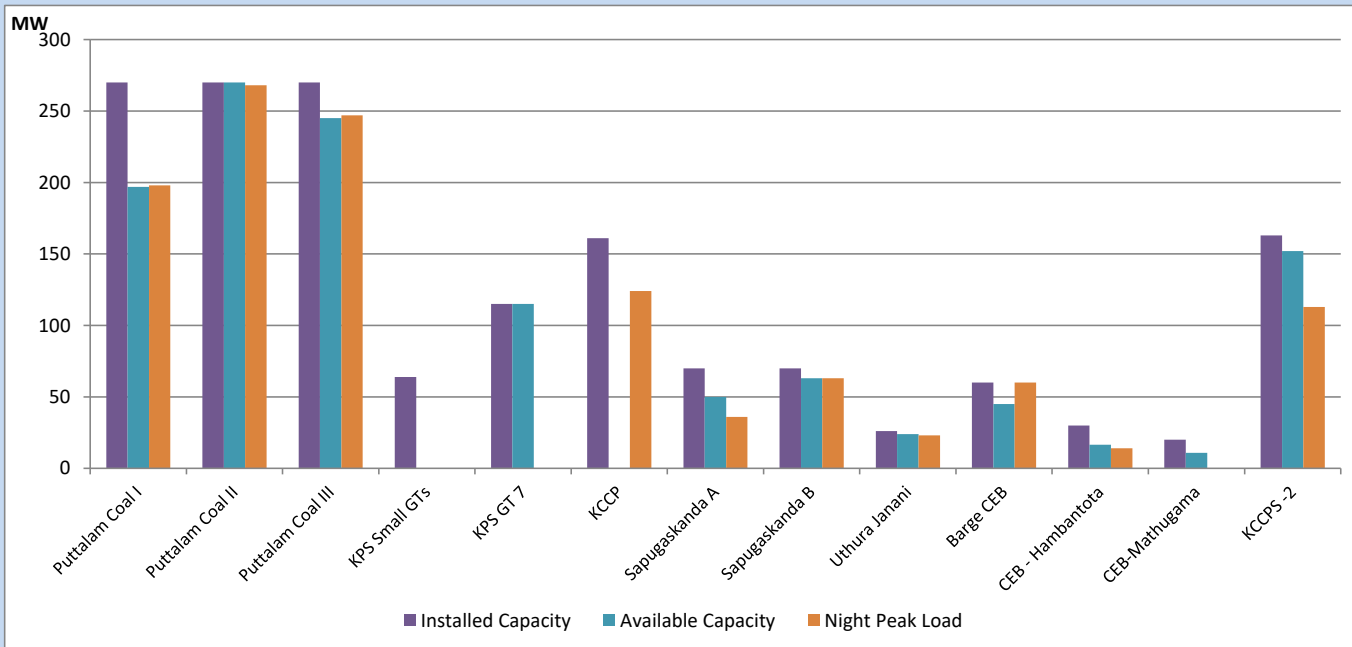
June 7, 2023



Available Generation is estimated based on plant availability at 6.00am on

June 8, 2023

CEB owned Thermal Plant Loading at the Night Peak



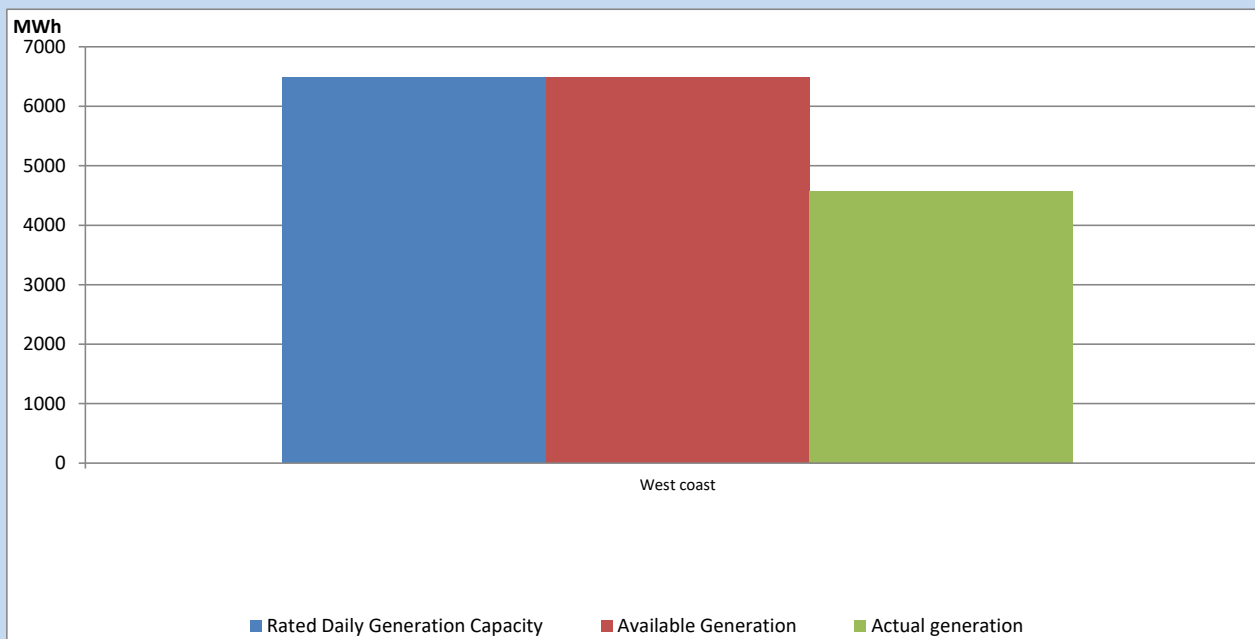
Note-

Plant availability is recorded at 6.00 am on

June 8, 2023

IPP owned Thermal Plant Dispatch

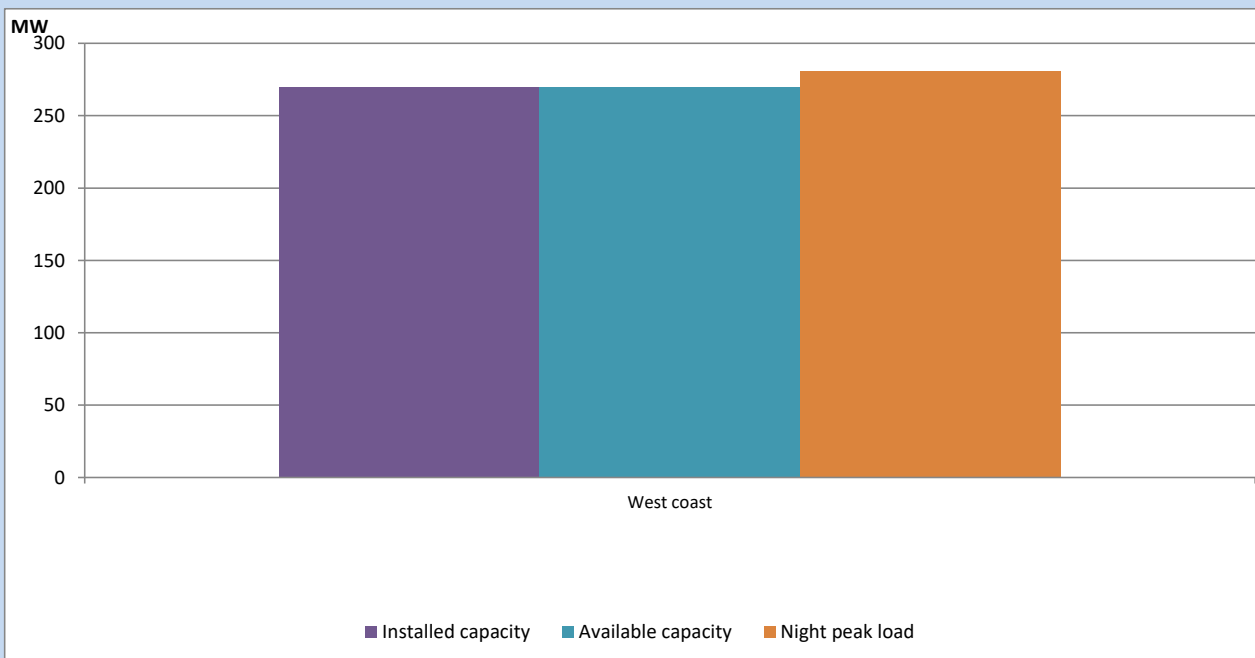
June 7, 2023



Available Generation is estimated based on plant availability at 6.00am on

June 8, 2023

IPP owned Thermal Plant Loading at the Night Peak

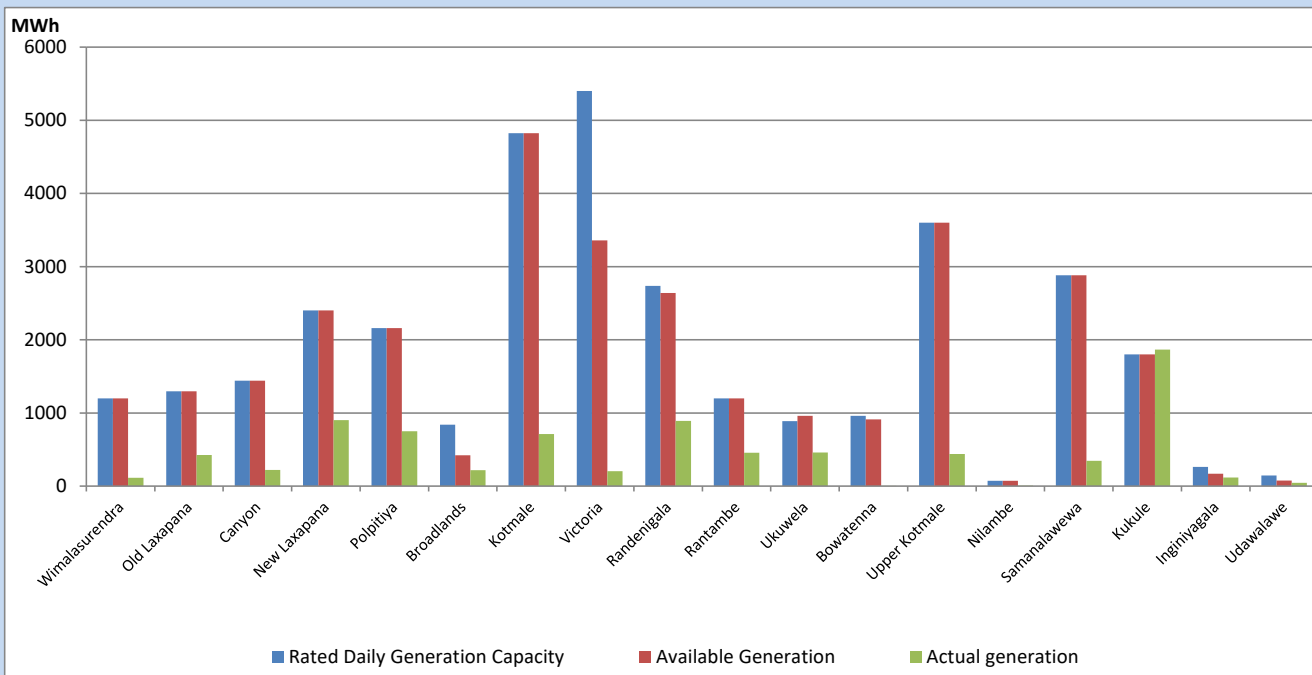


Note- Plant availability is recorded at 6.00 am on

June 8, 2023

Major Hydro Plant Dispatch

June 7, 2023

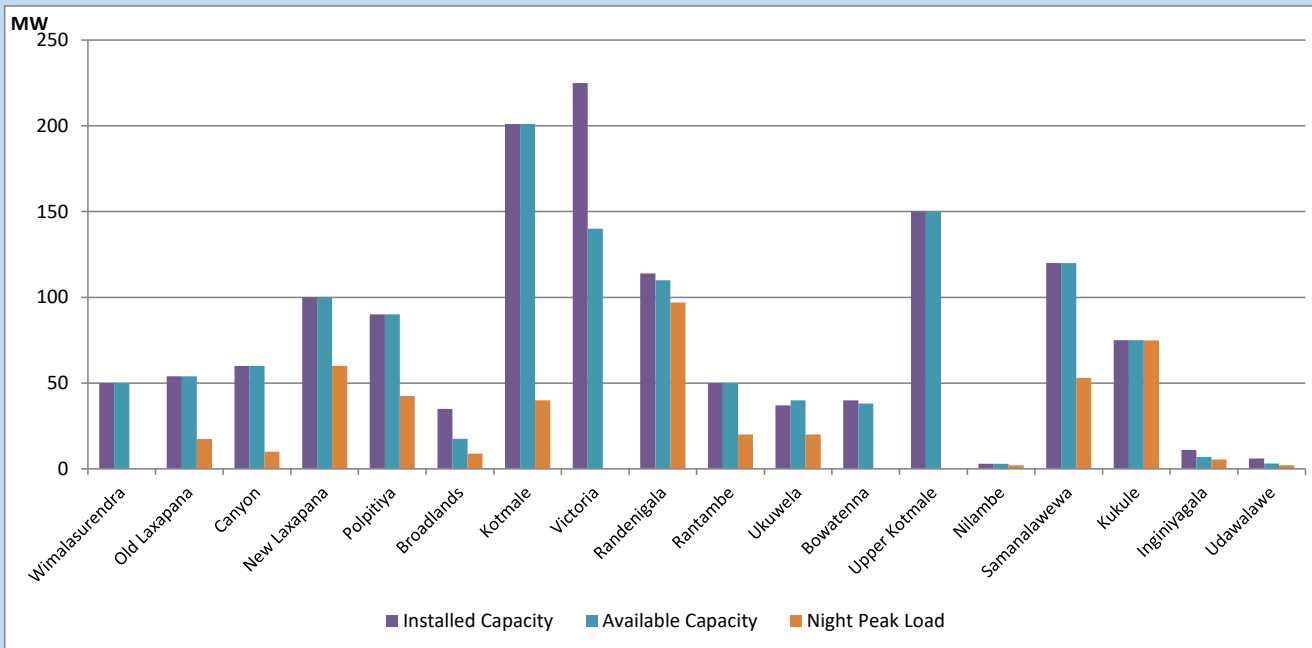


Available Generation is estimated based on plant availability at 6.00am on
Broadlands power plant is operating in the Commissioning Stage

June 8, 2023

Major Hydro Plant Loading at Night Peak

June 7, 2023



Note- Plant availability is recorded at 6.00 am on
Broadlands power plant is operating in the Commissioning Stage

June 8, 2023

Summary of Major Plant performance

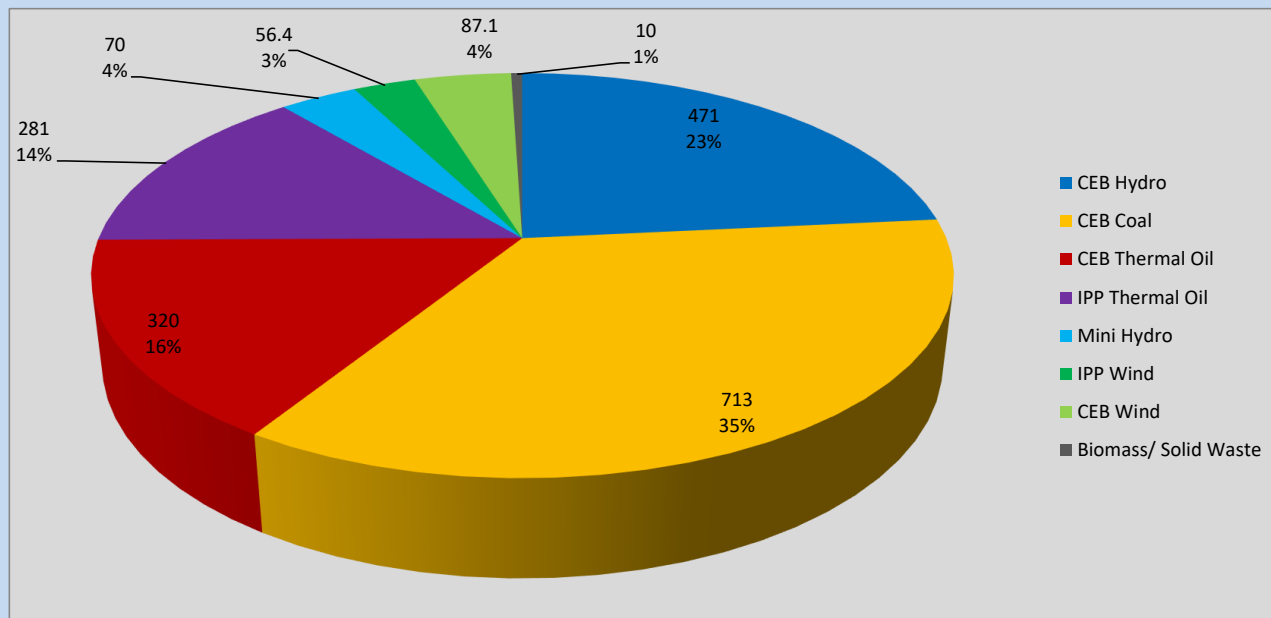
Plant	Installed Capacity	Plant Availability	Night peak Load	Plant Dispatch
	(MW)	(MW)	(MW)	(MWh)
Wimalasurendra	50	50	0	114
Old Laxapana	54	54	17	426
Canyon	60	60	10	220
New Laxapana	100	100	60	903
Polpitiya	90	90	43	750
Broadlands	35	18	9	219
Kotmale	201	201	40	710
Victoria	225	140	0	204
Randenigala	114	110	97	893
Rantambe	50	50	20	457
Ukuwela	37	40	20	459
Bowatenna	40	38	0	4
Upper Kotmale	150	150	0	440
Nilambe	3	3	2	6
Samanalawewa	120	120	53	346
Kukule	75	75	75	1,865
Inginiyagala	11	7	5	116
Udawalawe	6	3	2	46
Puttalam Coal I	270	197	198	4,737
Puttalam Coal II	270	270	268	6,078
Puttalam Coal III	270	245	247	5,860
KPS Small GTs	64	0	0	0
KPS GT 7	115	115	0	0
KCCP	161	0	124	2,871
Sapugaskanda A	70	50	36	765
Sapugaskanda B	70	63	63	1,302
Uthura Janani	26	24	23	262
Barge CEB	60	45	60	814
CEB-Hambantota	30	17	14	53
CEB-Mathugama	20	11	0	0
ACE Matara	24	0	0	0
Asia Power	50	0	0	0
KCCPS -2	163	152	113	516
West Coast	270	270	281	4,575
Nothern Power	36	0	0	0
ACE Embilipitiya	93	0	0	0
Total	3,483	2,767	2,104	43,013

Plant availability is the availability recorded at 6 am on

June 8, 2023

Contribution to the Night Peak in MW

June 7, 2023

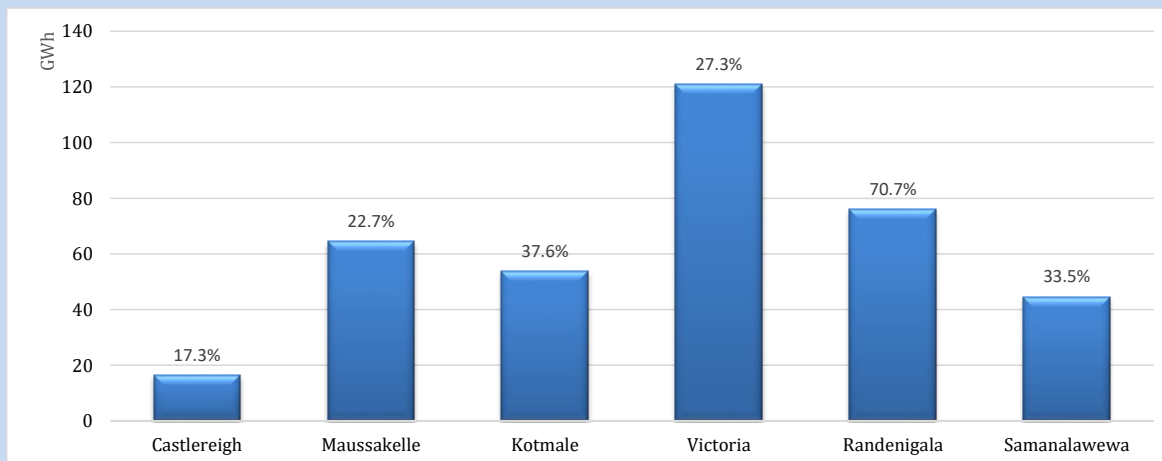


Night Peak*	2,122 MW
Day Peak Maximum Demand	1,943 MW
Day Peak Minimum Demand	1,759 MW
Off Peak Minimum Demand	1,304 MW

Above figures are excluding contribution from roof top solar, non telemetered solar and mini hydro plants

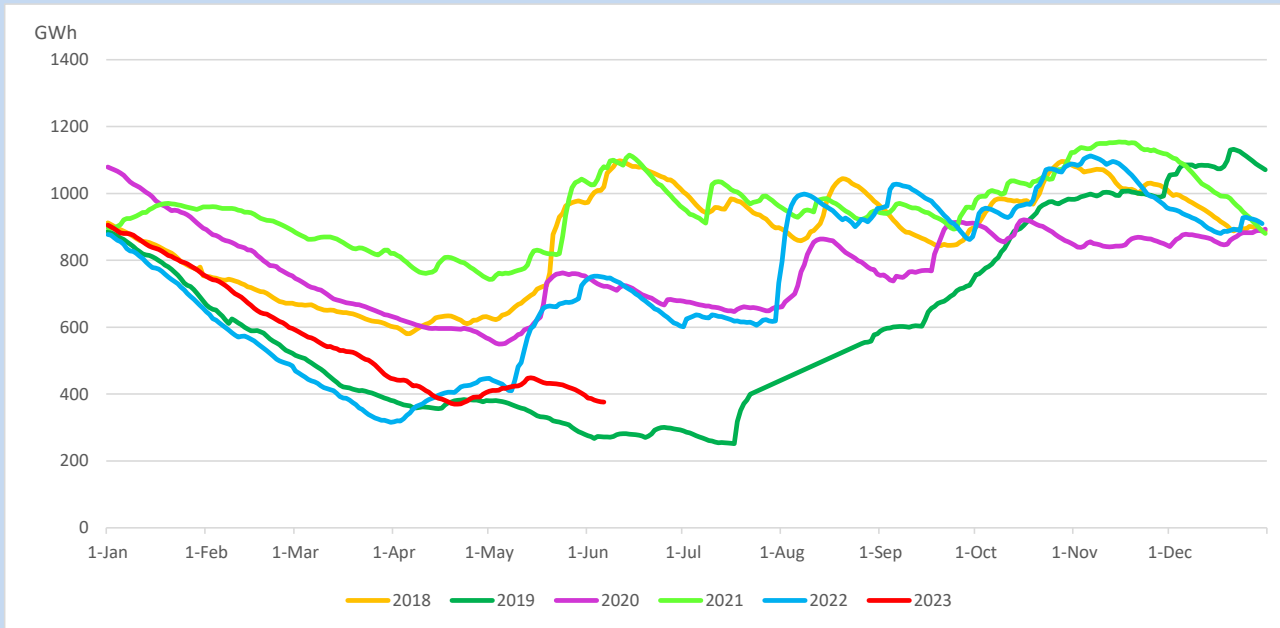
Reservoir Levels -

as at 06.00 Hr on June 8, 2023

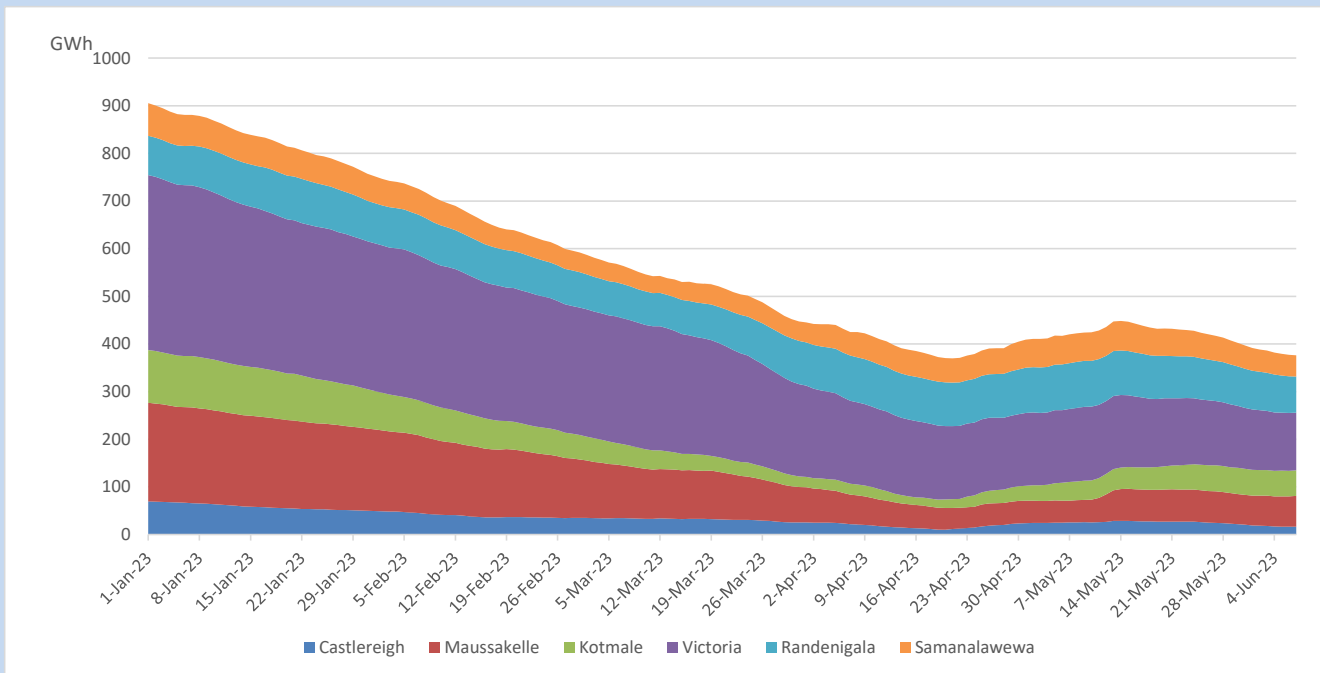


Total Reservoir Level	376.3 GWh
% of Total capacity	31.2%

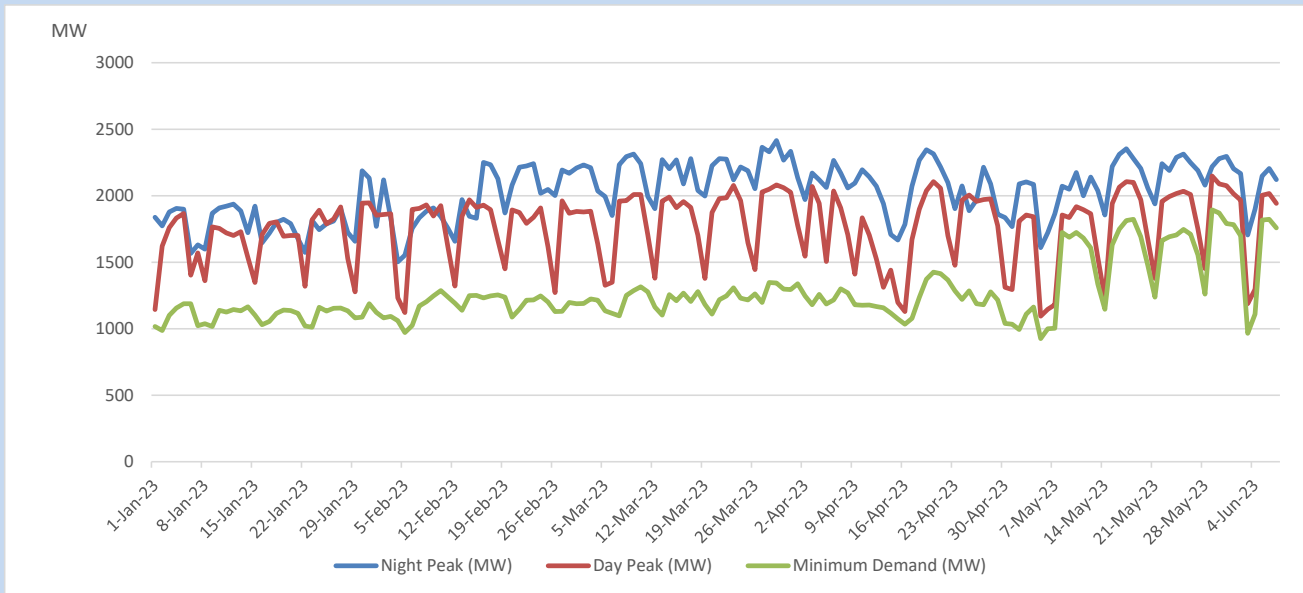
Comparison of Total Reservoir Storage Levels with Past Years



Variation of Major Hydro Reservoir Levels in the current year (GWh)



Variation of Demand during the current year

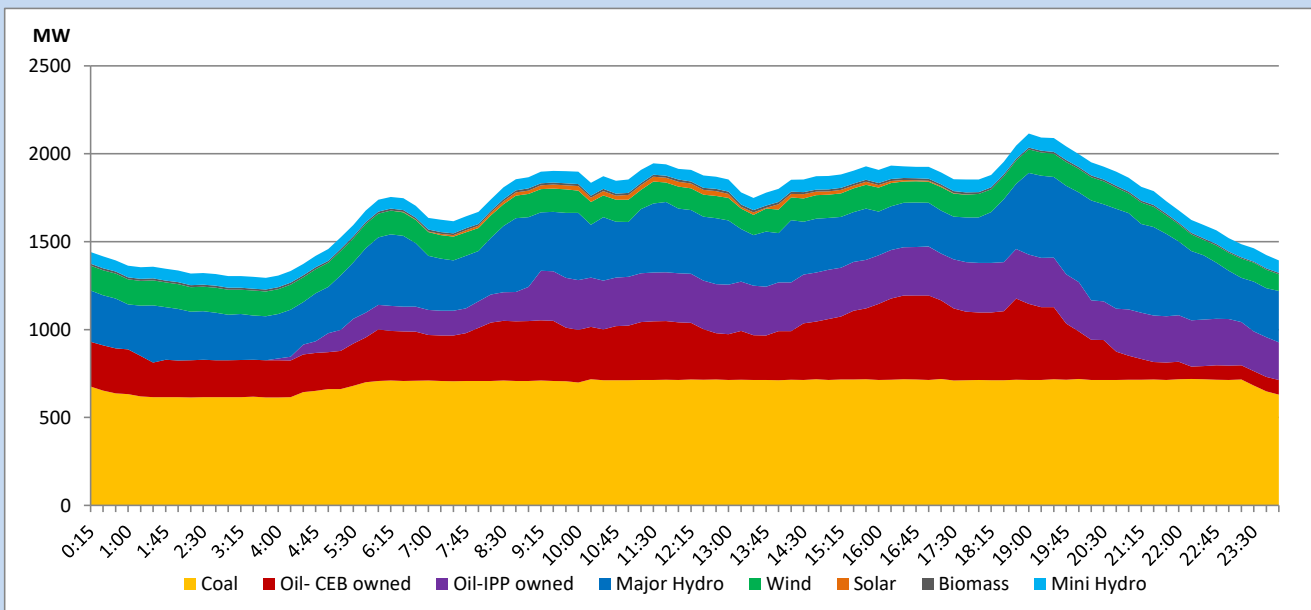


The above figures are excluding contribution from roof top solar, non telemetered solar and mini hydro plants

Daily Load Curve

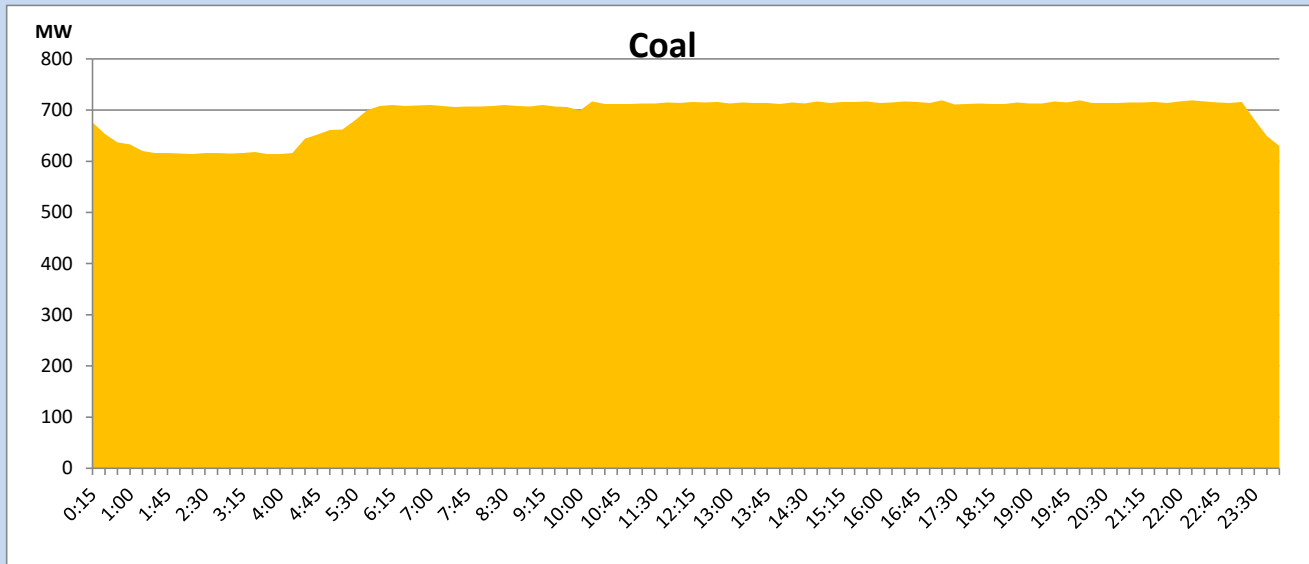
June 7, 2023

Solar and wind data is based on Telemetered Power Stations only



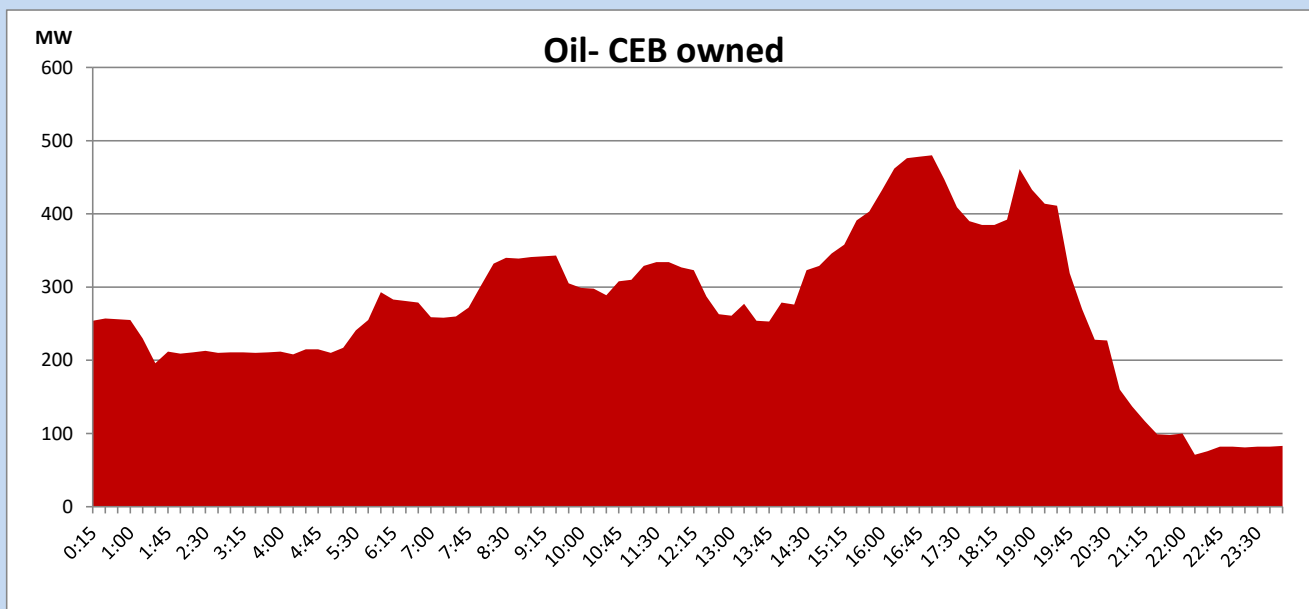
Coal Generation during

June 7, 2023



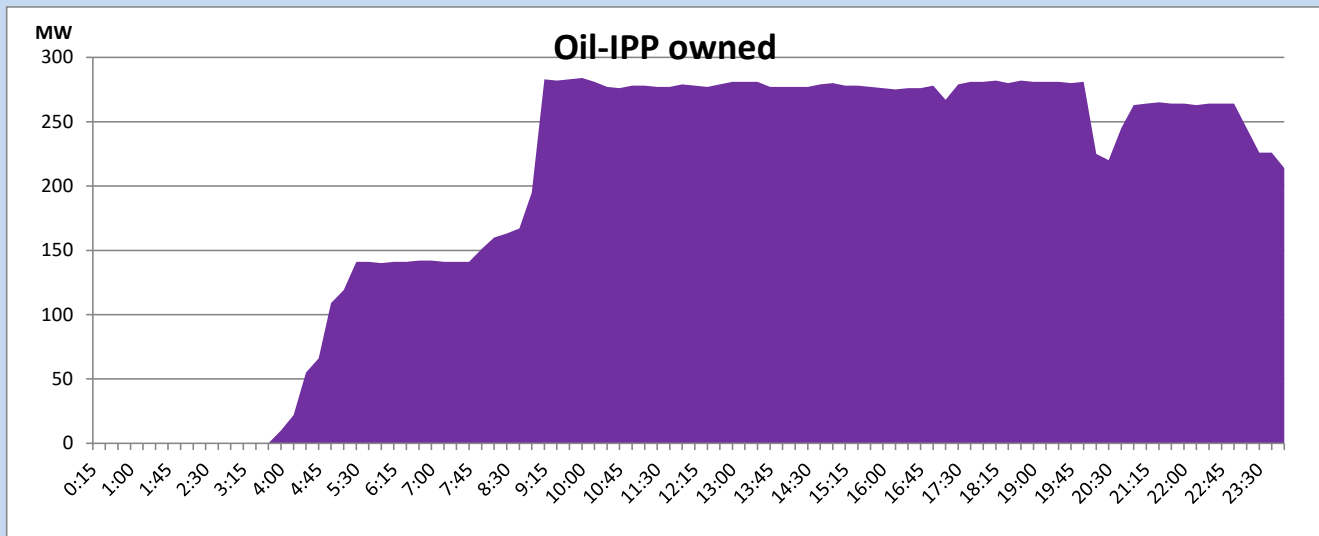
CEB Oil Plant Generation during

June 7, 2023



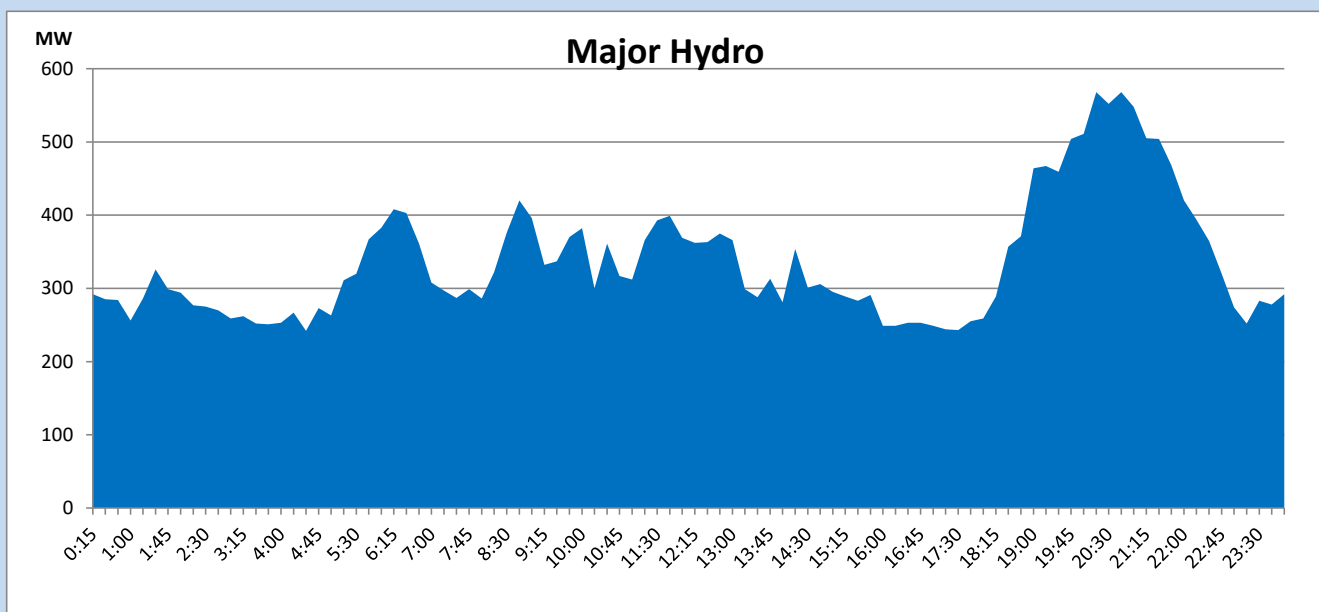
IPP Oil Plant Generation during

June 7, 2023



Major Hydro Generation during

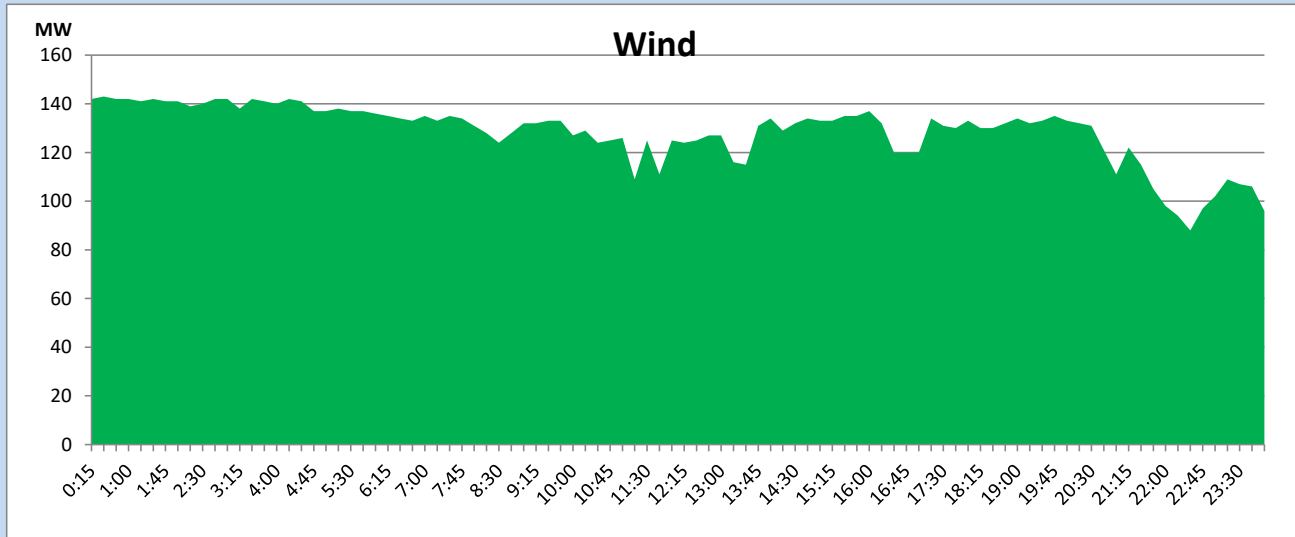
June 7, 2023



Wind Generation during

June 7, 2023

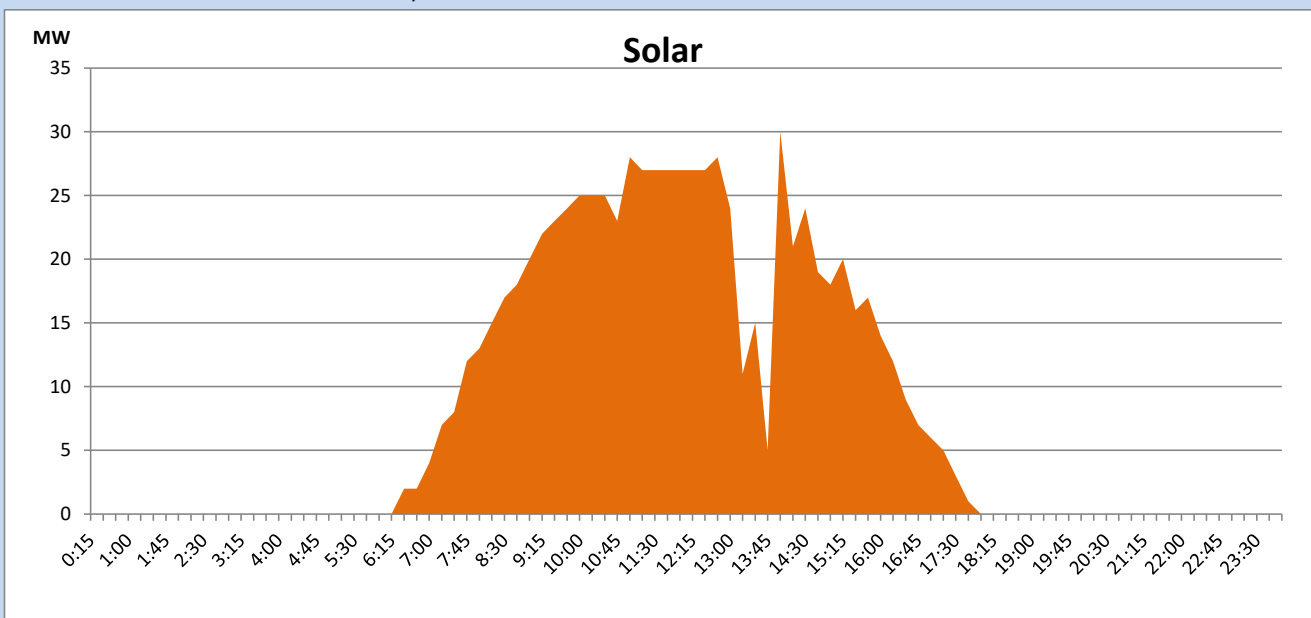
Based on Telemetered Power Stations only



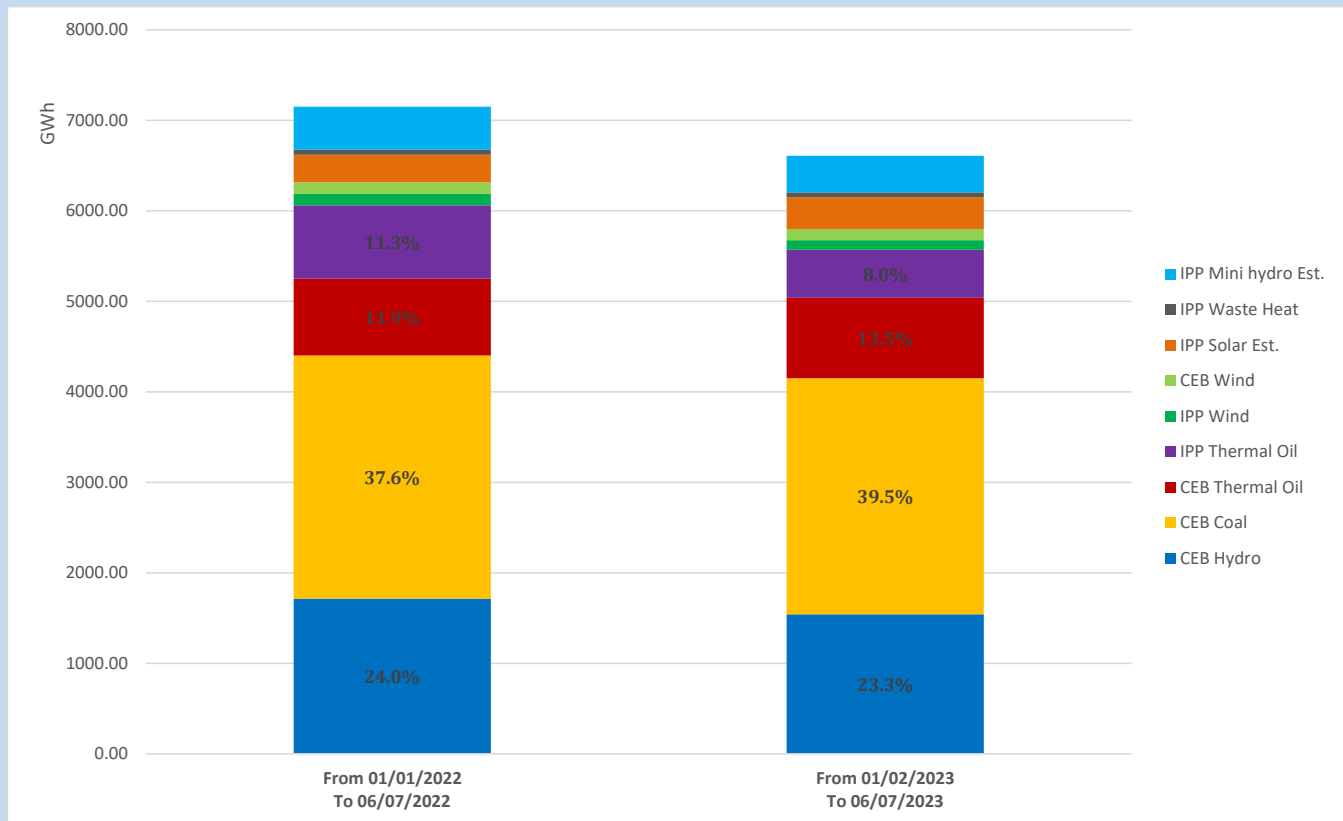
Solar Generation during

June 7, 2023

Based on Telemetered Power Stations only



Cumulative Dispatch Comparison with Last Year



The above figures are including contribution from roof top solar, non telemetered solar and mini hydro plants

Thermal Plant Fuel types

Power Station	Primary Fuel
CEB Thermal	
Sapugaskanda 1	Heavy Fuel
Sapugaskanda 2	Heavy Fuel
Kelanitissa Small Gas Turbines	Auto Diesel
GT 7 - Kelanitissa	Auto Diesel
Kelanitissa CCY	Naphtha or Diesel
Lakvijaya 1	Coal
Lakvijaya 2	Coal
Lakvijaya 3	Coal
Uthuru Janani	Heavy Fuel
Barge CEB	Heavy Fuel
KCCPS -2	Auto Diesel

Power Station	Primary Fuel
Private Thermal	
West Coast	Auto Diesel / Heavy Fuel

Major Incidents reported during the day

June 7, 2023

Nil