

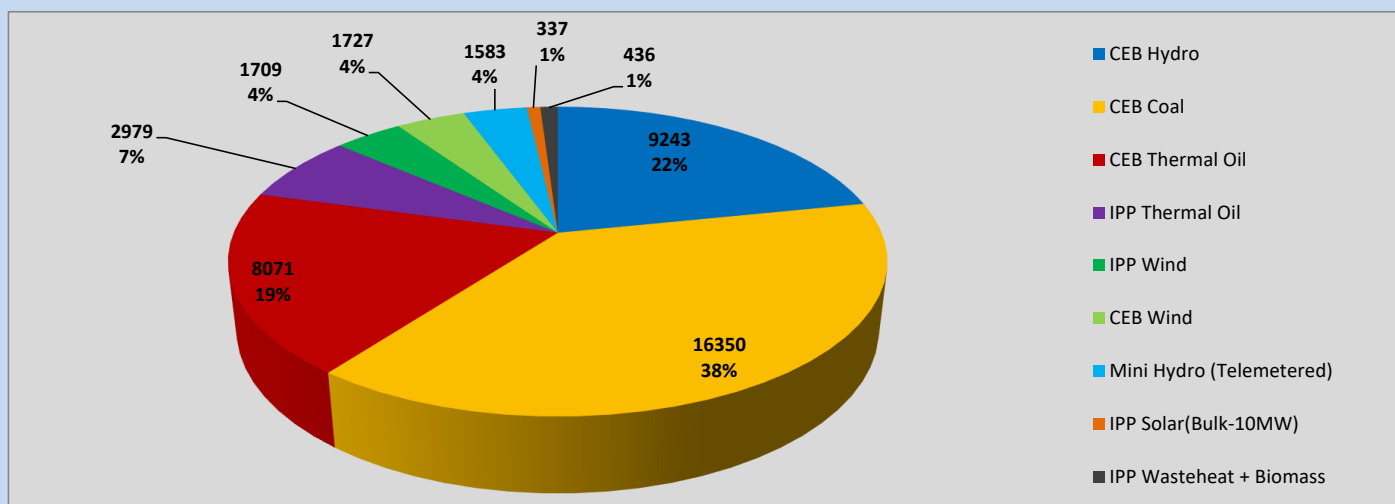
Generation and Reservoirs Statistics

June 6, 2023



PUBLIC UTILITIES COMMISSION OF SRI LANKA

Daily Generation Mix in MWh



Total Generation (Excluding estimated figures) =

42,435 MWh

Estimated figures of CEB generation report

Estimated unserved energy = 0.00 GWh

Estimated Mini Hydro (Non telemetered) = 2497 MWh

Estimated IPP Solar PV (Bulk 1-10MW) = 304 MWh

Estimated Solar Roof Top PV = 1890 MWh

Cumulative Dispatch

Following data excludes the contribution from roof top solar, non telemetered solar and mini hydro plants

For Current Month

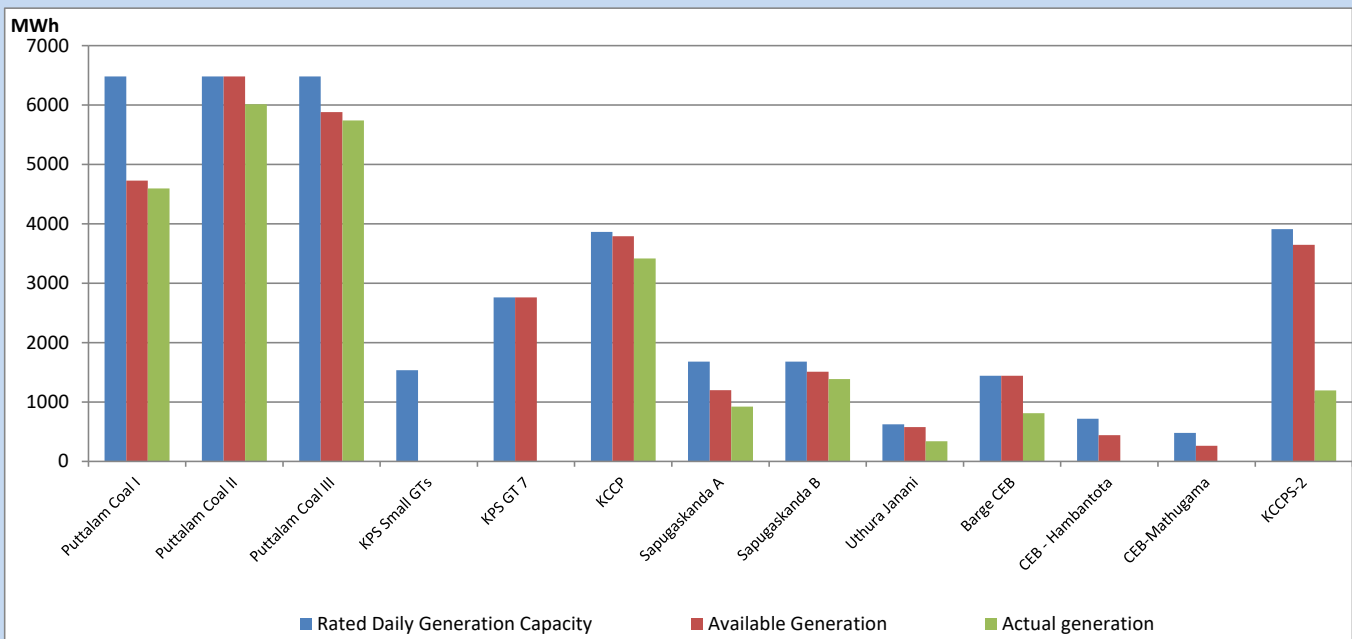
Category	Dispatch (GWh)	
CEB Hydro	55	23.72%
CEB Coal	99	42.39%
CEB Thermal Oil	37	16.04%
IPP Thermal	7	3.08%
SPP Wind	11	4.59%
CEB Wind	11	4.75%
Mini Hydro (Telemetered)	8	3.37%
IPP Solar(Bulk-10MW)	2	0.89%
IPP Wasteheat + BMP	3	1.19%
Total	234	

For Current Year

Category	Dispatch (GWh)	
CEB Hydro	1,536	25.64%
CEB Coal	2,594	43.29%
CEB Thermal Oil	885	14.77%
IPP Thermal	524	8.75%
SPP Wind	101	1.69%
CEB Wind	122	2.04%
Mini Hydro (Telemetered)	134	2.23%
IPP Solar(Bulk-10MW)	45	0.75%
IPP Wasteheat	50	0.83%
Total	5,992	

CEB owned Thermal Plant Dispatch

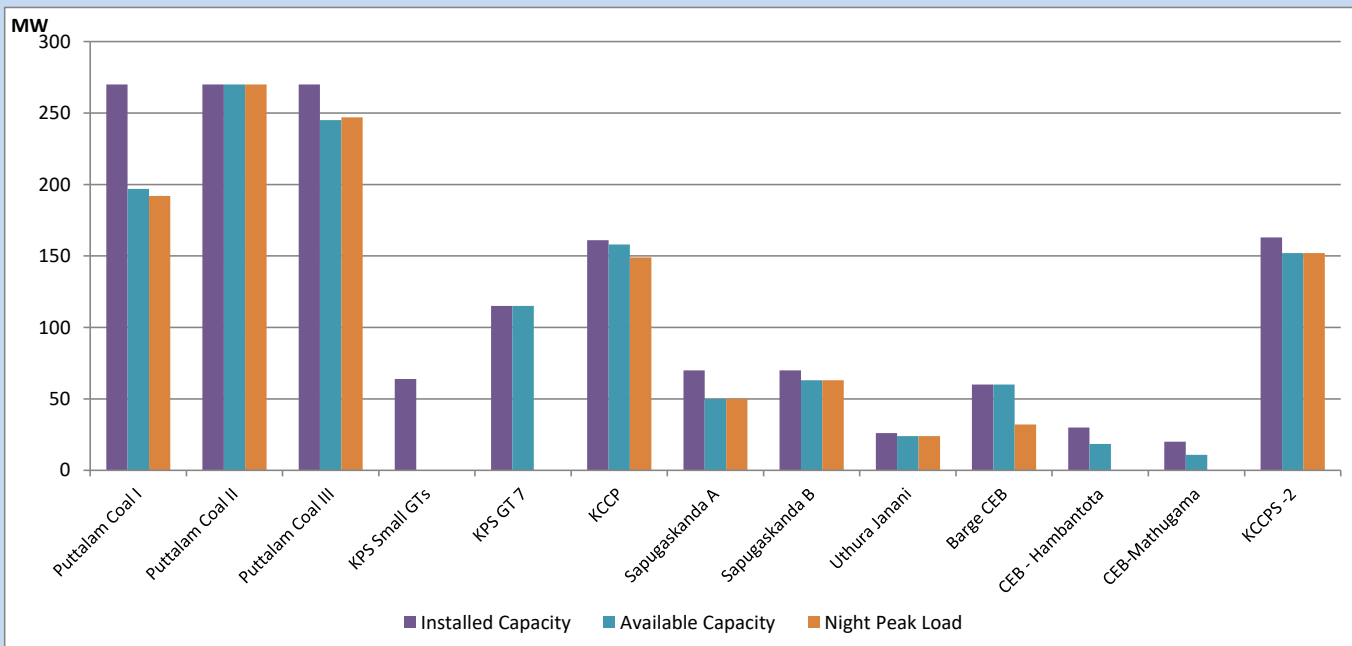
June 6, 2023



Available Generation is estimated based on plant availability at 6.00am on

June 7, 2023

CEB owned Thermal Plant Loading at the Night Peak



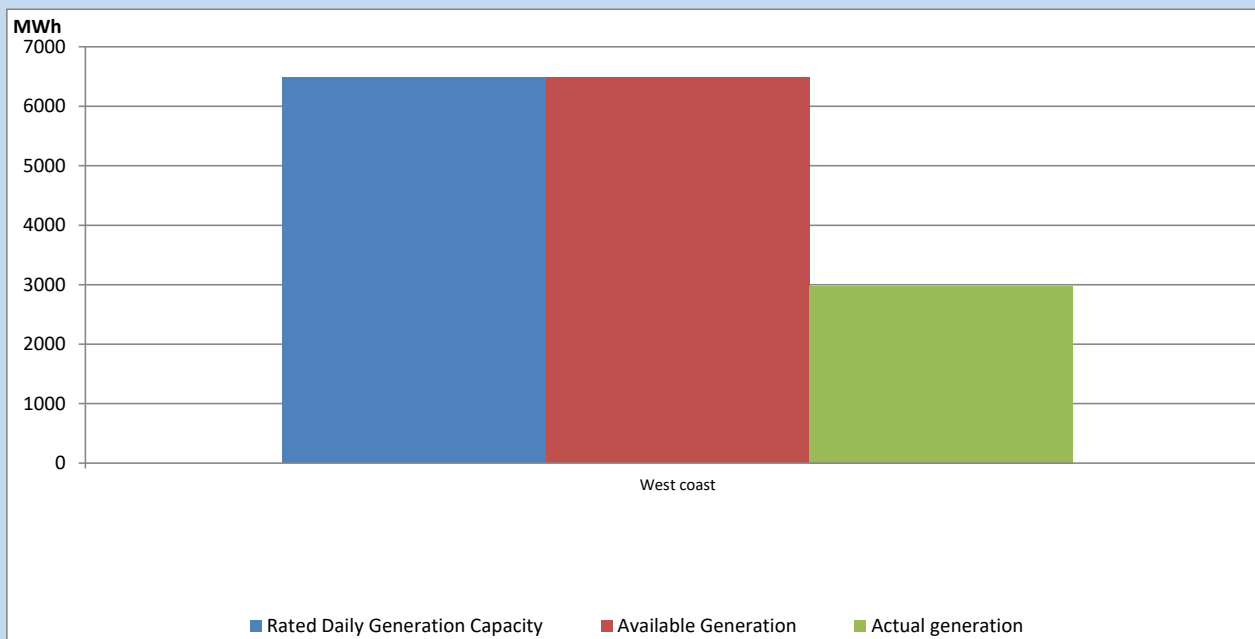
Note-

Plant availability is recorded at 6.00 am on

June 7, 2023

IPP owned Thermal Plant Dispatch

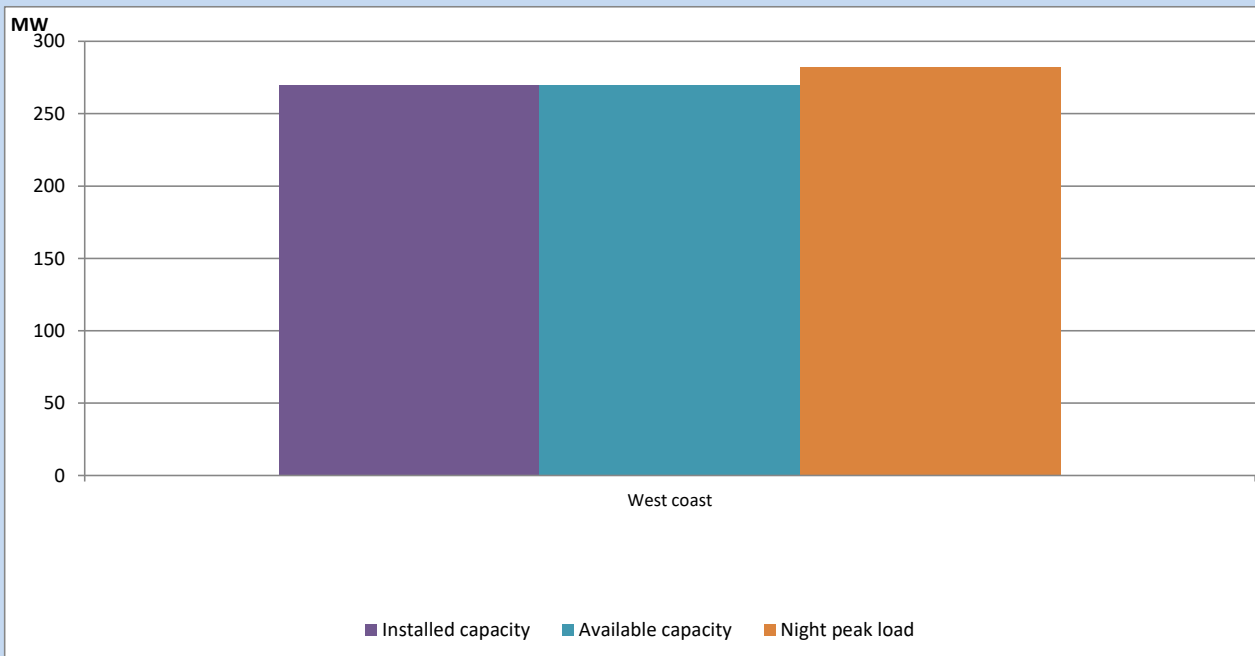
June 6, 2023



Available Generation is estimated based on plant availability at 6.00am on

June 7, 2023

IPP owned Thermal Plant Loading at the Night Peak

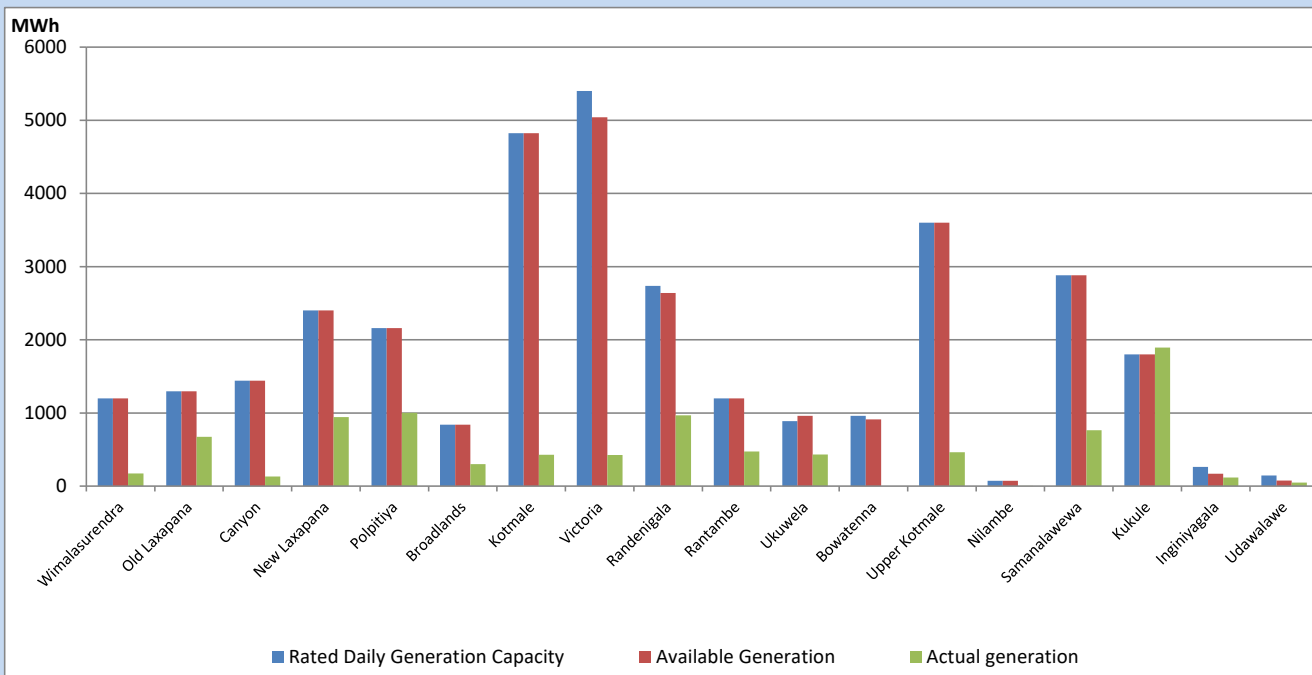


Note- Plant availability is recorded at 6.00 am on

June 7, 2023

Major Hydro Plant Dispatch

June 6, 2023

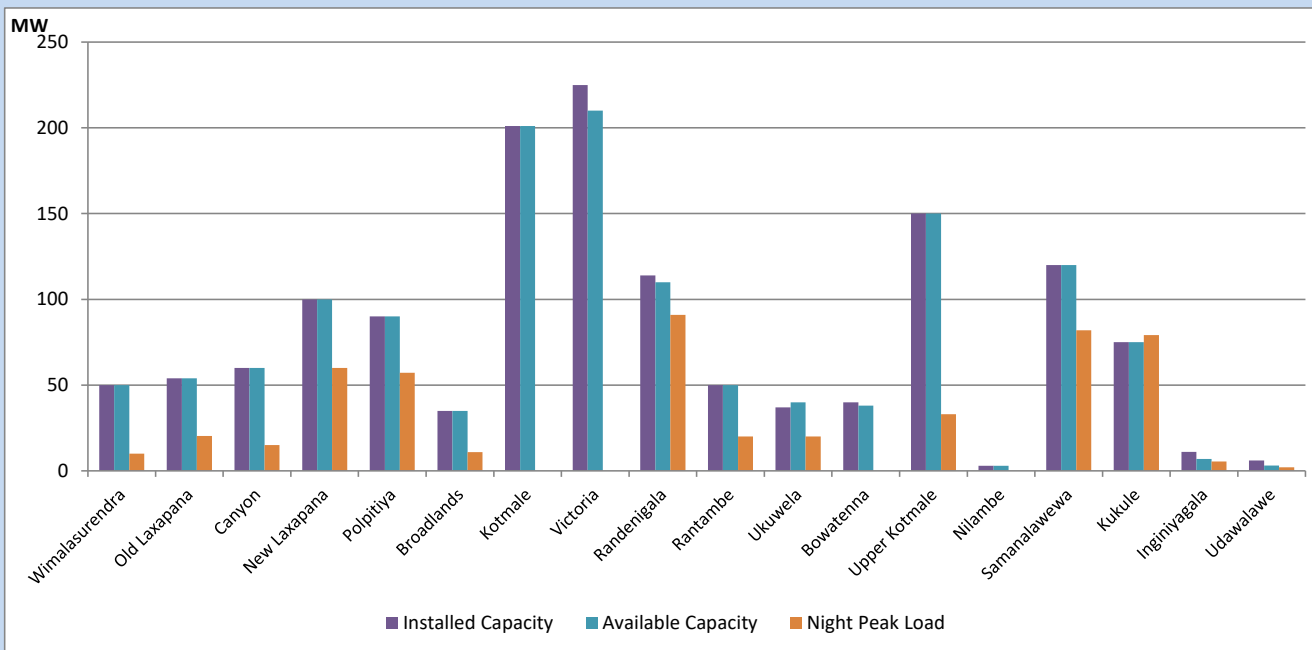


Available Generation is estimated based on plant availability at 6.00am on
Broadlands power plant is operating in the Commissioning Stage

June 7, 2023

Major Hydro Plant Loading at Night Peak

June 6, 2023



Note- Plant availability is recorded at 6.00 am on
Broadlands power plant is operating in the Commissioning Stage

June 7, 2023

Summary of Major Plant performance

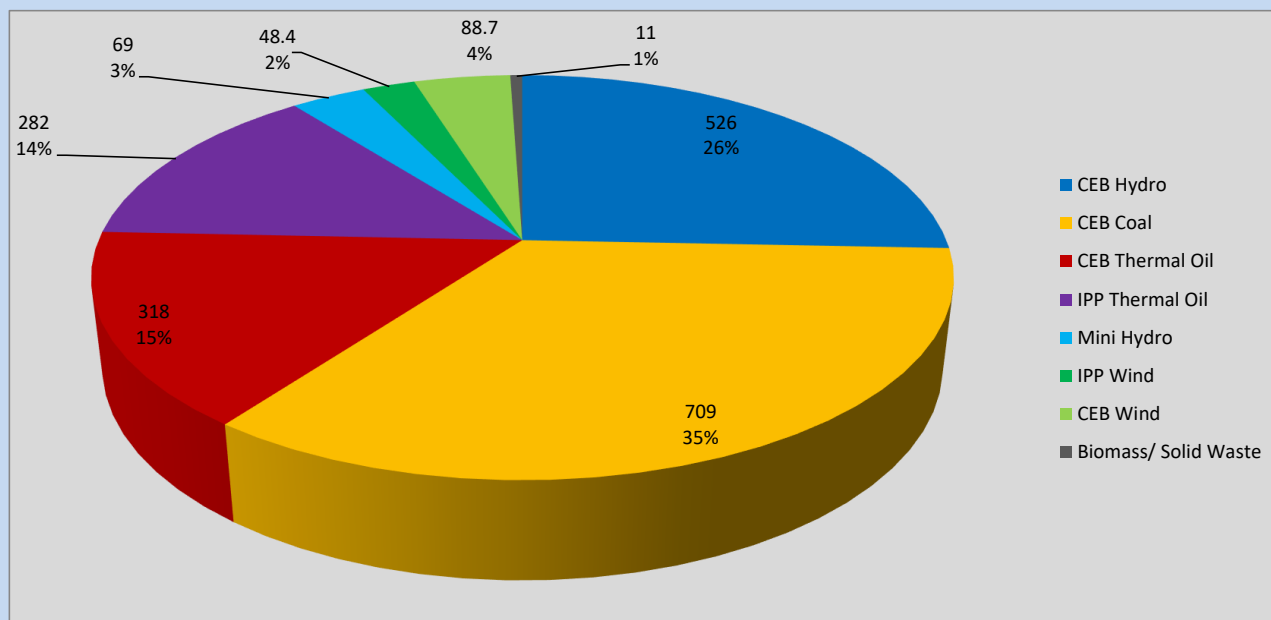
Plant	Installed Capacity	Plant Availability	Night peak Load	Plant Dispatch
	(MW)	(MW)	(MW)	(MWh)
Wimalasurendra	50	50	10	171
Old Laxapana	54	54	20	672
Canyon	60	60	15	132
New Laxapana	100	100	60	943
Polpitiya	90	90	57	1,003
Broadlands	35	35	11	302
Kotmale	201	201	0	430
Victoria	225	210	0	425
Randenigala	114	110	91	968
Rantambe	50	50	20	472
Ukuwela	37	40	20	433
Bowatenna	40	38	0	0
Upper Kotmale	150	150	33	462
Nilambe	3	3	0	4
Samanalawewa	120	120	82	765
Kukule	75	75	79	1,894
Inginiyagala	11	7	5	119
Udawalawe	6	3	2	48
Puttalam Coal I	270	197	192	4,597
Puttalam Coal II	270	270	270	6,014
Puttalam Coal III	270	245	247	5,739
KPS Small GTs	64	0	0	0
KPS GT 7	115	115	0	0
KCCP	161	158	149	3,418
Sapugaskanda A	70	50	50	921
Sapugaskanda B	70	63	63	1,387
Uthura Janani	26	24	24	341
Barge CEB	60	60	32	811
CEB-Hambantota	30	18	0	0
CEB-Mathugama	20	11	0	0
ACE Matara	24	0	0	0
Asia Power	50	0	0	0
KCCPS -2	163	152	152	1,193
West Coast	270	270	282	2,979
Nothern Power	36	0	0	0
ACE Embilipitiya	93	0	0	0
Total	3,483	3,029	2,184	42,435

Plant availability is the availability recorded at 6 am on

June 7, 2023

Contribution to the Night Peak in MW

June 6, 2023

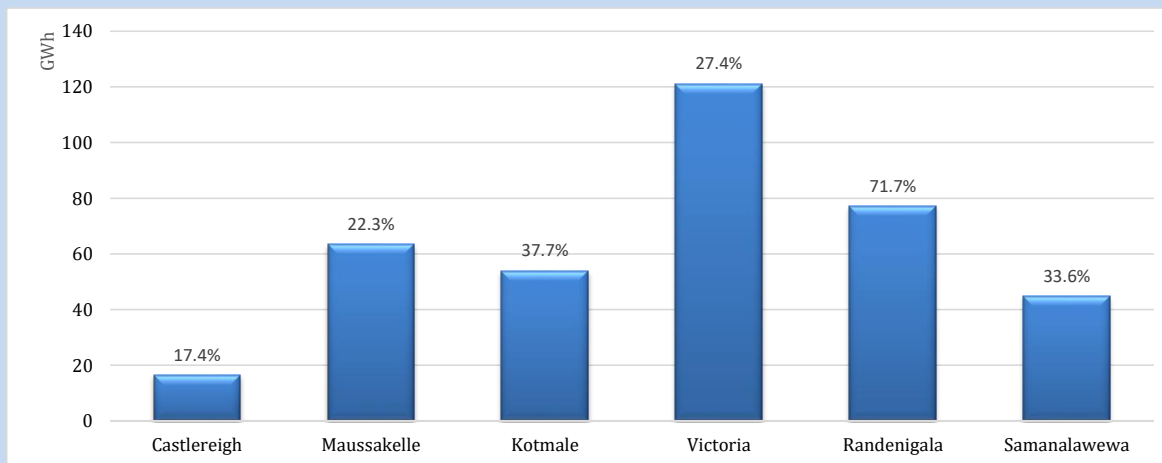


Night Peak*	2,204 MW
Day Peak Maximum Demand	2,016 MW
Day Peak Minimum Demand	1,823 MW
Off Peak Minimum Demand	1,224 MW

Above figures are excluding contribution from roof top solar, non telemetered solar and mini hydro plants

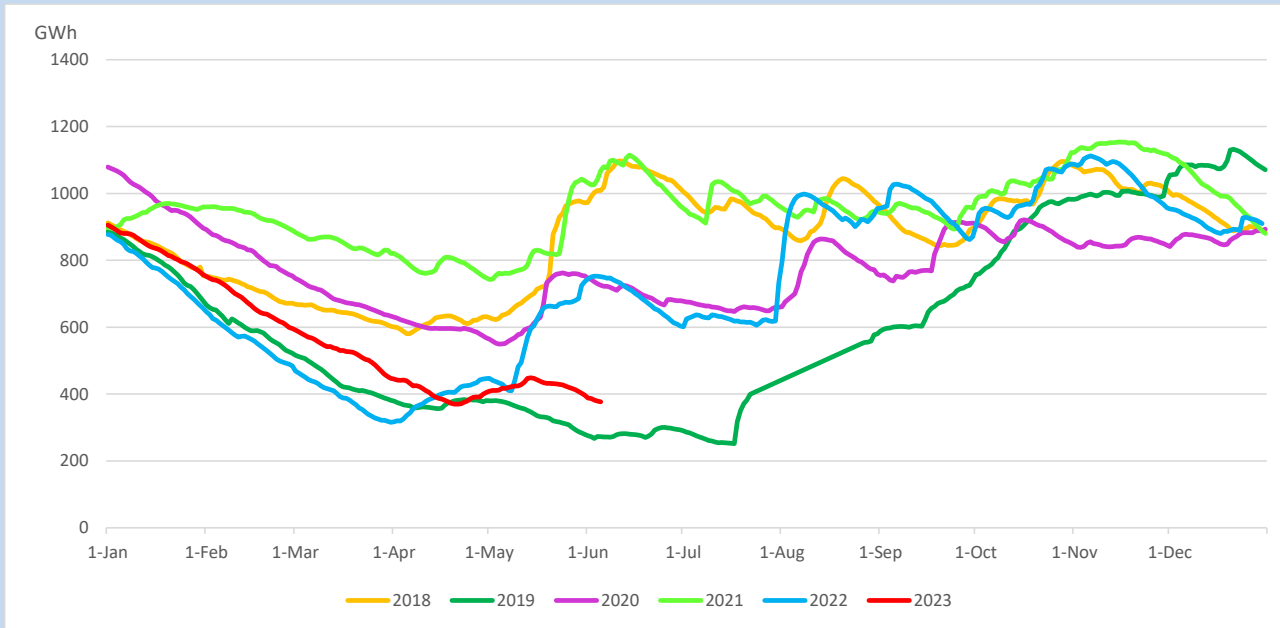
Reservoir Levels -

as at 06.00 Hr on June 7, 2023

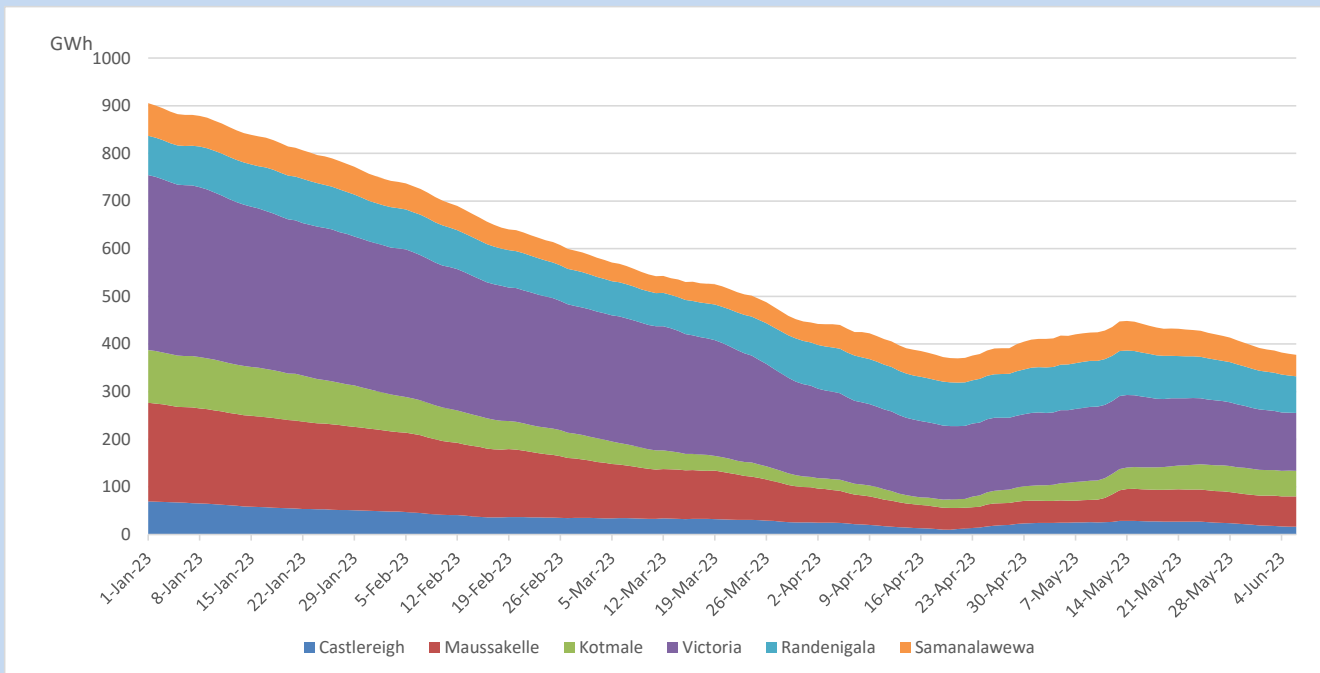


Total Reservoir Level	377.1 GWh
% of Total capacity	31.3%

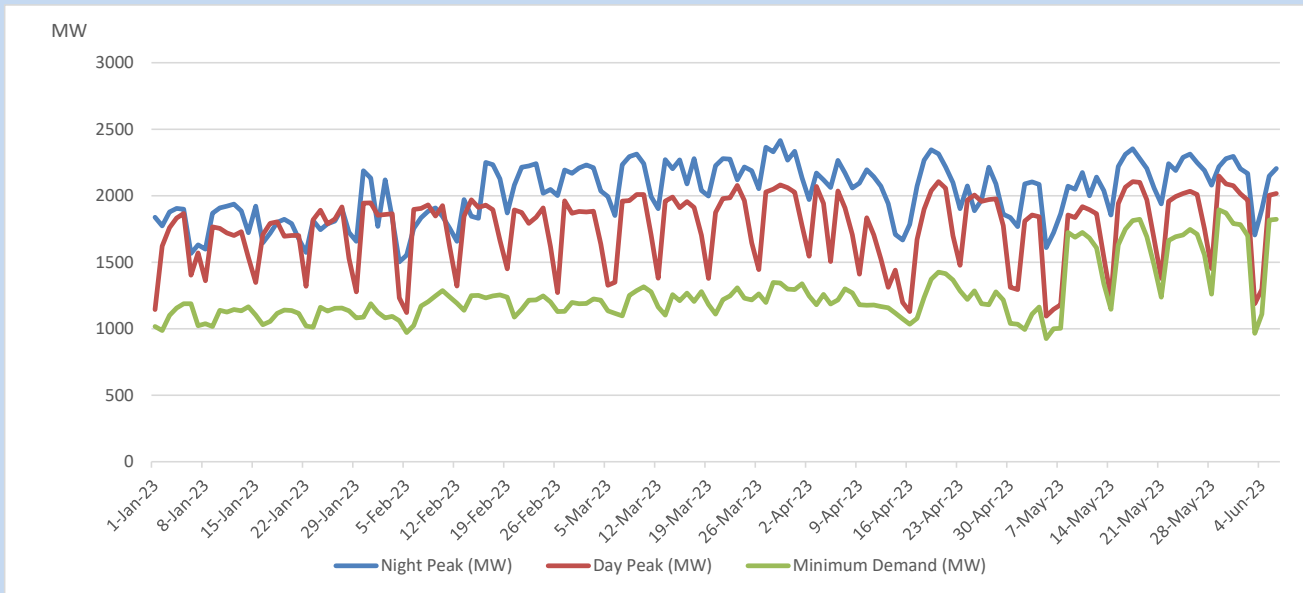
Comparison of Total Reservoir Storage Levels with Past Years



Variation of Major Hydro Reservoir Levels in the current year (GWh)



Variation of Demand during the current year

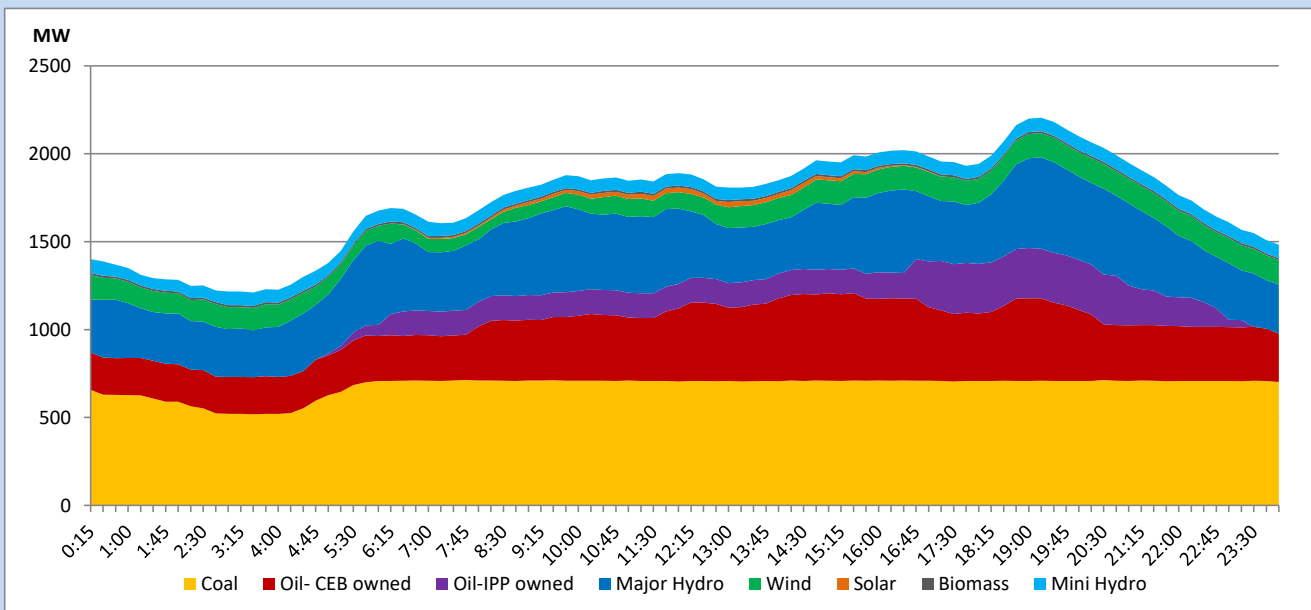


The above figures are excluding contribution from roof top solar, non telemetered solar and mini hydro plants

Daily Load Curve

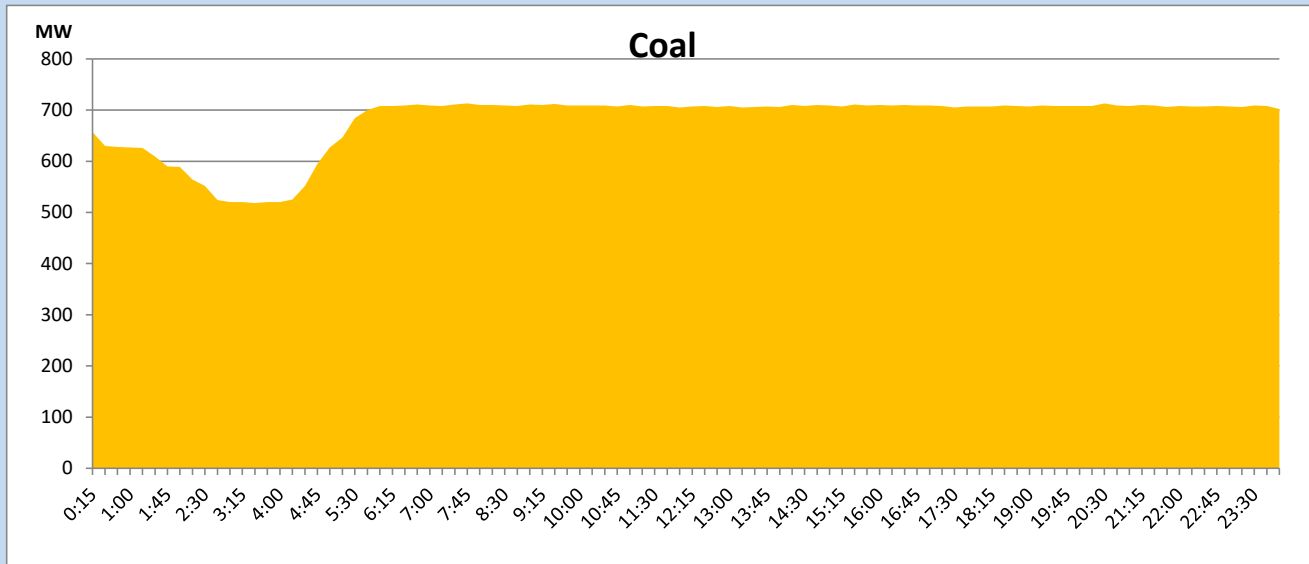
June 6, 2023

Solar and wind data is based on Telemetered Power Stations only



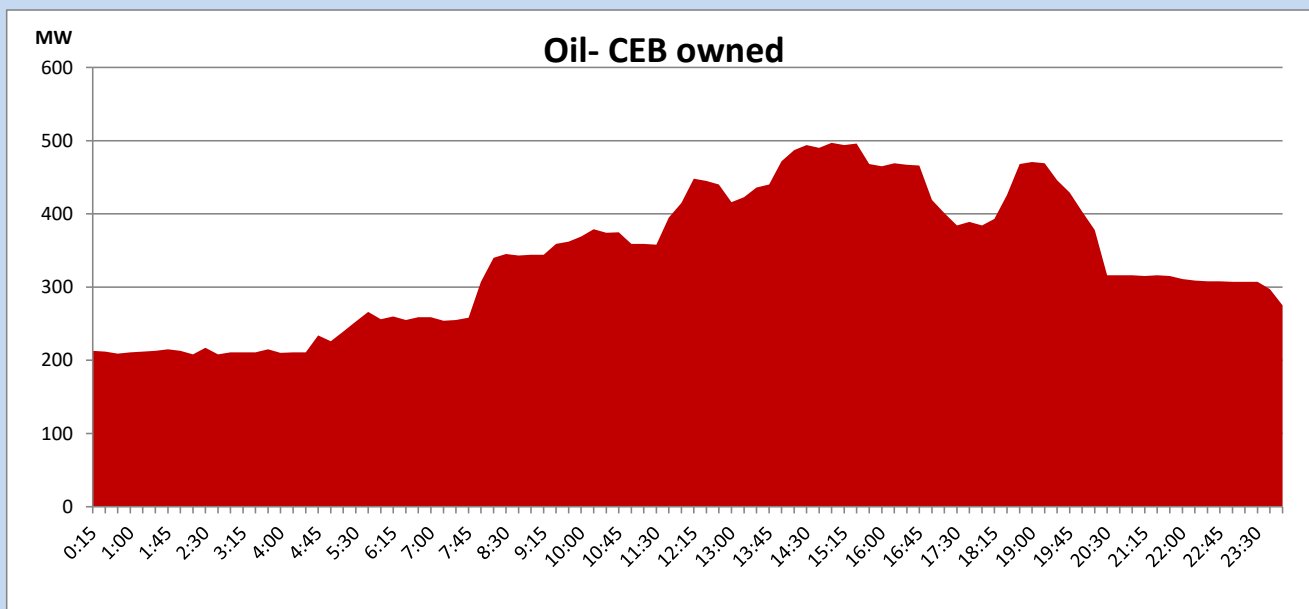
Coal Generation during

June 6, 2023



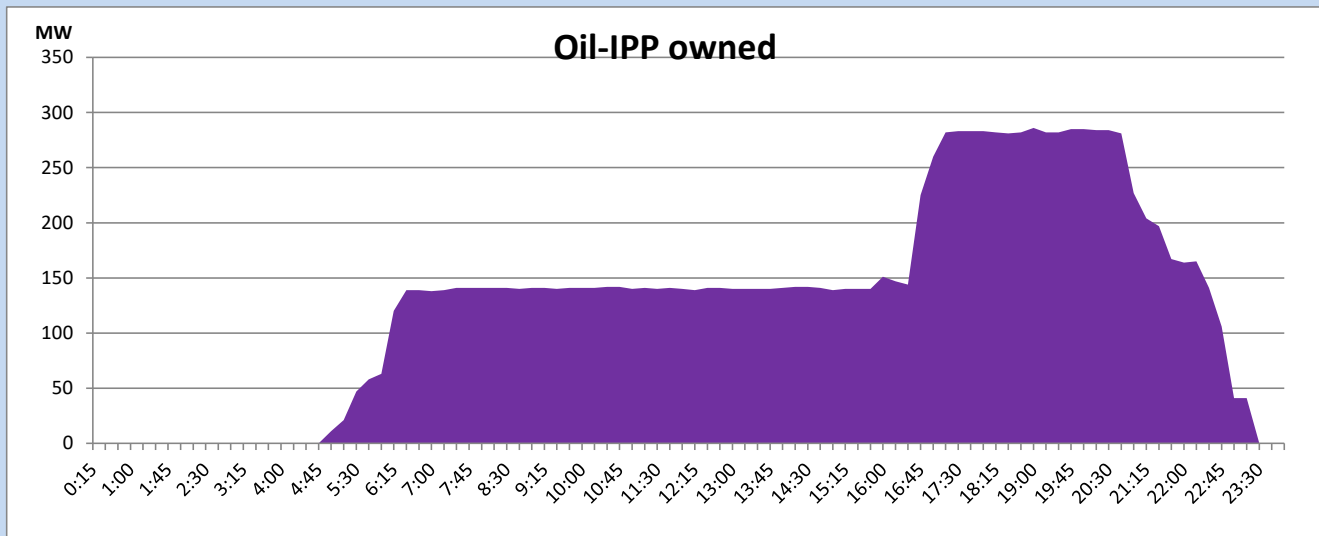
CEB Oil Plant Generation during

June 6, 2023



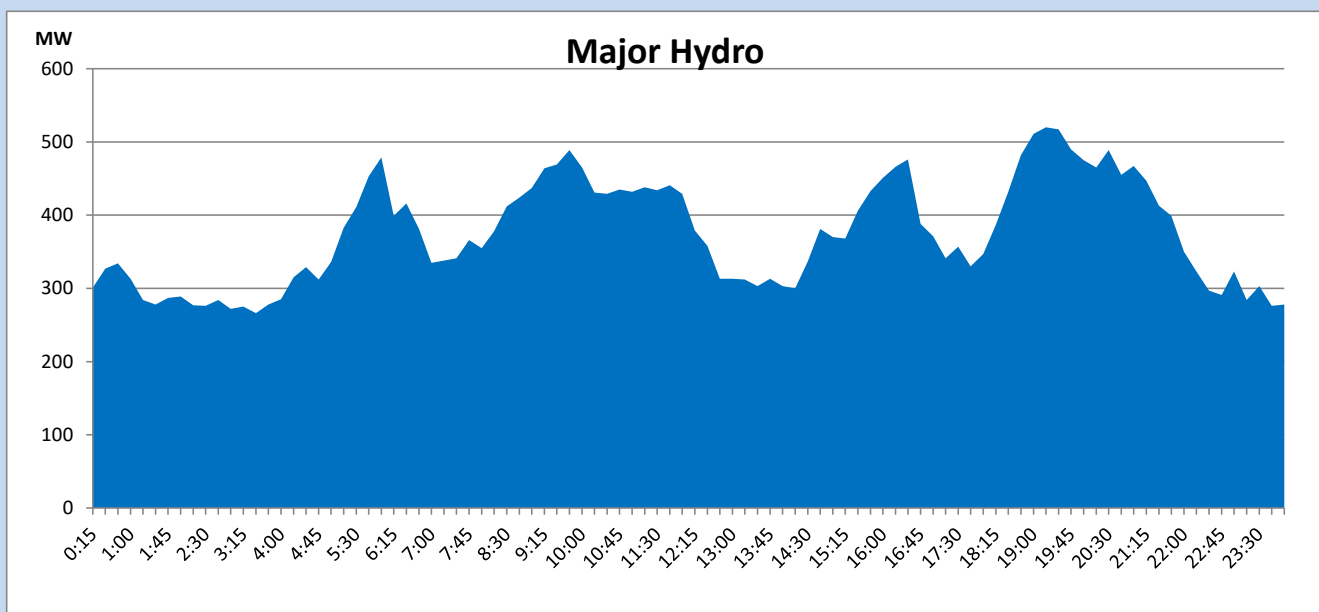
IPP Oil Plant Generation during

June 6, 2023



Major Hydro Generation during

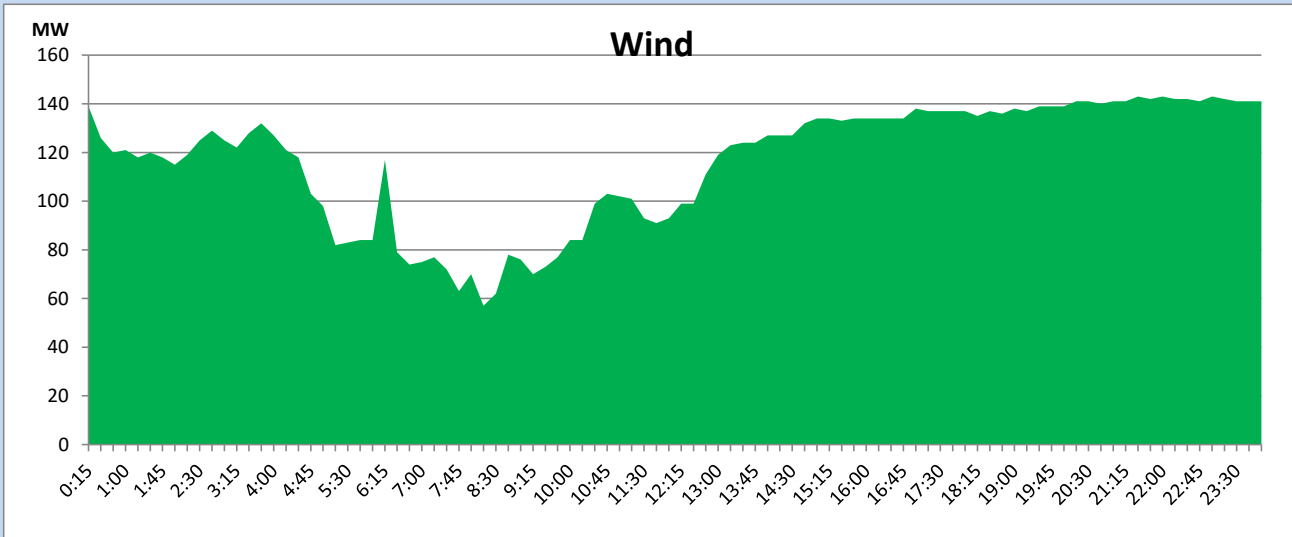
June 6, 2023



Wind Generation during

June 6, 2023

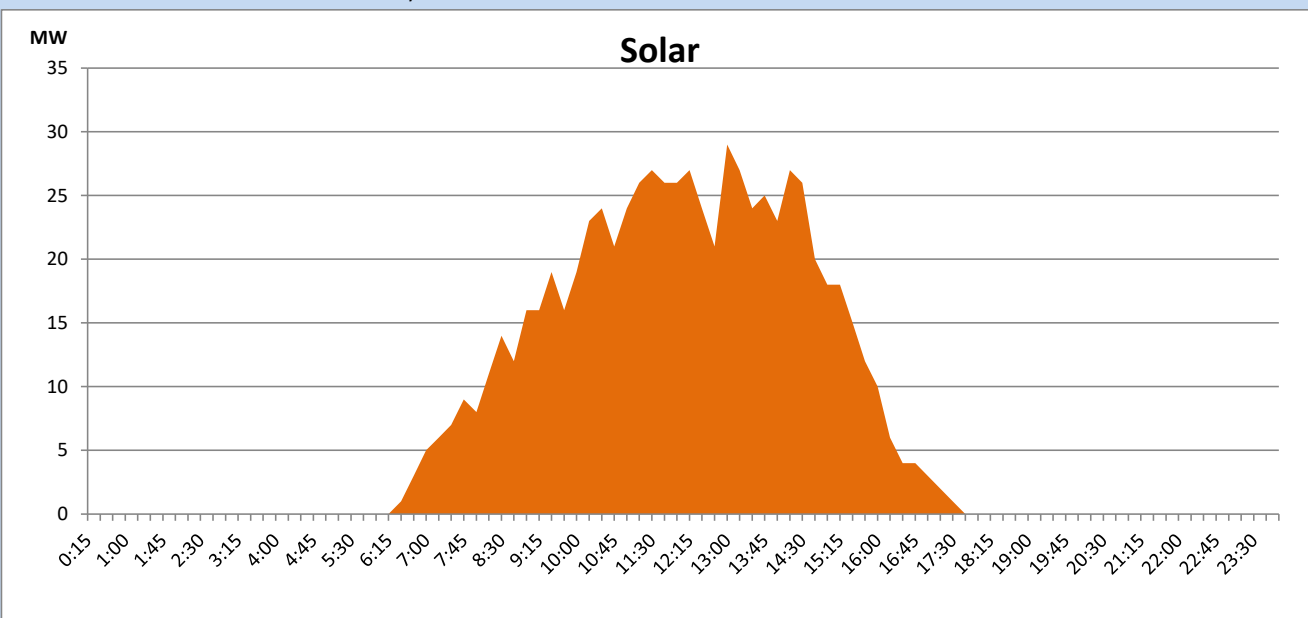
Based on Telemetered Power Stations only



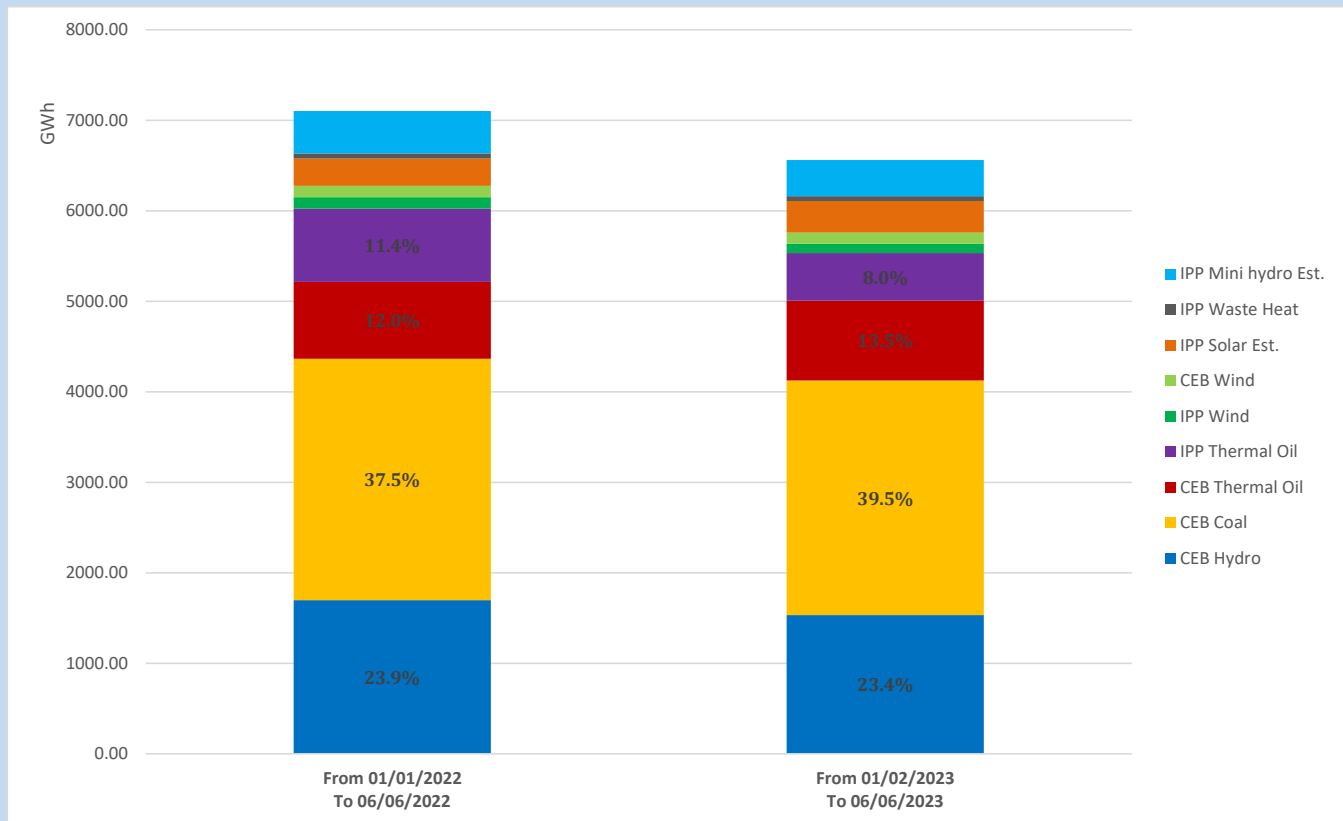
Solar Generation during

June 6, 2023

Based on Telemetered Power Stations only



Cumulative Dispatch Comparison with Last Year



The above figures are including contribution from roof top solar, non telemetered solar and mini hydro plants

Thermal Plant Fuel types

Power Station	Primary Fuel
CEB Thermal	
Sapugaskanda 1	Heavy Fuel
Sapugaskanda 2	Heavy Fuel
Kelanitissa Small Gas Turbines	Auto Diesel
GT 7 - Kelanitissa	Auto Diesel
Kelanitissa CCY	Naphtha or Diesel
Lakvijaya 1	Coal
Lakvijaya 2	Coal
Lakvijaya 3	Coal
Uthuru Janani	Heavy Fuel
Barge CEB	Heavy Fuel
KCCPS -2	Auto Diesel

Power Station	Primary Fuel
Private Thermal	
West Coast	Auto Diesel / Heavy Fuel

Major Incidents reported during the day

June 6, 2023

- 1) Power Barge availability is limited to 30MW from 15:50hrs to 02:27hrs (07.06.2023) due to the cooling system failure.
- 2) Kukule pond spilling stopped at 17:00hrs.
- 3) LVPS Unit 02 de-loaded to 193MW (net) at 01:51hrs (07.06.2023) due to bottom ash scrapper breakdown. The unit reached full load at 05:56hrs (07. 06.2023)