

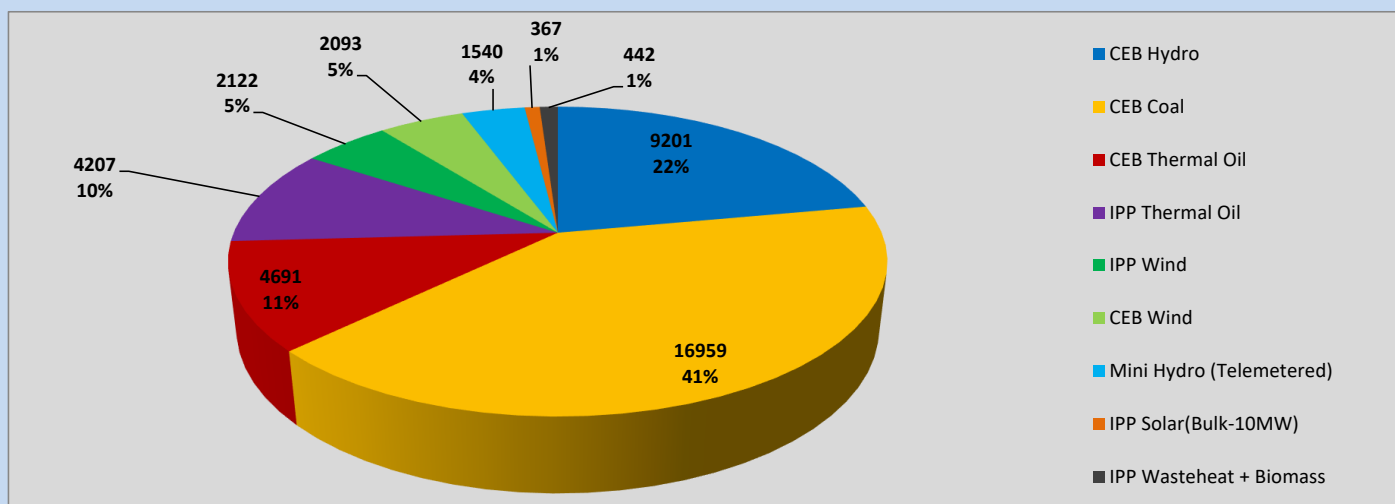
# Generation and Reservoirs Statistics

June 5, 2023



PUBLIC UTILITIES COMMISSION OF SRI LANKA

## Daily Generation Mix in MWh



Total Generation (Excluding estimated figures) =

41,622 MWh

### Estimated figures of CEB generation report

Estimated unserved energy = 0.00 GWh  
 Estimated Mini Hydro (Non telemetered) = 2540 MWh  
 Estimated IPP Solar PV (Bulk 1-10MW) = 304 MWh  
 Estimated Solar Roof Top PV = 1890 MWh

## Cumulative Dispatch

Following data excludes the contribution from roof top solar, non telemetered solar and mini hydro plants

### For Current Month

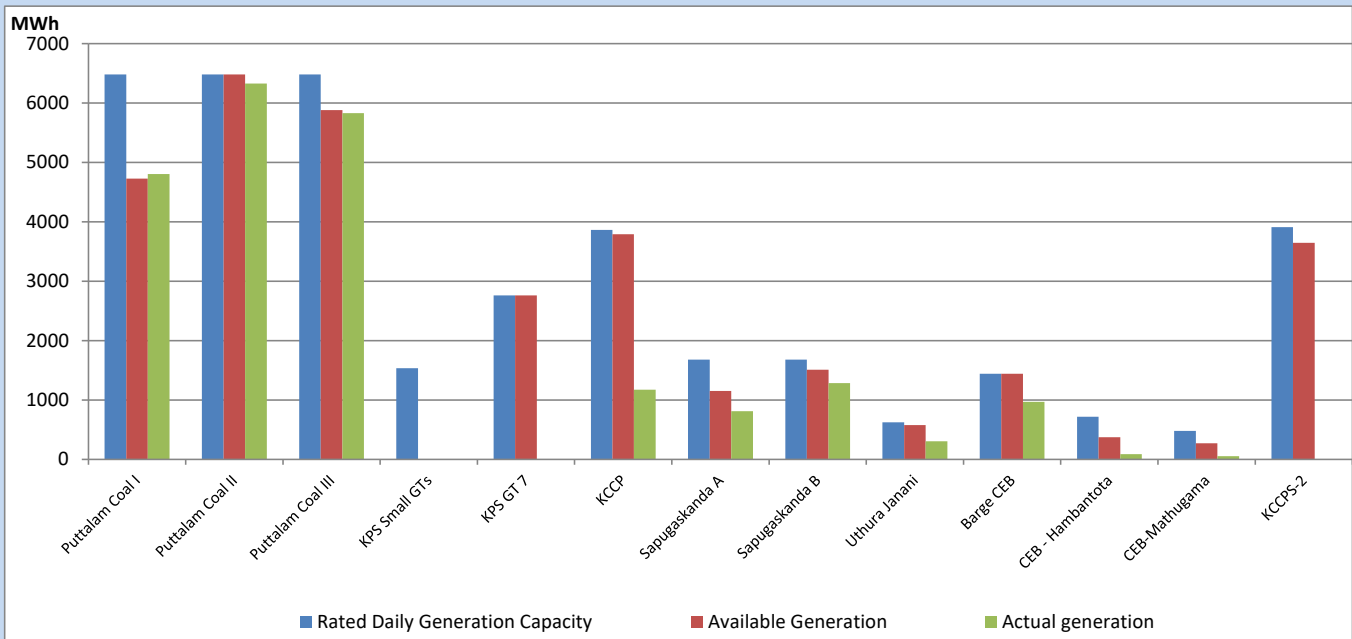
Category	Dispatch (GWh)	
CEB Hydro	46	24.15%
CEB Coal	83	43.24%
CEB Thermal Oil	29	15.38%
IPP Thermal	4	2.20%
SPP Wind	9	4.72%
CEB Wind	9	4.89%
Mini Hydro (Telemetered)	6	3.29%
IPP Solar (Bulk-10MW)	2	0.90%
IPP Wasteheat + BMP	2	1.22%
<b>Total</b>	<b>191</b>	

### For Current Year

Category	Dispatch (GWh)	
CEB Hydro	1,527	25.66%
CEB Coal	2,578	43.33%
CEB Thermal Oil	877	14.74%
IPP Thermal	521	8.76%
SPP Wind	100	1.67%
CEB Wind	121	2.03%
Mini Hydro (Telemetered)	132	2.22%
IPP Solar (Bulk-10MW)	45	0.75%
IPP Wasteheat	49	0.83%
<b>Total</b>	<b>5,949</b>	

## CEB owned Thermal Plant Dispatch

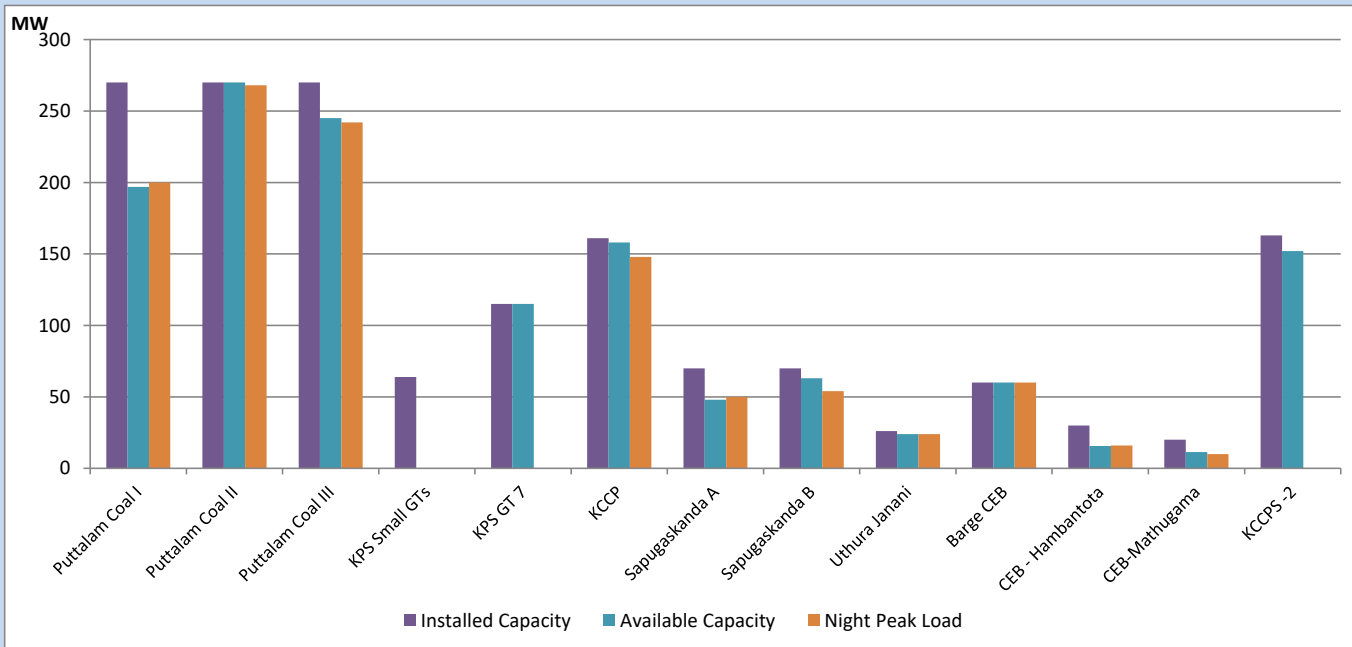
June 5, 2023



Available Generation is estimated based on plant availability at 6.00am on

June 6, 2023

## CEB owned Thermal Plant Loading at the Night Peak



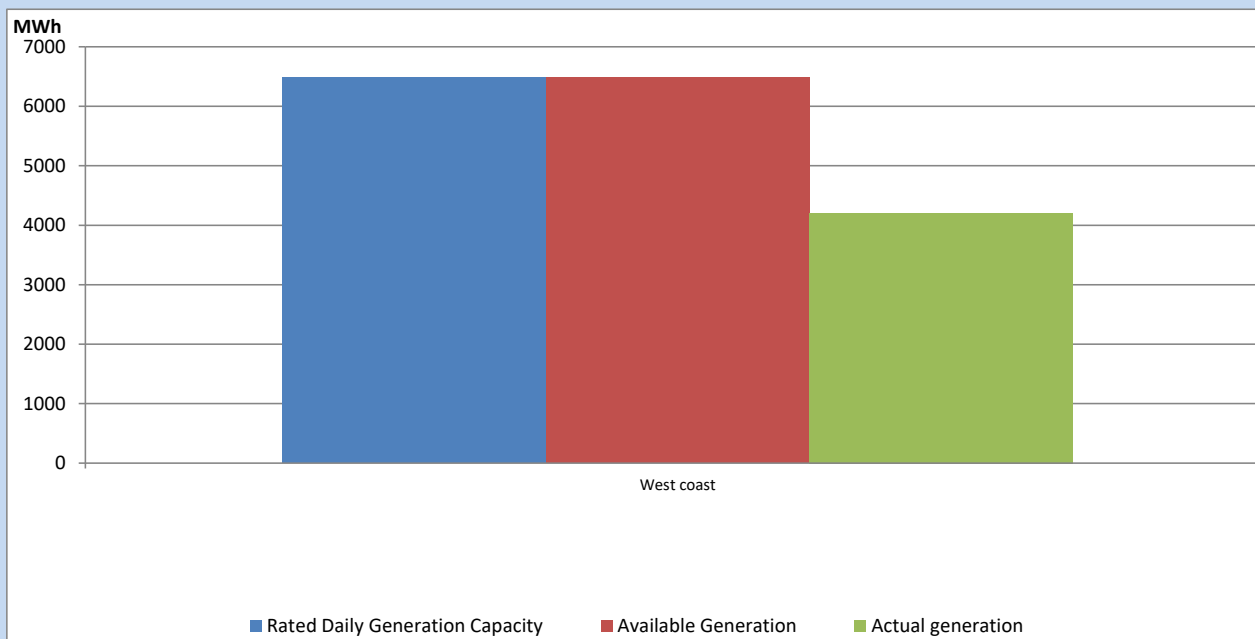
Note-

Plant availability is recorded at 6.00 am on

June 6, 2023

## IPP owned Thermal Plant Dispatch

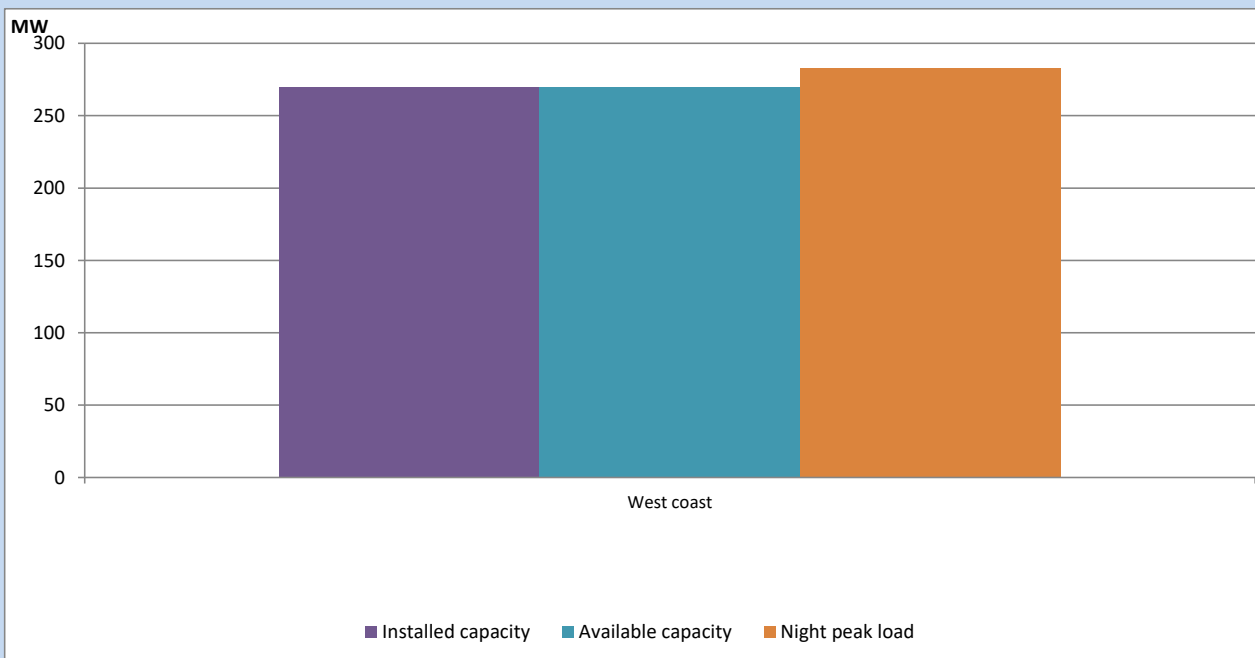
June 5, 2023



Available Generation is estimated based on plant availability at 6.00am on

June 6, 2023

## IPP owned Thermal Plant Loading at the Night Peak

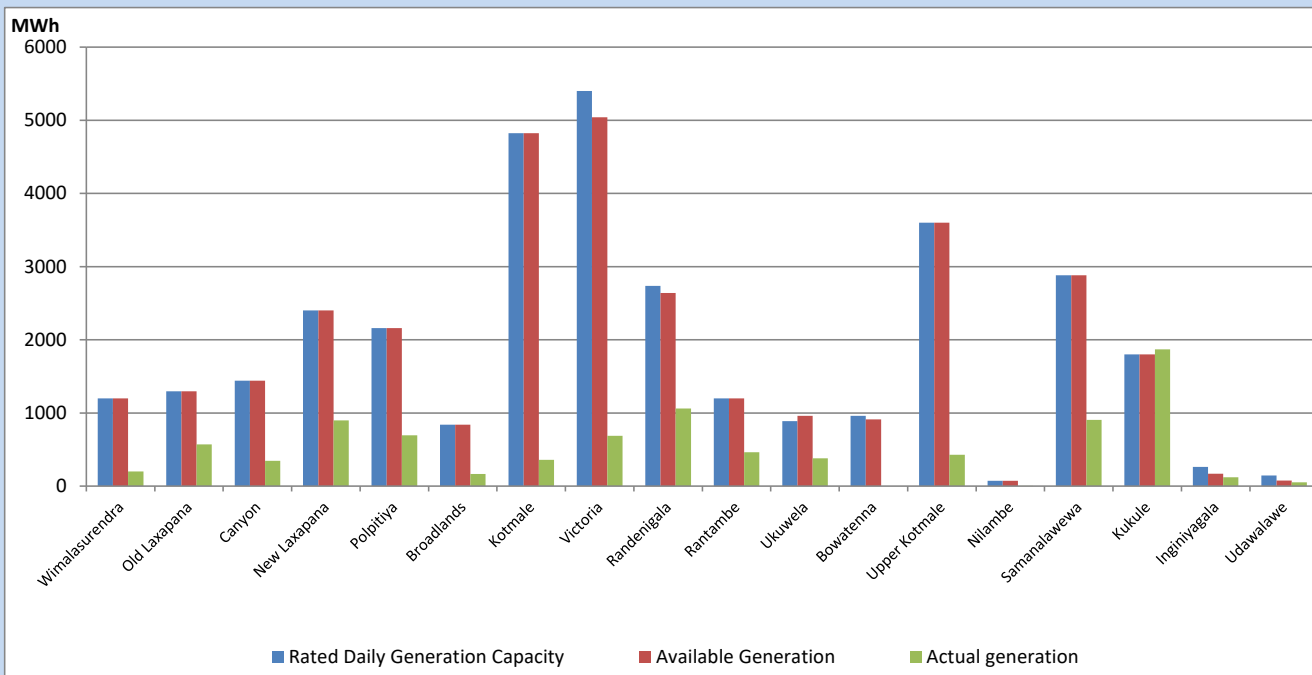


Note- Plant availability is recorded at 6.00 am on

June 6, 2023

## Major Hydro Plant Dispatch

June 5, 2023

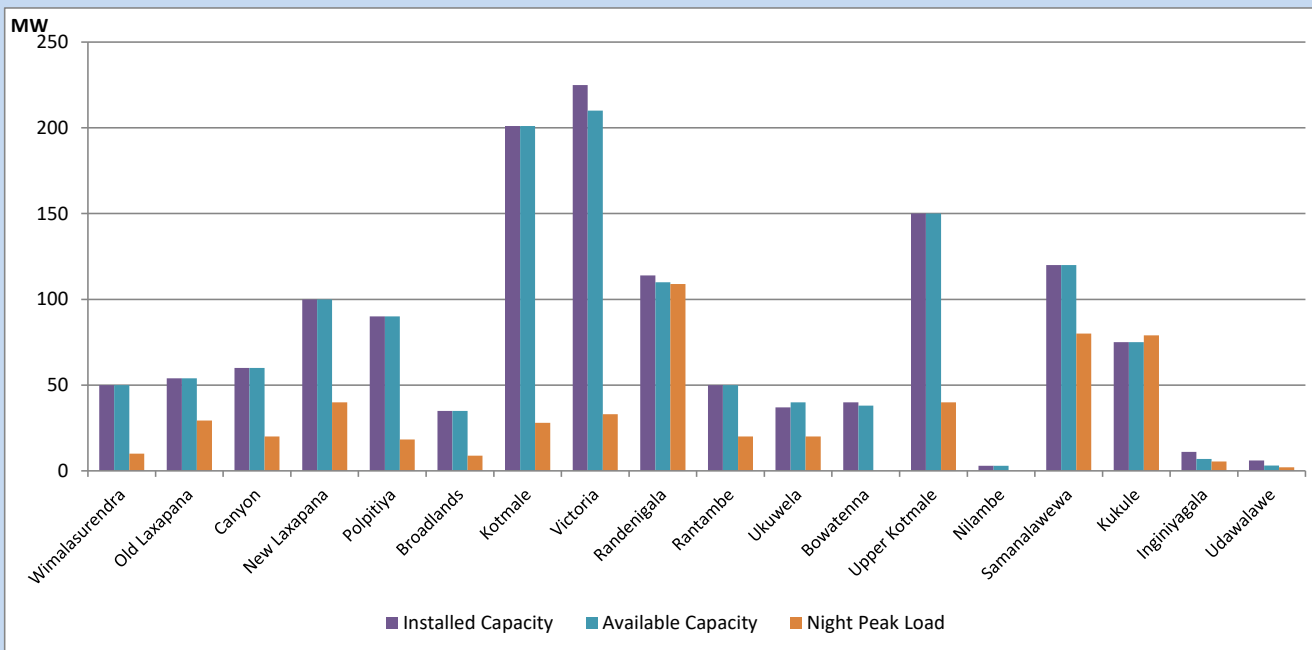


Available Generation is estimated based on plant availability at 6.00am on  
Broadlands power plant is operating in the Commissioning Stage

June 6, 2023

## Major Hydro Plant Loading at Night Peak

June 5, 2023



Note- Plant availability is recorded at 6.00 am on  
Broadlands power plant is operating in the Commissioning Stage

June 6, 2023

## Summary of Major Plant performance

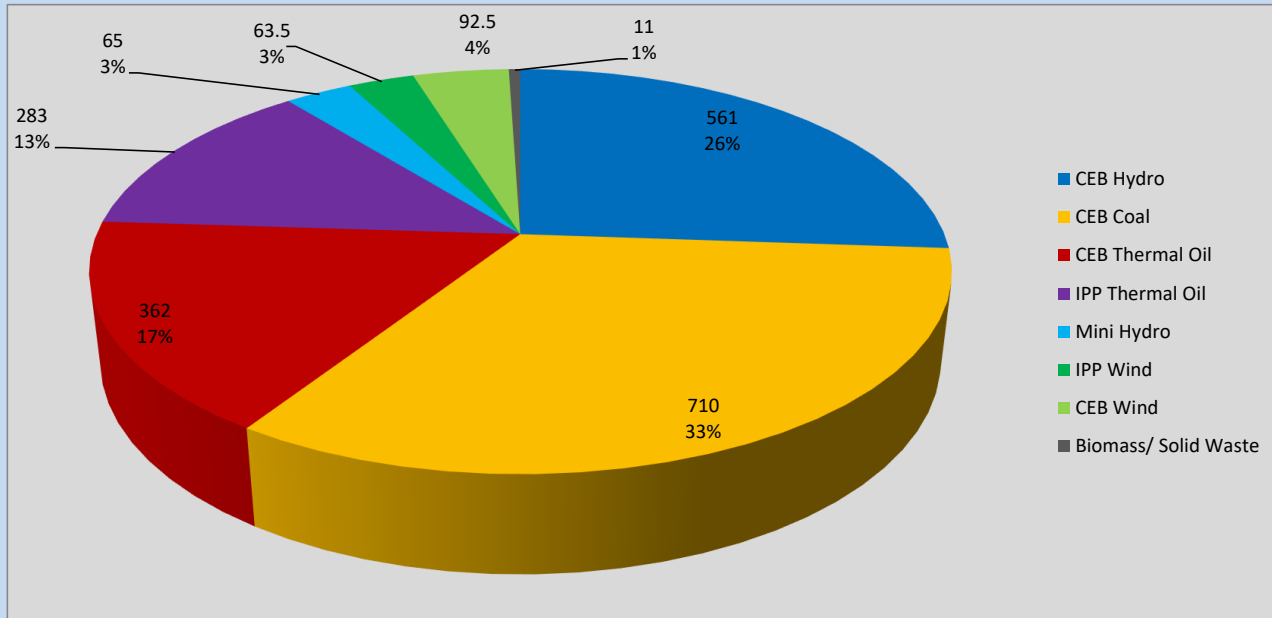
Plant	Installed Capacity	Plant Availability	Night peak Load	Plant Dispatch
	(MW)	(MW)	(MW)	(MWh)
Wimalasurendra	50	50	10	200
Old Laxapana	54	54	29	569
Canyon	60	60	20	344
New Laxapana	100	100	40	897
Polpitiya	90	90	18	694
Broadlands	35	35	9	167
Kotmale	201	201	28	360
Victoria	225	210	33	688
Randenigala	114	110	109	1,062
Rantambe	50	50	20	462
Ukuwela	37	40	20	380
Bowatenna	40	38	0	0
Upper Kotmale	150	150	40	428
Nilambe	3	3	0	5
Samanalawewa	120	120	80	905
Kukule	75	75	79	1,869
Inginiyagala	11	7	5	120
Udawalawe	6	3	2	51
Puttalam Coal I	270	197	200	4,805
Puttalam Coal II	270	270	268	6,326
Puttalam Coal III	270	245	242	5,828
KPS Small GTs	64	0	0	0
KPS GT 7	115	115	0	0
KCCP	161	158	148	1,174
Sapugaskanda A	70	48	50	813
Sapugaskanda B	70	63	54	1,284
Uthura Janani	26	24	24	306
Barge CEB	60	60	60	971
CEB-Hambantota	30	16	16	87
CEB-Mathugama	20	11	10	56
ACE Matara	24	0	0	0
Asia Power	50	0	0	0
KCCPS -2	163	152	0	0
West Coast	270	270	283	4,207
Nothern Power	36	0	0	0
ACE Embilipitiya	93	0	0	0
<b>Total</b>	<b>3,483</b>	<b>3,025</b>	<b>2,130</b>	<b>41,622</b>

Plant availability is the availability recorded at 6 am on

June 6, 2023

## Contribution to the Night Peak in MW

June 5, 2023

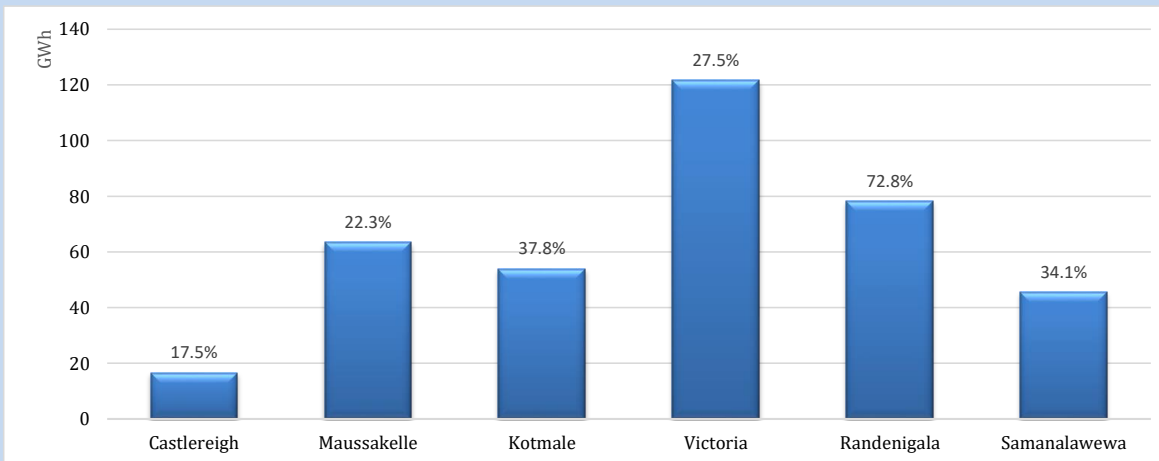


Night Peak*	2,148 MW
Day Peak Maximum Demand	2,004 MW
Day Peak Minimum Demand	1,817 MW
Off Peak Minimum Demand	1,186 MW

Above figures are excluding contribution from roof top solar, non telemetered solar and mini hydro plants

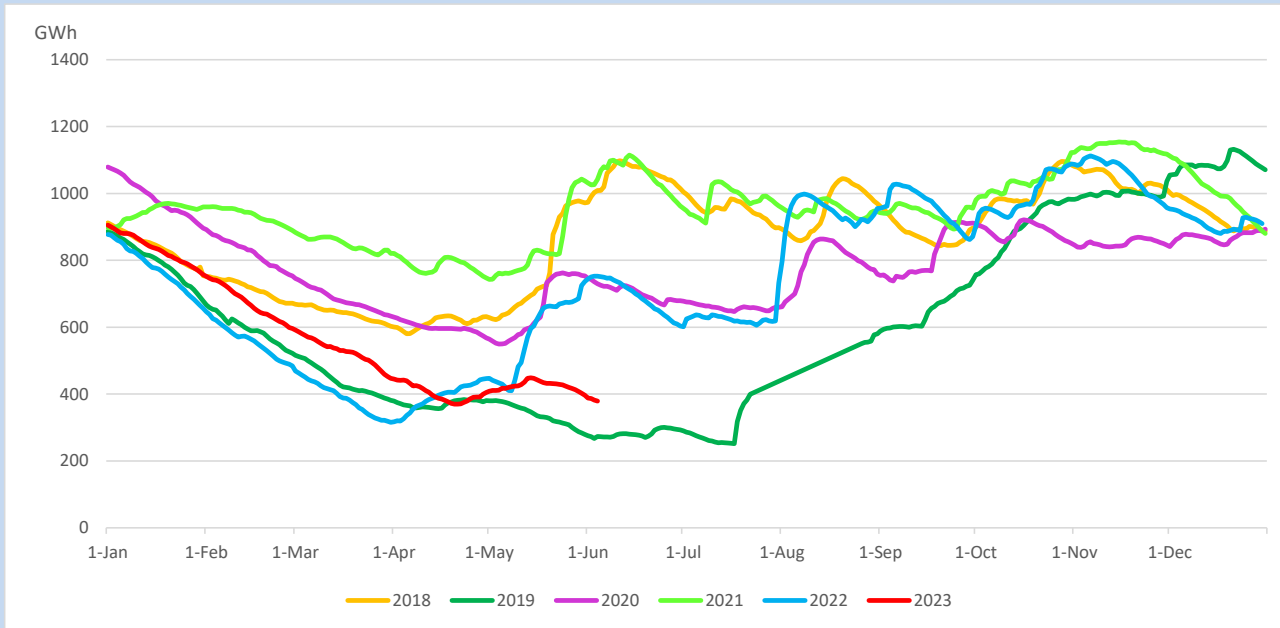
## Reservoir Levels -

as at 06.00 Hr on June 6, 2023

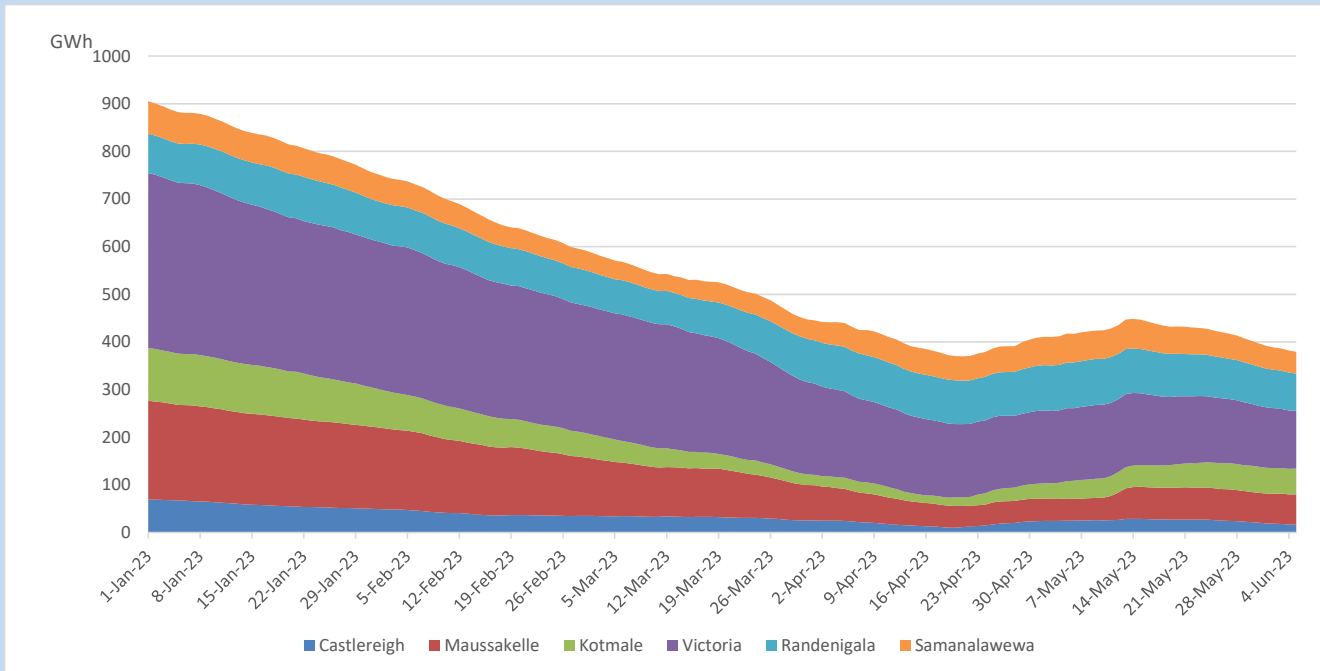


Total Reservoir Level	379.4 GWh
% of Total capacity	31.5%

## Comparison of Total Reservoir Storage Levels with Past Years

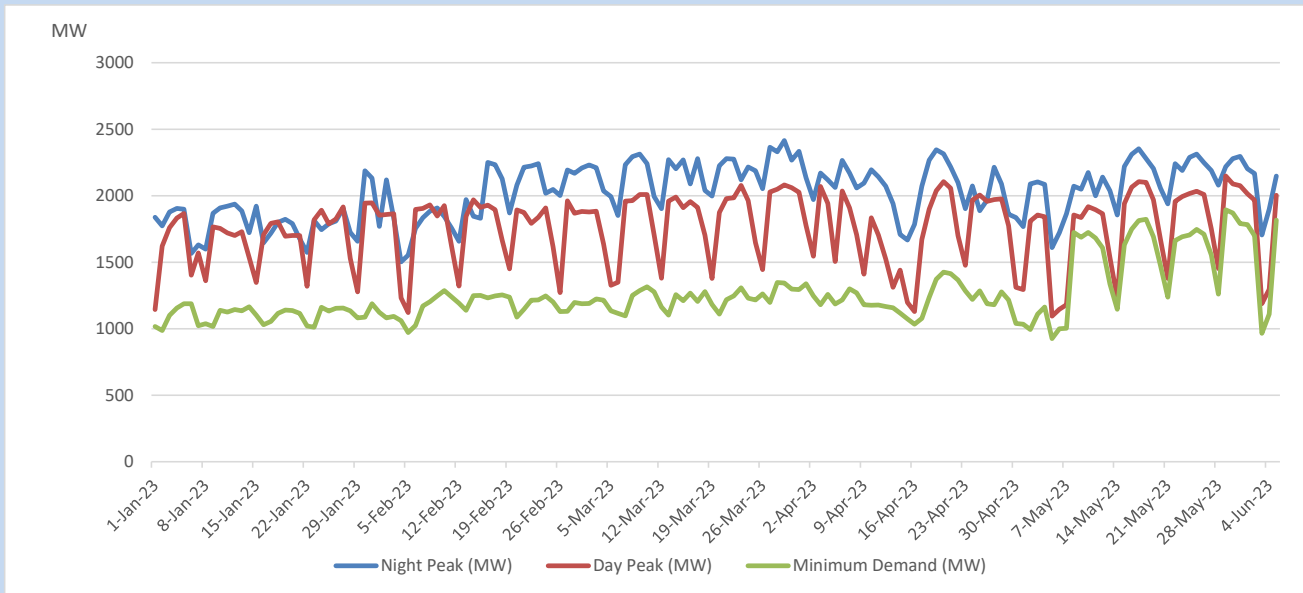


## Variation of Major Hydro Reservoir Levels in the current year (GWh)





## Variation of Demand during the current year

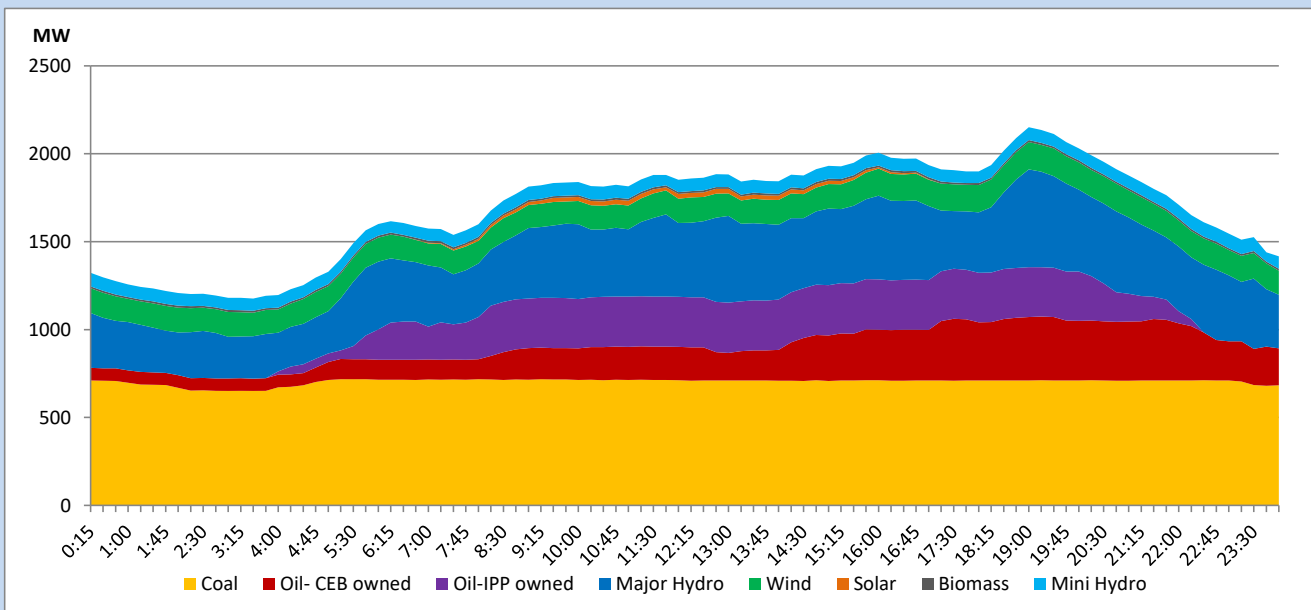


The above figures are excluding contribution from roof top solar, non telemetered solar and mini hydro plants

## Daily Load Curve

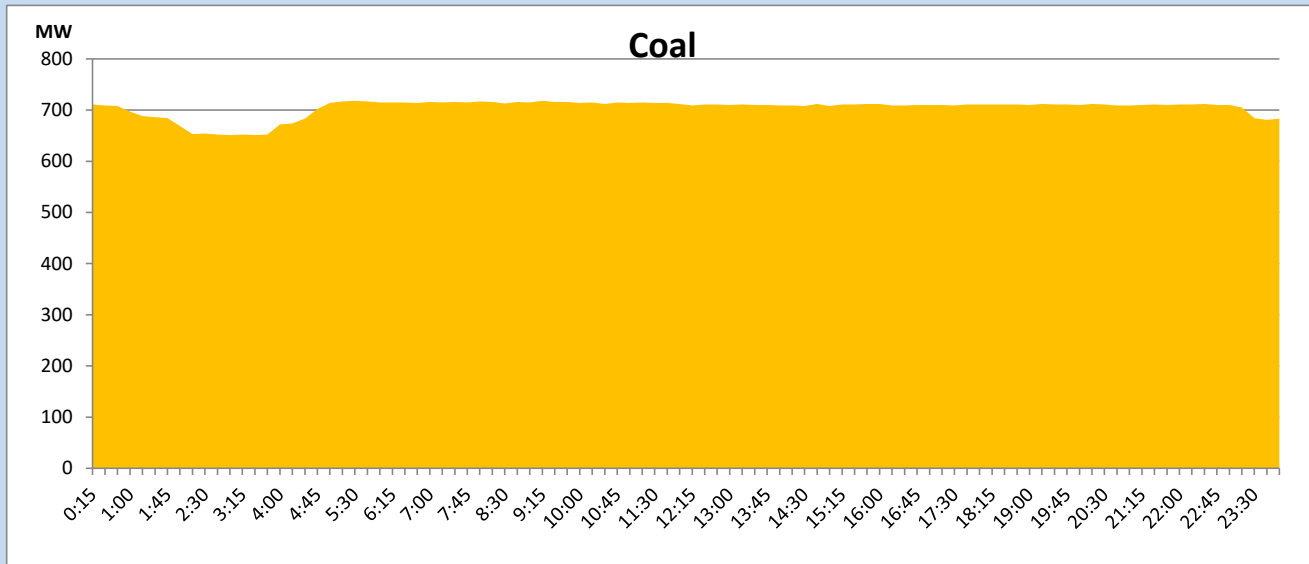
June 5, 2023

Solar and wind data is based on Telemetered Power Stations only



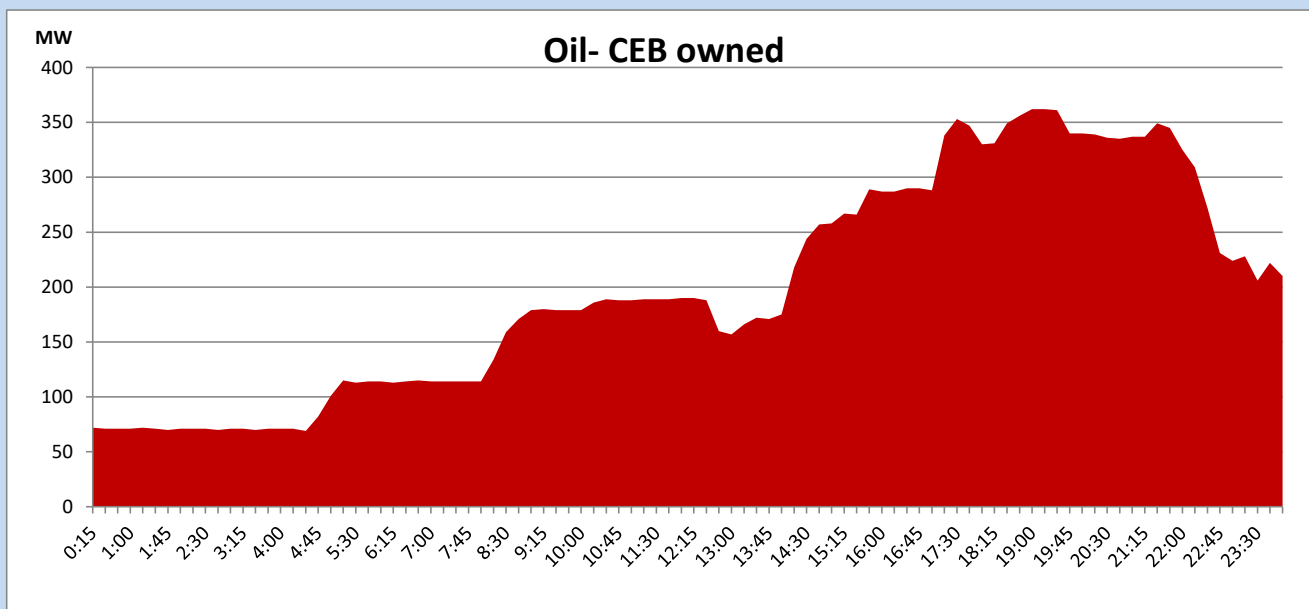
## Coal Generation during

June 5, 2023



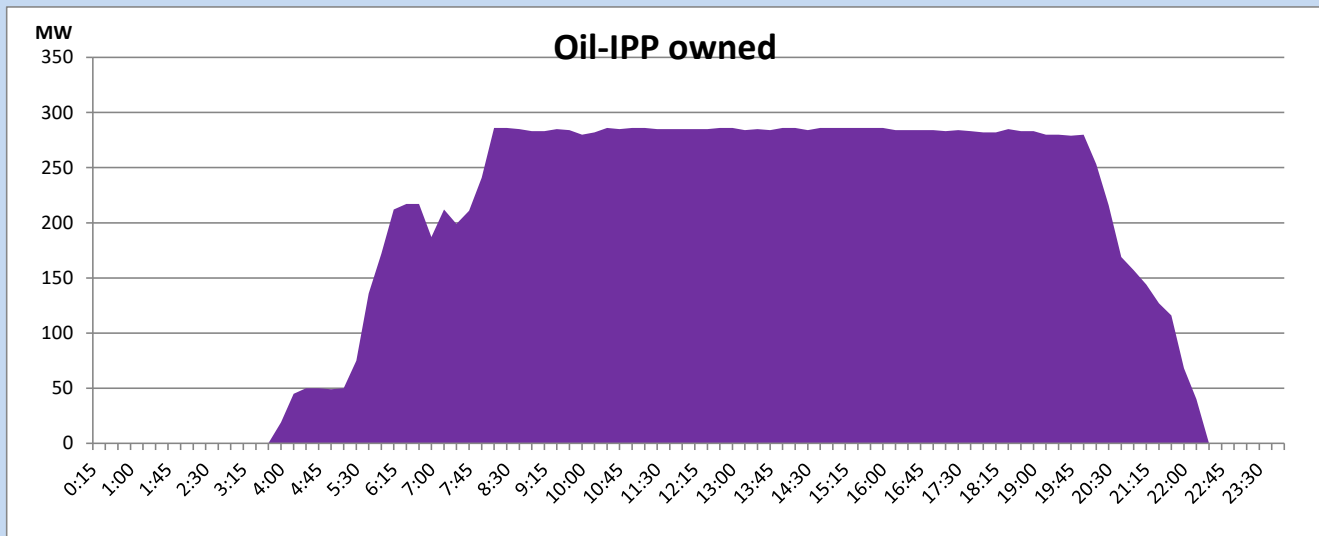
## CEB Oil Plant Generation during

June 5, 2023



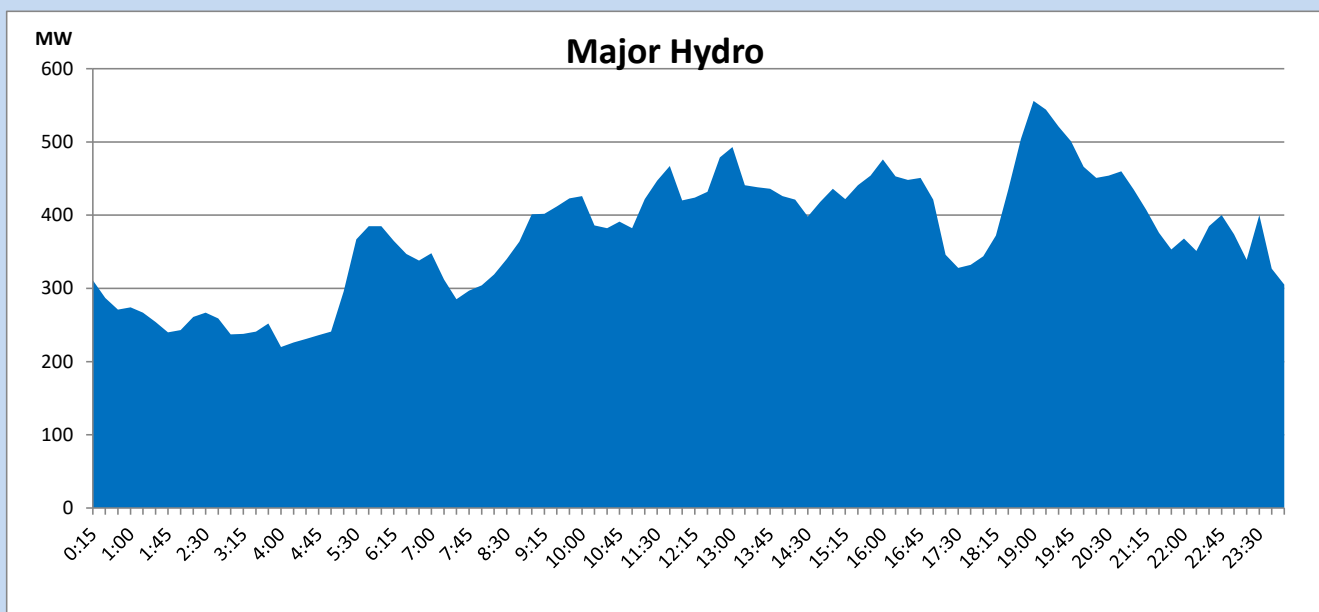
## IPP Oil Plant Generation during

June 5, 2023



## Major Hydro Generation during

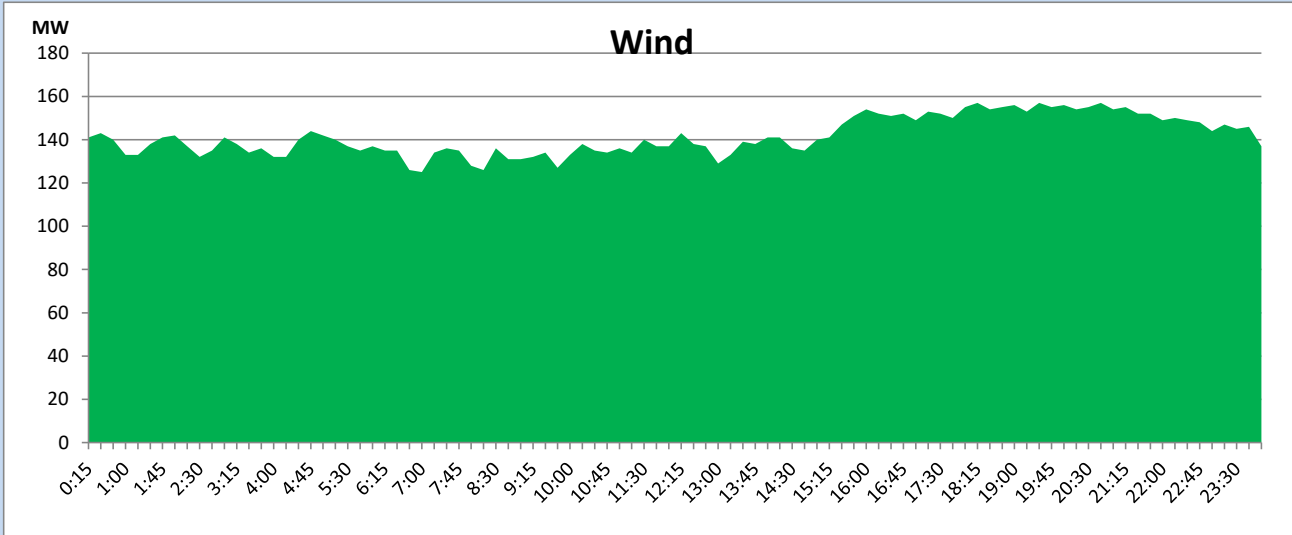
June 5, 2023



## Wind Generation during

June 5, 2023

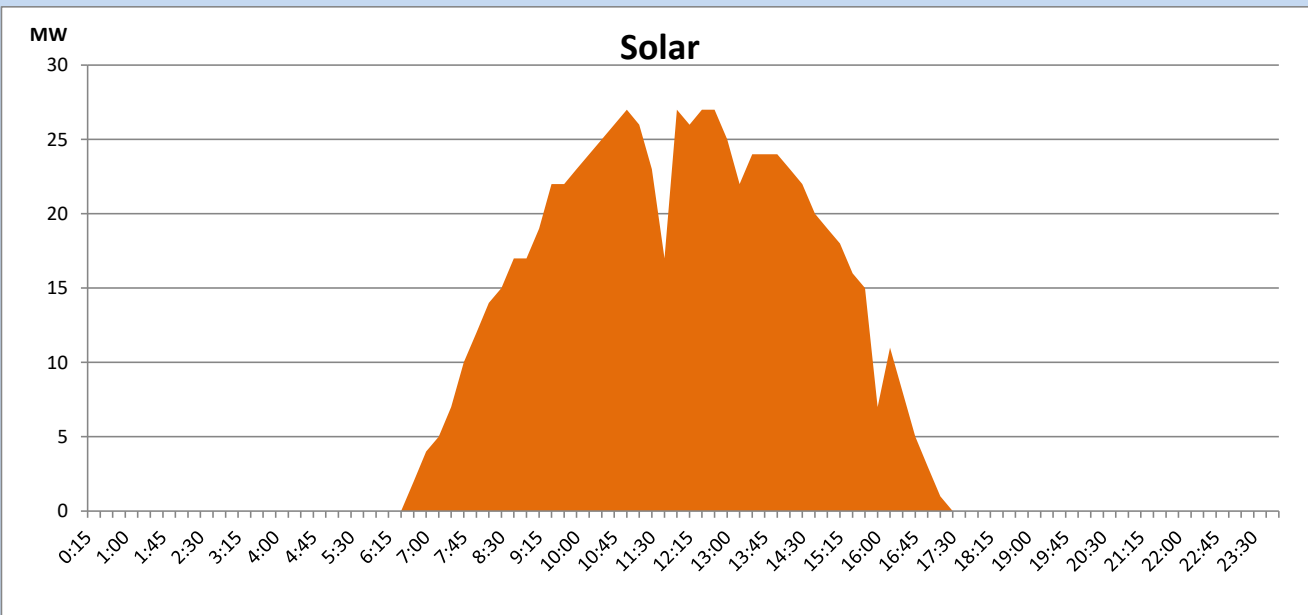
Based on Telemetered Power Stations only



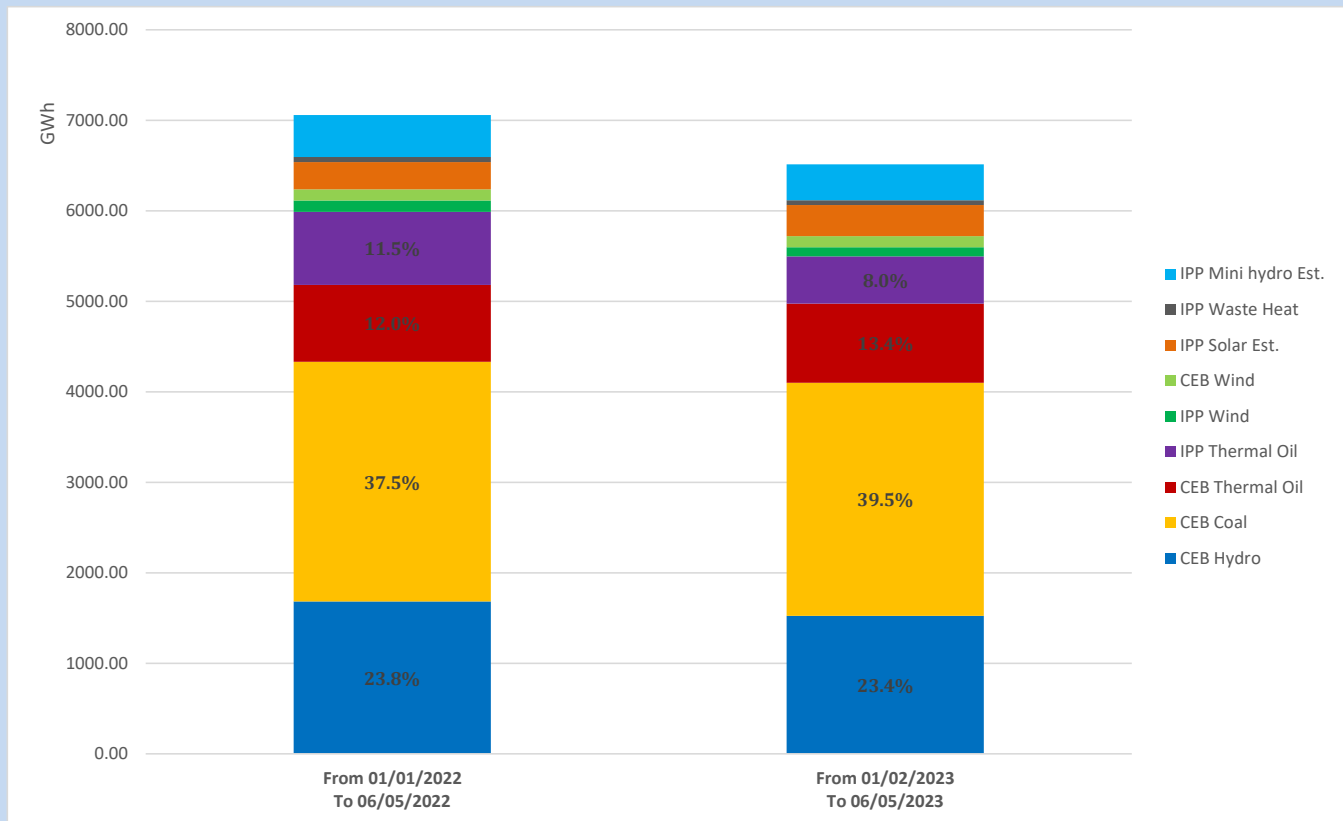
## Solar Generation during

June 5, 2023

Based on Telemetered Power Stations only



## Cumulative Dispatch Comparison with Last Year



The above figures are including contribution from roof top solar, non telemetered solar and mini hydro plants

## Thermal Plant Fuel types

Power Station	Primary Fuel
CEB Thermal	
Sapugaskanda 1	Heavy Fuel
Sapugaskanda 2	Heavy Fuel
Kelanitissa Small Gas Turbines	Auto Diesel
GT 7 - Kelanitissa	Auto Diesel
Kelanitissa CCY	Naphtha or Diesel
Lakvijaya 1	Coal
Lakvijaya 2	Coal
Lakvijaya 3	Coal
Uthuru Janani	Heavy Fuel
Barge CEB	Heavy Fuel
KCCPS -2	Auto Diesel

Power Station	Primary Fuel
Private Thermal	
West Coast	Auto Diesel / Heavy Fuel

## Major Incidents reported during the day

June 5, 2023

- 1) Kukule pond spilling stopped at 7:00hrs and spilling started again at 00:06hrs (06.06.2023).
- 2) New Polpitiya – Padukka 220kV cct 01 & 02 tripped and A/R from New Polpitiya end at 14:23hrs due to the operation of distance protection.
- 3) Kukula – Mathugama 132kV cct 01 & 02 tripped from both ends and the cct 01 A/R only from Mathugama end at 14:25hrs due to the operation of distance
- 4) Matara – Embilipitiya 132kV cct tripped and A/R from both ends at 15:51hrs due to the operation of distance protection.
- 5) Kelaniya – Aniyakanda 132kV cct which had been de-energized since 02.05.2023 due to high VT vibration, was energized at 17:17hrs.