

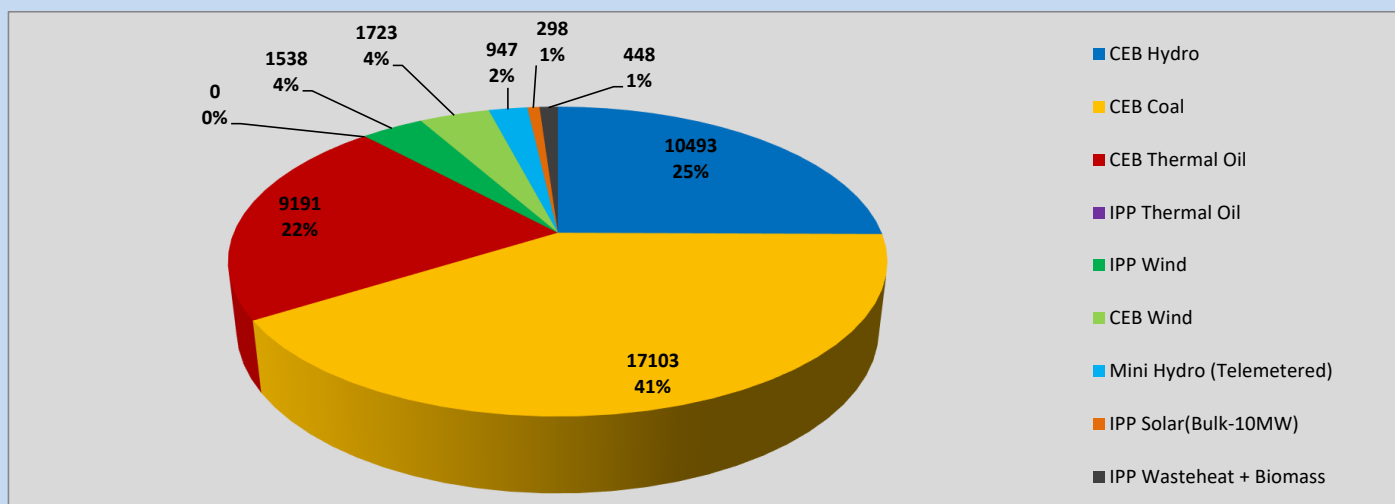
# Generation and Reservoirs Statistics

June 2, 2023



PUBLIC UTILITIES COMMISSION OF SRI LANKA

## Daily Generation Mix in MWh



Total Generation (Excluding estimated figures) =

41,741 MWh

### Estimated figures of CEB generation report

Estimated unserved energy = 0.00 GWh

Estimated Mini Hydro (Non telemetered) = 3133 MWh

Estimated IPP Solar PV (Bulk 1-10MW) = 304 MWh

Estimated Solar Roof Top PV = 1890 MWh

## Cumulative Dispatch

Following data excludes the contribution from roof top solar, non telemetered solar and mini hydro plants

### For Current Month

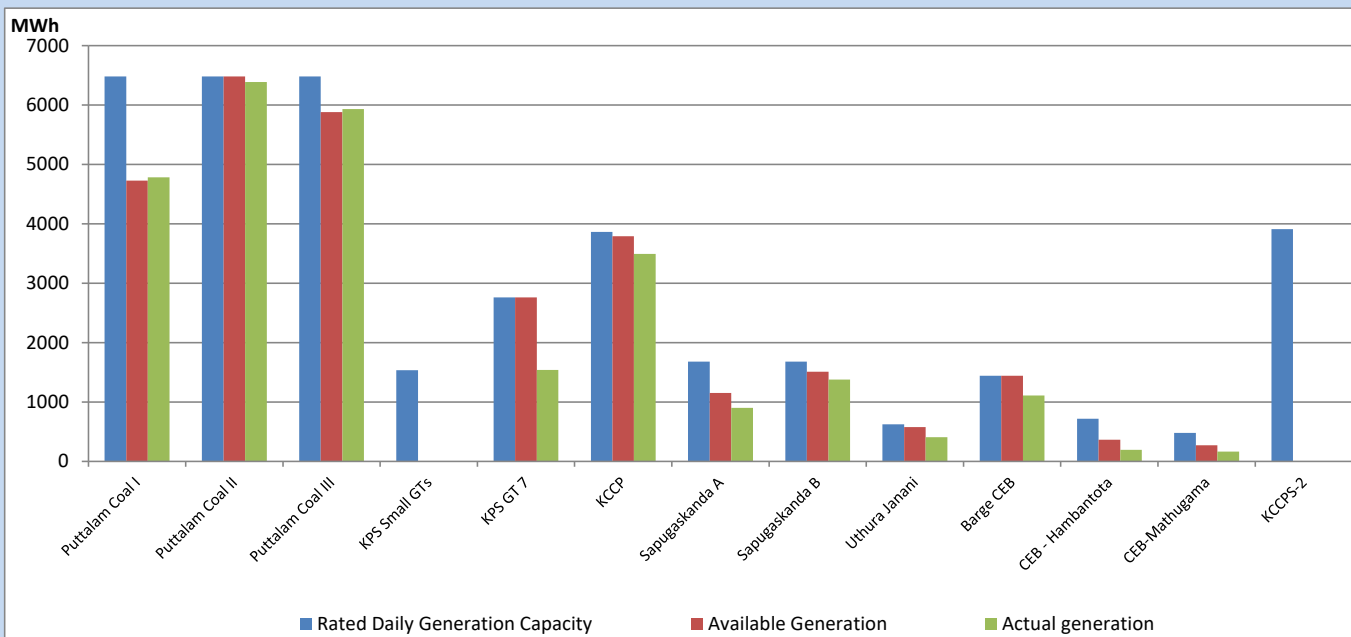
Category	Dispatch (GWh)	
CEB Hydro	21	24.66%
CEB Coal	34	40.84%
CEB Thermal Oil	19	22.86%
IPP Thermal	0	0.00%
SPP Wind	3	3.14%
CEB Wind	4	4.55%
Mini Hydro (Telemetered)	2	2.07%
IPP Solar (Bulk-10MW)	1	0.77%
IPP Wasteheat + BMP	1	1.10%
<b>Total</b>	<b>84</b>	

### For Current Year

Category	Dispatch (GWh)	
CEB Hydro	1,501	25.70%
CEB Coal	2,529	43.29%
CEB Thermal Oil	867	14.83%
IPP Thermal	517	8.85%
SPP Wind	93	1.60%
CEB Wind	115	1.97%
Mini Hydro (Telemetered)	128	2.19%
IPP Solar (Bulk-10MW)	44	0.75%
IPP Wasteheat	48	0.82%
<b>Total</b>	<b>5,842</b>	

## CEB owned Thermal Plant Dispatch

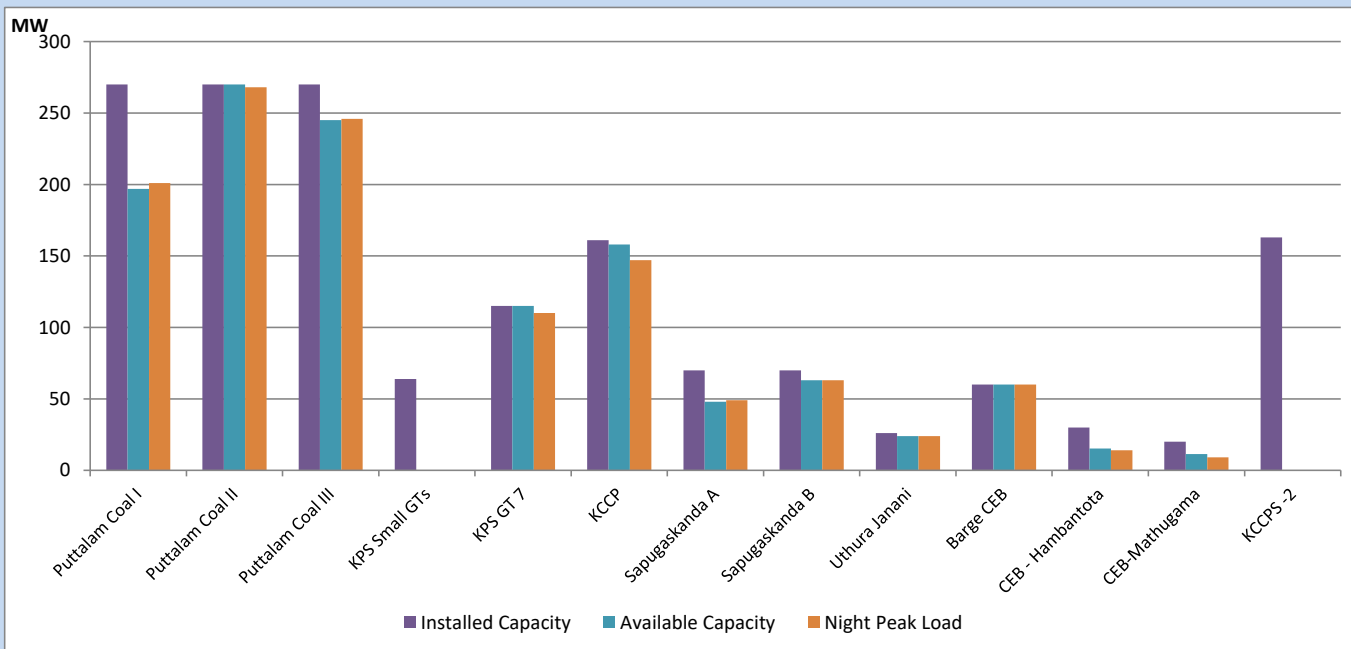
June 2, 2023



Available Generation is estimated based on plant availability at 6.00am on

June 3, 2023

## CEB owned Thermal Plant Loading at the Night Peak



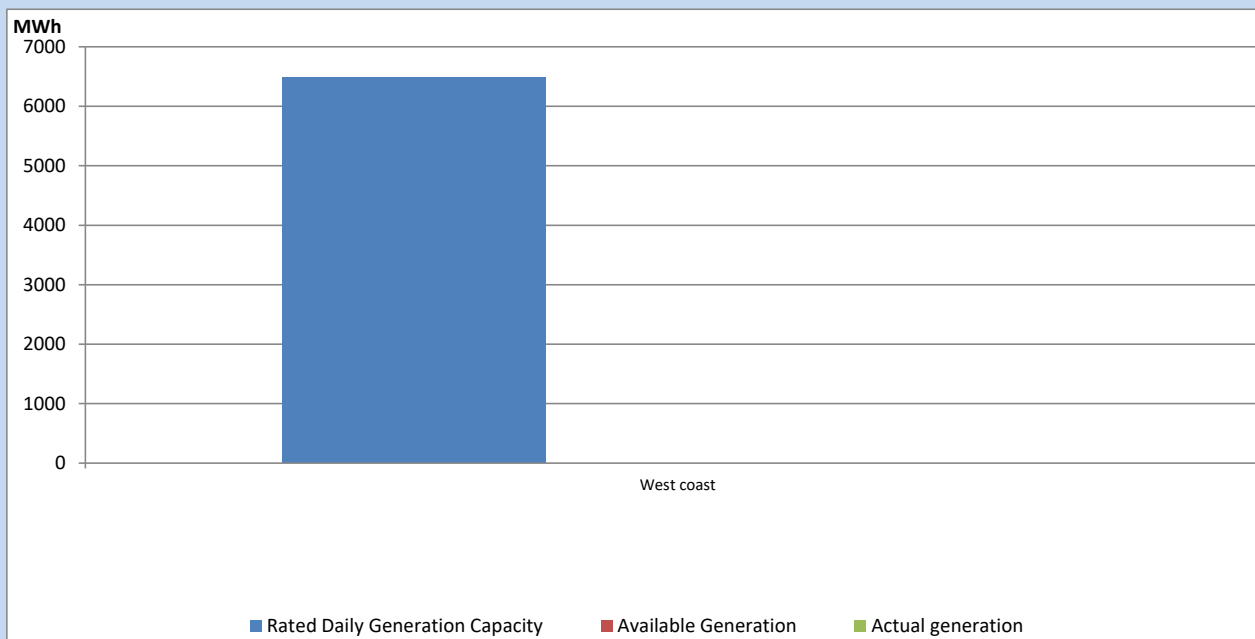
Note-

Plant availability is recorded at 6.00 am on

June 3, 2023

## IPP owned Thermal Plant Dispatch

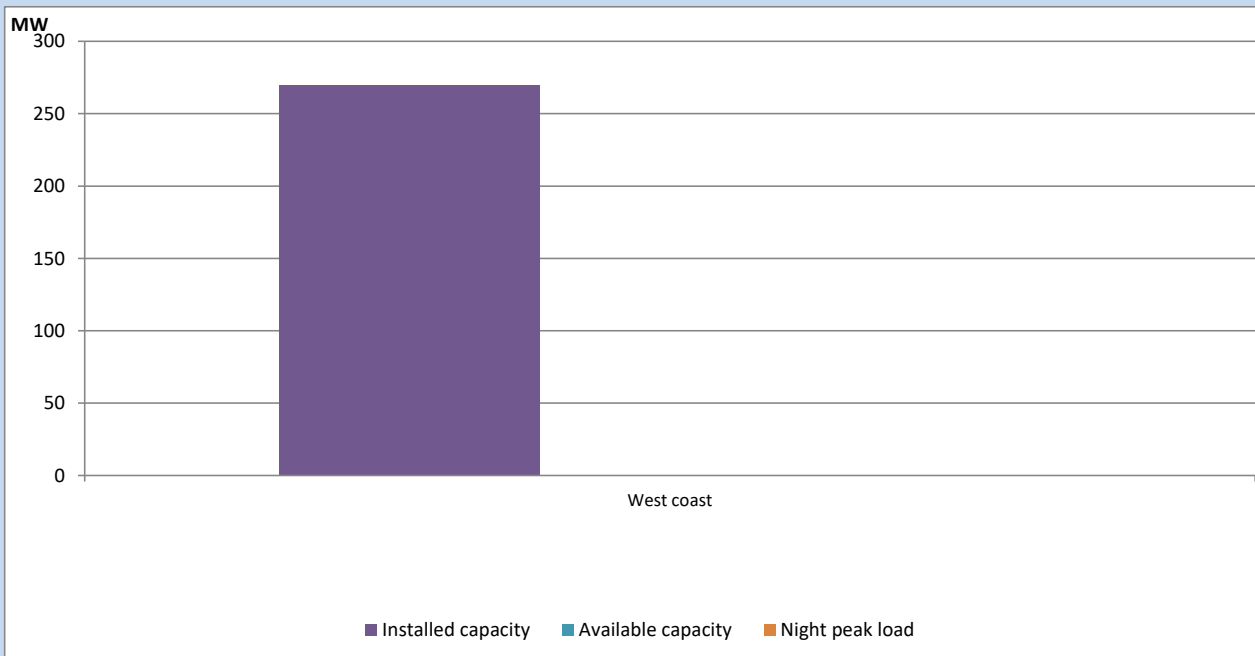
June 2, 2023



Available Generation is estimated based on plant availability at 6.00am on

June 3, 2023

## IPP owned Thermal Plant Loading at the Night Peak

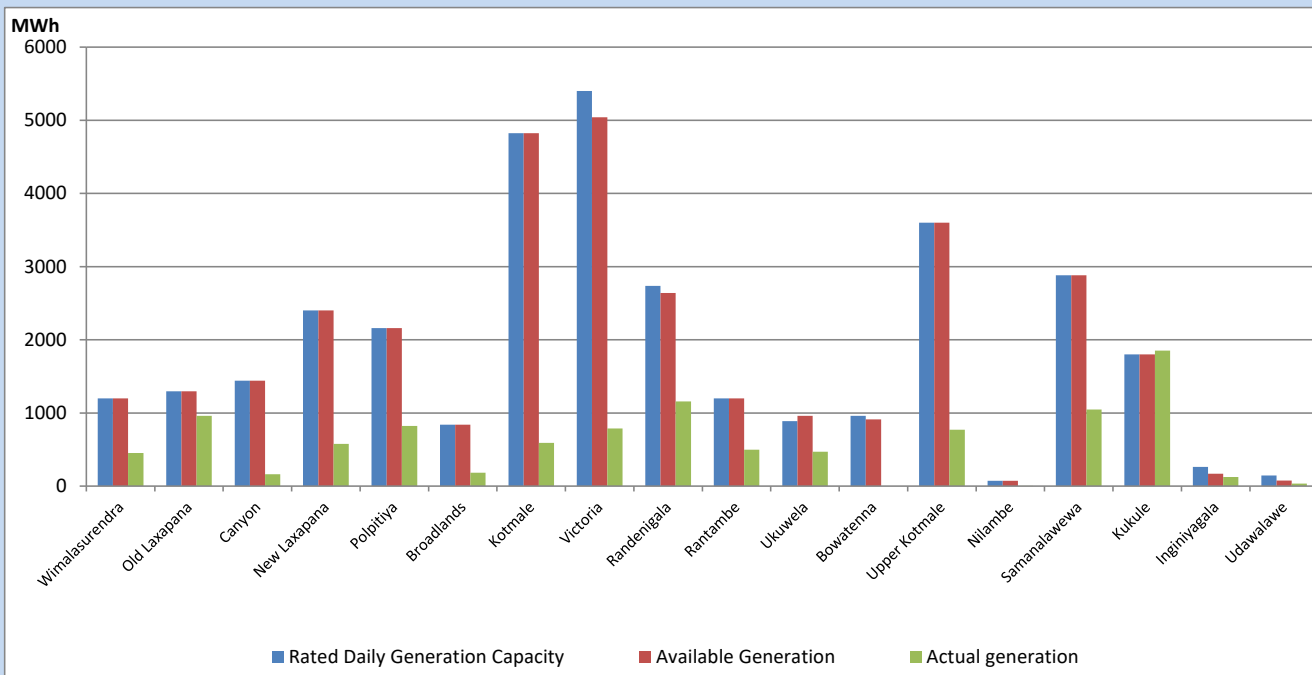


Note- Plant availability is recorded at 6.00 am on

June 3, 2023

## Major Hydro Plant Dispatch

June 2, 2023

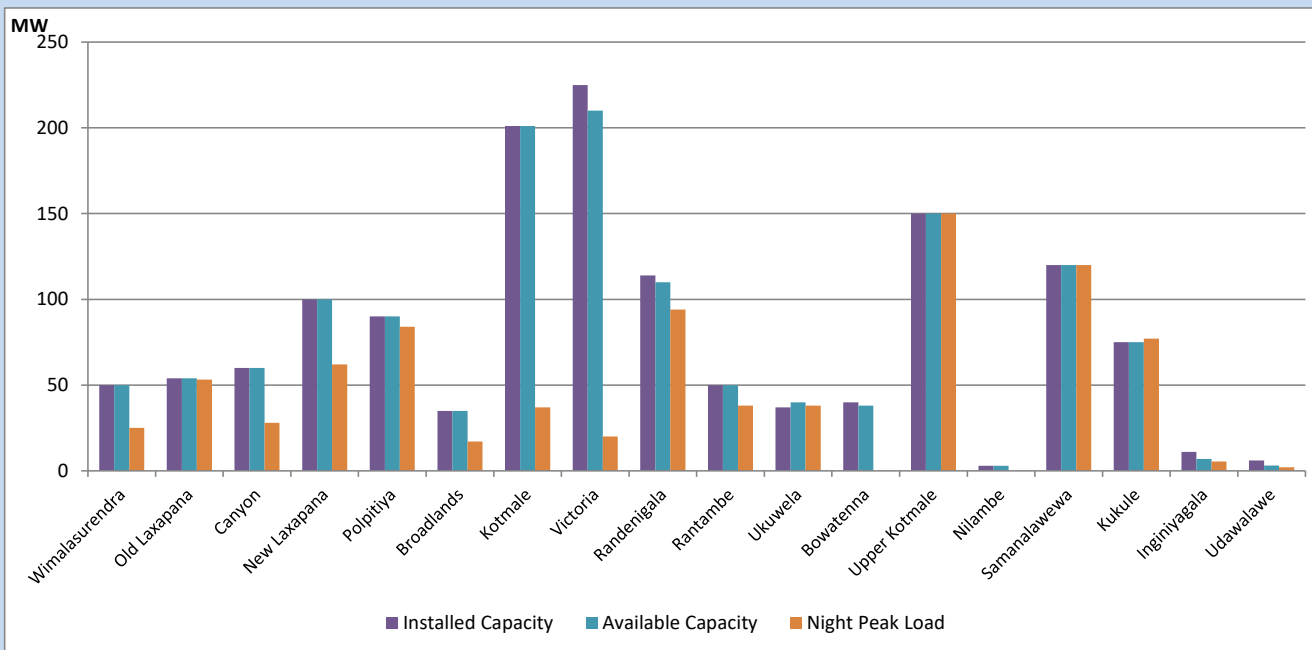


Available Generation is estimated based on plant availability at 6.00am on  
Broadlands power plant is operating in the Commissioning Stage

June 3, 2023

## Major Hydro Plant Loading at Night Peak

June 2, 2023



Note- Plant availability is recorded at 6.00 am on  
Broadlands power plant is operating in the Commissioning Stage

June 3, 2023

## Summary of Major Plant performance

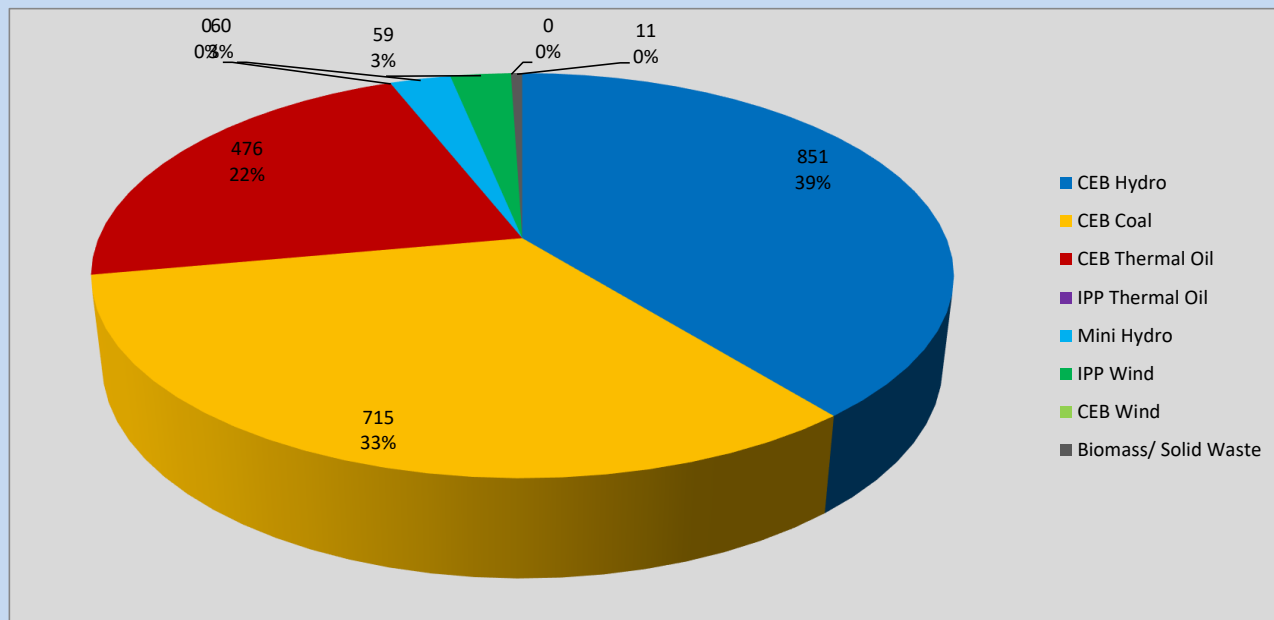
Plant	Installed Capacity	Plant Availability	Night peak Load	Plant Dispatch
	(MW)	(MW)	(MW)	(MWh)
Wimalasurendra	50	50	25	453
Old Laxapana	54	54	53	962
Canyon	60	60	28	162
New Laxapana	100	100	62	577
Polpitiya	90	90	84	821
Broadlands	35	35	17	184
Kotmale	201	201	37	590
Victoria	225	210	20	788
Randenigala	114	110	94	1,158
Rantambe	50	50	38	498
Ukuwela	37	40	38	471
Bowatenna	40	38	0	0
Upper Kotmale	150	150	150	770
Nilambe	3	3	0	3
Samanalawewa	120	120	120	1,047
Kukule	75	75	77	1,852
Inginiyagala	11	7	5	124
Udawalawe	6	3	2	33
Puttalam Coal I	270	197	201	4,784
Puttalam Coal II	270	270	268	6,386
Puttalam Coal III	270	245	246	5,933
KPS Small GTs	64	0	0	0
KPS GT 7	115	115	110	1,541
KCCP	161	158	147	3,495
Sapugaskanda A	70	48	49	902
Sapugaskanda B	70	63	63	1,378
Uthura Janani	26	24	24	407
Barge CEB	60	60	60	1,111
CEB-Hambantota	30	15	14	193
CEB-Mathugama	20	11	9	164
ACE Matara	24	0	0	0
Asia Power	50	0	0	0
KCCPS -2	163	0	0	0
West Coast	270	0	0	0
Nothern Power	36	0	0	0
ACE Embilipitiya	93	0	0	0
<b>Total</b>	<b>3,483</b>	<b>2,603</b>	<b>2,168</b>	<b>41,741</b>

Plant availability is the availability recorded at 6 am on

June 3, 2023

## Contribution to the Night Peak in MW

June 2, 2023

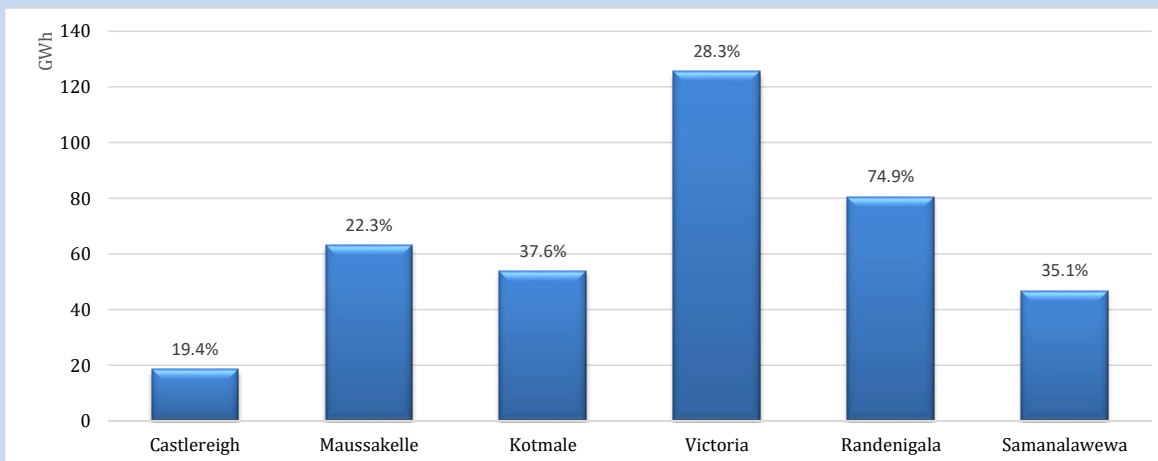


Night Peak*	2,168 MW
Day Peak Maximum Demand	1,967 MW
Day Peak Minimum Demand	1,699 MW
Off Peak Minimum Demand	1,308 MW

Above figures are excluding contribution from roof top solar, non telemetered solar and mini hydro plants

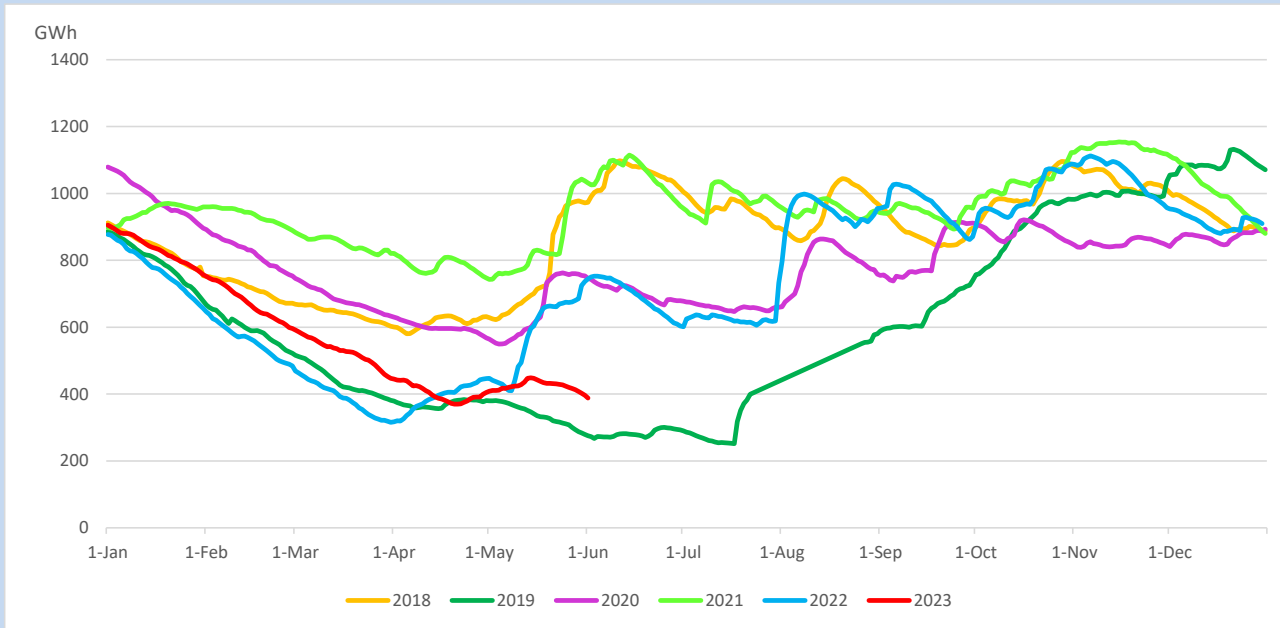
## Reservoir Levels -

as at 06.00 Hr on June 3, 2023

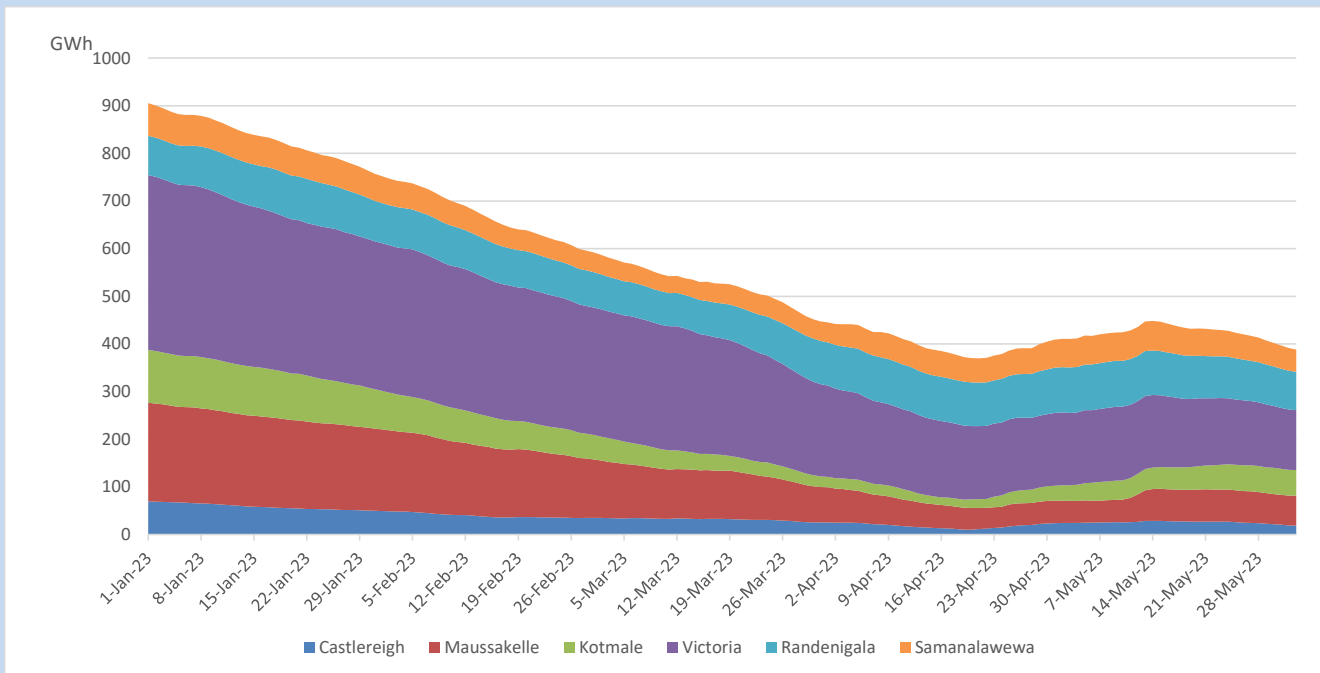


Total Reservoir Level	388.2 GWh
% of Total capacity	32.2%

## Comparison of Total Reservoir Storage Levels with Past Years

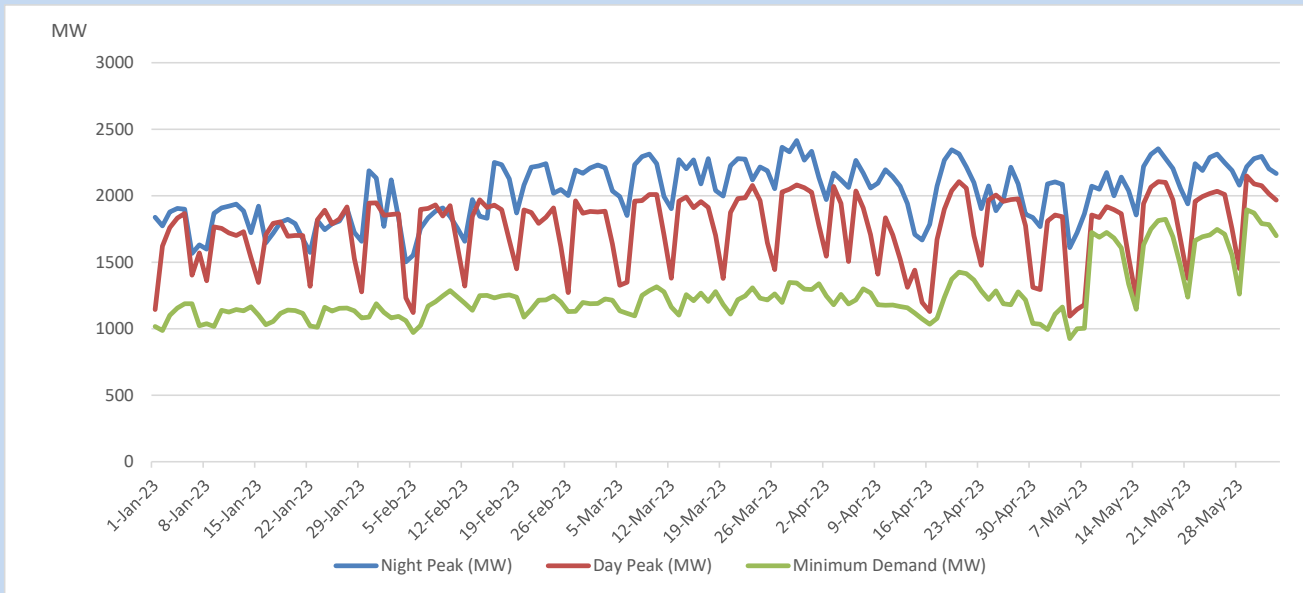


## Variation of Major Hydro Reservoir Levels in the current year (GWh)





## Variation of Demand during the current year

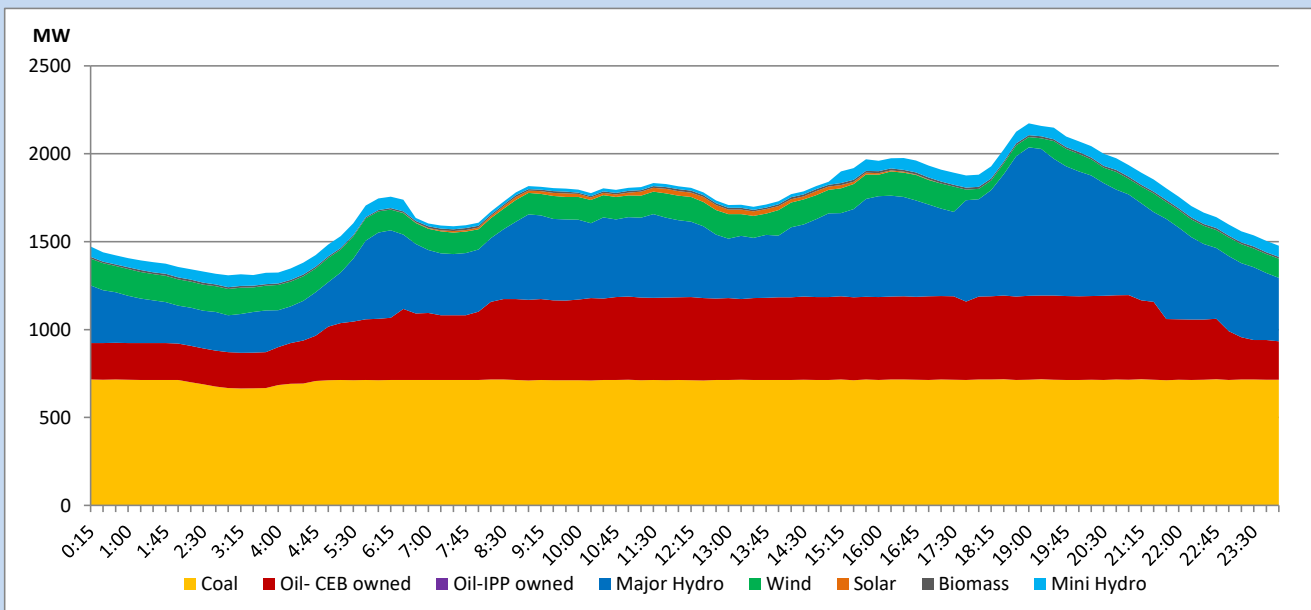


The above figures are excluding contribution from roof top solar, non telemetered solar and mini hydro plants

## Daily Load Curve

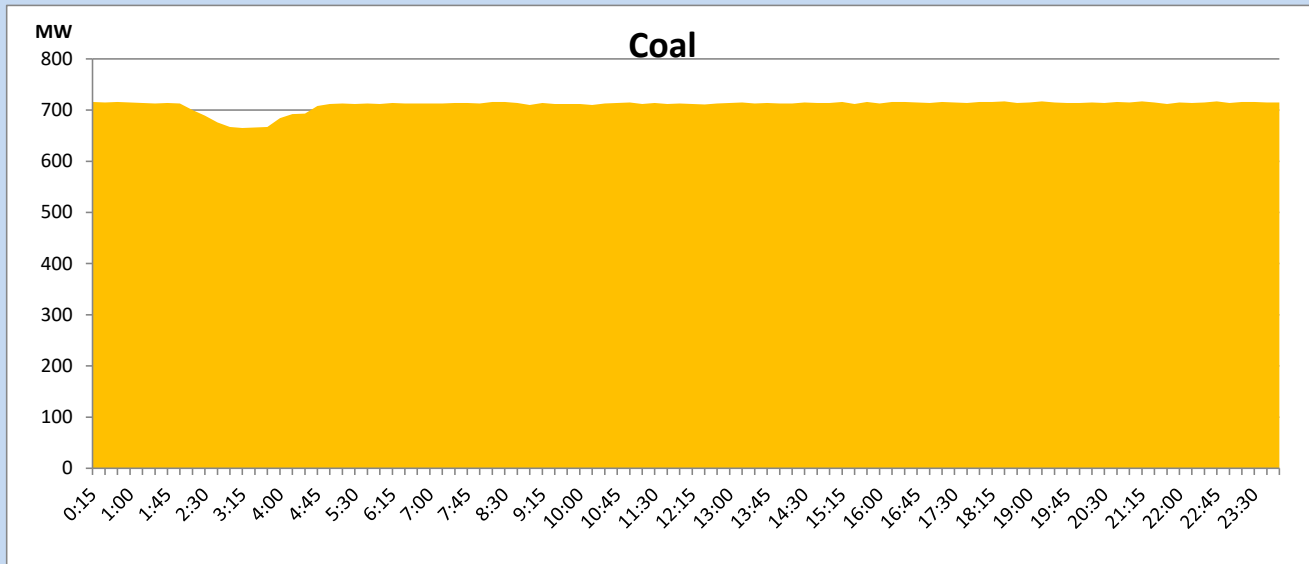
June 2, 2023

Solar and wind data is based on Telemetered Power Stations only



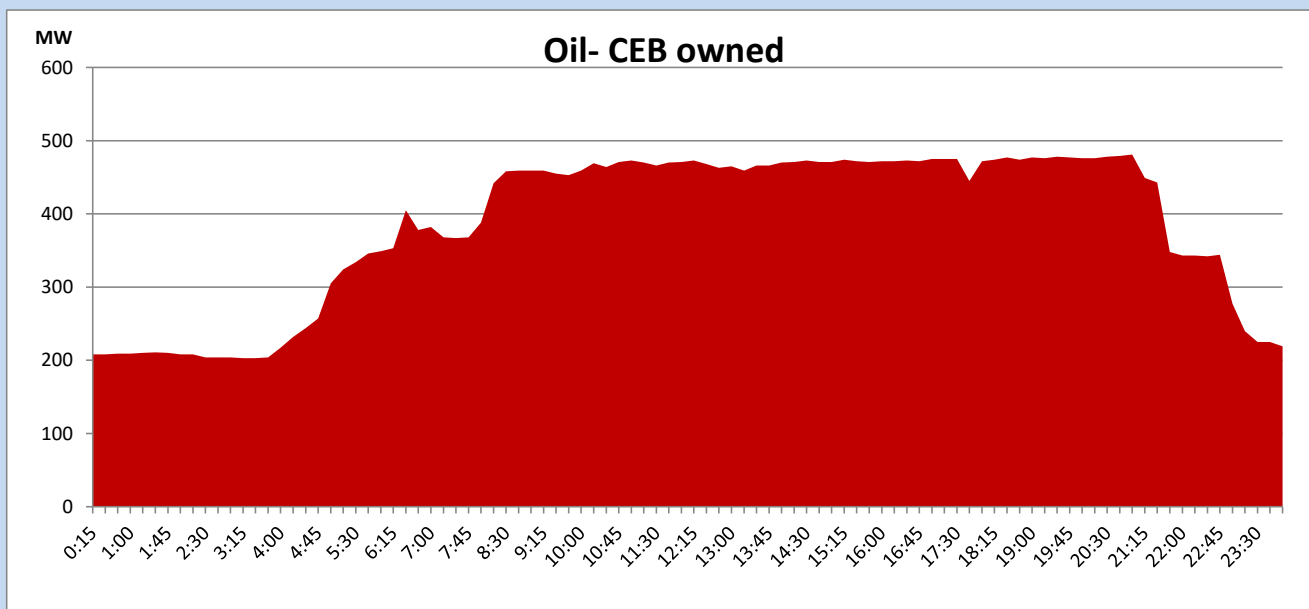
## Coal Generation during

June 2, 2023



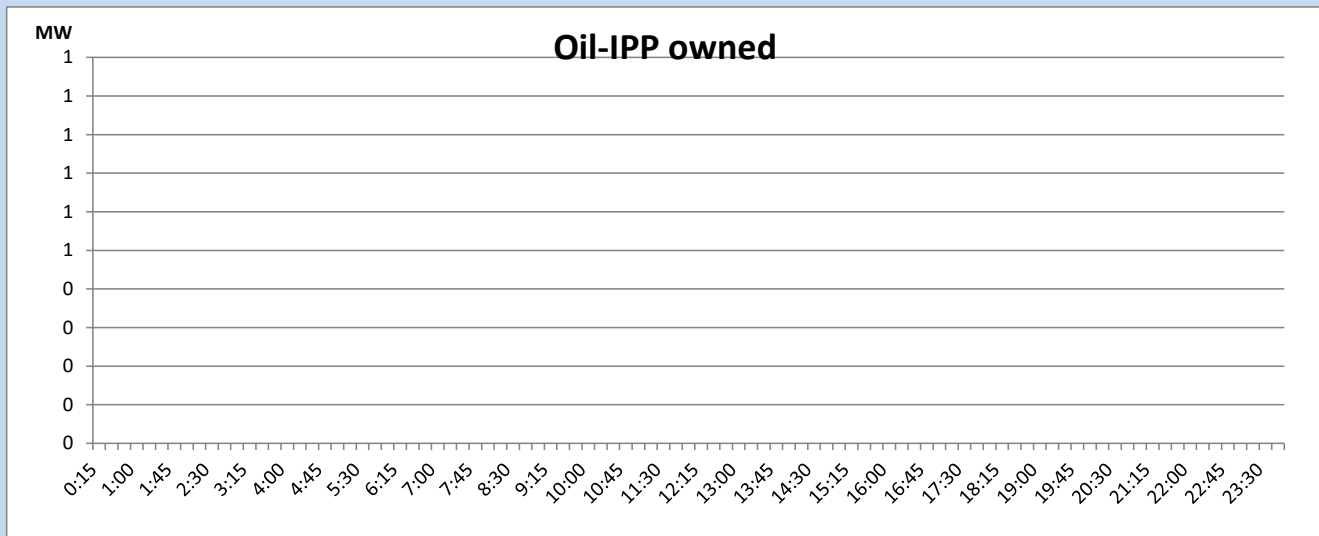
## CEB Oil Plant Generation during

June 2, 2023



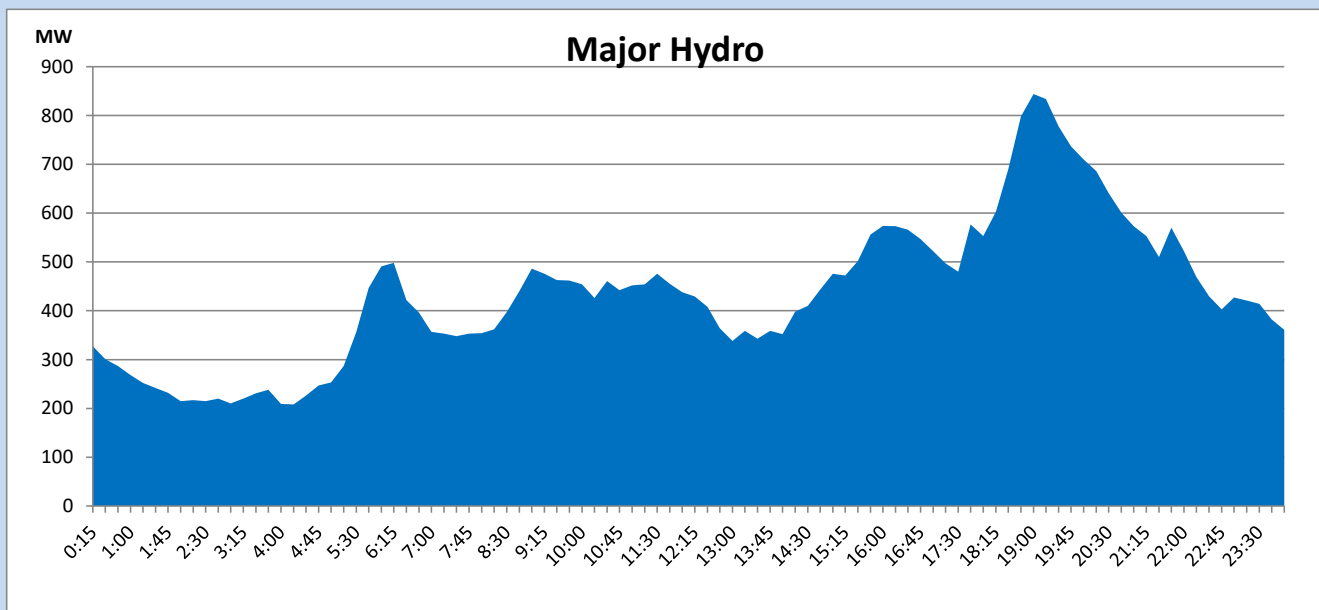
## IPP Oil Plant Generation during

June 2, 2023



## Major Hydro Generation during

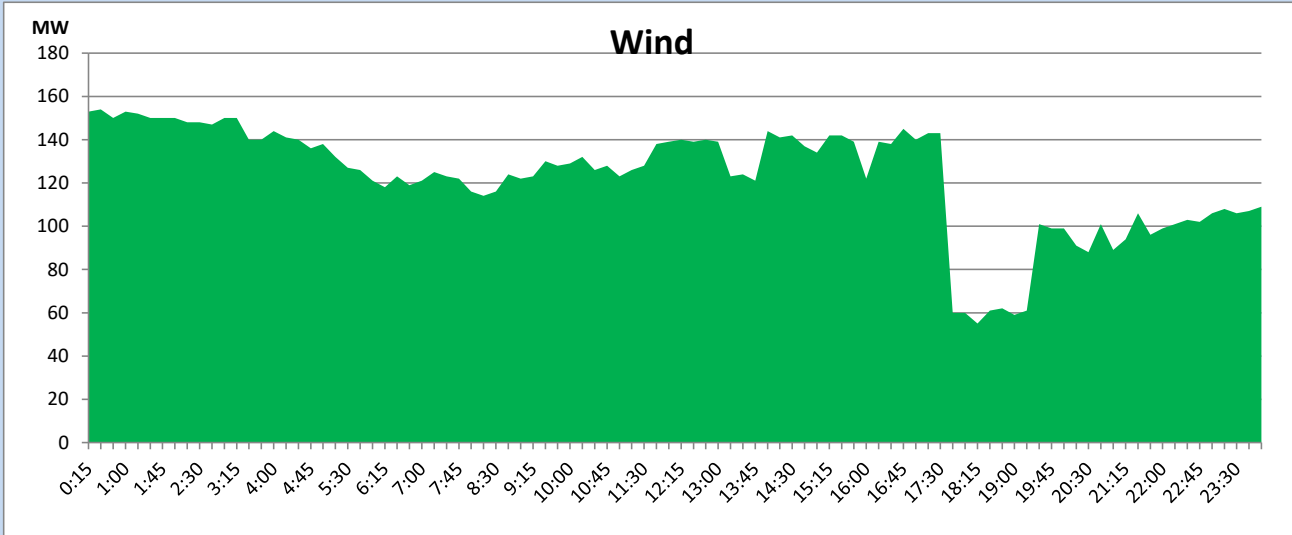
June 2, 2023



## Wind Generation during

June 2, 2023

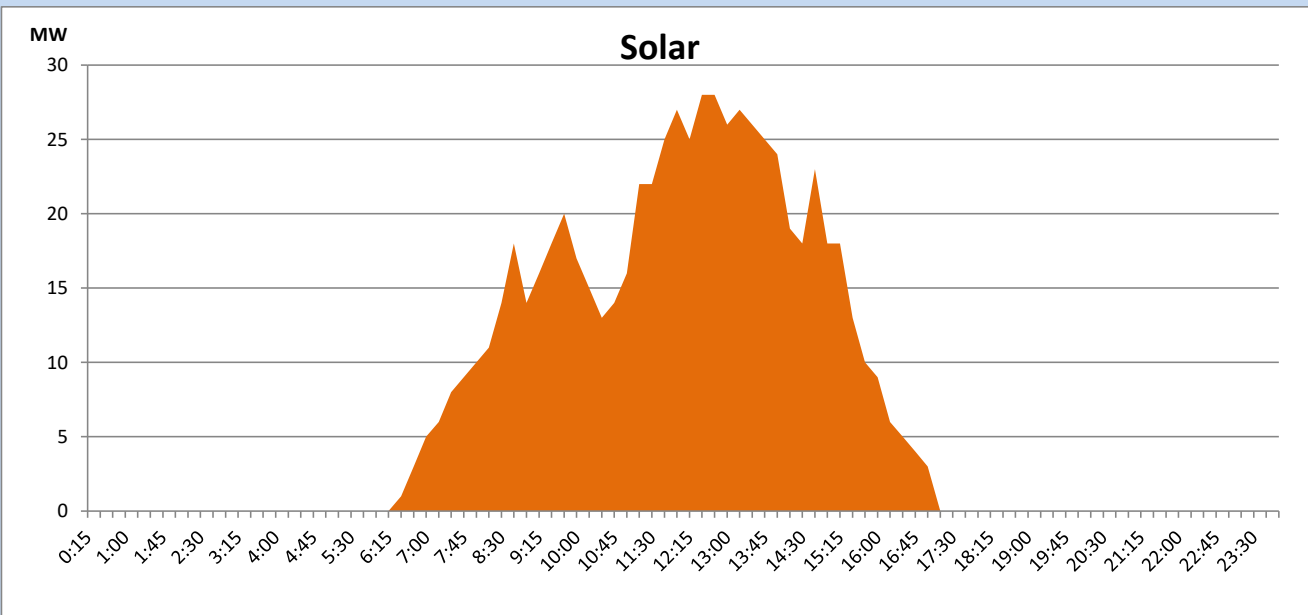
Based on Telemetered Power Stations only



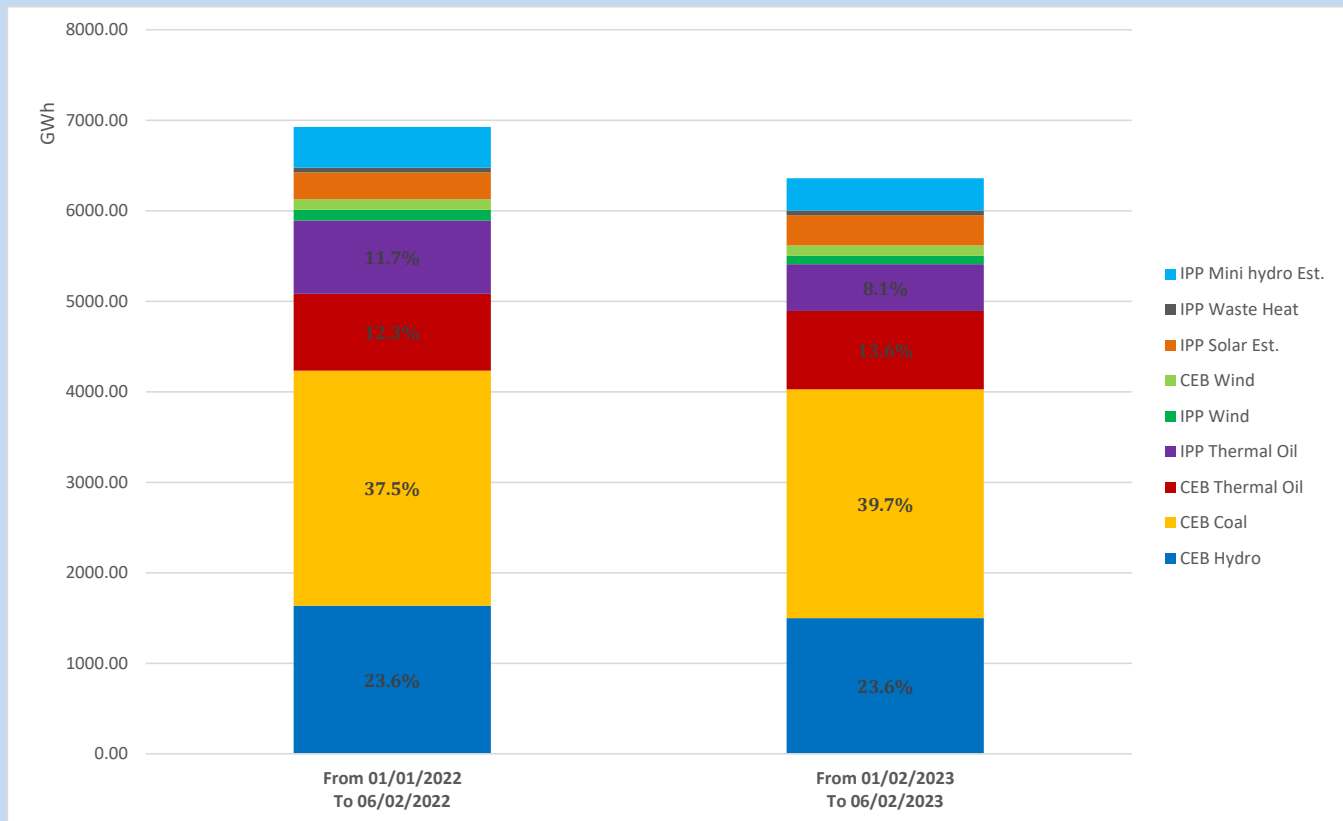
## Solar Generation during

June 2, 2023

Based on Telemetered Power Stations only



## Cumulative Dispatch Comparison with Last Year



The above figures are including contribution from roof top solar, non telemetered solar and mini hydro plants

## Thermal Plant Fuel types

Power Station	Primary Fuel
CEB Thermal	
Sapugaskanda 1	Heavy Fuel
Sapugaskanda 2	Heavy Fuel
Kelanitissa Small Gas Turbines	Auto Diesel
GT 7 - Kelanitissa	Auto Diesel
Kelanitissa CCY	Naphtha or Diesel
Lakvijaya 1	Coal
Lakvijaya 2	Coal
Lakvijaya 3	Coal
Uthuru Janani	Heavy Fuel
Barge CEB	Heavy Fuel
KCCPS -2	Auto Diesel

Power Station	Primary Fuel
Private Thermal	
West Coast	Auto Diesel / Heavy Fuel

## Major Incidents reported during the day

June 2, 2023

1) New Anuradhapura-Mannar cct 01 tripped from New Anuradhapura end only at 17:32hrs while New Anuradhapura-Mannar cct 02 was being normalized from New Anuradhapura end after a planned outage of the cct, causing Mannar and Nadukuda GSS s to be dead. At the same time, Mannar wind generation of 89MW rejected from the system along with Mannar 220/33kV T/F 01 due to the loss of supply to the GSS s. New Anuradhapura-Mannar cct 01

and Mannar 220/33kV T/F 01 were restored at 18:18hrs and 18:20hrs respectively. Mannar wind generation resumed at 19:17hrs.