

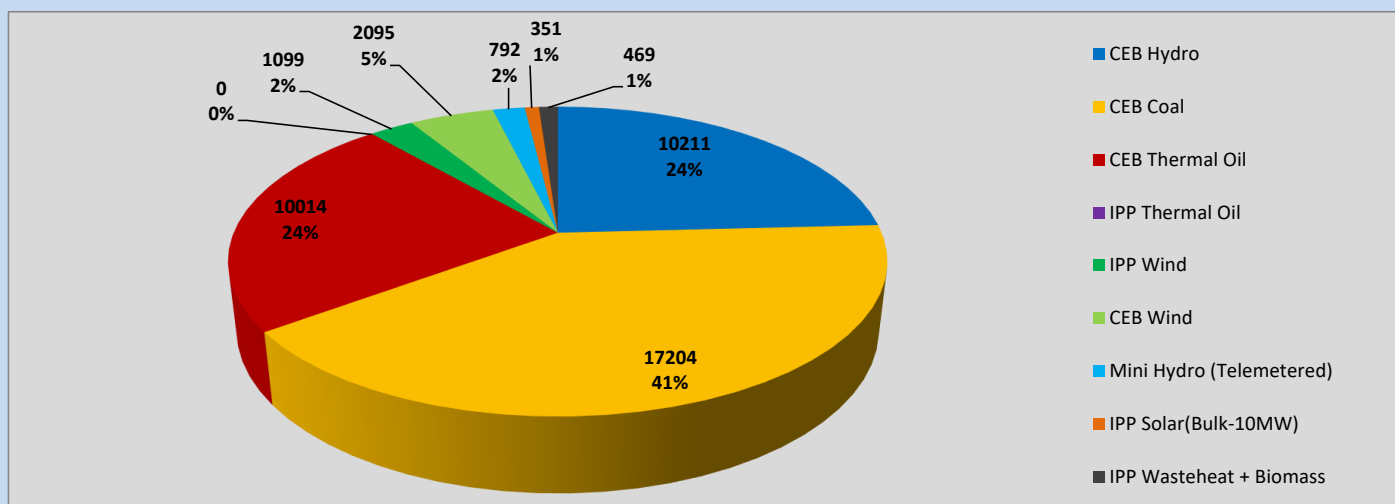
# Generation and Reservoirs Statistics

June 1, 2023



**PUBLIC UTILITIES COMMISSION OF SRI LANKA**

## Daily Generation Mix in MWh



Total Generation (Excluding estimated figures) =

42,235 MWh

### Estimated figures of CEB generation report

Estimated unserved energy = 0.00 GWh  
 Estimated Mini Hydro (Non telemetered) = 3288 MWh  
 Estimated IPP Solar PV (Bulk 1-10MW) = 304 MWh  
 Estimated Solar Roof Top PV = 1890 MWh

## Cumulative Dispatch

Following data excludes the contribution from roof top solar, non telemetered solar and mini hydro plants

### For Current Month

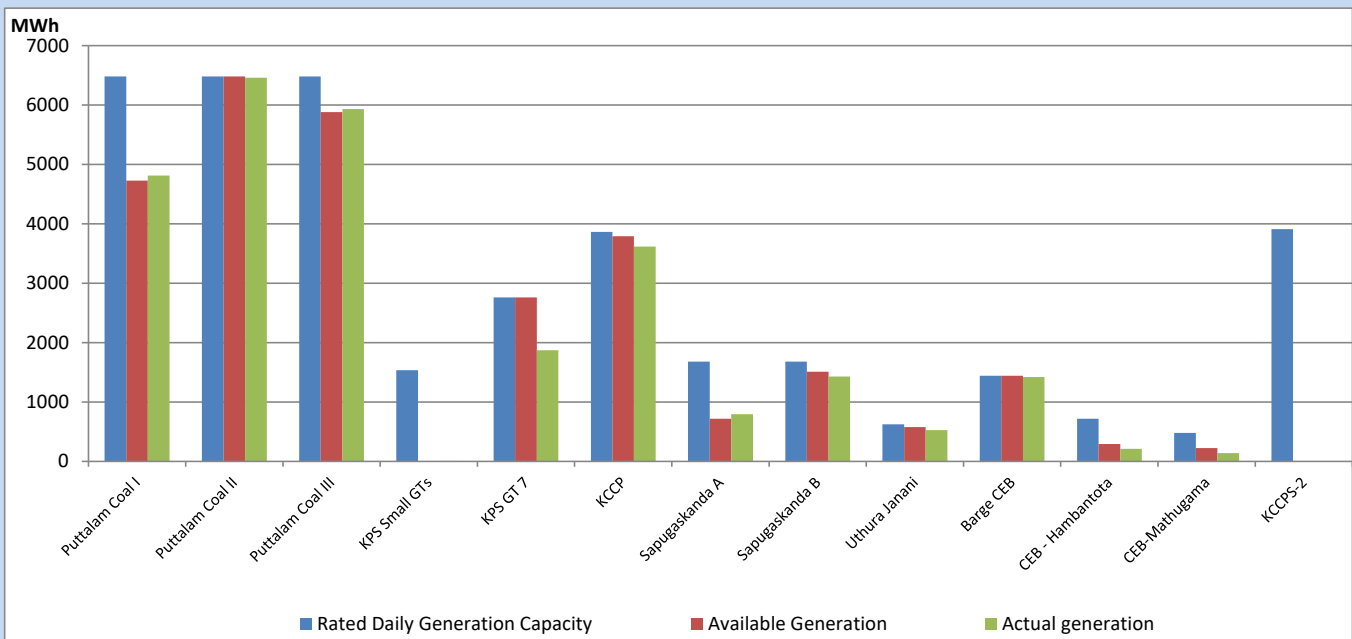
Category	Dispatch (GWh)	
CEB Hydro	10	24.18%
CEB Coal	17	40.73%
CEB Thermal Oil	10	23.70%
IPP Thermal	0	0.00%
SPP Wind	1	2.60%
CEB Wind	2	4.97%
Mini Hydro (Telemetered)	1	1.87%
IPP Solar (Bulk-10MW)	0	0.83%
IPP Wasteheat + BMP	0	1.11%
<b>Total</b>	<b>42</b>	

### For Current Year

Category	Dispatch (GWh)	
CEB Hydro	1,491	25.70%
CEB Coal	2,512	43.31%
CEB Thermal Oil	857	14.78%
IPP Thermal	517	8.91%
SPP Wind	92	1.58%
CEB Wind	113	1.95%
Mini Hydro (Telemetered)	127	2.18%
IPP Solar (Bulk-10MW)	44	0.75%
IPP Wasteheat	48	0.82%
<b>Total</b>	<b>5,800</b>	

## CEB owned Thermal Plant Dispatch

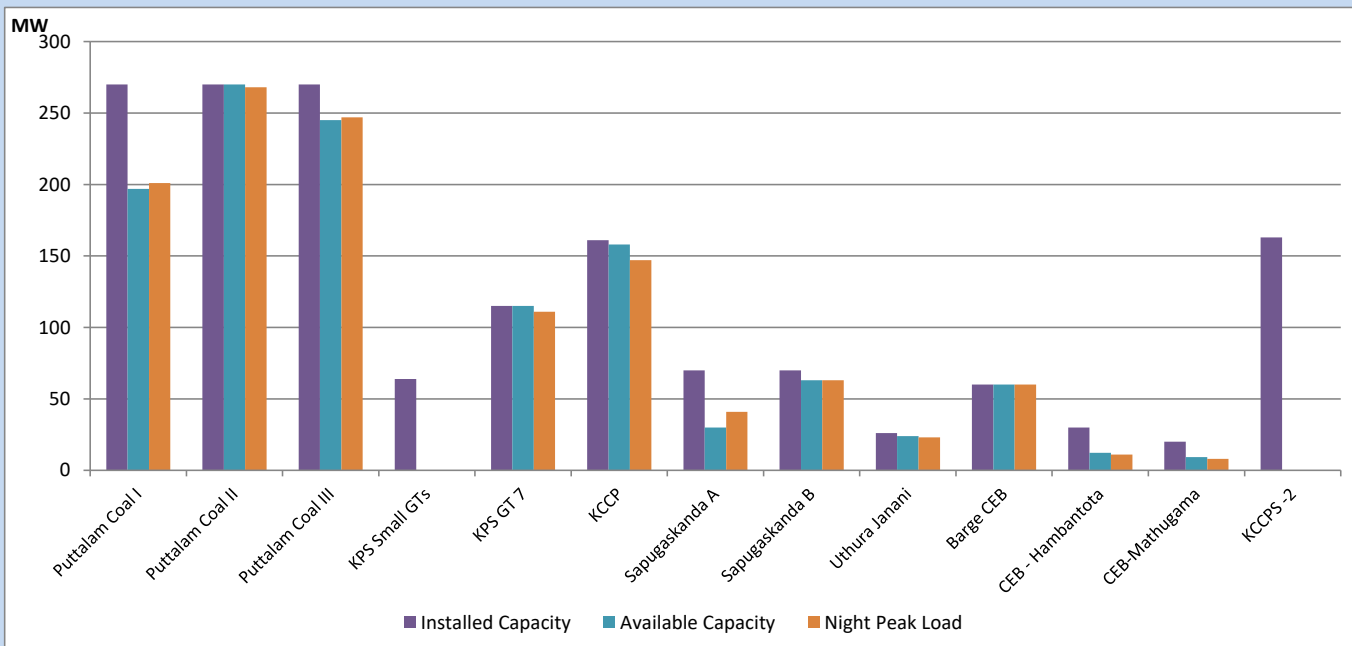
June 1, 2023



Available Generation is estimated based on plant availability at 6.00am on

June 2, 2023

## CEB owned Thermal Plant Loading at the Night Peak



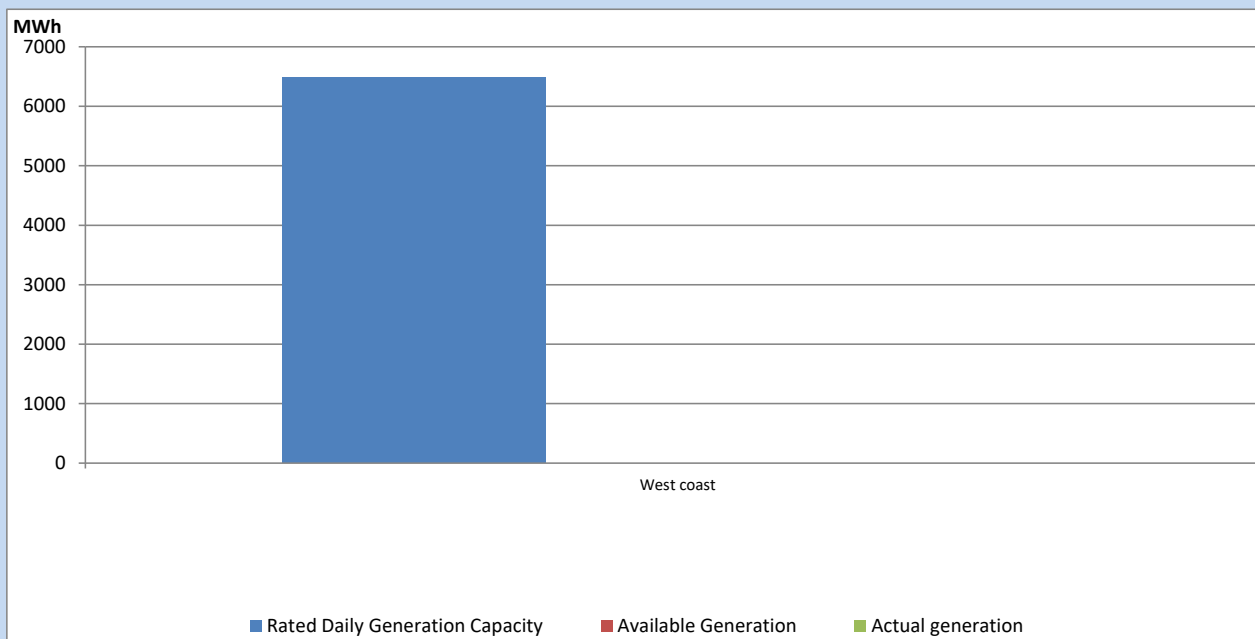
Note-

Plant availability is recorded at 6.00 am on

June 2, 2023

## IPP owned Thermal Plant Dispatch

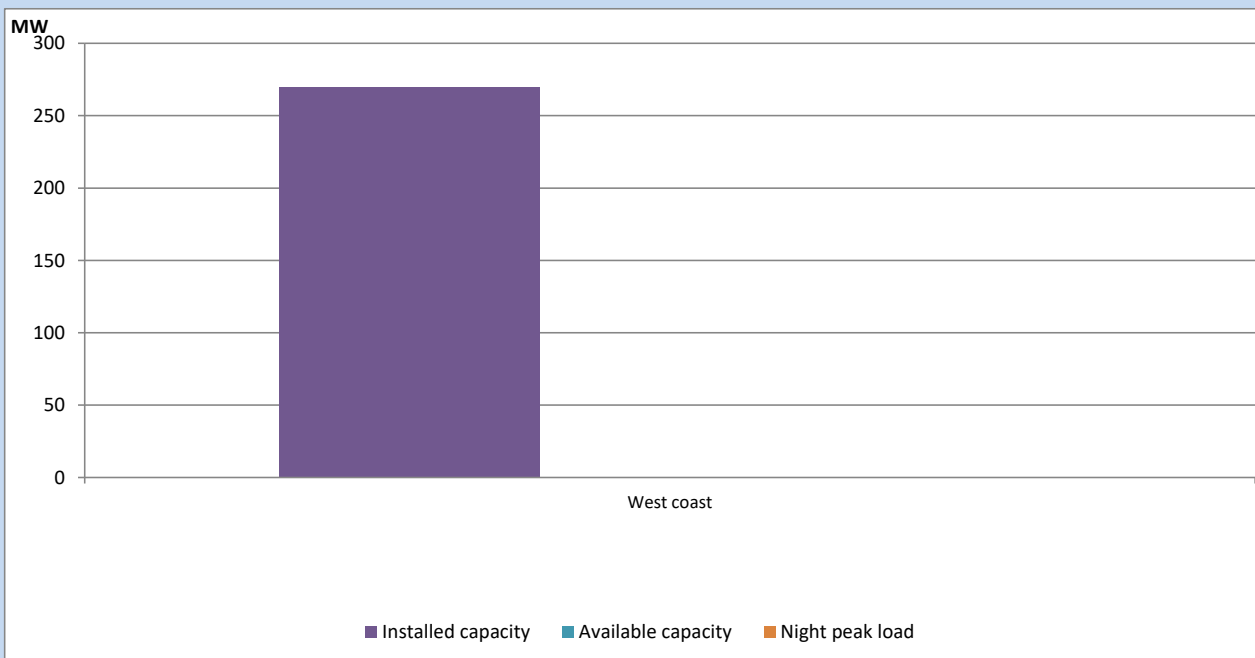
June 1, 2023



Available Generation is estimated based on plant availability at 6.00am on

June 2, 2023

## IPP owned Thermal Plant Loading at the Night Peak

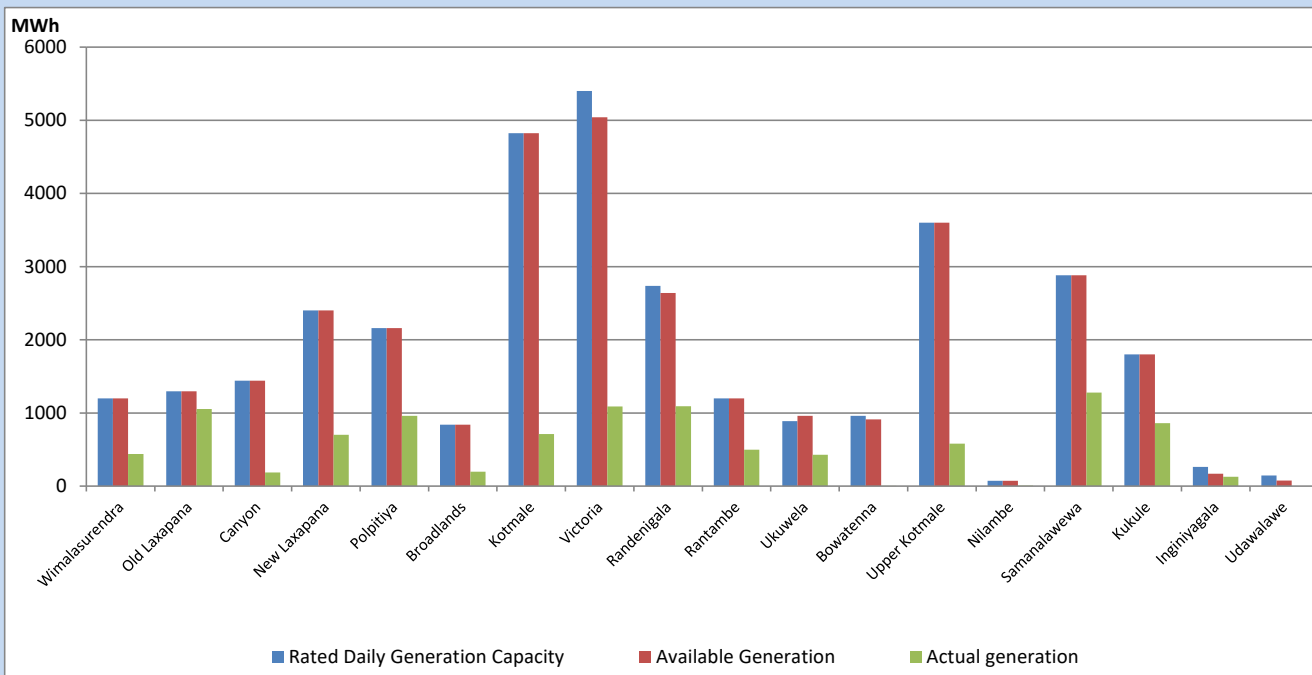


Note- Plant availability is recorded at 6.00 am on

June 2, 2023

## Major Hydro Plant Dispatch

June 1, 2023

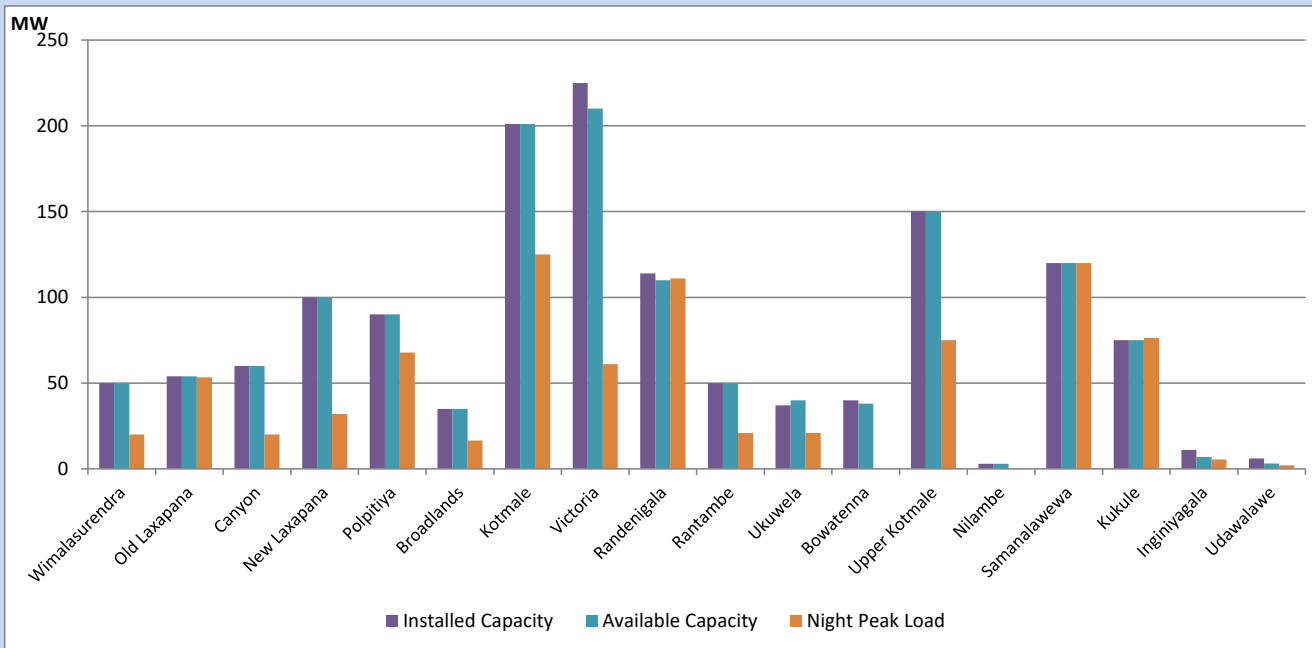


Available Generation is estimated based on plant availability at 6.00am on  
Broadlands power plant is operating in the Commissioning Stage

June 2, 2023

## Major Hydro Plant Loading at Night Peak

June 1, 2023



Note- Plant availability is recorded at 6.00 am on  
Broadlands power plant is operating in the Commissioning Stage

June 2, 2023

## Summary of Major Plant performance

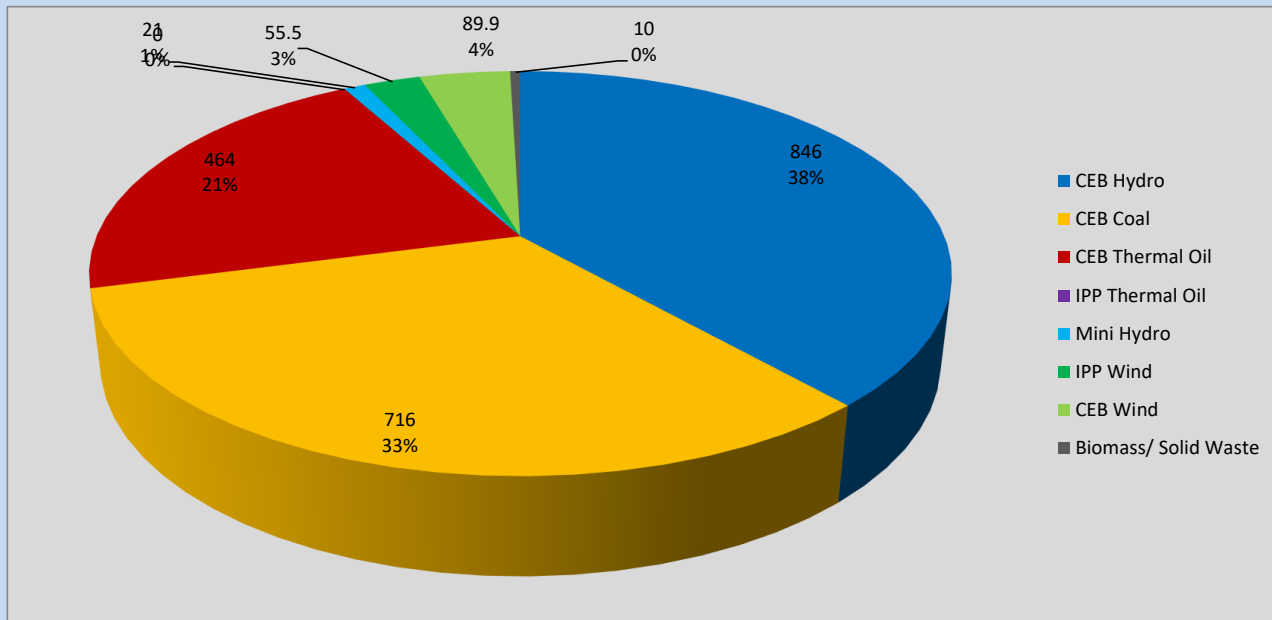
Plant	Installed Capacity	Plant Availability	Night peak Load	Plant Dispatch
	(MW)	(MW)	(MW)	(MWh)
Wimalasurendra	50	50	20	438
Old Laxapana	54	54	53	1,054
Canyon	60	60	20	186
New Laxapana	100	100	32	701
Polpitiya	90	90	68	960
Broadlands	35	35	17	196
Kotmale	201	201	125	710
Victoria	225	210	61	1,090
Randenigala	114	110	111	1,091
Rantambe	50	50	21	499
Ukuwela	37	40	21	429
Bowatenna	40	38	0	4
Upper Kotmale	150	150	75	582
Nilambe	3	3	0	6
Samanalawewa	120	120	120	1,278
Kukule	75	75	76	860
Inginiyagala	11	7	5	127
Udawalawe	6	3	2	0
Puttalam Coal I	270	197	201	4,811
Puttalam Coal II	270	270	268	6,461
Puttalam Coal III	270	245	247	5,932
KPS Small GTs	64	0	0	6
KPS GT 7	115	115	111	1,872
KCCP	161	158	147	3,615
Sapugaskanda A	70	30	41	794
Sapugaskanda B	70	63	63	1,430
Uthura Janani	26	24	23	526
Barge CEB	60	60	60	1,419
CEB-Hambantota	30	12	11	214
CEB-Mathugama	20	9	8	138
ACE Matara	24	0	0	0
Asia Power	50	0	0	0
KCCPS -2	163	0	0	0
West Coast	270	0	0	0
Nothern Power	36	0	0	0
ACE Embilipitiya	93	0	0	0
<b>Total</b>	<b>3,483</b>	<b>2,580</b>	<b>2,184</b>	<b>42,235</b>

Plant availability is the availability recorded at 6 am on

June 2, 2023

## Contribution to the Night Peak in MW

June 1, 2023

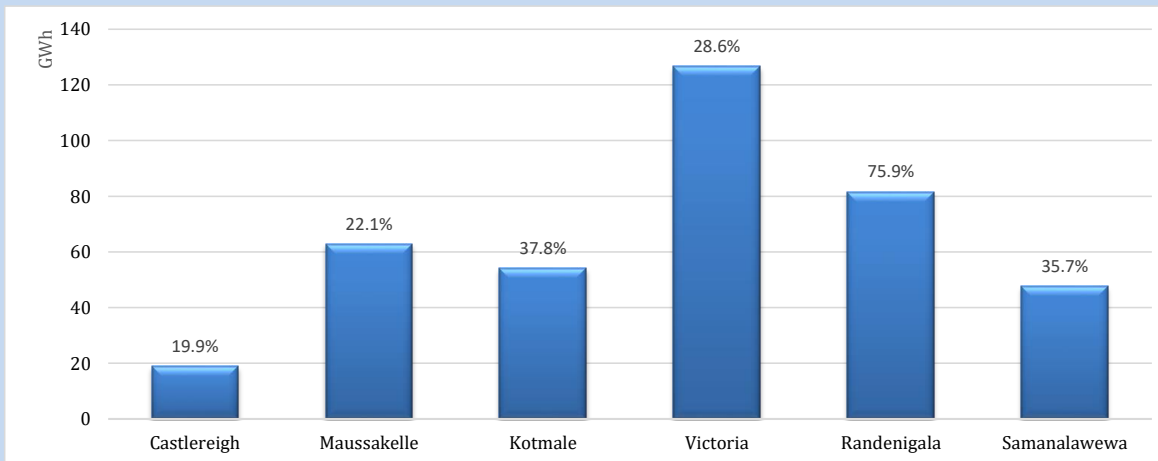


Night Peak*	2,203 MW
Day Peak Maximum Demand	2,014 MW
Day Peak Minimum Demand	1,783 MW
Off Peak Minimum Demand	1,332 MW

Above figures are excluding contribution from roof top solar, non telemetered solar and mini hydro plants

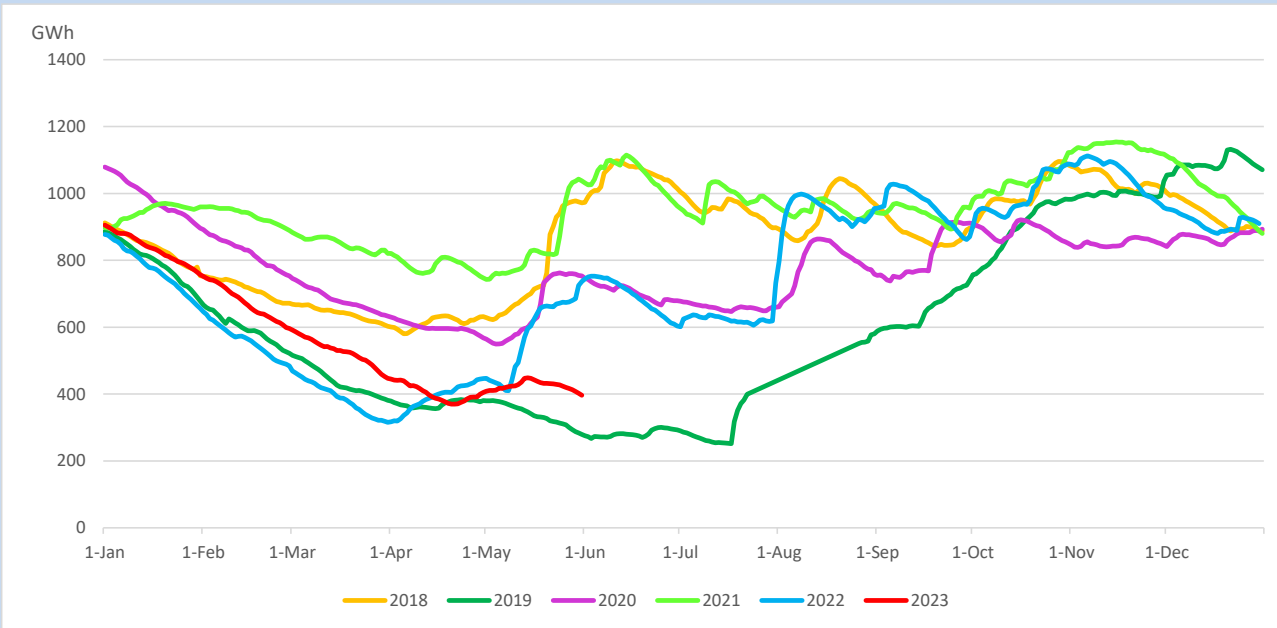
## Reservoir Levels -

as at 06.00 Hr on June 2, 2023

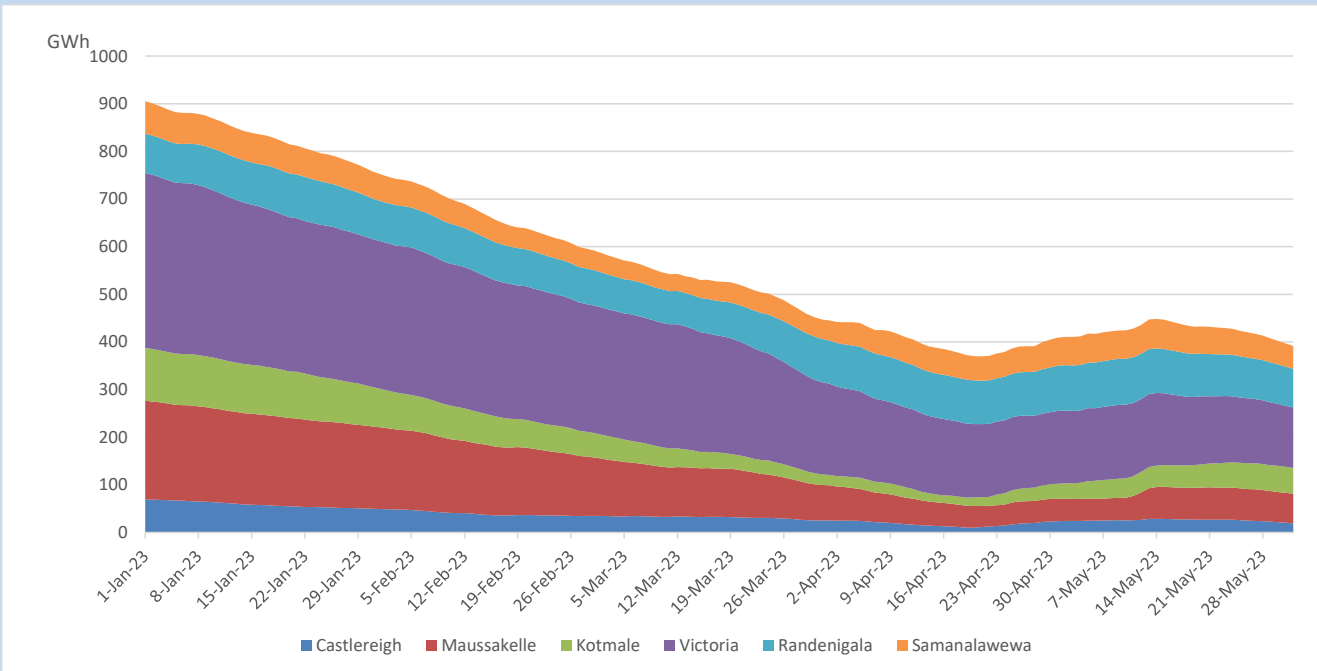


Total Reservoir Level	391.6 GWh
% of Total capacity	32.5%

## Comparison of Total Reservoir Storage Levels with Past Years

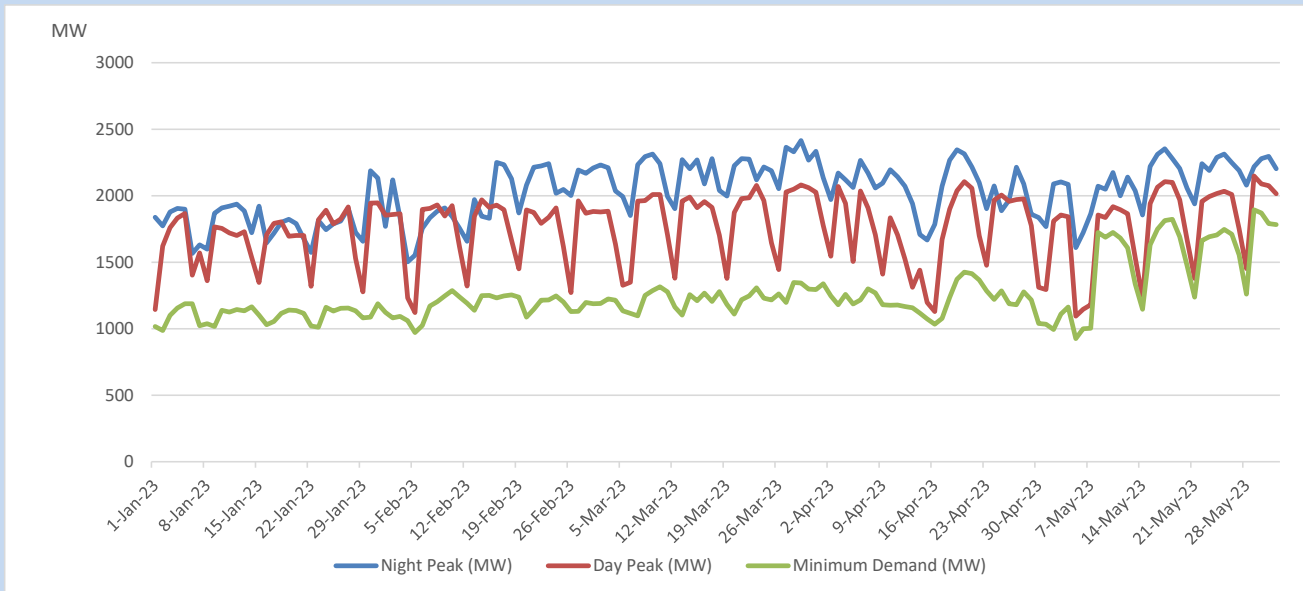


## Variation of Major Hydro Reservoir Levels in the current year (GWh)





## Variation of Demand during the current year

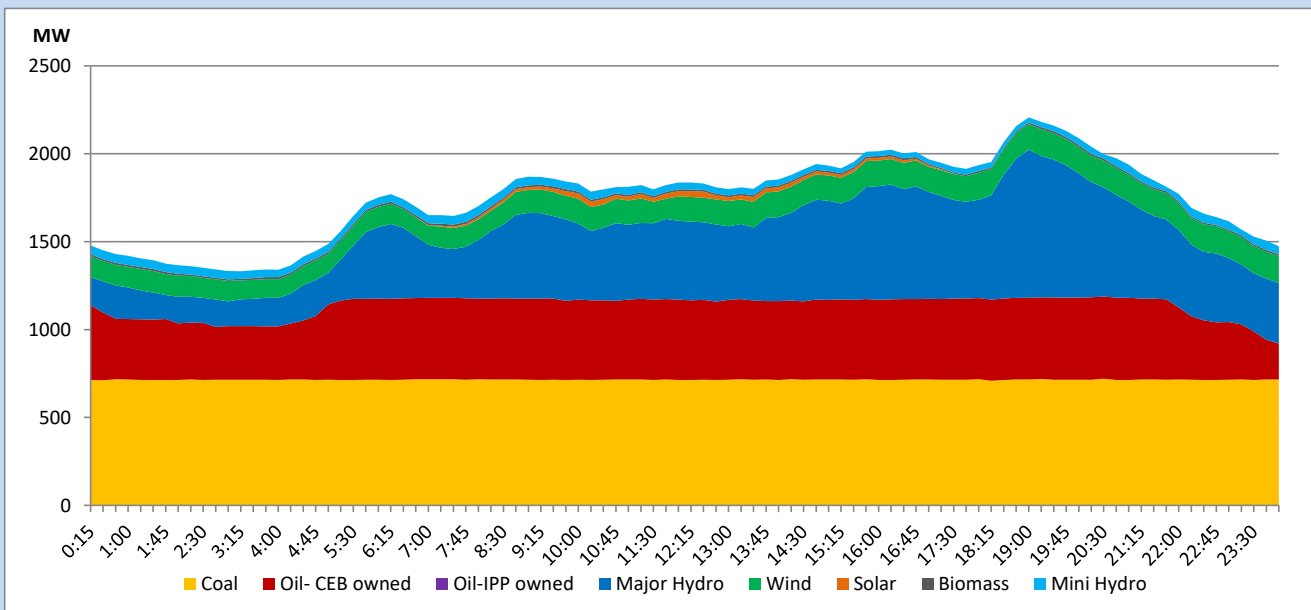


The above figures are excluding contribution from roof top solar, non telemetered solar and mini hydro plants

## Daily Load Curve

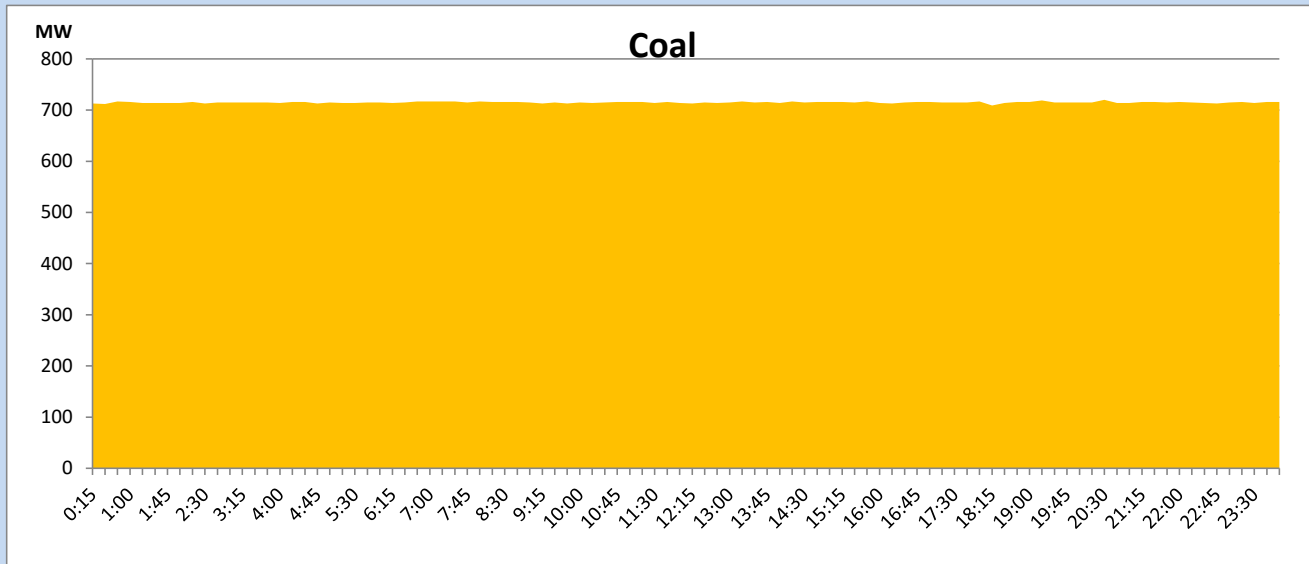
June 1, 2023

Solar and wind data is based on Telemetered Power Stations only



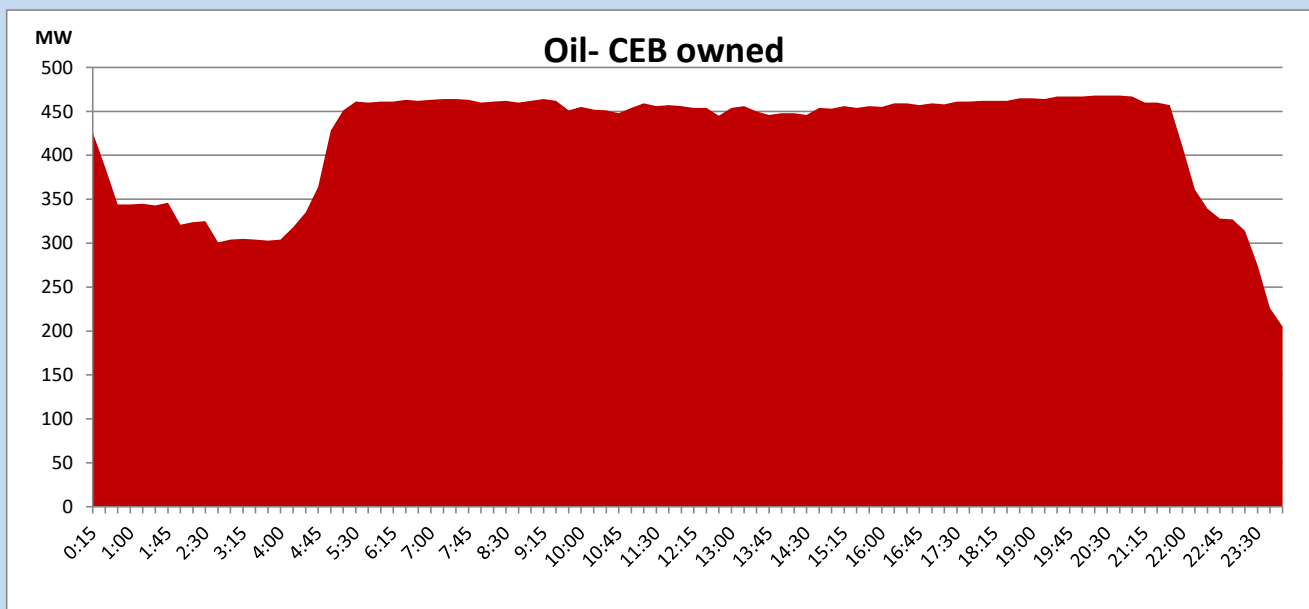
## Coal Generation during

June 1, 2023



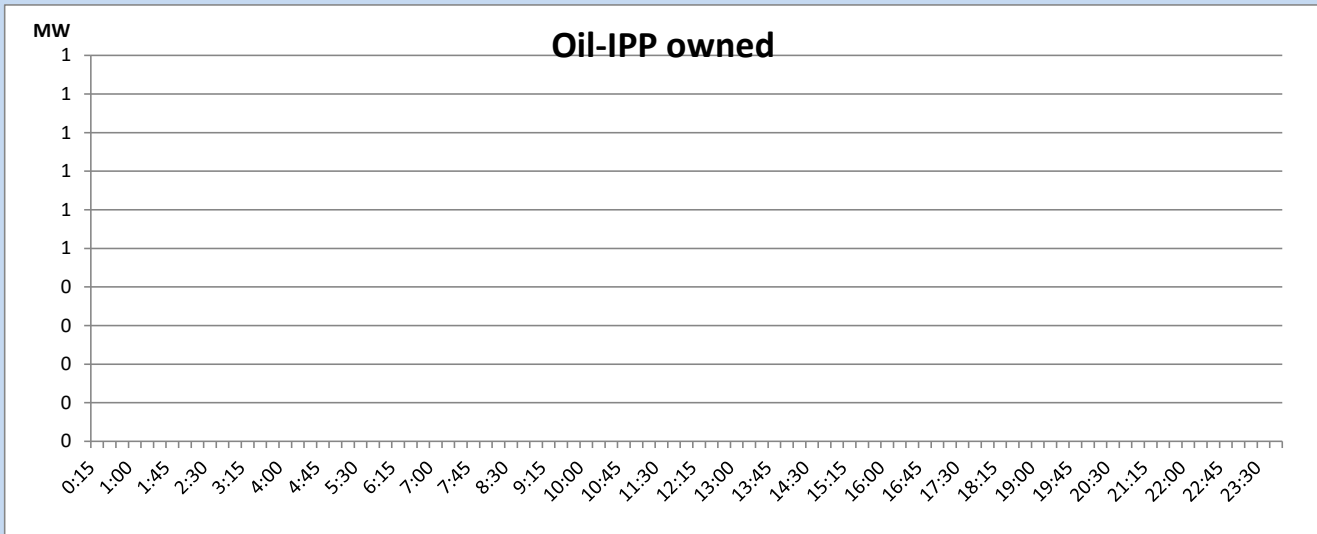
## CEB Oil Plant Generation during

June 1, 2023



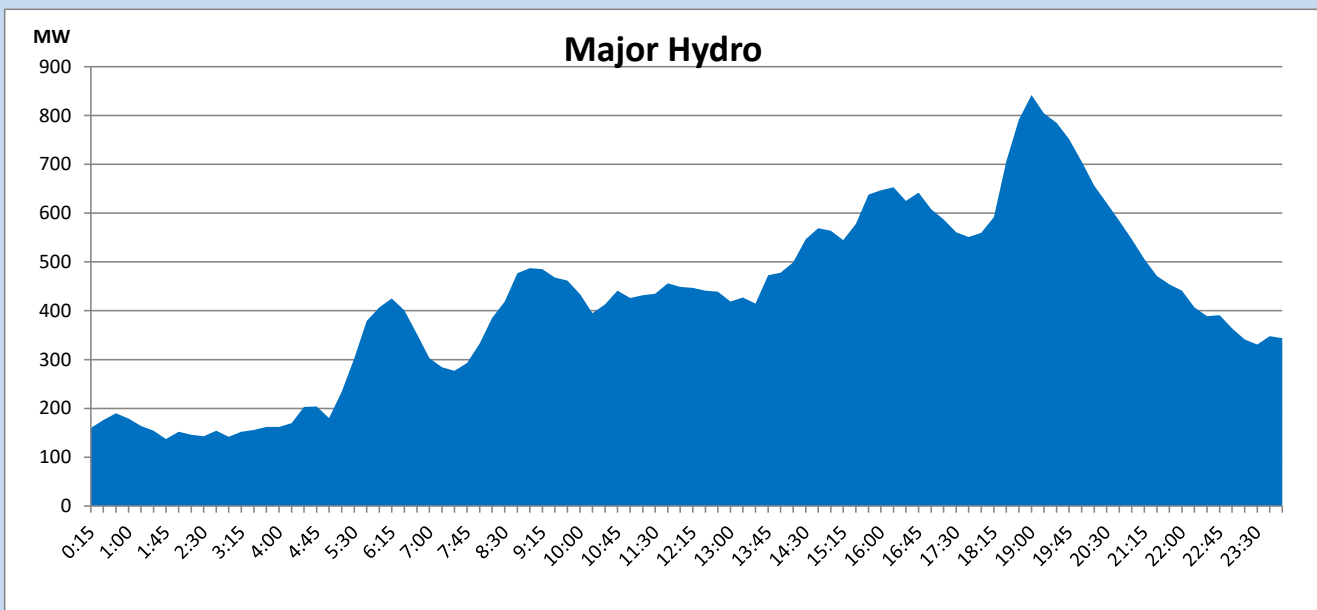
## IPP Oil Plant Generation during

June 1, 2023



## Major Hydro Generation during

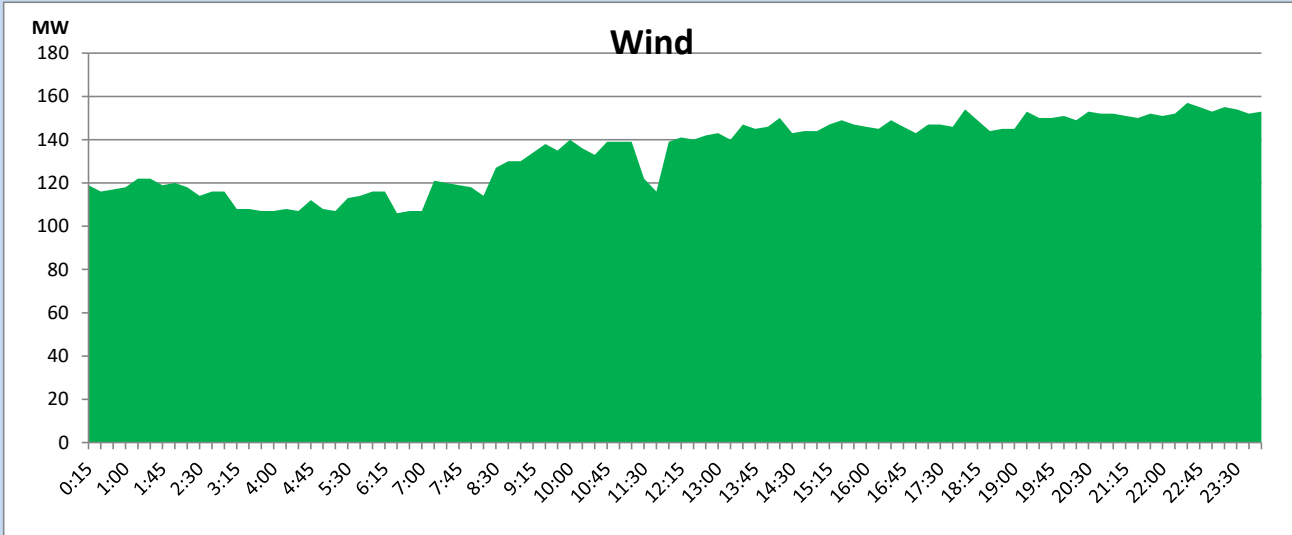
June 1, 2023



## Wind Generation during

June 1, 2023

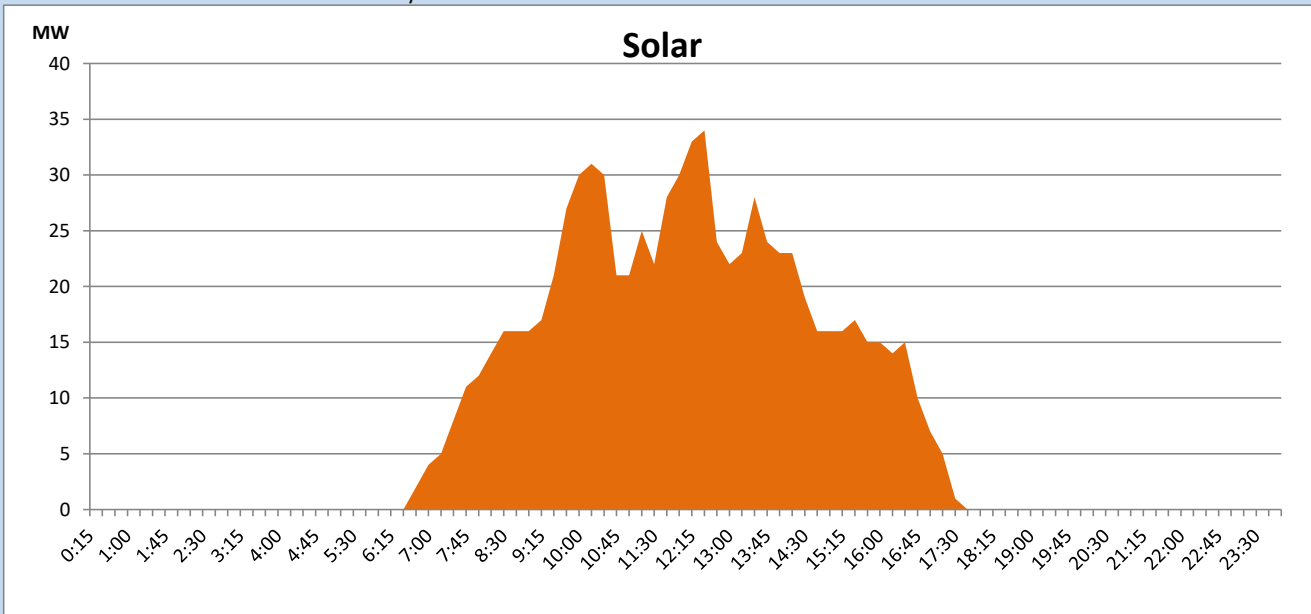
Based on Telemetered Power Stations only



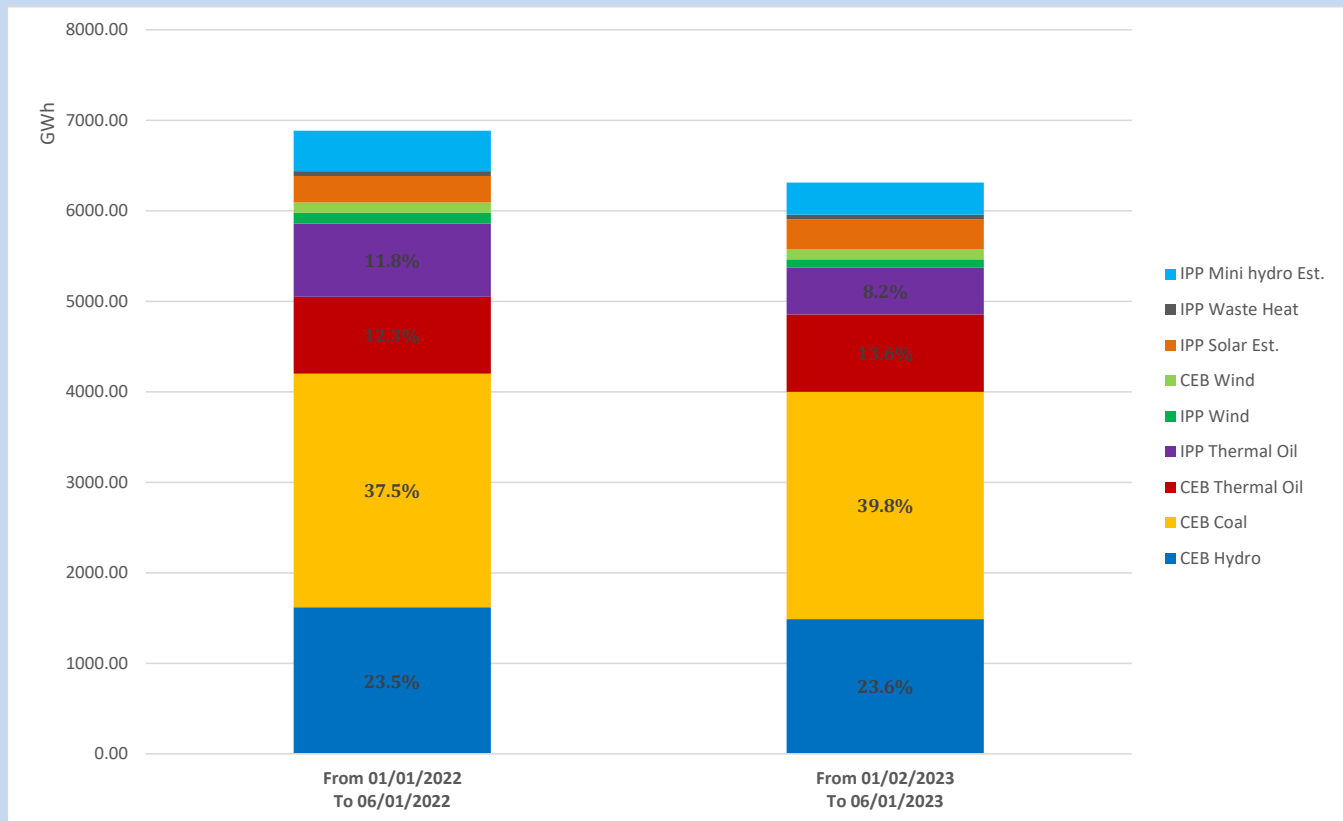
## Solar Generation during

June 1, 2023

Based on Telemetered Power Stations only



## Cumulative Dispatch Comparison with Last Year



The above figures are including contribution from roof top solar, non telemetered solar and mini hydro plants

## Thermal Plant Fuel types

Power Station	Primary Fuel
CEB Thermal	
Sapugaskanda 1	Heavy Fuel
Sapugaskanda 2	Heavy Fuel
Kelanitissa Small Gas Turbines	Auto Diesel
GT 7 - Kelanitissa	Auto Diesel
Kelanitissa CCY	Naphtha or Diesel
Lakvijaya 1	Coal
Lakvijaya 2	Coal
Lakvijaya 3	Coal
Uthuru Janani	Heavy Fuel
Barge CEB	Heavy Fuel
KCCPS -2	Auto Diesel

Power Station	Primary Fuel
Private Thermal	
West Coast	Auto Diesel / Heavy Fuel

## Major Incidents reported during the day

June 1, 2023

- 1) KPS GT 02 was made unavailable at 13:46hrs due to high bearing vibration. KPS GT 02 is yet to resume generation.
- 2) Kosgama - Kolonnawa 132kV cct tripped from both ends at 15:07hrs due to the operation of distance protection. Kosgama - Kolonnawa 132kV cct was normalized at 16:22hrs.
- 3) Polpitiya - Maliboda 132 kV cct tripped from Polpitiya end and Boadland - Maliboda 132 kV cct tripped from Broadland end at 22:33hrs causing Maliboda GSS to be dead.  
Polpitiya - Maliboda 132 kV cct was restored at 23:01 hrs. All affected feeders at Maliboda GSS were restored by 23:05hrs. Boadland - Maliboda 132 kV cct was restored at 23:59hrs.
- 4) Polpitiya - Thulhiriya - Athurugiriya 132 kV cct tripped & AR from Polpitiya and Athurugiriya ends at 23:07 hrs due to the operation of distance protection. At the same time New Polpitiya - Thulhiriya - Athurugiriya 132 kV cct tripped & AR from New Polpitiya and Athurugiriya ends due to the operation of distance protection.
- 5) Kotmale - Biyagama 220 kV cct 02 tripped from Biyagama end and tripped & AR from Kotmale end at 23:07 hrs due to the operation of differential protection. At the same time Biyagama-Kotmale cct 01 tripped & AR from Biyagama end due to the operation of distance protection. Kotmale - Biyagama 220 kV cct 02 was restored at 23:22 hrs.
- 6) Kukule pond spilling started at 02:15hrs