

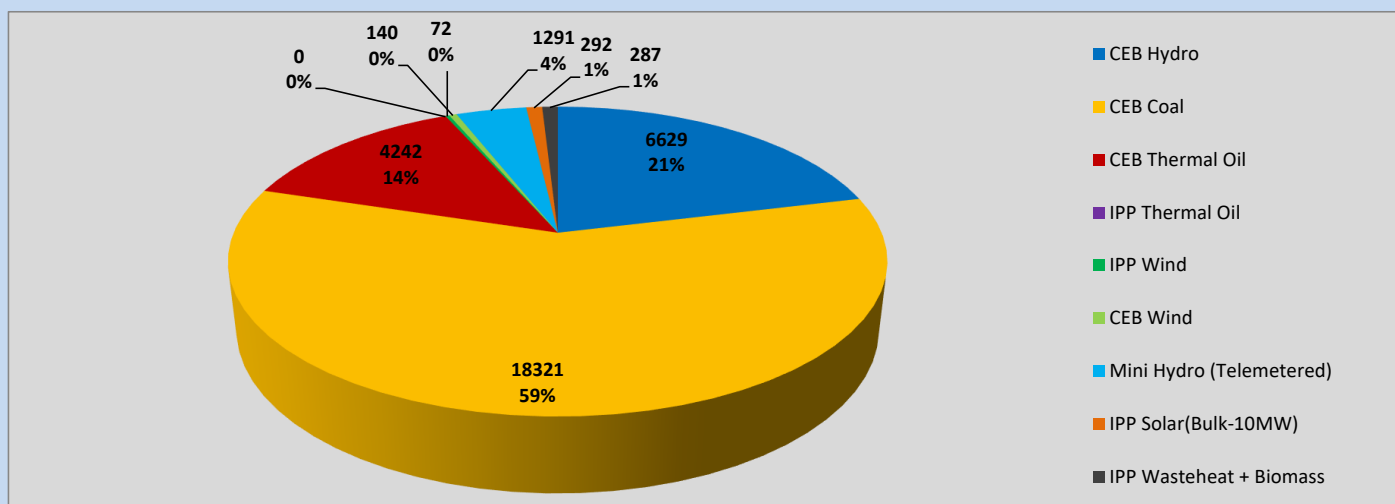
Generation and Reservoirs Statistics

April 30, 2023



PUBLIC UTILITIES COMMISSION OF SRI LANKA

Daily Generation Mix in MWh



Total Generation (Excluding estimated figures) =

31,274 MWh

Estimated figures of CEB generation report

Estimated unserved energy = 0.00 GWh

Estimated Mini Hydro (Non telemetered) = 1089 MWh

Estimated IPP Solar PV (Bulk 1-10MW) = 304 MWh

Estimated Solar Roof Top PV = 1640 MWh

Cumulative Dispatch

Following data excludes the contribution from roof top solar, non telemetered solar and mini hydro plants

For Current Month

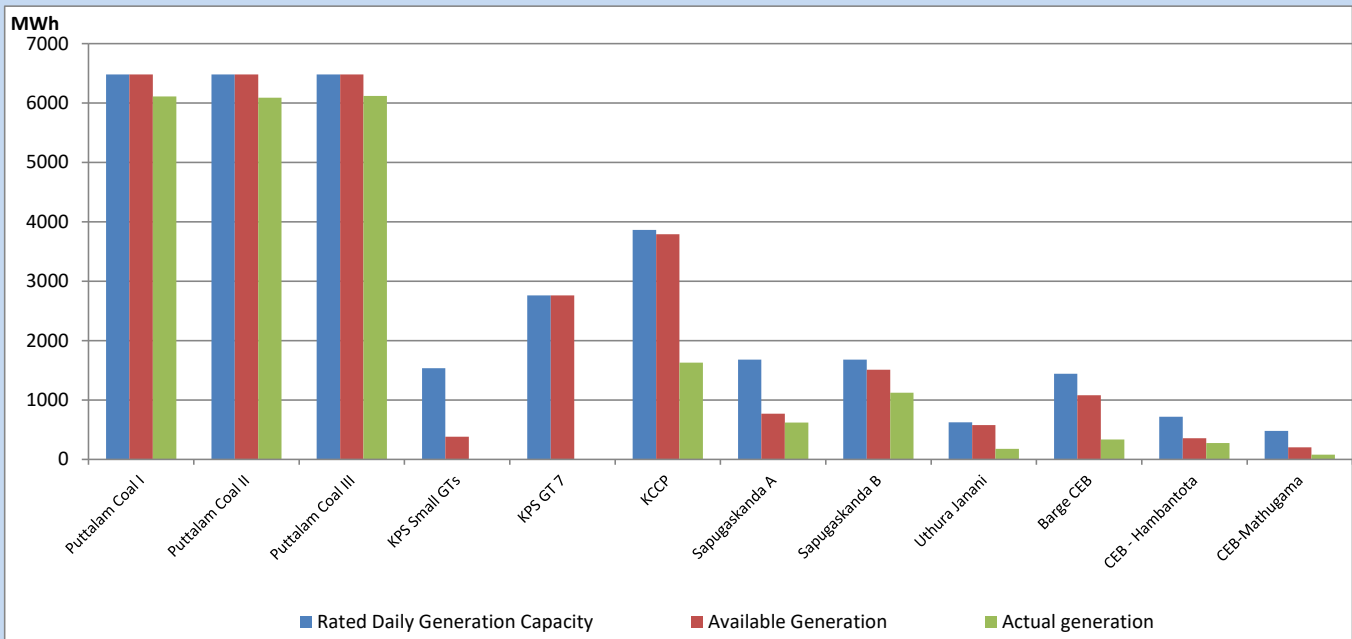
Category	Dispatch (GWh)	
CEB Hydro	280	24.63%
CEB Coal	464	40.81%
CEB Thermal Oil	185	16.26%
IPP Thermal	147	12.95%
SPP Wind	7	0.62%
CEB Wind	10	0.86%
Mini Hydro (Telemetered)	27	2.33%
IPP Solar(Bulk-10MW)	9	0.78%
IPP Wasteheat + BMP	9	0.75%
Total	1,138	

For Current Year

Category	Dispatch (GWh)	
CEB Hydro	1,202	26.38%
CEB Coal	1,987	43.63%
CEB Thermal Oil	655	14.39%
IPP Thermal	418	9.17%
SPP Wind	58	1.27%
CEB Wind	70	1.54%
Mini Hydro (Telemetered)	95	2.09%
IPP Solar(Bulk-10MW)	35	0.76%
IPP Wasteheat	35	0.77%
Total	4,554	

CEB owned Thermal Plant Dispatch

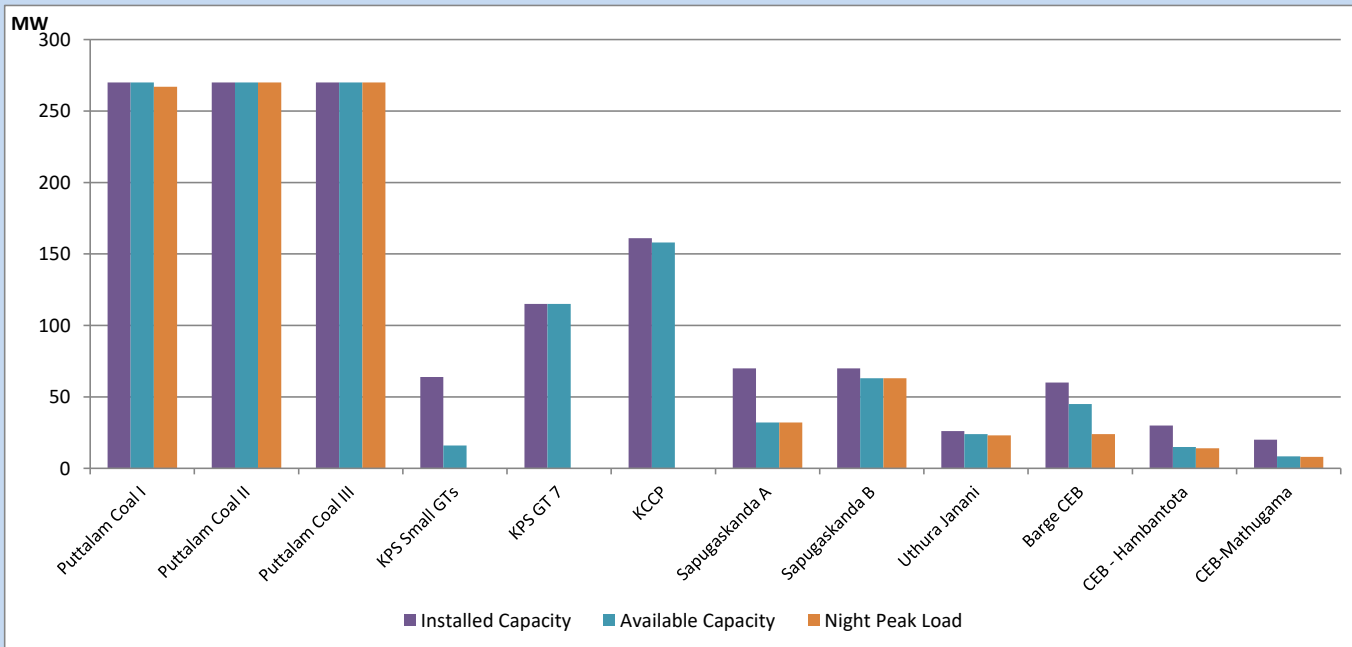
April 30, 2023



Available Generation is estimated based on plant availability at 6.00am on

May 1, 2023

CEB owned Thermal Plant Loading at the Night Peak

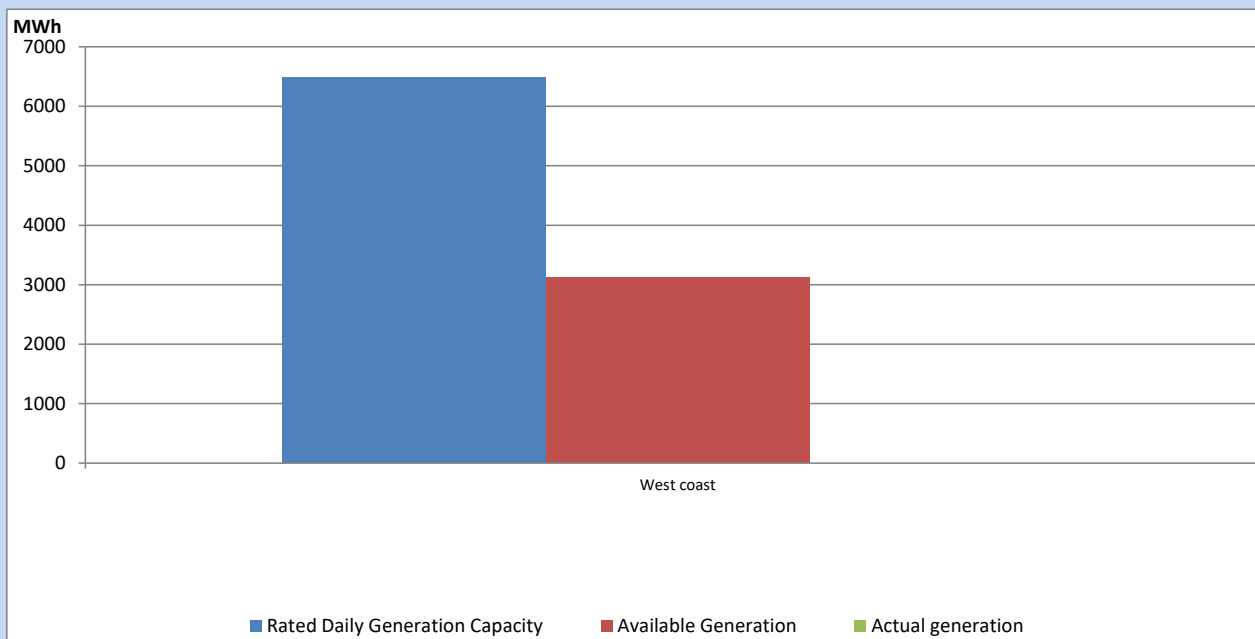


Note- Plant availability is recorded at 6.00 am on

May 1, 2023

IPP owned Thermal Plant Dispatch

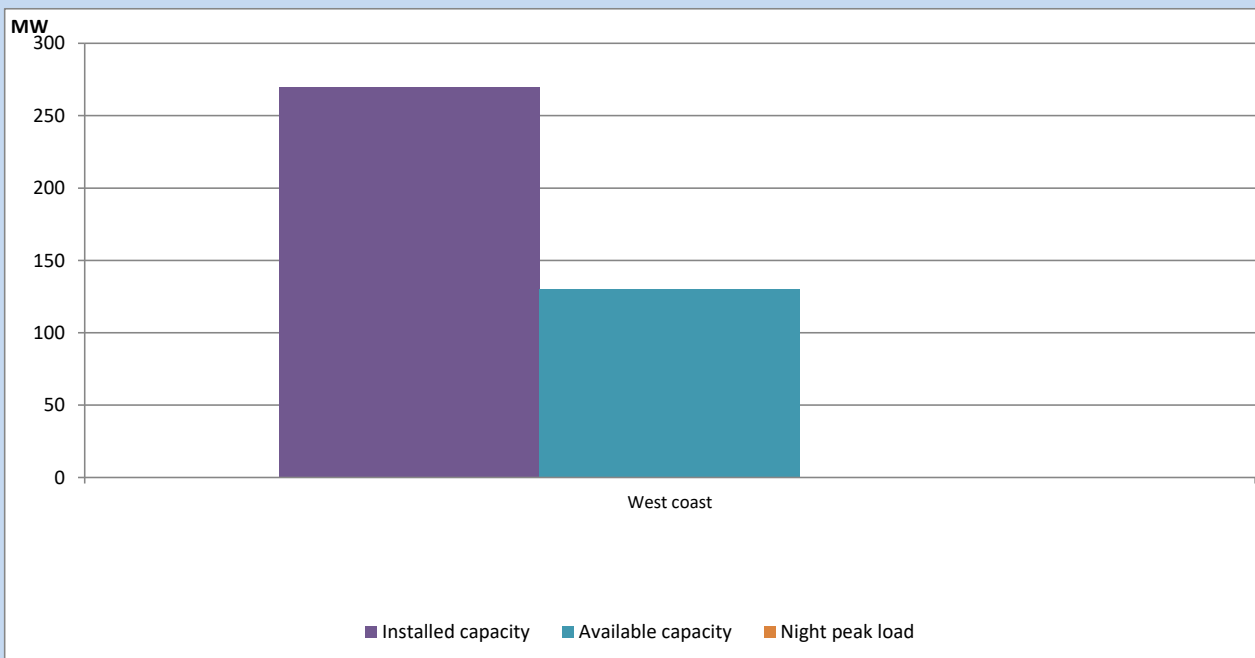
April 30, 2023



Available Generation is estimated based on plant availability at 6.00am on

May 1, 2023

IPP owned Thermal Plant Loading at the Night Peak

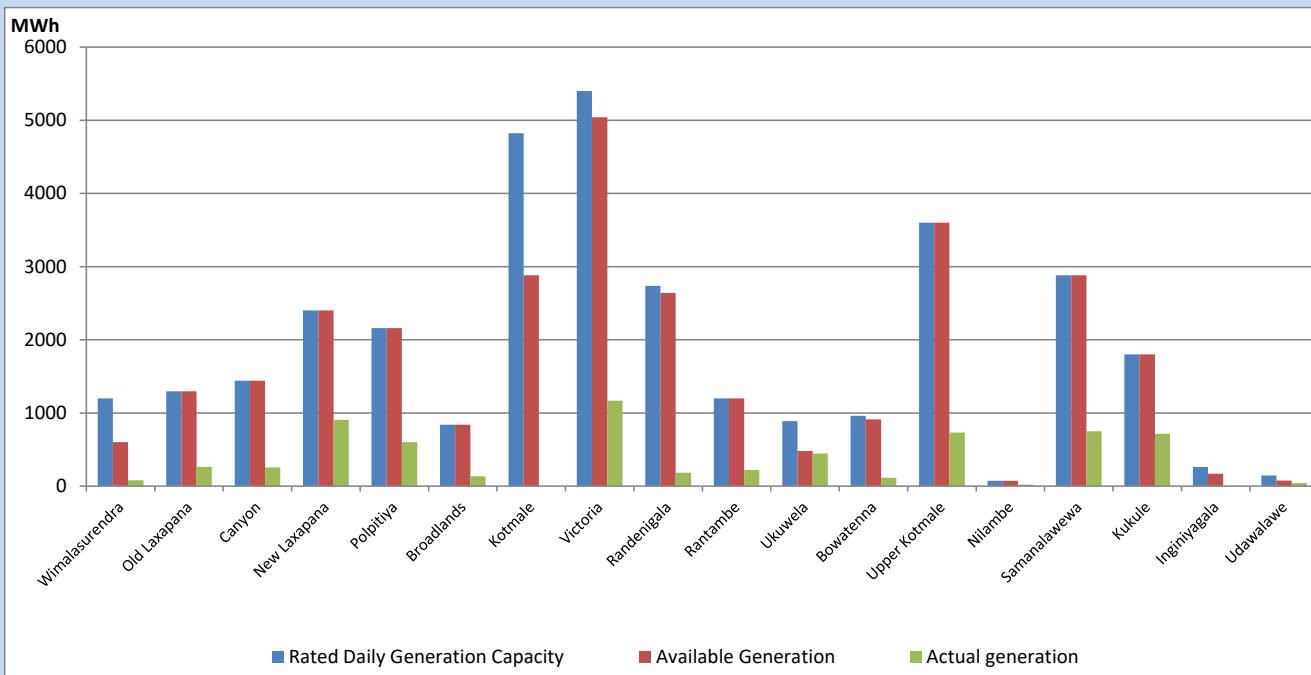


Note- Plant availability is recorded at 6.00 am on

May 1, 2023

Major Hydro Plant Dispatch

April 30, 2023

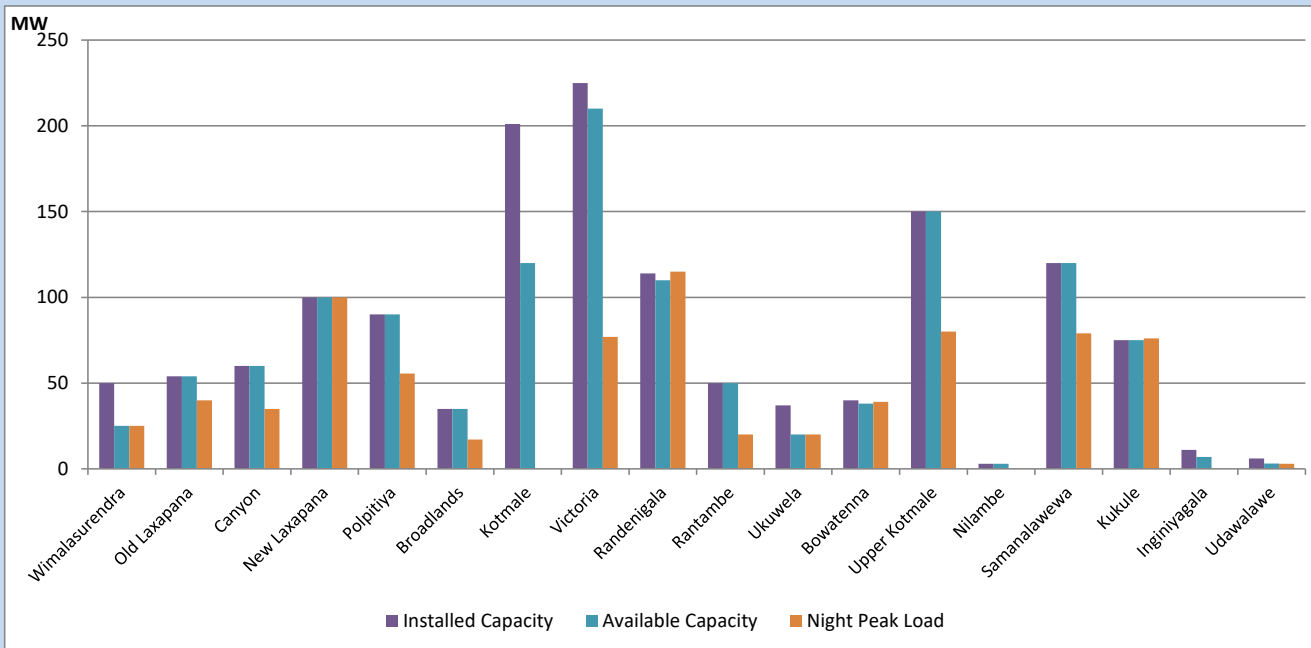


Available Generation is estimated based on plant availability at 6.00am on
Broadlands power plant is operating in the Commissioning Stage

May 1, 2023

Major Hydro Plant Loading at Night Peak

April 30, 2023



Note- Plant availability is recorded at 6.00 am on
Broadlands power plant is operating in the Commissioning Stage

May 1, 2023

Summary of Major Plant performance

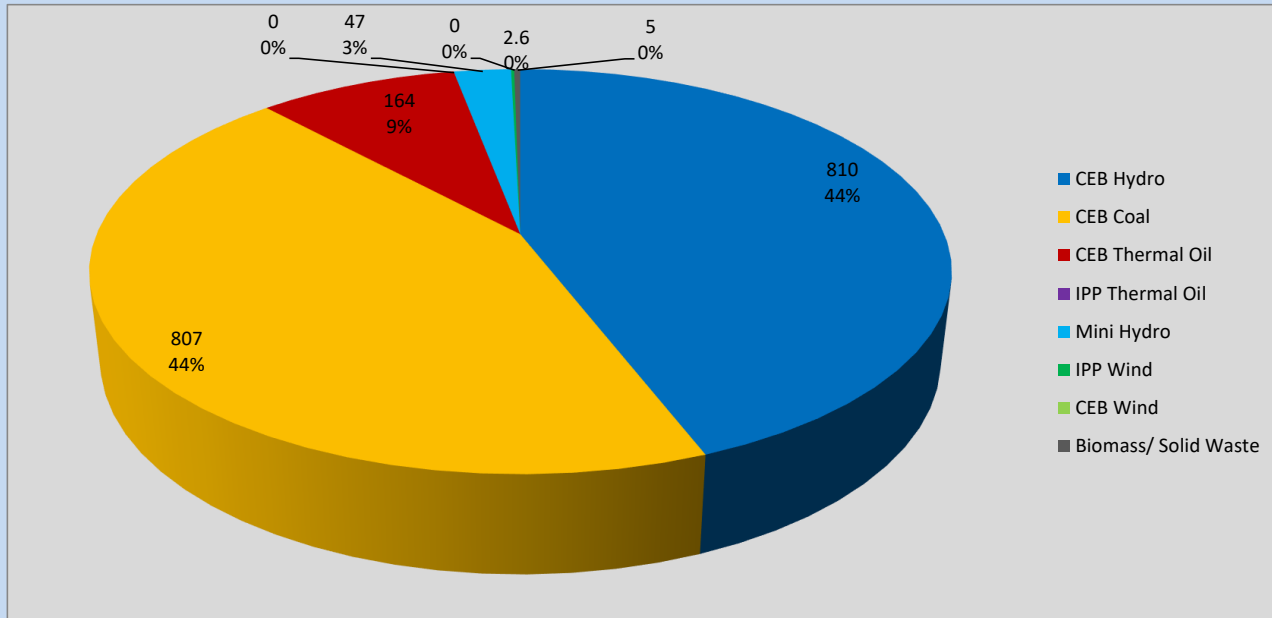
Plant	Installed Capacity	Plant Availability	Night peak Load	Plant Dispatch
	(MW)	(MW)	(MW)	(MWh)
Wimalasurendra	50	25	25	81
Old Laxapana	54	54	40	264
Canyon	60	60	35	256
New Laxapana	100	100	100	904
Polpitiya	90	90	56	601
Broadlands	35	35	17	133
Kotmale	201	120	0	0
Victoria	225	210	77	1,167
Randenigala	114	110	115	184
Rantambe	50	50	20	222
Ukuwela	37	20	20	446
Bowatenna	40	38	39	113
Upper Kotmale	150	150	80	731
Nilambe	3	3	0	22
Samanalawewa	120	120	79	749
Kukule	75	75	76	716
Inginiyagala	11	7	0	0
Udawalawe	6	3	3	40
Puttalam Coal I	270	270	267	6,112
Puttalam Coal II	270	270	270	6,089
Puttalam Coal III	270	270	270	6,120
KPS Small GTs	64	16	0	0
KPS GT 7	115	115	0	0
KCCP	161	158	0	1,630
Sapugaskanda A	70	32	32	619
Sapugaskanda B	70	63	63	1,124
Uthura Janani	26	24	23	178
Barge CEB	60	45	24	335
CEB-Hambantota	30	15	14	276
CEB-Mathugama	20	8	8	80
ACE Matara	24	0	0	0
Asia Power	50	0	0	0
Sojitz Kelanitissa	163	0	0	0
West Coast	270	130	0	0
Nothern Power	36	0	0	0
ACE Embilipitiya	93	0	0	0
Total	3,483	2,686	1,807	31,274

Plant availability is the availability recorded at 6 am on

May 1, 2023

Contribution to the Night Peak in MW

April 30, 2023

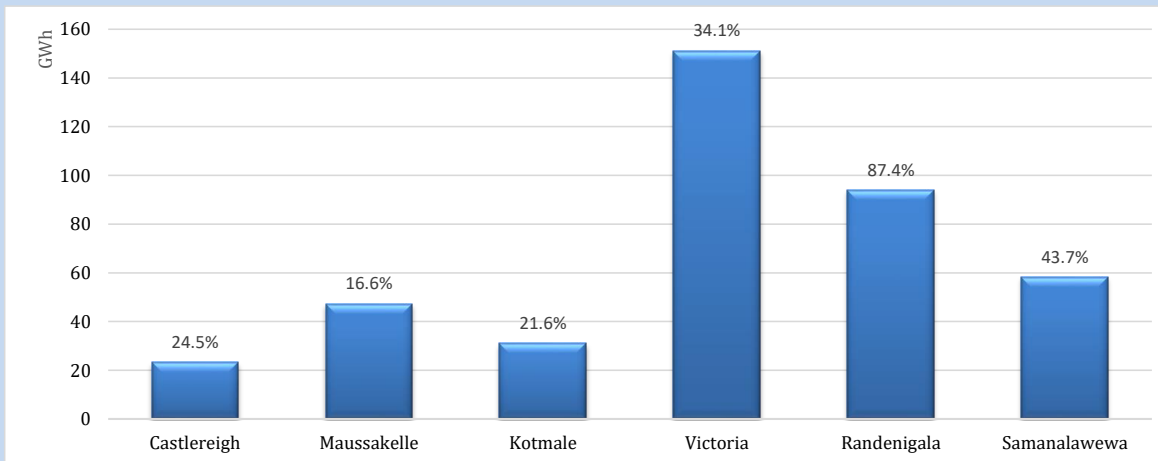


Night Peak*	1,835 MW
Day Peak	1,312 MW
Minimum Demand	1,039 MW

Above figures are excluding contribution from roof top solar, non telemetered solar and mini hydro plants

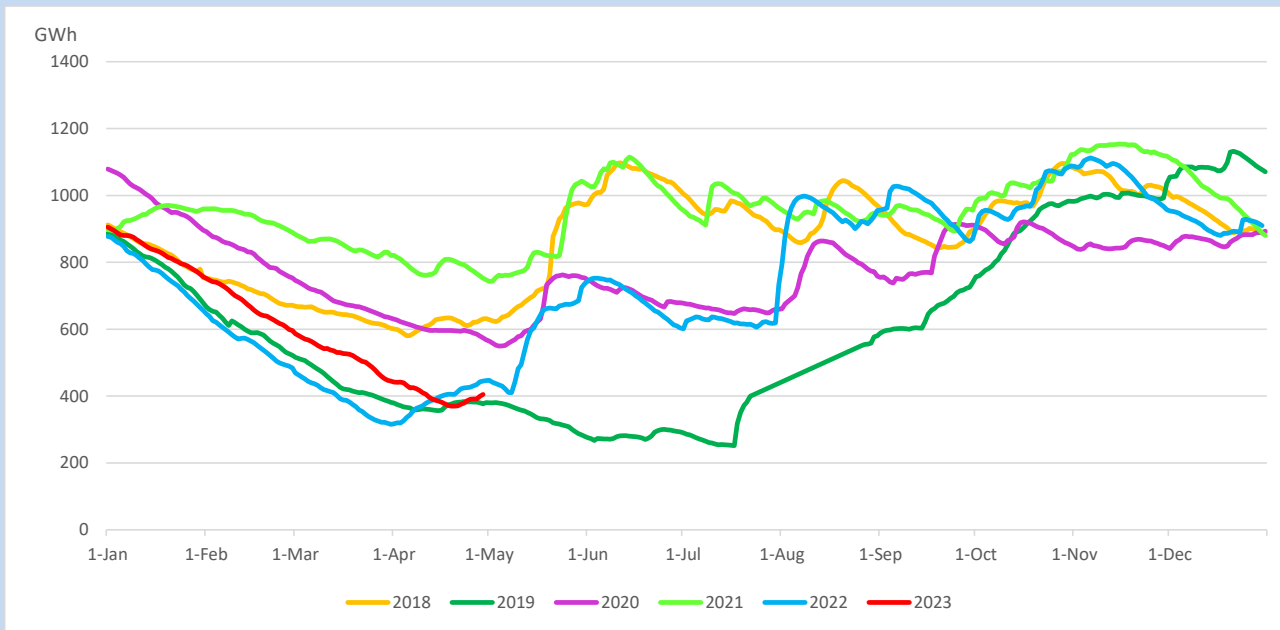
Reservoir Levels -

as at 06.00 Hr on May 1, 2023

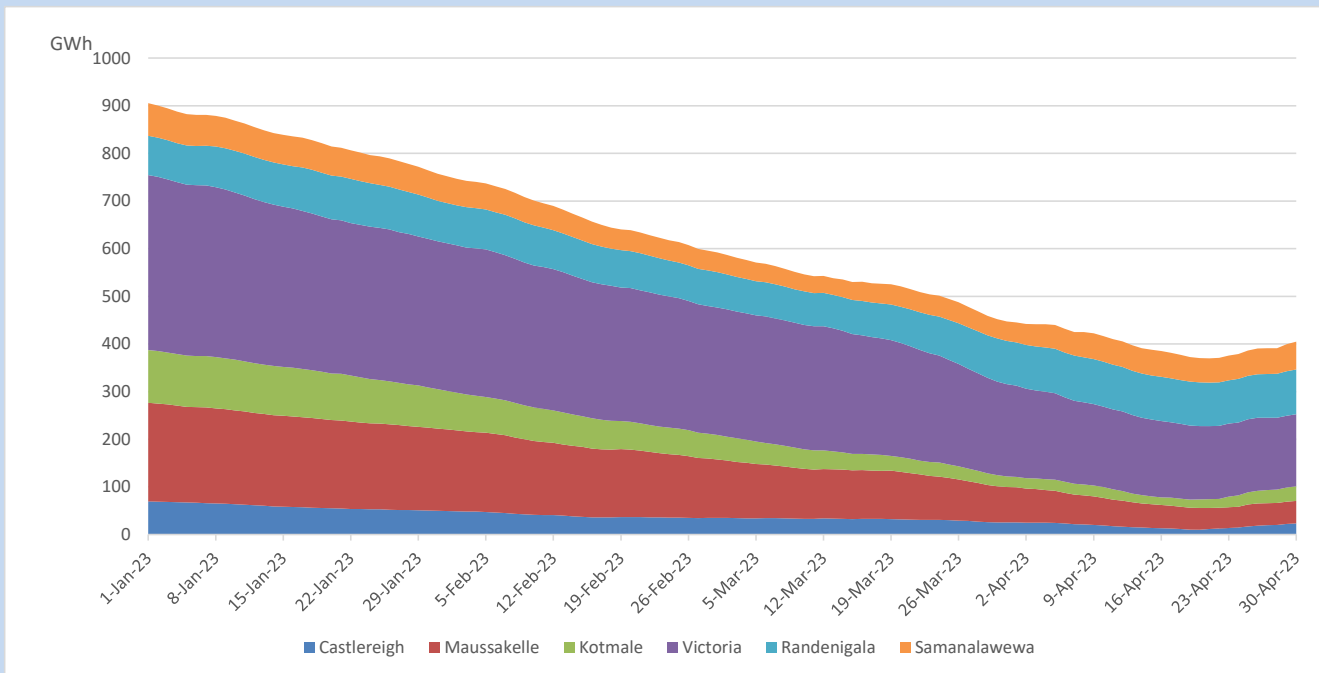


Total Reservoir Level	404.7 GWh
% of Total capacity	33.5%

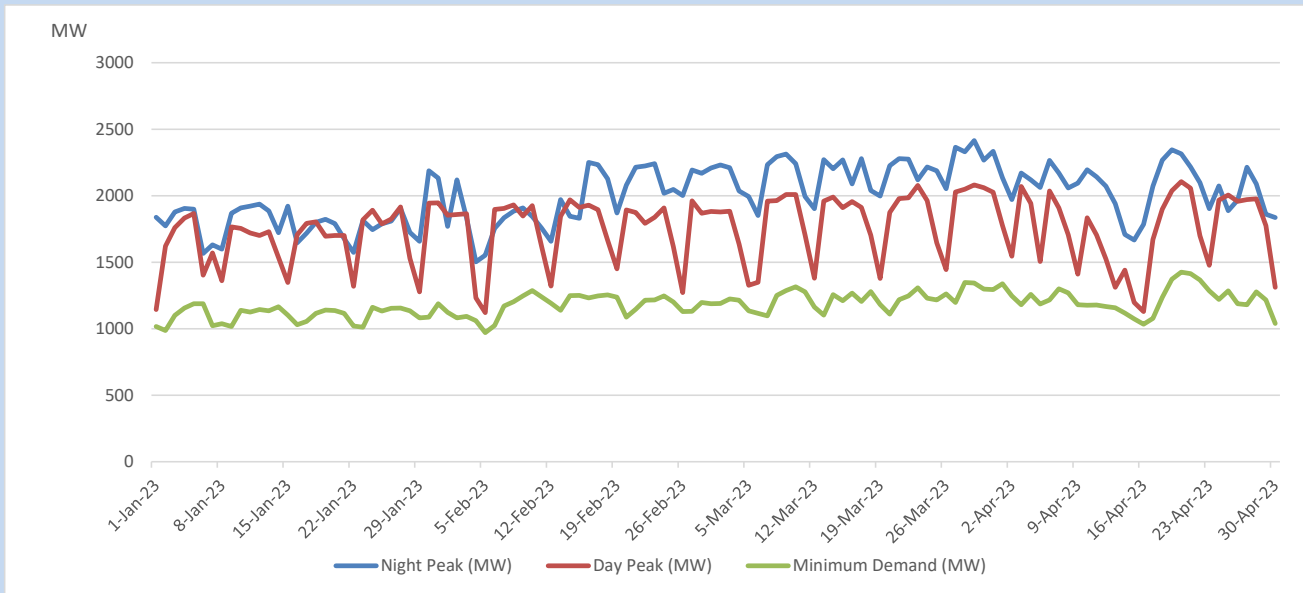
Comparison of Total Reservoir Storage Levels with Past Years



Variation of Major Hydro Reservoir Levels in the current year (GWh)



Variation of Demand during the current year

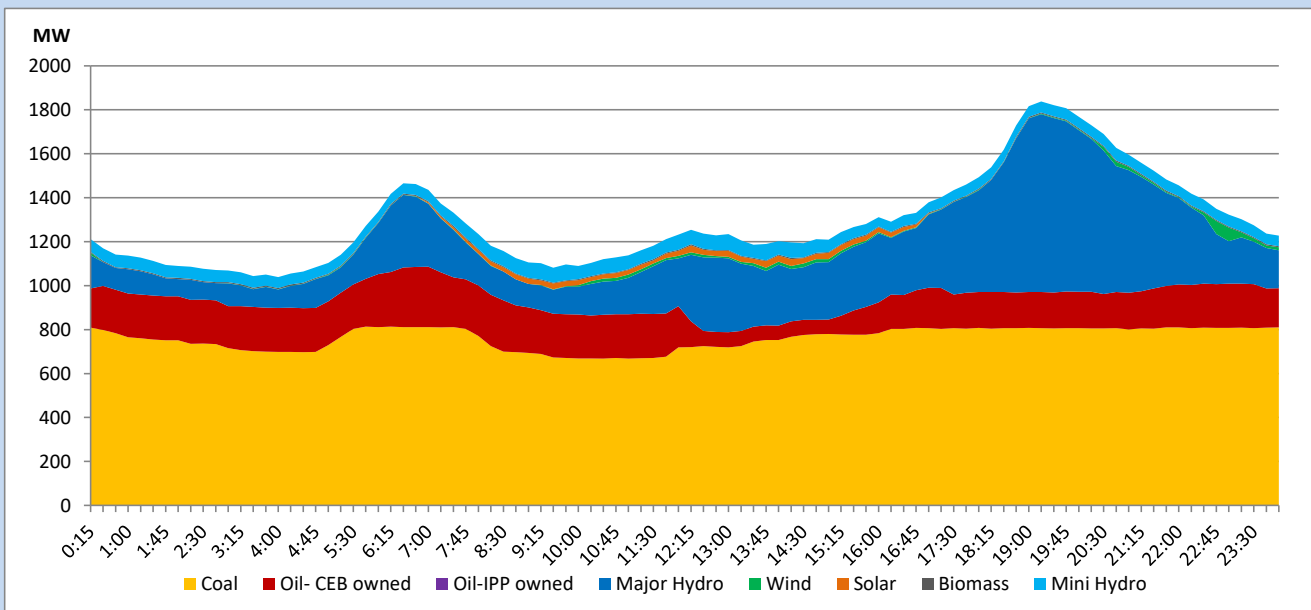


The above figures are excluding contribution from roof top solar, non telemetered solar and mini hydro plants

Daily Load Curve

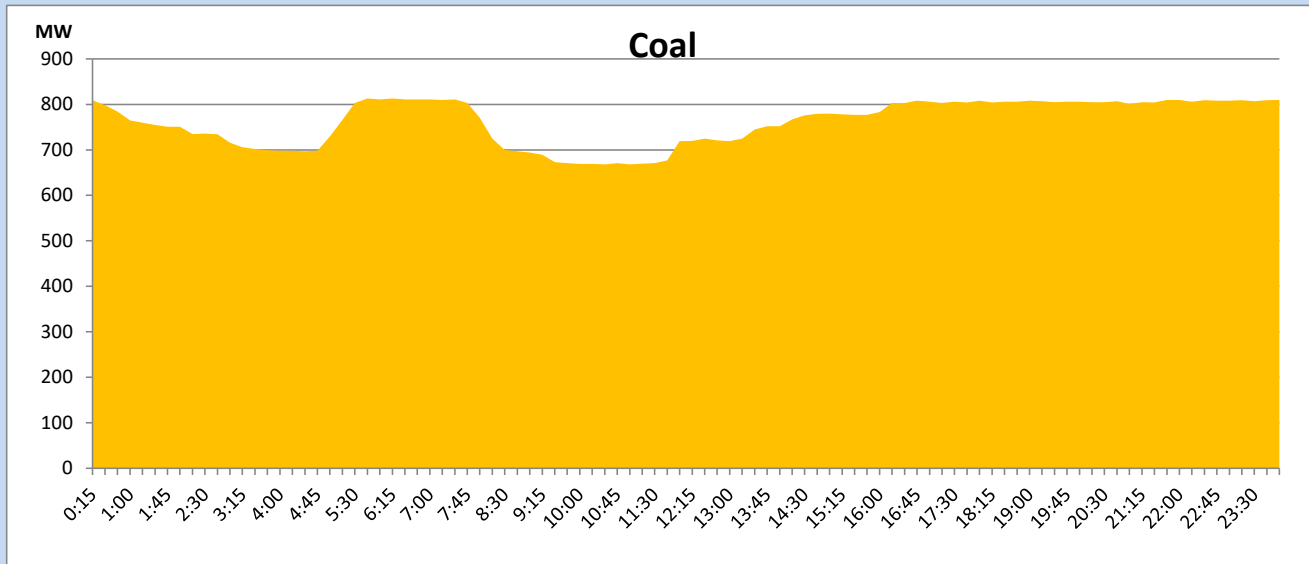
April 30, 2023

Solar and wind data is based on Telemetered Power Stations only



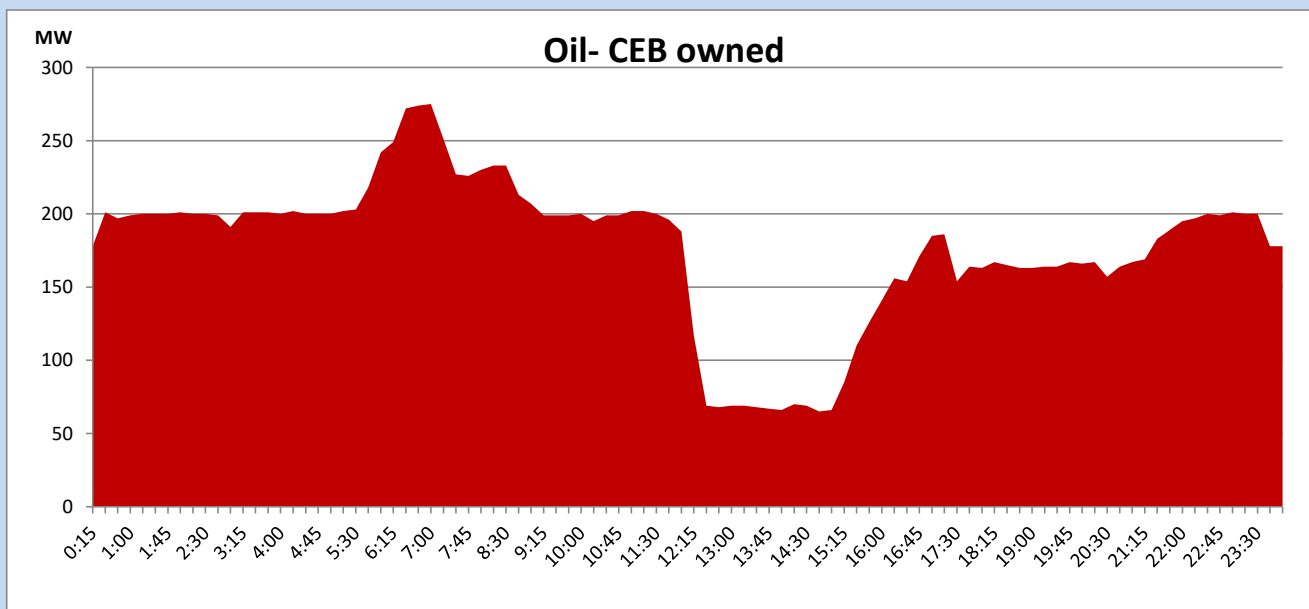
Coal Generation during

April 30, 2023



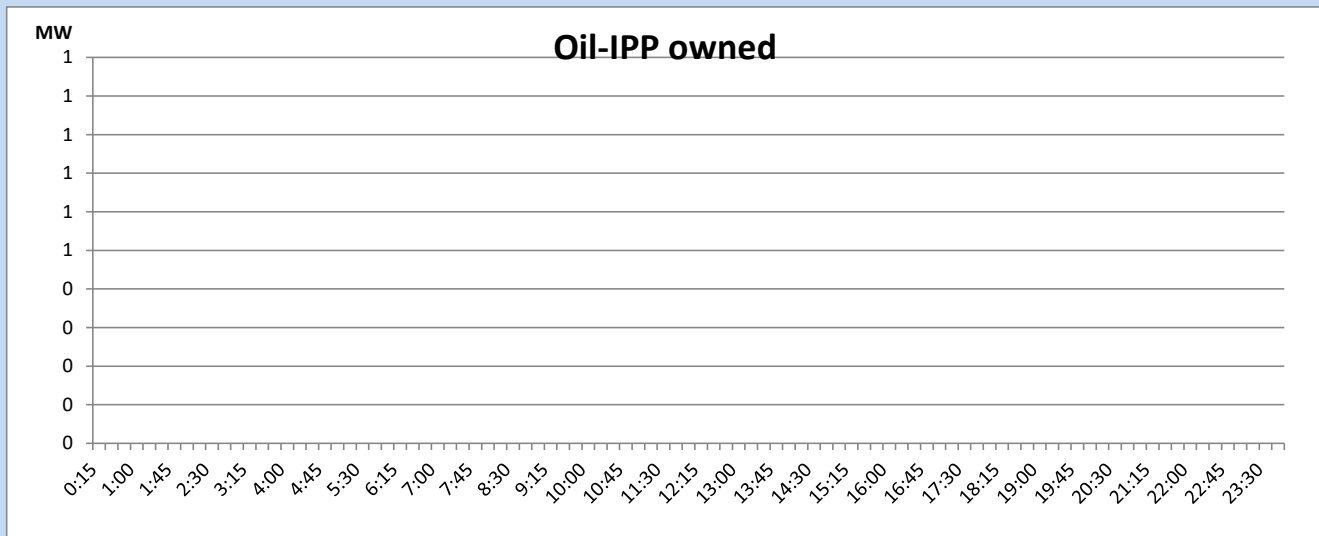
CEB Oil Plant Generation during

April 30, 2023



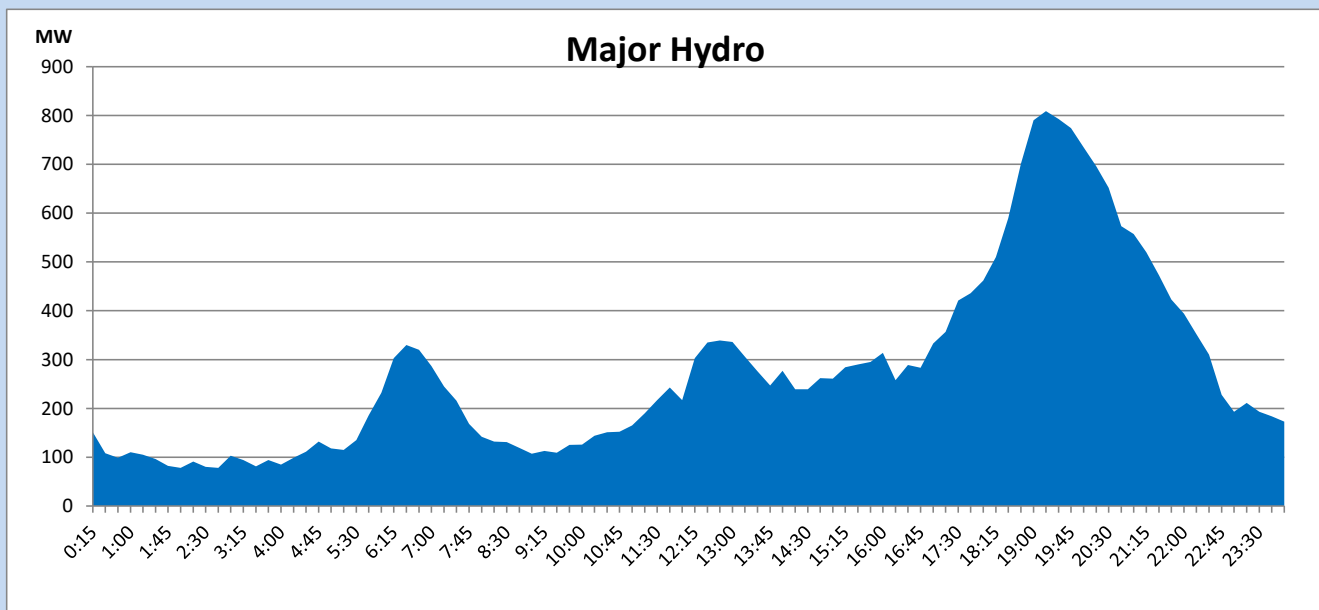
IPP Oil Plant Generation during

April 30, 2023



Major Hydro Generation during

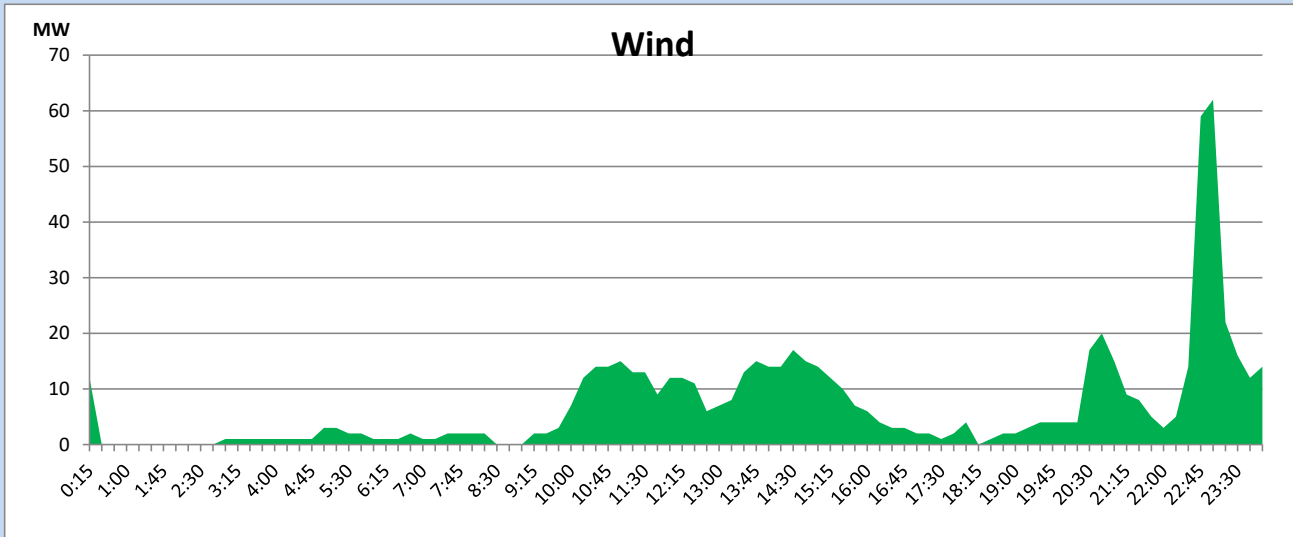
April 30, 2023



Wind Generation during

April 30, 2023

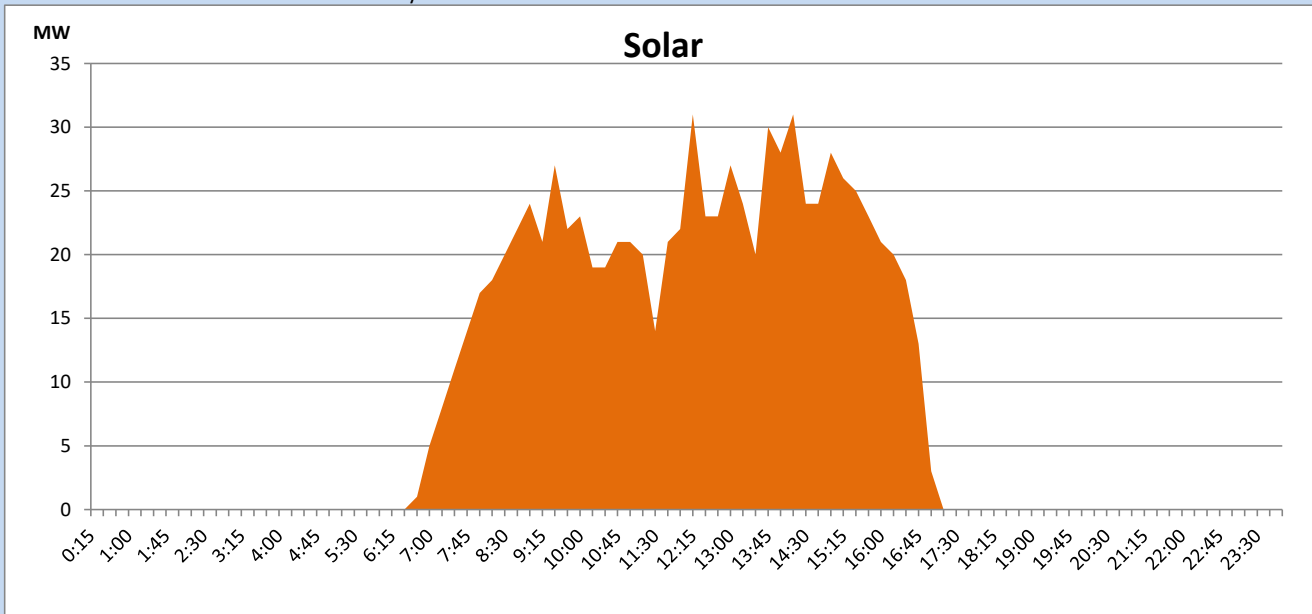
Based on Telemetered Power Stations only



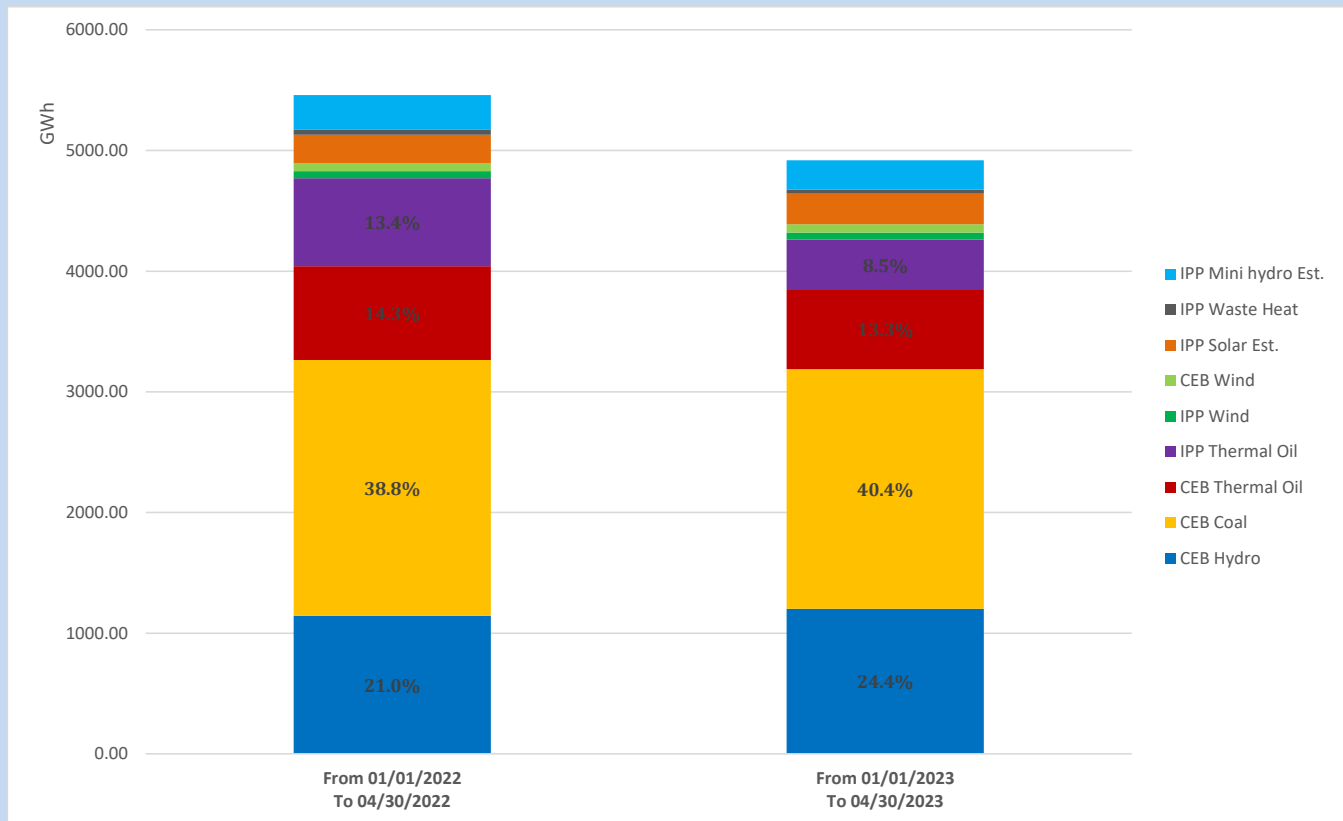
Solar Generation during

April 30, 2023

Based on Telemetered Power Stations only



Cumulative Dispatch Comparison with Last Year



The above figures are including contribution from roof top solar, non telemetered solar and mini hydro plants

Thermal Plant Fuel types

Power Station	Primary Fuel
CEB Thermal	
Sapugaskanda 1	Heavy Fuel
Sapugaskanda 2	Heavy Fuel
Kelanitissa Small Gas Turbines	Auto Diesel
GT 7 - Kelanitissa	Auto Diesel
Kelanitissa CCY	Naphtha or Diesel
Lakvijaya 1	Coal
Lakvijaya 2	Coal
Lakvijaya 3	Coal
Uthuru Janani	Heavy Fuel
Barge CEB	Heavy Fuel

Power Station	Primary Fuel
Private Thermal	
West Coast	Auto Diesel / Heavy Fuel

Major Incidents reported during the day

April 30, 2023

- 1) Kosgama – Polpitiya 132kV cct. and Seethawaka – Broadland 132kV cct. were tripped and A/R at 15:39hrs due to the operation of distance protection.
- 2) Barge Unit 01 made forced shutdown at 17:09 due to the blast of the jacket water bellow. Barge unit 01 resumed generation at 22:30hrs.
- 3) Athurugiriya 33kV B/S 02 which de-energized on 29.04.23, energized at 20:43hrs.
- 4) Old Habarana - New Habarana 132kV cct tripped and A/R only from Old Habarana end at 01:02 (01.05.23).