

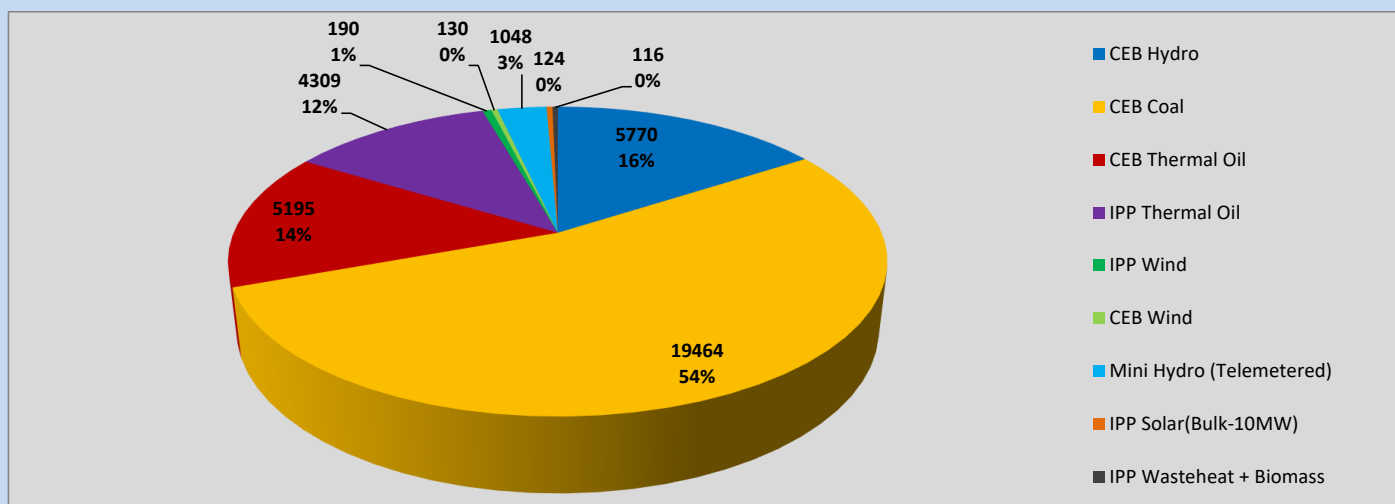
Generation and Reservoirs Statistics

April 29, 2023



PUBLIC UTILITIES COMMISSION OF SRI LANKA

Daily Generation Mix in MWh



Total Generation (Excluding estimated figures) =

36,346 MWh

Estimated figures of CEB generation report

Estimated unserved energy = 0.00 GWh

Estimated Mini Hydro (Non telemetered) = 1332 MWh

Estimated IPP Solar PV (Bulk 1-10MW) = 304 MWh

Estimated Solar Roof Top PV = 1640 MWh

Cumulative Dispatch

Following data excludes the contribution from roof top solar, non telemetered solar and mini hydro plants

For Current Month

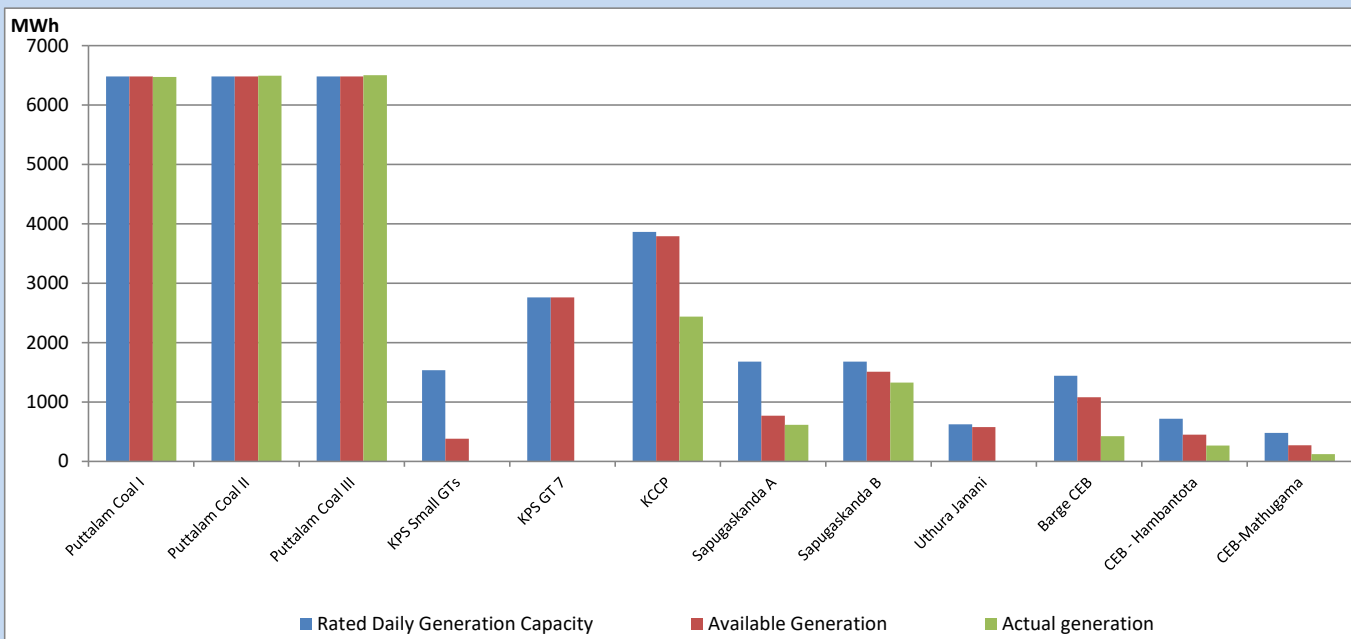
Category	Dispatch (GWh)	
CEB Hydro	274	24.73%
CEB Coal	446	40.31%
CEB Thermal Oil	181	16.34%
IPP Thermal	147	13.32%
SPP Wind	7	0.63%
CEB Wind	10	0.88%
Mini Hydro (Telemetered)	25	2.28%
IPP Solar(Bulk-10MW)	9	0.78%
IPP Wasteheat + BMP	8	0.75%
Total	1,107	

For Current Year

Category	Dispatch (GWh)	
CEB Hydro	1,195	26.42%
CEB Coal	1,969	43.53%
CEB Thermal Oil	651	14.39%
IPP Thermal	418	9.23%
SPP Wind	58	1.28%
CEB Wind	70	1.55%
Mini Hydro (Telemetered)	94	2.08%
IPP Solar(Bulk-10MW)	34	0.76%
IPP Wasteheat	35	0.76%
Total	4,523	

CEB owned Thermal Plant Dispatch

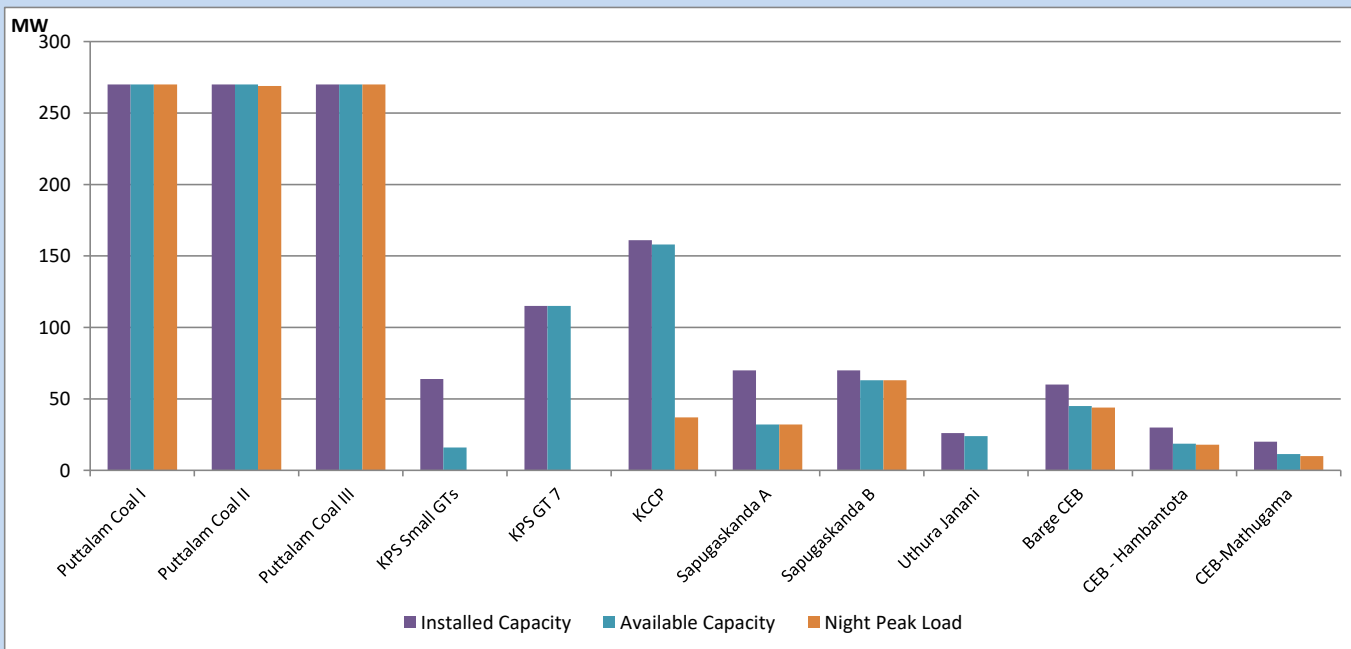
April 29, 2023



Available Generation is estimated based on plant availability at 6.00am on

April 30, 2023

CEB owned Thermal Plant Loading at the Night Peak

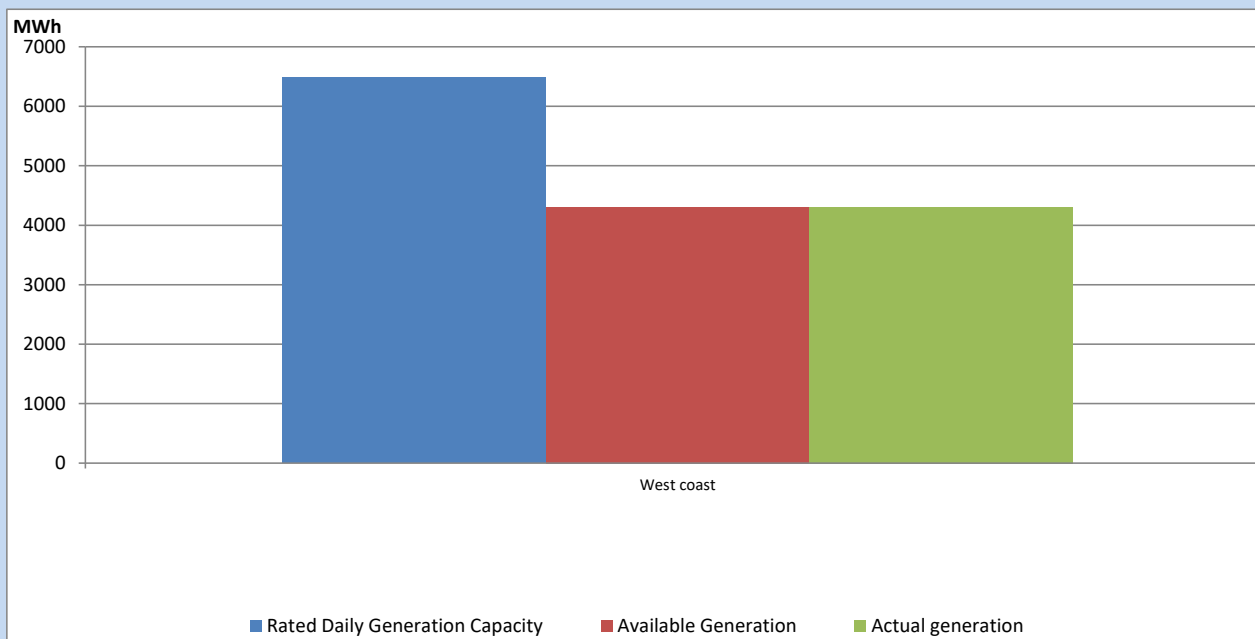


Note- Plant availability is recorded at 6.00 am on

April 30, 2023

IPP owned Thermal Plant Dispatch

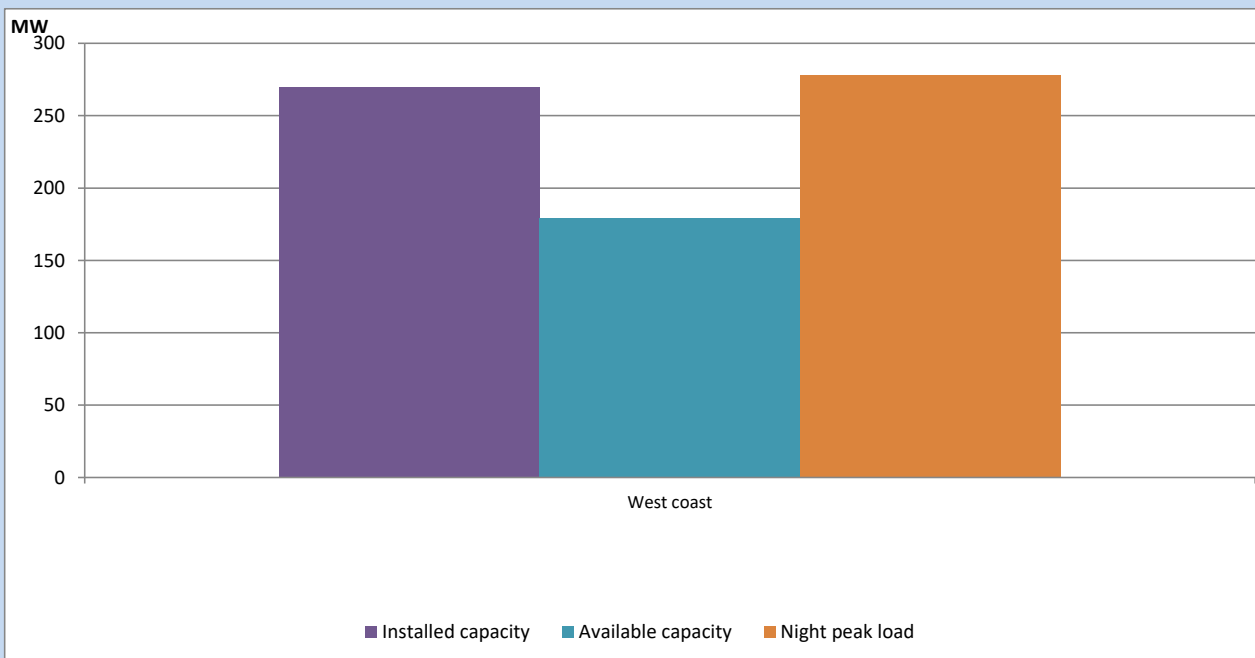
April 29, 2023



Available Generation is estimated based on plant availability at 6.00am on

April 30, 2023

IPP owned Thermal Plant Loading at the Night Peak

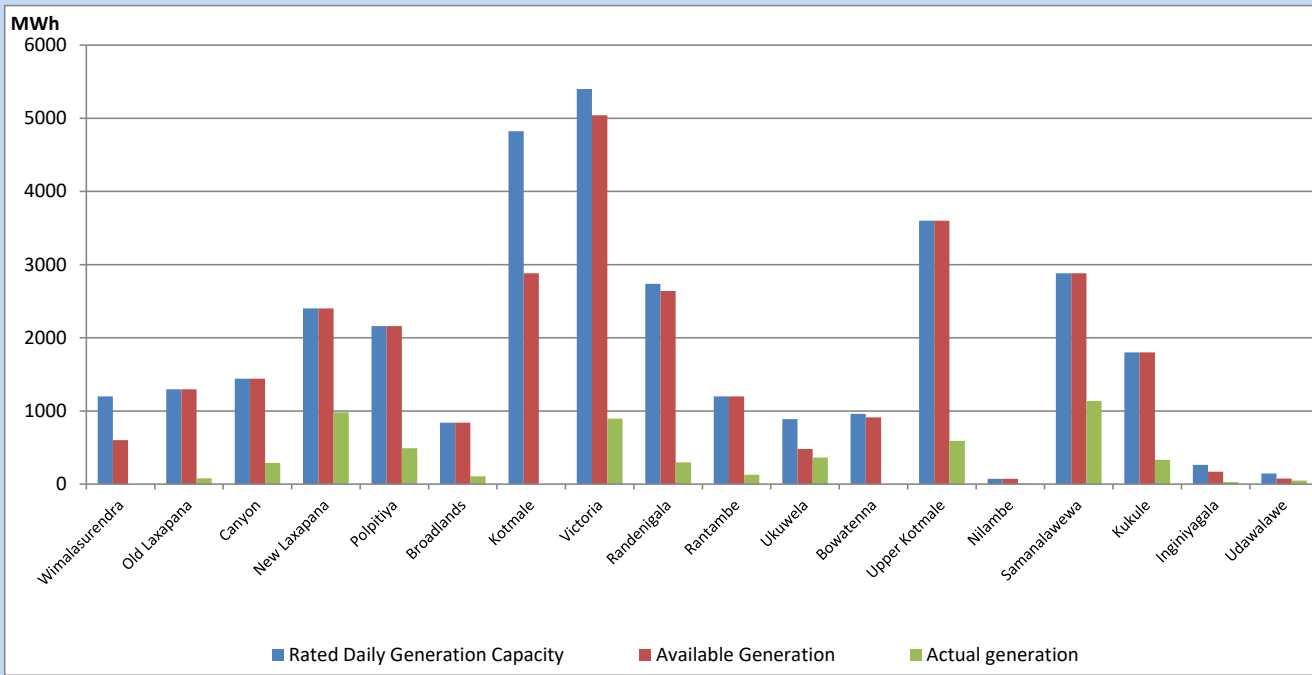


Note- Plant availability is recorded at 6.00 am on

April 30, 2023

Major Hydro Plant Dispatch

April 29, 2023

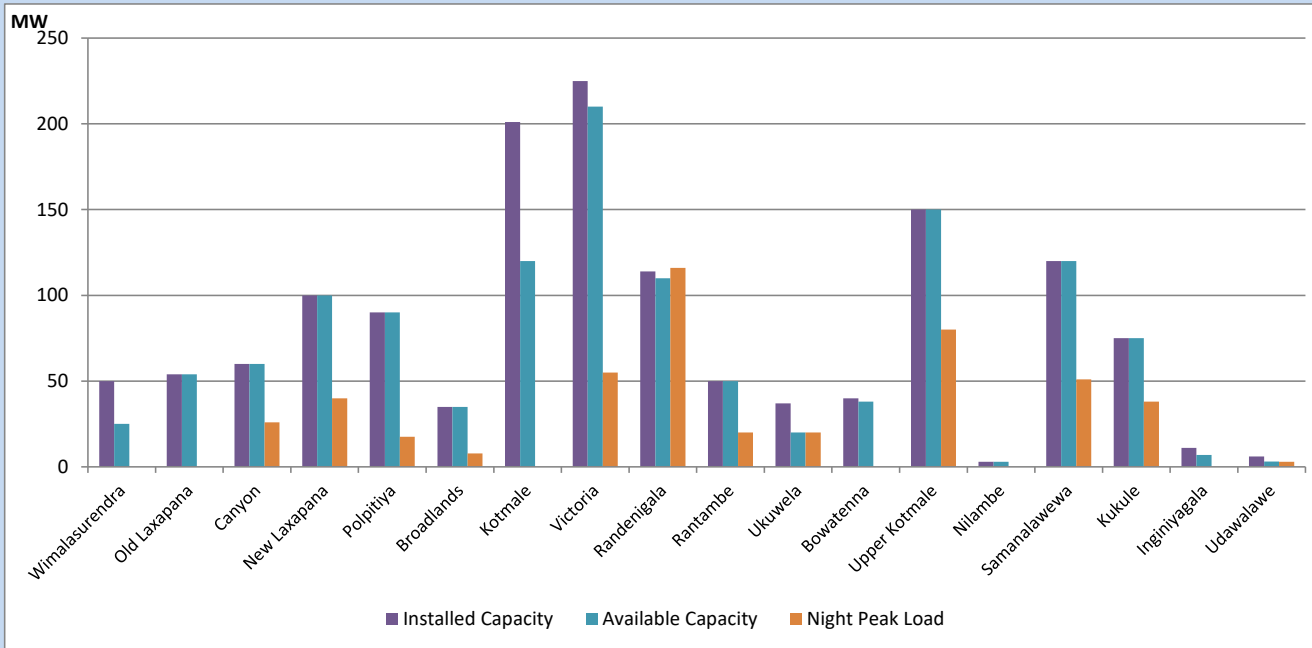


Available Generation is estimated based on plant availability at 6.00am on
Broadlands power plant is operating in the Commissioning Stage

April 30, 2023

Major Hydro Plant Loading at Night Peak

April 29, 2023



Note- Plant availability is recorded at 6.00 am on
Broadlands power plant is operating in the Commissioning Stage

April 30, 2023

Summary of Major Plant performance

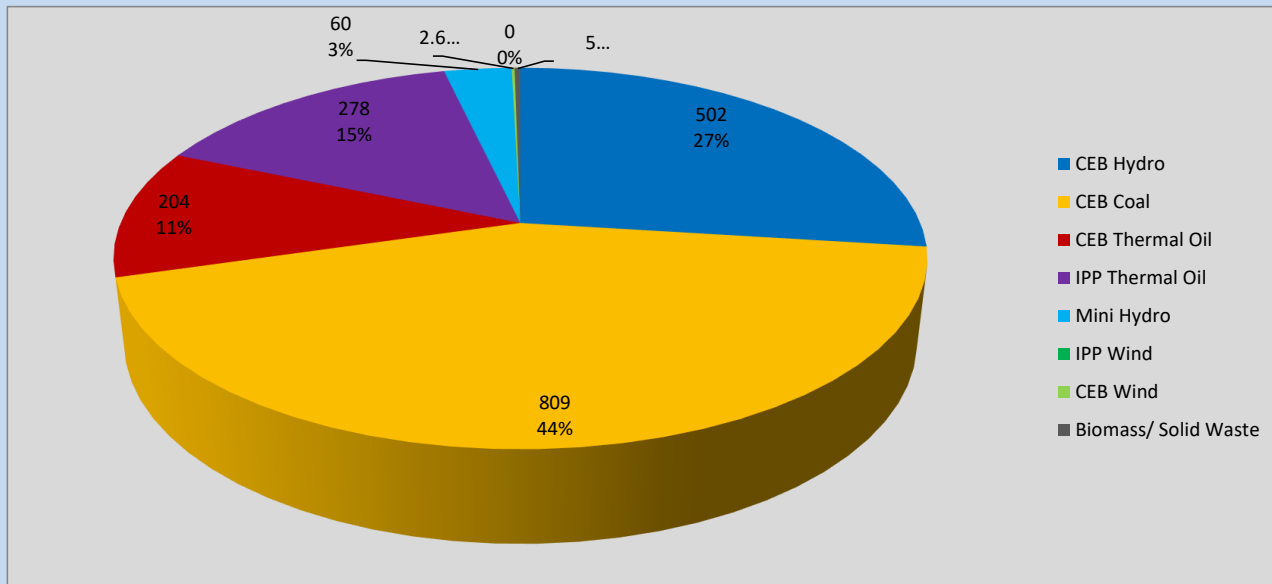
Plant	Installed Capacity	Plant Availability	Night peak Load	Plant Dispatch
	(MW)	(MW)	(MW)	(MWh)
Wimalasurendra	50	25	0	0
Old Laxapana	54	54	0	78
Canyon	60	60	26	290
New Laxapana	100	100	40	980
Polpitiya	90	90	18	490
Broadlands	35	35	8	106
Kotmale	201	120	0	0
Victoria	225	210	55	895
Randenigala	114	110	116	298
Rantambe	50	50	20	129
Ukuwela	37	20	20	364
Bowatenna	40	38	0	0
Upper Kotmale	150	150	80	590
Nilambe	3	3	0	11
Samanalawewa	120	120	51	1,136
Kukule	75	75	38	330
Inginiyagala	11	7	0	26
Udawalawe	6	3	3	47
Puttalam Coal I	270	270	270	6,471
Puttalam Coal II	270	270	269	6,492
Puttalam Coal III	270	270	270	6,501
KPS Small GTs	64	16	0	0
KPS GT 7	115	115	0	0
KCCP	161	158	37	2,437
Sapugaskanda A	70	32	32	617
Sapugaskanda B	70	63	63	1,328
Uthura Janani	26	24	0	0
Barge CEB	60	45	44	426
CEB-Hambantota	30	19	18	266
CEB-Mathugama	20	11	10	121
ACE Matara	24	0	0	0
Asia Power	50	0	0	0
Sojitz Kelanitissa	163	0	0	0
West Coast	270	180	278	4,309
Nothern Power	36	0	0	0
ACE Embilipitiya	93	0	0	0
Total	3,483	2,743	1,833	36,346

Plant availability is the availability recorded at 6 am on

April 30, 2023

Contribution to the Night Peak in MW

April 29, 2023

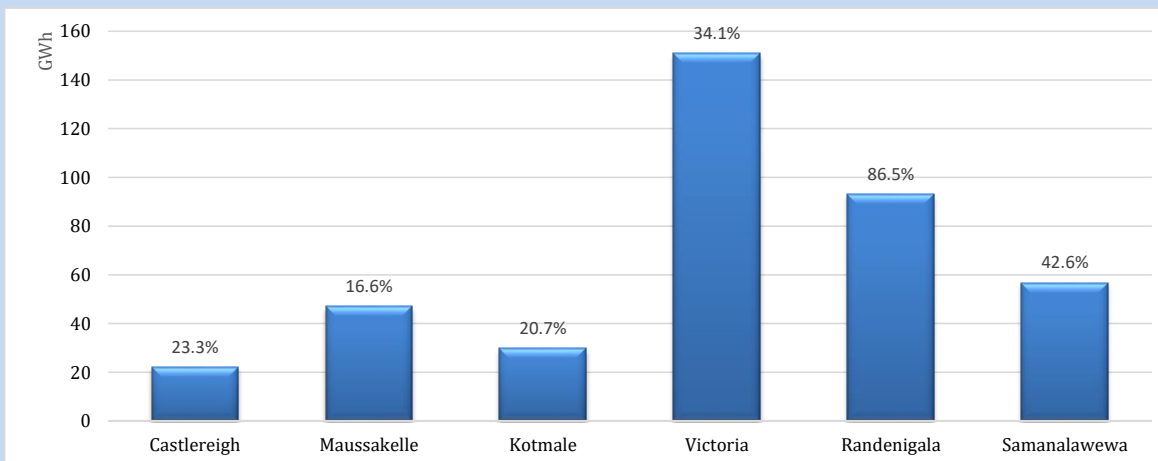


Night Peak*	1,861 MW
Day Peak	1,775 MW
Minimum Demand	1,217 MW

Above figures are excluding contribution from roof top solar, non telemetered solar and mini hydro plants

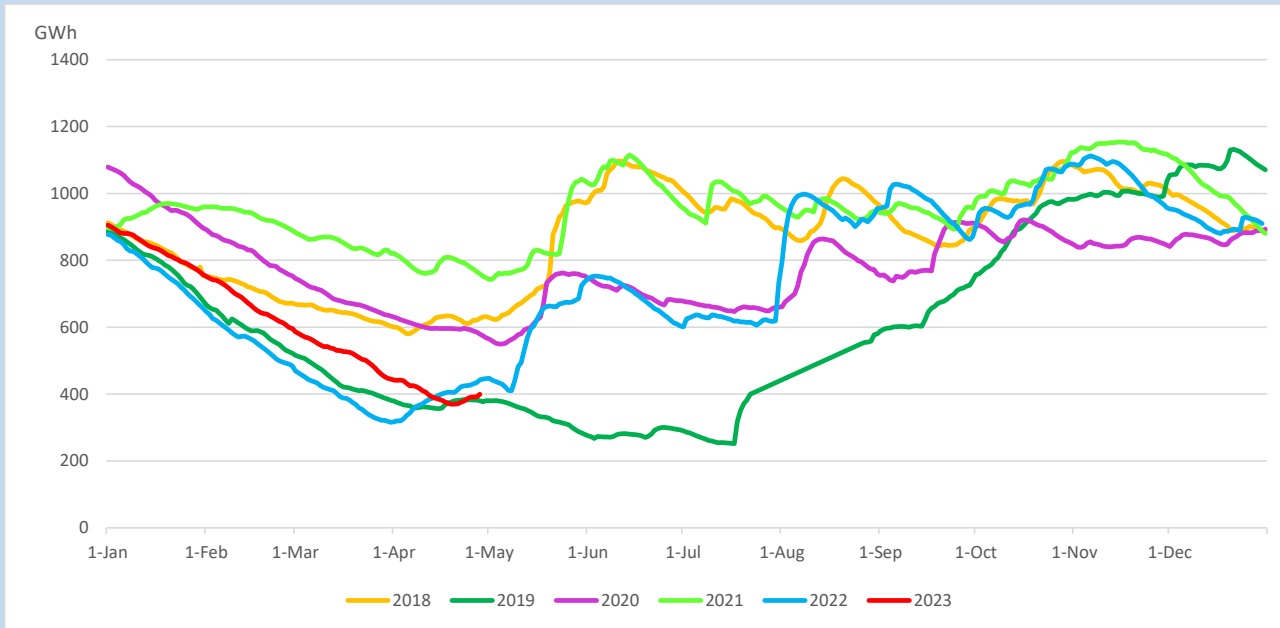
Reservoir Levels -

as at 06.00 Hr on April 30, 2023

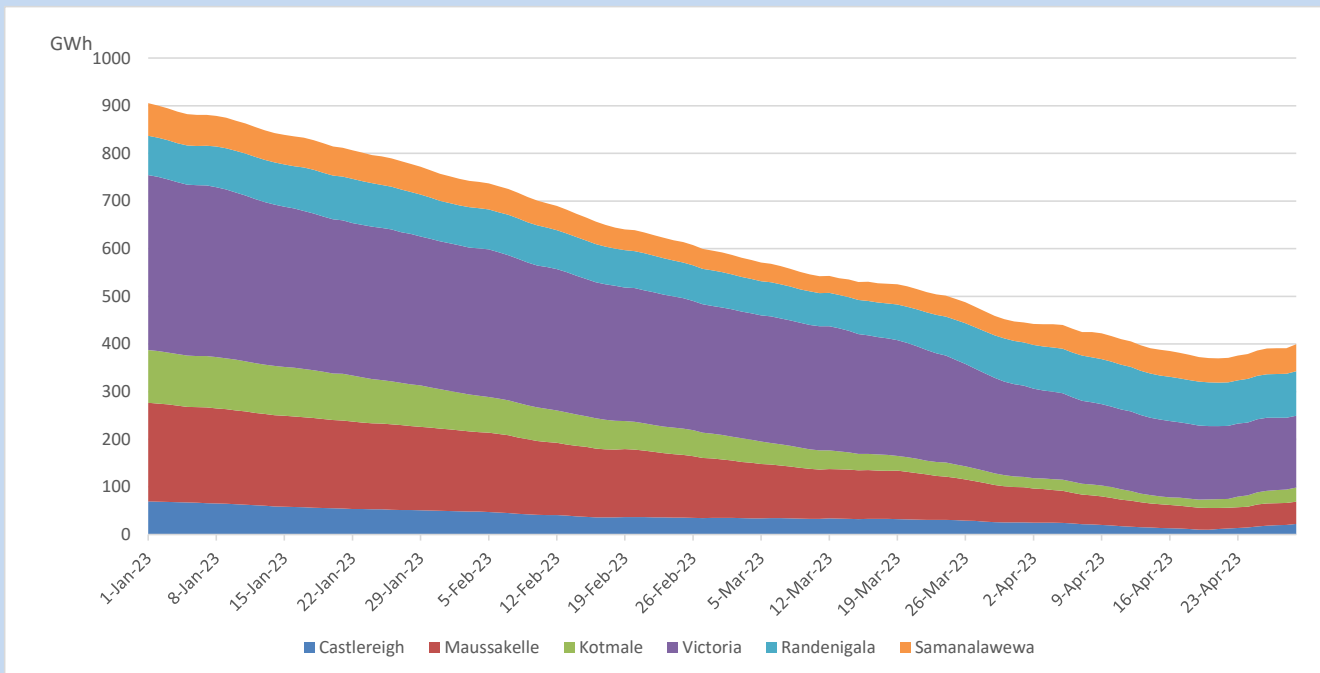


Total Reservoir Level	399.5 GWh
% of Total capacity	33.2%

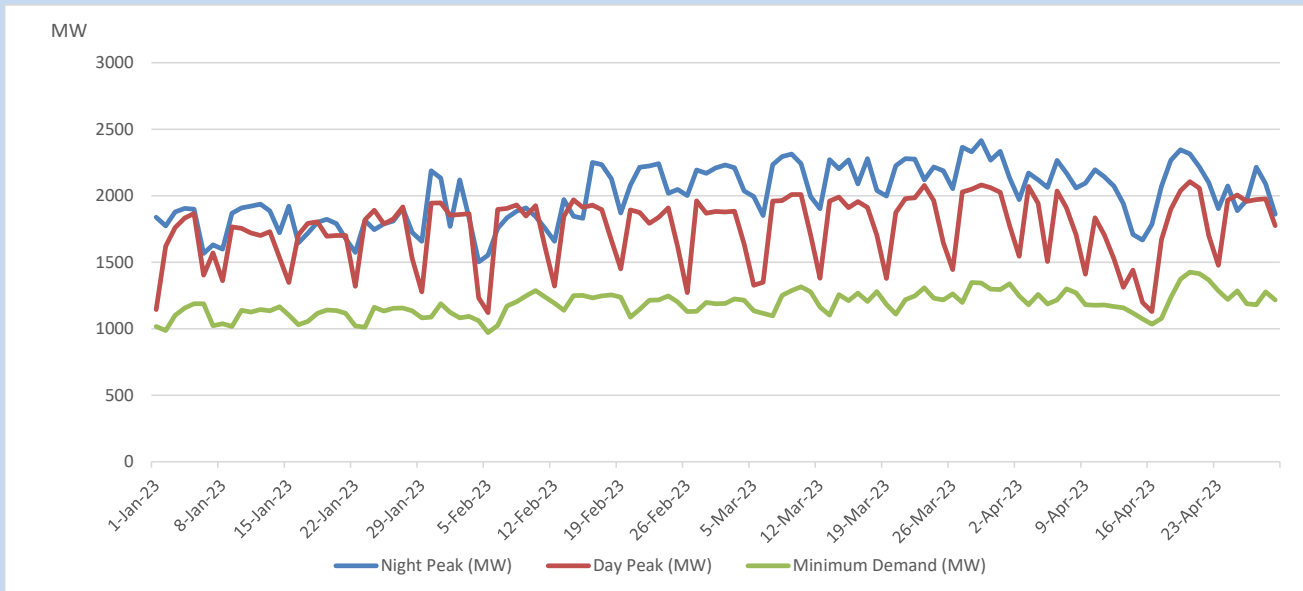
Comparison of Total Reservoir Storage Levels with Past Years



Variation of Major Hydro Reservoir Levels in the current year (GWh)



Variation of Demand during the current year

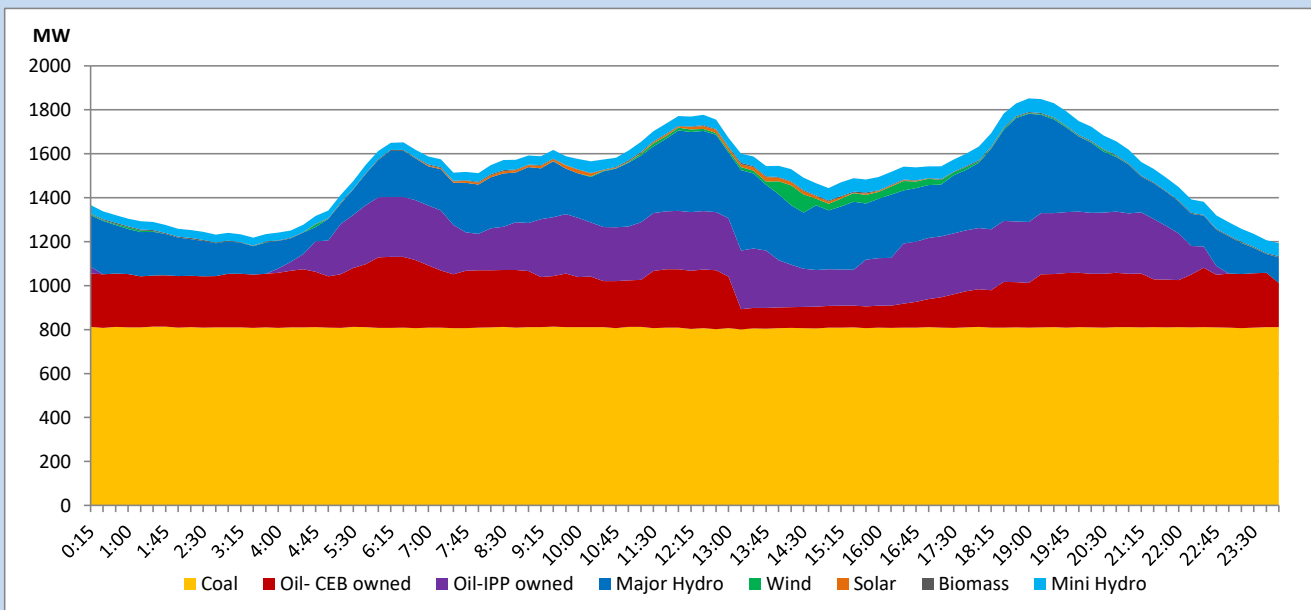


The above figures are excluding contribution from roof top solar, non telemetered solar and mini hydro plants

Daily Load Curve

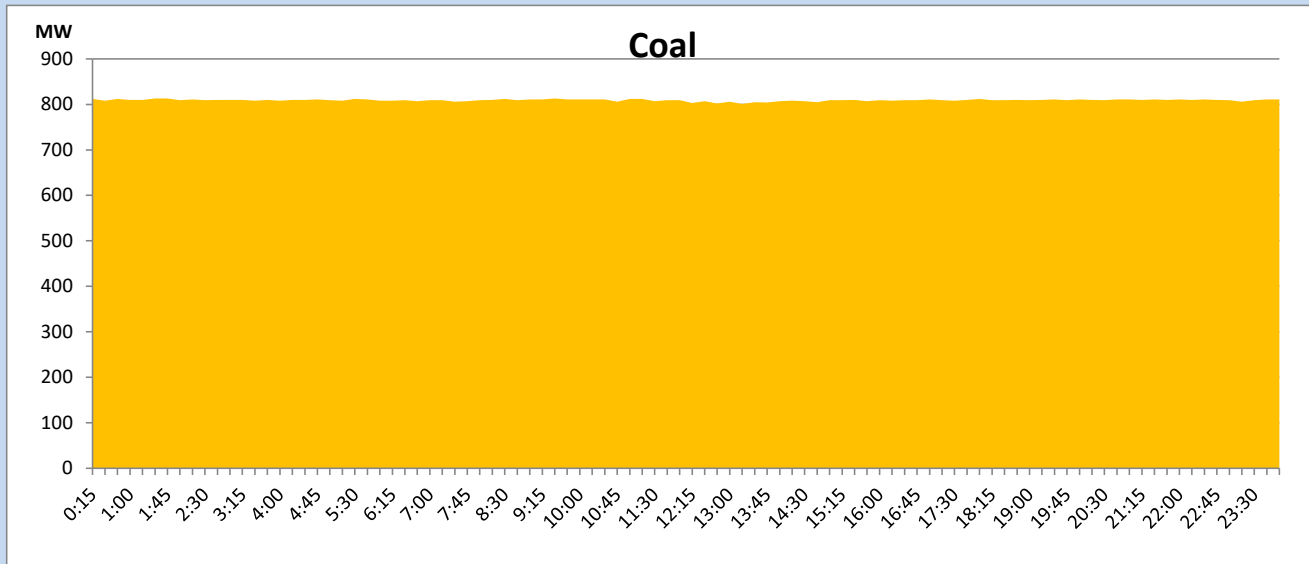
April 29, 2023

Solar and wind data is based on Telemetered Power Stations only



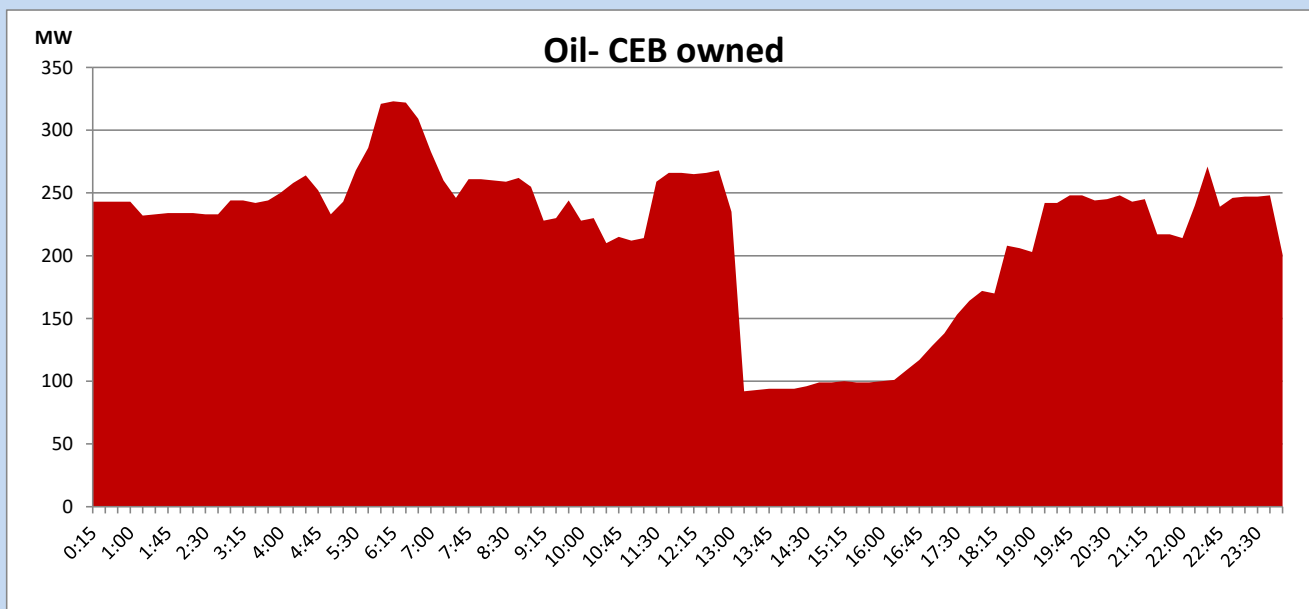
Coal Generation during

April 29, 2023



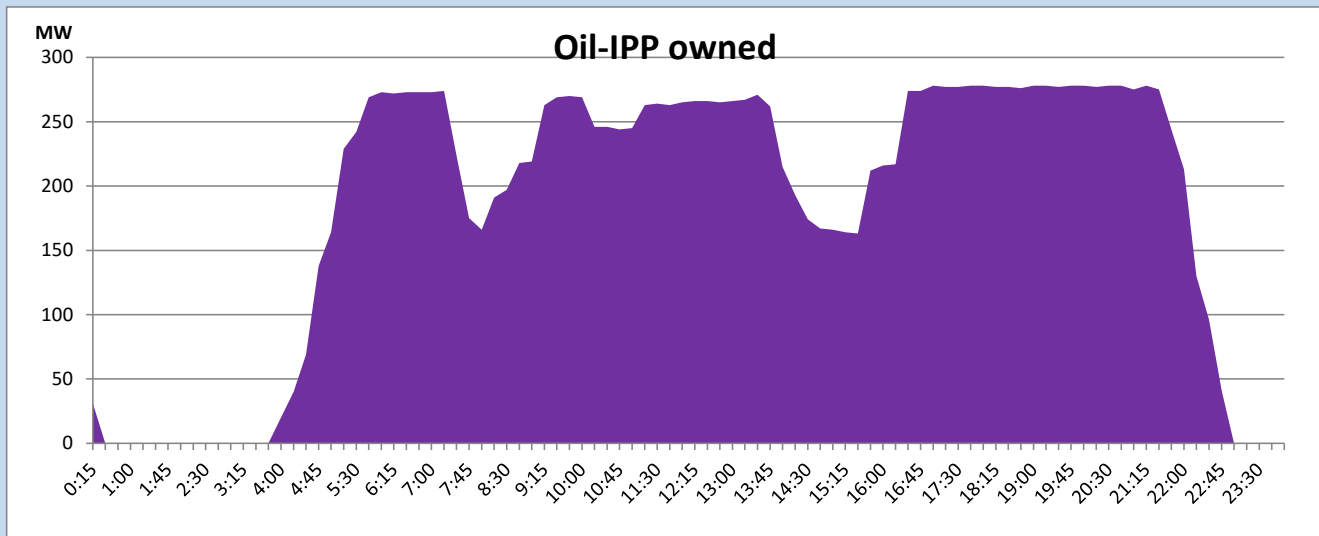
CEB Oil Plant Generation during

April 29, 2023



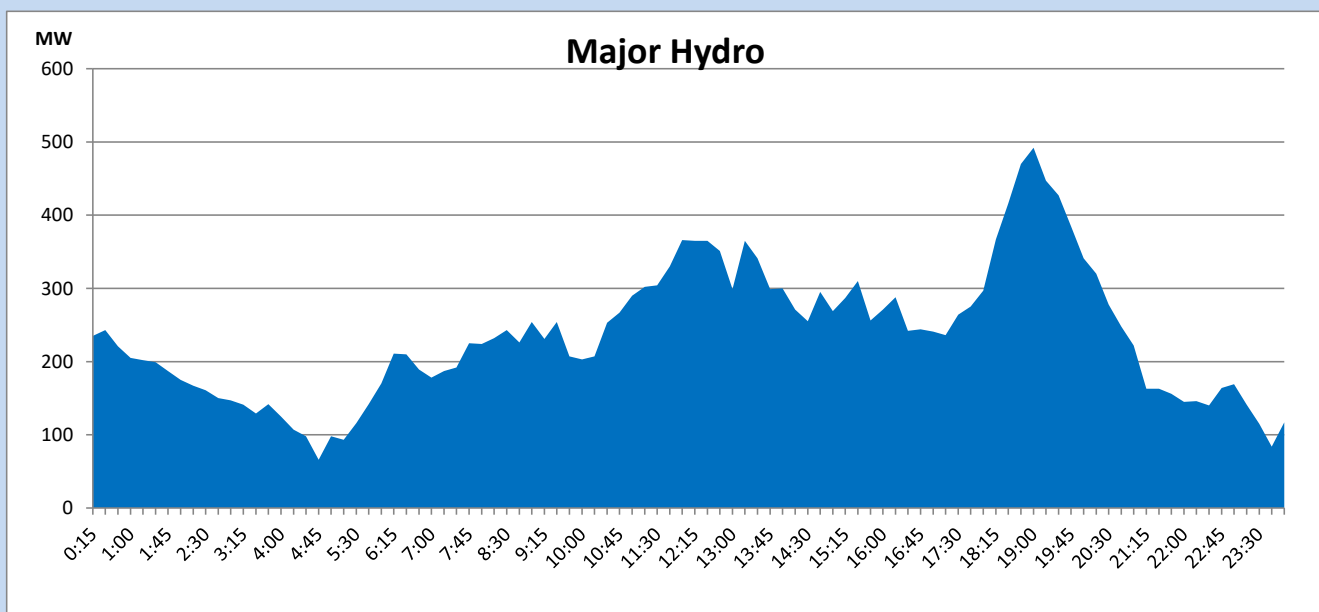
IPP Oil Plant Generation during

April 29, 2023



Major Hydro Generation during

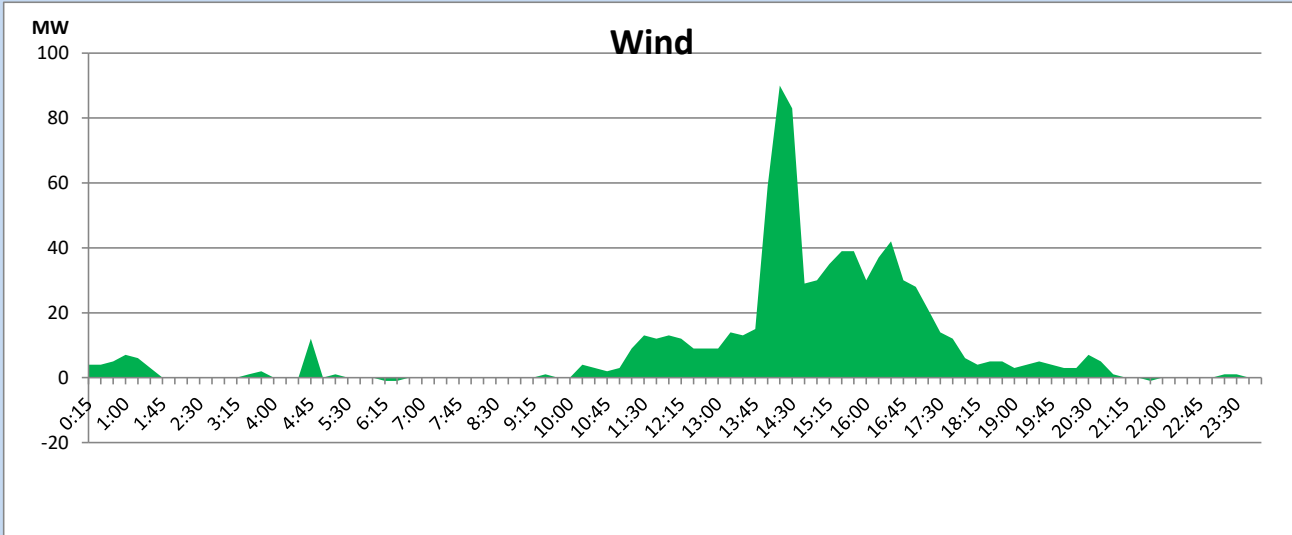
April 29, 2023



Wind Generation during

April 29, 2023

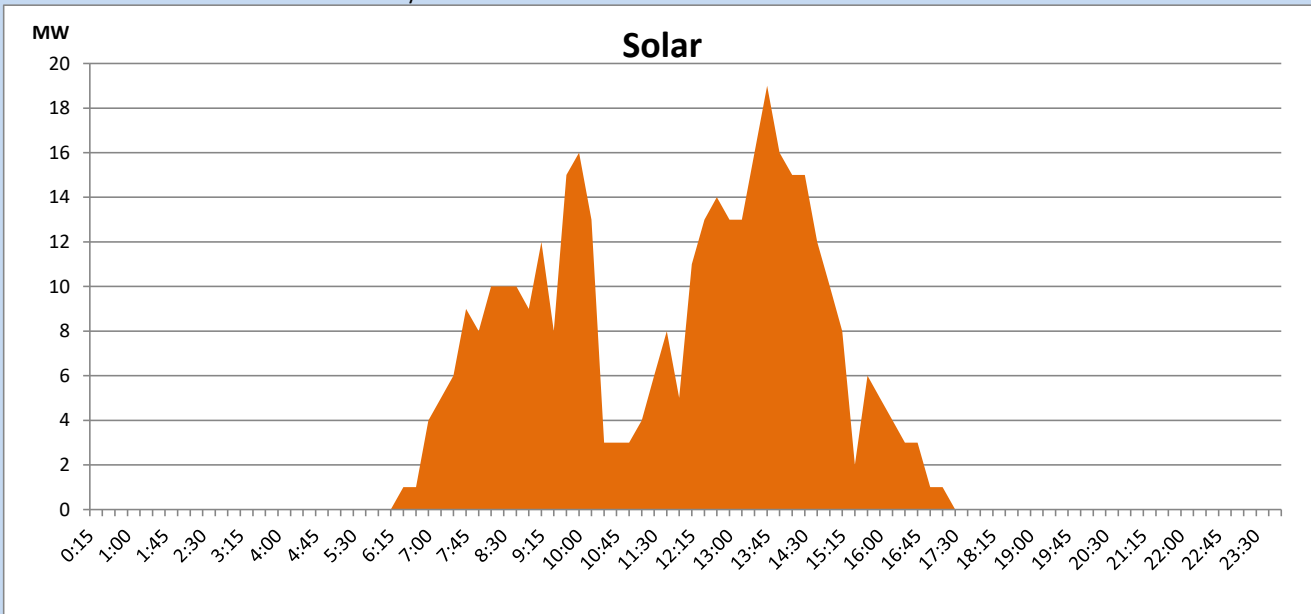
Based on Telemetered Power Stations only



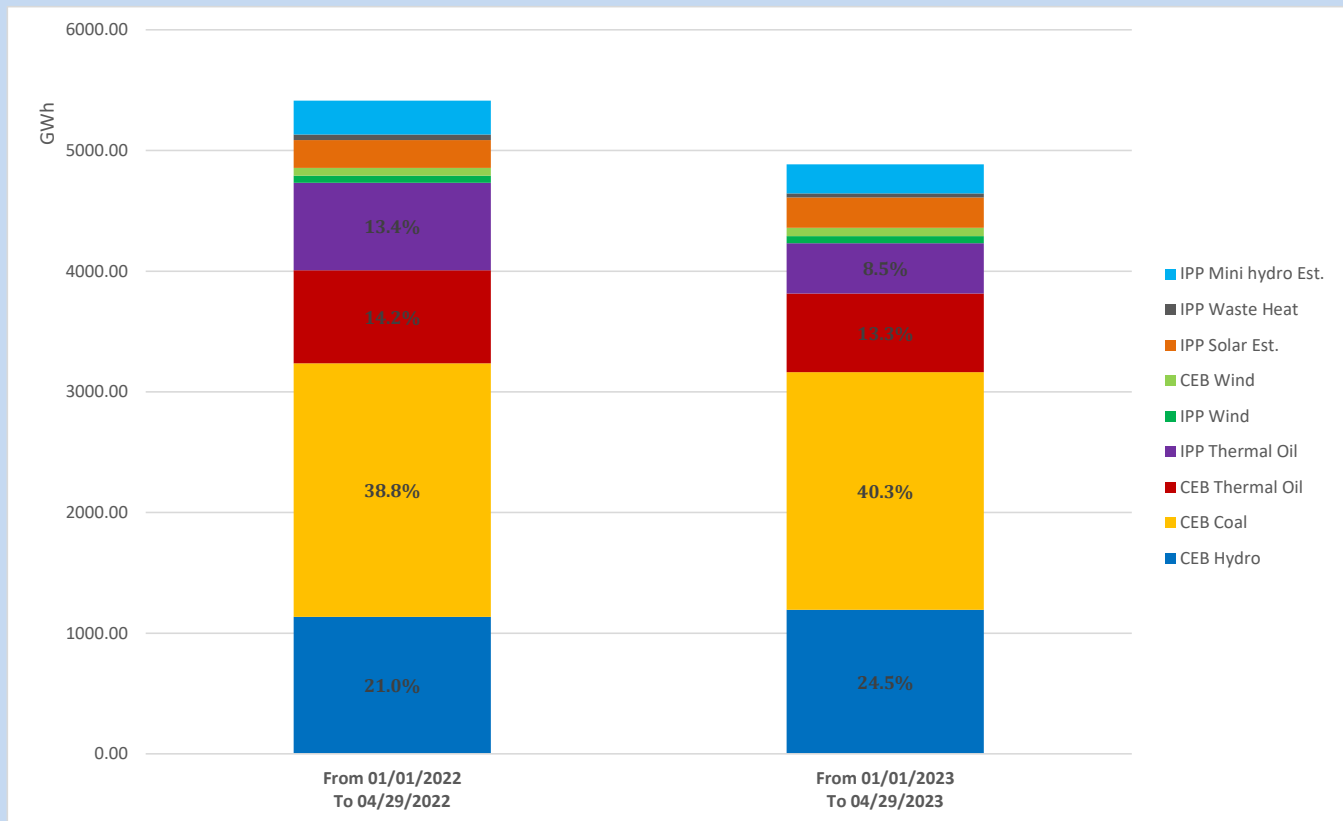
Solar Generation during

April 29, 2023

Based on Telemetered Power Stations only



Cumulative Dispatch Comparison with Last Year



The above figures are including contribution from roof top solar, non telemetered solar and mini hydro plants

Thermal Plant Fuel types

Power Station	Primary Fuel
CEB Thermal	
Sapugaskanda 1	Heavy Fuel
Sapugaskanda 2	Heavy Fuel
Kelanitissa Small Gas Turbines	Auto Diesel
GT 7 - Kelanitissa	Auto Diesel
Kelanitissa CCY	Naphtha or Diesel
Lakvijaya 1	Coal
Lakvijaya 2	Coal
Lakvijaya 3	Coal
Uthuru Janani	Heavy Fuel
Barge CEB	Heavy Fuel

Power Station	Primary Fuel
Private Thermal	
West Coast	Auto Diesel / Heavy Fuel

Major Incidents reported during the day

April 29, 2023

1) Athurugiriya 132/33kV T/F 01 and 02 tripped from 33kv side at 12:54hrs with a blast and a fire in 33kV GIS, causing all 33kV feeders to be dead. At the same time, Athurugiriya 33kV B/S CB and Capacitor B1 tripped due to operation of O/C and E/F protection. Athurugiriya T/F 01 restored at 18:01hrs, and 33kV feeders 01, 03, and 05 restored at 18:41hrs, 18:35hrs and 18:22hrs, respectively. Athurugiriya T/F 02, 33kV BS 02 and 33kV feeders 02, 04, 06 and 08 are yet to be restored.

2) KCCP GT and ST tripped at 13:14hrs, rejecting 130MW from the system, due to Diesel forwarding pump failure. System recovered with operation of UFLS stage 01. KCCP GT and ST resumed generation at 18:17hrs and 21:54hrs, respectively.

3) Bolawatta capacitors 1, 2 and 3 tripped at 14:38hrs with indication of General trip.