

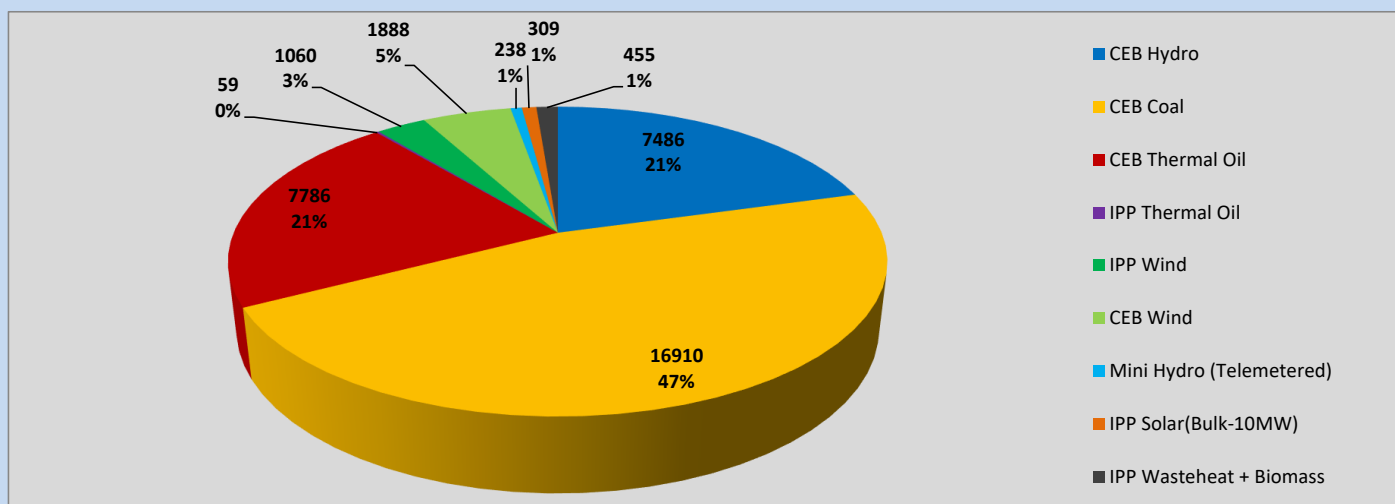
Generation and Reservoirs Statistics

May 28, 2023



PUBLIC UTILITIES COMMISSION OF SRI LANKA

Daily Generation Mix in MWh



Total Generation (Excluding estimated figures) =

36,191 MWh

Estimated figures of CEB generation report

Estimated unserved energy = 0.00 GWh

Estimated Mini Hydro (Non telemetered) = 3752 MWh

Estimated IPP Solar PV (Bulk 1-10MW) = 304 MWh

Estimated Solar Roof Top PV = 1920 MWh

Cumulative Dispatch

Following data excludes the contribution from roof top solar, non telemetered solar and mini hydro plants

For Current Month

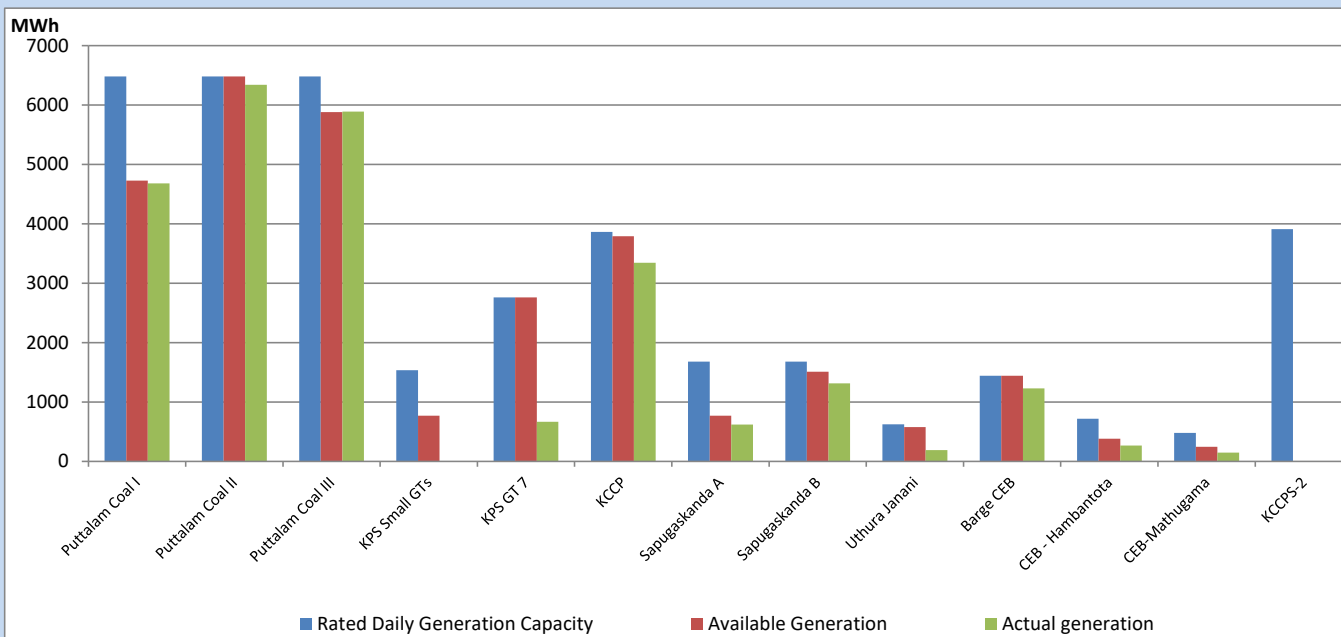
Category	Dispatch (GWh)	
CEB Hydro	242	22.56%
CEB Coal	457	42.55%
CEB Thermal Oil	161	15.04%
IPP Thermal	99	9.27%
SPP Wind	30	2.82%
CEB Wind	37	3.44%
Mini Hydro (Telemetered)	27	2.55%
IPP Solar (Bulk-10MW)	8	0.72%
IPP Wasteheat + BMP	11	1.03%
Total	1,073	

For Current Year

Category	Dispatch (GWh)	
CEB Hydro	1,444	25.65%
CEB Coal	2,444	43.43%
CEB Thermal Oil	817	14.51%
IPP Thermal	517	9.19%
SPP Wind	88	1.57%
CEB Wind	107	1.90%
Mini Hydro (Telemetered)	123	2.18%
IPP Solar (Bulk-10MW)	42	0.75%
IPP Wasteheat	46	0.81%
Total	5,627	

CEB owned Thermal Plant Dispatch

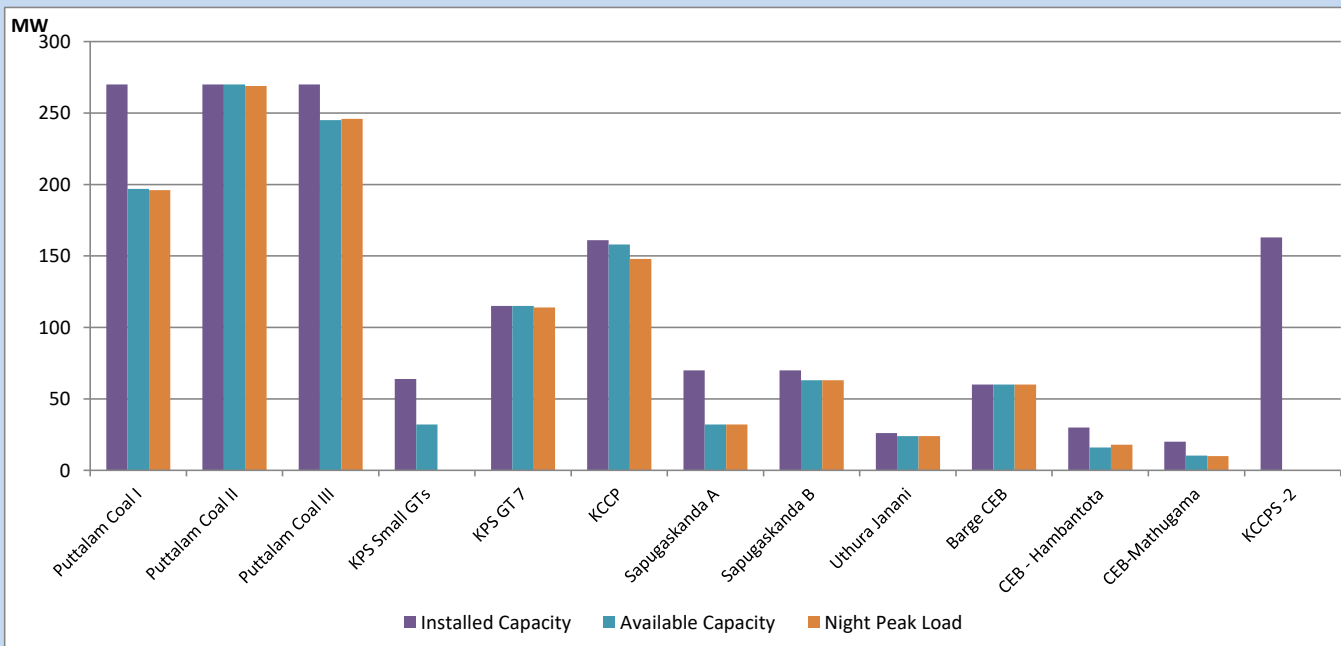
May 28, 2023



Available Generation is estimated based on plant availability at 6.00am on

May 29, 2023

CEB owned Thermal Plant Loading at the Night Peak



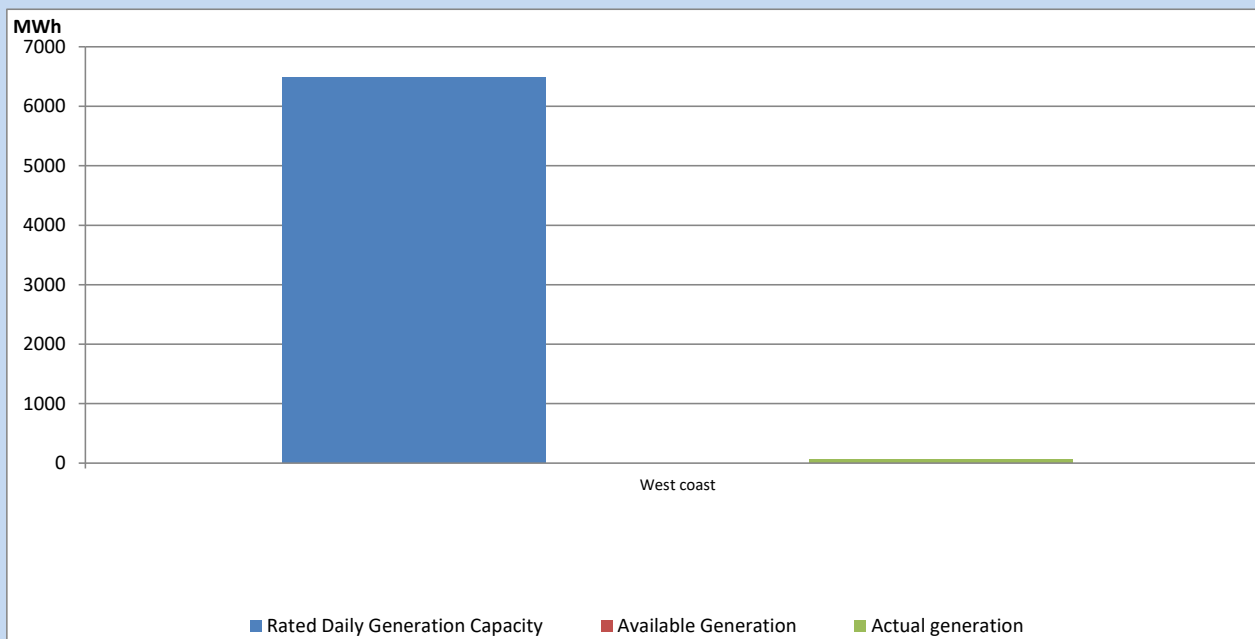
Note-

Plant availability is recorded at 6.00 am on

May 29, 2023

IPP owned Thermal Plant Dispatch

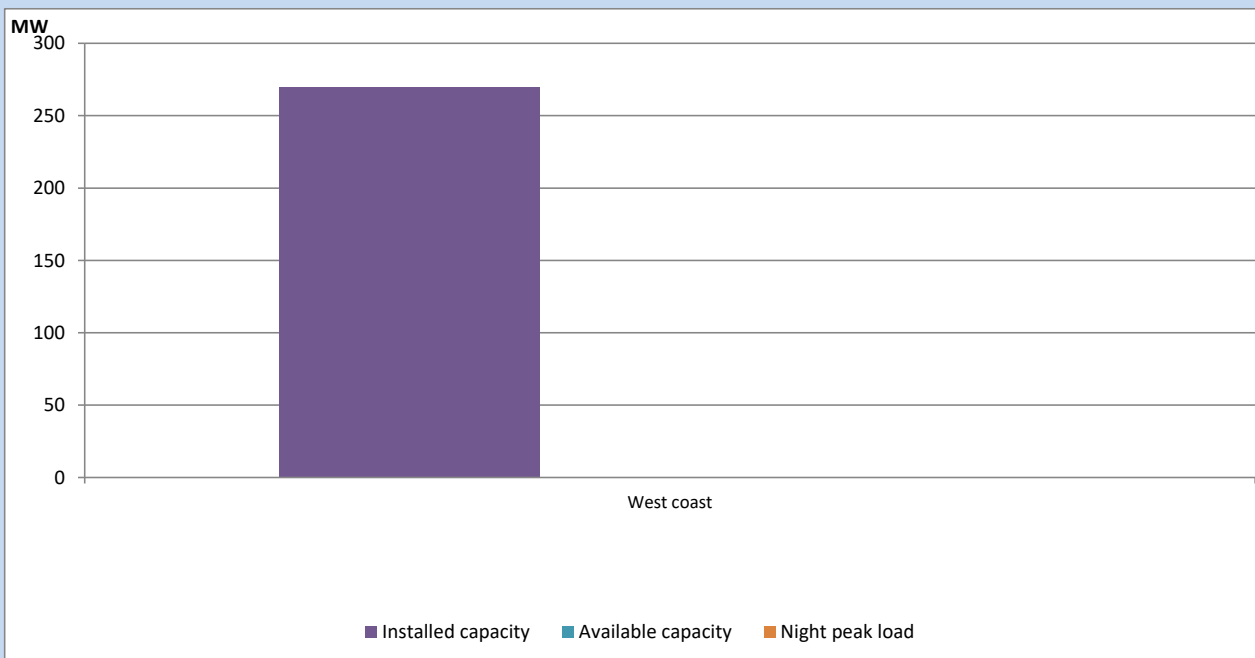
May 28, 2023



Available Generation is estimated based on plant availability at 6.00am on

May 29, 2023

IPP owned Thermal Plant Loading at the Night Peak

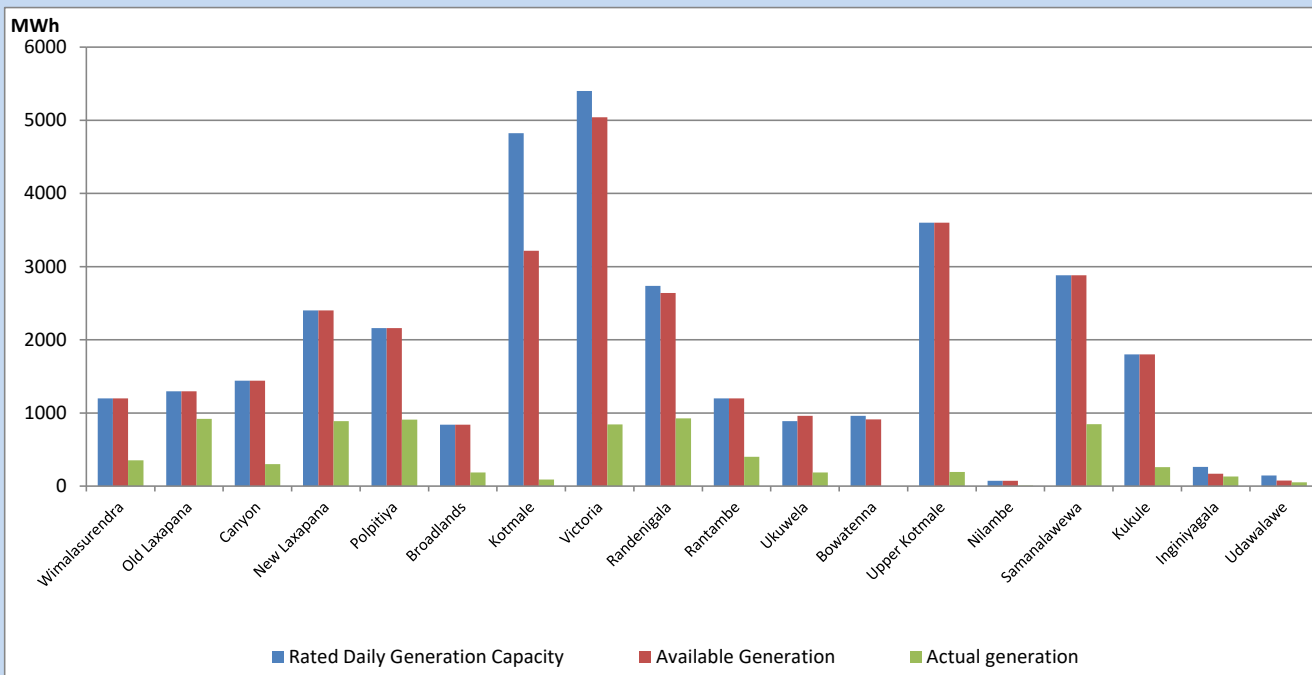


Note- Plant availability is recorded at 6.00 am on

May 29, 2023

Major Hydro Plant Dispatch

May 28, 2023

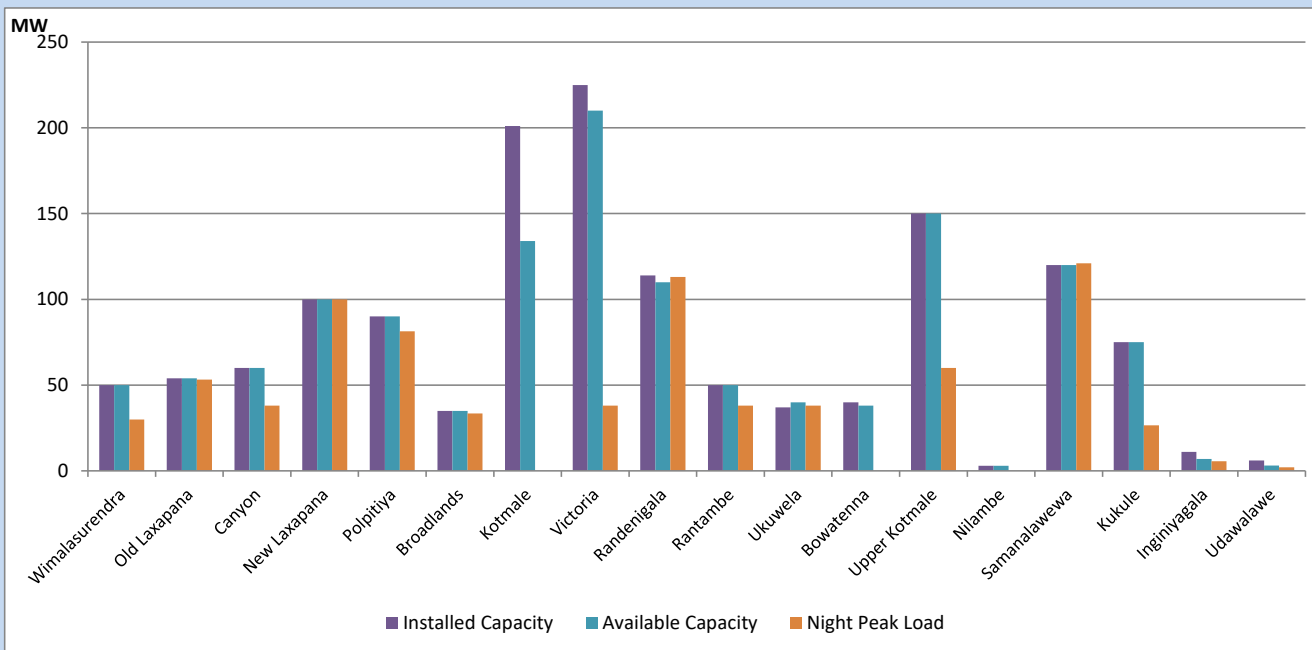


Available Generation is estimated based on plant availability at 6.00am on
Broadlands power plant is operating in the Commissioning Stage

May 29, 2023

Major Hydro Plant Loading at Night Peak

May 28, 2023



Note- Plant availability is recorded at 6.00 am on
Broadlands power plant is operating in the Commissioning Stage

May 29, 2023

Summary of Major Plant performance

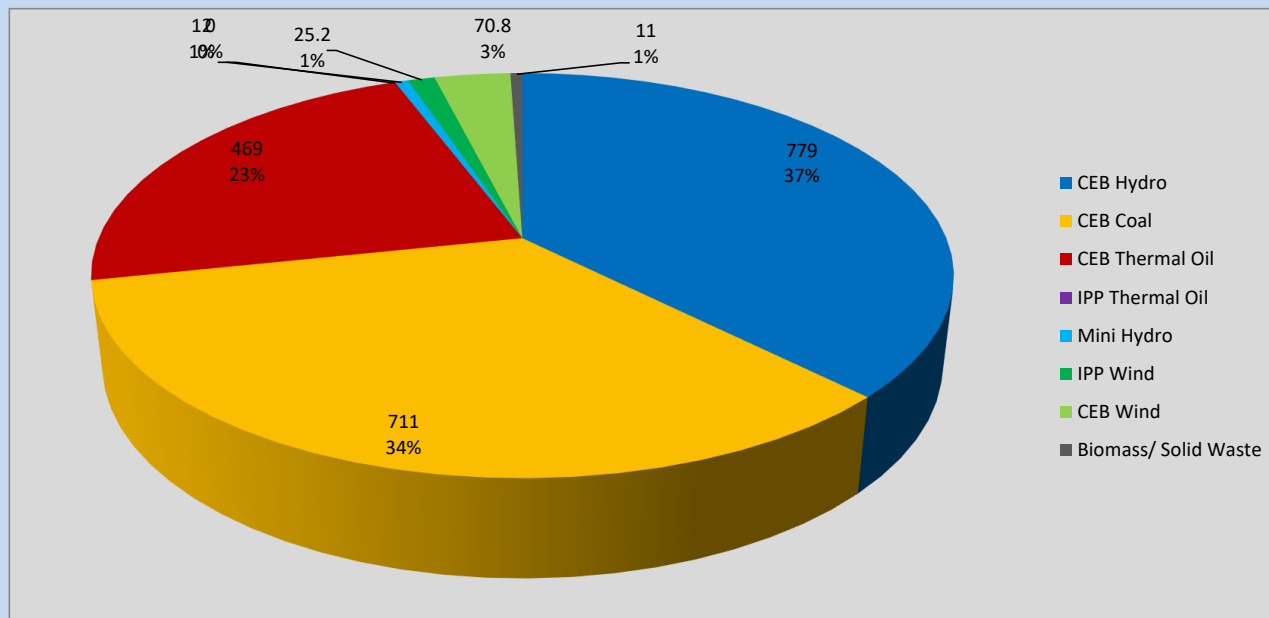
Plant	Installed Capacity	Plant Availability	Night peak Load	Plant Dispatch
	(MW)	(MW)	(MW)	(MWh)
Wimalasurendra	50	50	30	354
Old Laxapana	54	54	53	919
Canyon	60	60	38	299
New Laxapana	100	100	100	889
Polpitiya	90	90	81	907
Broadlands	35	35	34	185
Kotmale	201	134	0	90
Victoria	225	210	38	842
Randenigala	114	110	113	926
Rantambe	50	50	38	401
Ukuwela	37	40	38	188
Bowatenna	40	38	0	0
Upper Kotmale	150	150	60	192
Nilambe	3	3	0	7
Samanalawewa	120	120	121	847
Kukule	75	75	27	258
Inginiyagala	11	7	6	130
Udawalawe	6	3	2	52
Puttalam Coal I	270	197	196	4,681
Puttalam Coal II	270	270	269	6,341
Puttalam Coal III	270	245	246	5,888
KPS Small GTs	64	32	0	0
KPS GT 7	115	115	114	666
KCCP	161	158	148	3,344
Sapugaskanda A	70	32	32	620
Sapugaskanda B	70	63	63	1,316
Uthura Janani	26	24	24	192
Barge CEB	60	60	60	1,231
CEB-Hambantota	30	16	18	269
CEB-Mathugama	20	10	10	148
ACE Matara	24	0	0	0
Asia Power	50	0	0	0
KCCPS -2	163	0	0	0
West Coast	270	0	0	59
Nothern Power	36	0	0	0
ACE Embilipitiya	93	0	0	0
Total	3,483	2,551	2,078	36,191

Plant availability is the availability recorded at 6 am on

May 29, 2023

Contribution to the Night Peak in MW

May 28, 2023

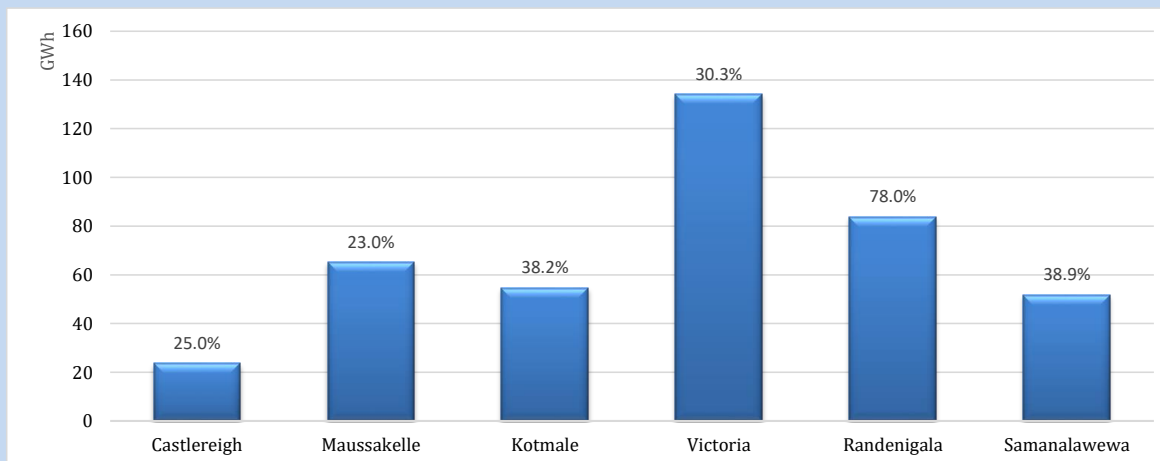


Night Peak*	2,079 MW
Day Peak Maximum Demand	1,452 MW
Day Peak Minimum Demand	1,260 MW
Off Peak Minimum Demand	1,311 MW

Above figures are excluding contribution from roof top solar, non telemetered solar and mini hydro plants

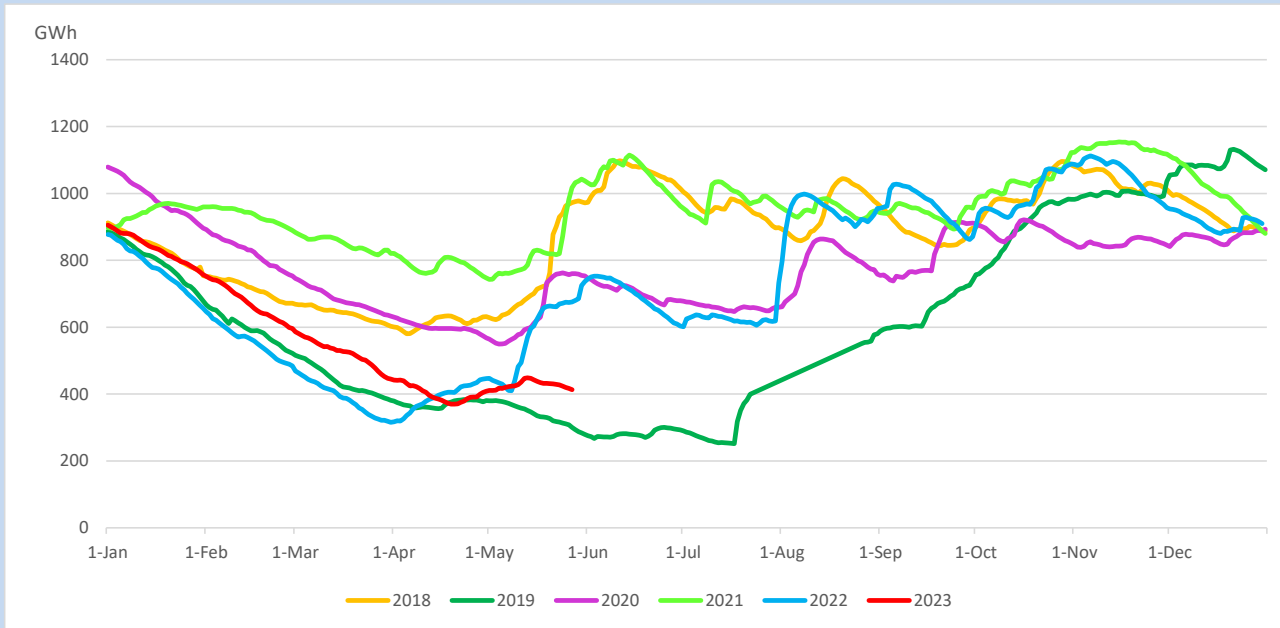
Reservoir Levels -

as at 06.00 Hr on May 29, 2023

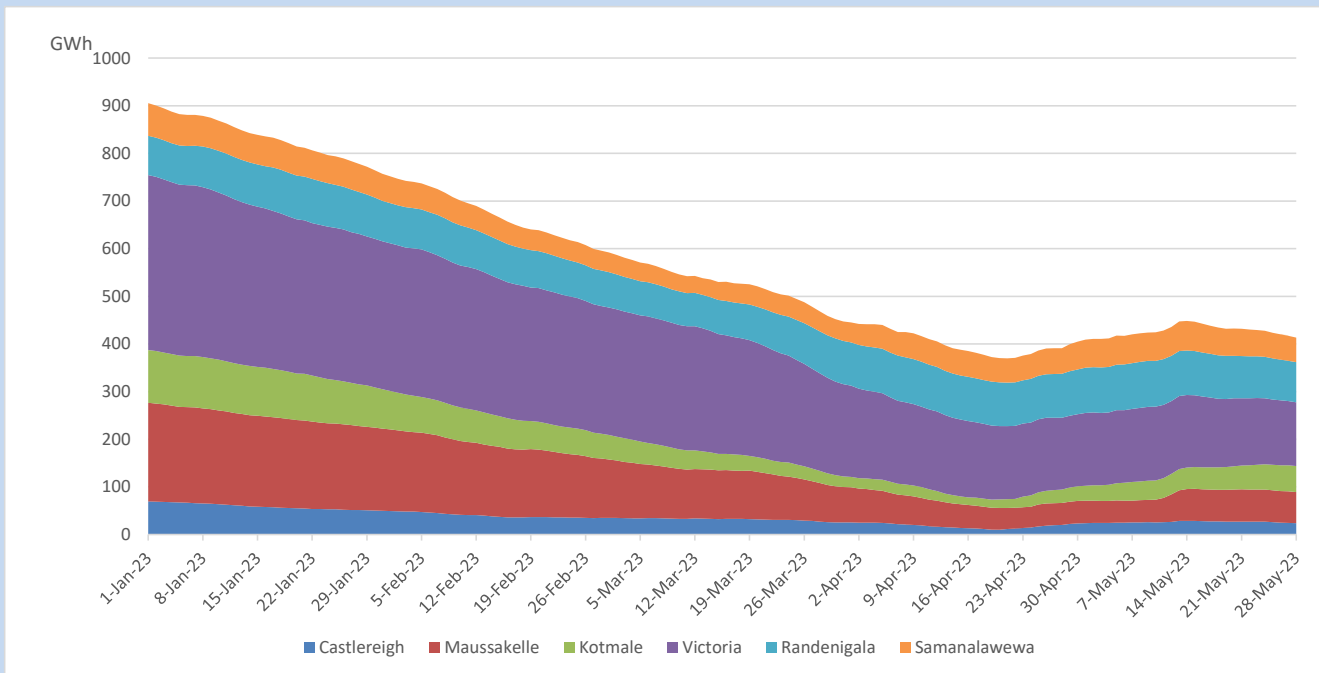


Total Reservoir Level	413.4 GWh
% of Total capacity	34.3%

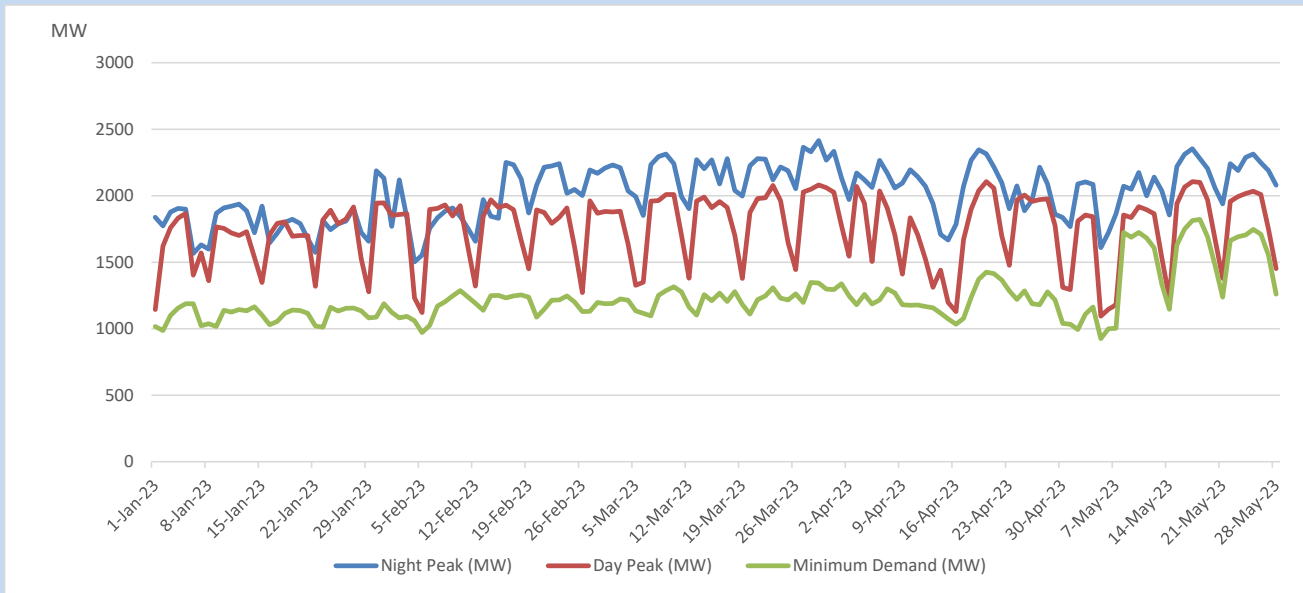
Comparison of Total Reservoir Storage Levels with Past Years



Variation of Major Hydro Reservoir Levels in the current year (GWh)



Variation of Demand during the current year

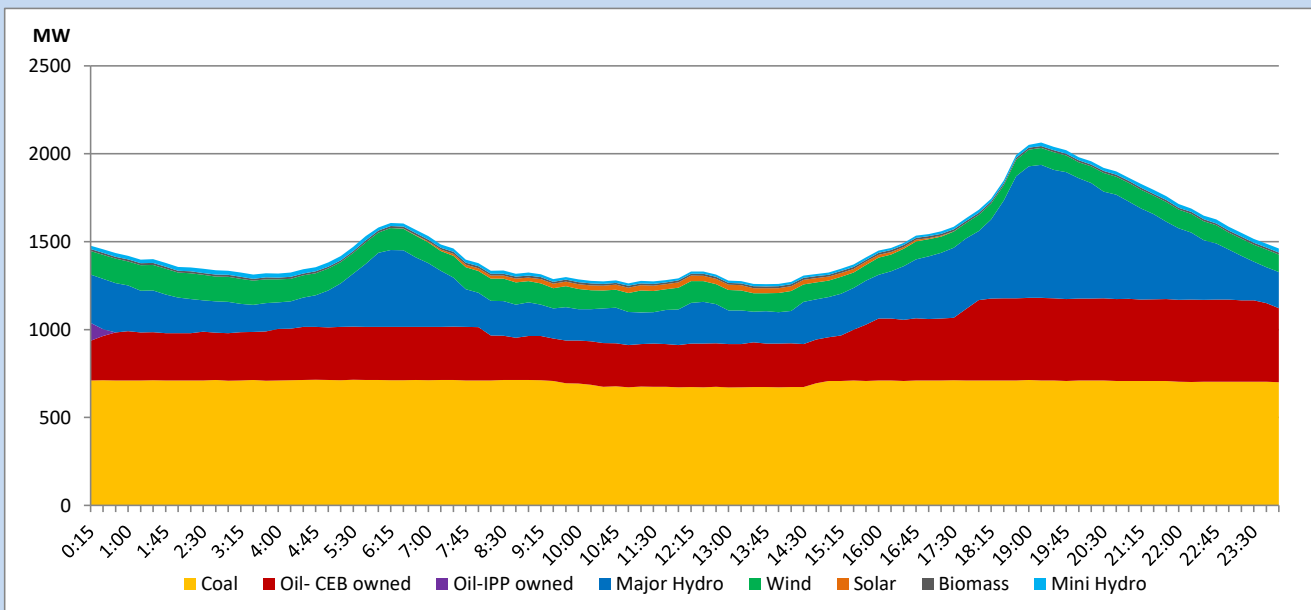


The above figures are excluding contribution from roof top solar, non telemetered solar and mini hydro plants

Daily Load Curve

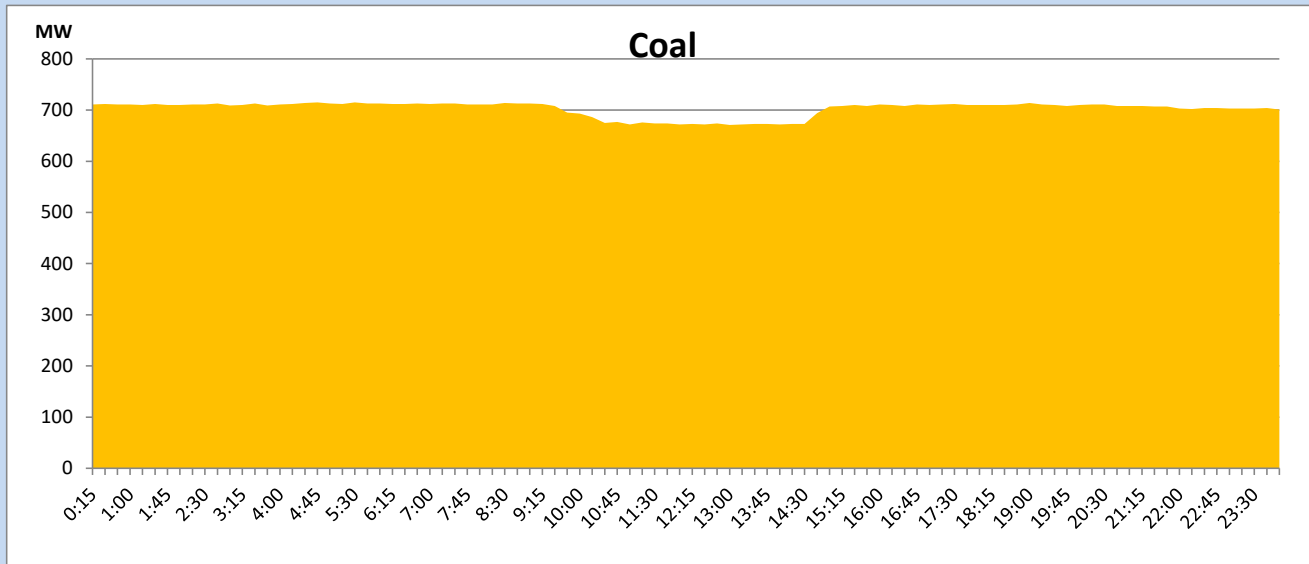
May 28, 2023

Solar and wind data is based on Telemetered Power Stations only



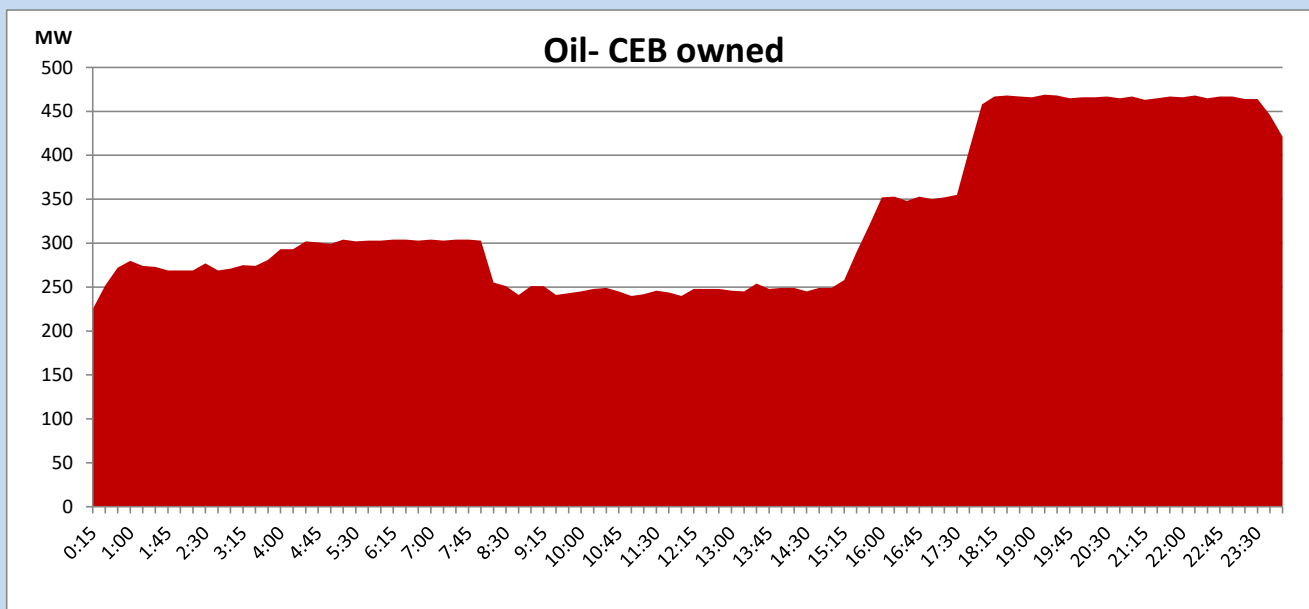
Coal Generation during

May 28, 2023



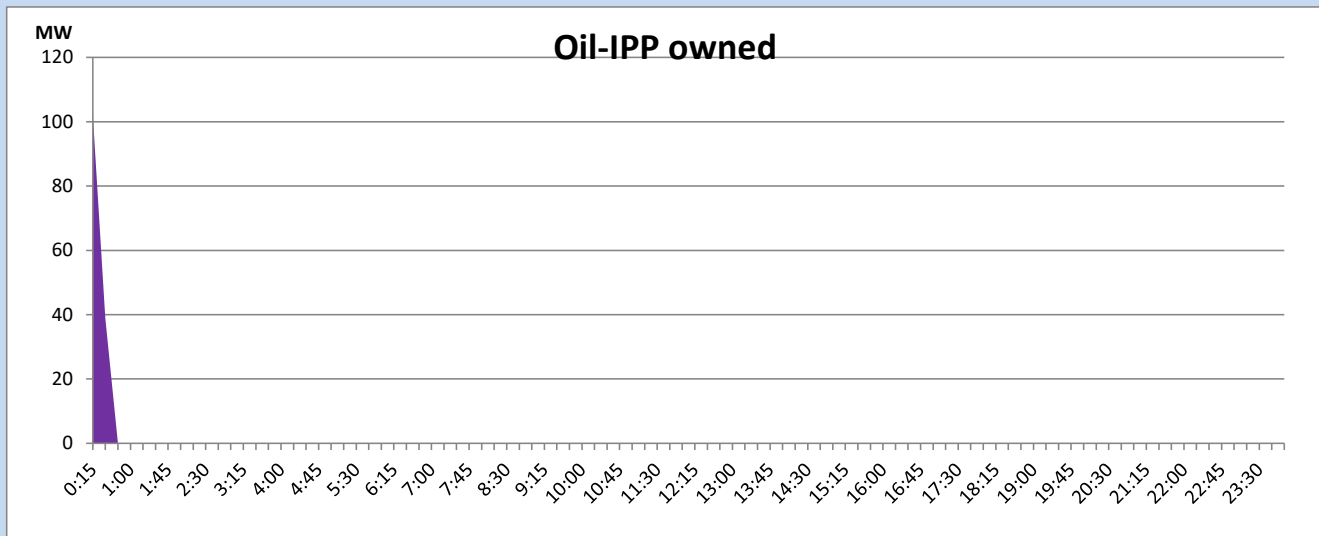
CEB Oil Plant Generation during

May 28, 2023



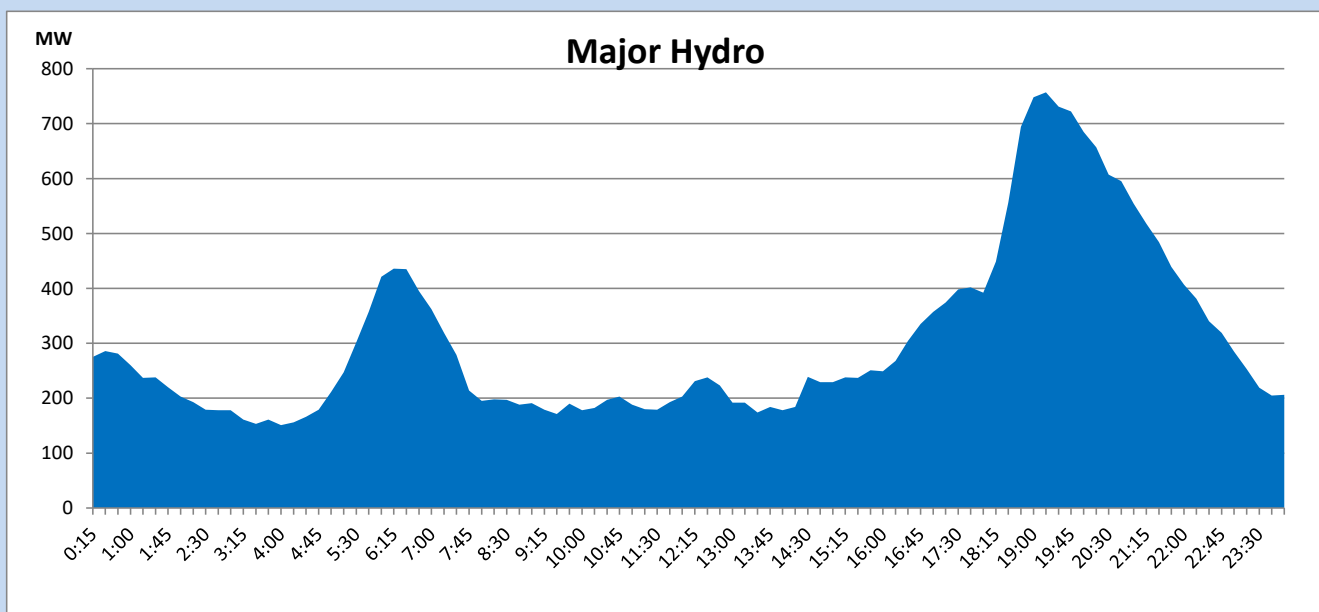
IPP Oil Plant Generation during

May 28, 2023



Major Hydro Generation during

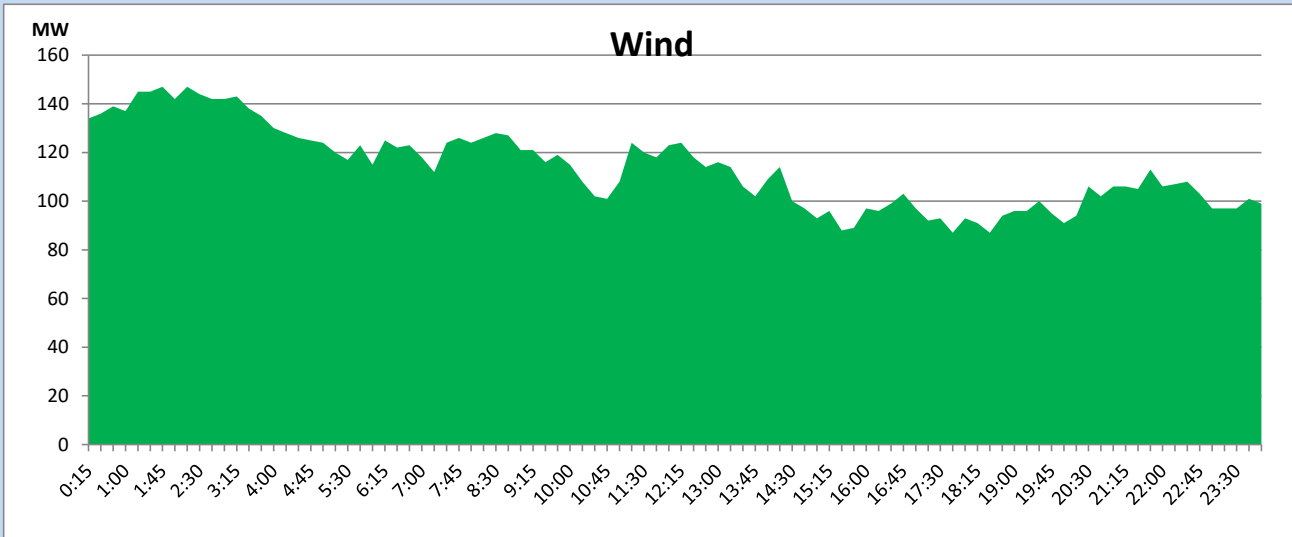
May 28, 2023



Wind Generation during

May 28, 2023

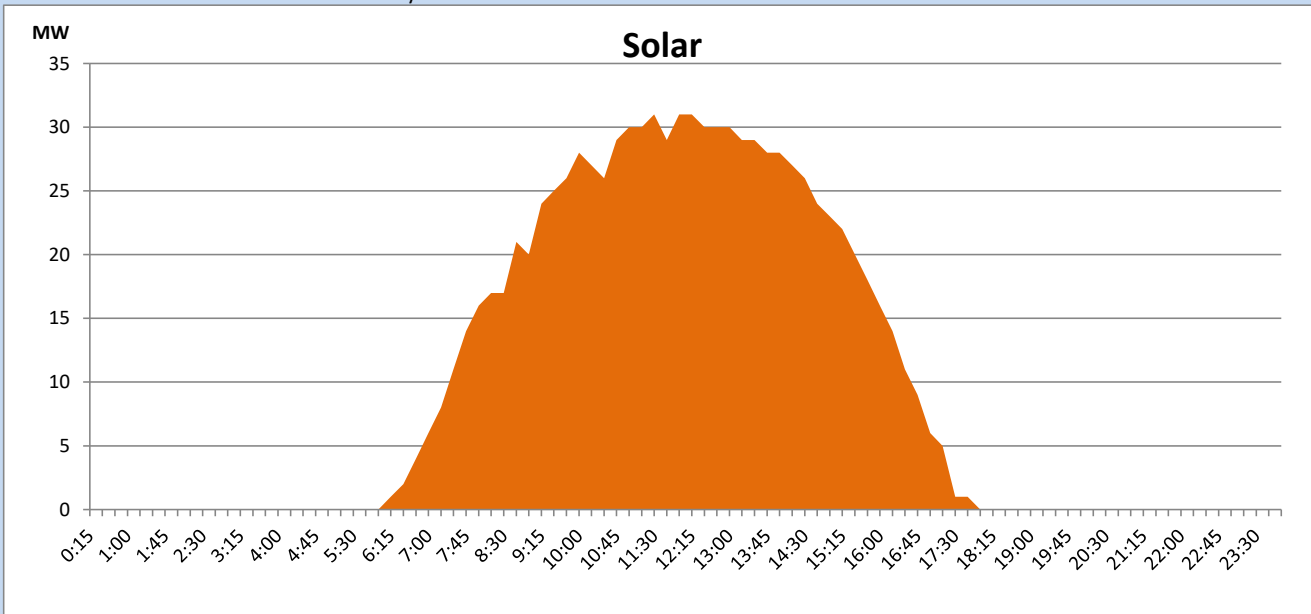
Based on Telemetered Power Stations only



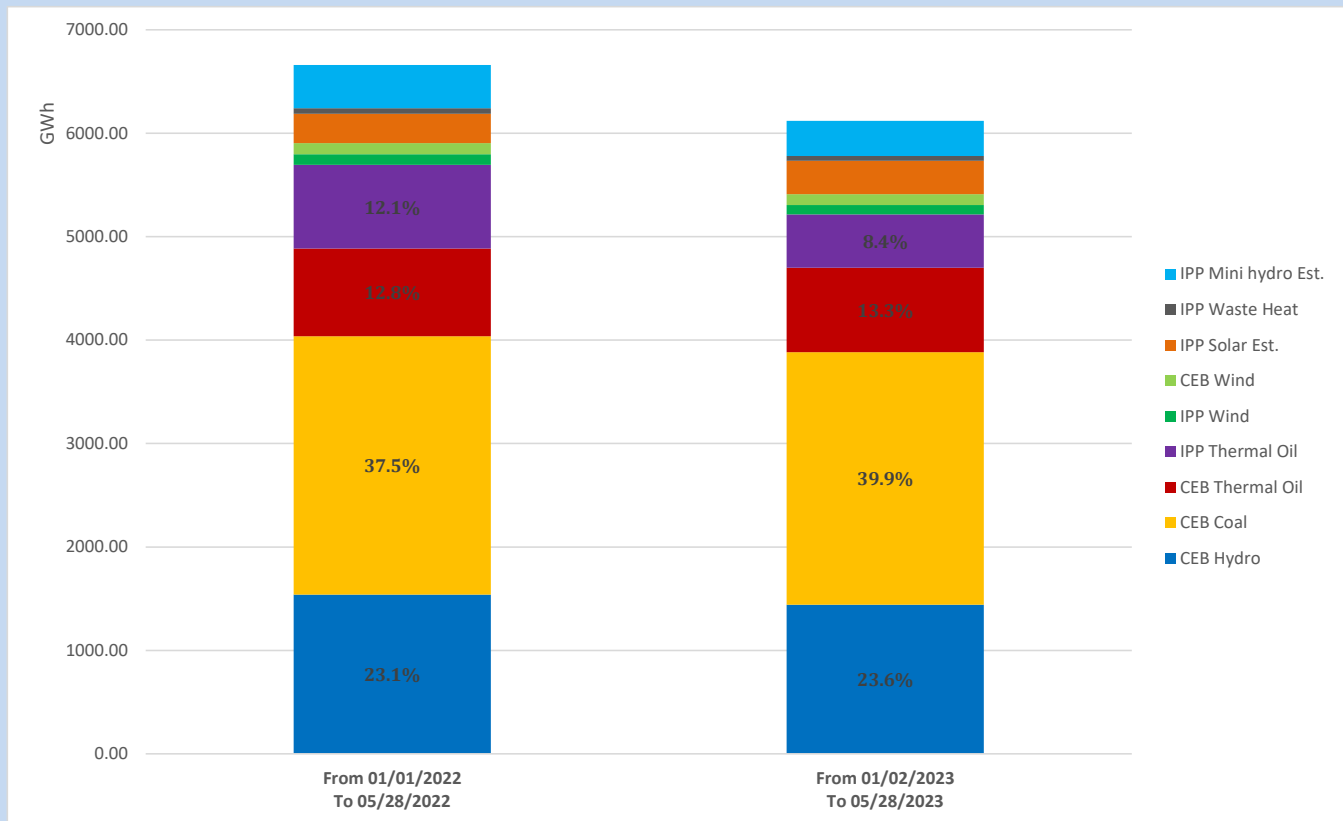
Solar Generation during

May 28, 2023

Based on Telemetered Power Stations only



Cumulative Dispatch Comparison with Last Year



The above figures are including contribution from roof top solar, non telemetered solar and mini hydro plants

Thermal Plant Fuel types

Power Station	Primary Fuel
CEB Thermal	
Sapugaskanda 1	Heavy Fuel
Sapugaskanda 2	Heavy Fuel
Kelanitissa Small Gas Turbines	Auto Diesel
GT 7 - Kelanitissa	Auto Diesel
Kelanitissa CCY	Naphtha or Diesel
Lakvijaya 1	Coal
Lakvijaya 2	Coal
Lakvijaya 3	Coal
Uthuru Janani	Heavy Fuel
Barge CEB	Heavy Fuel
KCCPS -2	Auto Diesel

Power Station	Primary Fuel
Private Thermal	
West Coast	Auto Diesel / Heavy Fuel

Major Incidents reported during the day

May 28, 2023

- 1) KPS GT-07 failed to synchronize at 16:00hrs due to high vibrations , GT-07 synchronized at 17:30hrs and reached full load by 18:08hrs.