

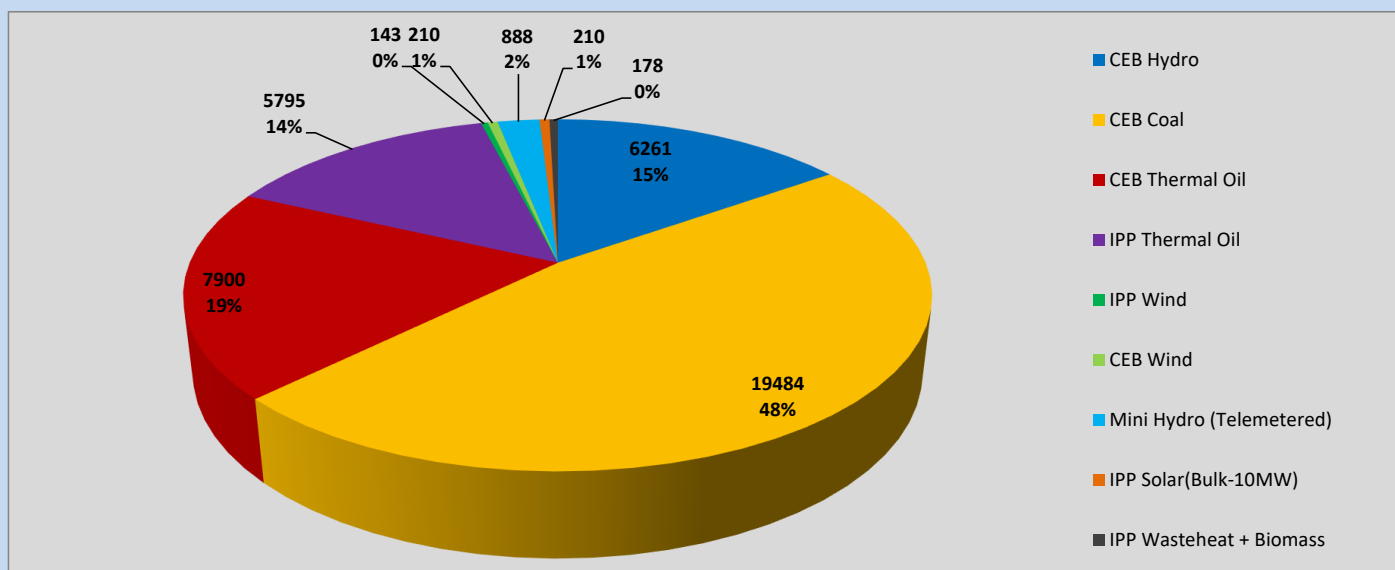
Generation and Reservoirs Statistics

April 28, 2023



PUBLIC UTILITIES COMMISSION OF SRI LANKA

Daily Generation Mix in MWh



Total Generation (Excluding estimated figures) =

41,069 MWh

Estimated figures of CEB generation report

Estimated unserved energy = 0.00 GWh

Estimated Mini Hydro (Non telemetered) = 1492 MWh

Estimated IPP Solar PV (Bulk 1-10MW) = 304 MWh

Estimated Solar Roof Top PV = 1640 MWh

Cumulative Dispatch

Following data excludes the contribution from roof top solar, non telemetered solar and mini hydro plants

For Current Month

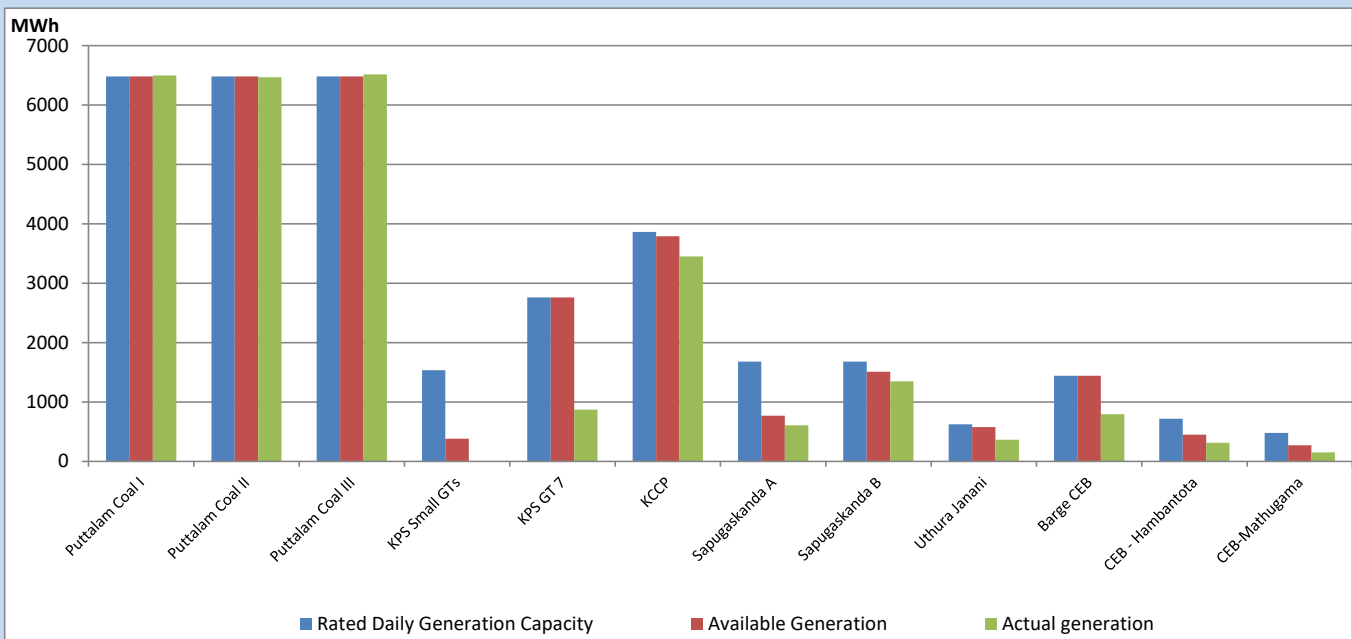
Category	Dispatch (GWh)	
CEB Hydro	268	25.03%
CEB Coal	427	39.86%
CEB Thermal Oil	176	16.41%
IPP Thermal	143	13.37%
SPP Wind	7	0.63%
CEB Wind	10	0.89%
Mini Hydro (Telemetered)	24	2.26%
IPP Solar (Bulk-10MW)	8	0.79%
IPP Wasteheat + BMP	8	0.76%
Total	1,070	

For Current Year

Category	Dispatch (GWh)	
CEB Hydro	1,189	26.51%
CEB Coal	1,949	43.45%
CEB Thermal Oil	646	14.39%
IPP Thermal	413	9.21%
SPP Wind	58	1.28%
CEB Wind	70	1.56%
Mini Hydro (Telemetered)	93	2.07%
IPP Solar (Bulk-10MW)	34	0.76%
IPP Wasteheat	34	0.77%
Total	4,486	

CEB owned Thermal Plant Dispatch

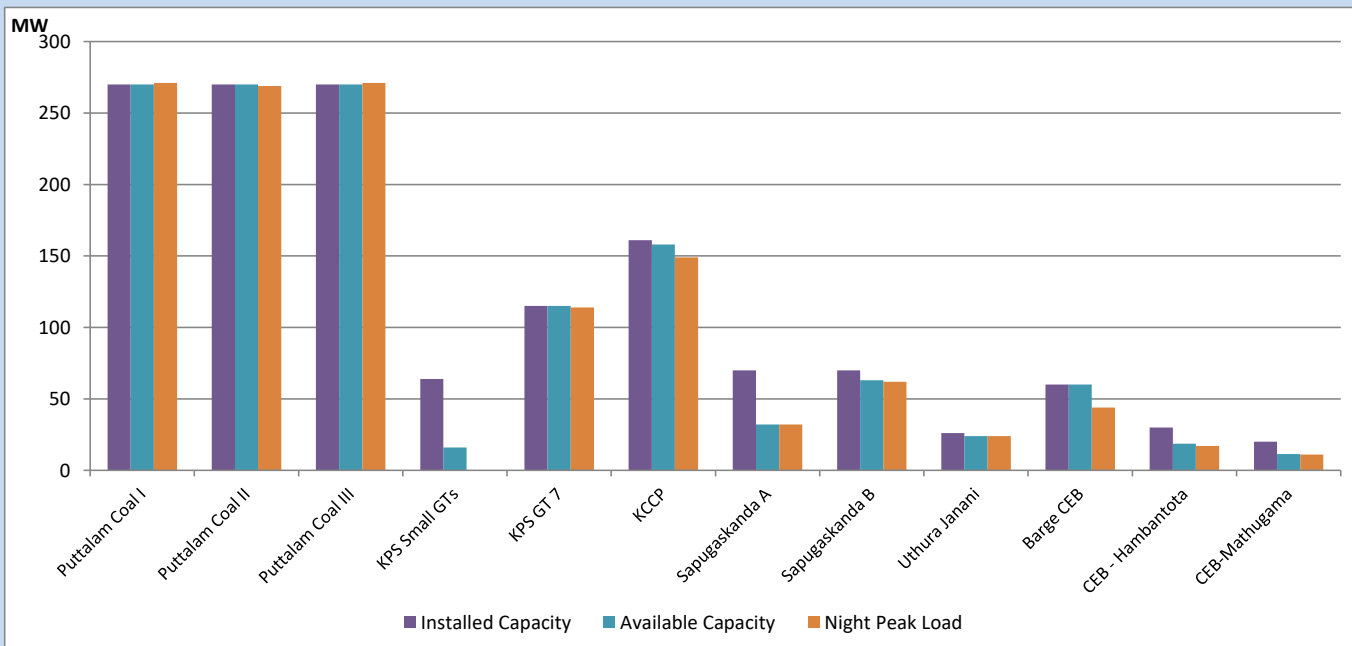
April 28, 2023



Available Generation is estimated based on plant availability at 6.00am on

April 29, 2023

CEB owned Thermal Plant Loading at the Night Peak

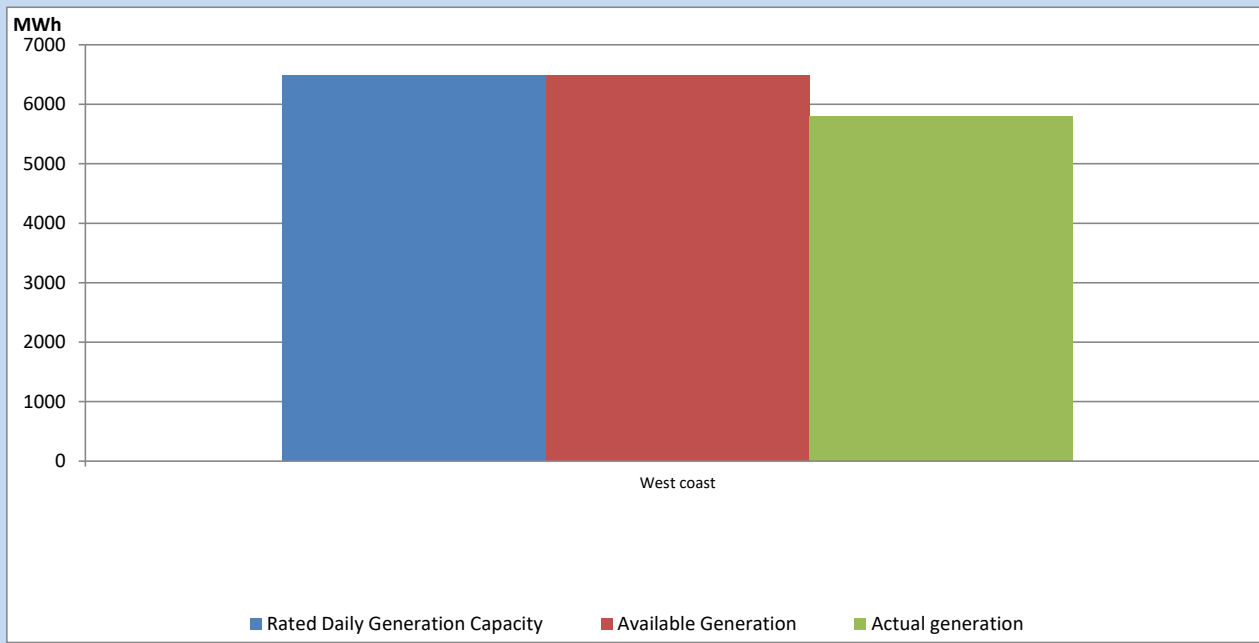


Note- Plant availability is recorded at 6.00 am on

April 29, 2023

IPP owned Thermal Plant Dispatch

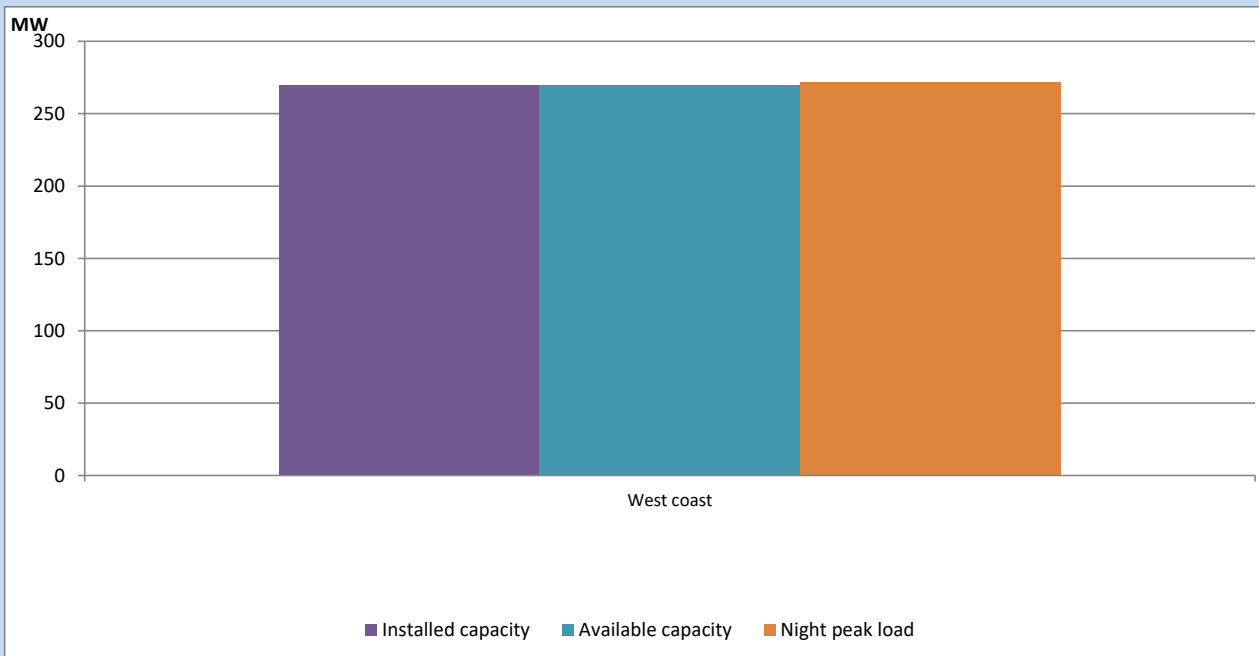
April 28, 2023



Available Generation is estimated based on plant availability at 6.00am on

April 29, 2023

IPP owned Thermal Plant Loading at the Night Peak

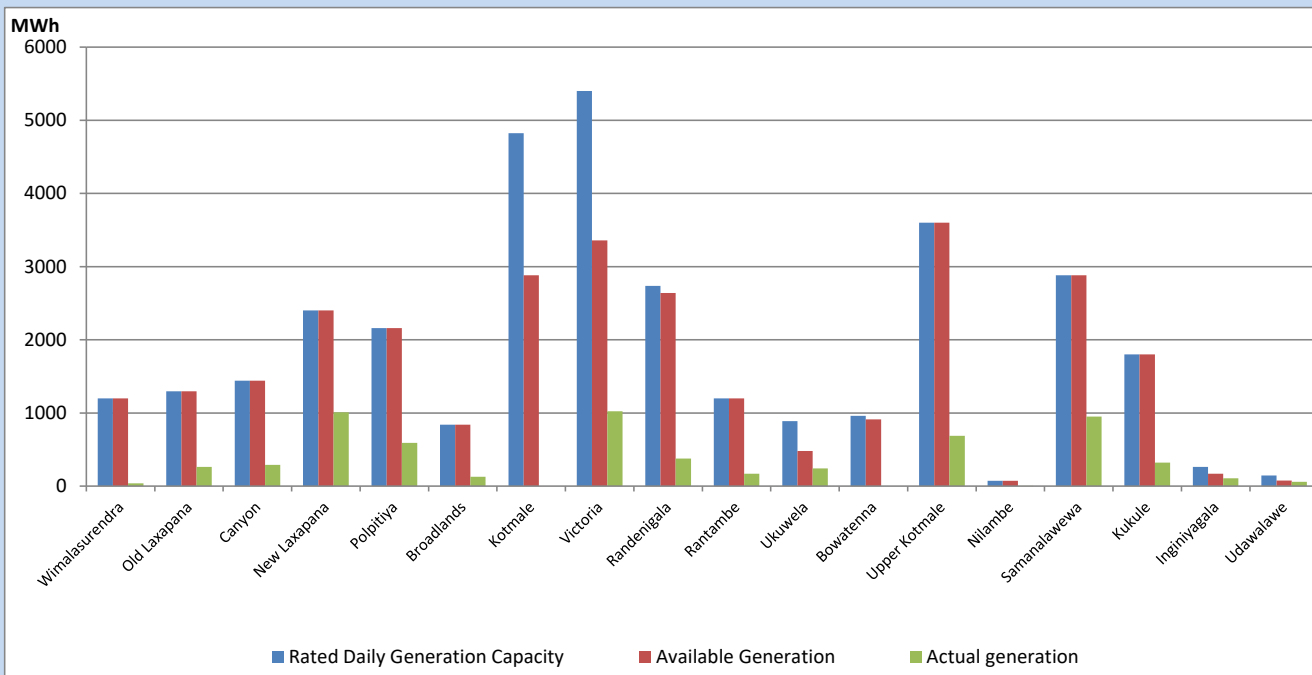


Note- Plant availability is recorded at 6.00 am on

April 29, 2023

Major Hydro Plant Dispatch

April 28, 2023

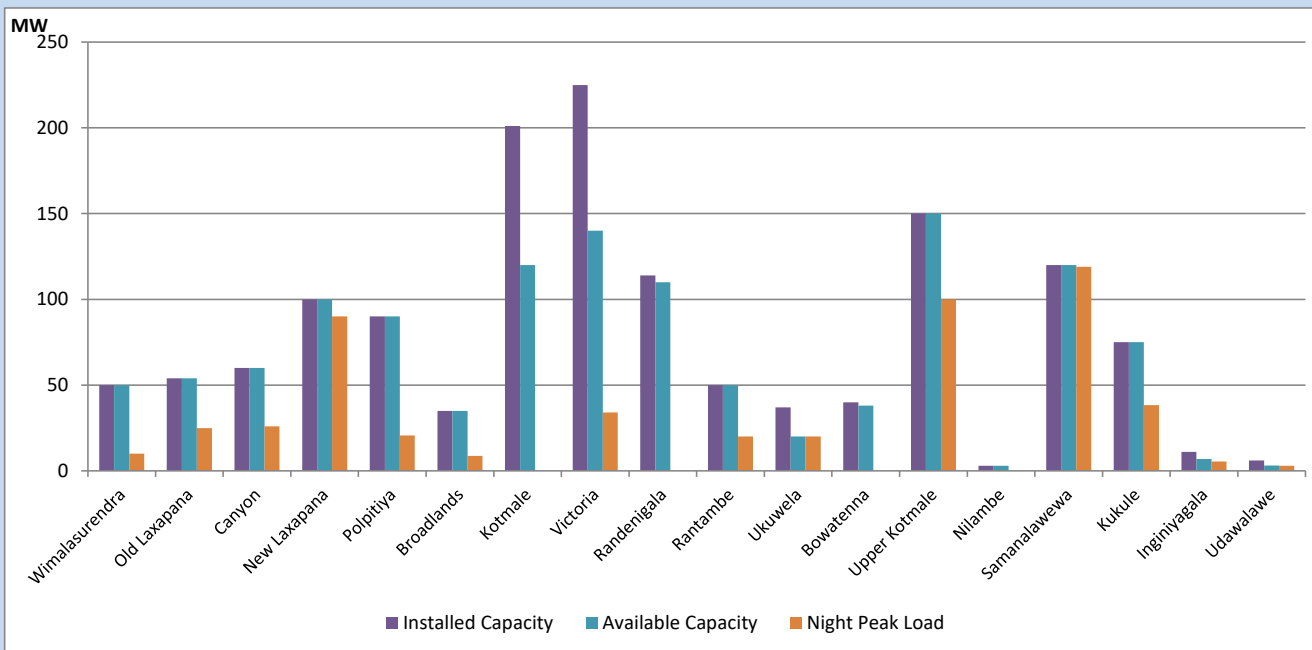


Available Generation is estimated based on plant availability at 6.00am on
Broadlands power plant is operating in the Commissioning Stage

April 29, 2023

Major Hydro Plant Loading at Night Peak

April 28, 2023



Note- Plant availability is recorded at 6.00 am on
Broadlands power plant is operating in the Commissioning Stage

April 29, 2023

Summary of Major Plant performance

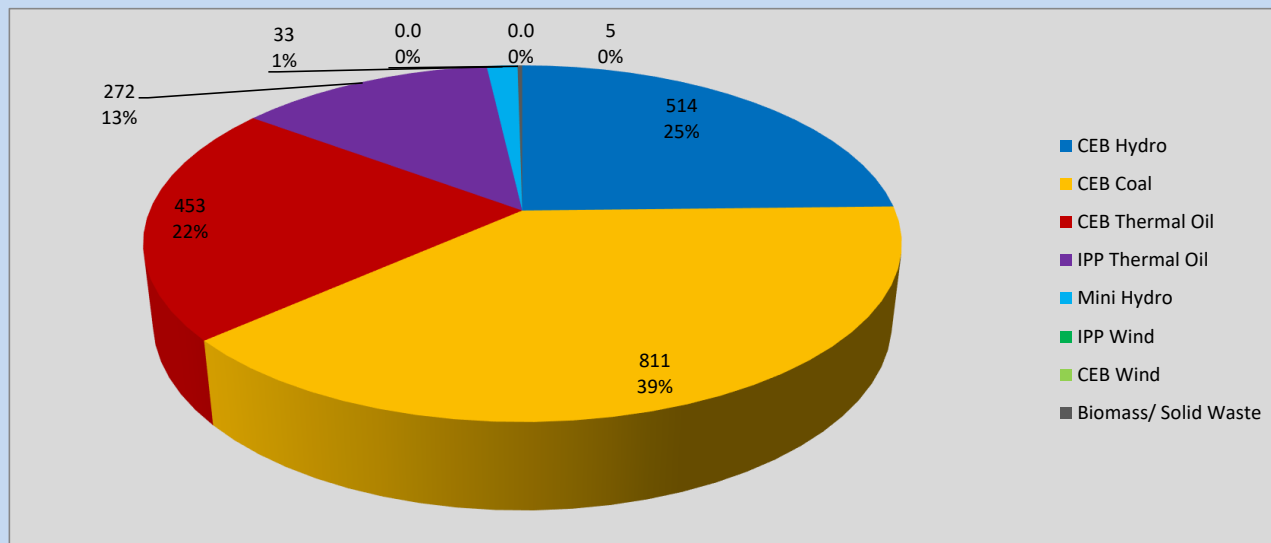
Plant	Installed Capacity	Plant Availability	Night peak Load	Plant Dispatch
	(MW)	(MW)	(MW)	(MWh)
Wimalasurendra	50	50	10	39
Old Laxapana	54	54	25	262
Canyon	60	60	26	290
New Laxapana	100	100	90	1,010
Polpitiya	90	90	21	591
Broadlands	35	35	9	128
Kotmale	201	120	0	0
Victoria	225	140	34	1,022
Randenigala	114	110	0	378
Rantambe	50	50	20	168
Ukuwela	37	20	20	241
Bowatenna	40	38	0	0
Upper Kotmale	150	150	100	689
Nilambe	3	3	0	5
Samanalawewa	120	120	119	951
Kukule	75	75	38	321
Inginiyagala	11	7	6	106
Udawalawe	6	3	3	60
Puttalam Coal I	270	270	271	6,498
Puttalam Coal II	270	270	269	6,469
Puttalam Coal III	270	270	271	6,517
KPS Small GTs	64	16	0	0
KPS GT 7	115	115	114	871
KCCP	161	158	149	3,451
Sapugaskanda A	70	32	32	607
Sapugaskanda B	70	63	62	1,347
Uthura Janani	26	24	24	365
Barge CEB	60	60	44	795
CEB-Hambantota	30	19	17	313
CEB-Mathugama	20	11	11	151
ACE Matara	24	0	0	0
Asia Power	50	0	0	0
Sojitz Kelanitissa	163	0	0	0
West Coast	270	270	272	5,795
Nothern Power	36	0	0	0
ACE Embilipitiya	93	0	0	0
Total	3,483	2,803	2,094	41,069

Plant availability is the availability recorded at 6 am on

April 29, 2023

Contribution to the Night Peak in MW

April 28, 2023

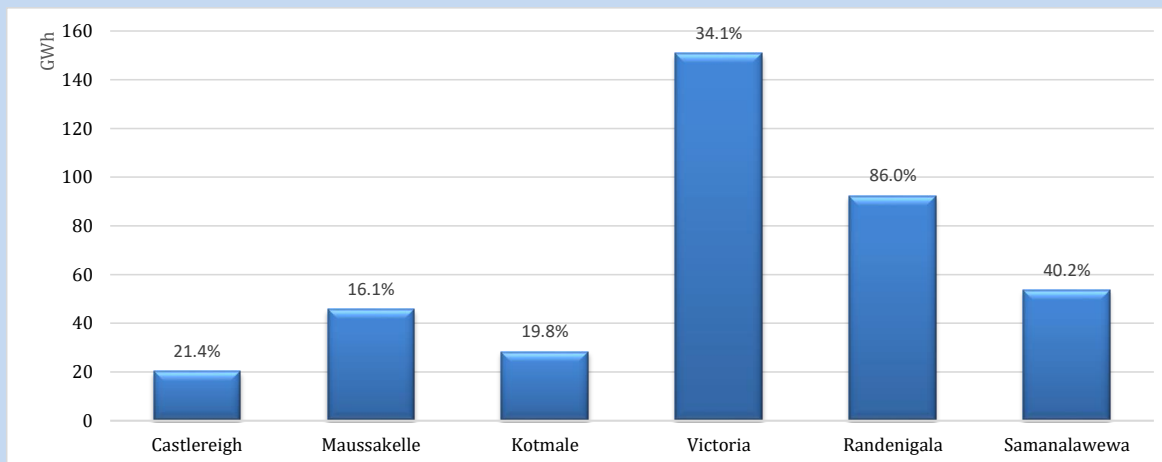


Night Peak*	2,088 MW
Day Peak	1,976 MW
Minimum Demand	1,278 MW

Above figures are excluding contribution from roof top solar, non telemetered solar and mini hydro plants

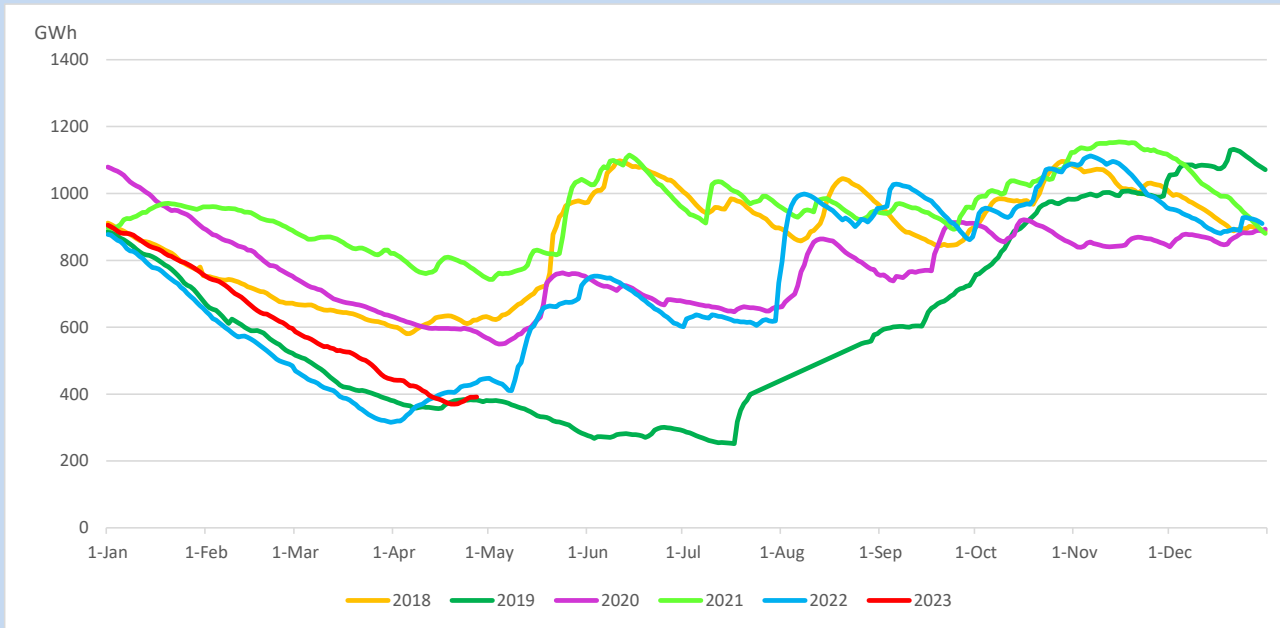
Reservoir Levels -

as at 06.00 Hr on April 29, 2023

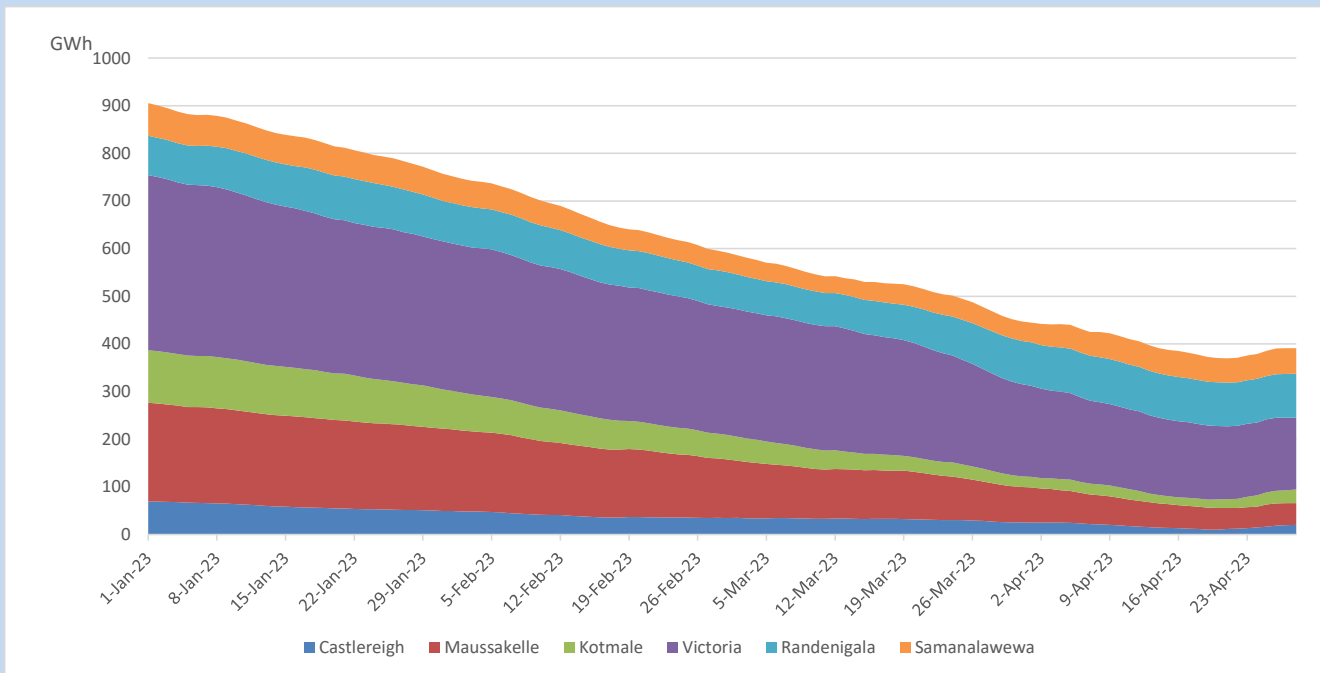


Total Reservoir Level	391.2 GWh
% of Total capacity	32.5%

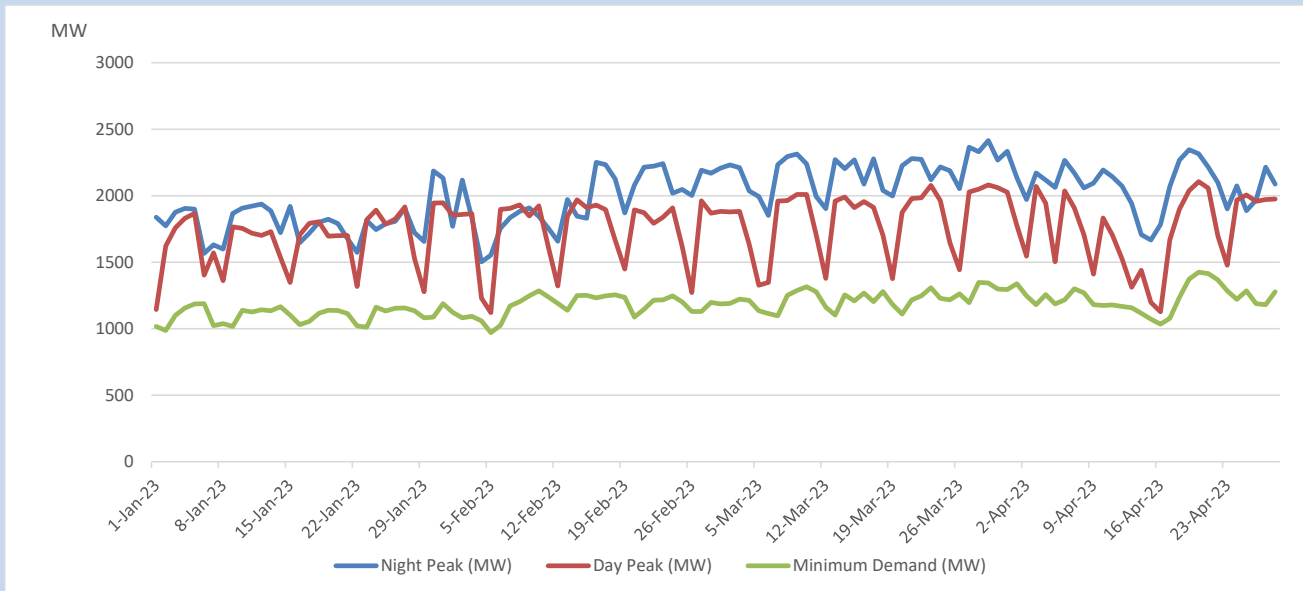
Comparison of Total Reservoir Storage Levels with Past Years



Variation of Major Hydro Reservoir Levels in the current year (GWh)



Variation of Demand during the current year

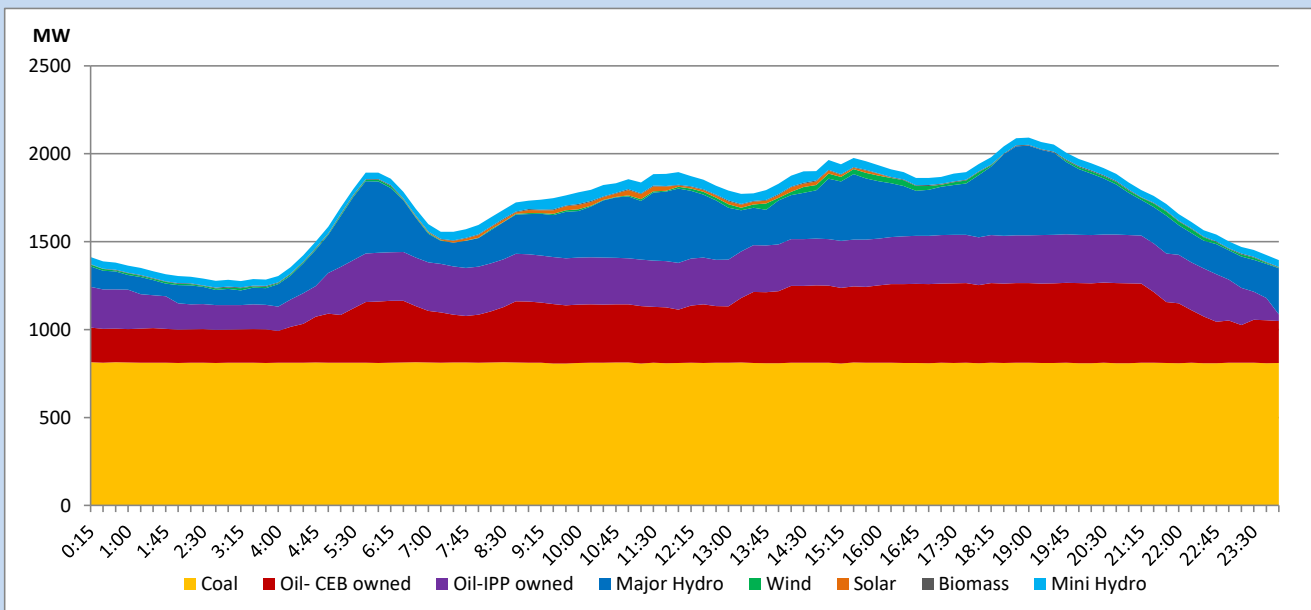


The above figures are excluding contribution from roof top solar, non telemetered solar and mini hydro plants

Daily Load Curve

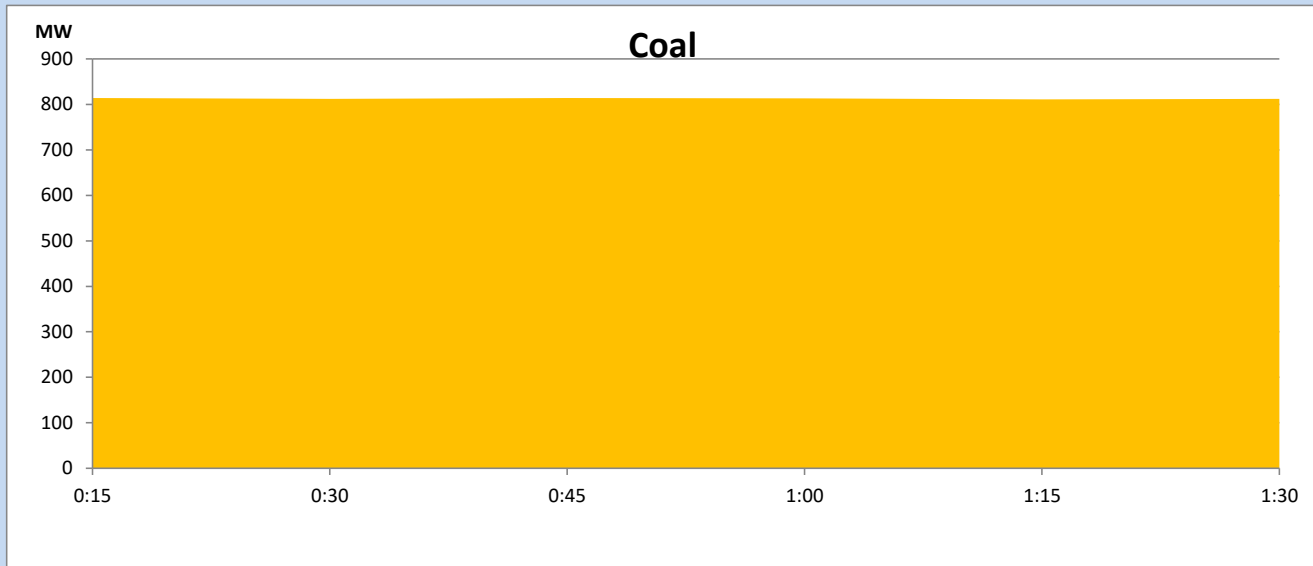
April 28, 2023

Solar and wind data is based on Telemetered Power Stations only



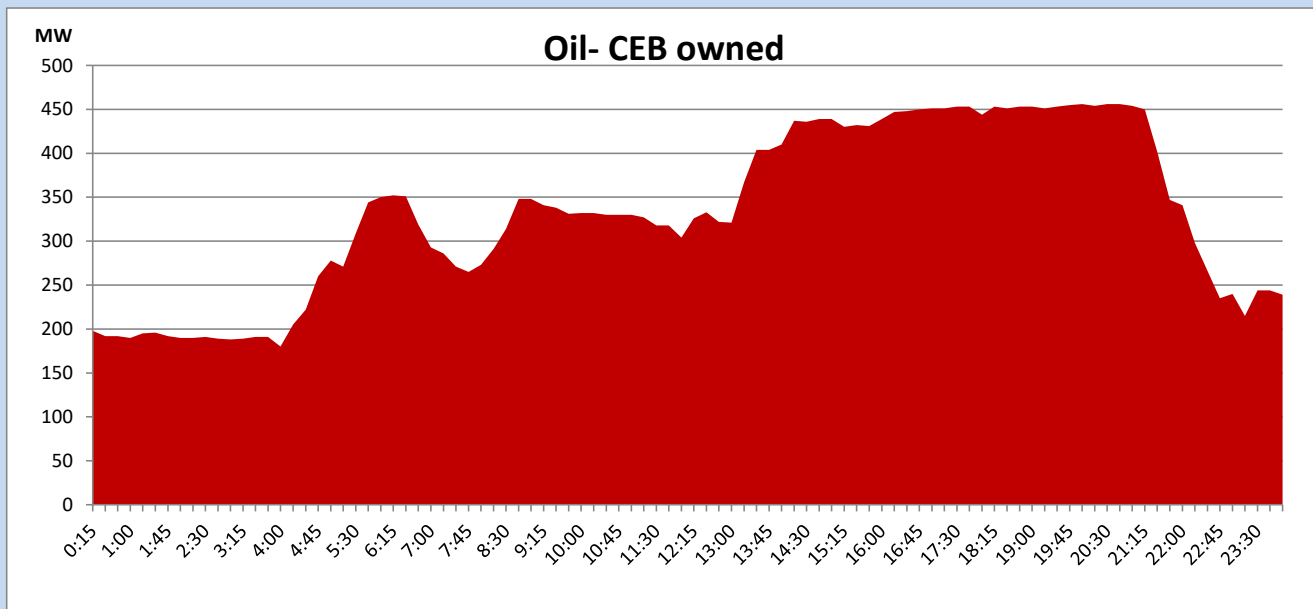
Coal Generation during

April 28, 2023



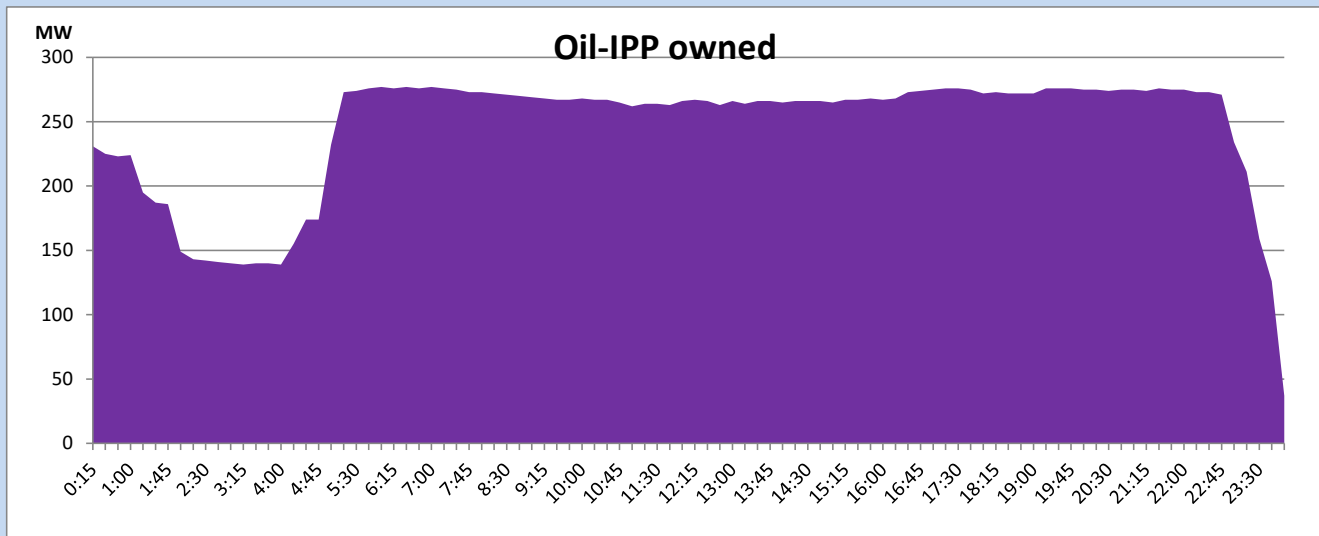
CEB Oil Plant Generation during

April 28, 2023



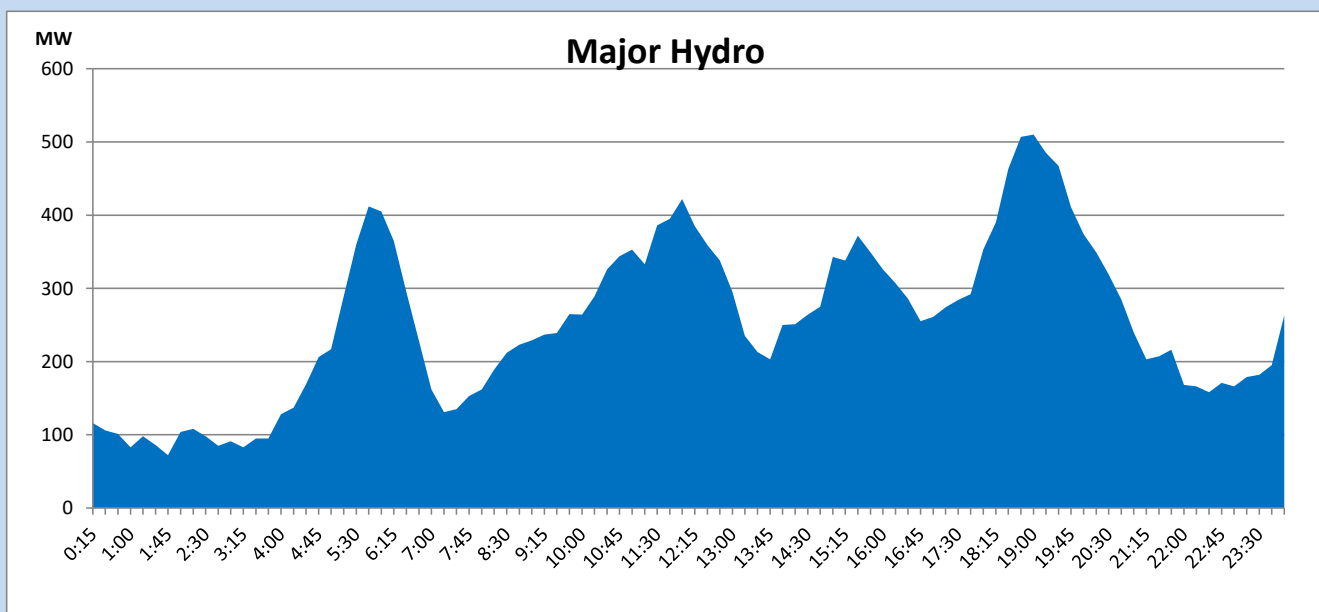
IPP Oil Plant Generation during

April 28, 2023



Major Hydro Generation during

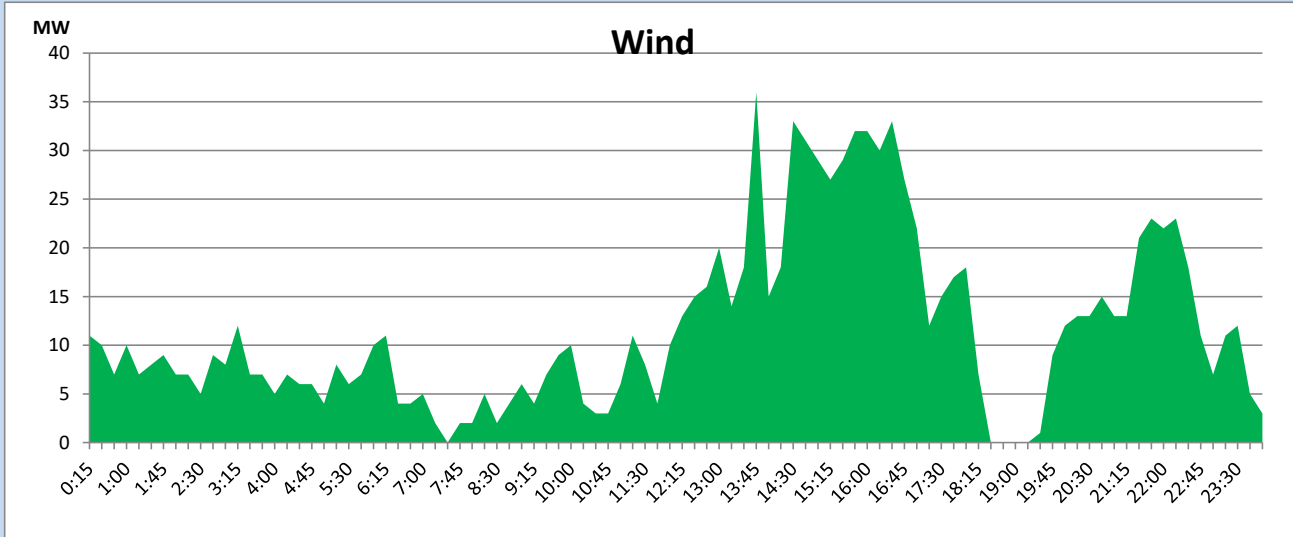
April 28, 2023



Wind Generation during

April 28, 2023

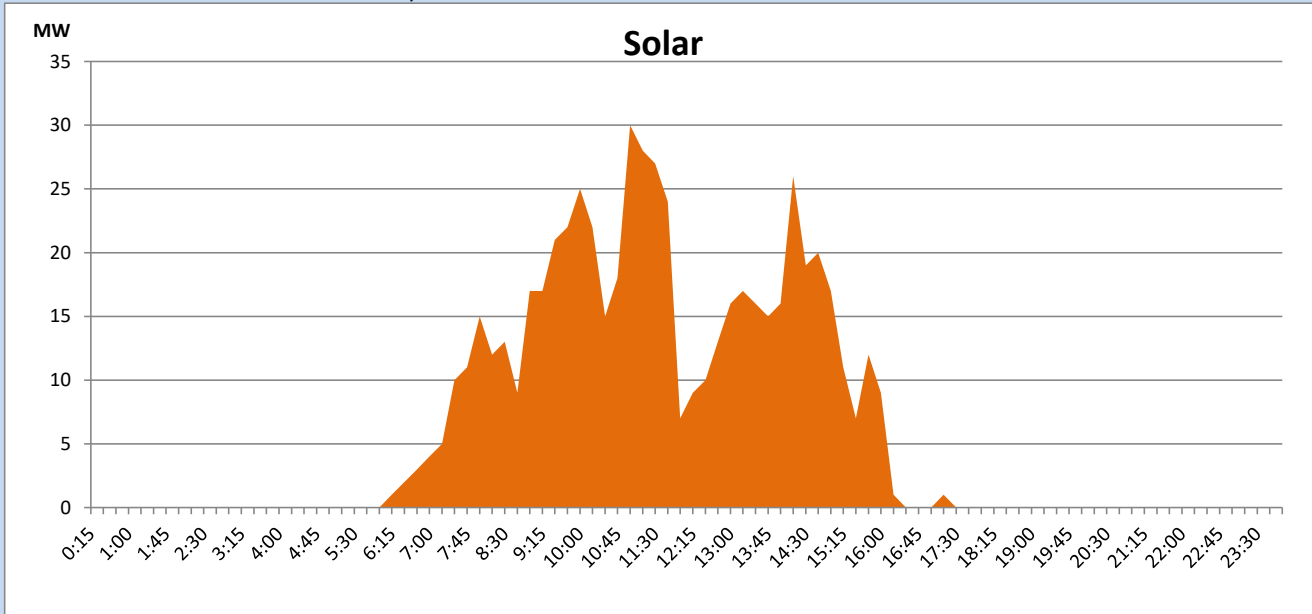
Based on Telemetered Power Stations only



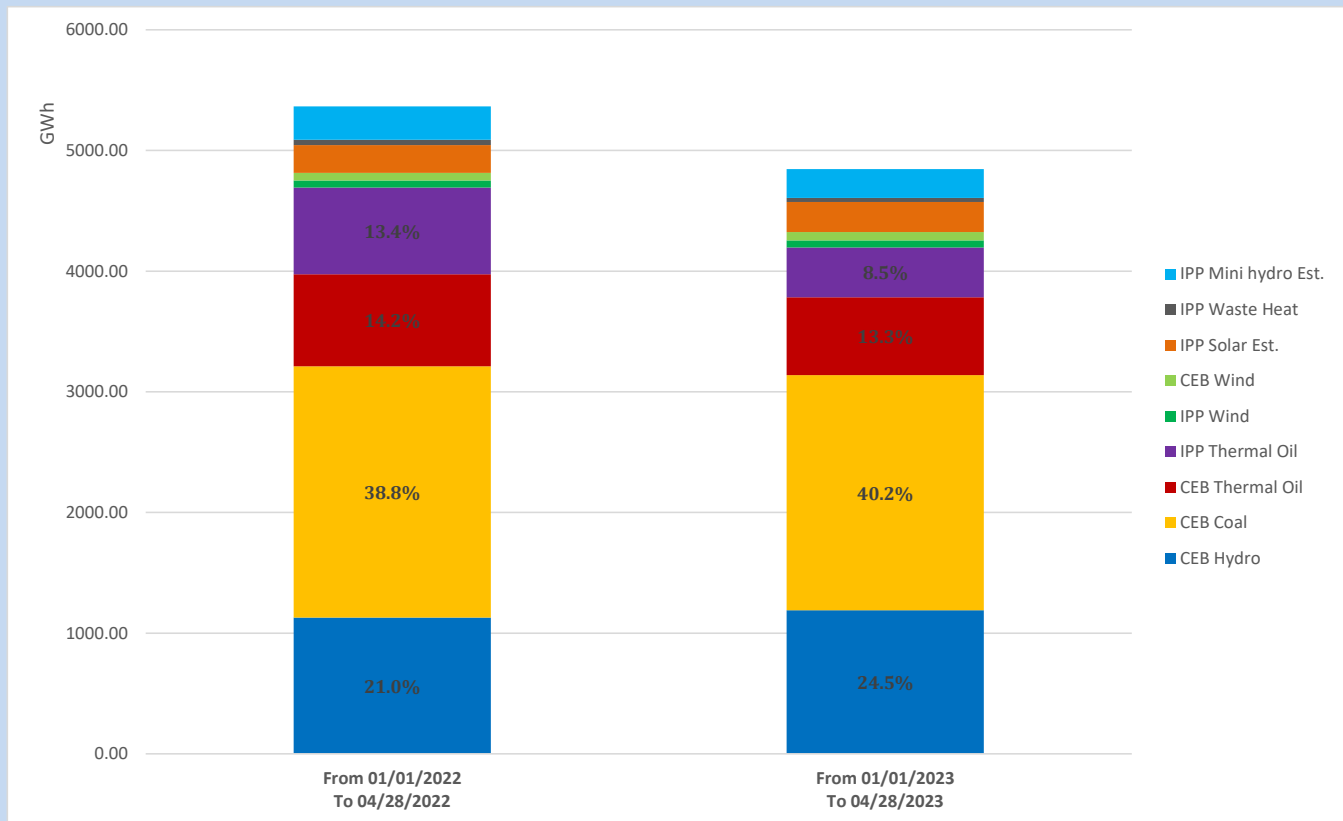
Solar Generation during

April 28, 2023

Based on Telemetered Power Stations only



Cumulative Dispatch Comparison with Last Year



The above figures are including contribution from roof top solar, non telemetered solar and mini hydro plants

Thermal Plant Fuel types

Power Station	Primary Fuel
CEB Thermal	
Sapugaskanda 1	Heavy Fuel
Sapugaskanda 2	Heavy Fuel
Kelanitissa Small Gas Turbines	Auto Diesel
GT 7 - Kelanitissa	Auto Diesel
Kelanitissa CCY	Naphtha or Diesel
Lakvijaya 1	Coal
Lakvijaya 2	Coal
Lakvijaya 3	Coal
Uthuru Janani	Heavy Fuel
Barge CEB	Heavy Fuel

Power Station	Primary Fuel
Private Thermal	
West Coast	Auto Diesel / Heavy Fuel

Major Incidents reported during the day

April 28, 2023

- 1) Embilipitiya – Matara 132kV cct tripped and A/R from both ends at 07:33hrs due to the operation of distance protection. At the same time KPS Hambanthota DPP tripped rejecting 17MW from the system. Hambanthota DPP resumed generation at 07:45hrs.
- 2) KPS GT 07 failed to synchronize at 10:00hrs due to a failure in diesel line. GT 07 synchronized at 13:05hrs and reached 80MW at 13:26hrs.
- 3) KPS Mathugama DPP tripped at 15:00hrs rejecting 10.7MW from the system. Mathugama DPP resumed generation at 15:58hrs.
- 4) Mannar – Nadukuda 220kV cct 02 which was manually switched off on 18.04.2023, was normalized at 15:37hrs.