

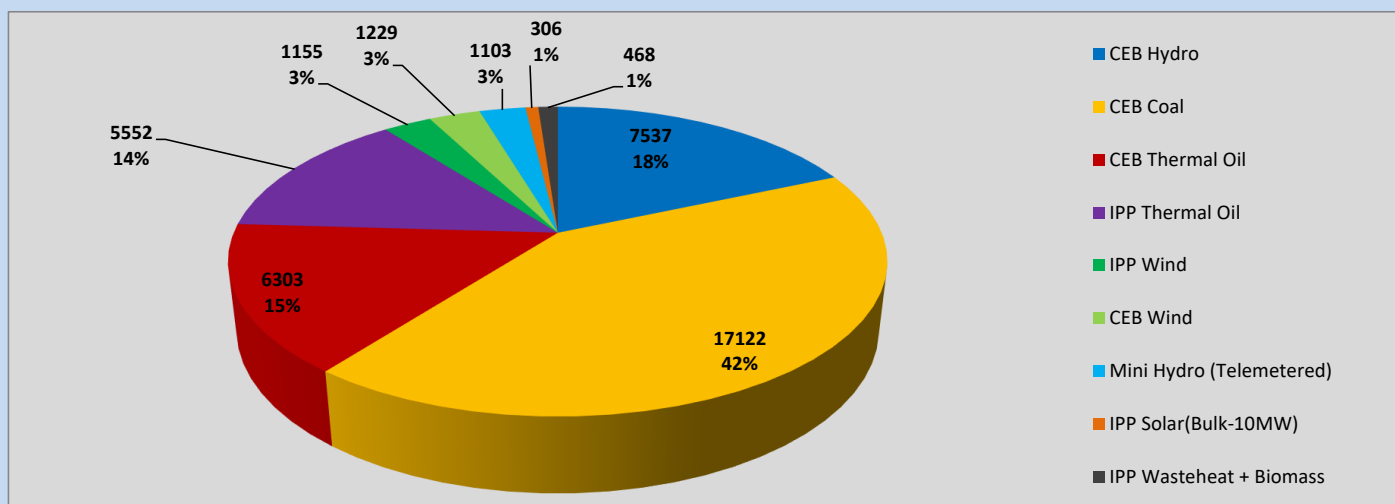
Generation and Reservoirs Statistics

May 27, 2023



PUBLIC UTILITIES COMMISSION OF SRI LANKA

Daily Generation Mix in MWh



Total Generation (Excluding estimated figures) =

40,775 MWh

Estimated figures of CEB generation report

Estimated unserved energy = 0.00 GWh

Estimated Mini Hydro (Non telemetered) = 2887 MWh

Estimated IPP Solar PV (Bulk 1-10MW) = 304 MWh

Estimated Solar Roof Top PV = 1920 MWh

Cumulative Dispatch

Following data excludes the contribution from roof top solar, non telemetered solar and mini hydro plants

For Current Month

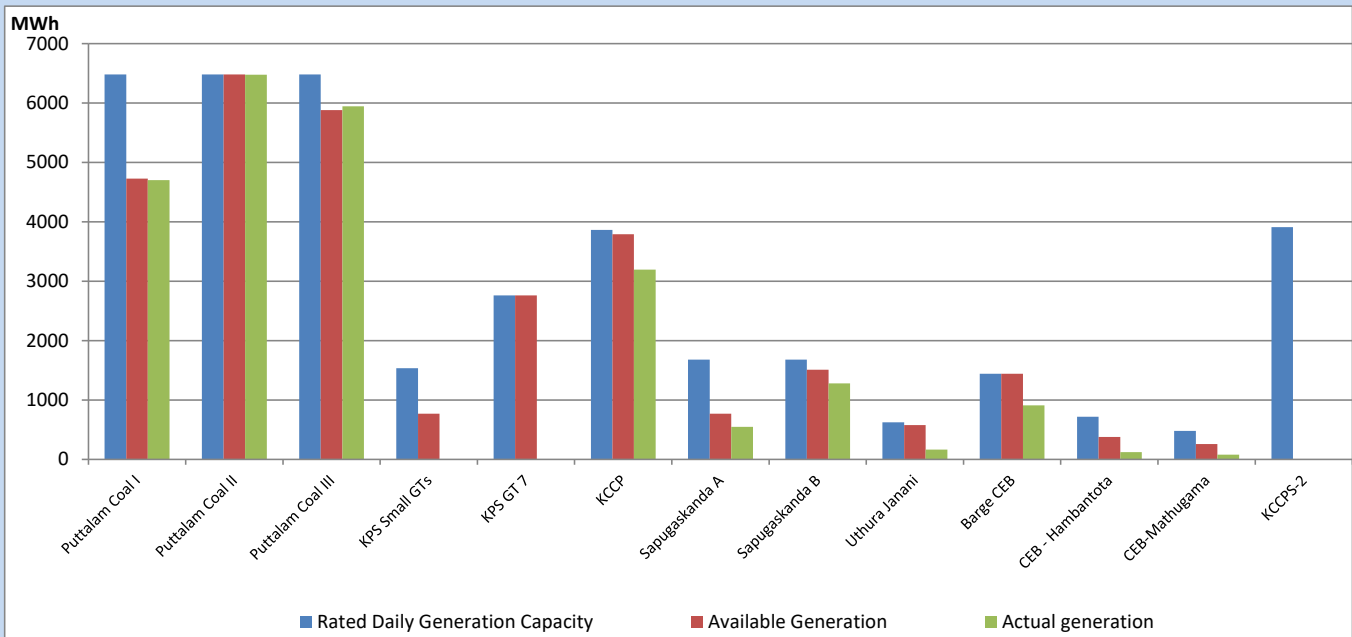
Category	Dispatch (GWh)	
CEB Hydro	235	22.63%
CEB Coal	440	42.41%
CEB Thermal Oil	154	14.81%
IPP Thermal	99	9.58%
SPP Wind	29	2.82%
CEB Wind	35	3.38%
Mini Hydro (Telemetered)	27	2.62%
IPP Solar (Bulk-10MW)	7	0.72%
IPP Wasteheat + BMP	11	1.02%
Total	1,037	

For Current Year

Category	Dispatch (GWh)	
CEB Hydro	1,436	25.69%
CEB Coal	2,427	43.40%
CEB Thermal Oil	809	14.47%
IPP Thermal	517	9.25%
SPP Wind	87	1.56%
CEB Wind	105	1.88%
Mini Hydro (Telemetered)	123	2.19%
IPP Solar (Bulk-10MW)	42	0.75%
IPP Wasteheat	45	0.81%
Total	5,591	

CEB owned Thermal Plant Dispatch

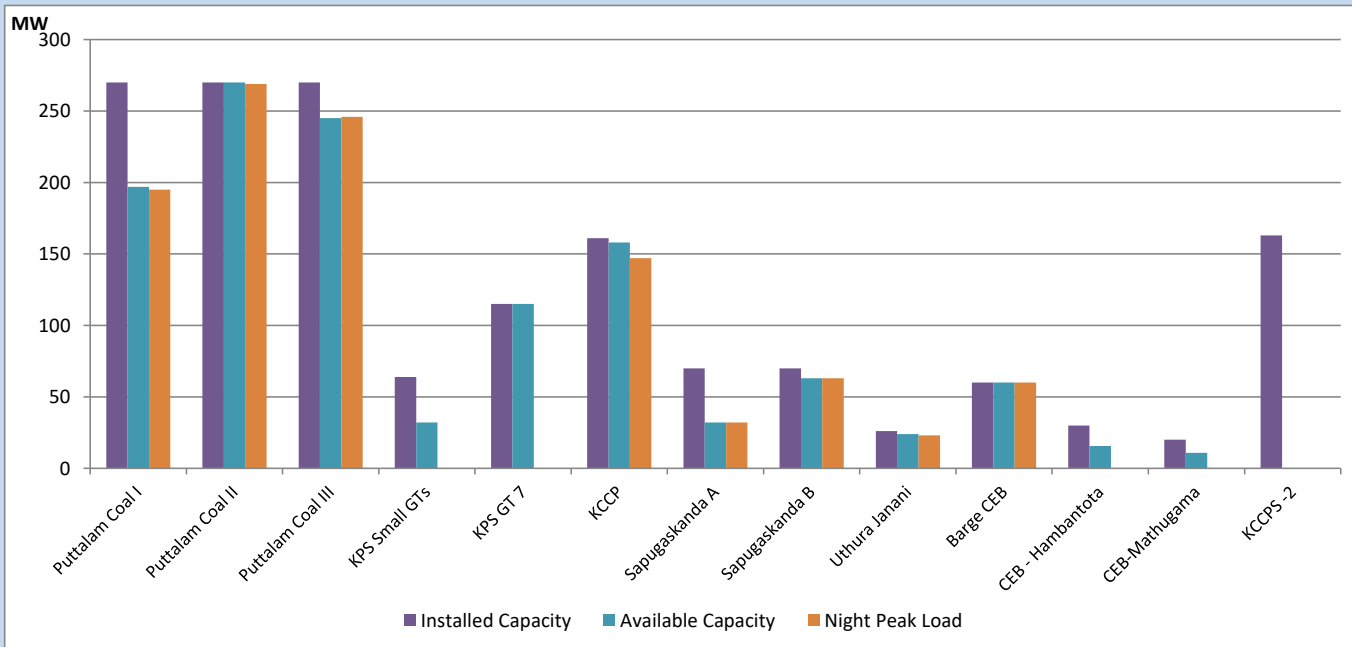
May 27, 2023



Available Generation is estimated based on plant availability at 6.00am on

May 28, 2023

CEB owned Thermal Plant Loading at the Night Peak

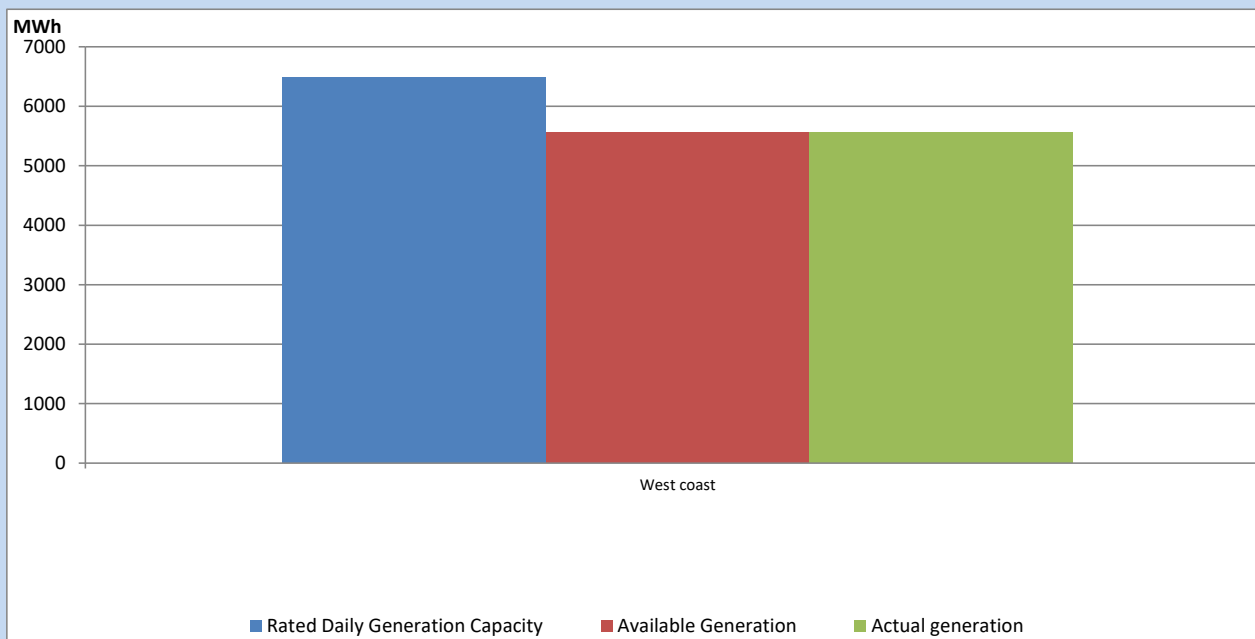


Note-
Plant availability is recorded at 6.00 am on

May 28, 2023

IPP owned Thermal Plant Dispatch

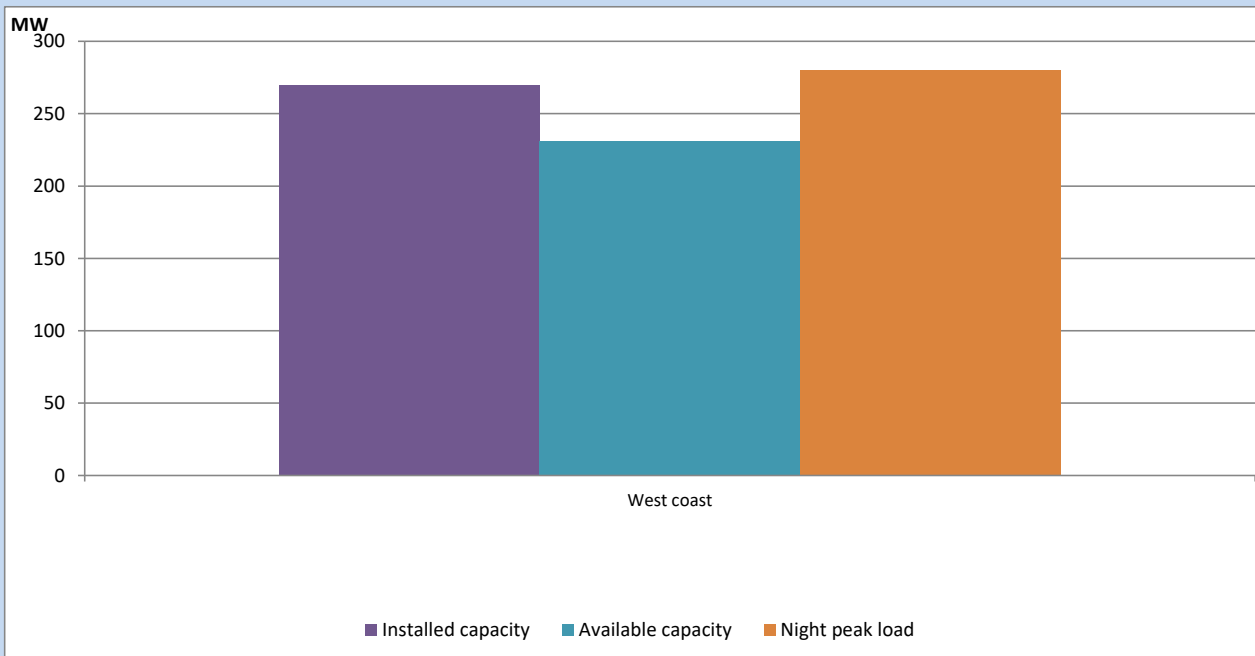
May 27, 2023



Available Generation is estimated based on plant availability at 6.00am on

May 28, 2023

IPP owned Thermal Plant Loading at the Night Peak

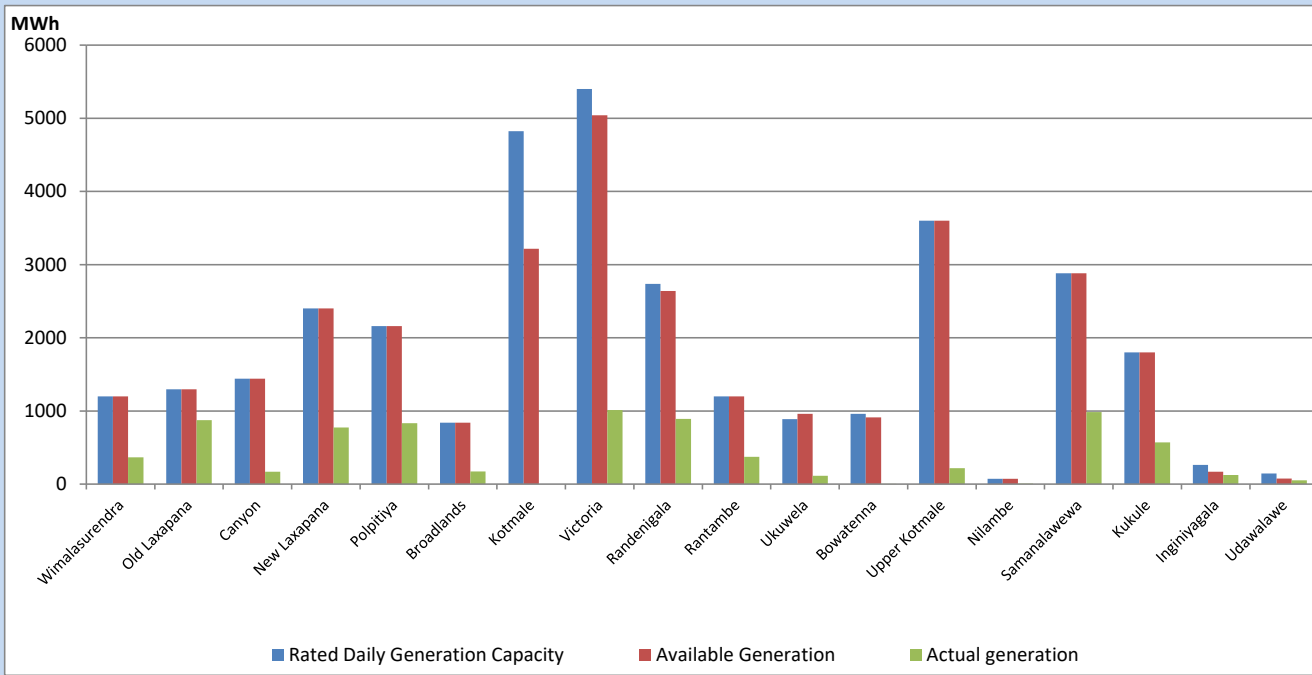


Note- Plant availability is recorded at 6.00 am on

May 28, 2023

Major Hydro Plant Dispatch

May 27, 2023

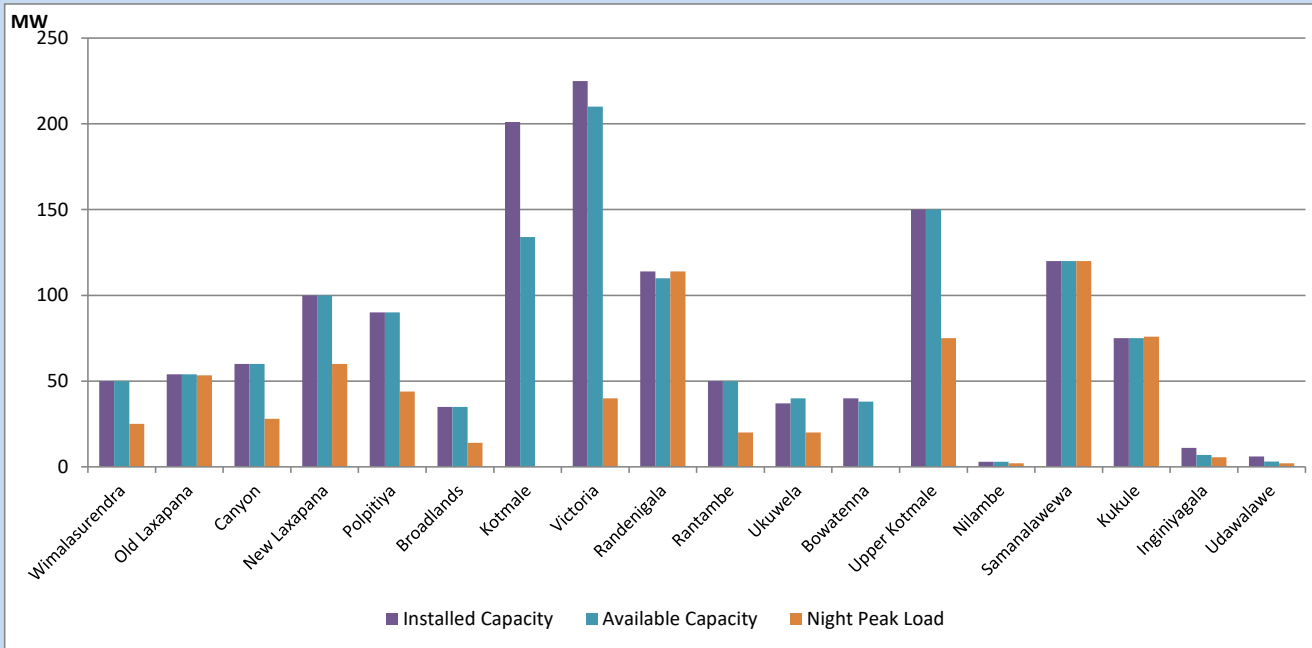


Available Generation is estimated based on plant availability at 6.00am on
Broadlands power plant is operating in the Commissioning Stage

May 28, 2023

Major Hydro Plant Loading at Night Peak

May 27, 2023



Note- Plant availability is recorded at 6.00 am on
Broadlands power plant is operating in the Commissioning Stage

May 28, 2023

Summary of Major Plant performance

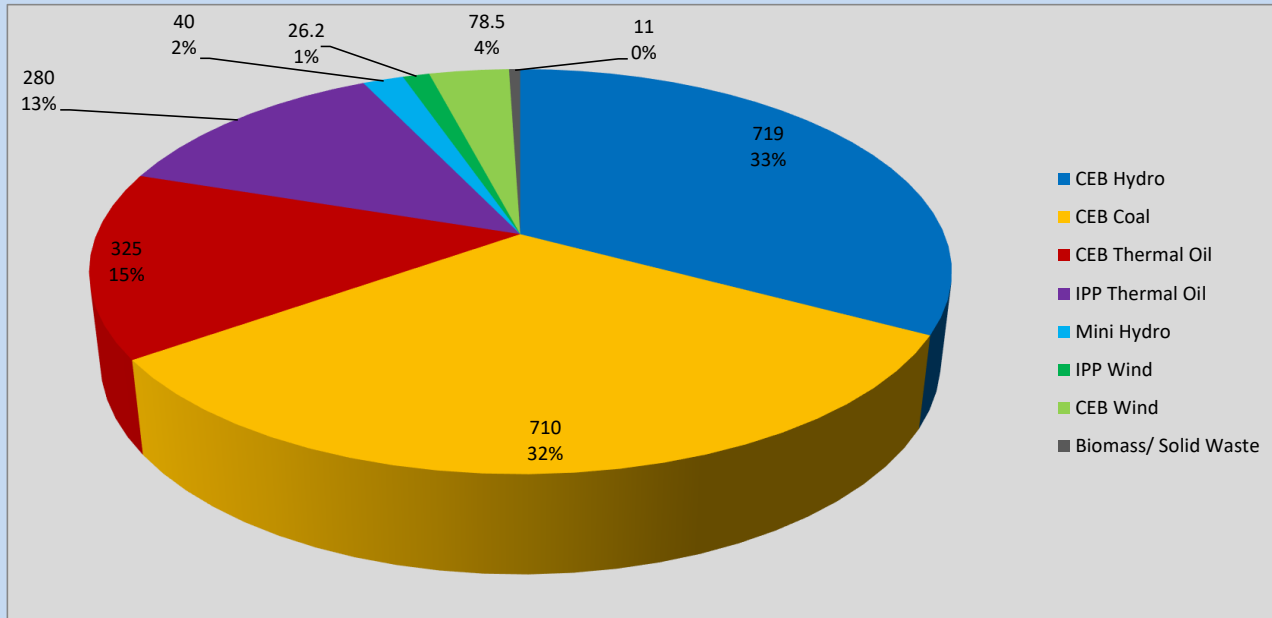
Plant	Installed Capacity	Plant Availability	Night peak Load	Plant Dispatch
	(MW)	(MW)	(MW)	(MWh)
Wimalasurendra	50	50	25	365
Old Laxapana	54	54	53	874
Canyon	60	60	28	170
New Laxapana	100	100	60	773
Polpitiya	90	90	44	834
Broadlands	35	35	14	173
Kotmale	201	134	0	0
Victoria	225	210	40	1,012
Randenigala	114	110	114	893
Rantambe	50	50	20	372
Ukuwela	37	40	20	113
Bowatenna	40	38	0	3
Upper Kotmale	150	150	75	218
Nilambe	3	3	2	7
Samanalawewa	120	120	120	983
Kukule	75	75	76	571
Inginiyagala	11	7	6	123
Udawalawe	6	3	2	53
Puttalam Coal I	270	197	195	4,703
Puttalam Coal II	270	270	269	6,476
Puttalam Coal III	270	245	246	5,943
KPS Small GTs	64	32	0	0
KPS GT 7	115	115	0	0
KCCP	161	158	147	3,194
Sapugaskanda A	70	32	32	547
Sapugaskanda B	70	63	63	1,282
Uthura Janani	26	24	23	166
Barge CEB	60	60	60	911
CEB-Hambantota	30	16	0	122
CEB-Mathugama	20	11	0	81
ACE Matara	24	0	0	0
Asia Power	50	0	0	0
KCCPS -2	163	0	0	0
West Coast	270	231	280	5,552
Nothern Power	36	0	0	0
ACE Embilipitiya	93	0	0	0
Total	3,483	2,783	2,170	40,775

Plant availability is the availability recorded at 6 am on

May 28, 2023

Contribution to the Night Peak in MW

May 27, 2023

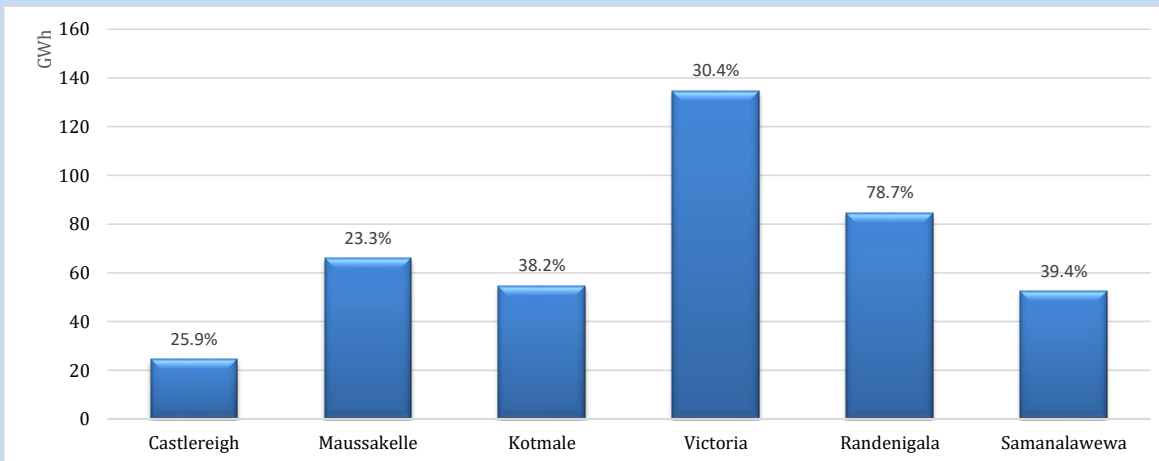


Night Peak*	2,190 MW
Day Peak Maximum Demand	1,751 MW
Day Peak Minimum Demand	1,555 MW
Off Peak Minimum Demand	1,371 MW

Above figures are excluding contribution from roof top solar, non telemetered solar and mini hydro plants

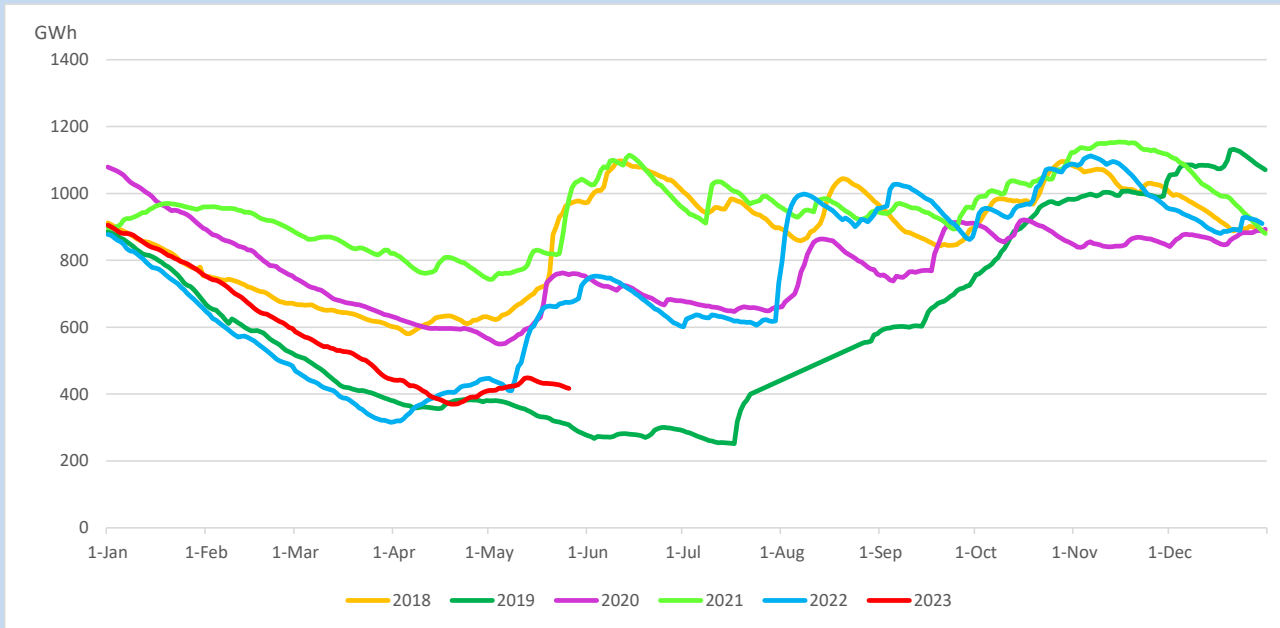
Reservoir Levels -

as at 06.00 Hr on May 28, 2023

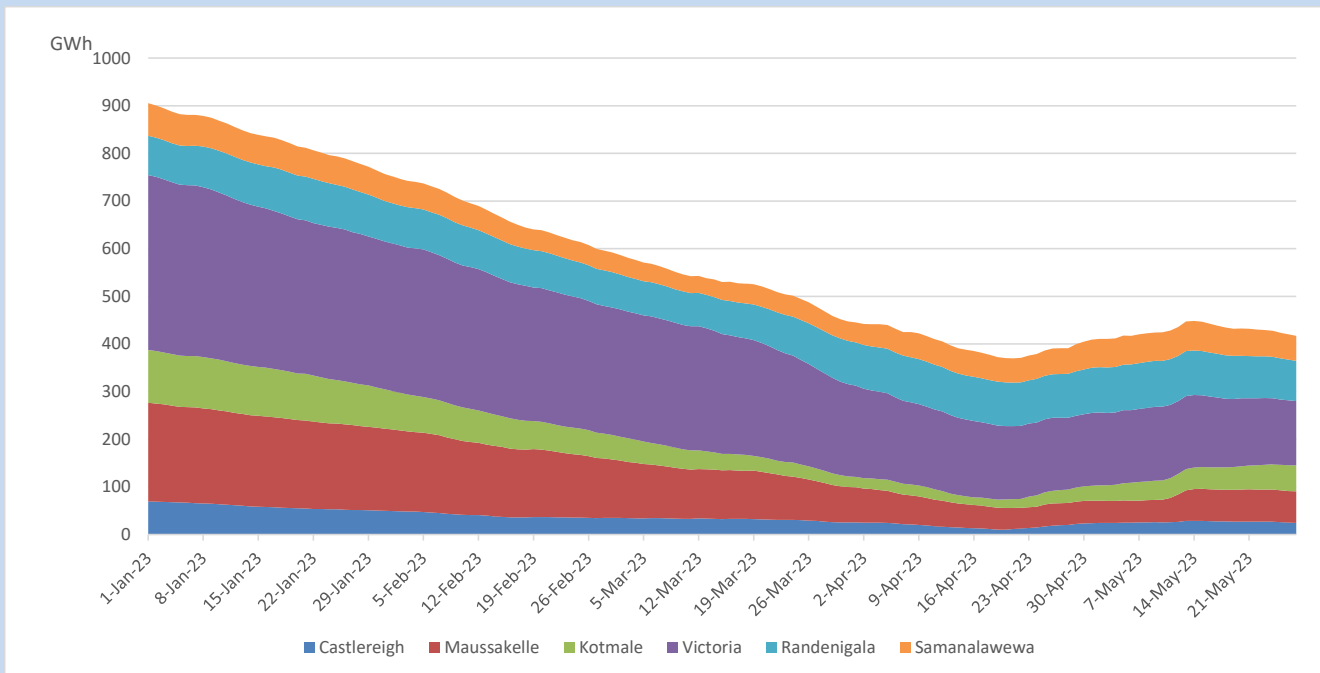


Total Reservoir Level	417 GWh
% of Total capacity	34.6%

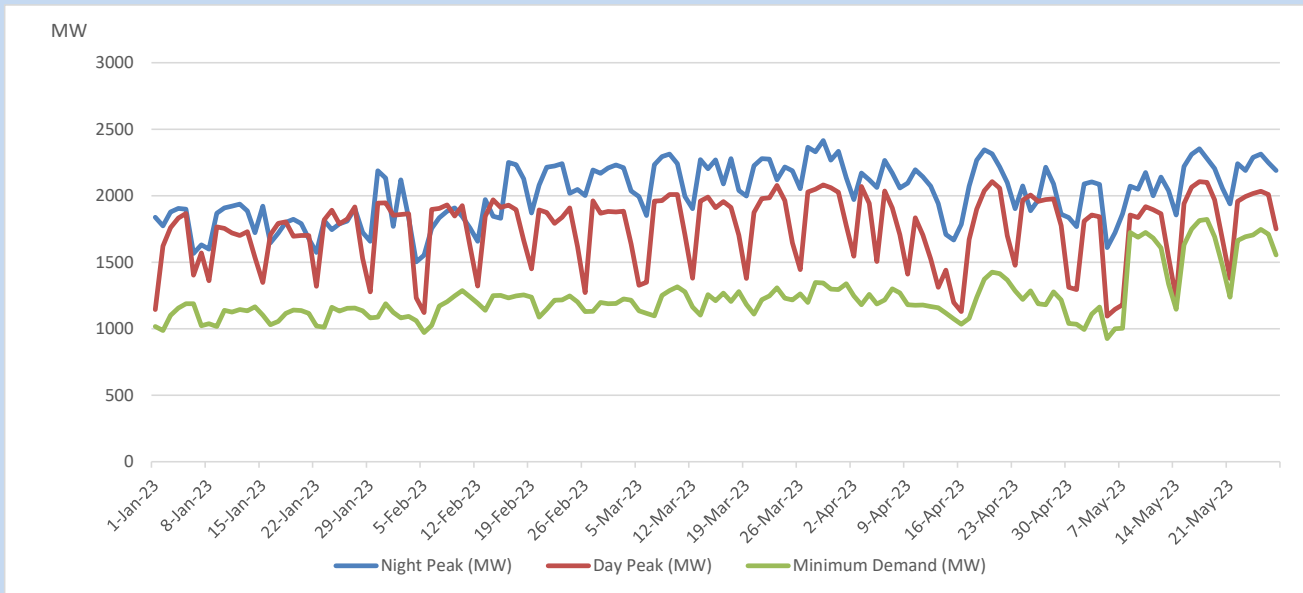
Comparison of Total Reservoir Storage Levels with Past Years



Variation of Major Hydro Reservoir Levels in the current year (GWh)



Variation of Demand during the current year

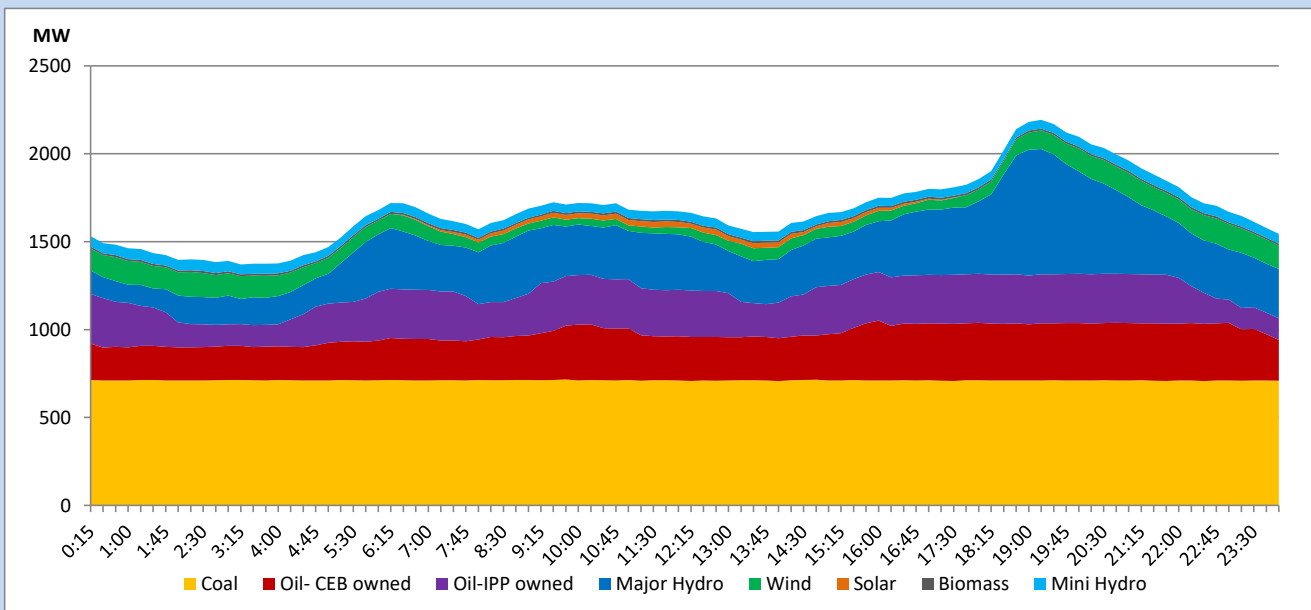


The above figures are excluding contribution from roof top solar, non telemetered solar and mini hydro plants

Daily Load Curve

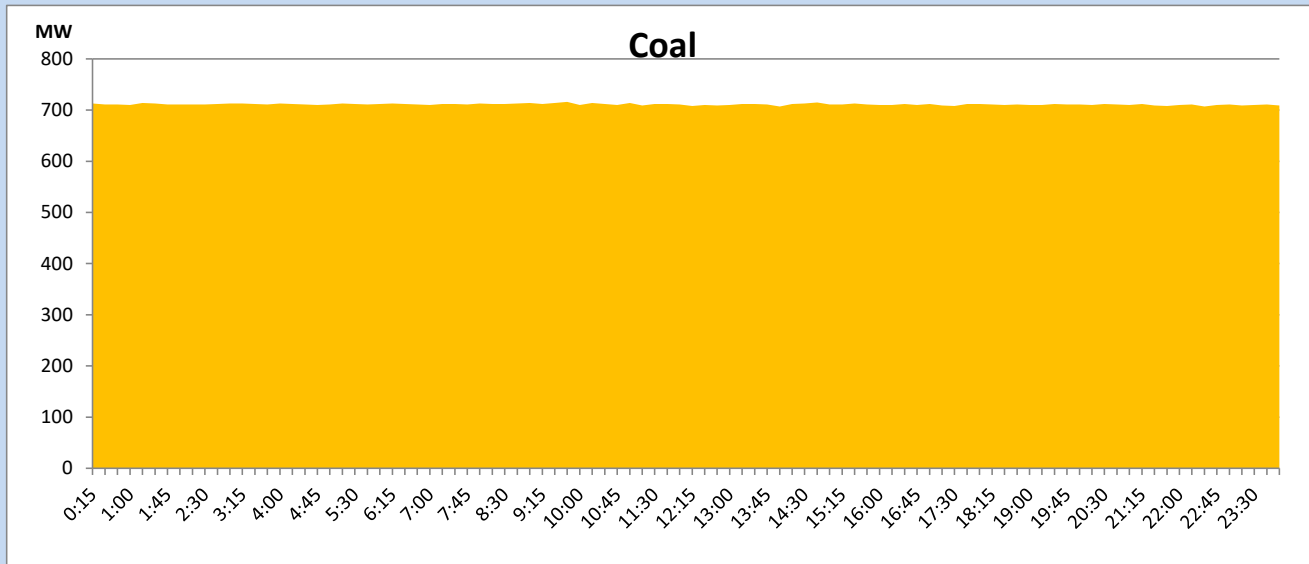
May 27, 2023

Solar and wind data is based on Telemetered Power Stations only



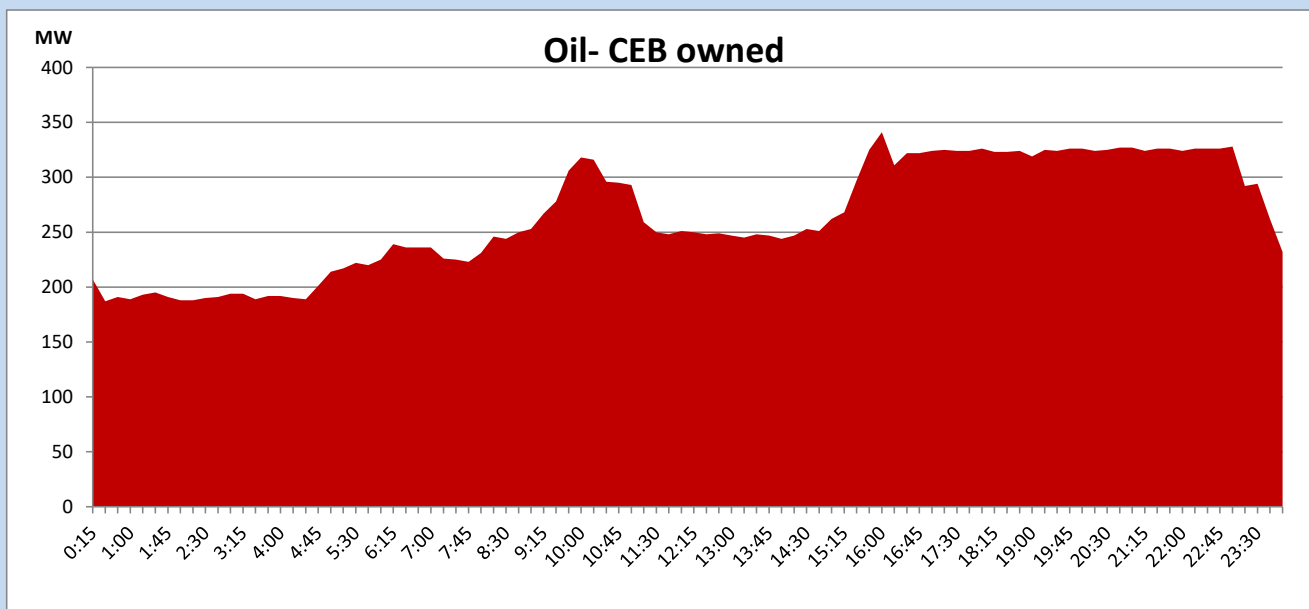
Coal Generation during

May 27, 2023



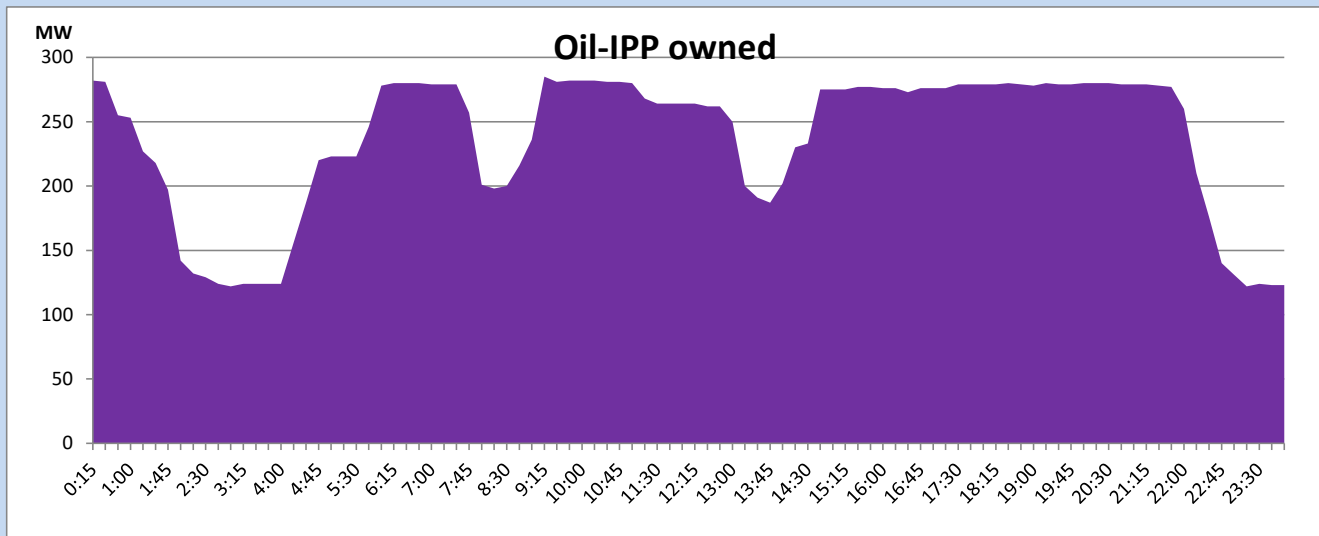
CEB Oil Plant Generation during

May 27, 2023



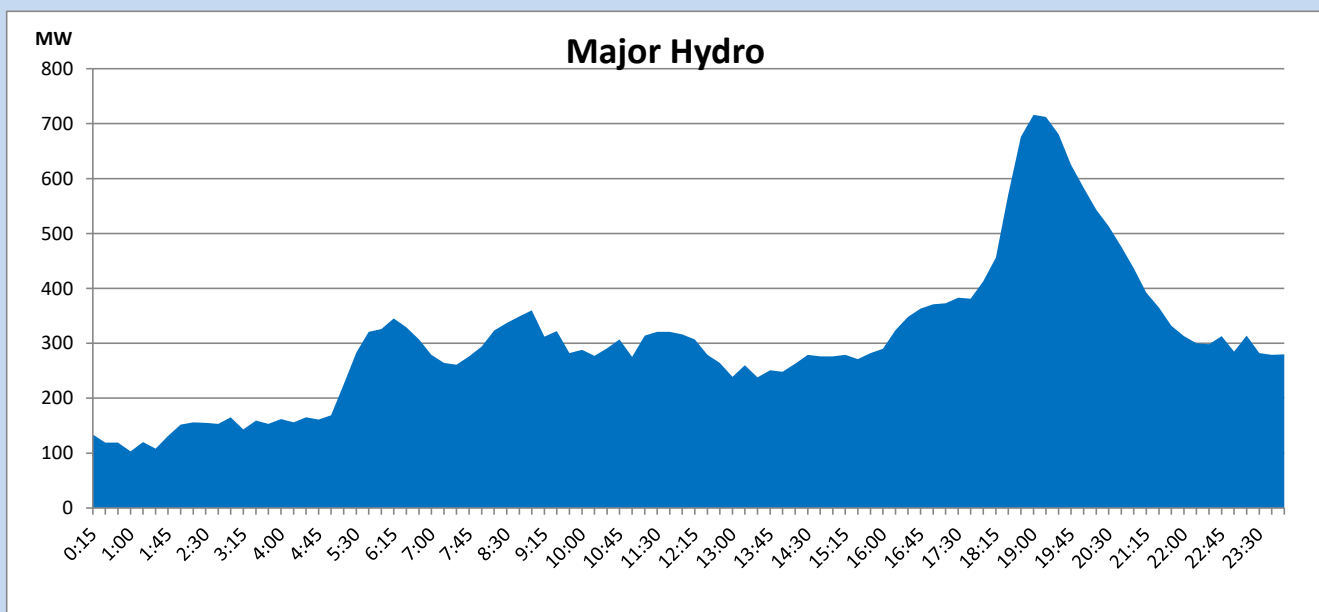
IPP Oil Plant Generation during

May 27, 2023



Major Hydro Generation during

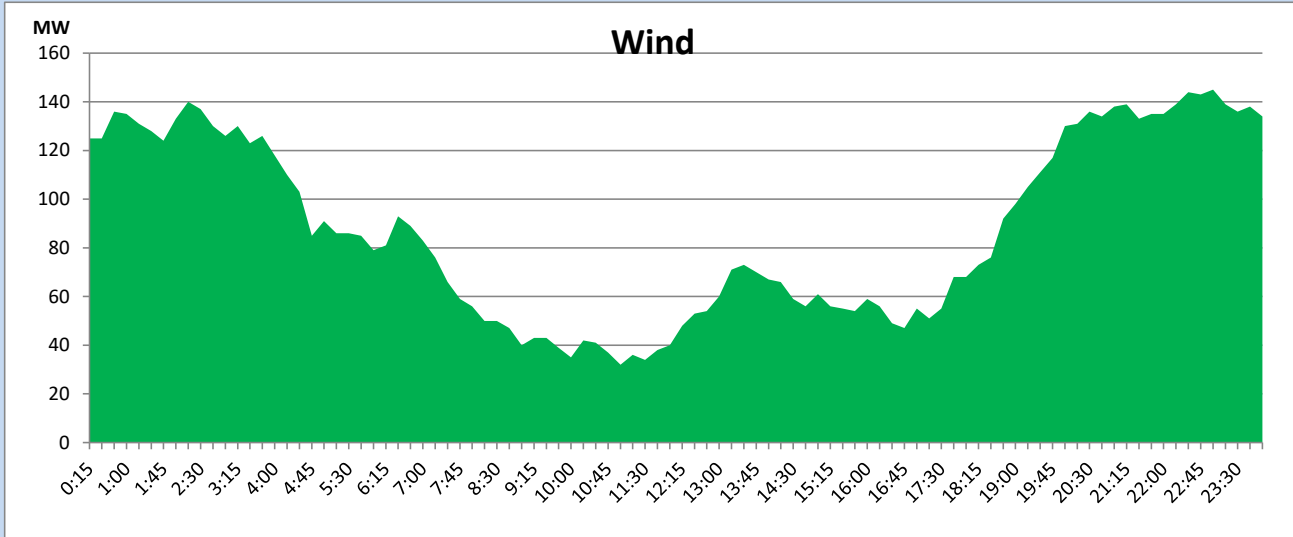
May 27, 2023



Wind Generation during

May 27, 2023

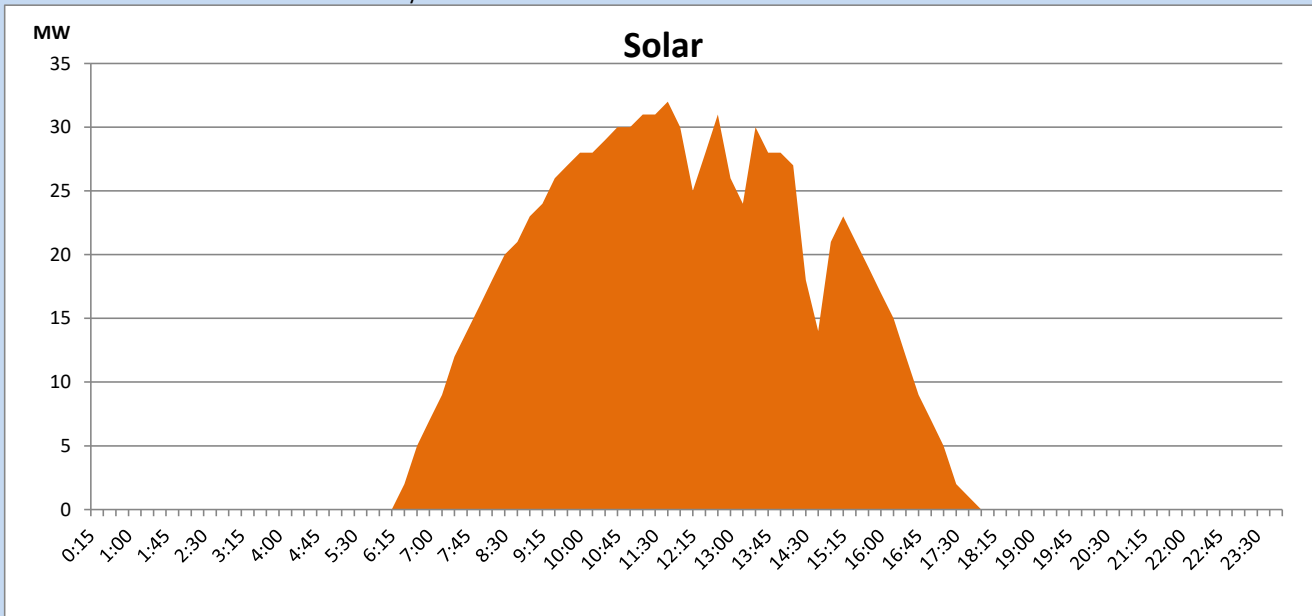
Based on Telemetered Power Stations only



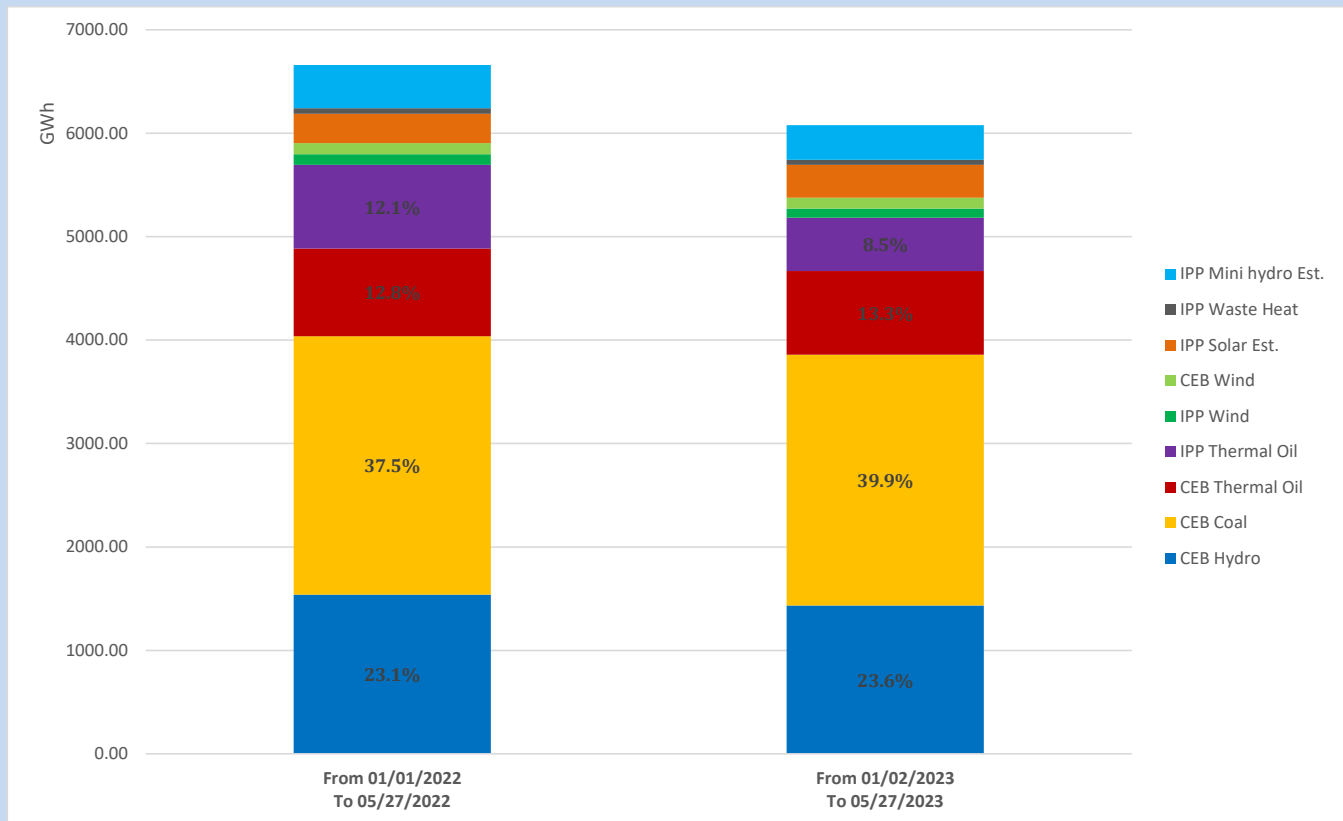
Solar Generation during

May 27, 2023

Based on Telemetered Power Stations only



Cumulative Dispatch Comparison with Last Year



The above figures are including contribution from roof top solar, non telemetered solar and mini hydro plants

Thermal Plant Fuel types

Power Station	Primary Fuel
CEB Thermal	
Sapugaskanda 1	Heavy Fuel
Sapugaskanda 2	Heavy Fuel
Kelanitissa Small Gas Turbines	Auto Diesel
GT 7 - Kelanitissa	Auto Diesel
Kelanitissa CCY	Naphtha or Diesel
Lakvijaya 1	Coal
Lakvijaya 2	Coal
Lakvijaya 3	Coal
Uthuru Janani	Heavy Fuel
Barge CEB	Heavy Fuel
KCCPS -2	Auto Diesel

Power Station	Primary Fuel
Private Thermal	
West Coast	Auto Diesel / Heavy Fuel

Major Incidents reported during the day

May 27, 2023

1) Upper Kothmale unit 02 made a forced shutdown at 20:16hrs due to a leak in the transformer cooling water system. Upper Kothmale unit 02 was made available at 21:23hrs.