

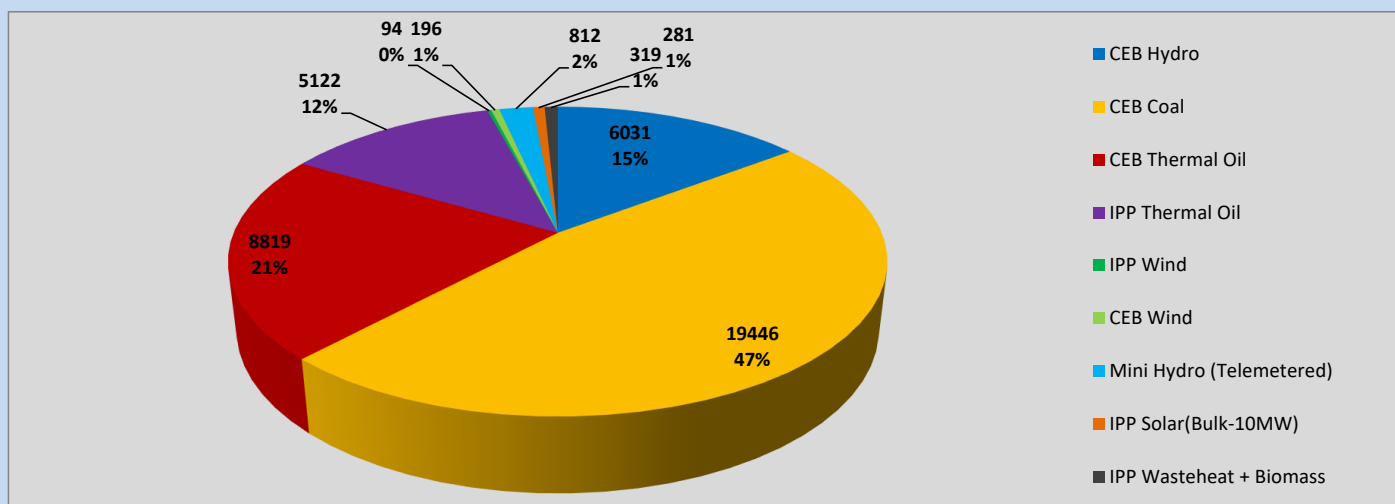
# Generation and Reservoirs Statistics

April 27, 2023



PUBLIC UTILITIES COMMISSION OF SRI LANKA

## Daily Generation Mix in MWh



Total Generation (Excluding estimated figures) =

41,120 MWh

### Estimated figures of CEB generation report

Estimated unserved energy = 0.00 GWh  
 Estimated Mini Hydro (Non telemetered) = 1568 MWh  
 Estimated IPP Solar PV (Bulk 1-10MW) = 304 MWh  
 Estimated Solar Roof Top PV = 1640 MWh

## Cumulative Dispatch

Following data excludes the contribution from roof top solar, non telemetered solar and mini hydro plants

### For Current Month

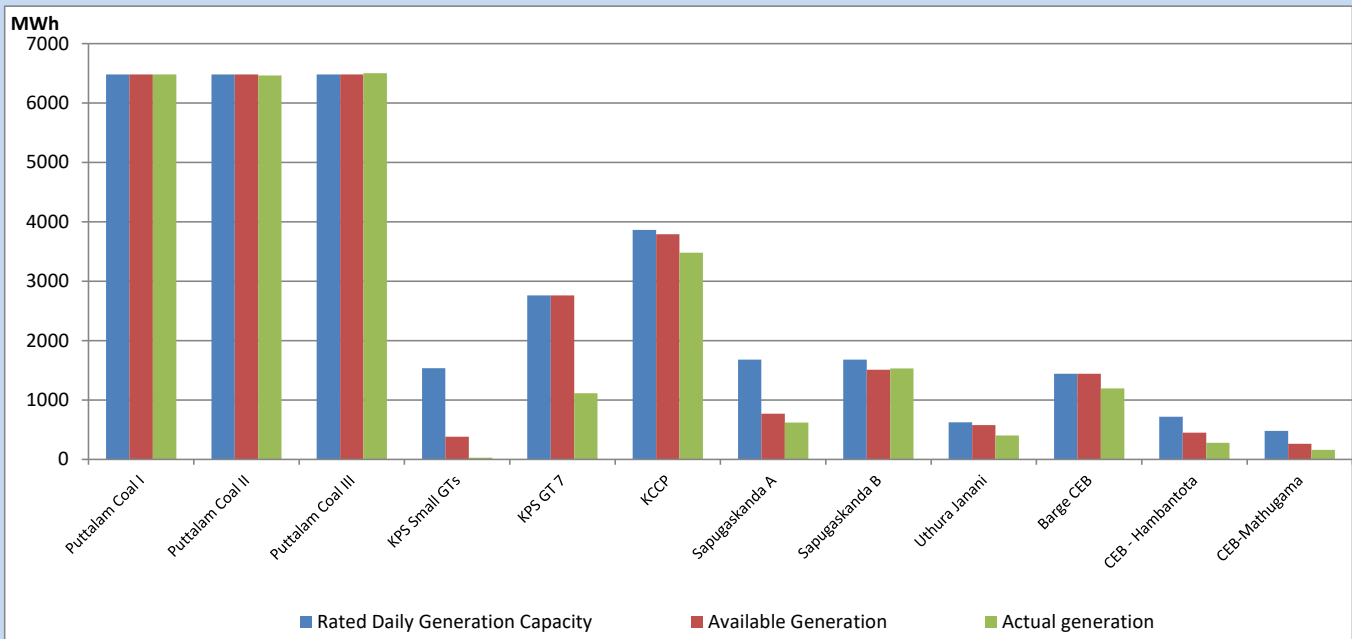
Category	Dispatch (GWh)	Percentage
CEB Hydro	262	25.42%
CEB Coal	407	39.55%
CEB Thermal Oil	168	16.30%
IPP Thermal	137	13.34%
SPP Wind	7	0.64%
CEB Wind	9	0.91%
Mini Hydro (Telemetered)	23	2.26%
IPP Solar (Bulk-10MW)	8	0.80%
IPP Wasteheat + BMP	8	0.78%
<b>Total</b>	<b>1,029</b>	

### For Current Year

Category	Dispatch (GWh)	Percentage
CEB Hydro	1,183	26.61%
CEB Coal	1,930	43.41%
CEB Thermal Oil	638	14.35%
IPP Thermal	407	9.16%
SPP Wind	58	1.29%
CEB Wind	70	1.57%
Mini Hydro (Telemetered)	92	2.07%
IPP Solar (Bulk-10MW)	34	0.76%
IPP Wasteheat	34	0.77%
<b>Total</b>	<b>4,445</b>	

## CEB owned Thermal Plant Dispatch

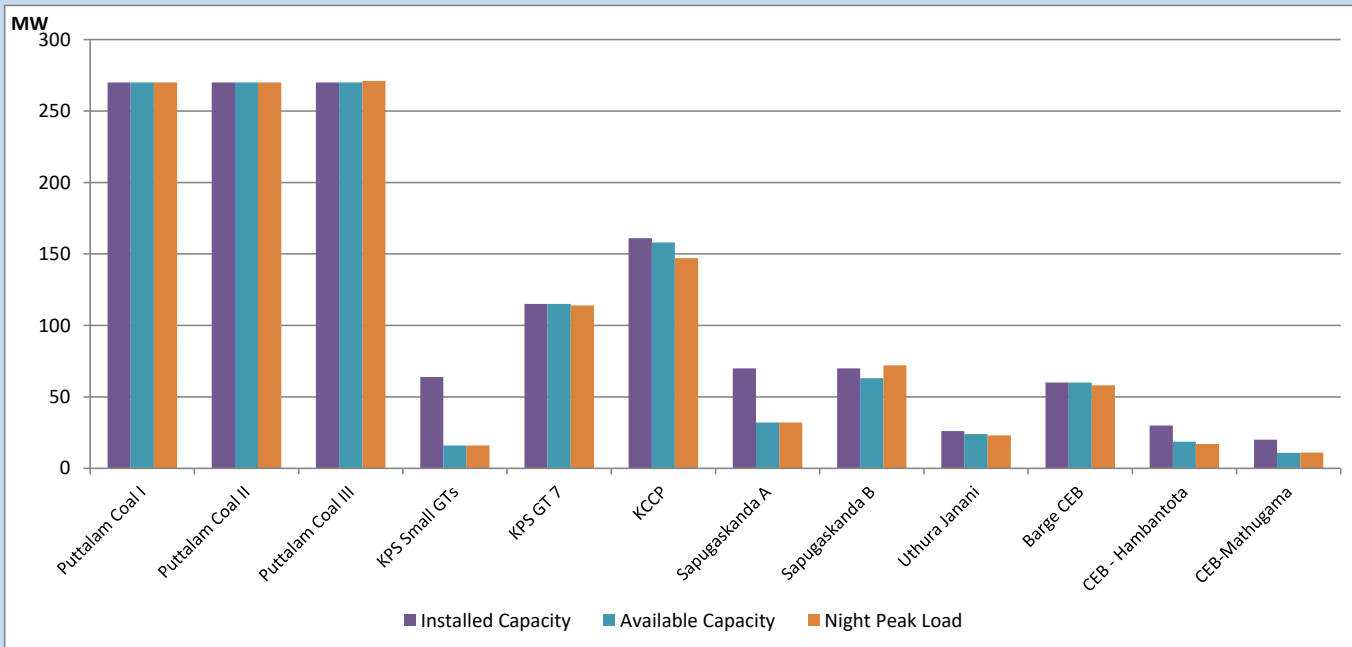
April 27, 2023



Available Generation is estimated based on plant availability at 6.00am on

April 28, 2023

## CEB owned Thermal Plant Loading at the Night Peak

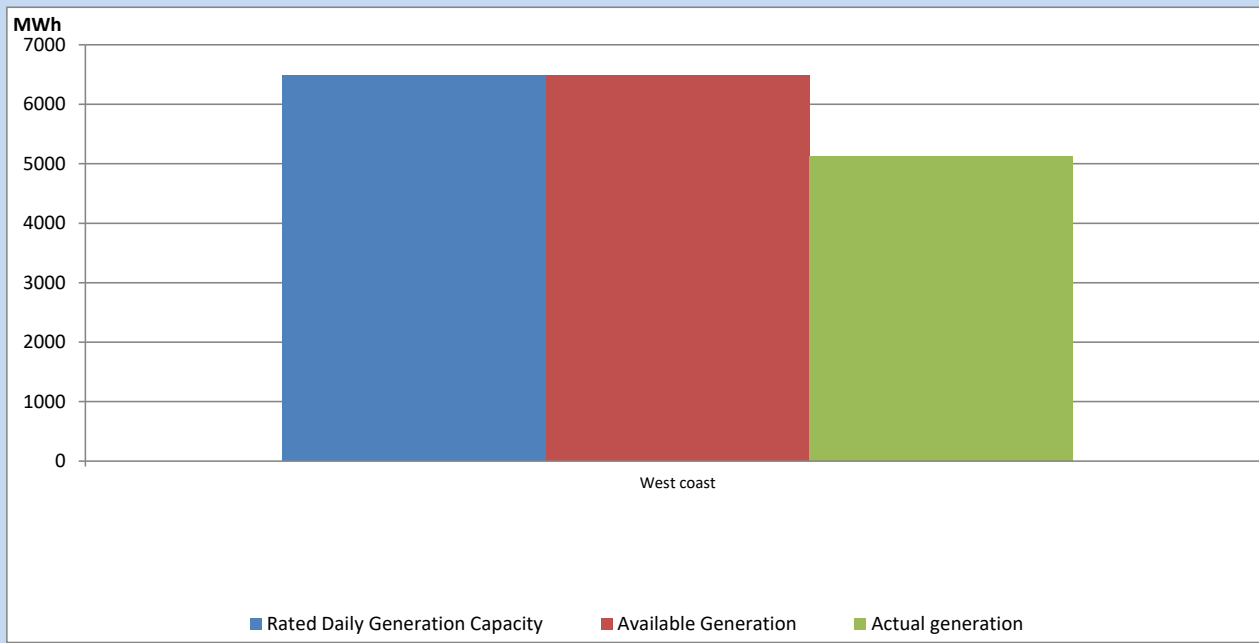


Note- Plant avilability is recorded at 6.00 am on

April 28, 2023

## IPP owned Thermal Plant Dispatch

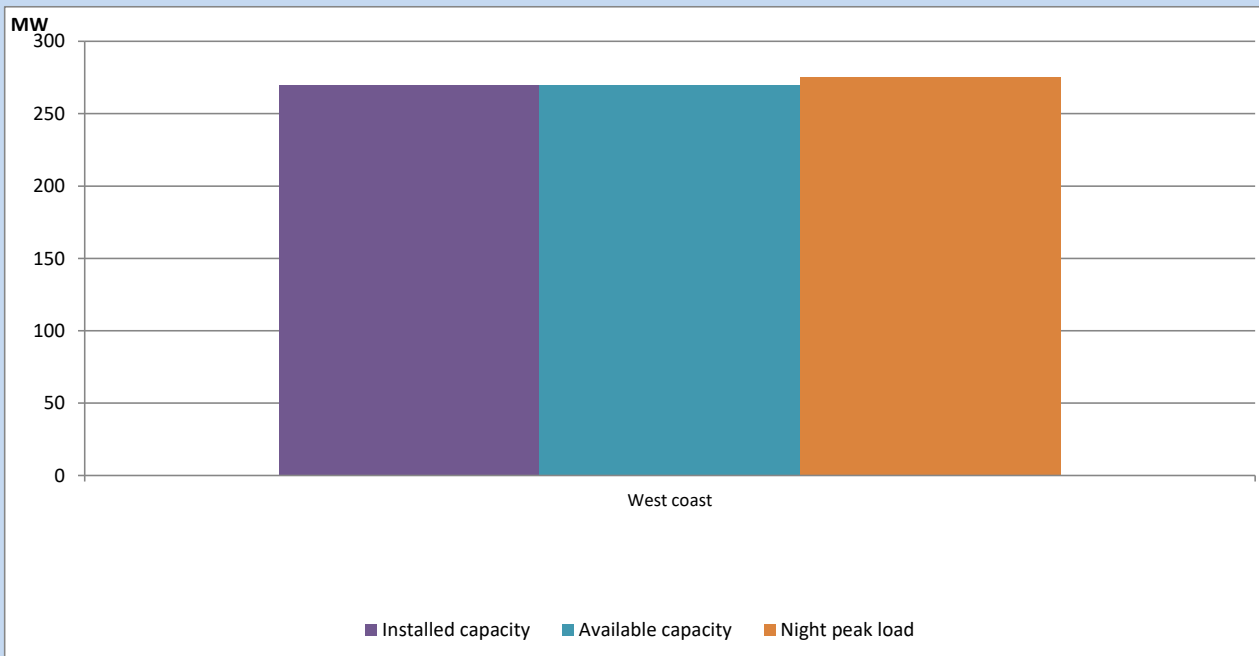
April 27, 2023



Available Generation is estimated based on plant availability at 6.00am on

April 28, 2023

## IPP owned Thermal Plant Loading at the Night Peak

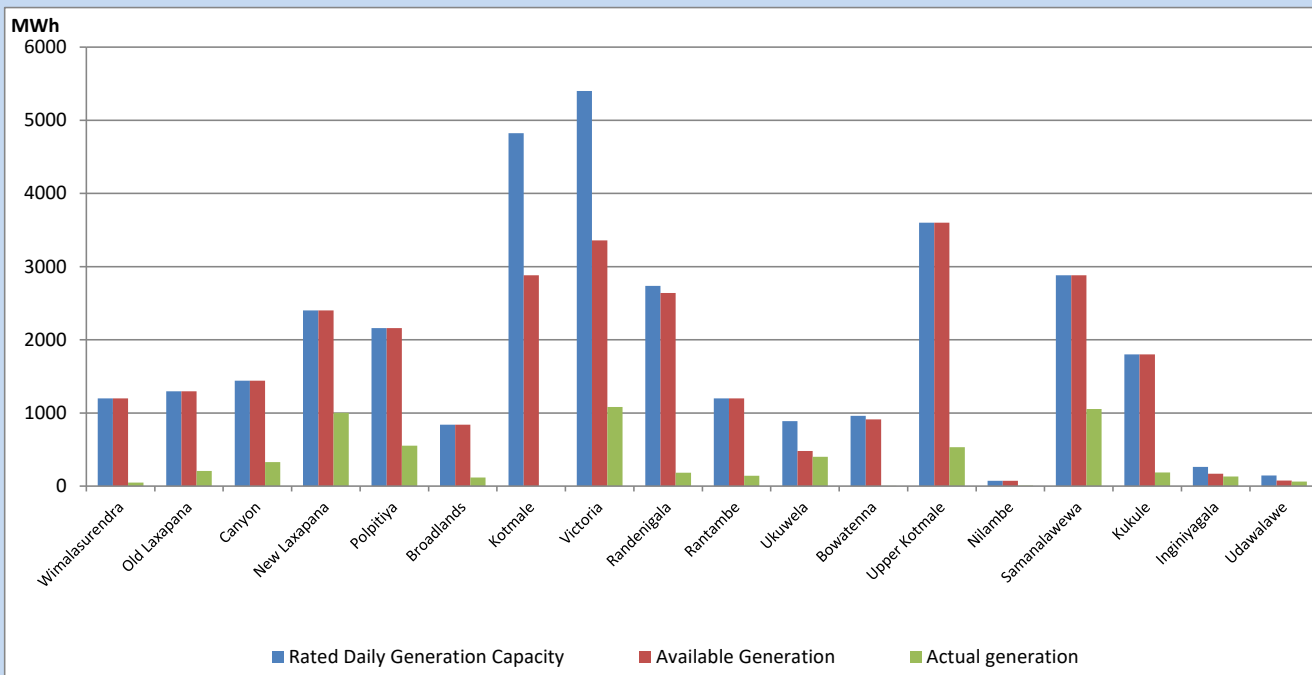


Note- Plant availability is recorded at 6.00 am on

April 28, 2023

## Major Hydro Plant Dispatch

April 27, 2023

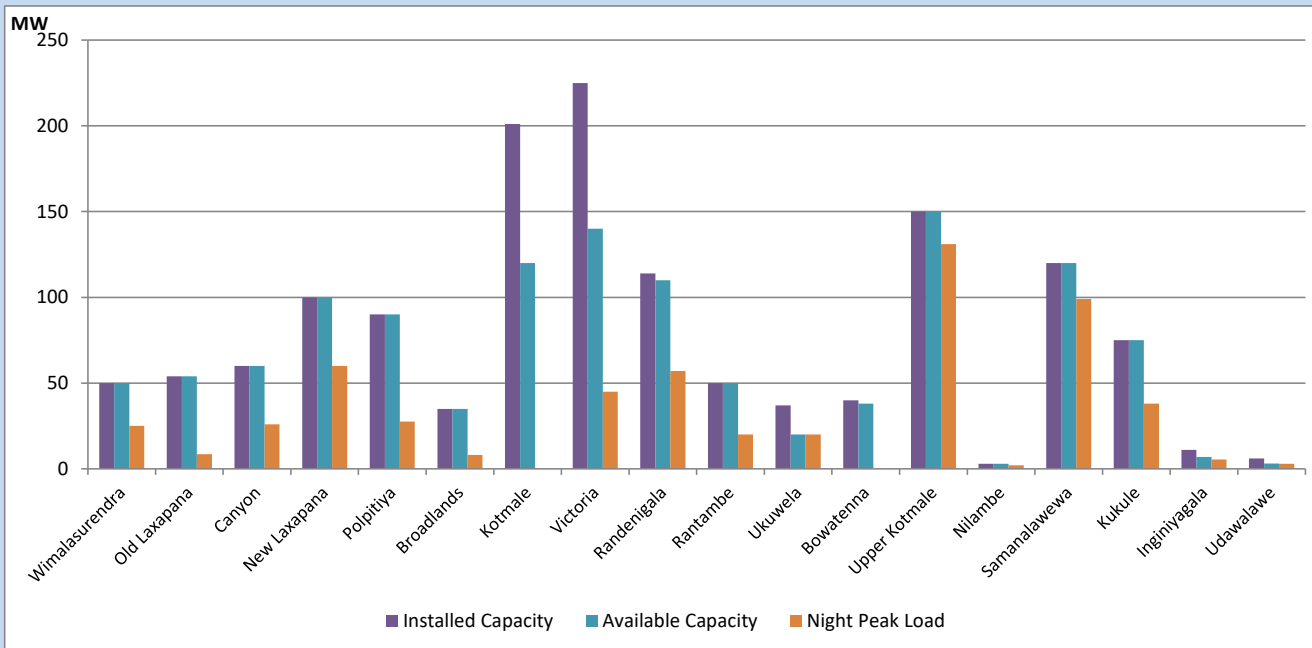


Available Generation is estimated based on plant availability at 6.00am on  
Broadlands power plant is operating in the Commissioning Stage

April 28, 2023

## Major Hydro Plant Loading at Night Peak

April 27, 2023



Note- Plant availability is recorded at 6.00 am on  
Broadlands power plant is operating in the Commissioning Stage

April 28, 2023

## Summary of Major Plant performance

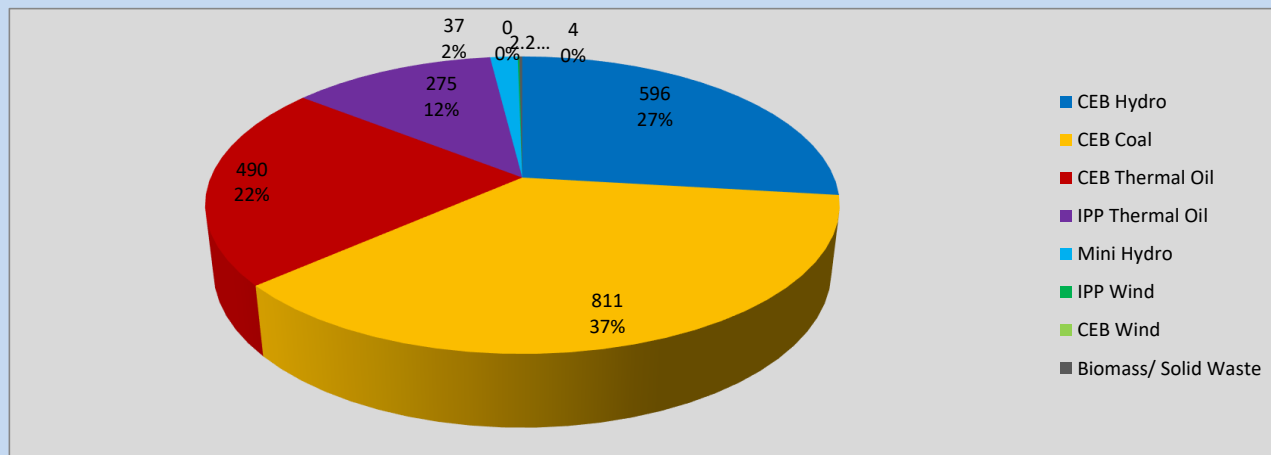
Plant	Installed Capacity	Plant Availability	Night peak Load	Plant Dispatch
	(MW)	(MW)	(MW)	(MWh)
Wimalasurendra	50	50	25	49
Old Laxapana	54	54	9	206
Canyon	60	60	26	327
New Laxapana	100	100	60	1,001
Polpitiya	90	90	28	552
Broadlands	35	35	8	116
Kotmale	201	120	0	0
Victoria	225	140	45	1,081
Randenigala	114	110	57	182
Rantambe	50	50	20	141
Ukuwela	37	20	20	401
Bowatenna	40	38	0	3
Upper Kotmale	150	150	131	533
Nilambe	3	3	2	8
Samanalawewa	120	120	99	1,054
Kukule	75	75	38	185
Inginiyagala	11	7	6	131
Udawalawe	6	3	3	61
Puttalam Coal I	270	270	270	6,482
Puttalam Coal II	270	270	270	6,462
Puttalam Coal III	270	270	271	6,502
KPS Small GTs	64	16	16	29
KPS GT 7	115	115	114	1,115
KCCP	161	158	147	3,481
Sapugaskanda A	70	32	32	622
Sapugaskanda B	70	63	72	1,533
Uthura Janani	26	24	23	405
Barge CEB	60	60	58	1,194
CEB-Hambantota	30	19	17	279
CEB-Mathugama	20	11	11	161
ACE Matara	24	0	0	0
Asia Power	50	0	0	0
Sojitz Kelanitissa	163	0	0	0
West Coast	270	270	275	5,122
Nothern Power	36	0	0	0
ACE Embilipitiya	93	0	0	0
<b>Total</b>	<b>3,483</b>	<b>2,803</b>	<b>2,195</b>	<b>41,120</b>

Plant availability is the availability recorded at 6 am on

April 28, 2023

## Contribution to the Night Peak in MW

April 27, 2023

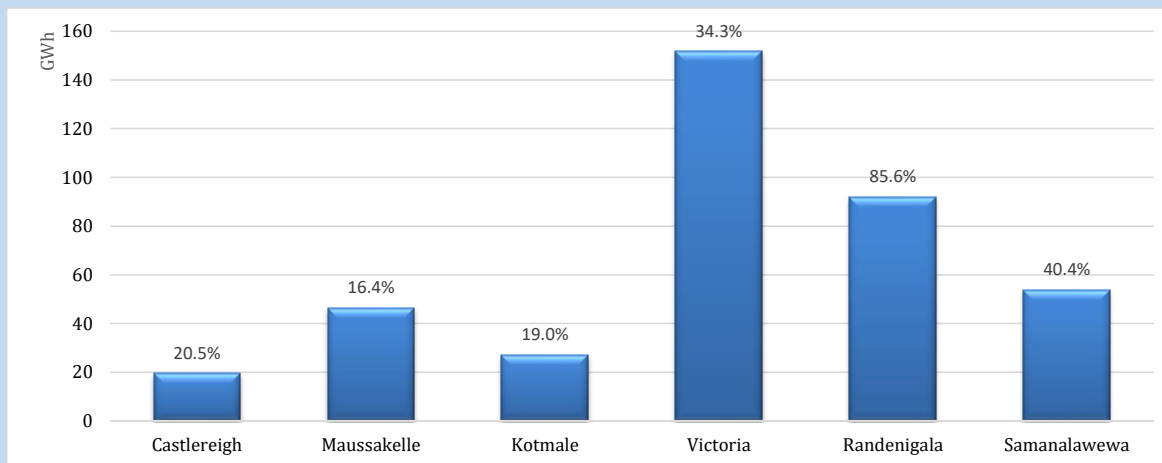


Night Peak*	2,215 MW
Day Peak	1,972 MW
Minimum Demand	1,181 MW

Above figures are excluding contribution from roof top solar, non telemetered solar and mini hydro plants

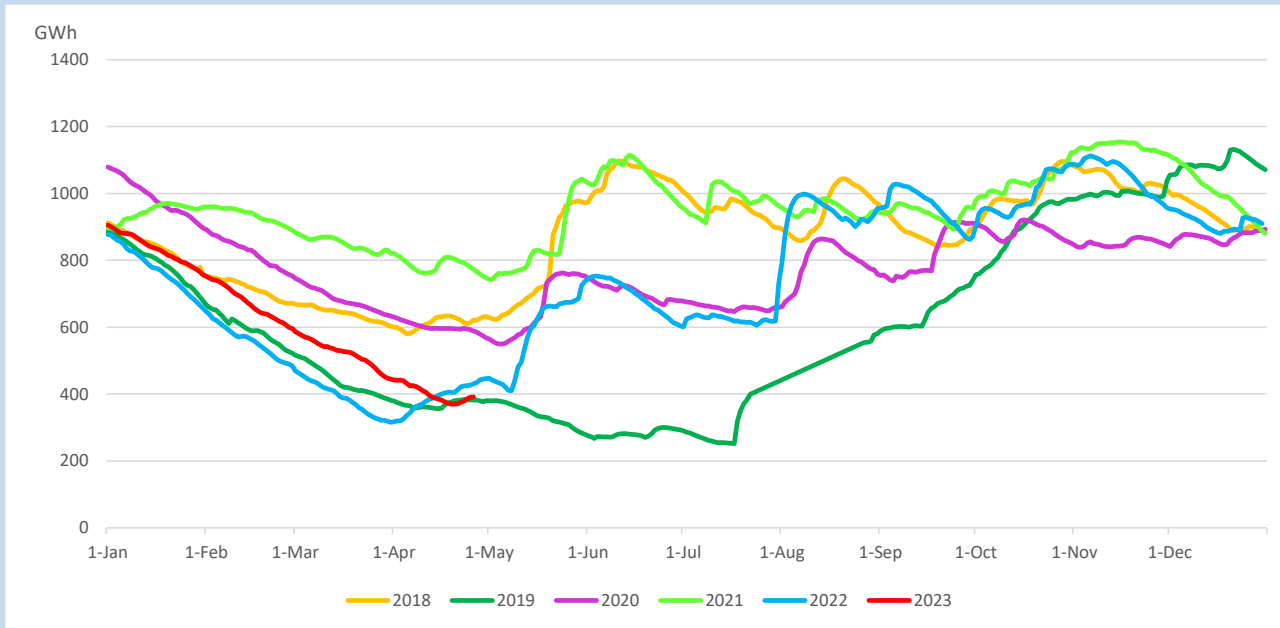
## Reservoir Levels -

as at 06.00 Hr on April 28, 2023

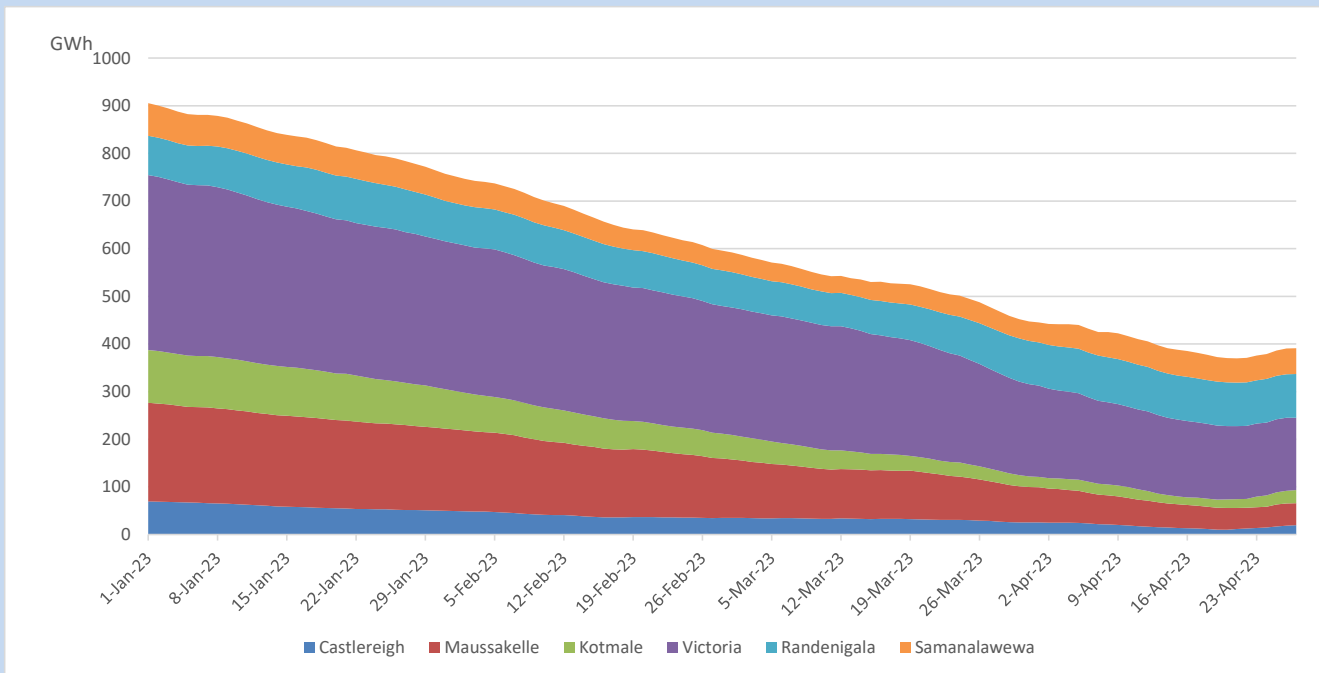


Total Reservoir Level	390.9 GWh
% of Total capacity	32.4%

## Comparison of Total Reservoir Storage Levels with Past Years

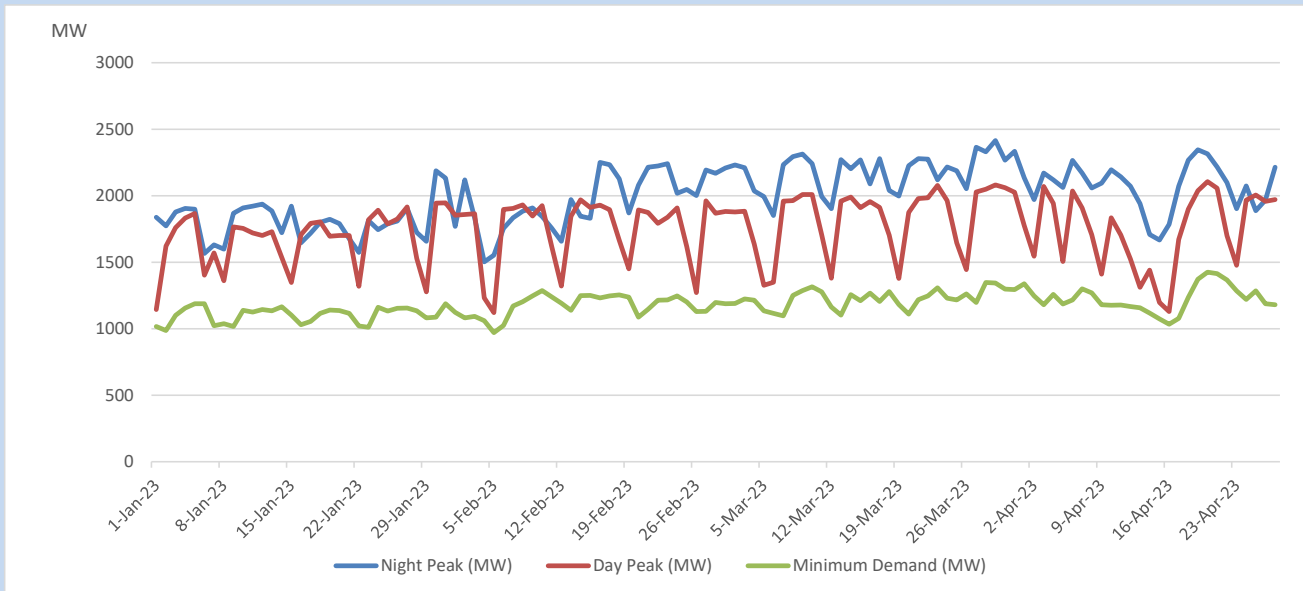


## Variation of Major Hydro Reservoir Levels in the current year (GWh)





## Variation of Demand during the current year

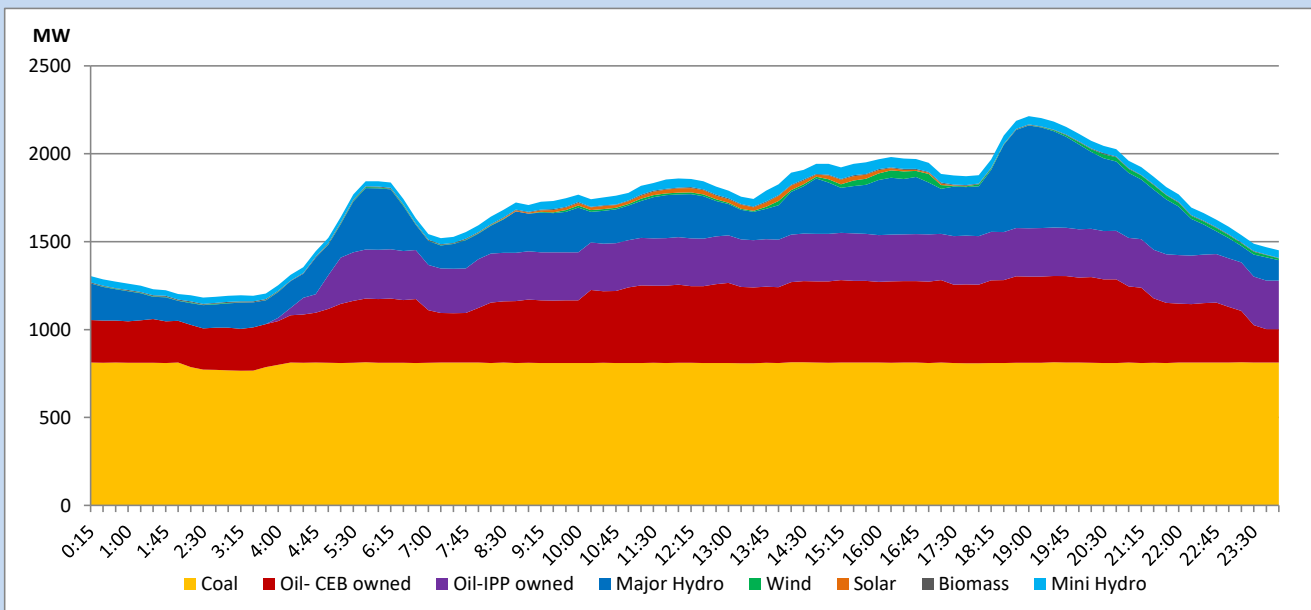


The above figures are excluding contribution from roof top solar, non telemetered solar and mini hydro plants

## Daily Load Curve

April 27, 2023

Solar and wind data is based on Telemetered Power Stations only



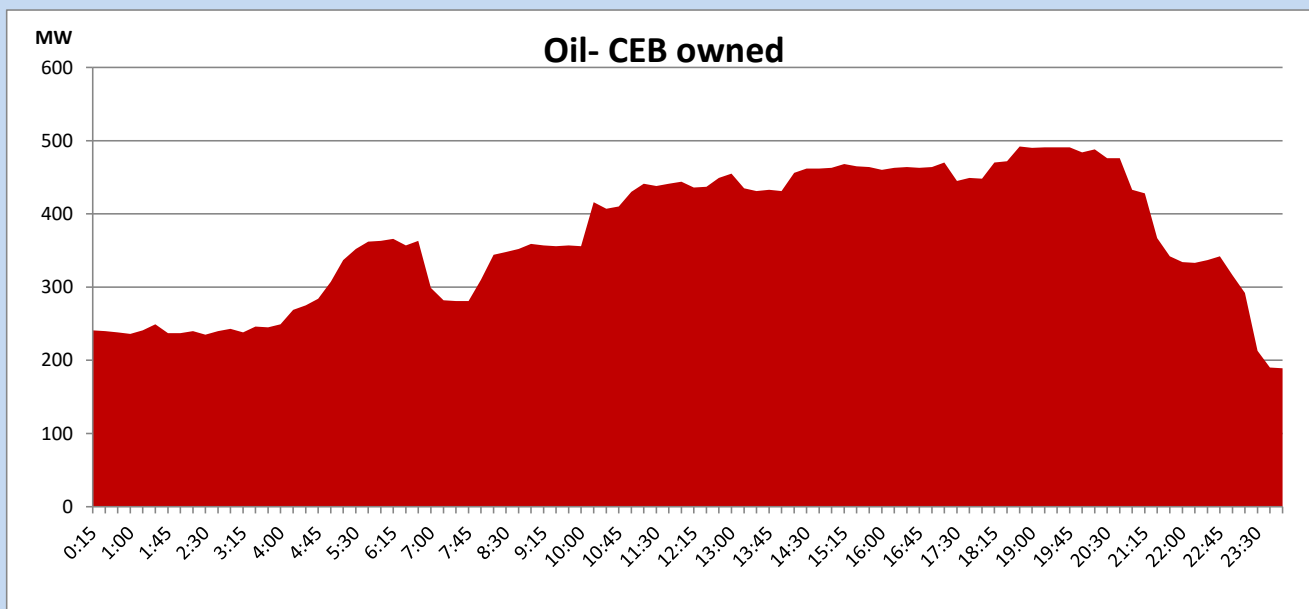
## Coal Generation during

April 27, 2023



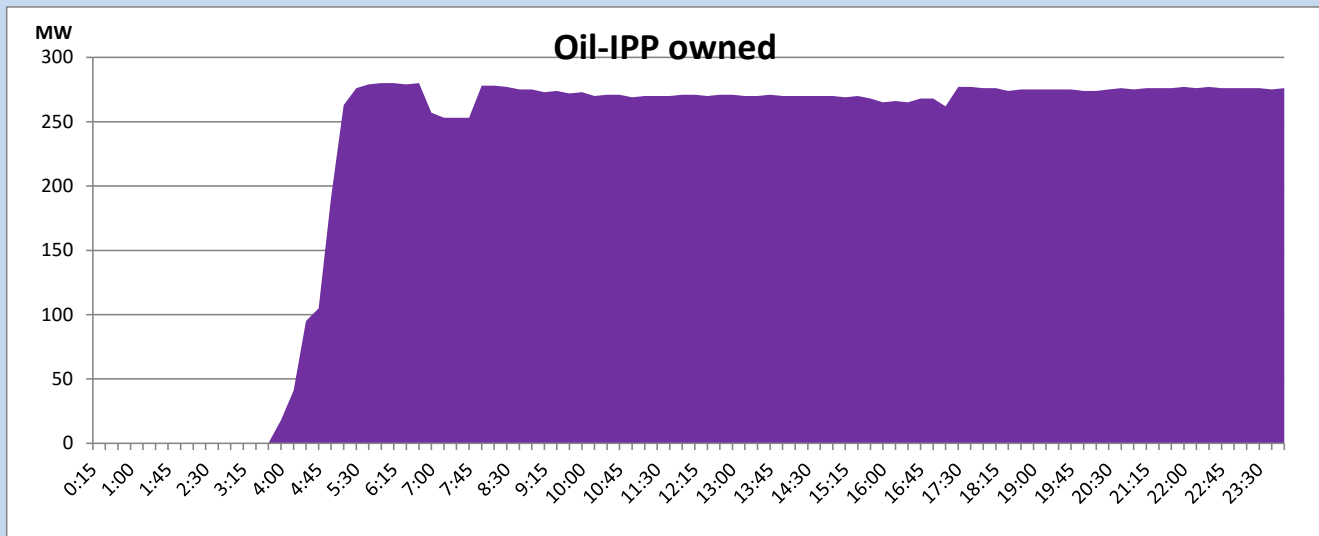
## CEB Oil Plant Generation during

April 27, 2023



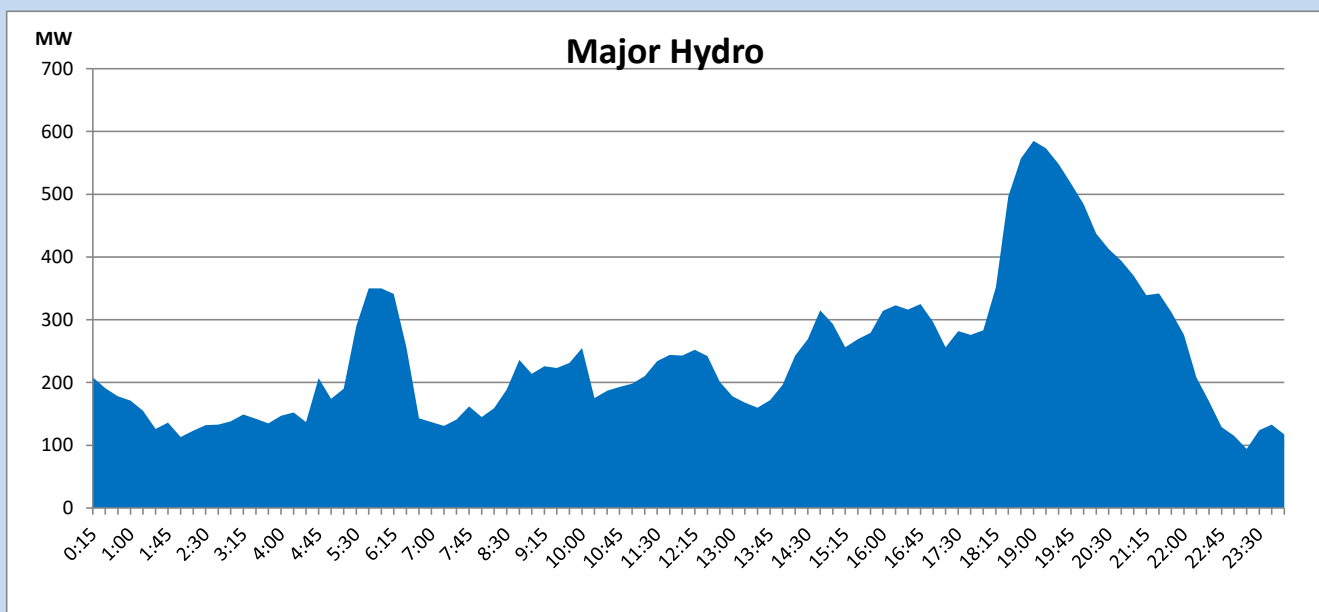
## IPP Oil Plant Generation during

April 27, 2023



## Major Hydro Generation during

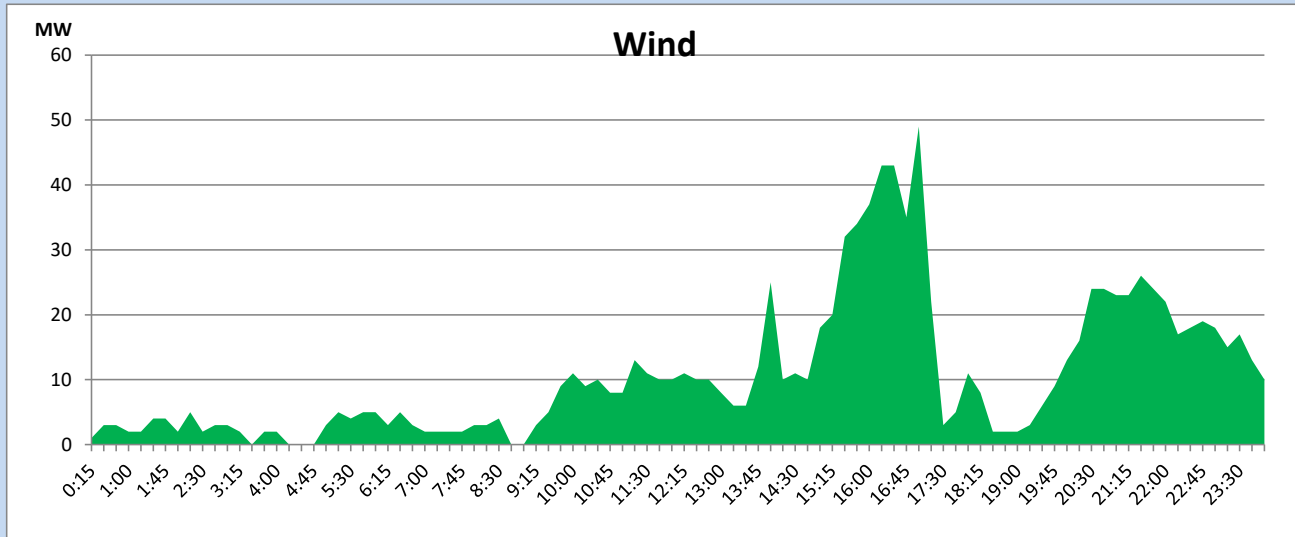
April 27, 2023



## Wind Generation during

April 27, 2023

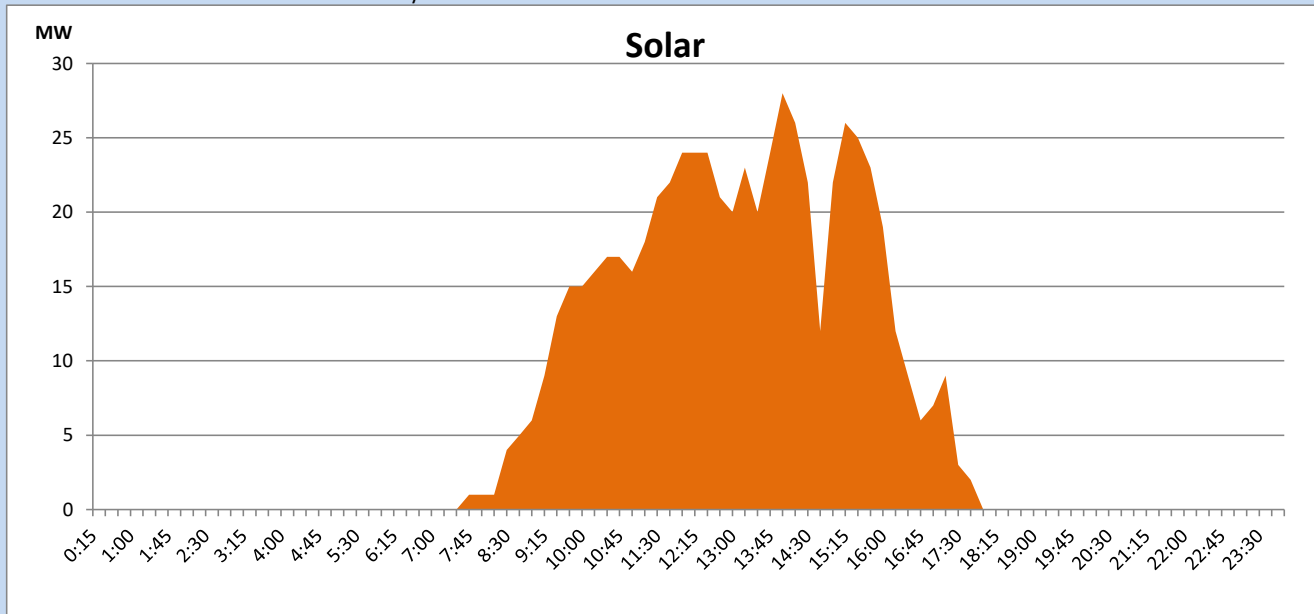
Based on Telemetered Power Stations only



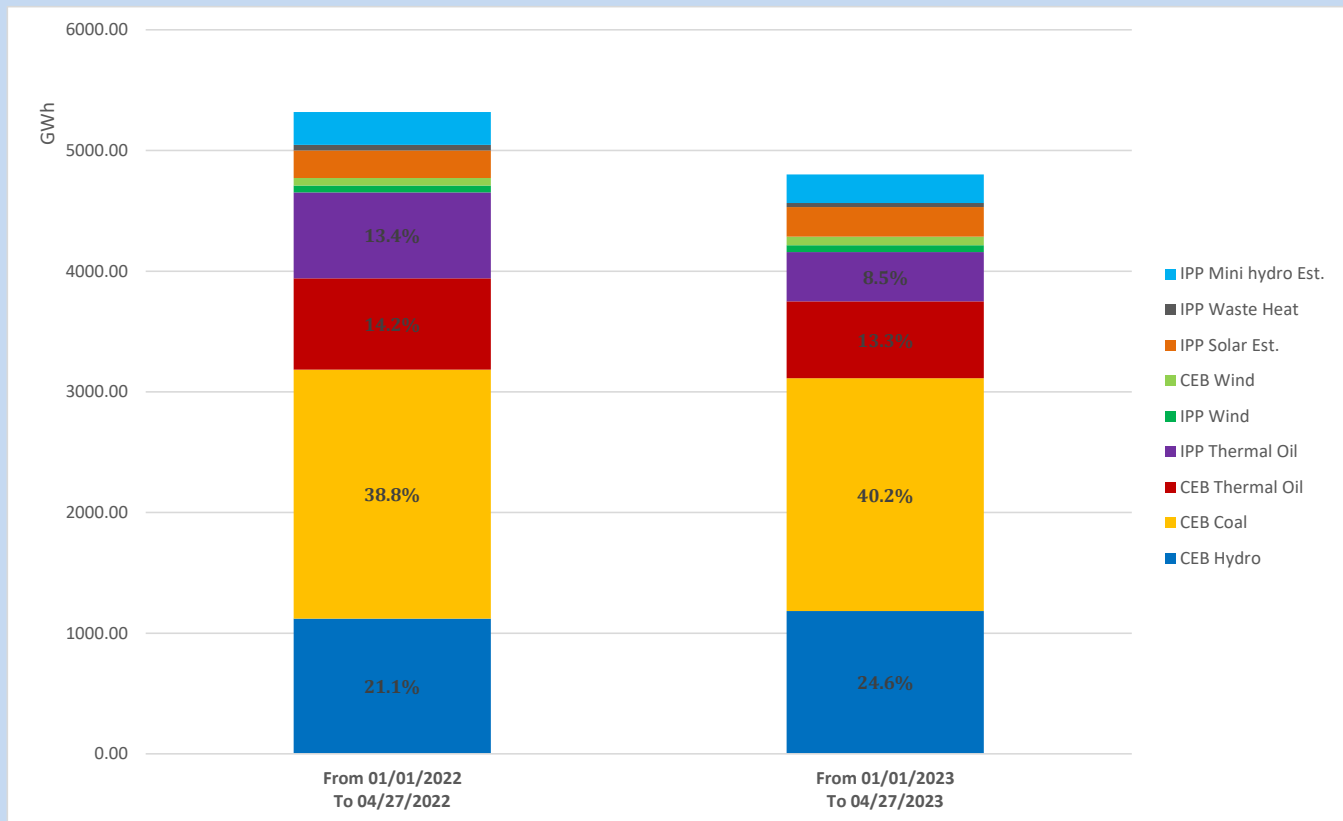
## Solar Generation during

April 27, 2023

Based on Telemetered Power Stations only



## Cumulative Dispatch Comparison with Last Year



The above figures are including contribution from roof top solar, non telemetered solar and mini hydro plants

## Thermal Plant Fuel types

Power Station	Primary Fuel
CEB Thermal	
Sapugaskanda 1	Heavy Fuel
Sapugaskanda 2	Heavy Fuel
Kelanitissa Small Gas Turbines	Auto Diesel
GT 7 - Kelanitissa	Auto Diesel
Kelanitissa CCY	Naphtha or Diesel
Lakvijaya 1	Coal
Lakvijaya 2	Coal
Lakvijaya 3	Coal
Uthuru Janani	Heavy Fuel
Barge CEB	Heavy Fuel

Power Station	Primary Fuel
Private Thermal	
West Coast	Auto Diesel / Heavy Fuel

### Major Incidents reported during the day

April 27, 2023

- 1) Sapugaskanda PS unit 03 tripped at 21:50hrs due to the mixing tank high alarm. The unit resumed generation at 22:30hrs.
- 2) Sapugaskanda PS unit 10 tripped at 23:06hrs due to an exhaust leak. The unit is yet to resume generation.
- 3) Sapugaskanda PS unit 03 made a forced shutdown at 23:26hrs due to a fuel leak. The unit resumed generation at 04:04hrs (28.04.2023).