

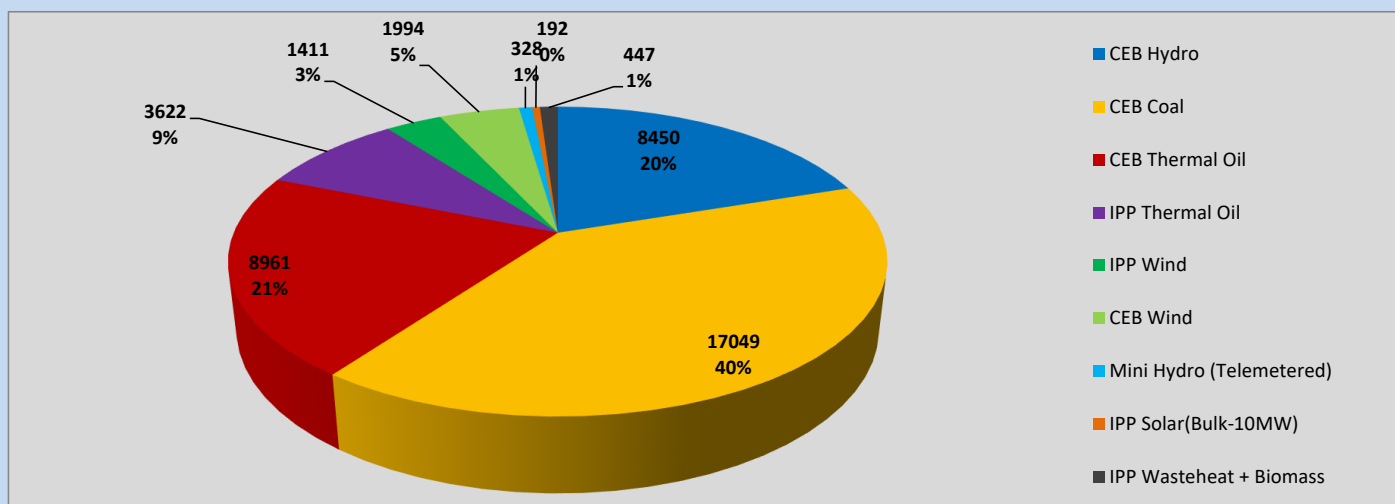
# Generation and Reservoirs Statistics

May 26, 2023



PUBLIC UTILITIES COMMISSION OF SRI LANKA

## Daily Generation Mix in MWh



Total Generation (Excluding estimated figures) =

42,454 MWh

### Estimated figures of CEB generation report

Estimated unserved energy = 0.00 GWh

Estimated Mini Hydro (Non telemetered) = 3662 MWh

Estimated IPP Solar PV (Bulk 1-10MW) = 304 MWh

Estimated Solar Roof Top PV = 1920 MWh

## Cumulative Dispatch

Following data excludes the contribution from roof top solar, non telemetered solar and mini hydro plants

### For Current Month

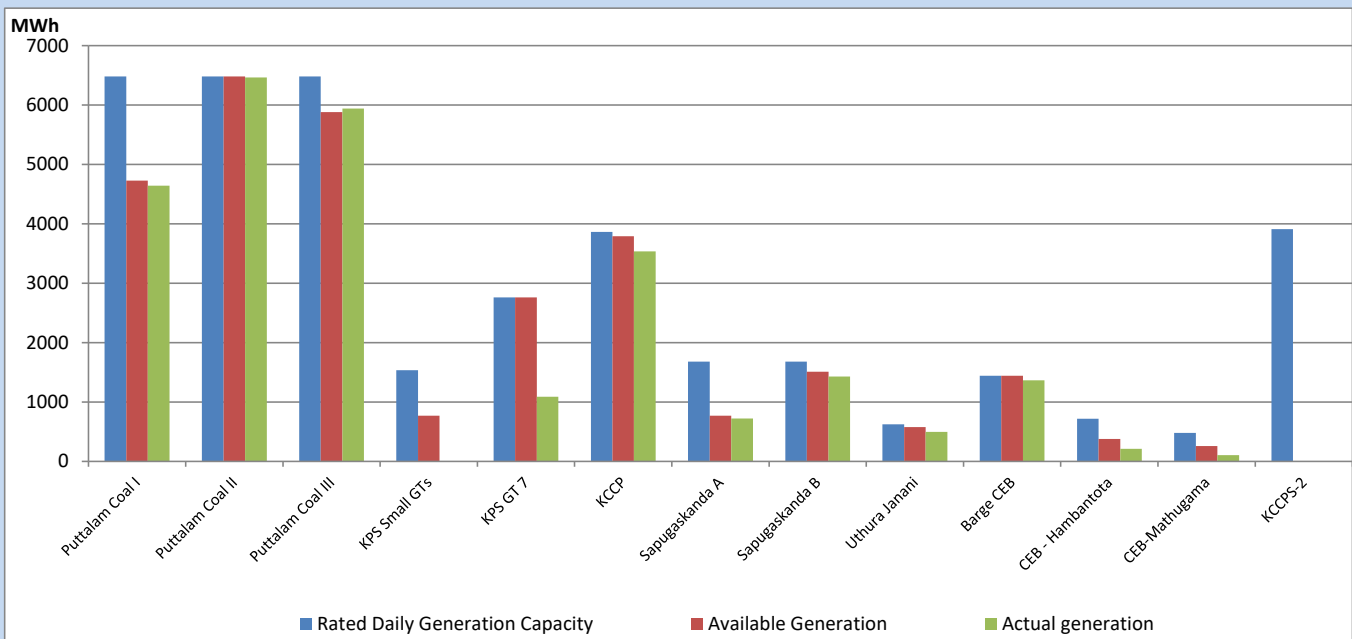
| Category                 | Dispatch (GWh) |        |
|--------------------------|----------------|--------|
| CEB Hydro                | 227            | 22.80% |
| CEB Coal                 | 423            | 42.42% |
| CEB Thermal Oil          | 147            | 14.79% |
| IPP Thermal              | 94             | 9.42%  |
| SPP Wind                 | 28             | 2.82%  |
| CEB Wind                 | 34             | 3.40%  |
| Mini Hydro (Telemetered) | 26             | 2.61%  |
| IPP Solar (Bulk-10MW)    | 7              | 0.71%  |
| IPP Wasteheat + BMP      | 10             | 1.01%  |
| <b>Total</b>             | <b>996</b>     |        |

### For Current Year

| Category                 | Dispatch (GWh) |        |
|--------------------------|----------------|--------|
| CEB Hydro                | 1,429          | 25.74% |
| CEB Coal                 | 2,410          | 43.41% |
| CEB Thermal Oil          | 803            | 14.46% |
| IPP Thermal              | 511            | 9.21%  |
| SPP Wind                 | 86             | 1.55%  |
| CEB Wind                 | 104            | 1.87%  |
| Mini Hydro (Telemetered) | 121            | 2.19%  |
| IPP Solar (Bulk-10MW)    | 42             | 0.75%  |
| IPP Wasteheat            | 45             | 0.81%  |
| <b>Total</b>             | <b>5,550</b>   |        |

## CEB owned Thermal Plant Dispatch

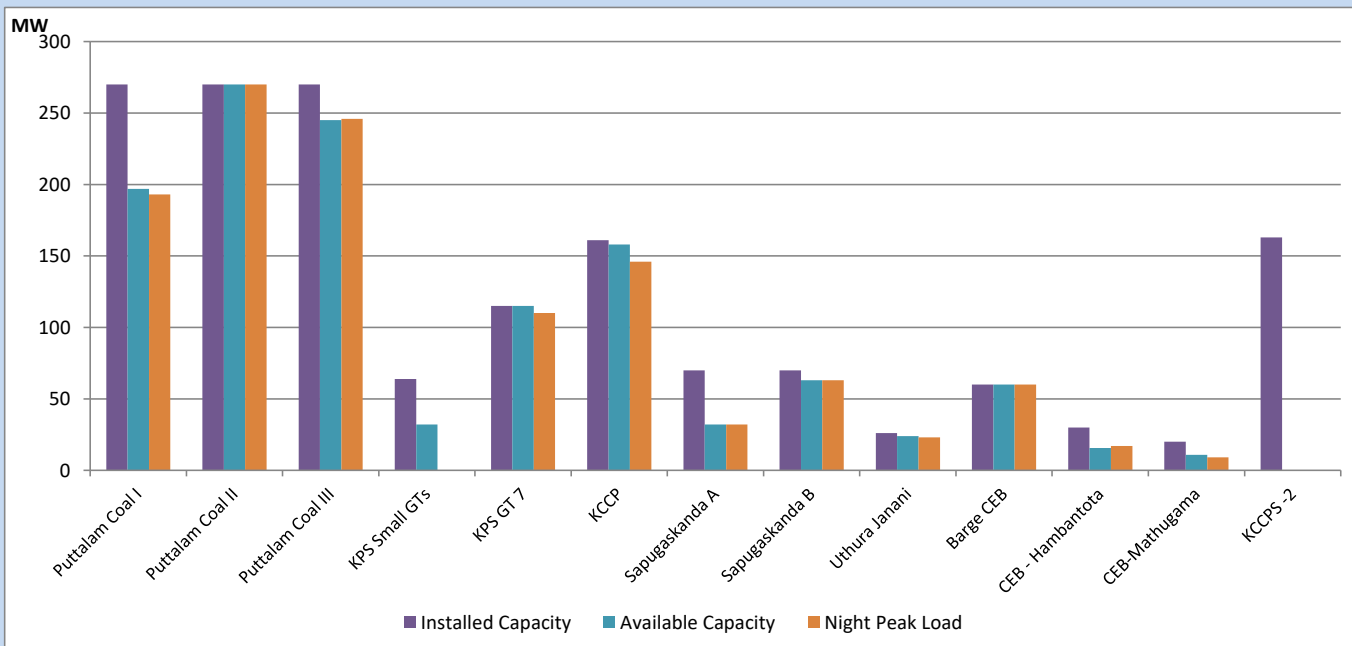
May 26, 2023



Available Generation is estimated based on plant availability at 6.00am on

May 27, 2023

## CEB owned Thermal Plant Loading at the Night Peak



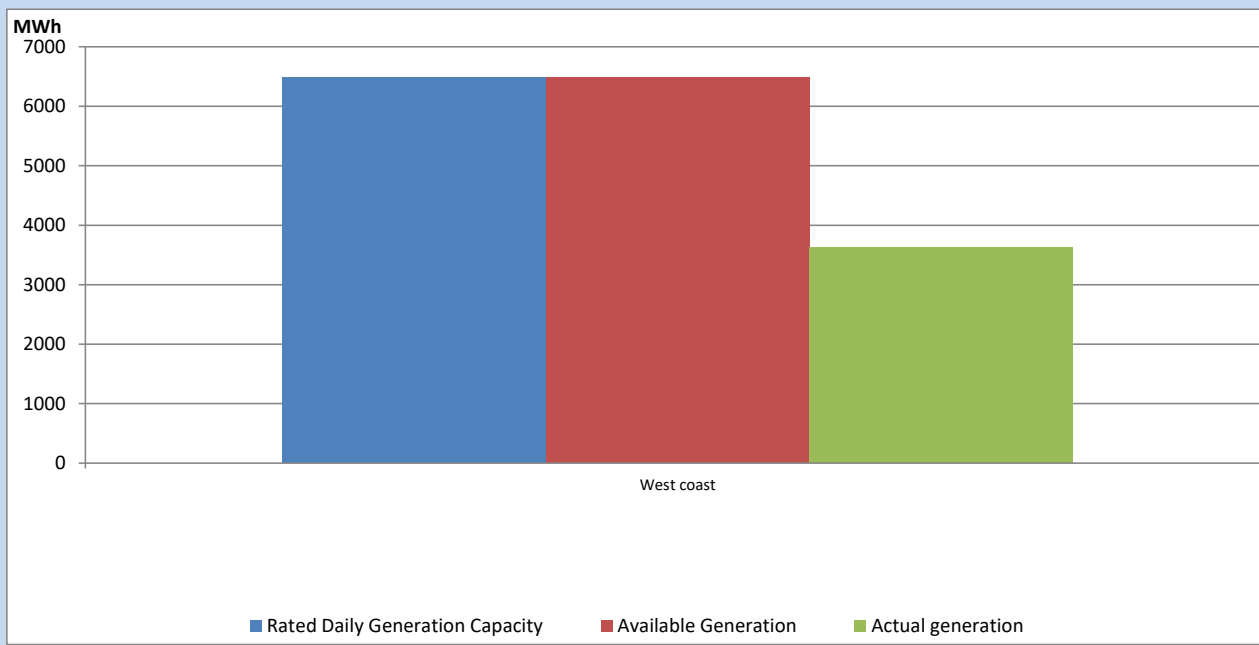
Note-

Plant availability is recorded at 6.00 am on

May 27, 2023

## IPP owned Thermal Plant Dispatch

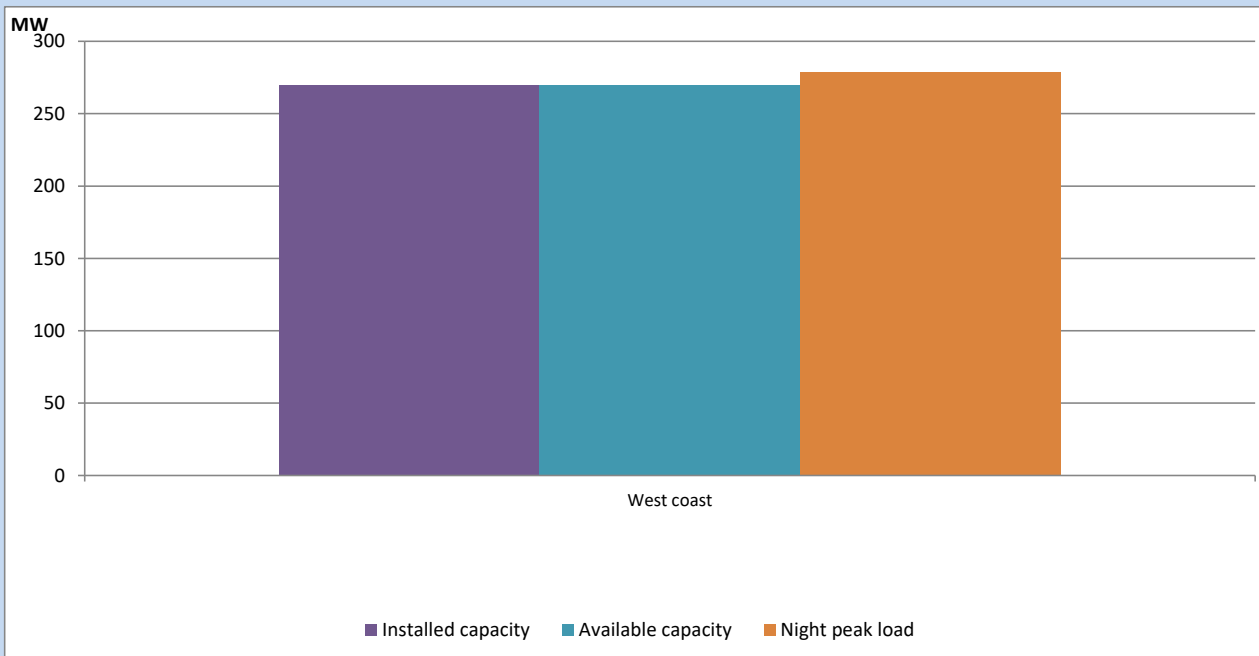
May 26, 2023



Available Generation is estimated based on plant availability at 6.00am on

May 27, 2023

## IPP owned Thermal Plant Loading at the Night Peak

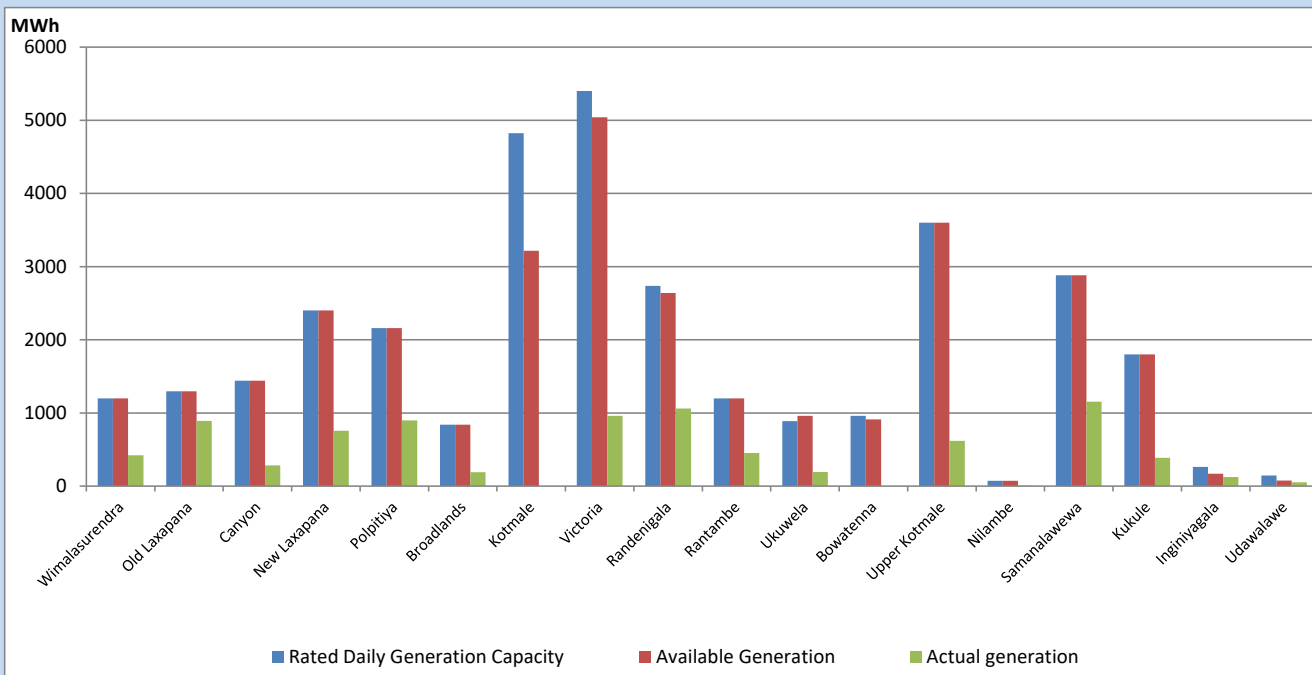


Note- Plant availability is recorded at 6.00 am on

May 27, 2023

## Major Hydro Plant Dispatch

May 26, 2023

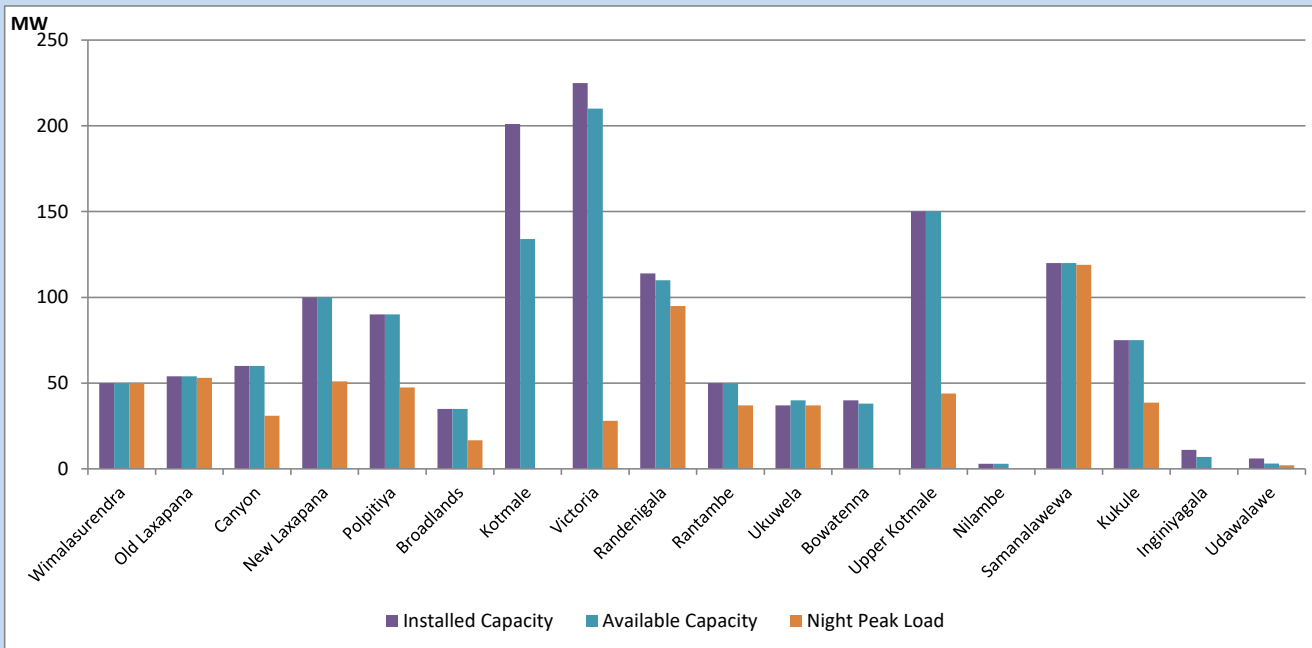


Available Generation is estimated based on plant availability at 6.00am on  
Broadlands power plant is operating in the Commissioning Stage

May 27, 2023

## Major Hydro Plant Loading at Night Peak

May 26, 2023



Note- Plant availability is recorded at 6.00 am on  
Broadlands power plant is operating in the Commissioning Stage

May 27, 2023

## Summary of Major Plant performance

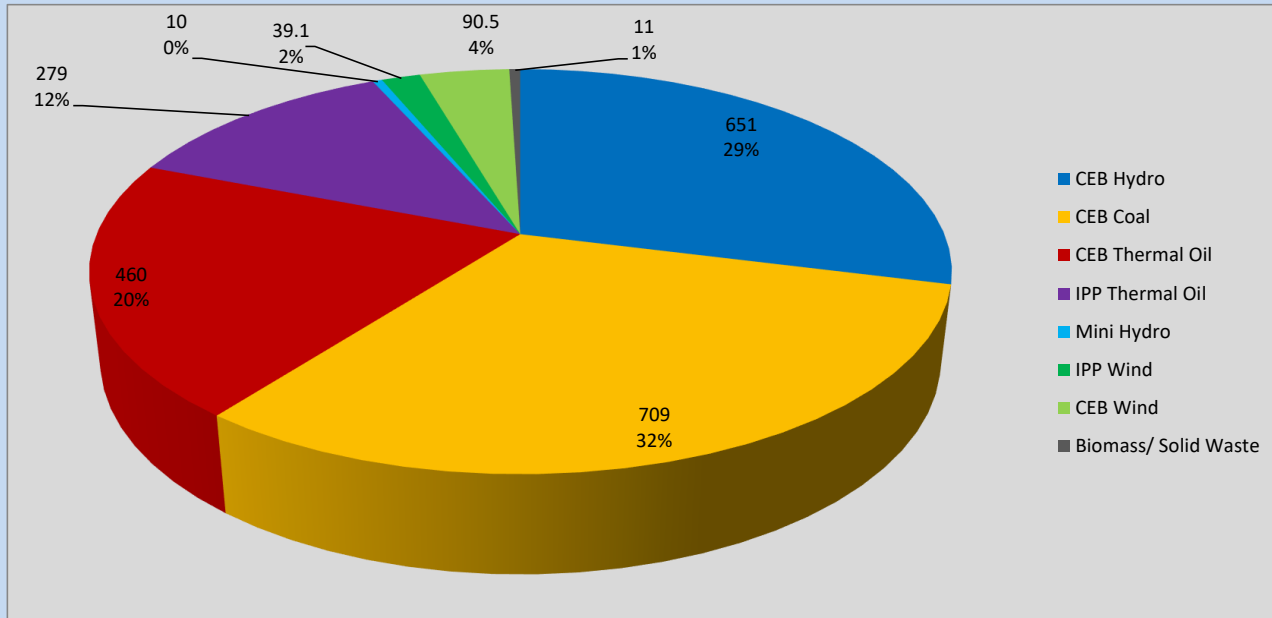
| Plant             | Installed Capacity | Plant Availability | Night peak Load | Plant Dispatch |
|-------------------|--------------------|--------------------|-----------------|----------------|
|                   | (MW)               | (MW)               | (MW)            | (MWh)          |
| Wimalasurendra    | 50                 | 50                 | 50              | 422            |
| Old Laxapana      | 54                 | 54                 | 53              | 892            |
| Canyon            | 60                 | 60                 | 31              | 282            |
| New Laxapana      | 100                | 100                | 51              | 755            |
| Polpitiya         | 90                 | 90                 | 47              | 900            |
| Broadlands        | 35                 | 35                 | 17              | 189            |
| Kotmale           | 201                | 134                | 0               | 0              |
| Victoria          | 225                | 210                | 28              | 961            |
| Randenigala       | 114                | 110                | 95              | 1,059          |
| Rantambe          | 50                 | 50                 | 37              | 454            |
| Ukuwela           | 37                 | 40                 | 37              | 194            |
| Bowatenna         | 40                 | 38                 | 0               | 0              |
| Upper Kotmale     | 150                | 150                | 44              | 618            |
| Nilambe           | 3                  | 3                  | 0               | 8              |
| Samanalawewa      | 120                | 120                | 119             | 1,153          |
| Kukule            | 75                 | 75                 | 39              | 387            |
| Inginiyagala      | 11                 | 7                  | 0               | 123            |
| Udawalawe         | 6                  | 3                  | 2               | 53             |
| Puttalam Coal I   | 270                | 197                | 193             | 4,643          |
| Puttalam Coal II  | 270                | 270                | 270             | 6,465          |
| Puttalam Coal III | 270                | 245                | 246             | 5,941          |
| KPS Small GTs     | 64                 | 32                 | 0               | 0              |
| KPS GT 7          | 115                | 115                | 110             | 1,087          |
| KCCP              | 161                | 158                | 146             | 3,536          |
| Sapugaskanda A    | 70                 | 32                 | 32              | 724            |
| Sapugaskanda B    | 70                 | 63                 | 63              | 1,431          |
| Uthura Janani     | 26                 | 24                 | 23              | 498            |
| Barge CEB         | 60                 | 60                 | 60              | 1,365          |
| CEB-Hambantota    | 30                 | 16                 | 17              | 214            |
| CEB-Mathugama     | 20                 | 11                 | 9               | 106            |
| ACE Matara        | 24                 | 0                  | 0               | 0              |
| Asia Power        | 50                 | 0                  | 0               | 0              |
| KCCPS -2          | 163                | 0                  | 0               | 0              |
| West Coast        | 270                | 270                | 279             | 3,622          |
| Nothern Power     | 36                 | 0                  | 0               | 0              |
| ACE Embilipitiya  | 93                 | 0                  | 0               | 0              |
| <b>Total</b>      | <b>3,483</b>       | <b>2,822</b>       | <b>2,248</b>    | <b>42,454</b>  |

Plant availability is the availability recorded at 6 am on

May 27, 2023

## Contribution to the Night Peak in MW

May 26, 2023

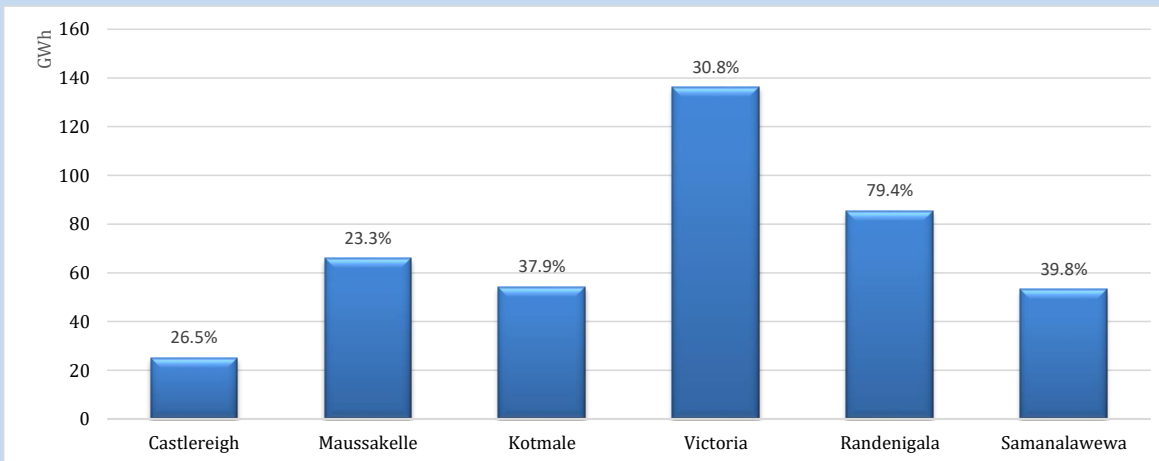


|                         |          |
|-------------------------|----------|
| Night Peak*             | 2,249 MW |
| Day Peak Maximum Demand | 2,009 MW |
| Day Peak Minimum Demand | 1,710 MW |
| Off Peak Minimum Demand | 1,322 MW |

Above figures are excluding contribution from roof top solar, non telemetered solar and mini hydro plants

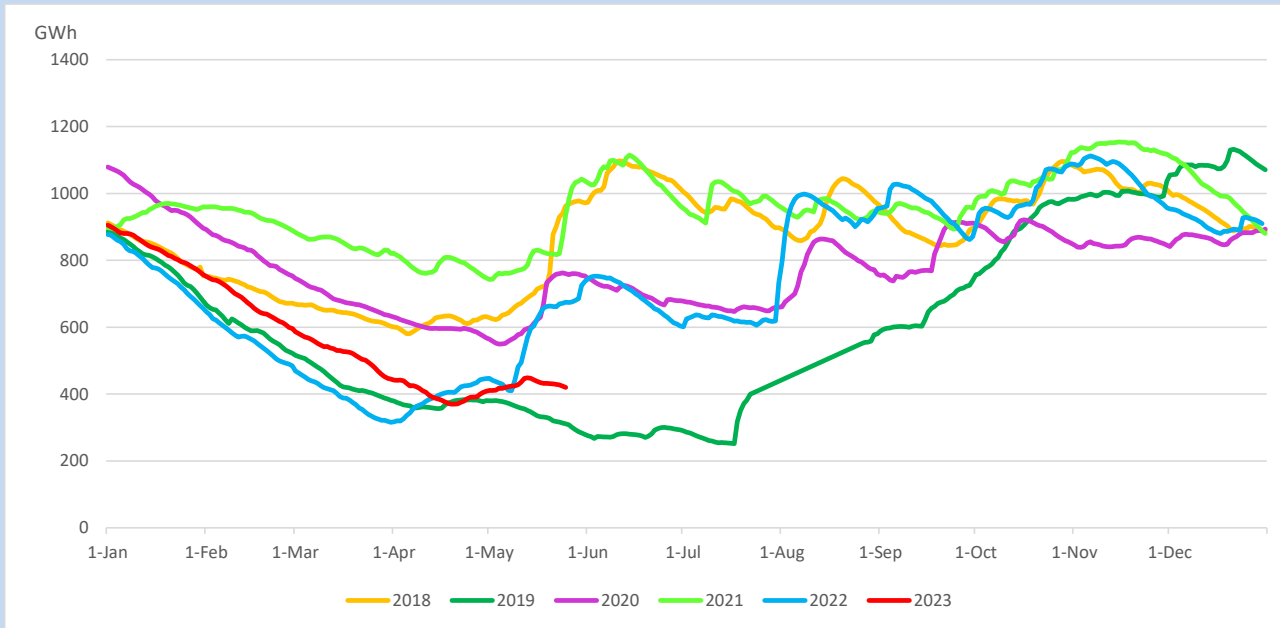
## Reservoir Levels -

as at 06.00 Hr on May 27, 2023

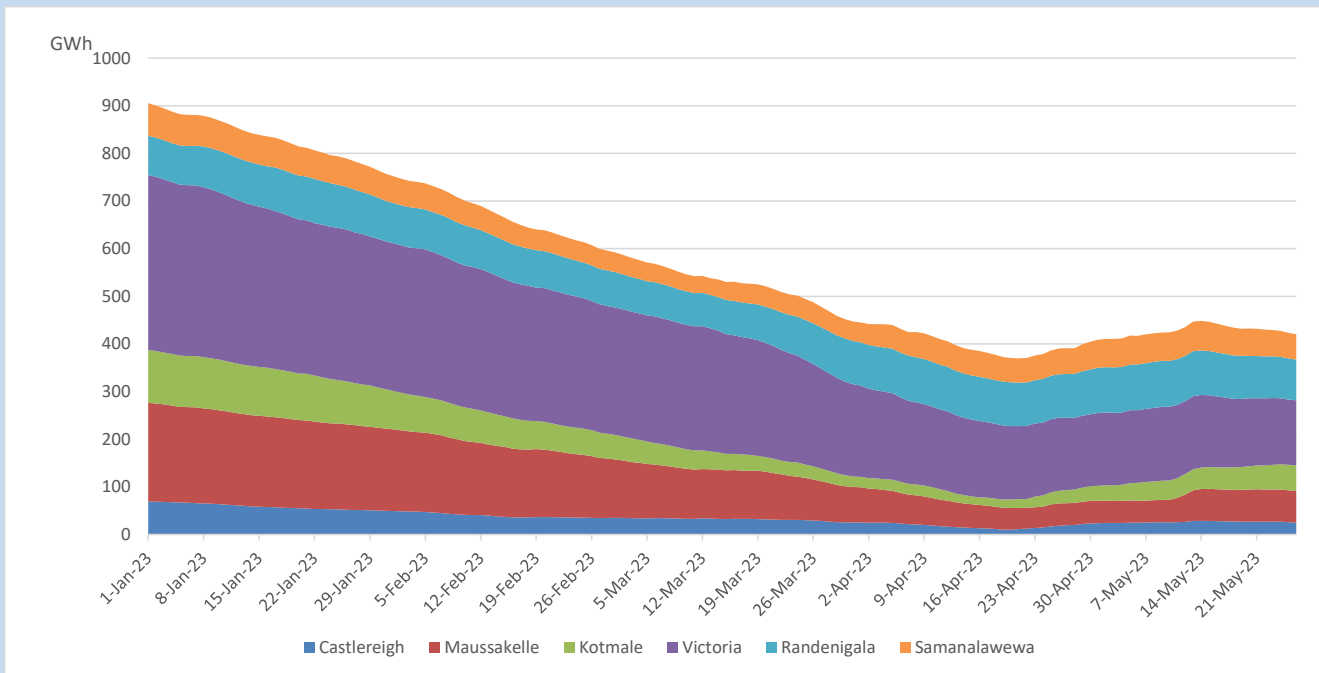


|                       |           |
|-----------------------|-----------|
| Total Reservoir Level | 420.1 GWh |
| % of Total capacity   | 34.9%     |

## Comparison of Total Reservoir Storage Levels with Past Years

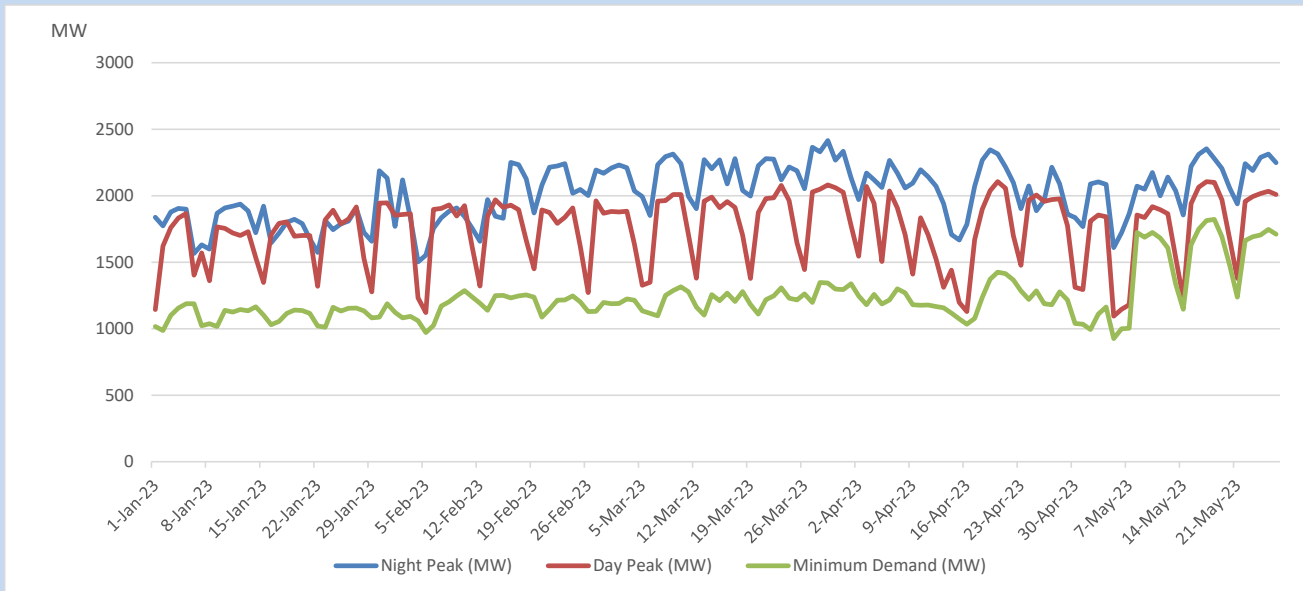


## Variation of Major Hydro Reservoir Levels in the current year (GWh)





## Variation of Demand during the current year

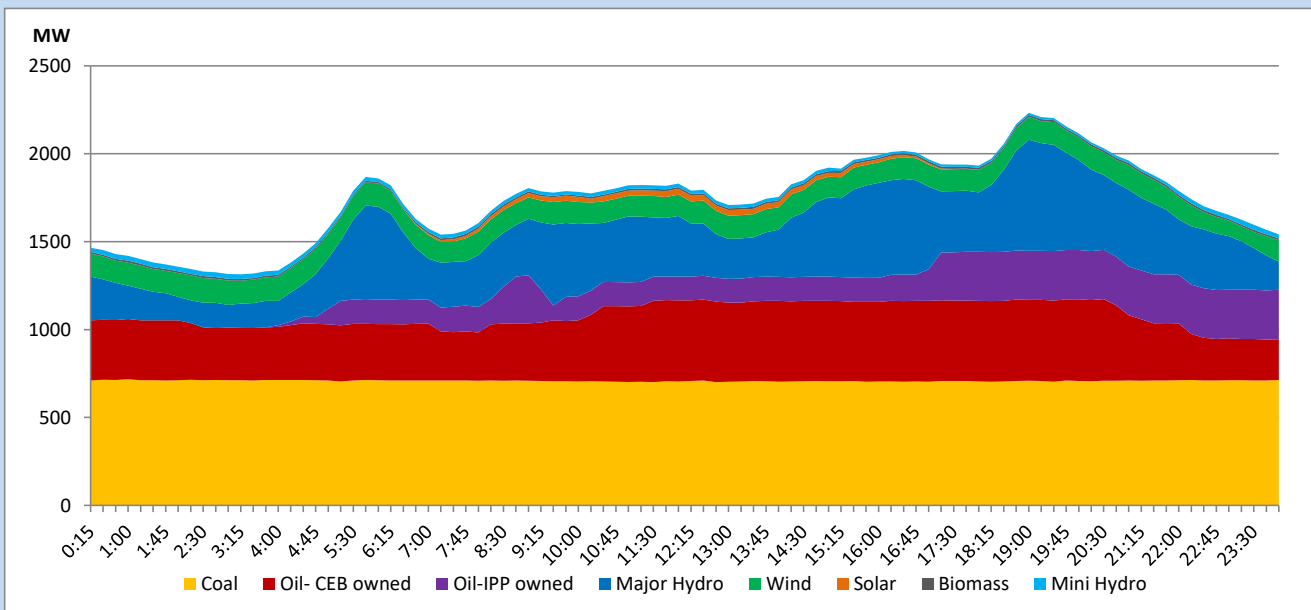


The above figures are excluding contribution from roof top solar, non telemetered solar and mini hydro plants

## Daily Load Curve

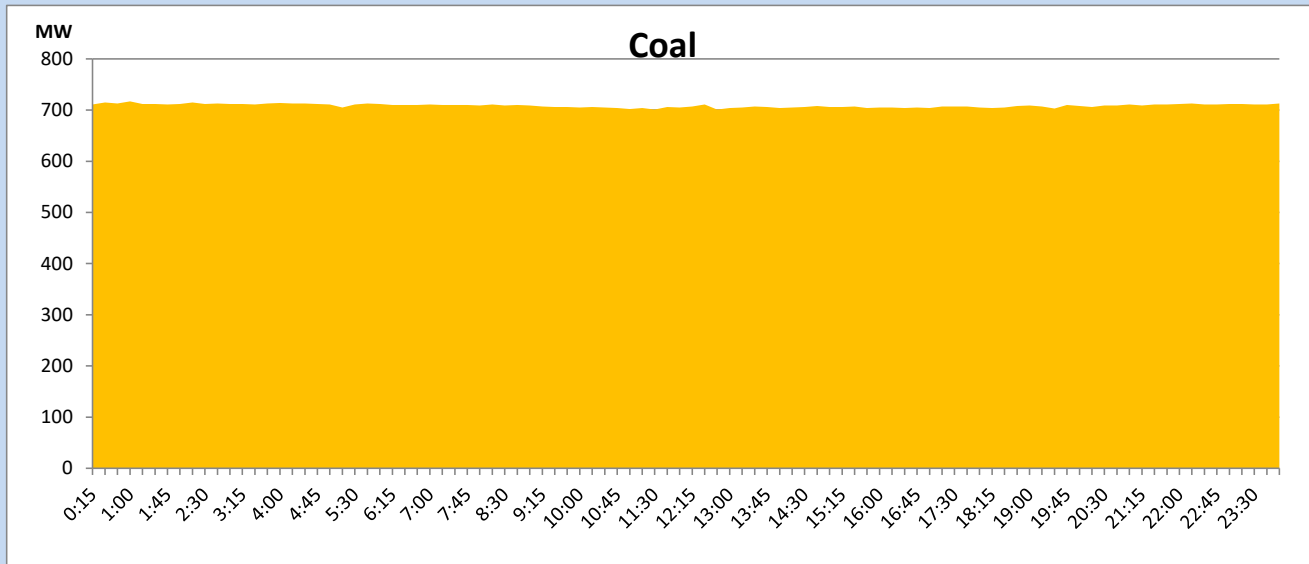
May 26, 2023

Solar and wind data is based on Telemetered Power Stations only



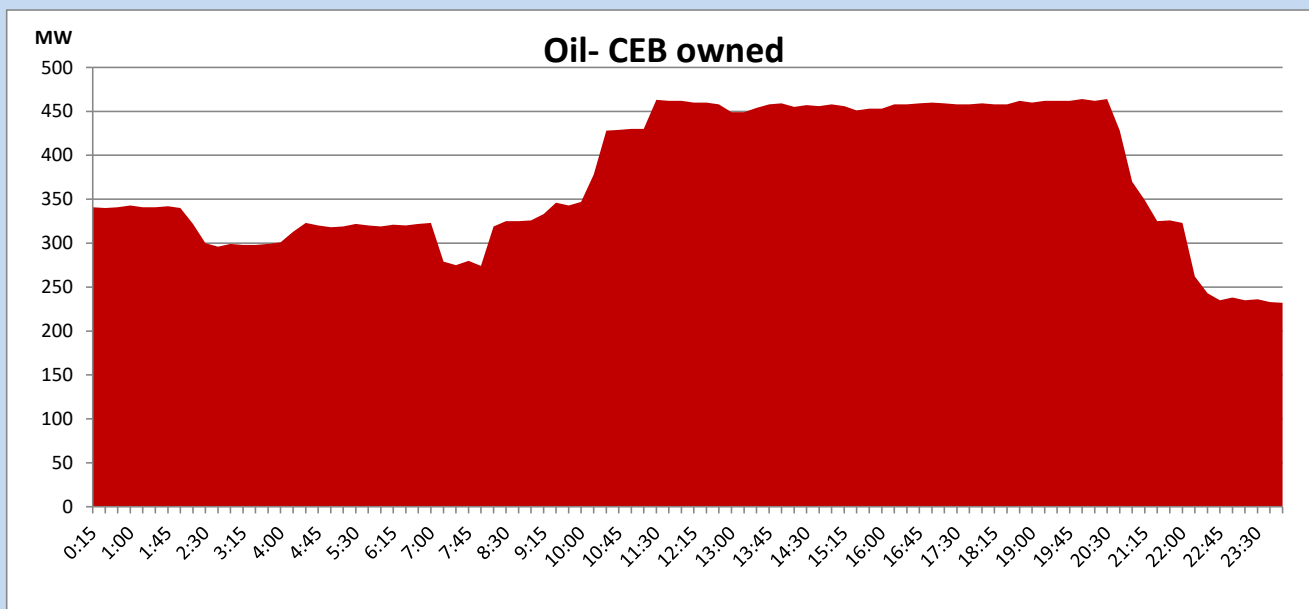
## Coal Generation during

May 26, 2023



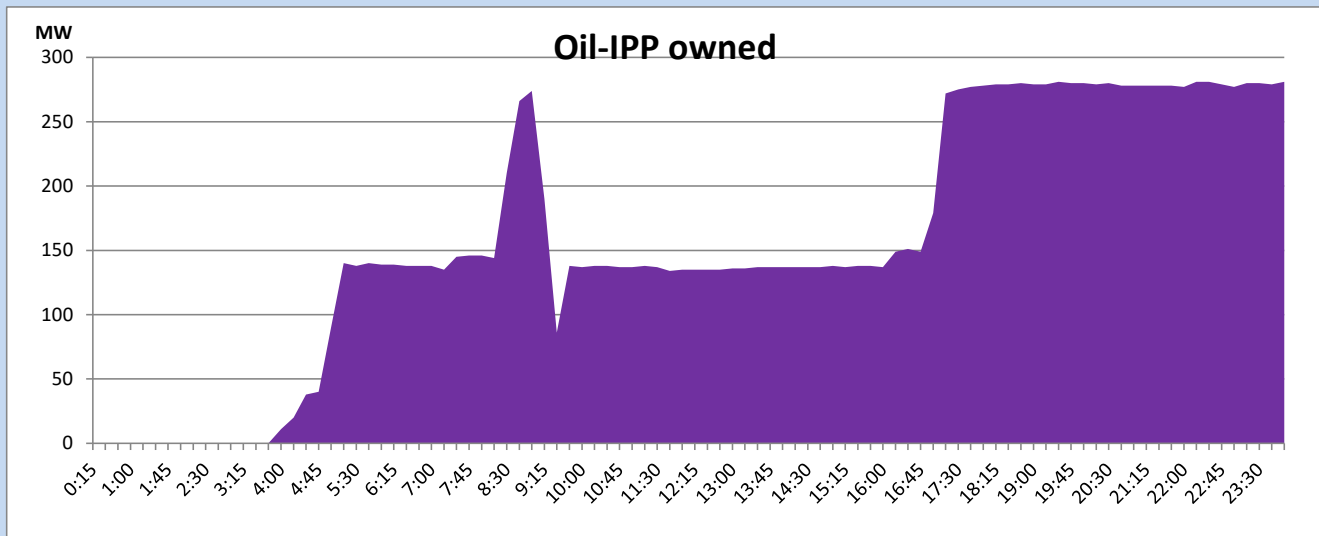
## CEB Oil Plant Generation during

May 26, 2023



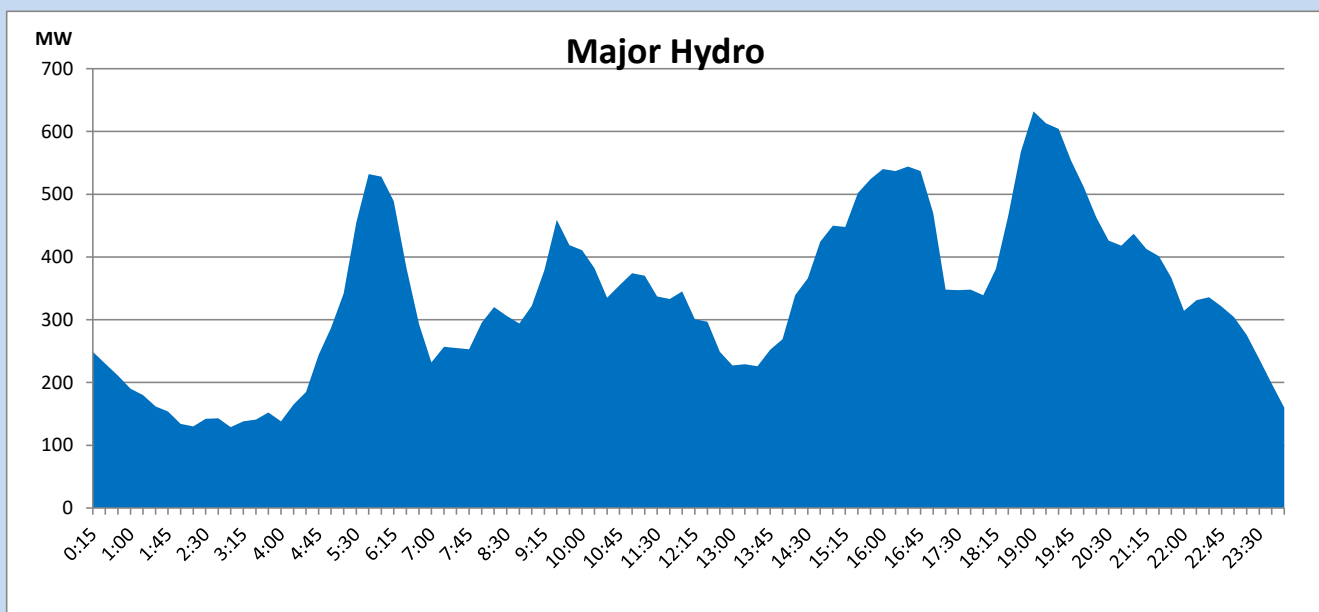
## IPP Oil Plant Generation during

May 26, 2023



## Major Hydro Generation during

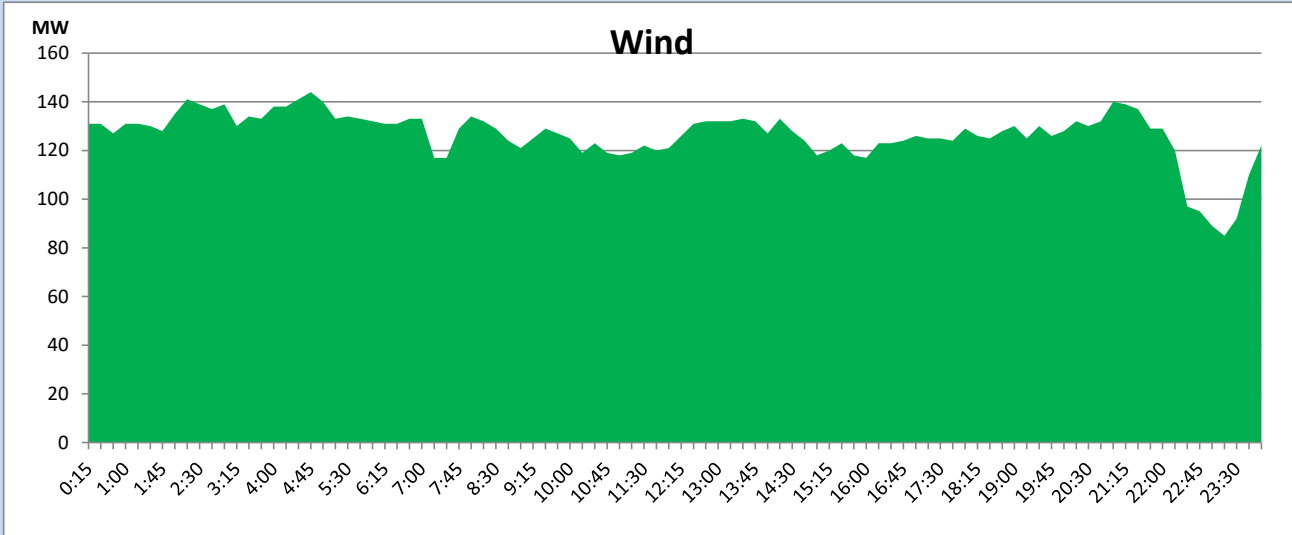
May 26, 2023



## Wind Generation during

May 26, 2023

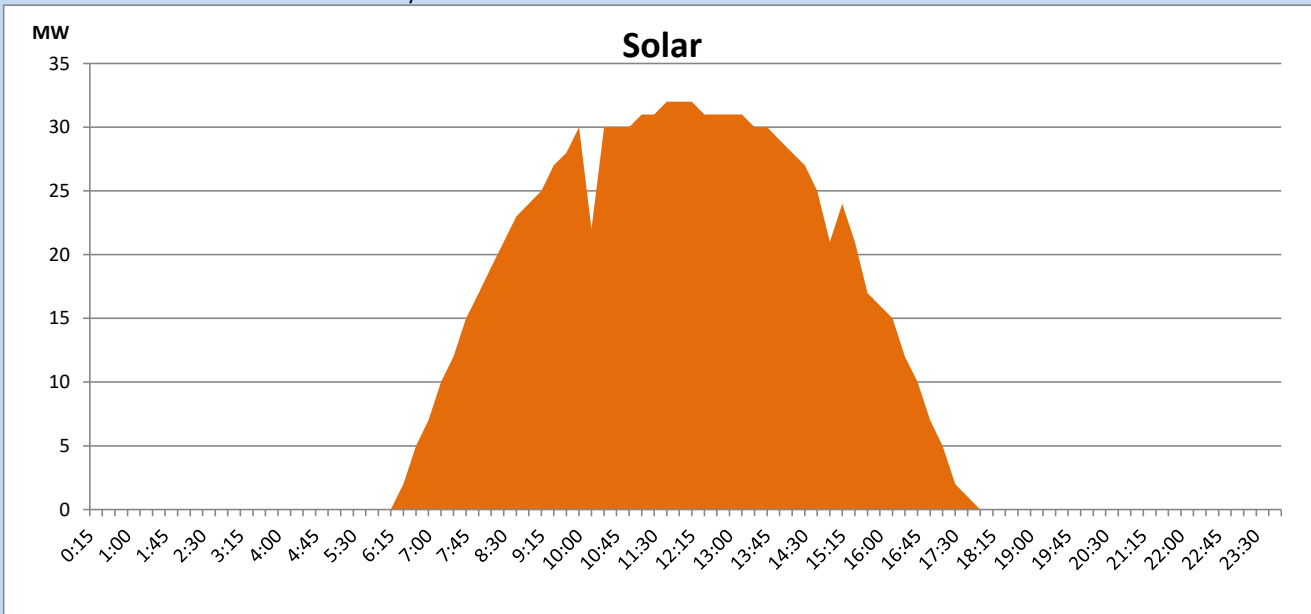
Based on Telemetered Power Stations only



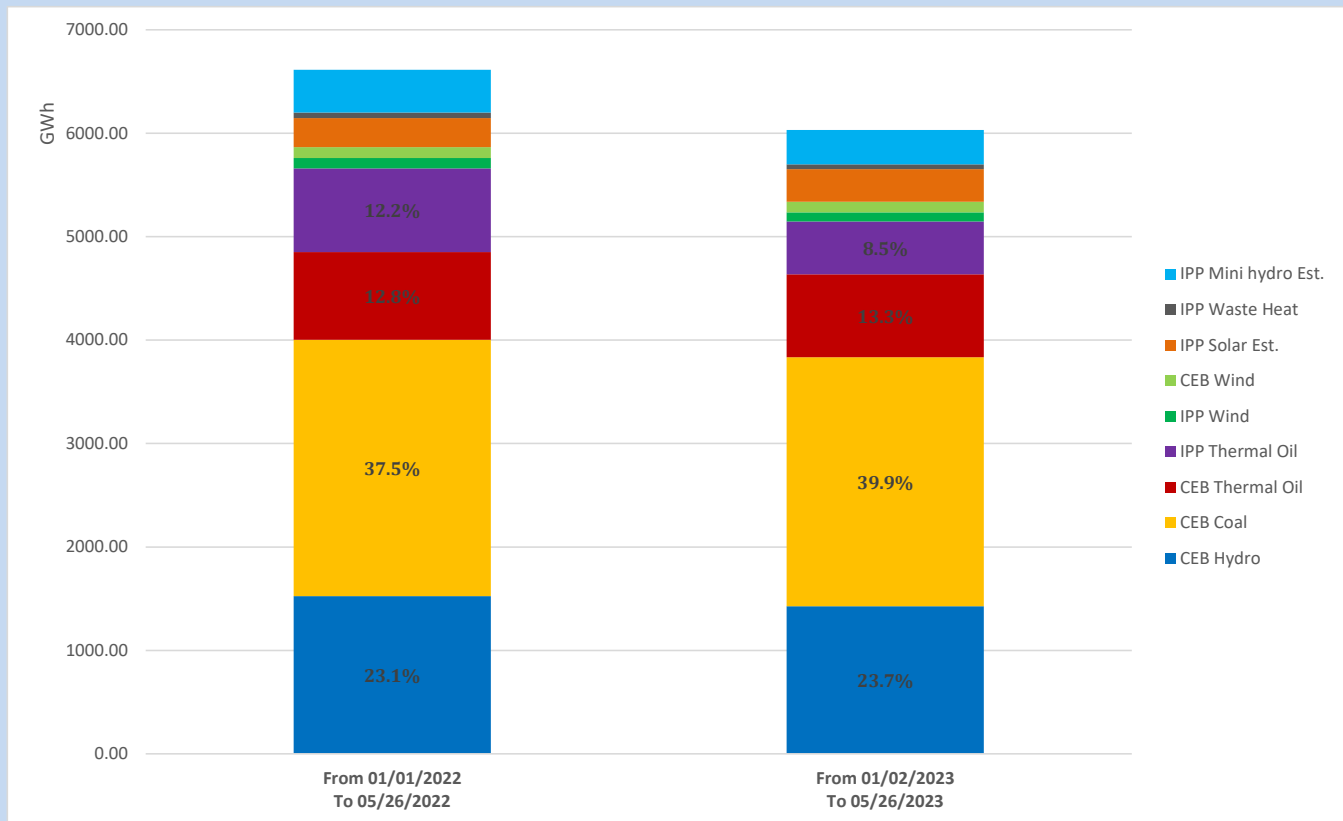
## Solar Generation during

May 26, 2023

Based on Telemetered Power Stations only



## Cumulative Dispatch Comparison with Last Year



The above figures are including contribution from roof top solar, non telemetered solar and mini hydro plants

### Thermal Plant Fuel types

| Power Station                  | Primary Fuel      |
|--------------------------------|-------------------|
| CEB Thermal                    |                   |
| Sapugaskanda 1                 | Heavy Fuel        |
| Sapugaskanda 2                 | Heavy Fuel        |
| Kelanitissa Small Gas Turbines | Auto Diesel       |
| GT 7 - Kelanitissa             | Auto Diesel       |
| Kelanitissa CCY                | Naphtha or Diesel |
| Lakvijaya 1                    | Coal              |
| Lakvijaya 2                    | Coal              |
| Lakvijaya 3                    | Coal              |
| Uthuru Janani                  | Heavy Fuel        |
| Barge CEB                      | Heavy Fuel        |
| KCCPS -2                       | Auto Diesel       |

| Power Station   | Primary Fuel             |
|-----------------|--------------------------|
| Private Thermal |                          |
| West Coast      | Auto Diesel / Heavy Fuel |

### Major Incidents reported during the day

May 26, 2023

1) WCP GT 01 tripped at 9:15hrs rejecting 56MW from the system due to a fuel system failure. At the same time, WCP ST de-loaded from 78MW to 30MW.

WCP GT 01 resumed generation at 16:04hrs.