

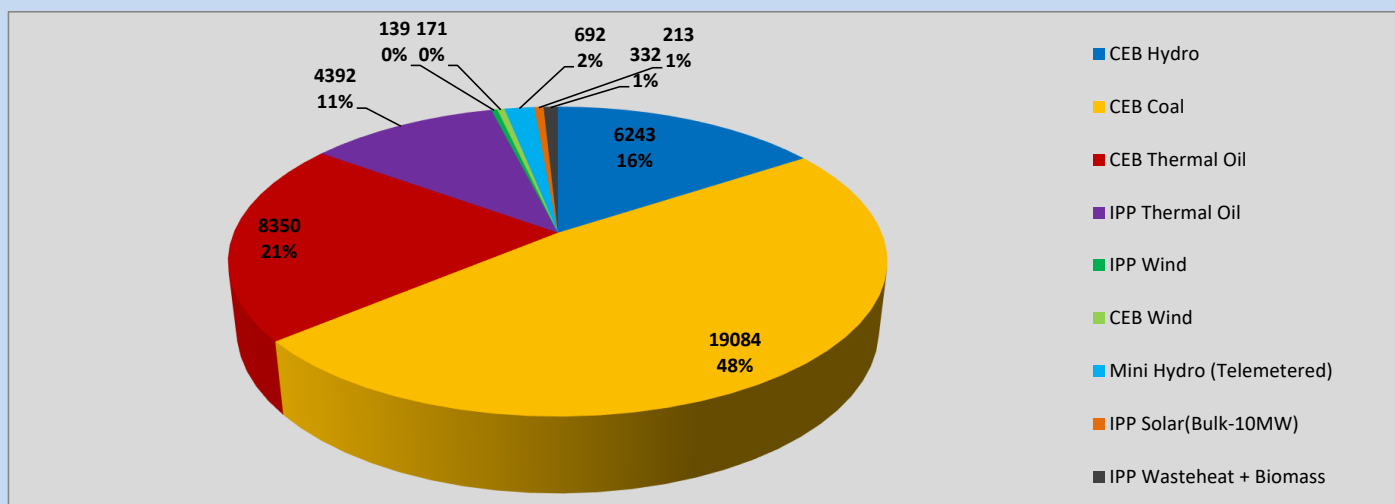
Generation and Reservoirs Statistics

April 26, 2023



PUBLIC UTILITIES COMMISSION OF SRI LANKA

Daily Generation Mix in MWh



Total Generation (Excluding estimated figures) =

39,616 MWh

Estimated figures of CEB generation report

Estimated unserved energy = 0.00 GWh

Estimated Mini Hydro (Non telemetered) = 1688 MWh

Estimated IPP Solar PV (Bulk 1-10MW) = 304 MWh

Estimated Solar Roof Top PV = 1640 MWh

Cumulative Dispatch

Following data excludes the contribution from roof top solar, non telemetered solar and mini hydro plants

For Current Month

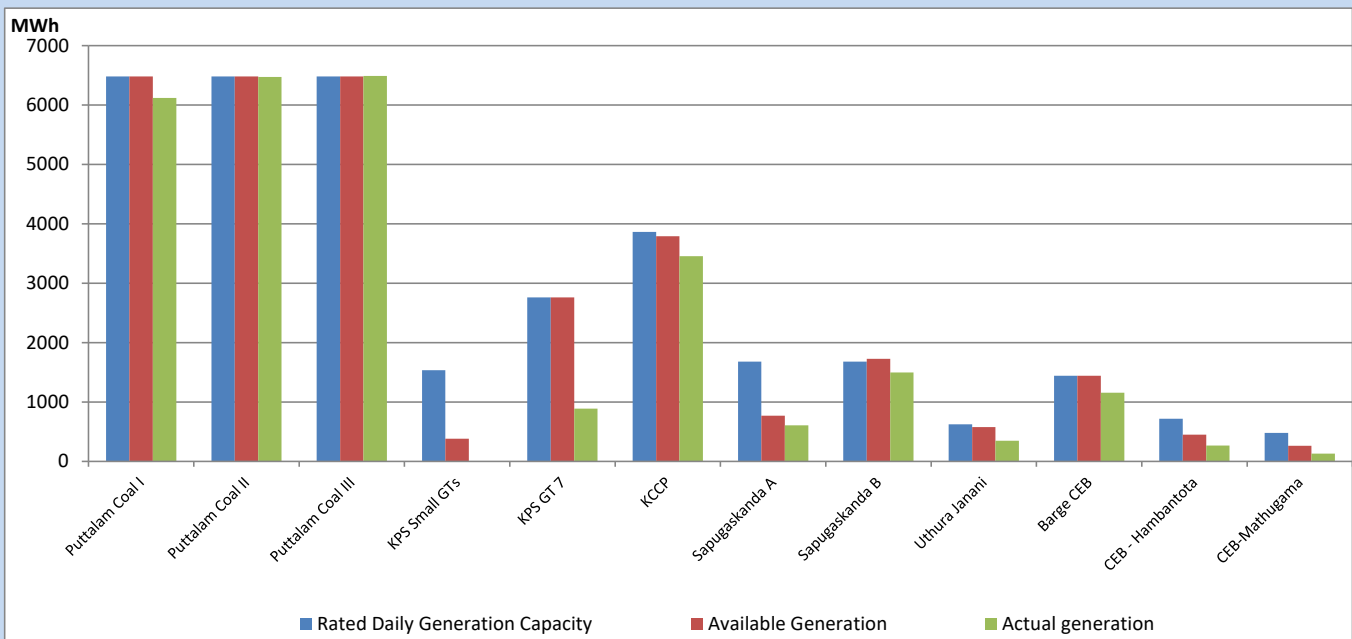
Category	Dispatch (GWh)	
CEB Hydro	256	25.87%
CEB Coal	388	39.23%
CEB Thermal Oil	159	16.08%
IPP Thermal	132	13.38%
SPP Wind	7	0.66%
CEB Wind	9	0.93%
Mini Hydro (Telemetered)	22	2.27%
IPP Solar(Bulk-10MW)	8	0.81%
IPP Wasteheat + BMP	8	0.78%
Total	988	

For Current Year

Category	Dispatch (GWh)	
CEB Hydro	1,177	26.72%
CEB Coal	1,910	43.37%
CEB Thermal Oil	629	14.28%
IPP Thermal	402	9.13%
SPP Wind	57	1.30%
CEB Wind	69	1.58%
Mini Hydro (Telemetered)	91	2.07%
IPP Solar(Bulk-10MW)	34	0.76%
IPP Wasteheat	34	0.77%
Total	4,404	

CEB owned Thermal Plant Dispatch

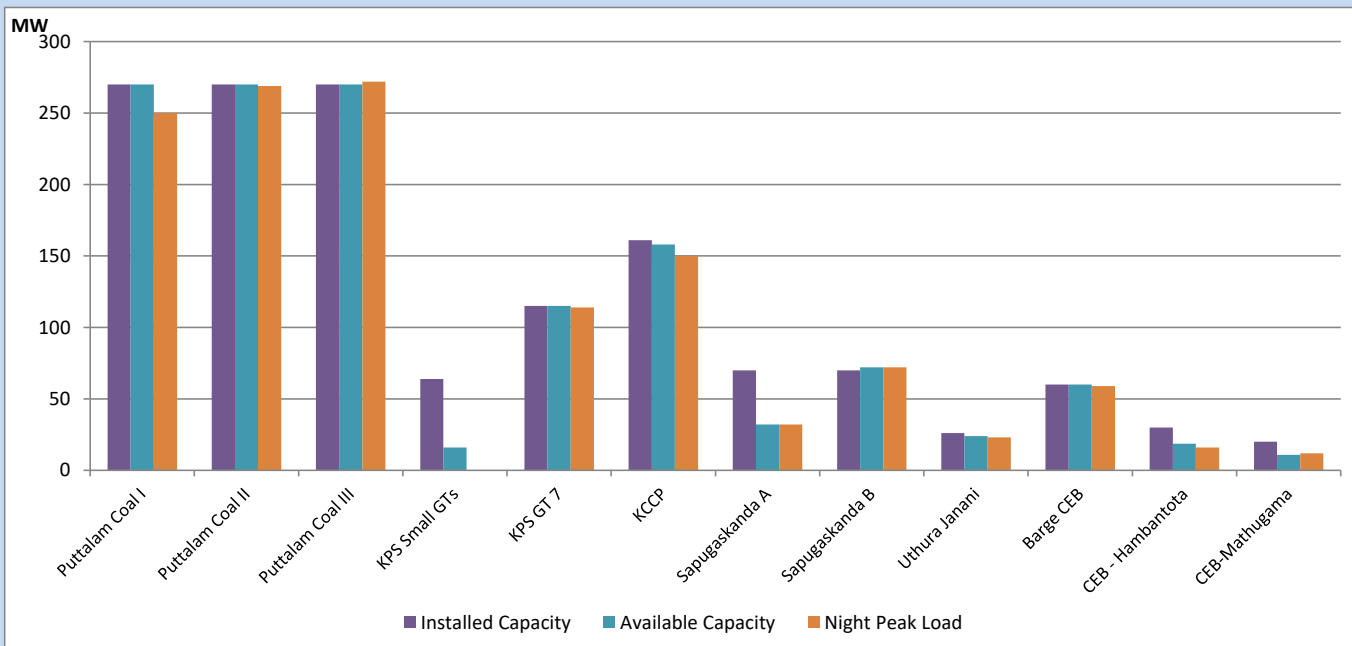
April 26, 2023



Available Generation is estimated based on plant availability at 6.00am on

April 27, 2023

CEB owned Thermal Plant Loading at the Night Peak

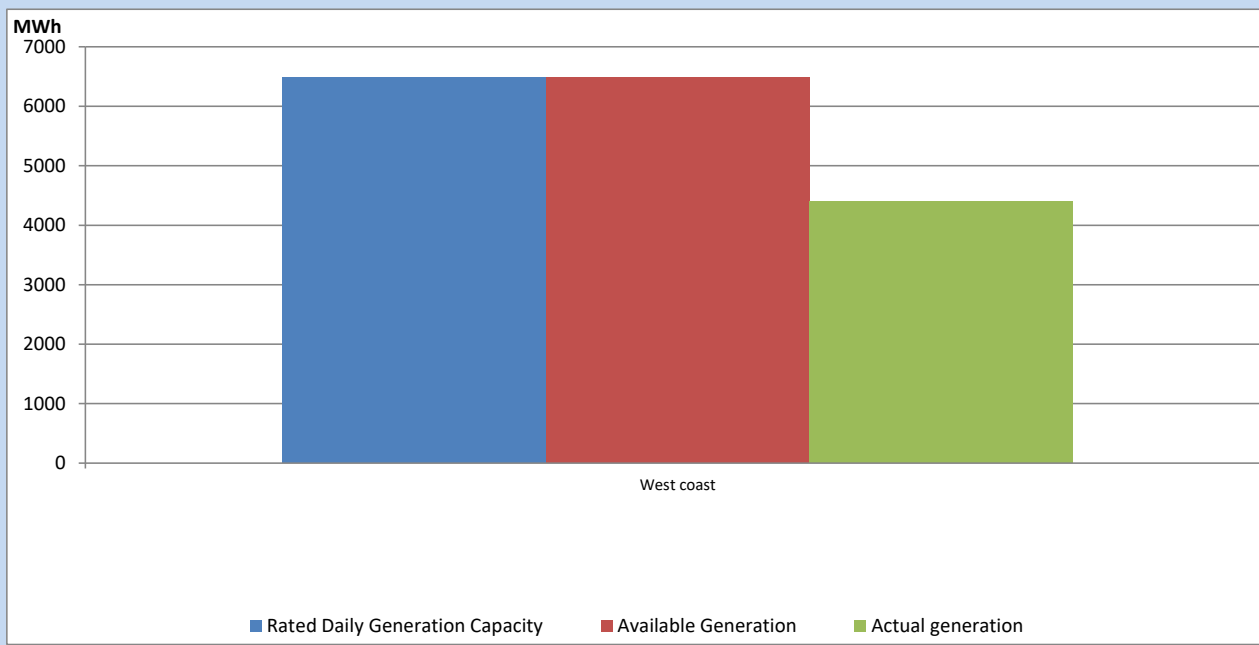


Note- Plant avilability is recorded at 6.00 am on

April 27, 2023

IPP owned Thermal Plant Dispatch

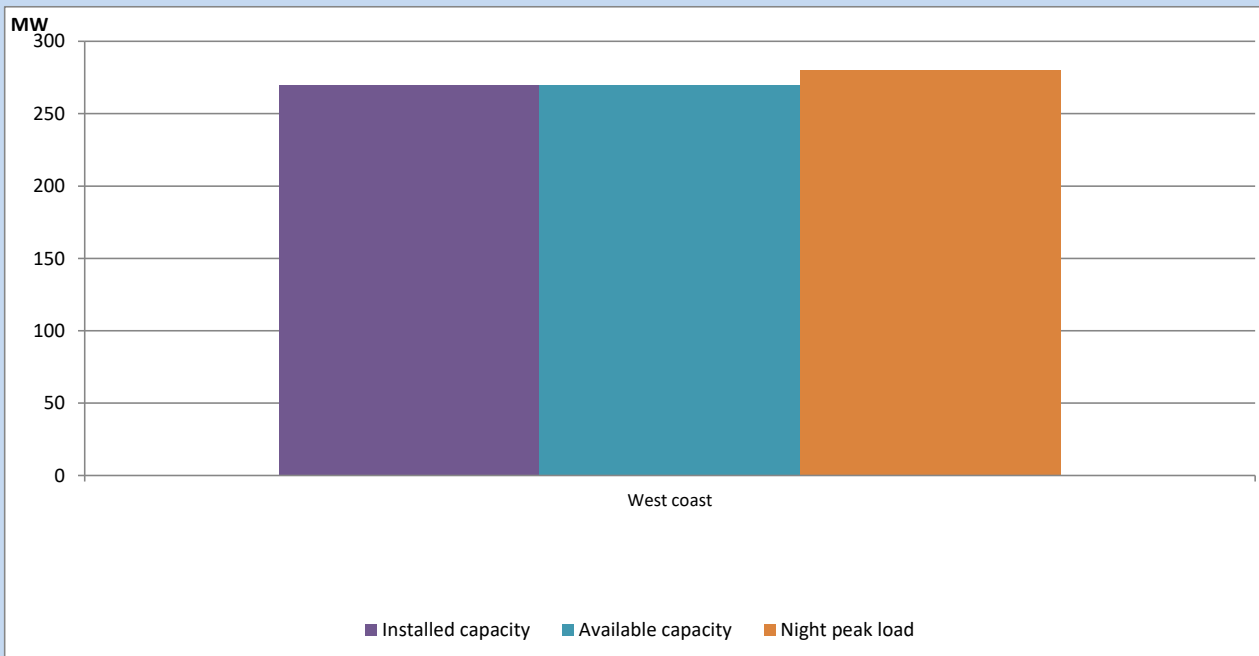
April 26, 2023



Available Generation is estimated based on plant availability at 6.00am on

April 27, 2023

IPP owned Thermal Plant Loading at the Night Peak

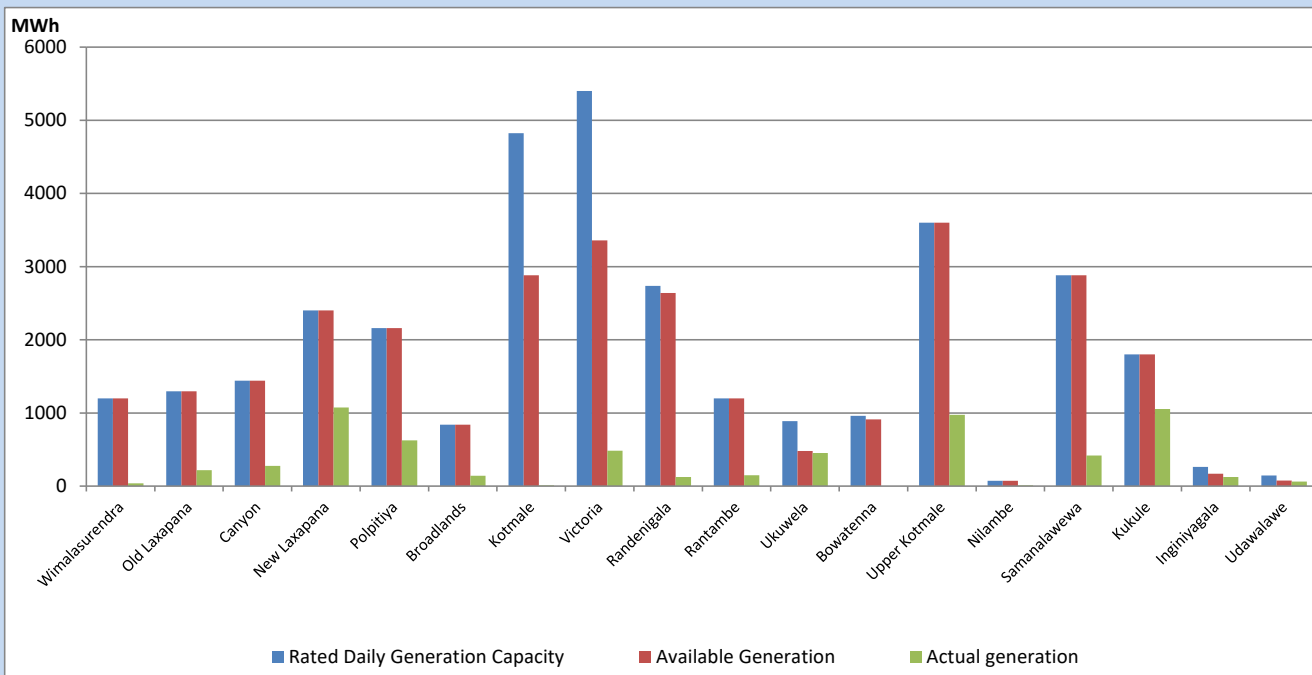


Note- Plant availability is recorded at 6.00 am on

April 27, 2023

Major Hydro Plant Dispatch

April 26, 2023

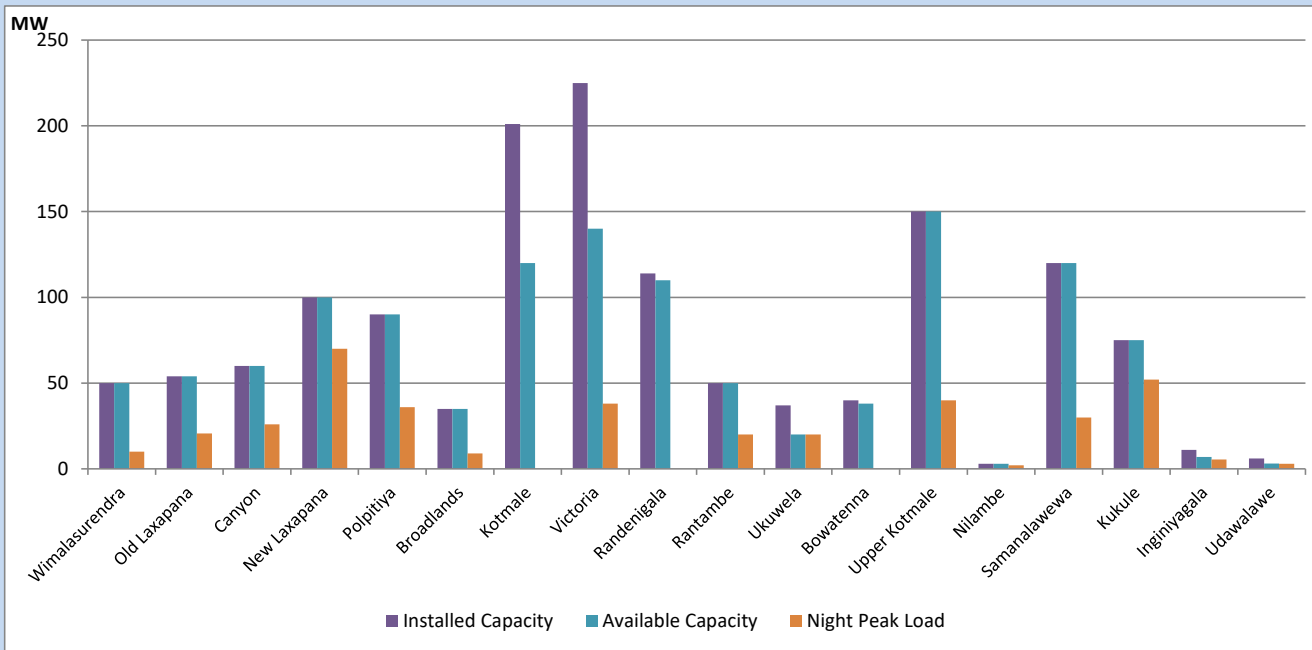


Available Generation is estimated based on plant availability at 6.00am on
Broadlands power plant is operating in the Commissioning Stage

April 27, 2023

Major Hydro Plant Loading at Night Peak

April 26, 2023



Note- Plant availability is recorded at 6.00 am on
Broadlands power plant is operating in the Commissioning Stage

April 27, 2023

Summary of Major Plant performance

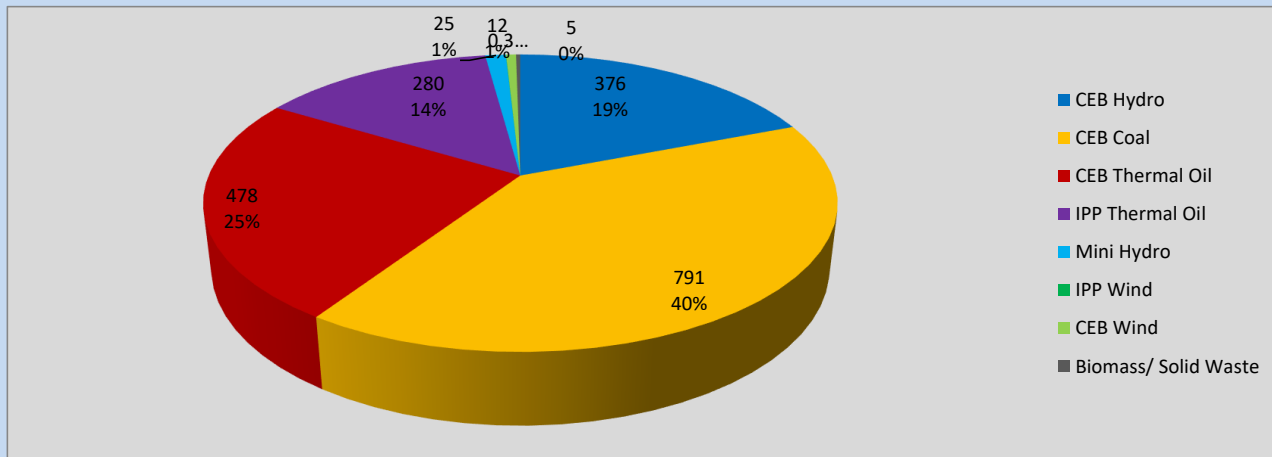
Plant	Installed Capacity	Plant Availability	Night peak Load	Plant Dispatch
	(MW)	(MW)	(MW)	(MWh)
Wimalasurendra	50	50	10	38
Old Laxapana	54	54	21	218
Canyon	60	60	26	277
New Laxapana	100	100	70	1,076
Polpitiya	90	90	36	626
Broadlands	35	35	9	142
Kotmale	201	120	0	10
Victoria	225	140	38	485
Randenigala	114	110	0	126
Rantambe	50	50	20	148
Ukuwela	37	20	20	453
Bowatenna	40	38	0	0
Upper Kotmale	150	150	40	974
Nilambe	3	3	2	10
Samanalawewa	120	120	30	419
Kukule	75	75	52	1,054
Inginiyagala	11	7	6	126
Udawalawe	6	3	3	61
Puttalam Coal I	270	270	250	6,121
Puttalam Coal II	270	270	269	6,473
Puttalam Coal III	270	270	272	6,490
KPS Small GTs	64	16	0	0
KPS GT 7	115	115	114	887
KCCP	161	158	150	3,457
Sapugaskanda A	70	32	32	606
Sapugaskanda B	70	72	72	1,499
Uthura Janani	26	24	23	347
Barge CEB	60	60	59	1,156
CEB-Hambantota	30	19	16	266
CEB-Mathugama	20	11	12	132
ACE Matara	24	0	0	0
Asia Power	50	0	0	0
Sojitz Kelanitissa	163	0	0	0
West Coast	270	270	280	4,392
Nothern Power	36	0	0	0
ACE Embilipitiya	93	0	0	0
Total	3,483	2,812	1,973	39,616

Plant availability is the availability recorded at 6 am on

April 27, 2023

Contribution to the Night Peak in MW

April 26, 2023

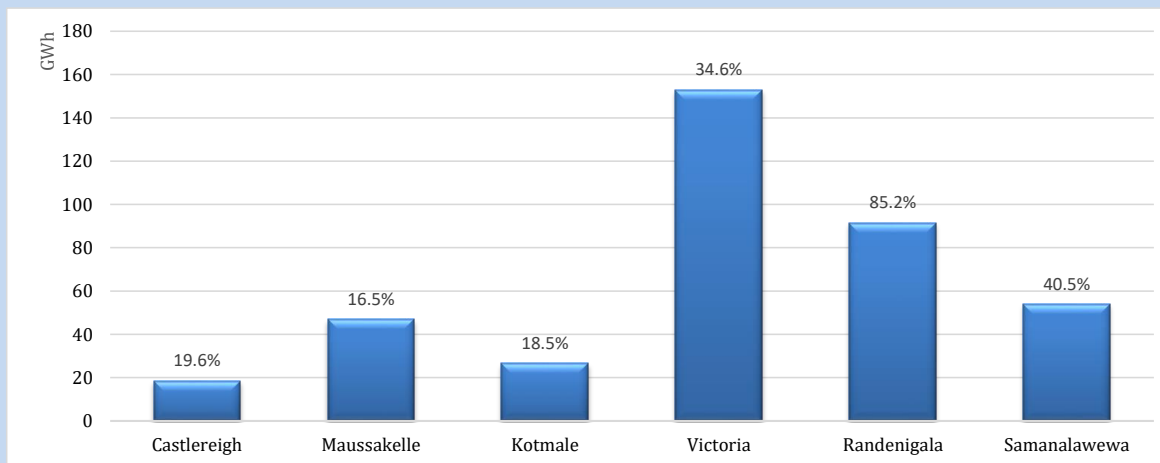


Night Peak*	1,967 MW
Day Peak	1,958 MW
Minimum Demand	1,187 MW

Above figures are excluding contribution from roof top solar, non telemetered solar and mini hydro plants

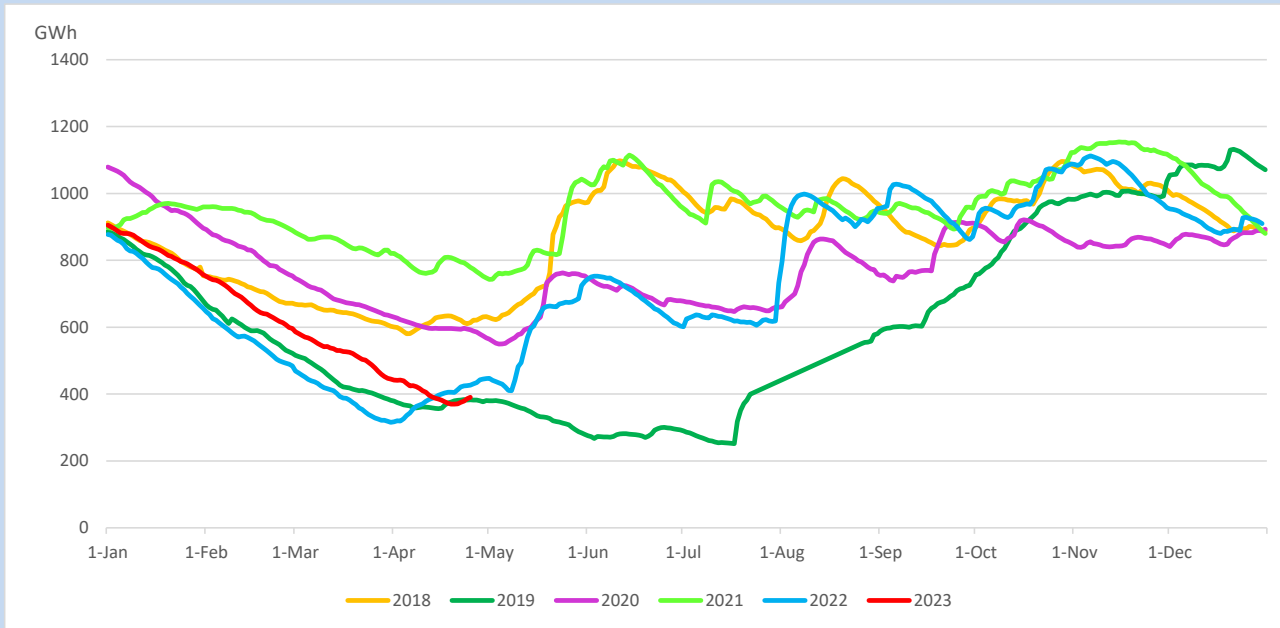
Reservoir Levels -

as at 06.00 Hr on April 27, 2023

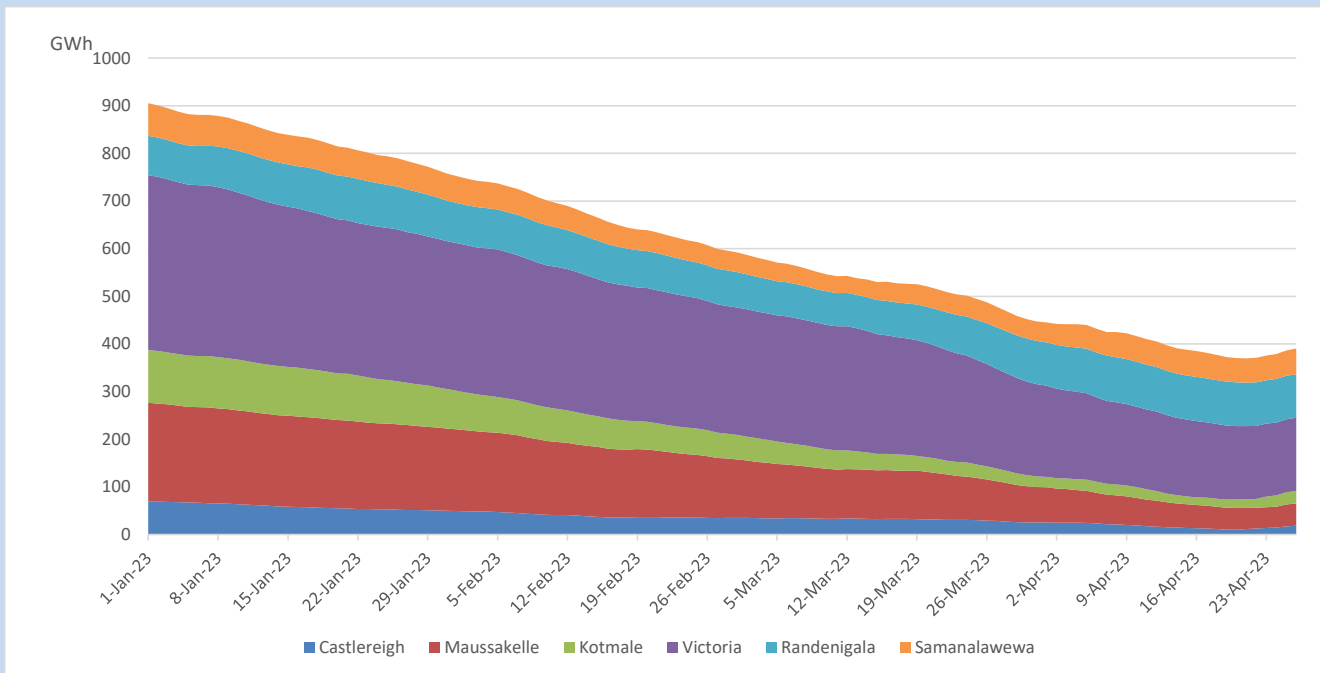


Total Reservoir Level	390.6 GWh
% of Total capacity	32.4%

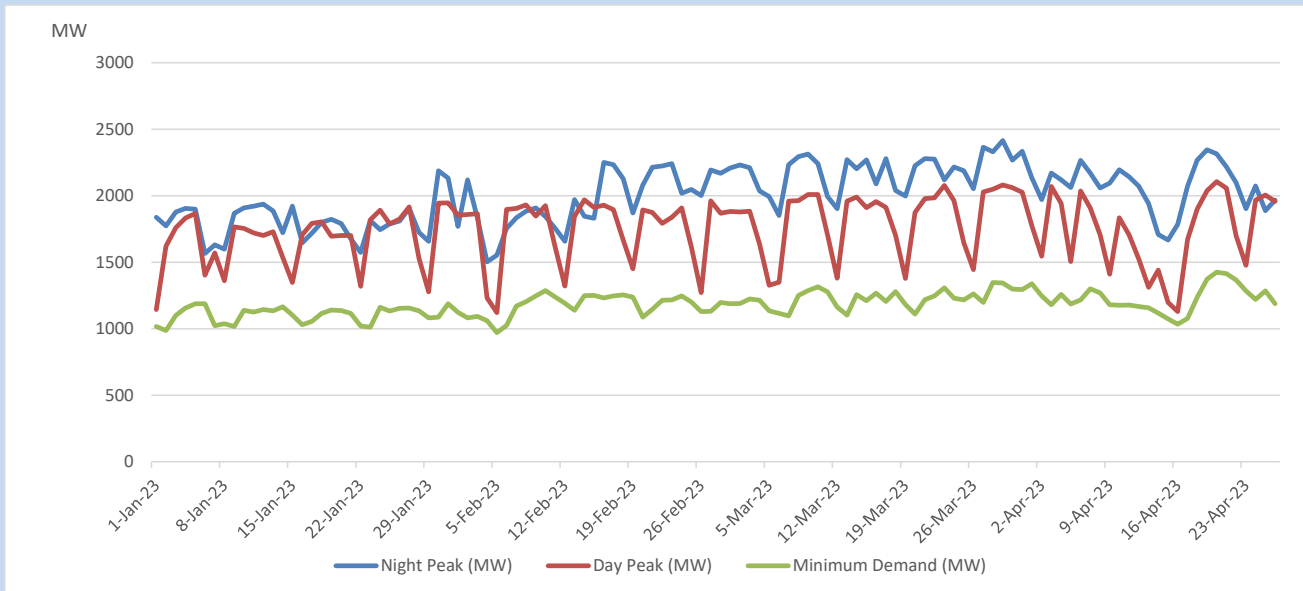
Comparison of Total Reservoir Storage Levels with Past Years



Variation of Major Hydro Reservoir Levels in the current year (GWh)



Variation of Demand during the current year

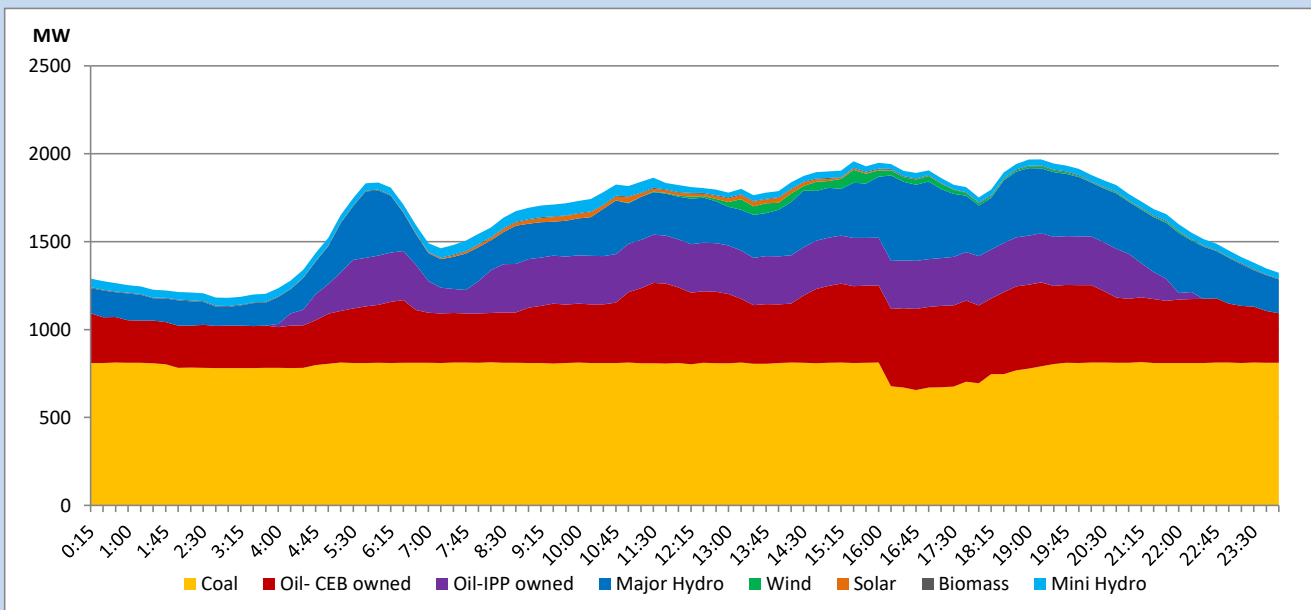


The above figures are excluding contribution from roof top solar, non telemetered solar and mini hydro plants

Daily Load Curve

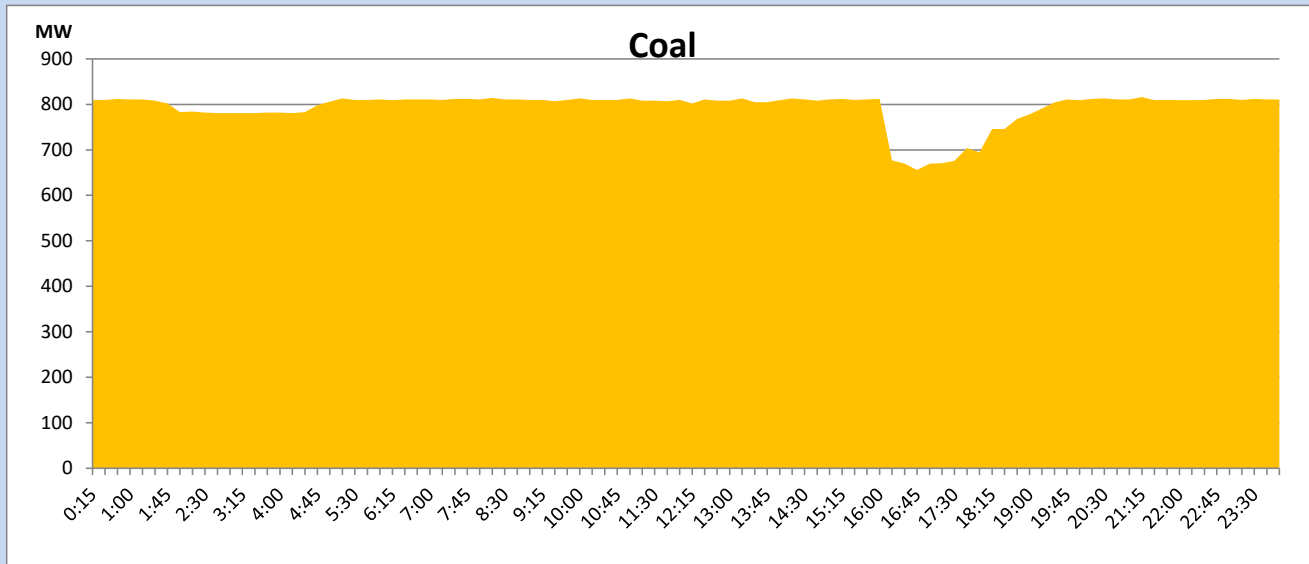
April 26, 2023

Solar and wind data is based on Telemetered Power Stations only



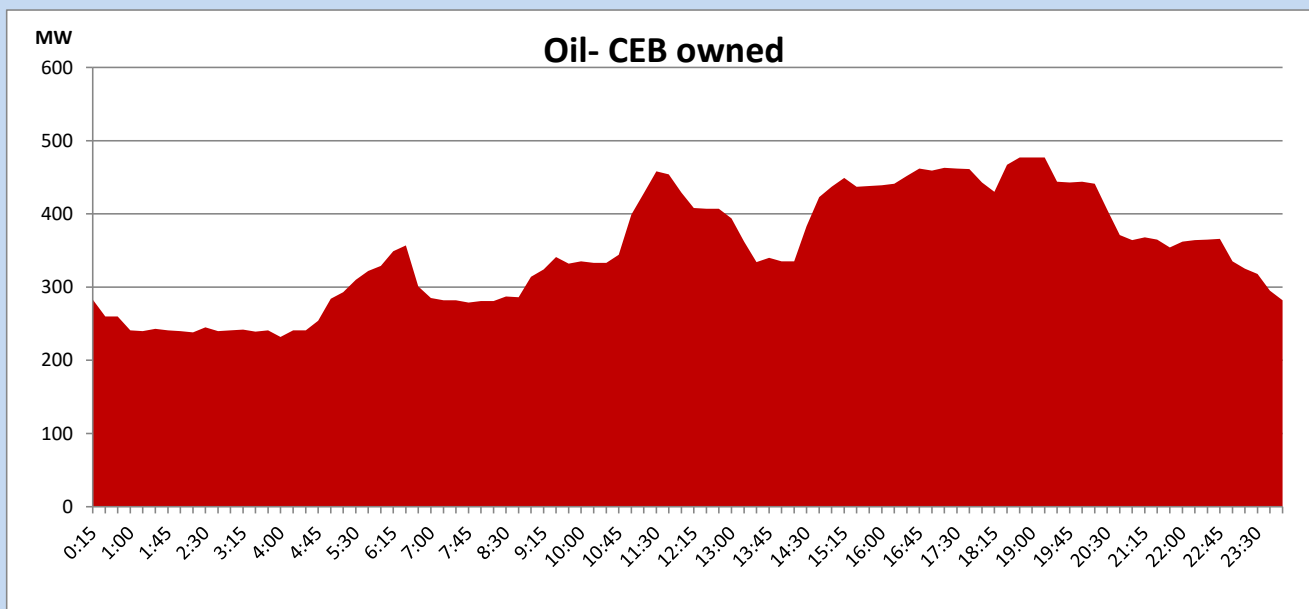
Coal Generation during

April 26, 2023



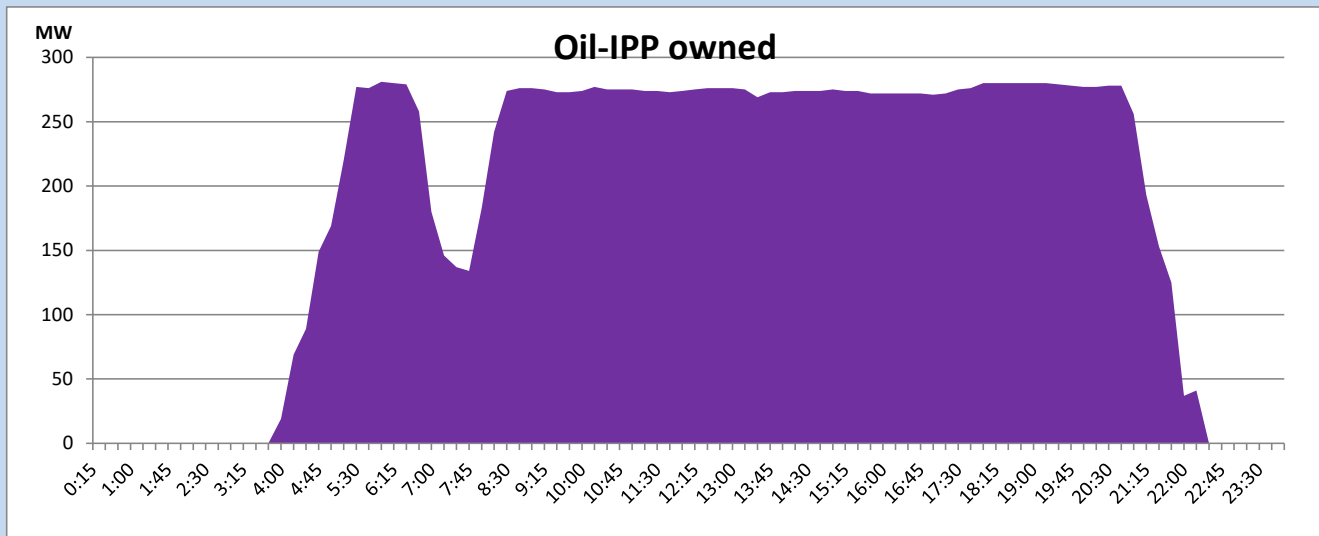
CEB Oil Plant Generation during

April 26, 2023



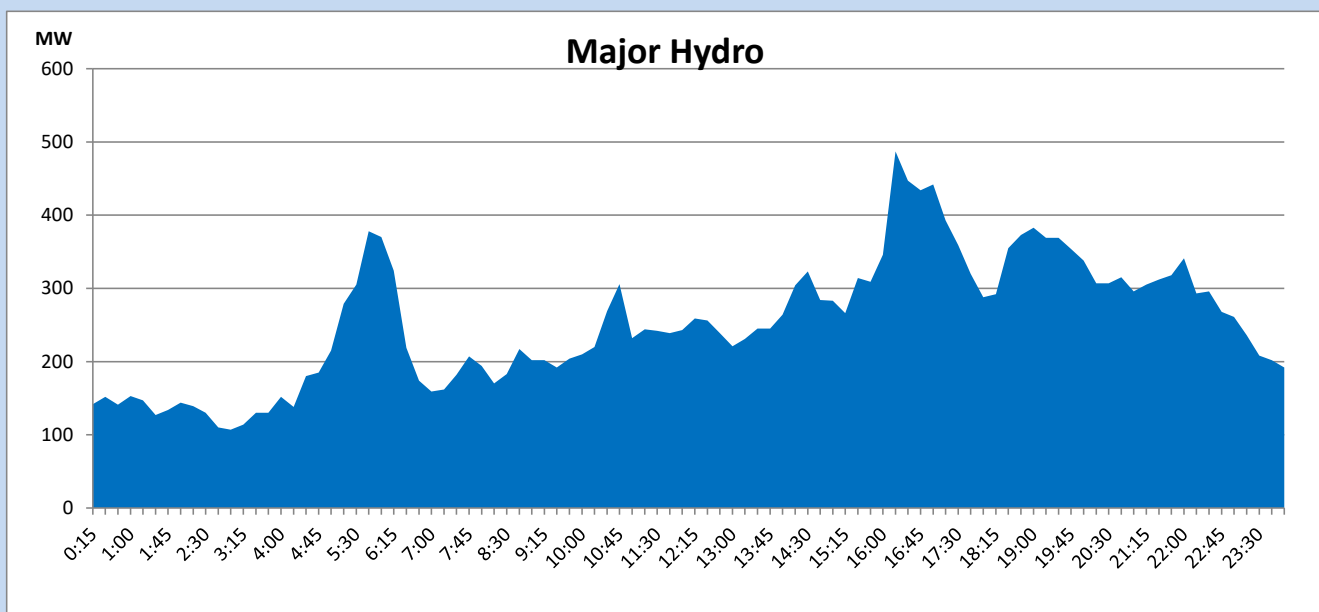
IPP Oil Plant Generation during

April 26, 2023



Major Hydro Generation during

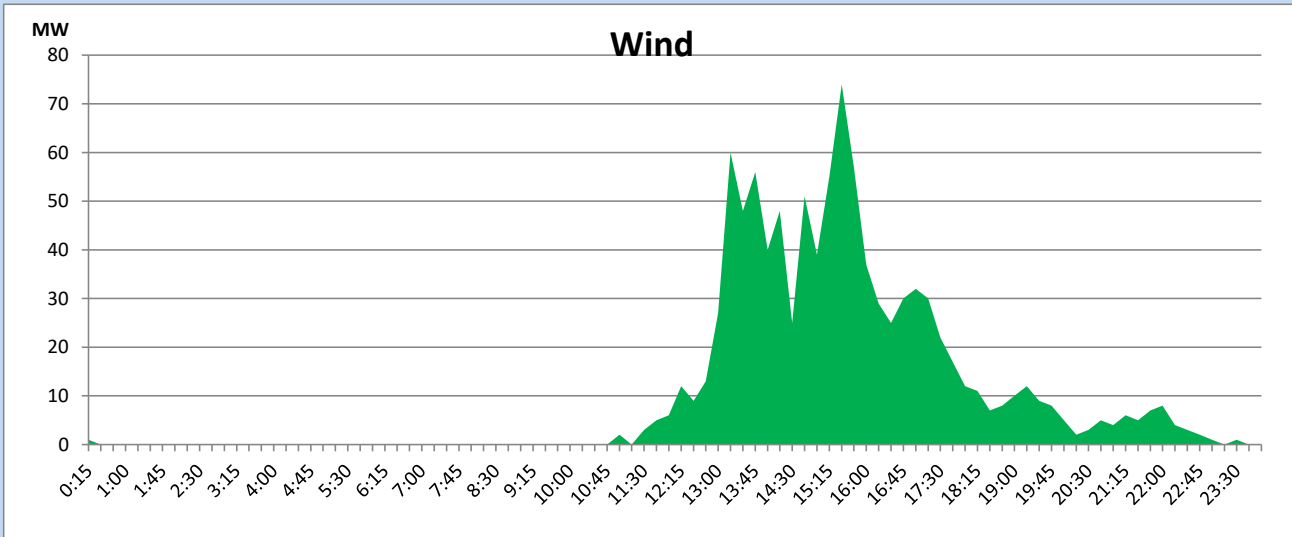
April 26, 2023



Wind Generation during

April 26, 2023

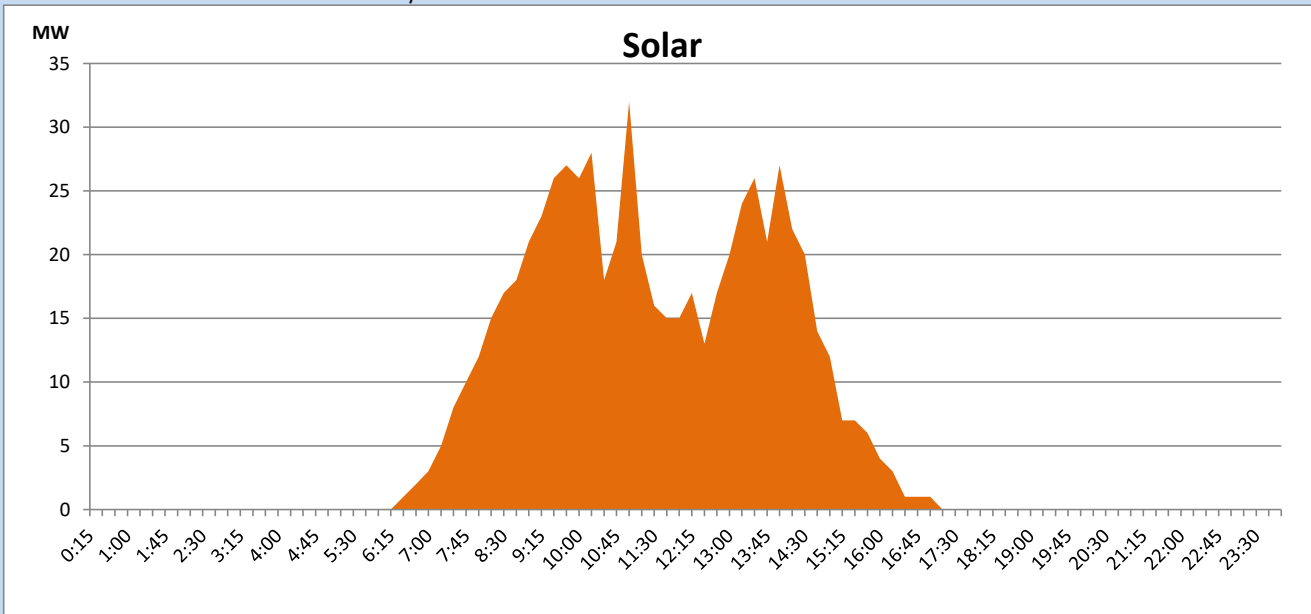
Based on Telemetered Power Stations only



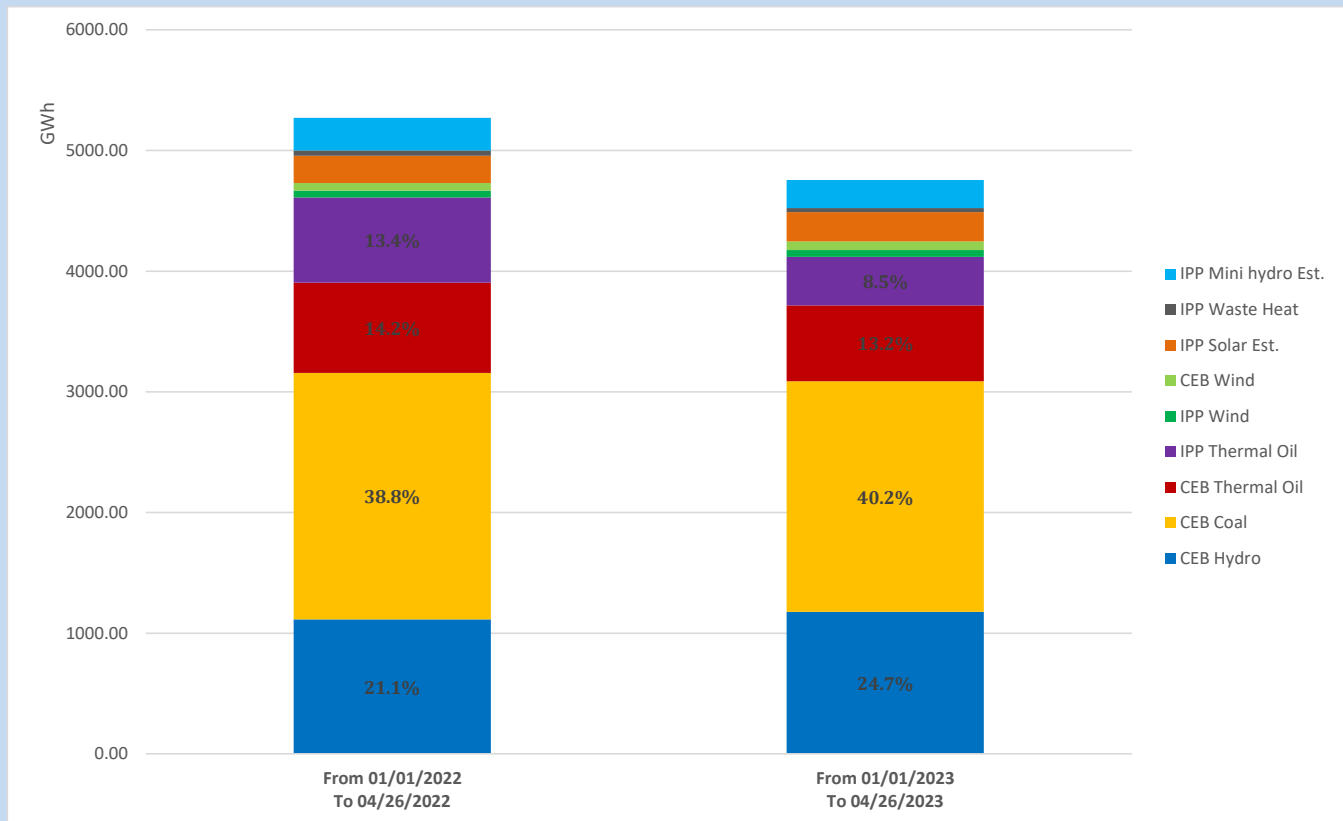
Solar Generation during

April 26, 2023

Based on Telemetered Power Stations only



Cumulative Dispatch Comparison with Last Year



The above figures are including contribution from roof top solar, non telemetered solar and mini hydro plants

Thermal Plant Fuel types

Power Station	Primary Fuel
CEB Thermal	
Sapugaskanda 1	Heavy Fuel
Sapugaskanda 2	Heavy Fuel
Kelanitissa Small Gas Turbines	Auto Diesel
GT 7 - Kelanitissa	Auto Diesel
Kelanitissa CCY	Naphtha or Diesel
Lakvijaya 1	Coal
Lakvijaya 2	Coal
Lakvijaya 3	Coal
Uthuru Janani	Heavy Fuel
Barge CEB	Heavy Fuel

Power Station	Primary Fuel
Private Thermal	
West Coast	Auto Diesel / Heavy Fuel

Major Incidents reported during the day

April 26, 2023

- 1) LVPS Unit -01 run backed at 16:05hrs to 130MW(Net) due to boiler feed pump failure. LVPS Unit -01 reached 270MW (net) at 19:50hrs.
- 2) Kosgama-Polpitiya cct tripped and A/R from Kosgama end and tripped from Polpitiya end at 16:59hrs due to the operation of distance protection. At the same time, Seethawaka-Broadland cct tripped and A/R from both ends due to the operation of distance protection. Polpitiya - Kosgama cct was normalized at 17:09hrs.
- 3) Broadland - Seethawaka cct tripped and A/R from both ends at 17:06hrs. At the same time, Polpitiya - Maliboda cct tripped from Polpitiya end and Broadland generator unit 01 was tripped rejecting 16MW. Polpitiya - Maliboda cct was normalized at 17:17hrs and Broadland unit 01 resumed generation at 17:26hrs.
- 4) Seethawaka - Broadland cct tripped and A/R from Seethawaka end at 17:29hrs due to the operation of distance protection.
- 5) Biyagama - Kotmale cct 01 tripped and A/R from both ends at 17:44hrs due to the operation of differential protection.