

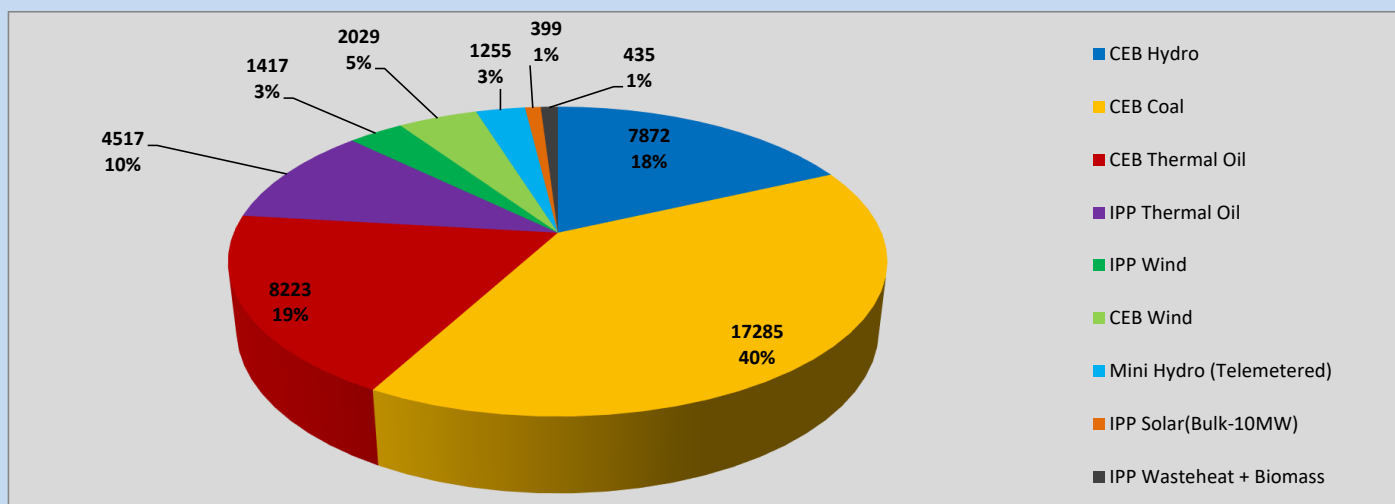
Generation and Reservoirs Statistics

May 25, 2023



PUBLIC UTILITIES COMMISSION OF SRI LANKA

Daily Generation Mix in MWh



Total Generation (Excluding estimated figures) =

43,432 MWh

Estimated figures of CEB generation report

Estimated unserved energy = 0.00 GWh

Estimated Mini Hydro (Non telemetered) = 2735 MWh

Estimated IPP Solar PV (Bulk 1-10MW) = 304 MWh

Estimated Solar Roof Top PV = 1920 MWh

Cumulative Dispatch

Following data excludes the contribution from roof top solar, non telemetered solar and mini hydro plants

For Current Month

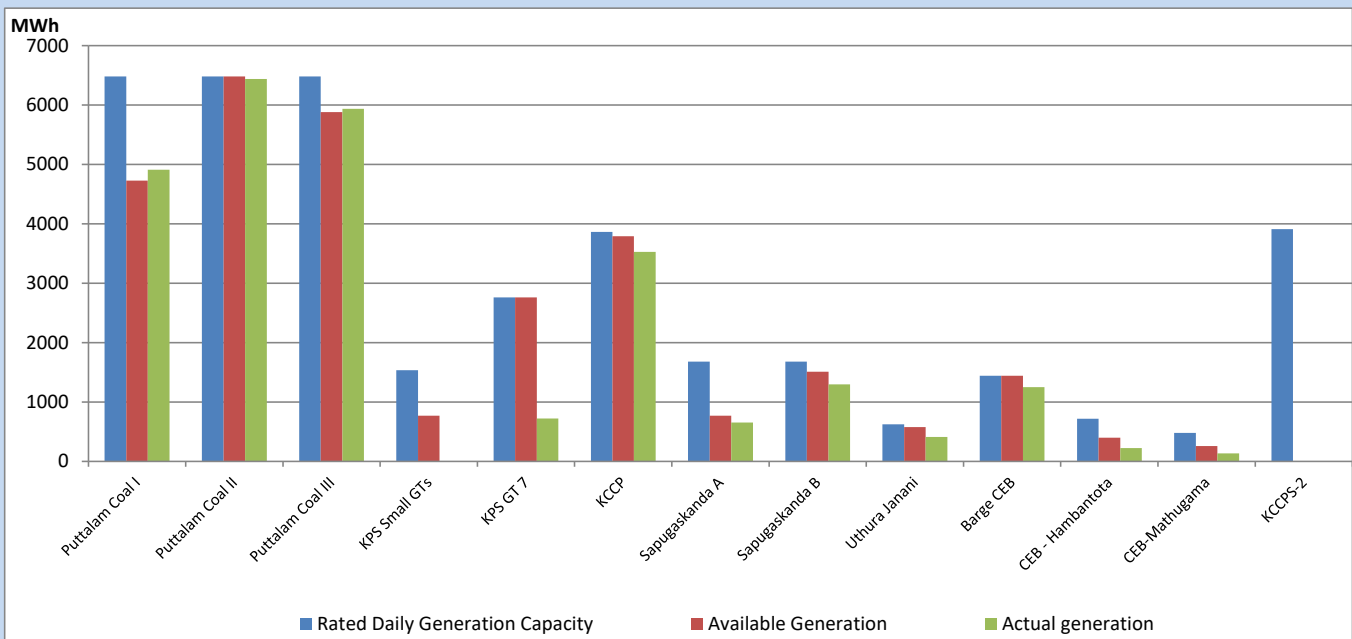
Category	Dispatch (GWh)	
CEB Hydro	219	22.93%
CEB Coal	406	42.52%
CEB Thermal Oil	138	14.51%
IPP Thermal	90	9.46%
SPP Wind	27	2.80%
CEB Wind	32	3.34%
Mini Hydro (Telemetered)	26	2.70%
IPP Solar (Bulk-10MW)	7	0.73%
IPP Wasteheat + BMP	10	1.01%
Total	954	

For Current Year

Category	Dispatch (GWh)	
CEB Hydro	1,420	25.78%
CEB Coal	2,393	43.44%
CEB Thermal Oil	794	14.41%
IPP Thermal	508	9.22%
SPP Wind	85	1.54%
CEB Wind	102	1.85%
Mini Hydro (Telemetered)	121	2.20%
IPP Solar (Bulk-10MW)	42	0.75%
IPP Wasteheat	44	0.81%
Total	5,508	

CEB owned Thermal Plant Dispatch

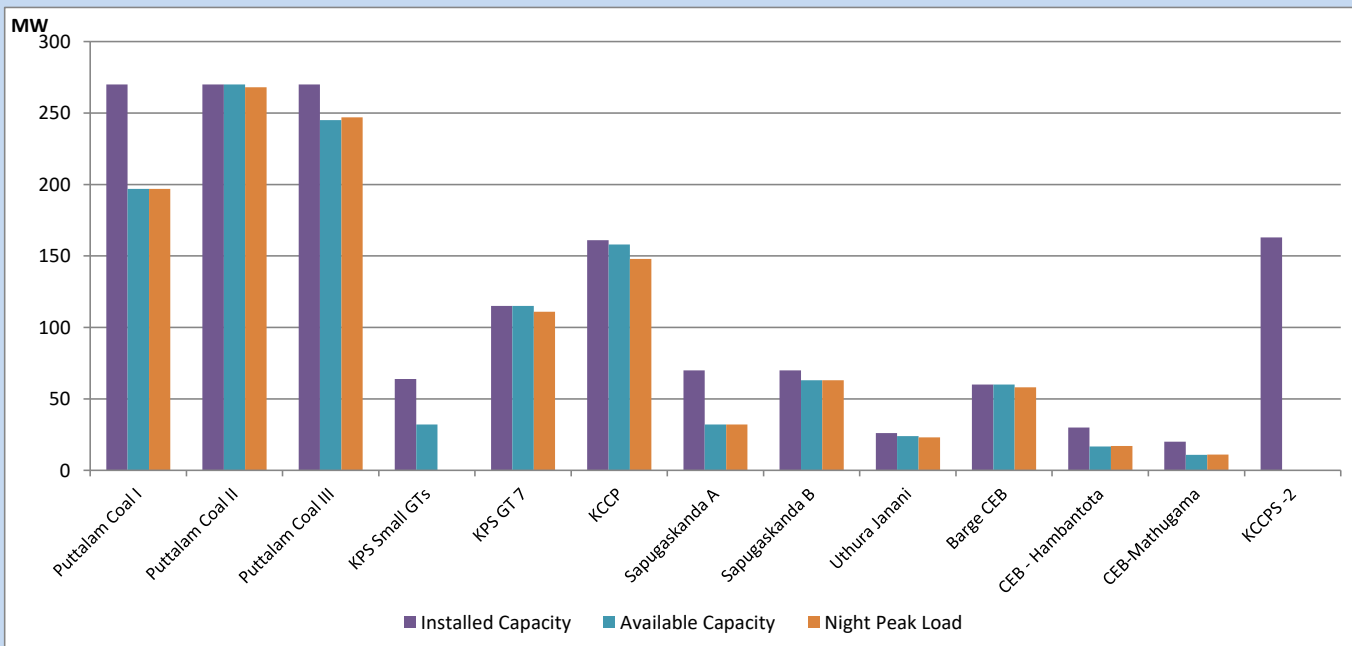
May 25, 2023



Available Generation is estimated based on plant availability at 6.00am on

May 26, 2023

CEB owned Thermal Plant Loading at the Night Peak



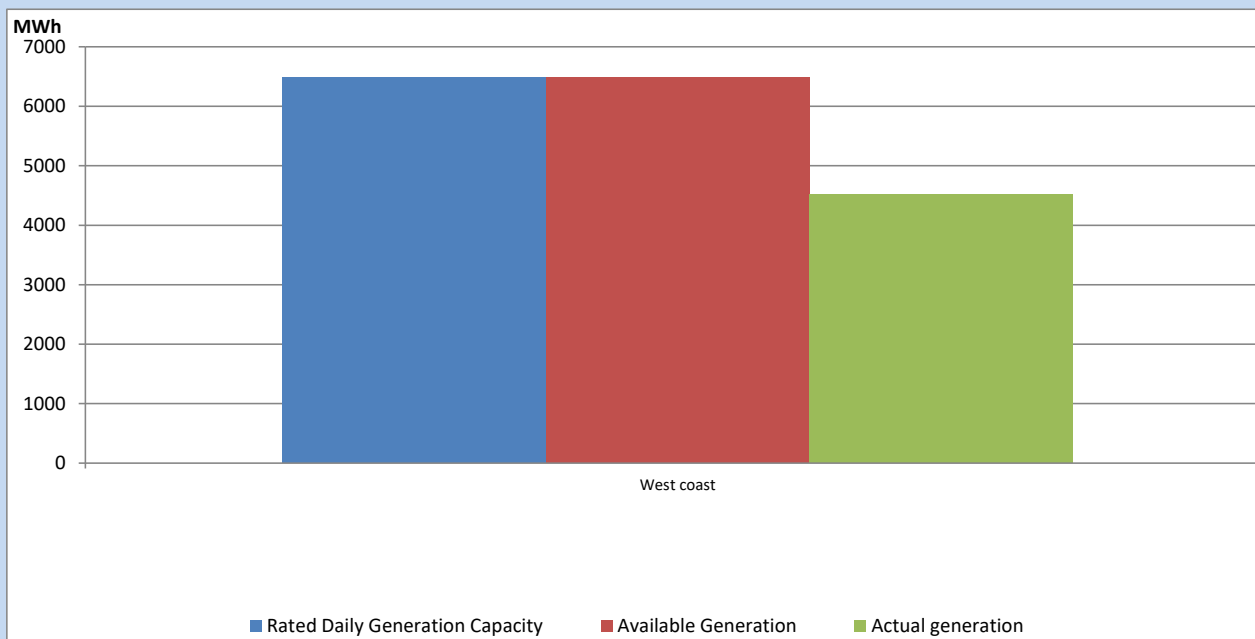
Note-

Plant availability is recorded at 6.00 am on

May 26, 2023

IPP owned Thermal Plant Dispatch

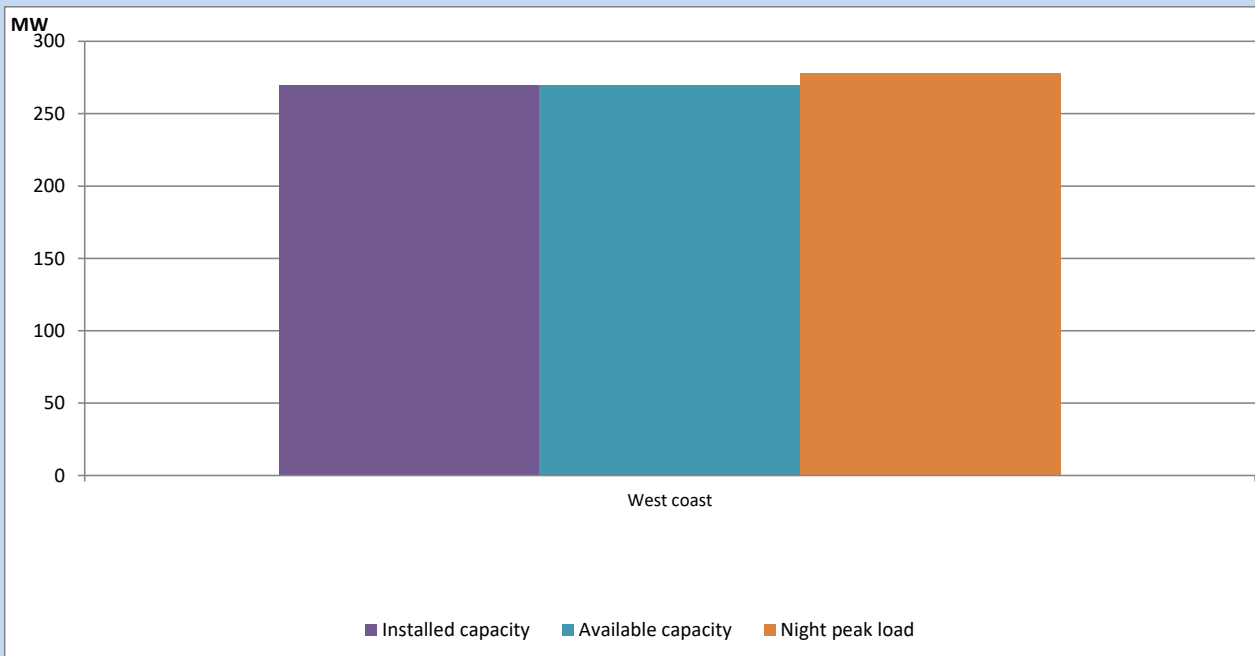
May 25, 2023



Available Generation is estimated based on plant availability at 6.00am on

May 26, 2023

IPP owned Thermal Plant Loading at the Night Peak

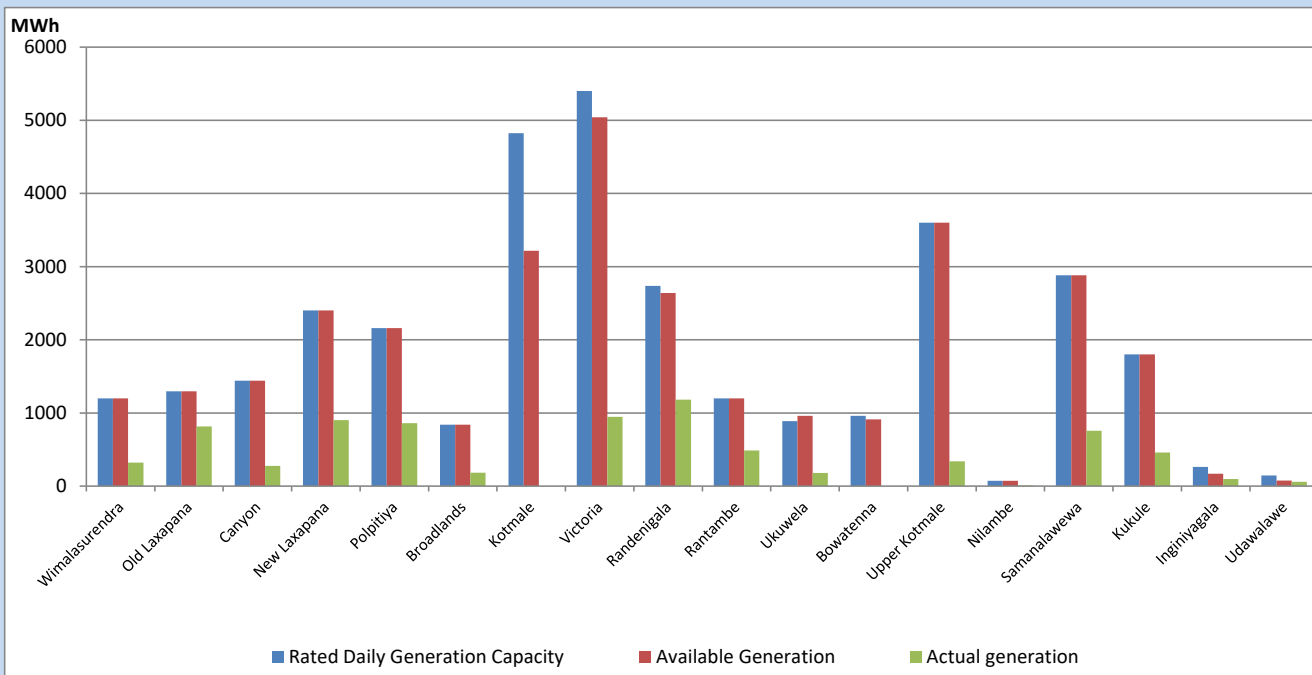


Note- Plant availability is recorded at 6.00 am on

May 26, 2023

Major Hydro Plant Dispatch

May 25, 2023

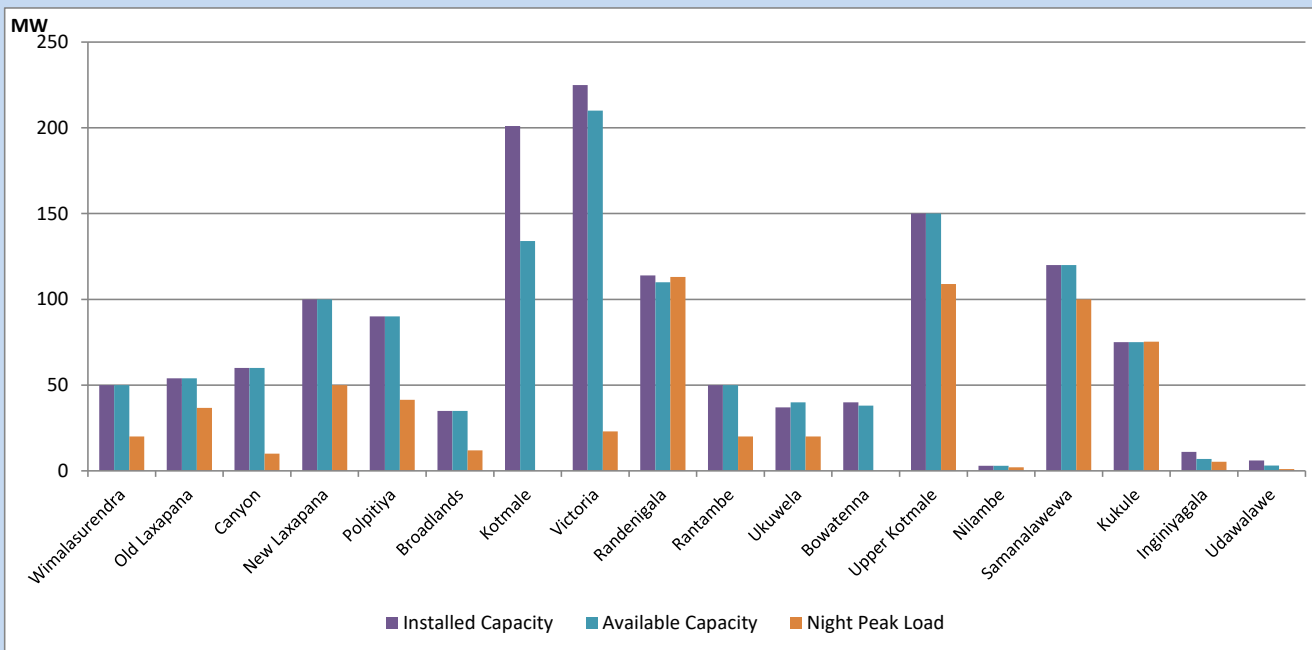


Available Generation is estimated based on plant availability at 6.00am on
Broadlands power plant is operating in the Commissioning Stage

May 26, 2023

Major Hydro Plant Loading at Night Peak

May 25, 2023



Note- Plant availability is recorded at 6.00 am on
Broadlands power plant is operating in the Commissioning Stage

May 26, 2023

Summary of Major Plant performance

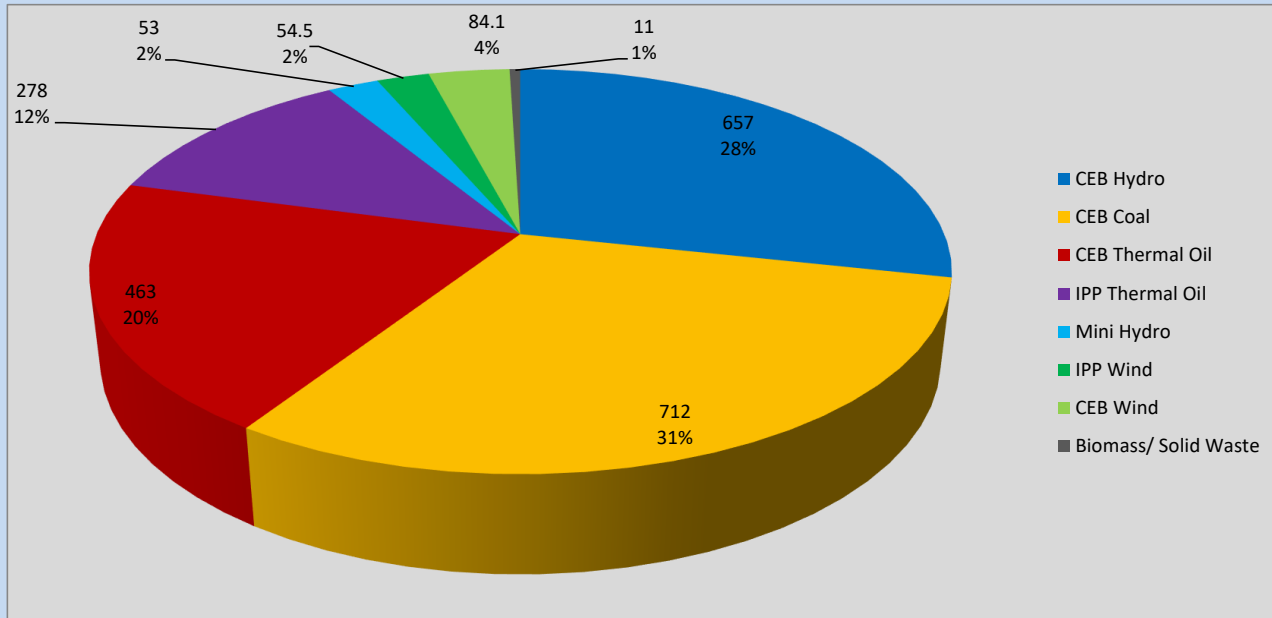
Plant	Installed Capacity	Plant Availability	Night peak Load	Plant Dispatch
	(MW)	(MW)	(MW)	(MWh)
Wimalasurendra	50	50	20	322
Old Laxapana	54	54	37	817
Canyon	60	60	10	278
New Laxapana	100	100	50	901
Polpitiya	90	90	42	860
Broadlands	35	35	12	182
Kotmale	201	134	0	0
Victoria	225	210	23	947
Randenigala	114	110	113	1,183
Rantambe	50	50	20	486
Ukuwela	37	40	20	181
Bowatenna	40	38	0	0
Upper Kotmale	150	150	109	338
Nilambe	3	3	2	10
Samanalawewa	120	120	100	757
Kukule	75	75	75	458
Inginiyagala	11	7	5	95
Udawalawe	6	3	1	57
Puttalam Coal I	270	197	197	4,910
Puttalam Coal II	270	270	268	6,437
Puttalam Coal III	270	245	247	5,938
KPS Small GTs	64	32	0	0
KPS GT 7	115	115	111	723
KCCP	161	158	148	3,526
Sapugaskanda A	70	32	32	656
Sapugaskanda B	70	63	63	1,296
Uthura Janani	26	24	23	412
Barge CEB	60	60	58	1,251
CEB-Hambantota	30	17	17	223
CEB-Mathugama	20	11	11	136
ACE Matara	24	0	0	0
Asia Power	50	0	0	0
KCCPS -2	163	0	0	0
West Coast	270	270	278	4,517
Nothern Power	36	0	0	0
ACE Embilipitiya	93	0	0	0
Total	3,483	2,823	2,294	43,432

Plant availability is the availability recorded at 6 am on

May 26, 2023

Contribution to the Night Peak in MW

May 25, 2023

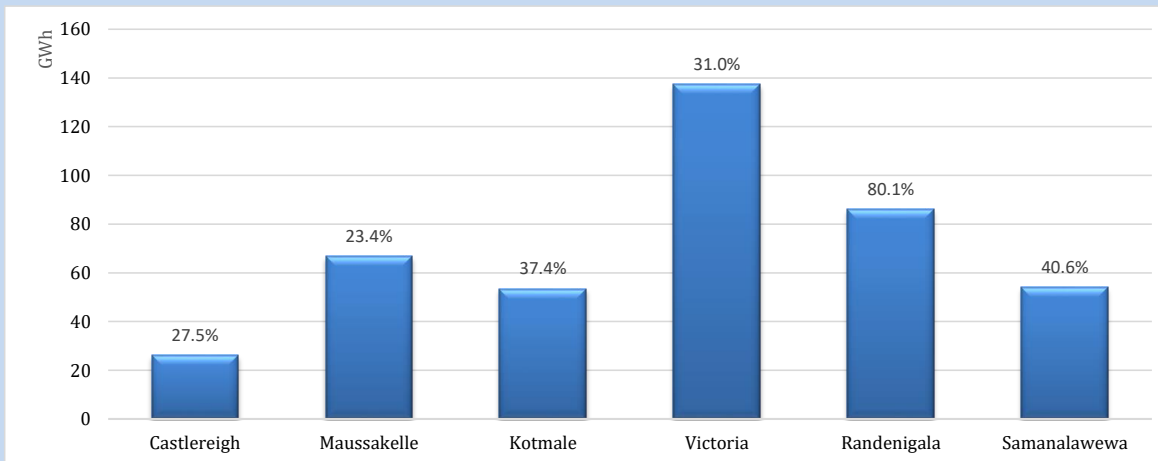


Night Peak*	2,312 MW
Day Peak Maximum Demand	2,034 MW
Day Peak Minimum Demand	1,748 MW
Off Peak Minimum Demand	1,337 MW

Above figures are excluding contribution from roof top solar, non telemetered solar and mini hydro plants

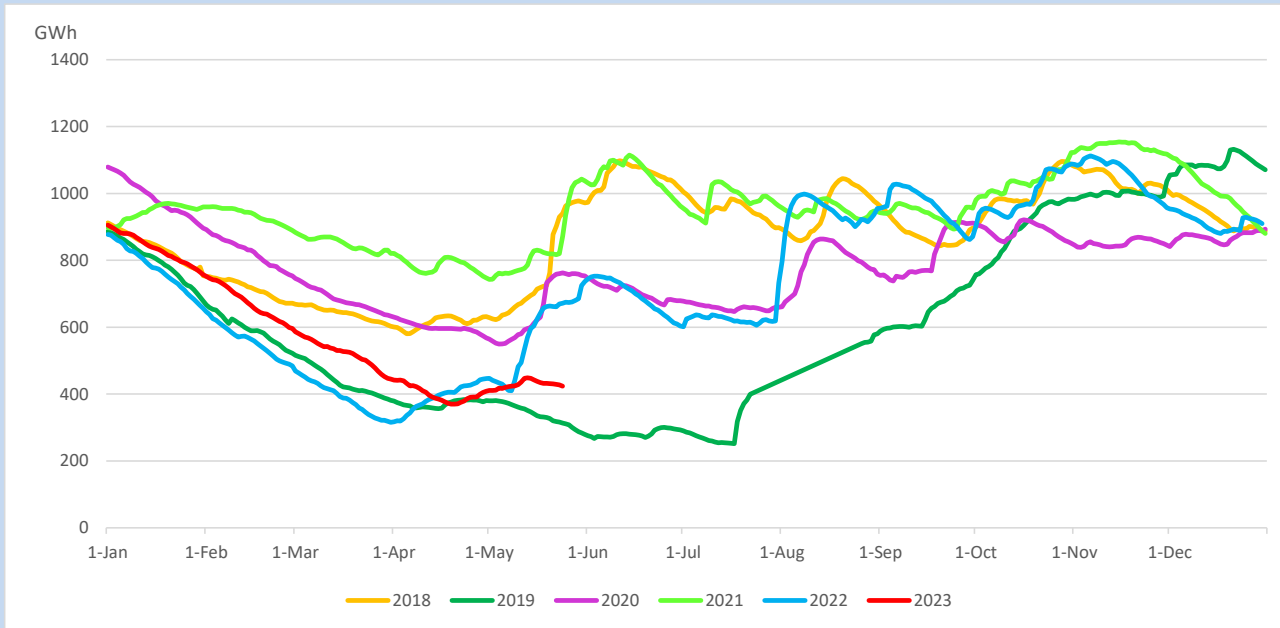
Reservoir Levels -

as at 06.00 Hr on May 26, 2023

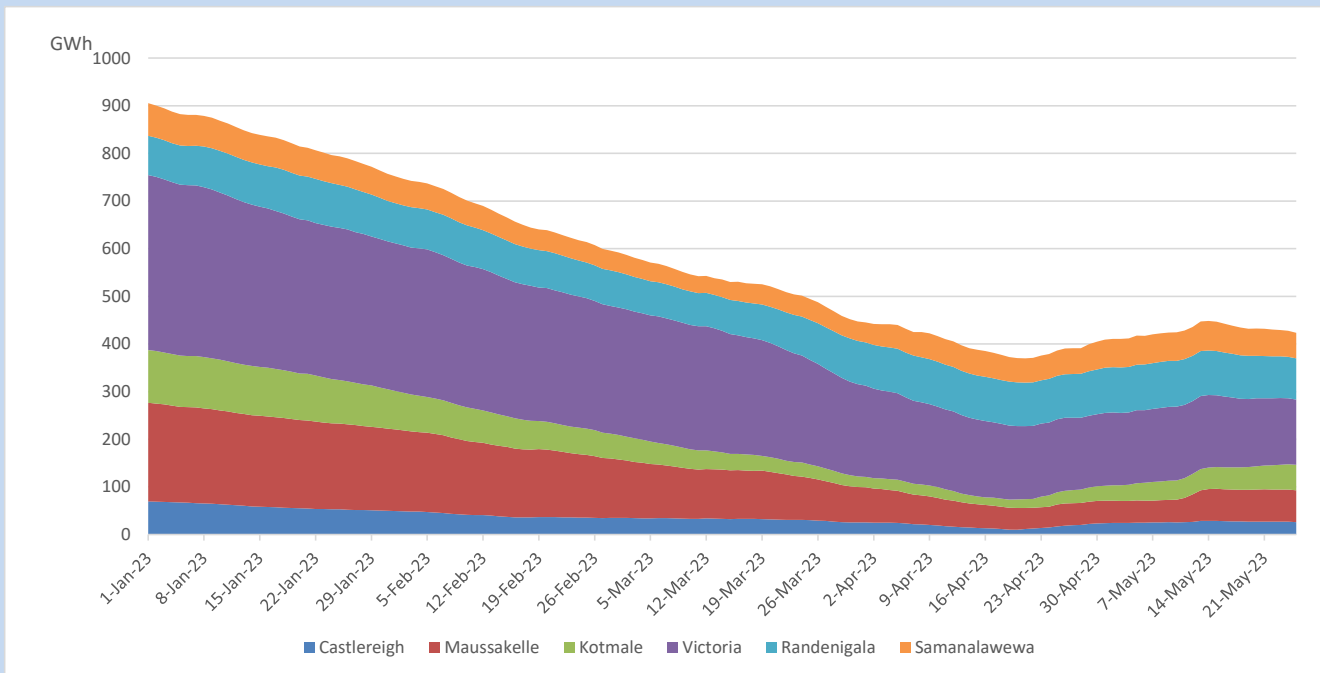


Total Reservoir Level	423.6 GWh
% of Total capacity	35.1%

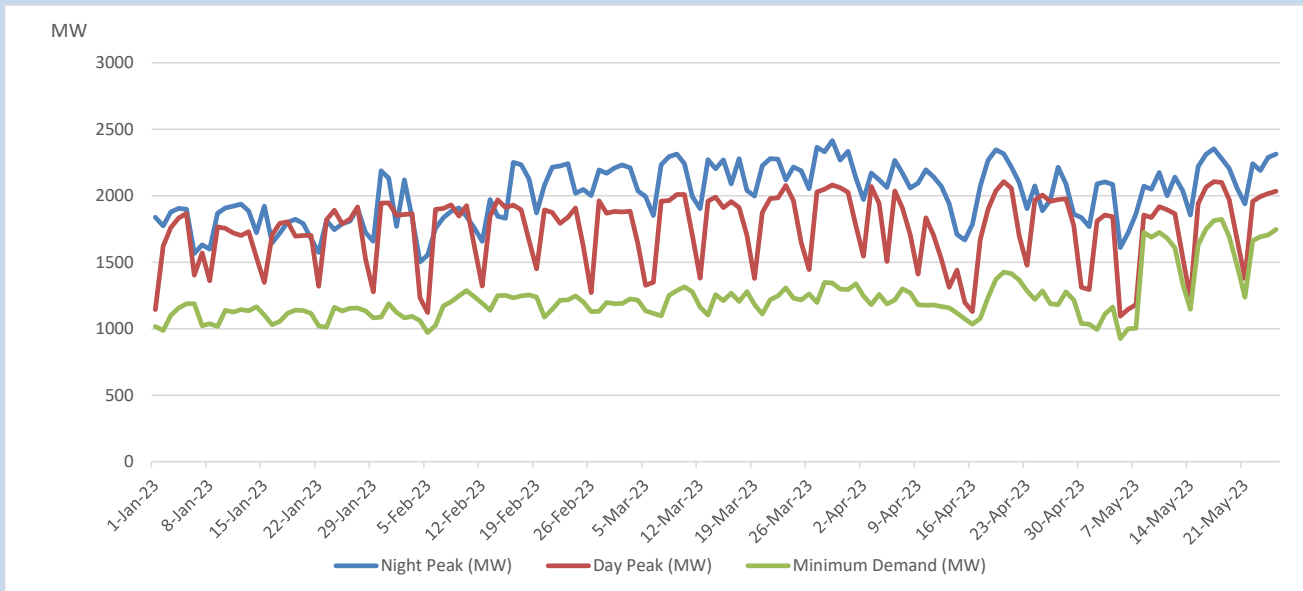
Comparison of Total Reservoir Storage Levels with Past Years



Variation of Major Hydro Reservoir Levels in the current year (GWh)



Variation of Demand during the current year

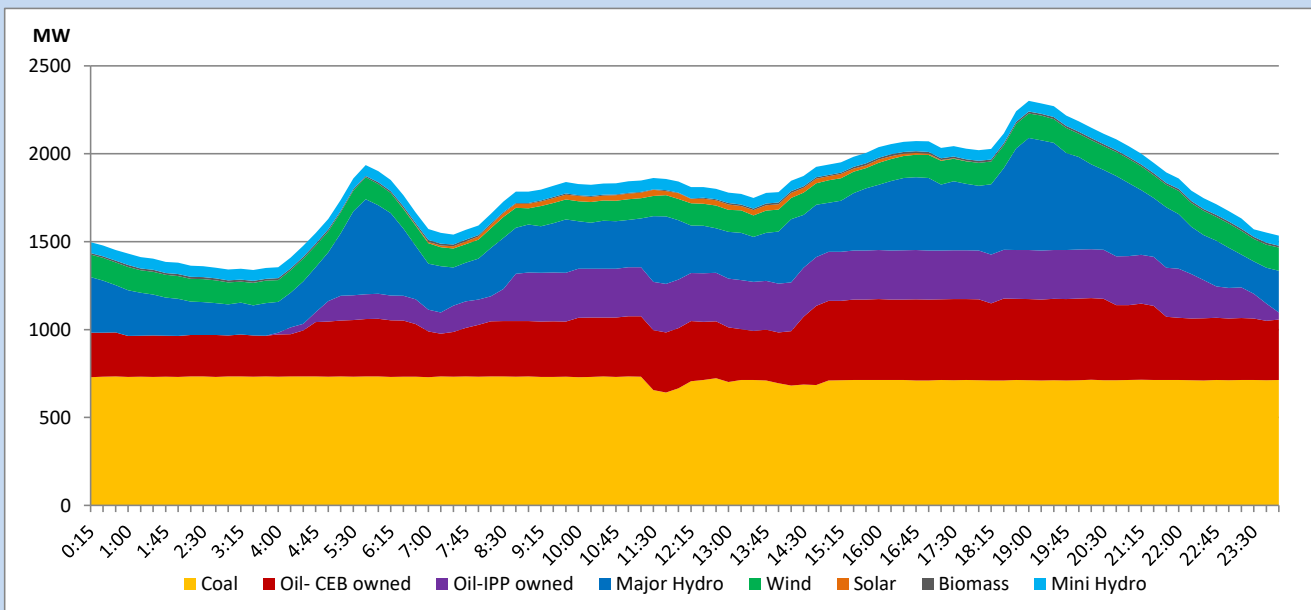


The above figures are excluding contribution from roof top solar, non telemetered solar and mini hydro plants

Daily Load Curve

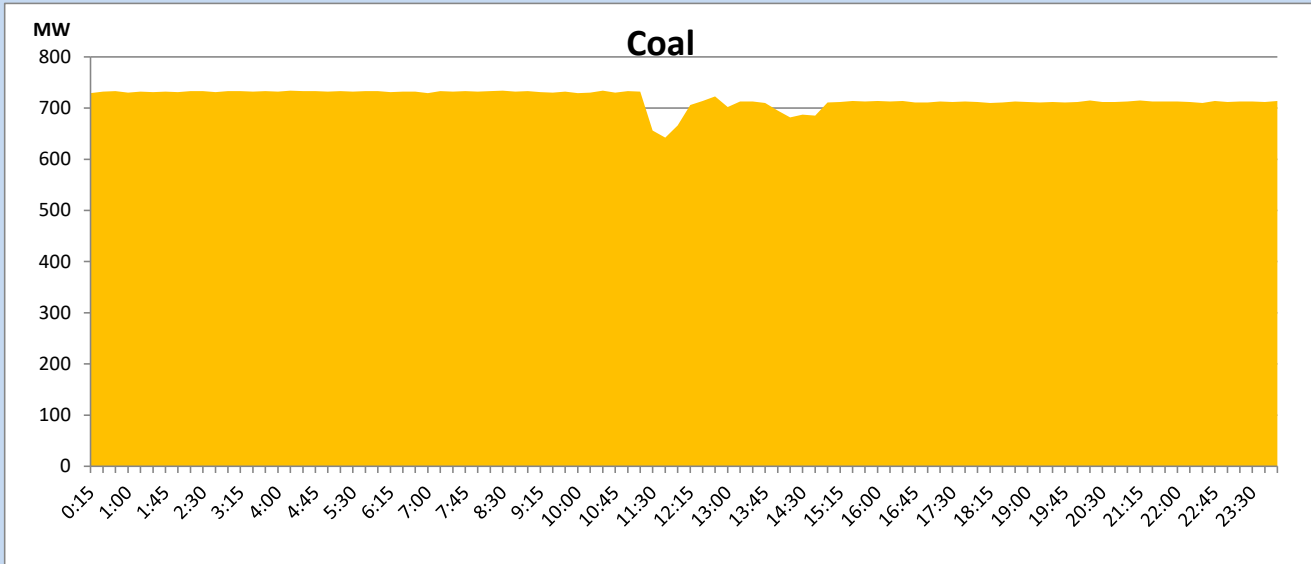
May 25, 2023

Solar and wind data is based on Telemetered Power Stations only



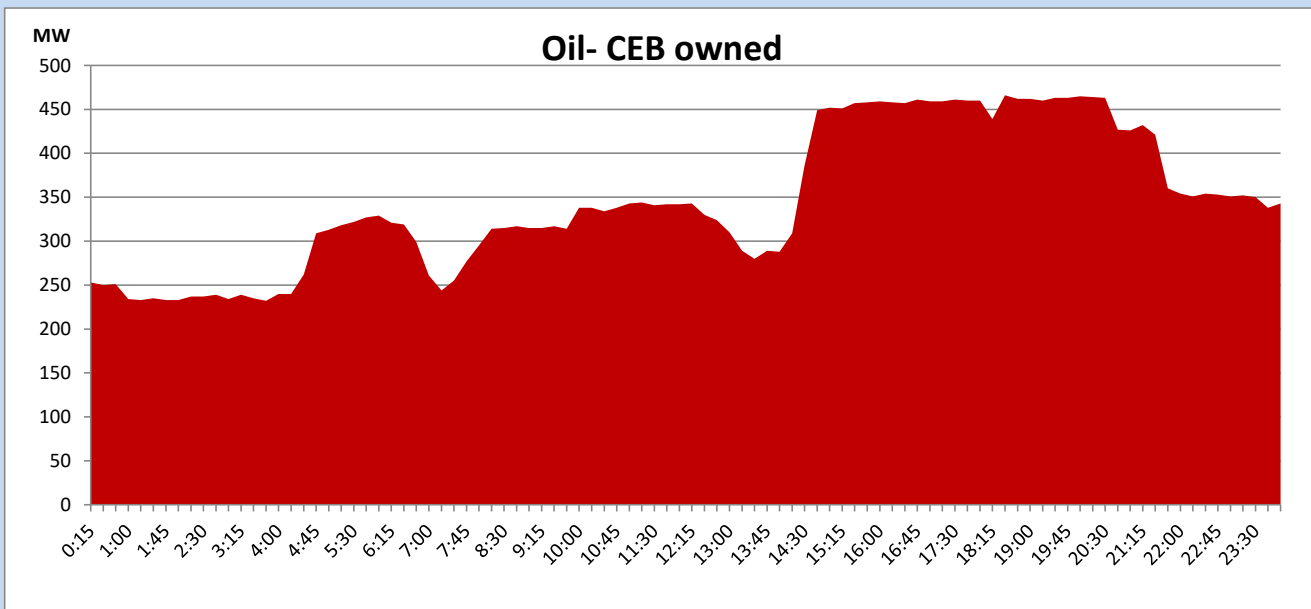
Coal Generation during

May 25, 2023



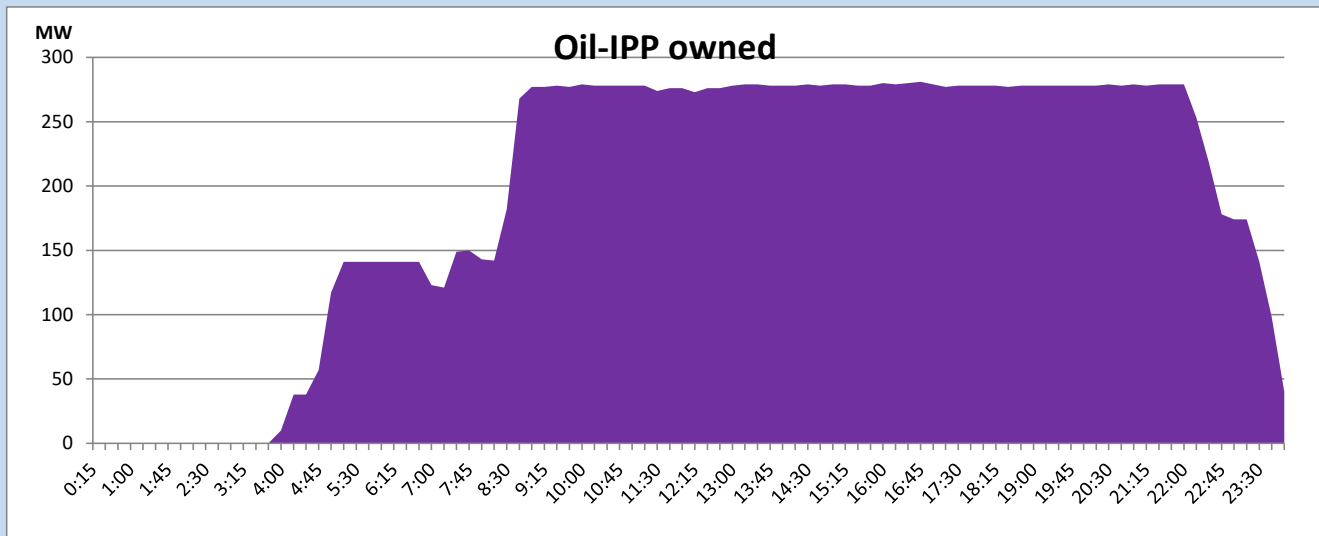
CEB Oil Plant Generation during

May 25, 2023



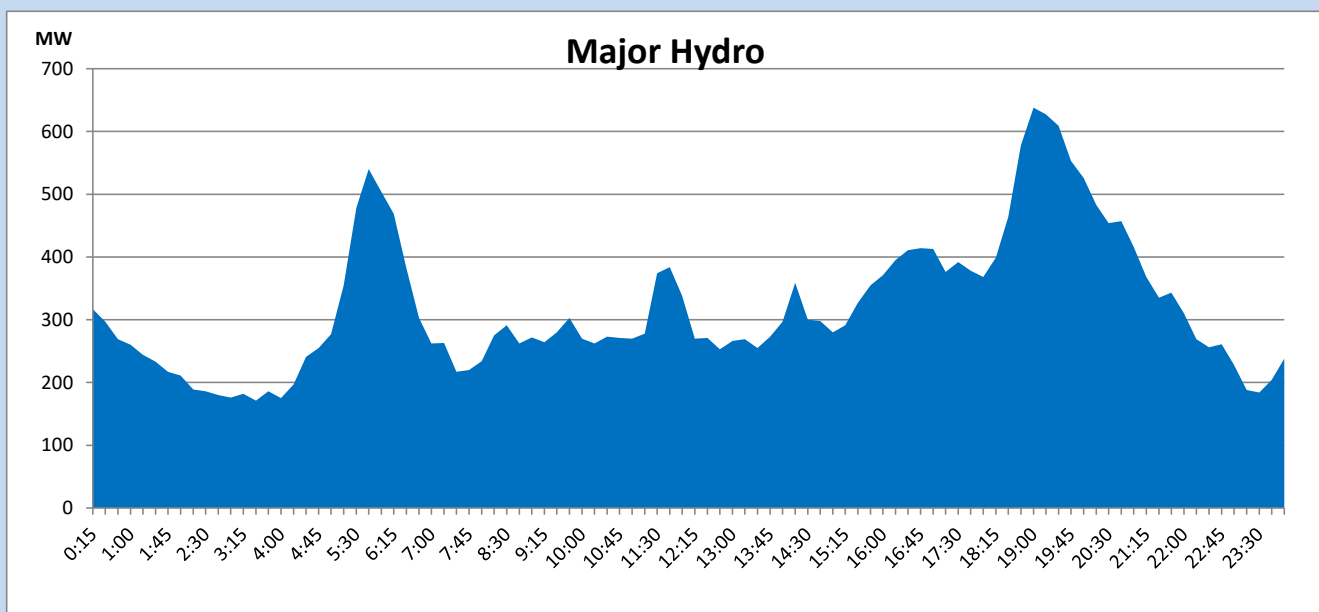
IPP Oil Plant Generation during

May 25, 2023



Major Hydro Generation during

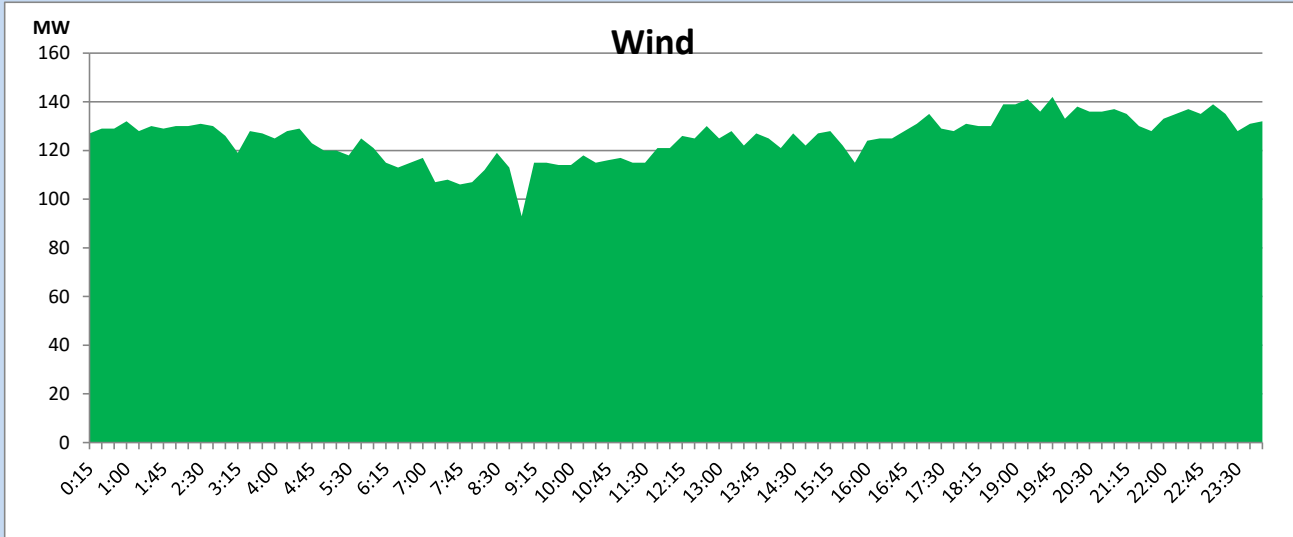
May 25, 2023



Wind Generation during

May 25, 2023

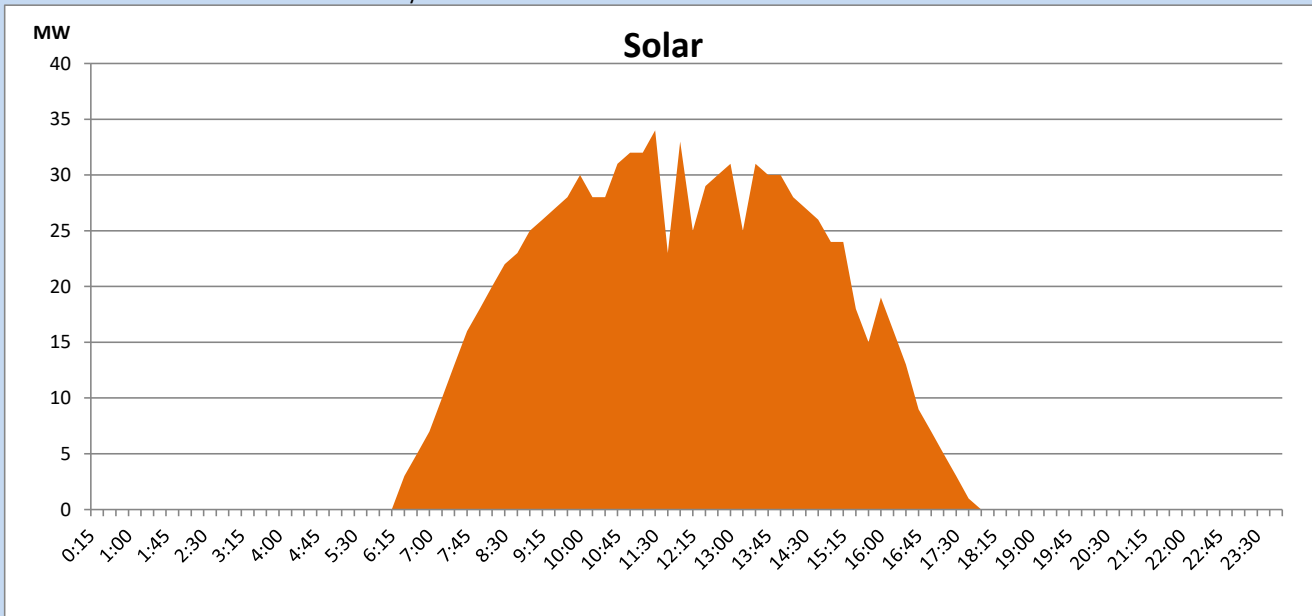
Based on Telemetered Power Stations only



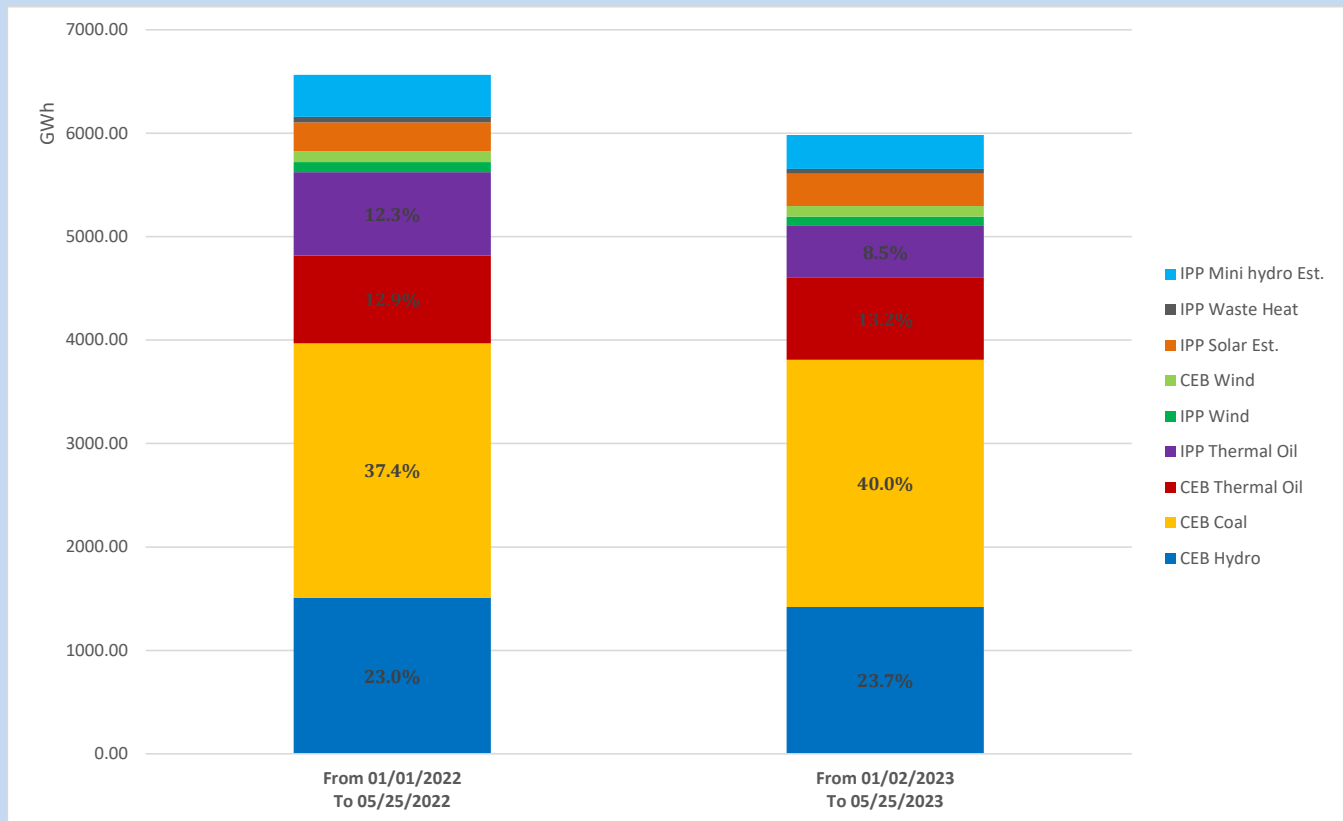
Solar Generation during

May 25, 2023

Based on Telemetered Power Stations only



Cumulative Dispatch Comparison with Last Year



The above figures are including contribution from roof top solar, non telemetered solar and mini hydro plants

Thermal Plant Fuel types

Power Station	Primary Fuel
CEB Thermal	
Sapugaskanda 1	Heavy Fuel
Sapugaskanda 2	Heavy Fuel
Kelanitissa Small Gas Turbines	Auto Diesel
GT 7 - Kelanitissa	Auto Diesel
Kelanitissa CCY	Naphtha or Diesel
Lakvijaya 1	Coal
Lakvijaya 2	Coal
Lakvijaya 3	Coal
Uthuru Janani	Heavy Fuel
Barge CEB	Heavy Fuel
KCCPS -2	Auto Diesel

Power Station	Primary Fuel
Private Thermal	
West Coast	Auto Diesel / Heavy Fuel

Major Incidents reported during the day

May 25, 2023

1) LVPS unit 01 performed a run-back to 128MW (net) at 11:20hrs due to a tripping of ID fan and the unit reached 197MW (net) at 14:00hrs. The availability of LVPS unit 01 is limited to 197MW (net) due to a CW pump failure.