

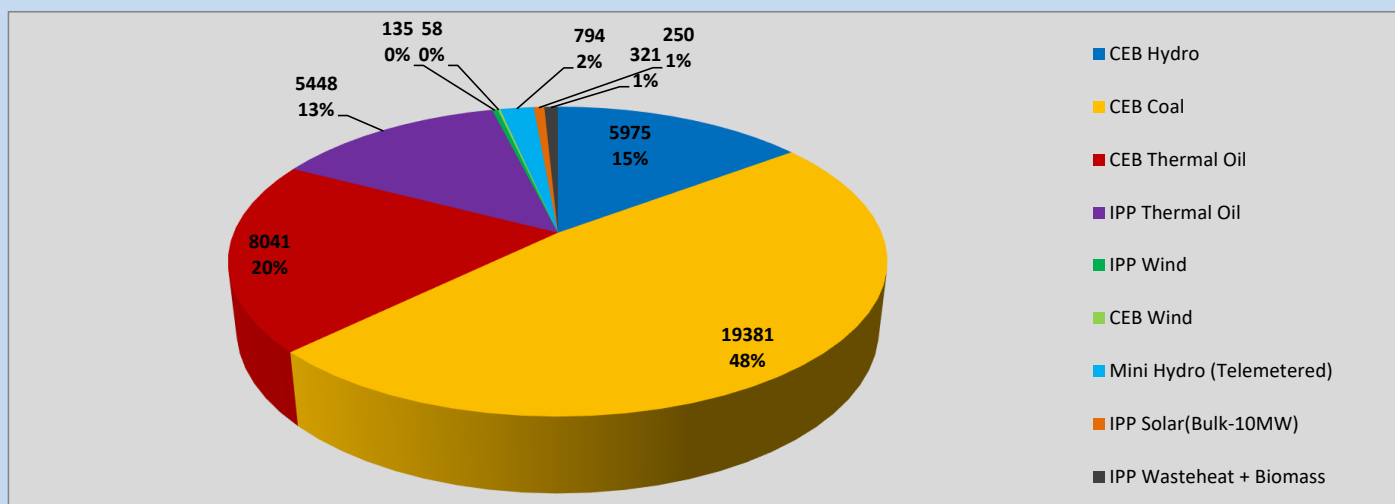
Generation and Reservoirs Statistics

April 25, 2023



PUBLIC UTILITIES COMMISSION OF SRI LANKA

Daily Generation Mix in MWh



Total Generation (Excluding estimated figures) =

40,403 MWh

Estimated figures of CEB generation report

Estimated unserved energy = 0.00 GWh

Estimated Mini Hydro (Non telemetered) = 1586 MWh

Estimated IPP Solar PV (Bulk 1-10MW) = 304 MWh

Estimated Solar Roof Top PV = 1640 MWh

Cumulative Dispatch

Following data excludes the contribution from roof top solar, non telemetered solar and mini hydro plants

For Current Month

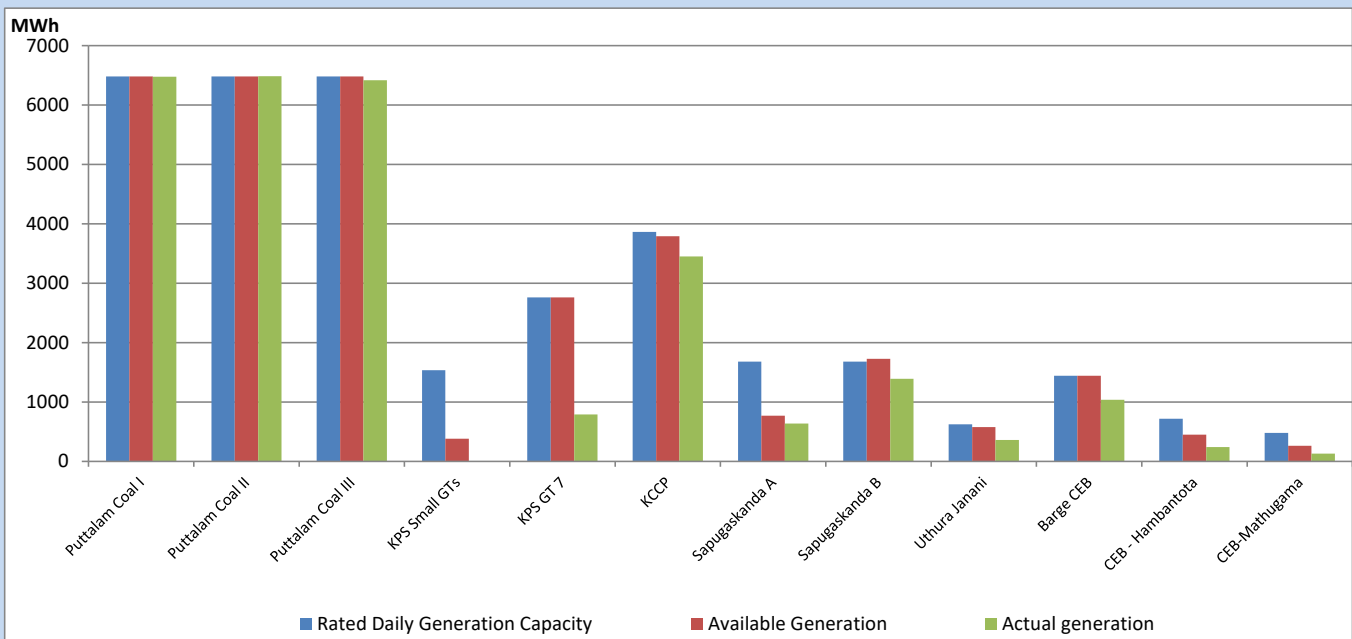
Category	Dispatch (GWh)	
CEB Hydro	249	26.29%
CEB Coal	369	38.86%
CEB Thermal Oil	151	15.87%
IPP Thermal	128	13.47%
SPP Wind	6	0.67%
CEB Wind	9	0.95%
Mini Hydro (Telemetered)	22	2.29%
IPP Solar (Bulk-10MW)	8	0.82%
IPP Wasteheat + BMP	7	0.77%
Total	949	

For Current Year

Category	Dispatch (GWh)	
CEB Hydro	1,171	26.82%
CEB Coal	1,891	43.33%
CEB Thermal Oil	621	14.22%
IPP Thermal	398	9.12%
SPP Wind	57	1.31%
CEB Wind	69	1.59%
Mini Hydro (Telemetered)	91	2.08%
IPP Solar (Bulk-10MW)	33	0.77%
IPP Wasteheat	34	0.77%
Total	4,365	

CEB owned Thermal Plant Dispatch

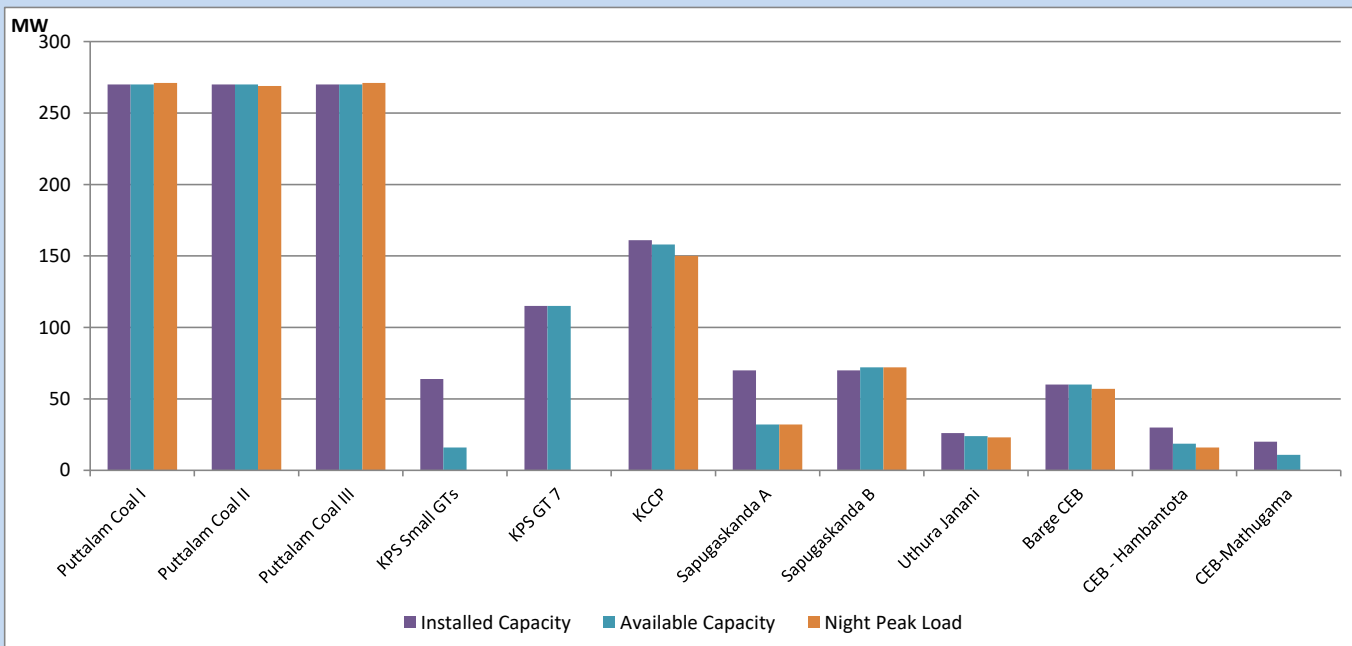
April 25, 2023



Available Generation is estimated based on plant availability at 6.00am on

April 26, 2023

CEB owned Thermal Plant Loading at the Night Peak

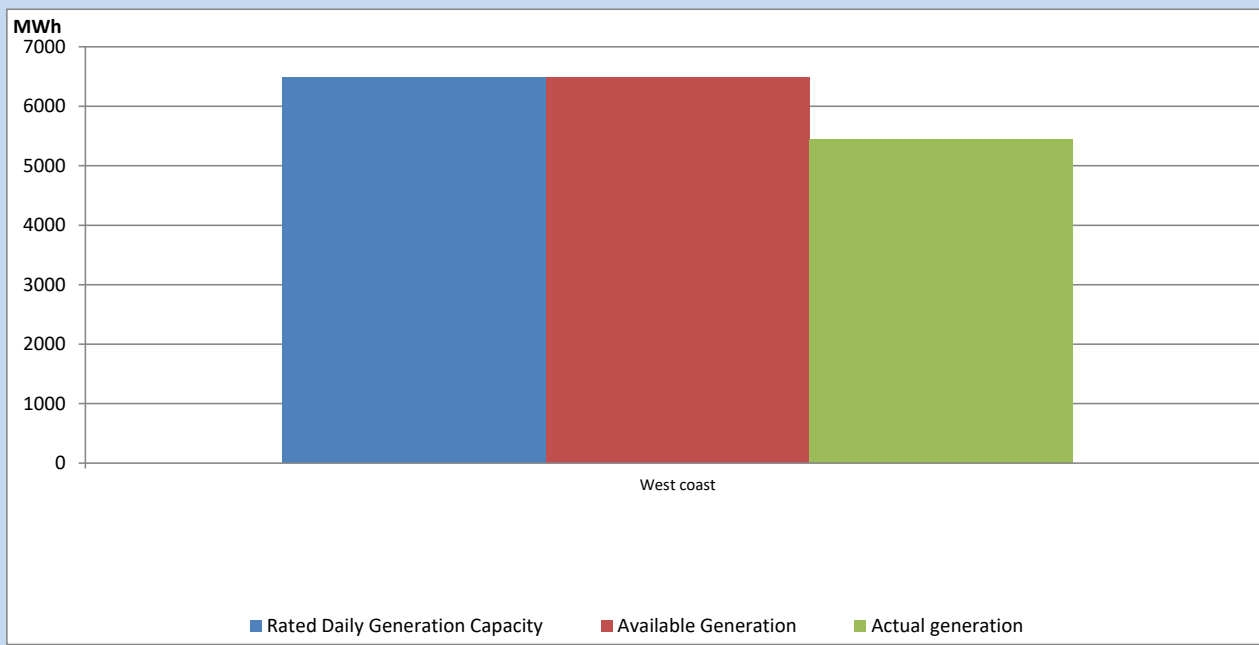


Note- Plant availability is recorded at 6.00 am on

April 26, 2023

IPP owned Thermal Plant Dispatch

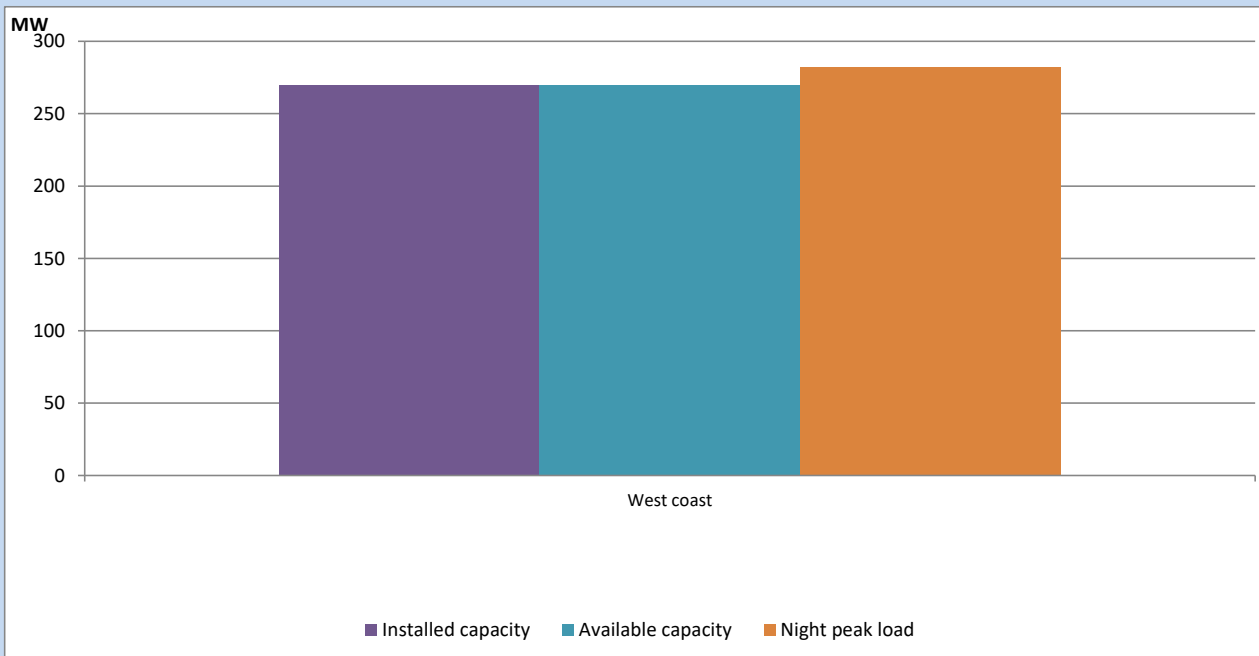
April 25, 2023



Available Generation is estimated based on plant availability at 6.00am on

April 26, 2023

IPP owned Thermal Plant Loading at the Night Peak

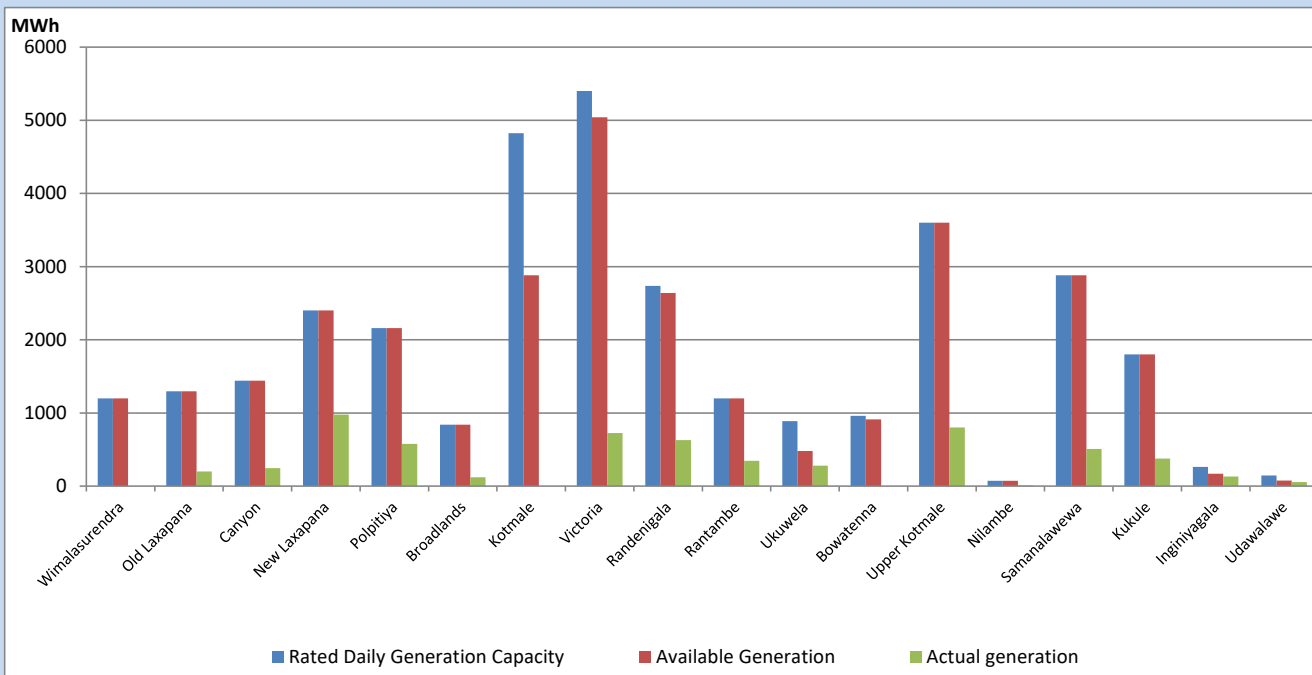


Note- Plant availability is recorded at 6.00 am on

April 26, 2023

Major Hydro Plant Dispatch

April 25, 2023

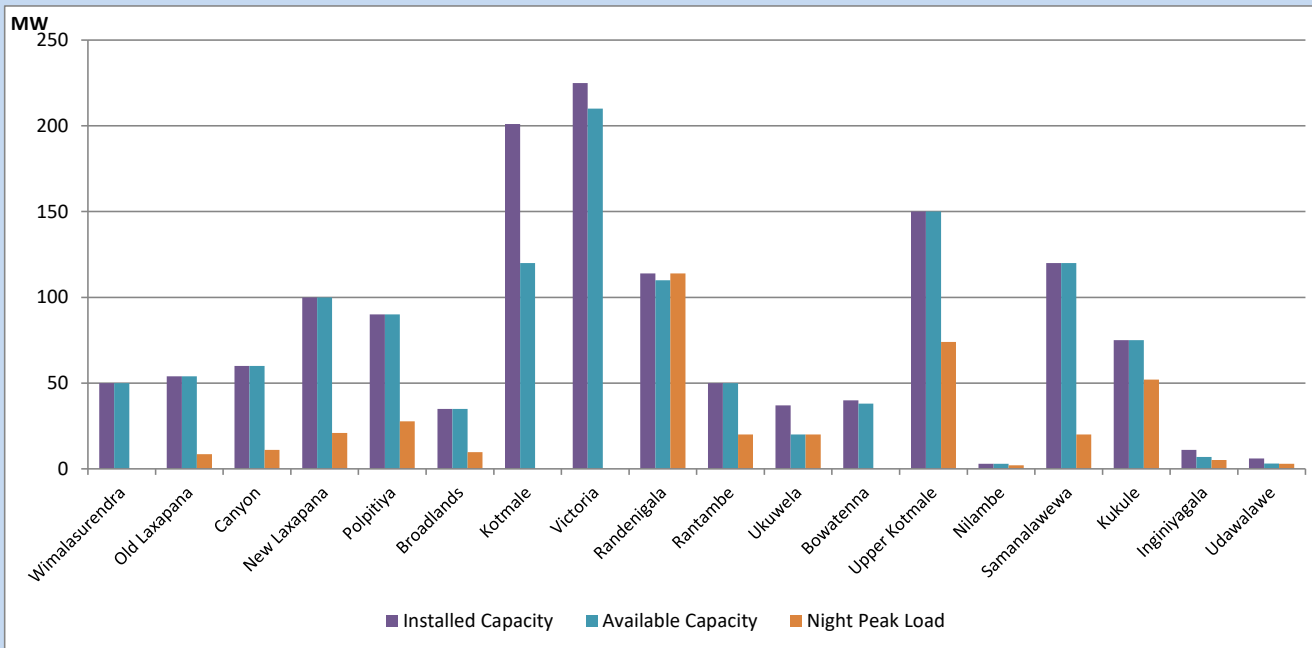


Available Generation is estimated based on plant availability at 6.00am on
Broadlands power plant is operating in the Commissioning Stage

April 26, 2023

Major Hydro Plant Loading at Night Peak

April 25, 2023



Note- Plant availability is recorded at 6.00 am on
Broadlands power plant is operating in the Commissioning Stage

April 26, 2023

Summary of Major Plant performance

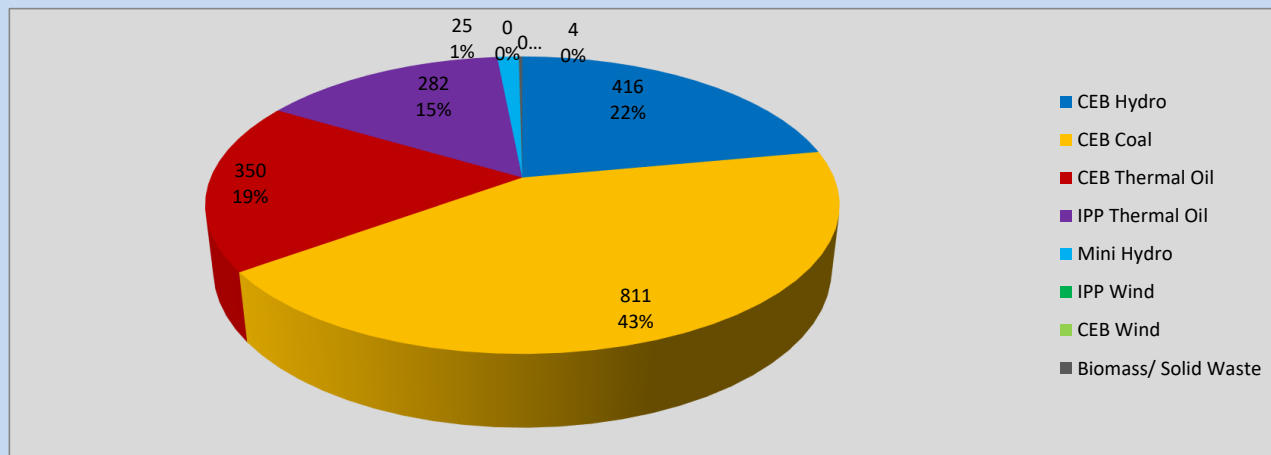
Plant	Installed Capacity	Plant Availability	Night peak Load	Plant Dispatch
	(MW)	(MW)	(MW)	(MWh)
Wimalasurendra	50	50	0	0
Old Laxapana	54	54	9	199
Canyon	60	60	11	244
New Laxapana	100	100	21	978
Polpitiya	90	90	28	578
Broadlands	35	35	10	121
Kotmale	201	120	0	0
Victoria	225	210	0	725
Randenigala	114	110	114	628
Rantambe	50	50	20	344
Ukuwela	37	20	20	280
Bowatenna	40	38	0	0
Upper Kotmale	150	150	74	800
Nilambe	3	3	2	11
Samanalawewa	120	120	20	507
Kukule	75	75	52	376
Inginiyagala	11	7	5	130
Udawalawe	6	3	3	54
Puttalam Coal I	270	270	271	6,479
Puttalam Coal II	270	270	269	6,484
Puttalam Coal III	270	270	271	6,418
KPS Small GTs	64	16	0	0
KPS GT 7	115	115	0	790
KCCP	161	158	150	3,451
Sapugaskanda A	70	32	32	637
Sapugaskanda B	70	72	72	1,392
Uthura Janani	26	24	23	359
Barge CEB	60	60	57	1,039
CEB-Hambantota	30	19	16	243
CEB-Mathugama	20	11	0	130
ACE Matara	24	0	0	0
Asia Power	50	0	0	0
Sojitz Kelanitissa	163	0	0	0
West Coast	270	270	282	5,448
Nothern Power	36	0	0	0
ACE Embilipitiya	93	0	0	0
Total	3,483	2,882	1,860	40,403

Plant availability is the availability recorded at 6 am on

April 26, 2023

Contribution to the Night Peak in MW

April 25, 2023

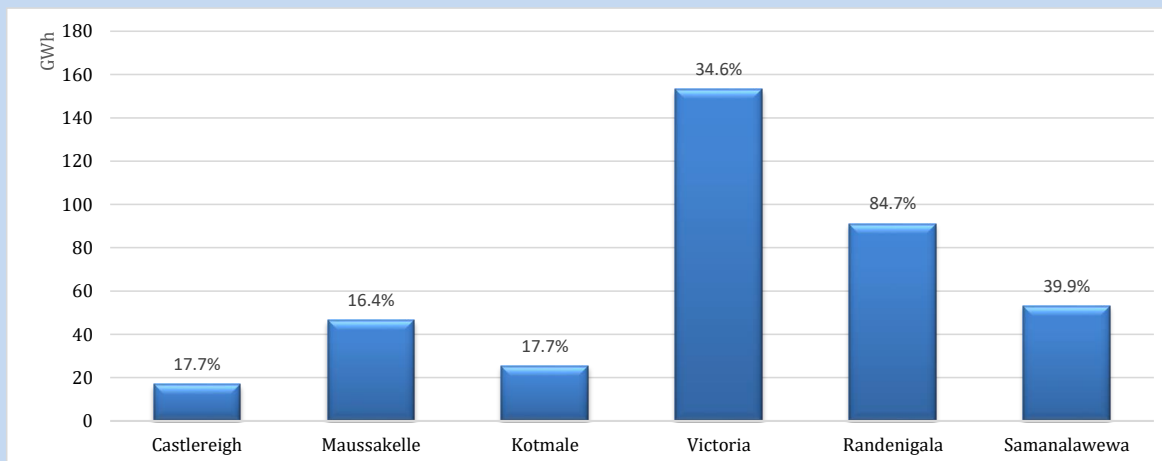


Night Peak*	1,888 MW
Day Peak	2,006 MW
Minimum Demand	1,284 MW

Above figures are excluding contribution from roof top solar, non telemetered solar and mini hydro plants

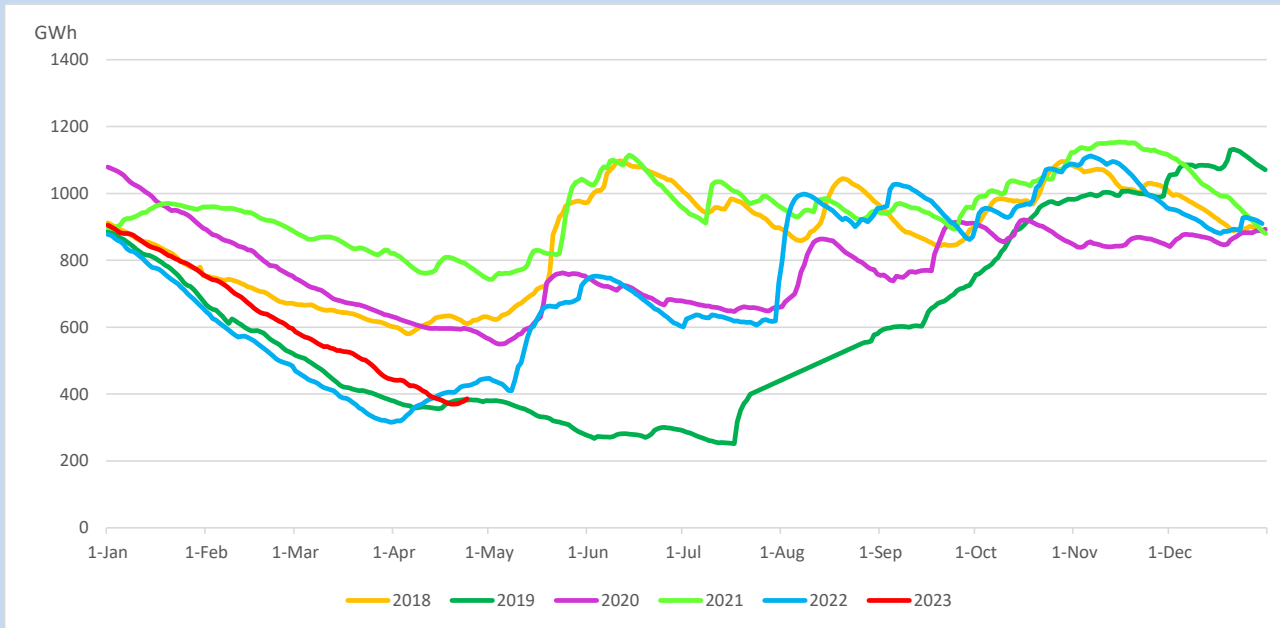
Reservoir Levels -

as at 06.00 Hr on April 26, 2023

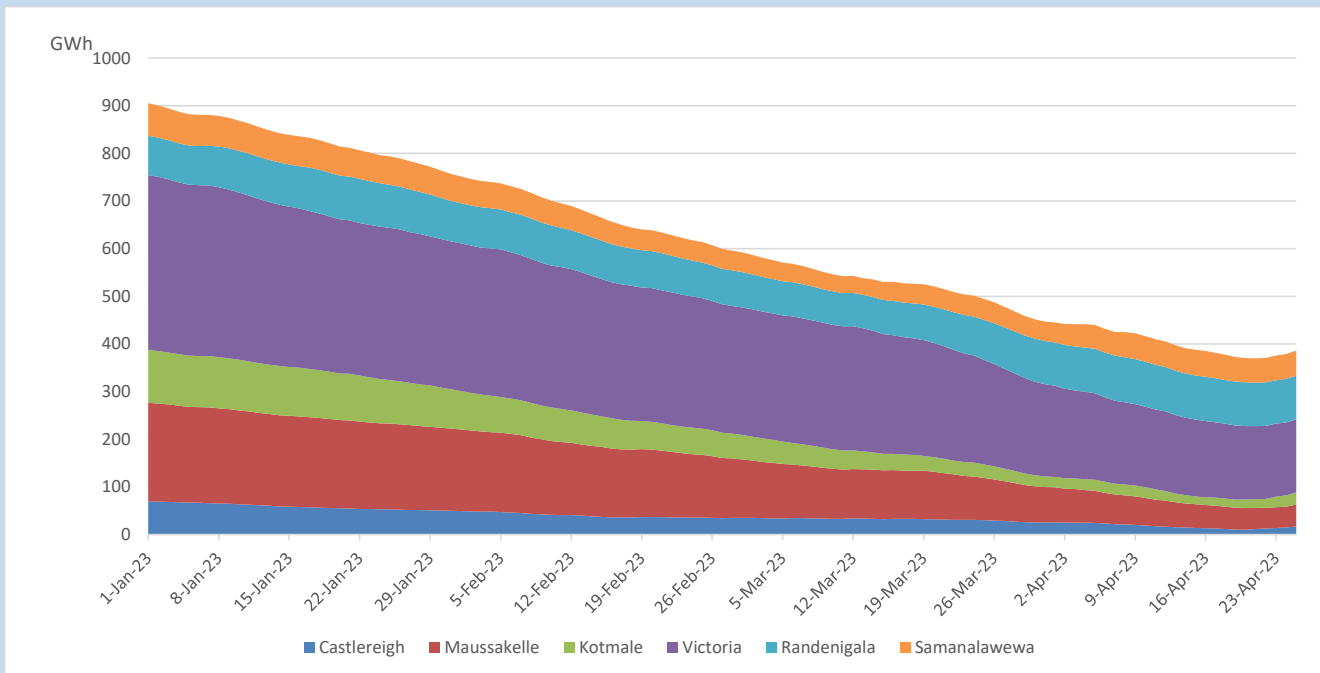


Total Reservoir Level	386 GWh
% of Total capacity	32.0%

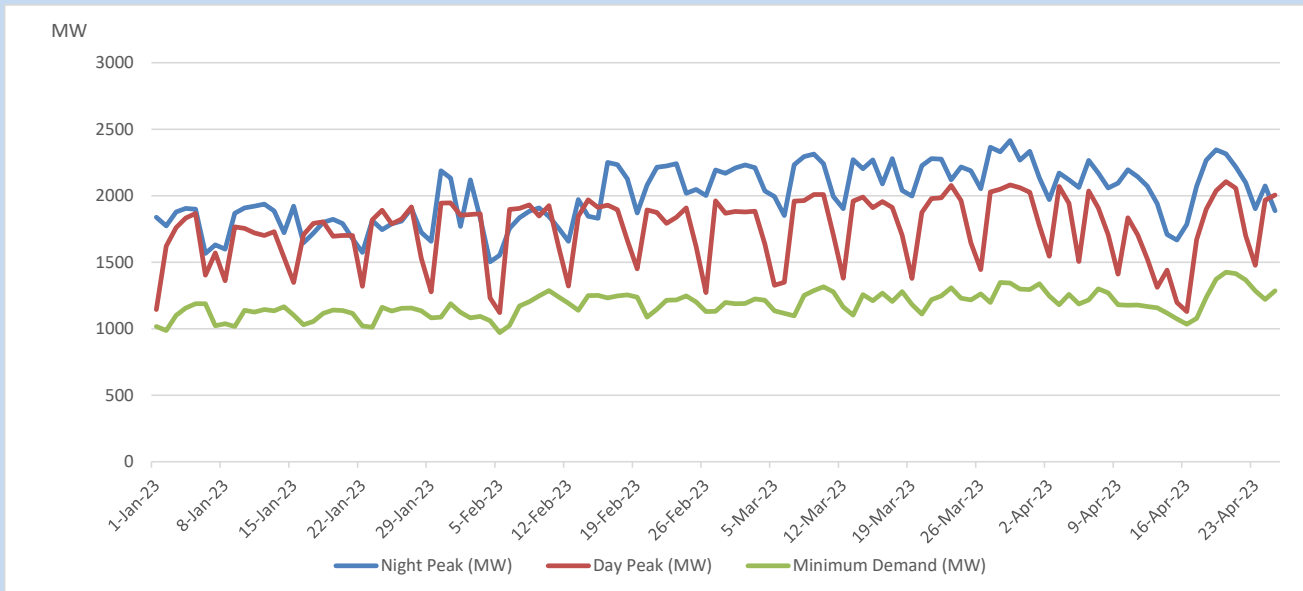
Comparison of Total Reservoir Storage Levels with Past Years



Variation of Major Hydro Reservoir Levels in the current year (GWh)



Variation of Demand during the current year

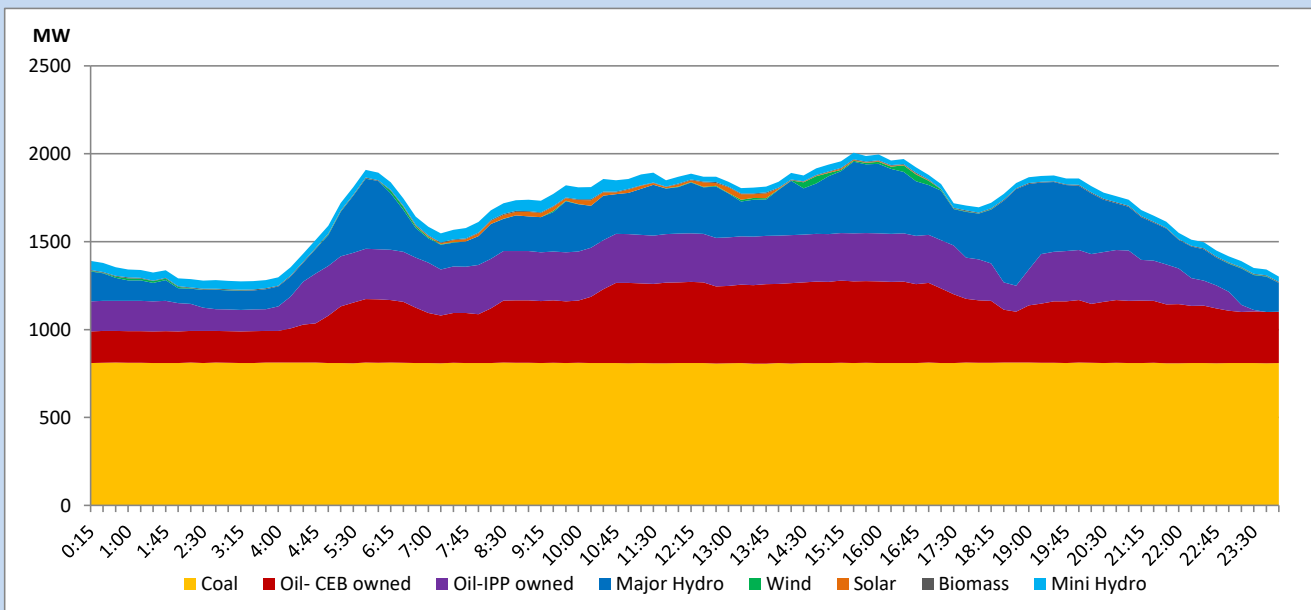


The above figures are excluding contribution from roof top solar, non telemetered solar and mini hydro plants

Daily Load Curve

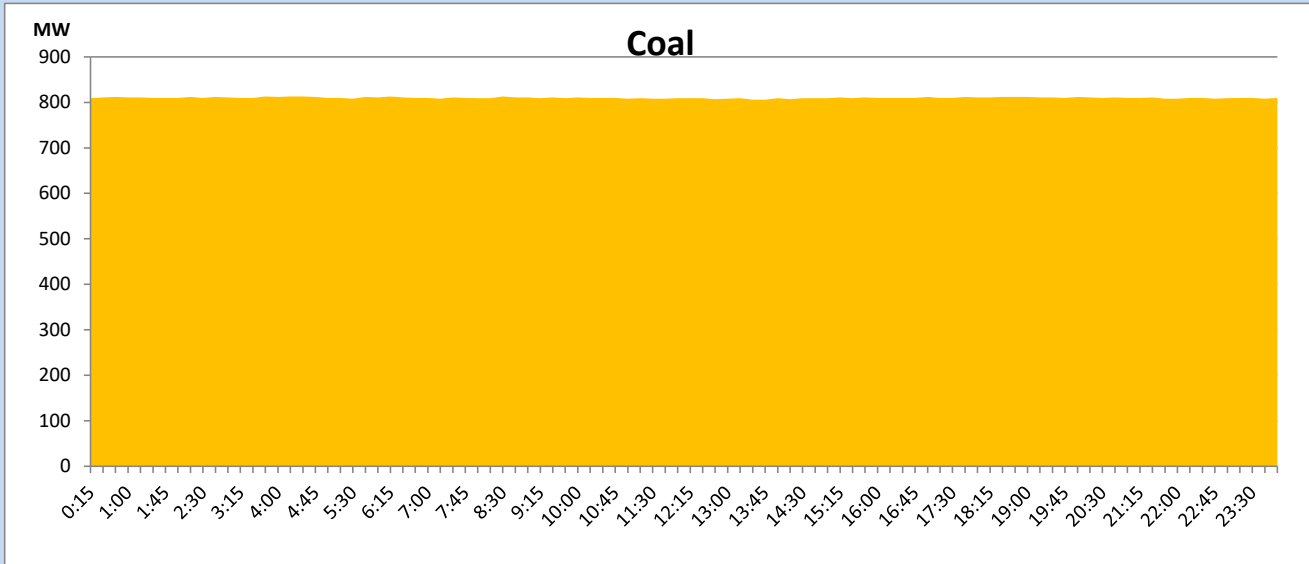
April 25, 2023

Solar and wind data is based on Telemetered Power Stations only



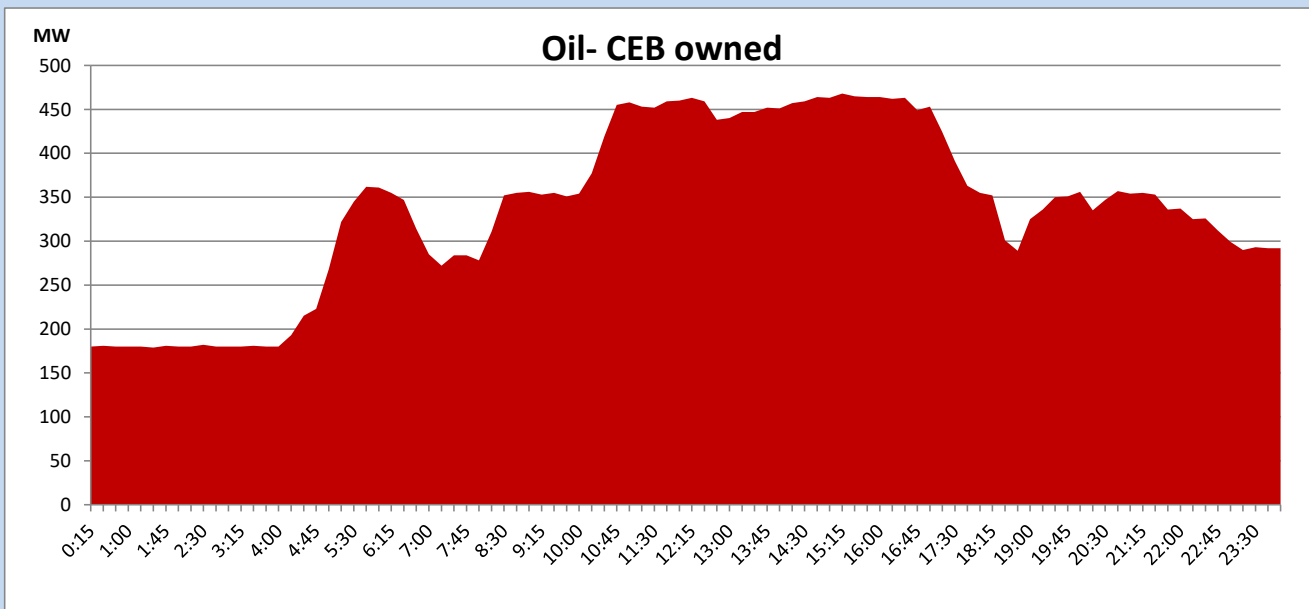
Coal Generation during

April 25, 2023



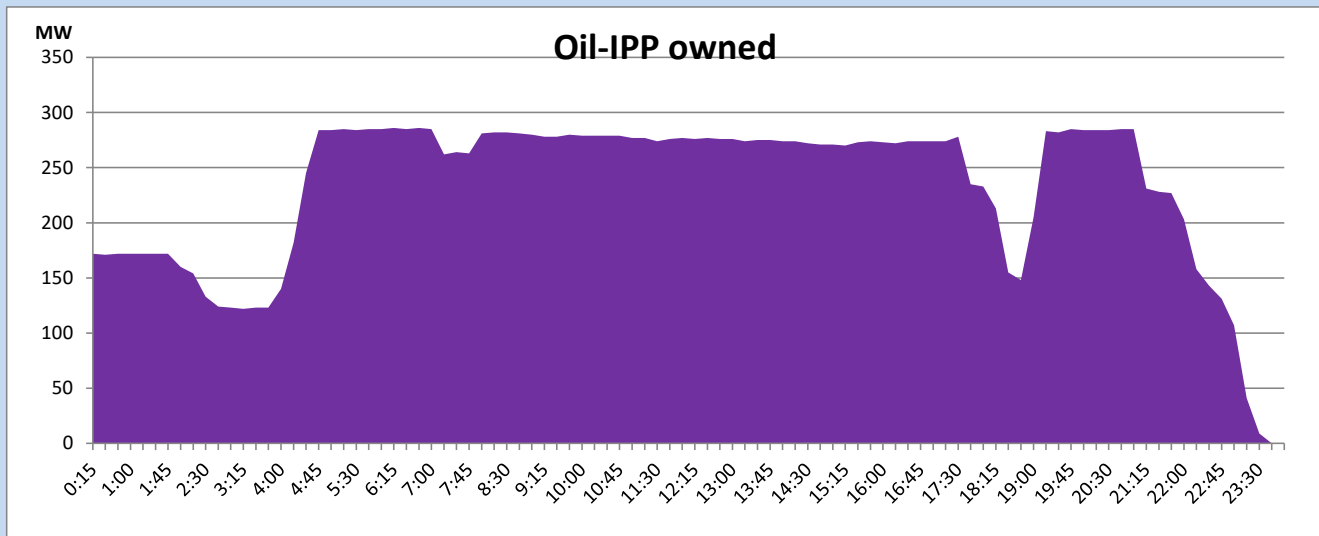
CEB Oil Plant Generation during

April 25, 2023



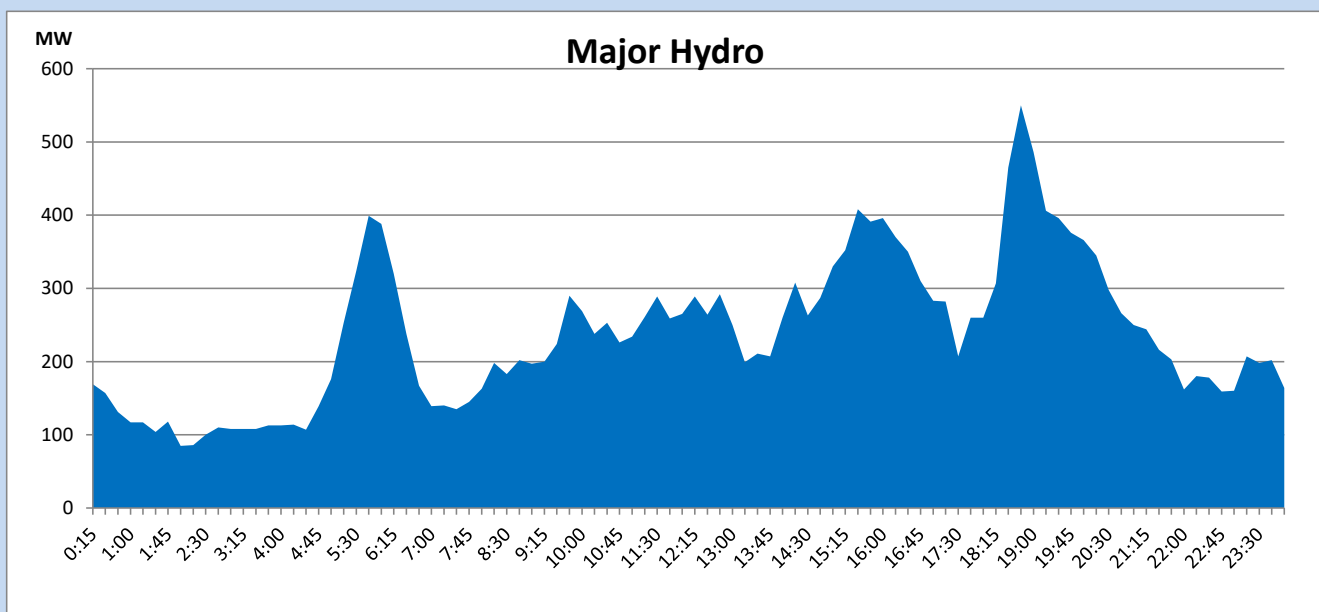
IPP Oil Plant Generation during

April 25, 2023



Major Hydro Generation during

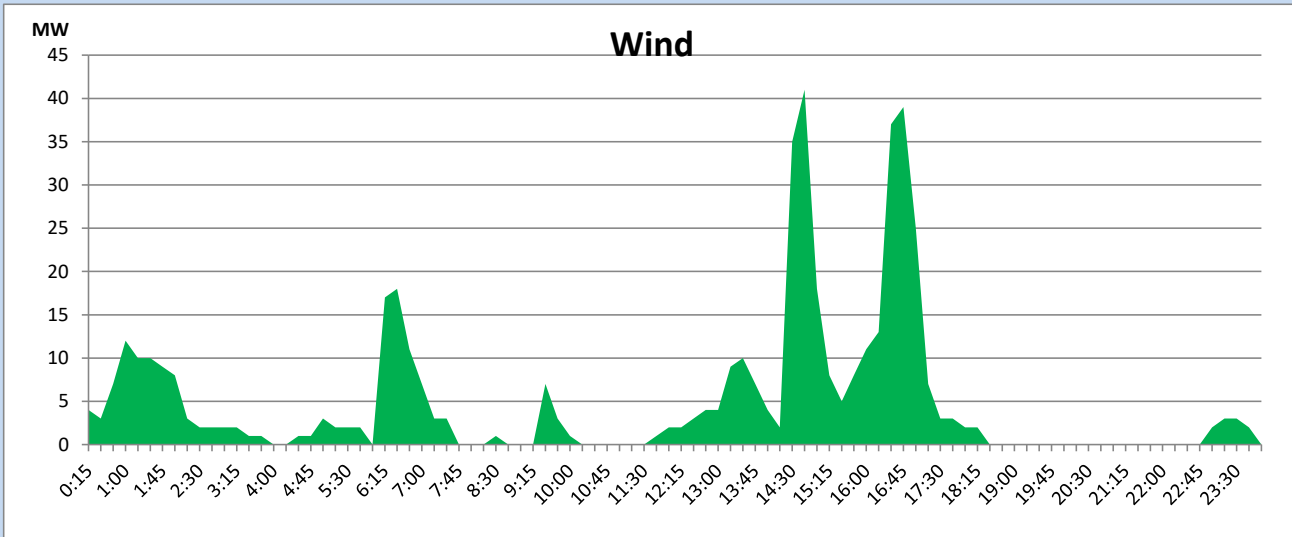
April 25, 2023



Wind Generation during

April 25, 2023

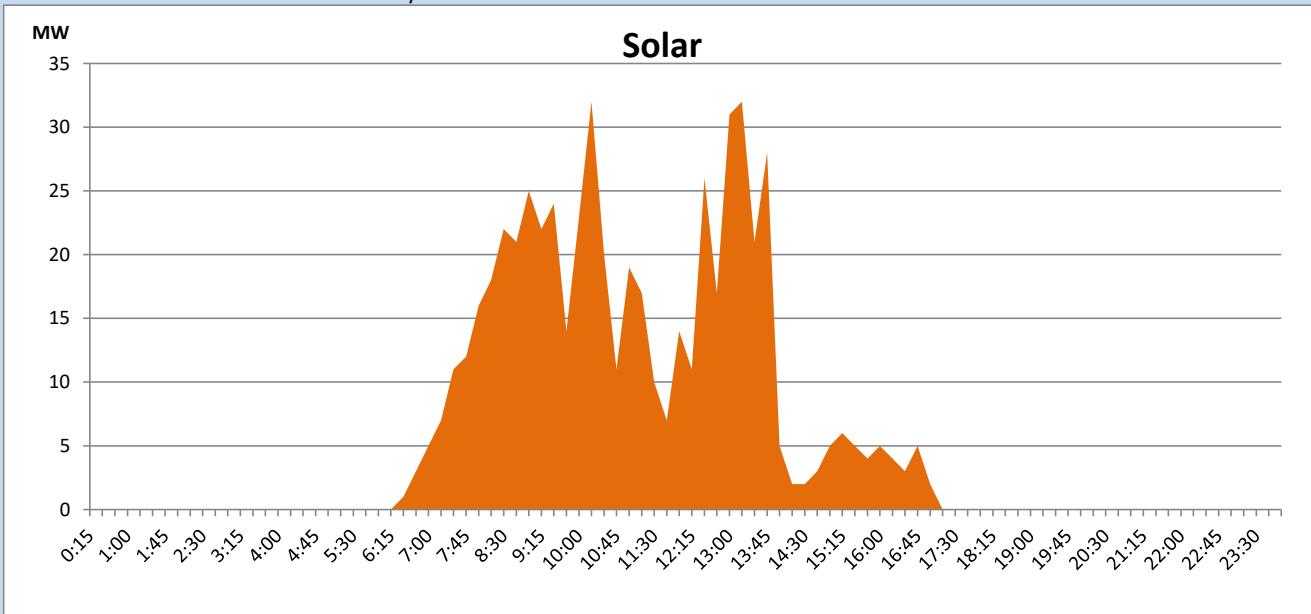
Based on Telemetered Power Stations only



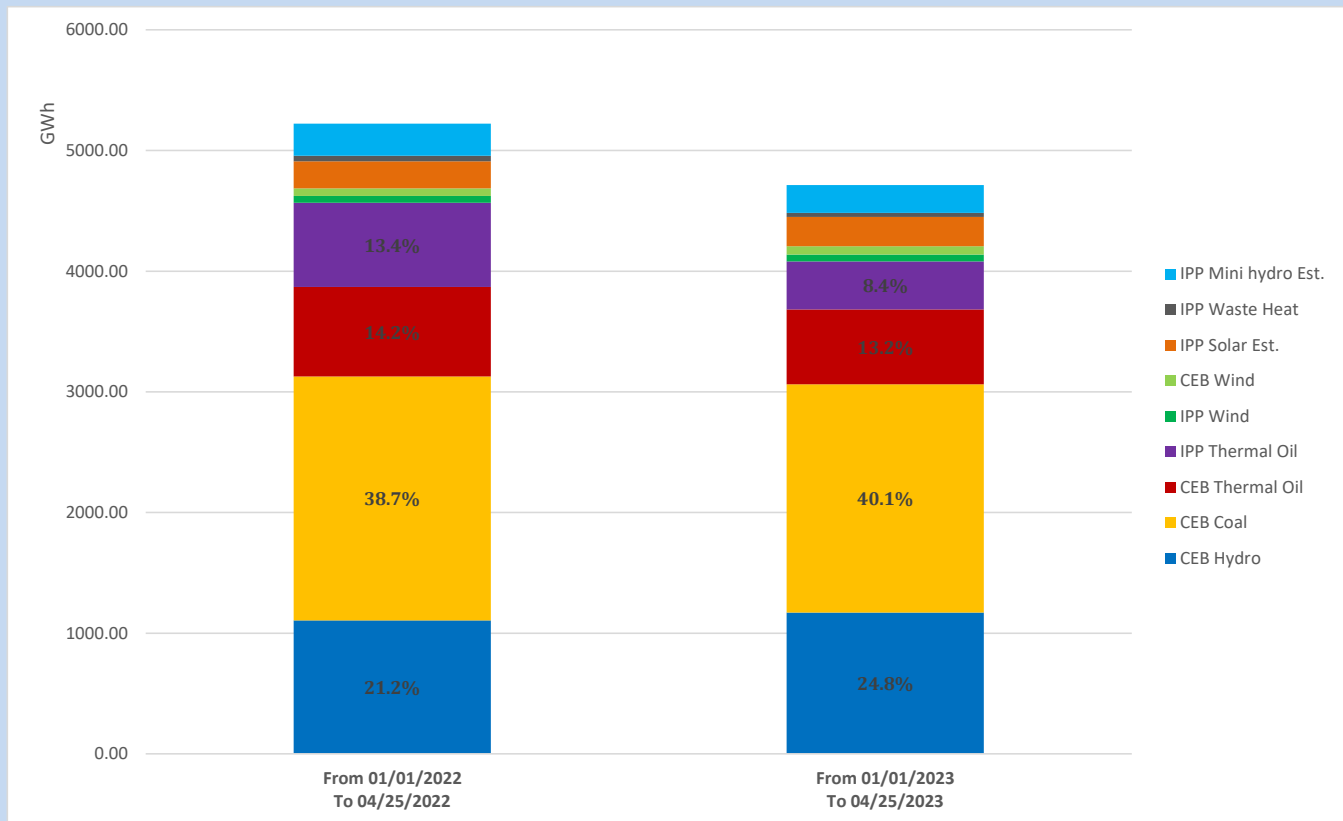
Solar Generation during

April 25, 2023

Based on Telemetered Power Stations only



Cumulative Dispatch Comparison with Last Year



The above figures are including contribution from roof top solar, non telemetered solar and mini hydro plants

Thermal Plant Fuel types

Power Station	Primary Fuel
CEB Thermal	
Sapugaskanda 1	Heavy Fuel
Sapugaskanda 2	Heavy Fuel
Kelanitissa Small Gas Turbines	Auto Diesel
GT 7 - Kelanitissa	Auto Diesel
Kelanitissa CCY	Naphtha or Diesel
Lakvijaya 1	Coal
Lakvijaya 2	Coal
Lakvijaya 3	Coal
Uthuru Janani	Heavy Fuel
Barge CEB	Heavy Fuel

Power Station	Primary Fuel
Private Thermal	
West Coast	Auto Diesel / Heavy Fuel

Major Incidents reported during the day

April 25, 2023

- 1) Ukuwela unit 01 resumed generation at 10:15hrs.
- 2) N' Anu – Puttalam 132kV cct 1 & 2 tripped from both ends at 15:15hrs due to the operation of differential & distance protection causing Anuradhapura 132kV GSS to be dead. Anuradhapura 132kV GSS was energized at 15:22hrs via N'Anu132KV B/C and all affected feeders were restored at 15:23hrs. New Anuradhapura – Puttalam 132kV cct 1 & 2 normalized at 15:39hrs.
- 3) Athuru - Polpitiya 132kV cct tripped from Polpitiya end and tripped and A/R from Athurugiriya end, due to the operation of distance protection at 16:34hrs. At the same time, Athuru-New Polpitiya 132kV cct tripped and A/R from Athurugiriya end due to the operation of distance protection. The Athuru – Polpitiya cct was normalized at 16:44hrs.
- 4) Biyagama – Sapugaskanda PS 132kV cct 01 tripped from both ends at 18:18hrs due to the operation of differential protection. The Biyagama – Sapugaskanda PS 132kV cct 01 normalized at 18:37hrs.
- 5) Mathugama DPP tripped at 18:18hrs rejecting 10.2MW from the system.
- 6) Biyagama – Pannipitiya 220kV cct 02 tripped and A/R only from Biyagama end due to the operation of distance protection at 18:18hrs. Dhanuka Madhusankha