

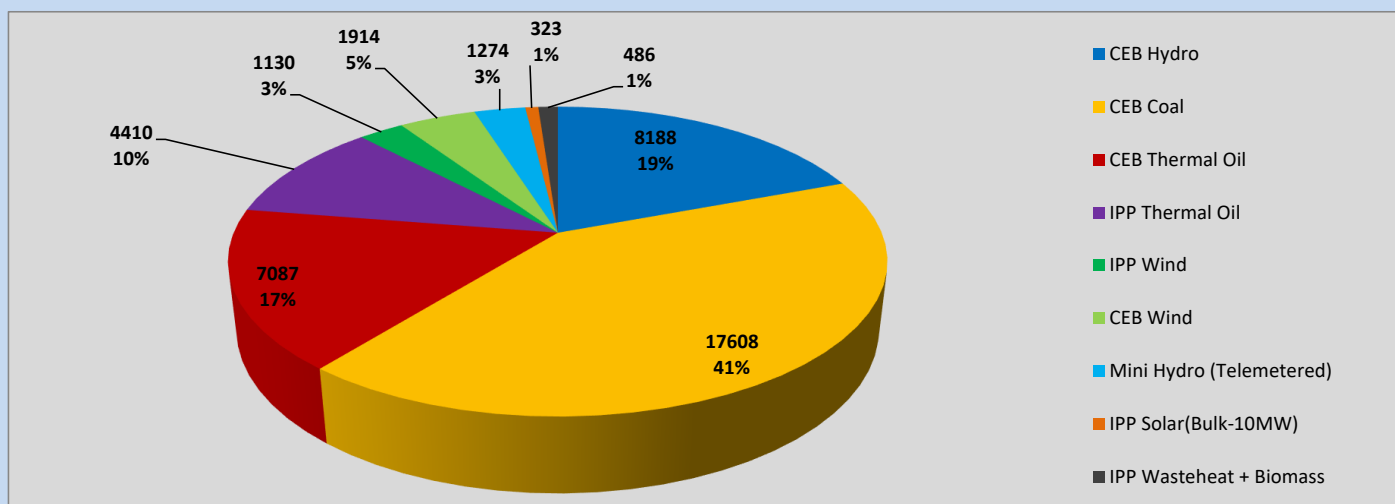
Generation and Reservoirs Statistics

May 24, 2023



PUBLIC UTILITIES COMMISSION OF SRI LANKA

Daily Generation Mix in MWh



Total Generation (Excluding estimated figures) =

42,420 MWh

Estimated figures of CEB generation report

Estimated unserved energy = 0.00 GWh

Estimated Mini Hydro (Non telemetered) = 2716 MWh

Estimated IPP Solar PV (Bulk 1-10MW) = 304 MWh

Estimated Solar Roof Top PV = 1920 MWh

Cumulative Dispatch

Following data excludes the contribution from roof top solar, non telemetered solar and mini hydro plants

For Current Month

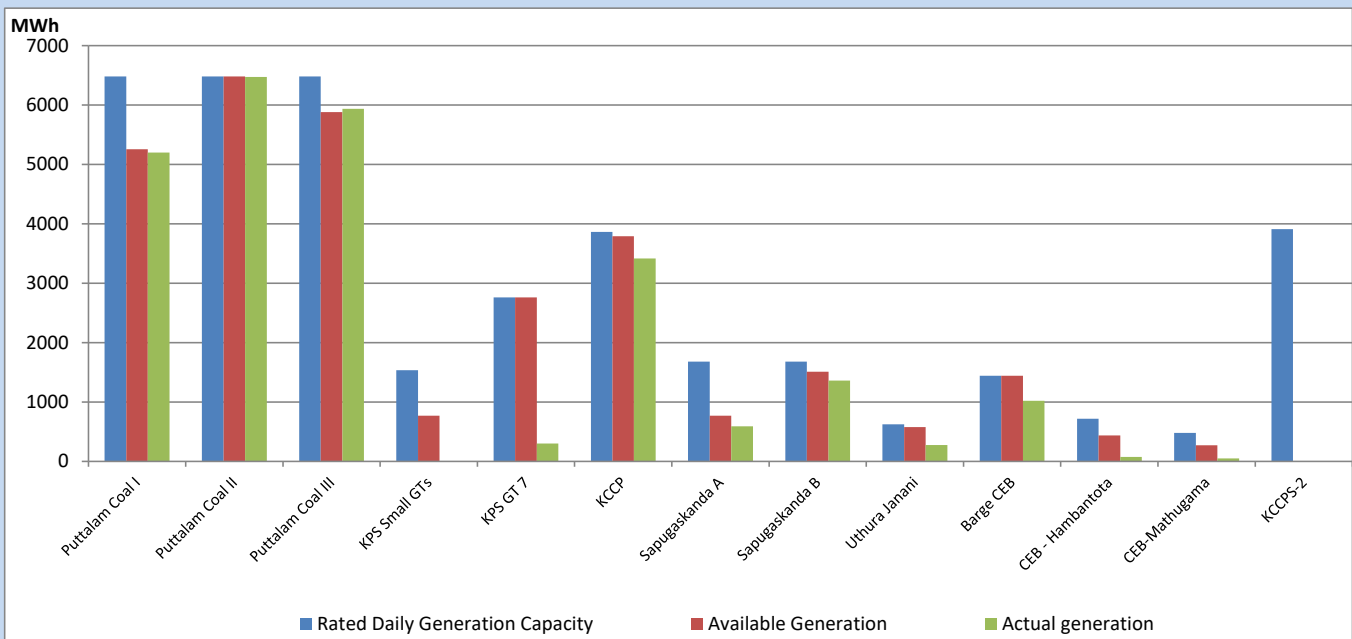
Category	Dispatch (GWh)	
CEB Hydro	211	23.16%
CEB Coal	388	42.66%
CEB Thermal Oil	130	14.29%
IPP Thermal	86	9.41%
SPP Wind	25	2.77%
CEB Wind	30	3.27%
Mini Hydro (Telemetered)	24	2.69%
IPP Solar (Bulk-10MW)	7	0.72%
IPP Wasteheat + BMP	9	1.01%
Total	910	

For Current Year

Category	Dispatch (GWh)	
CEB Hydro	1,412	25.85%
CEB Coal	2,375	43.47%
CEB Thermal Oil	785	14.37%
IPP Thermal	503	9.21%
SPP Wind	83	1.52%
CEB Wind	100	1.83%
Mini Hydro (Telemetered)	120	2.19%
IPP Solar (Bulk-10MW)	41	0.75%
IPP Wasteheat	44	0.81%
Total	5,464	

CEB owned Thermal Plant Dispatch

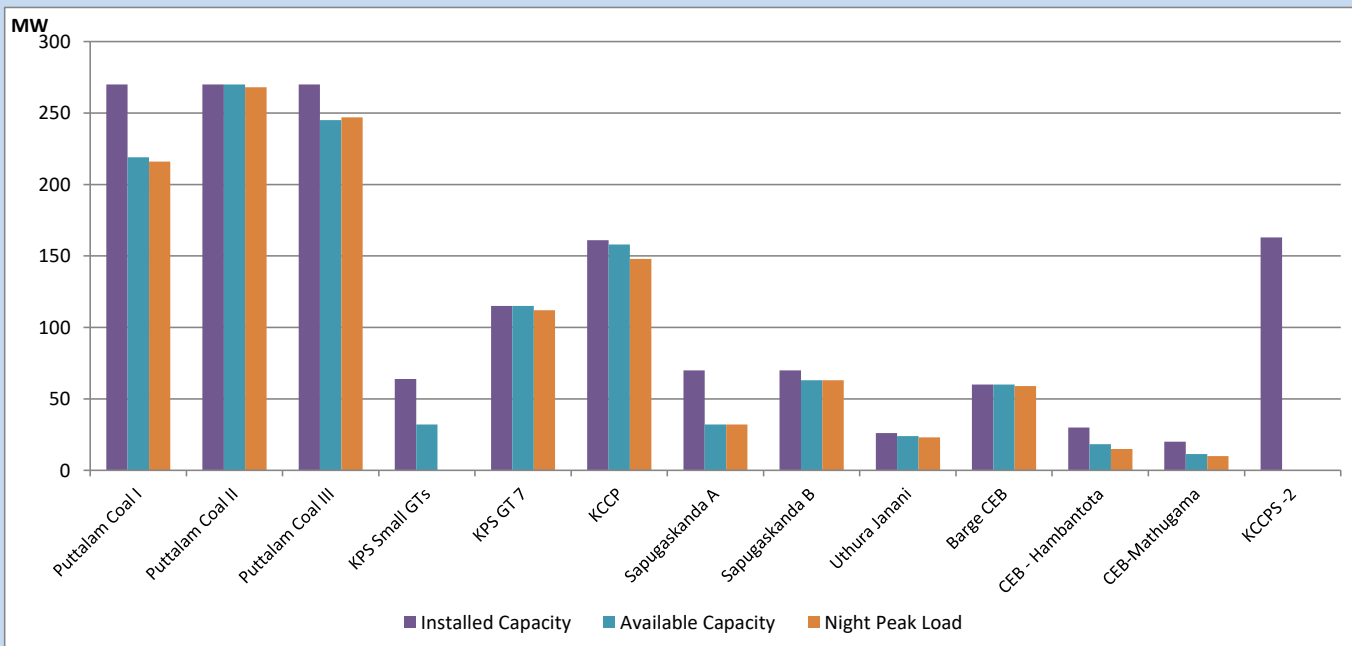
May 24, 2023



Available Generation is estimated based on plant availability at 6.00am on

May 25, 2023

CEB owned Thermal Plant Loading at the Night Peak



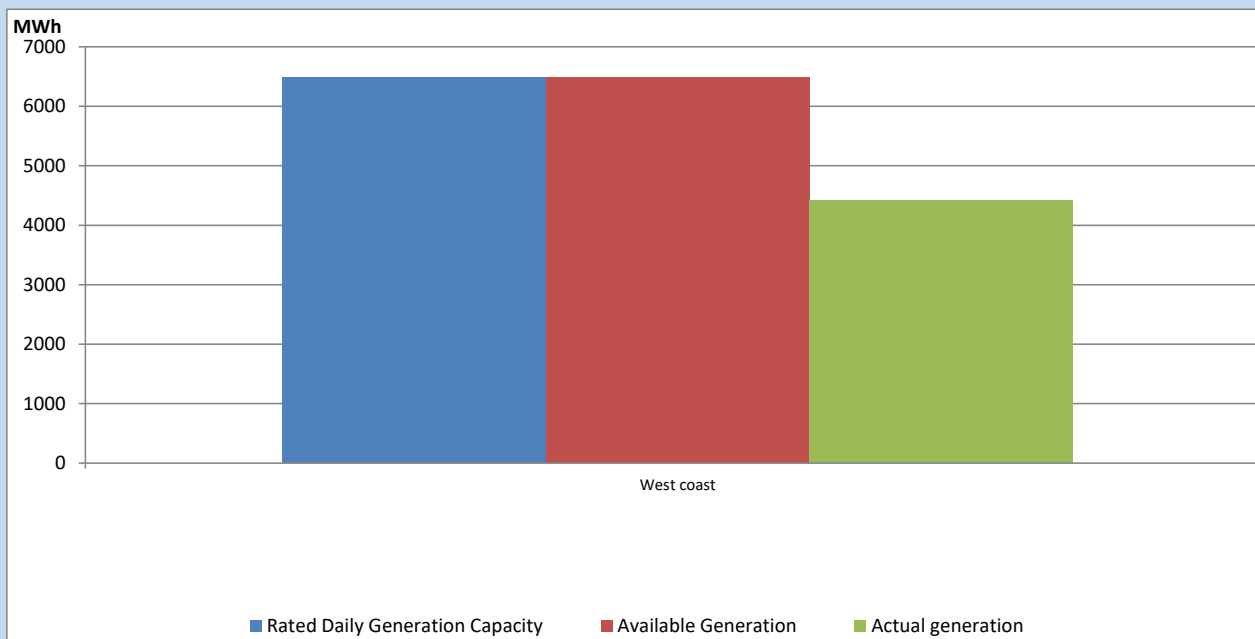
Note-

Plant availability is recorded at 6.00 am on

May 25, 2023

IPP owned Thermal Plant Dispatch

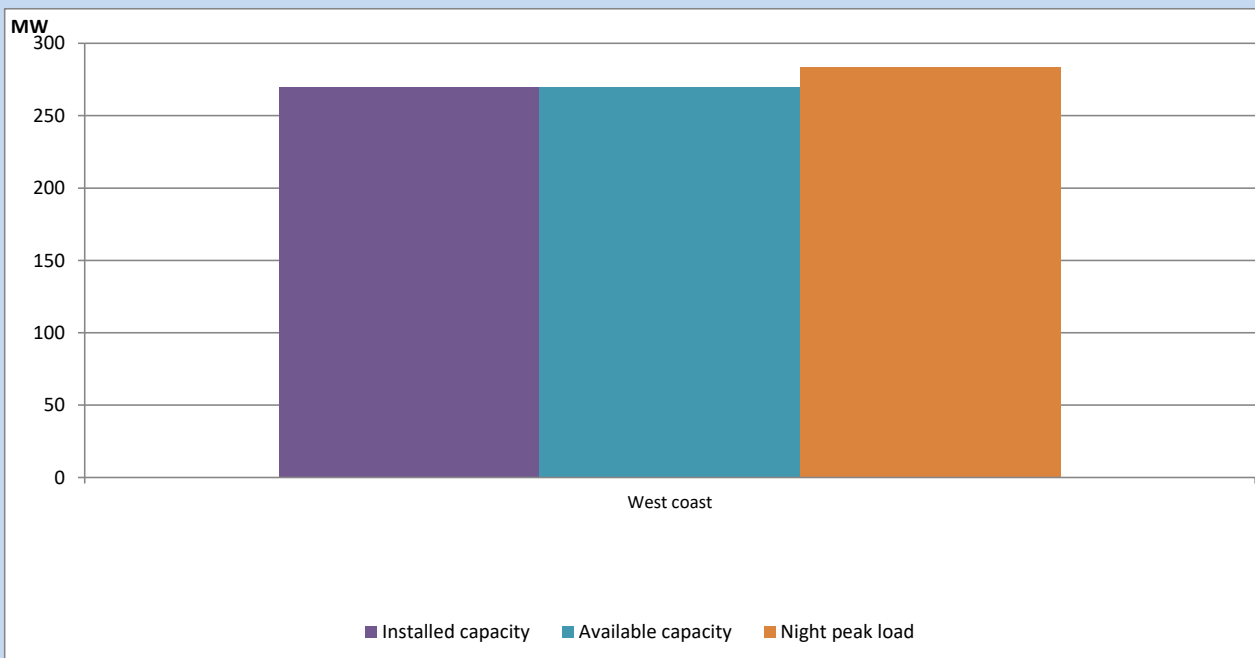
May 24, 2023



Available Generation is estimated based on plant availability at 6.00am on

May 25, 2023

IPP owned Thermal Plant Loading at the Night Peak

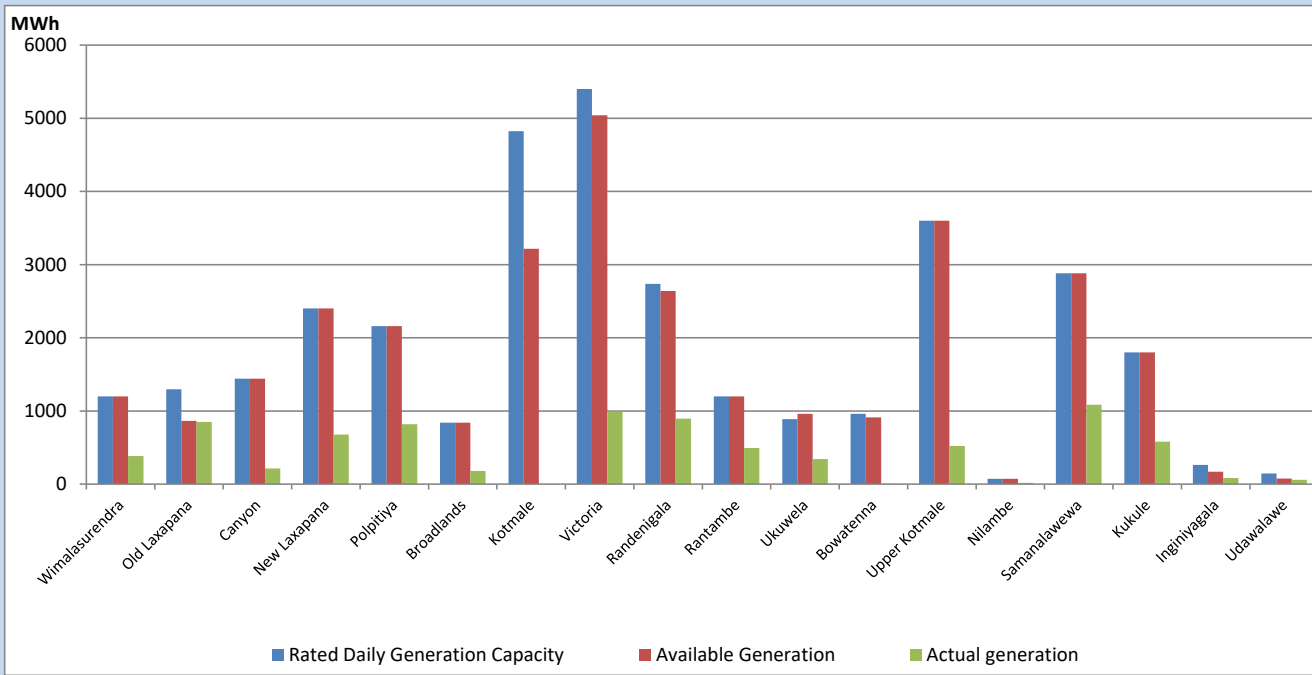


Note- Plant availability is recorded at 6.00 am on

May 25, 2023

Major Hydro Plant Dispatch

May 24, 2023

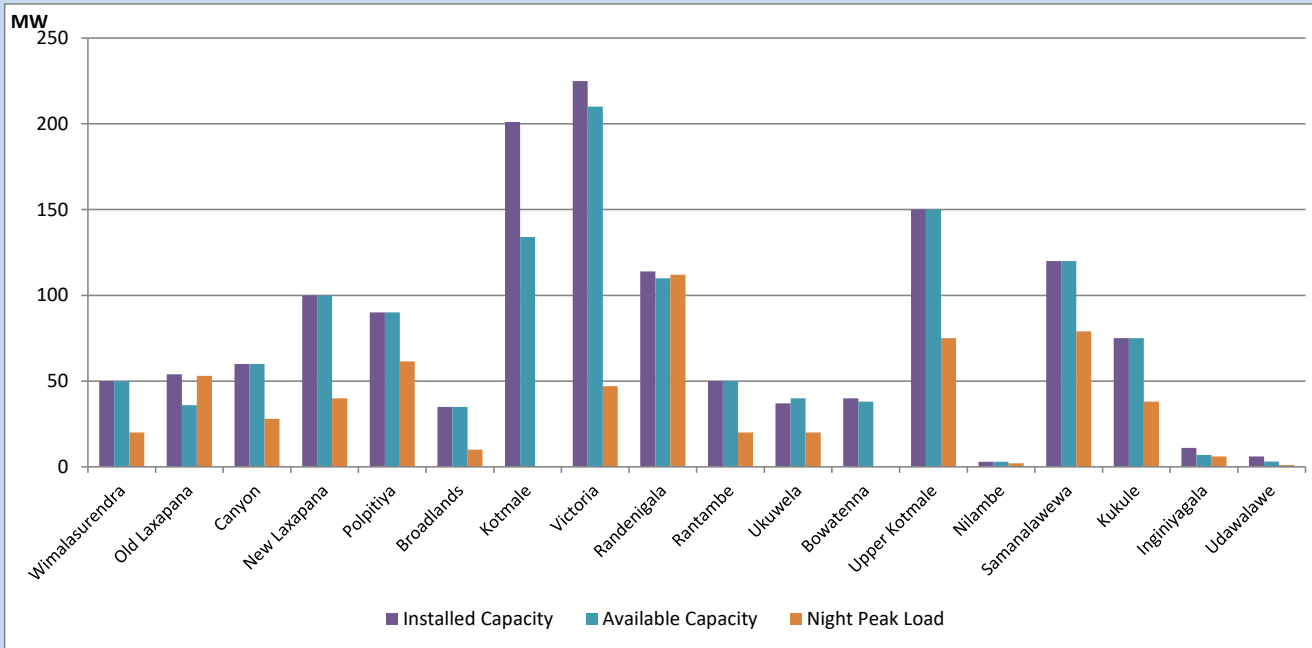


Available Generation is estimated based on plant availability at 6.00am on
Broadlands power plant is operating in the Commissioning Stage

May 25, 2023

Major Hydro Plant Loading at Night Peak

May 24, 2023



Note- Plant availability is recorded at 6.00 am on
Broadlands power plant is operating in the Commissioning Stage

May 25, 2023

Summary of Major Plant performance

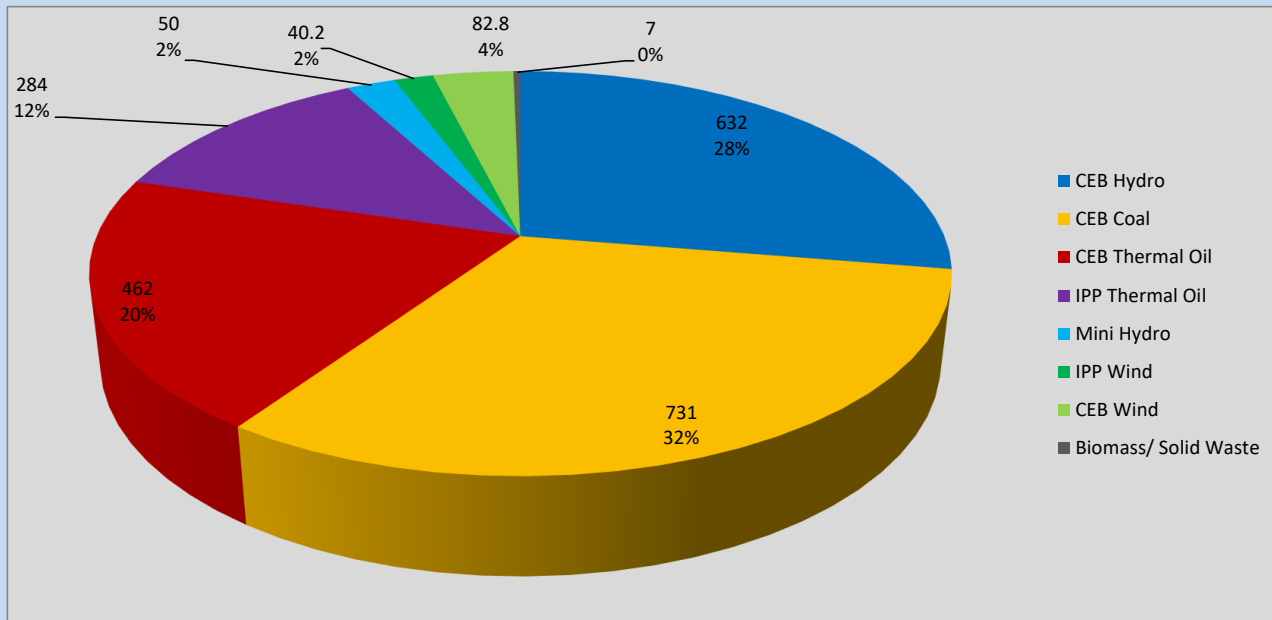
Plant	Installed Capacity	Plant Availability	Night peak Load	Plant Dispatch
	(MW)	(MW)	(MW)	(MWh)
Wimalasurendra	50	50	20	383
Old Laxapana	54	36	53	849
Canyon	60	60	28	213
New Laxapana	100	100	40	678
Polpitiya	90	90	62	819
Broadlands	35	35	10	179
Kotmale	201	134	0	0
Victoria	225	210	47	987
Randenigala	114	110	112	896
Rantambe	50	50	20	494
Ukuwela	37	40	20	341
Bowatenna	40	38	0	4
Upper Kotmale	150	150	75	521
Nilambe	3	3	2	16
Samanalawewa	120	120	79	1,086
Kukule	75	75	38	581
Inginiyagala	11	7	6	84
Udawalawe	6	3	1	57
Puttalam Coal I	270	219	216	5,200
Puttalam Coal II	270	270	268	6,472
Puttalam Coal III	270	245	247	5,936
KPS Small GTs	64	32	0	0
KPS GT 7	115	115	112	302
KCCP	161	158	148	3,418
Sapugaskanda A	70	32	32	589
Sapugaskanda B	70	63	63	1,359
Uthura Janani	26	24	23	274
Barge CEB	60	60	59	1,021
CEB-Hambantota	30	18	15	74
CEB-Mathugama	20	11	10	50
ACE Matara	24	0	0	0
Asia Power	50	0	0	0
KCCPS -2	163	0	0	0
West Coast	270	270	284	4,410
Nothern Power	36	0	0	0
ACE Embilipitiya	93	0	0	0
Total	3,483	2,829	2,270	42,420

Plant availability is the availability recorded at 6 am on

May 25, 2023

Contribution to the Night Peak in MW

May 24, 2023

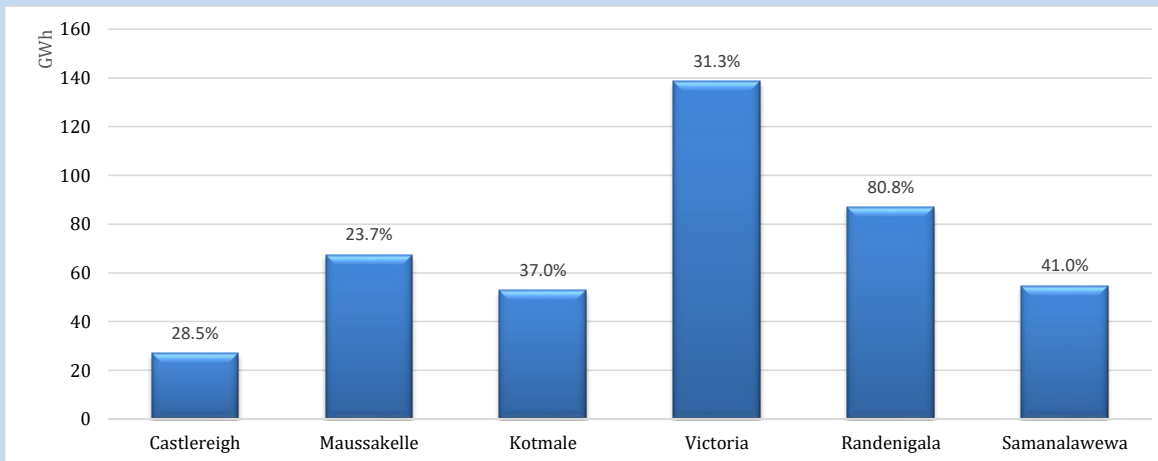


Night Peak*	2,289 MW
Day Peak Maximum Demand	2,017 MW
Day Peak Minimum Demand	1,705 MW
Off Peak Minimum Demand	1,295 MW

Above figures are excluding contribution from roof top solar, non telemetered solar and mini hydro plants

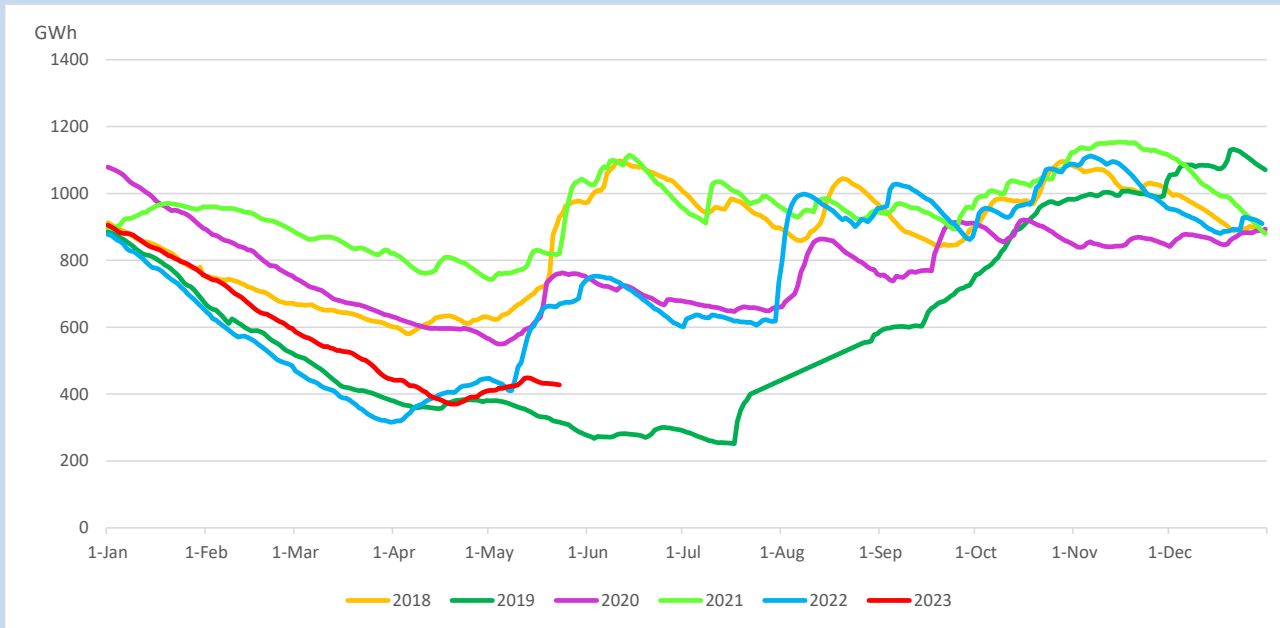
Reservoir Levels -

as at 06.00 Hr on May 25, 2023

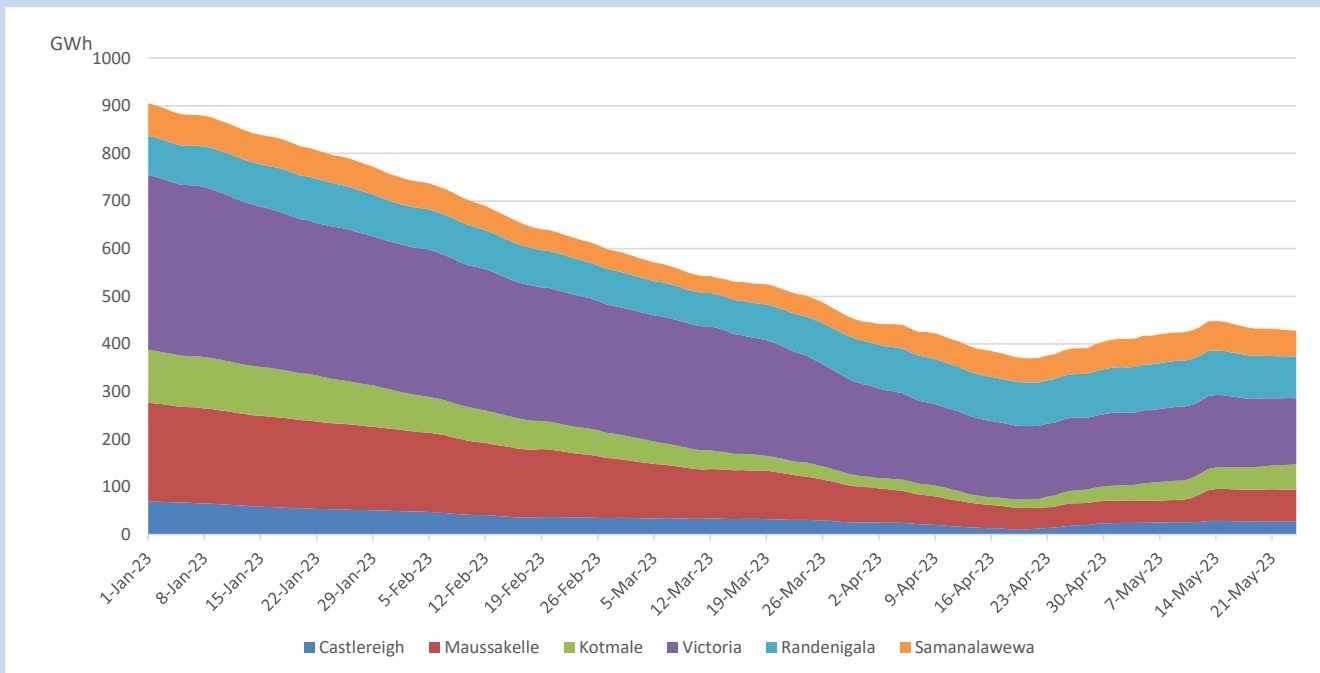


Total Reservoir Level	427.4 GWh
% of Total capacity	35.5%

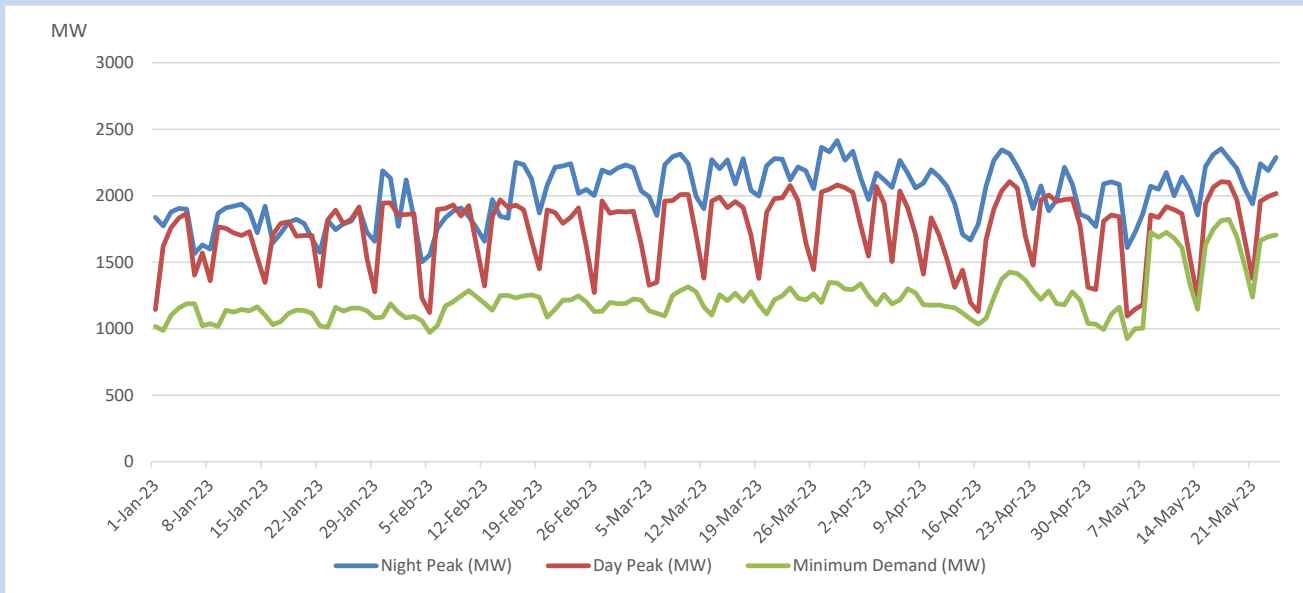
Comparison of Total Reservoir Storage Levels with Past Years



Variation of Major Hydro Reservoir Levels in the current year (GWh)



Variation of Demand during the current year

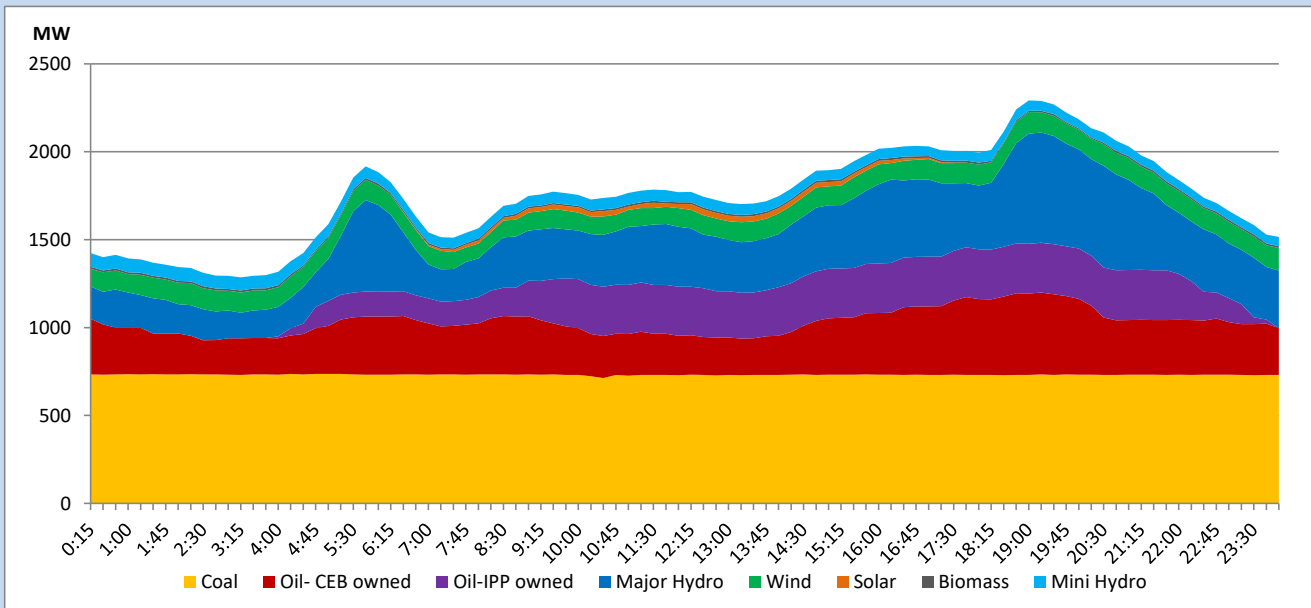


The above figures are excluding contribution from roof top solar, non telemetered solar and mini hydro plants

Daily Load Curve

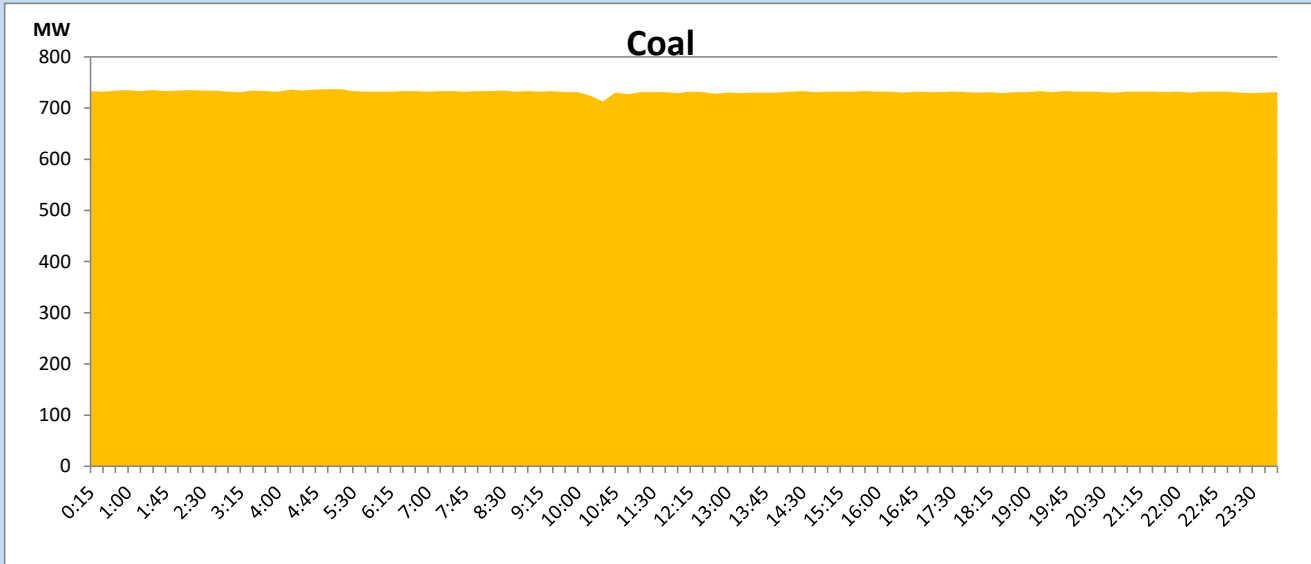
May 24, 2023

Solar and wind data is based on Telemetered Power Stations only



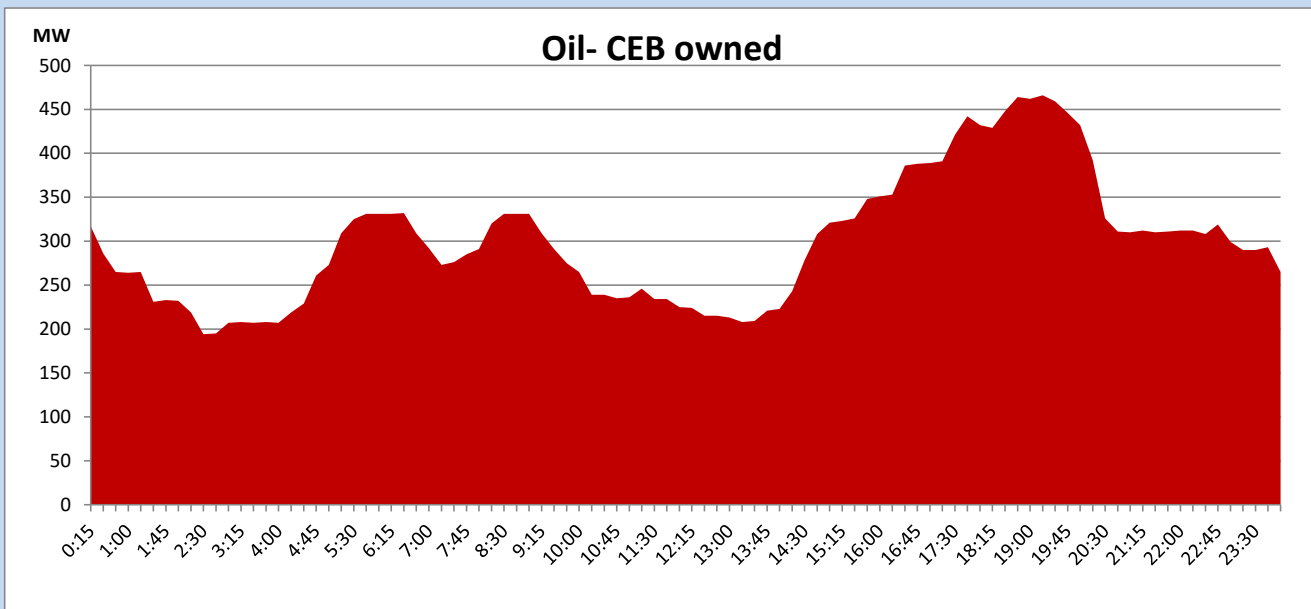
Coal Generation during

May 24, 2023



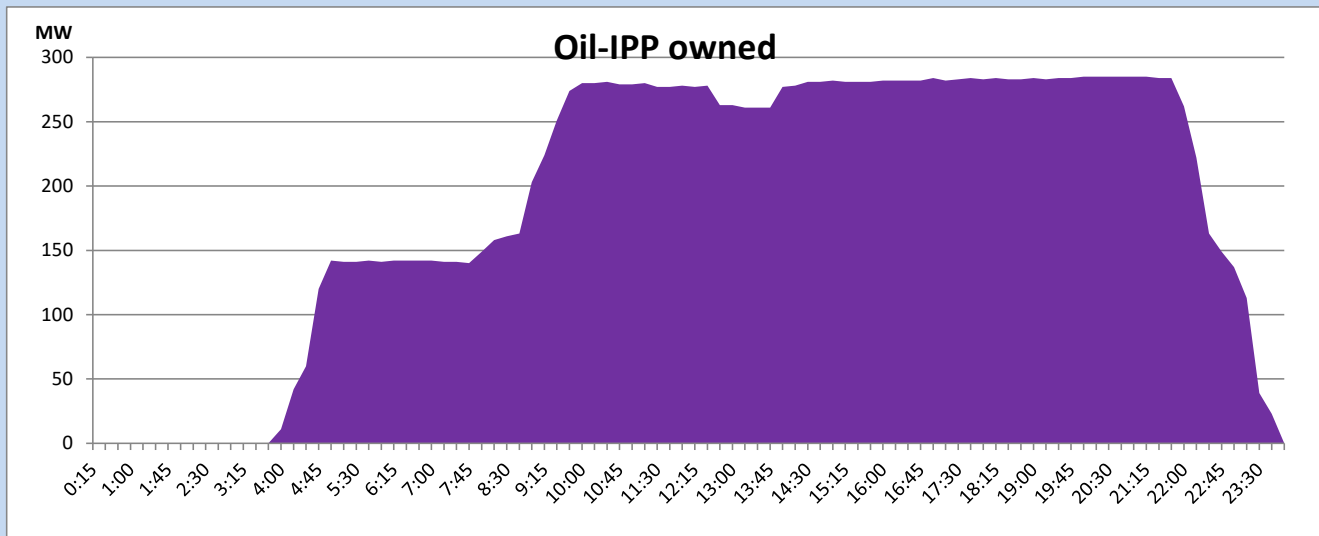
CEB Oil Plant Generation during

May 24, 2023



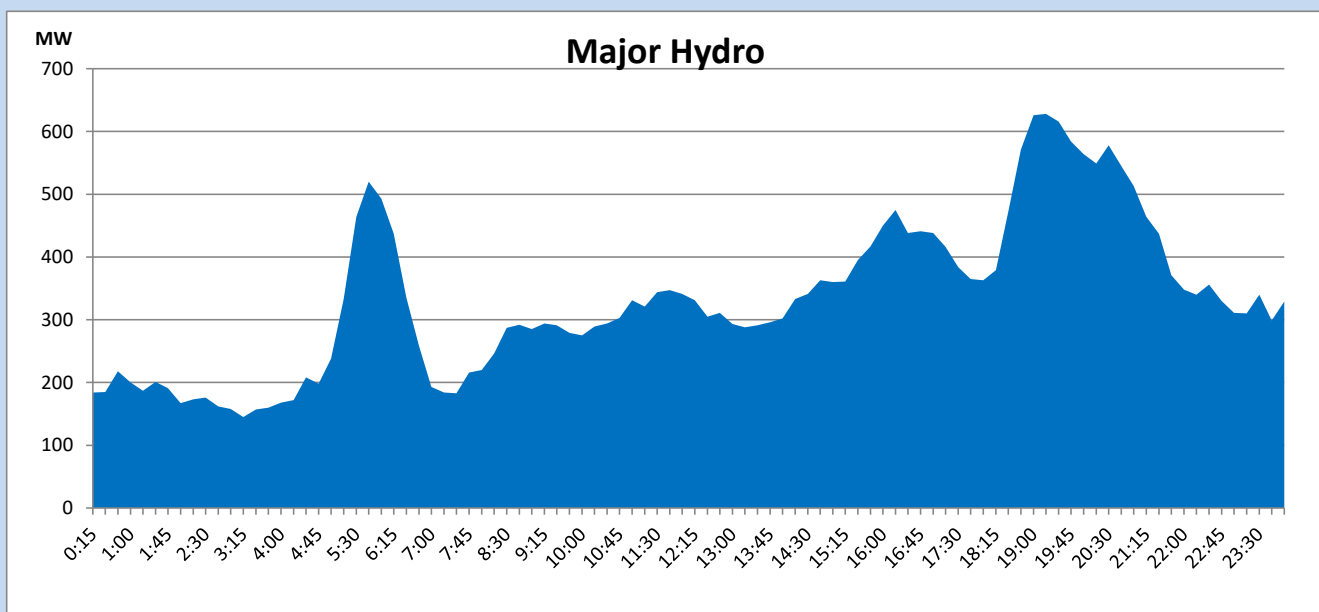
IPP Oil Plant Generation during

May 24, 2023



Major Hydro Generation during

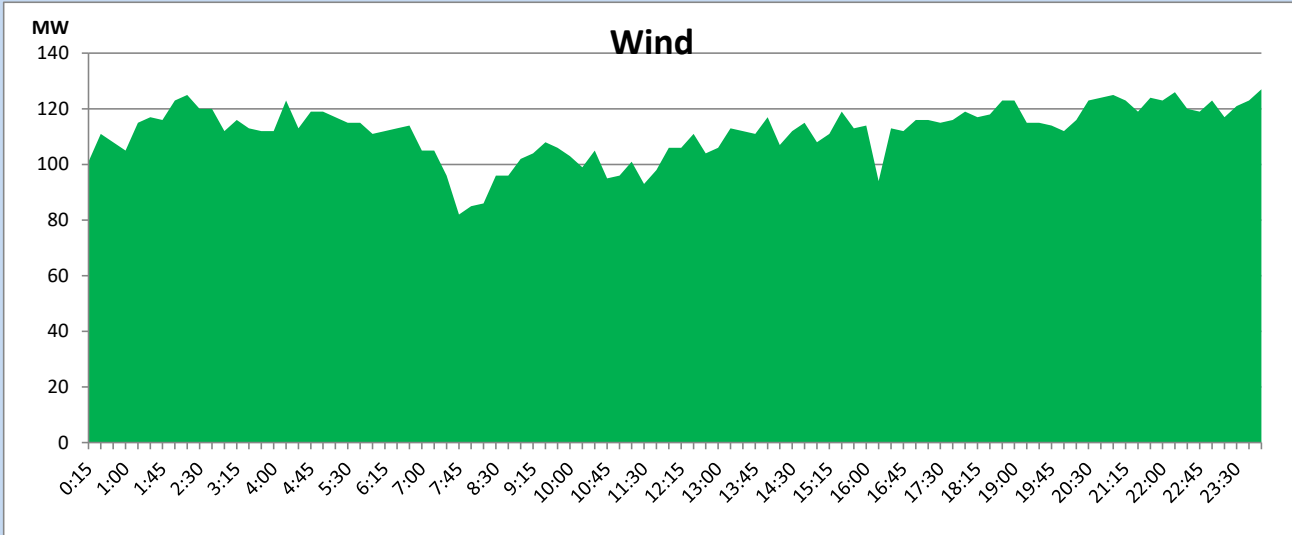
May 24, 2023



Wind Generation during

May 24, 2023

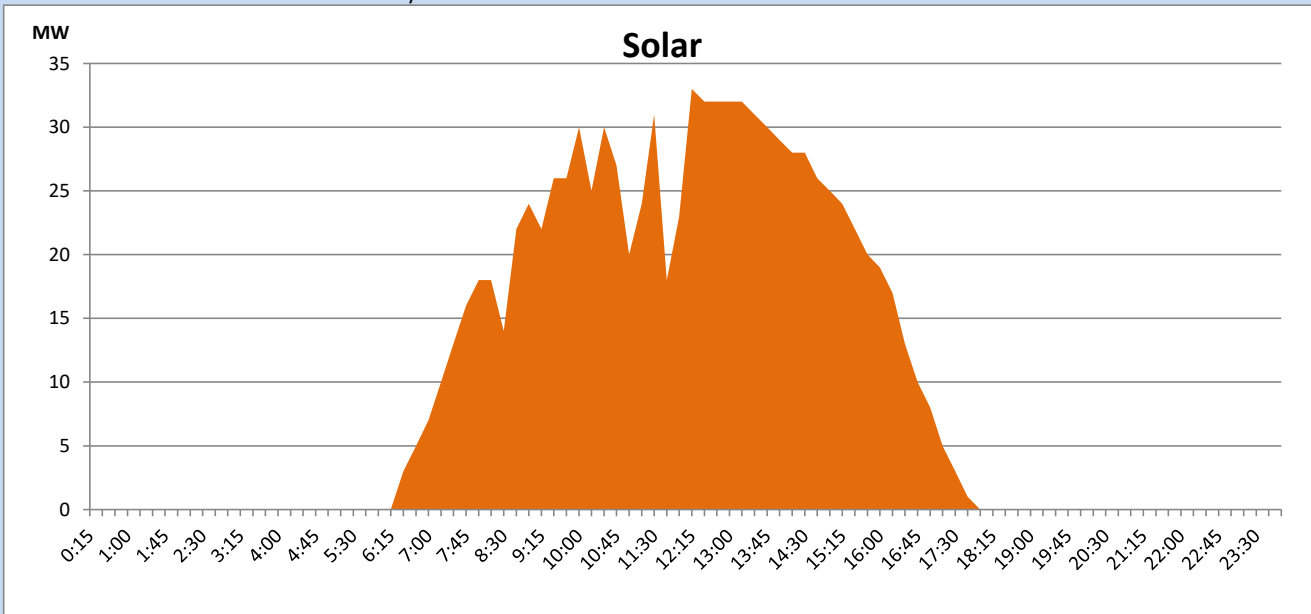
Based on Telemetered Power Stations only



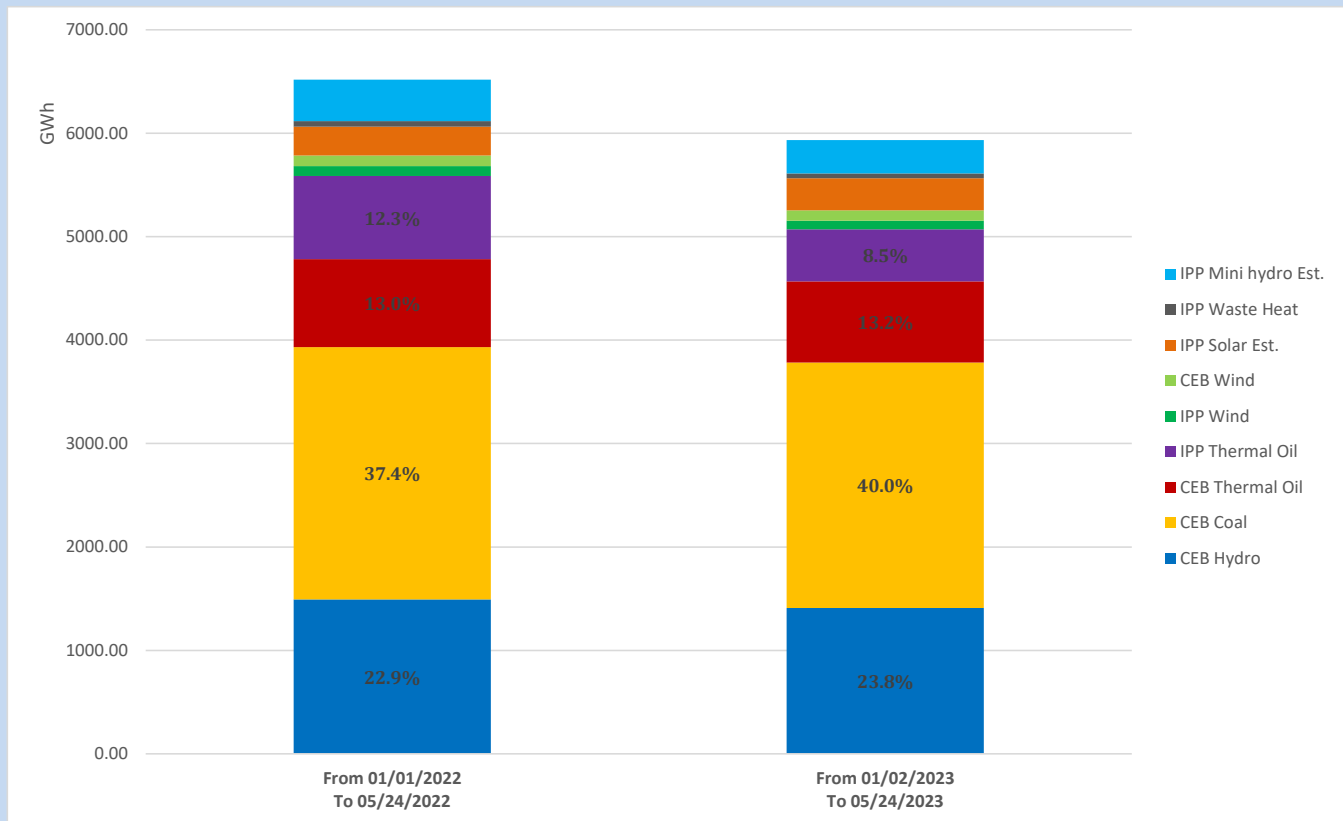
Solar Generation during

May 24, 2023

Based on Telemetered Power Stations only



Cumulative Dispatch Comparison with Last Year



The above figures are including contribution from roof top solar, non telemetered solar and mini hydro plants

Thermal Plant Fuel types

Power Station	Primary Fuel
CEB Thermal	
Sapugaskanda 1	Heavy Fuel
Sapugaskanda 2	Heavy Fuel
Kelanitissa Small Gas Turbines	Auto Diesel
GT 7 - Kelanitissa	Auto Diesel
Kelanitissa CCY	Naphtha or Diesel
Lakvijaya 1	Coal
Lakvijaya 2	Coal
Lakvijaya 3	Coal
Uthuru Janani	Heavy Fuel
Barge CEB	Heavy Fuel
KCCPS -2	Auto Diesel

Power Station	Primary Fuel
Private Thermal	
West Coast	Auto Diesel / Heavy Fuel

Major Incidents reported during the day

May 24, 2023

1) Nil.