

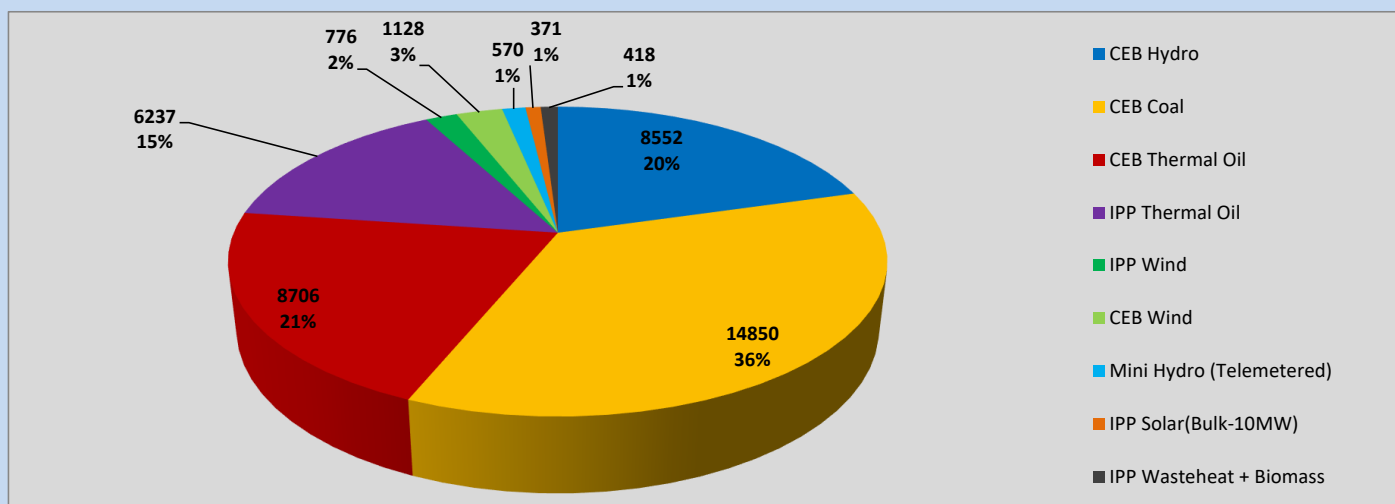
# Generation and Reservoirs Statistics

May 23, 2023



PUBLIC UTILITIES COMMISSION OF SRI LANKA

## Daily Generation Mix in MWh



Total Generation (Excluding estimated figures) =

41,608 MWh

### Estimated figures of CEB generation report

Estimated unserved energy = 0.00 GWh

Estimated Mini Hydro (Non telemetered) = 3420 MWh

Estimated IPP Solar PV (Bulk 1-10MW) = 304 MWh

Estimated Solar Roof Top PV = 1920 MWh

## Cumulative Dispatch

Following data excludes the contribution from roof top solar, non telemetered solar and mini hydro plants

### For Current Month

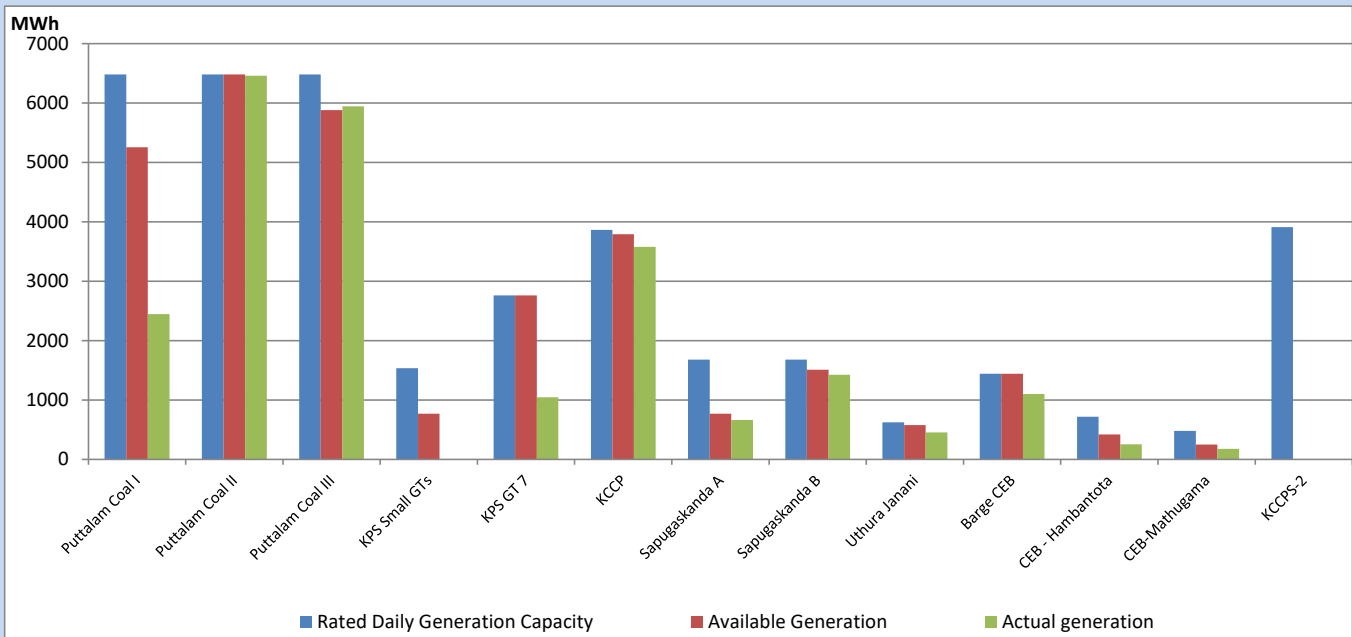
Category	Dispatch (GWh)	
CEB Hydro	203	23.34%
CEB Coal	371	42.71%
CEB Thermal Oil	123	14.18%
IPP Thermal	81	9.37%
SPP Wind	24	2.78%
CEB Wind	28	3.21%
Mini Hydro (Telemetered)	23	2.67%
IPP Solar(Bulk-10MW)	6	0.71%
IPP Wasteheat + BMP	9	1.00%
<b>Total</b>	<b>868</b>	

### For Current Year

Category	Dispatch (GWh)	
CEB Hydro	1,404	25.90%
CEB Coal	2,358	43.48%
CEB Thermal Oil	778	14.35%
IPP Thermal	499	9.20%
SPP Wind	82	1.51%
CEB Wind	98	1.81%
Mini Hydro (Telemetered)	119	2.19%
IPP Solar(Bulk-10MW)	41	0.75%
IPP Wasteheat	44	0.80%
<b>Total</b>	<b>5,422</b>	

## CEB owned Thermal Plant Dispatch

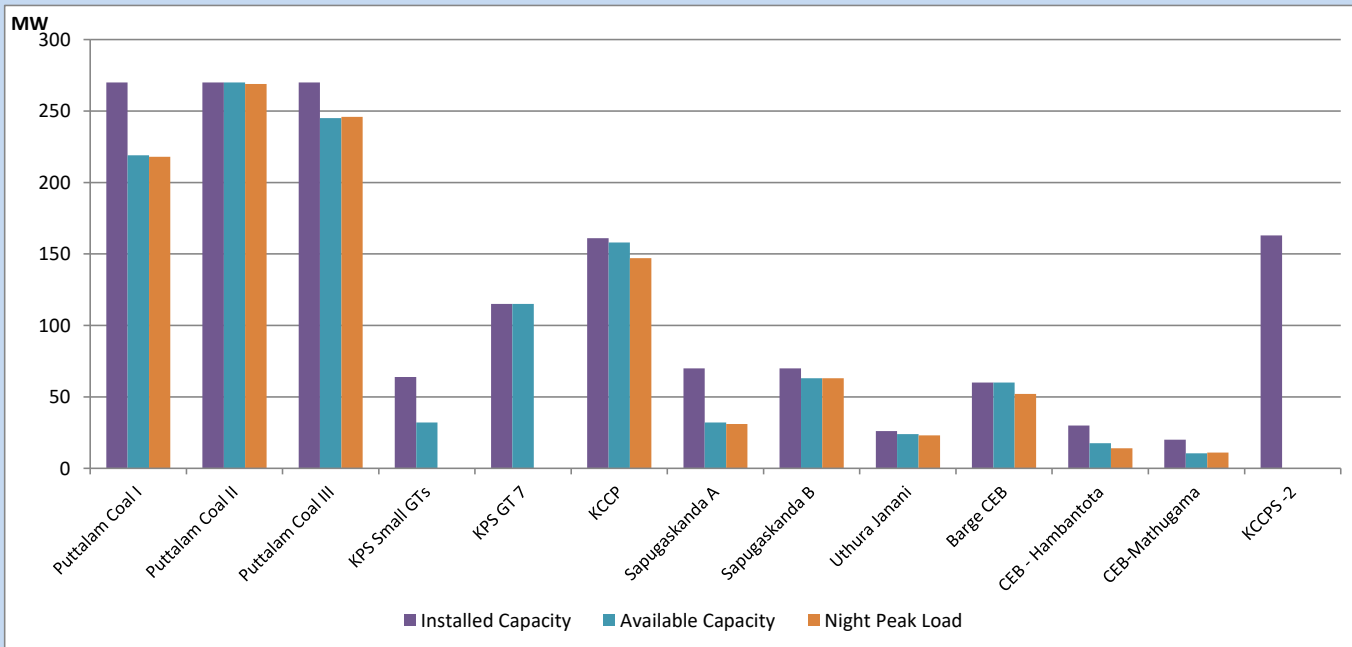
May 23, 2023



Available Generation is estimated based on plant availability at 6.00am on

May 24, 2023

## CEB owned Thermal Plant Loading at the Night Peak

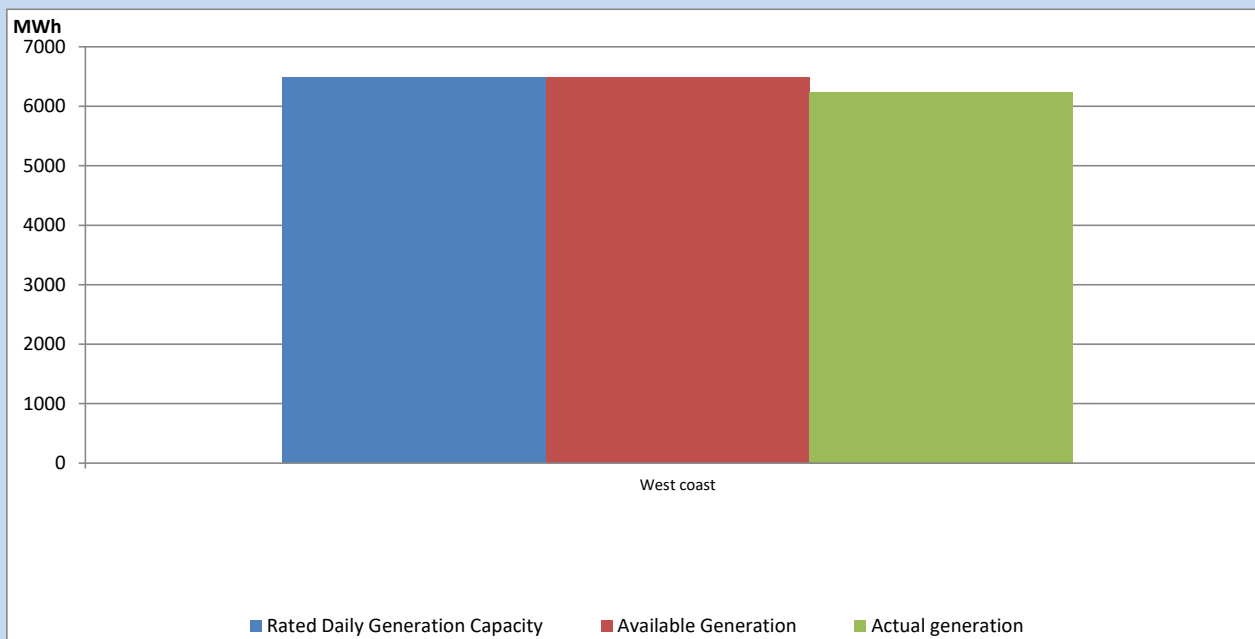


Note-  
Plant availability is recorded at 6.00 am on

May 24, 2023

## IPP owned Thermal Plant Dispatch

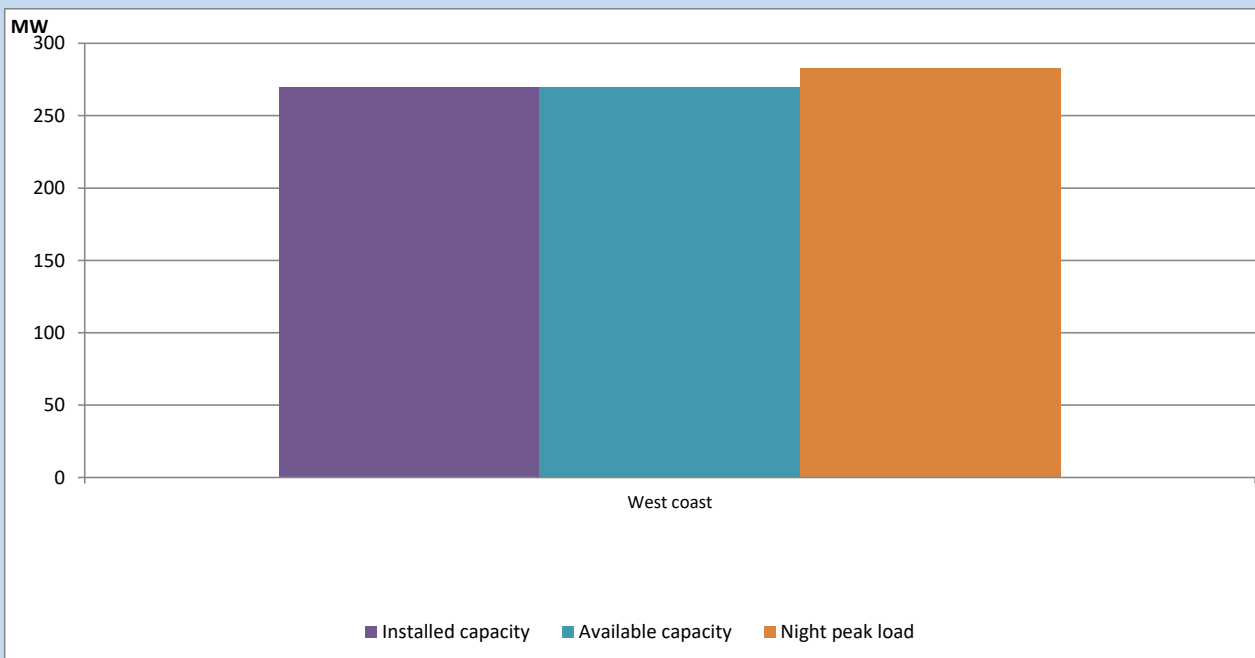
May 23, 2023



Available Generation is estimated based on plant availability at 6.00am on

May 24, 2023

## IPP owned Thermal Plant Loading at the Night Peak

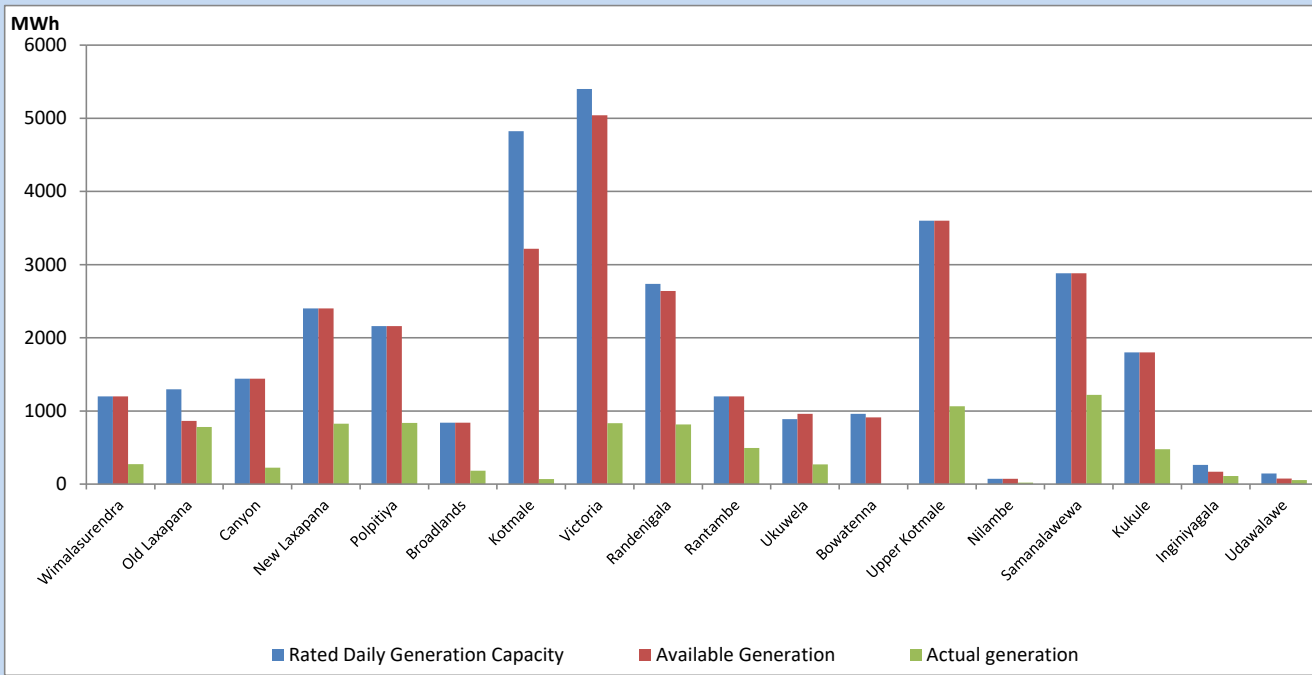


Note- Plant availability is recorded at 6.00 am on

May 24, 2023

## Major Hydro Plant Dispatch

May 23, 2023

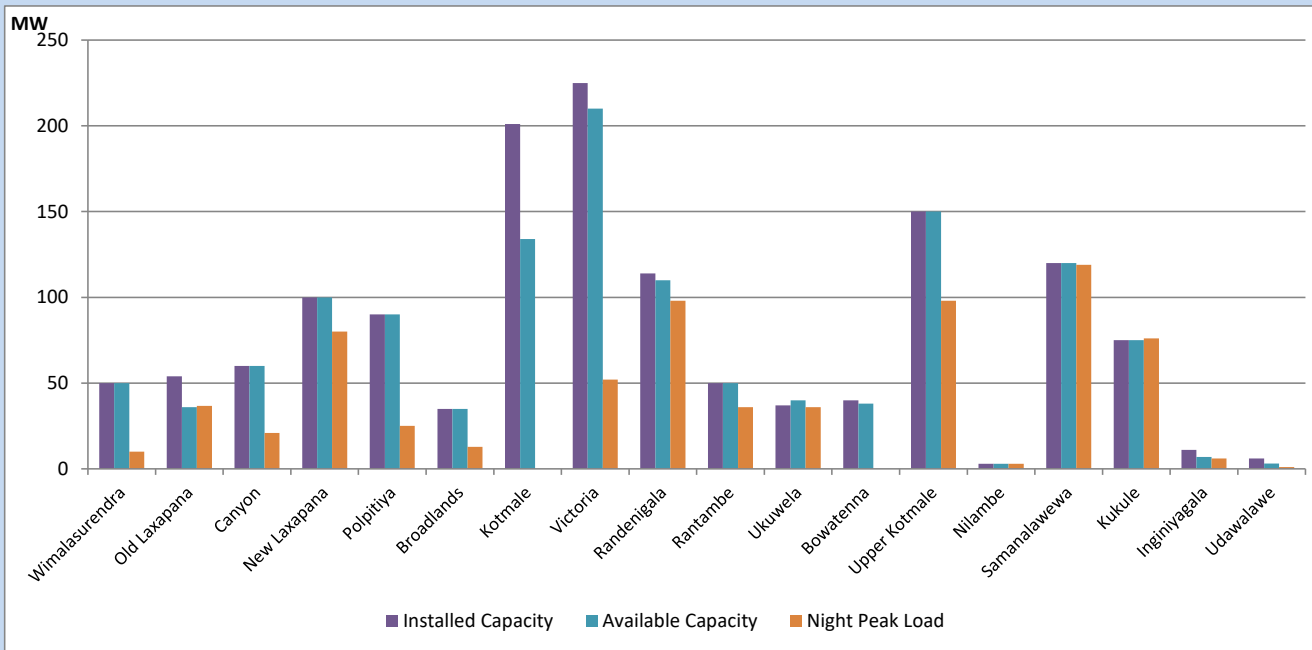


Available Generation is estimated based on plant availability at 6.00am on  
Broadlands power plant is operating in the Commissioning Stage

May 24, 2023

## Major Hydro Plant Loading at Night Peak

May 23, 2023



Note- Plant availability is recorded at 6.00 am on  
Broadlands power plant is operating in the Commissioning Stage

May 24, 2023

## Summary of Major Plant performance

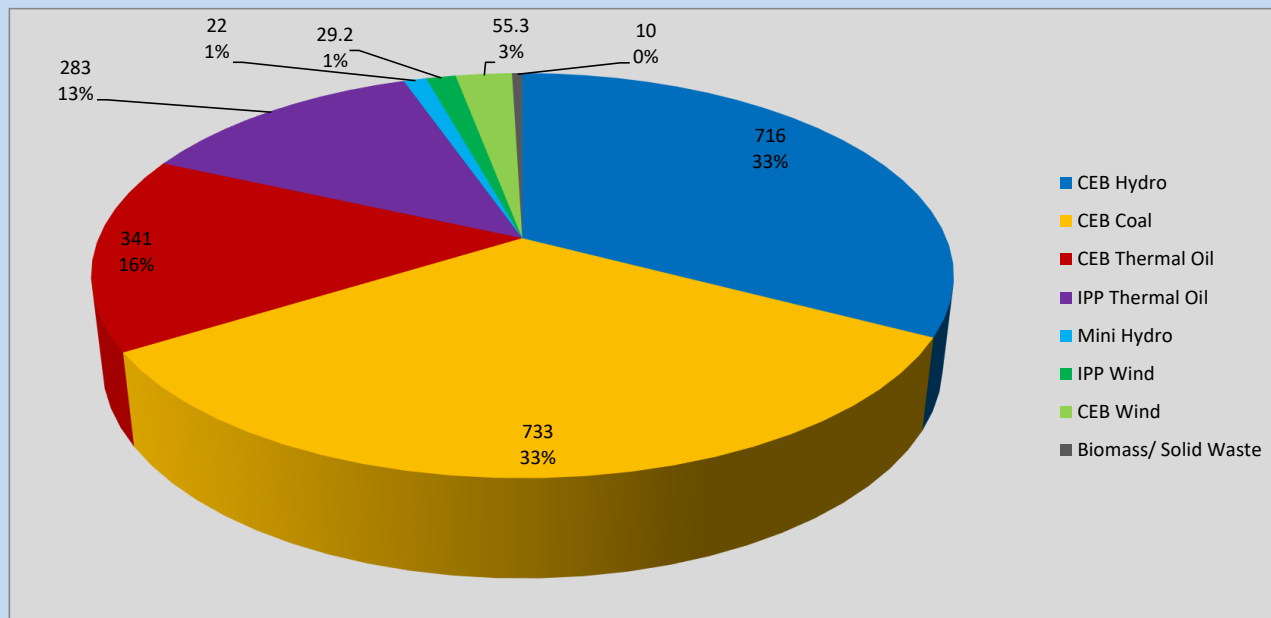
Plant	Installed Capacity	Plant Availability	Night peak Load	Plant Dispatch
	(MW)	(MW)	(MW)	(MWh)
Wimalasurendra	50	50	10	274
Old Laxapana	54	36	37	782
Canyon	60	60	21	225
New Laxapana	100	100	80	824
Polpitiya	90	90	25	837
Broadlands	35	35	13	183
Kotmale	201	134	0	70
Victoria	225	210	52	831
Randenigala	114	110	98	816
Rantambe	50	50	36	493
Ukuwela	37	40	36	270
Bowatenna	40	38	0	0
Upper Kotmale	150	150	98	1,063
Nilambe	3	3	3	21
Samanalawewa	120	120	119	1,219
Kukule	75	75	76	477
Inginiyagala	11	7	6	111
Udawalawe	6	3	1	56
Puttalam Coal I	270	219	218	2,445
Puttalam Coal II	270	270	269	6,460
Puttalam Coal III	270	245	246	5,945
KPS Small GTs	64	32	0	0
KPS GT 7	115	115	0	1,046
KCCP	161	158	147	3,579
Sapugaskanda A	70	32	31	664
Sapugaskanda B	70	63	63	1,426
Uthura Janani	26	24	23	456
Barge CEB	60	60	52	1,103
CEB-Hambantota	30	18	14	255
CEB-Mathugama	20	11	11	177
ACE Matara	24	0	0	0
Asia Power	50	0	0	0
KCCPS -2	163	0	0	0
West Coast	270	270	283	6,237
Nothern Power	36	0	0	0
ACE Embilipitiya	93	0	0	0
<b>Total</b>	<b>3,483</b>	<b>2,827</b>	<b>2,185</b>	<b>41,608</b>

Plant availability is the availability recorded at 6 am on

May 24, 2023

## Contribution to the Night Peak in MW

May 23, 2023

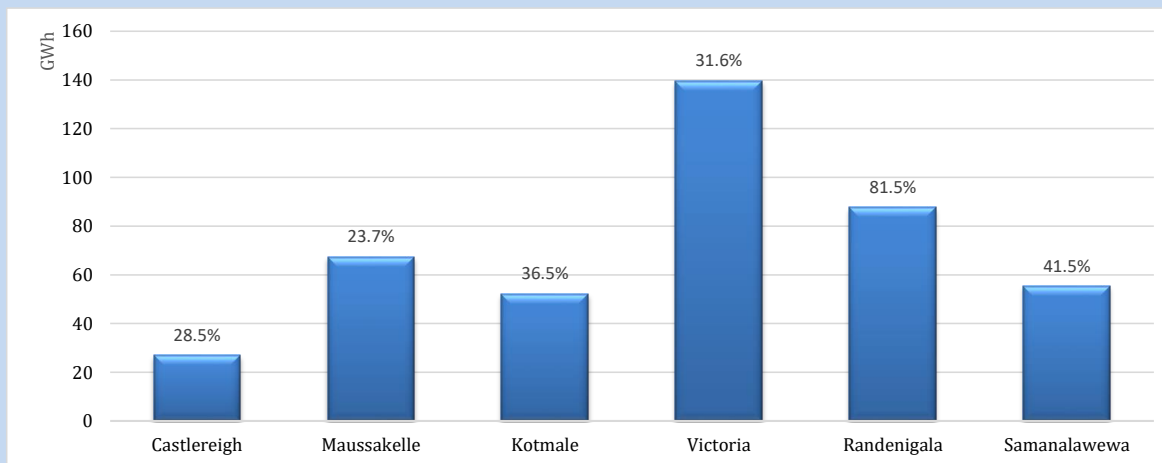


Night Peak*	2,190 MW
Day Peak Maximum Demand	1,994 MW
Day Peak Minimum Demand	1,691 MW
Off Peak Minimum Demand	1,283 MW

Above figures are excluding contribution from roof top solar, non telemetered solar and mini hydro plants

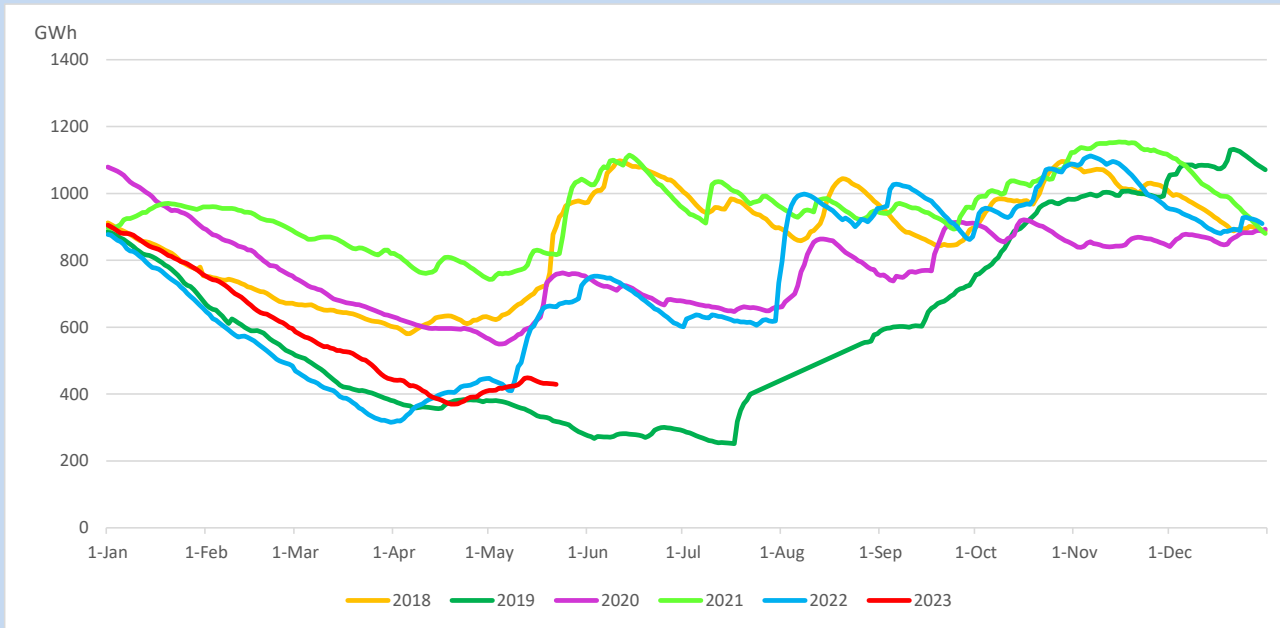
## Reservoir Levels -

as at 06.00 Hr on May 24, 2023

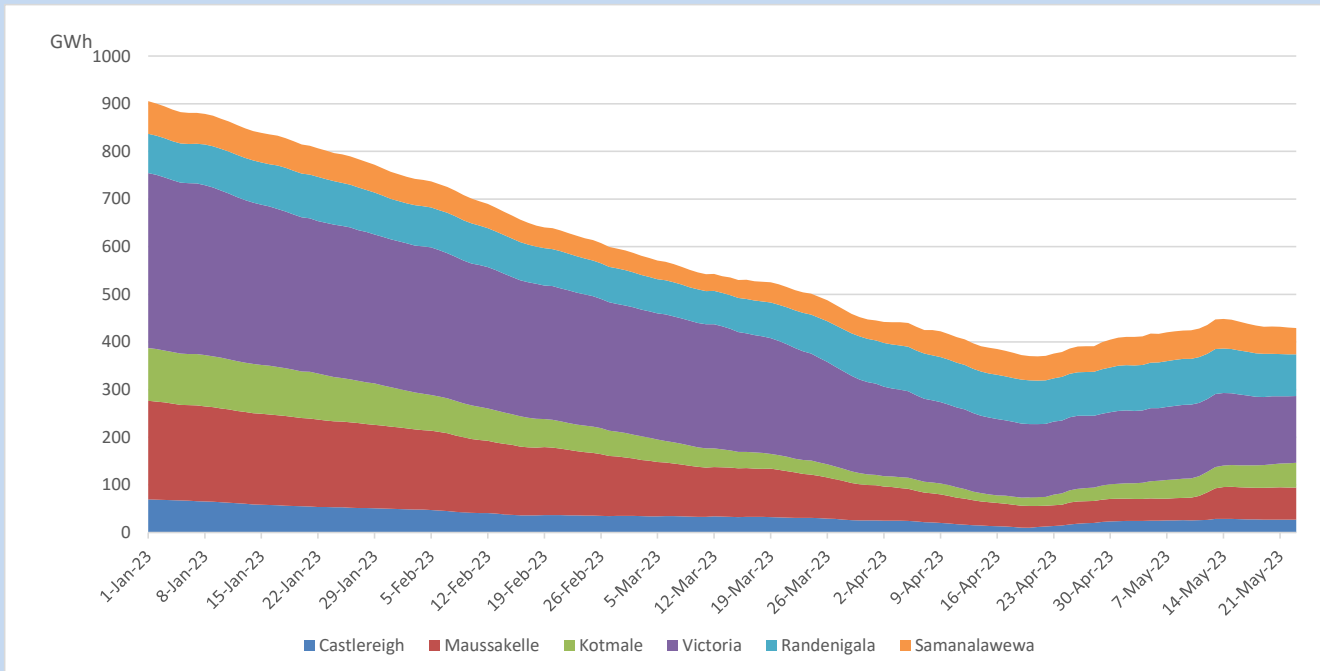


Total Reservoir Level	429.2 GWh
% of Total capacity	35.6%

## Comparison of Total Reservoir Storage Levels with Past Years

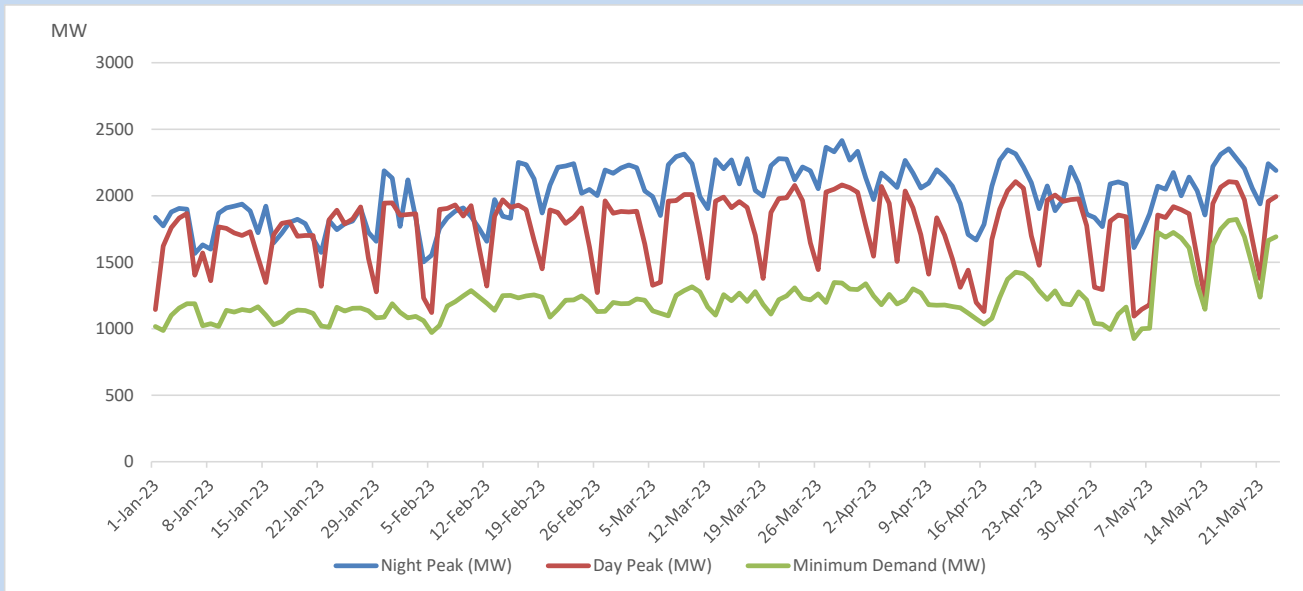


## Variation of Major Hydro Reservoir Levels in the current year (GWh)





## Variation of Demand during the current year

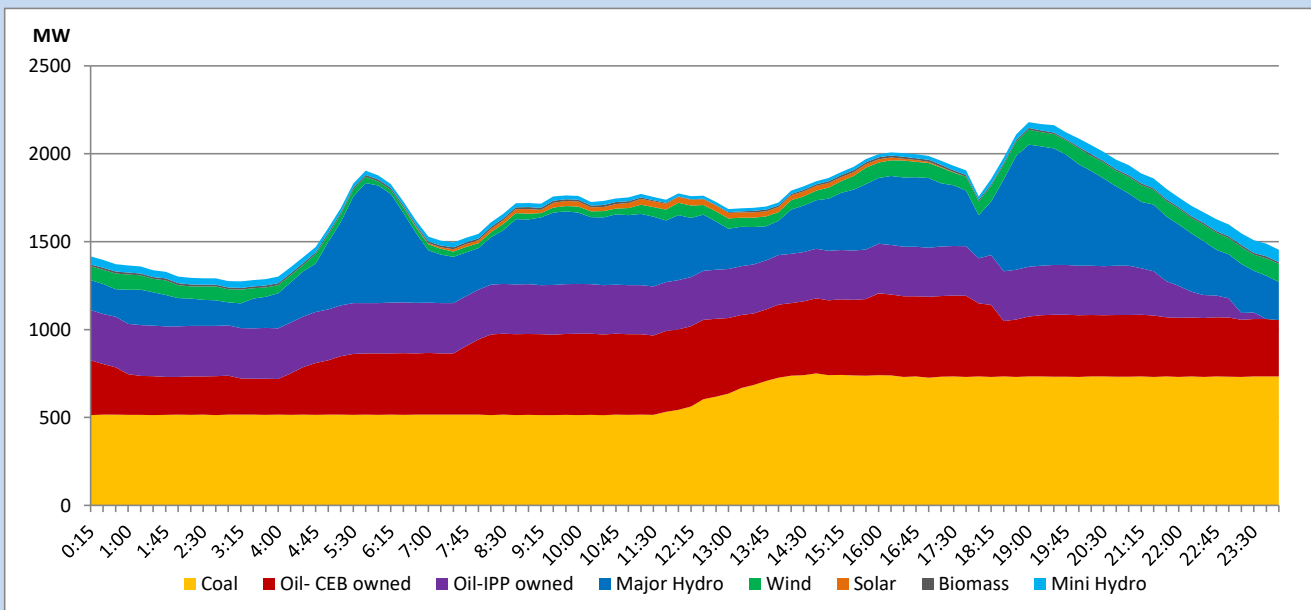


The above figures are excluding contribution from roof top solar, non telemetered solar and mini hydro plants

## Daily Load Curve

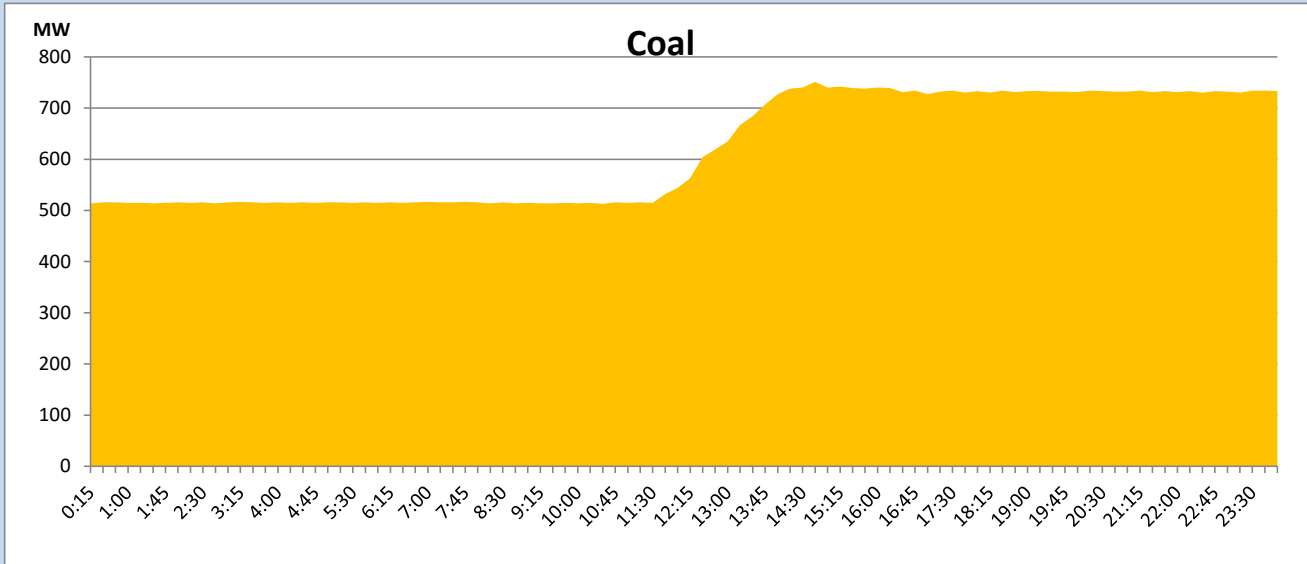
May 23, 2023

Solar and wind data is based on Telemetered Power Stations only



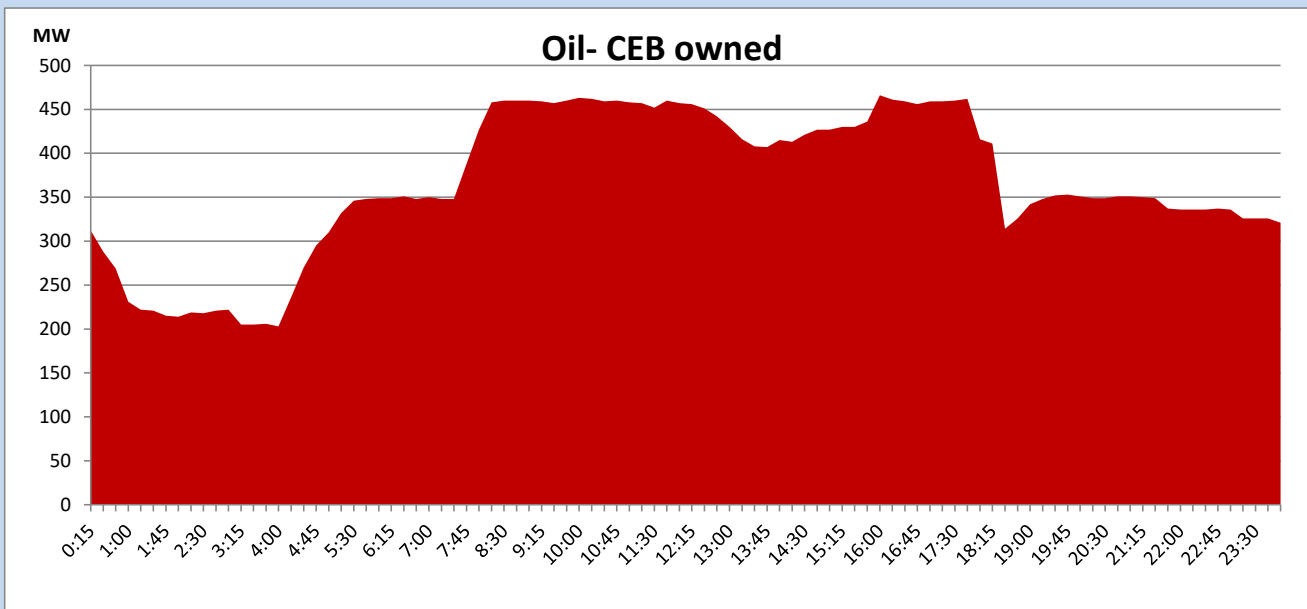
## Coal Generation during

May 23, 2023



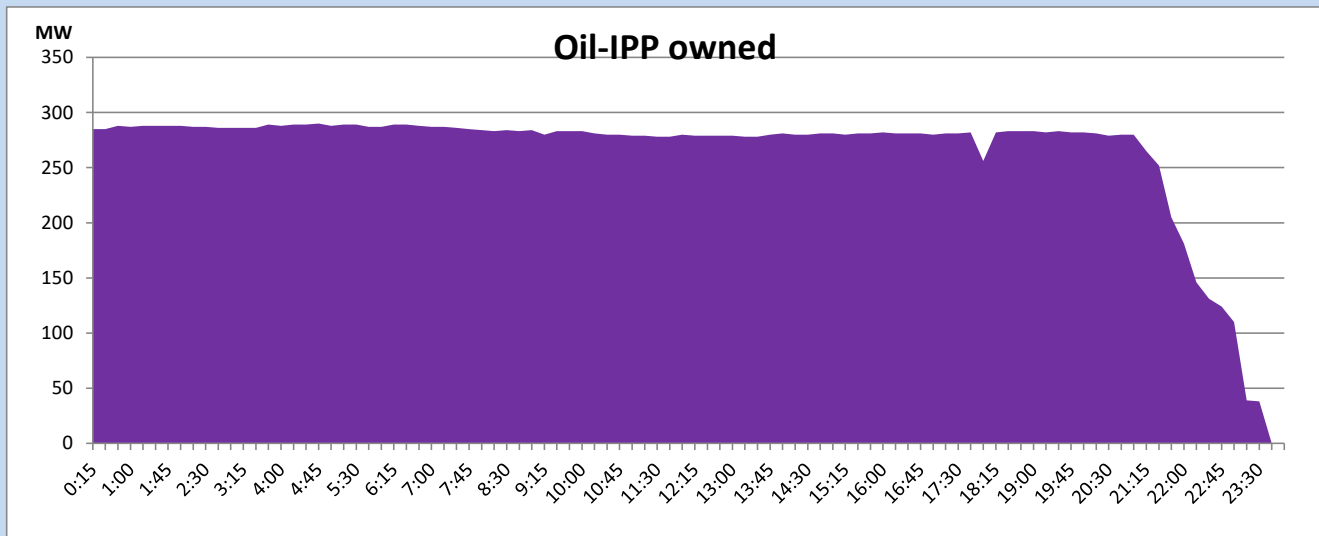
## CEB Oil Plant Generation during

May 23, 2023



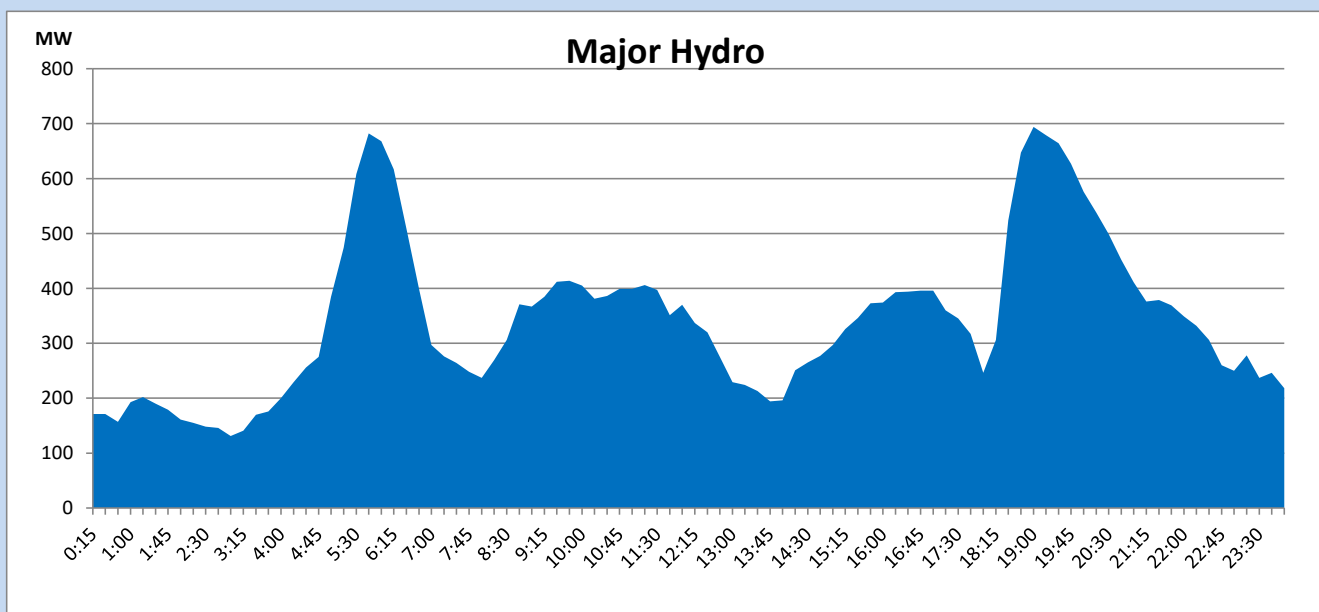
## IPP Oil Plant Generation during

May 23, 2023



## Major Hydro Generation during

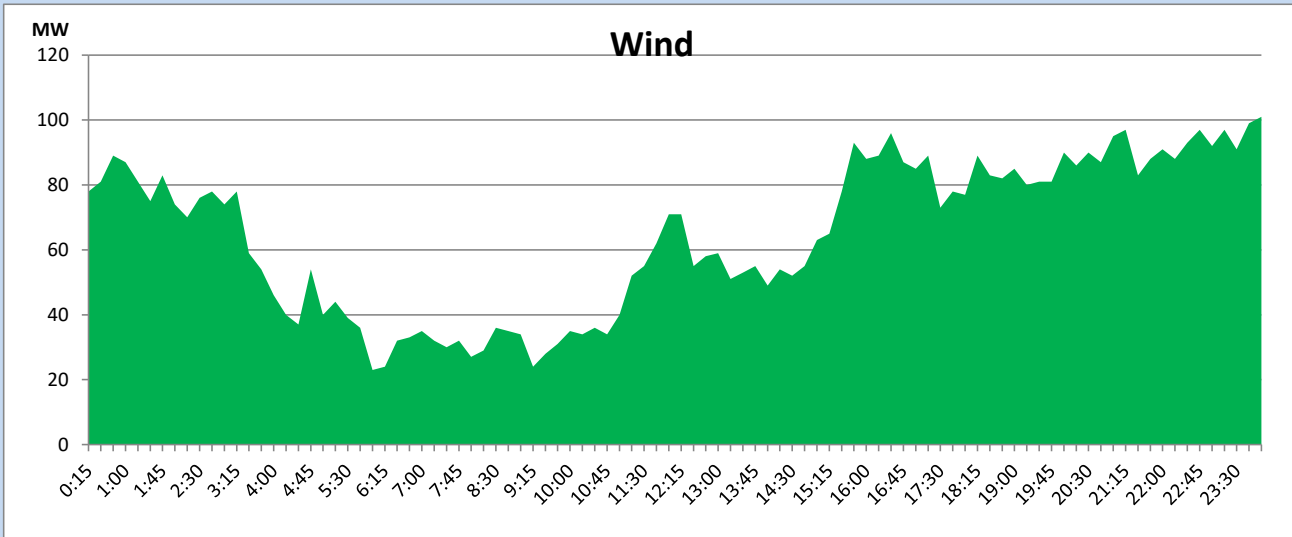
May 23, 2023



## Wind Generation during

May 23, 2023

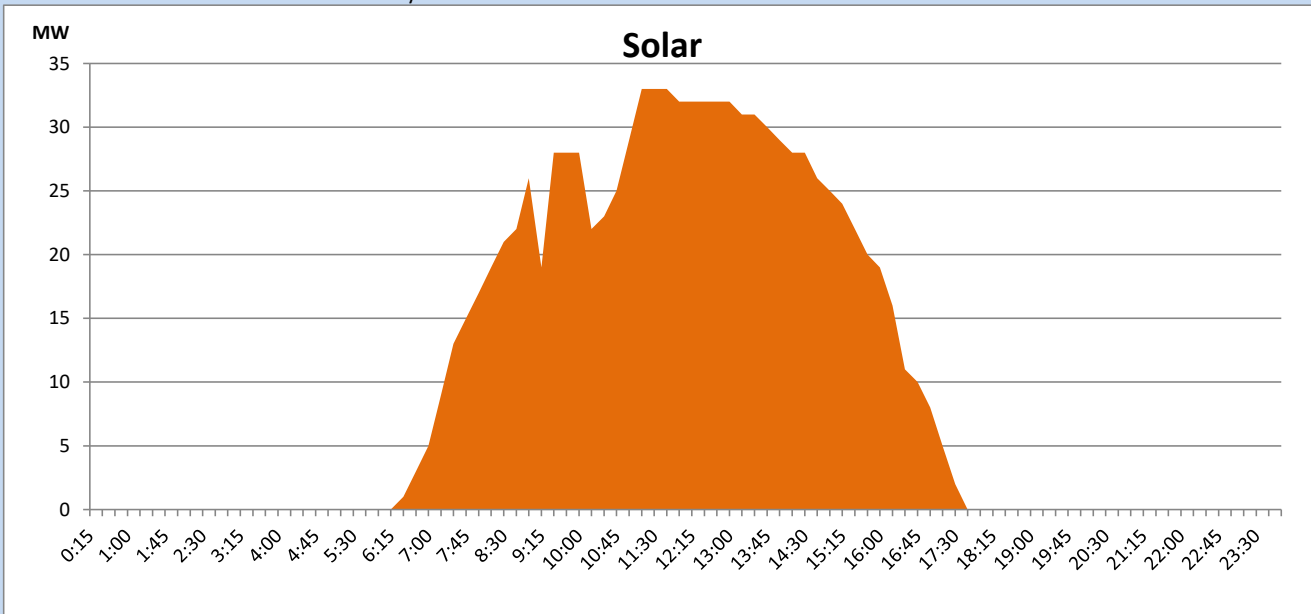
Based on Telemetered Power Stations only



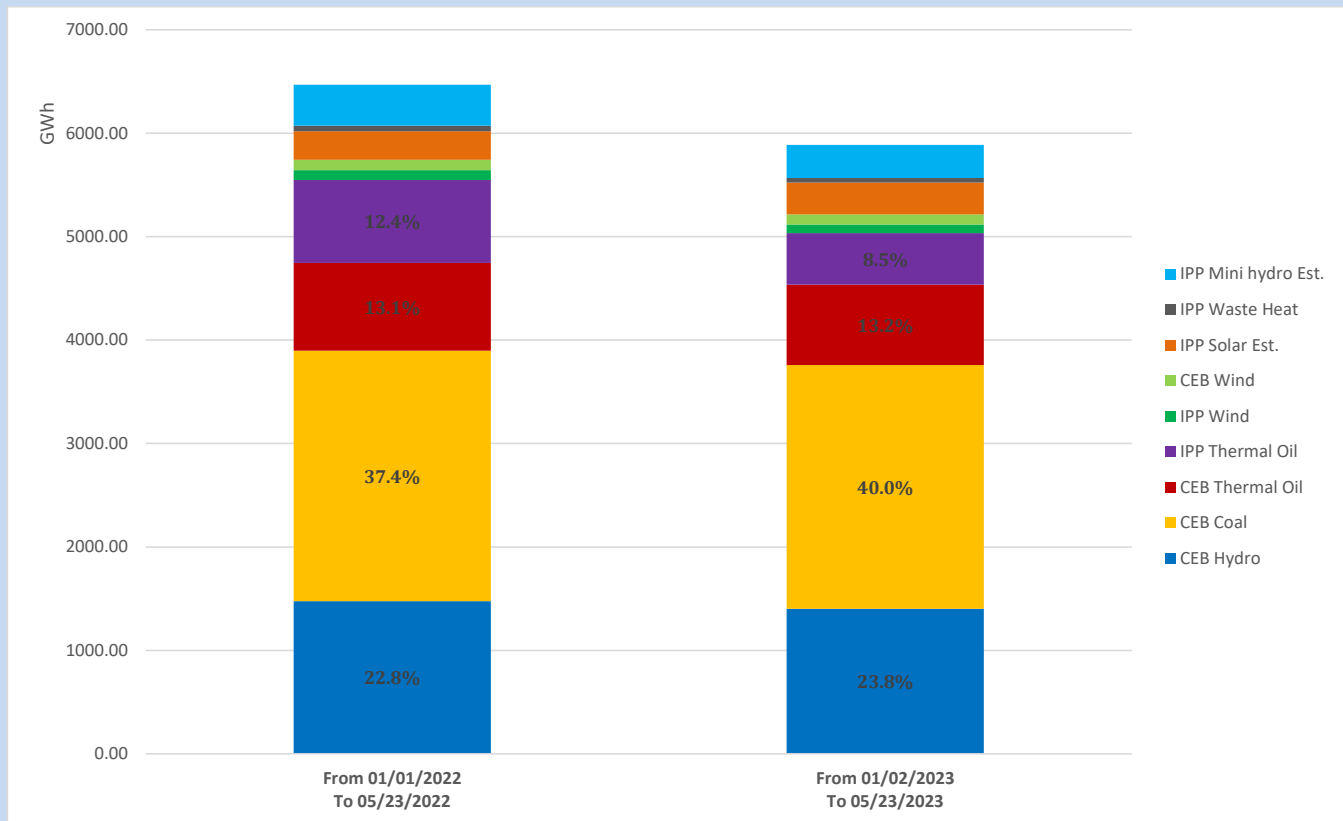
## Solar Generation during

May 23, 2023

Based on Telemetered Power Stations only



## Cumulative Dispatch Comparison with Last Year



The above figures are including contribution from roof top solar, non telemetered solar and mini hydro plants

## Thermal Plant Fuel types

Power Station	Primary Fuel
CEB Thermal	
Sapugaskanda 1	Heavy Fuel
Sapugaskanda 2	Heavy Fuel
Kelanitissa Small Gas Turbines	Auto Diesel
GT 7 - Kelanitissa	Auto Diesel
Kelanitissa CCY	Naphtha or Diesel
Lakvijaya 1	Coal
Lakvijaya 2	Coal
Lakvijaya 3	Coal
Uthuru Janani	Heavy Fuel
Barge CEB	Heavy Fuel
KCCPS -2	Auto Diesel

Power Station	Primary Fuel
Private Thermal	
West Coast	Auto Diesel / Heavy Fuel

## Major Incidents reported during the day

May 23, 2023

- 1) LVPS Unit 01 synchronized at 11:30hrs and reached 224MW (net) at 14:14hrs.
- 2) Upper Kothmale Unit 2 resumed generation at 16:10hrs.
- 3) Sub L - Kerawalapitiya 220kV cable tripped while attempting to energize from Sub L side at 17:55hrs after completing the maintenance work due to the operation of distance protection. At the same time, Barge unit 02 & 03 tripped due to the operation of reverse power protection. Sub L - Kerawalapitiya 220kV cable restored at 5:39hrs (24.05.2023)
- 4) GT07 tripped at 18:31hrs rejecting 100MW from the system with the indication of "Discavity cooling air high temperature". GT07 made available at 22:00hrs.
- 5) Power Barge unit 02 & 03 resumed generation at 18:41 hrs & 18:32 hrs respectively.