

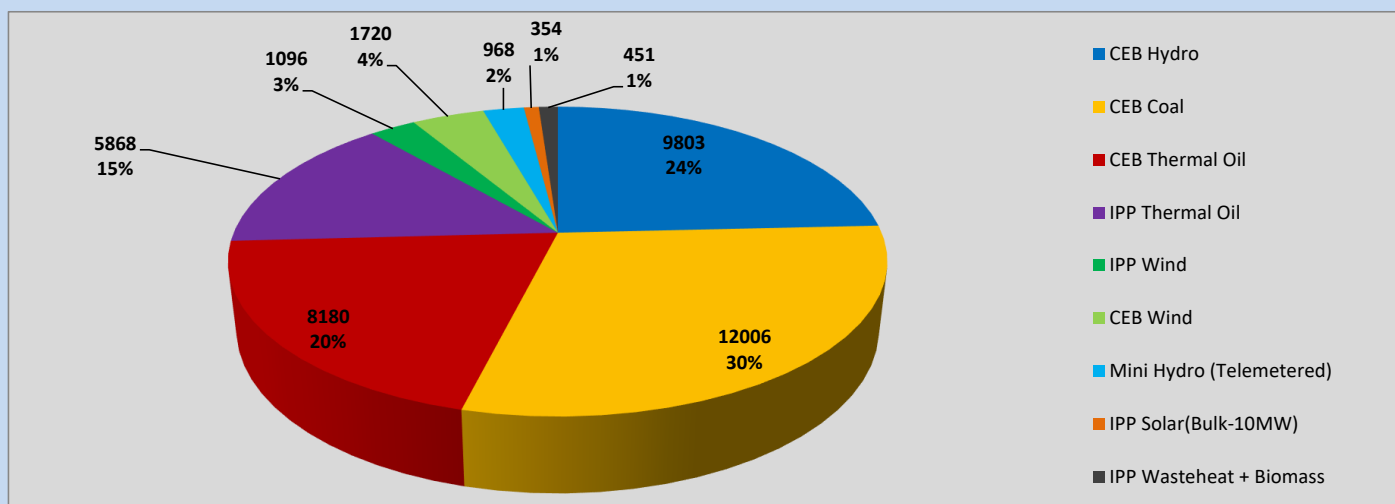
# Generation and Reservoirs Statistics

May 22, 2023



PUBLIC UTILITIES COMMISSION OF SRI LANKA

## Daily Generation Mix in MWh



Total Generation (Excluding estimated figures) =

40,446 MWh

### Estimated figures of CEB generation report

Estimated unserved energy = 0.00 GWh

Estimated Mini Hydro (Non telemetered) = 3022 MWh

Estimated IPP Solar PV (Bulk 1-10MW) = 304 MWh

Estimated Solar Roof Top PV = 1920 MWh

## Cumulative Dispatch

Following data excludes the contribution from roof top solar, non telemetered solar and mini hydro plants

### For Current Month

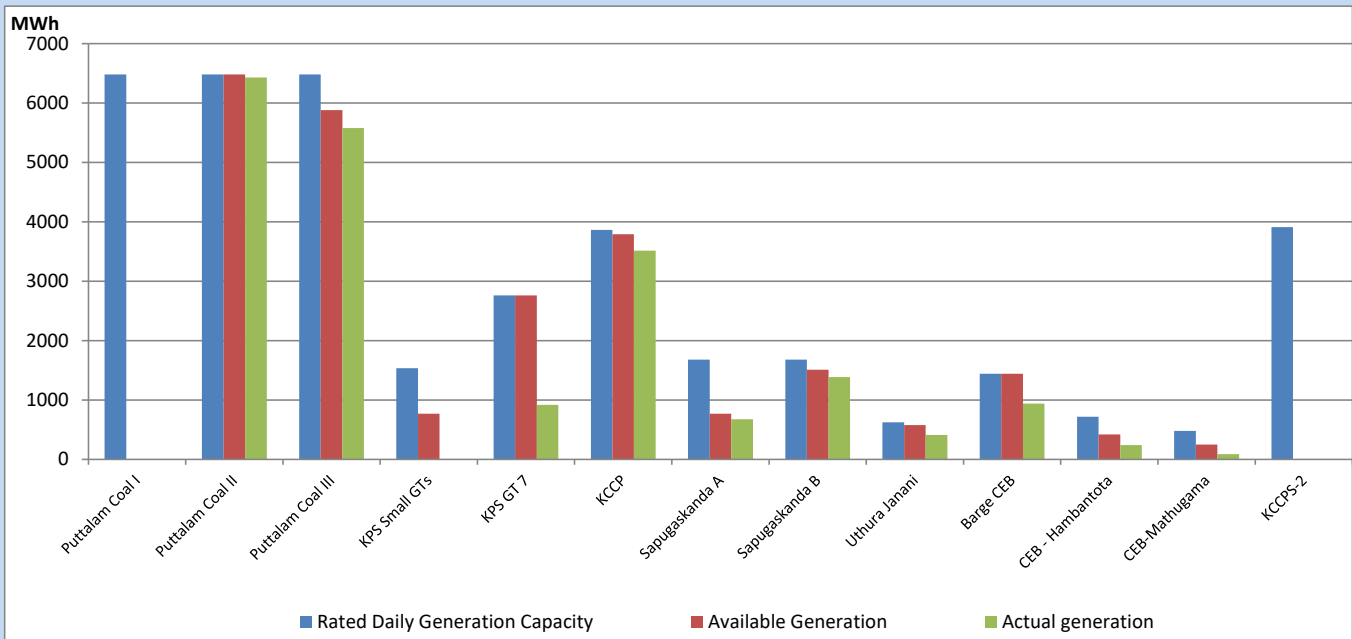
Category	Dispatch (GWh)	
CEB Hydro	194	23.49%
CEB Coal	356	43.06%
CEB Thermal Oil	114	13.84%
IPP Thermal	75	9.08%
SPP Wind	23	2.82%
CEB Wind	27	3.24%
Mini Hydro (Telemetered)	23	2.74%
IPP Solar (Bulk-10MW)	6	0.71%
IPP Wasteheat + BMP	8	1.00%
<b>Total</b>	<b>826</b>	

### For Current Year

Category	Dispatch (GWh)	
CEB Hydro	1,396	25.94%
CEB Coal	2,343	43.54%
CEB Thermal Oil	770	14.30%
IPP Thermal	493	9.15%
SPP Wind	81	1.51%
CEB Wind	97	1.80%
Mini Hydro (Telemetered)	118	2.19%
IPP Solar (Bulk-10MW)	40	0.75%
IPP Wasteheat	43	0.80%
<b>Total</b>	<b>5,380</b>	

## CEB owned Thermal Plant Dispatch

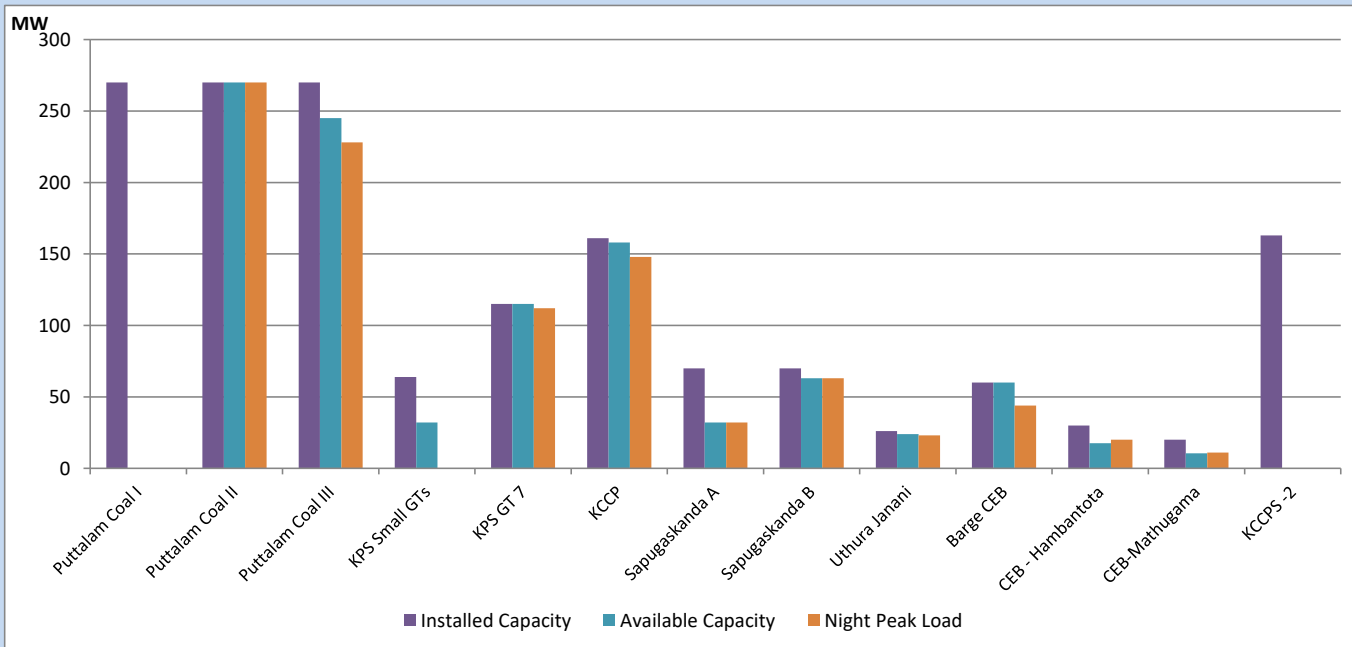
May 22, 2023



Available Generation is estimated based on plant availability at 6.00am on

May 23, 2023

## CEB owned Thermal Plant Loading at the Night Peak



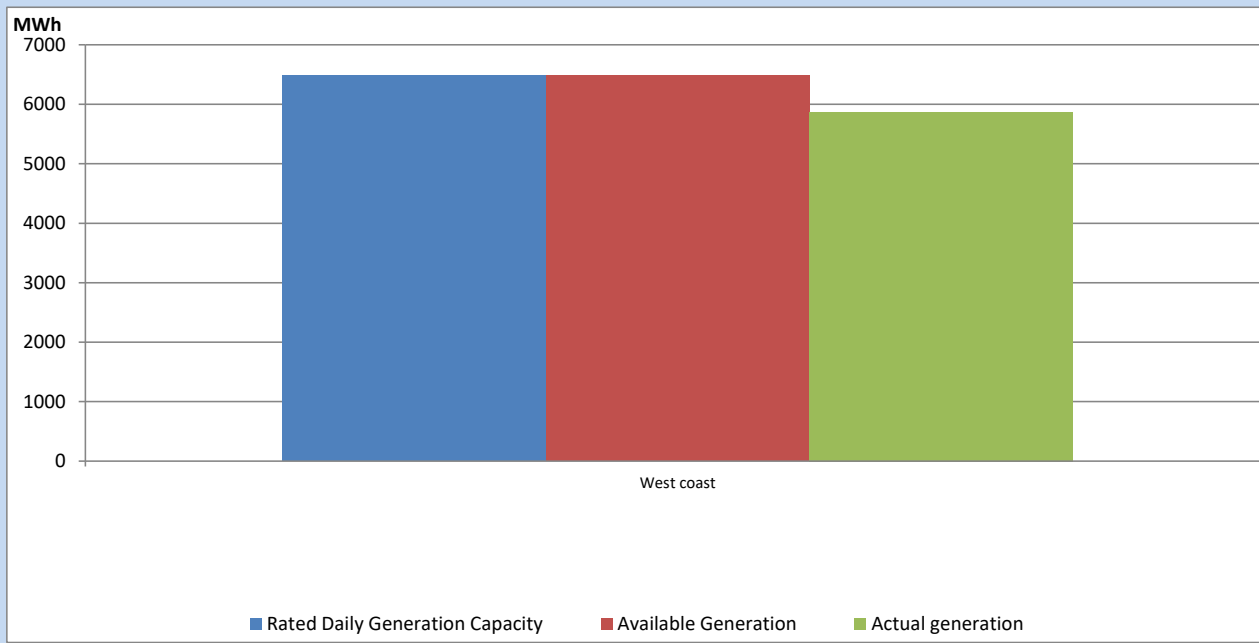
Note-

Plant availability is recorded at 6.00 am on

May 23, 2023

## IPP owned Thermal Plant Dispatch

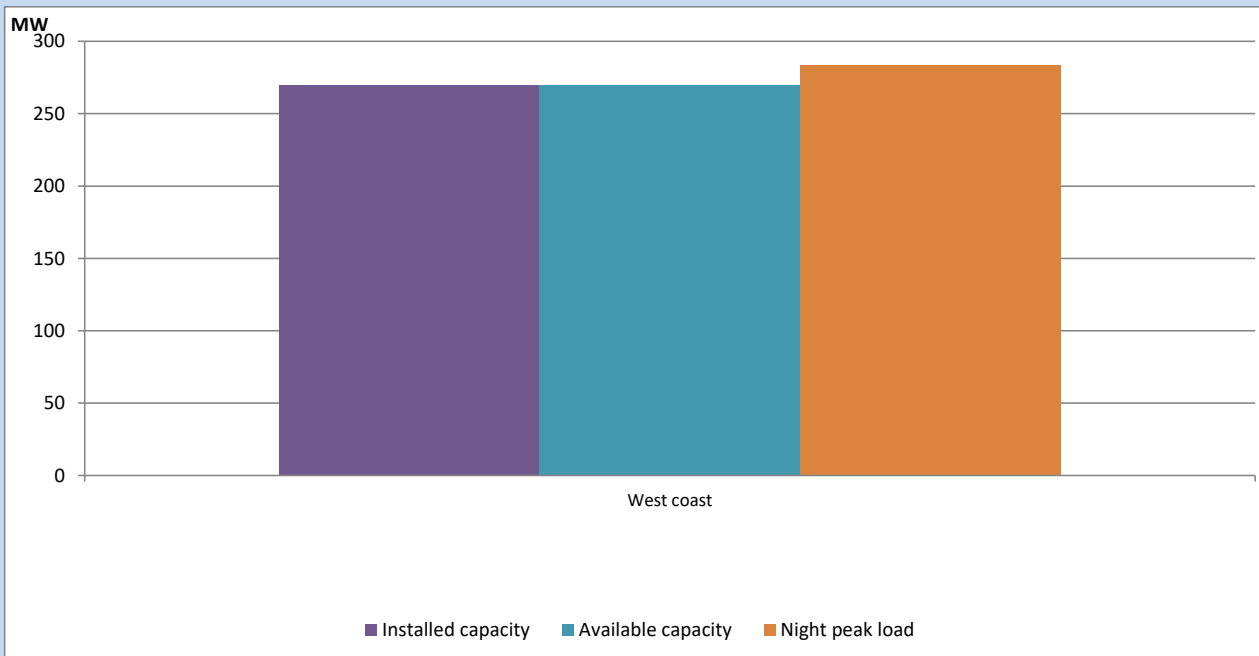
May 22, 2023



Available Generation is estimated based on plant availability at 6.00am on

May 23, 2023

## IPP owned Thermal Plant Loading at the Night Peak

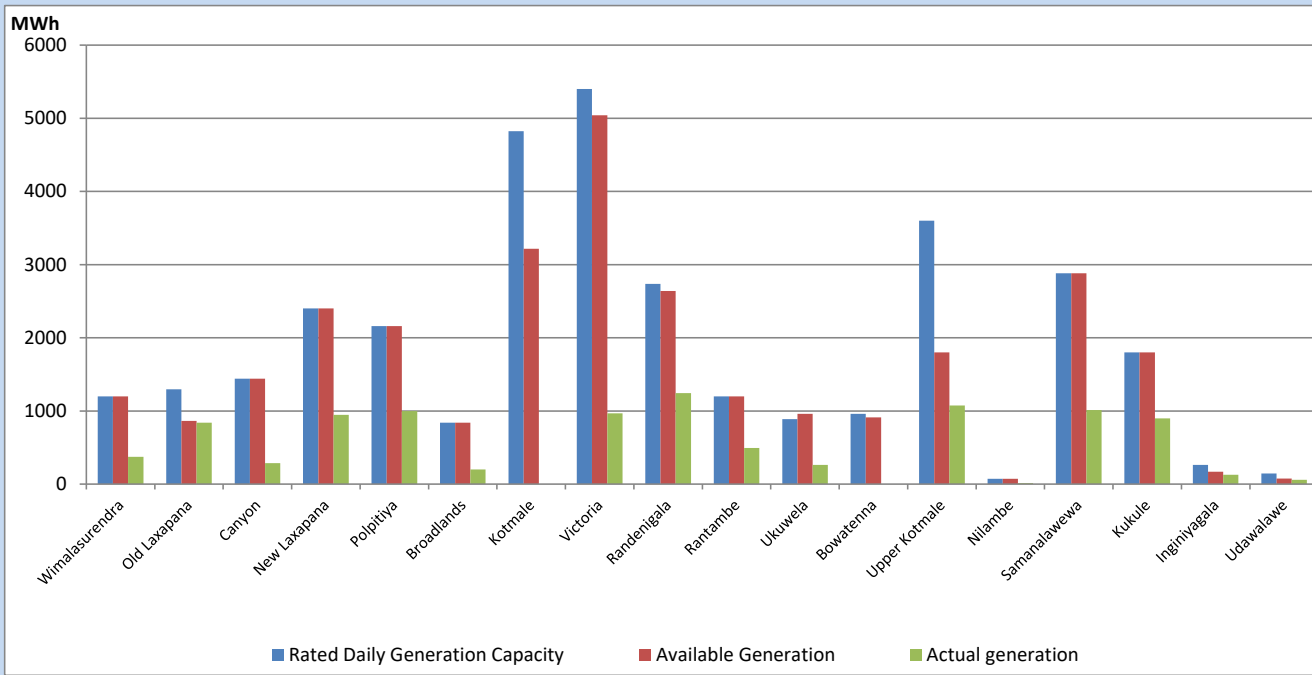


Note- Plant availability is recorded at 6.00 am on

May 23, 2023

## Major Hydro Plant Dispatch

May 22, 2023

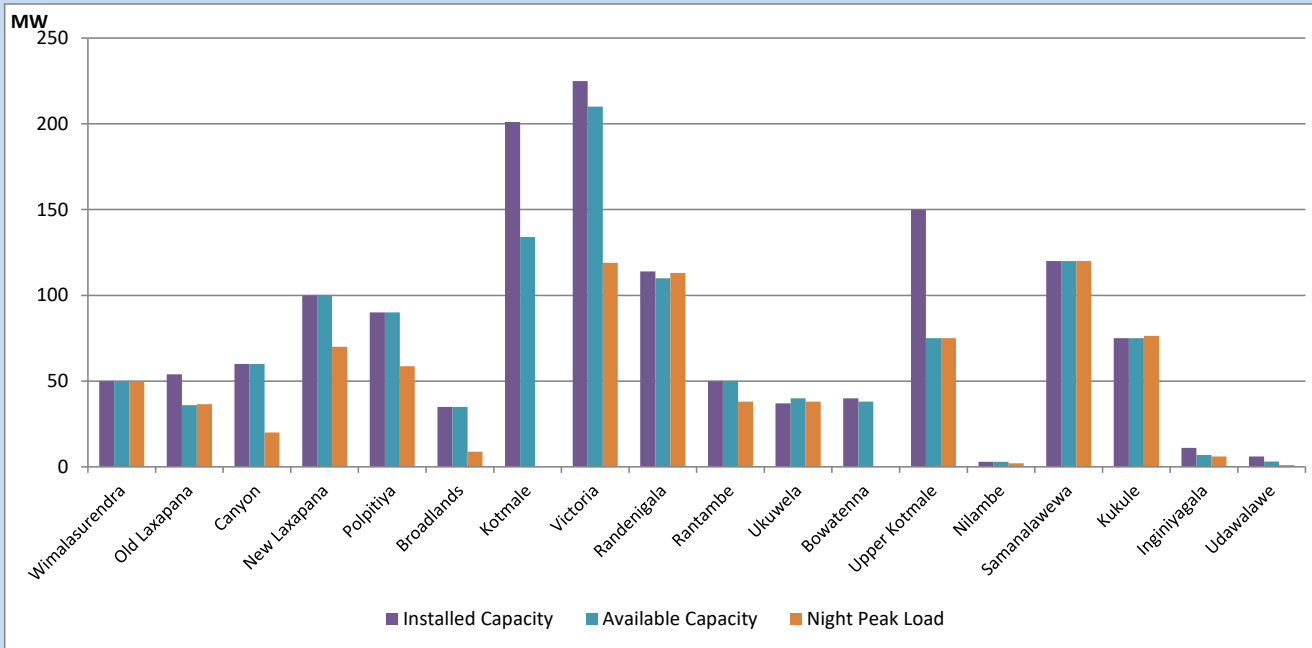


Available Generation is estimated based on plant availability at 6.00am on  
Broadlands power plant is operating in the Commissioning Stage

May 23, 2023

## Major Hydro Plant Loading at Night Peak

May 22, 2023



Note- Plant availability is recorded at 6.00 am on  
Broadlands power plant is operating in the Commissioning Stage

May 23, 2023

## Summary of Major Plant performance

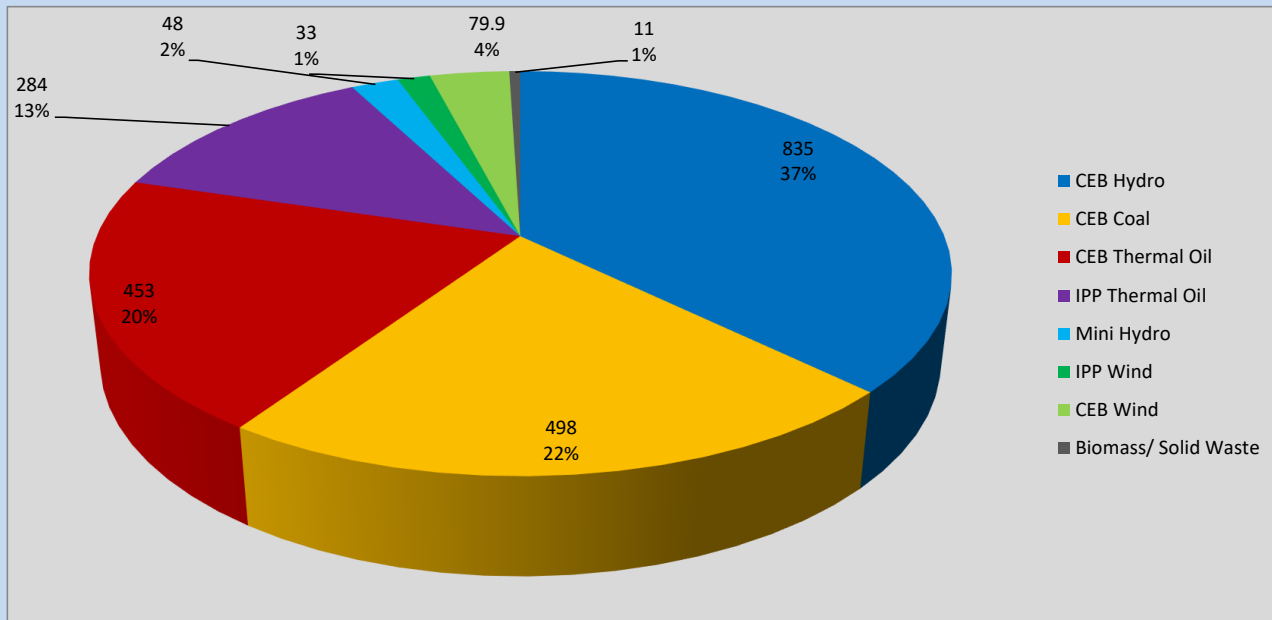
Plant	Installed Capacity	Plant Availability	Night peak Load	Plant Dispatch
	(MW)	(MW)	(MW)	(MWh)
Wimalasurendra	50	50	50	374
Old Laxapana	54	36	37	841
Canyon	60	60	20	287
New Laxapana	100	100	70	948
Polpitiya	90	90	59	1,000
Broadlands	35	35	9	201
Kotmale	201	134	0	0
Victoria	225	210	119	968
Randenigala	114	110	113	1,245
Rantambe	50	50	38	494
Ukuwela	37	40	38	261
Bowatenna	40	38	0	0
Upper Kotmale	150	75	75	1,075
Nilambe	3	3	2	13
Samanalawewa	120	120	120	1,011
Kukule	75	75	76	900
Inginiyagala	11	7	6	128
Udawalawe	6	3	1	57
Puttalam Coal I	270	0	0	0
Puttalam Coal II	270	270	270	6,428
Puttalam Coal III	270	245	228	5,578
KPS Small GTs	64	32	0	0
KPS GT 7	115	115	112	920
KCCP	161	158	148	3,516
Sapugaskanda A	70	32	32	674
Sapugaskanda B	70	63	63	1,388
Uthura Janani	26	24	23	414
Barge CEB	60	60	44	938
CEB-Hambantota	30	18	20	241
CEB-Mathugama	20	11	11	89
ACE Matara	24	0	0	0
Asia Power	50	0	0	0
KCCPS -2	163	0	0	0
West Coast	270	270	284	5,868
Nothern Power	36	0	0	0
ACE Embilipitiya	93	0	0	0
<b>Total</b>	<b>3,483</b>	<b>2,533</b>	<b>2,239</b>	<b>40,446</b>

Plant availability is the availability recorded at 6 am on

May 23, 2023

## Contribution to the Night Peak in MW

May 22, 2023

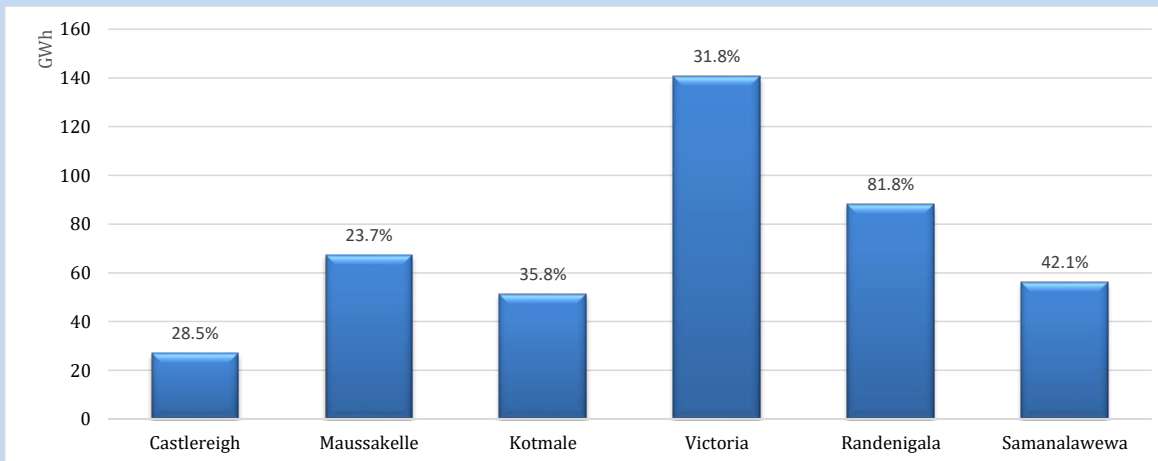


Night Peak*	2,241 MW
Day Peak Maximum Demand	1,958 MW
Day Peak Minimum Demand	1,663 MW
Off Peak Minimum Demand	1,140 MW

Above figures are excluding contribution from roof top solar, non telemetered solar and mini hydro plants

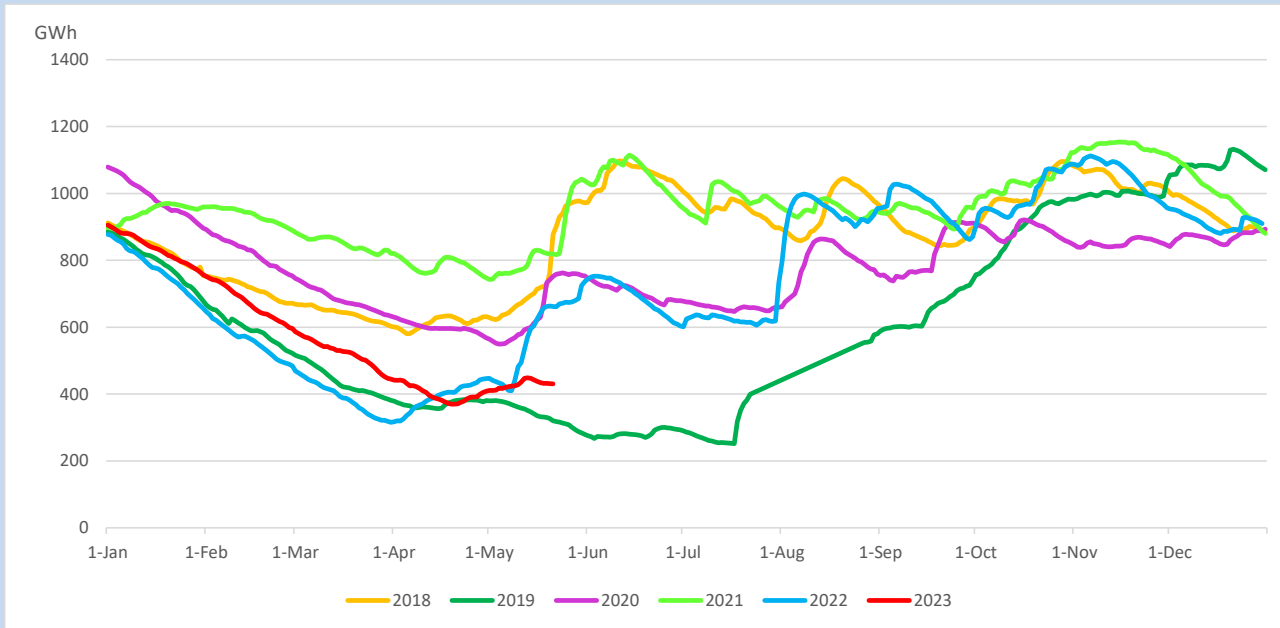
## Reservoir Levels -

as at 06.00 Hr on May 23, 2023

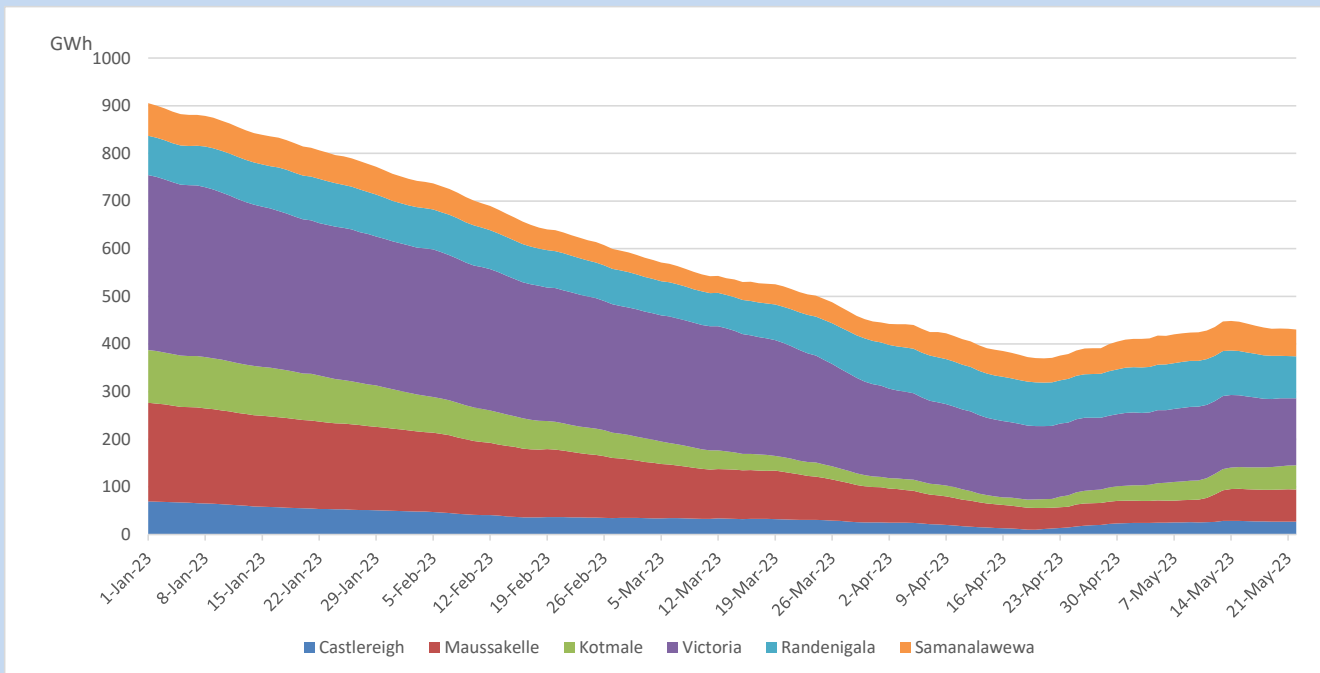


Total Reservoir Level	430.2 GWh
% of Total capacity	35.7%

## Comparison of Total Reservoir Storage Levels with Past Years

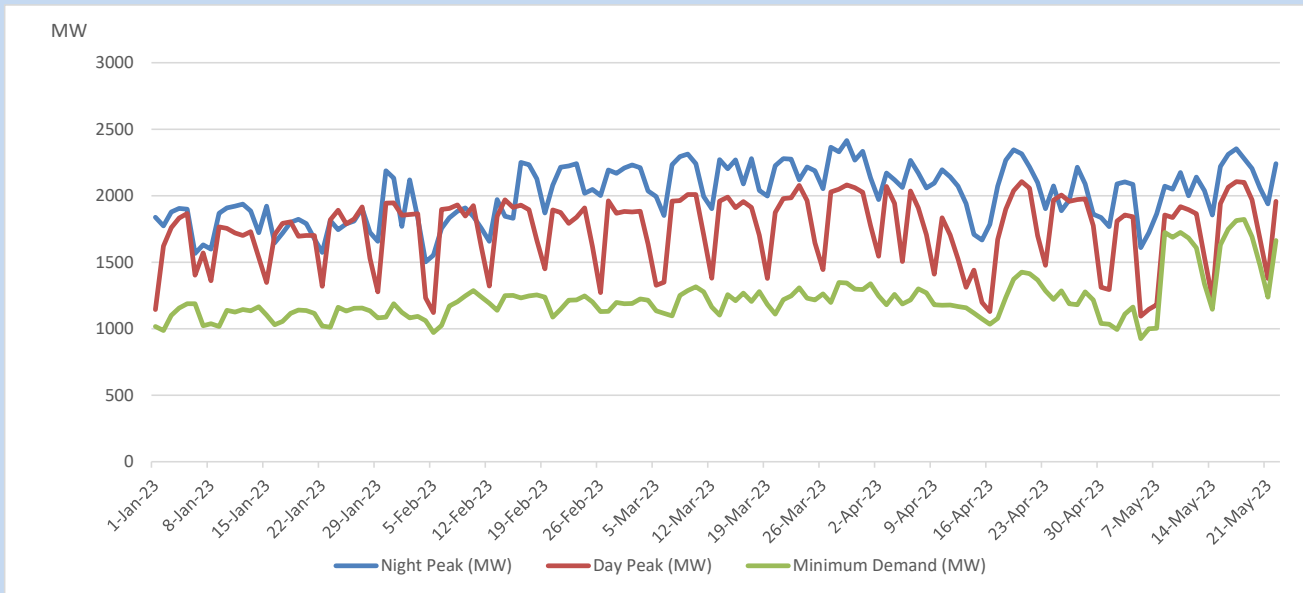


## Variation of Major Hydro Reservoir Levels in the current year (GWh)





## Variation of Demand during the current year

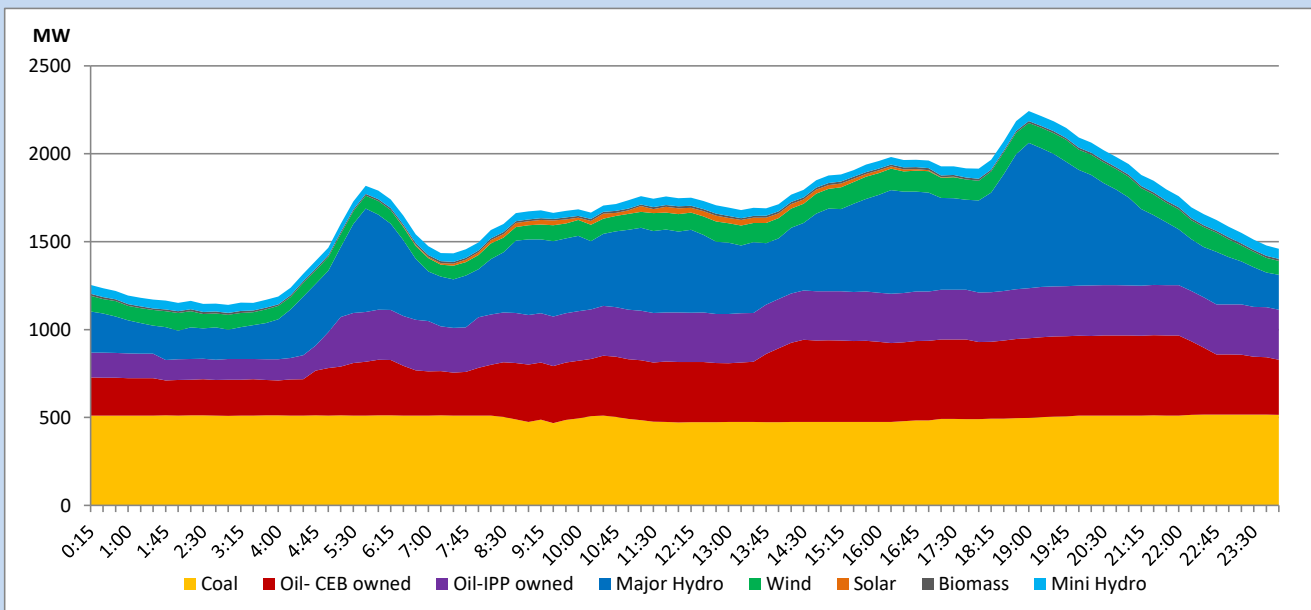


The above figures are excluding contribution from roof top solar, non telemetered solar and mini hydro plants

## Daily Load Curve

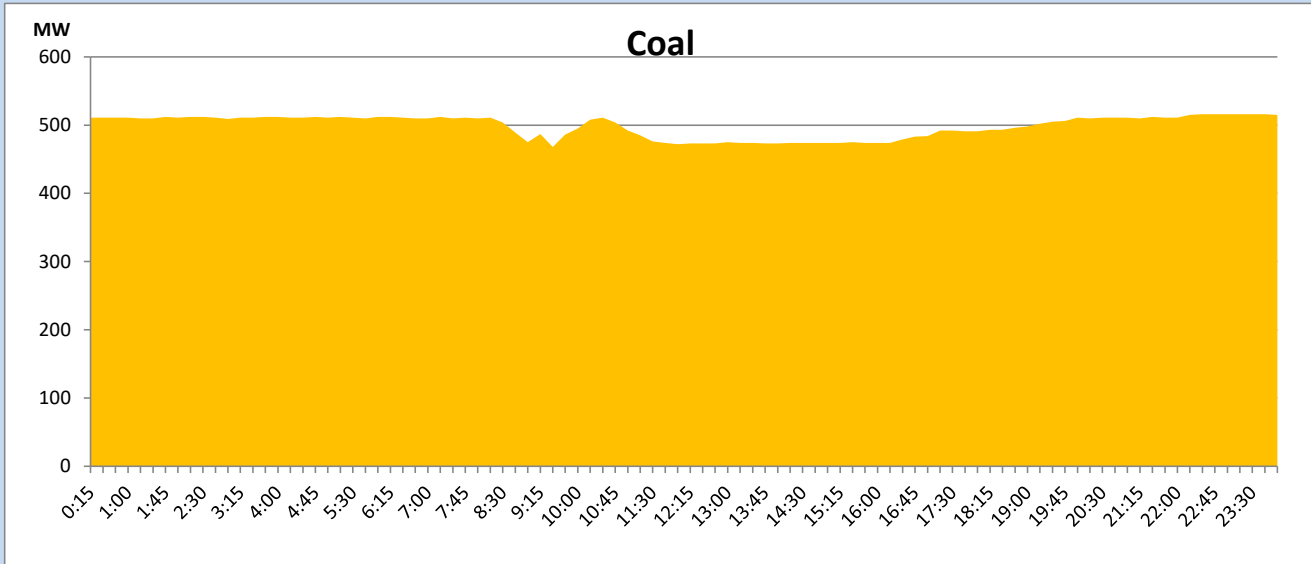
May 22, 2023

Solar and wind data is based on Telemetered Power Stations only



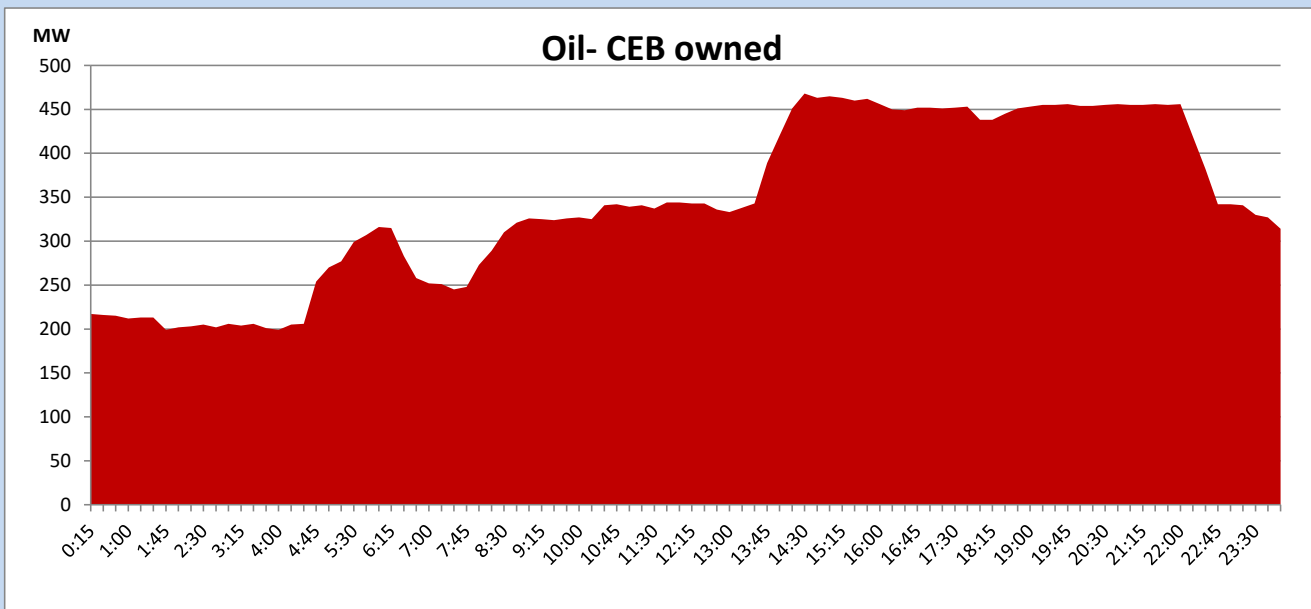
## Coal Generation during

May 22, 2023



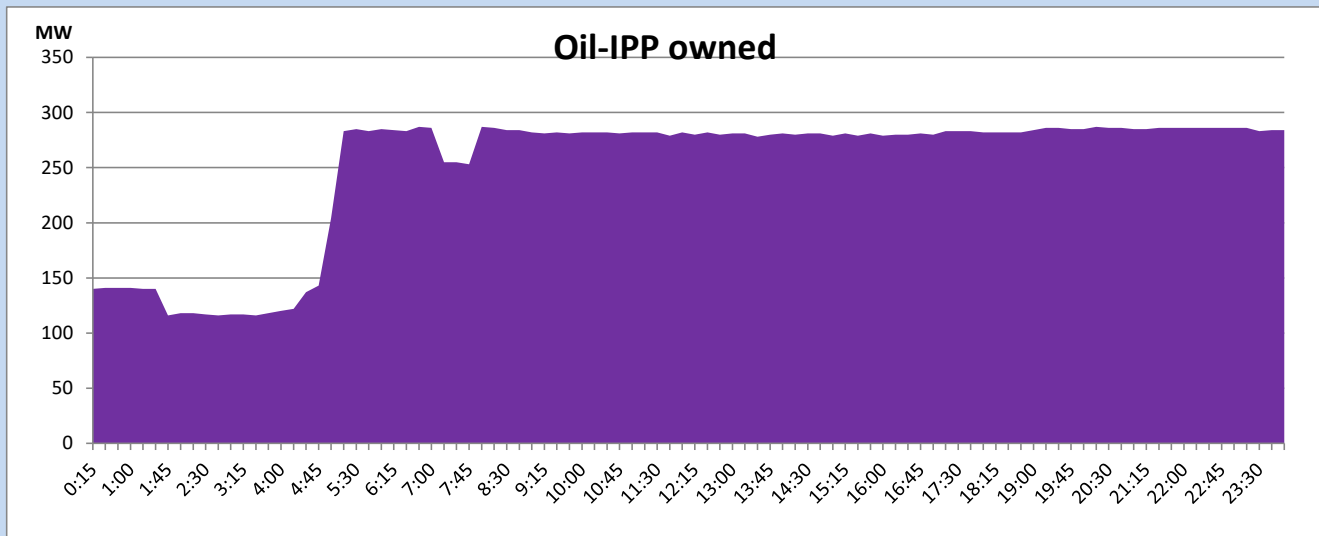
## CEB Oil Plant Generation during

May 22, 2023



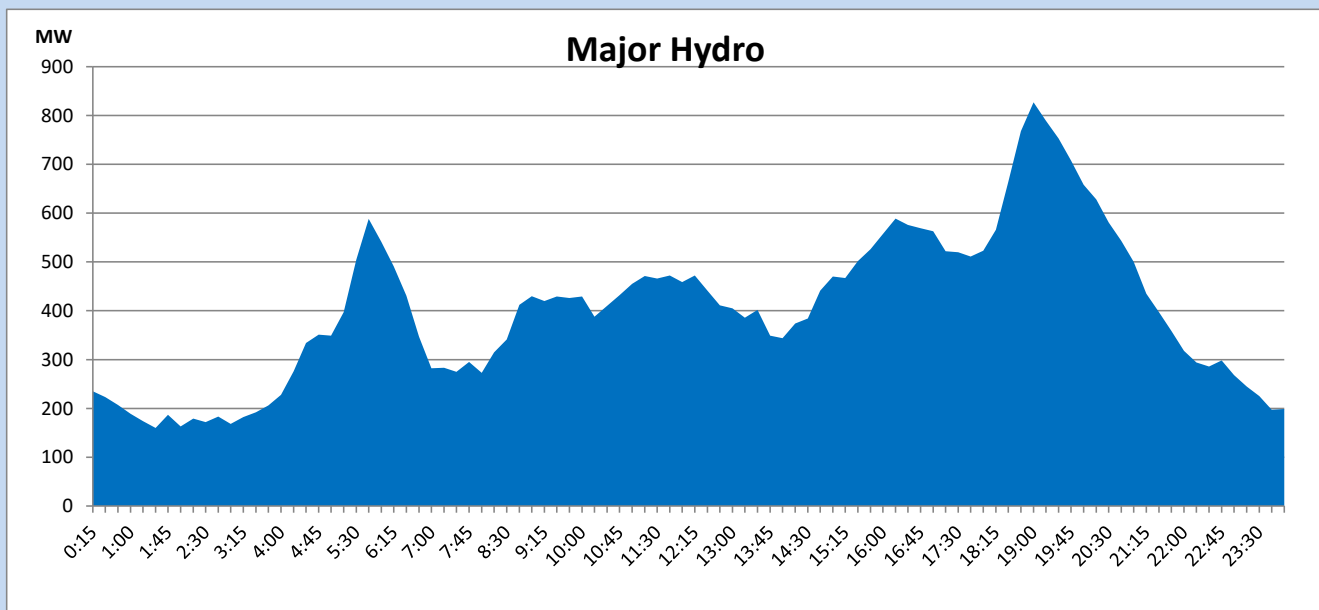
## IPP Oil Plant Generation during

May 22, 2023



## Major Hydro Generation during

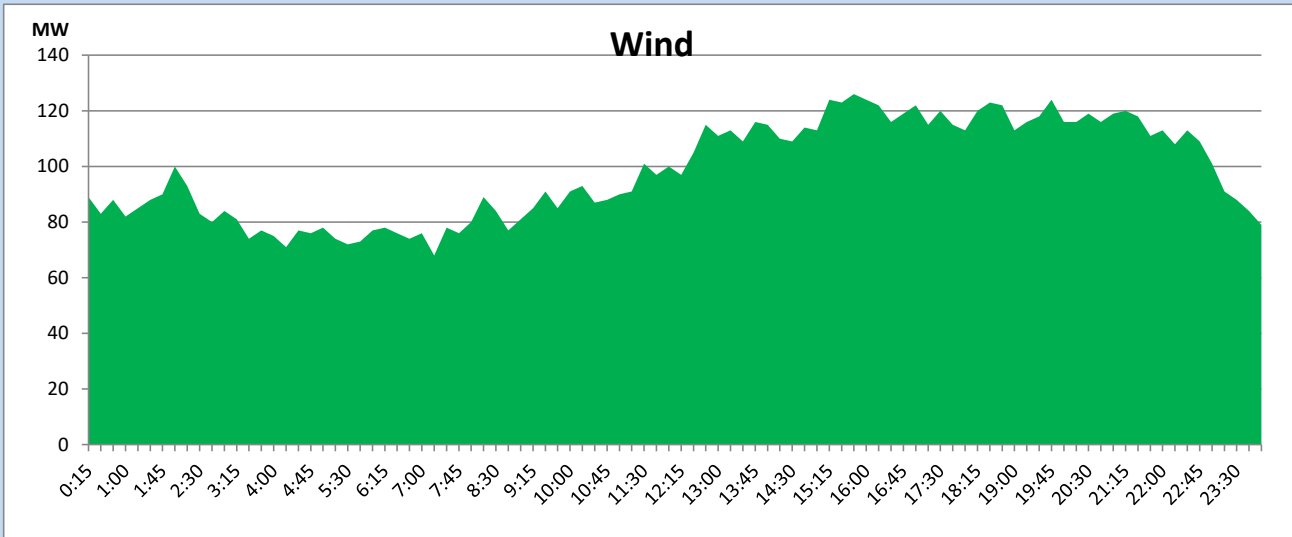
May 22, 2023



## Wind Generation during

May 22, 2023

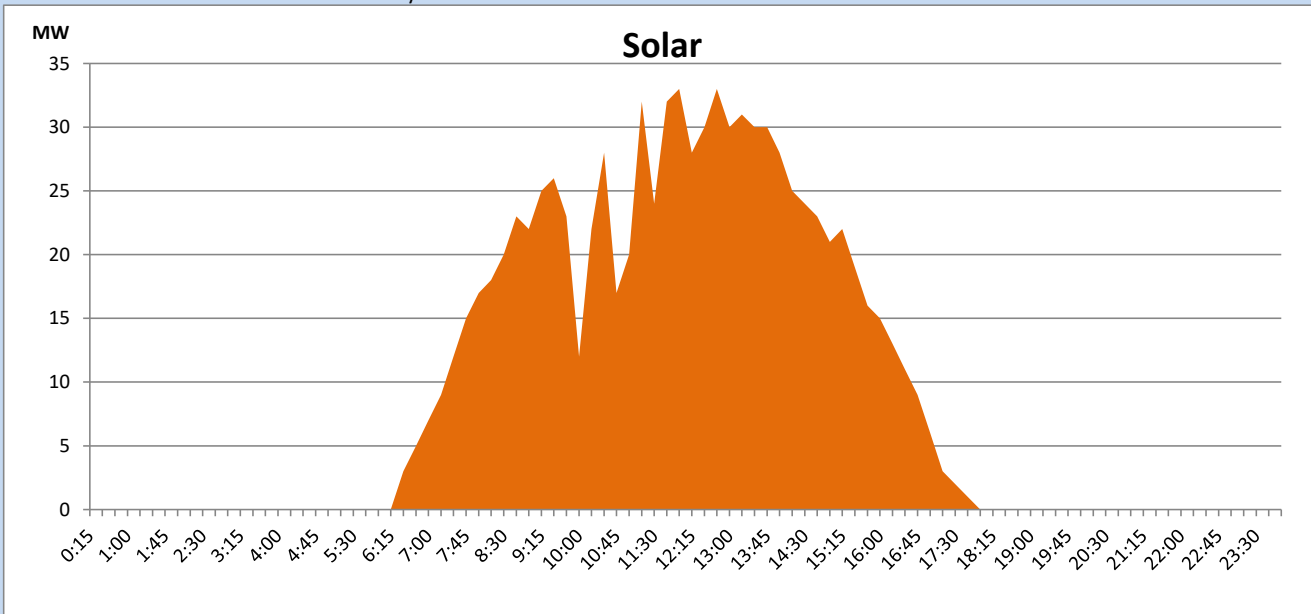
Based on Telemetered Power Stations only



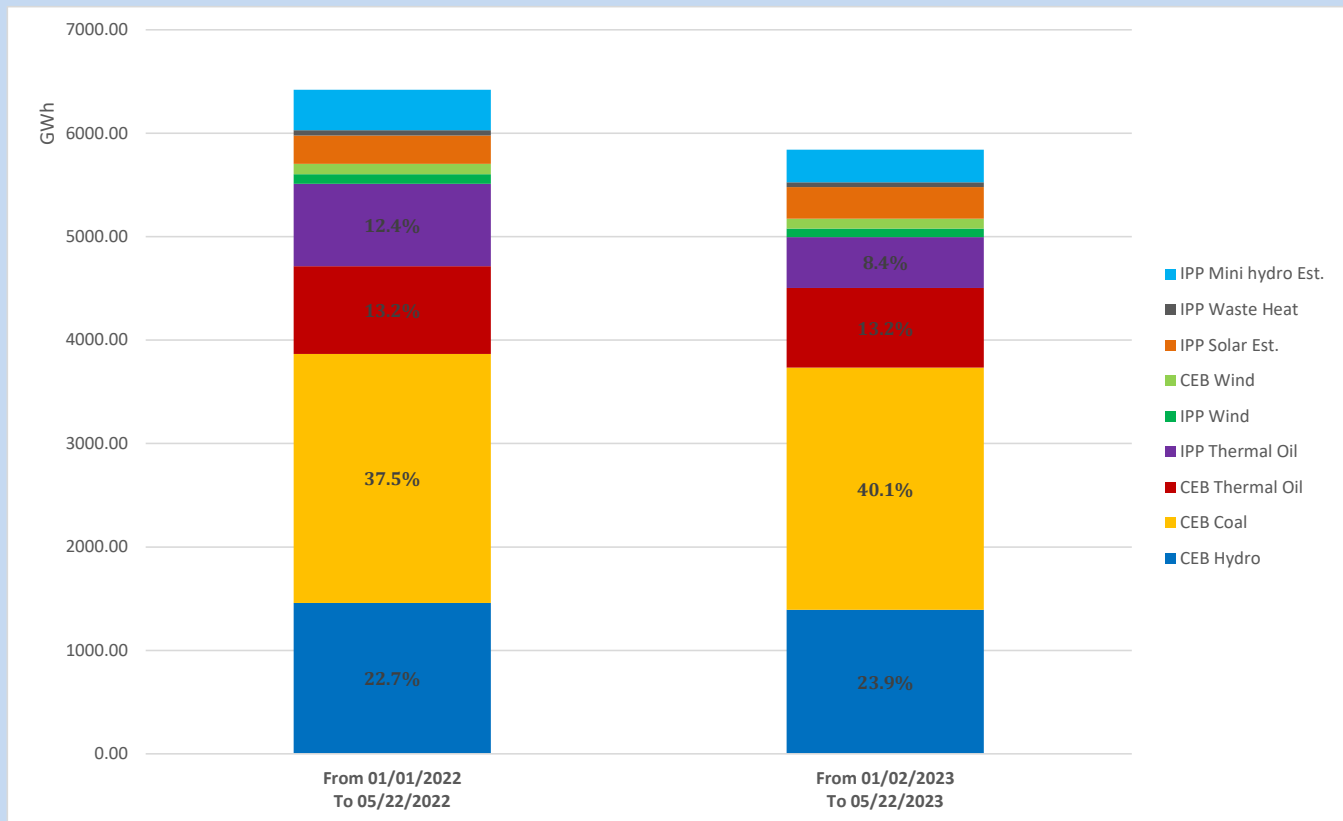
## Solar Generation during

May 22, 2023

Based on Telemetered Power Stations only



## Cumulative Dispatch Comparison with Last Year



The above figures are including contribution from roof top solar, non telemetered solar and mini hydro plants

## Thermal Plant Fuel types

Power Station	Primary Fuel
CEB Thermal	
Sapugaskanda 1	Heavy Fuel
Sapugaskanda 2	Heavy Fuel
Kelanitissa Small Gas Turbines	Auto Diesel
GT 7 - Kelanitissa	Auto Diesel
Kelanitissa CCY	Naphtha or Diesel
Lakvijaya 1	Coal
Lakvijaya 2	Coal
Lakvijaya 3	Coal
Uthuru Janani	Heavy Fuel
Barge CEB	Heavy Fuel
KCCPS -2	Auto Diesel

Power Station	Primary Fuel
Private Thermal	
West Coast	Auto Diesel / Heavy Fuel

## Major Incidents reported during the day

May 22, 2023

- 1) LVPS Unit 03 availability limited to 205MW(net) from 11:33hrs to 20.10hrs due to a boiler drum steam leak. The unit is yet to reach full load.
- 2) Upper Kothmale Unit 2 made forced shutdown at 09:21hrs due to the abnormal MW/MVAr variation. Upper Kothmale Unit 2 is yet to be resumed generation.
- 3) Power Barge availability limited to 45MW at 16:04hrs due to the liners failures in DG-01.