

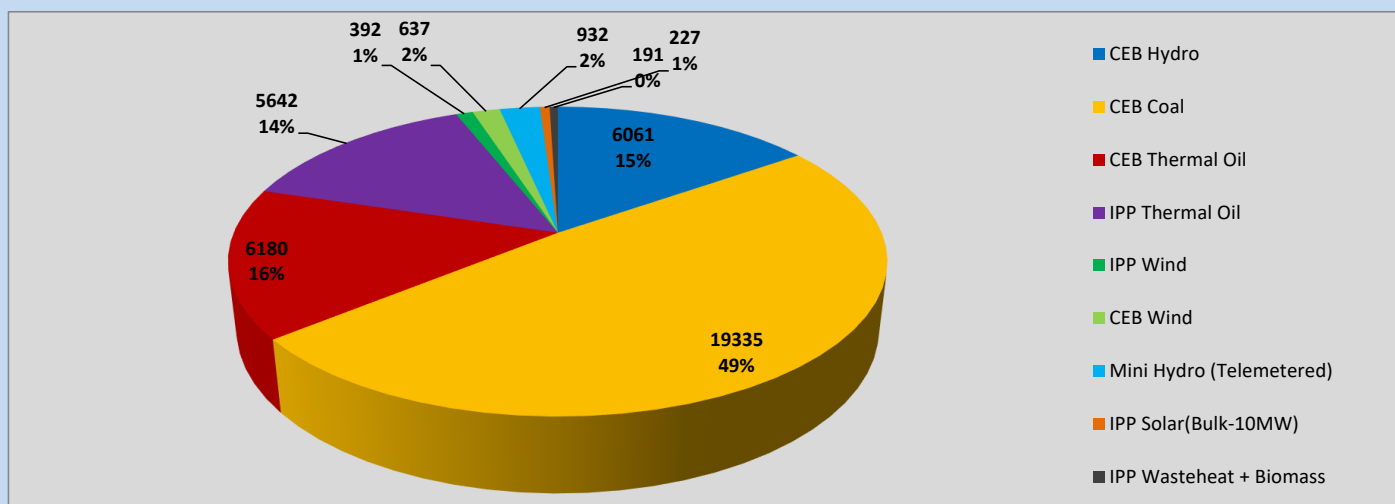
Generation and Reservoirs Statistics

April 22, 2023



PUBLIC UTILITIES COMMISSION OF SRI LANKA

Daily Generation Mix in MWh



Total Generation (Excluding estimated figures) =

39,597 MWh

Estimated figures of CEB generation report

Estimated unserved energy = 0.00 GWh

Estimated Mini Hydro (Non telemetered) = 1448 MWh

Estimated IPP Solar PV (Bulk 1-10MW) = 304 MWh

Estimated Solar Roof Top PV = 1640 MWh

Cumulative Dispatch

Following data excludes the contribution from roof top solar, non telemetered solar and mini hydro plants

For Current Month

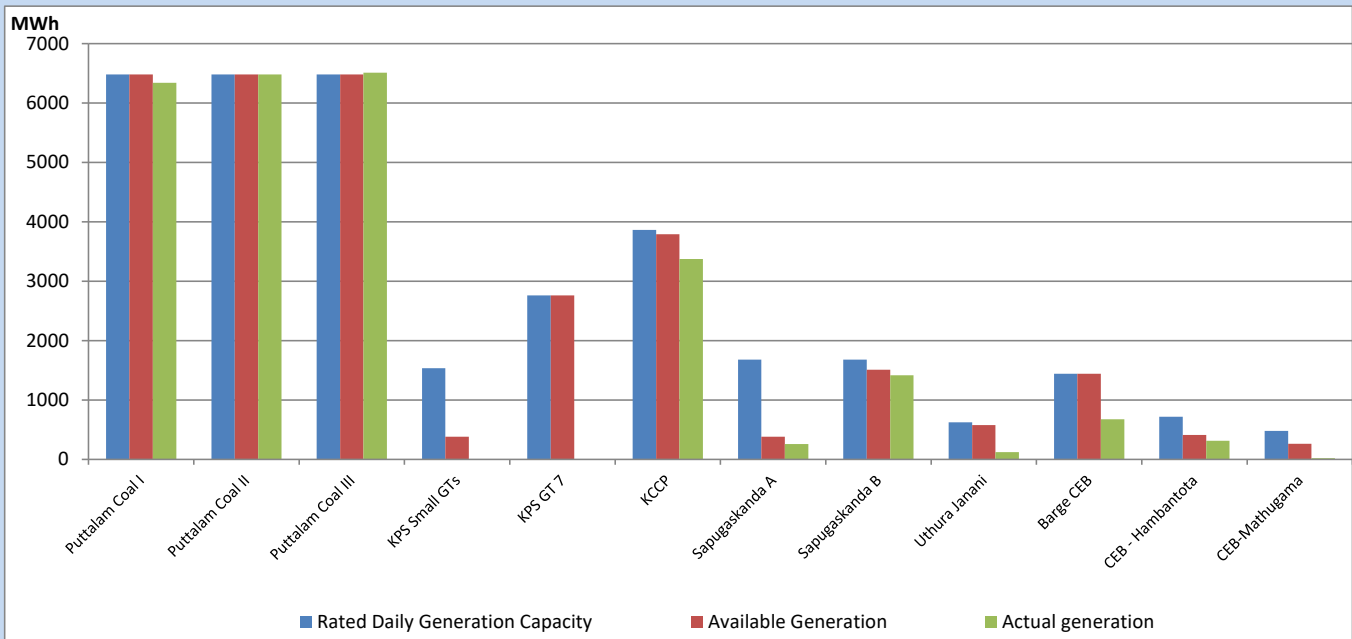
Category	Dispatch (GWh)	
CEB Hydro	230	27.60%
CEB Coal	311	37.39%
CEB Thermal Oil	130	15.57%
IPP Thermal	115	13.80%
SPP Wind	6	0.71%
CEB Wind	9	1.03%
Mini Hydro (Telemetered)	19	2.29%
IPP Solar (Bulk-10MW)	7	0.84%
IPP Wasteheat + BMP	6	0.77%
Total	832	

For Current Year

Category	Dispatch (GWh)	
CEB Hydro	1,151	27.09%
CEB Coal	1,834	43.17%
CEB Thermal Oil	600	14.12%
IPP Thermal	385	9.06%
SPP Wind	57	1.34%
CEB Wind	69	1.62%
Mini Hydro (Telemetered)	88	2.07%
IPP Solar (Bulk-10MW)	33	0.77%
IPP Wasteheat	33	0.77%
Total	4,248	

CEB owned Thermal Plant Dispatch

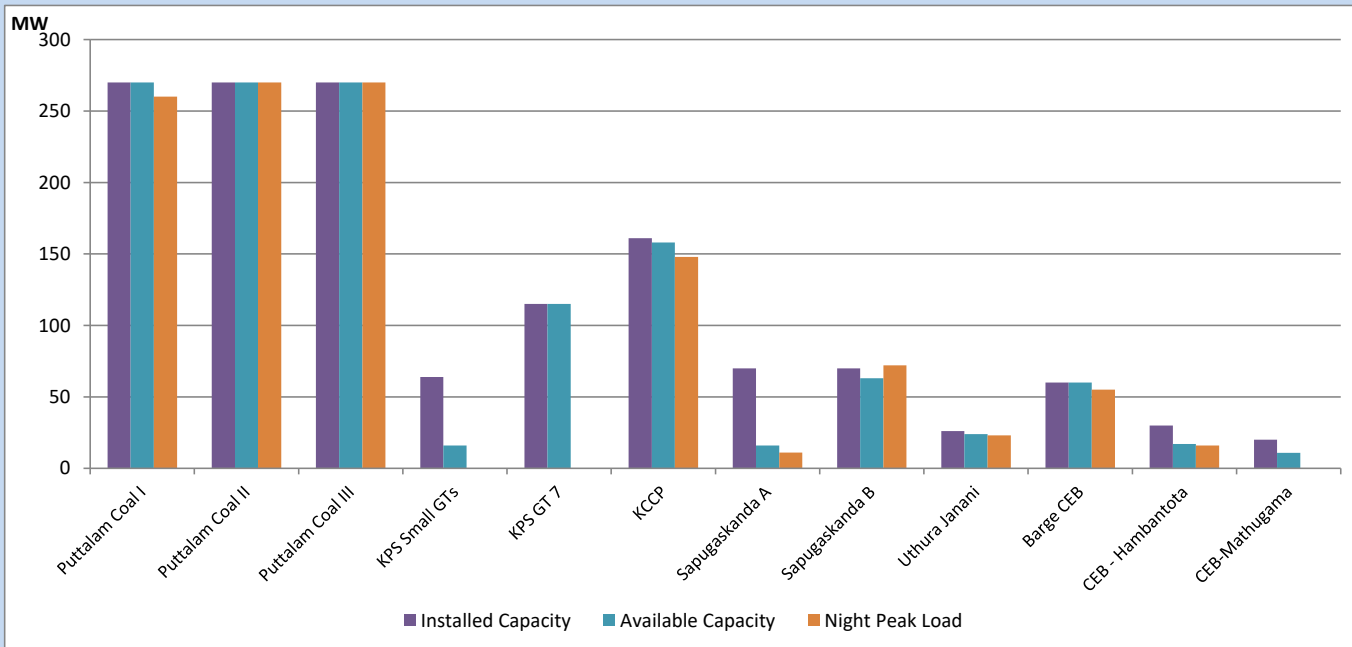
April 22, 2023



Available Generation is estimated based on plant availability at 6.00am on

April 23, 2023

CEB owned Thermal Plant Loading at the Night Peak

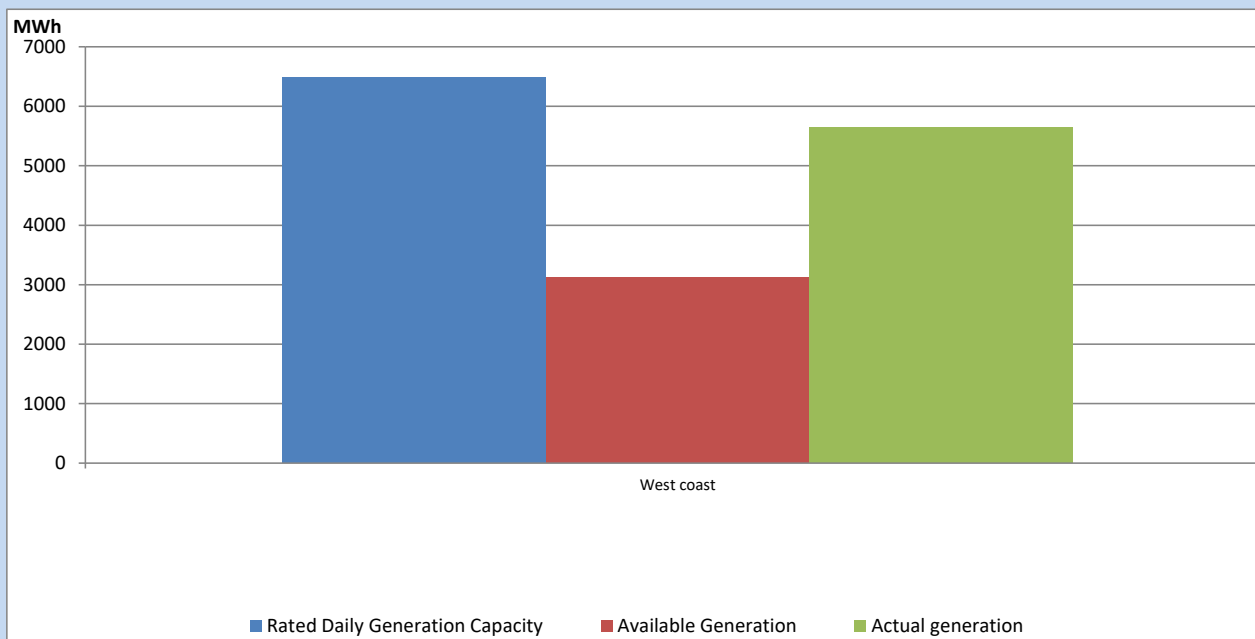


Note- Plant avilability is recorded at 6.00 am on

April 23, 2023

IPP owned Thermal Plant Dispatch

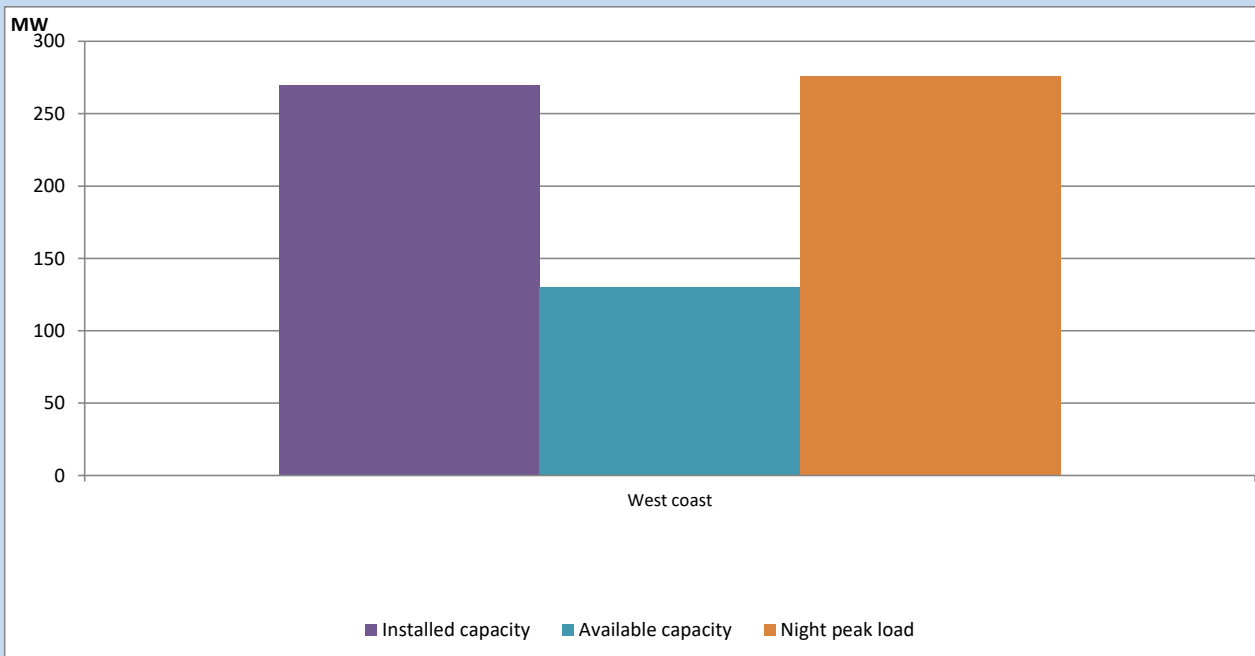
April 22, 2023



Available Generation is estimated based on plant availability at 6.00am on

April 23, 2023

IPP owned Thermal Plant Loading at the Night Peak

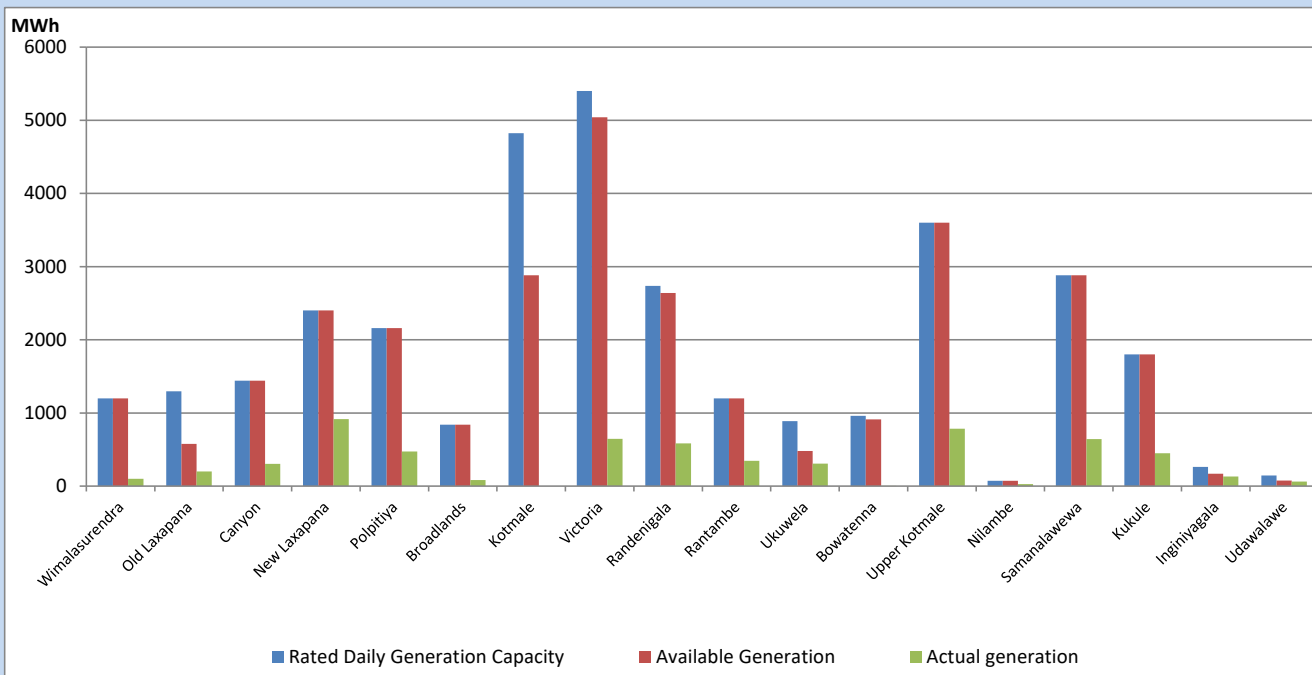


Note- Plant availability is recorded at 6.00 am on

April 23, 2023

Major Hydro Plant Dispatch

April 22, 2023

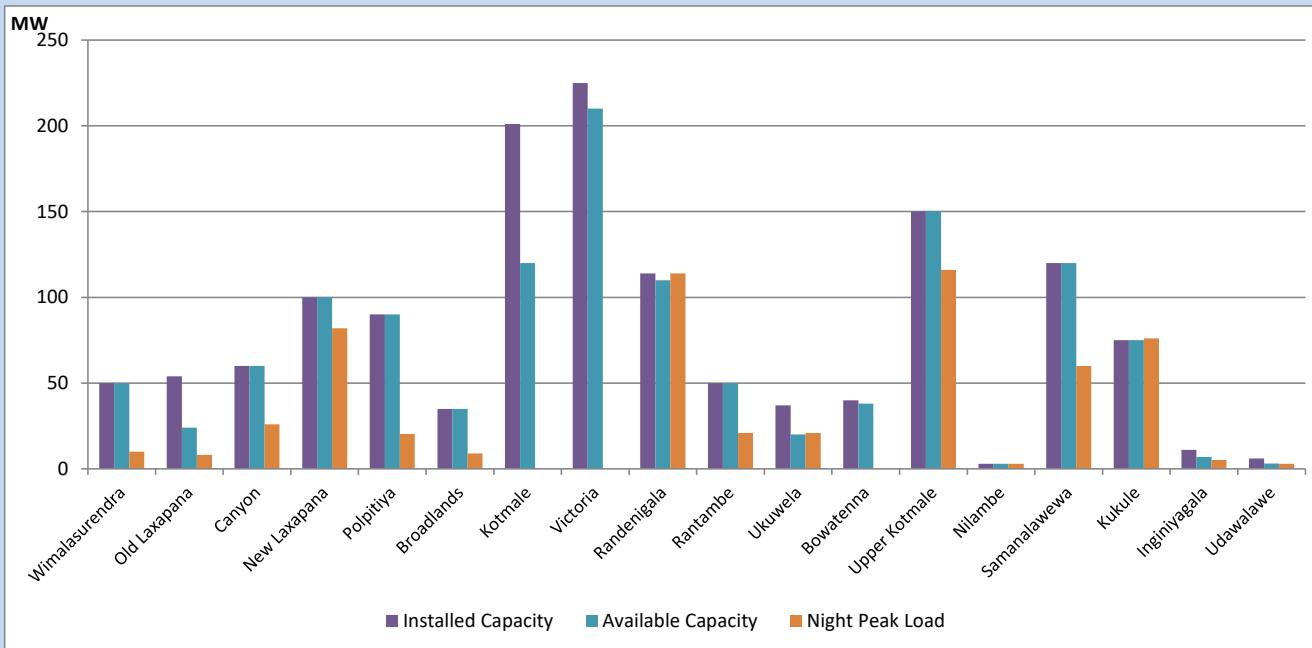


Available Generation is estimated based on plant availability at 6.00am on
Broadlands power plant is operating in the Commissioning Stage

April 23, 2023

Major Hydro Plant Loading at Night Peak

April 22, 2023



Note- Plant availability is recorded at 6.00 am on
Broadlands power plant is operating in the Commissioning Stage

April 23, 2023

Summary of Major Plant performance

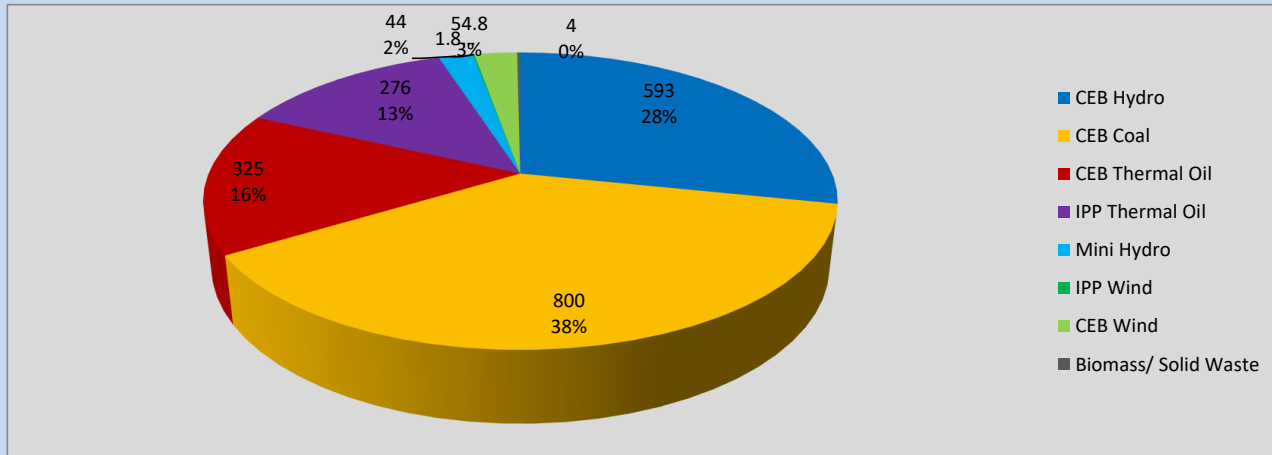
Plant	Installed Capacity	Plant Availability	Night peak Load	Plant Dispatch
	(MW)	(MW)	(MW)	(MWh)
Wimalasurendra	50	50	10	100
Old Laxapana	54	24	8	202
Canyon	60	60	26	304
New Laxapana	100	100	82	917
Polpitiya	90	90	20	474
Broadlands	35	35	9	82
Kotmale	201	120	0	0
Victoria	225	210	0	646
Randenigala	114	110	114	584
Rantambe	50	50	21	346
Ukuwela	37	20	21	307
Bowatenna	40	38	0	2
Upper Kotmale	150	150	116	785
Nilambe	3	3	3	27
Samanalawewa	120	120	60	643
Kukule	75	75	76	449
Inginiyagala	11	7	5	131
Udawalawe	6	3	3	62
Puttalam Coal I	270	270	260	6,340
Puttalam Coal II	270	270	270	6,482
Puttalam Coal III	270	270	270	6,513
KPS Small GTs	64	16	0	0
KPS GT 7	115	115	0	0
KCCP	161	158	148	3,375
Sapugaskanda A	70	16	11	258
Sapugaskanda B	70	63	72	1,416
Uthura Janani	26	24	23	123
Barge CEB	60	60	55	674
CEB-Hambantota	30	17	16	315
CEB-Mathugama	20	11	0	19
ACE Matara	24	0	0	0
Asia Power	50	0	0	0
Sojitz Kelanitissa	163	0	0	0
West Coast	270	130	276	5,642
Nothern Power	36	0	0	0
ACE Embilipitiya	93	0	0	0
Total	3,483	2,685	2,080	39,597

Plant availability is the availability recorded at 6 am on

April 23, 2023

Contribution to the Night Peak in MW

April 22, 2023

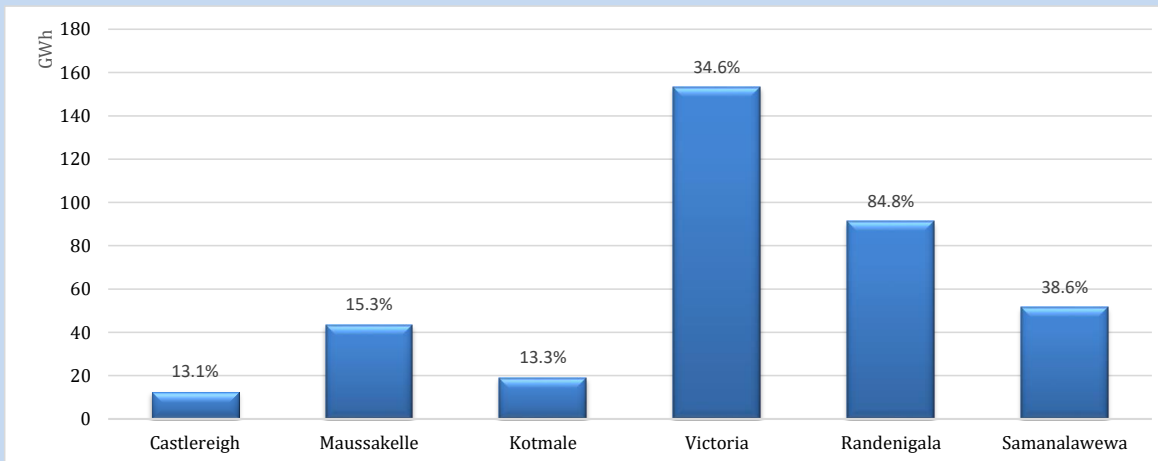


Night Peak*	2,098 MW
Day Peak	1,698 MW
Minimum Demand	1,366 MW

Above figures are excluding contribution from roof top solar, non telemetered solar and mini hydro plants

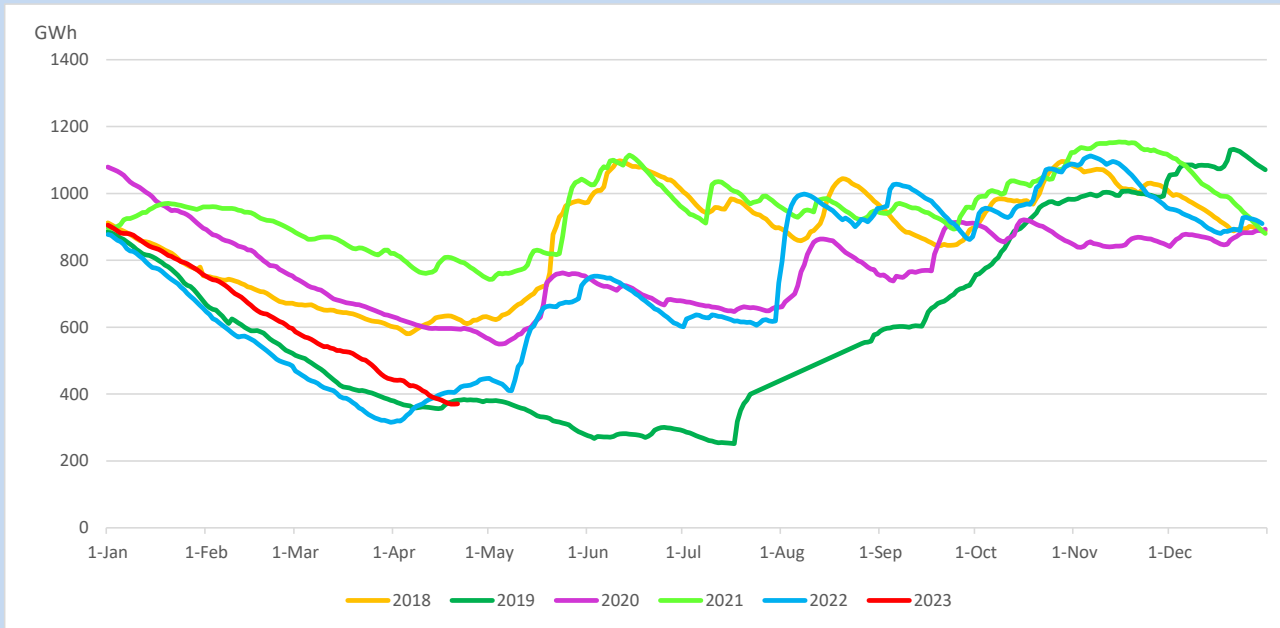
Reservoir Levels -

as at 06.00 Hr on April 23, 2023

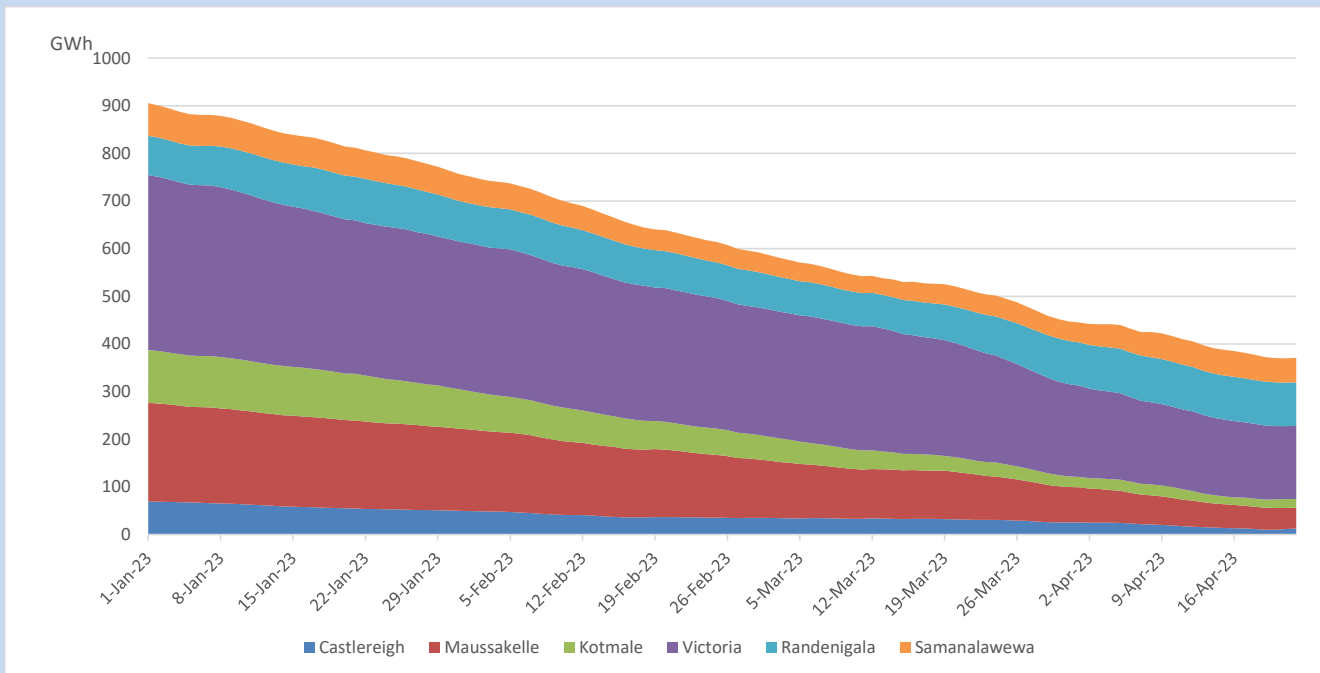


Total Reservoir Level	371 GWh
% of Total capacity	30.7%

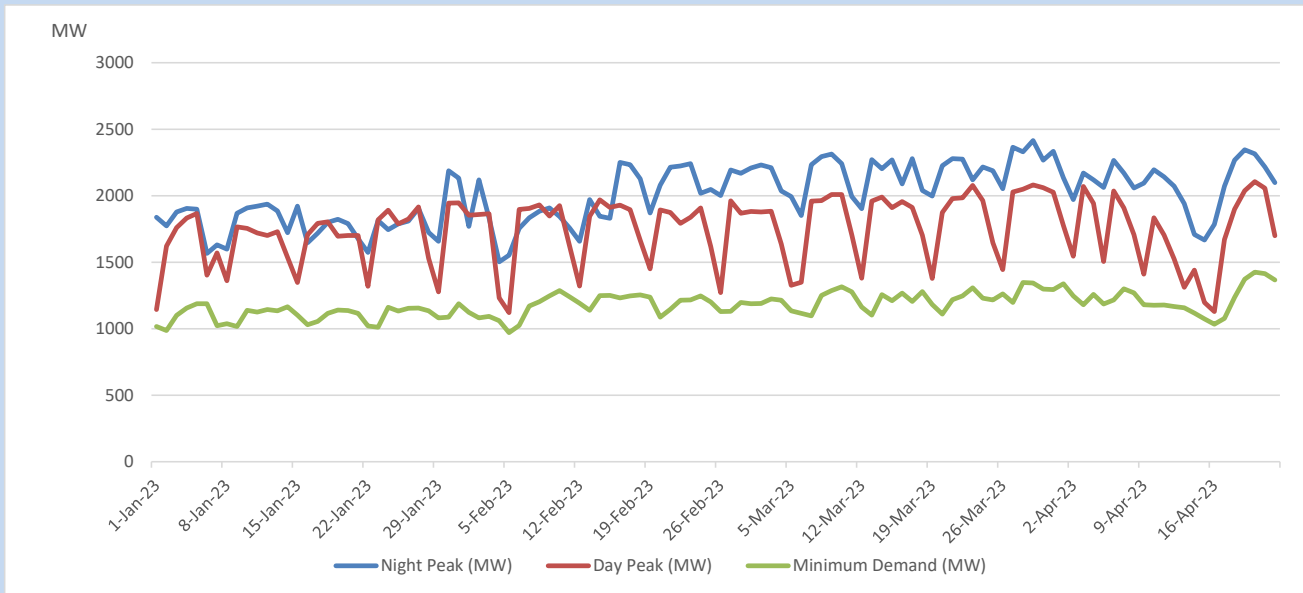
Comparison of Total Reservoir Storage Levels with Past Years



Variation of Major Hydro Reservoir Levels in the current year (GWh)



Variation of Demand during the current year

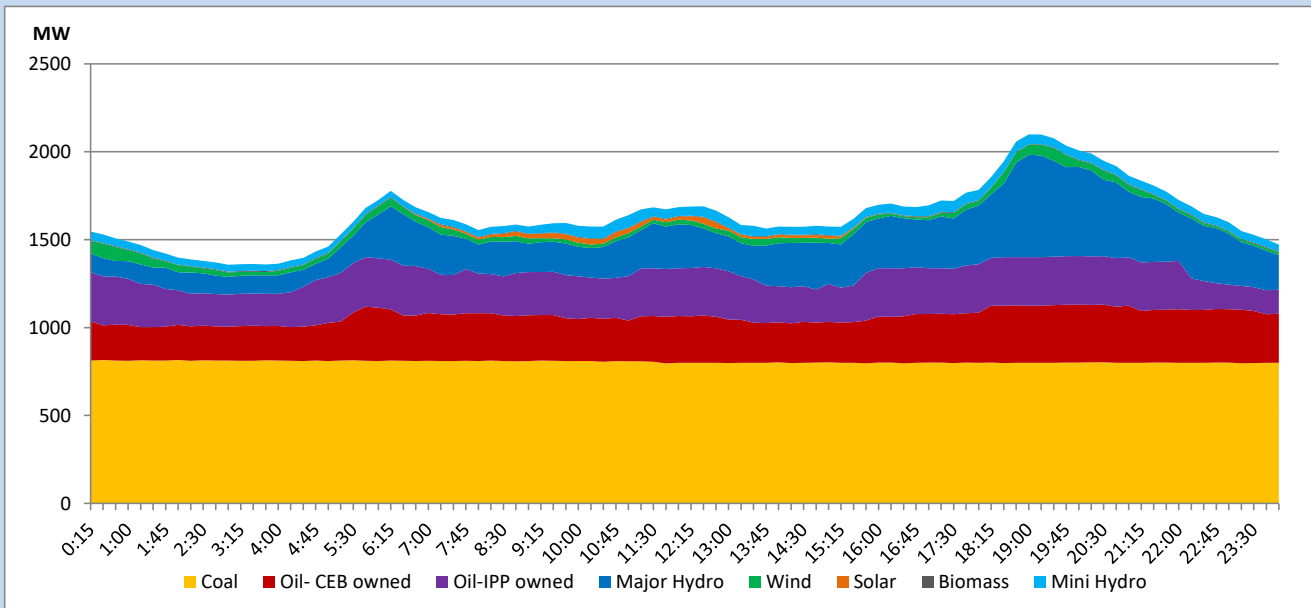


The above figures are excluding contribution from roof top solar, non telemetered solar and mini hydro plants

Daily Load Curve

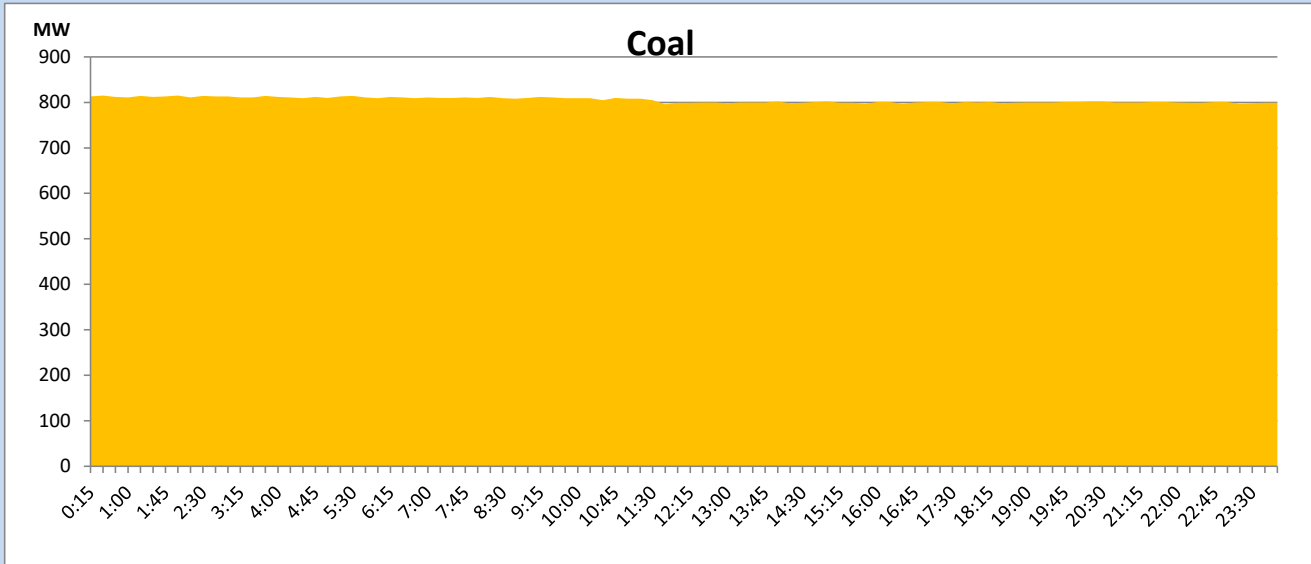
April 22, 2023

Solar and wind data is based on Telemetered Power Stations only



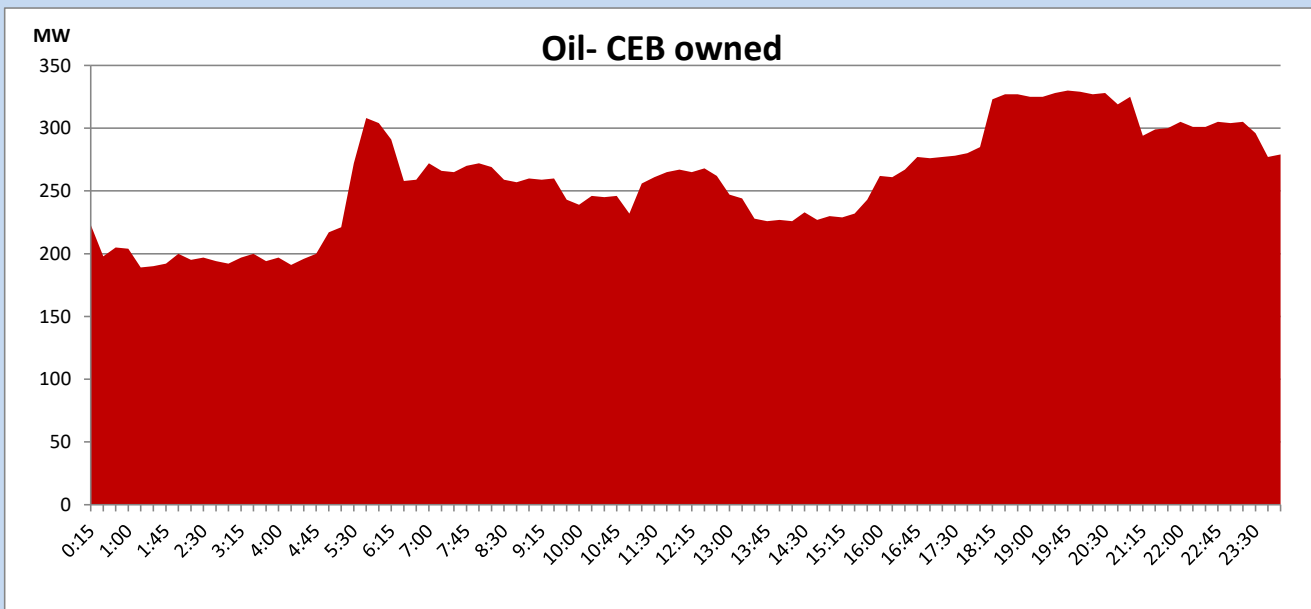
Coal Generation during

April 22, 2023



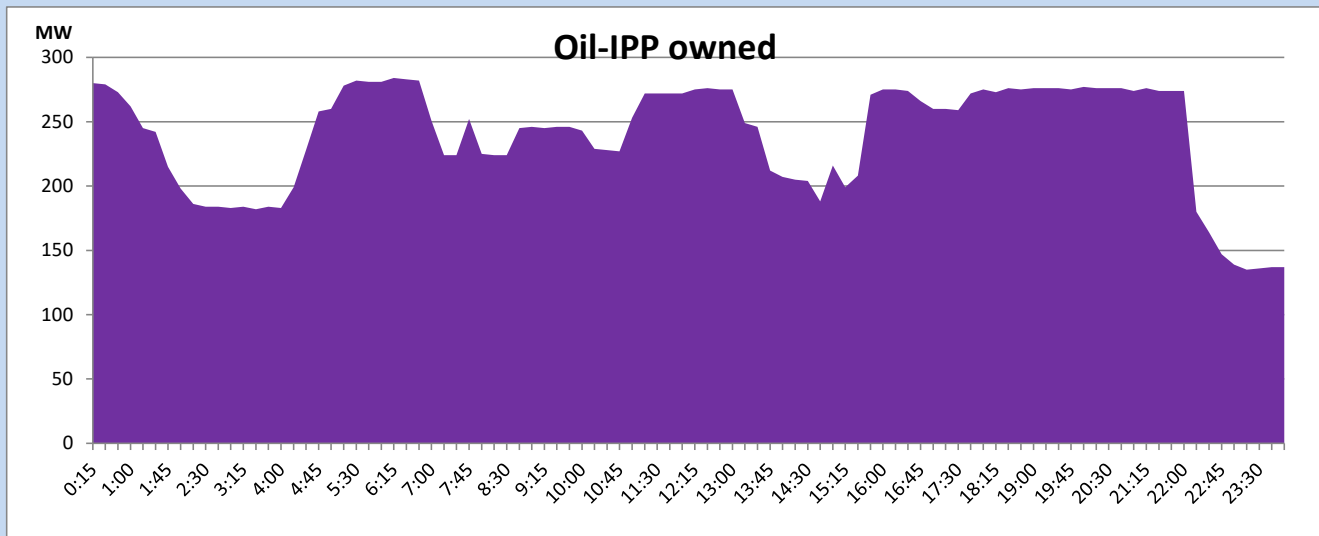
CEB Oil Plant Generation during

April 22, 2023



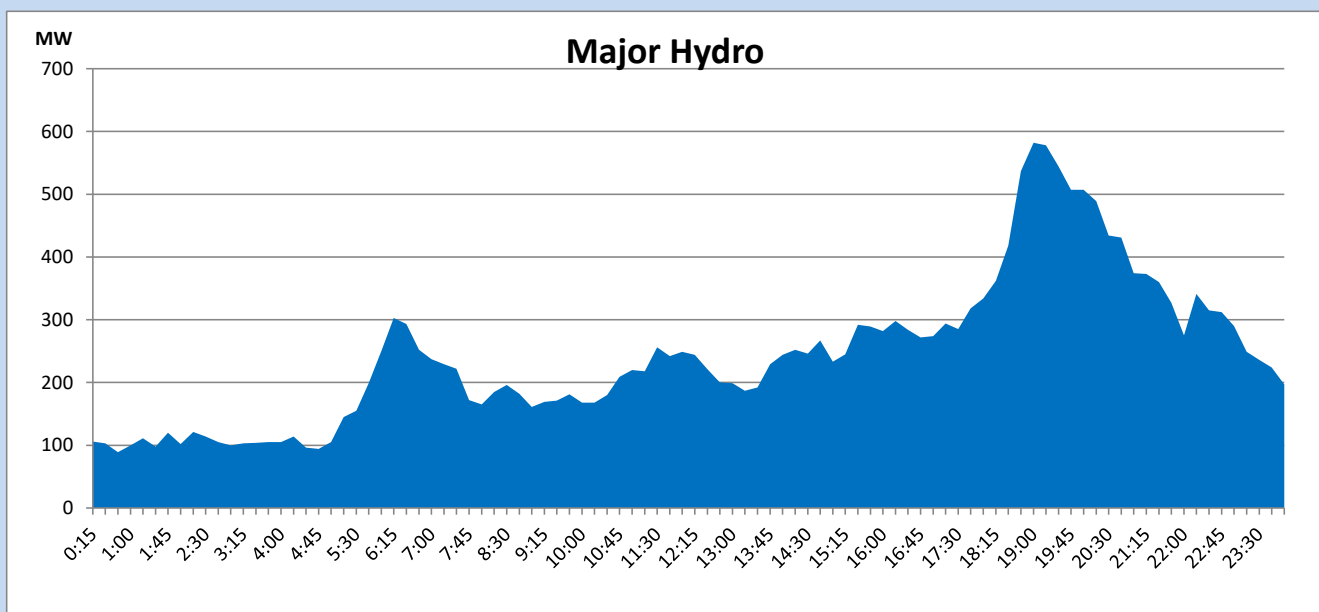
IPP Oil Plant Generation during

April 22, 2023



Major Hydro Generation during

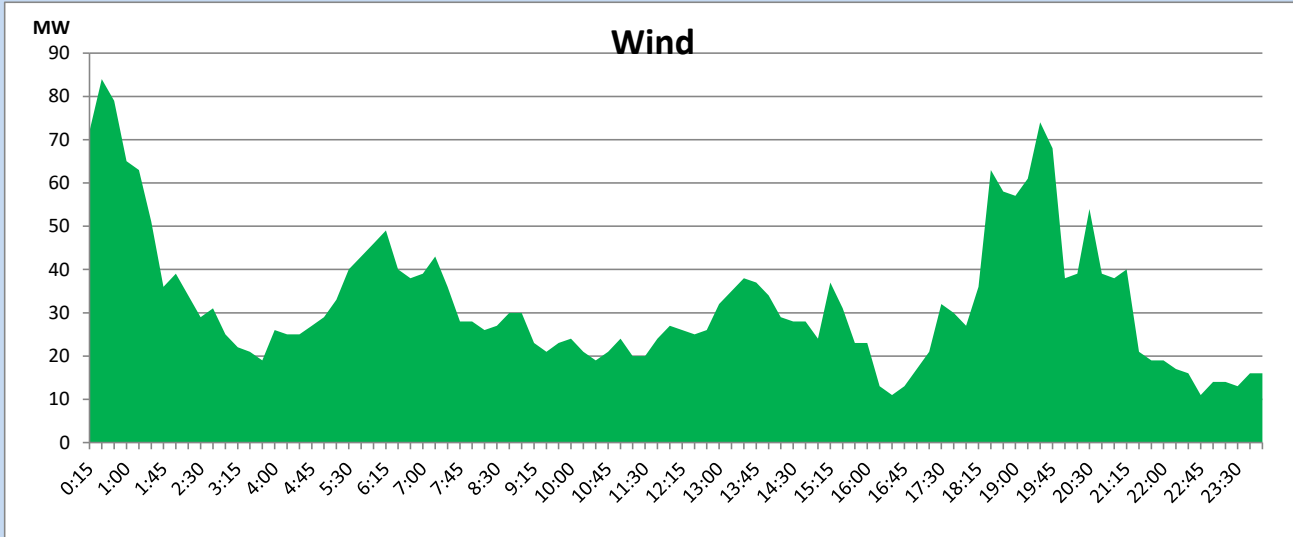
April 22, 2023



Wind Generation during

April 22, 2023

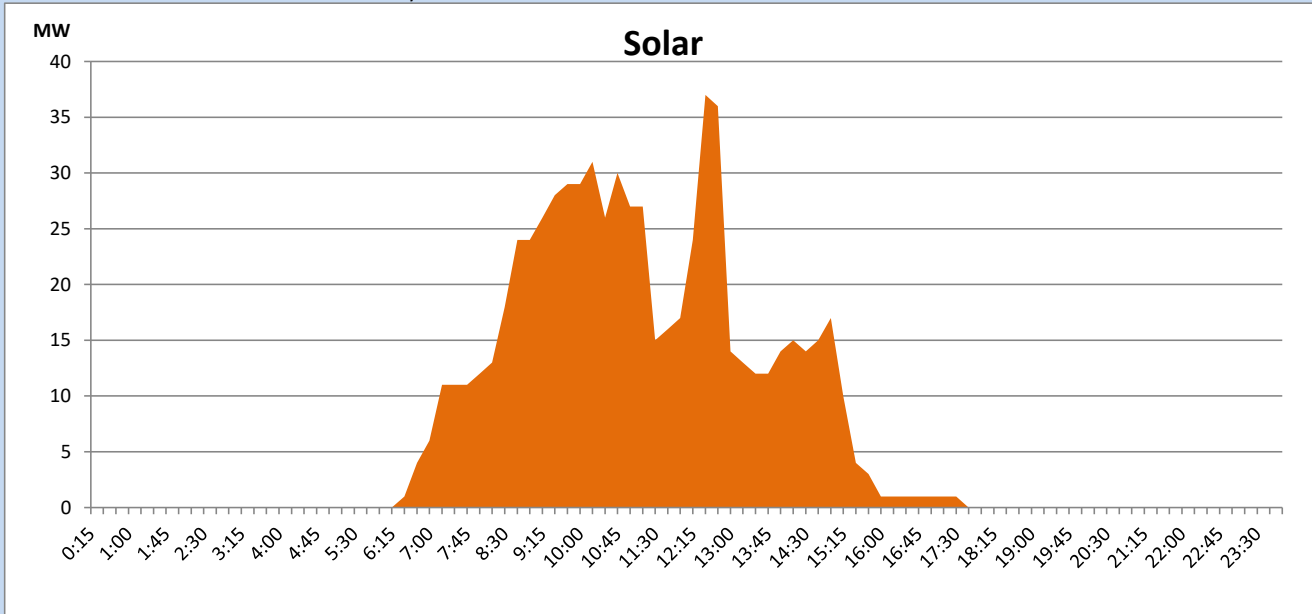
Based on Telemetered Power Stations only



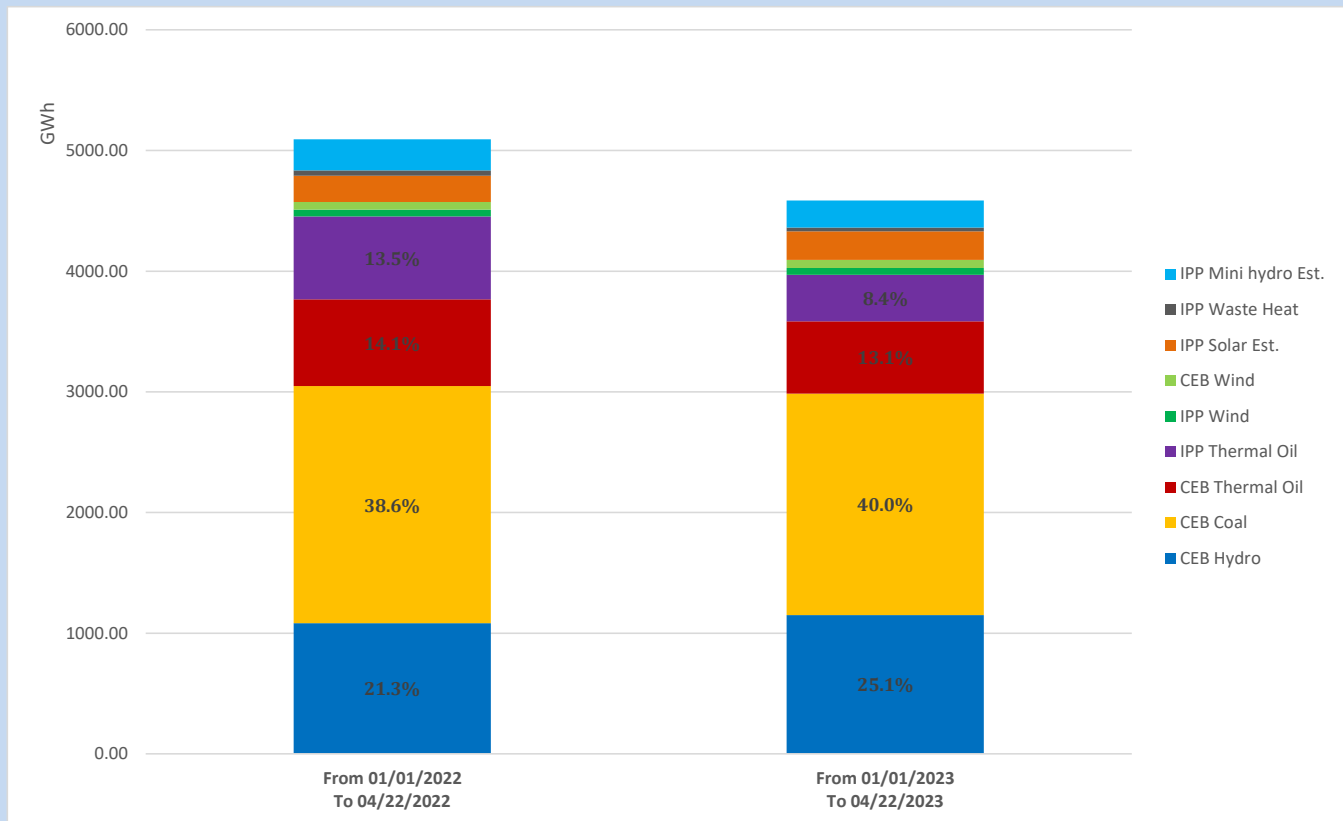
Solar Generation during

April 22, 2023

Based on Telemetered Power Stations only



Cumulative Dispatch Comparison with Last Year



The above figures are including contribution from roof top solar, non telemetered solar and mini hydro plants

Thermal Plant Fuel types

Power Station	Primary Fuel
CEB Thermal	
Sapugaskanda 1	Heavy Fuel
Sapugaskanda 2	Heavy Fuel
Kelanitissa Small Gas Turbines	Auto Diesel
GT 7 - Kelanitissa	Auto Diesel
Kelanitissa CCY	Naphtha or Diesel
Lakvijaya 1	Coal
Lakvijaya 2	Coal
Lakvijaya 3	Coal
Uthuru Janani	Heavy Fuel
Barge CEB	Heavy Fuel

Power Station	Primary Fuel
Private Thermal	
West Coast	Auto Diesel / Heavy Fuel

Major Incidents reported during the day

April 22, 2023

- 1) Sapugaskanda PS unit 06 tripped at 05:47hrs due to lubrication oil pressure low. Sapugaskanda PS unit 06 resumed generation at 06:48hrs.
- 2) Kolonnawa - Seethawaka 132kV cct tripped and A/R at 10:43hrs from Seethawaka end and tripped from Kolonnawa end. The cct normalized at 10:50hrs.
- 3) Habarana – Ukuwela 132kV cct tripped and A/R from both ends due to the operation of distance protection at 13:47hrs.
- 4) Sapugaskanda PS unit 10 tripped at 20:36hrs due to control supply failure. Sapugaskanda PS unit 10 resumed generation at 21:26hrs.
- 5) Sapugaskanda PS unit 12 tripped at 23:18hrs due to exhaust gas leak. Sapugaskanda PS unit 12 is yet to resume generation.