

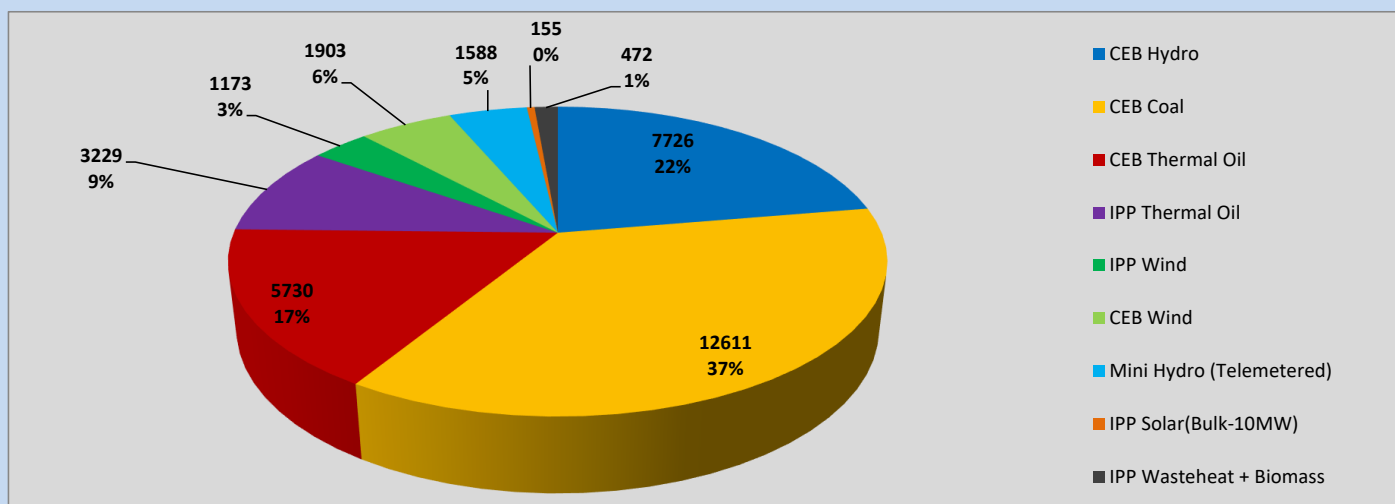
Generation and Reservoirs Statistics

May 21, 2023



PUBLIC UTILITIES COMMISSION OF SRI LANKA

Daily Generation Mix in MWh



Total Generation (Excluding estimated figures) =

34,587 MWh

Estimated figures of CEB generation report

Estimated unserved energy = 0.00 GWh

Estimated Mini Hydro (Non telemetered) = 2402 MWh

Estimated IPP Solar PV (Bulk 1-10MW) = 304 MWh

Estimated Solar Roof Top PV = 1920 MWh

Cumulative Dispatch

Following data excludes the contribution from roof top solar, non telemetered solar and mini hydro plants

For Current Month

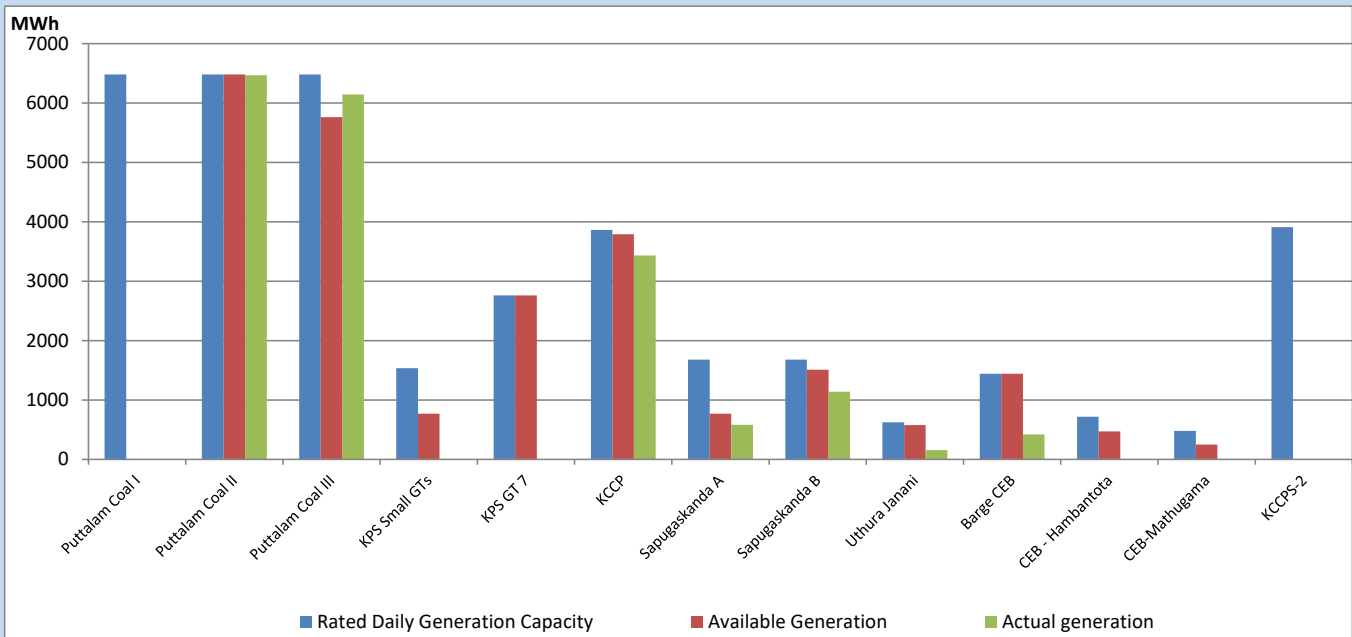
Category	Dispatch (GWh)	
CEB Hydro	184	23.45%
CEB Coal	344	43.75%
CEB Thermal Oil	106	13.51%
IPP Thermal	69	8.80%
SPP Wind	22	2.83%
CEB Wind	25	3.19%
Mini Hydro (Telemetered)	22	2.75%
IPP Solar (Bulk-10MW)	5	0.70%
IPP Wasteheat + BMP	8	1.00%
Total	786	

For Current Year

Category	Dispatch (GWh)	
CEB Hydro	1,386	25.95%
CEB Coal	2,331	43.65%
CEB Thermal Oil	761	14.26%
IPP Thermal	487	9.11%
SPP Wind	80	1.50%
CEB Wind	95	1.78%
Mini Hydro (Telemetered)	117	2.19%
IPP Solar (Bulk-10MW)	40	0.75%
IPP Wasteheat	43	0.80%
Total	5,340	

CEB owned Thermal Plant Dispatch

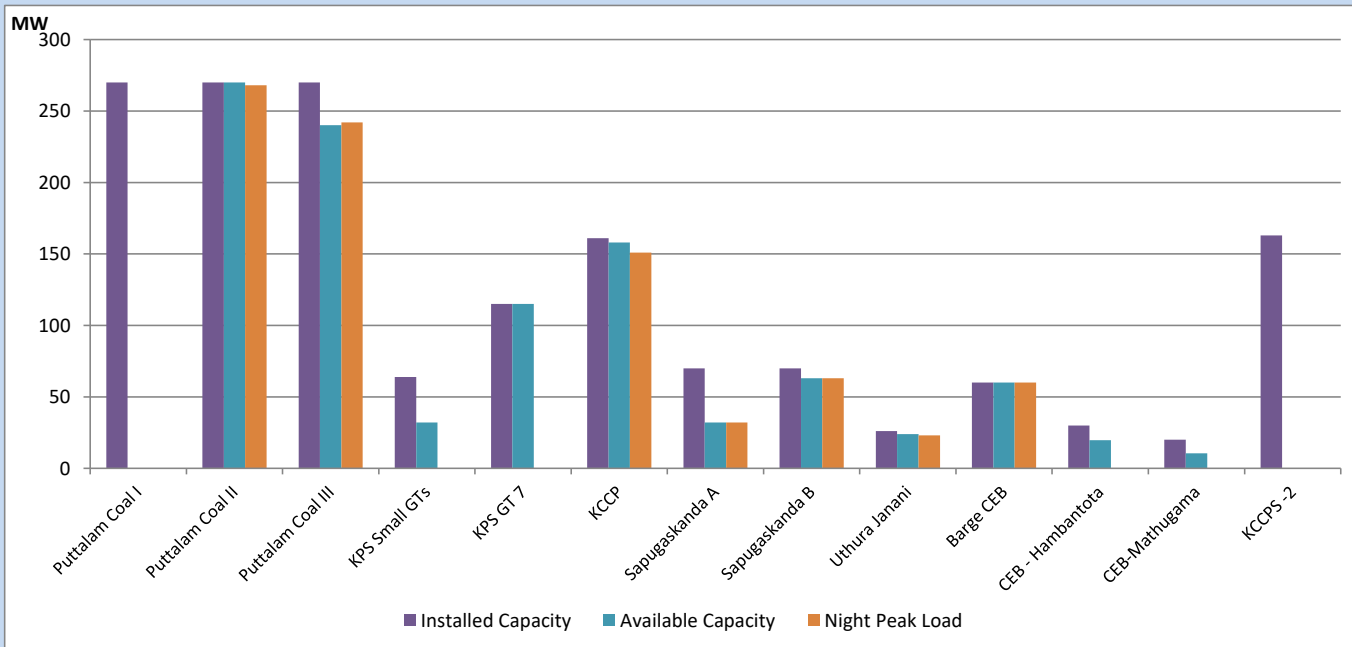
May 21, 2023



Available Generation is estimated based on plant availability at 6.00am on

May 22, 2023

CEB owned Thermal Plant Loading at the Night Peak



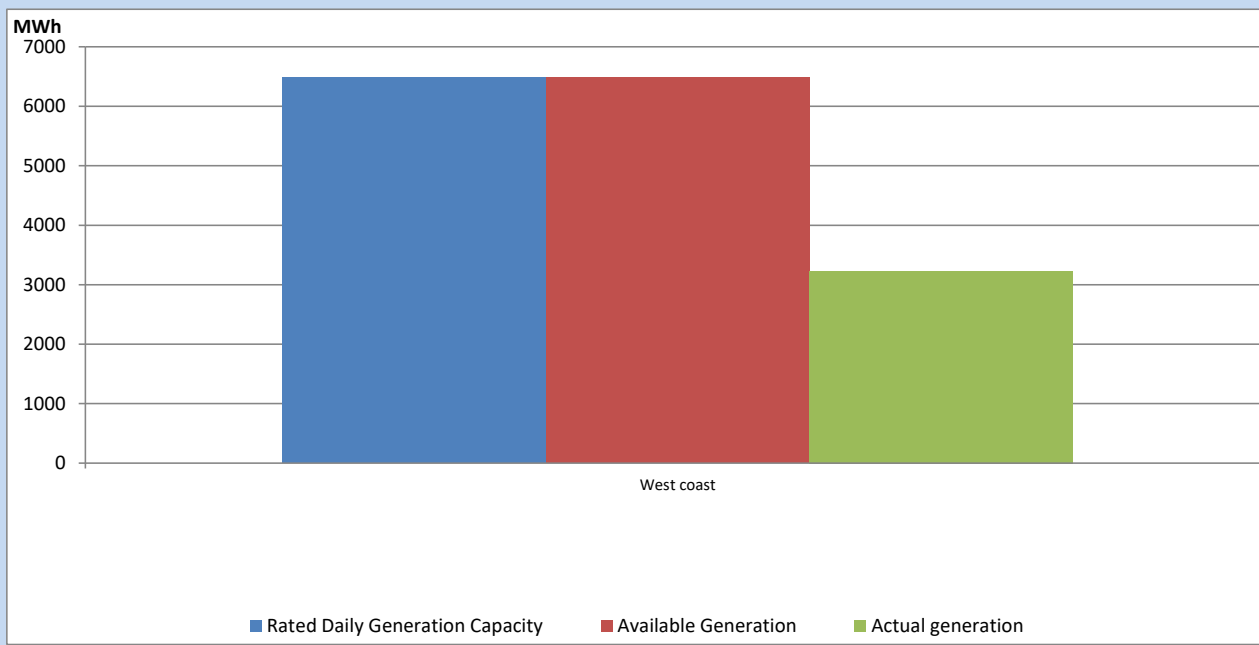
Note-

Plant availability is recorded at 6.00 am on

May 22, 2023

IPP owned Thermal Plant Dispatch

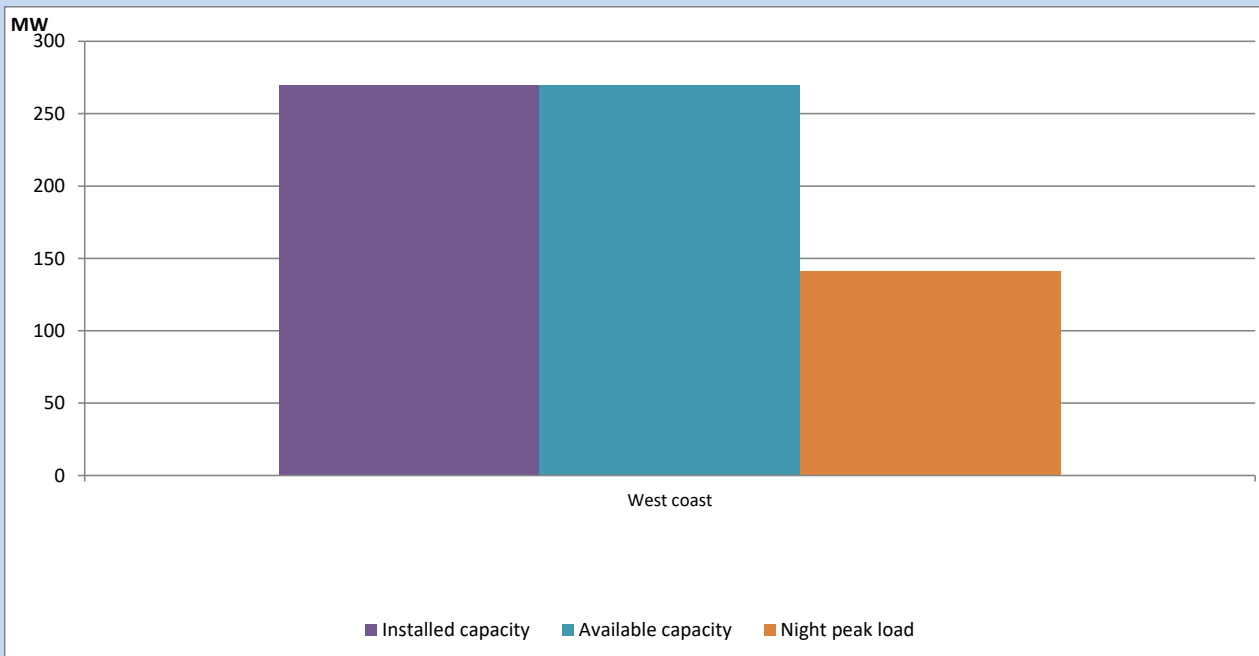
May 21, 2023



Available Generation is estimated based on plant availability at 6.00am on

May 22, 2023

IPP owned Thermal Plant Loading at the Night Peak

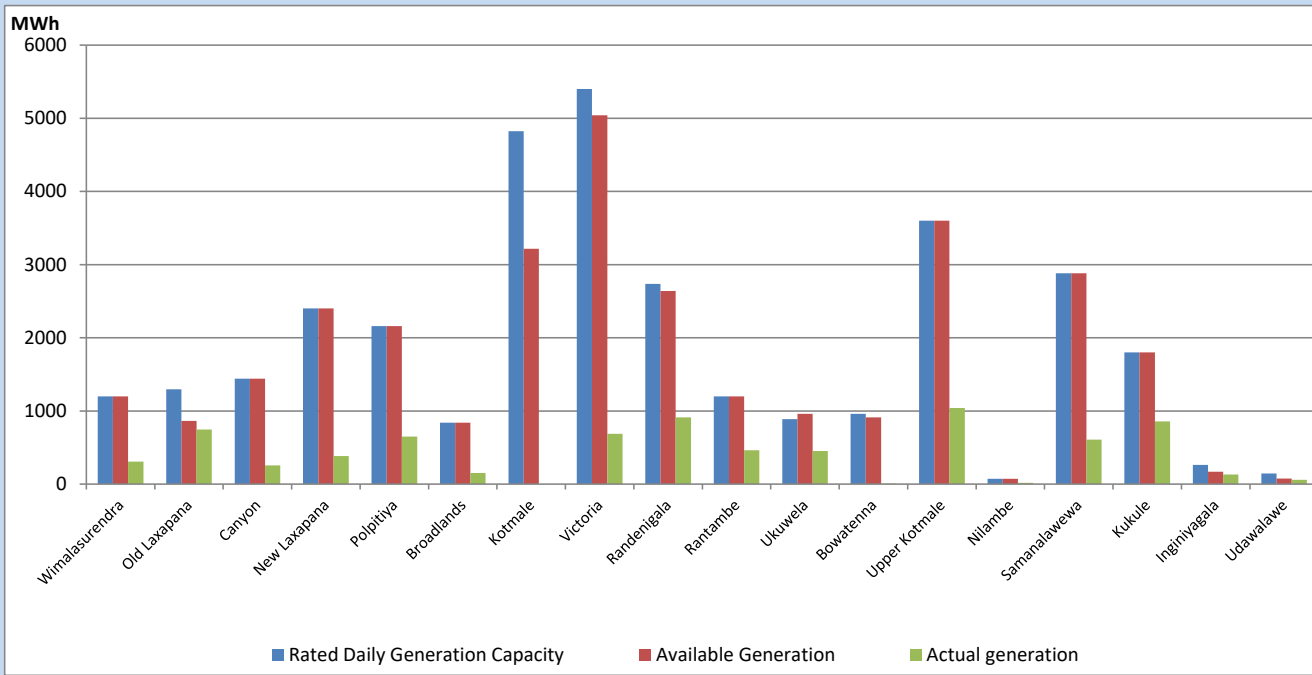


Note- Plant availability is recorded at 6.00 am on

May 22, 2023

Major Hydro Plant Dispatch

May 21, 2023

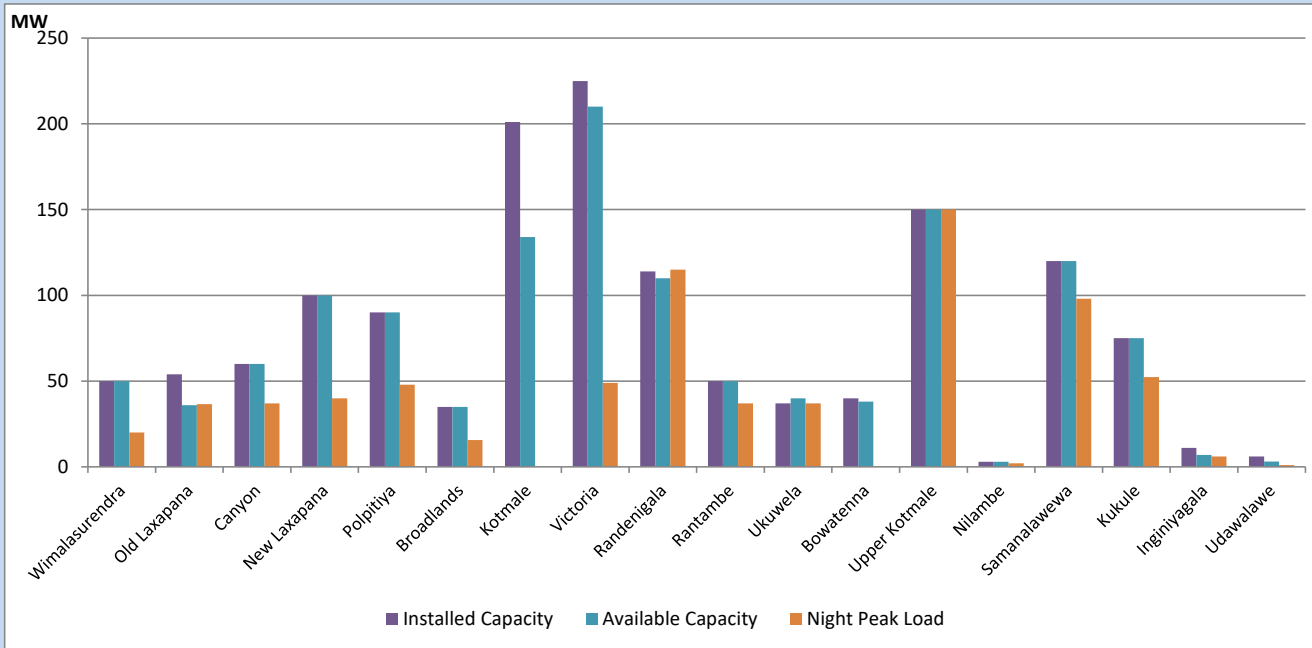


Available Generation is estimated based on plant availability at 6.00am on
Broadlands power plant is operating in the Commissioning Stage

May 22, 2023

Major Hydro Plant Loading at Night Peak

May 21, 2023



Note- Plant availability is recorded at 6.00 am on
Broadlands power plant is operating in the Commissioning Stage

May 22, 2023

Summary of Major Plant performance

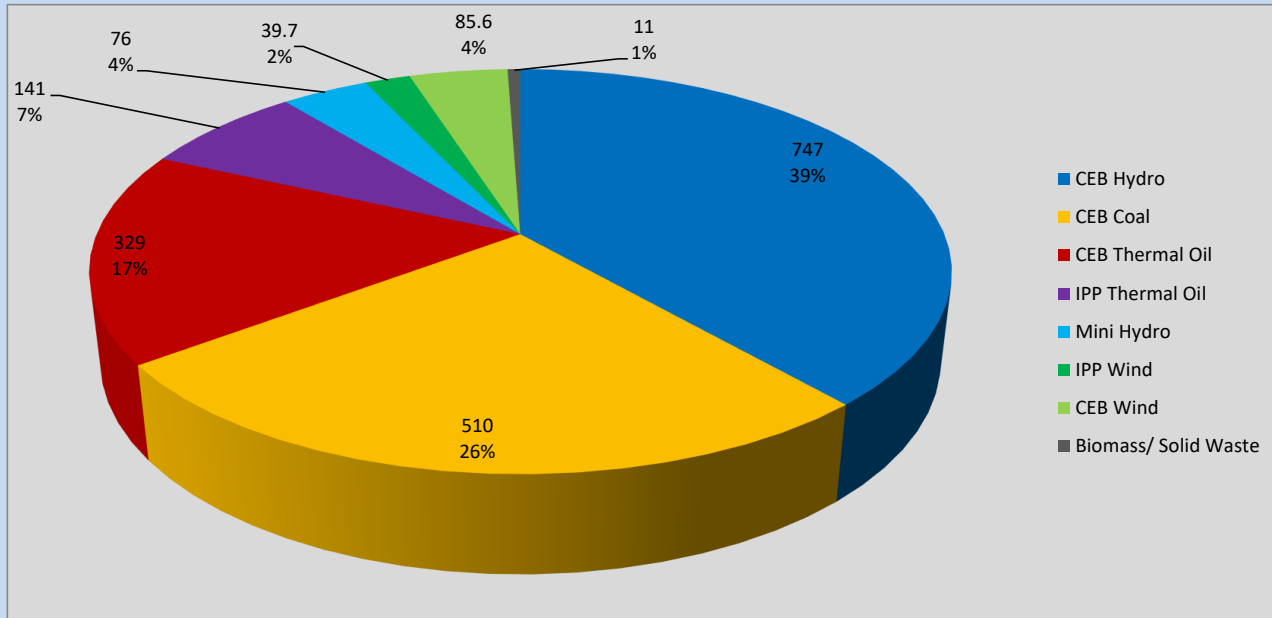
Plant	Installed Capacity	Plant Availability	Night peak Load	Plant Dispatch
	(MW)	(MW)	(MW)	(MWh)
Wimalasurendra	50	50	20	308
Old Laxapana	54	36	37	745
Canyon	60	60	37	257
New Laxapana	100	100	40	383
Polpitiya	90	90	48	648
Broadlands	35	35	16	153
Kotmale	201	134	0	0
Victoria	225	210	49	689
Randenigala	114	110	115	911
Rantambe	50	50	37	464
Ukuwela	37	40	37	452
Bowatenna	40	38	0	6
Upper Kotmale	150	150	150	1,040
Nilambe	3	3	2	17
Samanalawewa	120	120	98	607
Kukule	75	75	52	858
Inginiyagala	11	7	6	131
Udawalawe	6	3	1	57
Puttalam Coal I	270	0	0	0
Puttalam Coal II	270	270	268	6,467
Puttalam Coal III	270	240	242	6,144
KPS Small GTs	64	32	0	0
KPS GT 7	115	115	0	0
KCCP	161	158	151	3,433
Sapugaskanda A	70	32	32	581
Sapugaskanda B	70	63	63	1,141
Uthura Janani	26	24	23	155
Barge CEB	60	60	60	420
CEB-Hambantota	30	20	0	0
CEB-Mathugama	20	11	0	0
ACE Matara	24	0	0	0
Asia Power	50	0	0	0
KCCPS -2	163	0	0	0
West Coast	270	270	141	3,229
Nothern Power	36	0	0	0
ACE Embilipitiya	93	0	0	0
Total	3,483	2,605	1,937	34,587

Plant availability is the availability recorded at 6 am on

May 22, 2023

Contribution to the Night Peak in MW

May 21, 2023

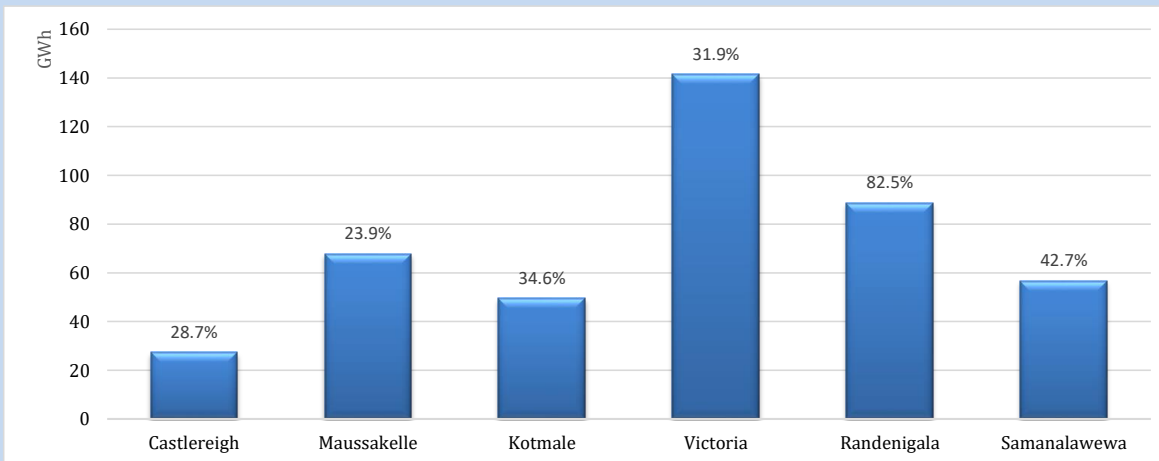


Night Peak*	1,939 MW
Day Peak Maximum Demand	1,377 MW
Day Peak Minimum Demand	1,238 MW
Off Peak Minimum Demand	1,247 MW

Above figures are excluding contribution from roof top solar, non telemetered solar and mini hydro plants

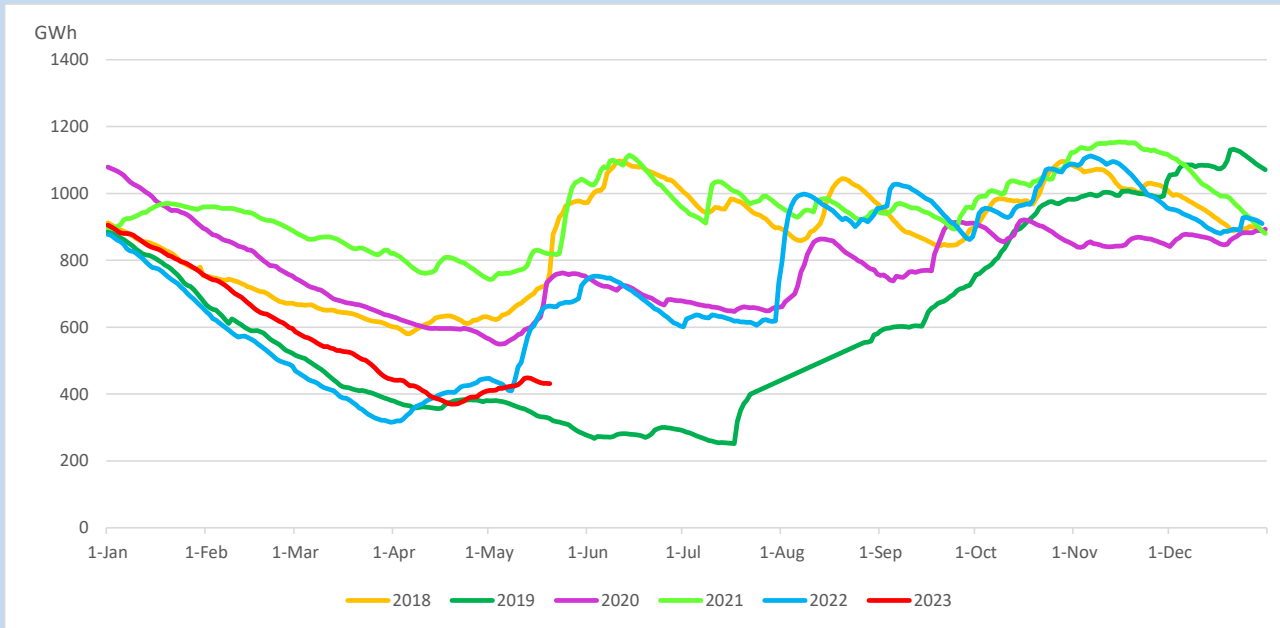
Reservoir Levels -

as at 06.00 Hr on May 22, 2023

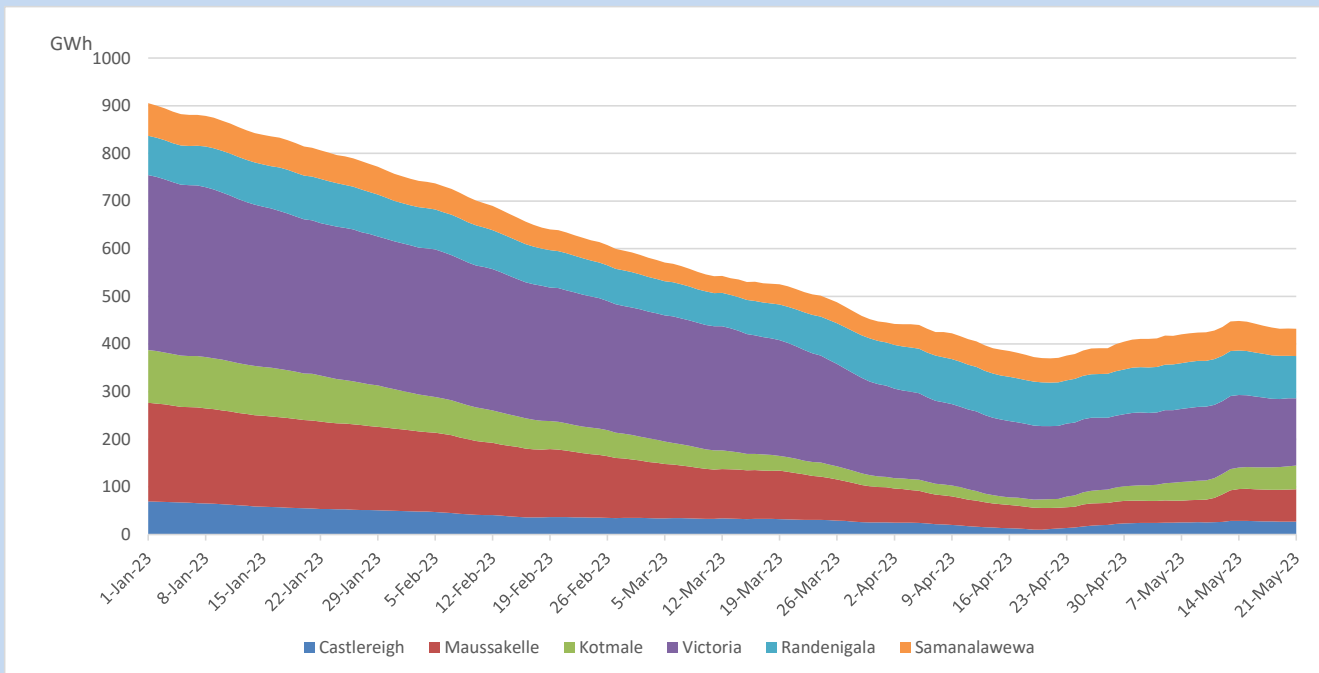


Total Reservoir Level	431.6 GWh
% of Total capacity	35.8%

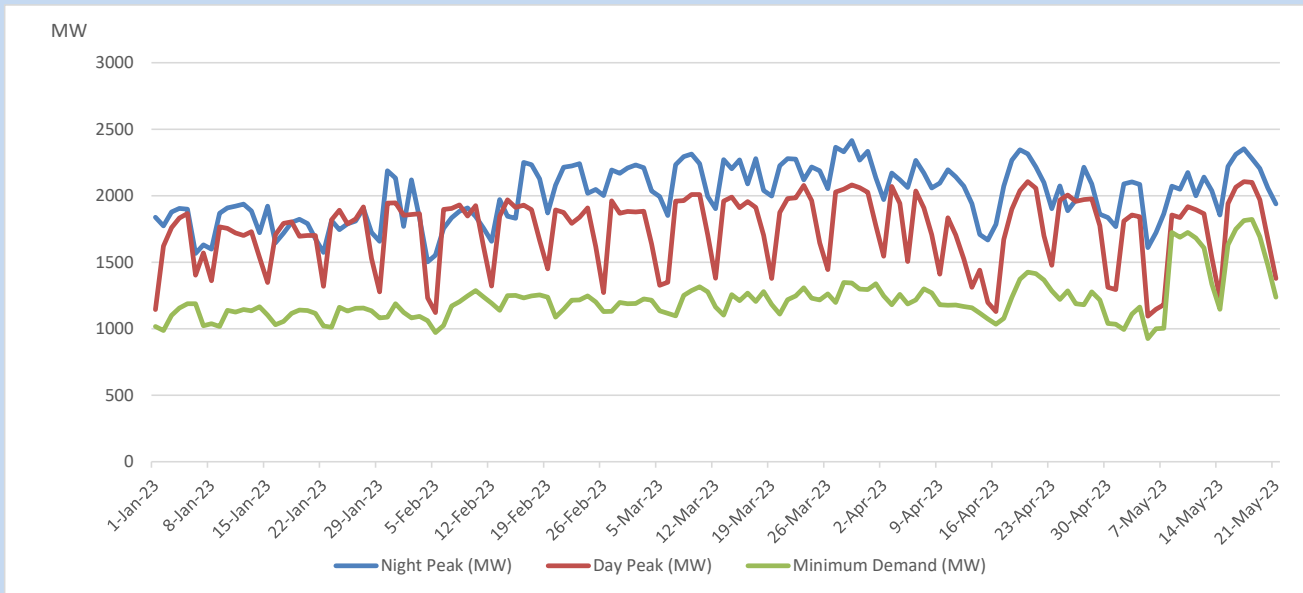
Comparison of Total Reservoir Storage Levels with Past Years



Variation of Major Hydro Reservoir Levels in the current year (GWh)



Variation of Demand during the current year

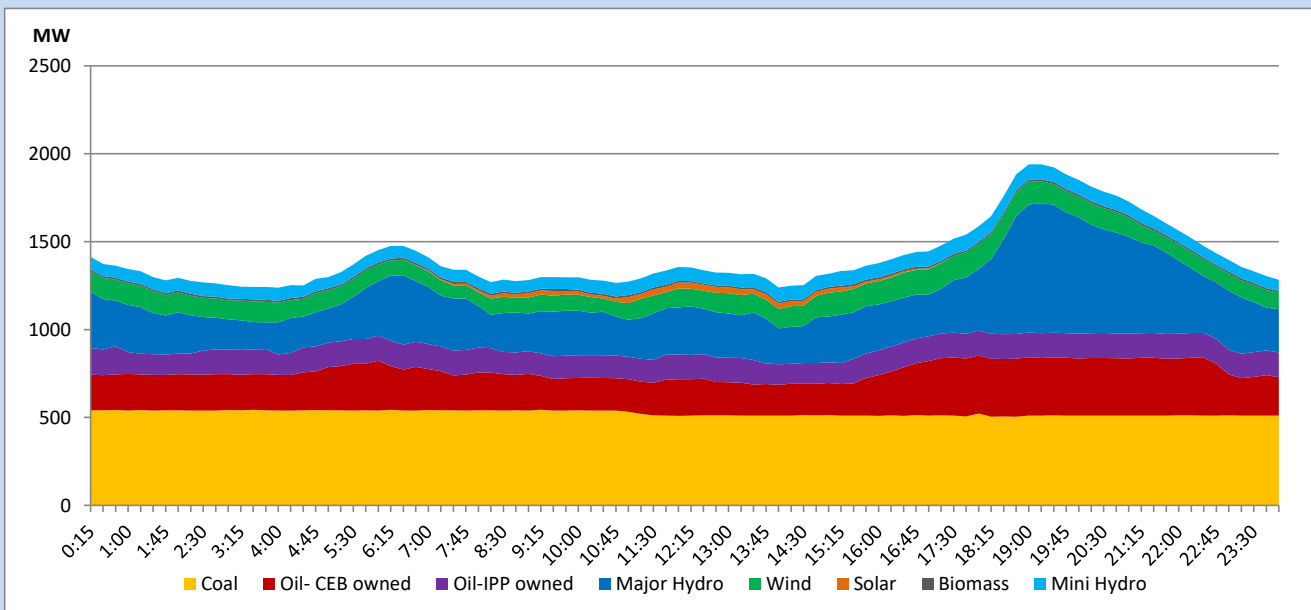


The above figures are excluding contribution from roof top solar, non telemetered solar and mini hydro plants

Daily Load Curve

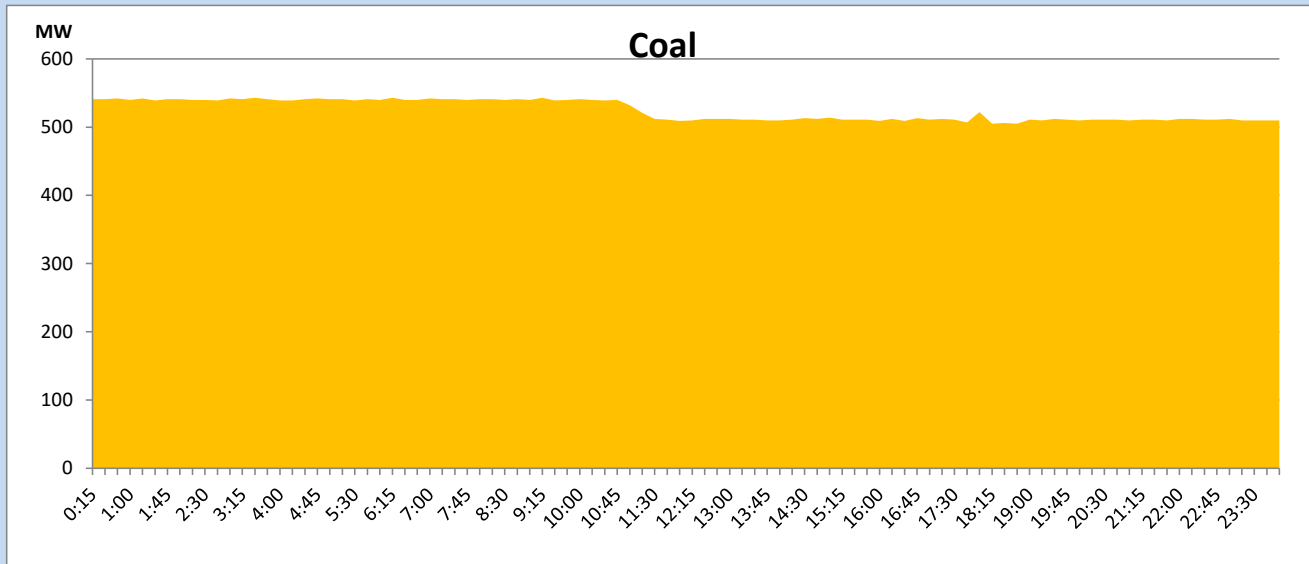
May 21, 2023

Solar and wind data is based on Telemetered Power Stations only



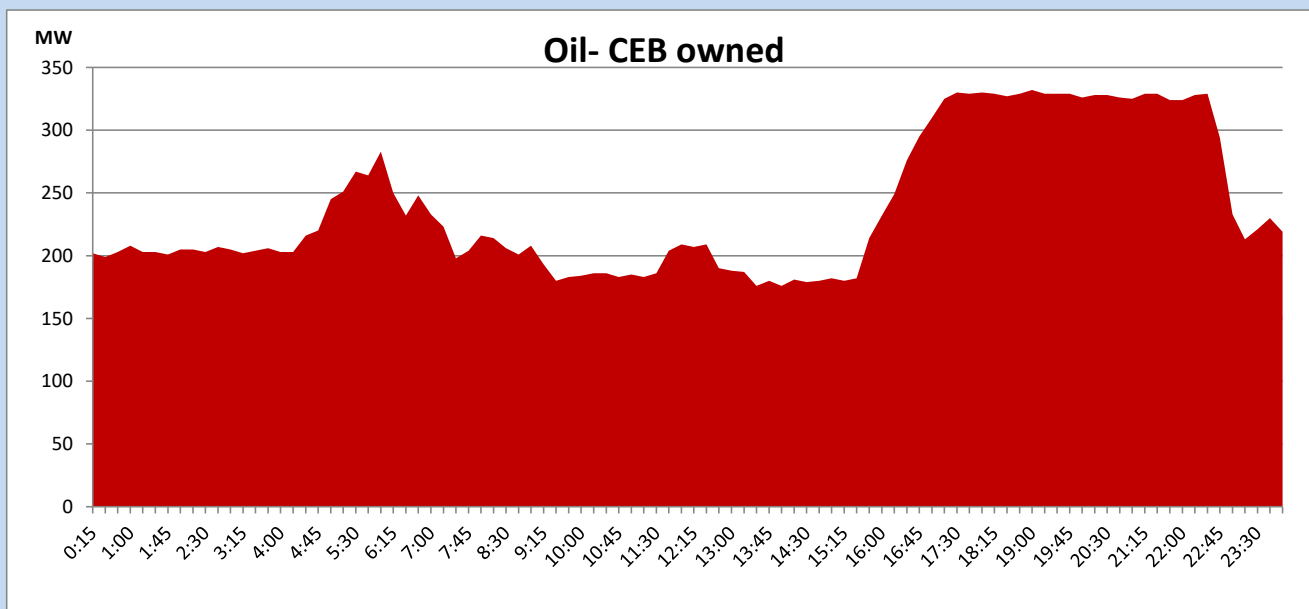
Coal Generation during

May 21, 2023



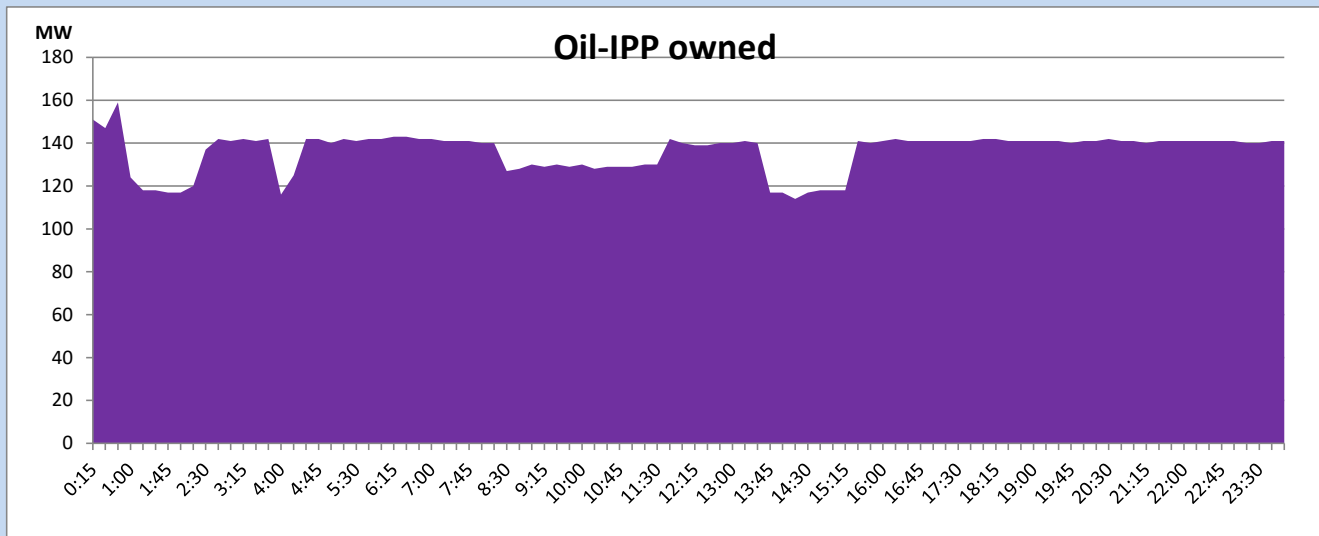
CEB Oil Plant Generation during

May 21, 2023



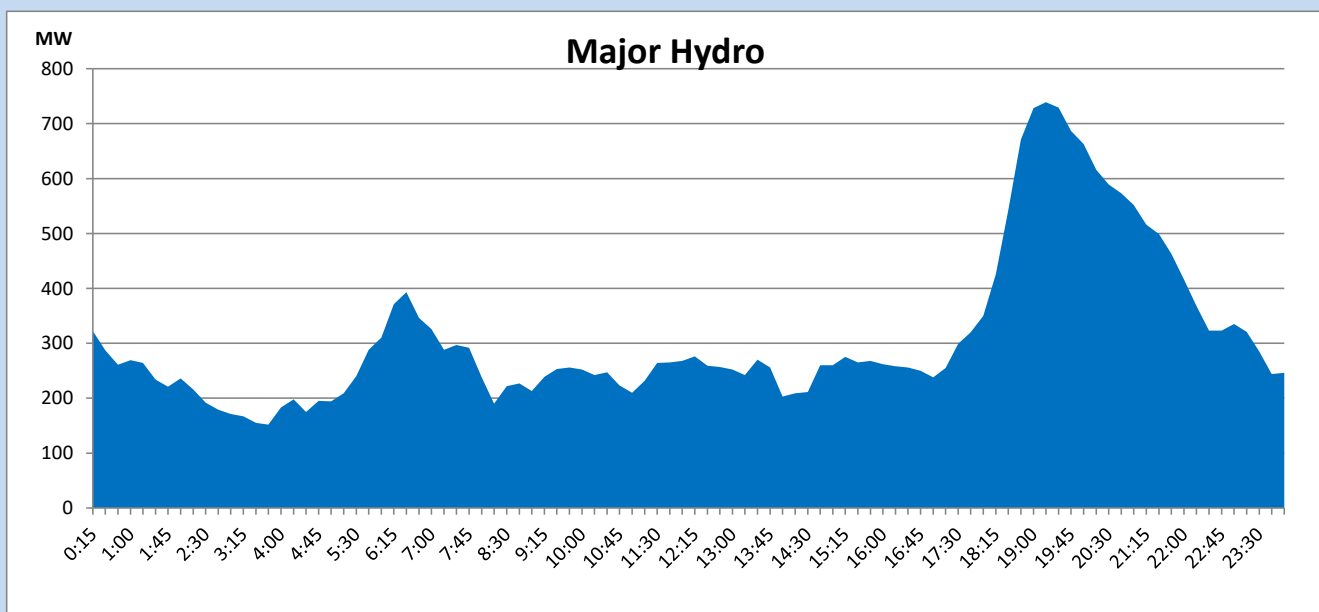
IPP Oil Plant Generation during

May 21, 2023



Major Hydro Generation during

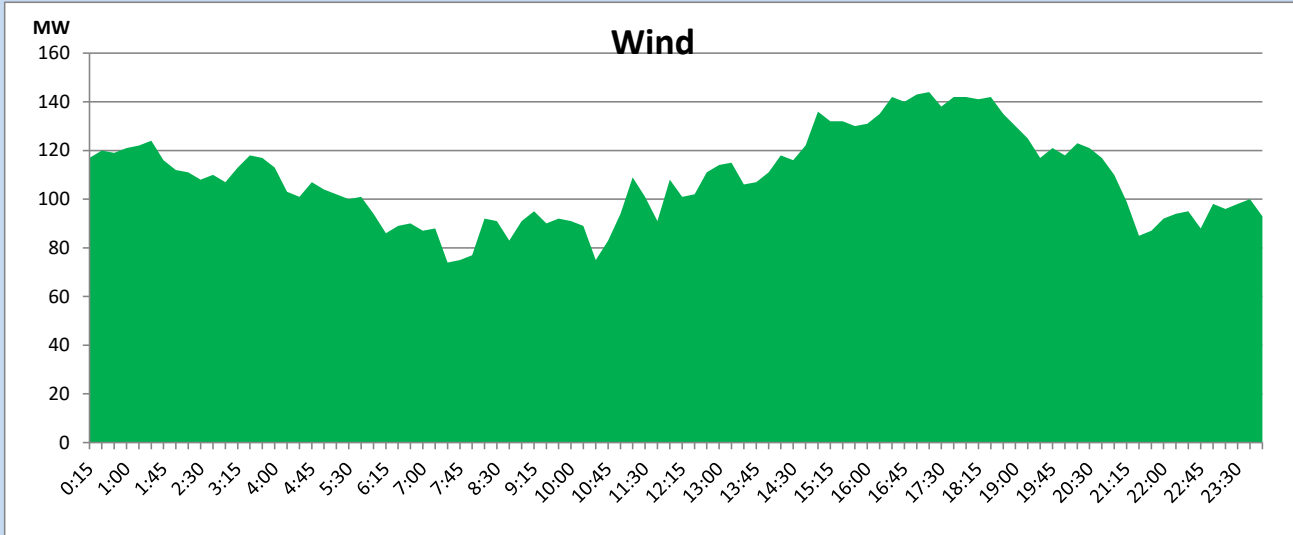
May 21, 2023



Wind Generation during

May 21, 2023

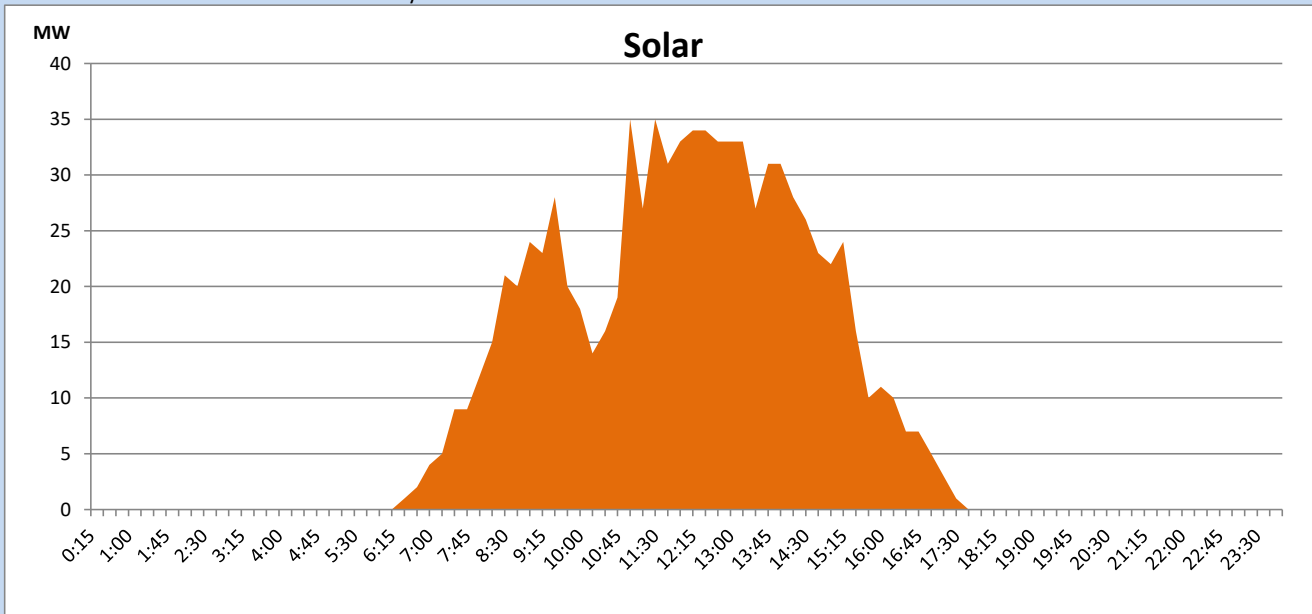
Based on Telemetered Power Stations only



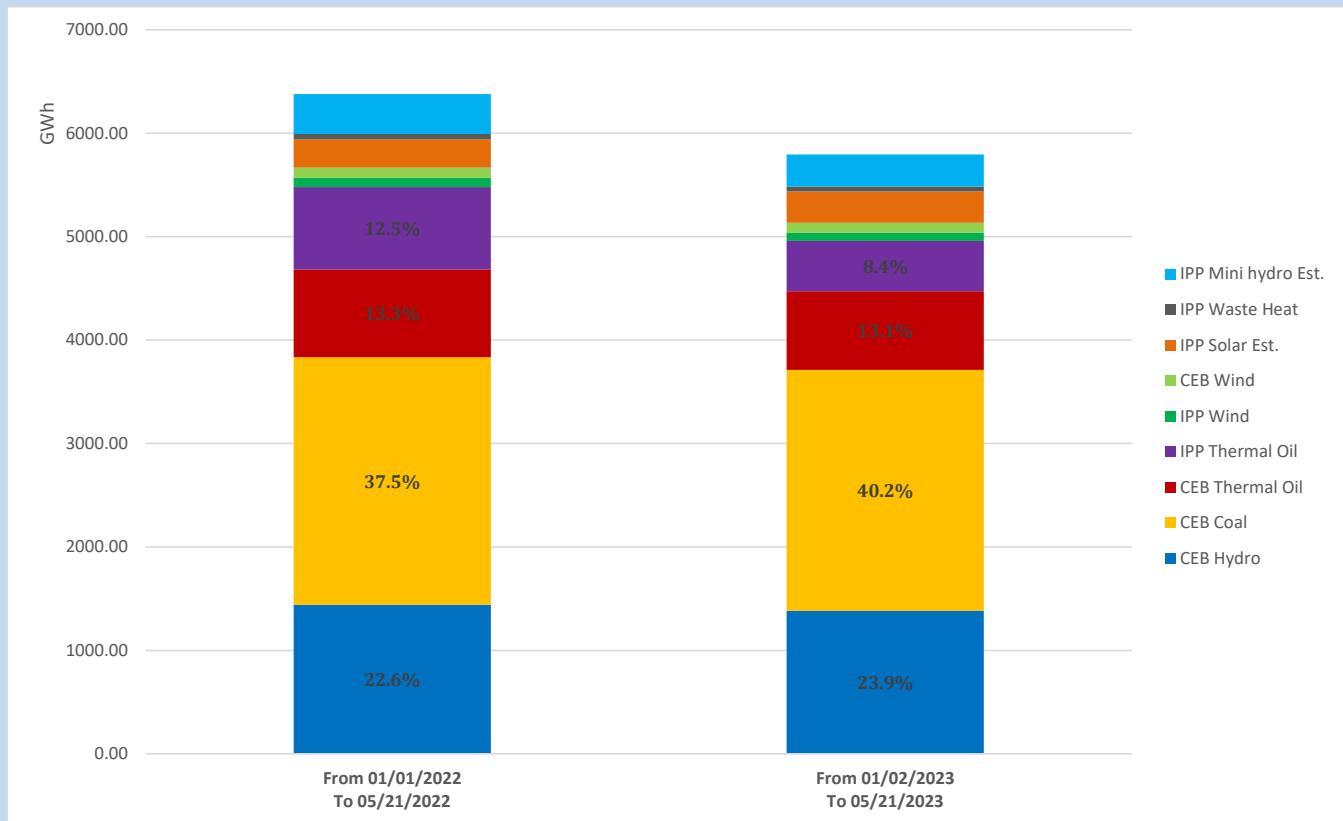
Solar Generation during

May 21, 2023

Based on Telemetered Power Stations only



Cumulative Dispatch Comparison with Last Year



The above figures are including contribution from roof top solar, non telemetered solar and mini hydro plants

Thermal Plant Fuel types

Power Station	Primary Fuel
CEB Thermal	
Sapugaskanda 1	Heavy Fuel
Sapugaskanda 2	Heavy Fuel
Kelanitissa Small Gas Turbines	Auto Diesel
GT 7 - Kelanitissa	Auto Diesel
Kelanitissa CCY	Naphtha or Diesel
Lakvijaya 1	Coal
Lakvijaya 2	Coal
Lakvijaya 3	Coal
Uthuru Janani	Heavy Fuel
Barge CEB	Heavy Fuel
KCCPS -2	Auto Diesel

Power Station	Primary Fuel
Private Thermal	
West Coast	Auto Diesel / Heavy Fuel

Major Incidents reported during the day

May 21, 2023

- 1) LVPS Unit 03 de-loaded up to 240MW(net) from 10:50hrs due to a boiler drum steam leak. The unit is yet to reach full load.