

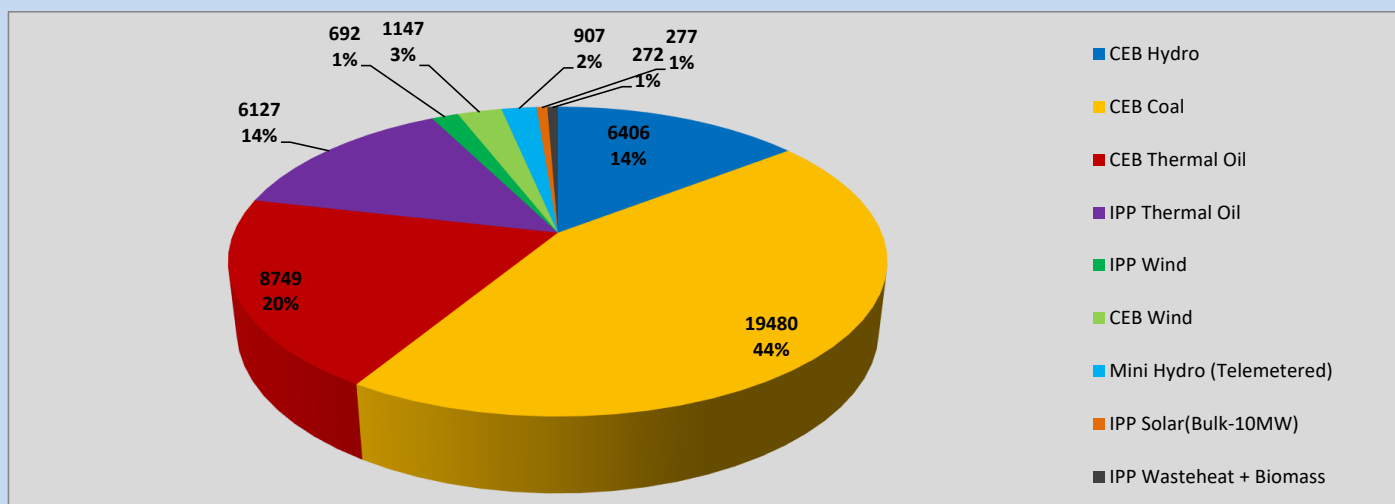
Generation and Reservoirs Statistics

April 21, 2023



PUBLIC UTILITIES COMMISSION OF SRI LANKA

Daily Generation Mix in MWh



Total Generation (Excluding estimated figures) =

44,057 MWh

Estimated figures of CEB generation report

Estimated unserved energy = 0.00 GWh

Estimated Mini Hydro (Non telemetered) = 1473 MWh

Estimated IPP Solar PV (Bulk 1-10MW) = 304 MWh

Estimated Solar Roof Top PV = 1640 MWh

Cumulative Dispatch

Following data excludes the contribution from roof top solar, non telemetered solar and mini hydro plants

For Current Month

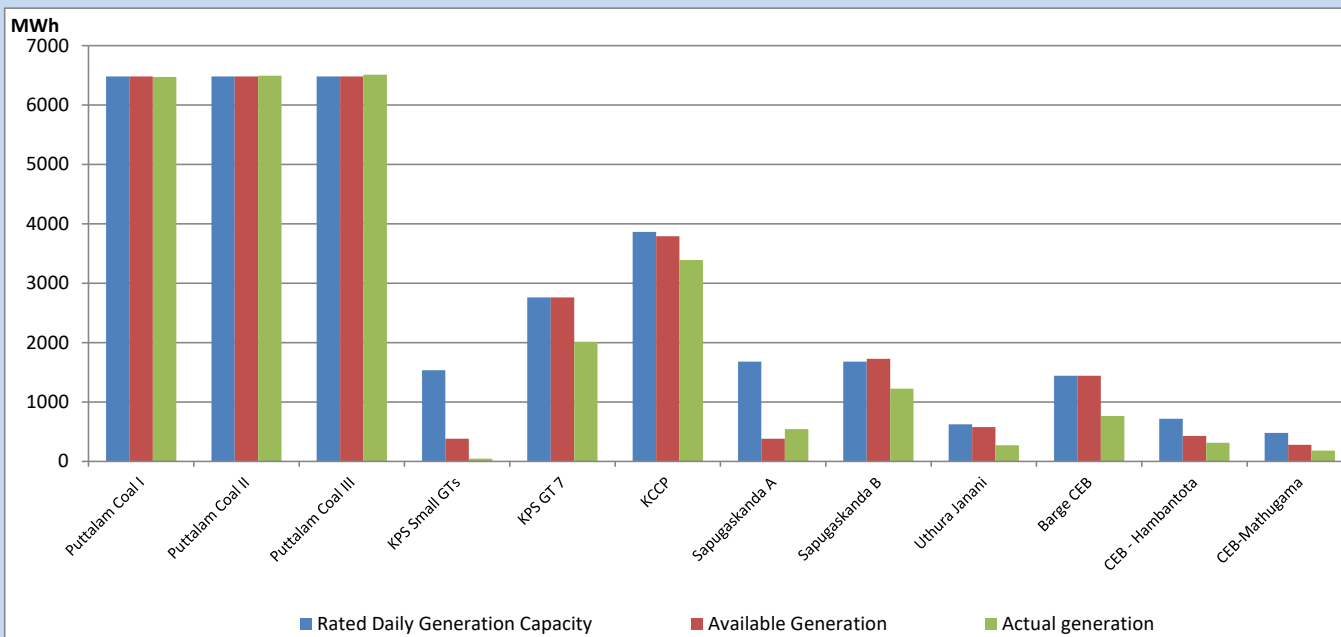
Category	Dispatch (GWh)	
CEB Hydro	223	28.21%
CEB Coal	292	36.82%
CEB Thermal Oil	123	15.57%
IPP Thermal	109	13.78%
SPP Wind	6	0.70%
CEB Wind	8	1.00%
Mini Hydro (Telemetered)	18	2.29%
IPP Solar (Bulk-10MW)	7	0.85%
IPP Wasteheat + BMP	6	0.78%
Total	792	

For Current Year

Category	Dispatch (GWh)	
CEB Hydro	1,145	27.20%
CEB Coal	1,814	43.11%
CEB Thermal Oil	593	14.10%
IPP Thermal	379	9.01%
SPP Wind	56	1.34%
CEB Wind	68	1.62%
Mini Hydro (Telemetered)	87	2.07%
IPP Solar (Bulk-10MW)	32	0.77%
IPP Wasteheat	32	0.77%
Total	4,208	

CEB owned Thermal Plant Dispatch

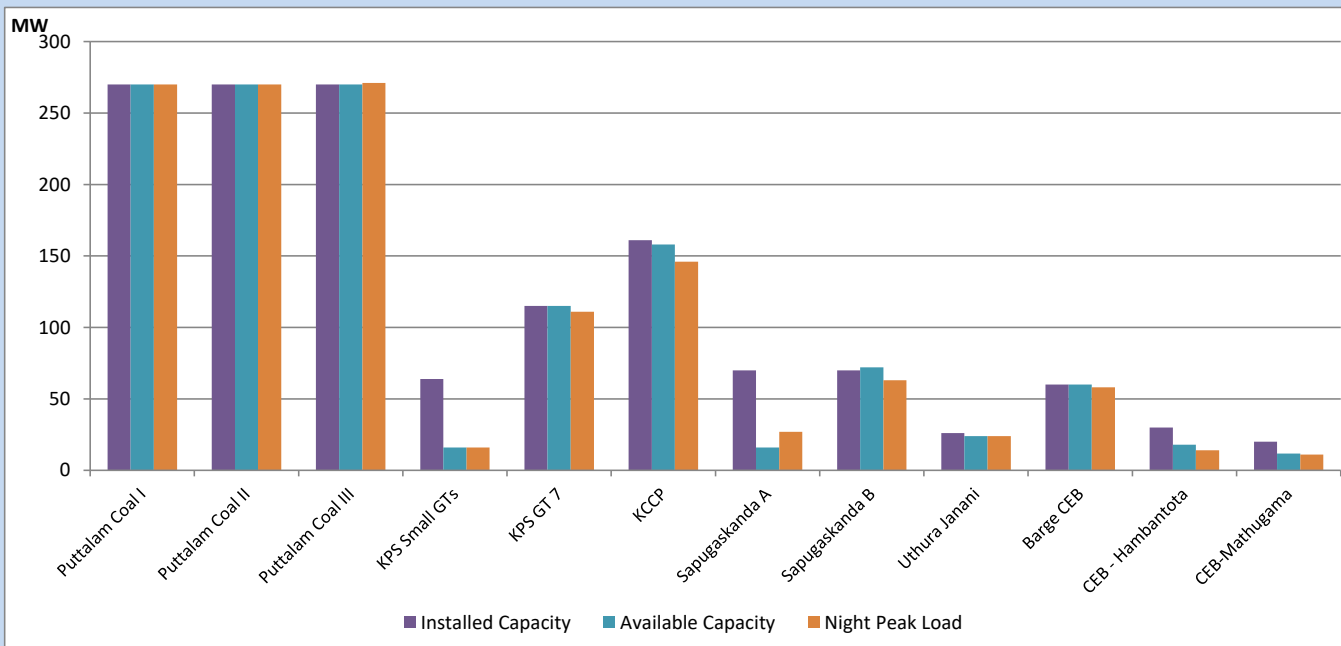
April 21, 2023



Available Generation is estimated based on plant availability at 6.00am on

April 22, 2023

CEB owned Thermal Plant Loading at the Night Peak

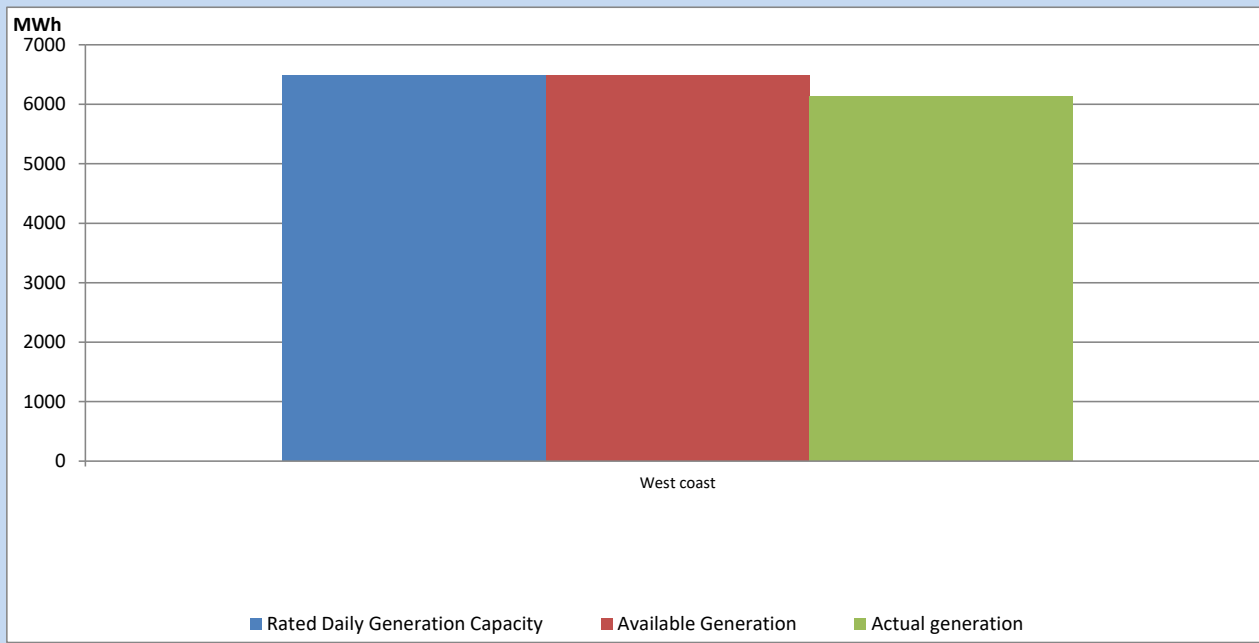


Note- Plant availability is recorded at 6.00 am on

April 22, 2023

IPP owned Thermal Plant Dispatch

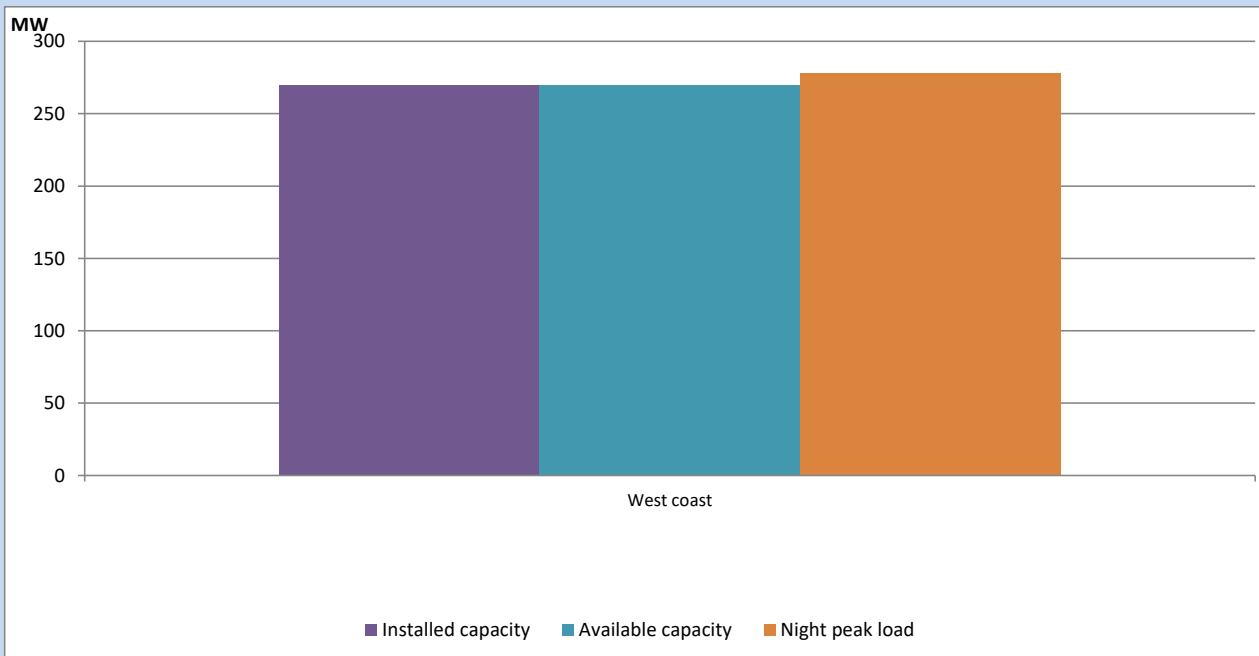
April 21, 2023



Available Generation is estimated based on plant availability at 6.00am on

April 22, 2023

IPP owned Thermal Plant Loading at the Night Peak

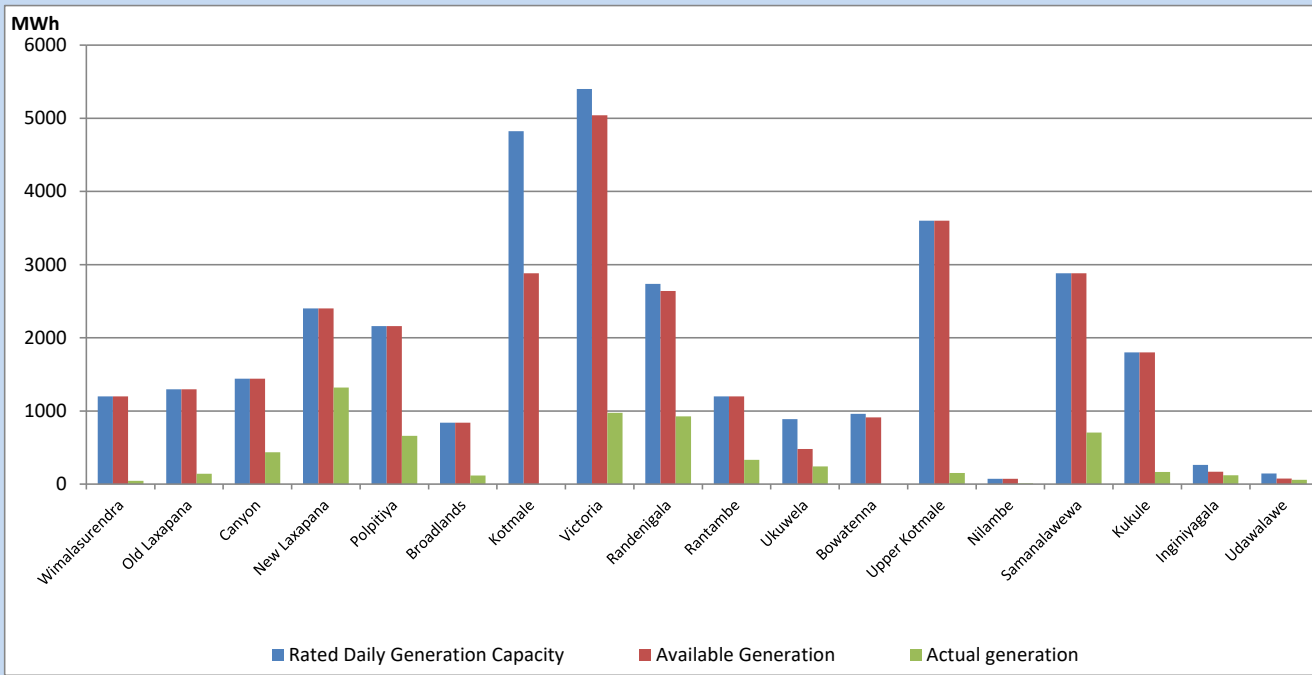


Note- Plant availability is recorded at 6.00 am on

April 22, 2023

Major Hydro Plant Dispatch

April 21, 2023

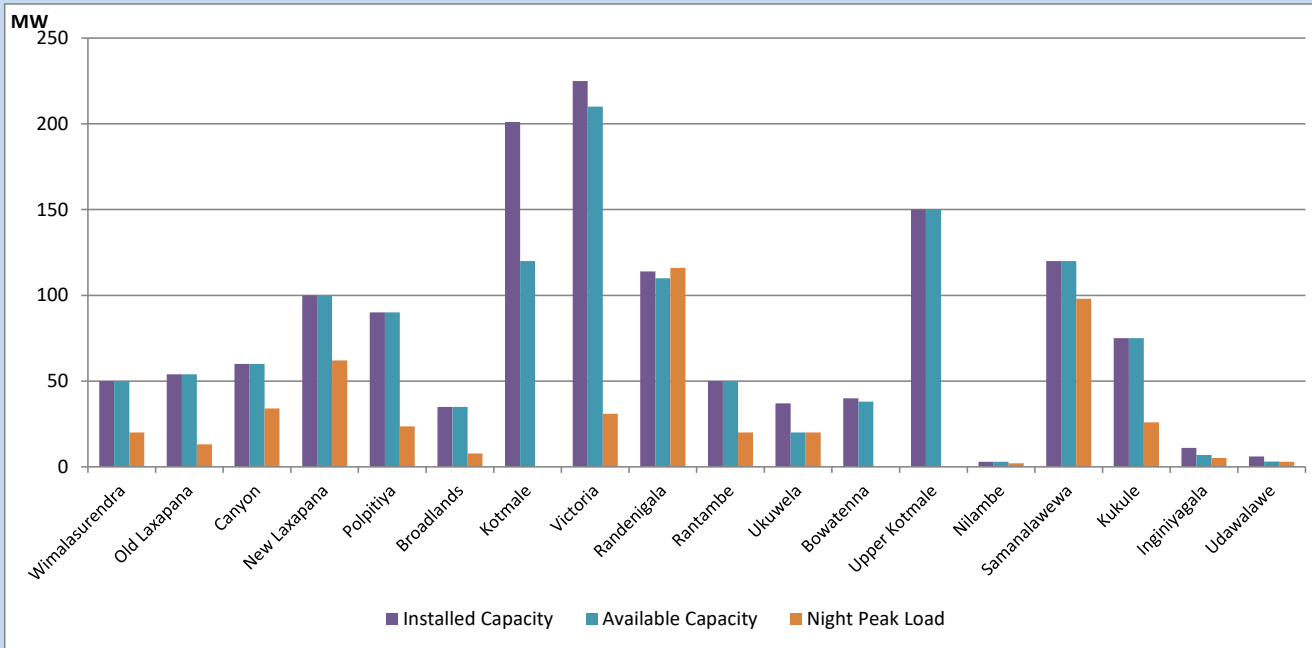


Available Generation is estimated based on plant availability at 6.00am on
Broadlands power plant is operating in the Commissioning Stage

April 22, 2023

Major Hydro Plant Loading at Night Peak

April 21, 2023



Note- Plant availability is recorded at 6.00 am on

April 22, 2023

Broadlands power plant is operating in the Commissioning Stage

Summary of Major Plant performance

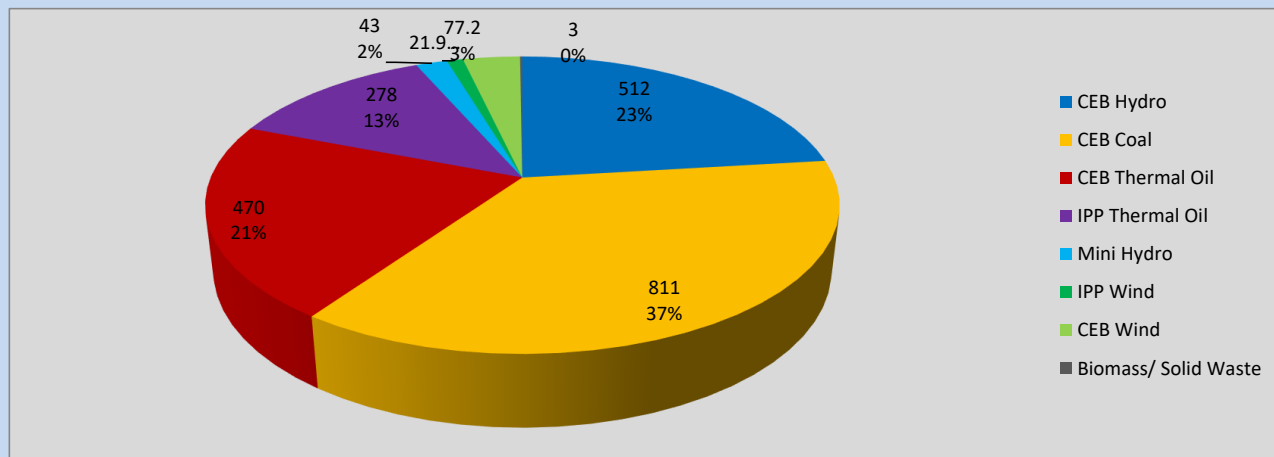
Plant	Installed Capacity	Plant Availability	Night peak Load	Plant Dispatch
	(MW)	(MW)	(MW)	(MWh)
Wimalasurendra	50	50	20	45
Old Laxapana	54	54	13	142
Canyon	60	60	34	436
New Laxapana	100	100	62	1,320
Polpitiya	90	90	24	660
Broadlands	35	35	8	117
Kotmale	201	120	0	0
Victoria	225	210	31	974
Randenigala	114	110	116	925
Rantambe	50	50	20	330
Ukuwela	37	20	20	241
Bowatenna	40	38	0	0
Upper Kotmale	150	150	0	151
Nilambe	3	3	2	12
Samanalawewa	120	120	98	704
Kukule	75	75	26	167
Inginiyagala	11	7	5	122
Udawalawe	6	3	3	60
Puttalam Coal I	270	270	270	6,474
Puttalam Coal II	270	270	270	6,494
Puttalam Coal III	270	270	271	6,512
KPS Small GTs	64	16	16	44
KPS GT 7	115	115	111	2,013
KCCP	161	158	146	3,392
Sapugaskanda A	70	16	27	543
Sapugaskanda B	70	72	63	1,223
Uthura Janani	26	24	24	270
Barge CEB	60	60	58	767
CEB-Hambantota	30	18	14	313
CEB-Mathugama	20	12	11	184
ACE Matara	24	0	0	0
Asia Power	50	0	0	0
Sojitz Kelanitissa	163	0	0	0
West Coast	270	270	278	6,127
Nothern Power	36	0	0	0
ACE Embilipitiya	93	0	0	0
Total	3,483	2,866	2,185	44,057

Plant availability is the availability recorded at 6 am on

April 22, 2023

Contribution to the Night Peak in MW

April 21, 2023

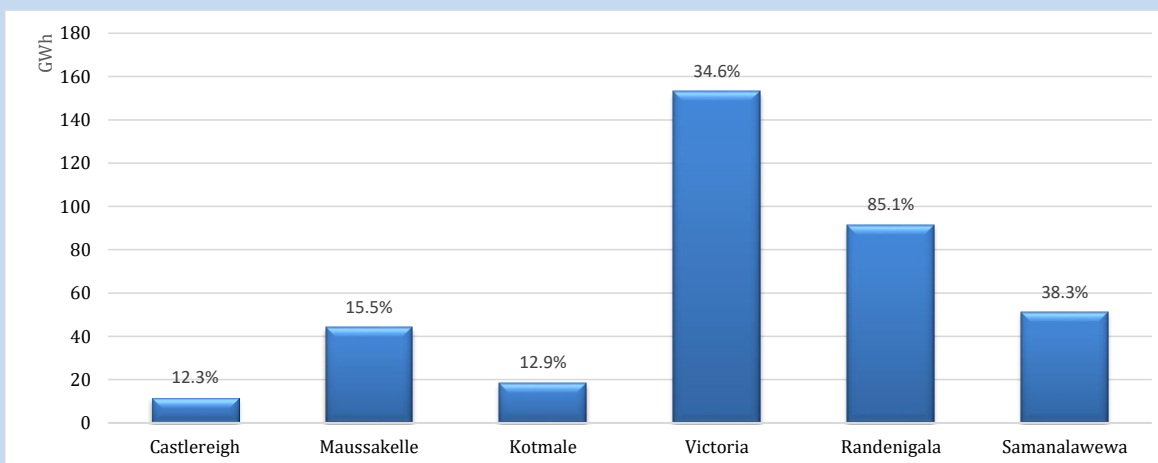


Night Peak*	2,215 MW
Day Peak	2,056 MW
Minimum Demand	1,414 MW

Above figures are excluding contribution from roof top solar, non telemetered solar and mini hydro plants

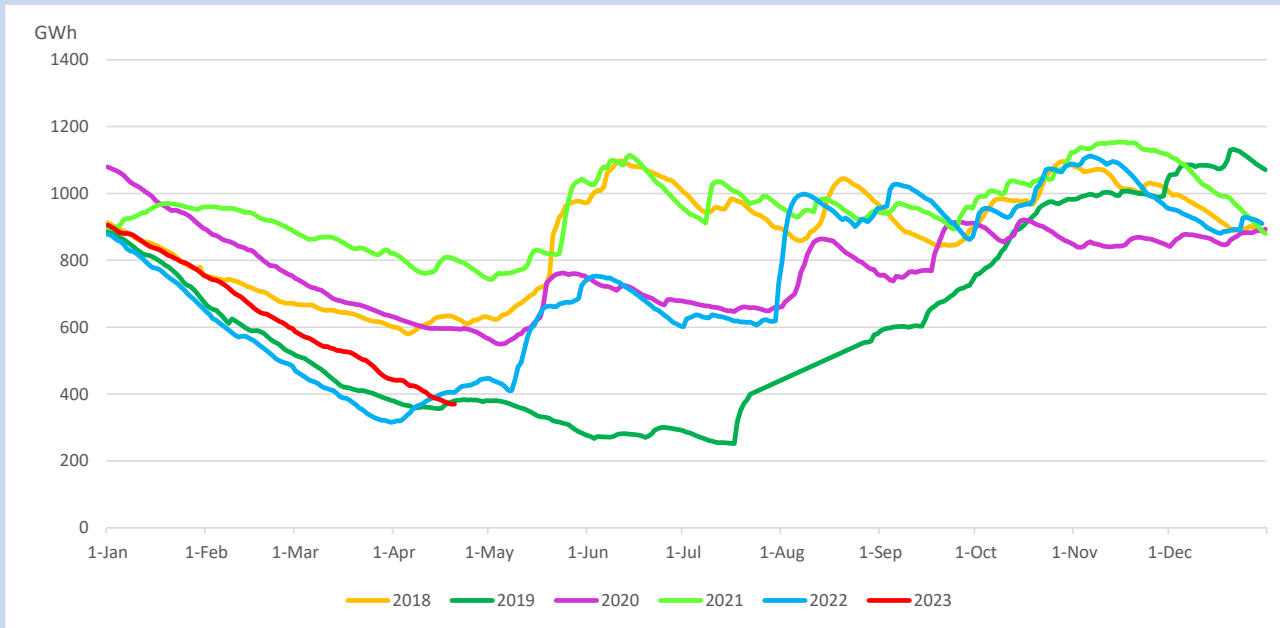
Reservoir Levels -

as at 06.00 Hr on April 22, 2023

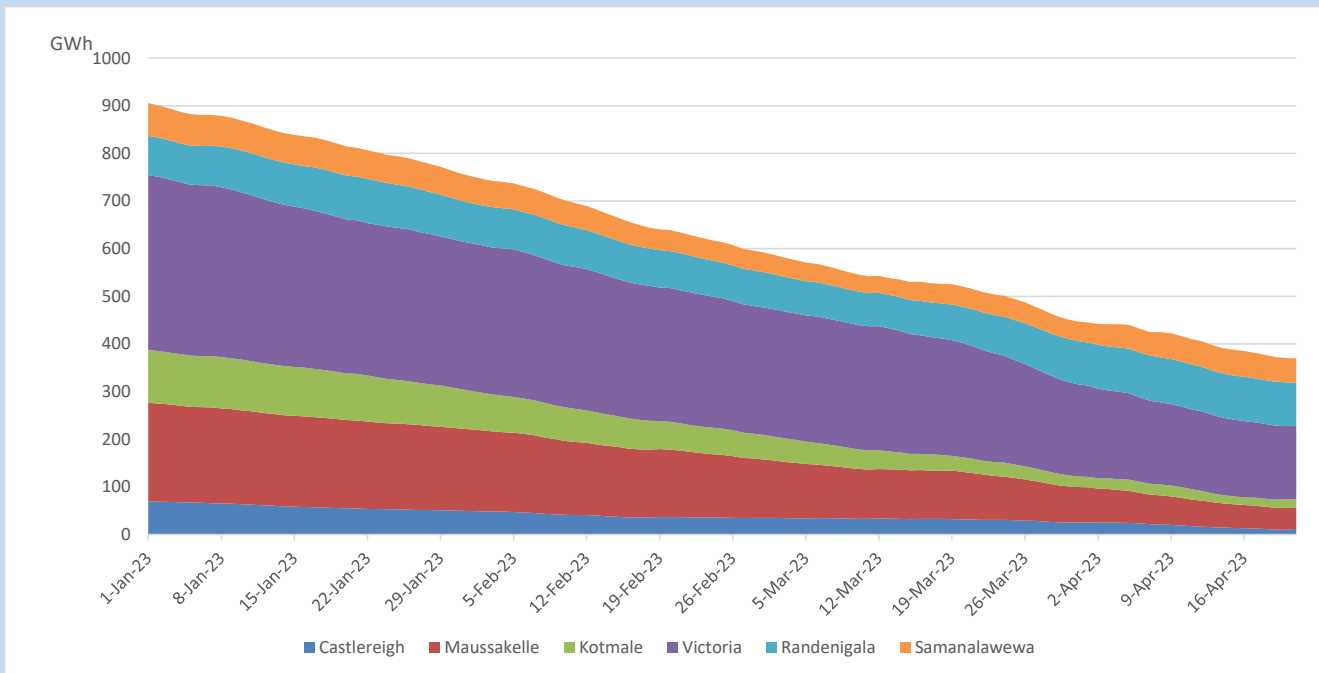


Total Reservoir Level	370 GWh
% of Total capacity	30.7%

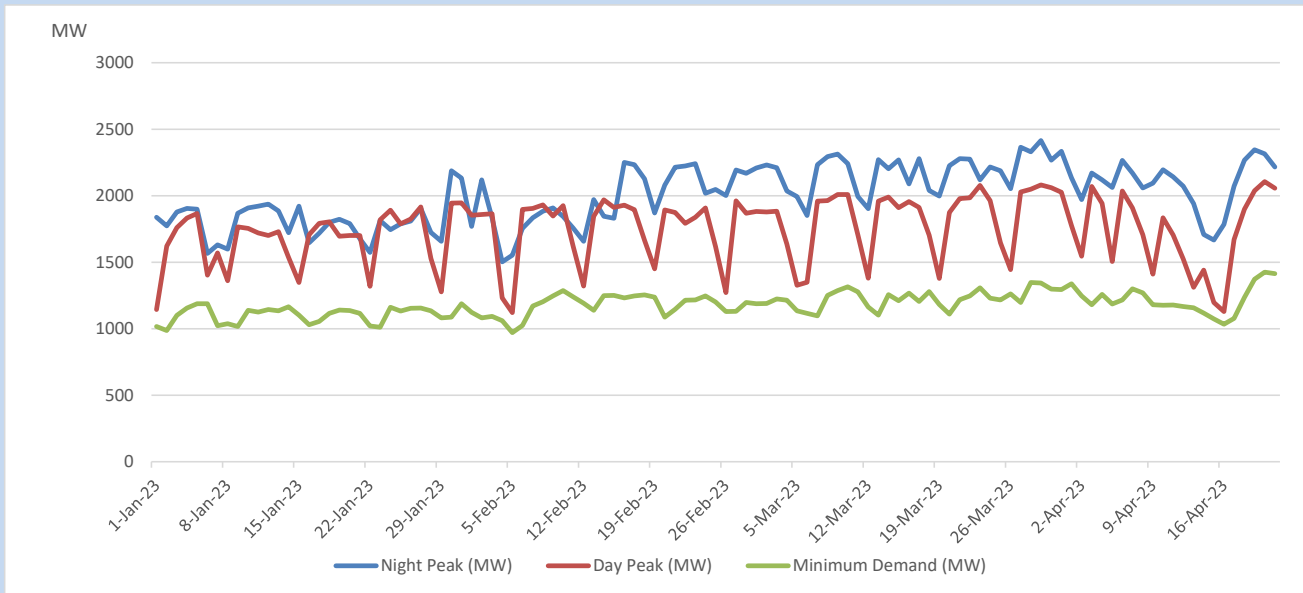
Comparison of Total Reservoir Storage Levels with Past Years



Variation of Major Hydro Reservoir Levels in the current year (GWh)



Variation of Demand during the current year

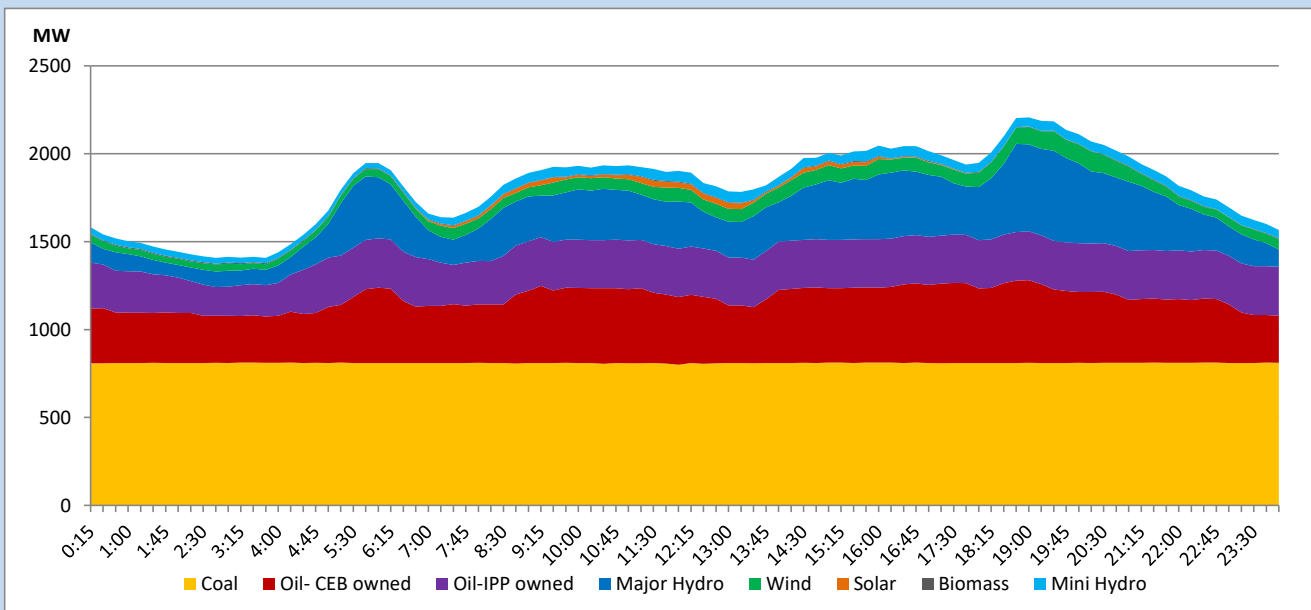


The above figures are excluding contribution from roof top solar, non telemetered solar and mini hydro plants

Daily Load Curve

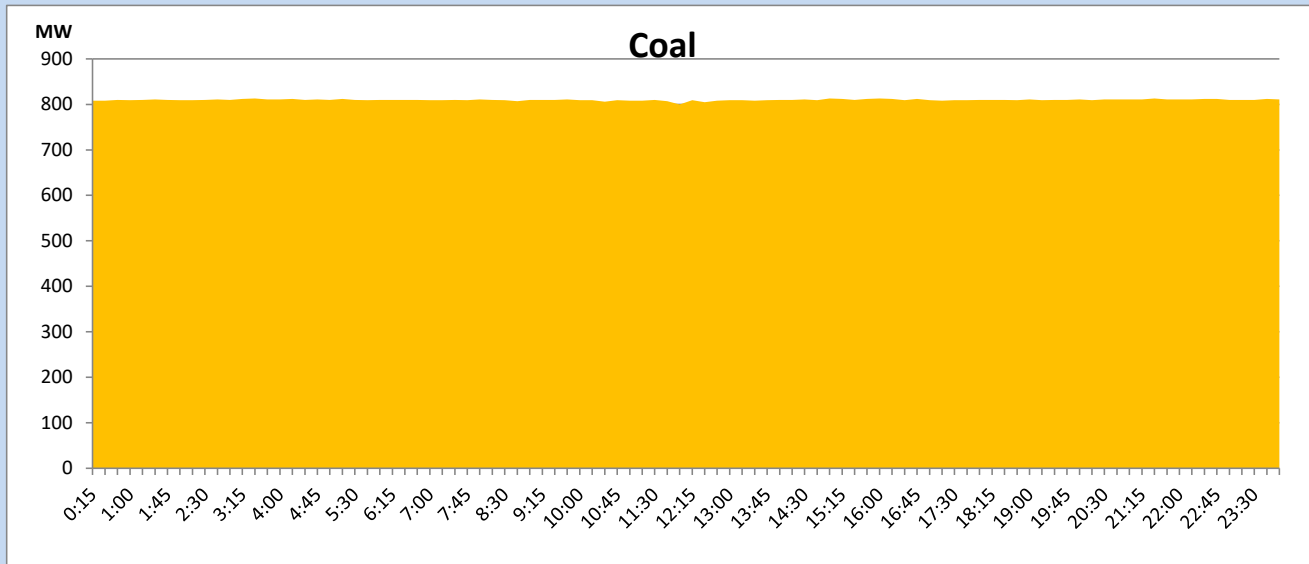
April 21, 2023

Solar and wind data is based on Telemetered Power Stations only



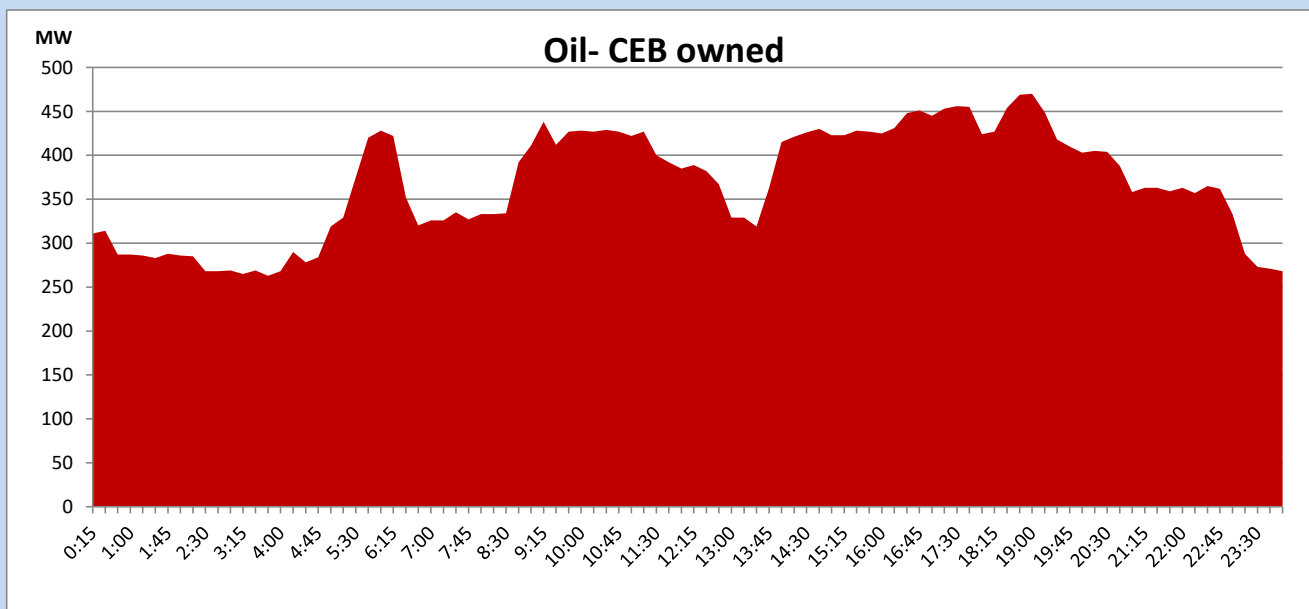
Coal Generation during

April 21, 2023



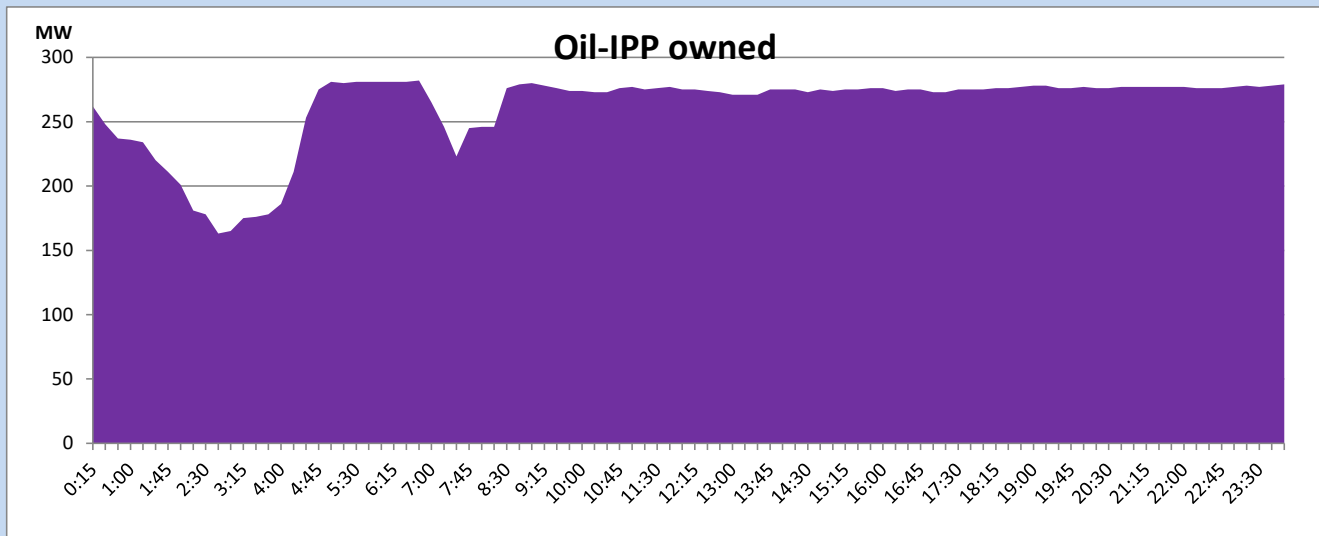
CEB Oil Plant Generation during

April 21, 2023



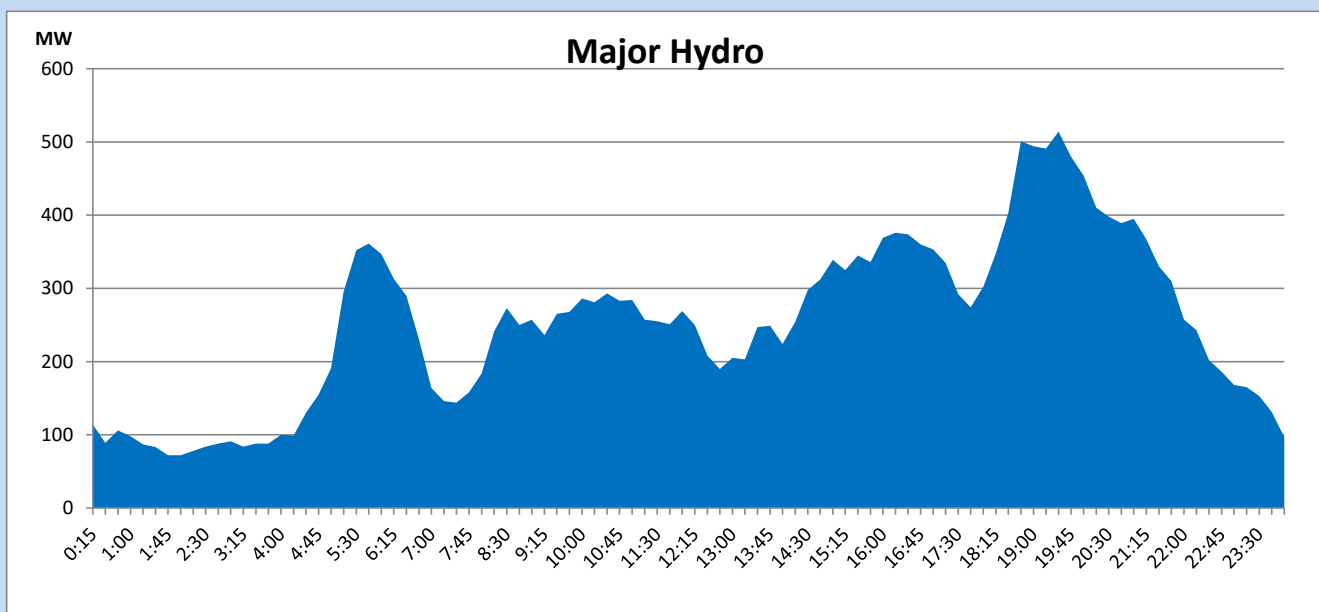
IPP Oil Plant Generation during

April 21, 2023



Major Hydro Generation during

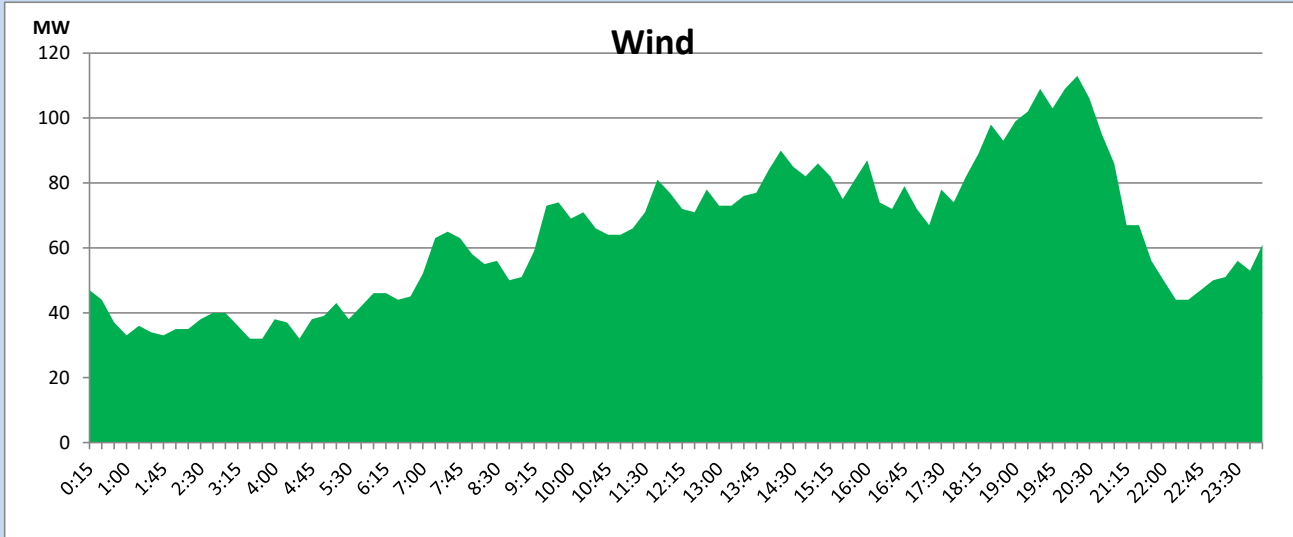
April 21, 2023



Wind Generation during

April 21, 2023

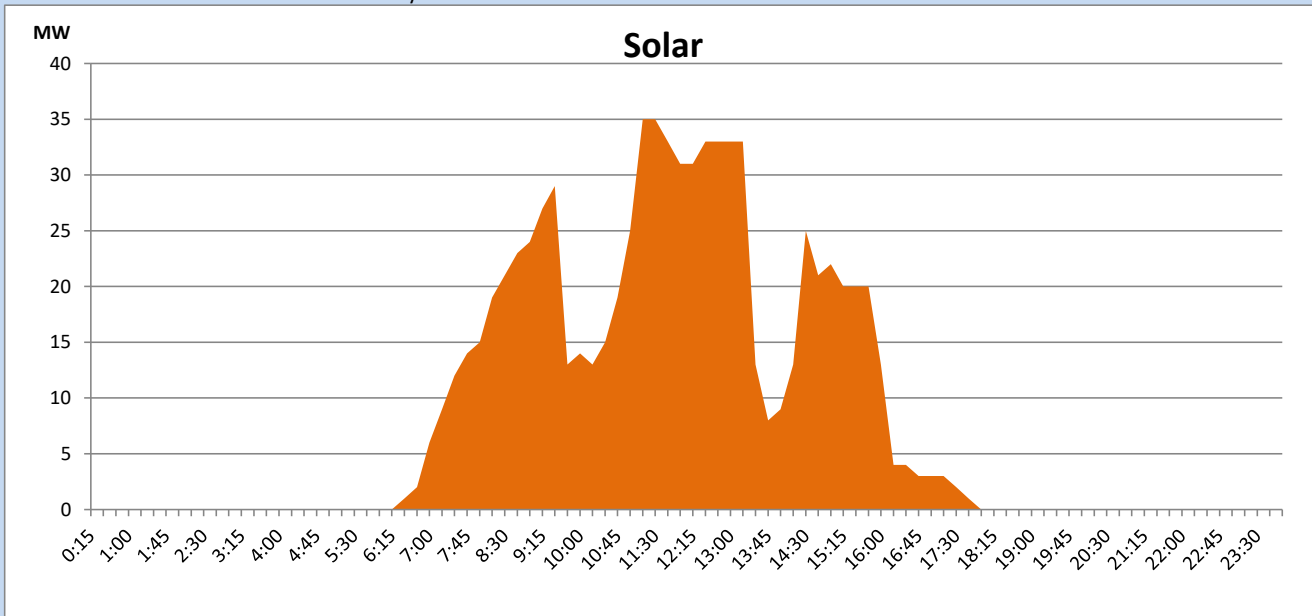
Based on Telemetered Power Stations only



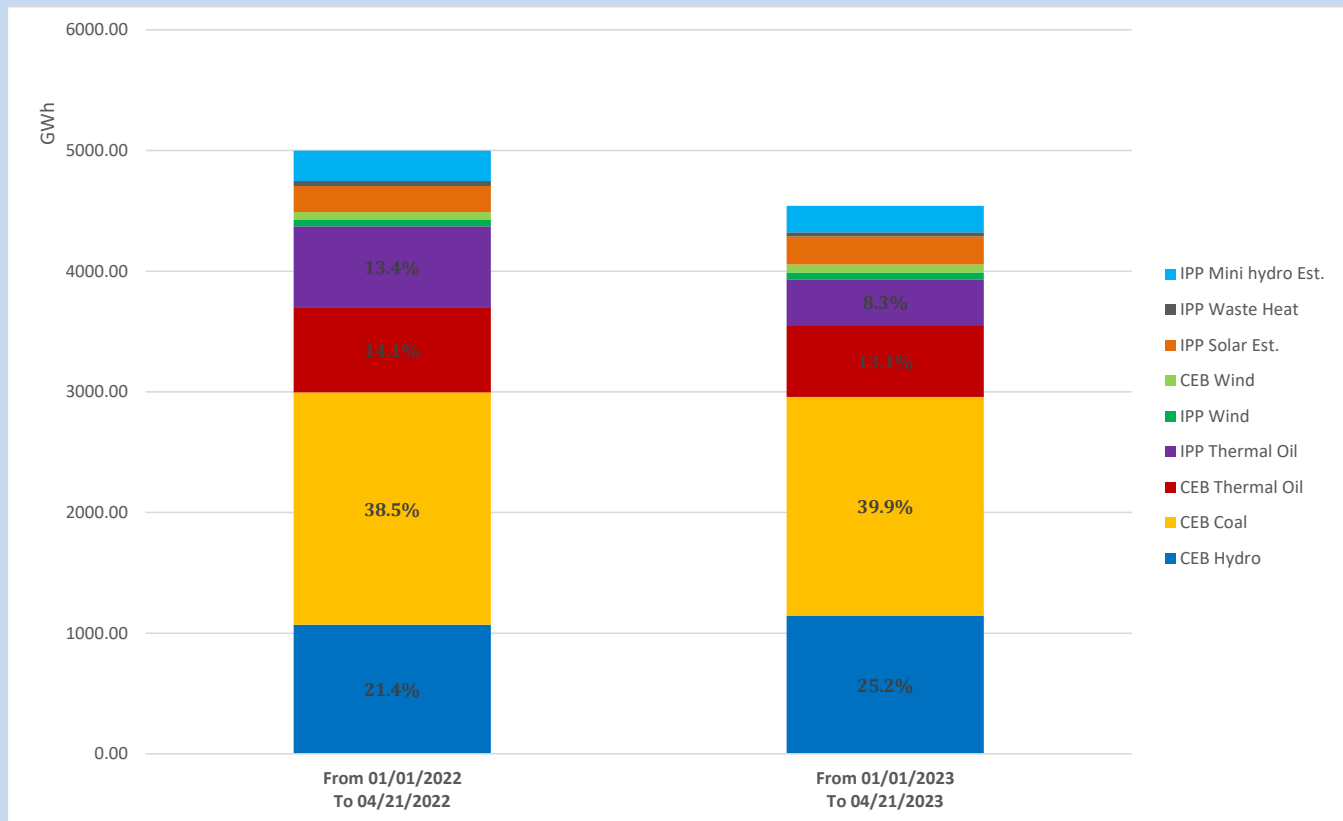
Solar Generation during

April 21, 2023

Based on Telemetered Power Stations only



Cumulative Dispatch Comparison with Last Year



The above figures are including contribution from roof top solar, non telemetered solar and mini hydro plants

Thermal Plant Fuel types

Power Station	Primary Fuel
CEB Thermal	
Sapugaskanda 1	Heavy Fuel
Sapugaskanda 2	Heavy Fuel
Kelanitissa Small Gas Turbines	Auto Diesel
GT 7 - Kelanitissa	Auto Diesel
Kelanitissa CCY	Naphtha or Diesel
Lakvijaya 1	Coal
Lakvijaya 2	Coal
Lakvijaya 3	Coal
Uthuru Janani	Heavy Fuel
Barge CEB	Heavy Fuel

Power Station	Primary Fuel
Private Thermal	
West Coast	Auto Diesel / Heavy Fuel

Major Incidents reported during the day

April 21, 2023

- 1) Power Barge unit 01 and 02 resumed generation at 06:58hrs and 14:06hrs respectively.
- 2) Uthuru Jananai unit 01 tripped at 09:36hrs due to high HT water temperature and resumed generation at 18:12hrs
- 3) Hambanthota DPP availability reduced up to 8MW from 10:42hrs to 22.57hrs, due to insufficient fuel supply.
- 4) Rantembe unit 01 tripped at 15:47hrs due to tripping of cooling water pump. Rantembe unit 01 was made available at 15:57hrs.
- 5) Sapugaskanda P/S unit 09 and 06 resumed generation at 17:11hrs and 23:01hrs respectively. Sapugaskanda P/S unit 06 tripped again at 00:12hrs(22.04.2023) due to high oil mist and resumed generation at 01:42hrs(22.04.2023). Sapugaskanda P/S unit 11 tripped at 00:18hrs(22.04.2023) due