

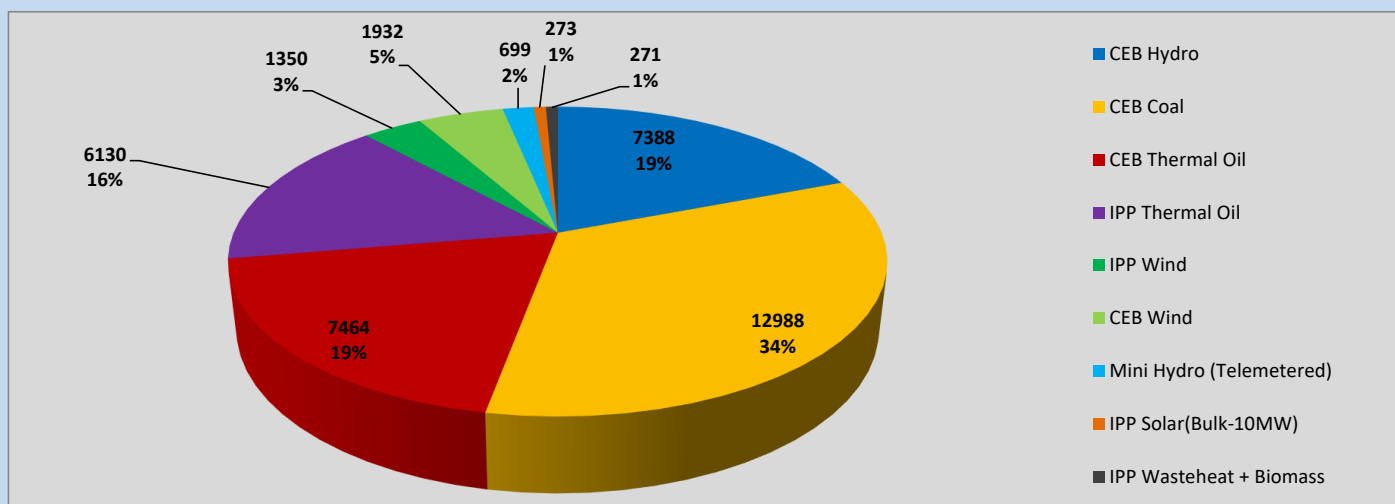
Generation and Reservoirs Statistics

May 20, 2023



PUBLIC UTILITIES COMMISSION OF SRI LANKA

Daily Generation Mix in MWh



Total Generation (Excluding estimated figures) =

38,495 MWh

Estimated figures of CEB generation report

Estimated unserved energy = 0.00 GWh

Estimated Mini Hydro (Non telemetered) = 3291 MWh

Estimated IPP Solar PV (Bulk 1-10MW) = 304 MWh

Estimated Solar Roof Top PV = 1920 MWh

Cumulative Dispatch

Following data excludes the contribution from roof top solar, non telemetered solar and mini hydro plants

For Current Month

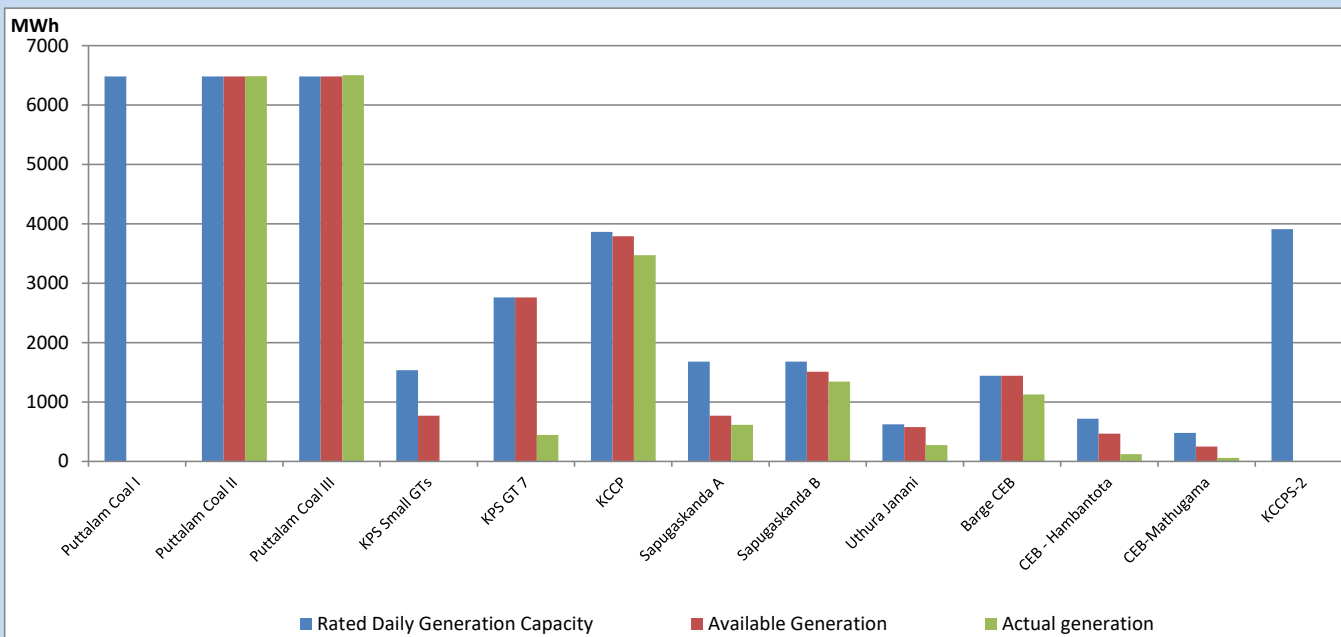
Category	Dispatch (GWh)	
CEB Hydro	177	23.50%
CEB Coal	331	44.09%
CEB Thermal Oil	100	13.37%
IPP Thermal	66	8.78%
SPP Wind	21	2.80%
CEB Wind	23	3.08%
Mini Hydro (Telemetered)	20	2.67%
IPP Solar (Bulk-10MW)	5	0.71%
IPP Wasteheat + BMP	7	0.98%
Total	751	

For Current Year

Category	Dispatch (GWh)	
CEB Hydro	1,378	25.97%
CEB Coal	2,318	43.70%
CEB Thermal Oil	756	14.24%
IPP Thermal	483	9.11%
SPP Wind	79	1.49%
CEB Wind	93	1.76%
Mini Hydro (Telemetered)	115	2.18%
IPP Solar (Bulk-10MW)	40	0.75%
IPP Wasteheat	42	0.80%
Total	5,305	

CEB owned Thermal Plant Dispatch

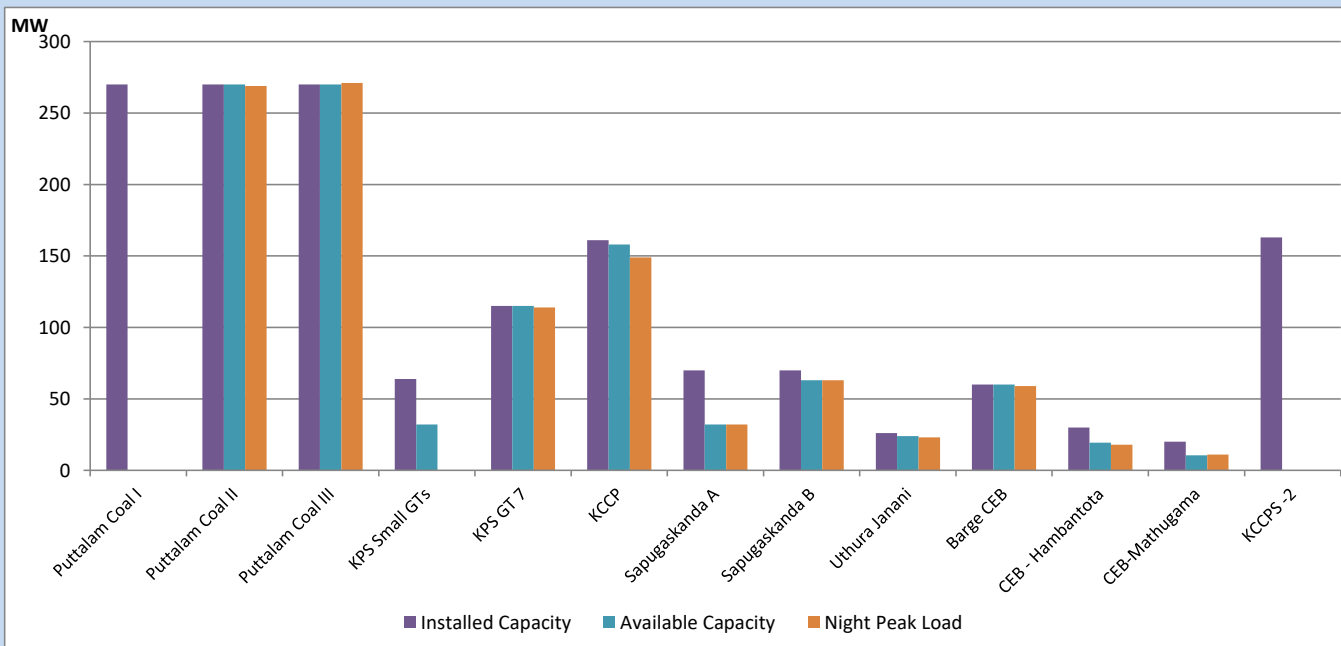
May 20, 2023



Available Generation is estimated based on plant availability at 6.00am on

May 21, 2023

CEB owned Thermal Plant Loading at the Night Peak



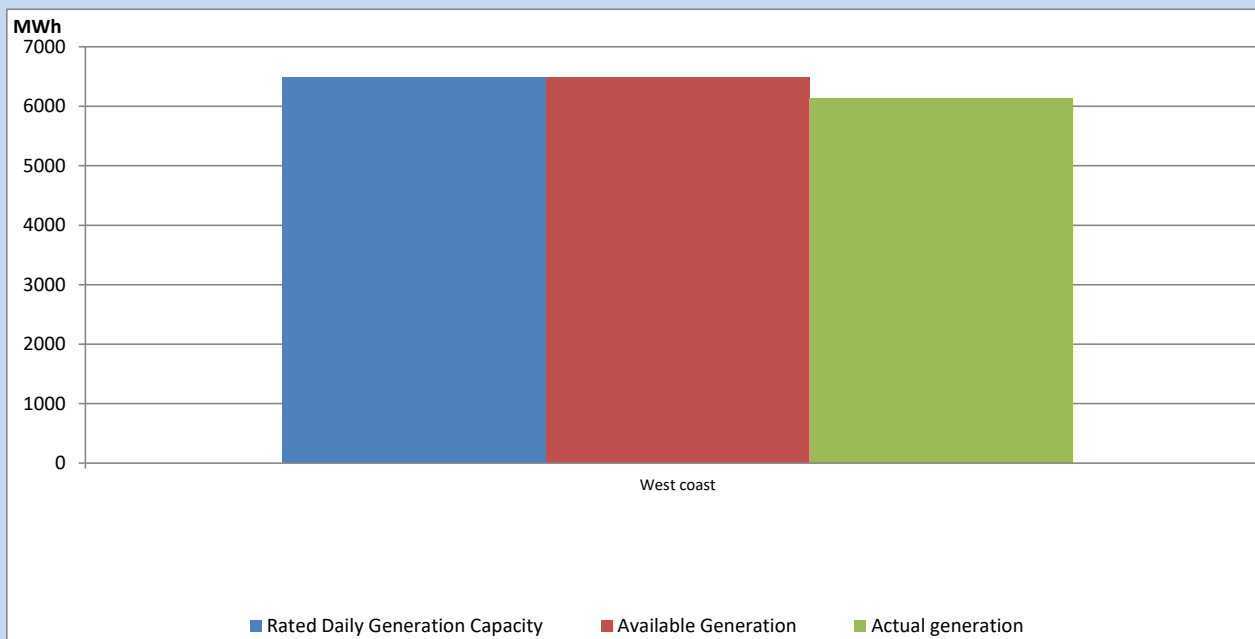
Note-

Plant availability is recorded at 6.00 am on

May 21, 2023

IPP owned Thermal Plant Dispatch

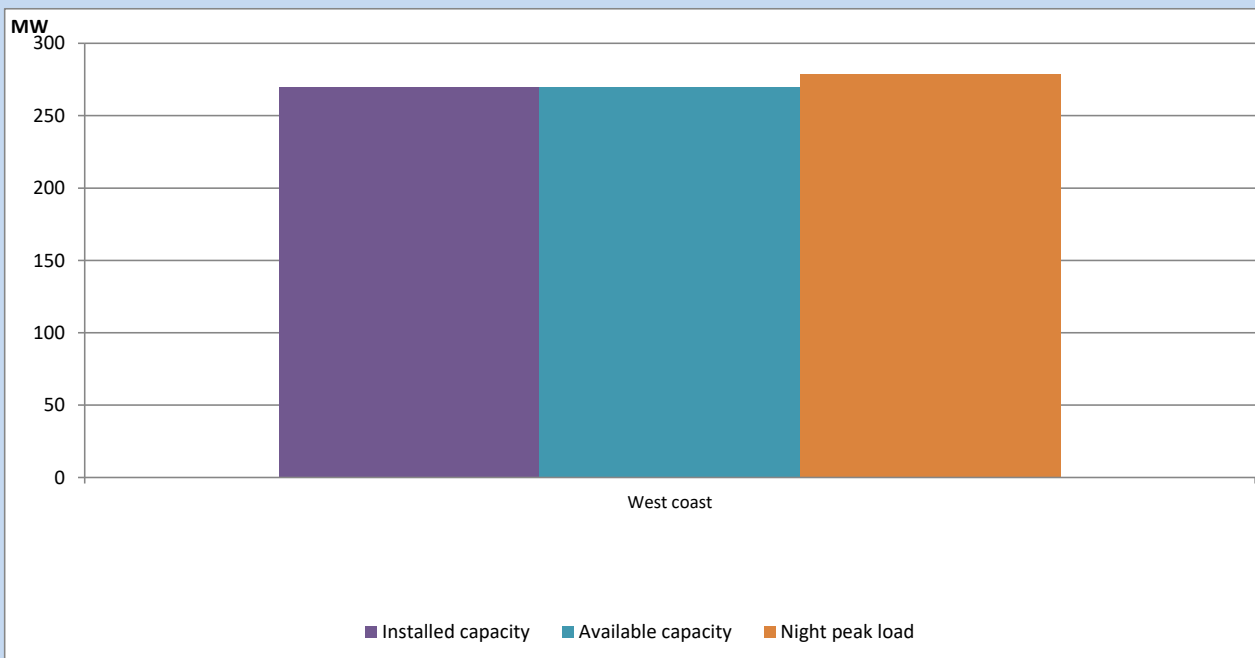
May 20, 2023



Available Generation is estimated based on plant availability at 6.00am on

May 21, 2023

IPP owned Thermal Plant Loading at the Night Peak

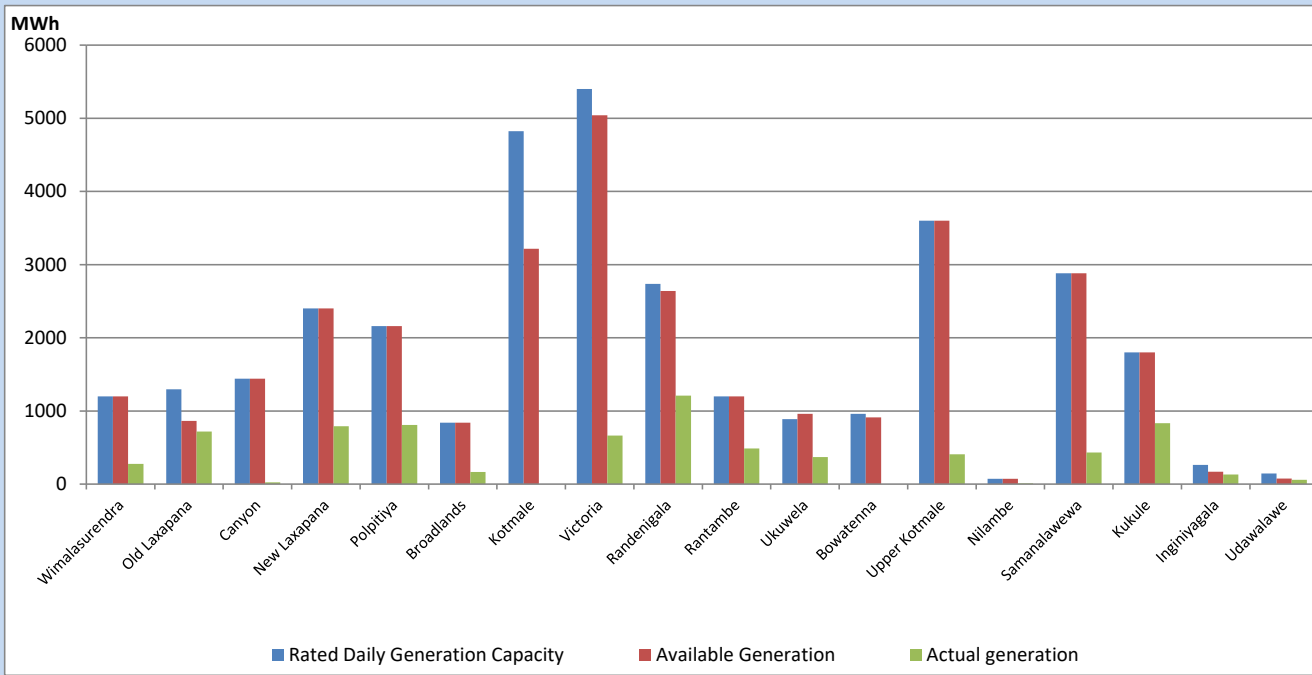


Note- Plant availability is recorded at 6.00 am on

May 21, 2023

Major Hydro Plant Dispatch

May 20, 2023

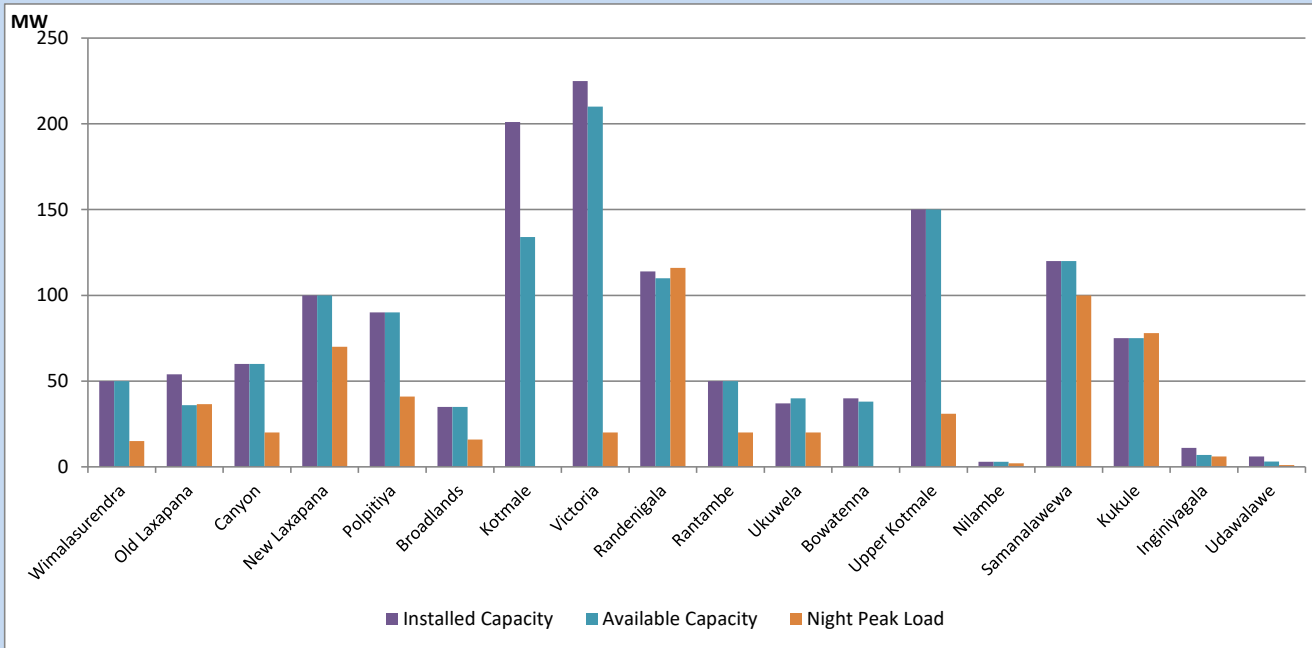


Available Generation is estimated based on plant availability at 6.00am on
Broadlands power plant is operating in the Commissioning Stage

May 21, 2023

Major Hydro Plant Loading at Night Peak

May 20, 2023



Note- Plant availability is recorded at 6.00 am on
Broadlands power plant is operating in the Commissioning Stage

May 21, 2023

Summary of Major Plant performance

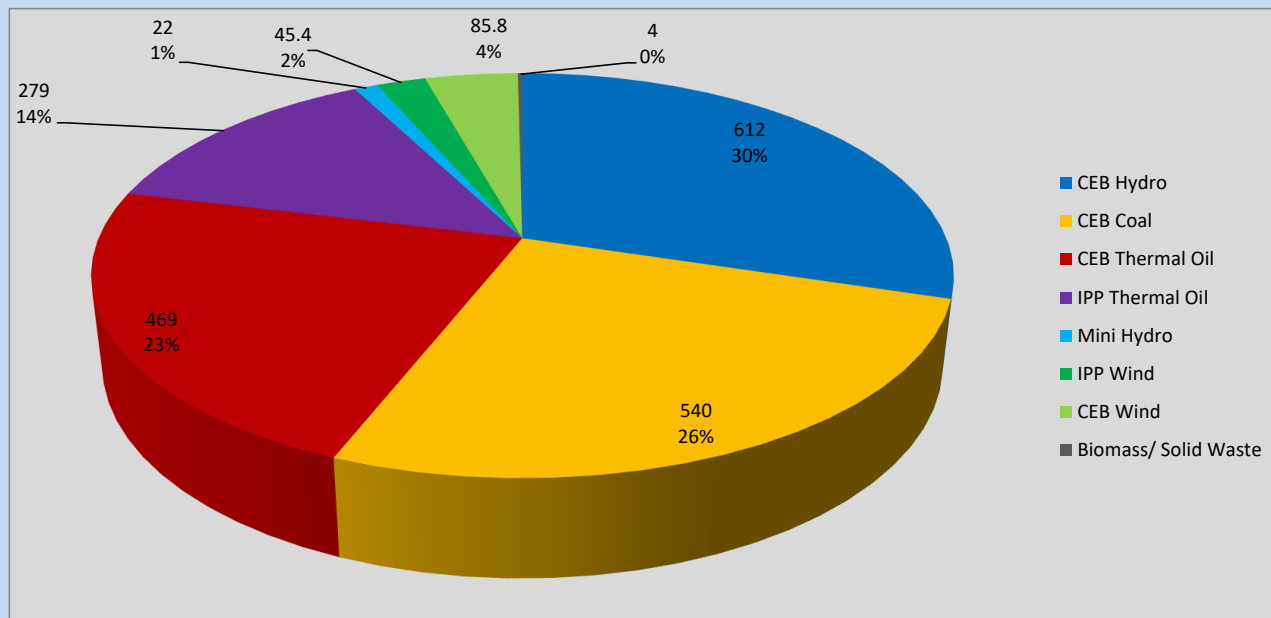
Plant	Installed Capacity	Plant Availability	Night peak Load	Plant Dispatch
	(MW)	(MW)	(MW)	(MWh)
Wimalasurendra	50	50	15	278
Old Laxapana	54	36	37	720
Canyon	60	60	20	23
New Laxapana	100	100	70	790
Polpitiya	90	90	41	810
Broadlands	35	35	16	167
Kotmale	201	134	0	0
Victoria	225	210	20	662
Randenigala	114	110	116	1,210
Rantambe	50	50	20	488
Ukuwela	37	40	20	371
Bowatenna	40	38	0	0
Upper Kotmale	150	150	31	407
Nilambe	3	3	2	9
Samanalawewa	120	120	100	432
Kukule	75	75	78	833
Inginiyagala	11	7	6	130
Udawalawe	6	3	1	58
Puttalam Coal I	270	0	0	0
Puttalam Coal II	270	270	269	6,484
Puttalam Coal III	270	270	271	6,504
KPS Small GTs	64	32	0	0
KPS GT 7	115	115	114	446
KCCP	161	158	149	3,473
Sapugaskanda A	70	32	32	616
Sapugaskanda B	70	63	63	1,344
Uthura Janani	26	24	23	275
Barge CEB	60	60	59	1,128
CEB-Hambantota	30	19	18	123
CEB-Mathugama	20	11	11	59
ACE Matara	24	0	0	0
Asia Power	50	0	0	0
KCCPS -2	163	0	0	0
West Coast	270	270	279	6,130
Nothern Power	36	0	0	0
ACE Embilipitiya	93	0	0	0
Total	3,483	2,635	2,037	38,495

Plant availability is the availability recorded at 6 am on

May 21, 2023

Contribution to the Night Peak in MW

May 20, 2023

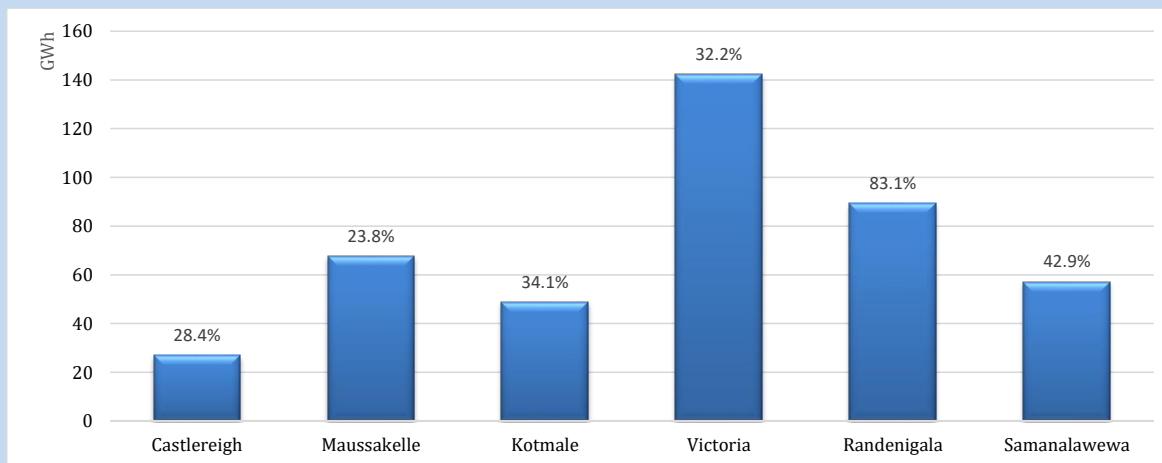


Night Peak*	2,056 MW
Day Peak Maximum Demand	1,671 MW
Day Peak Minimum Demand	1,475 MW
Off Peak Minimum Demand	1,268 MW

Above figures are excluding contribution from roof top solar, non telemetered solar and mini hydro plants

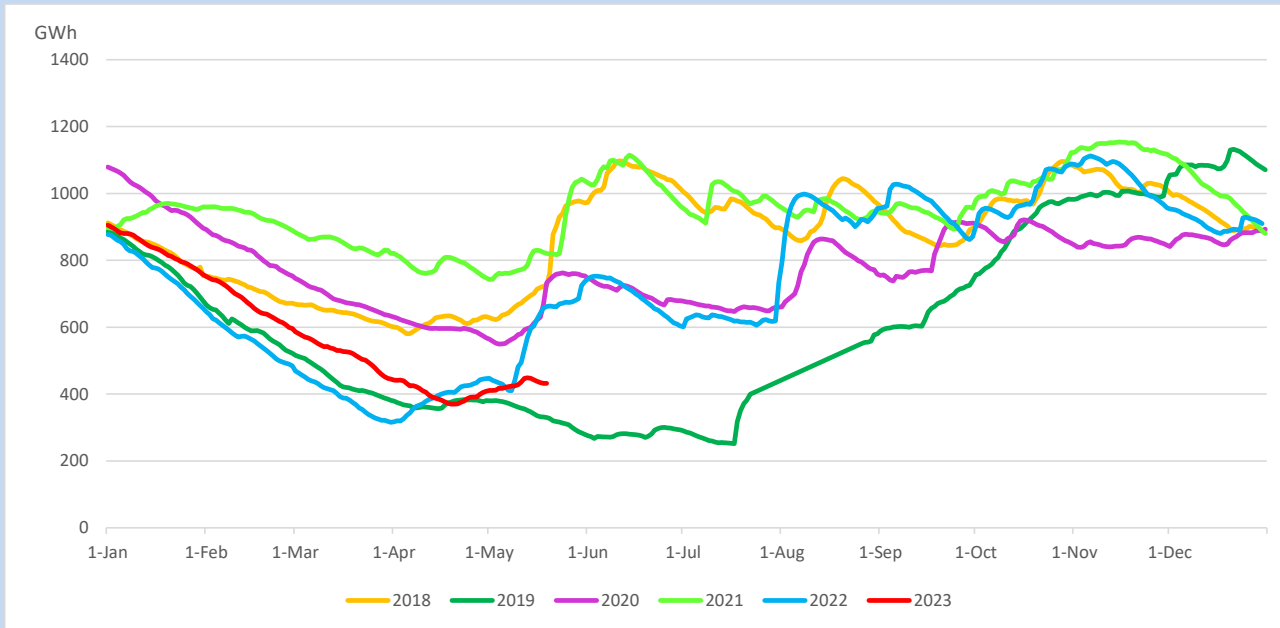
Reservoir Levels -

as at 06.00 Hr on May 21, 2023

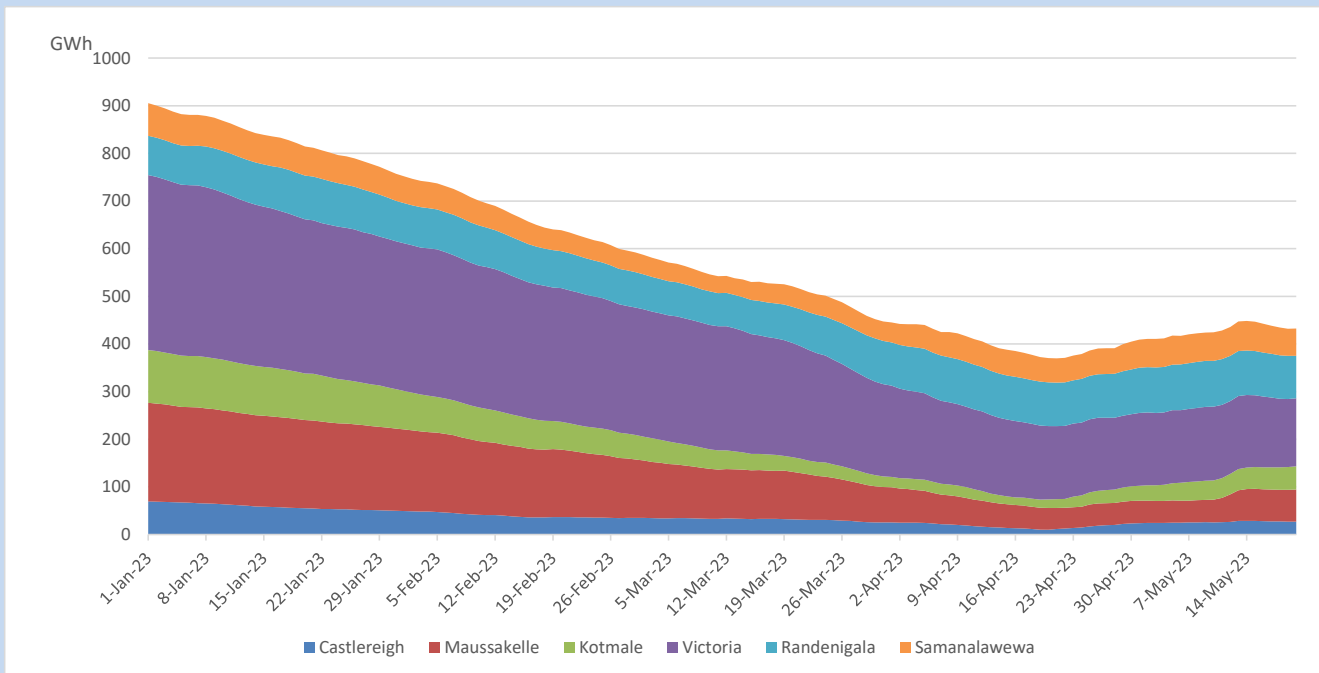


Total Reservoir Level	432.2 GWh
% of Total capacity	35.9%

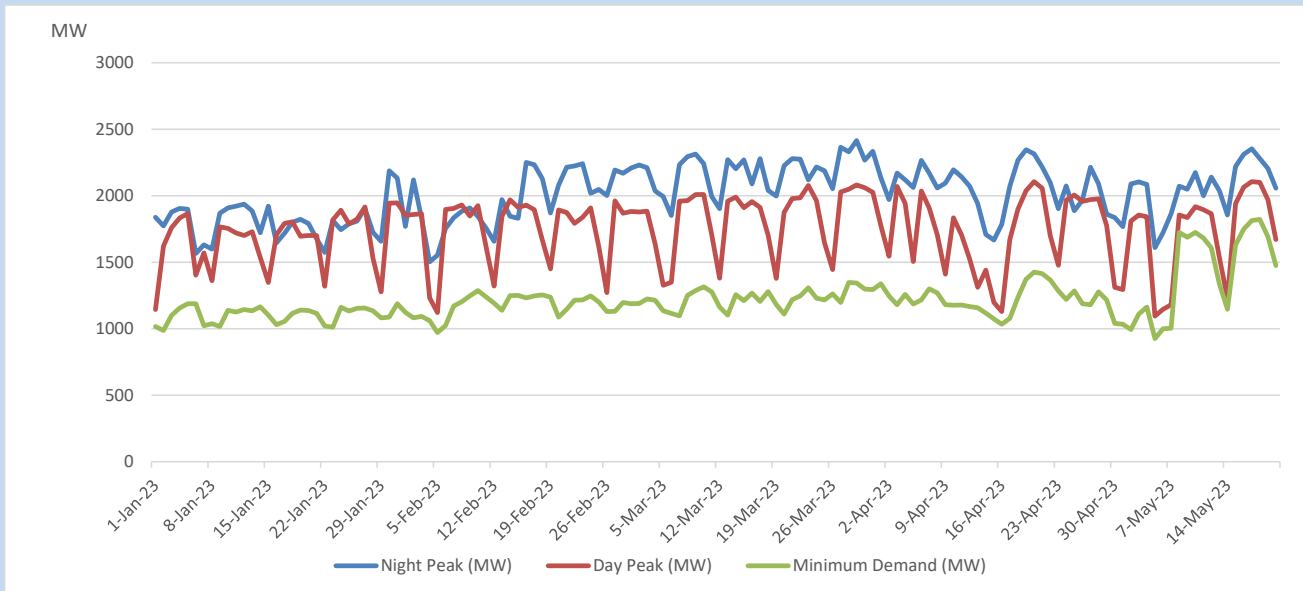
Comparison of Total Reservoir Storage Levels with Past Years



Variation of Major Hydro Reservoir Levels in the current year (GWh)



Variation of Demand during the current year

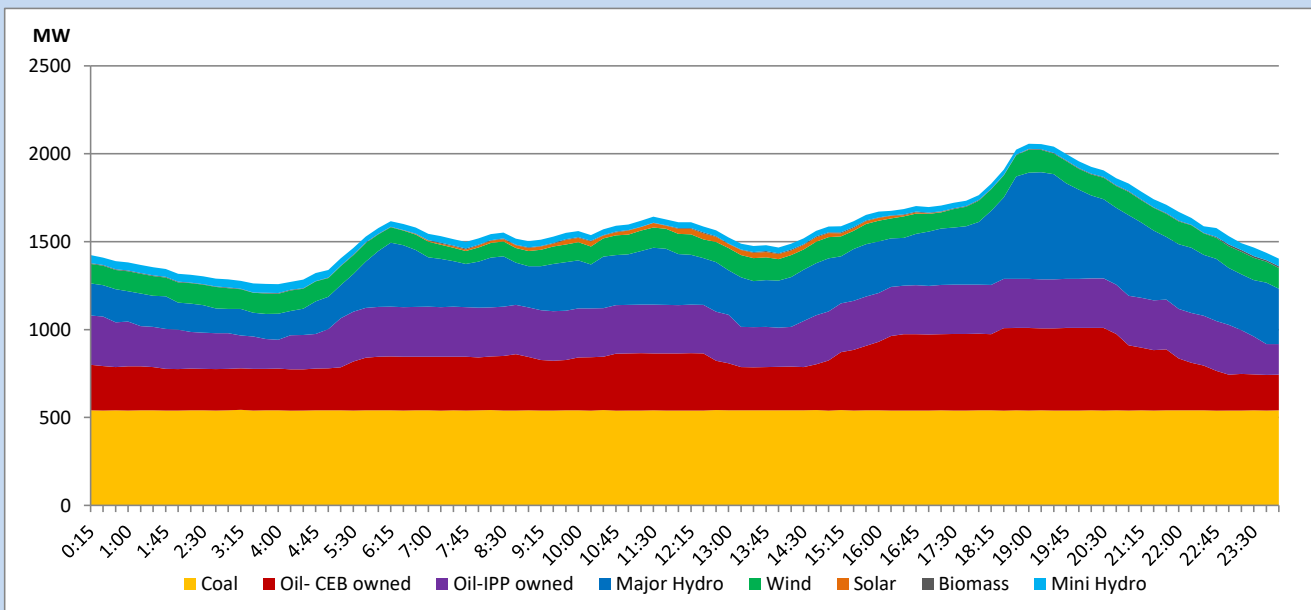


The above figures are excluding contribution from roof top solar, non telemetered solar and mini hydro plants

Daily Load Curve

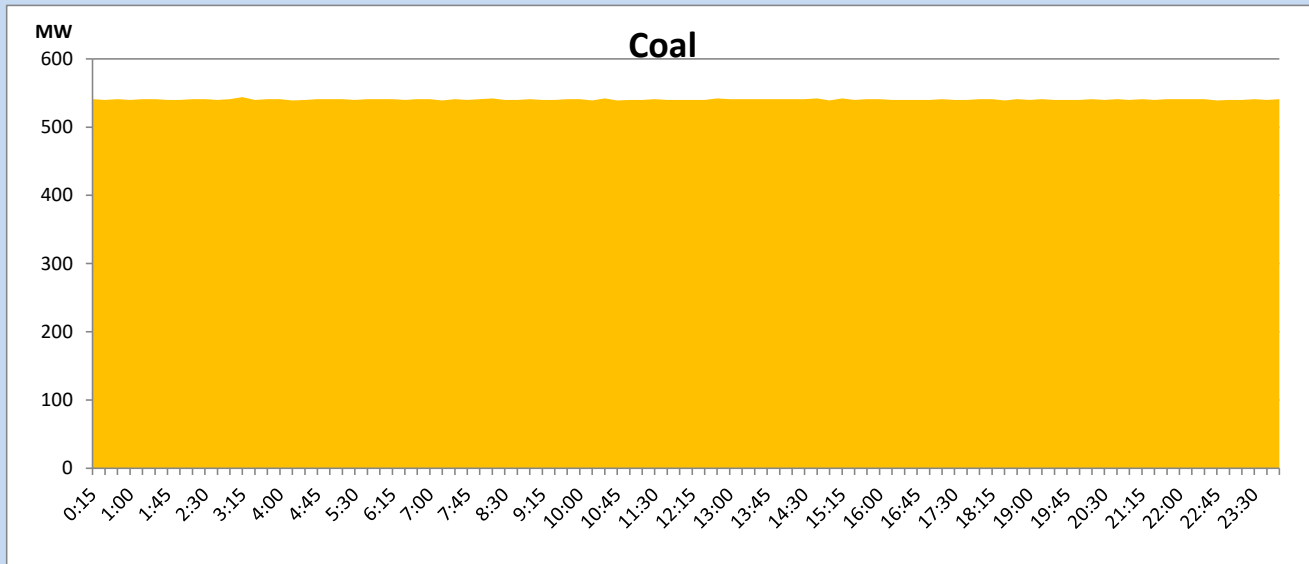
May 20, 2023

Solar and wind data is based on Telemetered Power Stations only



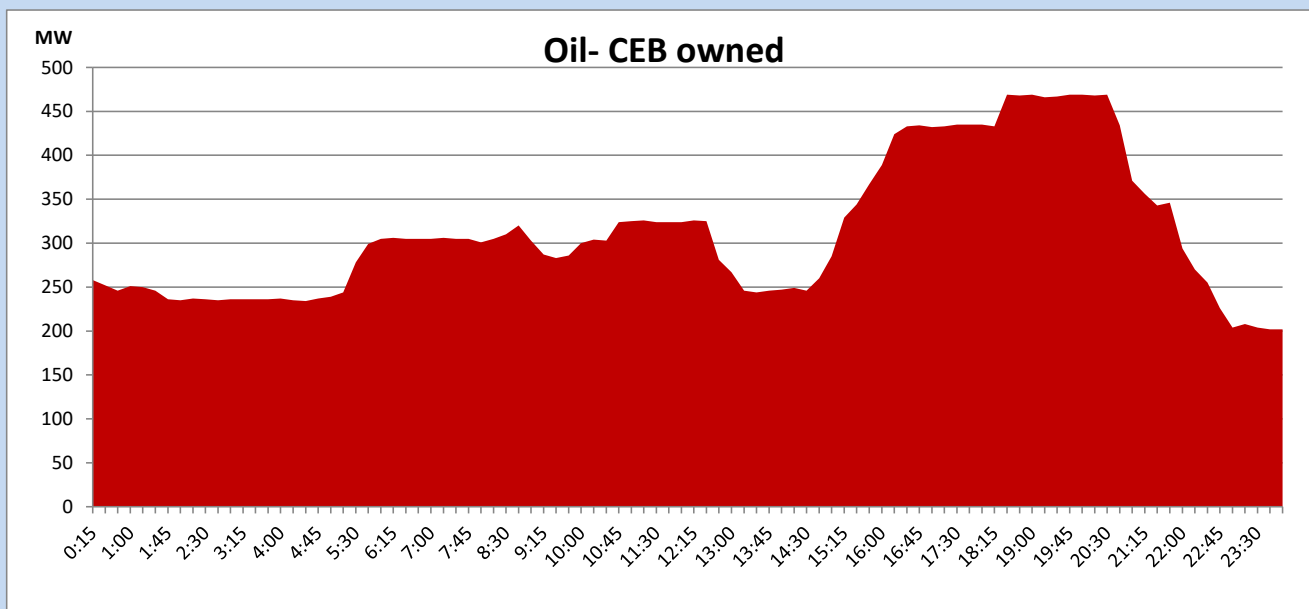
Coal Generation during

May 20, 2023



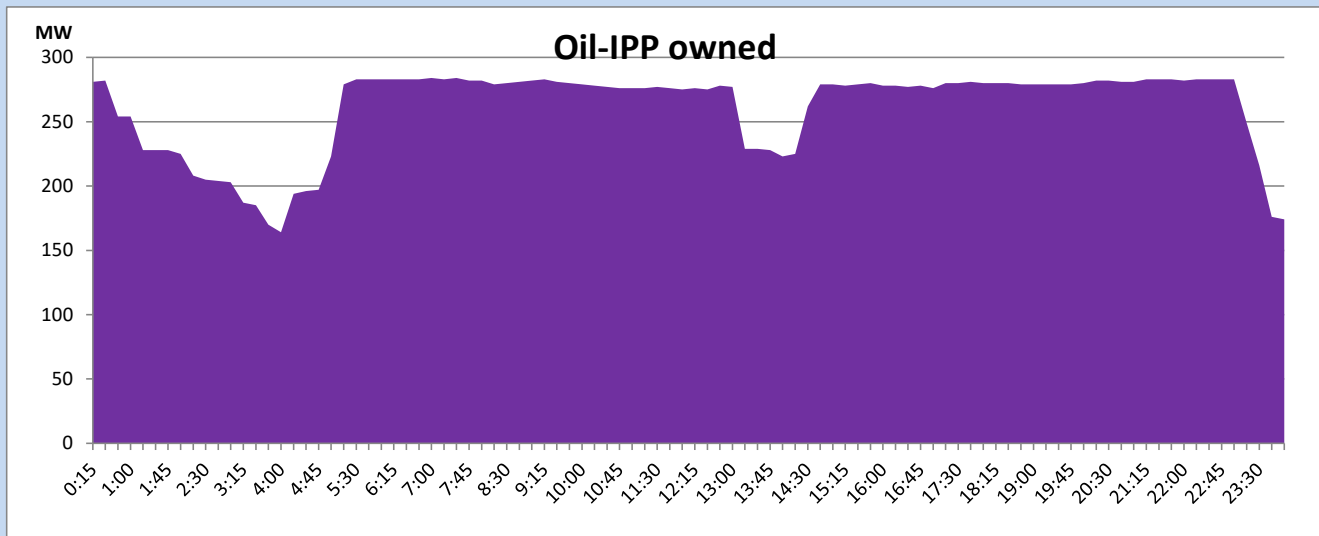
CEB Oil Plant Generation during

May 20, 2023



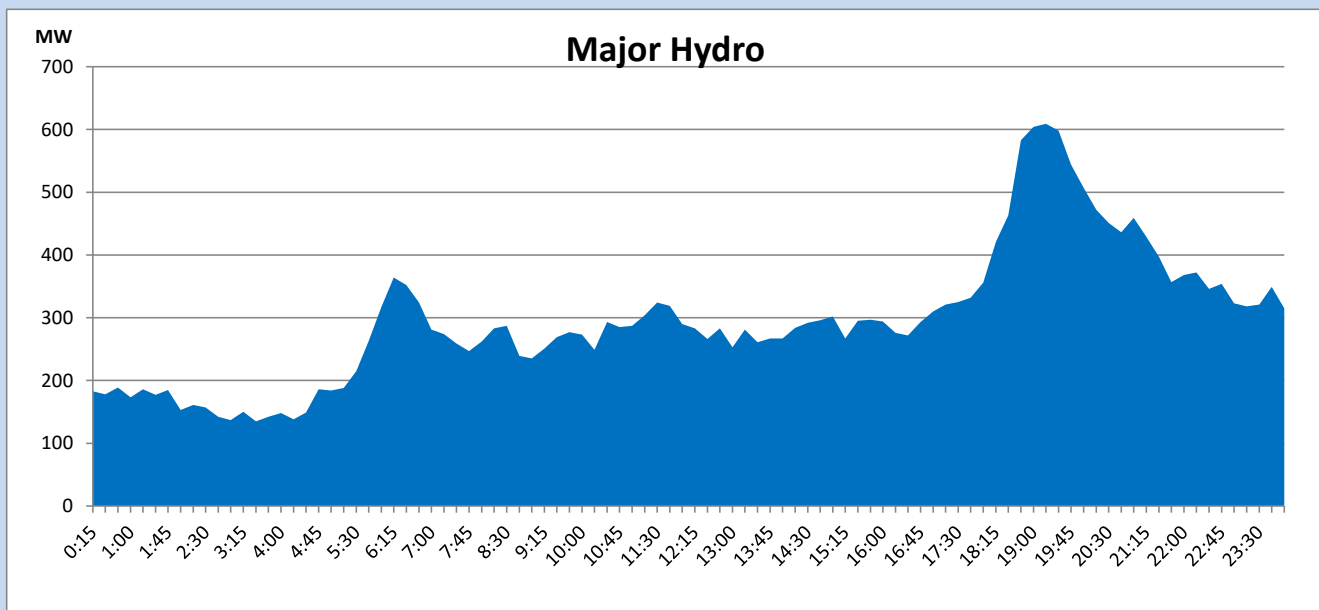
IPP Oil Plant Generation during

May 20, 2023



Major Hydro Generation during

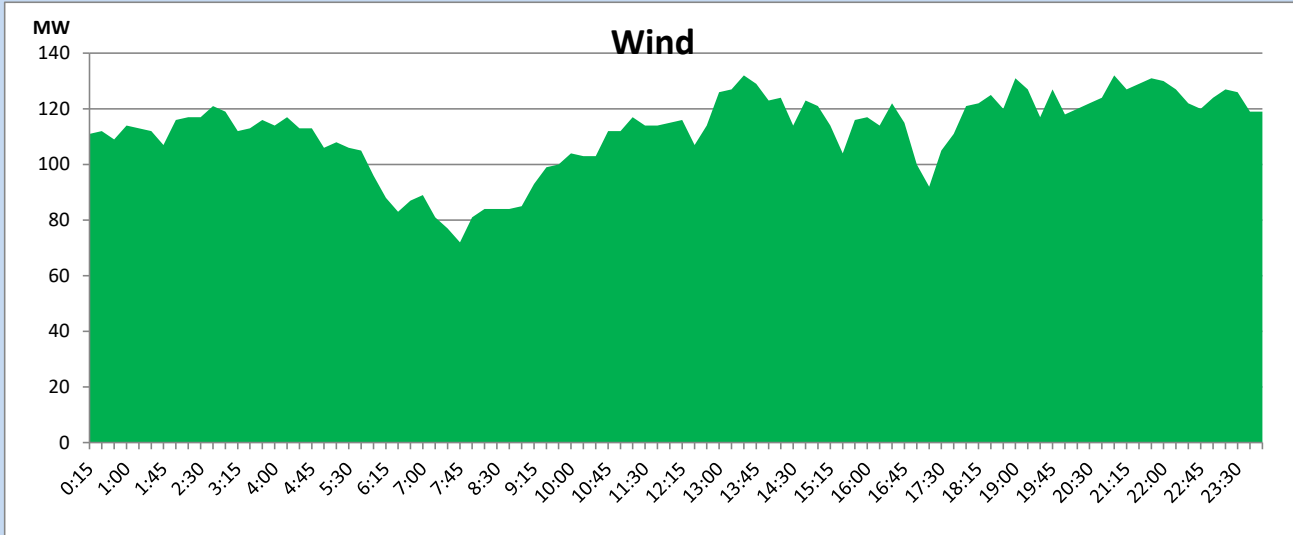
May 20, 2023



Wind Generation during

May 20, 2023

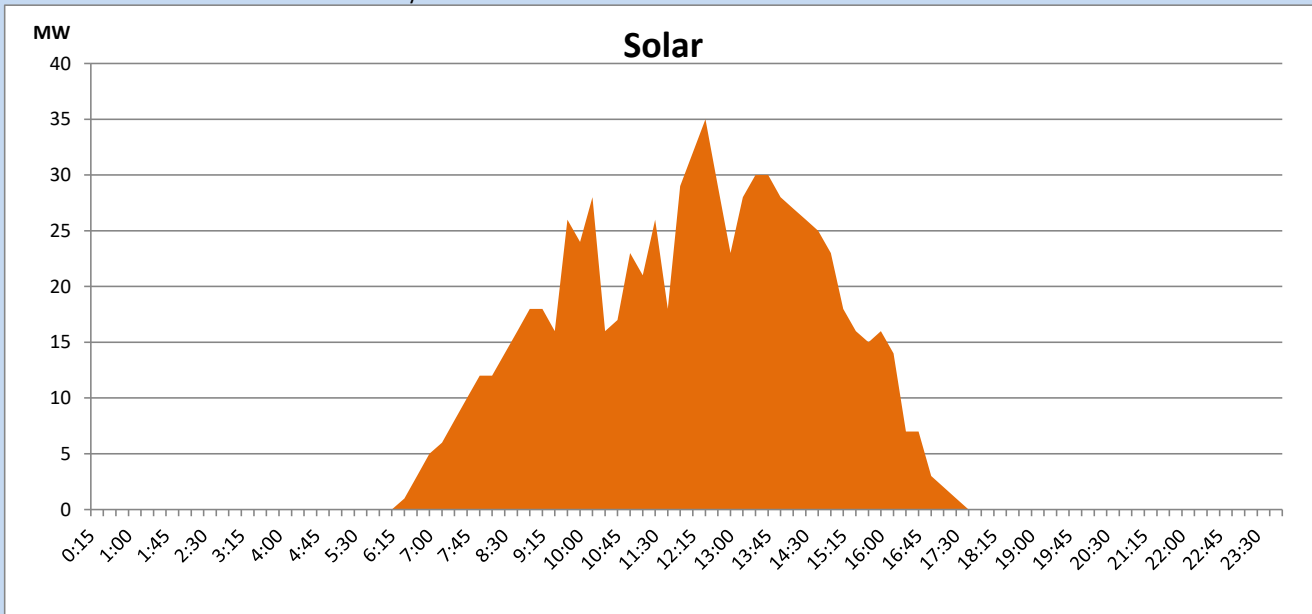
Based on Telemetered Power Stations only



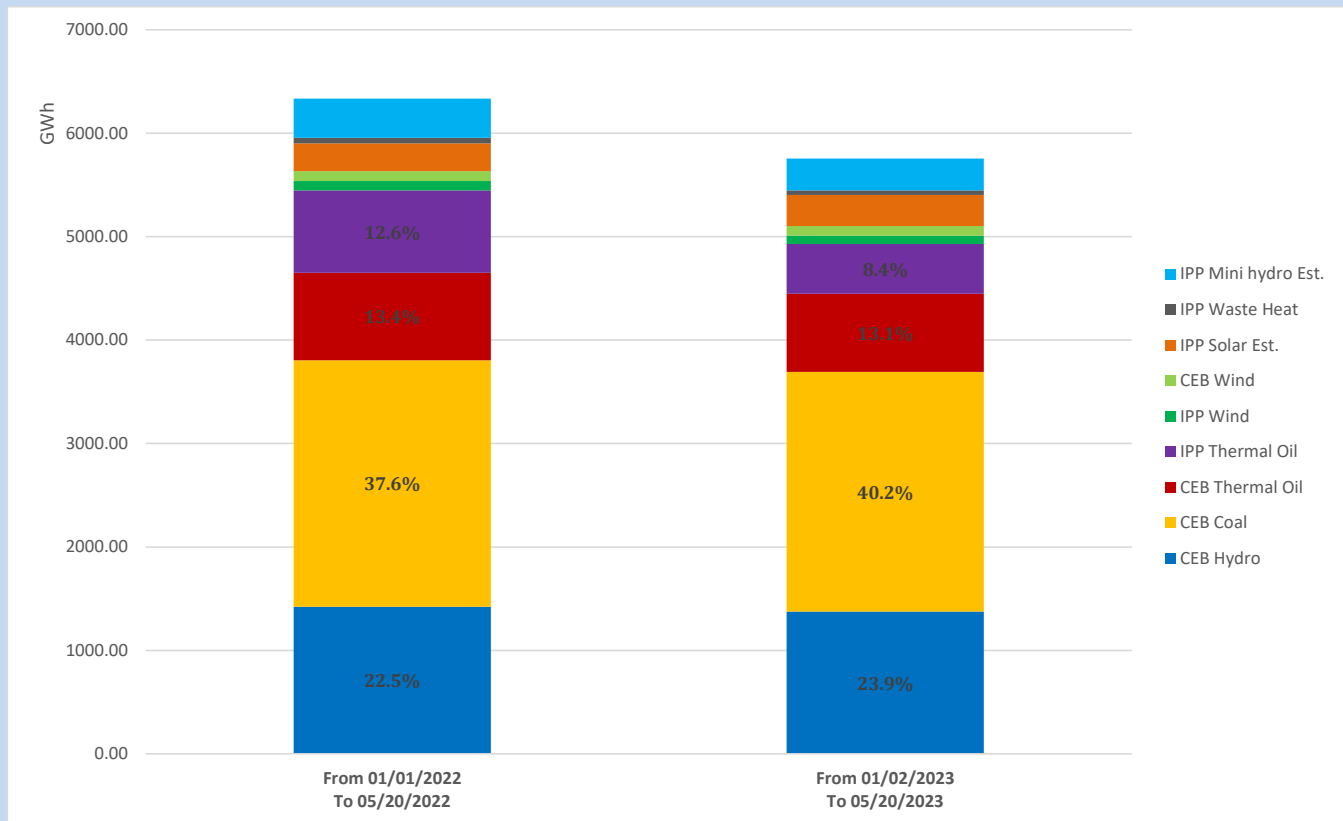
Solar Generation during

May 20, 2023

Based on Telemetered Power Stations only



Cumulative Dispatch Comparison with Last Year



The above figures are including contribution from roof top solar, non telemetered solar and mini hydro plants

Thermal Plant Fuel types

Power Station	Primary Fuel
CEB Thermal	
Sapugaskanda 1	Heavy Fuel
Sapugaskanda 2	Heavy Fuel
Kelanitissa Small Gas Turbines	Auto Diesel
GT 7 - Kelanitissa	Auto Diesel
Kelanitissa CCY	Naphtha or Diesel
Lakvijaya 1	Coal
Lakvijaya 2	Coal
Lakvijaya 3	Coal
Uthuru Janani	Heavy Fuel
Barge CEB	Heavy Fuel
KCCPS -2	Auto Diesel

Power Station	Primary Fuel
Private Thermal	
West Coast	Auto Diesel / Heavy Fuel

Major Incidents reported during the day

May 20, 2023

- 1) Polpitiya-Thulhiriya-Athurugiriya 132kV cct tripped and A/R from all ends at 16:13 hrs due to the operation of distance protection.