

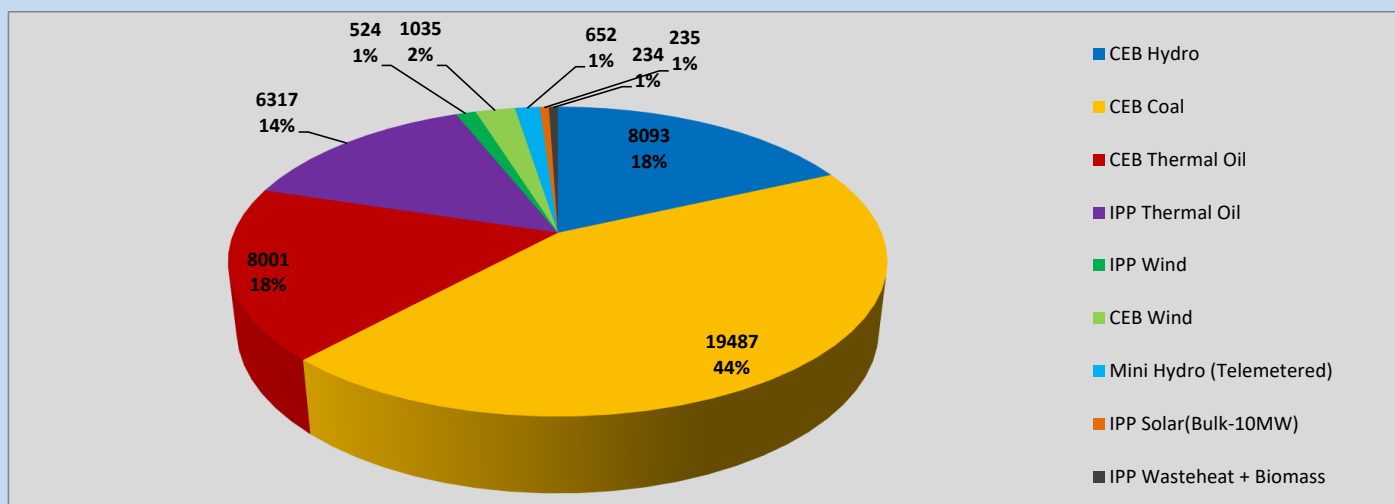
Generation and Reservoirs Statistics

April 20, 2023



PUBLIC UTILITIES COMMISSION OF SRI LANKA

Daily Generation Mix in MWh



Total Generation (Excluding estimated figures) =

44,578 MWh

Estimated figures of CEB generation report

Estimated unserved energy = 0.00 GWh

Estimated Mini Hydro (Non telemetered) = 1728 MWh

Estimated IPP Solar PV (Bulk 1-10MW) = 304 MWh

Estimated Solar Roof Top PV = 1640 MWh

Cumulative Dispatch

Following data excludes the contribution from roof top solar, non telemetered solar and mini hydro plants

For Current Month

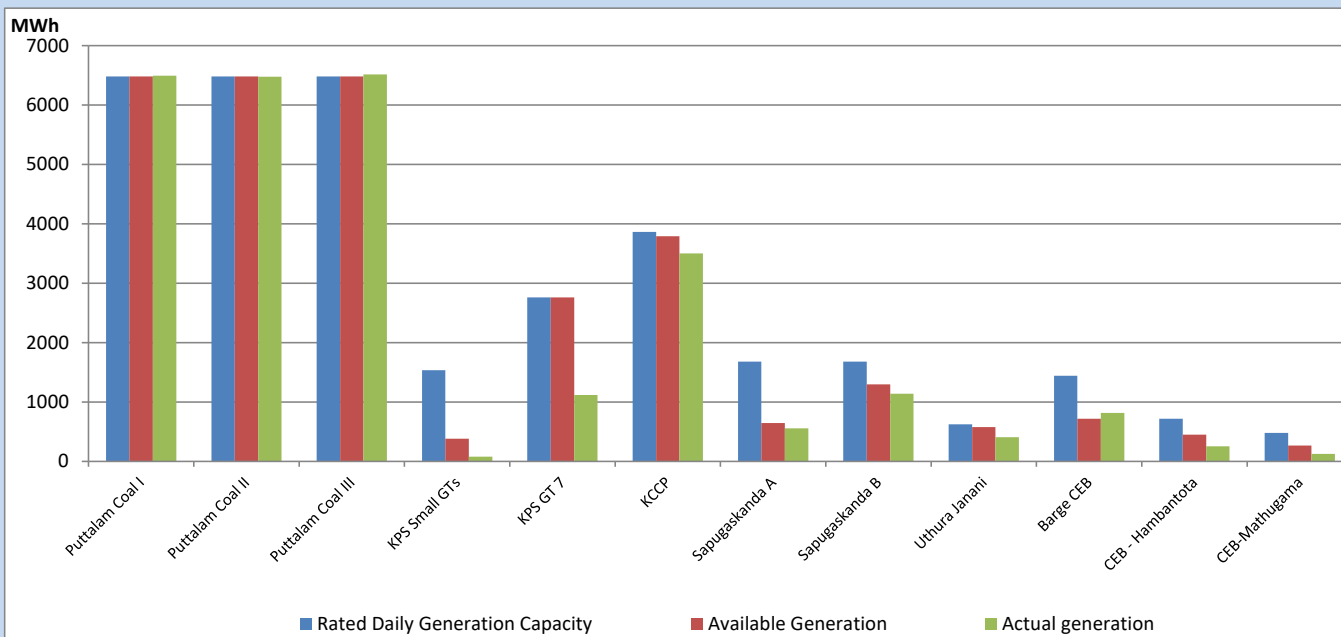
Category	Dispatch (GWh)	
CEB Hydro	217	29.02%
CEB Coal	272	36.39%
CEB Thermal Oil	115	15.32%
IPP Thermal	103	13.77%
SPP Wind	5	0.65%
CEB Wind	7	0.91%
Mini Hydro (Telemetered)	17	2.30%
IPP Solar (Bulk-10MW)	6	0.86%
IPP Wasteheat + BMP	6	0.79%
Total	748	

For Current Year

Category	Dispatch (GWh)	
CEB Hydro	1,138	27.34%
CEB Coal	1,795	43.10%
CEB Thermal Oil	585	14.04%
IPP Thermal	373	8.96%
SPP Wind	56	1.34%
CEB Wind	67	1.61%
Mini Hydro (Telemetered)	86	2.07%
IPP Solar (Bulk-10MW)	32	0.77%
IPP Wasteheat	32	0.77%
Total	4,164	

CEB owned Thermal Plant Dispatch

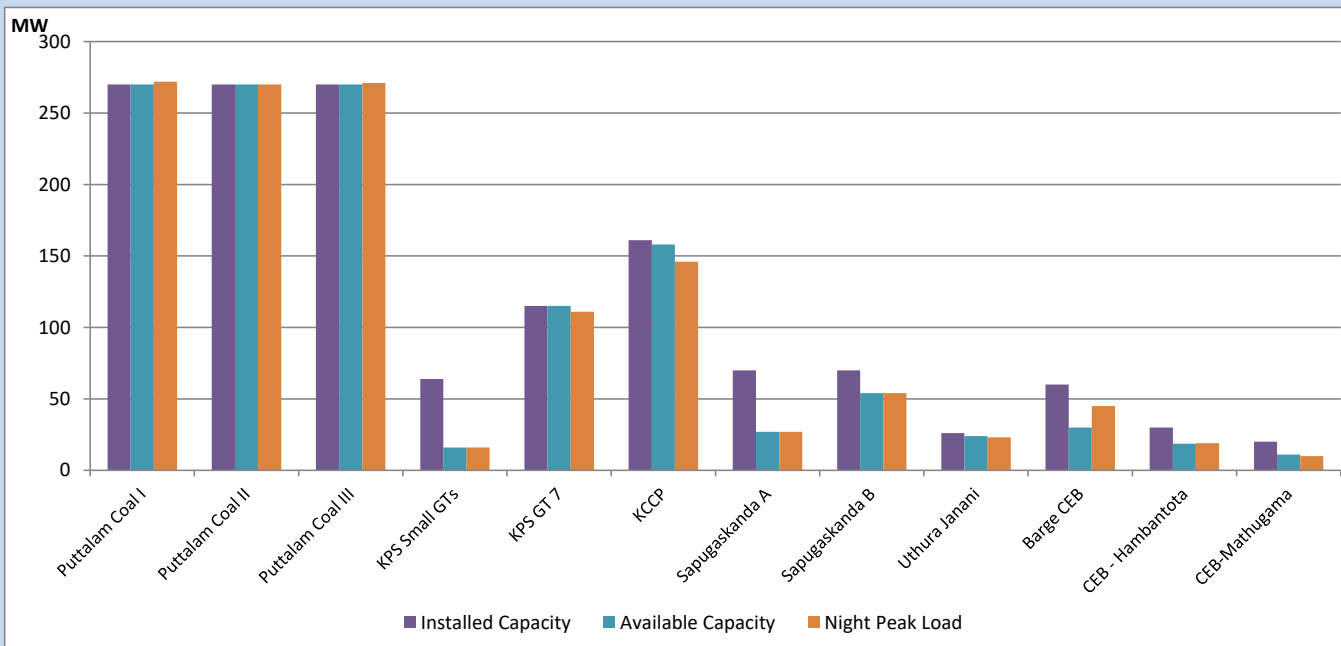
April 20, 2023



Available Generation is estimated based on plant availability at 6.00am on

April 21, 2023

CEB owned Thermal Plant Loading at the Night Peak

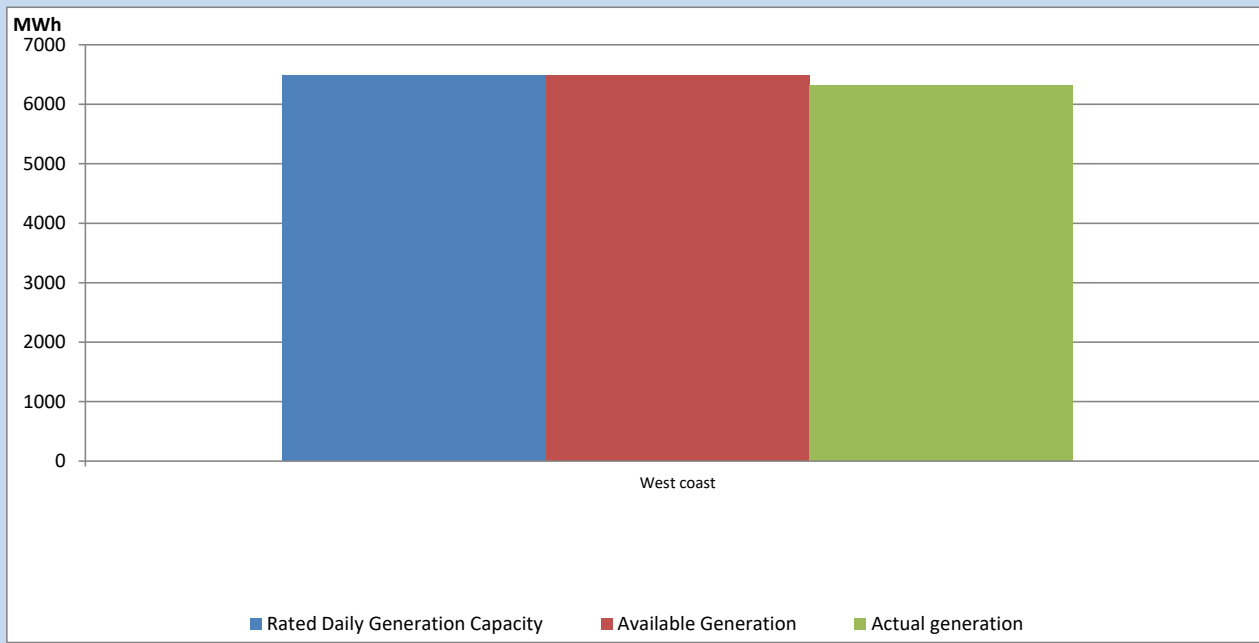


Note- Plant availability is recorded at 6.00 am on

April 21, 2023

IPP owned Thermal Plant Dispatch

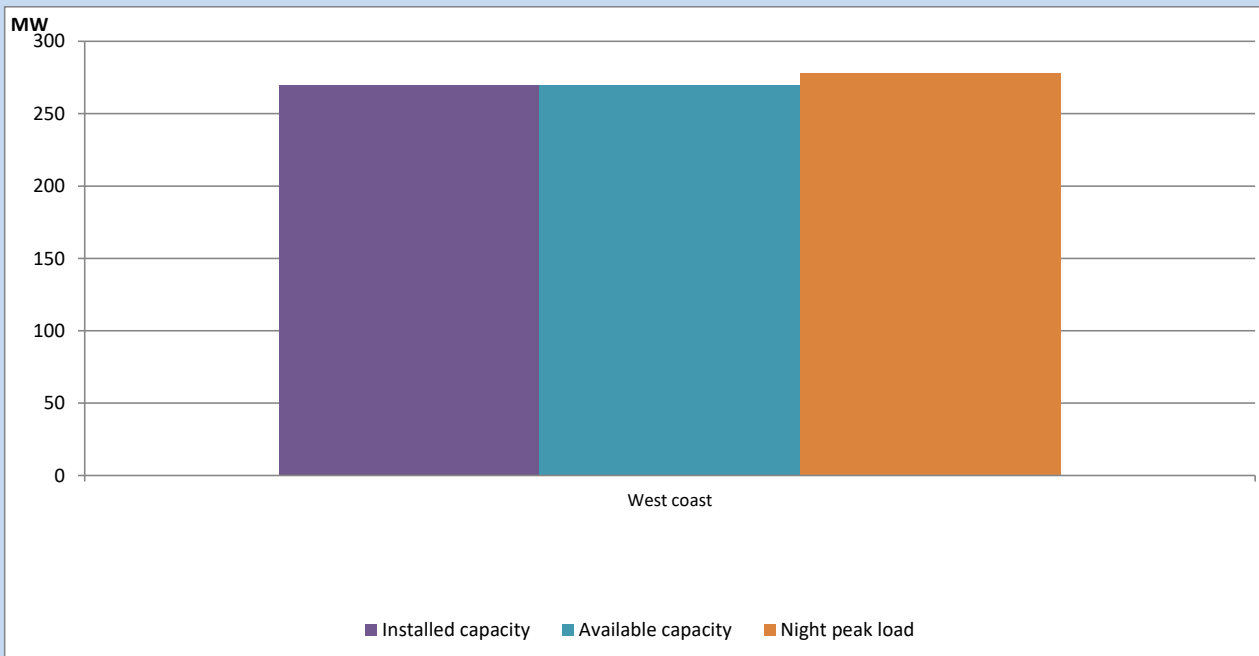
April 20, 2023



Available Generation is estimated based on plant availability at 6.00am on

April 21, 2023

IPP owned Thermal Plant Loading at the Night Peak

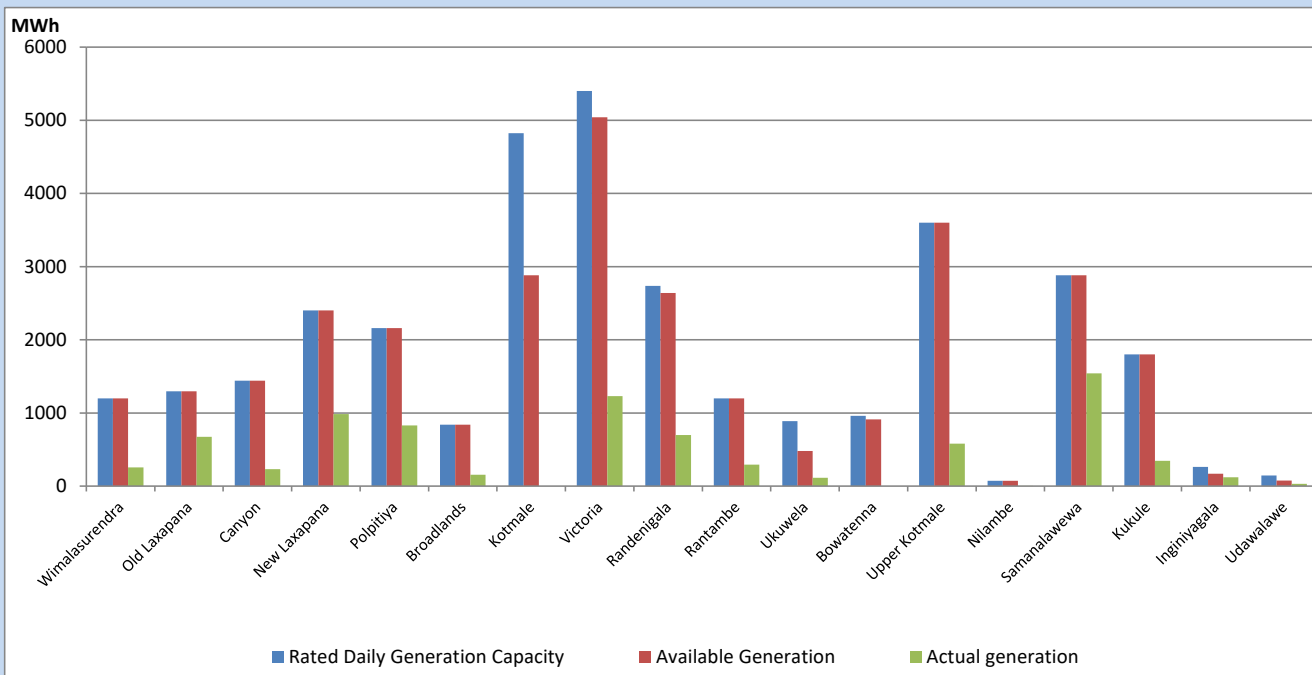


Note- Plant availability is recorded at 6.00 am on

April 21, 2023

Major Hydro Plant Dispatch

April 20, 2023

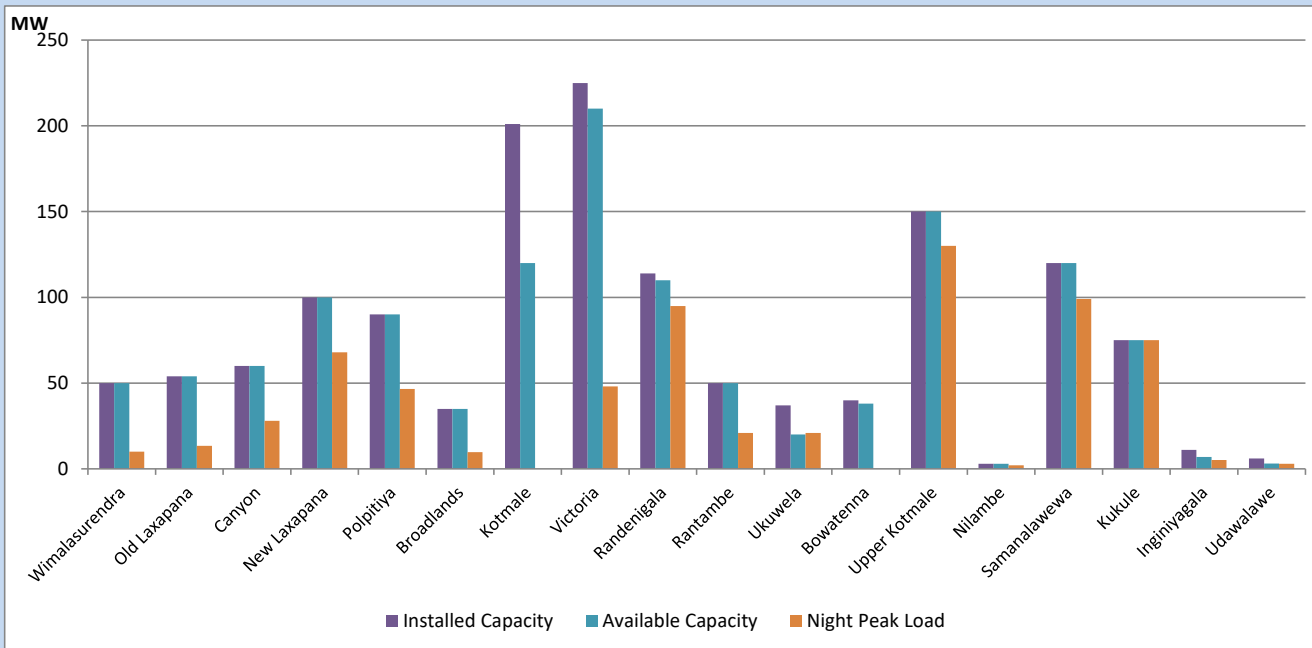


Available Generation is estimated based on plant availability at 6.00am on
Broadlands power plant is operating in the Commissioning Stage

April 21, 2023

Major Hydro Plant Loading at Night Peak

April 20, 2023



Note- Plant availability is recorded at 6.00 am on

April 21, 2023

Broadlands power plant is operating in the Commissioning Stage

Summary of Major Plant performance

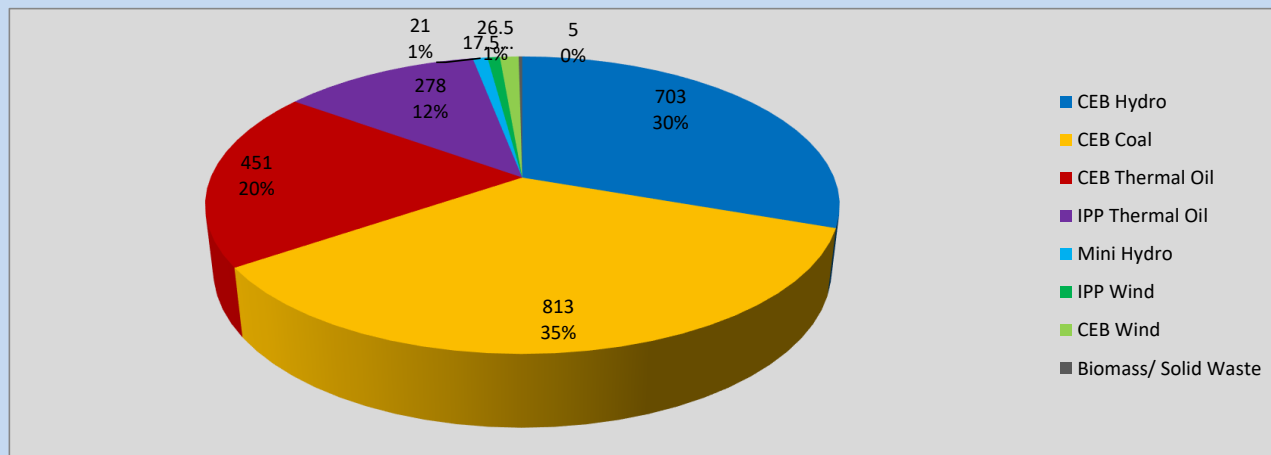
Plant	Installed Capacity	Plant Availability	Night peak Load	Plant Dispatch
	(MW)	(MW)	(MW)	(MWh)
Wimalasurendra	50	50	10	255
Old Laxapana	54	54	13	674
Canyon	60	60	28	233
New Laxapana	100	100	68	986
Polpitiya	90	90	47	829
Broadlands	35	35	10	155
Kotmale	201	120	0	0
Victoria	225	210	48	1,230
Randenigala	114	110	95	698
Rantambe	50	50	21	294
Ukuwela	37	20	21	113
Bowatenna	40	38	0	0
Upper Kotmale	150	150	130	580
Nilambe	3	3	2	5
Samanalawewa	120	120	99	1,542
Kukule	75	75	75	347
Inginiyagala	11	7	5	120
Udawalawe	6	3	3	32
Puttalam Coal I	270	270	272	6,496
Puttalam Coal II	270	270	270	6,477
Puttalam Coal III	270	270	271	6,514
KPS Small GTs	64	16	16	82
KPS GT 7	115	115	111	1,120
KCCP	161	158	146	3,501
Sapugaskanda A	70	27	27	556
Sapugaskanda B	70	54	54	1,141
Uthura Janani	26	24	23	407
Barge CEB	60	30	45	815
CEB-Hambantota	30	19	19	253
CEB-Mathugama	20	11	10	126
ACE Matara	24	0	0	0
Asia Power	50	0	0	0
Sojitz Kelanitissa	163	0	0	0
West Coast	270	270	278	6,317
Nothern Power	36	0	0	0
ACE Embilipitiya	93	0	0	0
Total	3,483	2,829	2,287	44,578

Plant availability is the availability recorded at 6 am on

April 21, 2023

Contribution to the Night Peak in MW

April 20, 2023

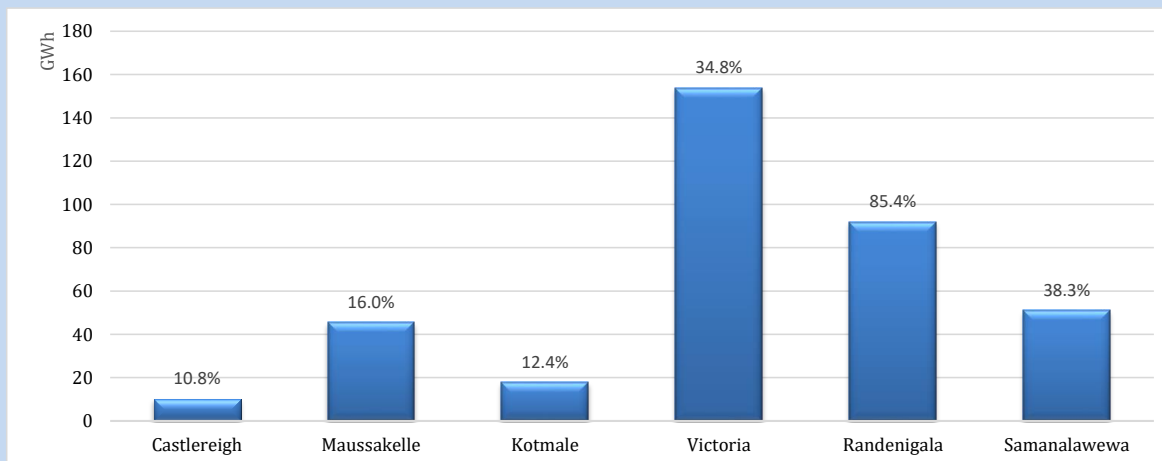


Night Peak*	2,315 MW
Day Peak	2,106 MW
Minimum Demand	1,425 MW

Above figures are excluding contribution from roof top solar, non telemetered solar and mini hydro plants

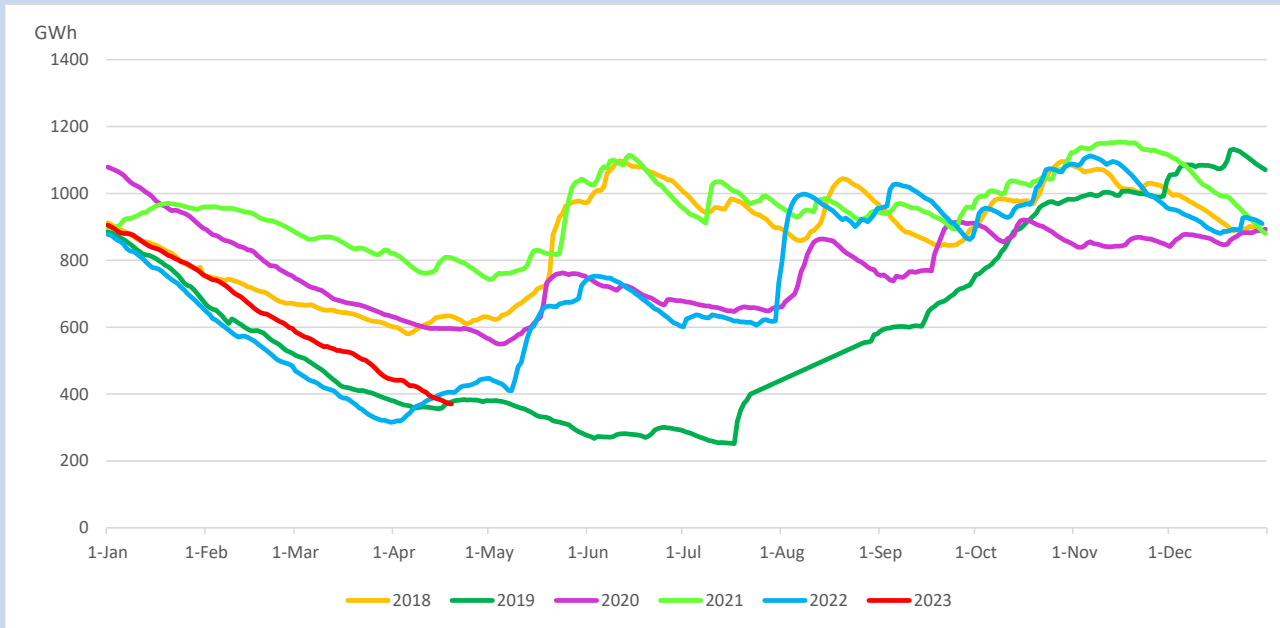
Reservoir Levels -

as at 06.00 Hr on April 21, 2023

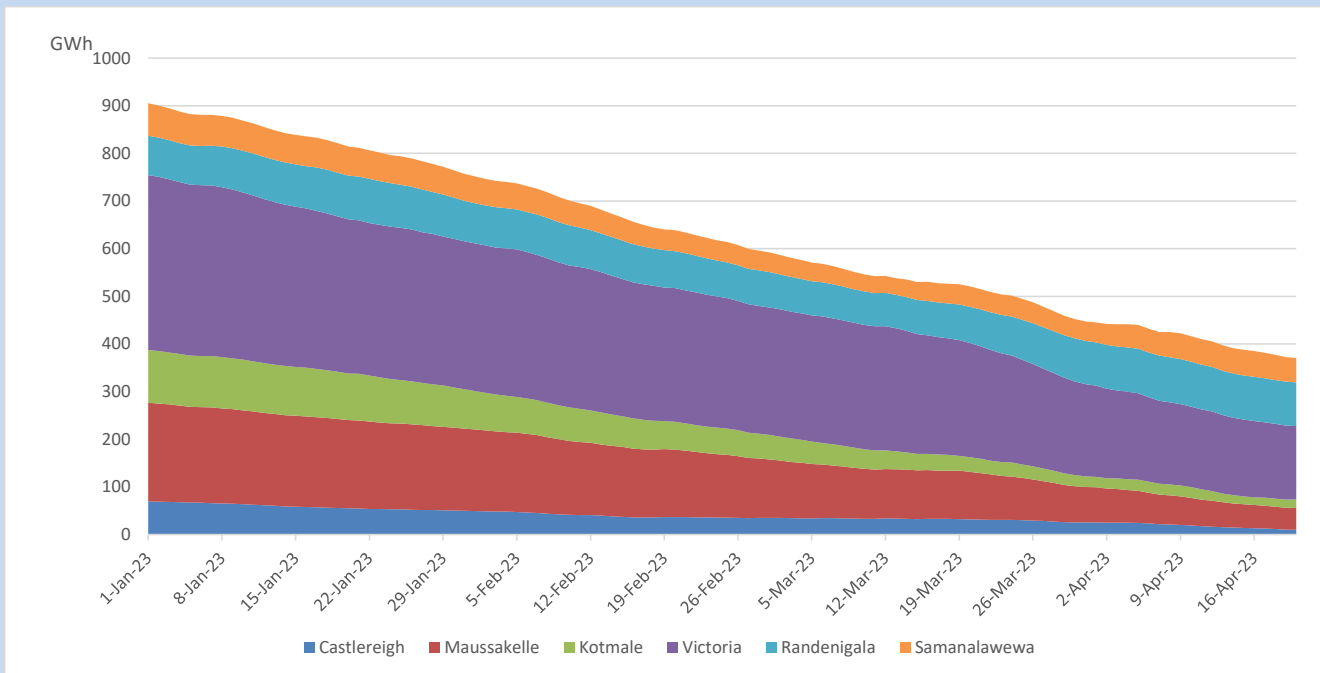


Total Reservoir Level	370.4 GWh
% of Total capacity	30.7%

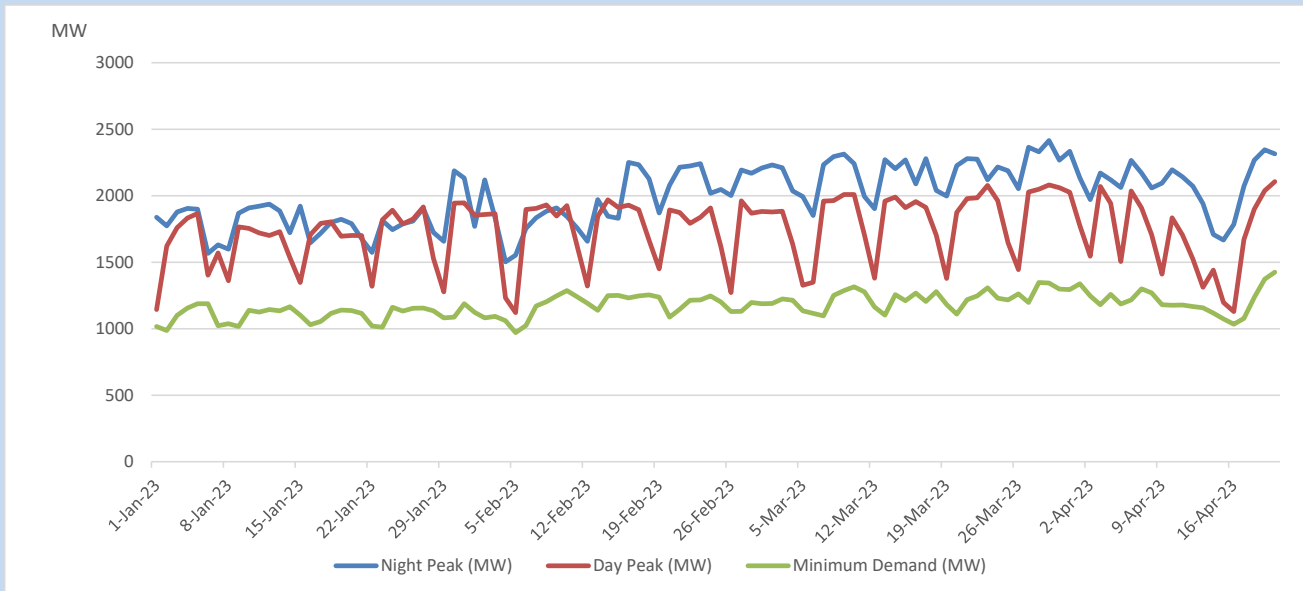
Comparison of Total Reservoir Storage Levels with Past Years



Variation of Major Hydro Reservoir Levels in the current year (GWh)



Variation of Demand during the current year

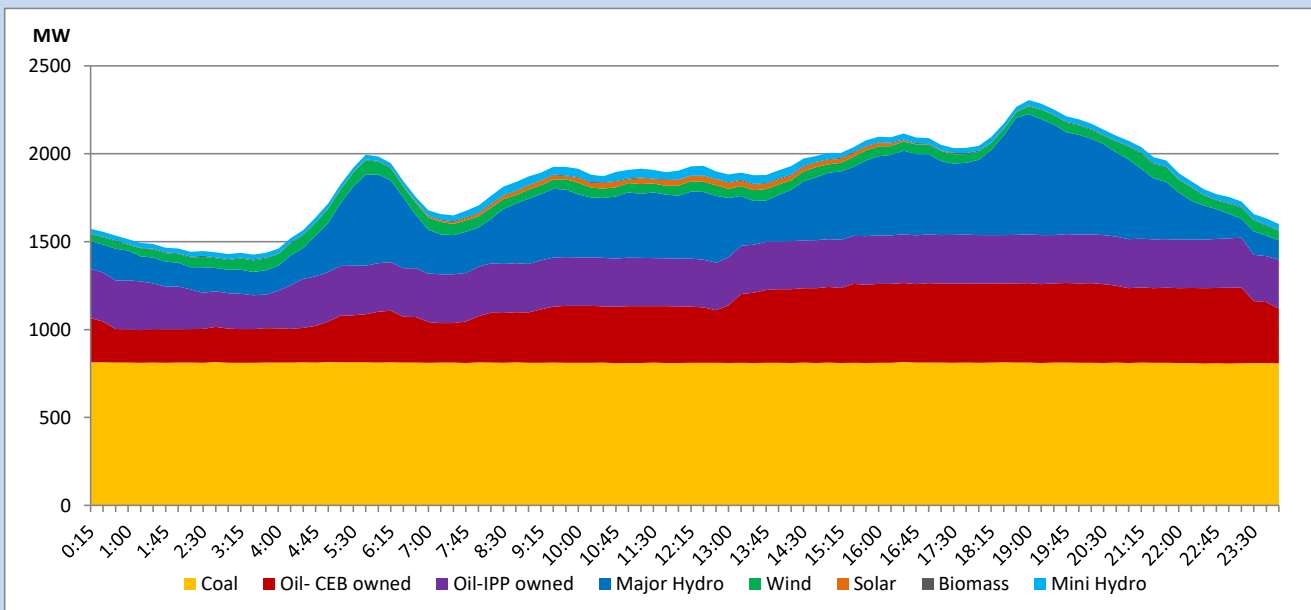


The above figures are excluding contribution from roof top solar, non telemetered solar and mini hydro plants

Daily Load Curve

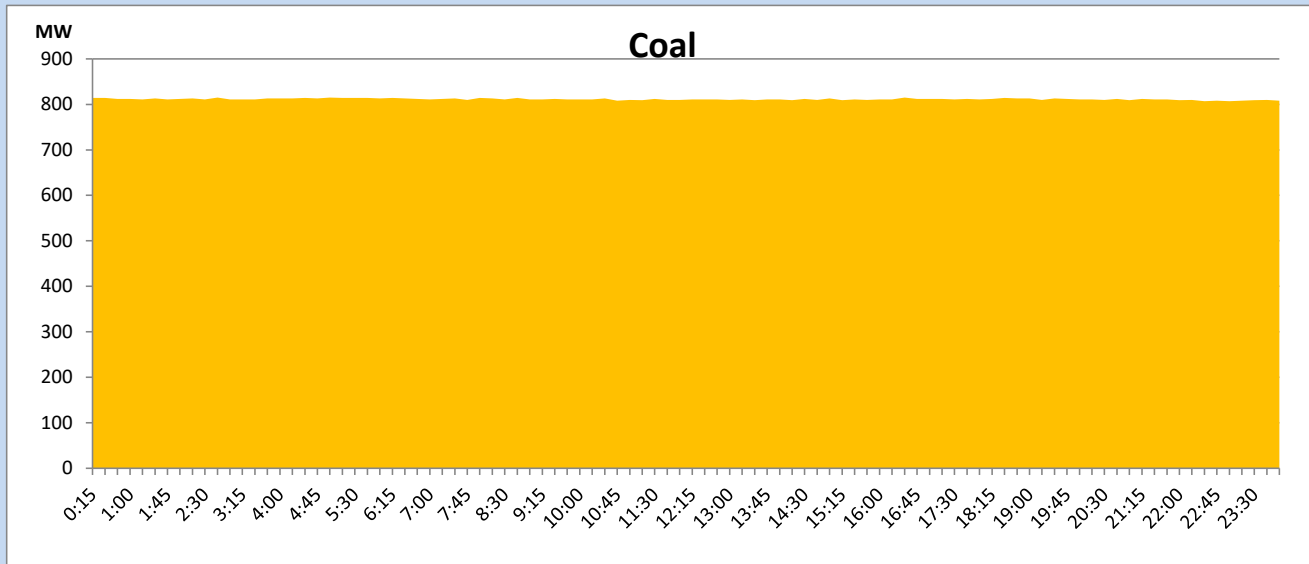
April 20, 2023

Solar and wind data is based on Telemetered Power Stations only



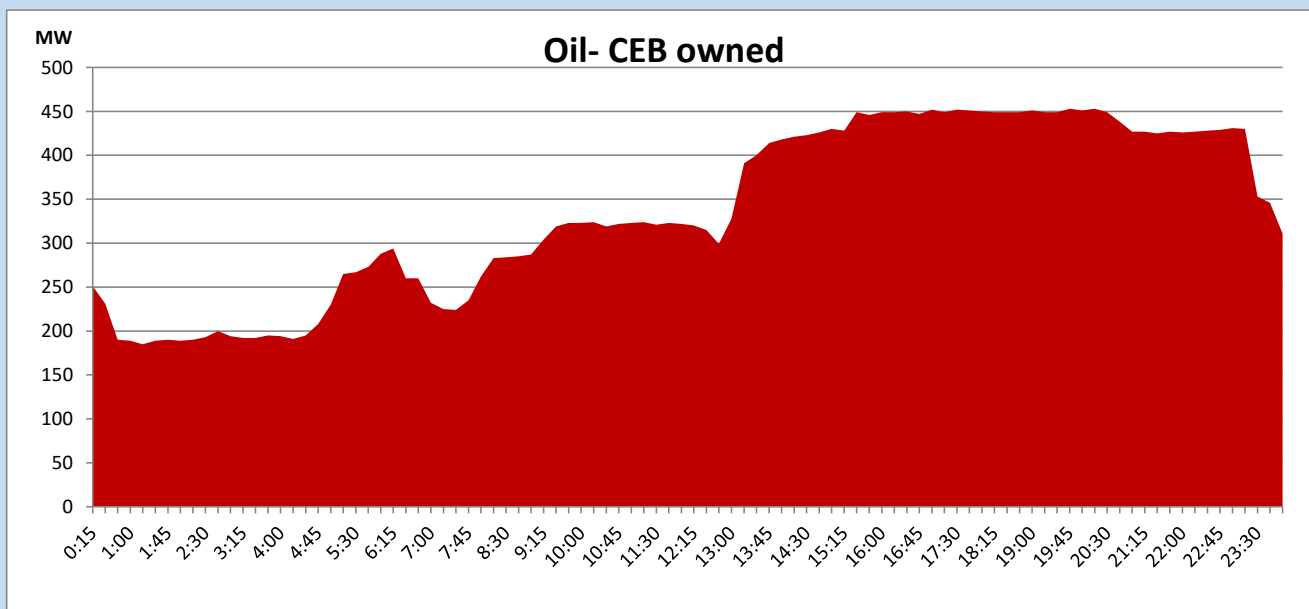
Coal Generation during

April 20, 2023



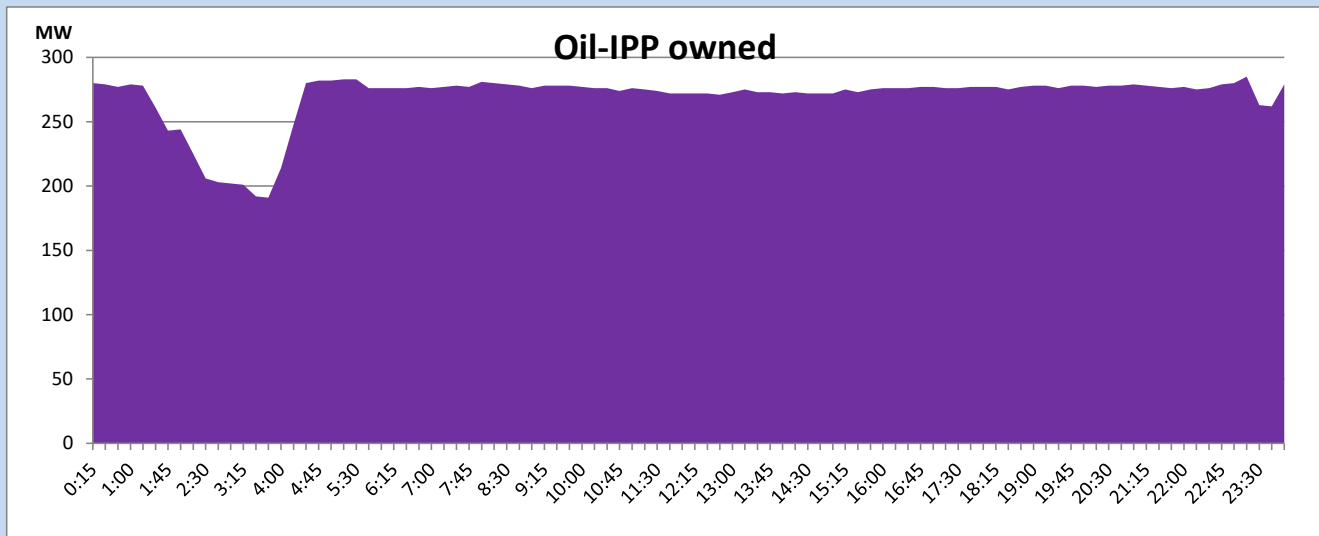
CEB Oil Plant Generation during

April 20, 2023



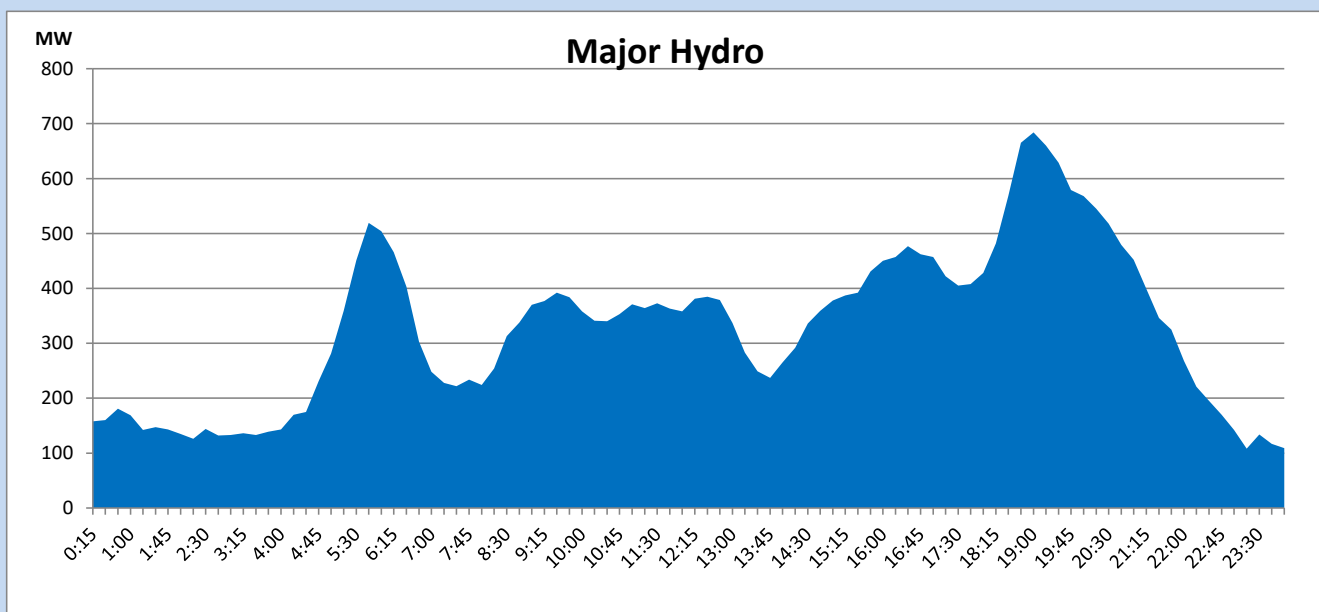
IPP Oil Plant Generation during

April 20, 2023



Major Hydro Generation during

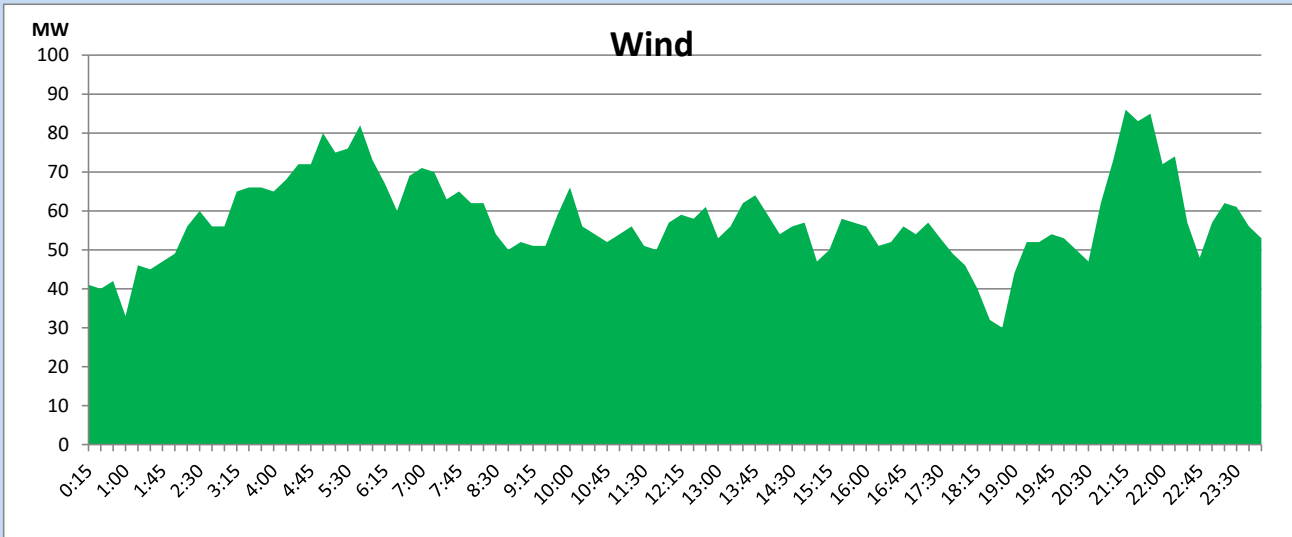
April 20, 2023



Wind Generation during

April 20, 2023

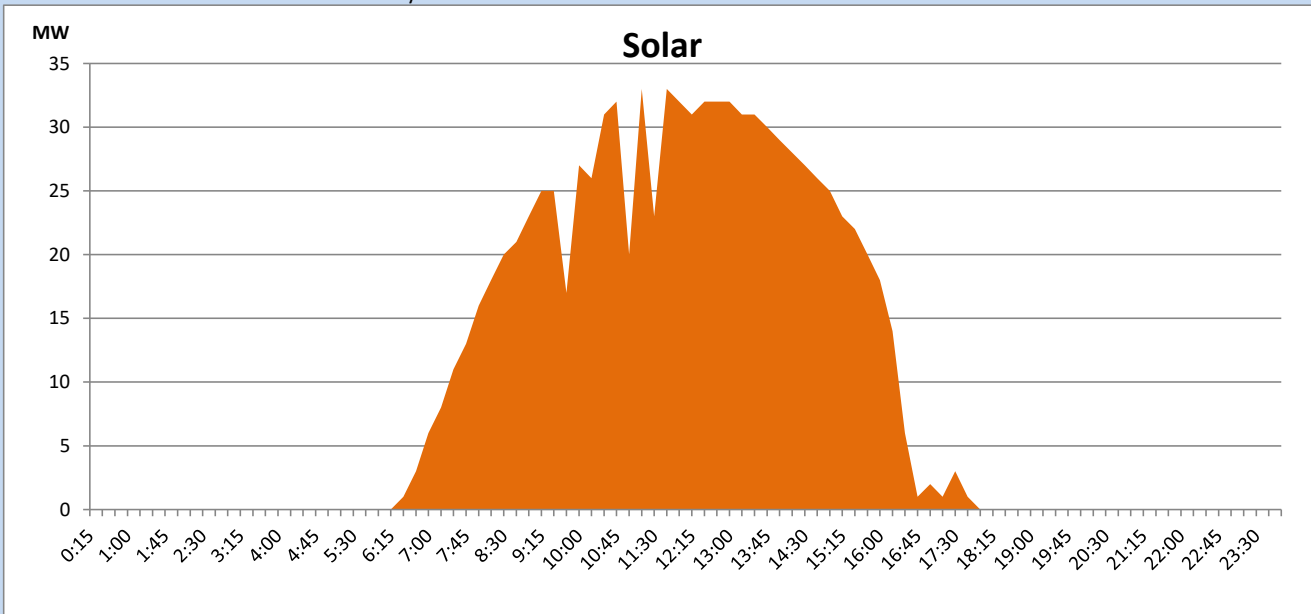
Based on Telemetered Power Stations only



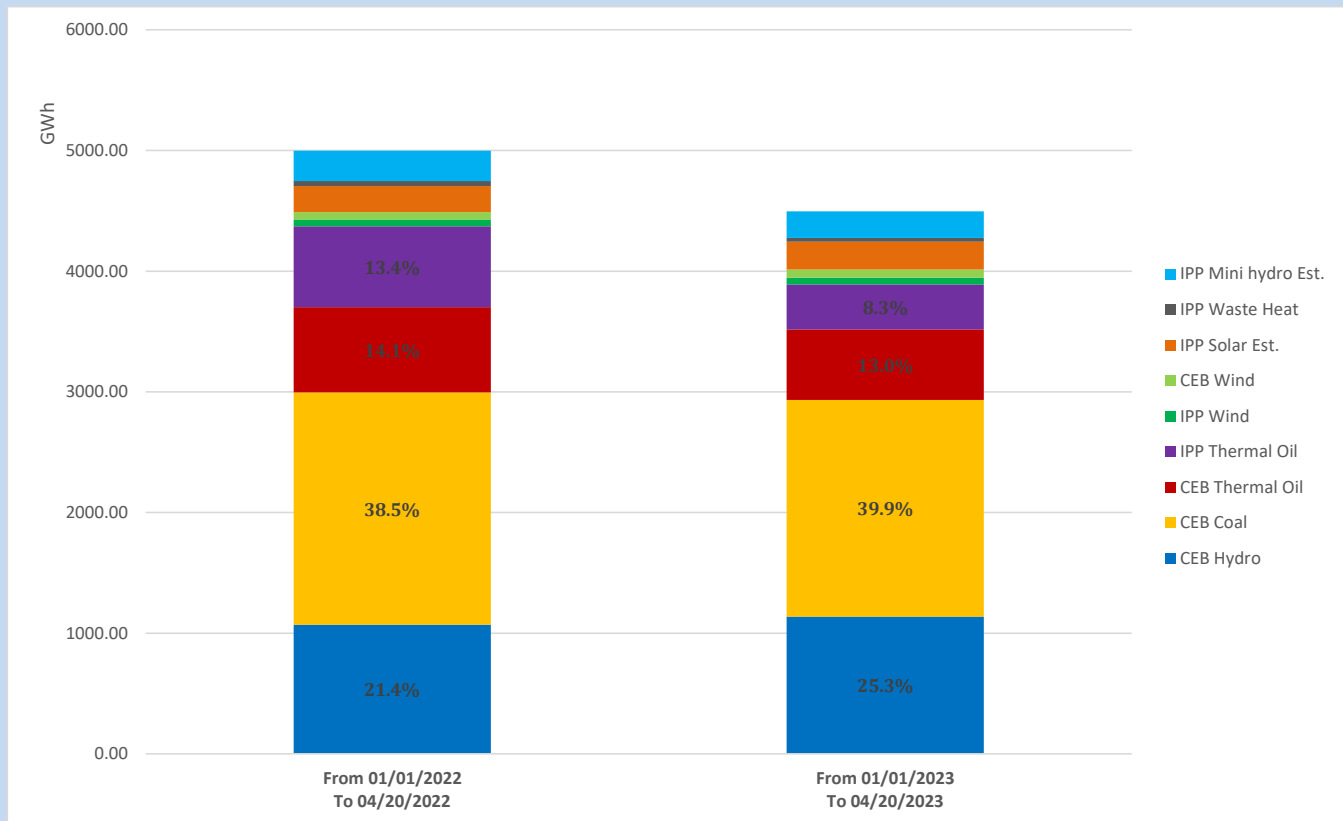
Solar Generation during

April 20, 2023

Based on Telemetered Power Stations only



Cumulative Dispatch Comparison with Last Year



The above figures are including contribution from roof top solar, non telemetered solar and mini hydro plants

Thermal Plant Fuel types

Power Station	Primary Fuel
CEB Thermal	
Sapugaskanda 1	Heavy Fuel
Sapugaskanda 2	Heavy Fuel
Kelanitissa Small Gas Turbines	Auto Diesel
GT 7 - Kelanitissa	Auto Diesel
Kelanitissa CCY	Naphtha or Diesel
Lakvijaya 1	Coal
Lakvijaya 2	Coal
Lakvijaya 3	Coal
Uthuru Janani	Heavy Fuel
Barge CEB	Heavy Fuel

Power Station	Primary Fuel
Private Thermal	
West Coast	Auto Diesel / Heavy Fuel

Major Incidents reported during the day

April 20, 2023

- 1) GT07 made a forced shutdown during the startup process without synchronizing at 10:54hrs. GT07 synchronized at 12:58hrs and reached full load by 13:55
- 2) Power Barge unit 02 was made unavailable at 05:00hrs (21/04/2023) due to lube oil pump failure. Unit 02 is yet to resume generation.