

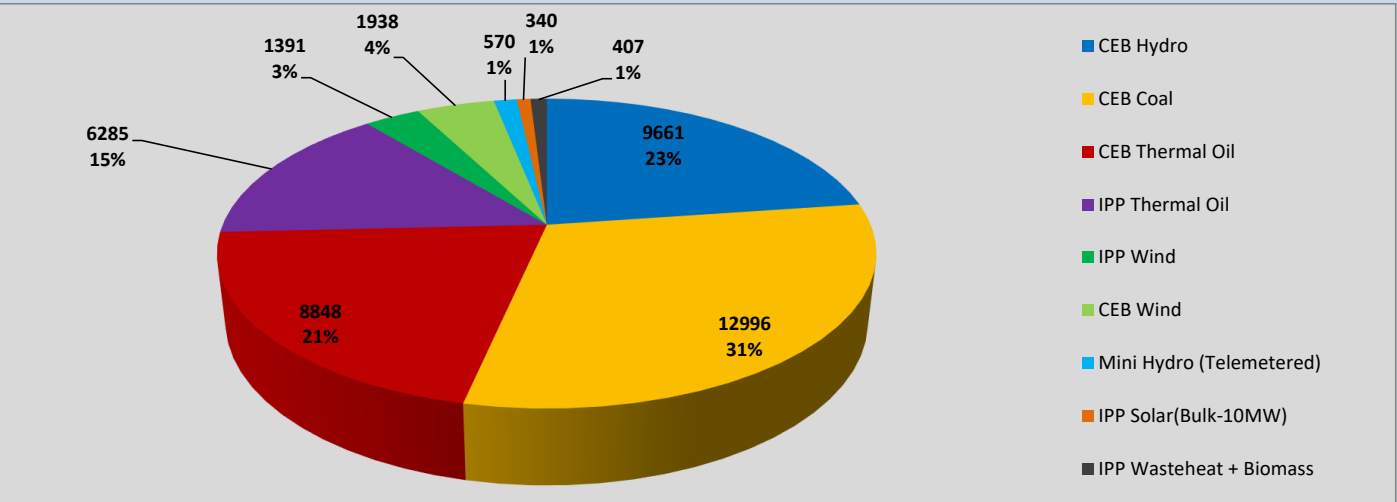
# **Generation and Reservoirs Statistics**

**May 19, 2023**



**PUBLIC UTILITIES COMMISSION OF SRI LANKA**

## Daily Generation Mix in MWh



Total Generation (Excluding estimated figures) = **42,436 MWh**

### Estimated figures of CEB generation report

Estimated unserved energy = 0.00 GWh  
Estimated Mini Hydro (Non telemetered) = 3420 MWh  
Estimated IPP Solar PV (Bulk 1-10MW) = 304 MWh  
Estimated Solar Roof Top PV = 1920 MWh

## Cumulative Dispatch

Following data excludes the contribution from roof top solar, non telemetered solar and mini hydro plants

### For Current Month

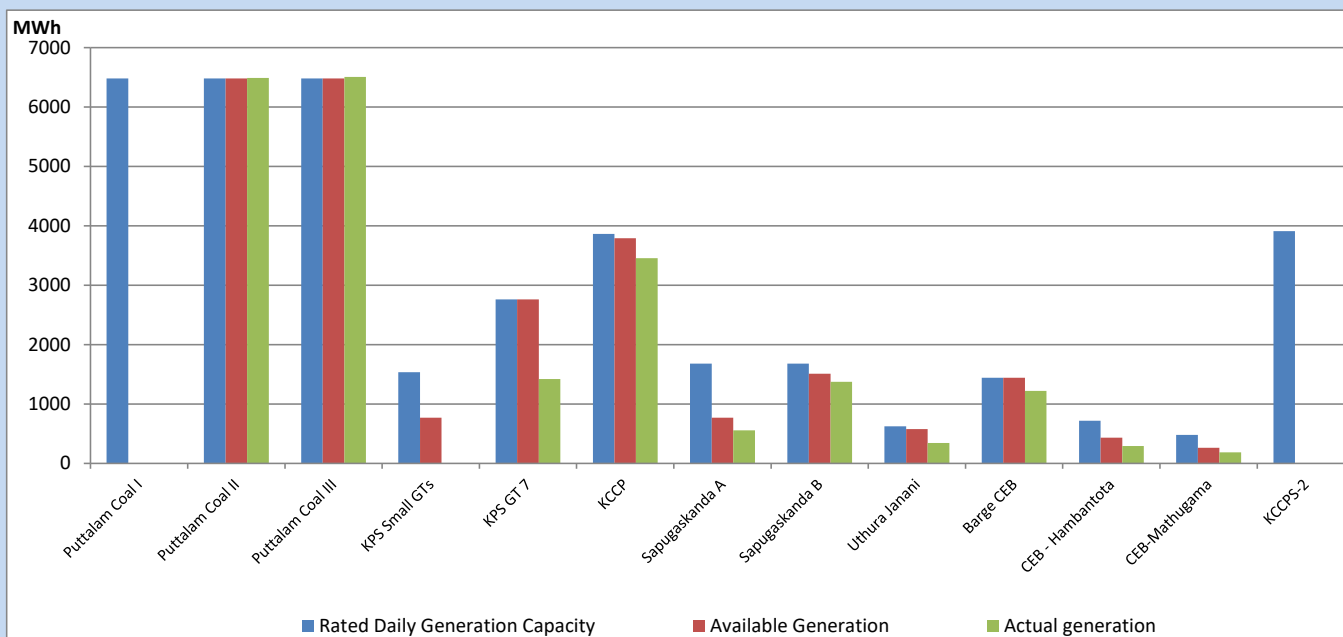
Category	Dispatch (GWh)	
CEB Hydro	169	23.73%
CEB Coal	318	44.65%
CEB Thermal Oil	93	13.04%
IPP Thermal	60	8.39%
SPP Wind	20	2.77%
CEB Wind	21	2.98%
Mini Hydro (Telemetered)	19	2.71%
IPP Solar(Bulk-10MW)	5	0.71%
IPP Wasteheat + BMP	7	1.00%
Total	713	

### For Current Year

Category	Dispatch (GWh)	
CEB Hydro	1,371	26.02%
CEB Coal	2,305	43.77%
CEB Thermal Oil	748	14.20%
IPP Thermal	477	9.06%
SPP Wind	78	1.47%
CEB Wind	91	1.73%
Mini Hydro (Telemetered)	115	2.18%
IPP Solar(Bulk-10MW)	40	0.75%
IPP Wasteheat	42	0.80%
Total	5,267	

## CEB owned Thermal Plant Dispatch

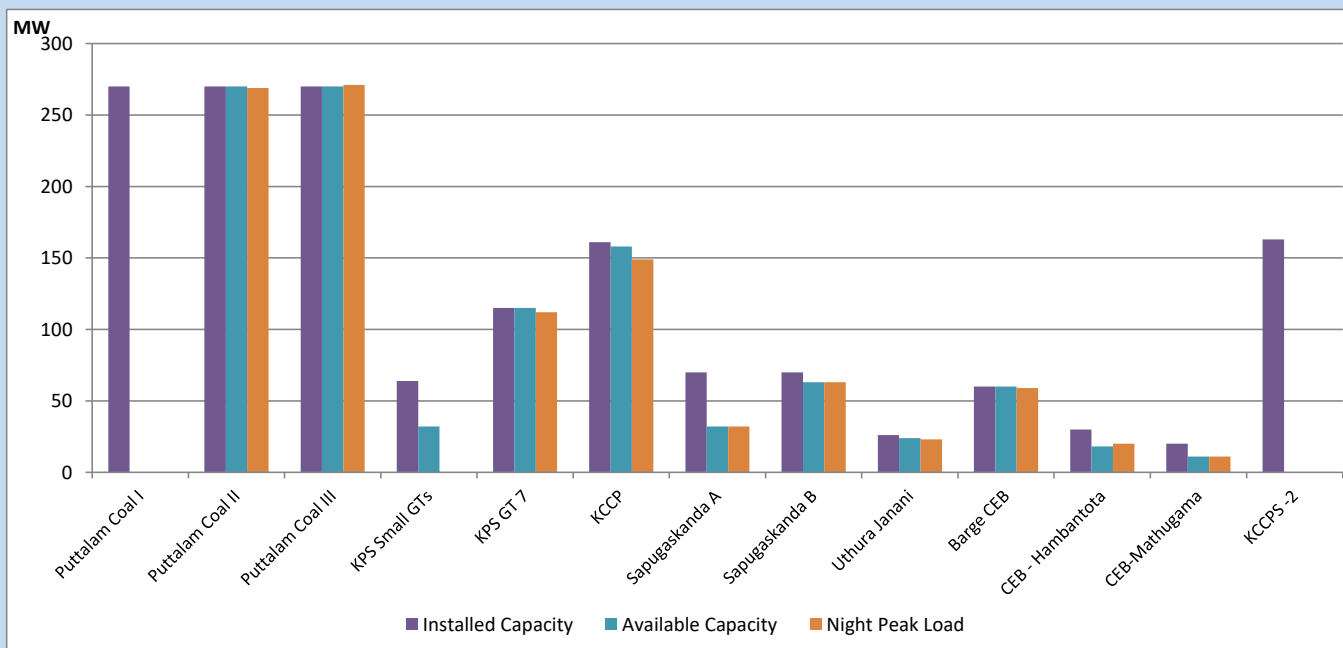
May 19, 2023



Available Generation is estimated based on plant availability at 6.00am on

May 20, 2023

## CEB owned Thermal Plant Loading at the Night Peak



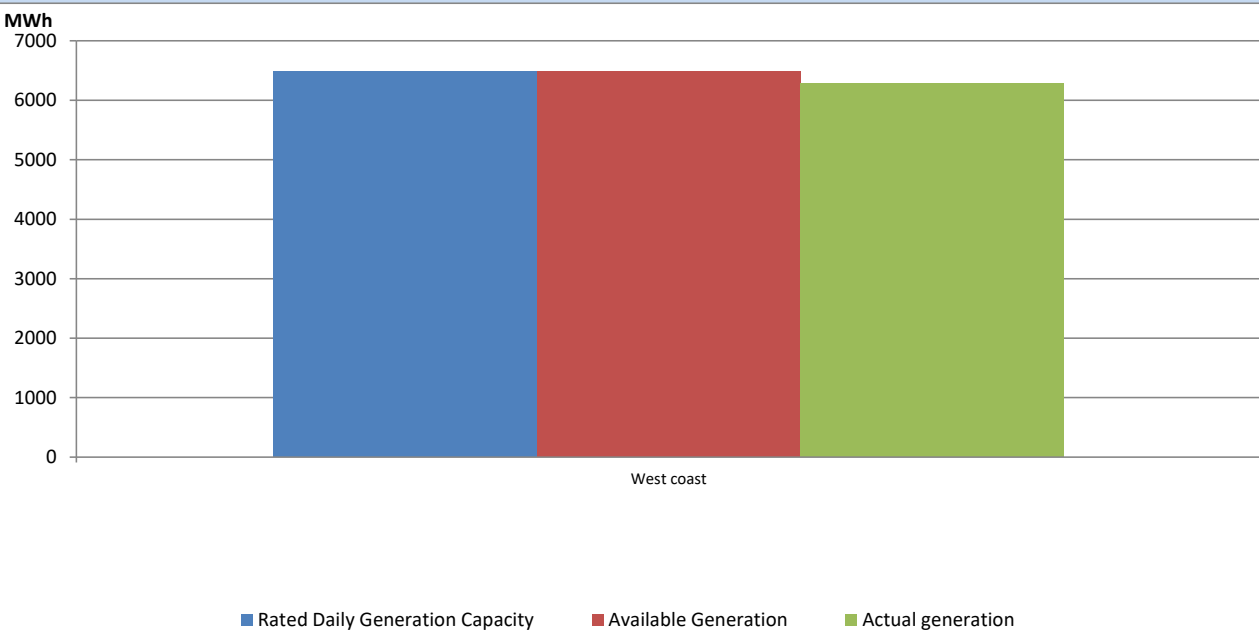
Note-

Plant availability is recorded at 6.00 am on

May 20, 2023

IPP owned Thermal Plant Dispatch

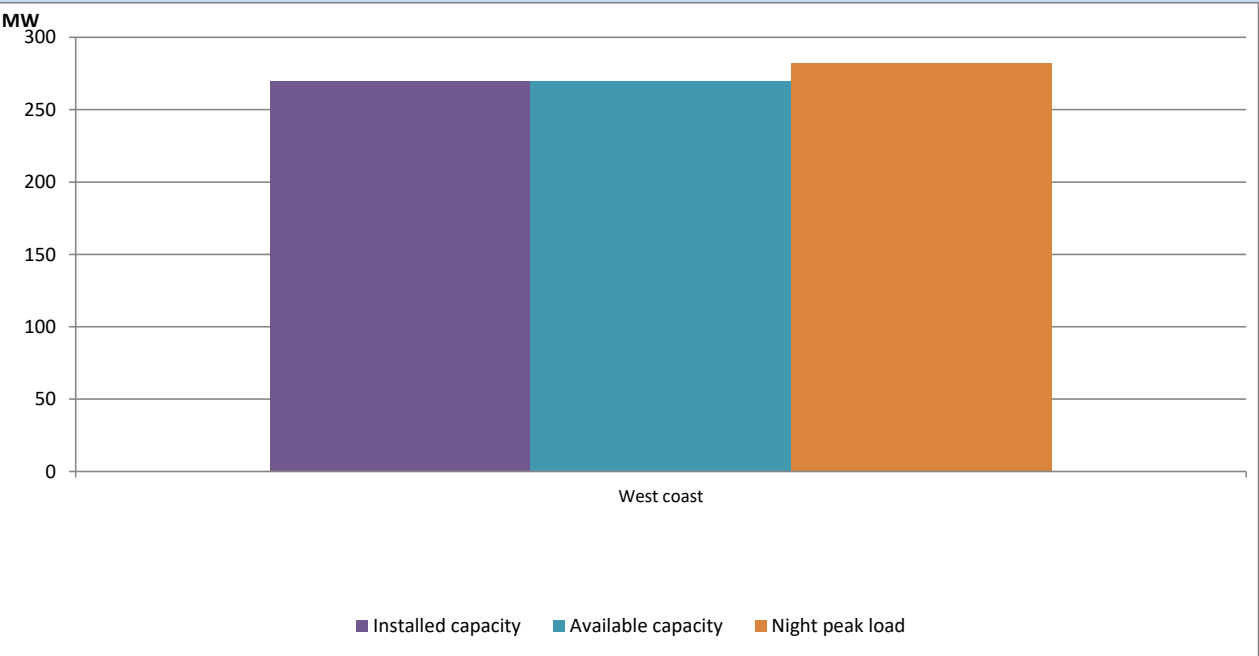
May 19, 2023



Available Generation is estimated based on plant availability at 6.00am on

May 20, 2023

IPP owned Thermal Plant Loading at the Night Peak

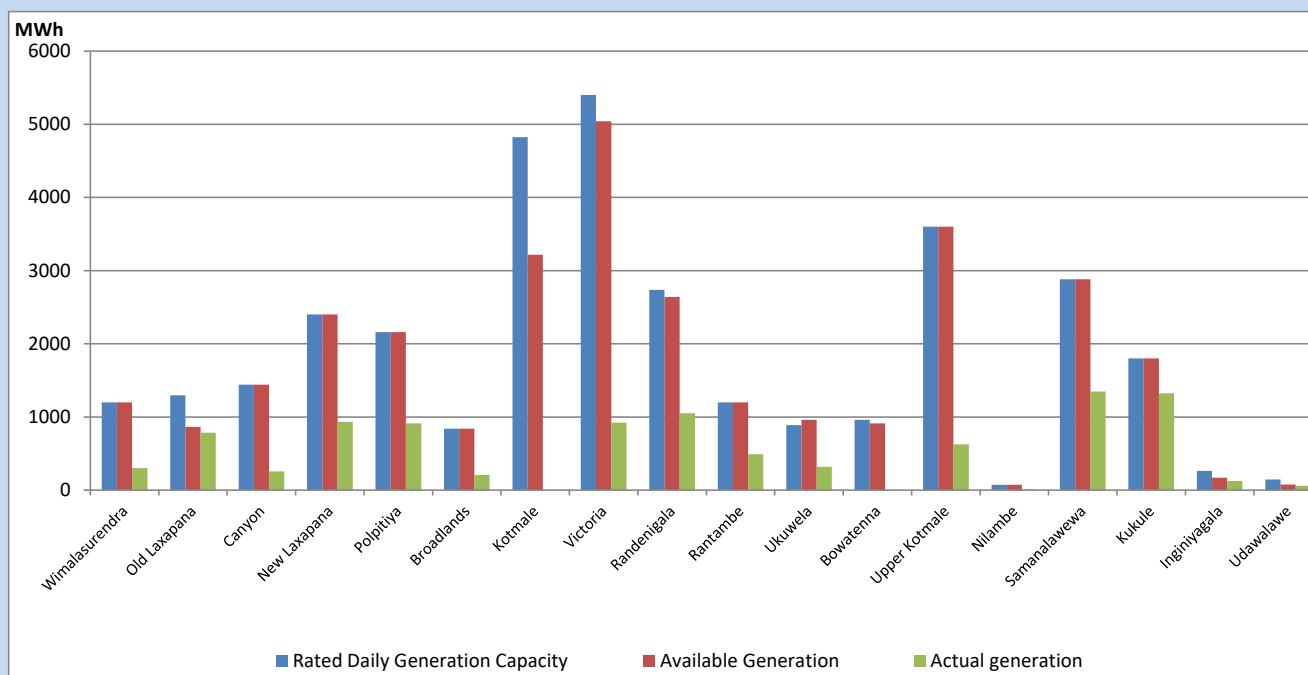


Note- Plant availability is recorded at 6.00 am on

May 20, 2023

## Major Hydro Plant Dispatch

May 19, 2023

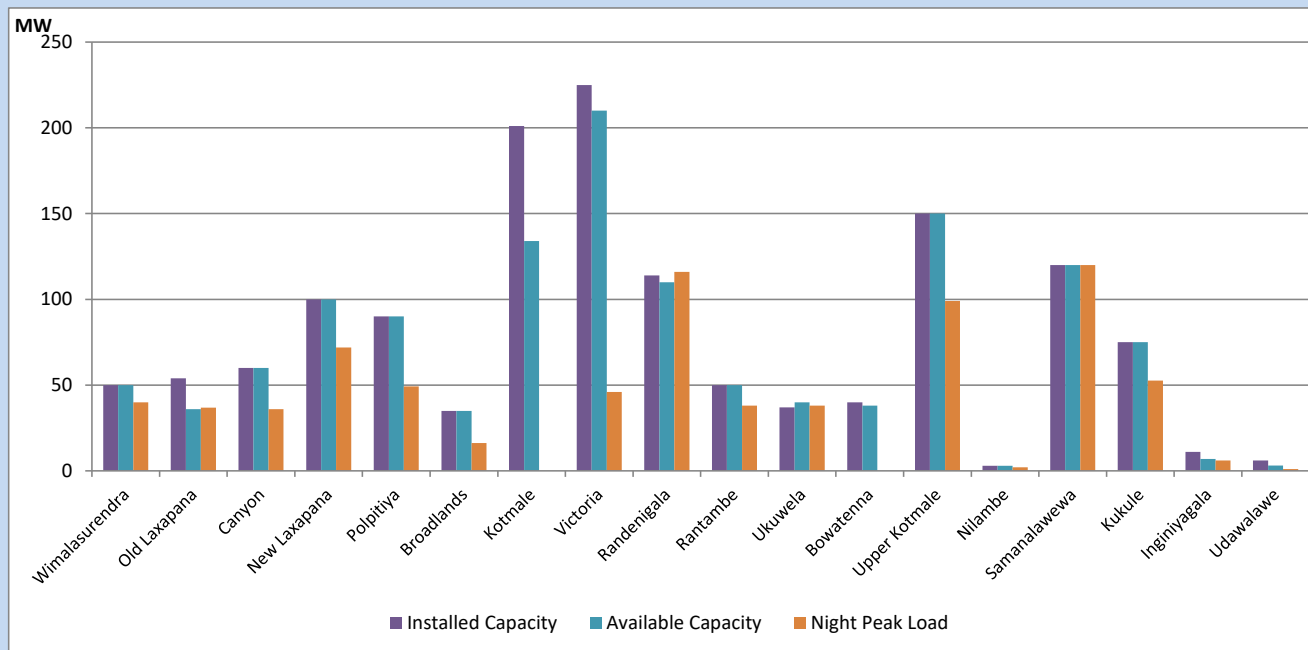


Available Generation is estimated based on plant availability at 6.00am on  
Broadlands power plant is operating in the Commissioning Stage

May 20, 2023

## Major Hydro Plant Loading at Night Peak

May 19, 2023



Note- Plant availability is recorded at 6.00 am on

May 20, 2023

Broadlands power plant is operating in the Commissioning Stage

## Summary of Major Plant performance

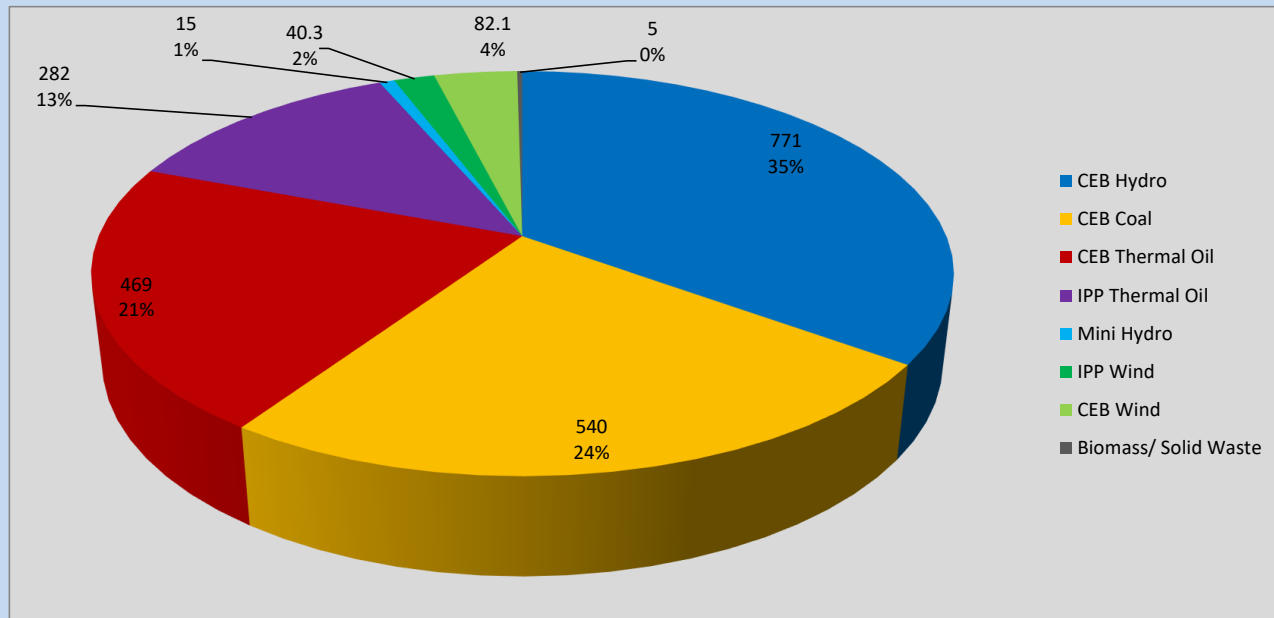
Plant	Installed Capacity	Plant Availability	Night peak Load	Plant Dispatch
	(MW)	(MW)	(MW)	(MWh)
Wimalasurendra	50	50	40	301
Old Laxapana	54	36	37	783
Canyon	60	60	36	255
New Laxapana	100	100	72	933
Polpitiya	90	90	49	912
Broadlands	35	35	16	208
Kotmale	201	134	0	0
Victoria	225	210	46	923
Randenigala	114	110	116	1,050
Rantambe	50	50	38	489
Ukuwela	37	40	38	318
Bowatenna	40	38	0	0
Upper Kotmale	150	150	99	624
Nilambe	3	3	2	10
Samanalawewa	120	120	120	1,348
Kukule	75	75	53	1,324
Inginiyagala	11	7	6	125
Udawalawe	6	3	1	58
Puttalam Coal I	270	0	0	0
Puttalam Coal II	270	270	269	6,490
Puttalam Coal III	270	270	271	6,506
KPS Small GTs	64	32	0	0
KPS GT 7	115	115	112	1,421
KCCP	161	158	149	3,456
Sapugaskanda A	70	32	32	556
Sapugaskanda B	70	63	63	1,375
Uthura Janani	26	24	23	344
Barge CEB	60	60	59	1,219
CEB-Hambantota	30	18	20	291
CEB-Mathugama	20	11	11	186
ACE Matara	24	0	0	0
Asia Power	50	0	0	0
KCCPS -2	163	0	0	0
West Coast	270	270	282	6,285
Nothern Power	36	0	0	0
ACE Embilipitiya	93	0	0	0
Total	3,483	2,634	2,202	42,436

Plant availability is the availability recorded at 6 am on

May 20, 2023

## Contribution to the Night Peak in MW

May 19, 2023

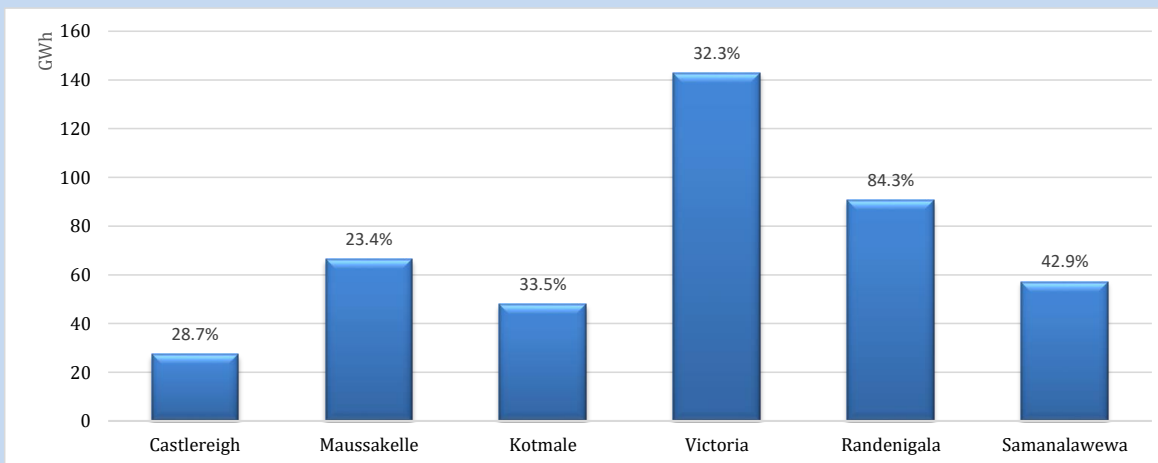


Night Peak\* 2,204 MW  
 Day Peak 1,968 MW  
 Minimum Demand 1,691 MW

Above figures are excluding contribution from roof top solar, non telemetered solar and mini hydro plants

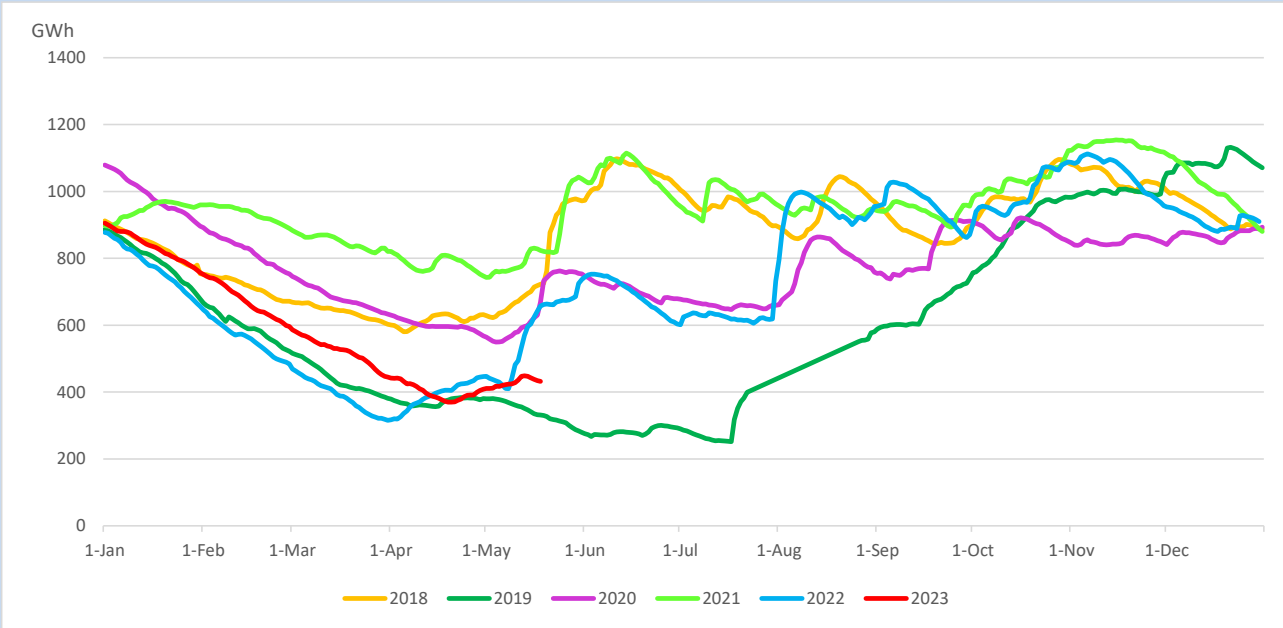
## Reservoir Levels -

as at 06.00 Hr on May 20, 2023

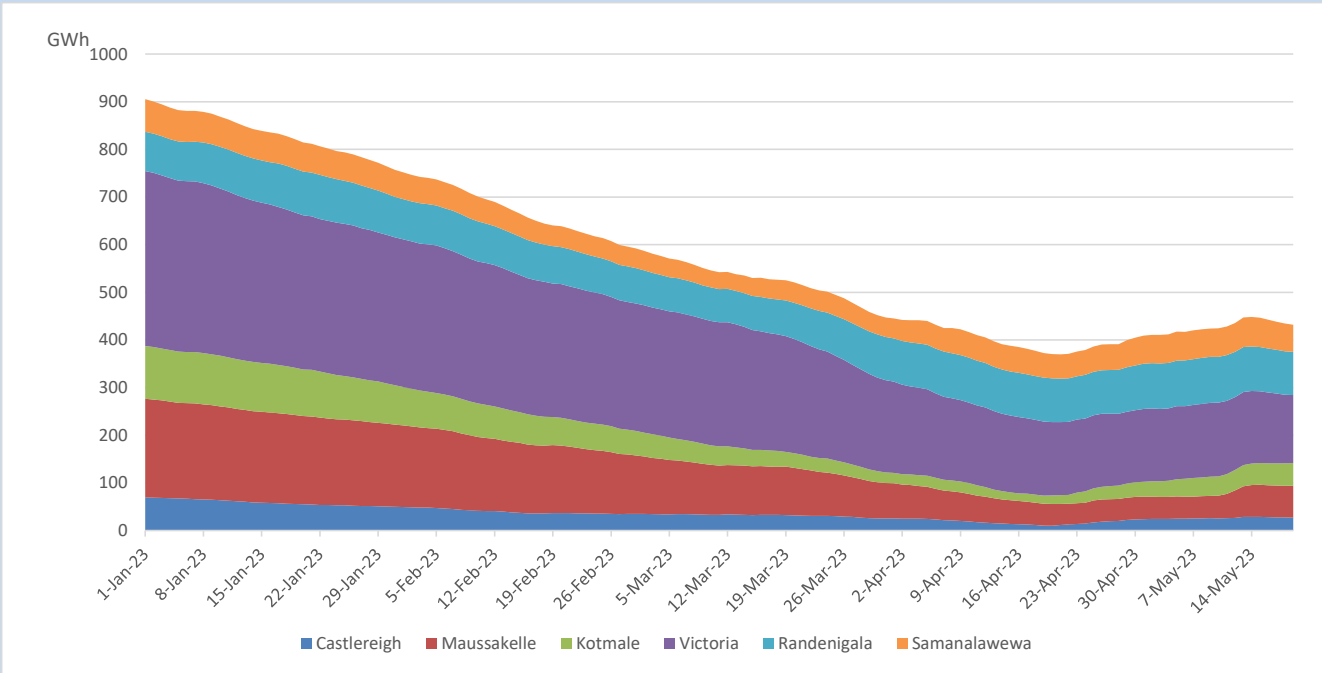


Total Reservoir Level 432.1 GWh  
 % of Total capacity 35.9%

## Comparison of Total Reservoir Storage Levels with Past Years

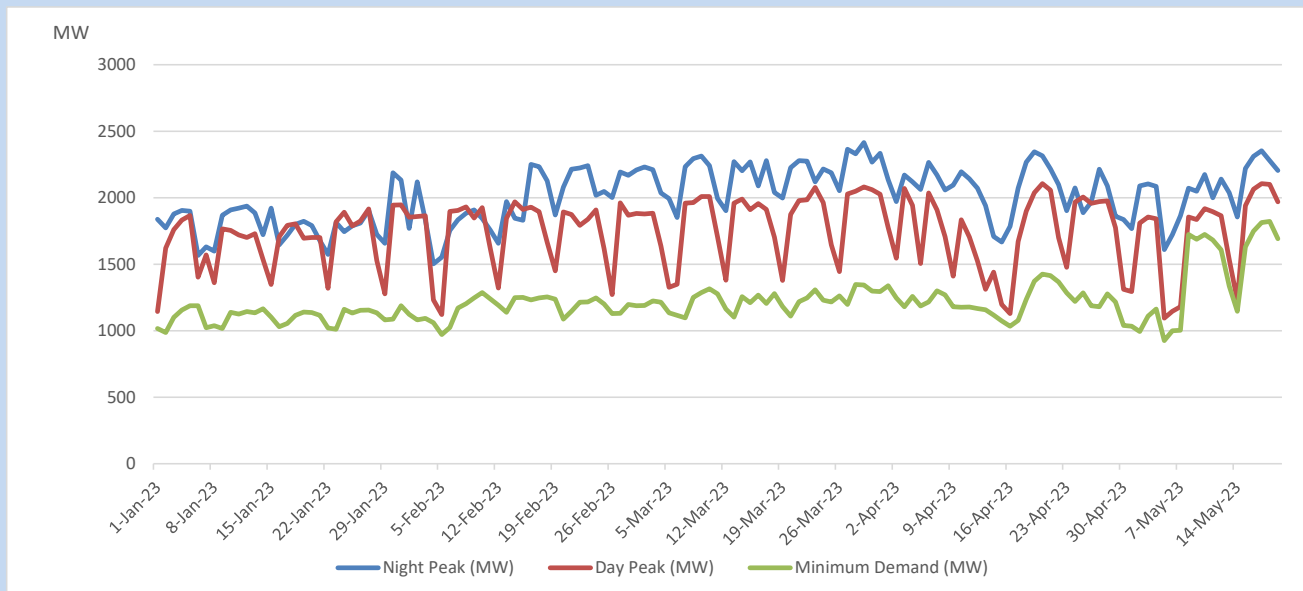


## Variation of Major Hydro Reservoir Levels in the current year (GWh)





## Variation of Demand during the current year

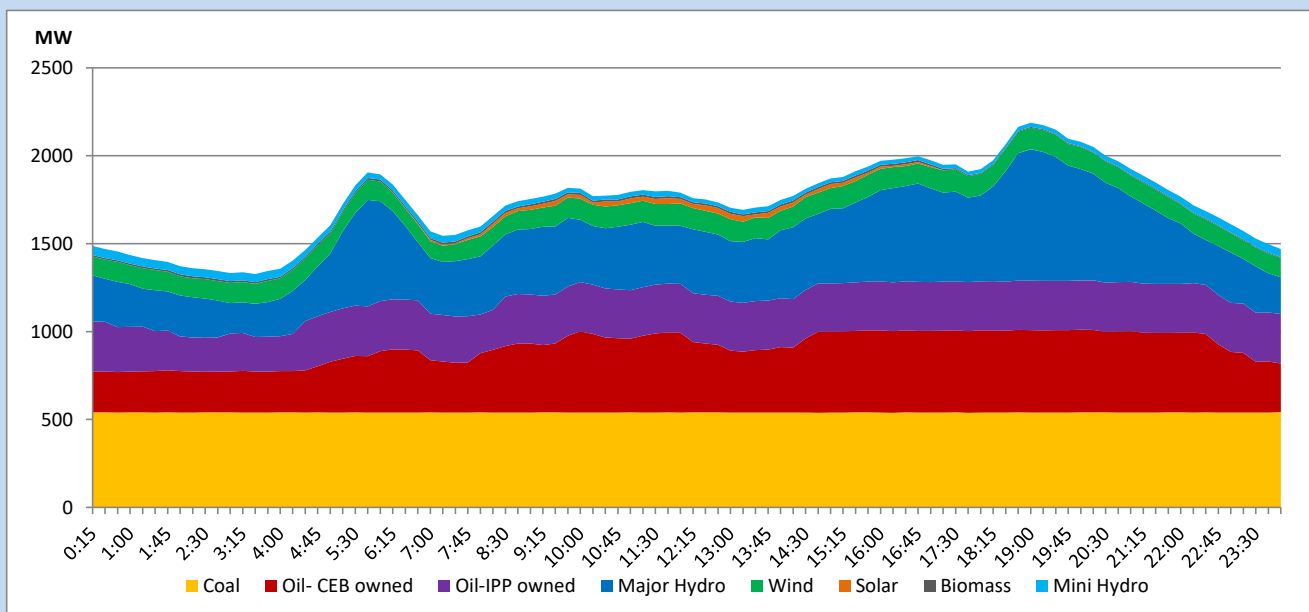


The above figures are excluding contribution from roof top solar, non telemetered solar and mini hydro plants

## Daily Load Curve

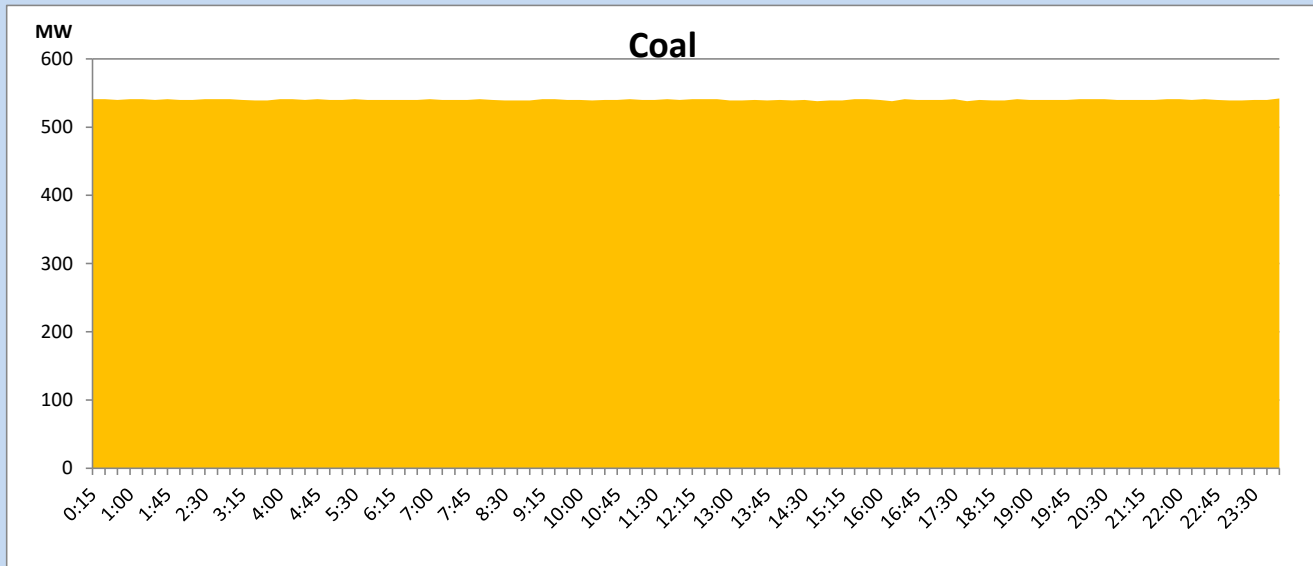
May 19, 2023

Solar and wind data is based on Telemetered Power Stations only



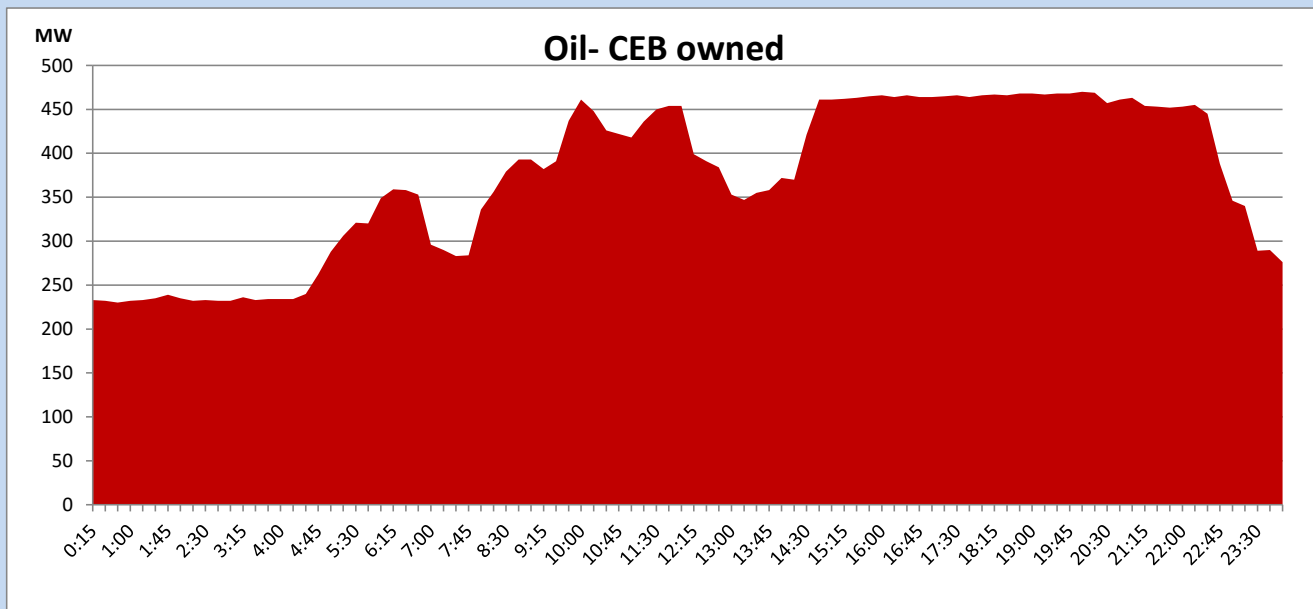
## Coal Generation during

May 19, 2023



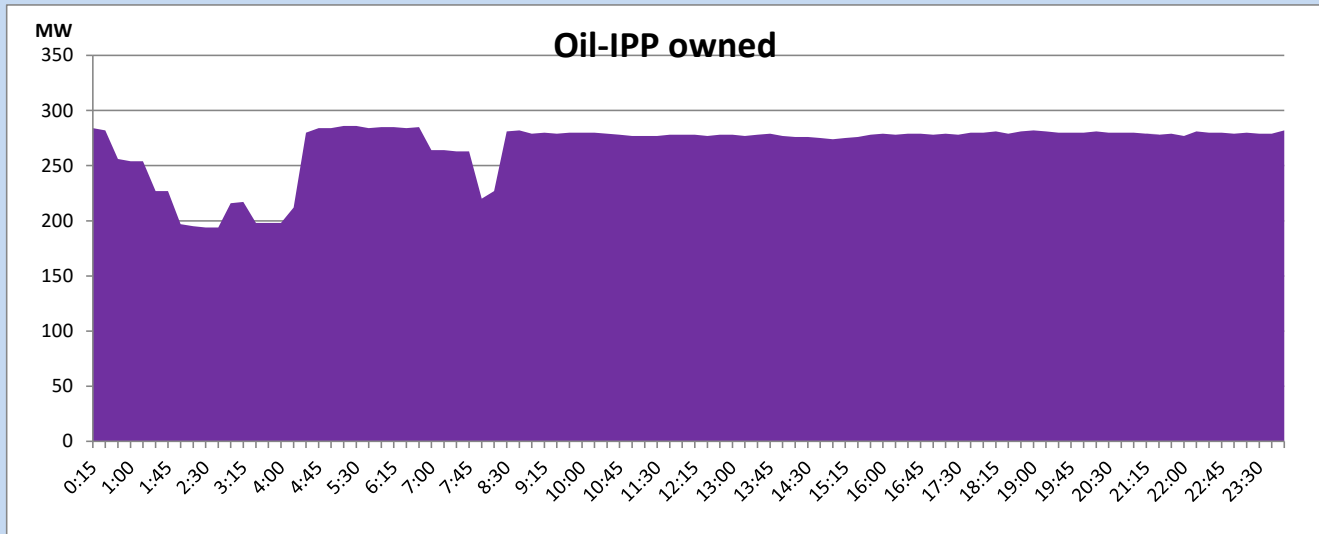
## CEB Oil Plant Generation during

May 19, 2023



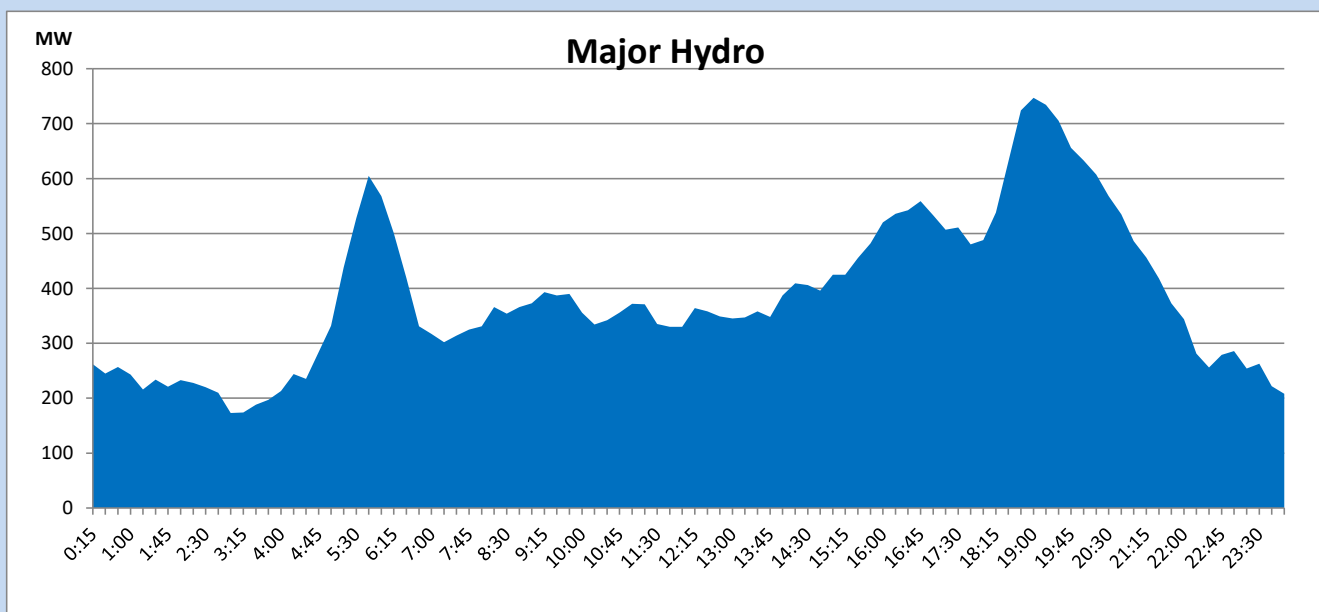
## IPP Oil Plant Generation during

May 19, 2023



## Major Hydro Generation during

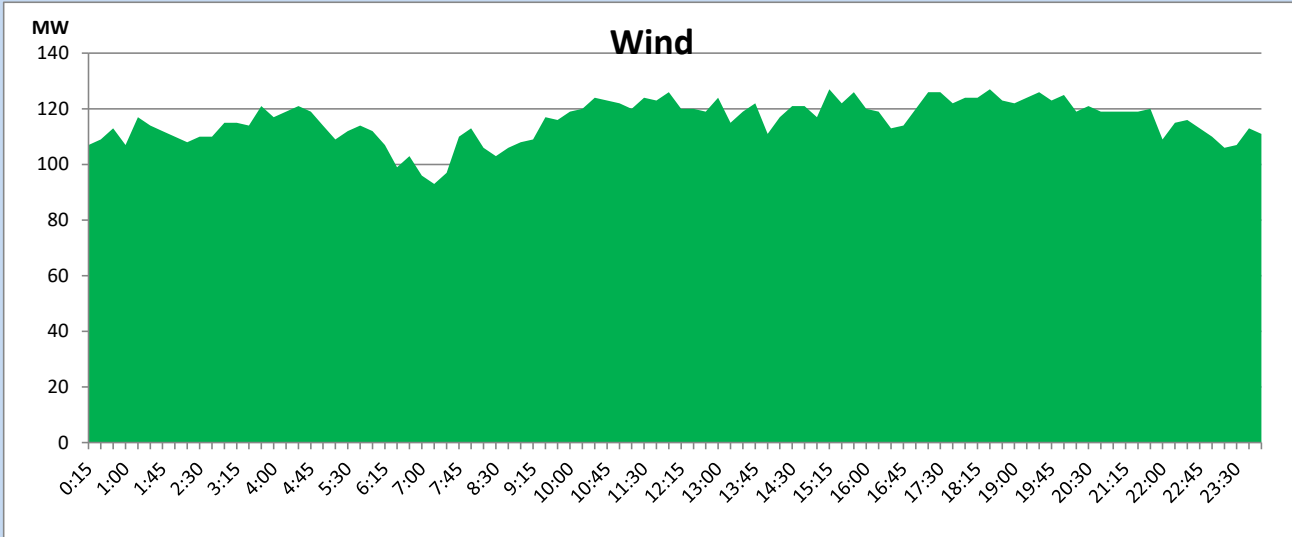
May 19, 2023



## Wind Generation during

May 19, 2023

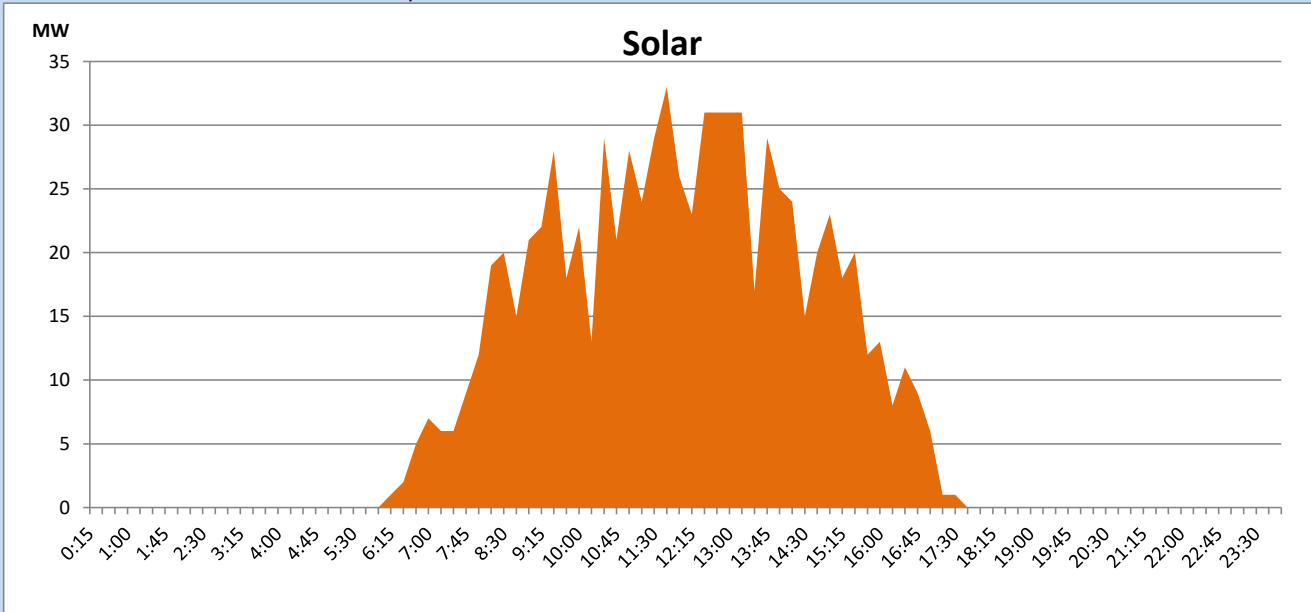
Based on Telemetered Power Stations only



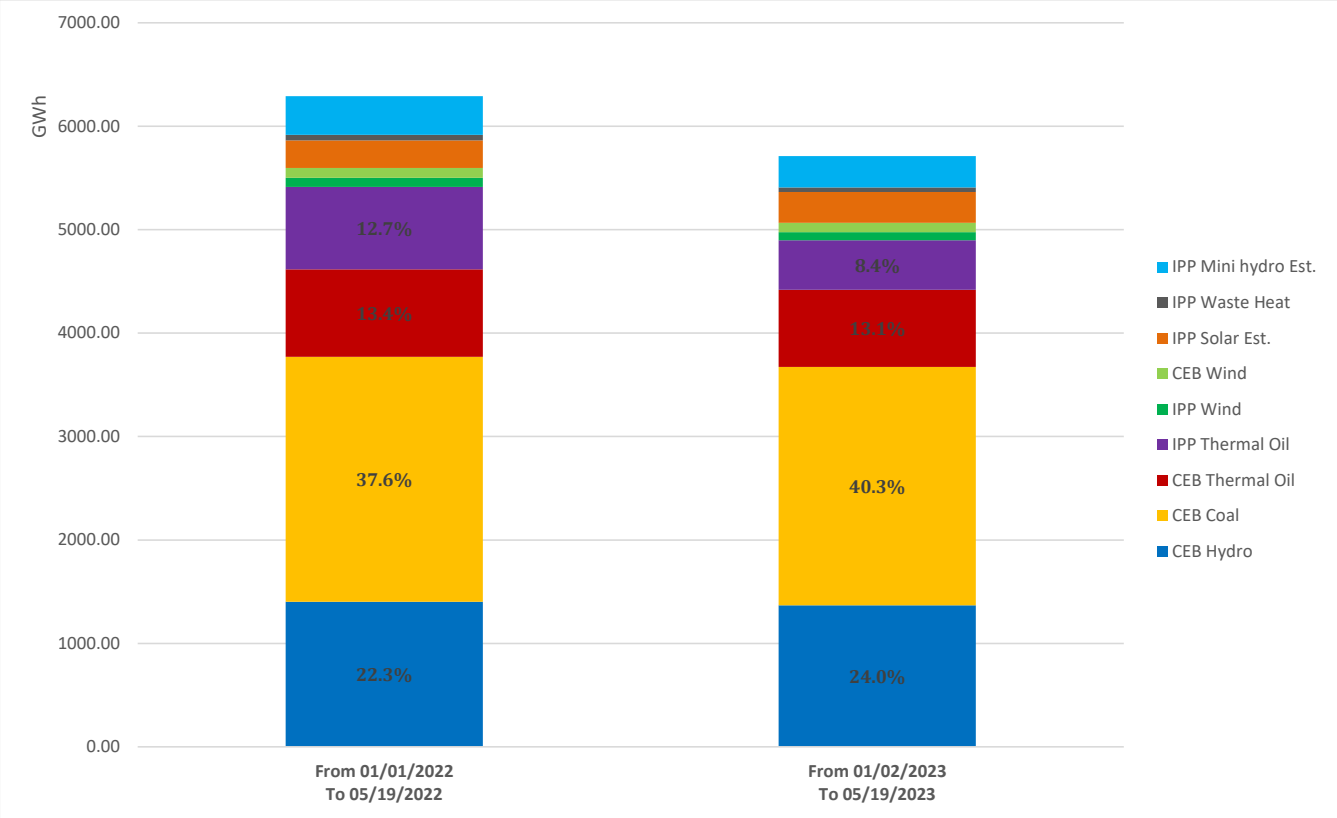
## Solar Generation during

May 19, 2023

Based on Telemetered Power Stations only



## Cumulative Dispatch Comparison with Last Year



The above figures are including contribution from roof top solar, non telemetered solar and mini hydro plants

**Thermal Plant Fuel types**

Power Station	Primary Fuel
CEB Thermal	
Sapugaskanda 1	Heavy Fuel
Sapugaskanda 2	Heavy Fuel
Kelanitissa Small Gas Turbines	Auto Diesel
GT 7 - Kelanitissa	Auto Diesel
Kelanitissa CCY	Naphtha or Diesel
Lakvijaya 1	Coal
Lakvijaya 2	Coal
Lakvijaya 3	Coal
Uthuru Janani	Heavy Fuel
Barge CEB	Heavy Fuel
KCCPS -2	Auto Diesel

Power Station	Primary Fuel
Private Thermal	
West Coast	Auto Diesel / Heavy Fuel

**Major Incidents reported during the day**

May 19, 2023

Nil