

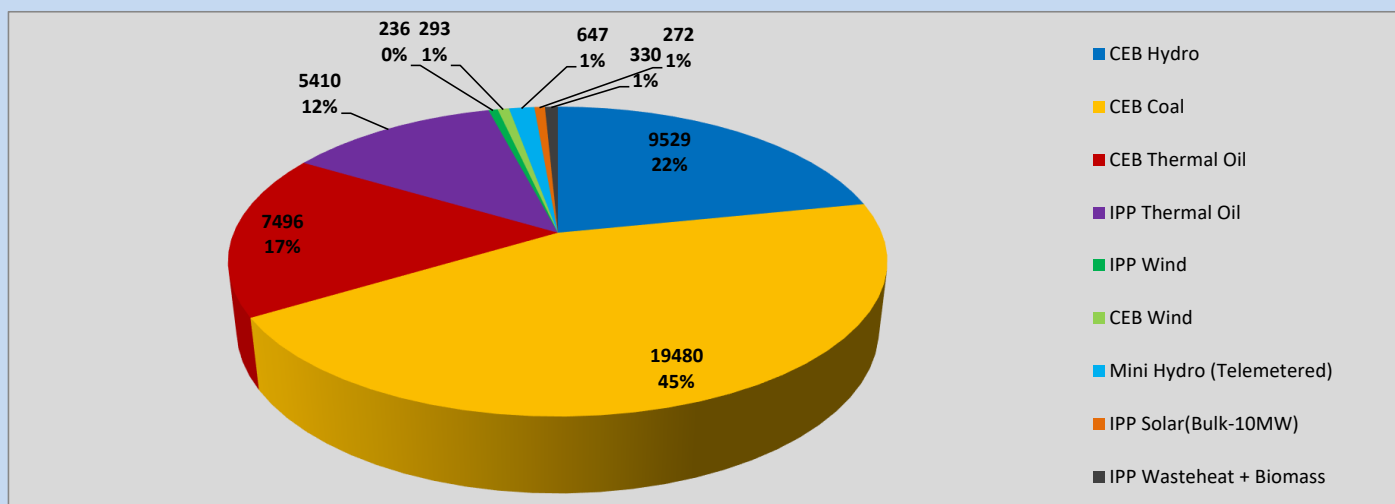
Generation and Reservoirs Statistics

April 19, 2023



PUBLIC UTILITIES COMMISSION OF SRI LANKA

Daily Generation Mix in MWh



Total Generation (Excluding estimated figures) =

43,693 MWh

Estimated figures of CEB generation report

Estimated unserved energy = 0.00 GWh

Estimated Mini Hydro (Non telemetered) = 1733 MWh

Estimated IPP Solar PV (Bulk 1-10MW) = 304 MWh

Estimated Solar Roof Top PV = 1640 MWh

Cumulative Dispatch

Following data excludes the contribution from roof top solar, non telemetered solar and mini hydro plants

For Current Month

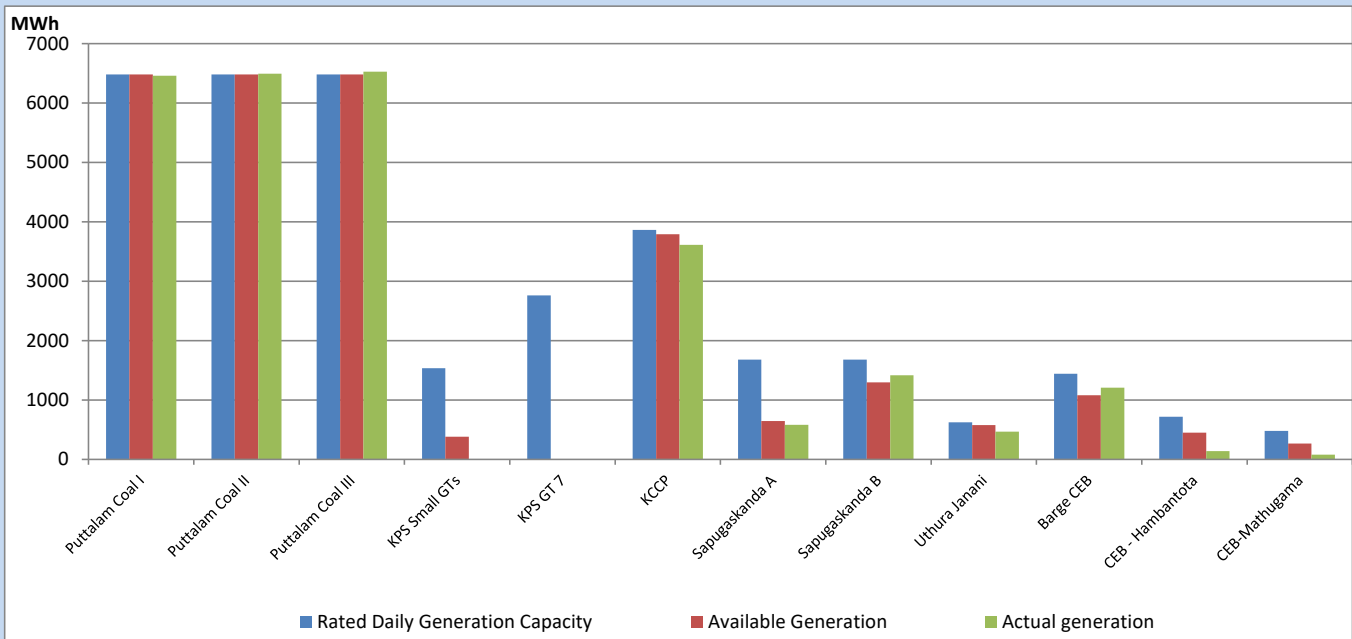
Category	Dispatch (GWh)	
CEB Hydro	209	29.71%
CEB Coal	253	35.92%
CEB Thermal Oil	107	15.15%
IPP Thermal	97	13.74%
SPP Wind	4	0.61%
CEB Wind	6	0.82%
Mini Hydro (Telemetered)	17	2.35%
IPP Solar(Bulk-10MW)	6	0.88%
IPP Wasteheat + BMP	6	0.81%
Total	703	

For Current Year

Category	Dispatch (GWh)	
CEB Hydro	1,130	27.44%
CEB Coal	1,775	43.09%
CEB Thermal Oil	577	14.00%
IPP Thermal	367	8.90%
SPP Wind	55	1.34%
CEB Wind	66	1.60%
Mini Hydro (Telemetered)	85	2.07%
IPP Solar(Bulk-10MW)	32	0.77%
IPP Wasteheat	32	0.78%
Total	4,119	

CEB owned Thermal Plant Dispatch

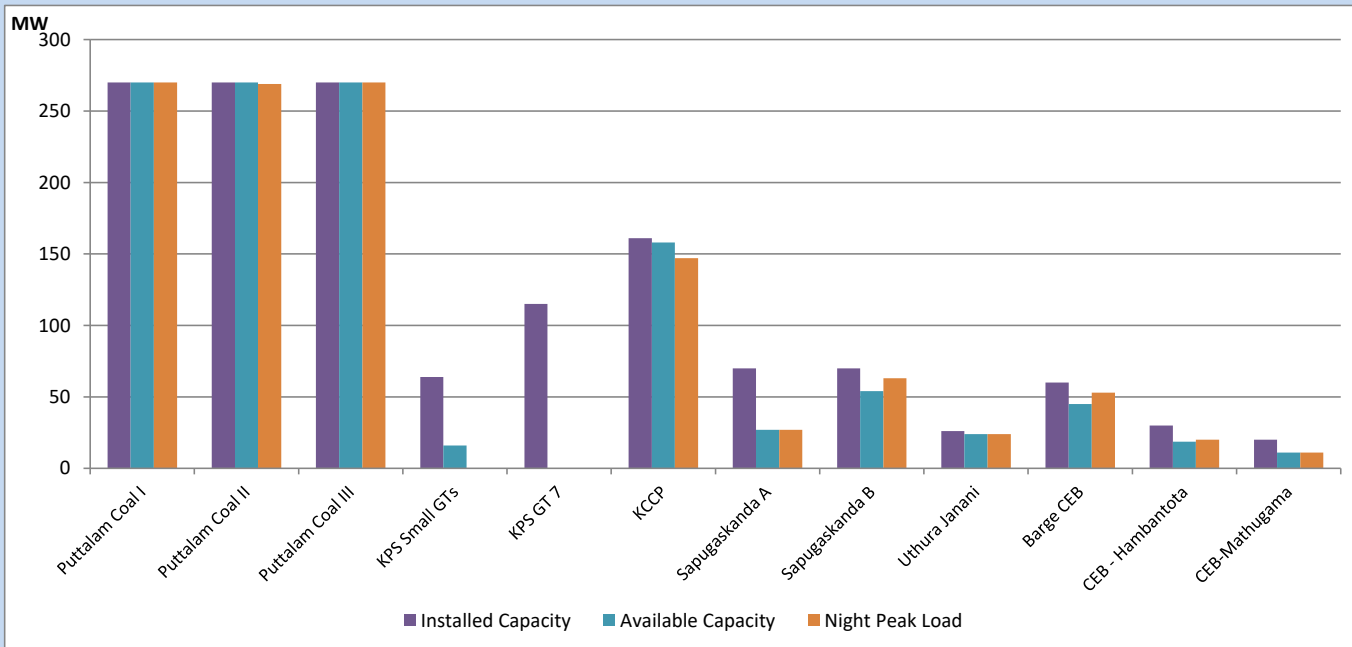
April 19, 2023



Available Generation is estimated based on plant availability at 6.00am on

April 20, 2023

CEB owned Thermal Plant Loading at the Night Peak

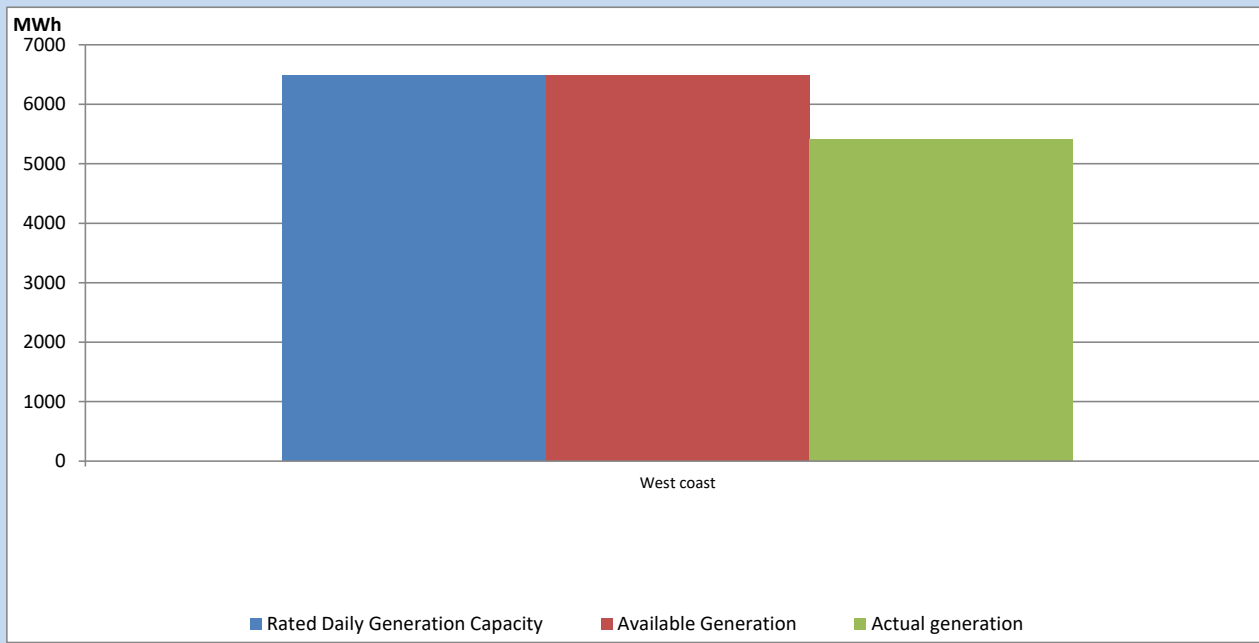


Note- Plant avilability is recorded at 6.00 am on

April 20, 2023

IPP owned Thermal Plant Dispatch

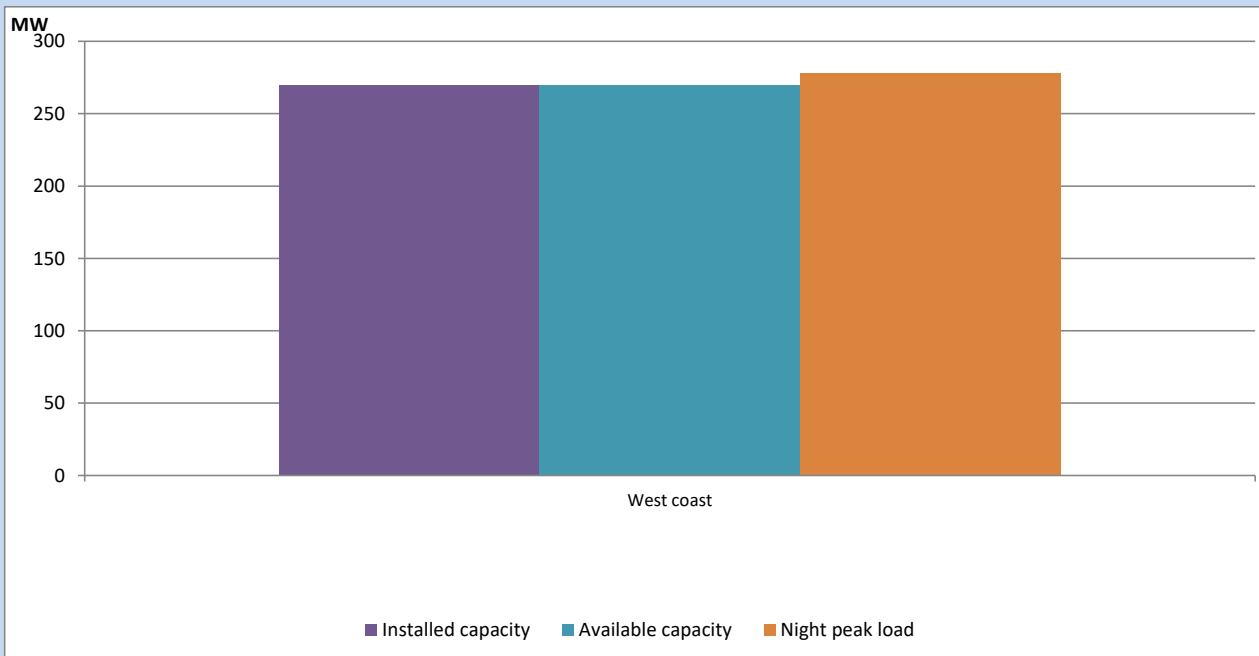
April 19, 2023



Available Generation is estimated based on plant availability at 6.00am on

April 20, 2023

IPP owned Thermal Plant Loading at the Night Peak

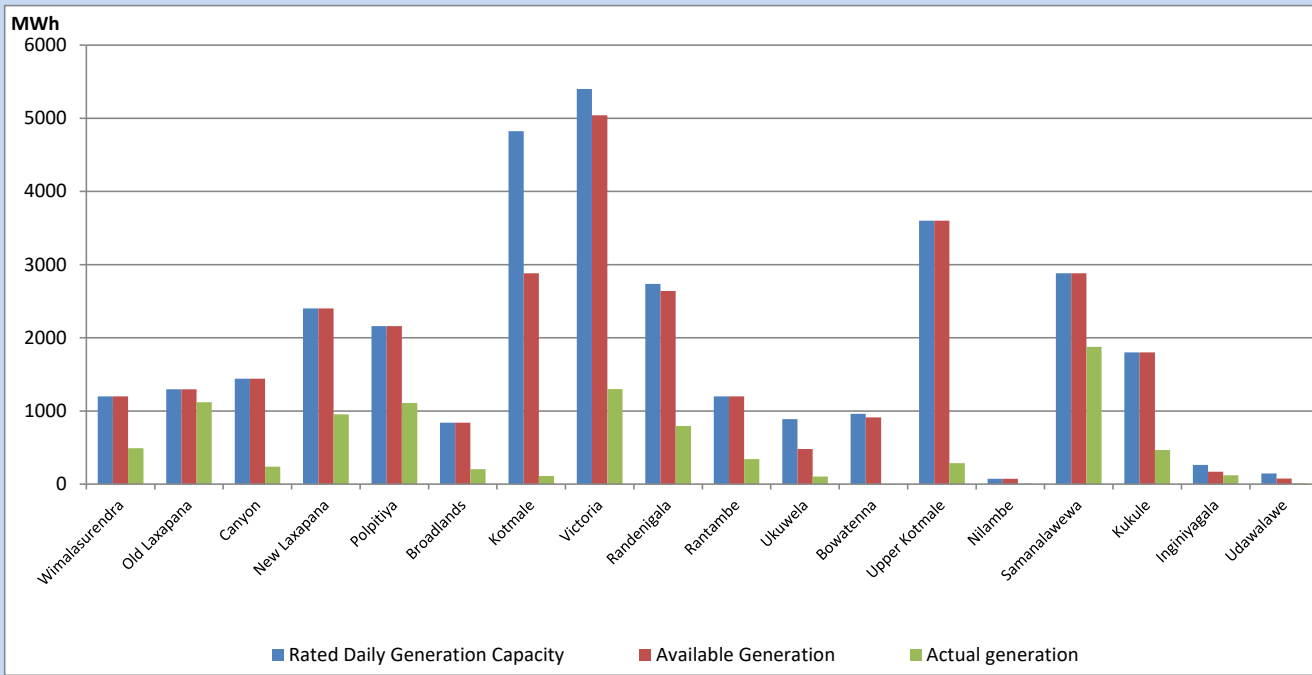


Note- Plant availability is recorded at 6.00 am on

April 20, 2023

Major Hydro Plant Dispatch

April 19, 2023

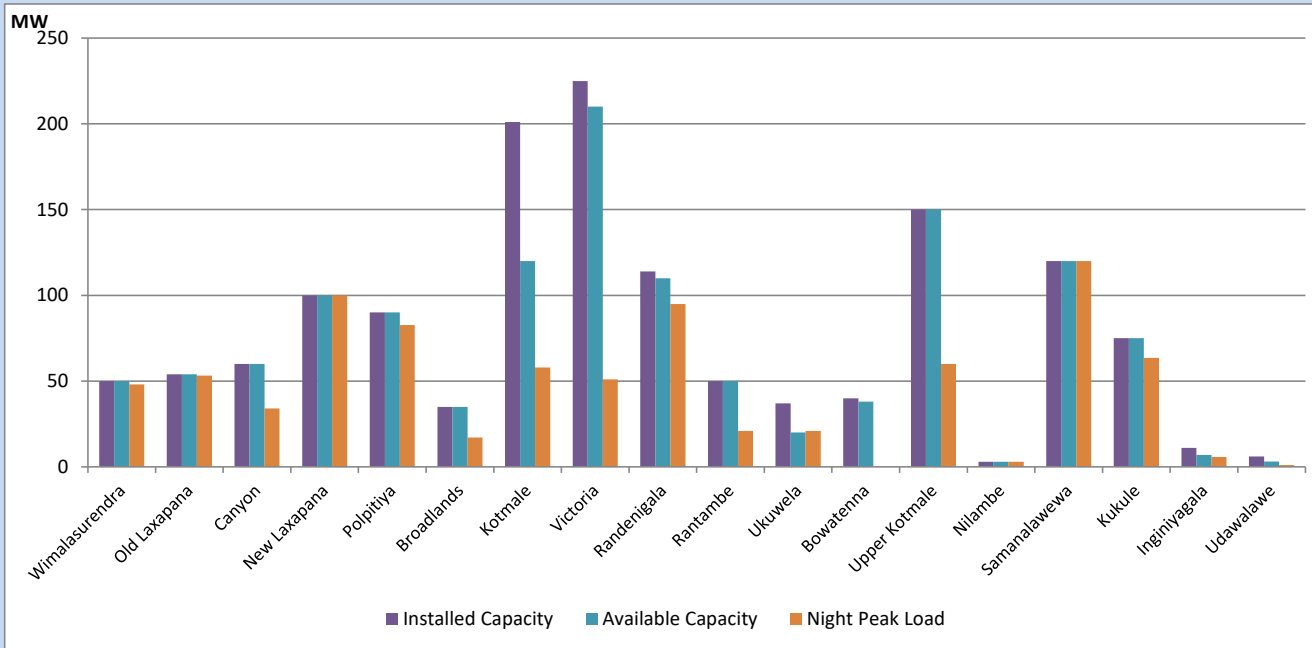


Available Generation is estimated based on plant availability at 6.00am on
Broadlands power plant is operating in the Commissioning Stage

April 20, 2023

Major Hydro Plant Loading at Night Peak

April 19, 2023



Note- Plant availability is recorded at 6.00 am on
Broadlands power plant is operating in the Commissioning Stage

April 20, 2023

Summary of Major Plant performance

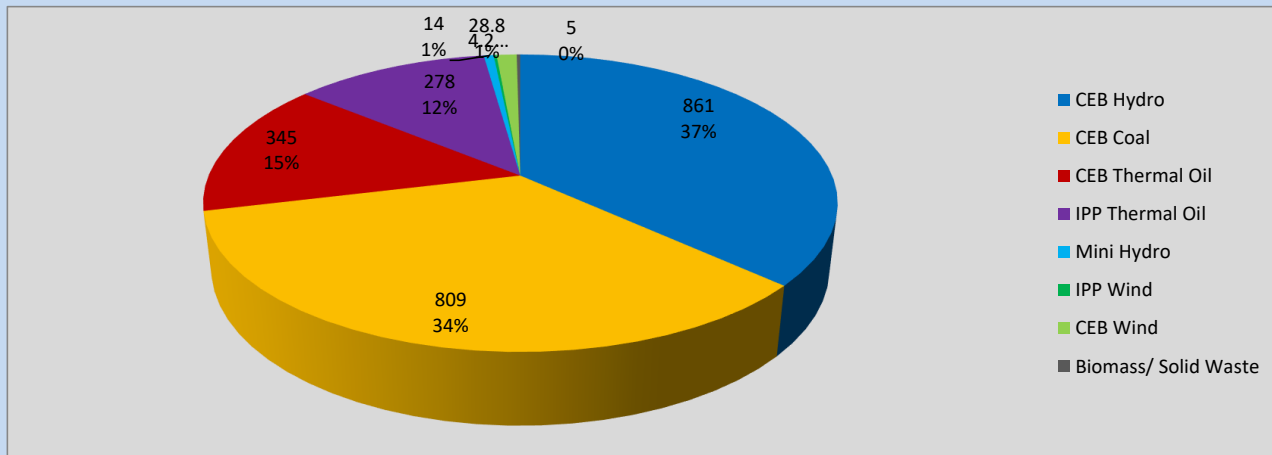
Plant	Installed Capacity	Plant Availability	Night peak Load	Plant Dispatch
	(MW)	(MW)	(MW)	(MWh)
Wimalasurendra	50	50	48	489
Old Laxapana	54	54	53	1,119
Canyon	60	60	34	239
New Laxapana	100	100	100	953
Polpitiya	90	90	83	1,110
Broadlands	35	35	17	203
Kotmale	201	120	58	110
Victoria	225	210	51	1,300
Randenigala	114	110	95	796
Rantambe	50	50	21	342
Ukuwela	37	20	21	104
Bowatenna	40	38	0	1
Upper Kotmale	150	150	60	286
Nilambe	3	3	3	6
Samanalawewa	120	120	120	1,875
Kukule	75	75	64	466
Inginiyagala	11	7	6	121
Udawalawe	6	3	1	9
Puttalam Coal I	270	270	270	6,458
Puttalam Coal II	270	270	269	6,495
Puttalam Coal III	270	270	270	6,527
KPS Small GTs	64	16	0	0
KPS GT 7	115	0	0	0
KCCP	161	158	147	3,611
Sapugaskanda A	70	27	27	581
Sapugaskanda B	70	54	63	1,415
Uthura Janani	26	24	24	466
Barge CEB	60	45	53	1,207
CEB-Hambantota	30	19	20	138
CEB-Mathugama	20	11	11	78
ACE Matara	24	0	0	0
Asia Power	50	0	0	0
Sojitz Kelanitissa	163	0	0	0
West Coast	270	270	278	5,410
Nothern Power	36	0	0	0
ACE Embilipitiya	93	0	0	0
Total	3,483	2,729	2,318	43,693

Plant availability is the availability recorded at 6 am on

April 20, 2023

Contribution to the Night Peak in MW

April 19, 2023

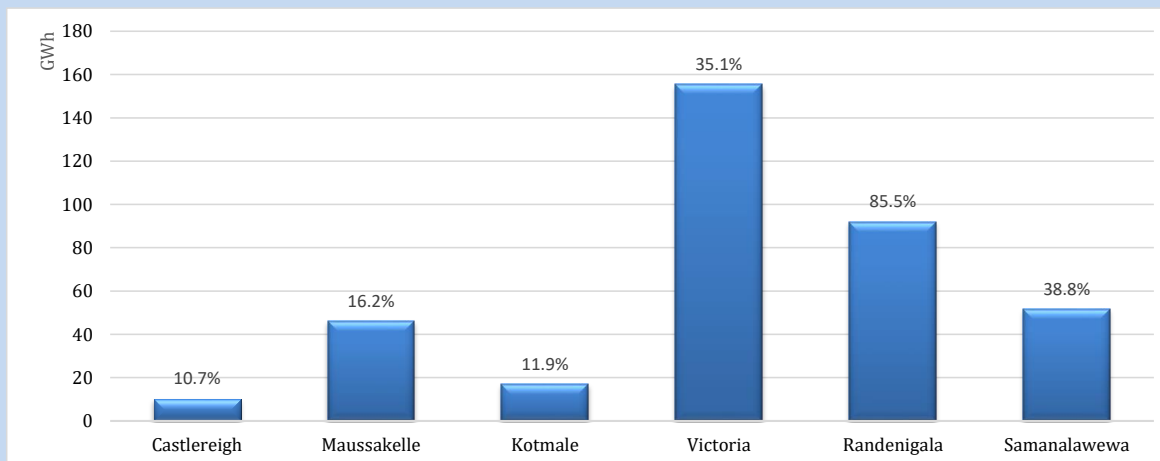


Night Peak*	2,345 MW
Day Peak	2,038 MW
Minimum Demand	1,372 MW

Above figures are excluding contribution from roof top solar, non telemetered solar and mini hydro plants

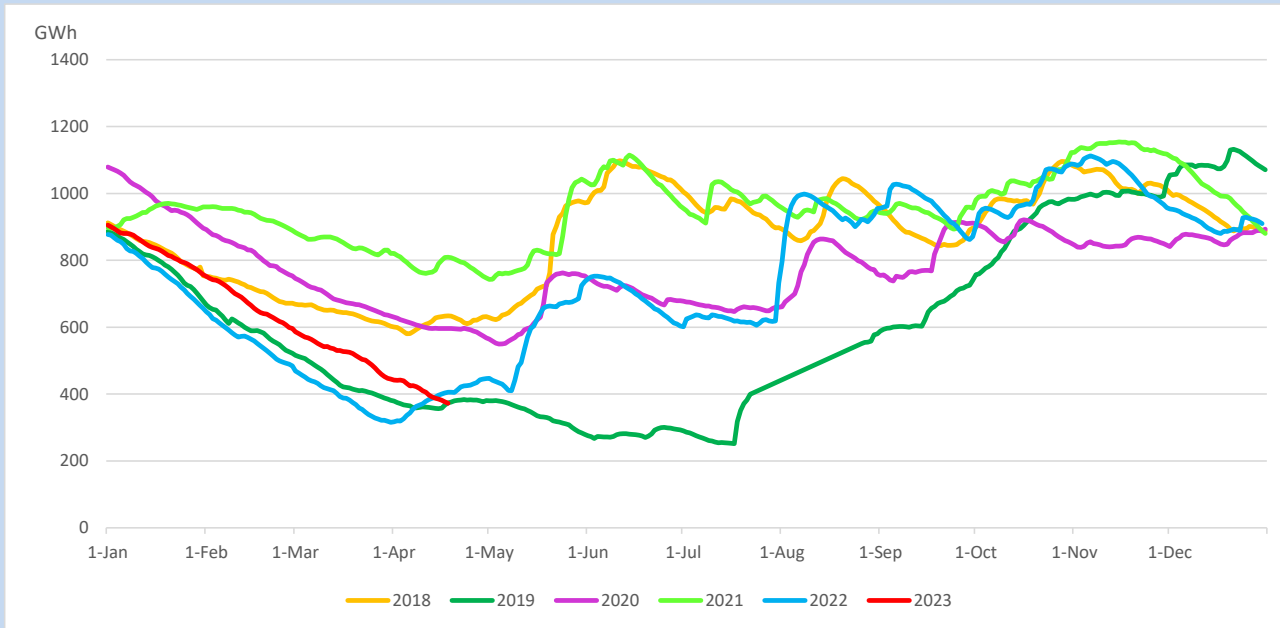
Reservoir Levels -

as at 06.00 Hr on April 20, 2023

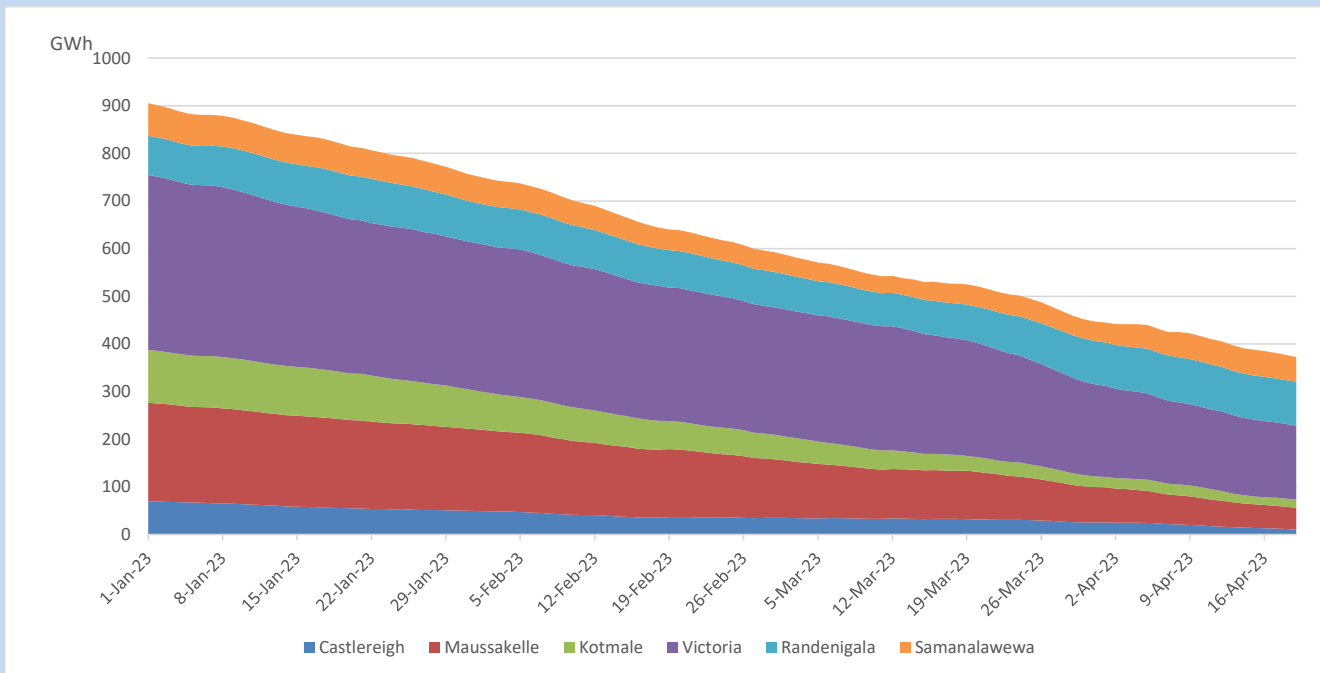


Total Reservoir Level	372.5 GWh
% of Total capacity	30.9%

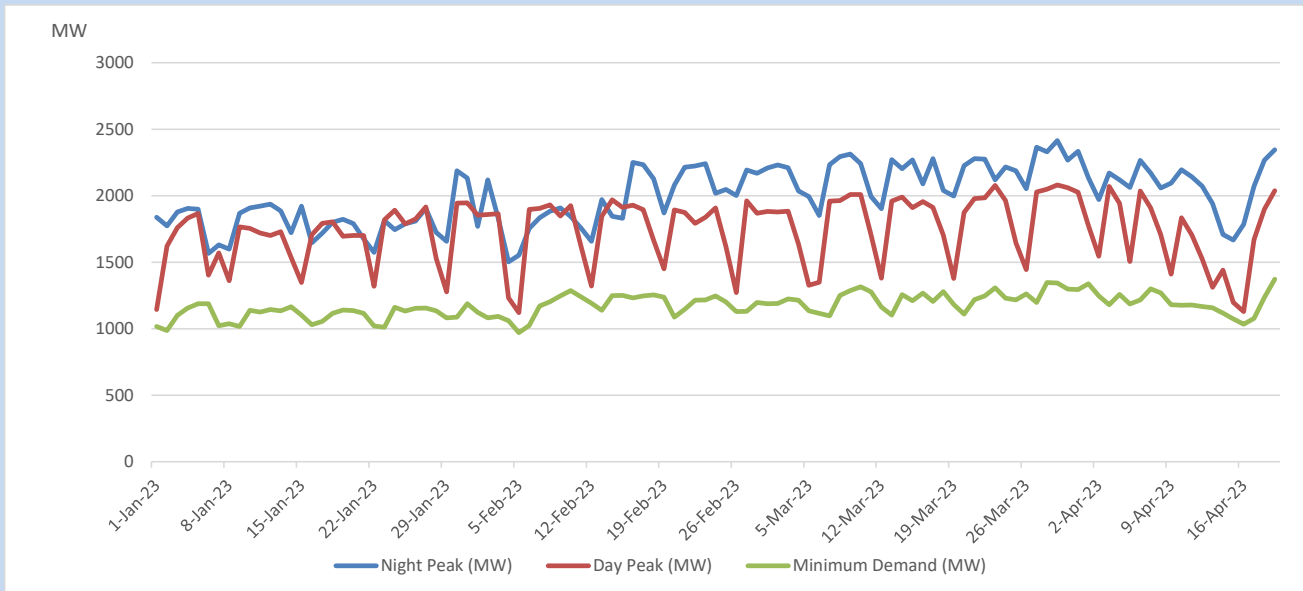
Comparison of Total Reservoir Storage Levels with Past Years



Variation of Major Hydro Reservoir Levels in the current year (GWh)



Variation of Demand during the current year

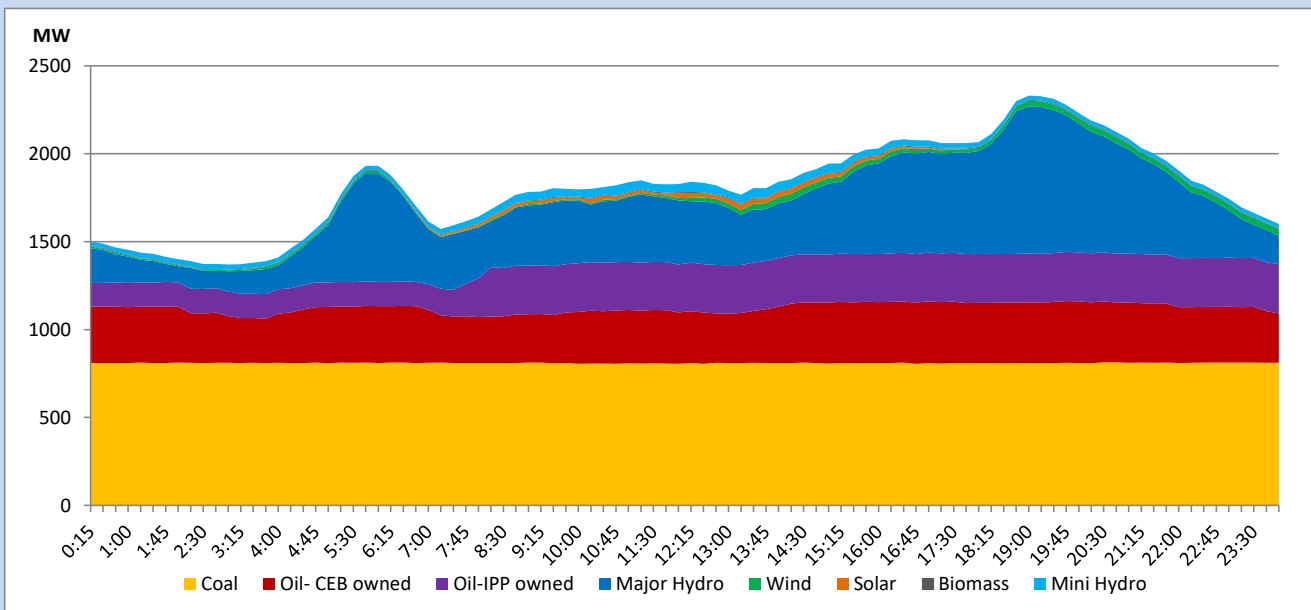


The above figures are excluding contribution from roof top solar, non telemetered solar and mini hydro plants

Daily Load Curve

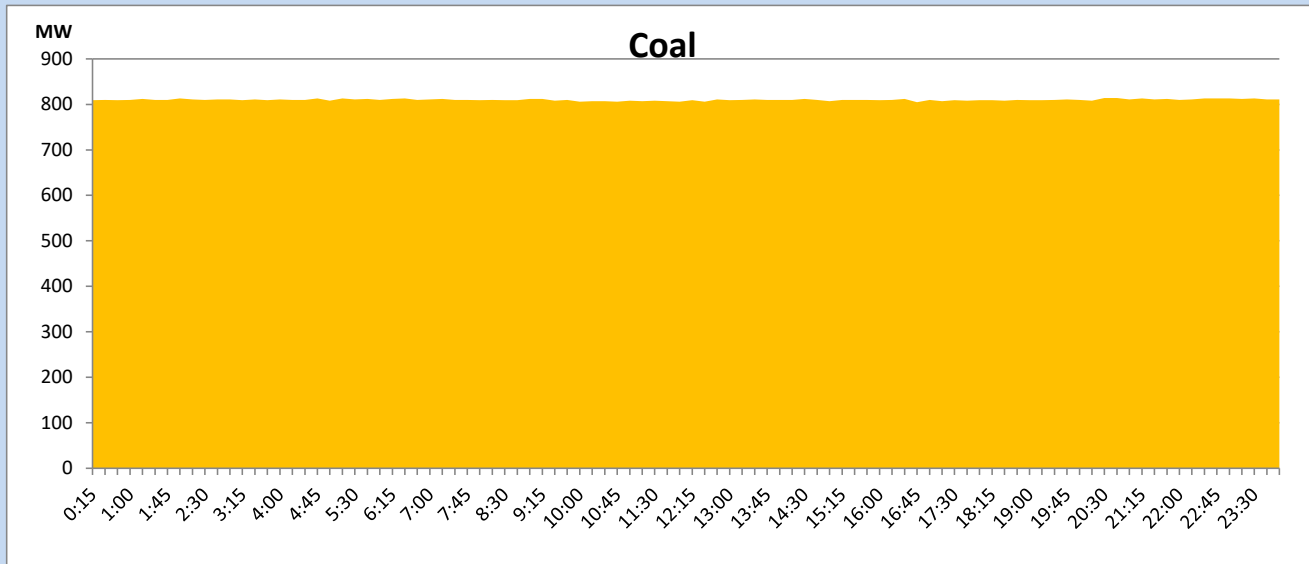
April 19, 2023

Solar and wind data is based on Telemetered Power Stations only



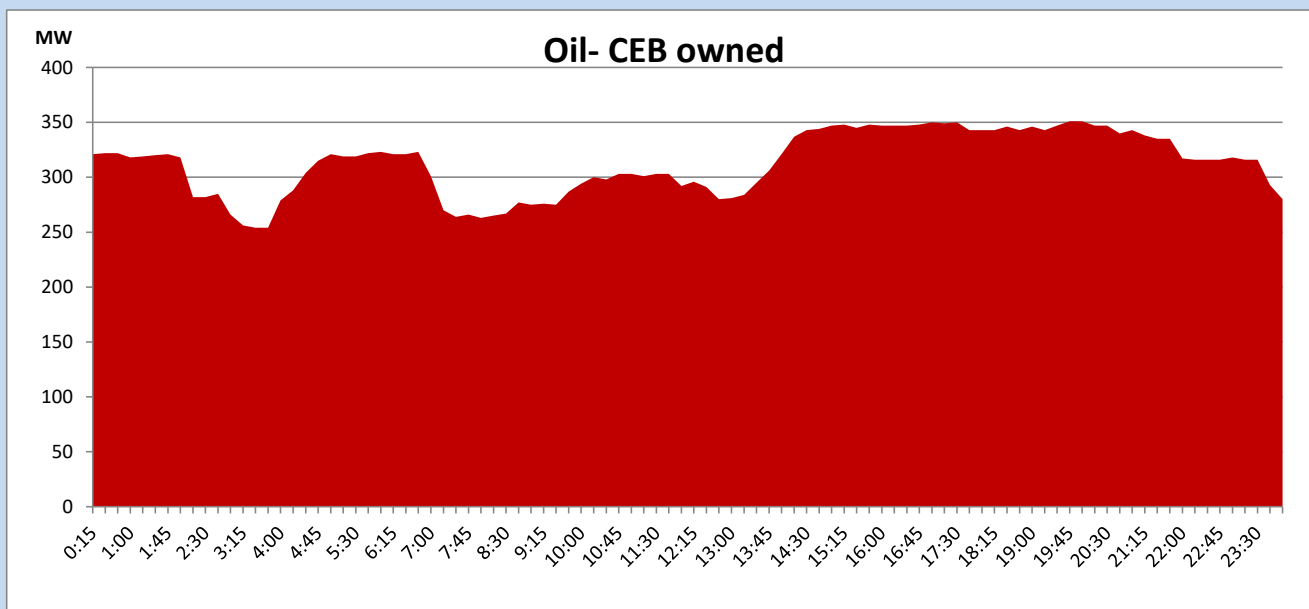
Coal Generation during

April 19, 2023



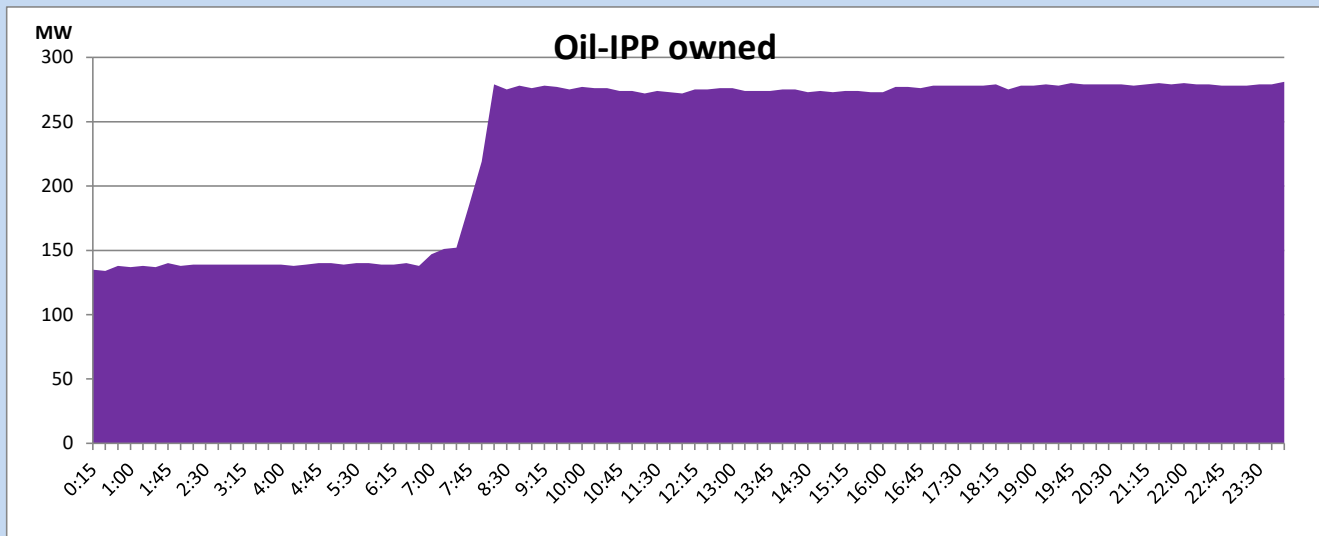
CEB Oil Plant Generation during

April 19, 2023



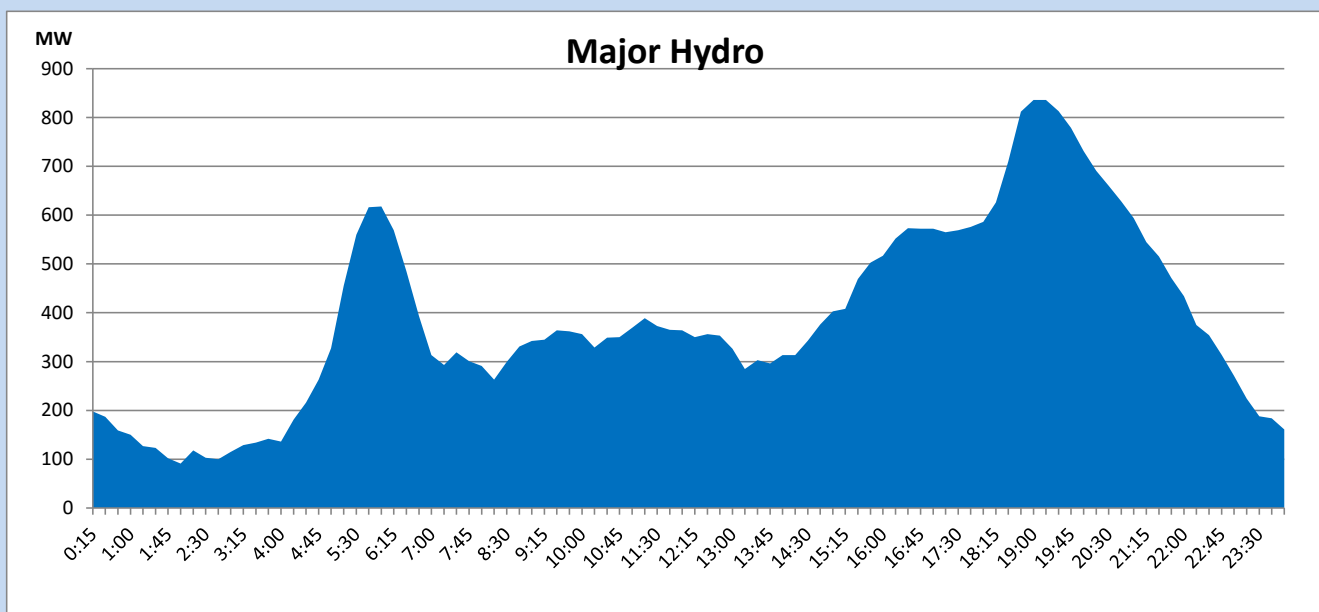
IPP Oil Plant Generation during

April 19, 2023



Major Hydro Generation during

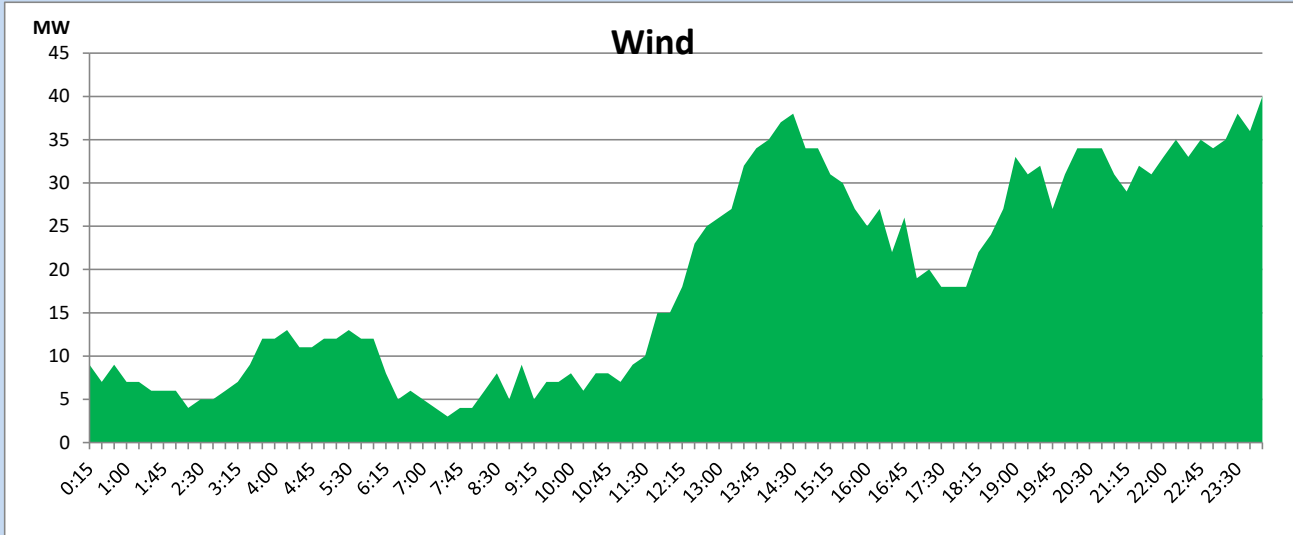
April 19, 2023



Wind Generation during

April 19, 2023

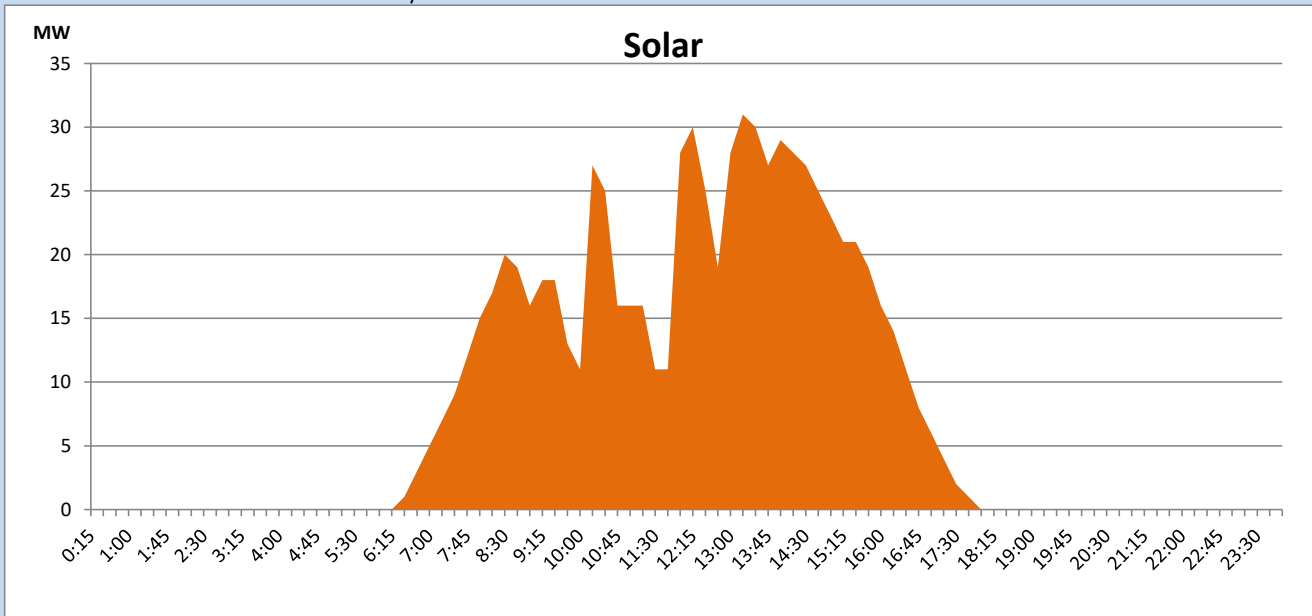
Based on Telemetered Power Stations only



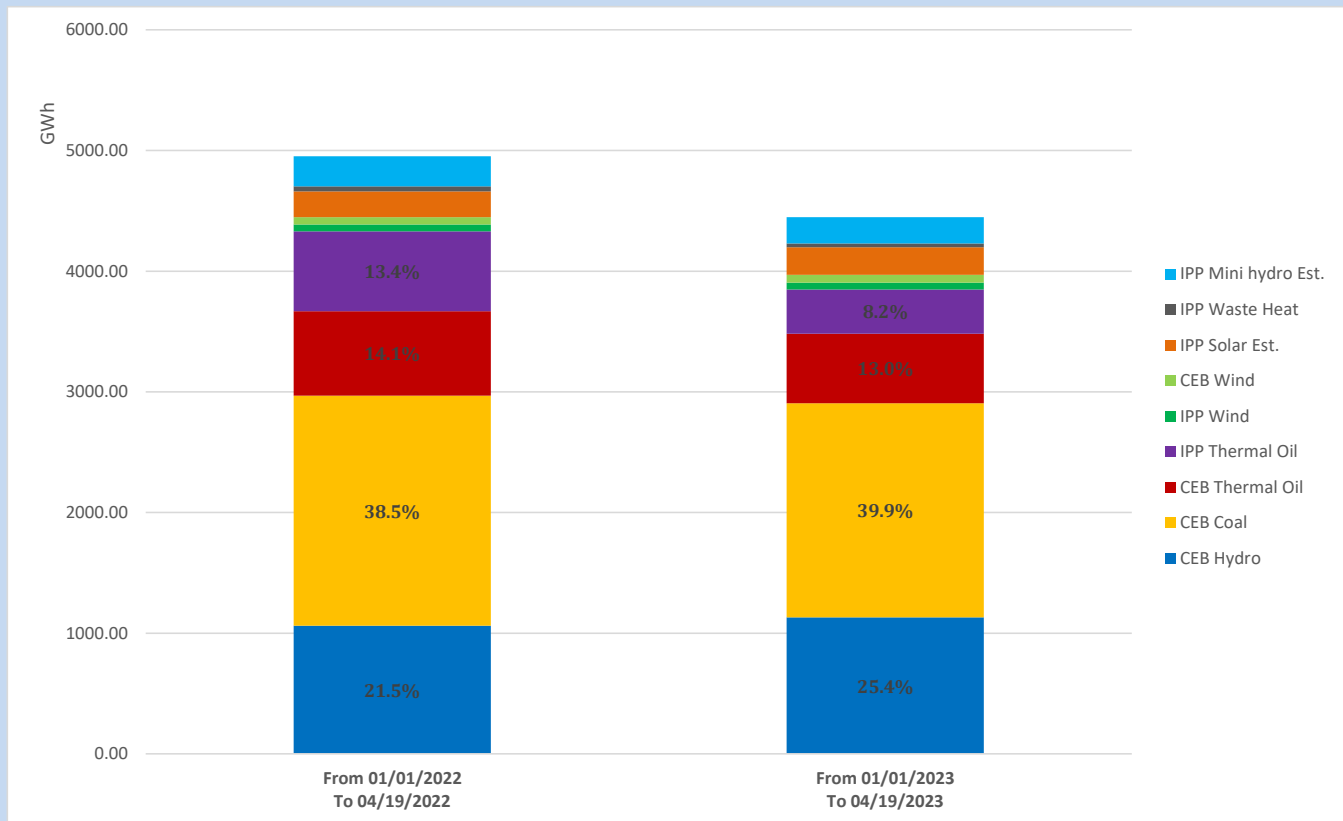
Solar Generation during

April 19, 2023

Based on Telemetered Power Stations only



Cumulative Dispatch Comparison with Last Year



The above figures are including contribution from roof top solar, non telemetered solar and mini hydro plants

Thermal Plant Fuel types

Power Station	Primary Fuel
CEB Thermal	
Sapugaskanda 1	Heavy Fuel
Sapugaskanda 2	Heavy Fuel
Kelanitissa Small Gas Turbines	Auto Diesel
GT 7 - Kelanitissa	Auto Diesel
Kelanitissa CCY	Naphtha or Diesel
Lakvijaya 1	Coal
Lakvijaya 2	Coal
Lakvijaya 3	Coal
Uthuru Janani	Heavy Fuel
Barge CEB	Heavy Fuel

Power Station	Primary Fuel
Private Thermal	
West Coast	Auto Diesel / Heavy Fuel

Major Incidents reported during the day

April 19, 2023

- 1) Power Barge unit 4 was not available from 09:23hrs to 13:11hrs due to high lube oil pressure.
- 2) Power Barge unit 1 was made unavailable at 05:20hrs(20.04.2023) due to a jacket water leakage. Power Barge unit 1 is yet to resume generation.