

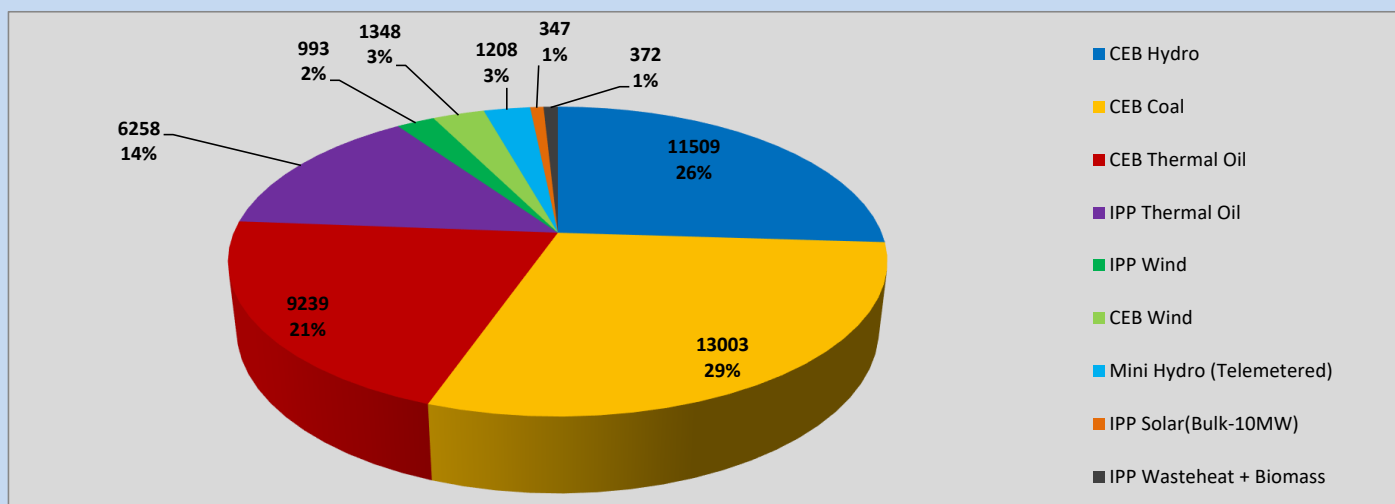
Generation and Reservoirs Statistics

May 18, 2023



PUBLIC UTILITIES COMMISSION OF SRI LANKA

Daily Generation Mix in MWh



Total Generation (Excluding estimated figures) =

44,277 MWh

Estimated figures of CEB generation report

Estimated unserved energy = 0.00 GWh

Estimated Mini Hydro (Non telemetered) = 2782 MWh

Estimated IPP Solar PV (Bulk 1-10MW) = 304 MWh

Estimated Solar Roof Top PV = 1920 MWh

Cumulative Dispatch

Following data excludes the contribution from roof top solar, non telemetered solar and mini hydro plants

For Current Month

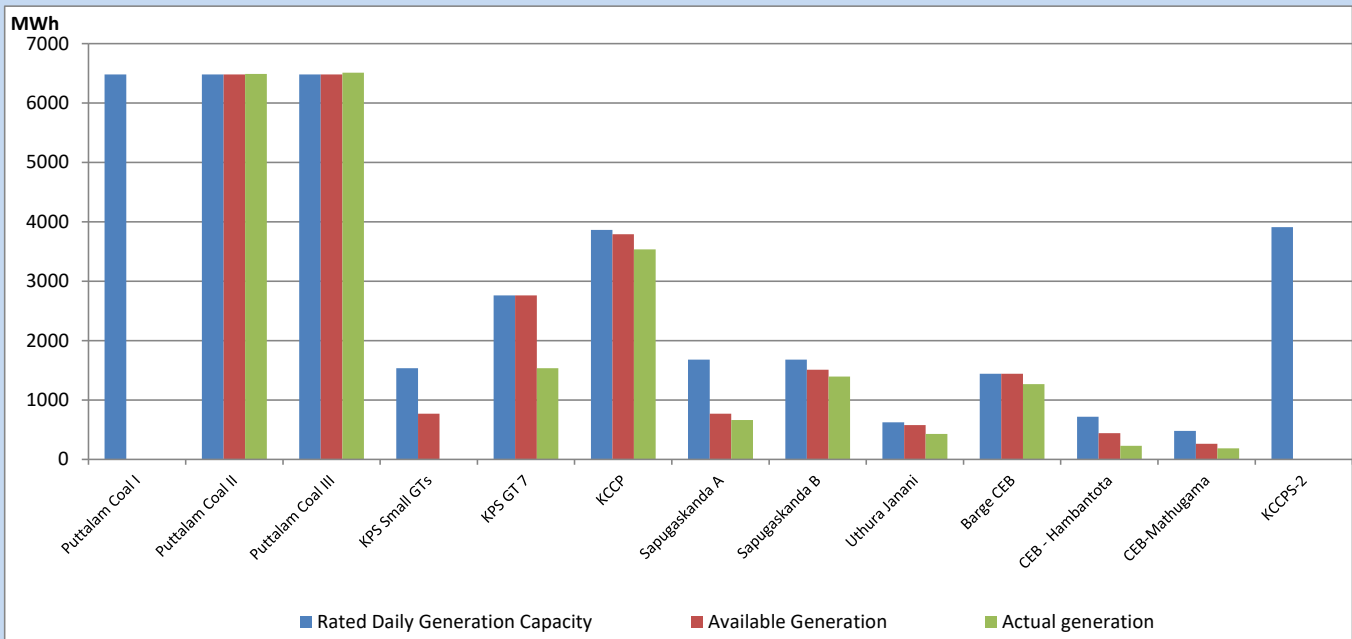
Category	Dispatch (GWh)	
CEB Hydro	159	23.79%
CEB Coal	305	45.54%
CEB Thermal Oil	84	12.55%
IPP Thermal	54	7.99%
SPP Wind	18	2.73%
CEB Wind	19	2.88%
Mini Hydro (Telemetered)	19	2.80%
IPP Solar(Bulk-10MW)	5	0.70%
IPP Wasteheat + BMP	7	1.00%
Total	670	

For Current Year

Category	Dispatch (GWh)	
CEB Hydro	1,361	26.05%
CEB Coal	2,292	43.88%
CEB Thermal Oil	739	14.15%
IPP Thermal	471	9.02%
SPP Wind	76	1.46%
CEB Wind	89	1.71%
Mini Hydro (Telemetered)	114	2.19%
IPP Solar(Bulk-10MW)	39	0.75%
IPP Wasteheat	42	0.79%
Total	5,224	

CEB owned Thermal Plant Dispatch

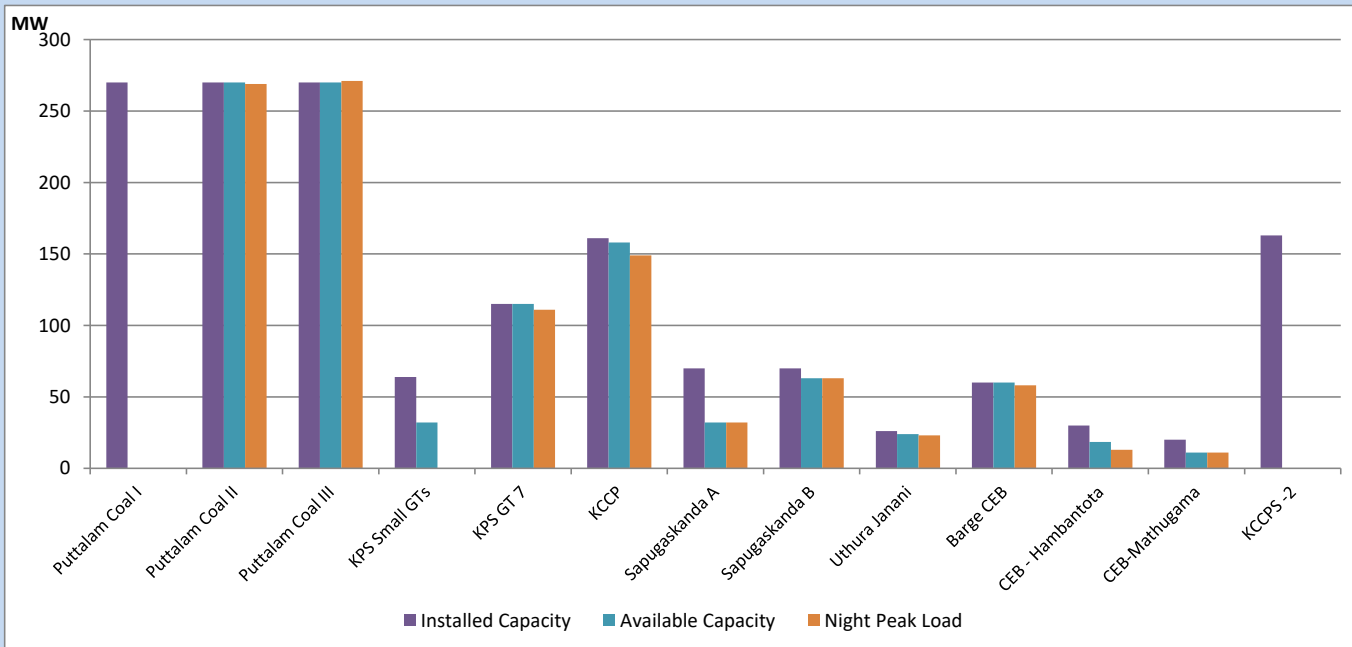
May 18, 2023



Available Generation is estimated based on plant availability at 6.00am on

May 19, 2023

CEB owned Thermal Plant Loading at the Night Peak



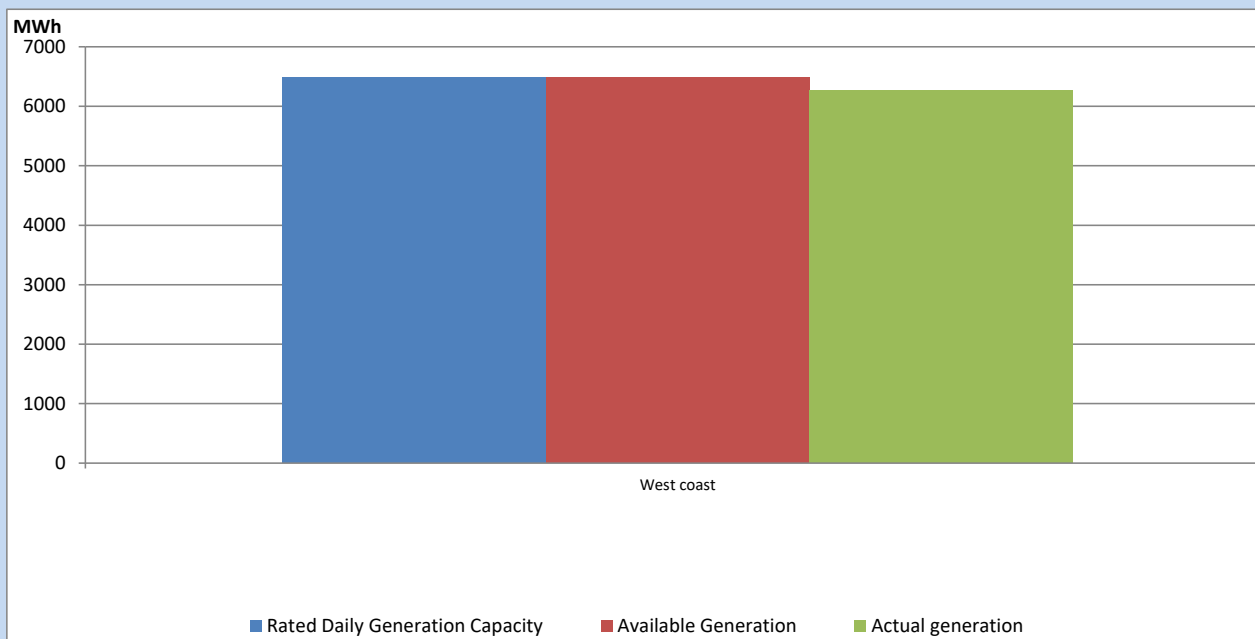
Note-

Plant availability is recorded at 6.00 am on

May 19, 2023

IPP owned Thermal Plant Dispatch

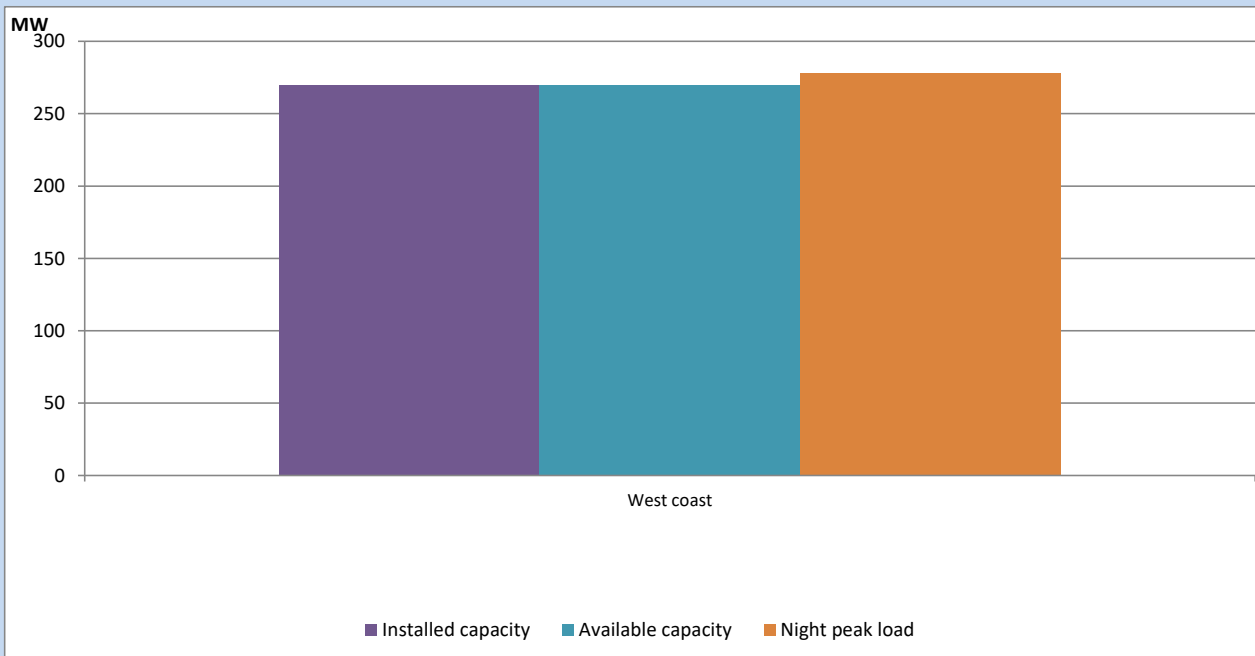
May 18, 2023



Available Generation is estimated based on plant availability at 6.00am on

May 19, 2023

IPP owned Thermal Plant Loading at the Night Peak

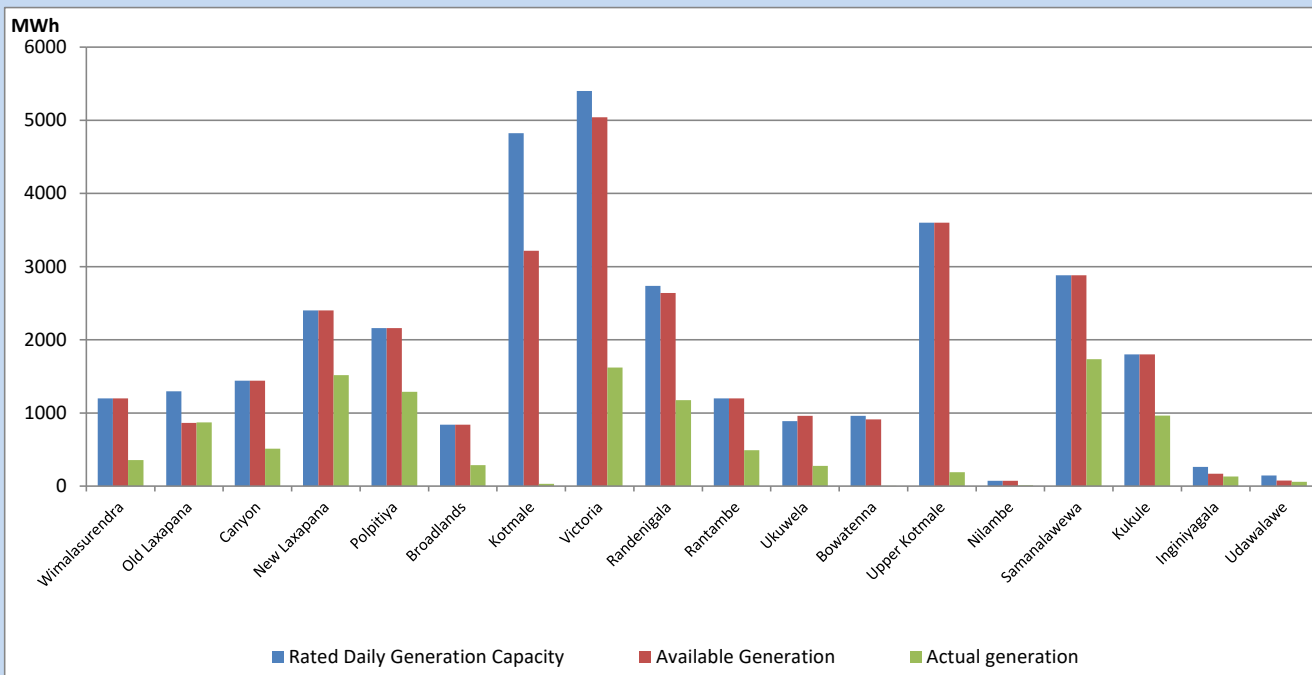


Note- Plant availability is recorded at 6.00 am on

May 19, 2023

Major Hydro Plant Dispatch

May 18, 2023

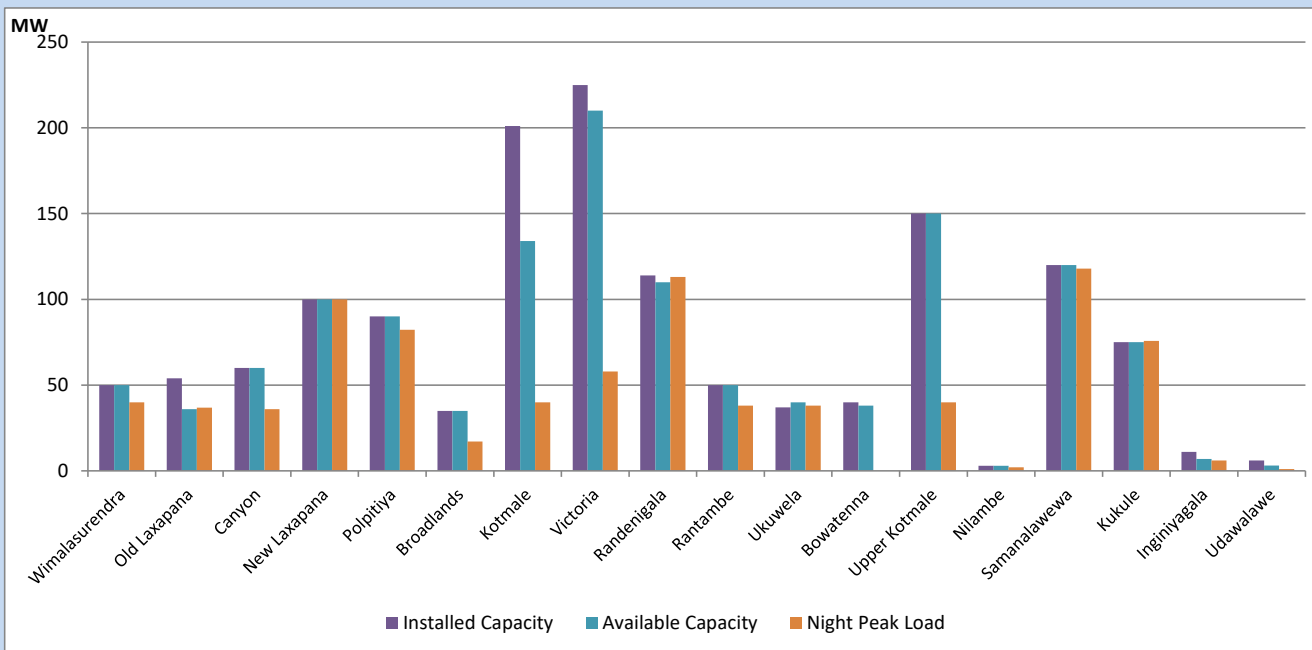


Available Generation is estimated based on plant availability at 6.00am on
Broadlands power plant is operating in the Commissioning Stage

May 19, 2023

Major Hydro Plant Loading at Night Peak

May 18, 2023



Note- Plant availability is recorded at 6.00 am on
Broadlands power plant is operating in the Commissioning Stage

May 19, 2023

Summary of Major Plant performance

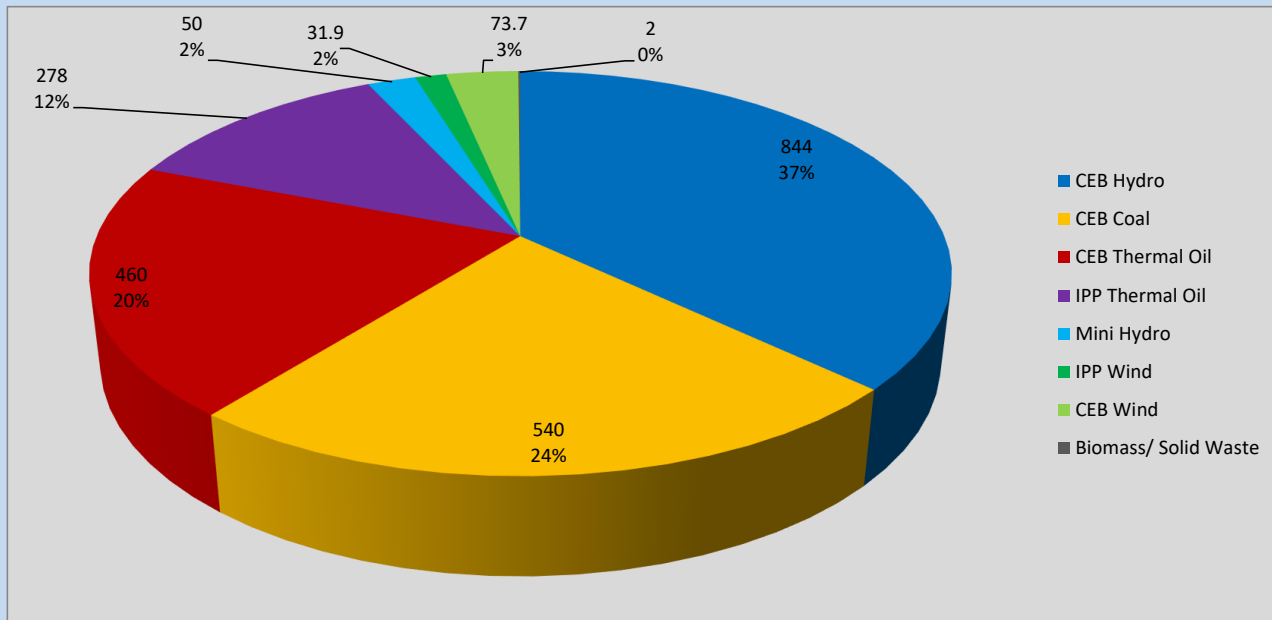
Plant	Installed Capacity	Plant Availability	Night peak Load	Plant Dispatch
	(MW)	(MW)	(MW)	(MWh)
Wimalasurendra	50	50	40	357
Old Laxapana	54	36	37	869
Canyon	60	60	36	512
New Laxapana	100	100	100	1,516
Polpitiya	90	90	82	1,288
Broadlands	35	35	17	285
Kotmale	201	134	40	30
Victoria	225	210	58	1,621
Randenigala	114	110	113	1,174
Rantambe	50	50	38	491
Ukuwela	37	40	38	275
Bowatenna	40	38	0	2
Upper Kotmale	150	150	40	191
Nilambe	3	3	2	10
Samanalawewa	120	120	118	1,736
Kukule	75	75	76	963
Inginiyagala	11	7	6	131
Udawalawe	6	3	1	58
Puttalam Coal I	270	0	0	0
Puttalam Coal II	270	270	269	6,490
Puttalam Coal III	270	270	271	6,513
KPS Small GTs	64	32	0	0
KPS GT 7	115	115	111	1,536
KCCP	161	158	149	3,535
Sapugaskanda A	70	32	32	662
Sapugaskanda B	70	63	63	1,396
Uthura Janani	26	24	23	429
Barge CEB	60	60	58	1,266
CEB-Hambantota	30	18	13	228
CEB-Mathugama	20	11	11	187
ACE Matara	24	0	0	0
Asia Power	50	0	0	0
KCCPS -2	163	0	0	0
West Coast	270	270	278	6,258
Nothern Power	36	0	0	0
ACE Embilipitiya	93	0	0	0
Total	3,483	2,635	2,277	44,277

Plant availability is the availability recorded at 6 am on

May 19, 2023

Contribution to the Night Peak in MW

May 18, 2023

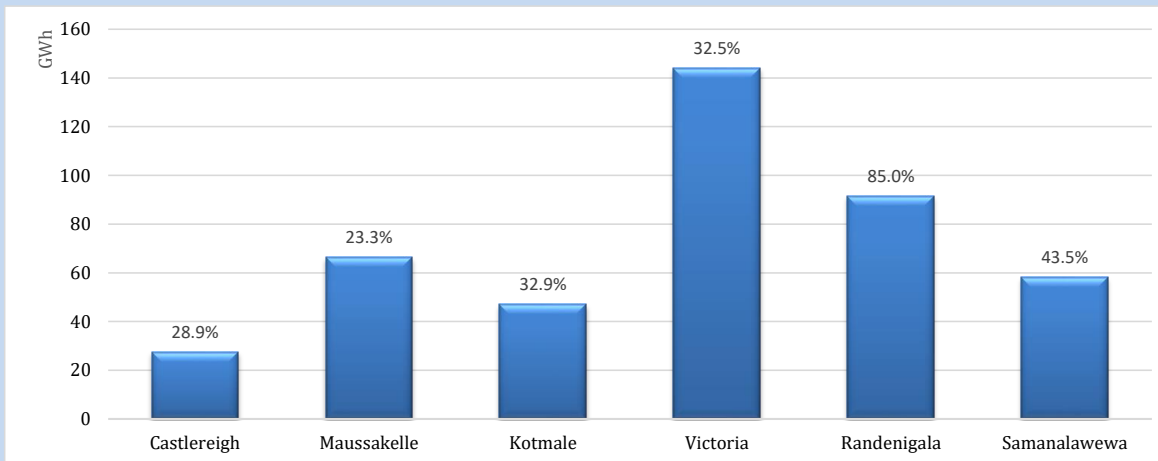


Night Peak*	2,279 MW
Day Peak	2,100 MW
Minimum Demand	1,822 MW

Above figures are excluding contribution from roof top solar, non telemetered solar and mini hydro plants

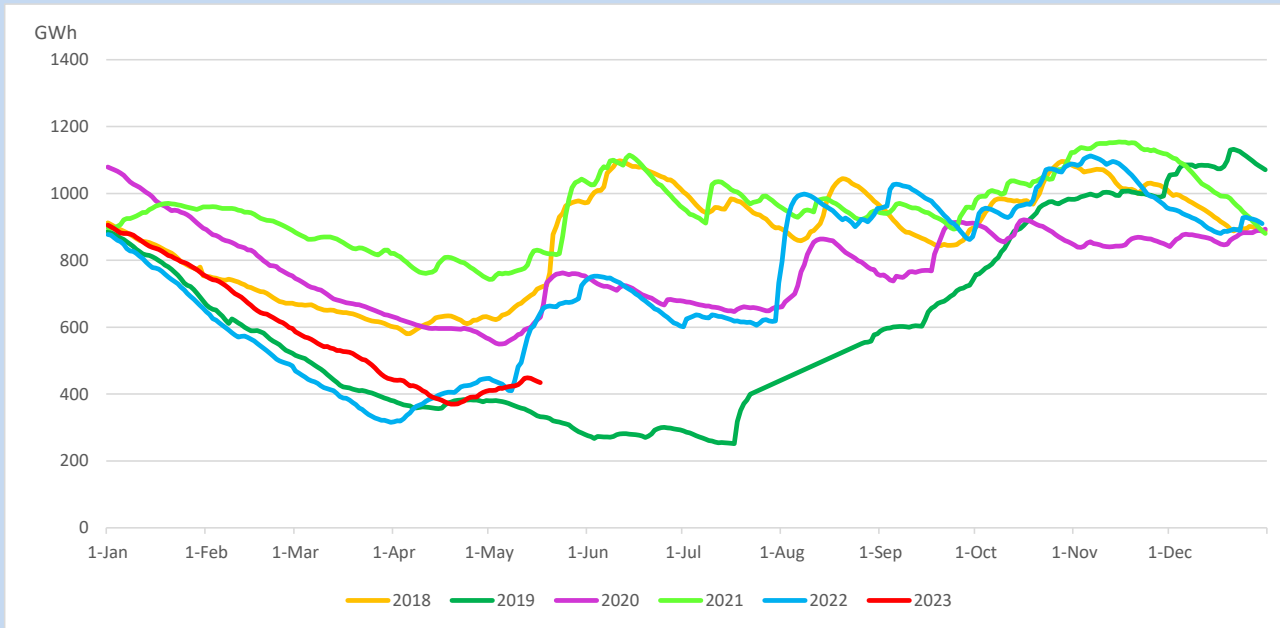
Reservoir Levels -

as at 06.00 Hr on May 19, 2023

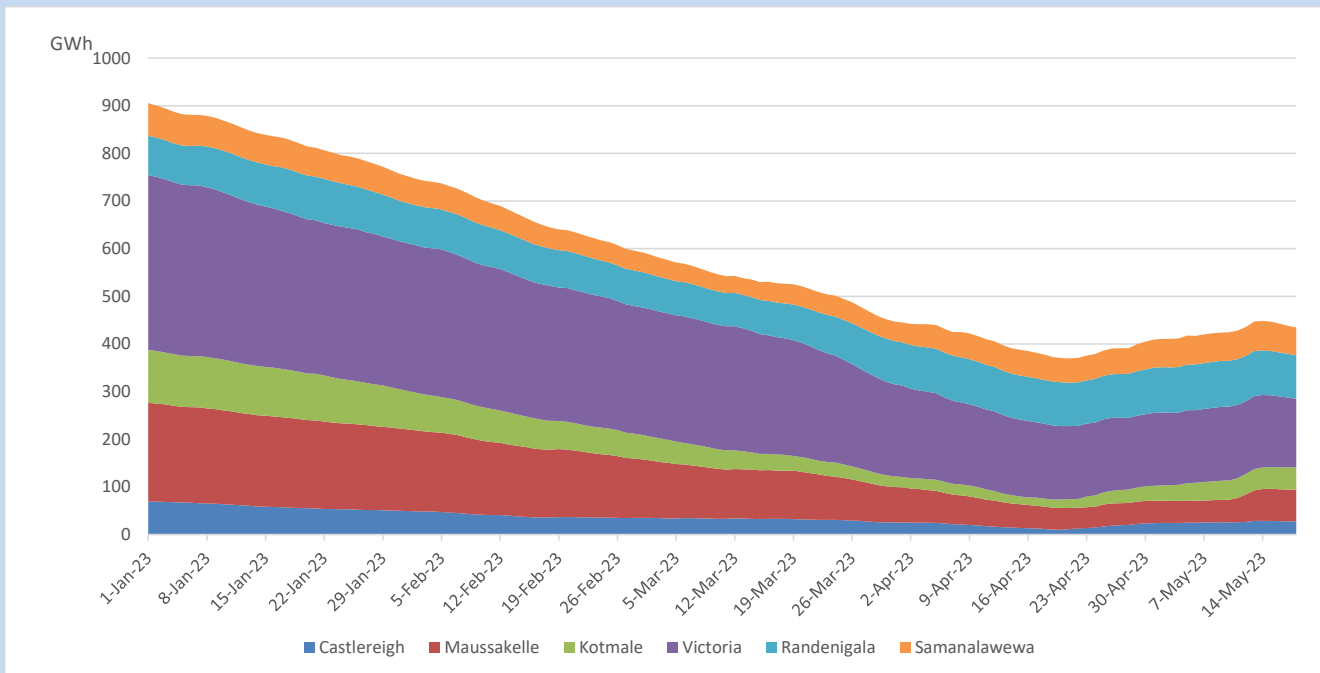


Total Reservoir Level	434.3 GWh
% of Total capacity	36.0%

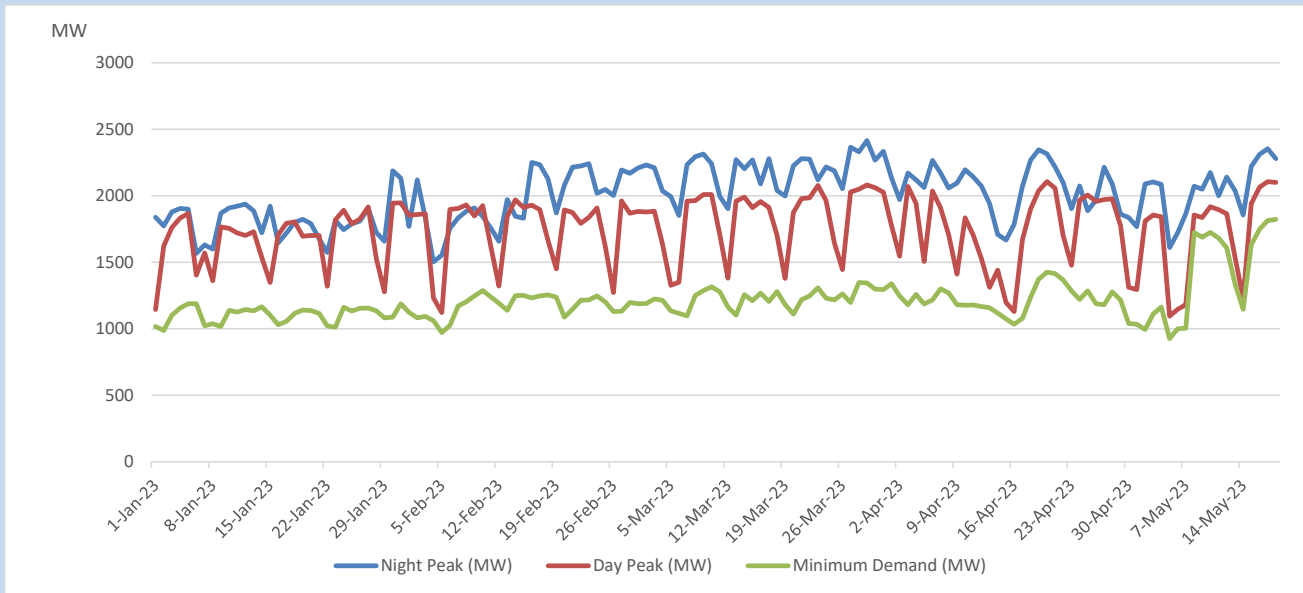
Comparison of Total Reservoir Storage Levels with Past Years



Variation of Major Hydro Reservoir Levels in the current year (GWh)



Variation of Demand during the current year

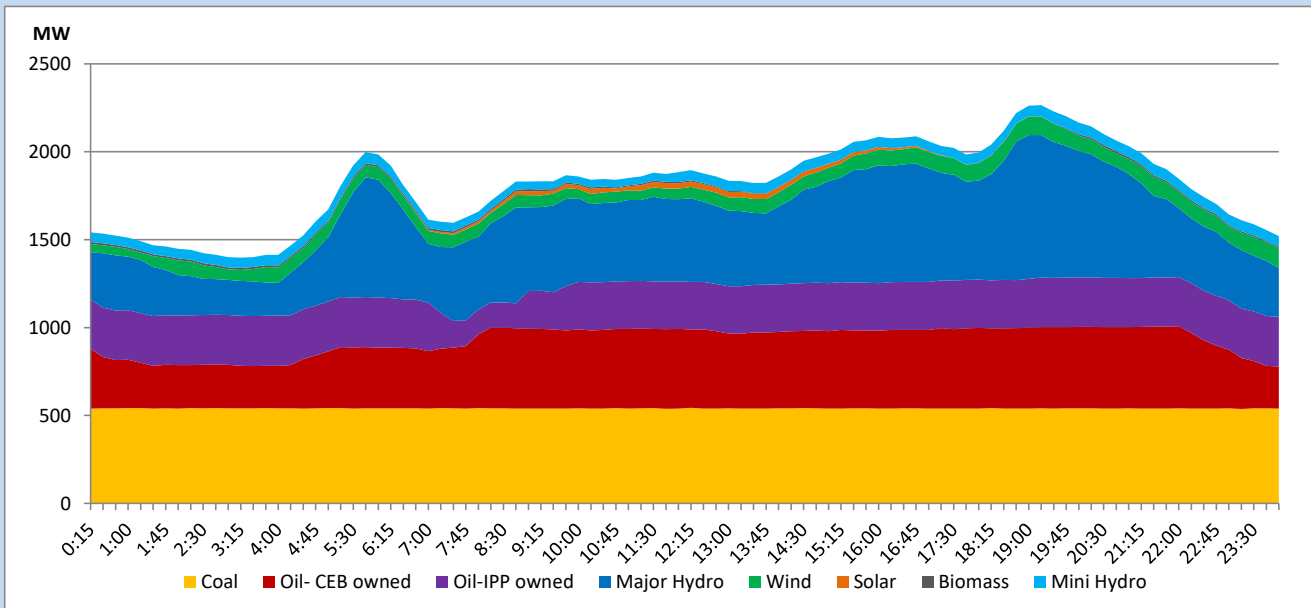


The above figures are excluding contribution from roof top solar, non telemetered solar and mini hydro plants

Daily Load Curve

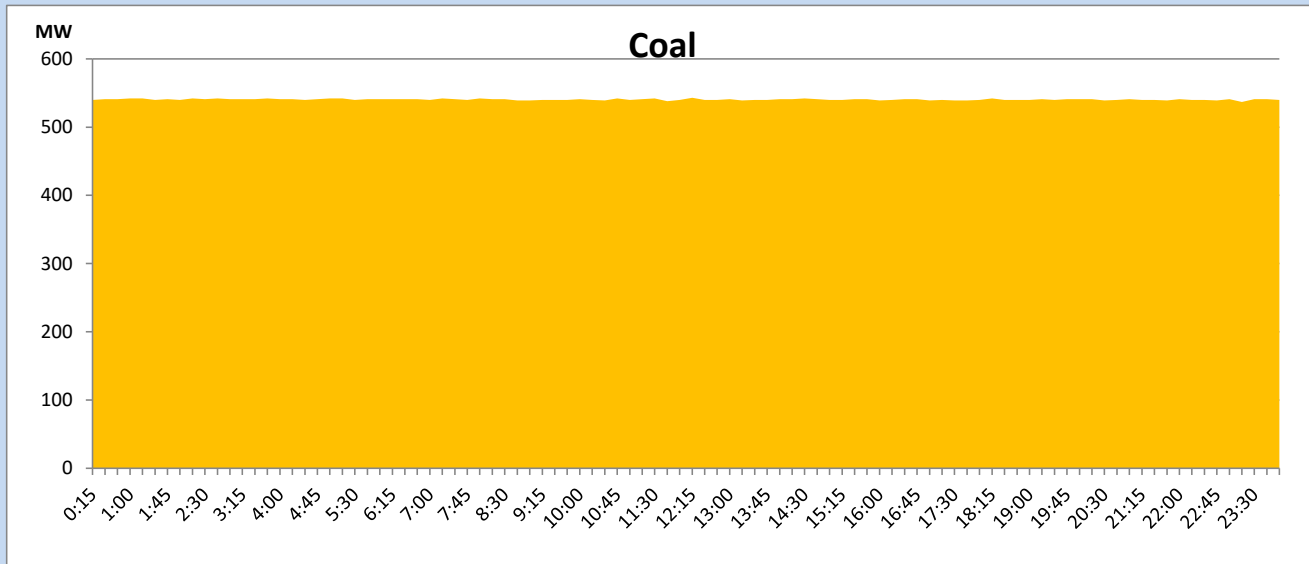
May 18, 2023

Solar and wind data is based on Telemetered Power Stations only



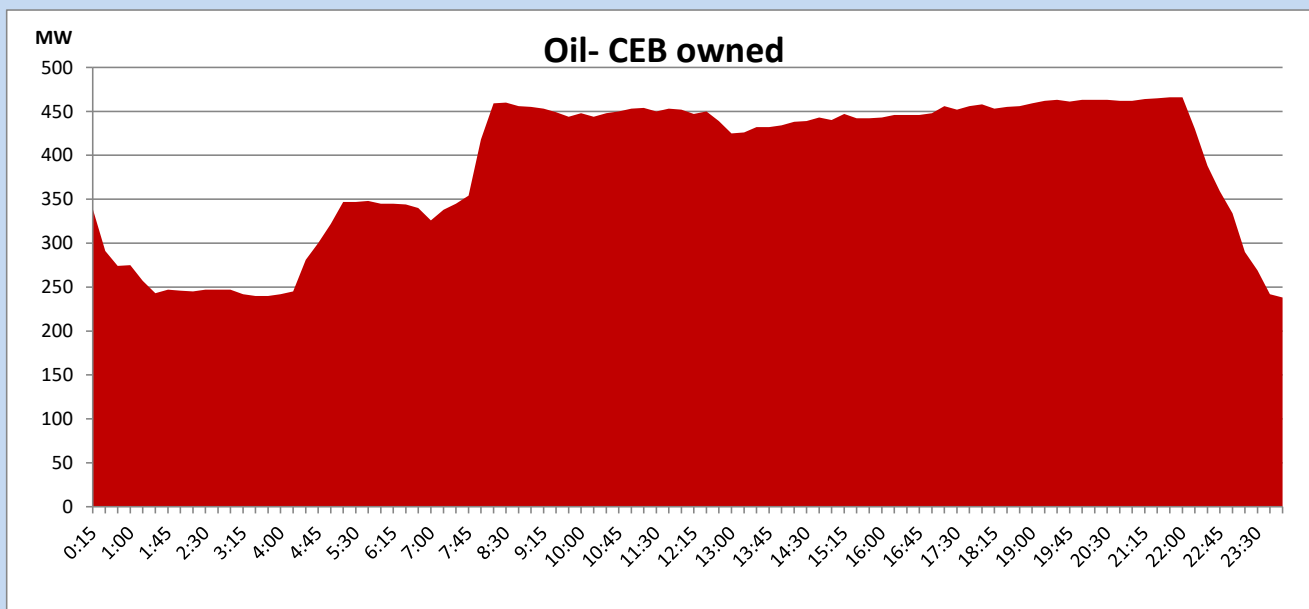
Coal Generation during

May 18, 2023



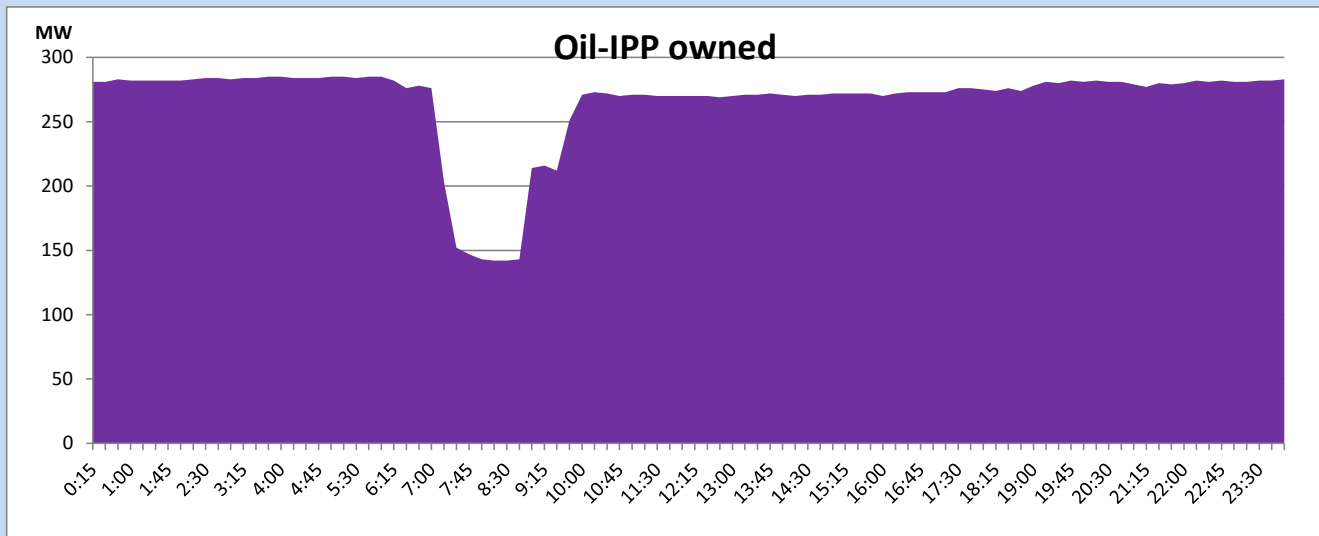
CEB Oil Plant Generation during

May 18, 2023



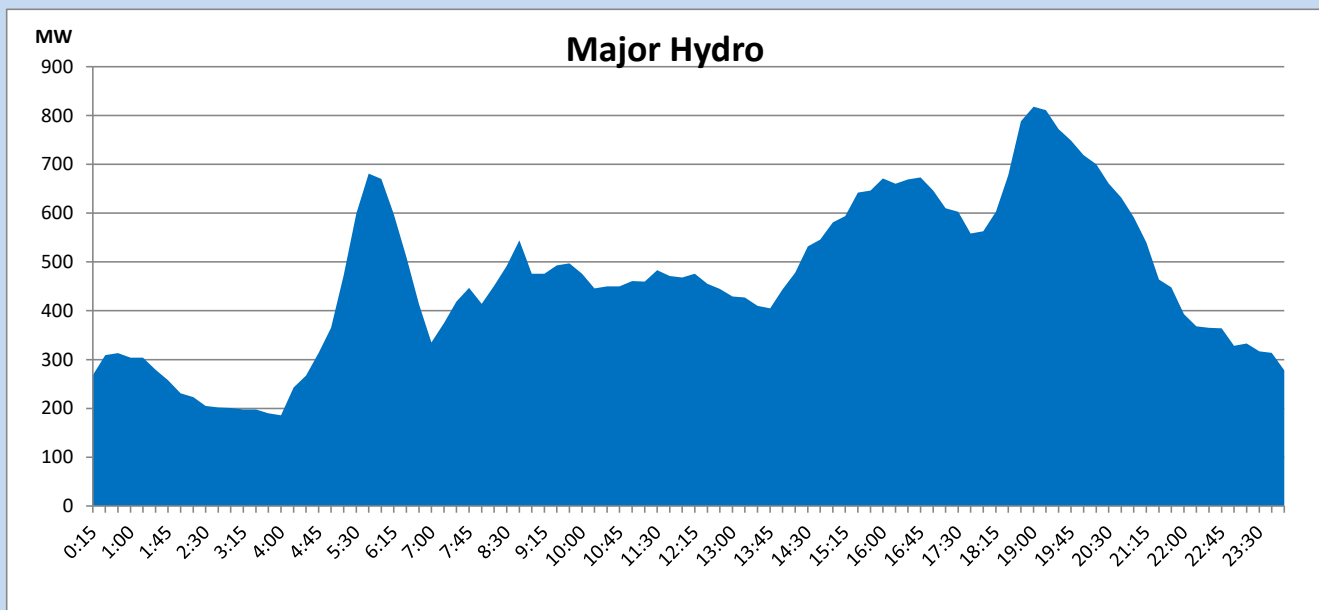
IPP Oil Plant Generation during

May 18, 2023



Major Hydro Generation during

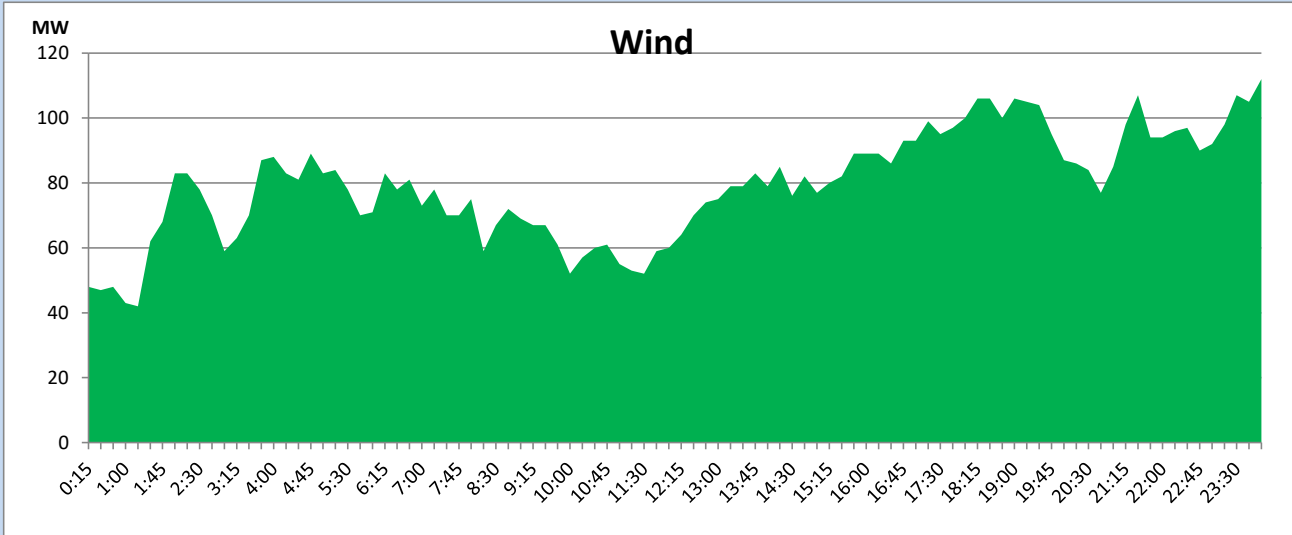
May 18, 2023



Wind Generation during

May 18, 2023

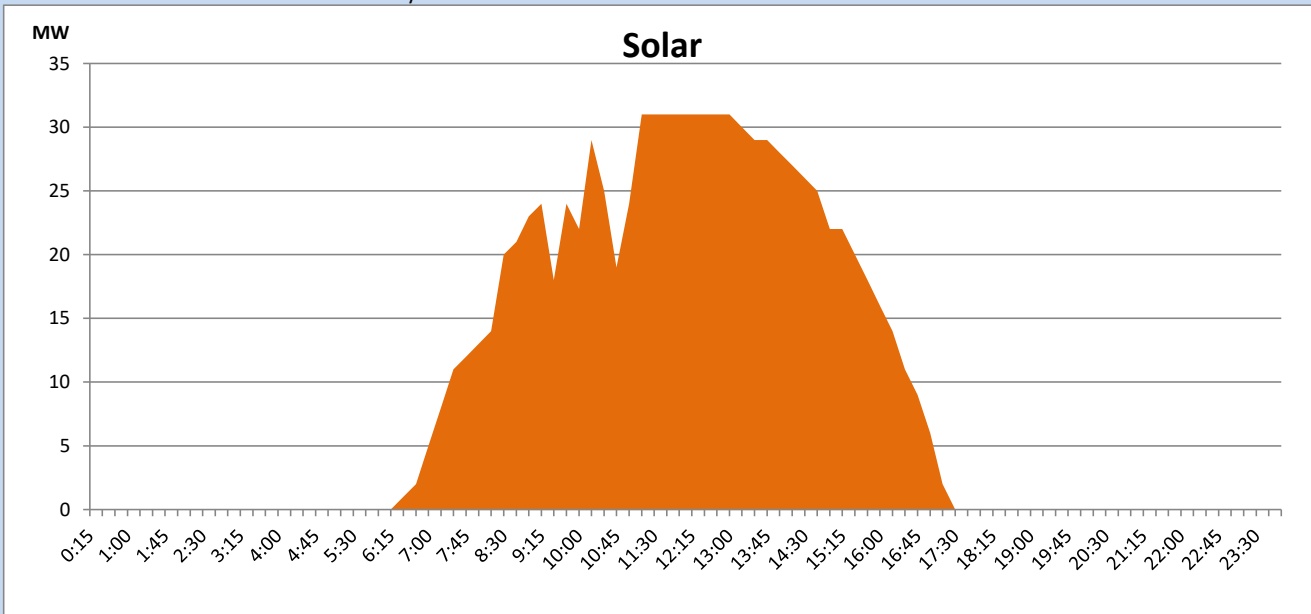
Based on Telemetered Power Stations only



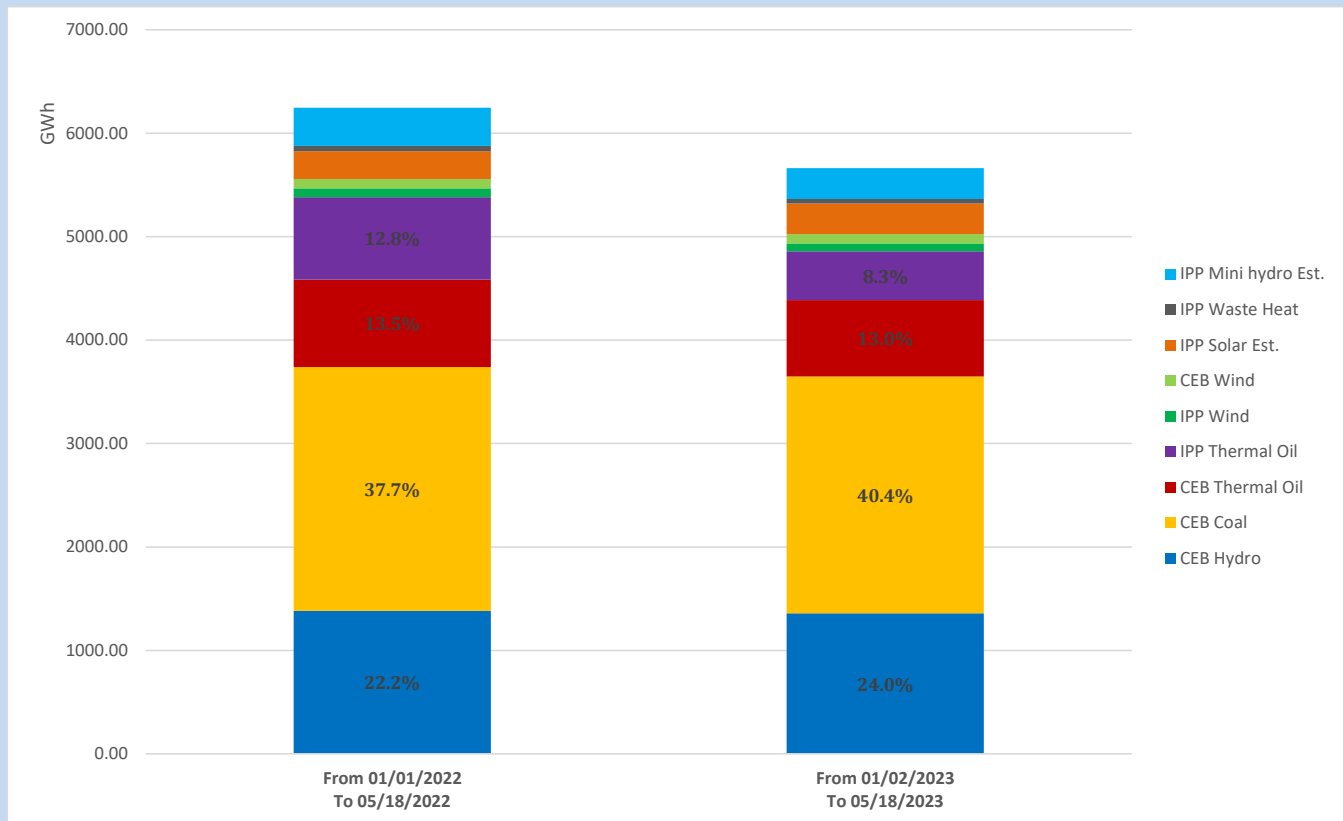
Solar Generation during

May 18, 2023

Based on Telemetered Power Stations only



Cumulative Dispatch Comparison with Last Year



The above figures are including contribution from roof top solar, non telemetered solar and mini hydro plants

Thermal Plant Fuel types

Power Station	Primary Fuel
CEB Thermal	
Sapugaskanda 1	Heavy Fuel
Sapugaskanda 2	Heavy Fuel
Kelanitissa Small Gas Turbines	Auto Diesel
GT 7 - Kelanitissa	Auto Diesel
Kelanitissa CCY	Naphtha or Diesel
Lakvijaya 1	Coal
Lakvijaya 2	Coal
Lakvijaya 3	Coal
Uthuru Janani	Heavy Fuel
Barge CEB	Heavy Fuel
KCCPS -2	Auto Diesel

Power Station	Primary Fuel
Private Thermal	
West Coast	Auto Diesel / Heavy Fuel

Major Incidents reported during the day

May 18, 2023

- 1) Badulla Rantabe 132kV cct 01 & 02 which were tripped on 17.05.23 was normalized at 12:46hrs.