

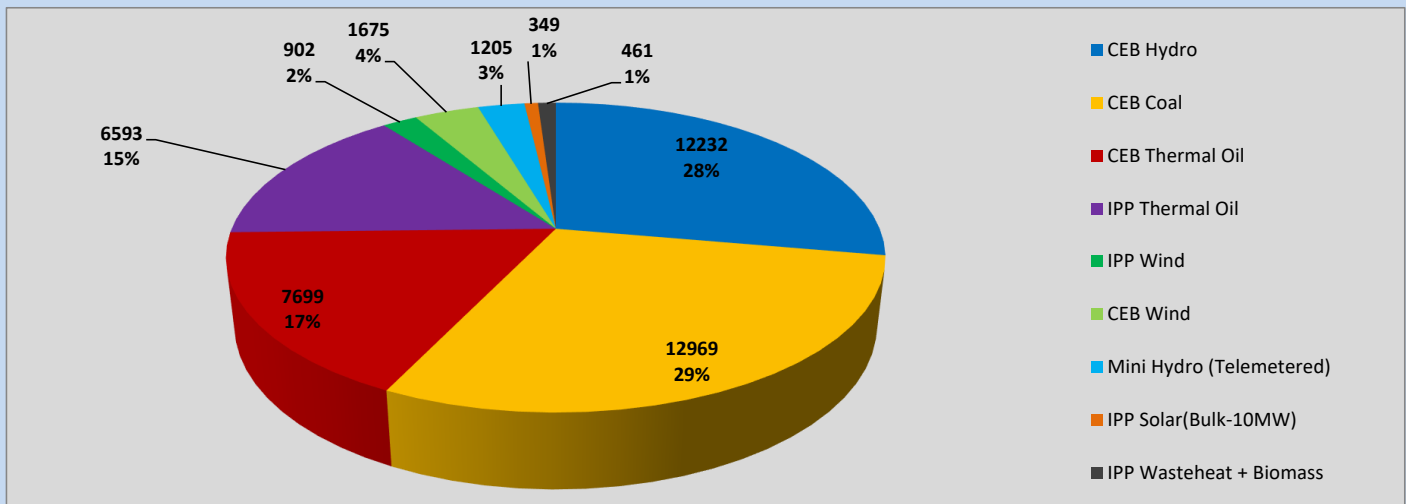
Generation and Reservoirs Statistics

May 17, 2023



PUBLIC UTILITIES COMMISSION OF SRI LANKA

Daily Generation Mix in MWh



Total Generation (Excluding estimated figures) =

44,085 MWh

Estimated figures of CEB generation report

Estimated unserved energy = 0.00 GWh
 Estimated Mini Hydro (Non telemetered) = 2785 MWh
 Estimated IPP Solar PV (Bulk 1-10MW) = 304 MWh
 Estimated Solar Roof Top PV = 1920 MWh

Cumulative Dispatch

Following data excludes the contribution from roof top solar, non telemetered solar and mini hydro plants

For Current Month

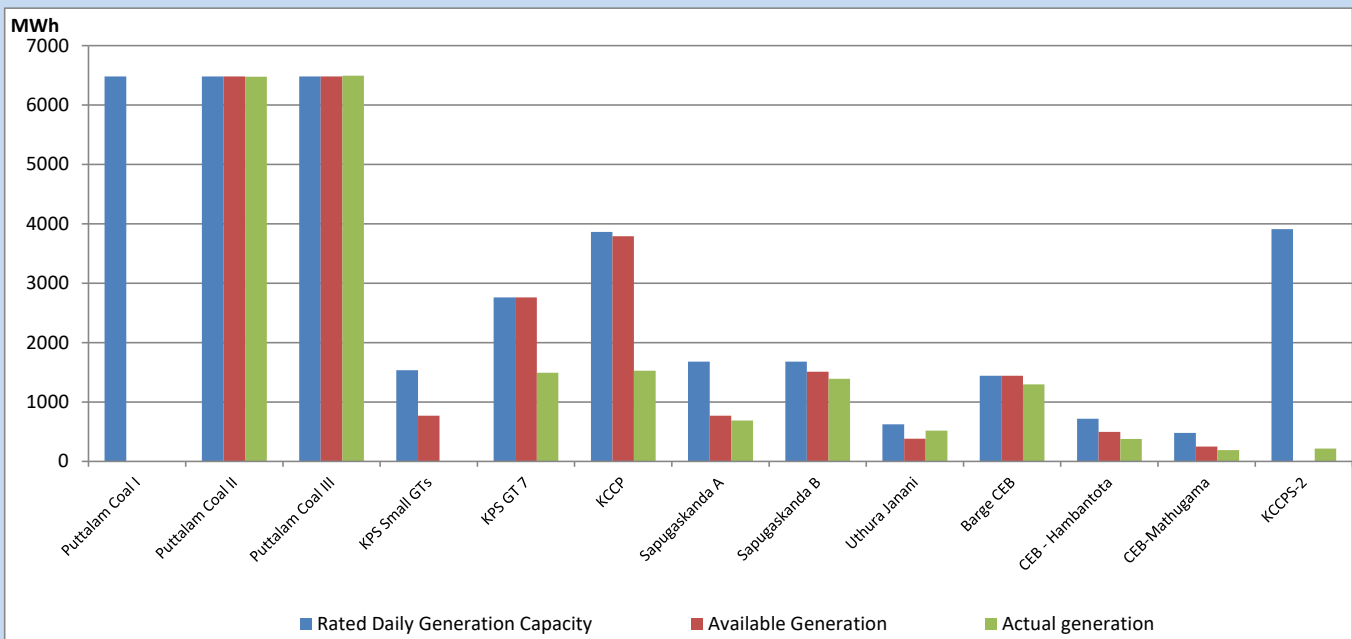
Category	Dispatch (GWh)	
CEB Hydro	148	23.64%
CEB Coal	292	46.68%
CEB Thermal Oil	75	11.96%
IPP Thermal	47	7.55%
SPP Wind	17	2.77%
CEB Wind	18	2.86%
Mini Hydro (Telemetered)	18	2.81%
IPP Solar (Bulk-10MW)	4	0.70%
IPP Wasteheat + BMP	6	1.01%
Total	626	

For Current Year

Category	Dispatch (GWh)	
CEB Hydro	1,350	26.05%
CEB Coal	2,279	44.00%
CEB Thermal Oil	730	14.09%
IPP Thermal	465	8.97%
SPP Wind	75	1.45%
CEB Wind	88	1.70%
Mini Hydro (Telemetered)	113	2.18%
IPP Solar (Bulk-10MW)	39	0.75%
IPP Wasteheat	41	0.79%
Total	5,180	

CEB owned Thermal Plant Dispatch

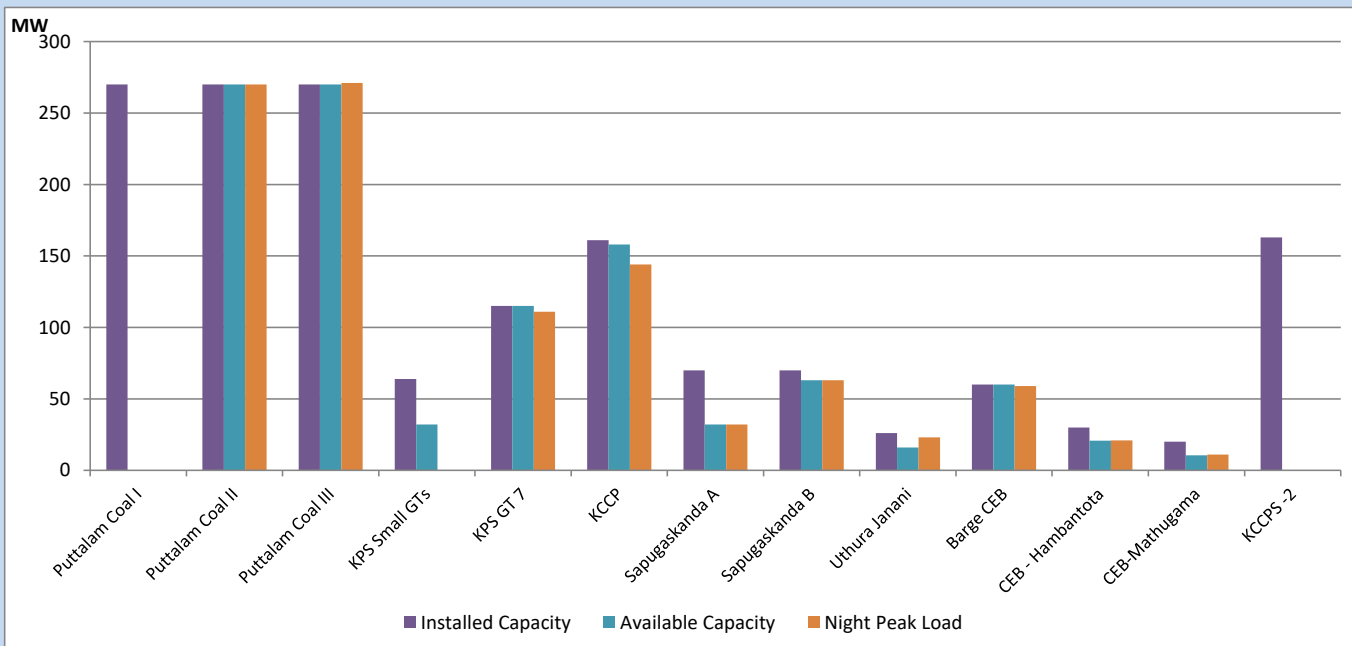
May 17, 2023



Available Generation is estimated based on plant availability at 6.00am on

May 18, 2023

CEB owned Thermal Plant Loading at the Night Peak



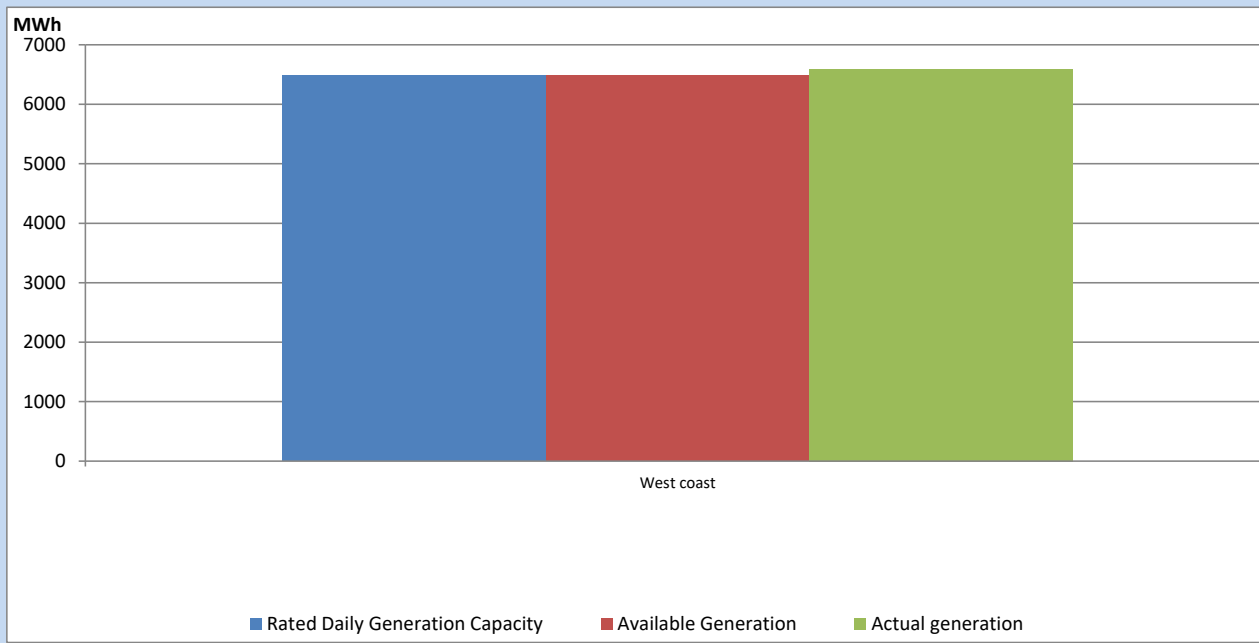
Note-

Plant availability is recorded at 6.00 am on

May 18, 2023

IPP owned Thermal Plant Dispatch

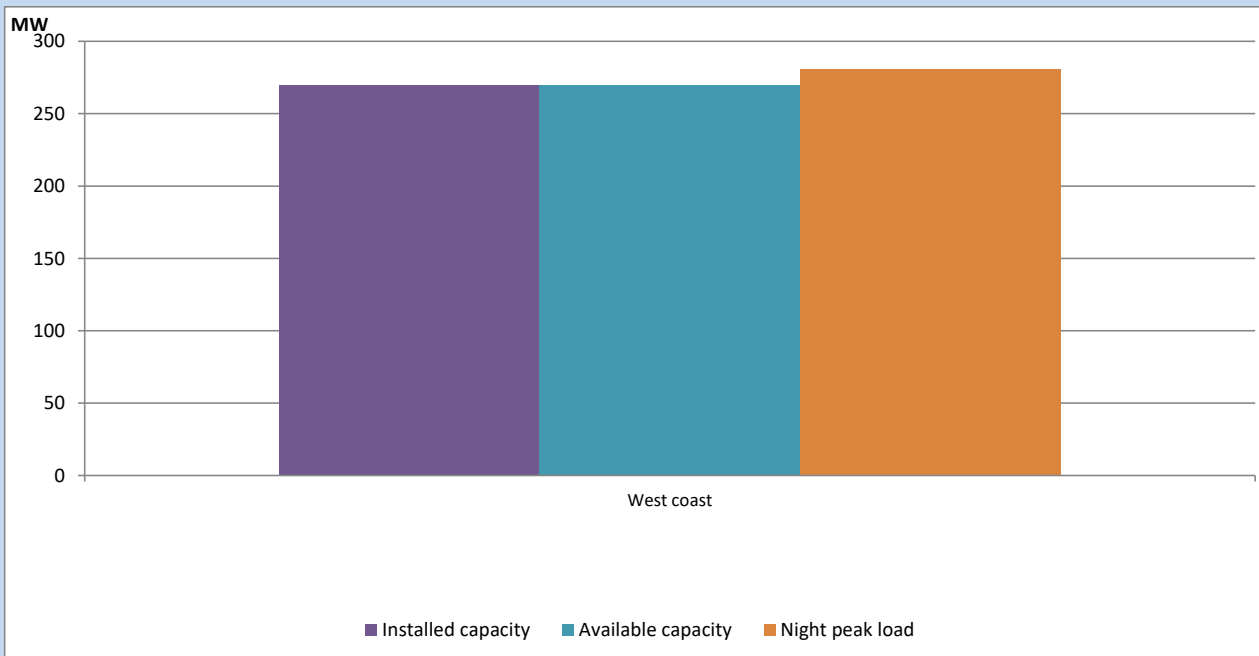
May 17, 2023



Available Generation is estimated based on plant availability at 6.00am on

May 18, 2023

IPP owned Thermal Plant Loading at the Night Peak

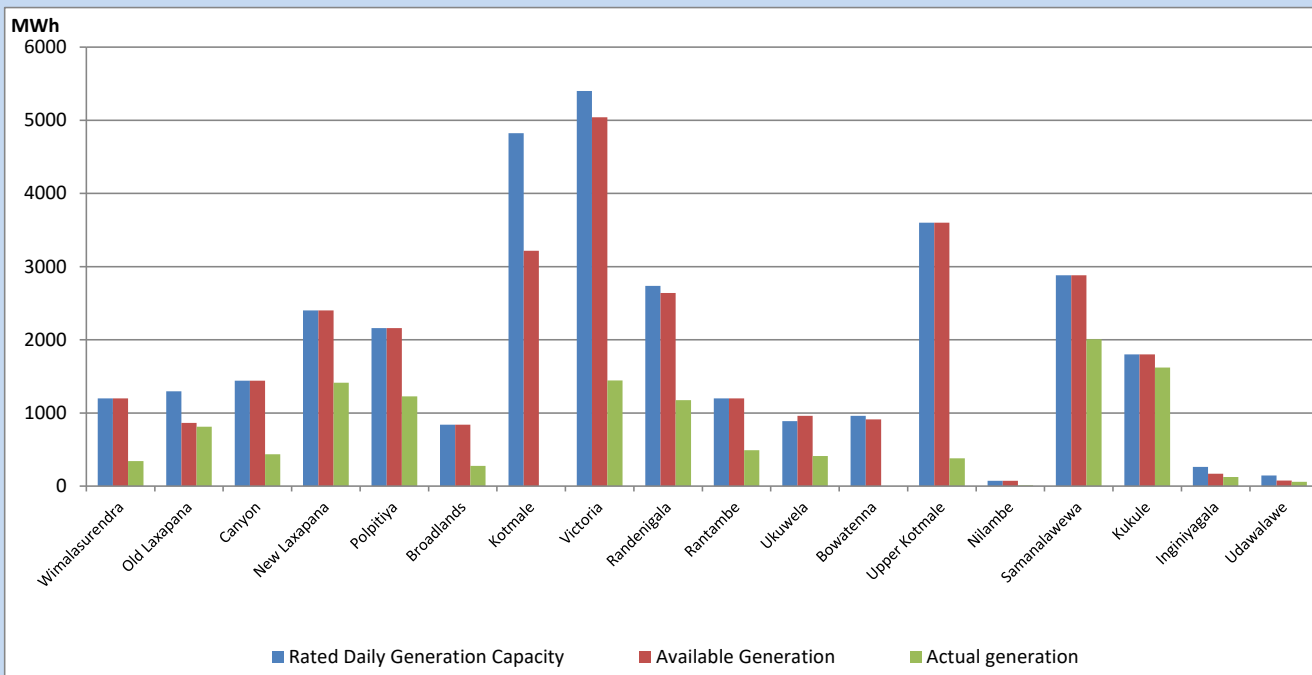


Note- Plant availability is recorded at 6.00 am on

May 18, 2023

Major Hydro Plant Dispatch

May 17, 2023

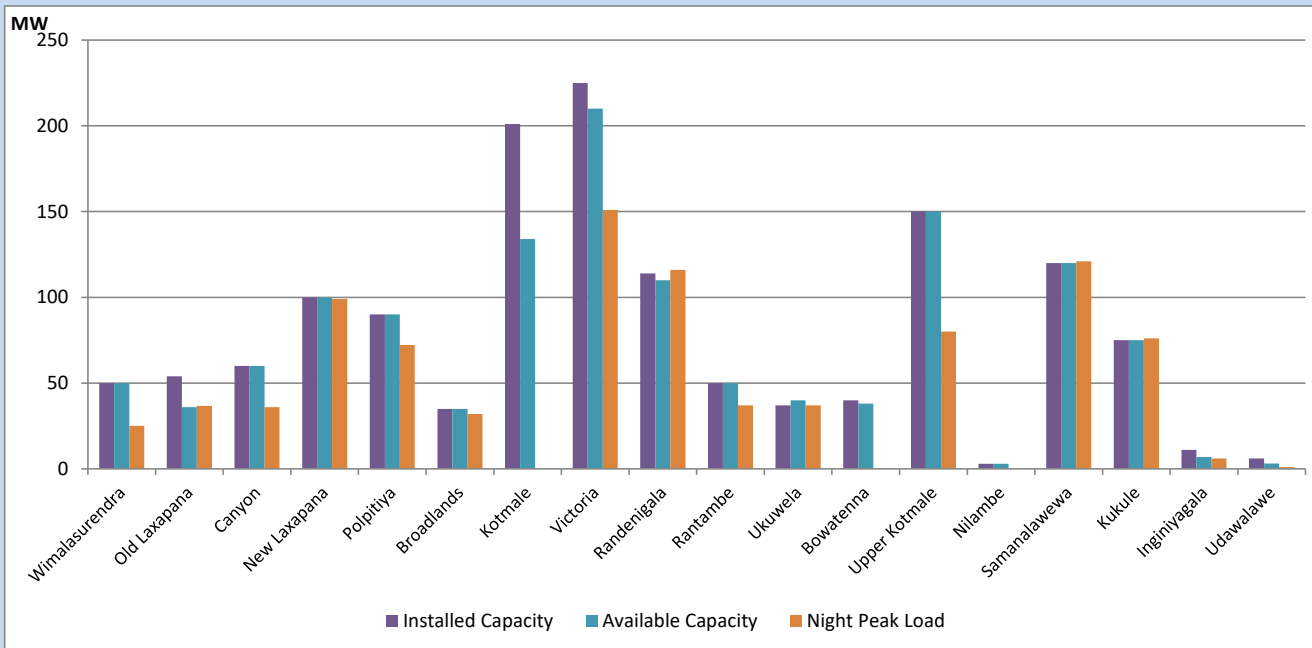


Available Generation is estimated based on plant availability at 6.00am on
Broadlands power plant is operating in the Commissioning Stage

May 18, 2023

Major Hydro Plant Loading at Night Peak

May 17, 2023



Note- Plant availability is recorded at 6.00 am on
Broadlands power plant is operating in the Commissioning Stage

May 18, 2023

Summary of Major Plant performance

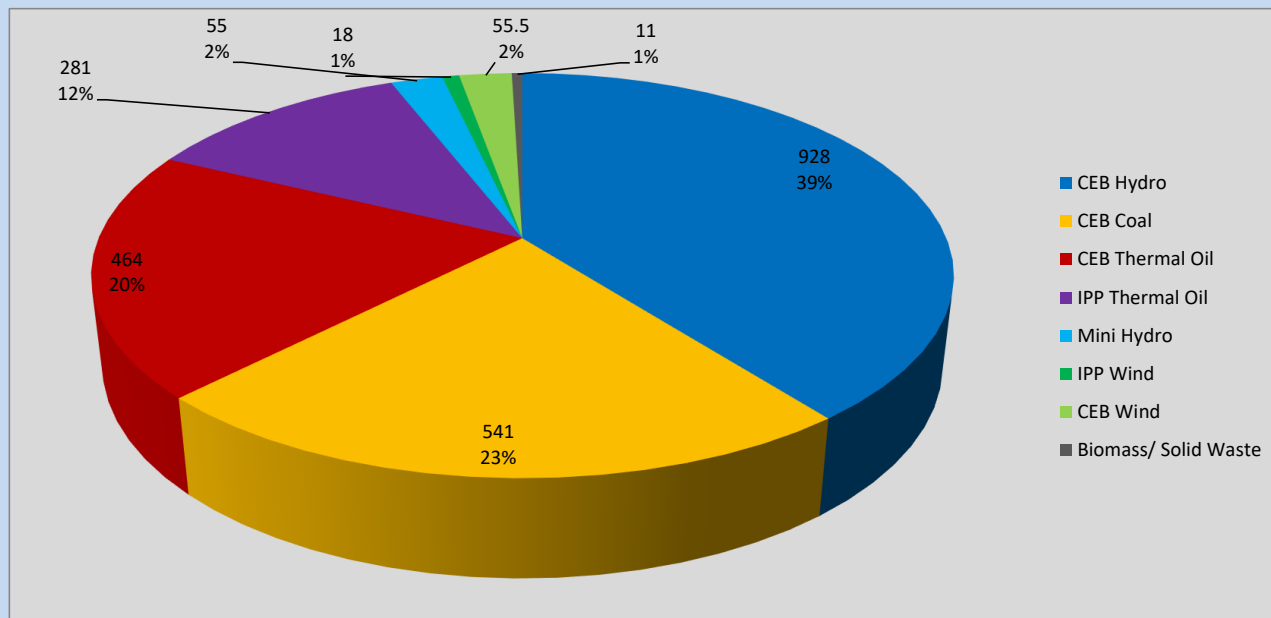
Plant	Installed Capacity	Plant Availability	Night peak Load	Plant Dispatch
	(MW)	(MW)	(MW)	(MWh)
Wimalasurendra	50	50	25	343
Old Laxapana	54	36	37	812
Canyon	60	60	36	435
New Laxapana	100	100	99	1,414
Polpitiya	90	90	72	1,225
Broadlands	35	35	32	278
Kotmale	201	134	0	0
Victoria	225	210	151	1,444
Randenigala	114	110	116	1,173
Rantambe	50	50	37	491
Ukuwela	37	40	37	410
Bowatenna	40	38	0	0
Upper Kotmale	150	150	80	381
Nilambe	3	3	0	10
Samanalawewa	120	120	121	2,009
Kukule	75	75	76	1,621
Inginiyagala	11	7	6	126
Udawalawe	6	3	1	60
Puttalam Coal I	270	0	0	0
Puttalam Coal II	270	270	270	6,476
Puttalam Coal III	270	270	271	6,493
KPS Small GTs	64	32	0	0
KPS GT 7	115	115	111	1,495
KCCP	161	158	144	1,525
Sapugaskanda A	70	32	32	689
Sapugaskanda B	70	63	63	1,389
Uthura Janani	26	16	23	517
Barge CEB	60	60	59	1,297
CEB-Hambantota	30	21	21	380
CEB-Mathugama	20	11	11	190
ACE Matara	24	0	0	0
Asia Power	50	0	0	0
KCCPS -2	163	0	0	217
West Coast	270	270	281	6,593
Nothern Power	36	0	0	0
ACE Embilipitiya	93	0	0	0
Total	3,483	2,628	2,351	44,085

Plant availability is the availability recorded at 6 am on

May 18, 2023

Contribution to the Night Peak in MW

May 17, 2023

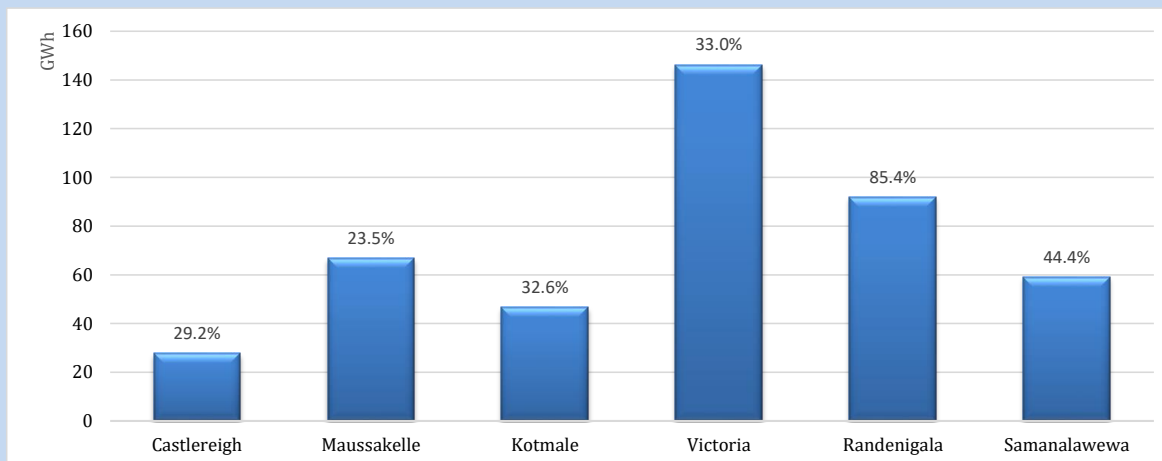


Night Peak*	2,353 MW
Day Peak	2,105 MW
Minimum Demand	1,814 MW

Above figures are excluding contribution from roof top solar, non telemetered solar and mini hydro plants

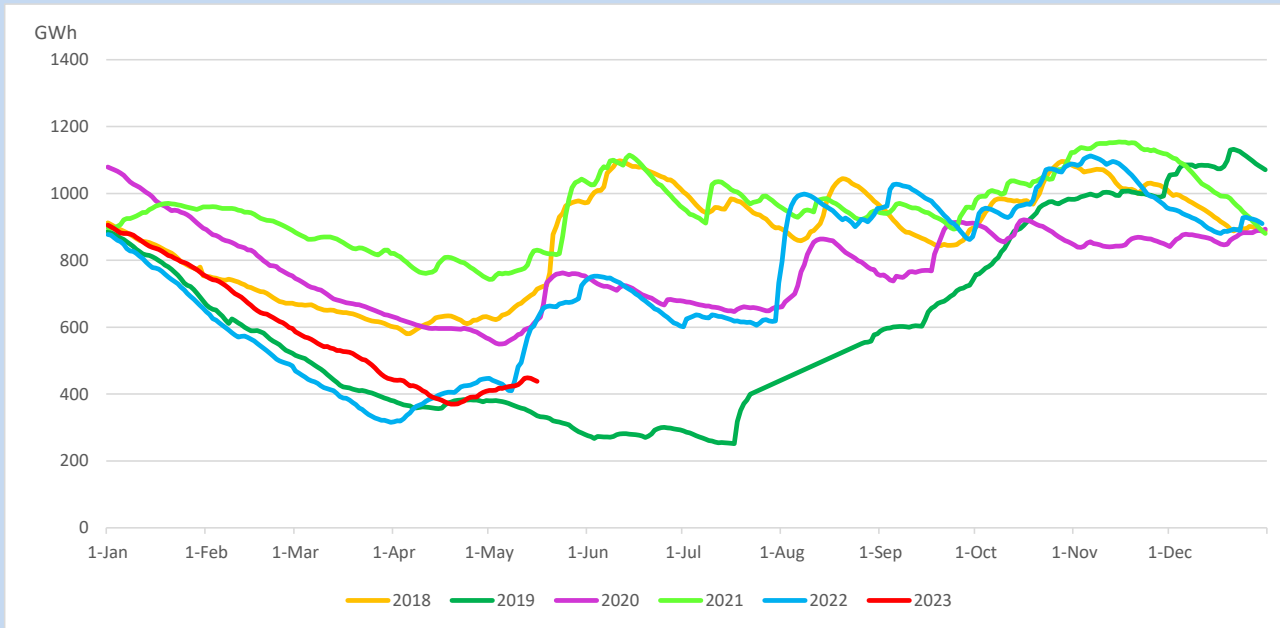
Reservoir Levels -

as at 06.00 Hr on May 18, 2023

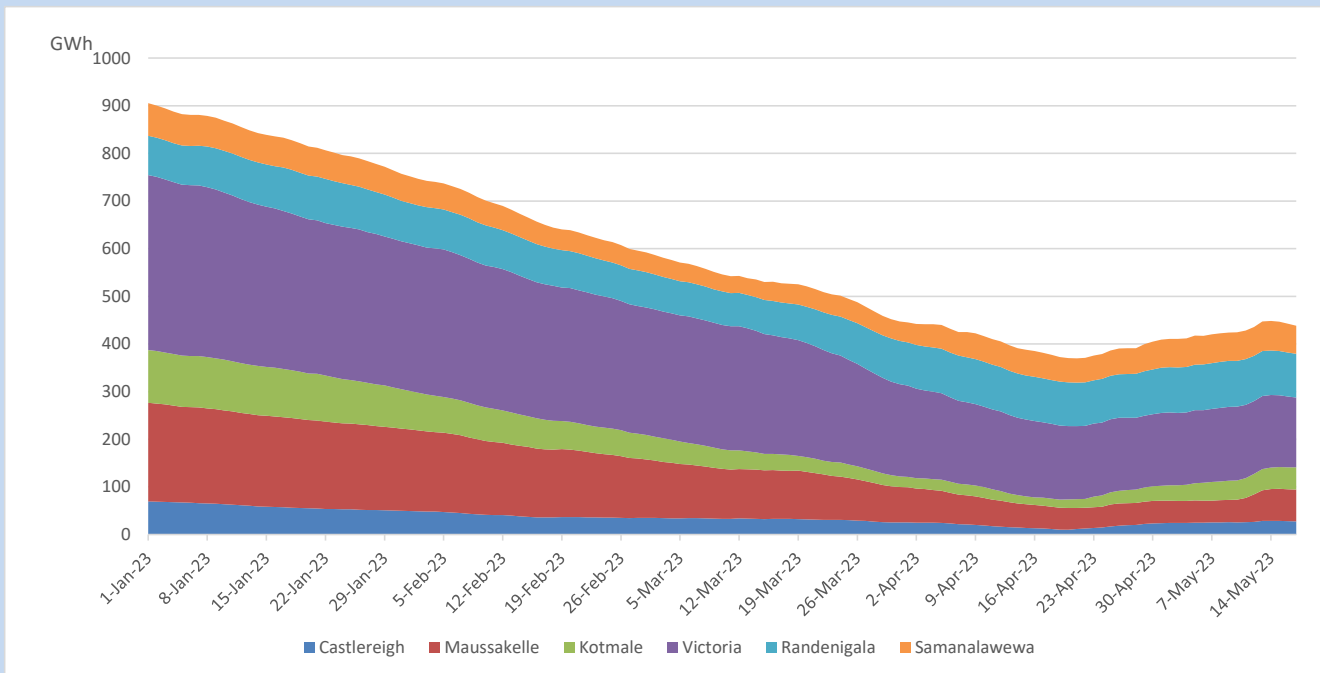


Total Reservoir Level	438.3 GWh
% of Total capacity	36.3%

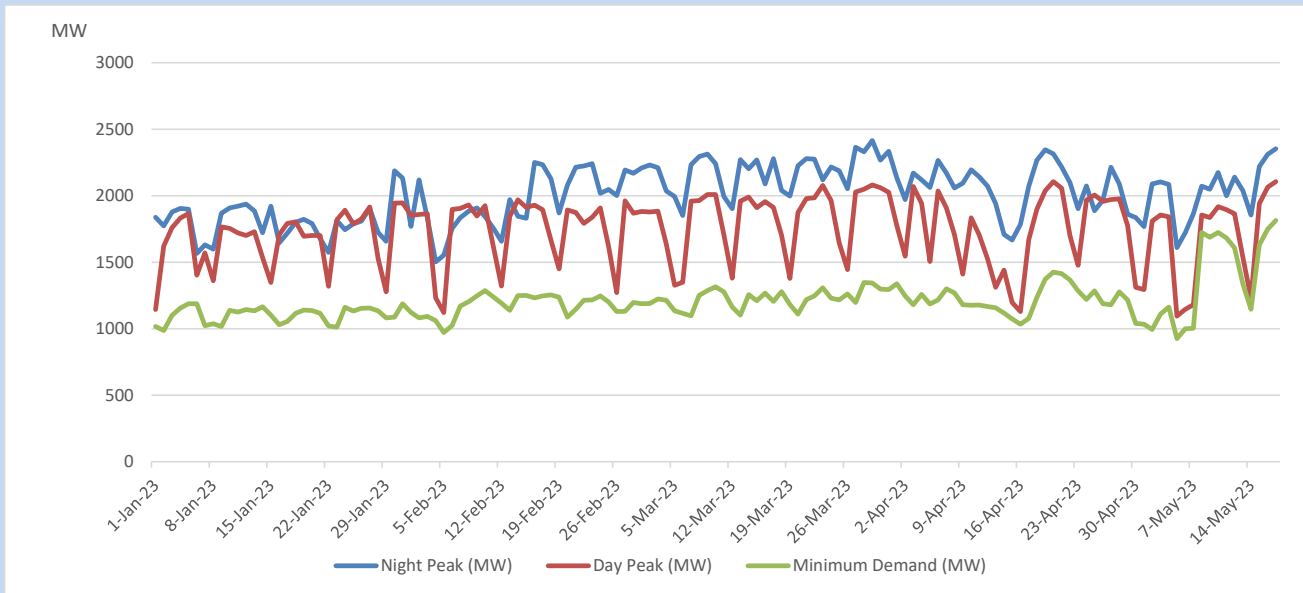
Comparison of Total Reservoir Storage Levels with Past Years



Variation of Major Hydro Reservoir Levels in the current year (GWh)



Variation of Demand during the current year

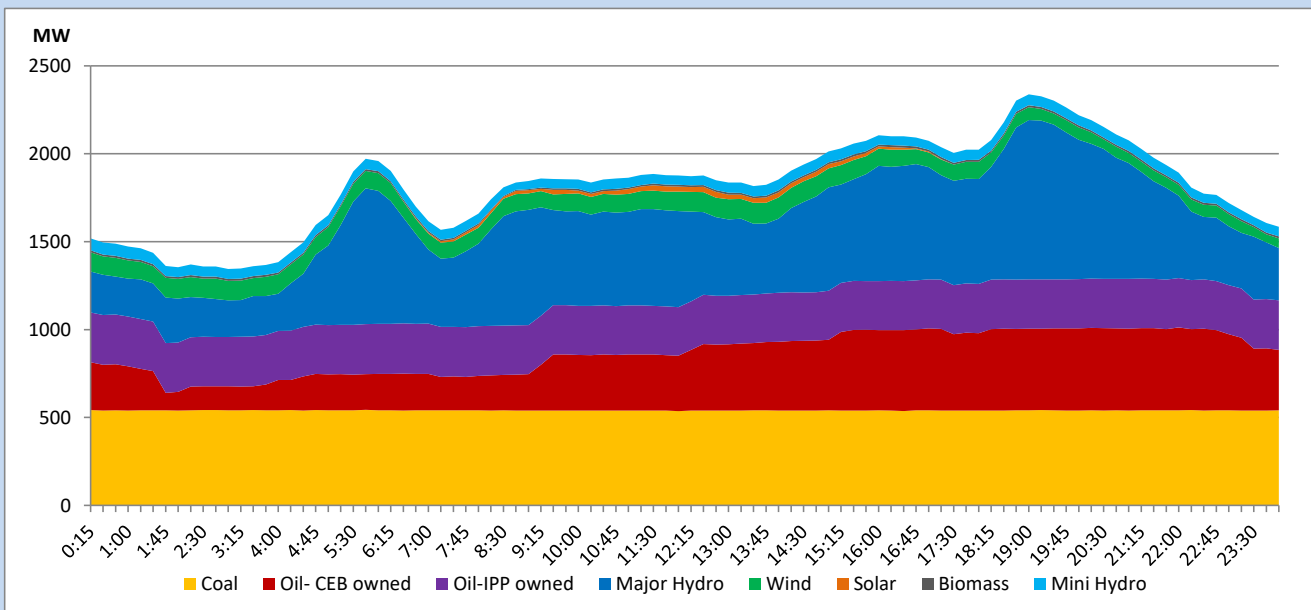


The above figures are excluding contribution from roof top solar, non telemetered solar and mini hydro plants

Daily Load Curve

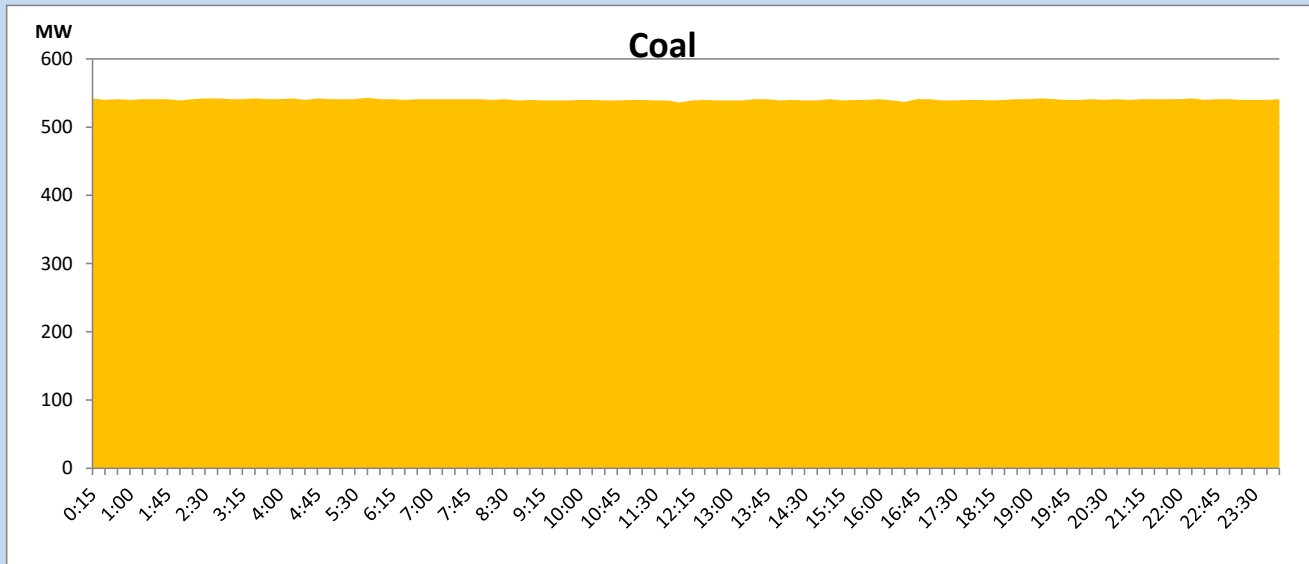
May 17, 2023

Solar and wind data is based on Telemetered Power Stations only



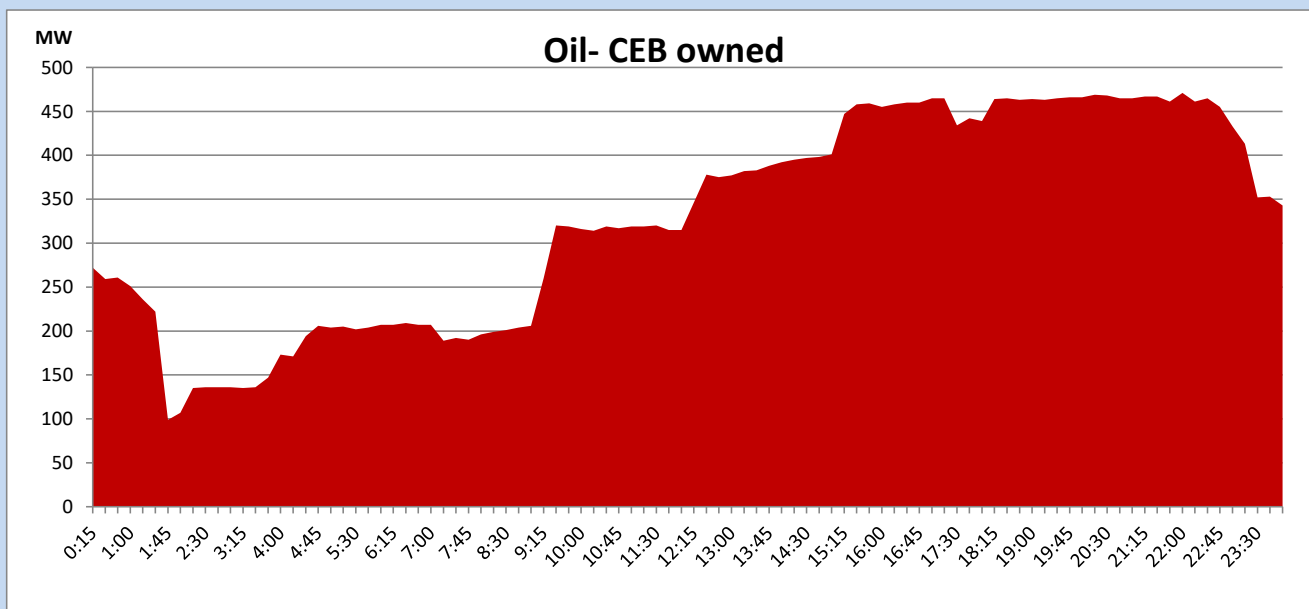
Coal Generation during

May 17, 2023



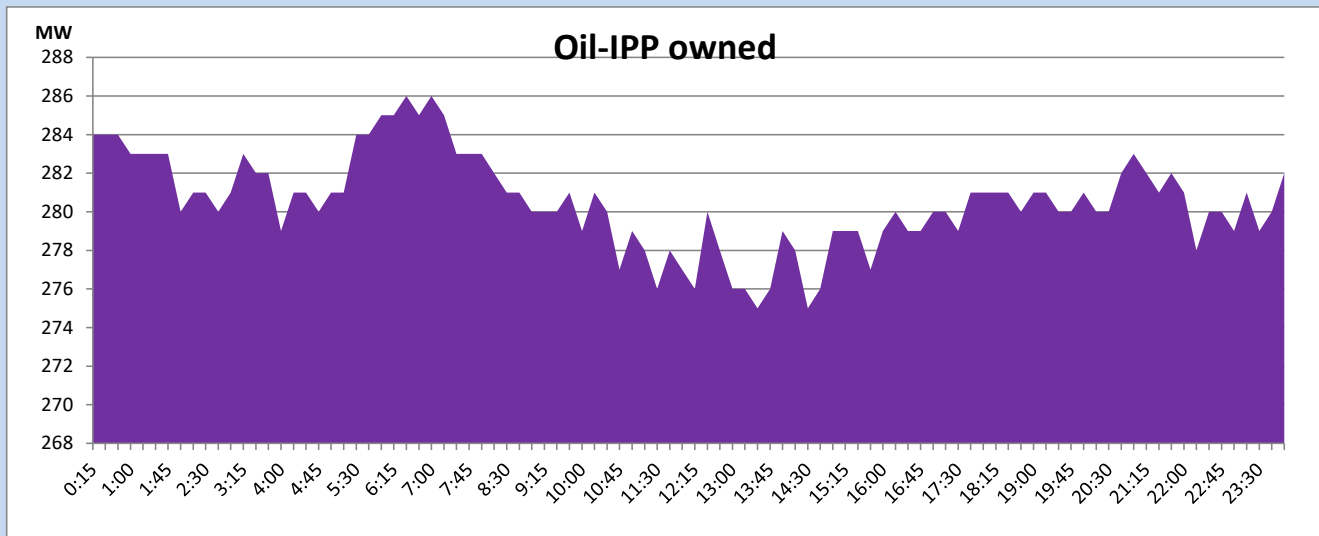
CEB Oil Plant Generation during

May 17, 2023



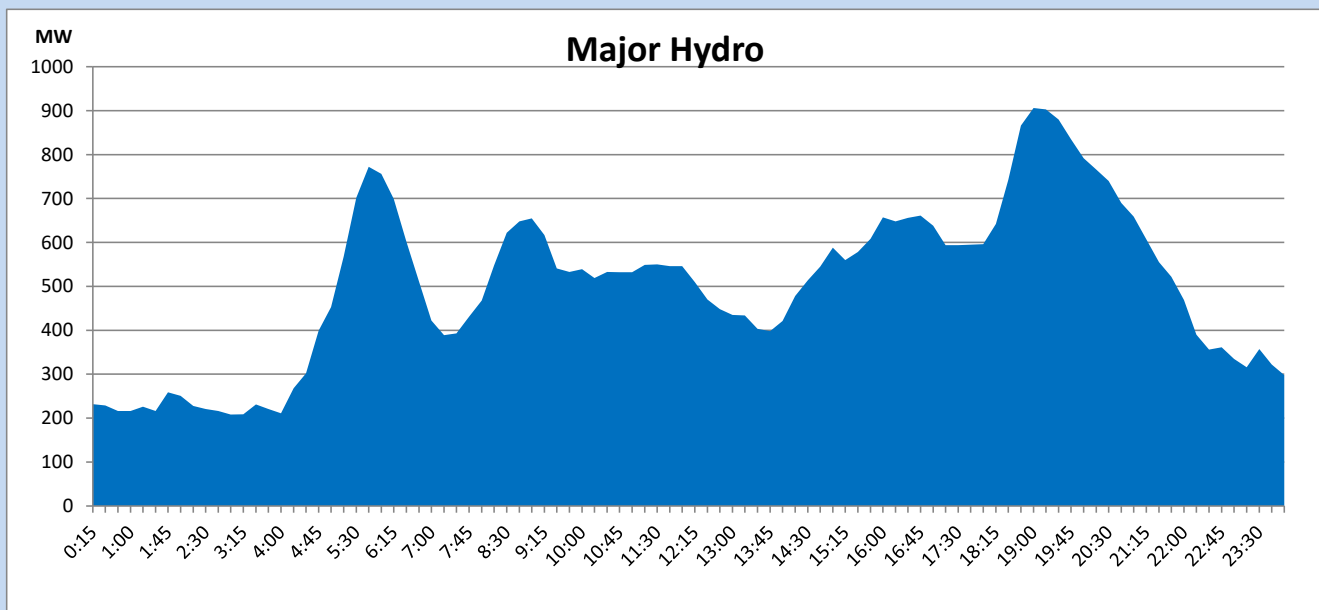
IPP Oil Plant Generation during

May 17, 2023



Major Hydro Generation during

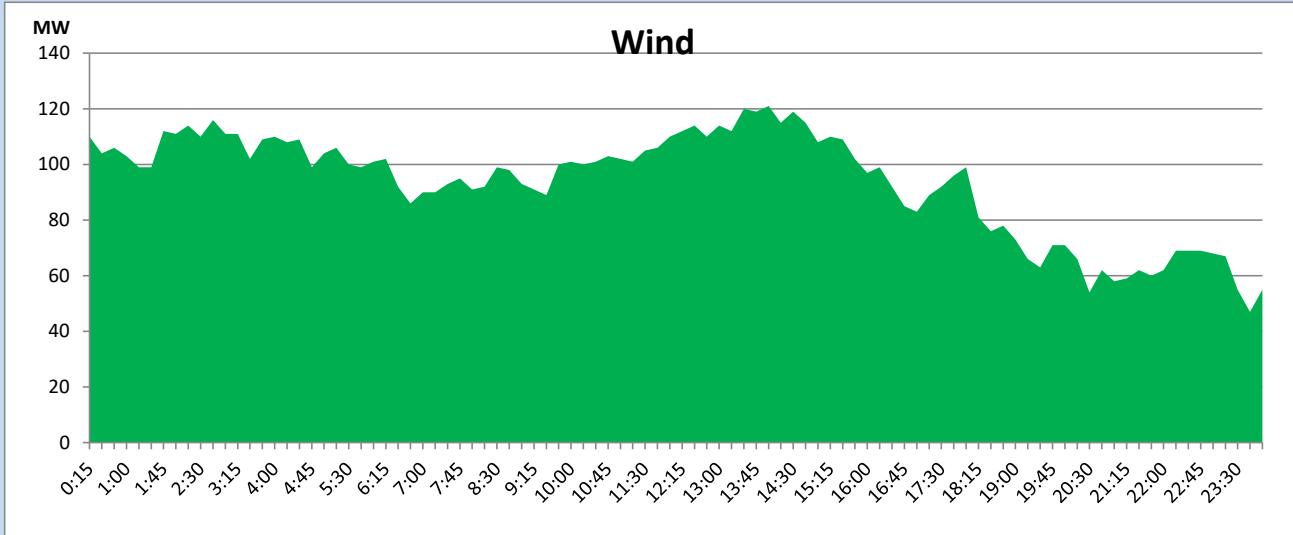
May 17, 2023



Wind Generation during

May 17, 2023

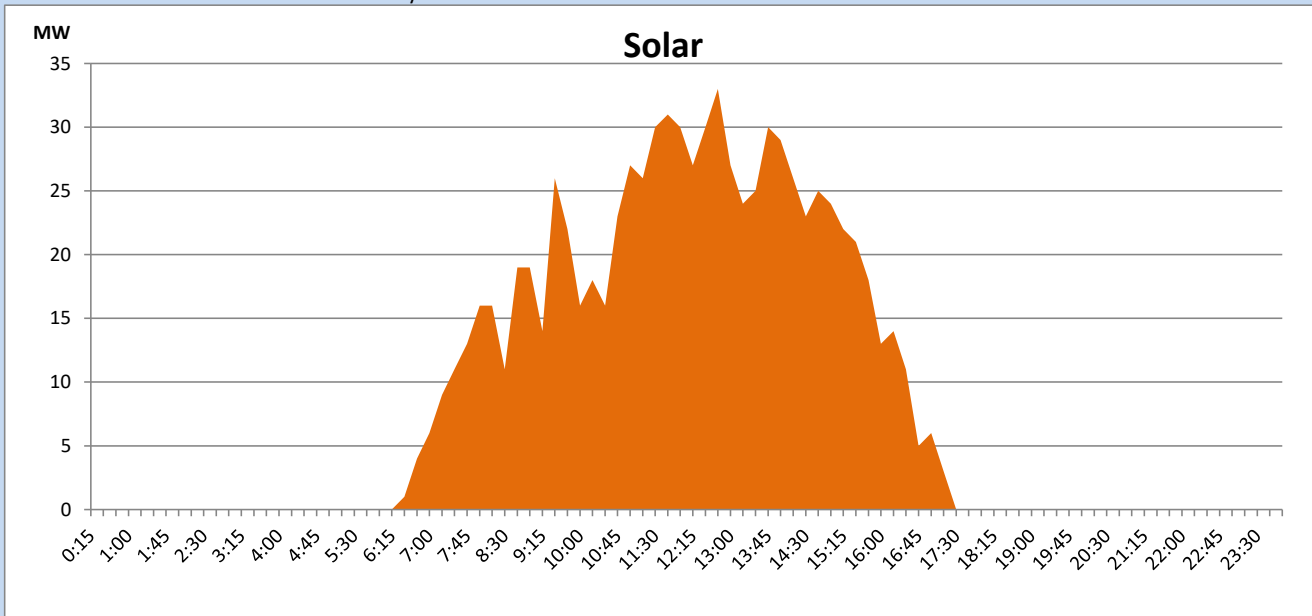
Based on Telemetered Power Stations only



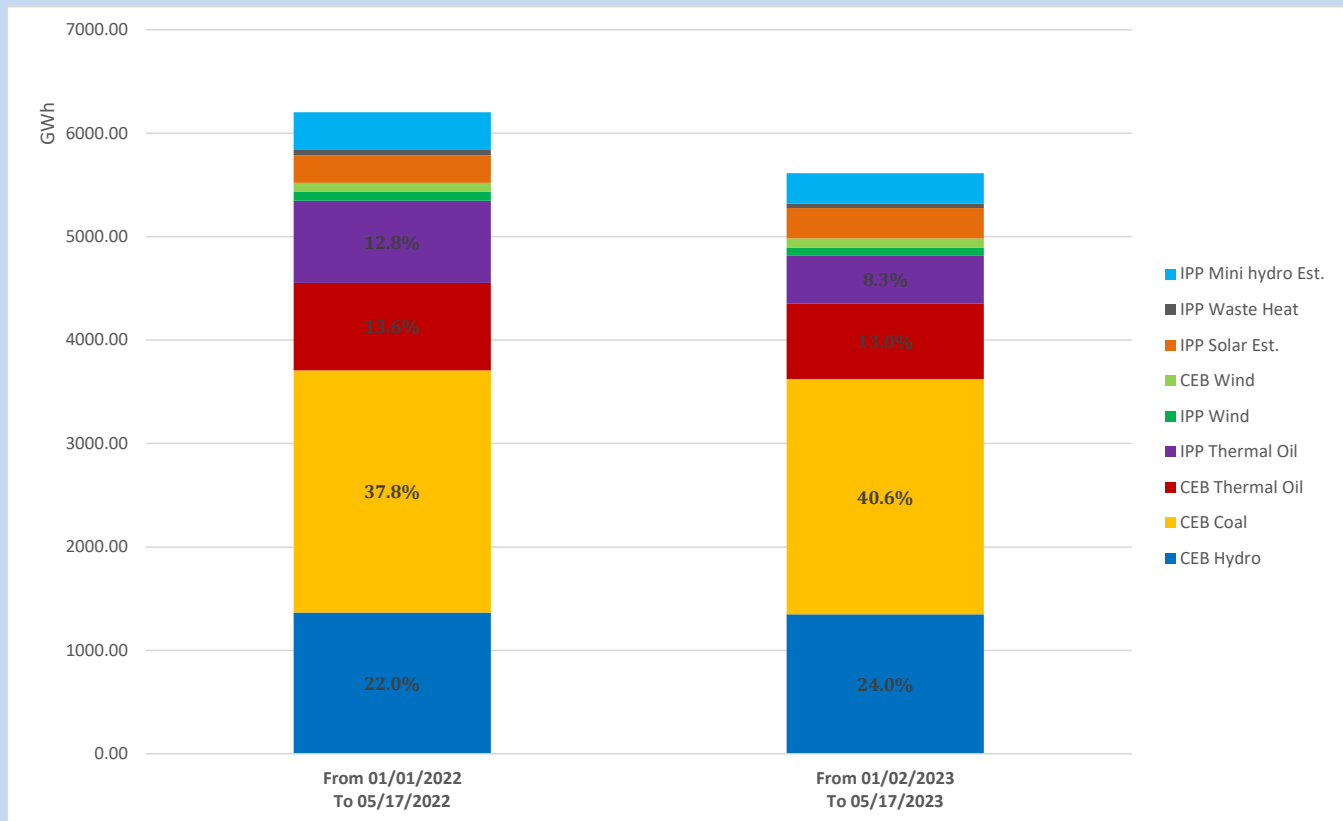
Solar Generation during

May 17, 2023

Based on Telemetered Power Stations only



Cumulative Dispatch Comparison with Last Year



The above figures are including contribution from roof top solar, non telemetered solar and mini hydro plants

Thermal Plant Fuel types

Power Station	Primary Fuel
CEB Thermal	
Sapugaskanda 1	Heavy Fuel
Sapugaskanda 2	Heavy Fuel
Kelanitissa Small Gas Turbines	Auto Diesel
GT 7 - Kelanitissa	Auto Diesel
Kelanitissa CCY	Naphtha or Diesel
Lakvijaya 1	Coal
Lakvijaya 2	Coal
Lakvijaya 3	Coal
Uthuru Janani	Heavy Fuel
Barge CEB	Heavy Fuel
KCCPS -2	Auto Diesel

Power Station	Primary Fuel
Private Thermal	
West Coast	Auto Diesel / Heavy Fuel

Major Incidents reported during the day

May 17, 2023

- 1) Barge Gen 04 tripped at 07:11hrs rejecting 15MW from the system due to the operation of Turbo charger speed high alarm. Power Barge Gen 04 resumed generation at 07:54hrs.
- 2) Old Habarana - Naula 132kV cct tripped and A/R from both ends at 13:11hrs due to the operation of distance protection.
- 3) Biyagama - Sapugaskanda GSS cct 01 tripped from both ends at 17:23hrs due to the operation of DEF protection. At the same time, Biyagama - Sapugaskanda GSS cct 02 tripped and A/R from both ends due to the operation of DEF protection. Biyagama - Sapu GSS cct 01 was normalized at 17:50hrs.
- 4) Badulla - Rantambe 132kV cct 01 and 02 tripped from both ends and A/R only from Rantambe end at 22:10hrs due to the operation of the distance protection causing Badulla GSS and Nuwaraeliya GSS to be dead. Nuwaraeliya GSS and Badulla GSS were normalized at 22:16hrs and 22:43hrs respectively via Old Laxapana cct 01 and 02. Badulla - Rantambe 132kV cct 01 and 02 are yet to be restored.
- 5) Uthuru Janani DG 03 tripped at 03:30hrs (18.05.2023) rejecting 4MW from the system due to the operation of reverse power. Uthuru Janani DG 03 is yet to be resumed generation.