

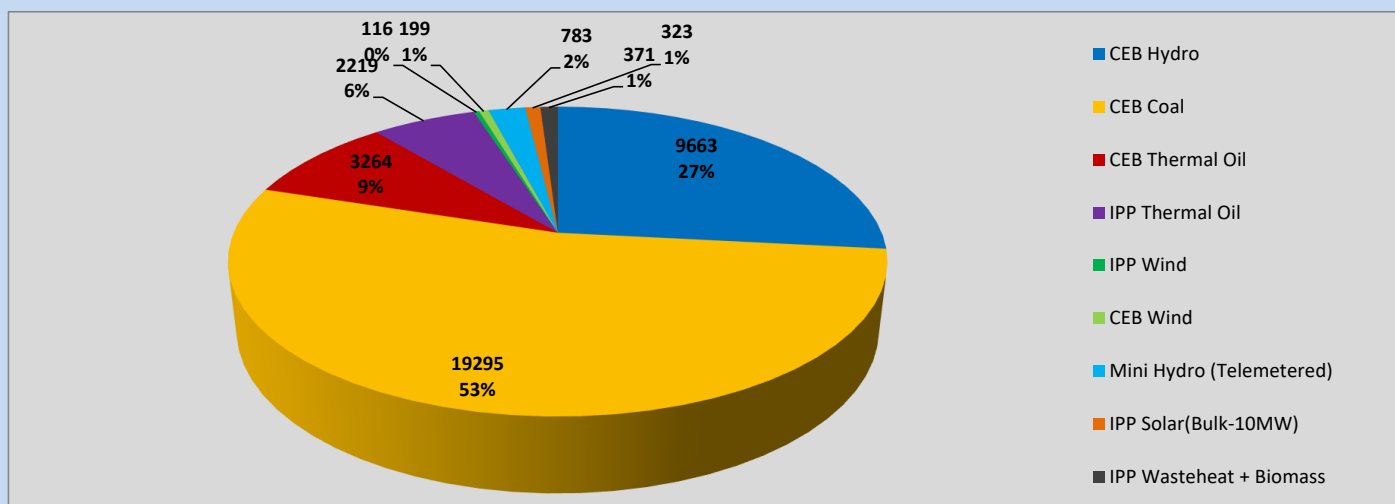
Generation and Reservoirs Statistics

April 17, 2023



PUBLIC UTILITIES COMMISSION OF SRI LANKA

Daily Generation Mix in MWh



Total Generation (Excluding estimated figures) =

36,233 MWh

Estimated figures of CEB generation report

Estimated unserved energy = 0.00 GWh

Estimated Mini Hydro (Non telemetered) = 1597 MWh

Estimated IPP Solar PV (Bulk 1-10MW) = 304 MWh

Estimated Solar Roof Top PV = 1640 MWh

Cumulative Dispatch

Following data excludes the contribution from roof top solar, non telemetered solar and mini hydro plants

For Current Month

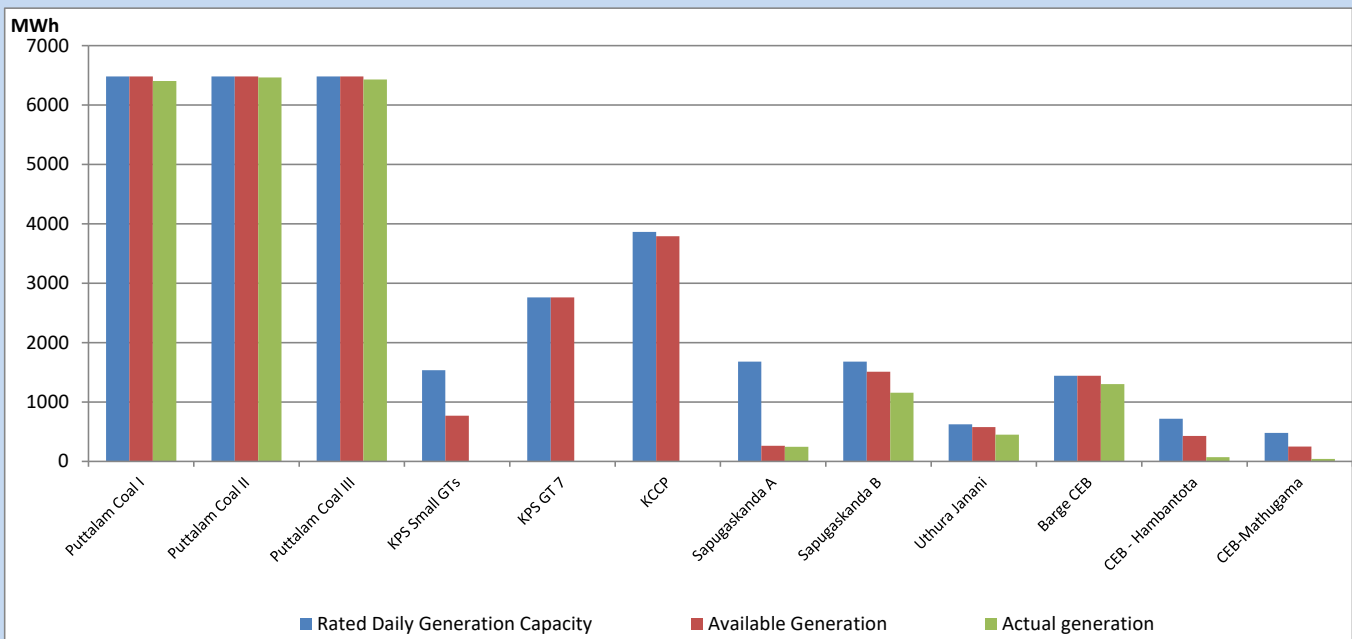
Category	Dispatch (GWh)	
CEB Hydro	191	30.86%
CEB Coal	214	34.51%
CEB Thermal Oil	94	15.20%
IPP Thermal	85	13.72%
SPP Wind	4	0.65%
CEB Wind	5	0.87%
Mini Hydro (Telemetered)	15	2.46%
IPP Solar(Bulk-10MW)	6	0.91%
IPP Wasteheat + BMP	5	0.83%
Total	619	

For Current Year

Category	Dispatch (GWh)	
CEB Hydro	1,112	27.56%
CEB Coal	1,736	43.03%
CEB Thermal Oil	564	13.98%
IPP Thermal	355	8.80%
SPP Wind	55	1.36%
CEB Wind	66	1.63%
Mini Hydro (Telemetered)	84	2.08%
IPP Solar(Bulk-10MW)	31	0.78%
IPP Wasteheat	31	0.78%
Total	4,035	

CEB owned Thermal Plant Dispatch

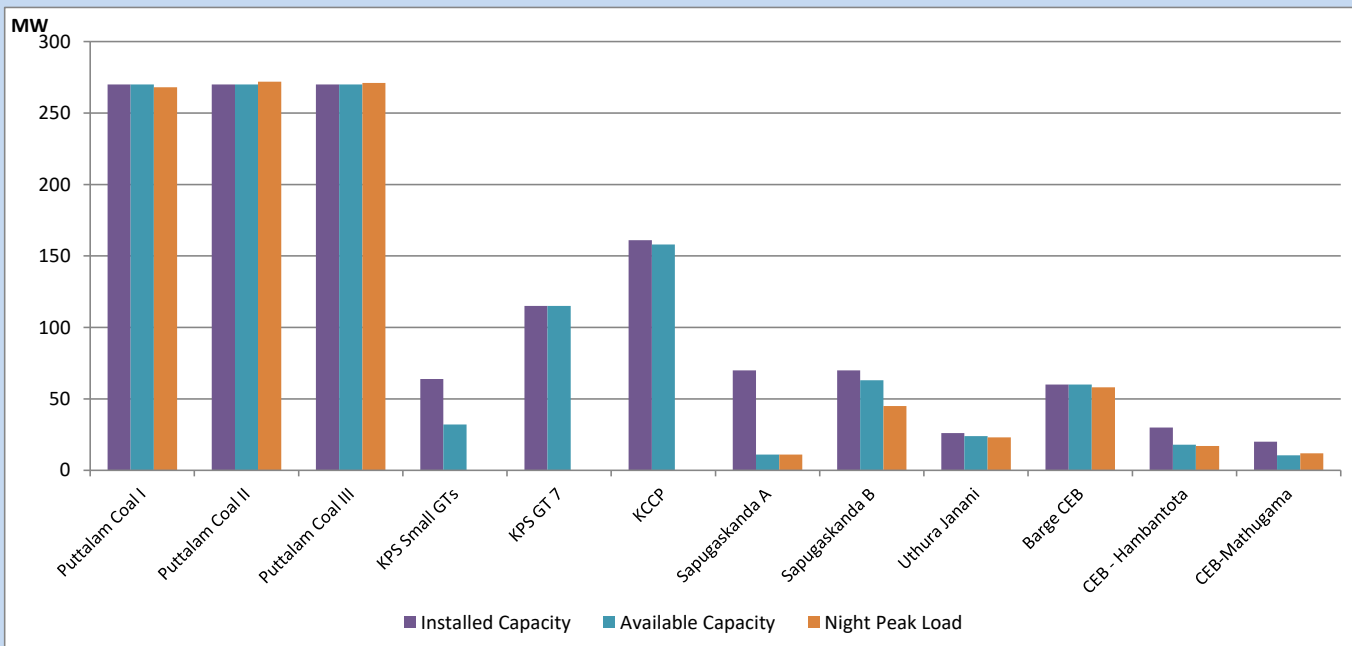
April 17, 2023



Available Generation is estimated based on plant availability at 6.00am on

April 18, 2023

CEB owned Thermal Plant Loading at the Night Peak

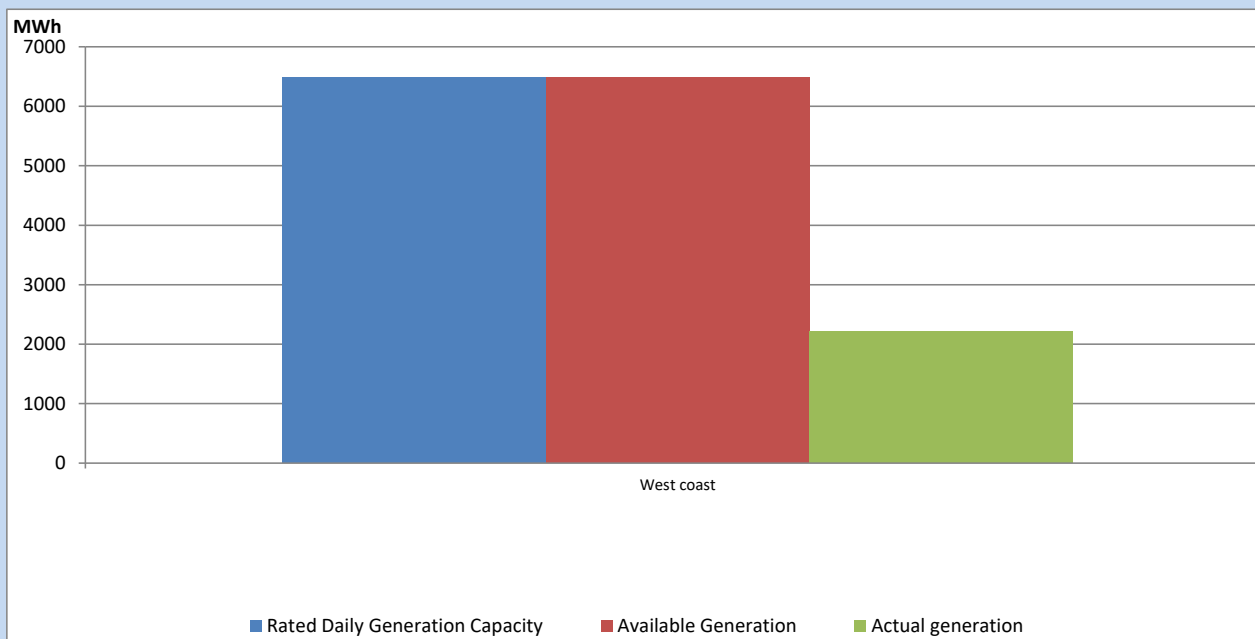


Note- Plant avilability is recorded at 6.00 am on

April 18, 2023

IPP owned Thermal Plant Dispatch

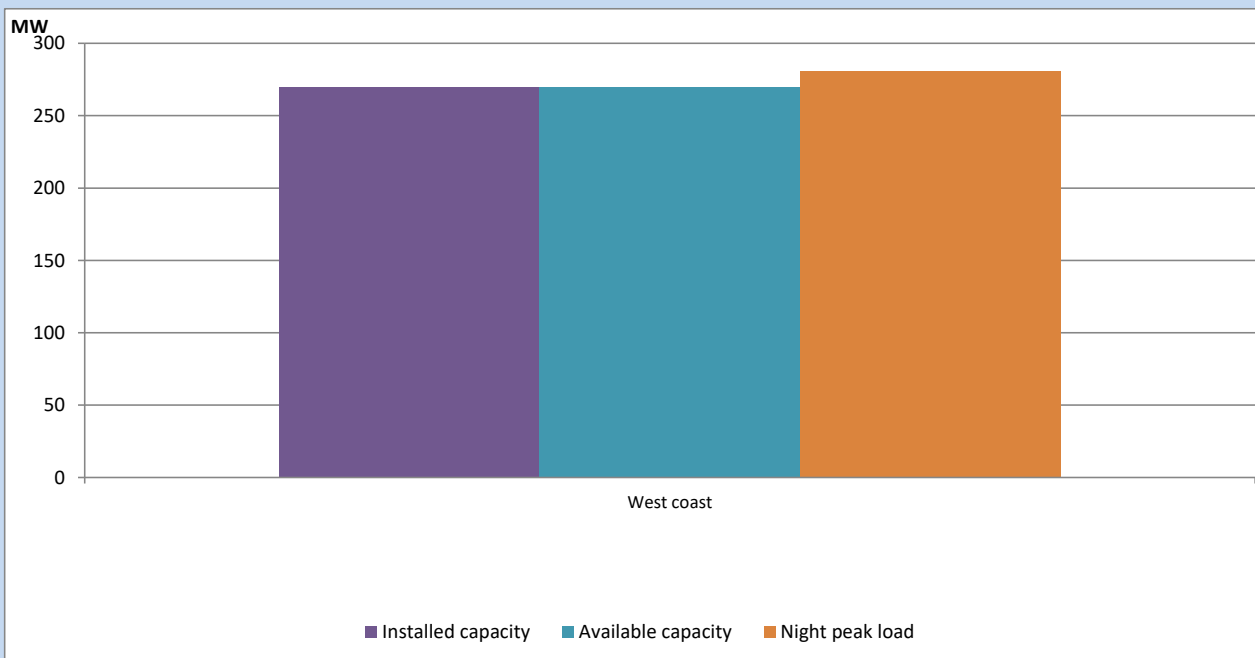
April 17, 2023



Available Generation is estimated based on plant availability at 6.00am on

April 18, 2023

IPP owned Thermal Plant Loading at the Night Peak

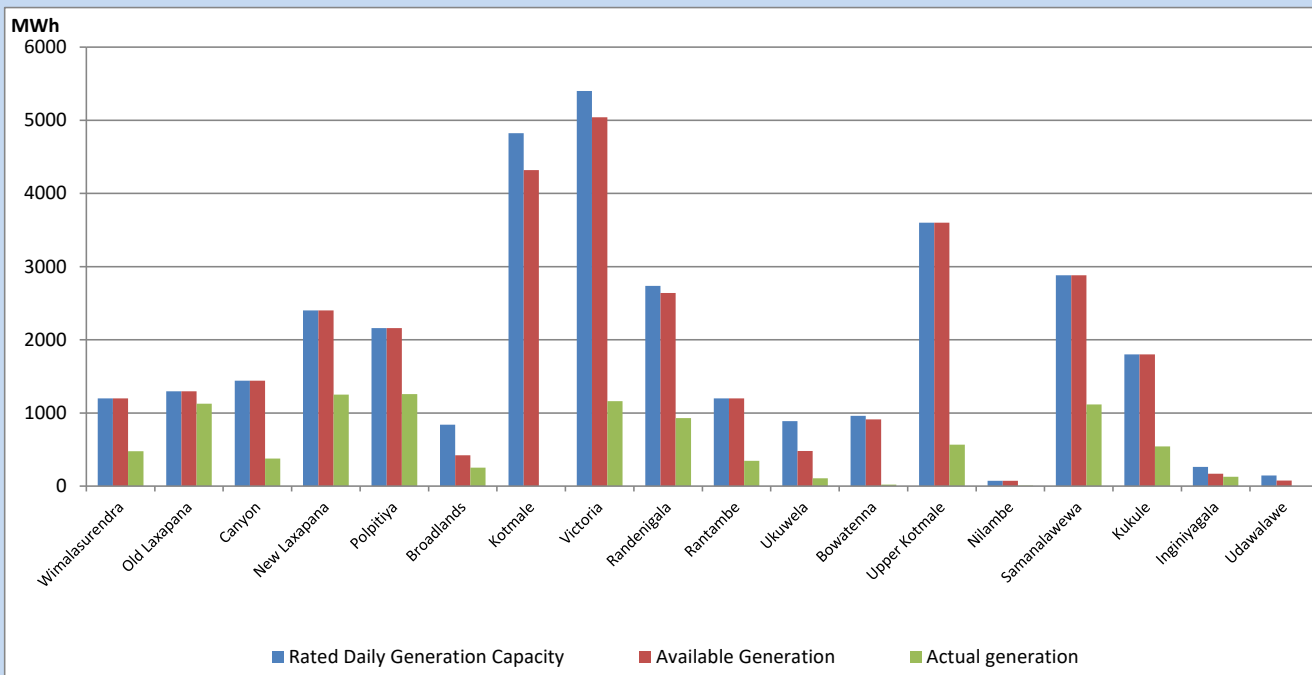


Note- Plant availability is recorded at 6.00 am on

April 18, 2023

Major Hydro Plant Dispatch

April 17, 2023

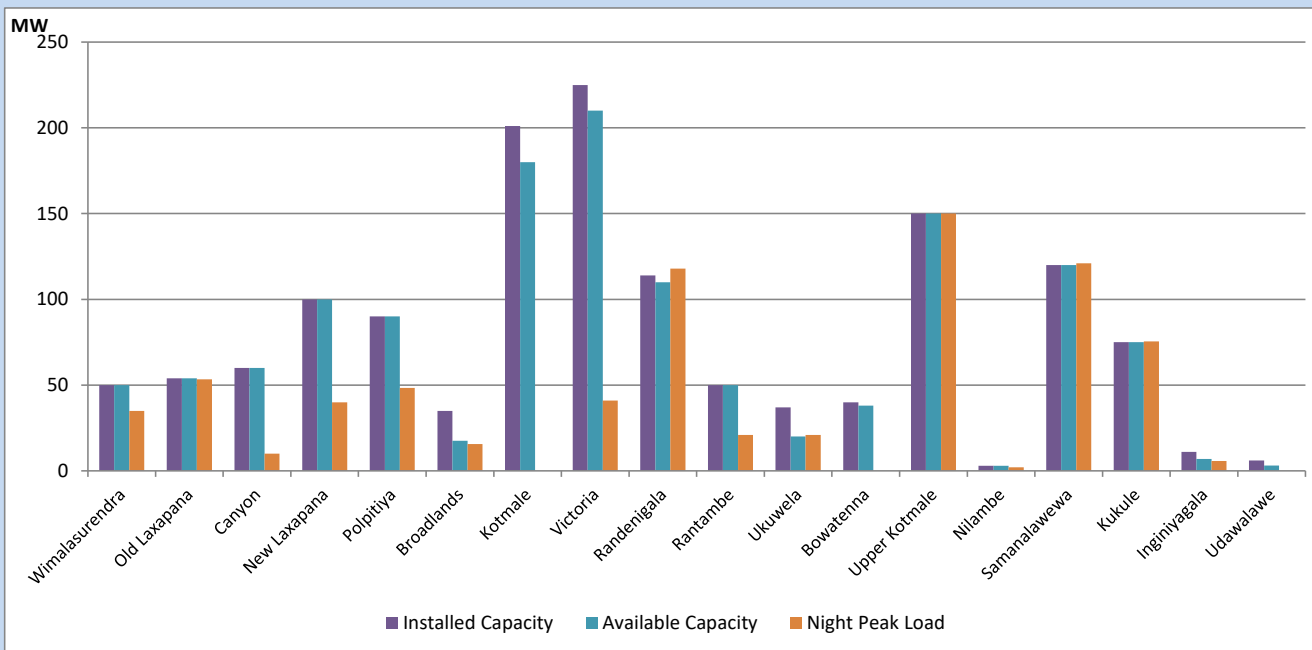


Available Generation is estimated based on plant availability at 6.00am on
Broadlands power plant is operating in the Commissioning Stage

April 18, 2023

Major Hydro Plant Loading at Night Peak

April 17, 2023



Note- Plant availability is recorded at 6.00 am on
Broadlands power plant is operating in the Commissioning Stage

April 18, 2023

Summary of Major Plant performance

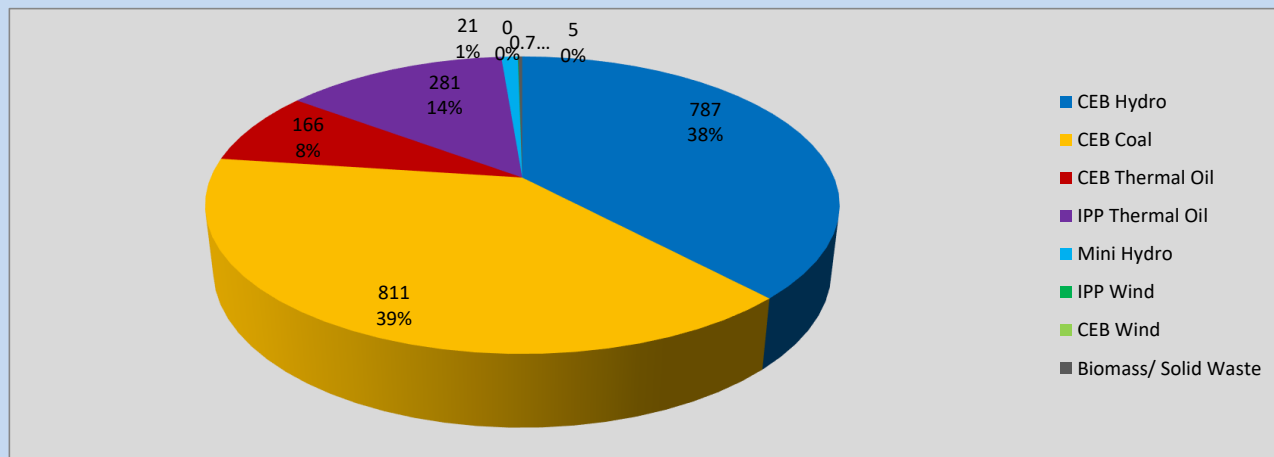
Plant	Installed Capacity	Plant Availability	Night peak Load	Plant Dispatch
	(MW)	(MW)	(MW)	(MWh)
Wimalasurendra	50	50	35	477
Old Laxapana	54	54	53	1,128
Canyon	60	60	10	375
New Laxapana	100	100	40	1,251
Polpitiya	90	90	48	1,258
Broadlands	35	18	16	251
Kotmale	201	180	0	0
Victoria	225	210	41	1,161
Randenigala	114	110	118	931
Rantambe	50	50	21	347
Ukuwela	37	20	21	106
Bowatenna	40	38	0	19
Upper Kotmale	150	150	150	566
Nilambe	3	3	2	7
Samanalawewa	120	120	121	1,115
Kukule	75	75	76	544
Inginiyagala	11	7	6	127
Udawalawe	6	3	0	0
Puttalam Coal I	270	270	268	6,403
Puttalam Coal II	270	270	272	6,464
Puttalam Coal III	270	270	271	6,428
KPS Small GTs	64	32	0	0
KPS GT 7	115	115	0	0
KCCP	161	158	0	0
Sapugaskanda A	70	11	11	246
Sapugaskanda B	70	63	45	1,157
Uthura Janani	26	24	23	449
Barge CEB	60	60	58	1,301
CEB-Hambantota	30	18	17	71
CEB-Mathugama	20	11	12	40
ACE Matara	24	0	0	0
Asia Power	50	0	0	0
Sojitz Kelanitissa	163	0	0	0
West Coast	270	270	281	2,219
Nothern Power	36	0	0	0
ACE Embilipitiya	93	0	0	0
Total	3,483	2,909	2,042	36,233

Plant availability is the availability recorded at 6 am on

April 18, 2023

Contribution to the Night Peak in MW

April 17, 2023

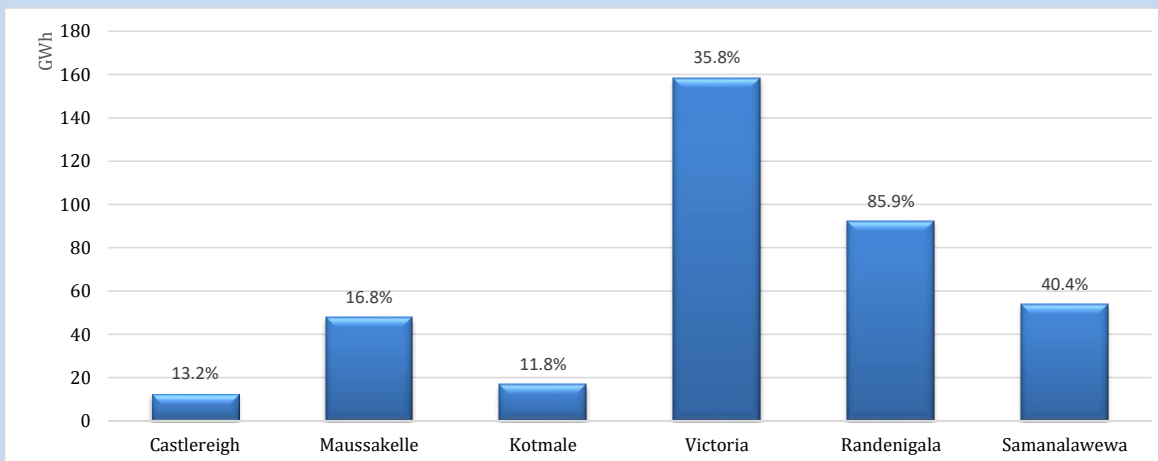


Night Peak*	2,071 MW
Day Peak	1,670 MW
Minimum Demand	1,078 MW

Above figures are excluding contribution from roof top solar, non telemetered solar and mini hydro plants

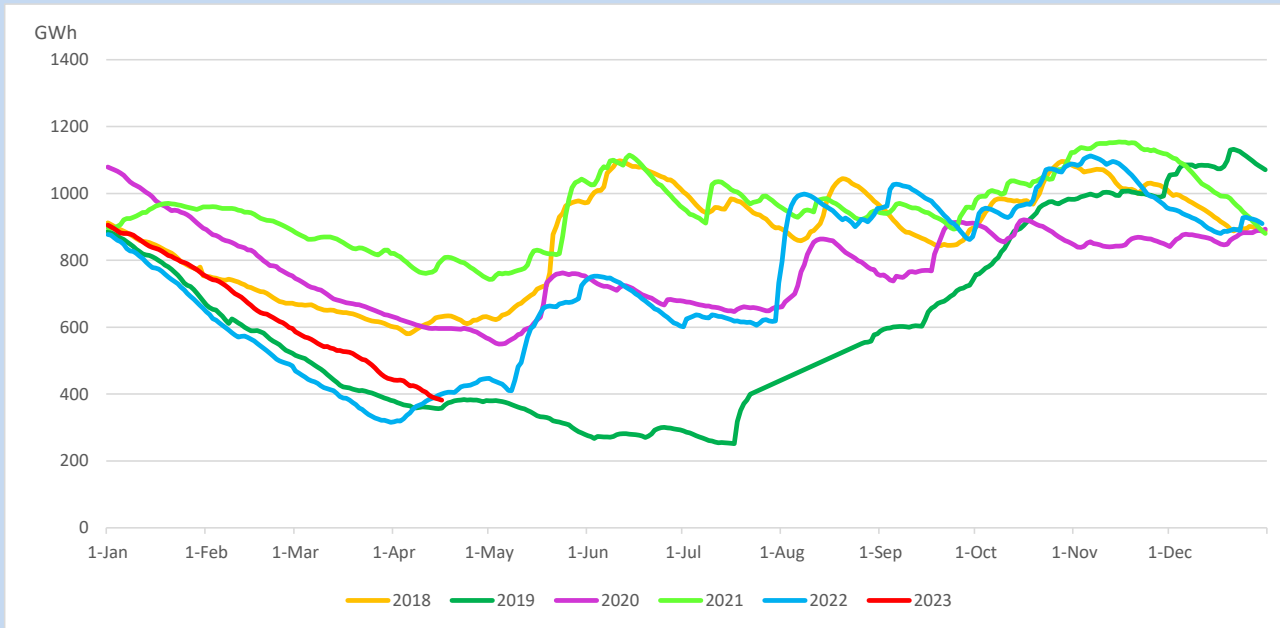
Reservoir Levels -

as at 06.00 Hr on April 18, 2023

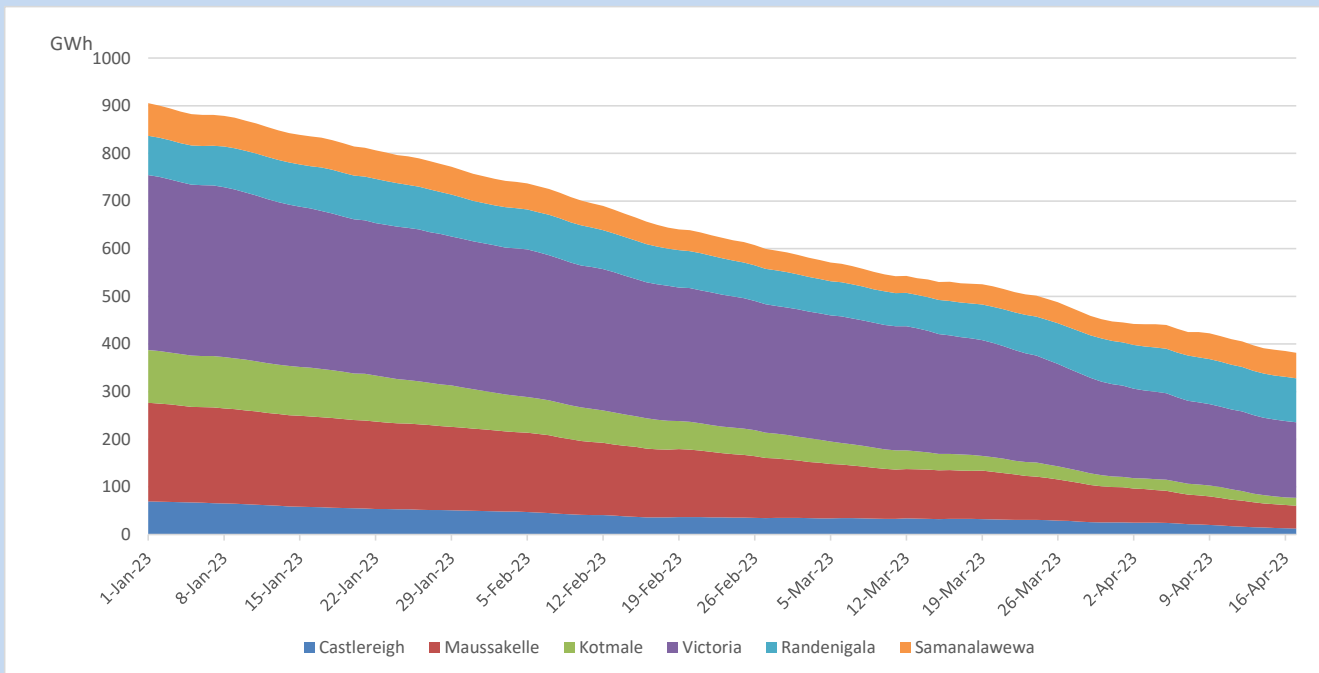


Total Reservoir Level	381.7 GWh
% of Total capacity	31.7%

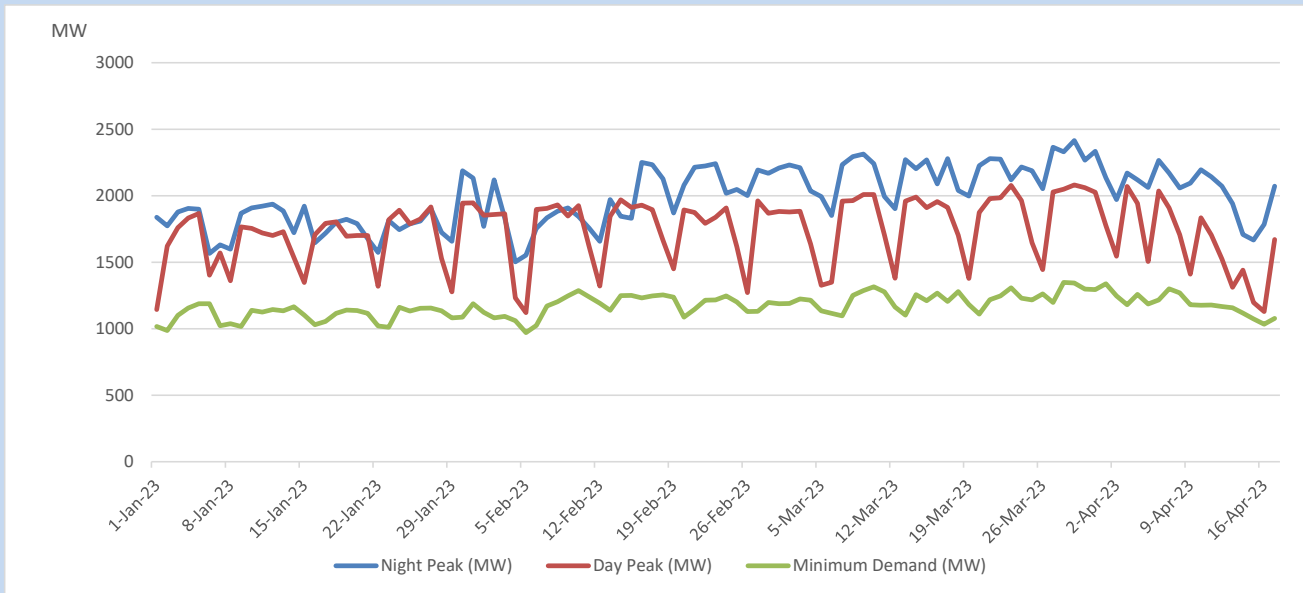
Comparison of Total Reservoir Storage Levels with Past Years



Variation of Major Hydro Reservoir Levels in the current year (GWh)



Variation of Demand during the current year

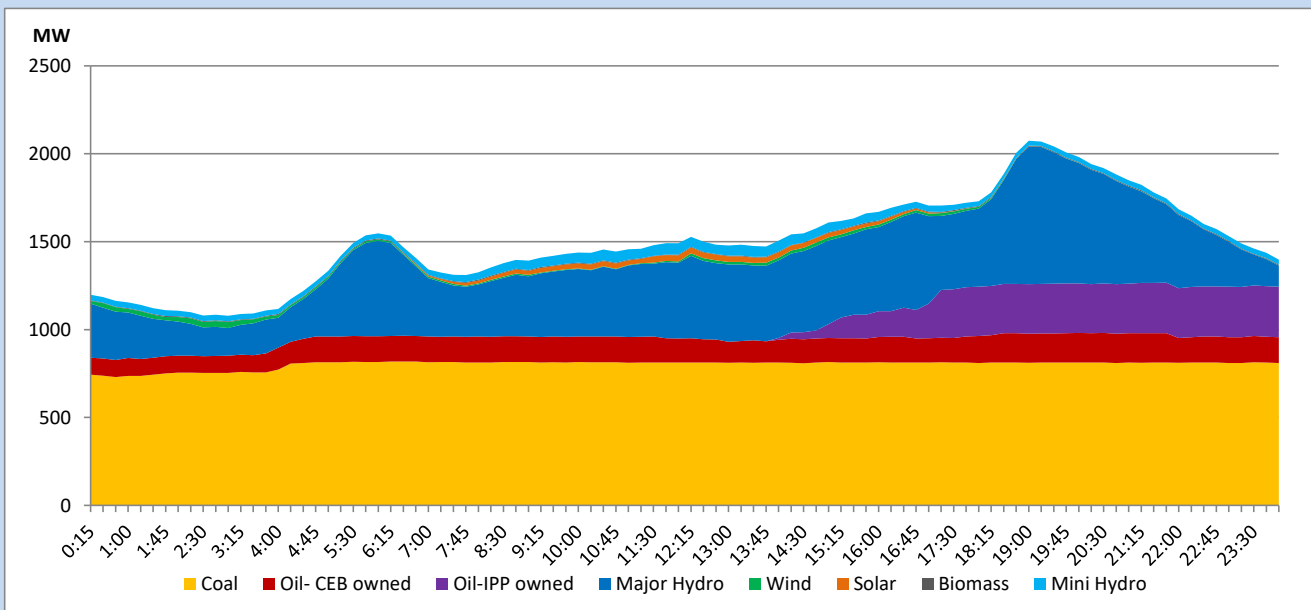


The above figures are excluding contribution from roof top solar, non telemetered solar and mini hydro plants

Daily Load Curve

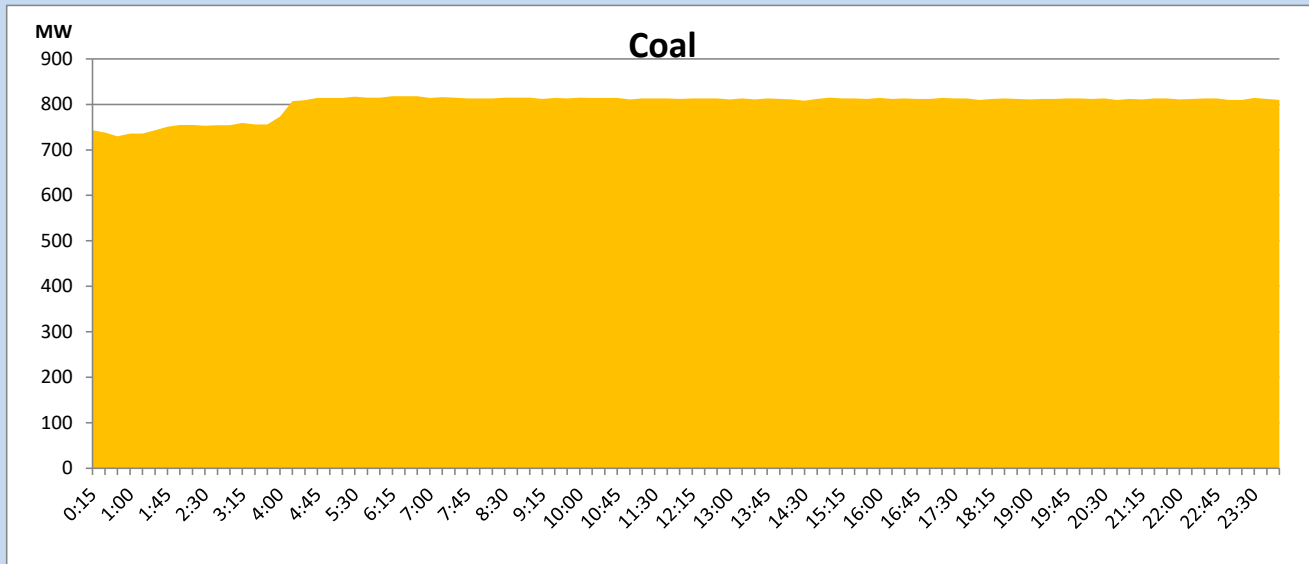
April 17, 2023

Solar and wind data is based on Telemetered Power Stations only



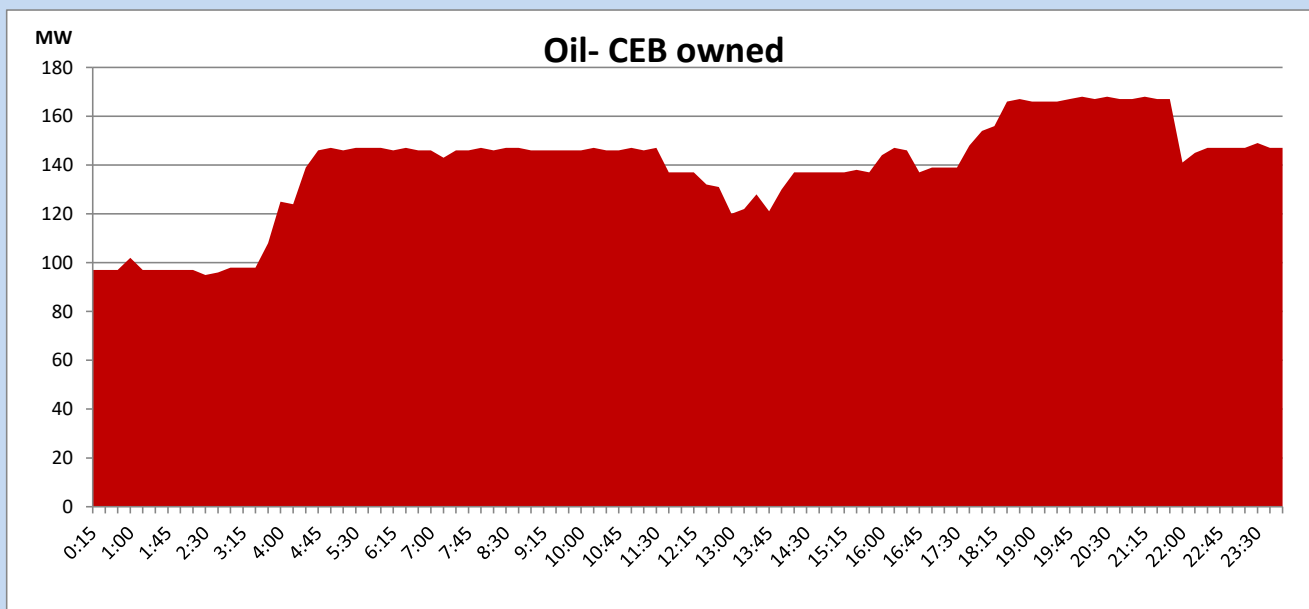
Coal Generation during

April 17, 2023



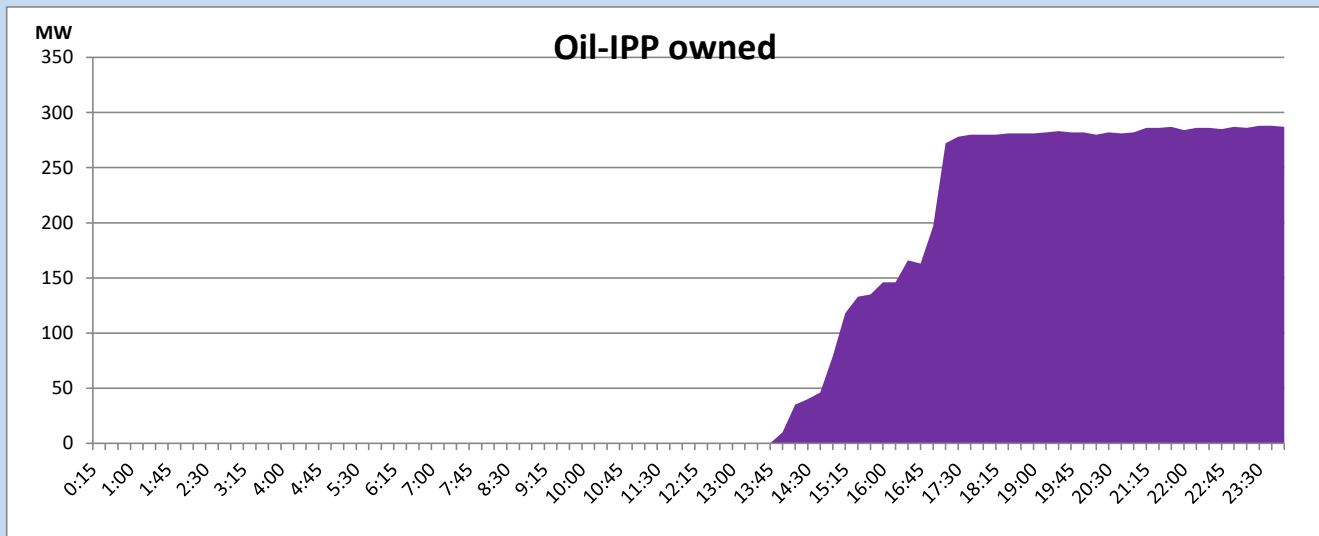
CEB Oil Plant Generation during

April 17, 2023



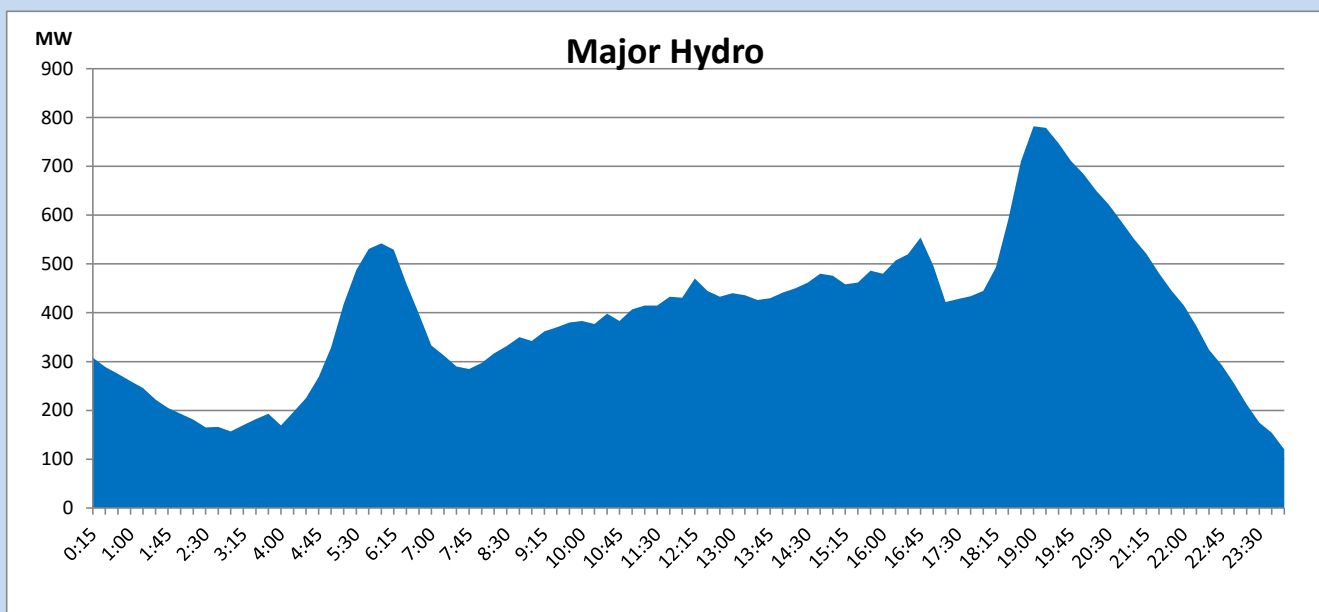
IPP Oil Plant Generation during

April 17, 2023



Major Hydro Generation during

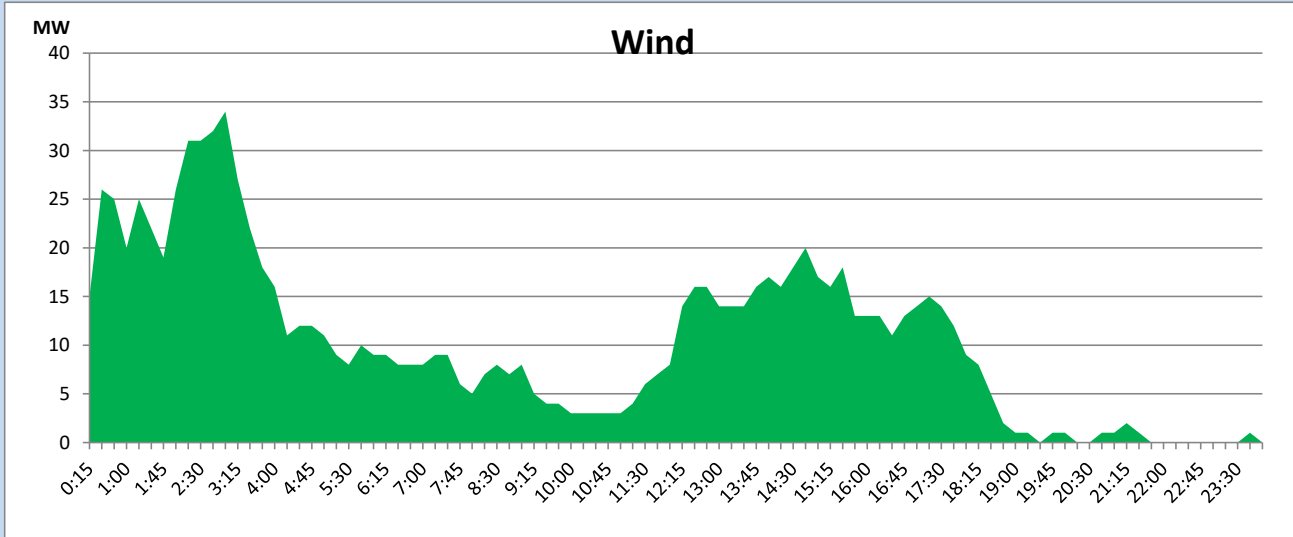
April 17, 2023



Wind Generation during

April 17, 2023

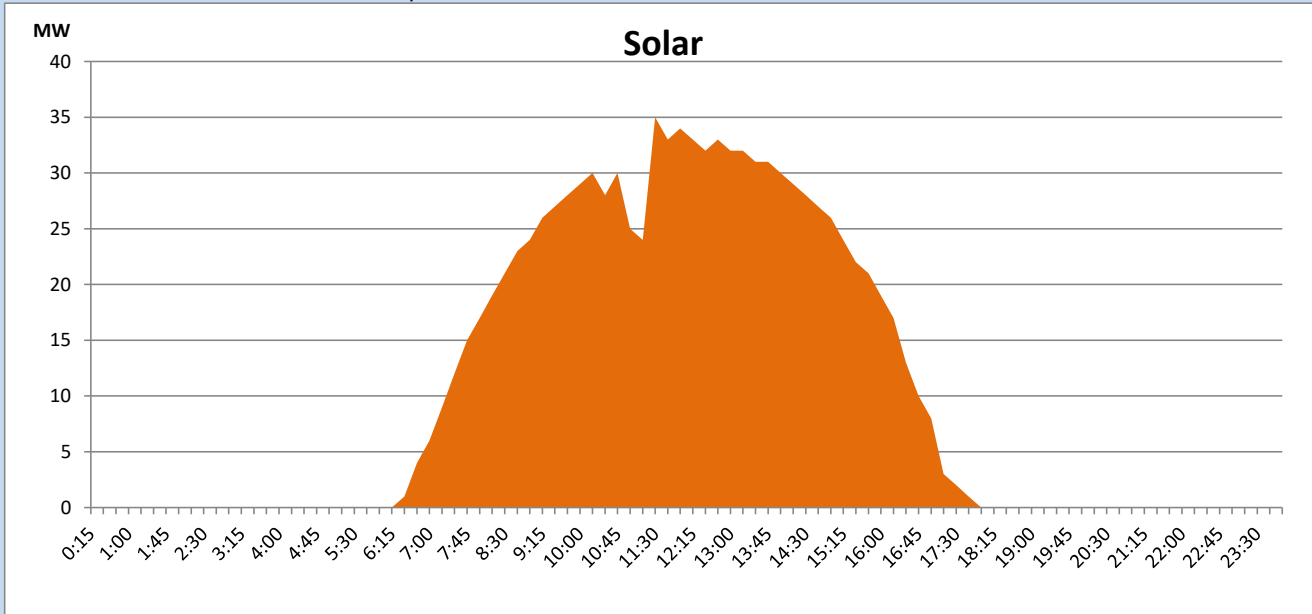
Based on Telemetered Power Stations only



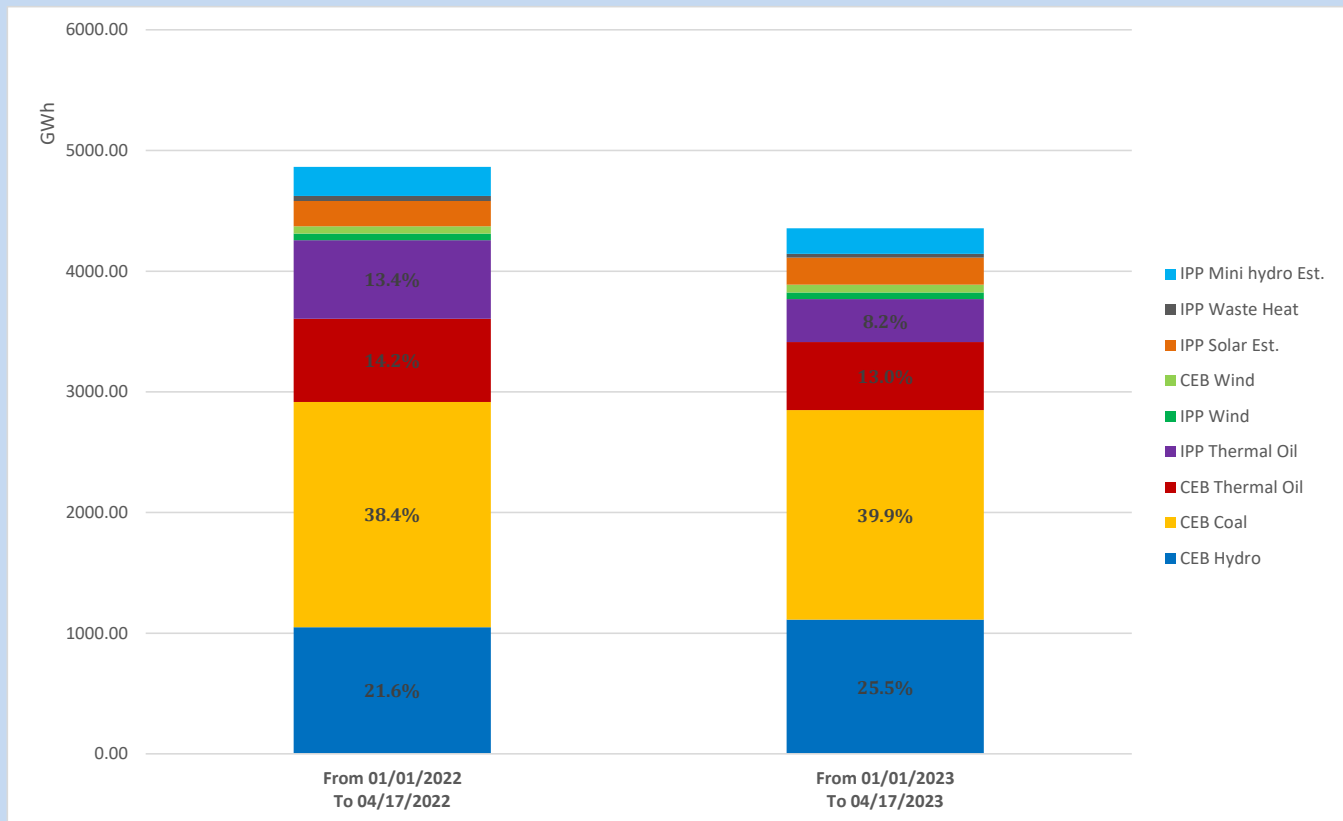
Solar Generation during

April 17, 2023

Based on Telemetered Power Stations only



Cumulative Dispatch Comparison with Last Year



The above figures are including contribution from roof top solar, non telemetered solar and mini hydro plants

Thermal Plant Fuel types

Power Station	Primary Fuel
CEB Thermal	
Sapugaskanda 1	Heavy Fuel
Sapugaskanda 2	Heavy Fuel
Kelanitissa Small Gas Turbines	Auto Diesel
GT 7 - Kelanitissa	Auto Diesel
Kelanitissa CCY	Naphtha or Diesel
Lakvijaya 1	Coal
Lakvijaya 2	Coal
Lakvijaya 3	Coal
Uthuru Janani	Heavy Fuel
Barge CEB	Heavy Fuel

Power Station	Primary Fuel
Private Thermal	
West Coast	Auto Diesel / Heavy Fuel

Major Incidents reported during the day

April 17, 2023

- 1) Panadura 132/33kV T/F 02 tripped from both sides at 15:46hrs due to operation of LV E/F protection. At the same time 132/33kV T/F 03 tripped from 33kV side only due to operation of LV E/F protection and 33kV B/S CB tripped due to operation of O/C protection, causing 33kV B/S 02 to be dead. Panadura T/F 02 restored at 16:27hrs and 33kV B/S CB restored at 16:28hrs. All affected feeders, except feeder 0 restored at 16:31hrs and feeders 06 restored at 22:08hrs. Panadura T/F 03 restored at 16:37hrs
- 2) Sapugaskanda P/S unit 11 tripped at 11:46hrs due to Lub oil pump failure. Sapugaskanda P/S unit 11 resumed generation at 21:59hrs.
- 3) WPS unit 02 tripped at 15:31hrs due to a sensor fault. WPS unit 02 resumed generation at 15:45hrs.
- 4) Sapugaskanda P/S unit 06 tripped at 16:38hrs due to high oil mist concentration. Sapu unit 06 is yet to resume generation.