

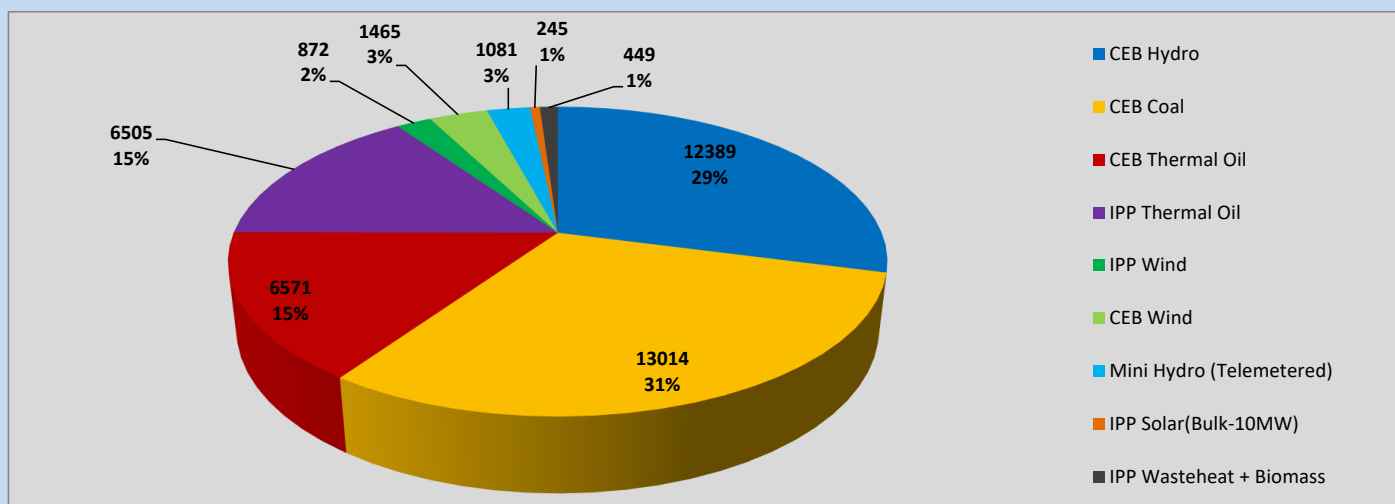
Generation and Reservoirs Statistics

May 16, 2023



PUBLIC UTILITIES COMMISSION OF SRI LANKA

Daily Generation Mix in MWh



Total Generation (Excluding estimated figures) =

42,591 MWh

Estimated figures of CEB generation report

Estimated unserved energy = 0.00 GWh

Estimated Mini Hydro (Non telemetered) = 3322 MWh

Estimated IPP Solar PV (Bulk 1-10MW) = 304 MWh

Estimated Solar Roof Top PV = 1920 MWh

Cumulative Dispatch

Following data excludes the contribution from roof top solar, non telemetered solar and mini hydro plants

For Current Month

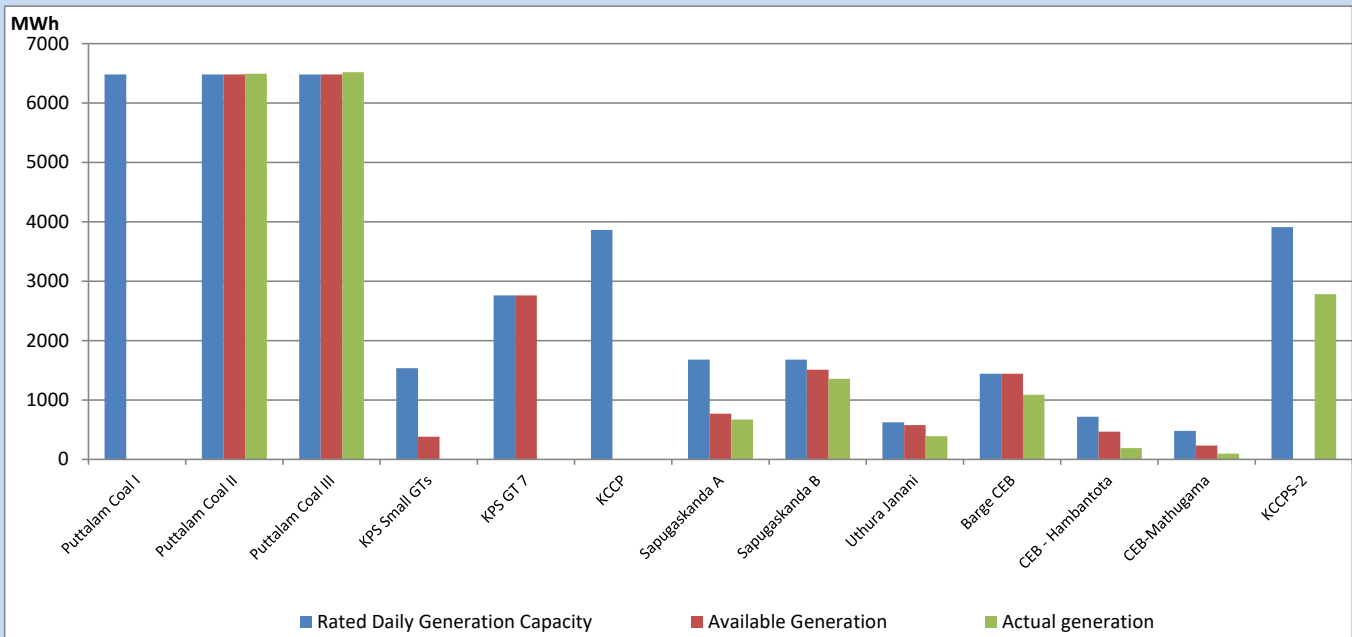
Category	Dispatch (GWh)	
CEB Hydro	136	23.32%
CEB Coal	279	47.99%
CEB Thermal Oil	67	11.54%
IPP Thermal	41	6.99%
SPP Wind	16	2.82%
CEB Wind	16	2.79%
Mini Hydro (Telemetered)	16	2.81%
IPP Solar(Bulk-10MW)	4	0.69%
IPP Wasteheat + BMP	6	1.01%
Total	582	

For Current Year

Category	Dispatch (GWh)	
CEB Hydro	1,337	26.04%
CEB Coal	2,266	44.12%
CEB Thermal Oil	722	14.06%
IPP Thermal	458	8.92%
SPP Wind	74	1.45%
CEB Wind	86	1.68%
Mini Hydro (Telemetered)	112	2.18%
IPP Solar(Bulk-10MW)	39	0.75%
IPP Wasteheat	41	0.79%
Total	5,136	

CEB owned Thermal Plant Dispatch

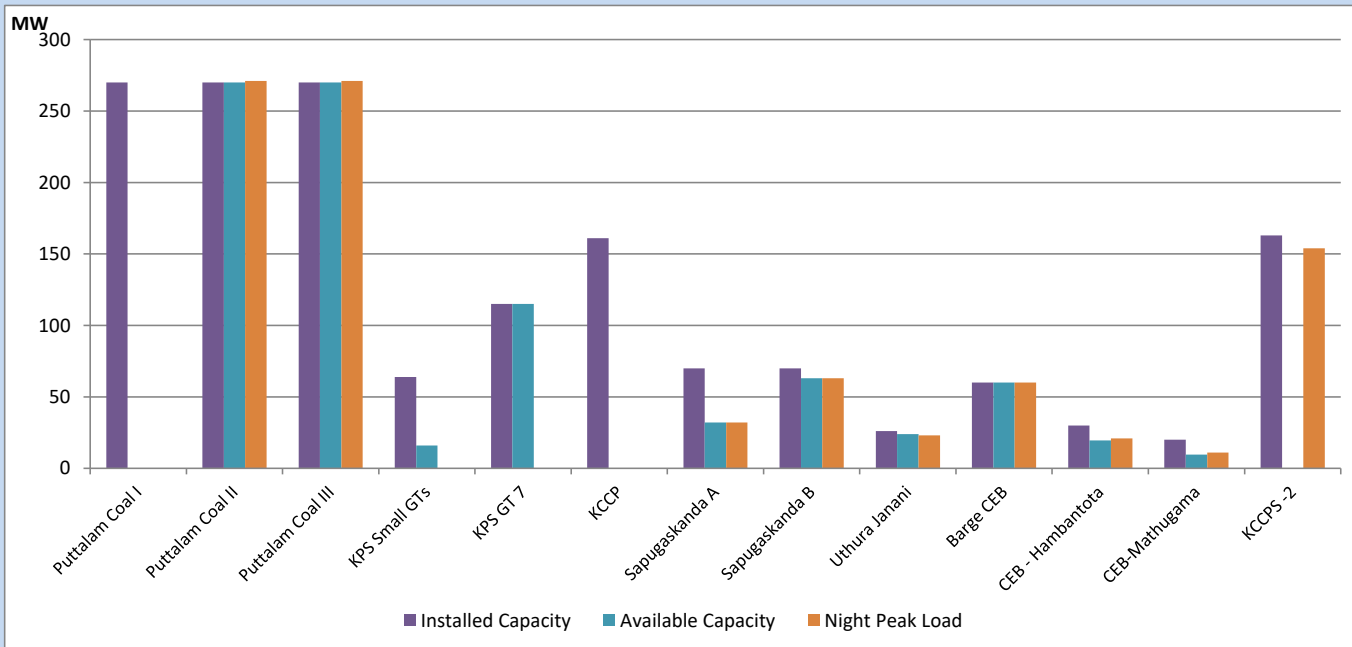
May 16, 2023



Available Generation is estimated based on plant availability at 6.00am on

May 17, 2023

CEB owned Thermal Plant Loading at the Night Peak

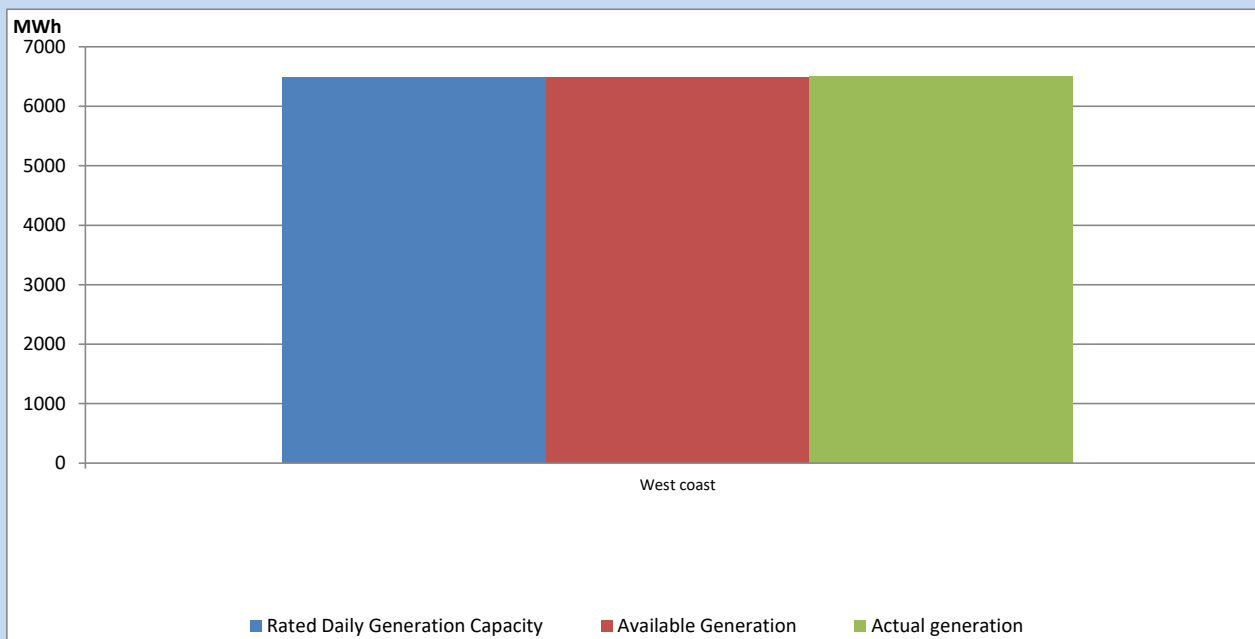


Note-
Plant availability is recorded at 6.00 am on

May 17, 2023

IPP owned Thermal Plant Dispatch

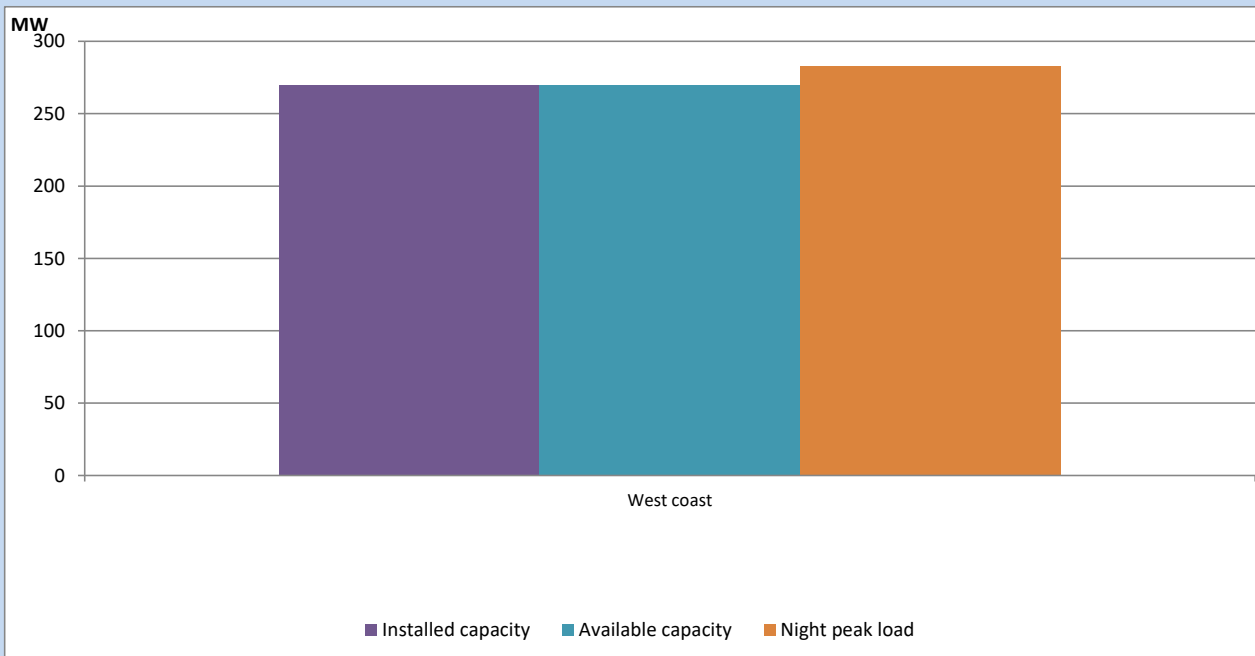
May 16, 2023



Available Generation is estimated based on plant availability at 6.00am on

May 17, 2023

IPP owned Thermal Plant Loading at the Night Peak

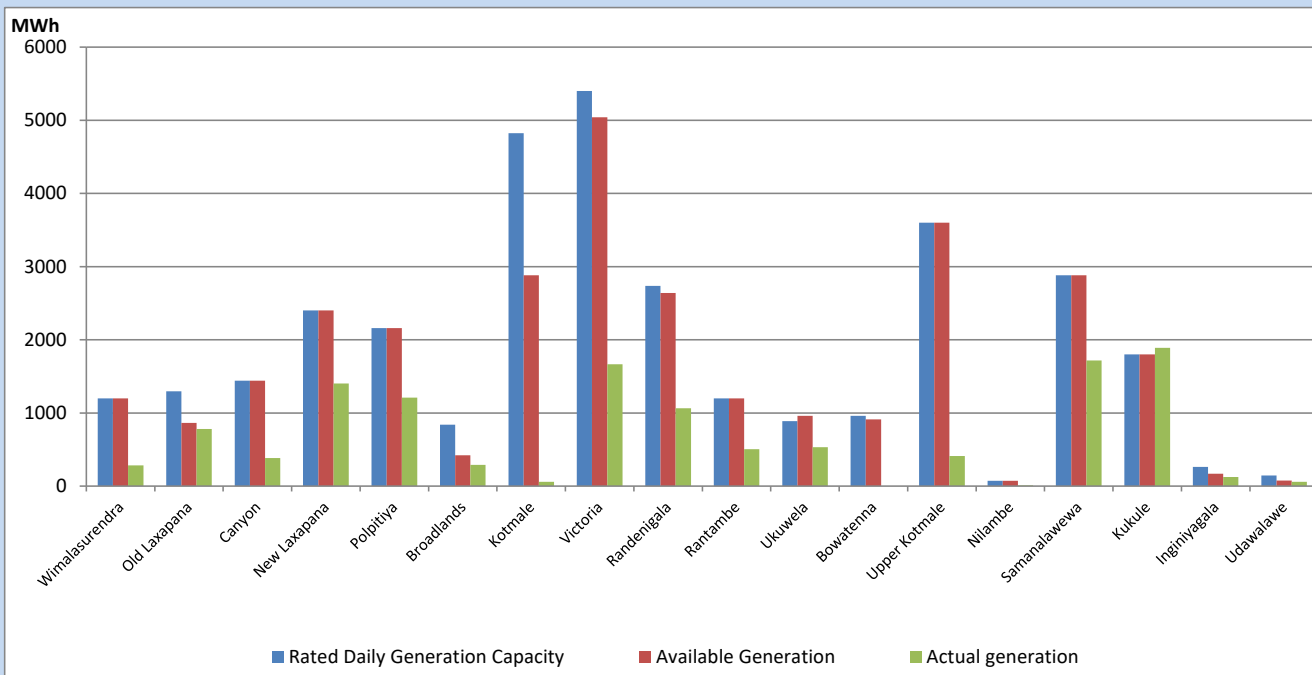


Note- Plant availability is recorded at 6.00 am on

May 17, 2023

Major Hydro Plant Dispatch

May 16, 2023

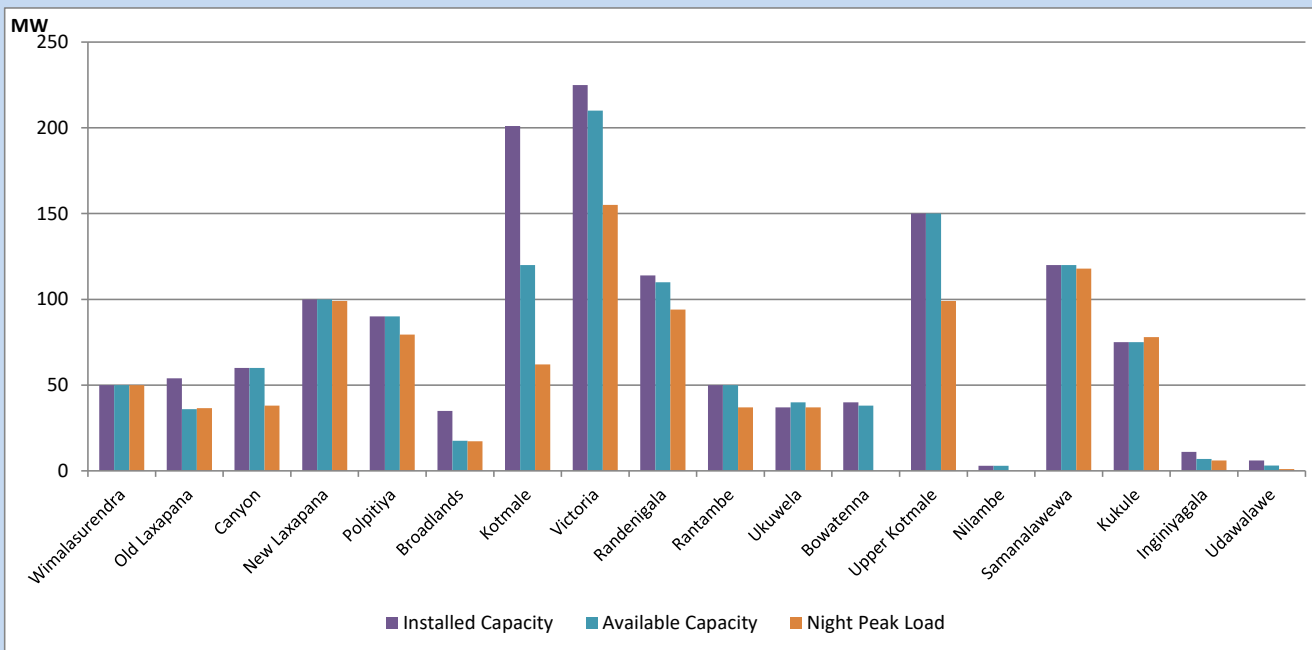


Available Generation is estimated based on plant availability at 6.00am on
Broadlands power plant is operating in the Commissioning Stage

May 17, 2023

Major Hydro Plant Loading at Night Peak

May 16, 2023



Note- Plant availability is recorded at 6.00 am on
Broadlands power plant is operating in the Commissioning Stage

May 17, 2023

Summary of Major Plant performance

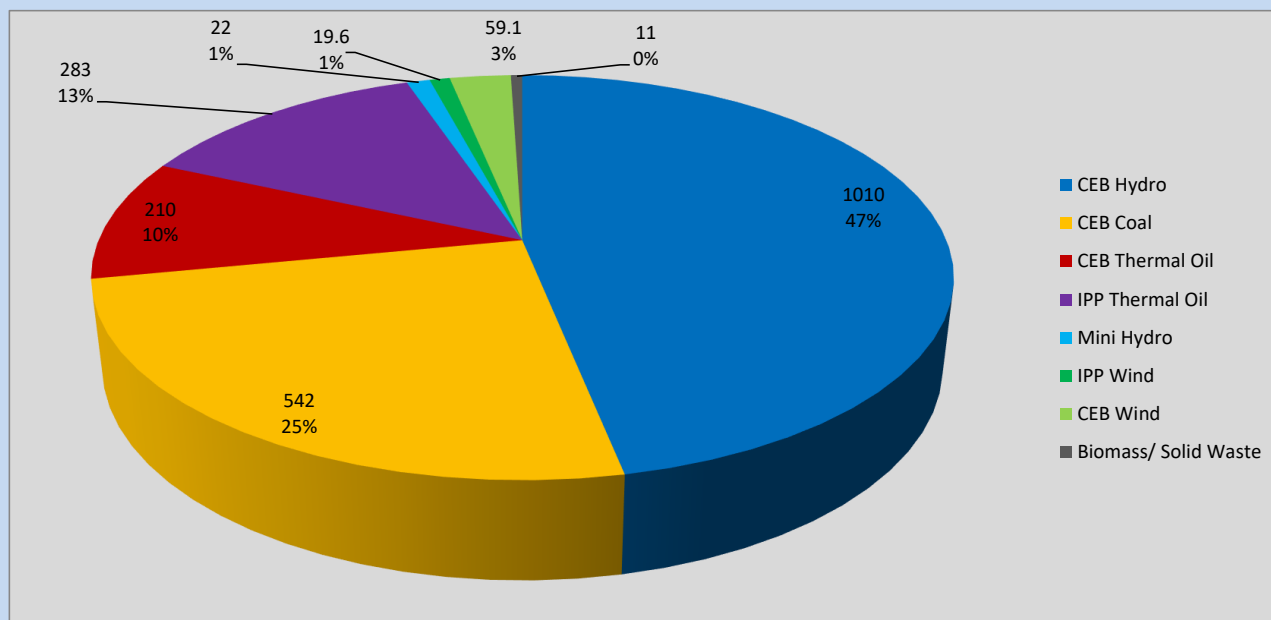
Plant	Installed Capacity	Plant Availability	Night peak Load	Plant Dispatch
	(MW)	(MW)	(MW)	(MWh)
Wimalasurendra	50	50	50	284
Old Laxapana	54	36	37	780
Canyon	60	60	38	382
New Laxapana	100	100	99	1,403
Polpitiya	90	90	80	1,208
Broadlands	35	18	17	289
Kotmale	201	120	62	60
Victoria	225	210	155	1,666
Randenigala	114	110	94	1,063
Rantambe	50	50	37	504
Ukuwela	37	40	37	532
Bowatenna	40	38	0	0
Upper Kotmale	150	150	99	412
Nilambe	3	3	0	12
Samanalawewa	120	120	118	1,717
Kukule	75	75	78	1,891
Inginiyagala	11	7	6	126
Udawalawe	6	3	1	60
Puttalam Coal I	270	0	0	0
Puttalam Coal II	270	270	271	6,495
Puttalam Coal III	270	270	271	6,519
KPS Small GTs	64	16	0	0
KPS GT 7	115	115	0	0
KCCP	161	0	0	0
Sapugaskanda A	70	32	32	672
Sapugaskanda B	70	63	63	1,355
Uthura Janani	26	24	23	389
Barge CEB	60	60	60	1,087
CEB-Hambantota	30	20	21	192
CEB-Mathugama	20	10	11	95
ACE Matara	24	0	0	0
Asia Power	50	0	0	0
KCCPS -2	163	0	154	2,781
West Coast	270	270	283	6,505
Nothern Power	36	0	0	0
ACE Embilipitiya	93	0	0	0
Total	3,483	2,429	2,308	42,591

Plant availability is the availability recorded at 6 am on

May 17, 2023

Contribution to the Night Peak in MW

May 16, 2023

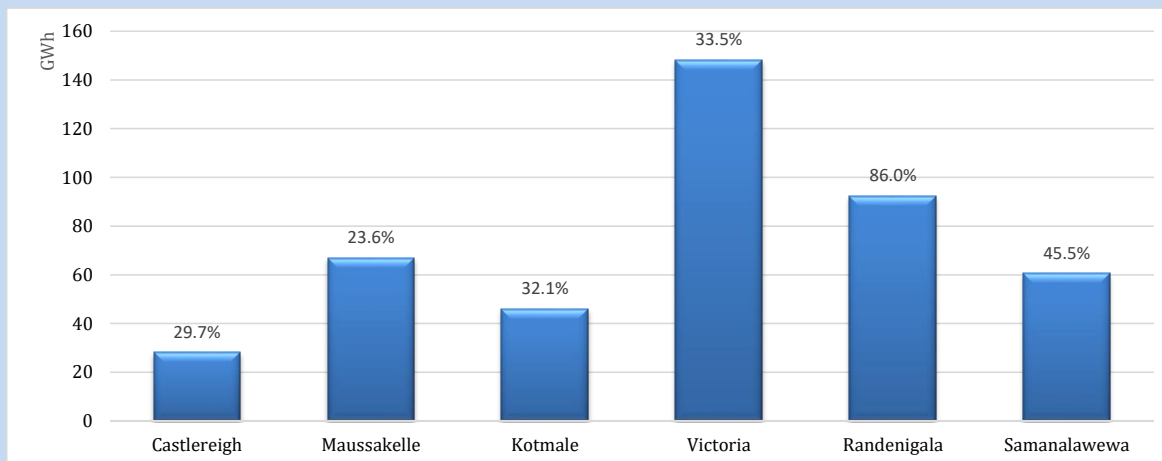


Night Peak*	2,311 MW
Day Peak	2,064 MW
Minimum Demand	1,749 MW

Above figures are excluding contribution from roof top solar, non telemetered solar and mini hydro plants

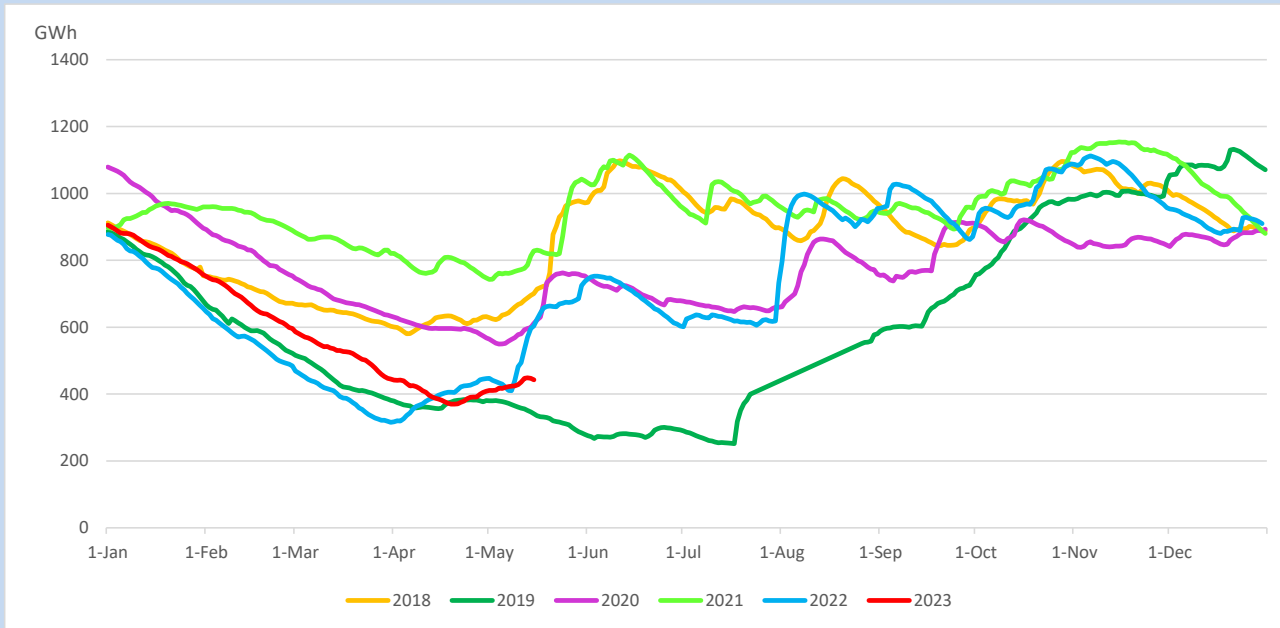
Reservoir Levels -

as at 06.00 Hr on May 17, 2023

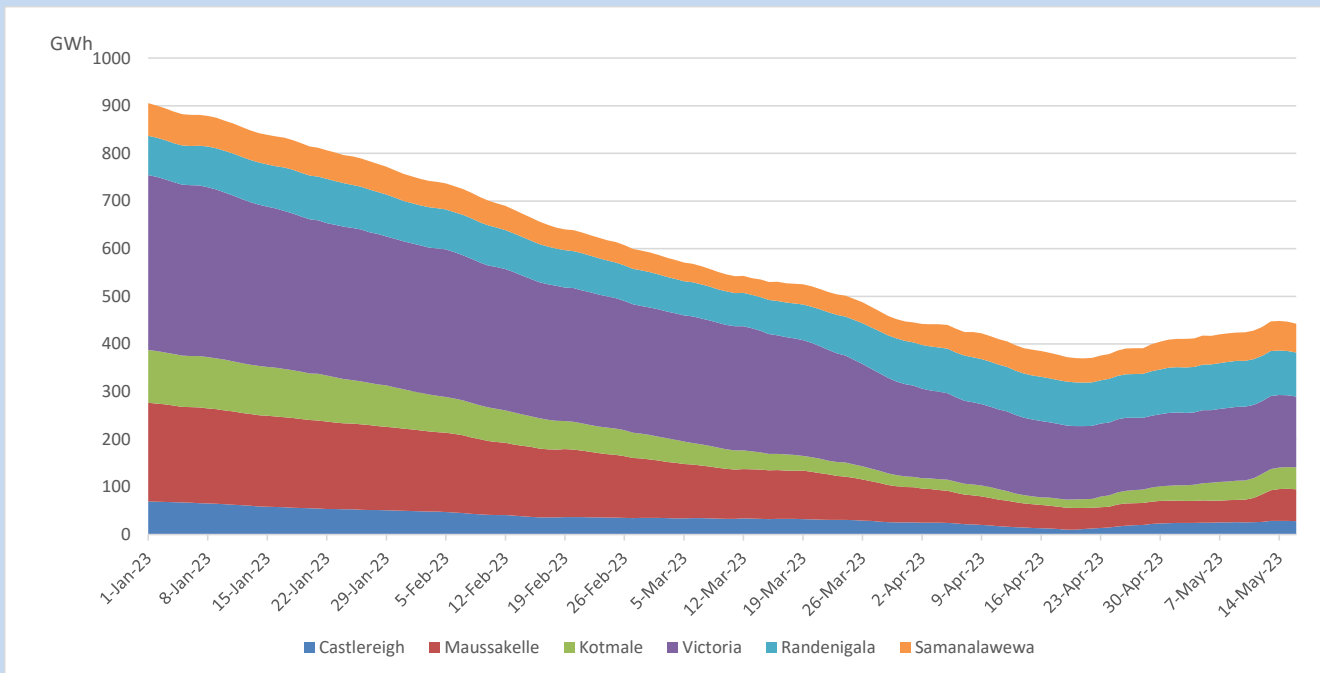


Total Reservoir Level	442.5 GWh
% of Total capacity	36.7%

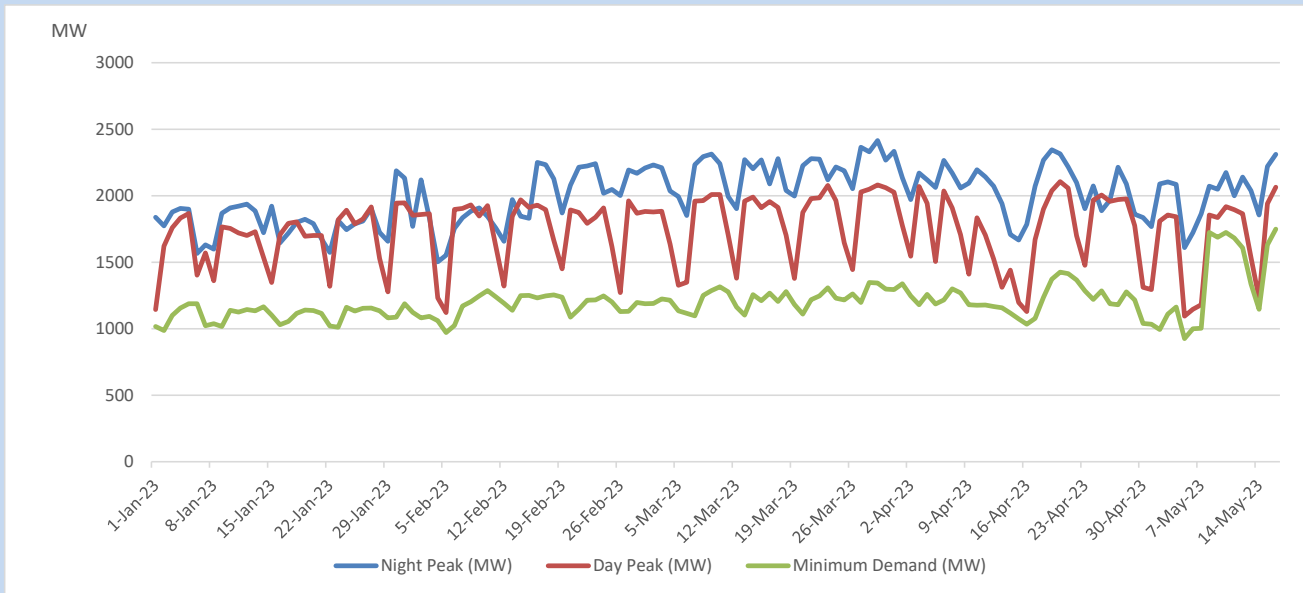
Comparison of Total Reservoir Storage Levels with Past Years



Variation of Major Hydro Reservoir Levels in the current year (GWh)



Variation of Demand during the current year

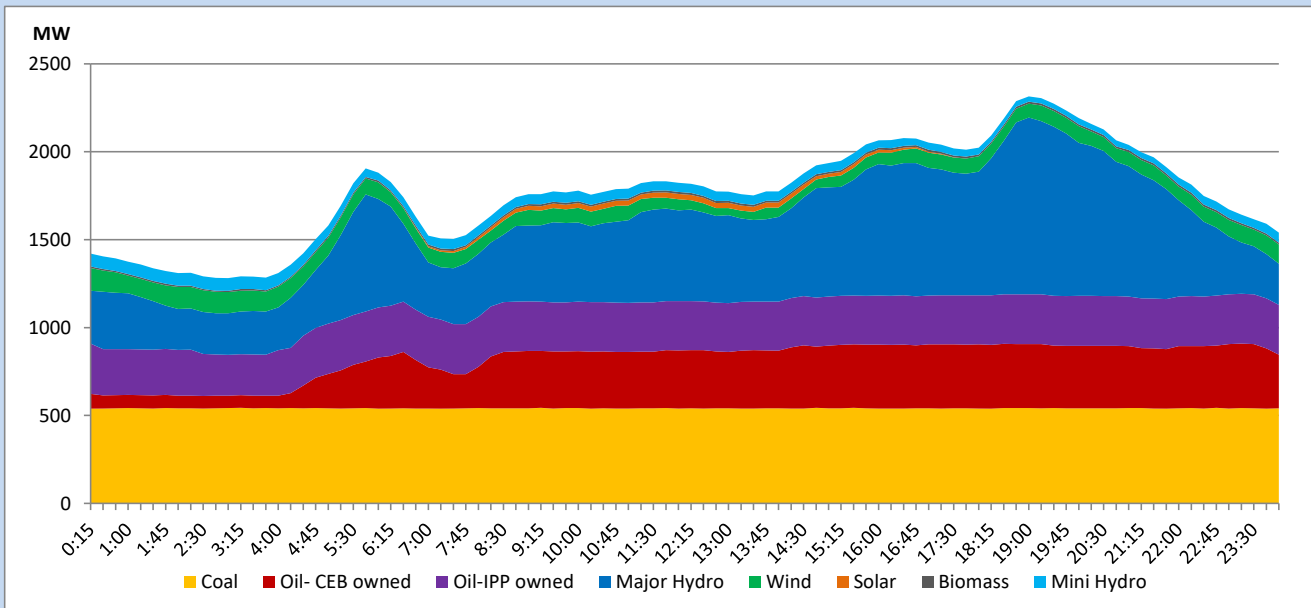


The above figures are excluding contribution from roof top solar, non telemetered solar and mini hydro plants

Daily Load Curve

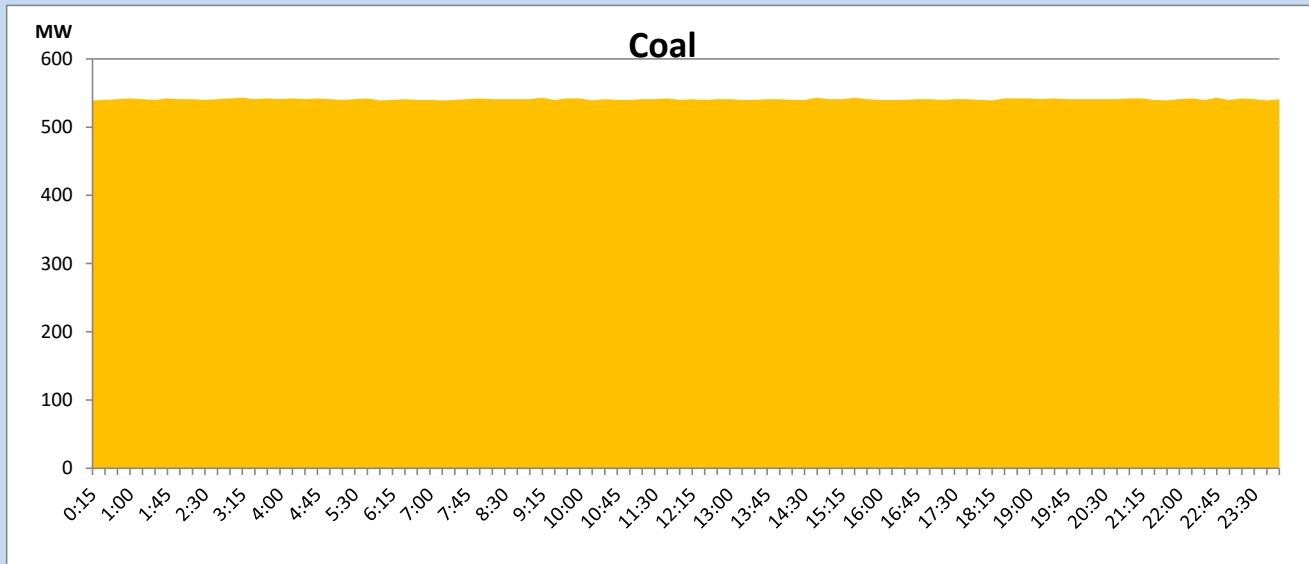
May 16, 2023

Solar and wind data is based on Telemetered Power Stations only



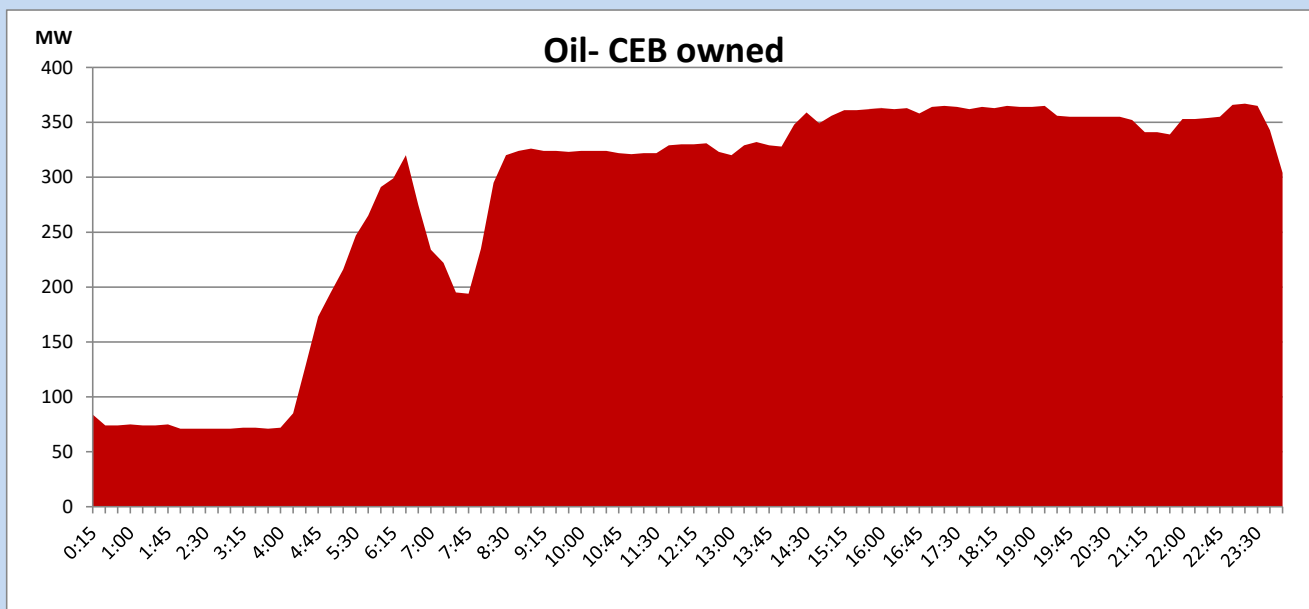
Coal Generation during

May 16, 2023



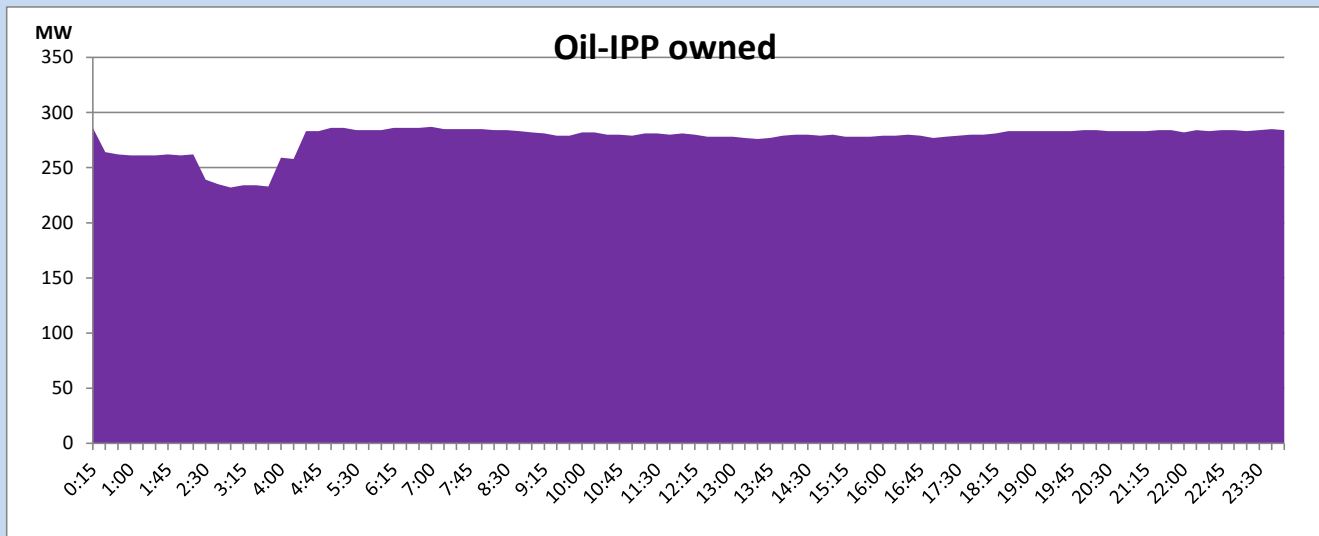
CEB Oil Plant Generation during

May 16, 2023



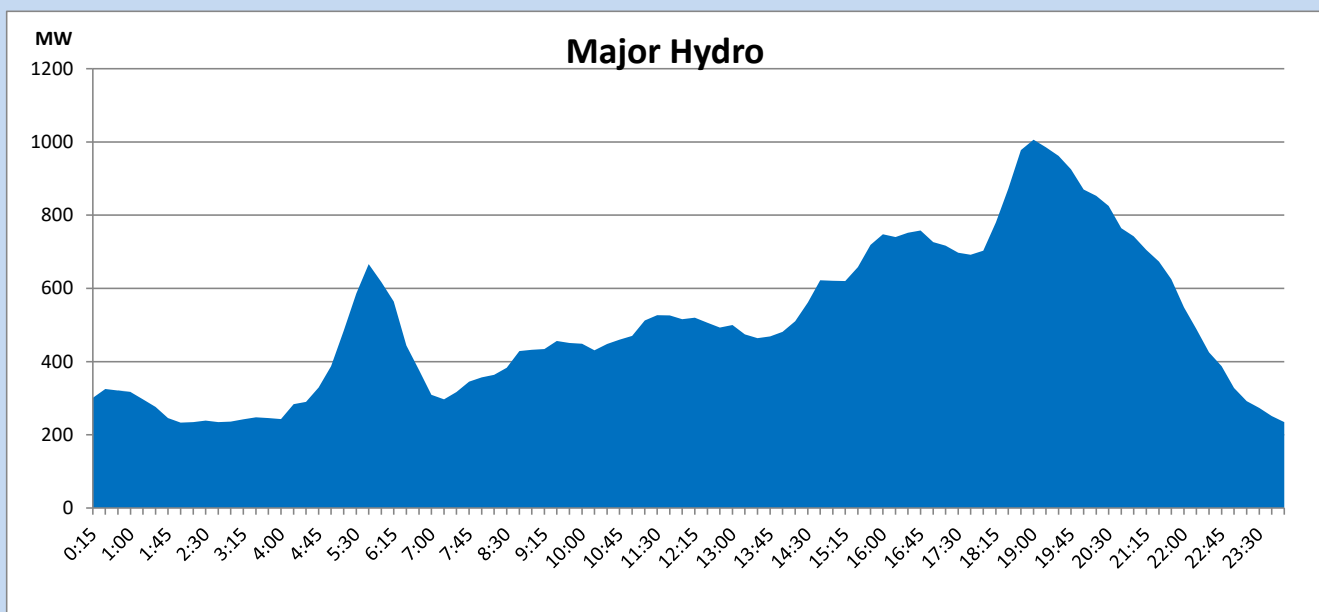
IPP Oil Plant Generation during

May 16, 2023



Major Hydro Generation during

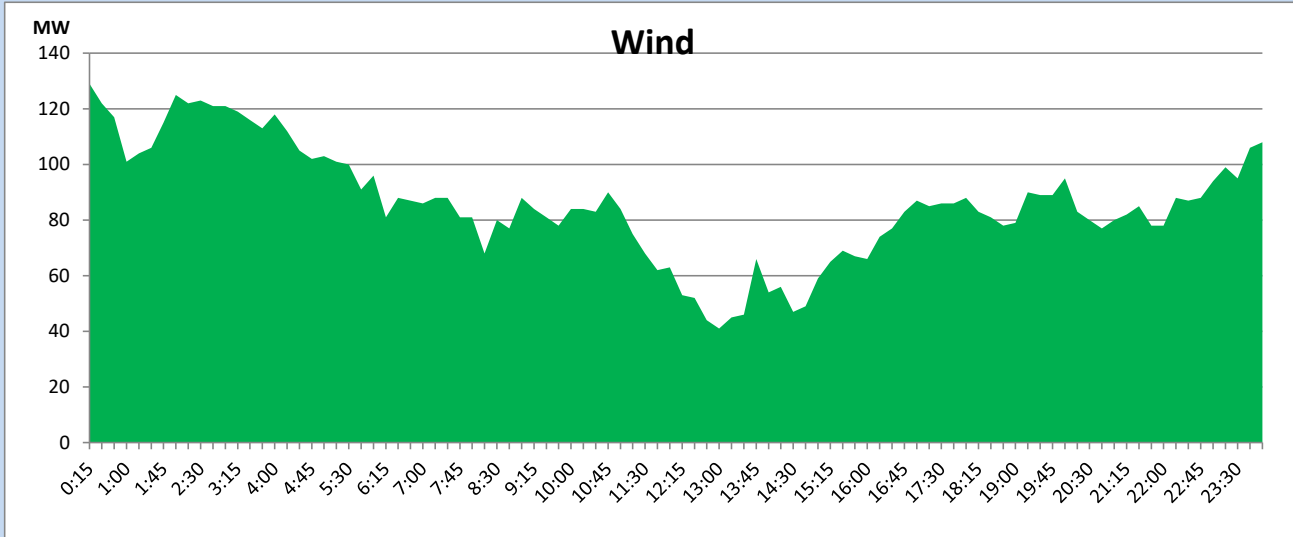
May 16, 2023



Wind Generation during

May 16, 2023

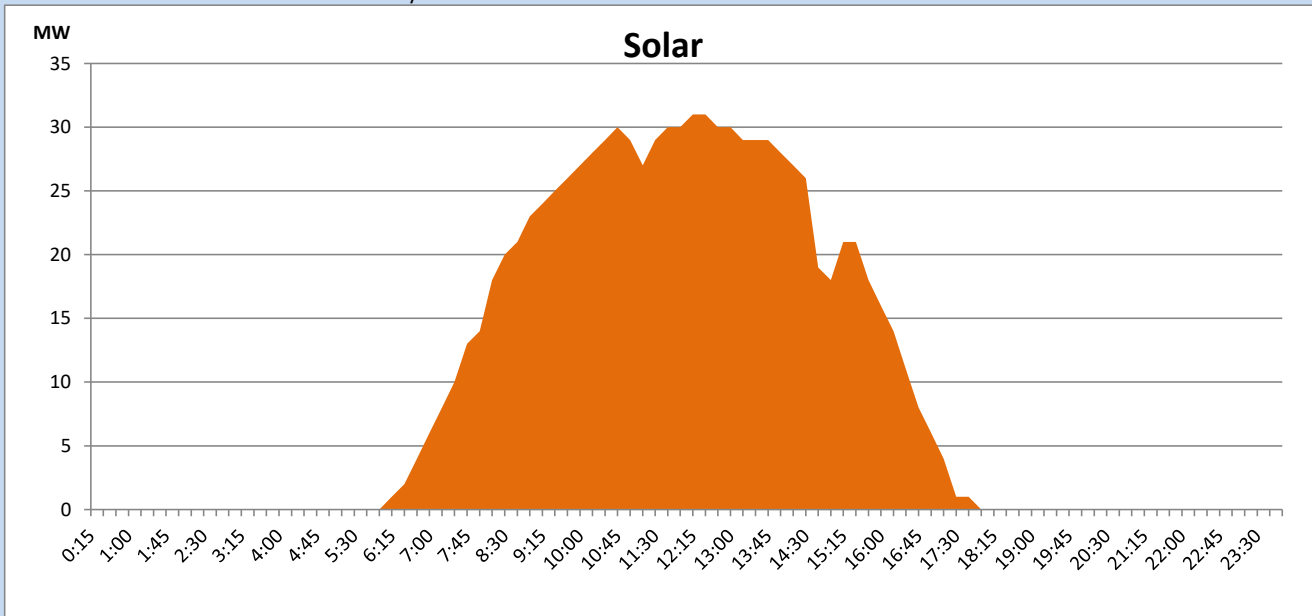
Based on Telemetered Power Stations only



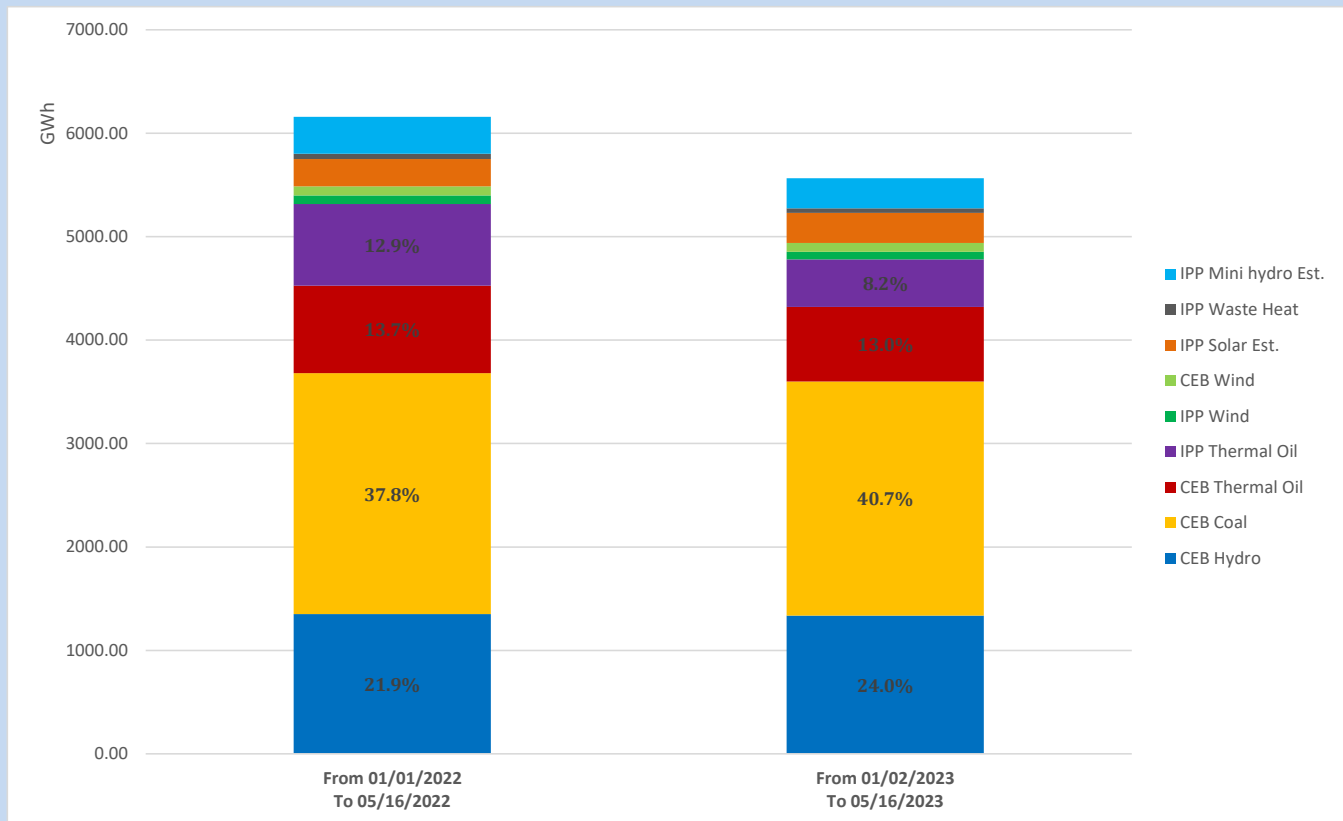
Solar Generation during

May 16, 2023

Based on Telemetered Power Stations only



Cumulative Dispatch Comparison with Last Year



The above figures are including contribution from roof top solar, non telemetered solar and mini hydro plants

Thermal Plant Fuel types

Power Station	Primary Fuel
CEB Thermal	
Sapugaskanda 1	Heavy Fuel
Sapugaskanda 2	Heavy Fuel
Kelanitissa Small Gas Turbines	Auto Diesel
GT 7 - Kelanitissa	Auto Diesel
Kelanitissa CCY	Naphtha or Diesel
Lakvijaya 1	Coal
Lakvijaya 2	Coal
Lakvijaya 3	Coal
Uthuru Janani	Heavy Fuel
Barge CEB	Heavy Fuel
KCCPS -2	Auto Diesel

Power Station	Primary Fuel
Private Thermal	
West Coast	Auto Diesel / Heavy Fuel

Major Incidents reported during the day

May 16, 2023

- 1) Power Barge unit 03 was unavailable from 21:05 hrs to 21:41 hrs due to a repair in dust collecting fan.
- 2) Sapugaskanda B unit 07 made unavailable at 19:23 hrs due to a fuel leak. Sapugaskanda B unit 07 resumed generation at 22:48 hrs.
- 3) Kelanitissa - KCCPS2 cable tripped at 01:34 hrs, due to blasting of a 220kV CT at the KCCPS2 switchyard. As a result, KCCPS2 which was operating at 105MW, got rejected from the system. Simultaneously, Power Barge Gen 02 and 04 tripped rejecting another 15MW. Kelanitissa - KCCPS2 cable is yet to be restored. Power Barge Gen 02 and 04 resumed generation by 01:54 hrs.