

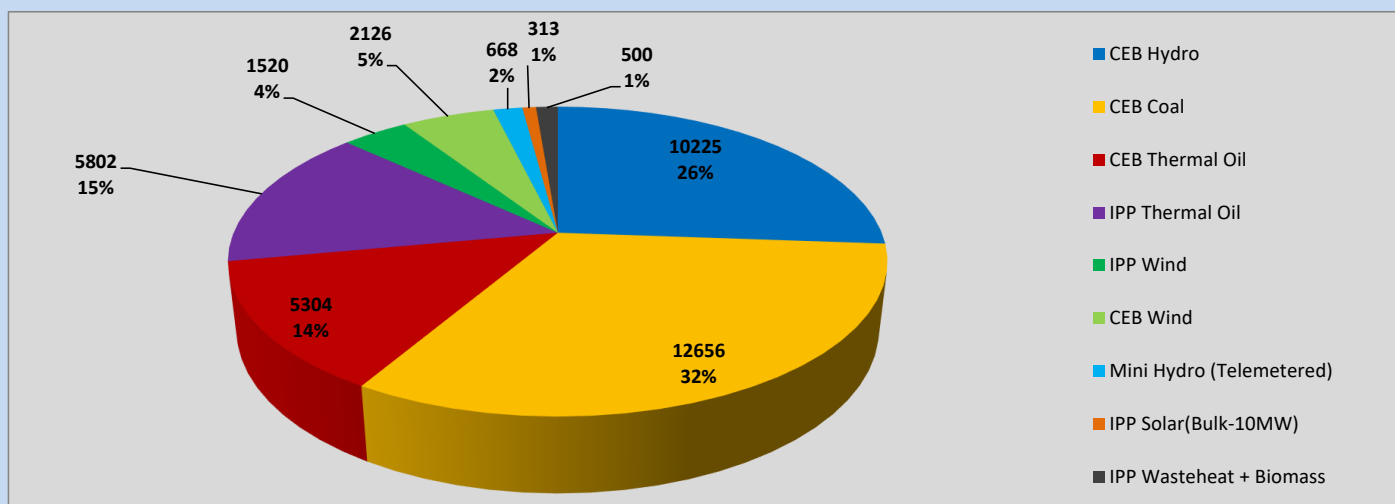
Generation and Reservoirs Statistics

May 15, 2023



PUBLIC UTILITIES COMMISSION OF SRI LANKA

Daily Generation Mix in MWh



Total Generation (Excluding estimated figures) =

39,114 MWh

Estimated figures of CEB generation report

Estimated unserved energy = 0.00 GWh

Estimated Mini Hydro (Non telemetered) = 3322 MWh

Estimated IPP Solar PV (Bulk 1-10MW) = 304 MWh

Estimated Solar Roof Top PV = 1920 MWh

Cumulative Dispatch

Following data excludes the contribution from roof top solar, non telemetered solar and mini hydro plants

For Current Month

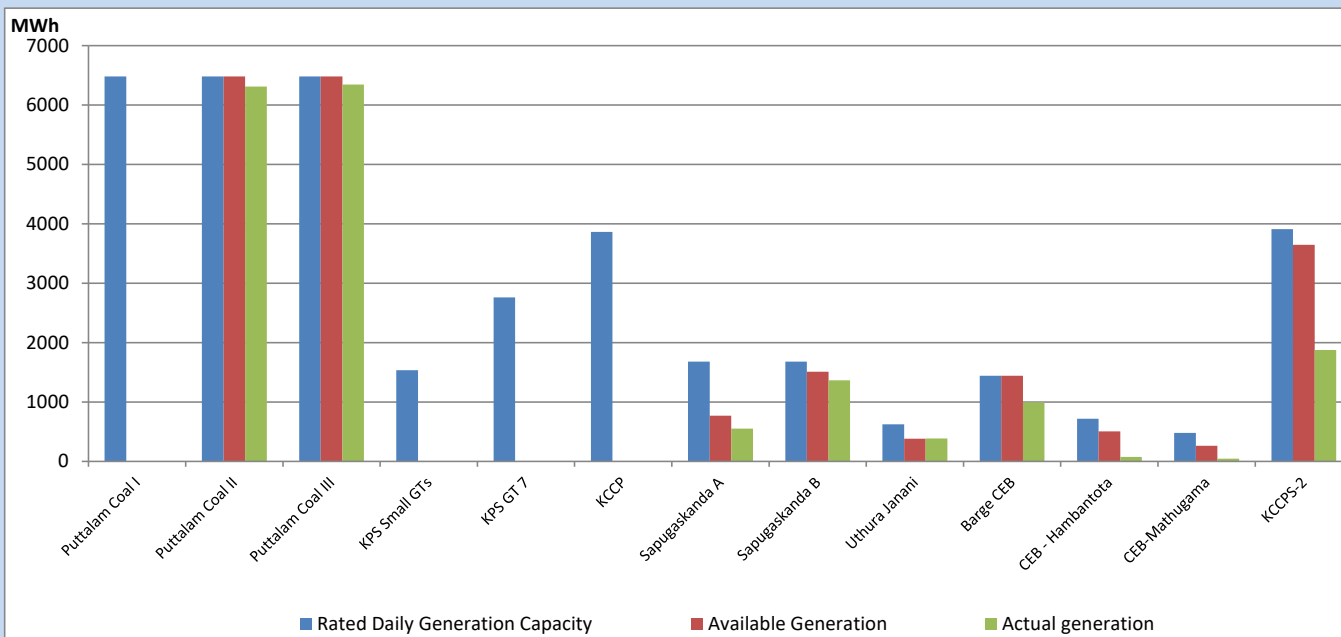
Category	Dispatch (GWh)	
CEB Hydro	123	22.87%
CEB Coal	266	49.36%
CEB Thermal Oil	61	11.23%
IPP Thermal	34	6.34%
SPP Wind	16	2.88%
CEB Wind	15	2.74%
Mini Hydro (Telemetered)	15	2.83%
IPP Solar(Bulk-10MW)	4	0.70%
IPP Wasteheat + BMP	5	1.00%
Total	539	

For Current Year

Category	Dispatch (GWh)	
CEB Hydro	1,325	26.01%
CEB Coal	2,253	44.24%
CEB Thermal Oil	716	14.05%
IPP Thermal	452	8.87%
SPP Wind	73	1.44%
CEB Wind	85	1.67%
Mini Hydro (Telemetered)	111	2.17%
IPP Solar(Bulk-10MW)	38	0.75%
IPP Wasteheat	40	0.79%
Total	5,094	

CEB owned Thermal Plant Dispatch

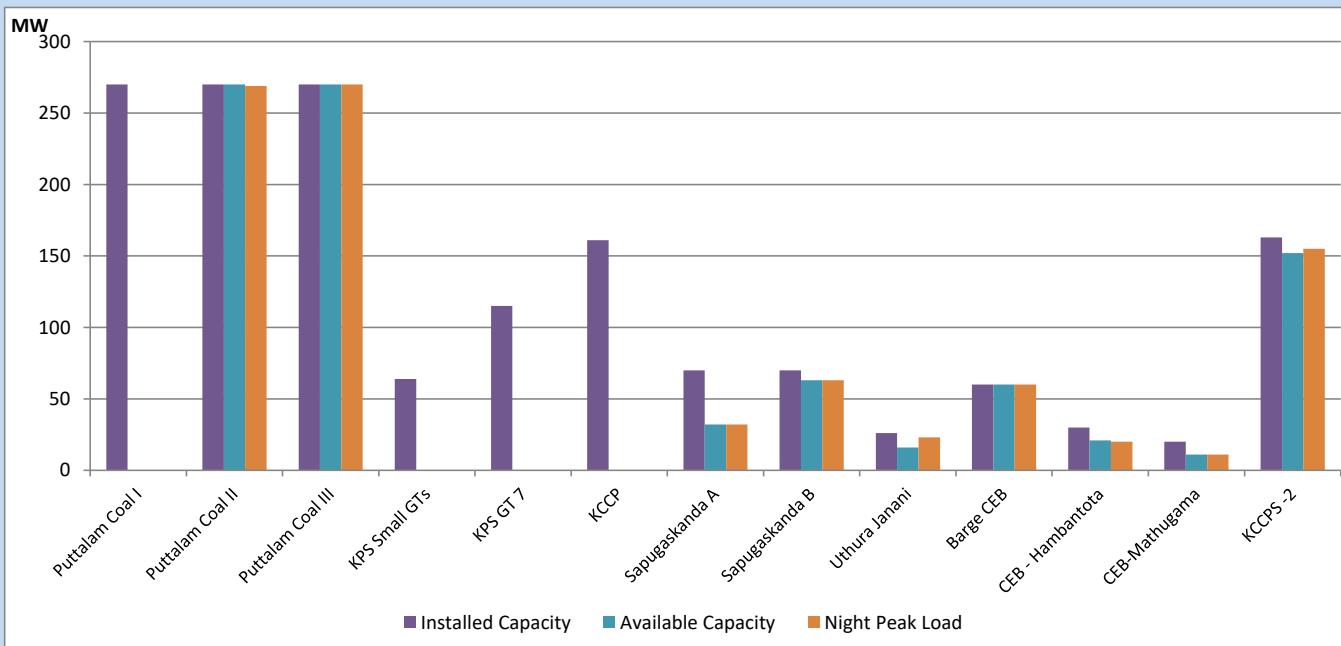
May 15, 2023



Available Generation is estimated based on plant availability at 6.00am on

May 16, 2023

CEB owned Thermal Plant Loading at the Night Peak



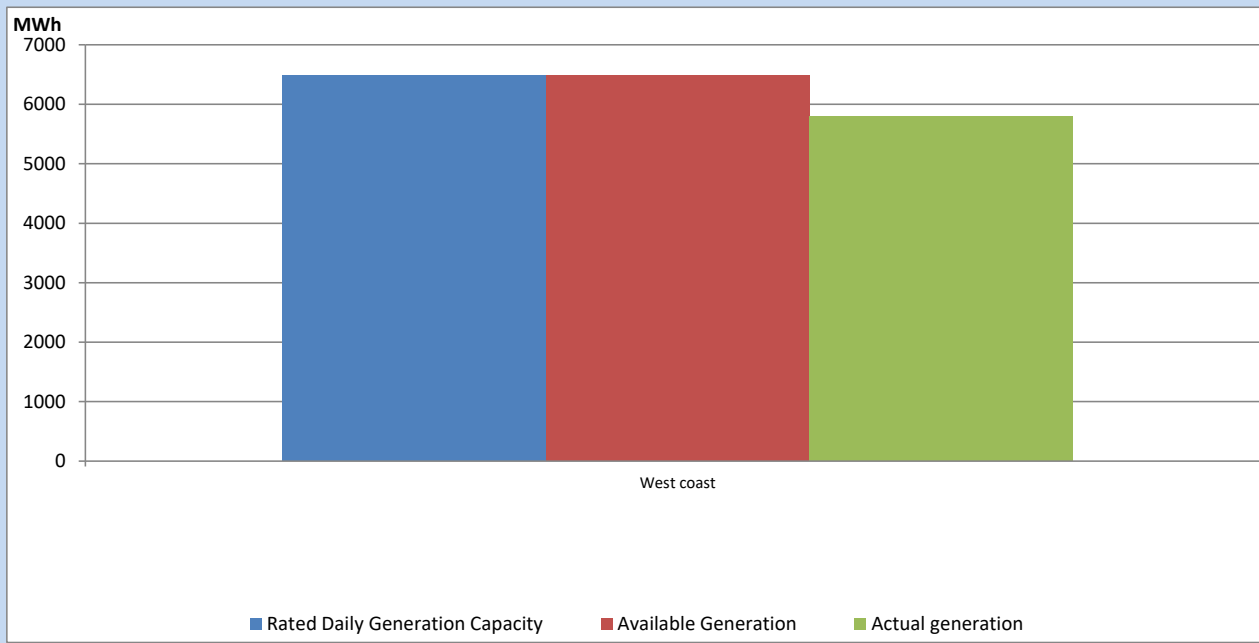
Note-

Plant availability is recorded at 6.00 am on

May 16, 2023

IPP owned Thermal Plant Dispatch

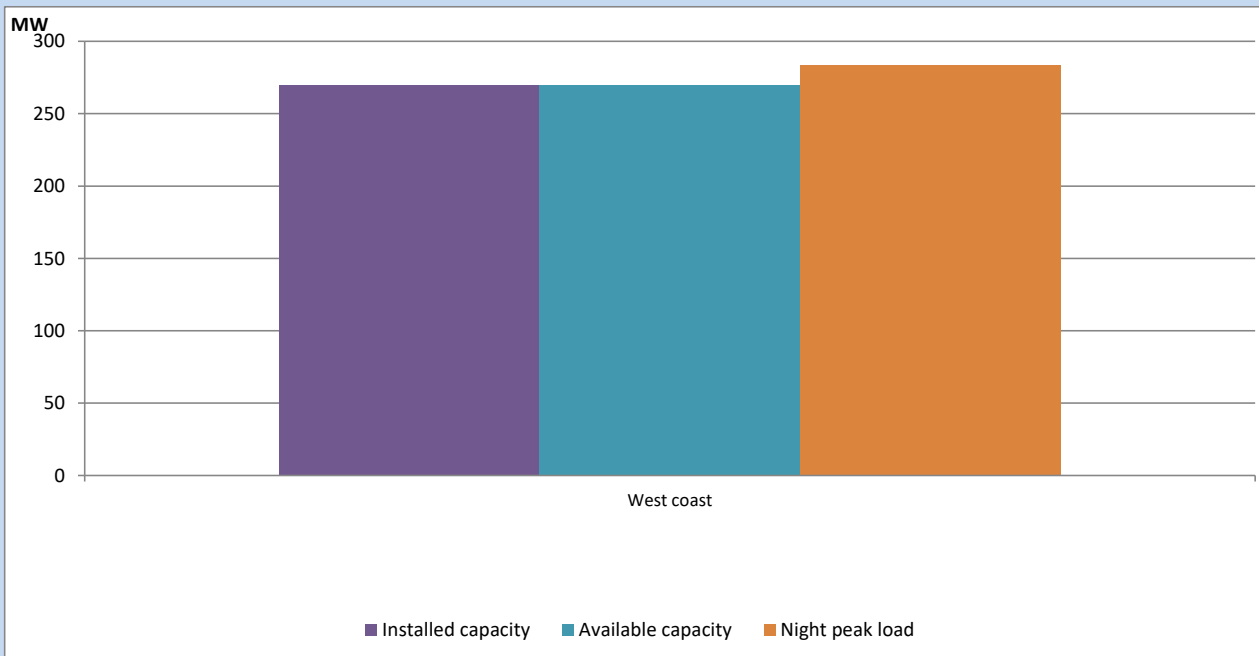
May 15, 2023



Available Generation is estimated based on plant availability at 6.00am on

May 16, 2023

IPP owned Thermal Plant Loading at the Night Peak

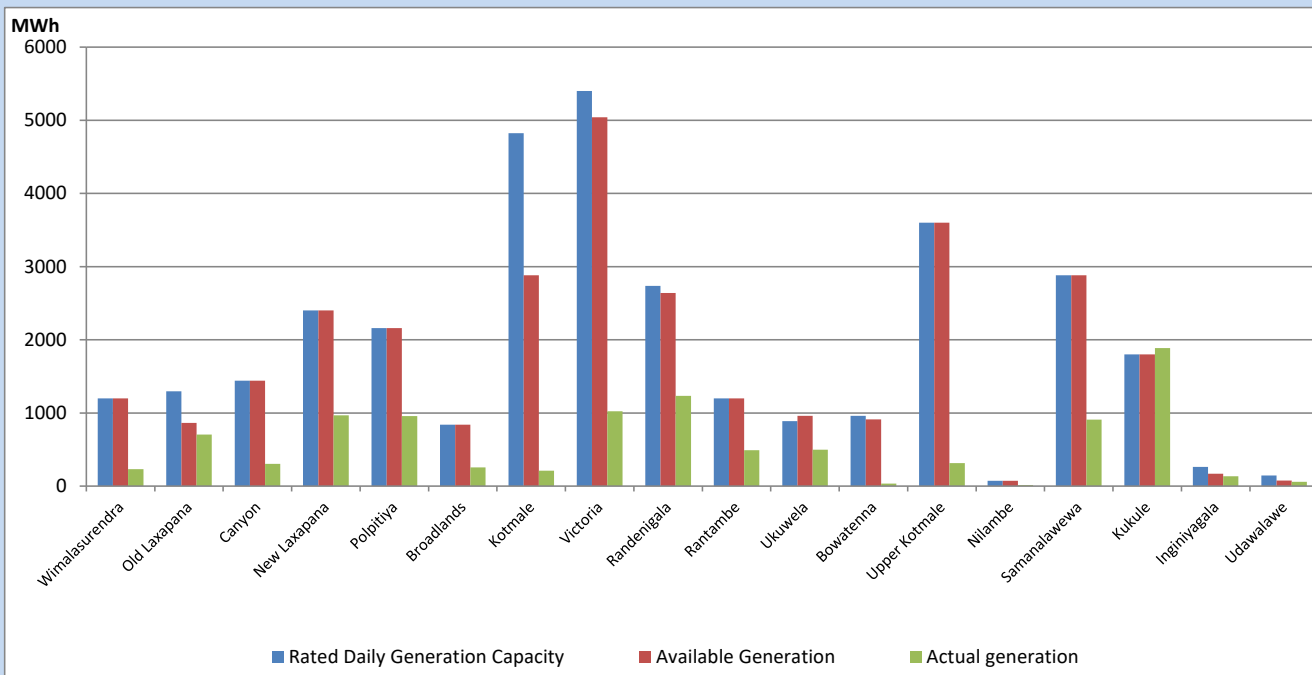


Note- Plant availability is recorded at 6.00 am on

May 16, 2023

Major Hydro Plant Dispatch

May 15, 2023

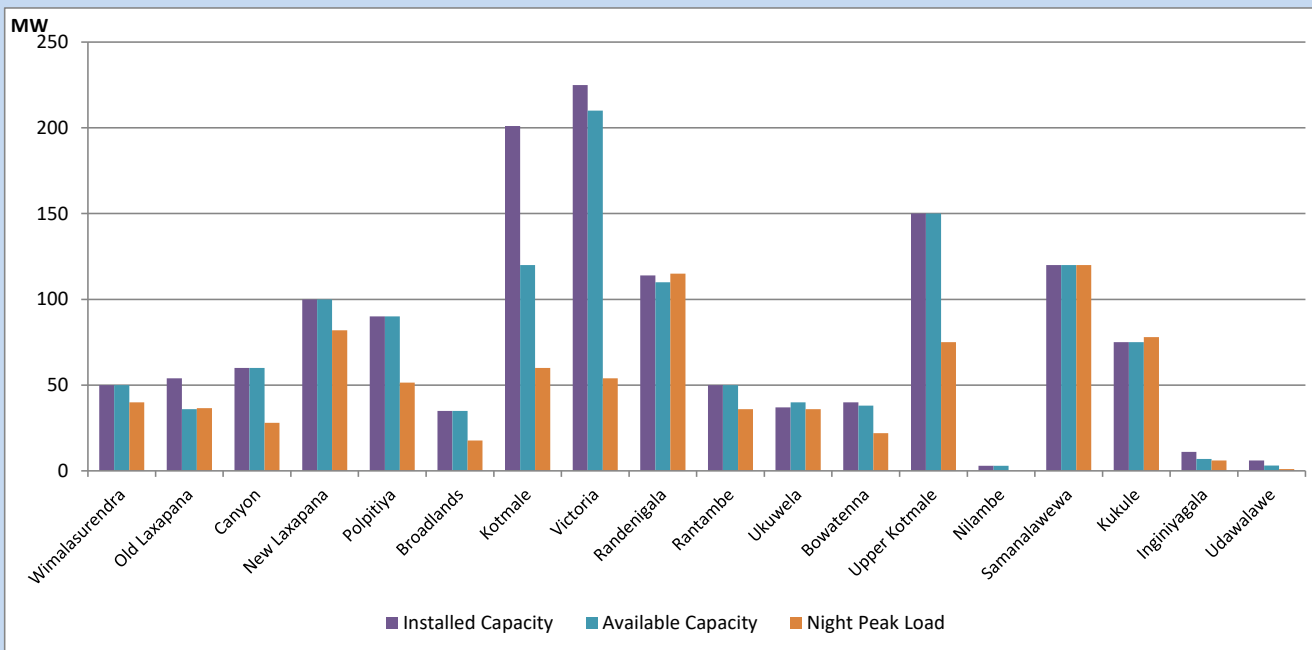


Available Generation is estimated based on plant availability at 6.00am on
Broadlands power plant is operating in the Commissioning Stage

May 16, 2023

Major Hydro Plant Loading at Night Peak

May 15, 2023



Note- Plant availability is recorded at 6.00 am on
Broadlands power plant is operating in the Commissioning Stage

May 16, 2023

Summary of Major Plant performance

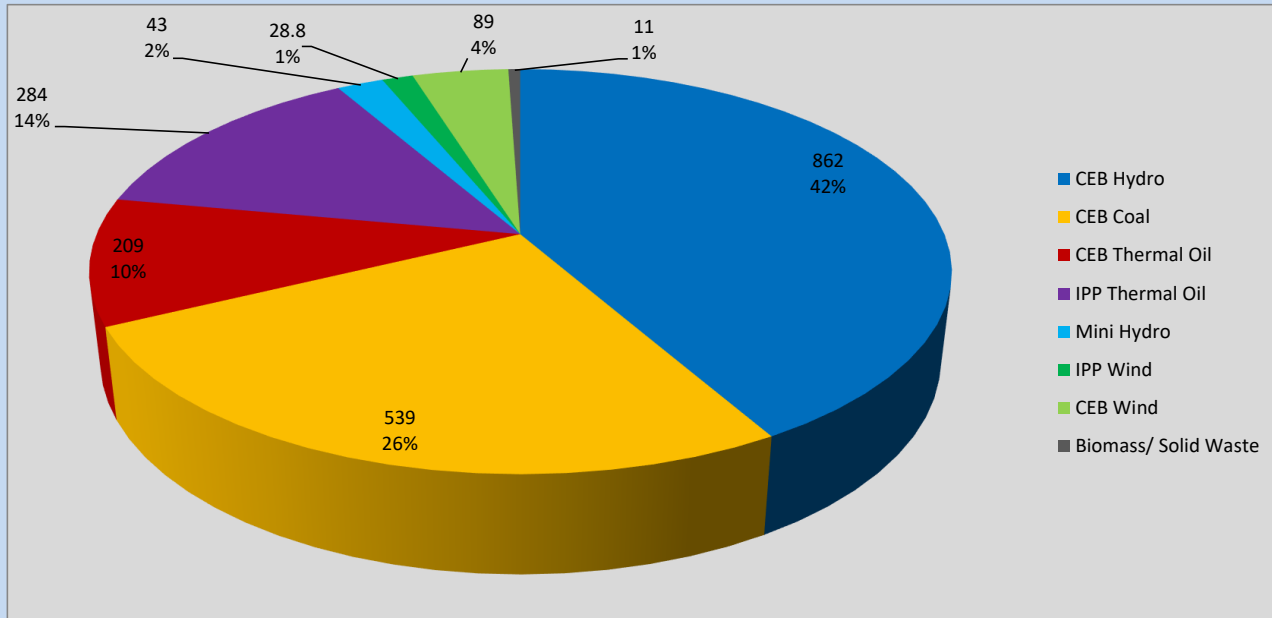
Plant	Installed Capacity	Plant Availability	Night peak Load	Plant Dispatch
	(MW)	(MW)	(MW)	(MWh)
Wimalasurendra	50	50	40	231
Old Laxapana	54	36	37	706
Canyon	60	60	28	304
New Laxapana	100	100	82	967
Polpitiya	90	90	51	956
Broadlands	35	35	18	256
Kotmale	201	120	60	210
Victoria	225	210	54	1,022
Randenigala	114	110	115	1,234
Rantambe	50	50	36	492
Ukuwela	37	40	36	499
Bowatenna	40	38	22	36
Upper Kotmale	150	150	75	313
Nilambe	3	3	0	13
Samanalawewa	120	120	120	908
Kukule	75	75	78	1,885
Inginiyagala	11	7	6	133
Udawalawe	6	3	1	60
Puttalam Coal I	270	0	0	0
Puttalam Coal II	270	270	269	6,309
Puttalam Coal III	270	270	270	6,347
KPS Small GTs	64	0	0	0
KPS GT 7	115	0	0	0
KCCP	161	0	0	0
Sapugaskanda A	70	32	32	553
Sapugaskanda B	70	63	63	1,367
Uthura Janani	26	16	23	388
Barge CEB	60	60	60	997
CEB-Hambantota	30	21	20	75
CEB-Mathugama	20	11	11	47
ACE Matara	24	0	0	0
Asia Power	50	0	0	0
KCCPS -2	163	152	155	1,877
West Coast	270	270	284	5,802
Nothern Power	36	0	0	0
ACE Embilipitiya	93	0	0	0
Total	3,483	2,462	2,218	39,114

Plant availability is the availability recorded at 6 am on

May 16, 2023

Contribution to the Night Peak in MW

May 15, 2023

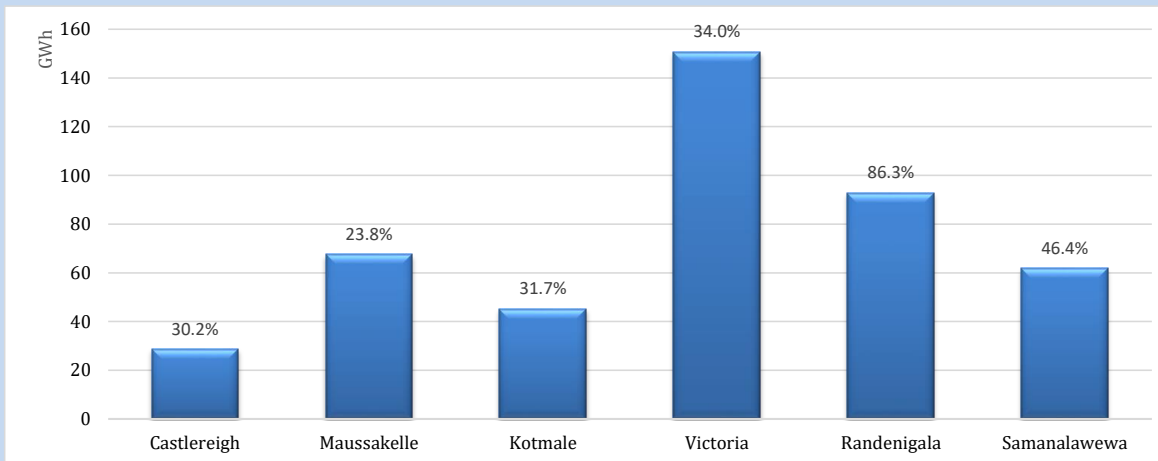


Night Peak*	2,221 MW
Day Peak	1,941 MW
Minimum Demand	1,630 MW

Above figures are excluding contribution from roof top solar, non telemetered solar and mini hydro plants

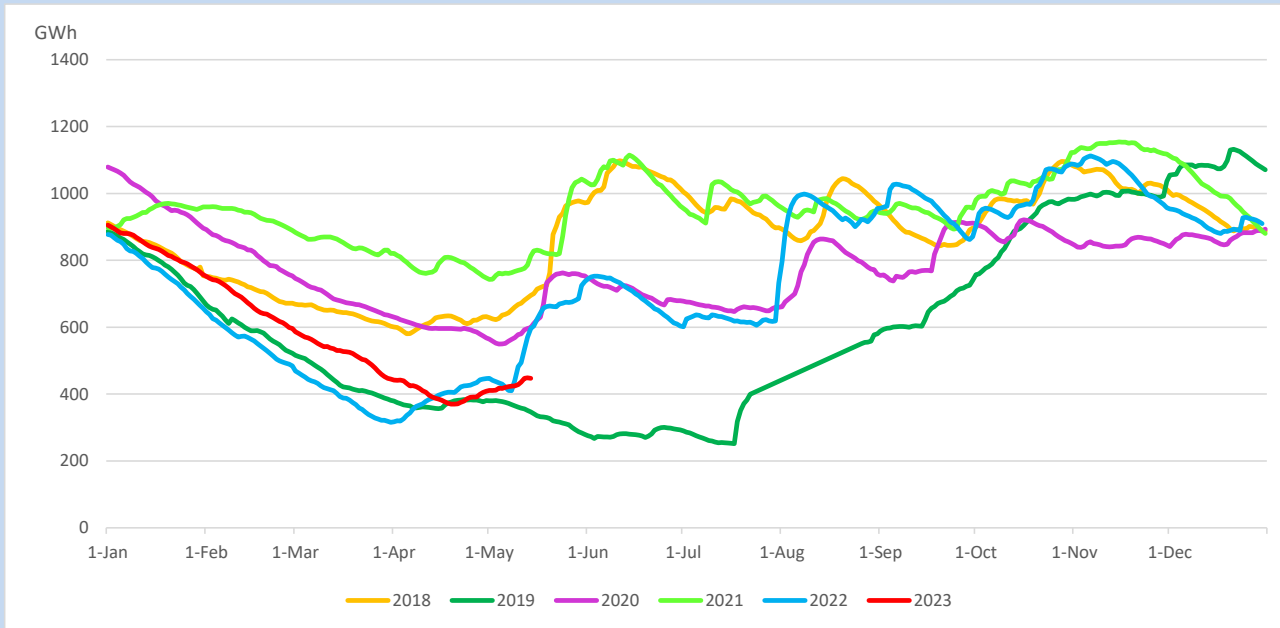
Reservoir Levels -

as at 06.00 Hr on May 16, 2023

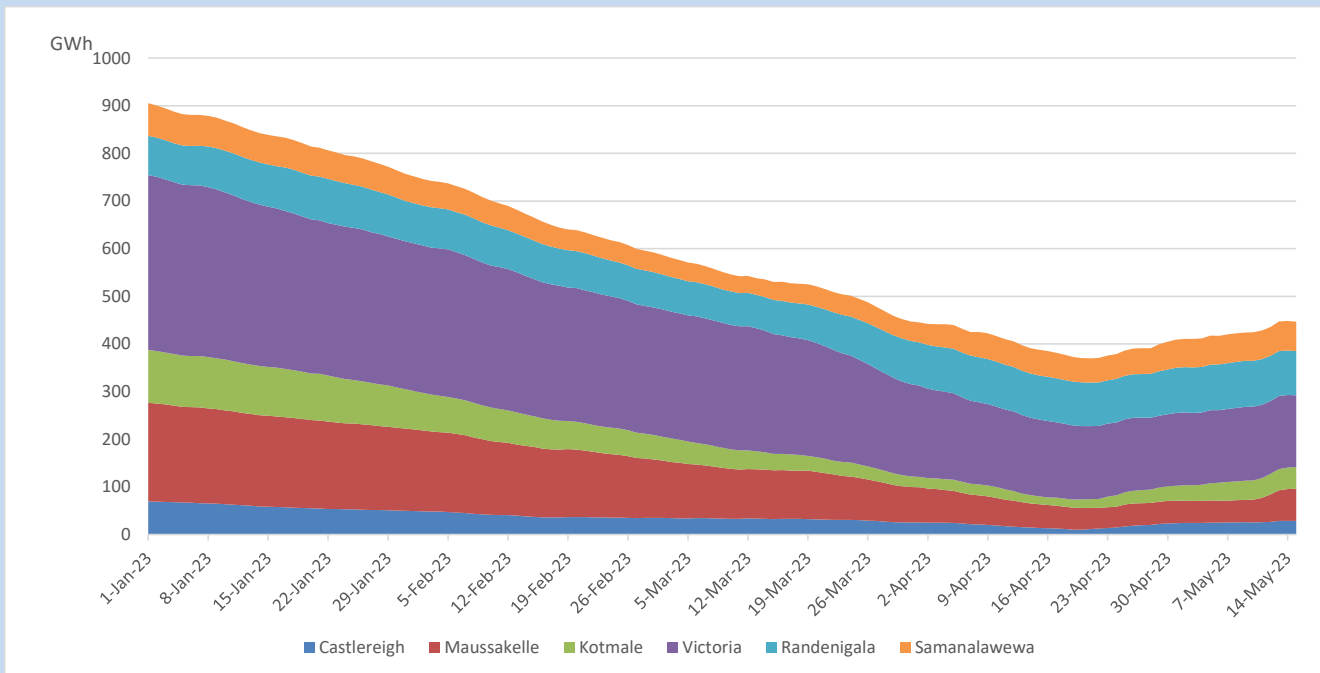


Total Reservoir Level	446.8 GWh
% of Total capacity	37.1%

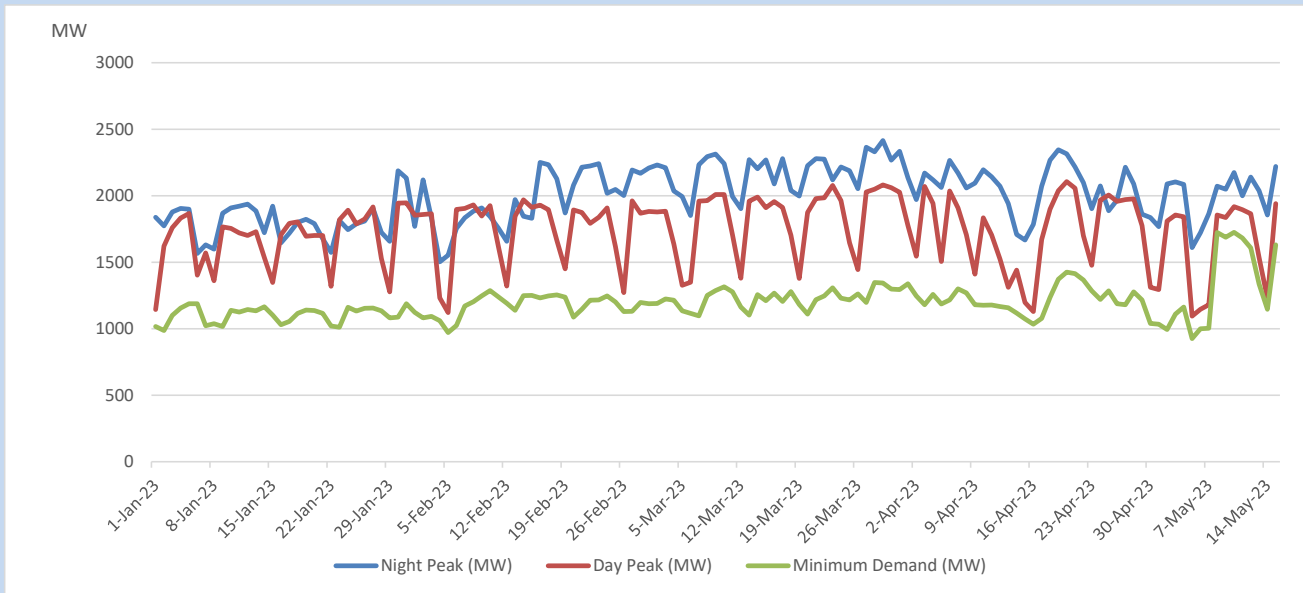
Comparison of Total Reservoir Storage Levels with Past Years



Variation of Major Hydro Reservoir Levels in the current year (GWh)



Variation of Demand during the current year

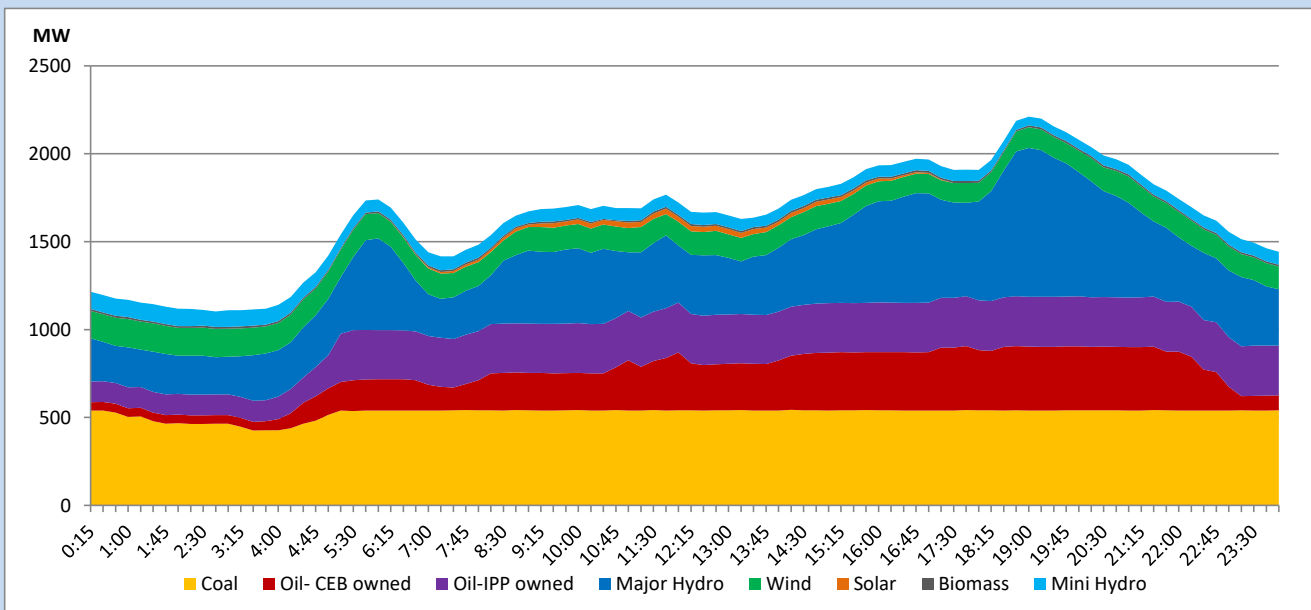


The above figures are excluding contribution from roof top solar, non telemetered solar and mini hydro plants

Daily Load Curve

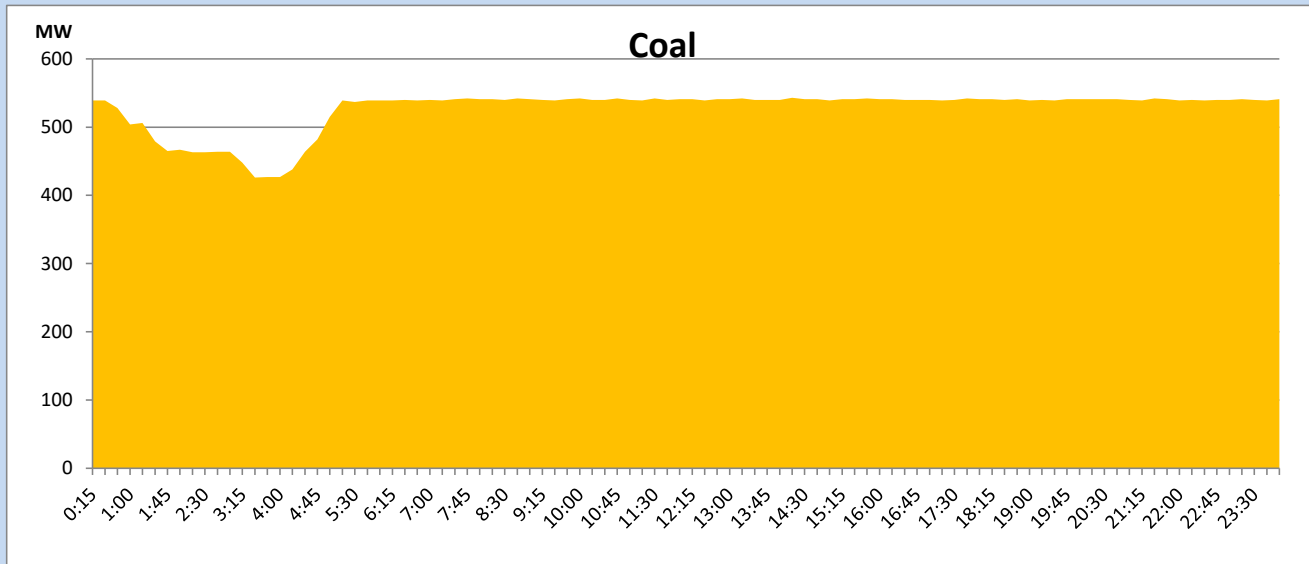
May 15, 2023

Solar and wind data is based on Telemetered Power Stations only



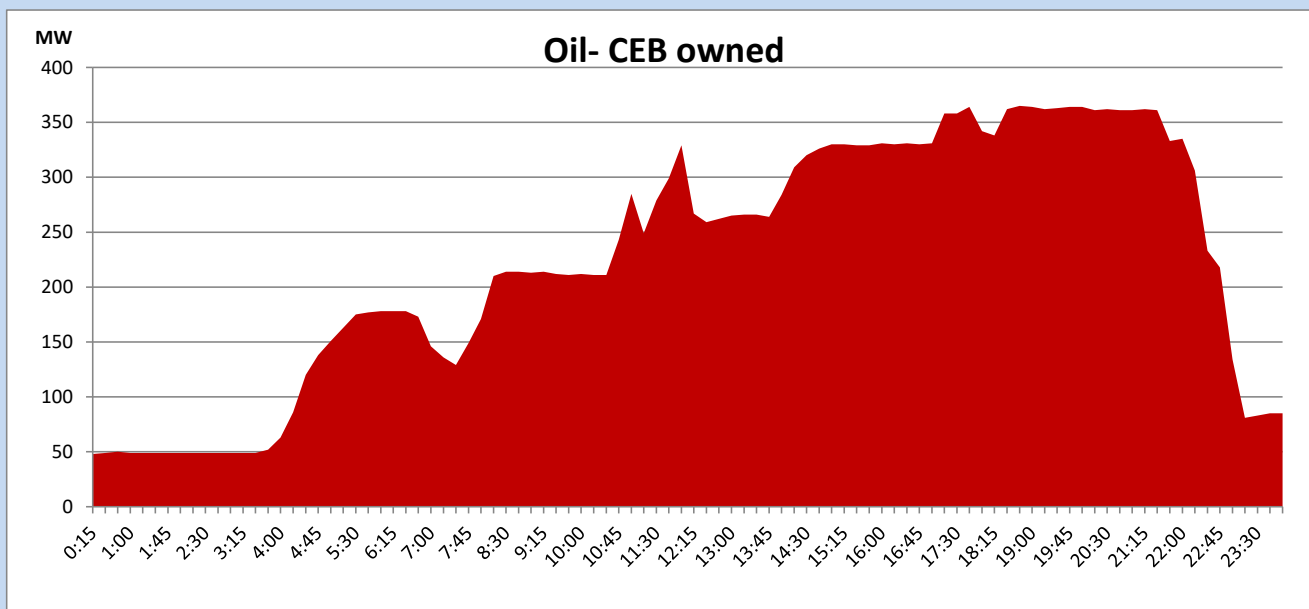
Coal Generation during

May 15, 2023



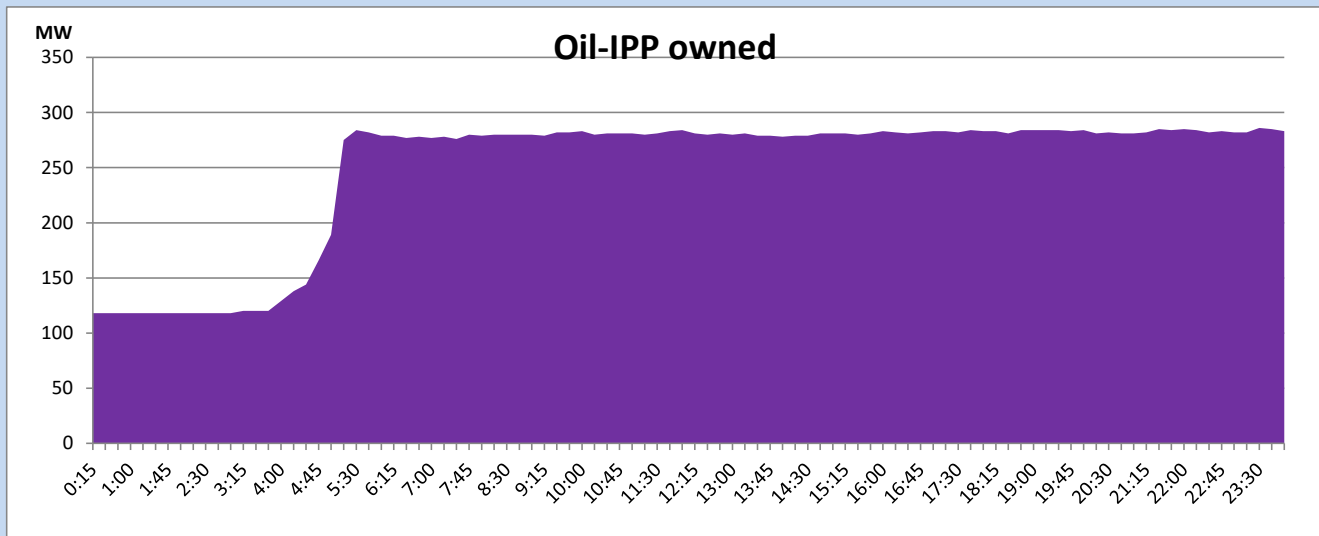
CEB Oil Plant Generation during

May 15, 2023



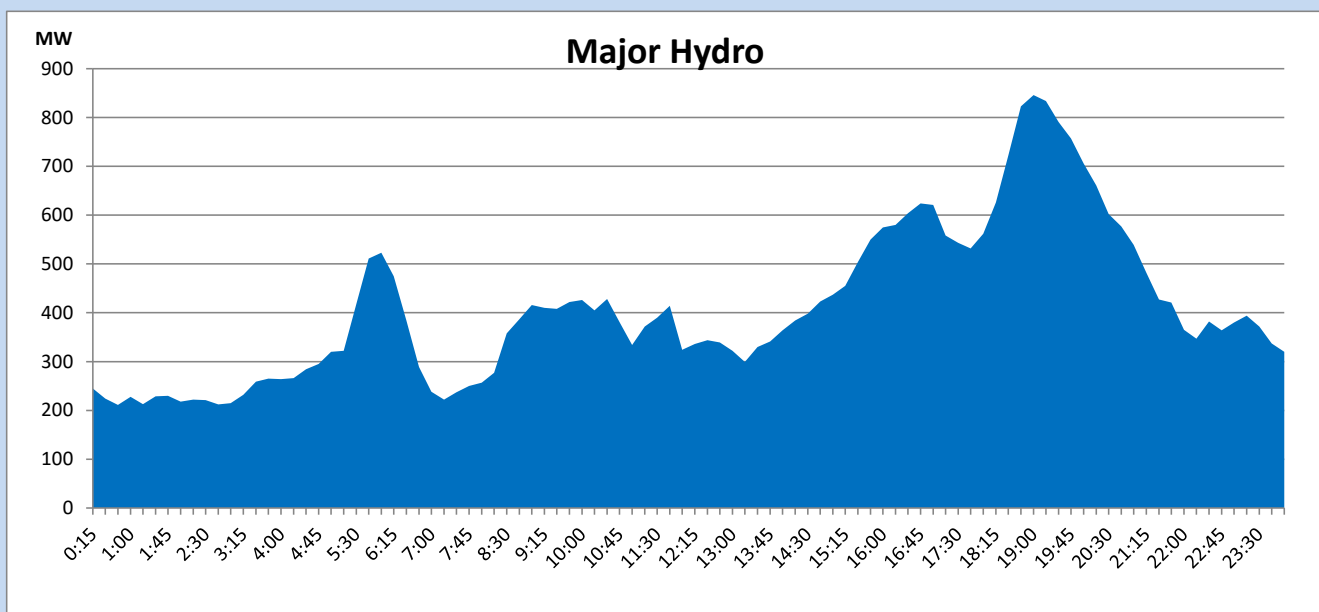
IPP Oil Plant Generation during

May 15, 2023



Major Hydro Generation during

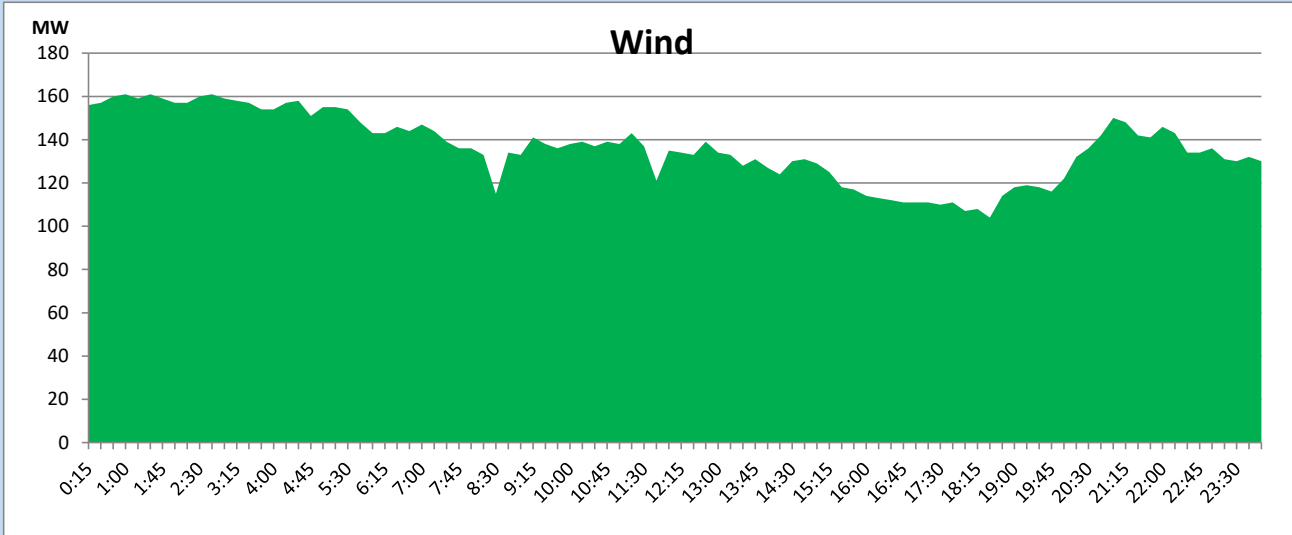
May 15, 2023



Wind Generation during

May 15, 2023

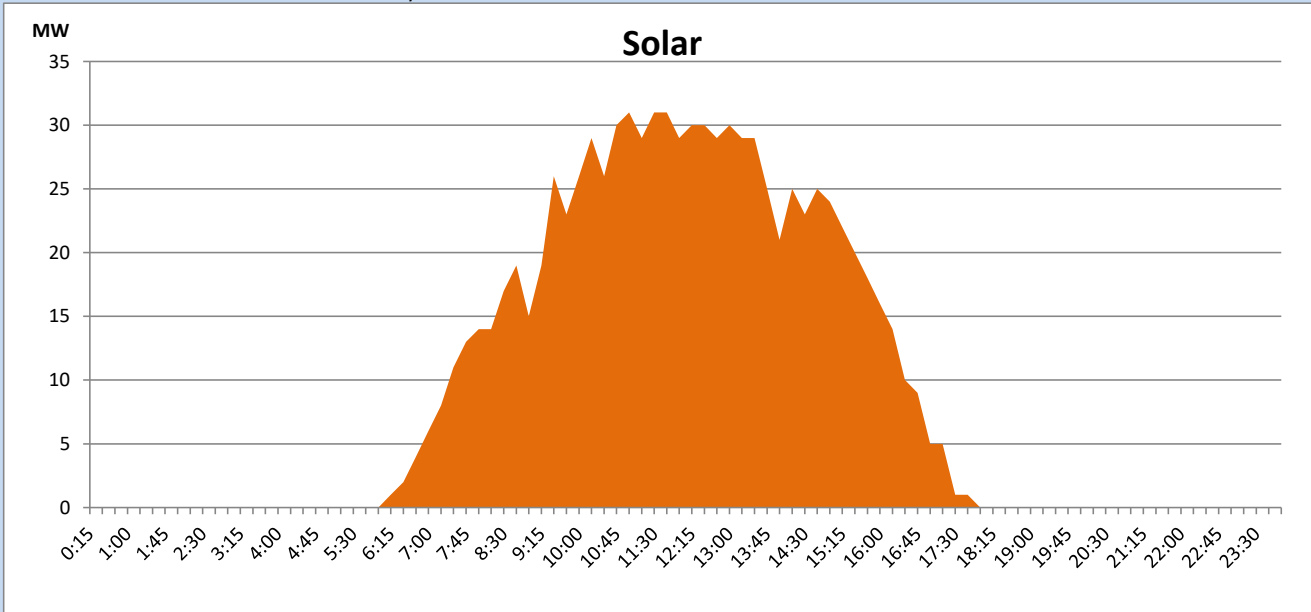
Based on Telemetered Power Stations only



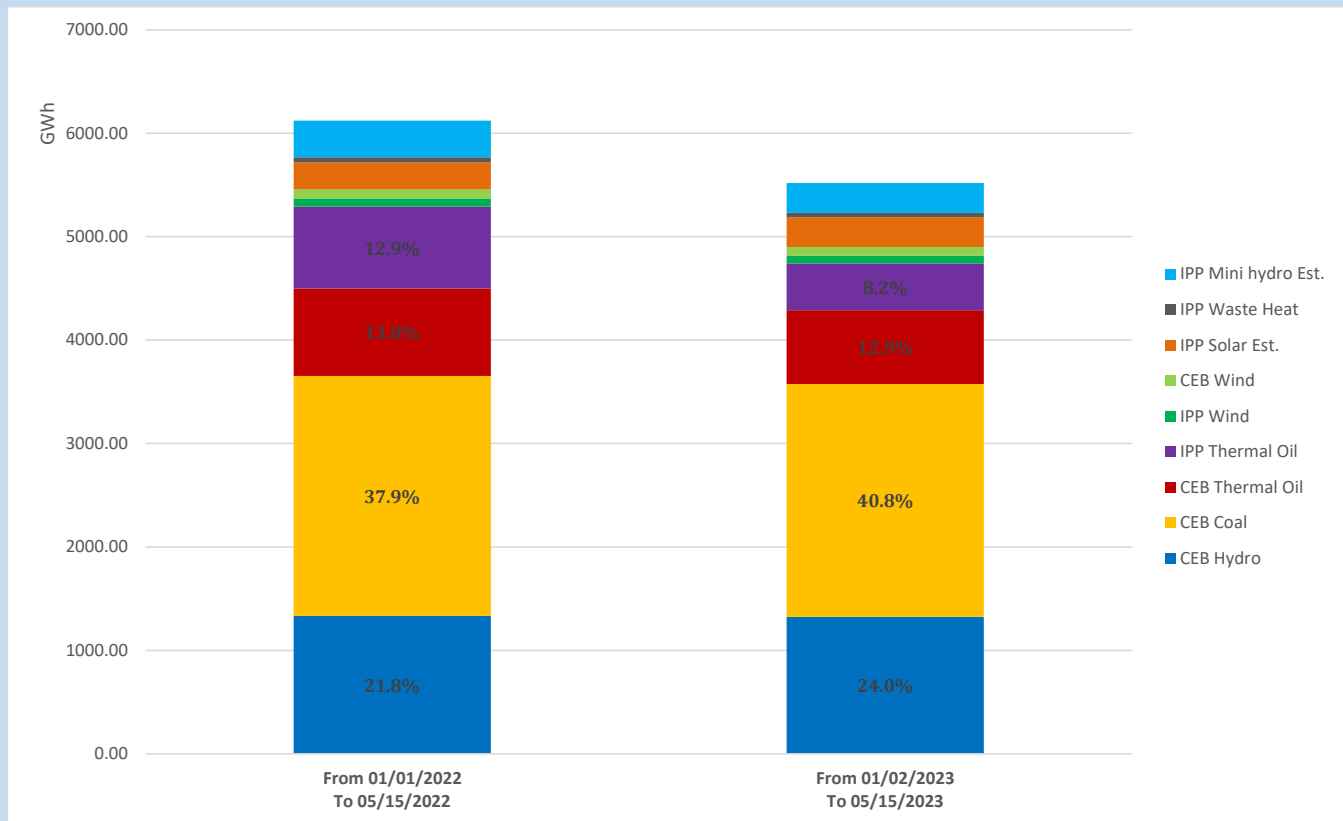
Solar Generation during

May 15, 2023

Based on Telemetered Power Stations only



Cumulative Dispatch Comparison with Last Year



The above figures are including contribution from roof top solar, non telemetered solar and mini hydro plants

Thermal Plant Fuel types

Power Station	Primary Fuel
CEB Thermal	
Sapugaskanda 1	Heavy Fuel
Sapugaskanda 2	Heavy Fuel
Kelanitissa Small Gas Turbines	Auto Diesel
GT 7 - Kelanitissa	Auto Diesel
Kelanitissa CCY	Naphtha or Diesel
Lakvijaya 1	Coal
Lakvijaya 2	Coal
Lakvijaya 3	Coal
Uthuru Janani	Heavy Fuel
Barge CEB	Heavy Fuel
KCCPS -2	Auto Diesel

Power Station	Primary Fuel
Private Thermal	
West Coast	Auto Diesel / Heavy Fuel

Major Incidents reported during the day

May 15, 2023

1) Hambanthota supplementary power plant feeder (Feeder 07) tripped at 17:53hrs rejecting 24MW from the system. The plant resumed generation at 18:13hrs along with restoration of the feeder.

2) Kukule pond spilling stopped at 05:45hrs (16.05.23).