

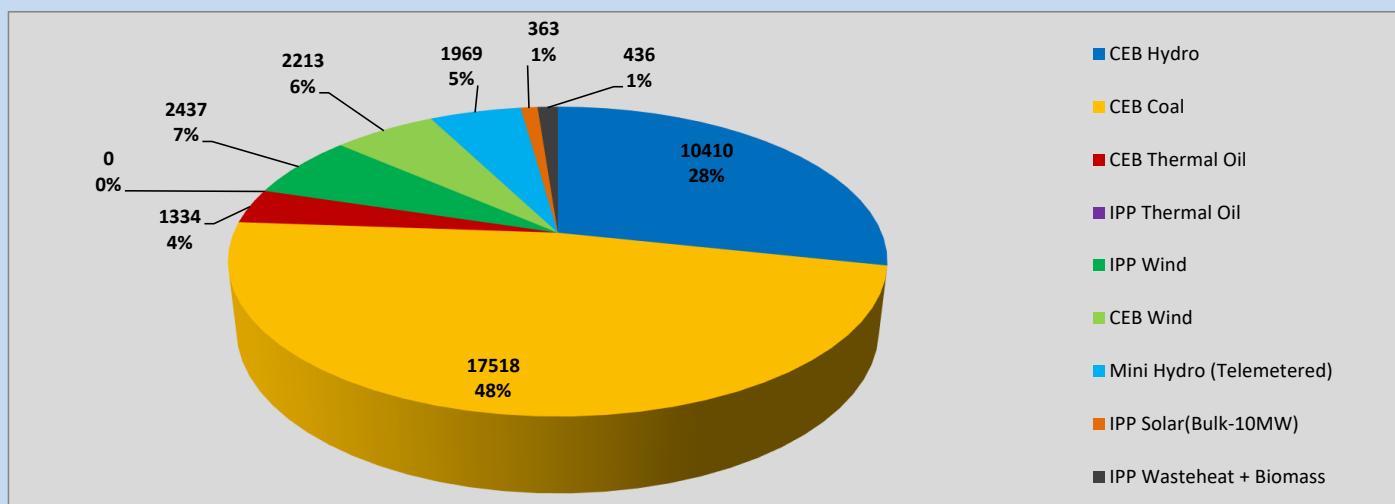
# Generation and Reservoirs Statistics

May 13, 2023



PUBLIC UTILITIES COMMISSION OF SRI LANKA

## Daily Generation Mix in MWh



Total Generation (Excluding estimated figures) =

36,680 MWh

### Estimated figures of CEB generation report

Estimated unserved energy = 0.00 GWh

Estimated Mini Hydro (Non telemetered) = 2021MWh

Estimated IPP Solar PV (Bulk 1-10MW) = 304 MWh

Estimated Solar Roof Top PV = 1920 MWh

## Cumulative Dispatch

Following data excludes the contribution from roof top solar, non telemetered solar and mini hydro plants

### For Current Month

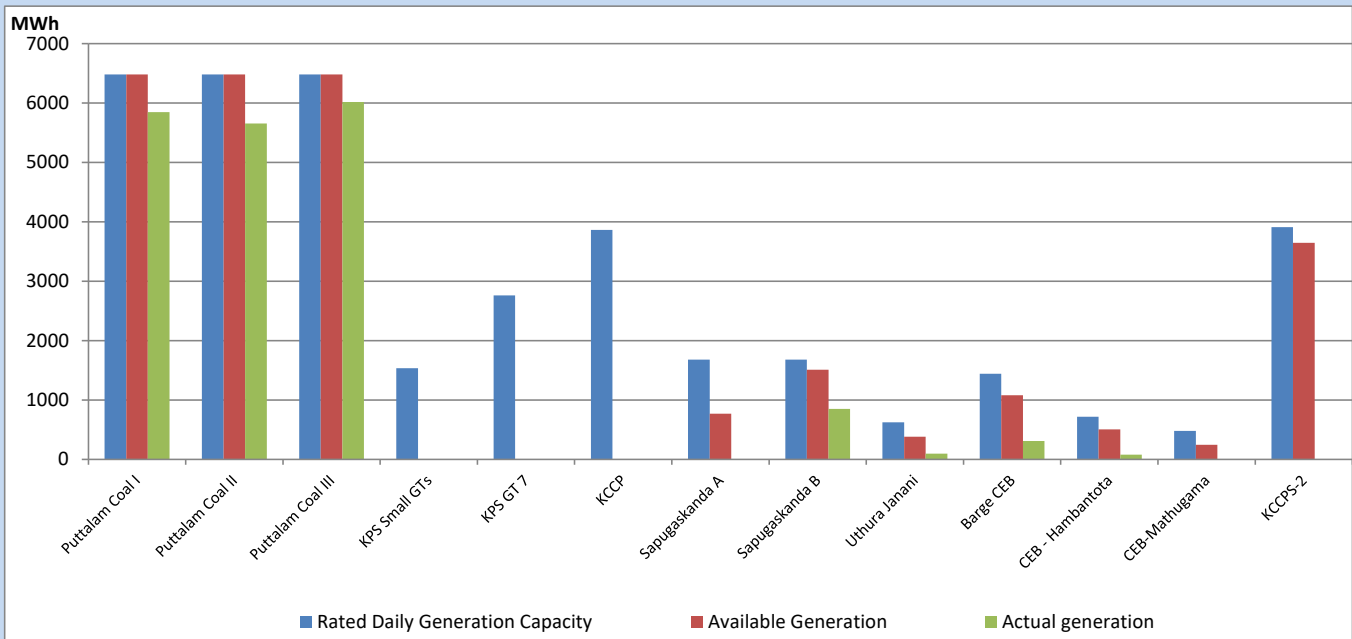
Category	Dispatch (GWh)	
CEB Hydro	103	21.97%
CEB Coal	239	51.16%
CEB Thermal Oil	54	11.56%
IPP Thermal	28	5.88%
SPP Wind	12	2.55%
CEB Wind	10	2.23%
Mini Hydro (Telemetered)	14	3.00%
IPP Solar (Bulk-10MW)	3	0.70%
IPP Wasteheat + BMP	4	0.95%
<b>Total</b>	<b>468</b>	

### For Current Year

Category	Dispatch (GWh)	
CEB Hydro	1,304	25.97%
CEB Coal	2,226	44.33%
CEB Thermal Oil	709	14.12%
IPP Thermal	445	8.86%
SPP Wind	70	1.39%
CEB Wind	81	1.60%
Mini Hydro (Telemetered)	109	2.18%
IPP Solar (Bulk-10MW)	38	0.75%
IPP Wasteheat	39	0.78%
<b>Total</b>	<b>5,022</b>	

## CEB owned Thermal Plant Dispatch

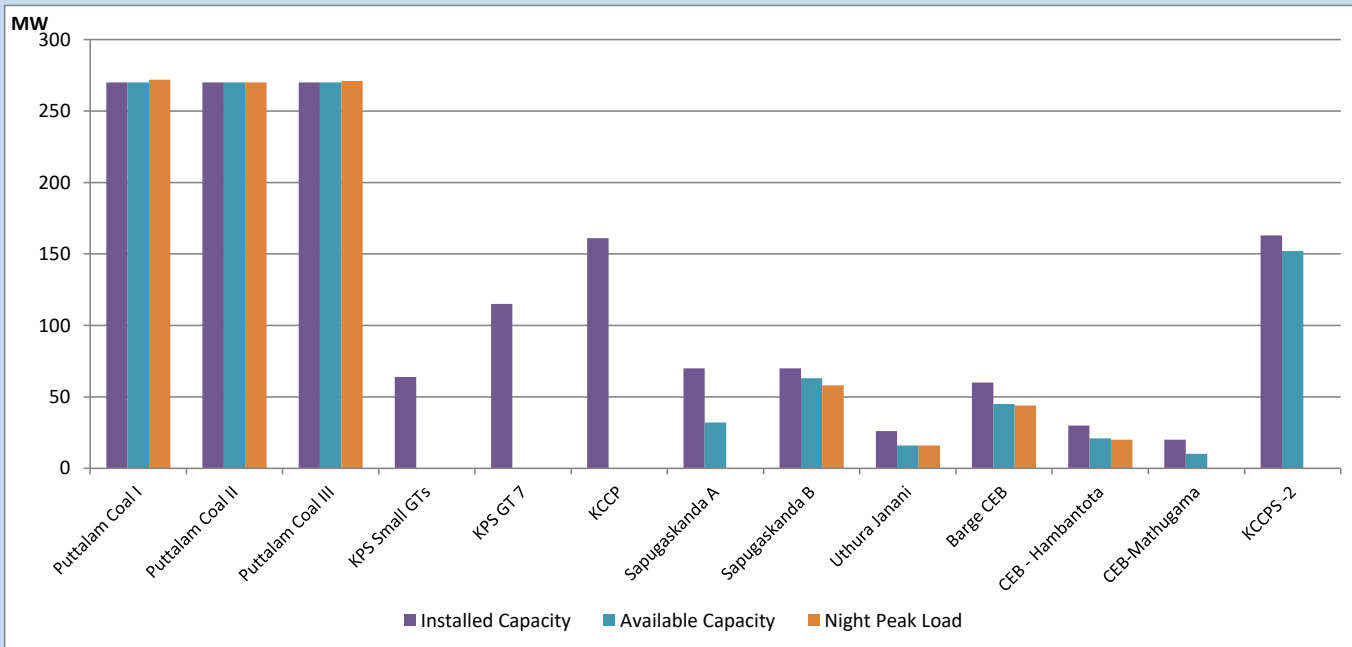
May 13, 2023



Available Generation is estimated based on plant availability at 6.00am on

May 14, 2023

## CEB owned Thermal Plant Loading at the Night Peak



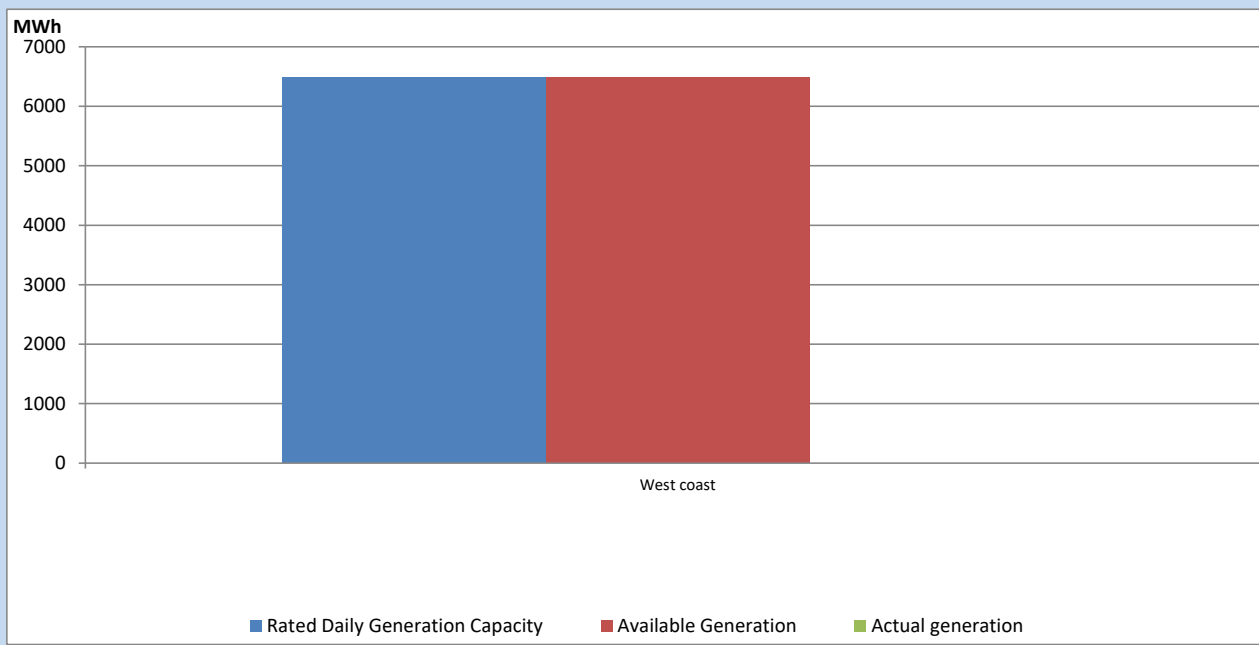
Note-

Plant availability is recorded at 6.00 am on

May 14, 2023

## IPP owned Thermal Plant Dispatch

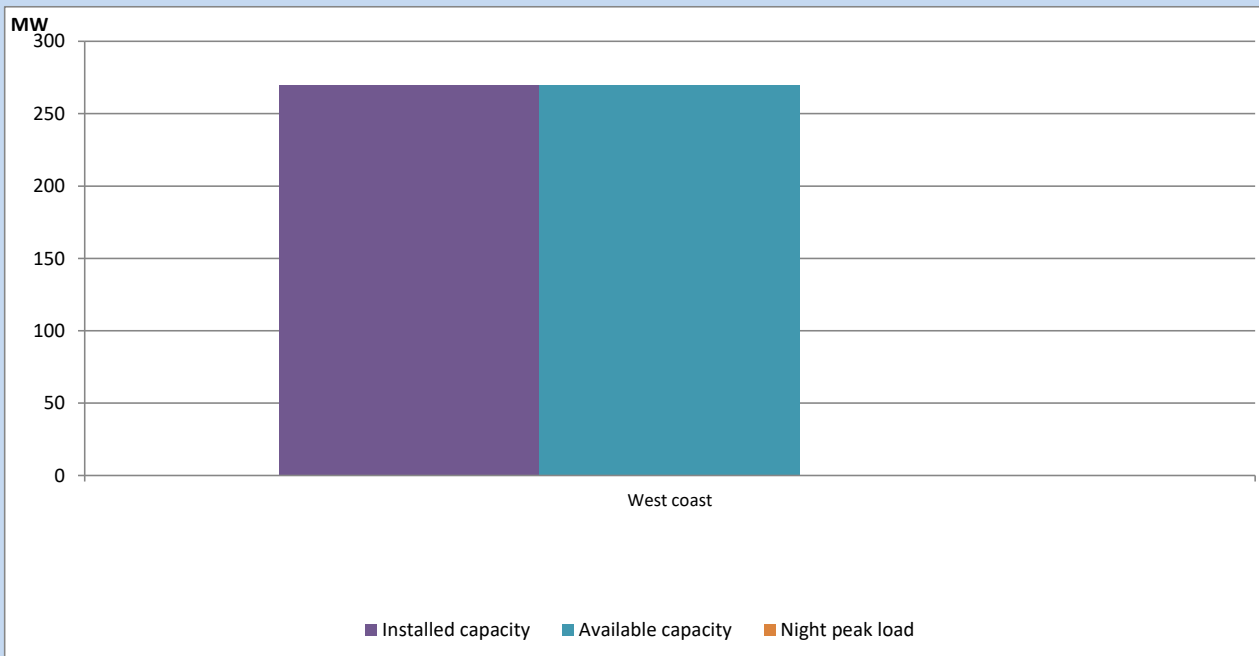
May 13, 2023



Available Generation is estimated based on plant availability at 6.00am on

May 14, 2023

## IPP owned Thermal Plant Loading at the Night Peak

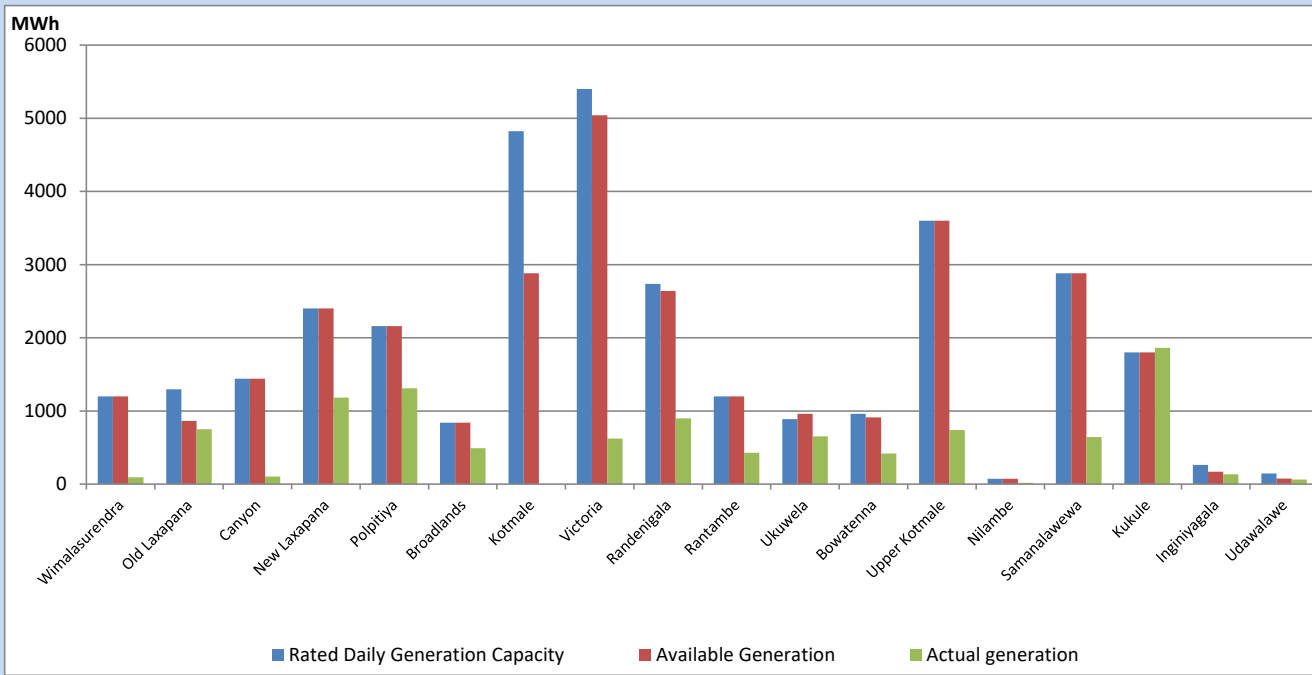


Note- Plant availability is recorded at 6.00 am on

May 14, 2023

## Major Hydro Plant Dispatch

May 13, 2023

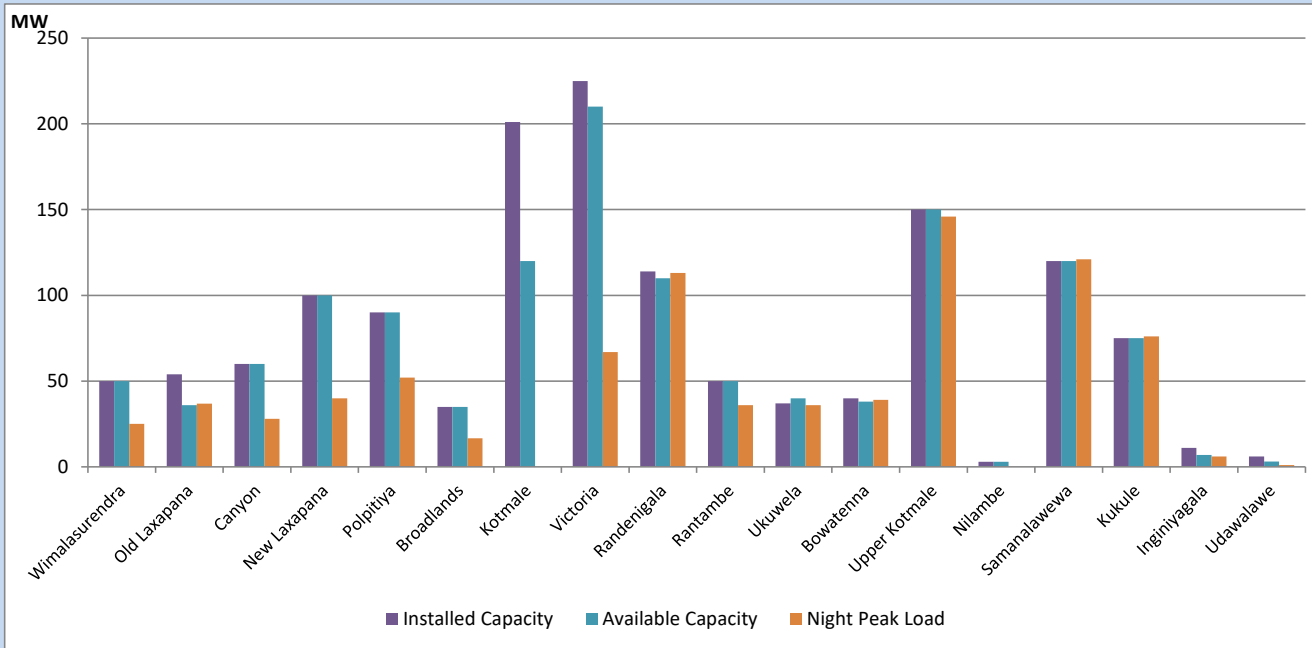


Available Generation is estimated based on plant availability at 6.00am on  
Broadlands power plant is operating in the Commissioning Stage

May 14, 2023

## Major Hydro Plant Loading at Night Peak

May 13, 2023



Note- Plant availability is recorded at 6.00 am on  
Broadlands power plant is operating in the Commissioning Stage

May 14, 2023

## Summary of Major Plant performance

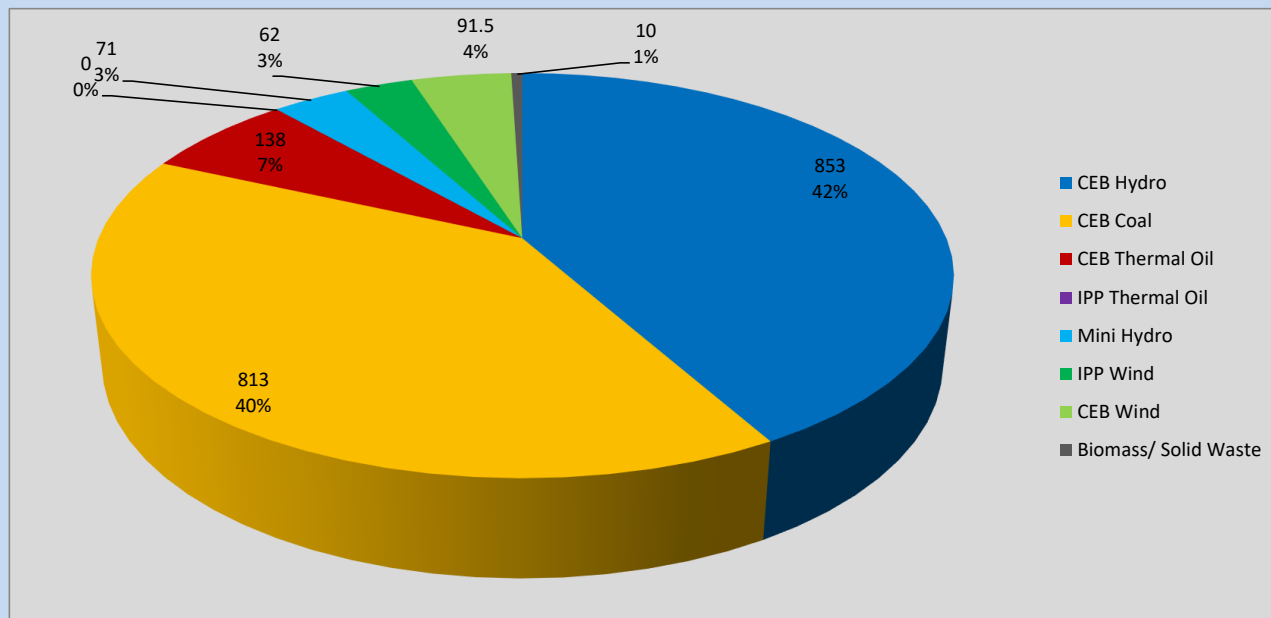
Plant	Installed Capacity	Plant Availability	Night peak Load	Plant Dispatch
	(MW)	(MW)	(MW)	(MWh)
Wimalasurendra	50	50	25	94
Old Laxapana	54	36	37	750
Canyon	60	60	28	104
New Laxapana	100	100	40	1,180
Polpitiya	90	90	52	1,308
Broadlands	35	35	17	491
Kotmale	201	120	0	0
Victoria	225	210	67	623
Randenigala	114	110	113	897
Rantambe	50	50	36	430
Ukuwela	37	40	36	653
Bowatenna	40	38	39	418
Upper Kotmale	150	150	146	740
Nilambe	3	3	0	17
Samanalawewa	120	120	121	642
Kukule	75	75	76	1,864
Inginiyagala	11	7	6	136
Udawalawe	6	3	1	63
Puttalam Coal I	270	270	272	5,847
Puttalam Coal II	270	270	270	5,655
Puttalam Coal III	270	270	271	6,016
KPS Small GTs	64	0	0	0
KPS GT 7	115	0	0	0
KCCP	161	0	0	0
Sapugaskanda A	70	32	0	0
Sapugaskanda B	70	63	58	850
Uthura Janani	26	16	16	96
Barge CEB	60	45	44	310
CEB-Hambantota	30	21	20	78
CEB-Mathugama	20	10	0	0
ACE Matara	24	0	0	0
Asia Power	50	0	0	0
KCCPS -2	163	152	0	0
West Coast	270	270	0	0
Nothern Power	36	0	0	0
ACE Embilipitiya	93	0	0	0
<b>Total</b>	<b>3,483</b>	<b>2,716</b>	<b>2,025</b>	<b>36,680</b>

Plant availability is the availability recorded at 6 am on

May 14, 2023

## Contribution to the Night Peak in MW

May 13, 2023

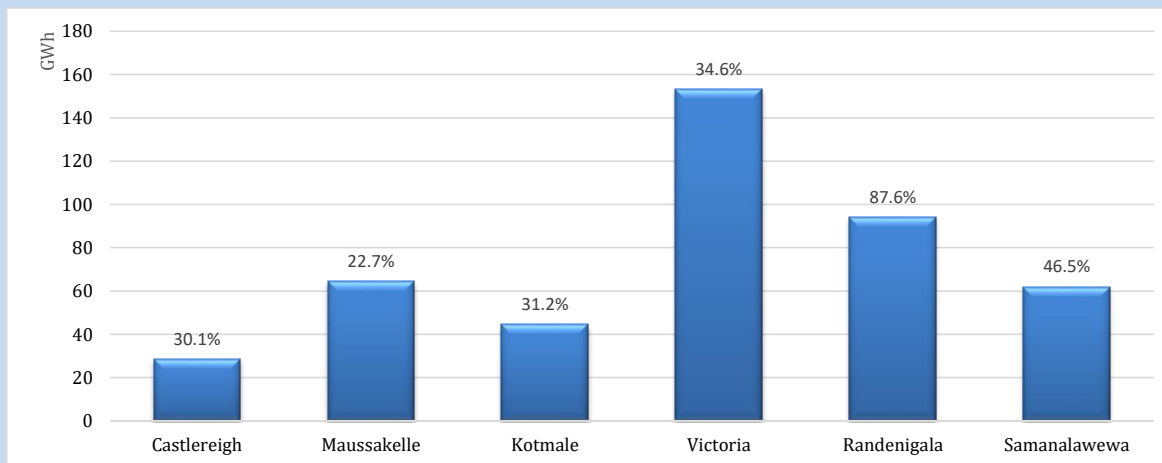


Night Peak*	2,038 MW
Day Peak	1,536 MW
Minimum Demand	1,336 MW

Above figures are excluding contribution from roof top solar, non telemetered solar and mini hydro plants

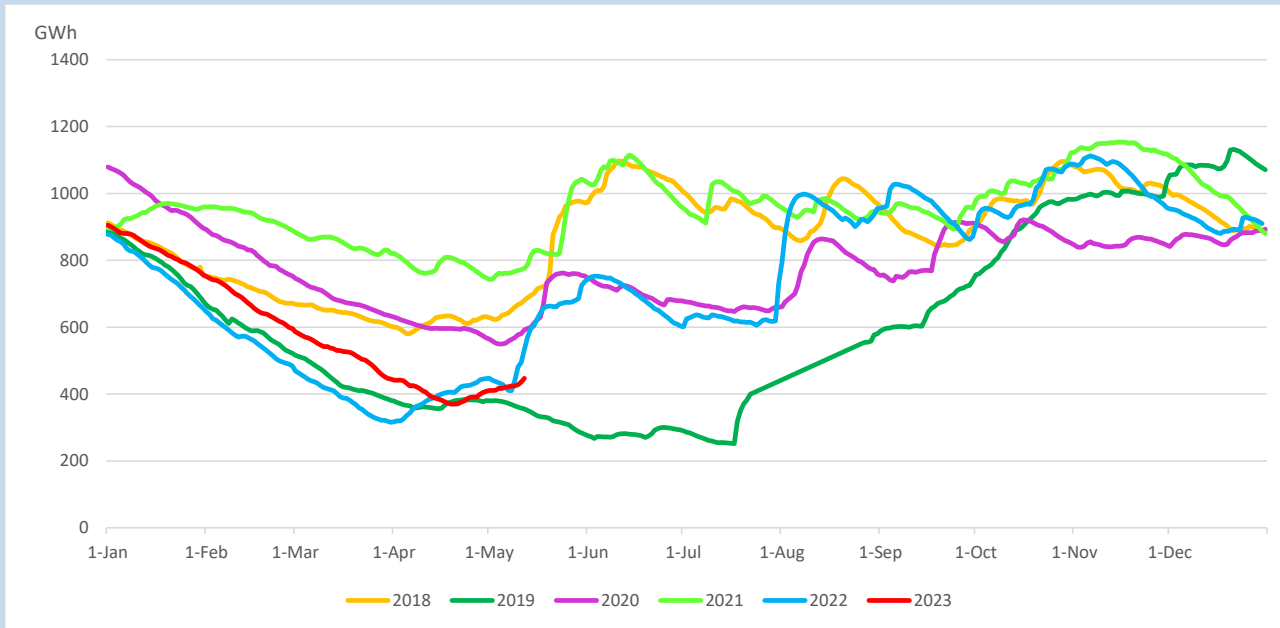
## Reservoir Levels -

as at 06.00 Hr on May 14, 2023

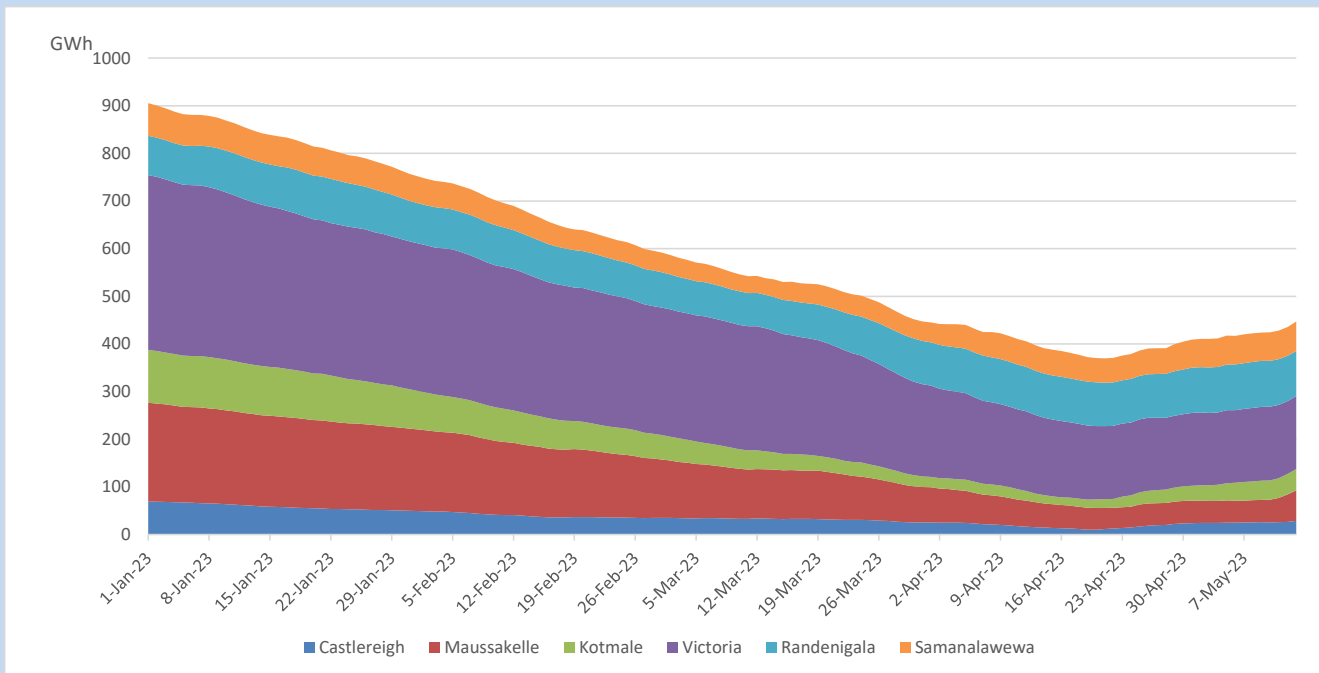


Total Reservoir Level	447 GWh
% of Total capacity	37.1%

## Comparison of Total Reservoir Storage Levels with Past Years

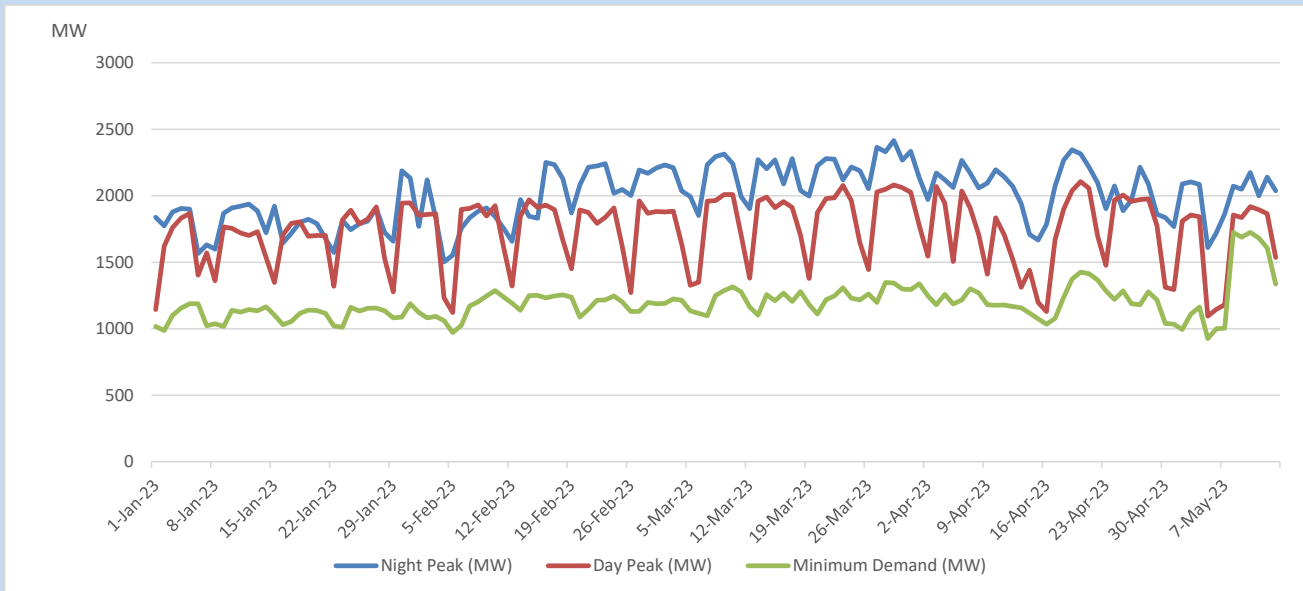


## Variation of Major Hydro Reservoir Levels in the current year (GWh)





## Variation of Demand during the current year

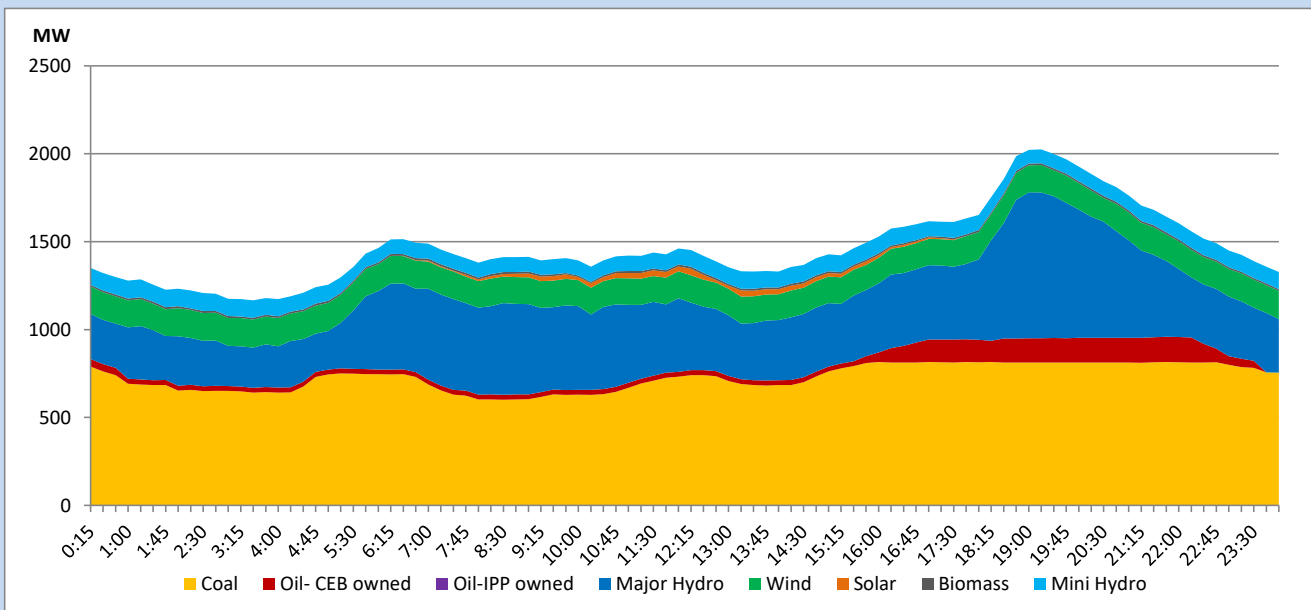


The above figures are excluding contribution from roof top solar, non telemetered solar and mini hydro plants

## Daily Load Curve

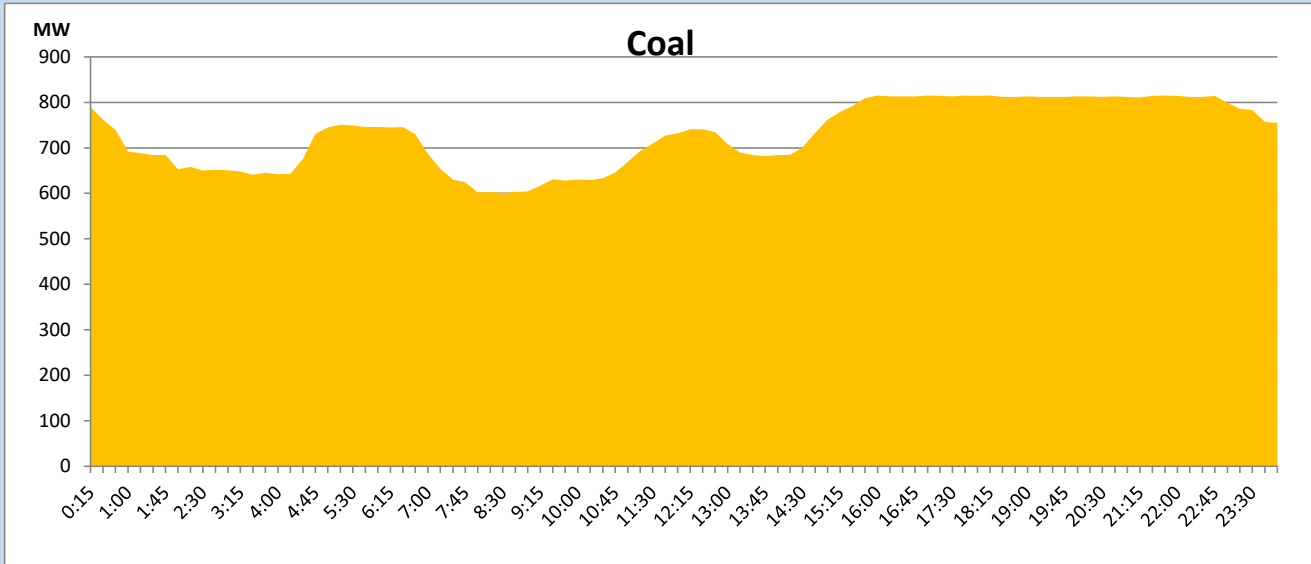
May 13, 2023

Solar and wind data is based on Telemetered Power Stations only



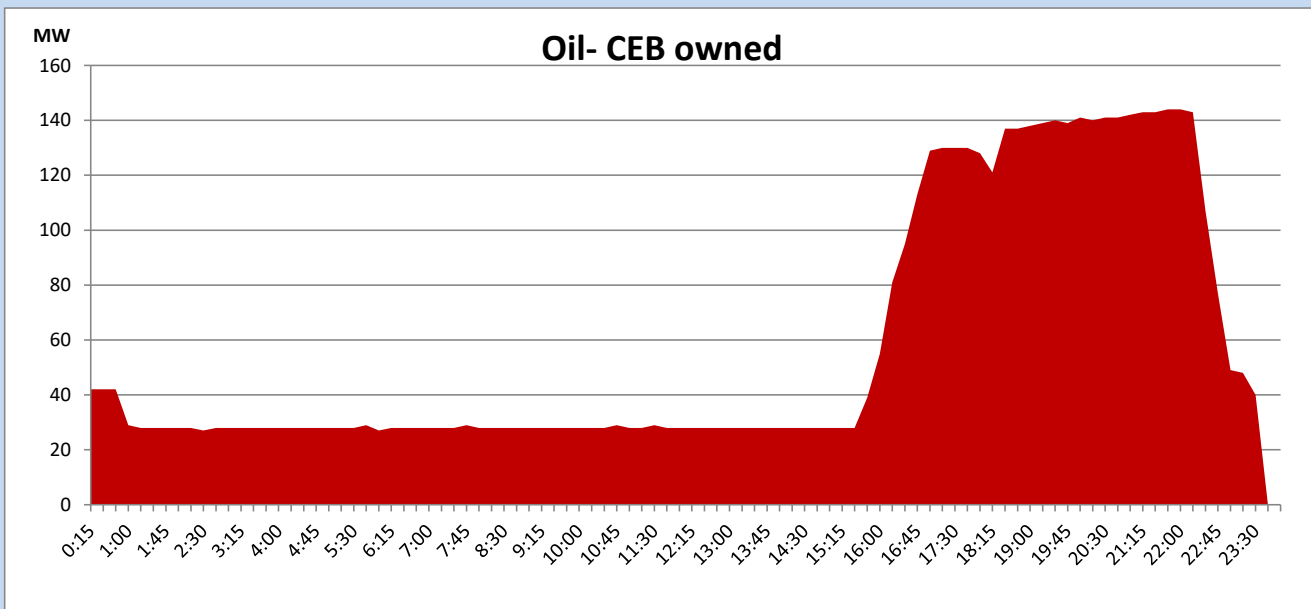
## Coal Generation during

May 13, 2023



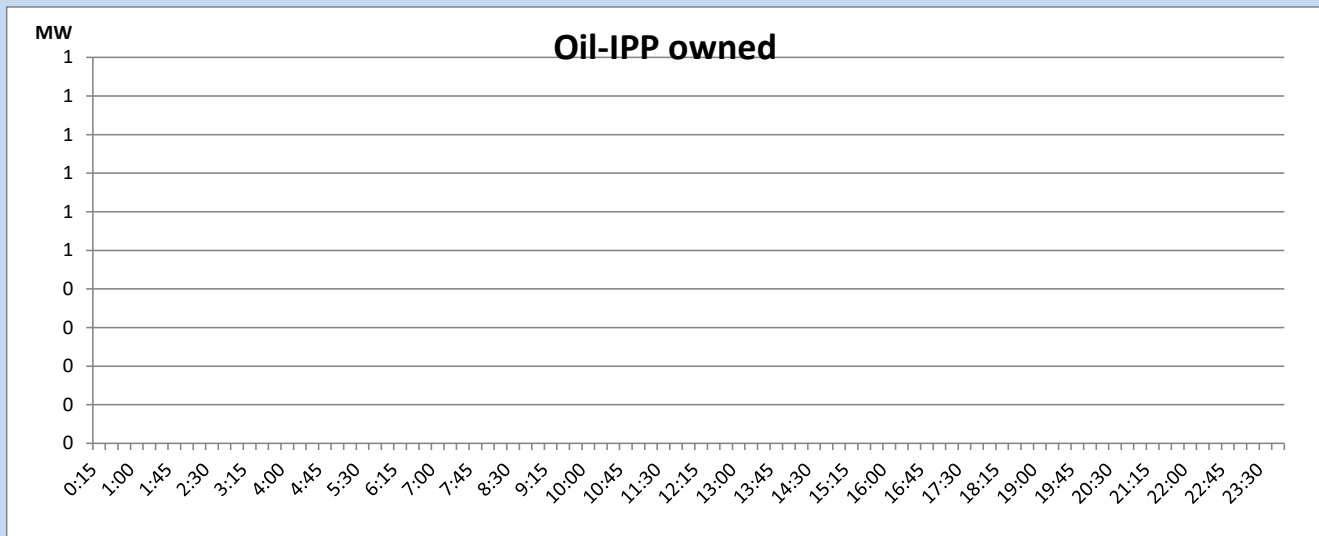
## CEB Oil Plant Generation during

May 13, 2023



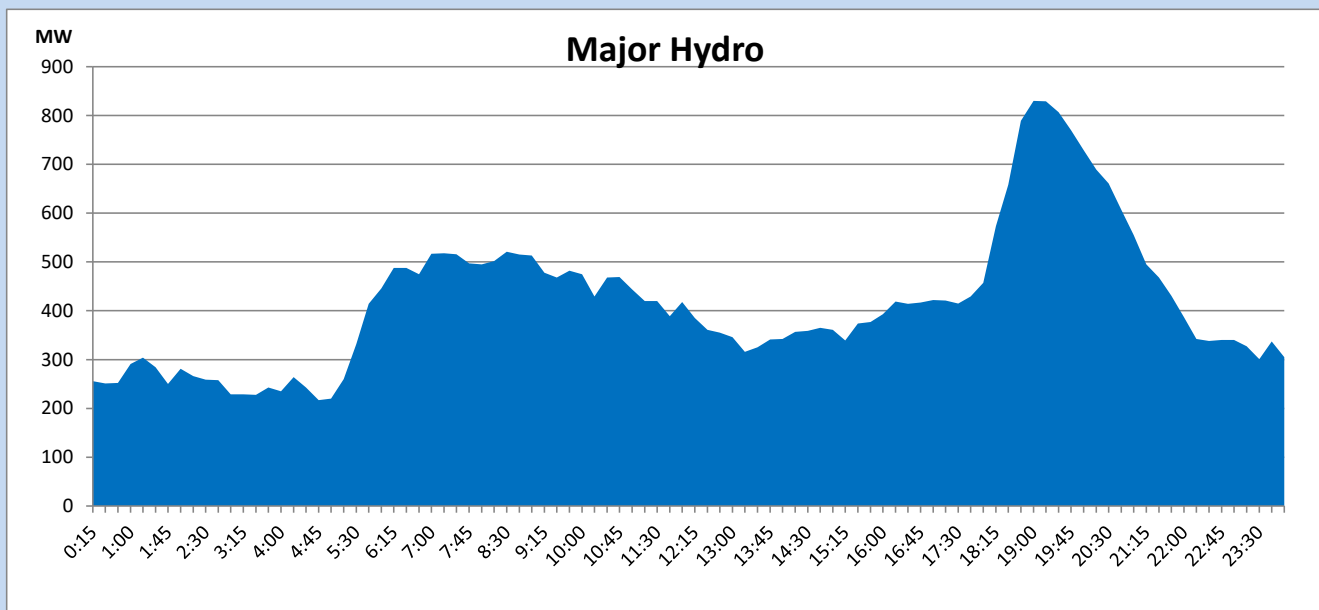
## IPP Oil Plant Generation during

May 13, 2023



## Major Hydro Generation during

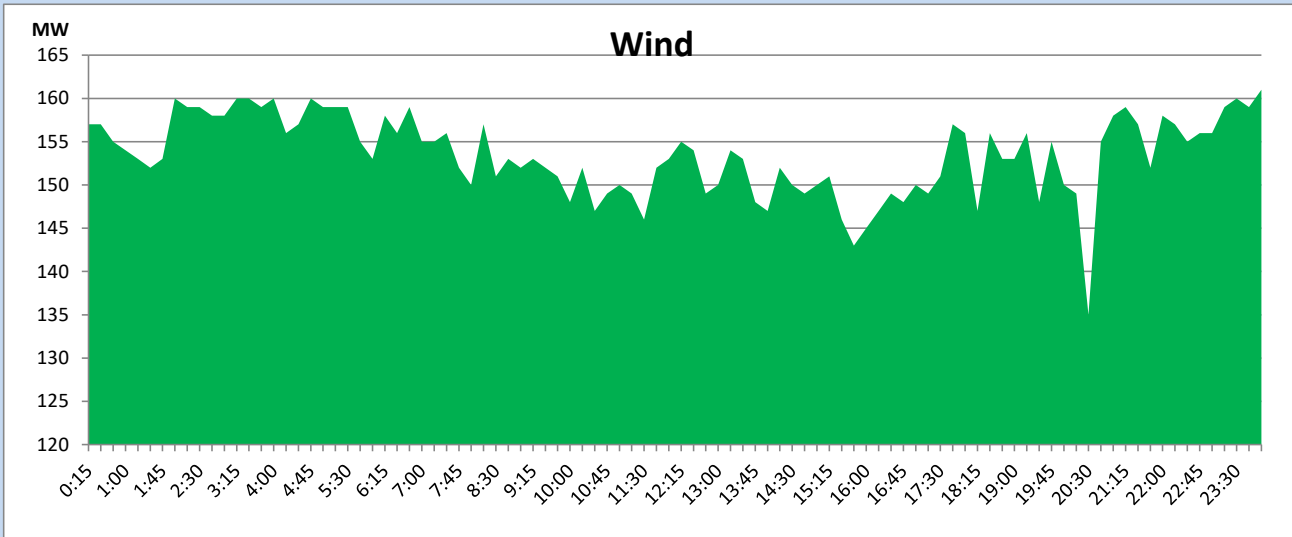
May 13, 2023



## Wind Generation during

May 13, 2023

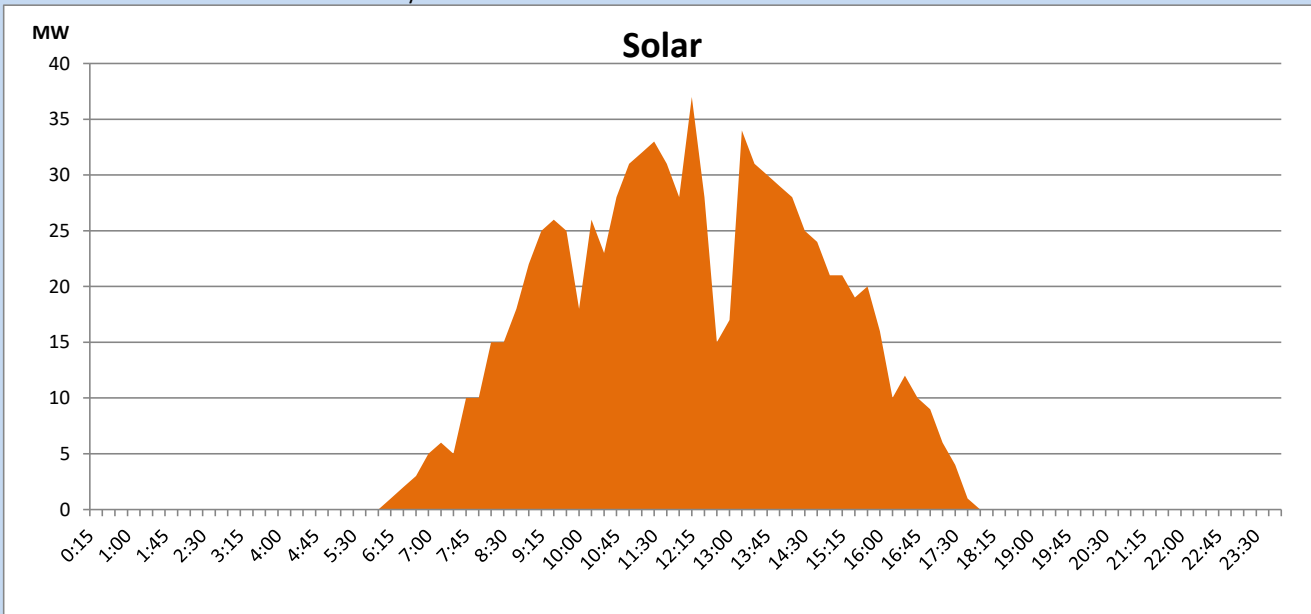
Based on Telemetered Power Stations only



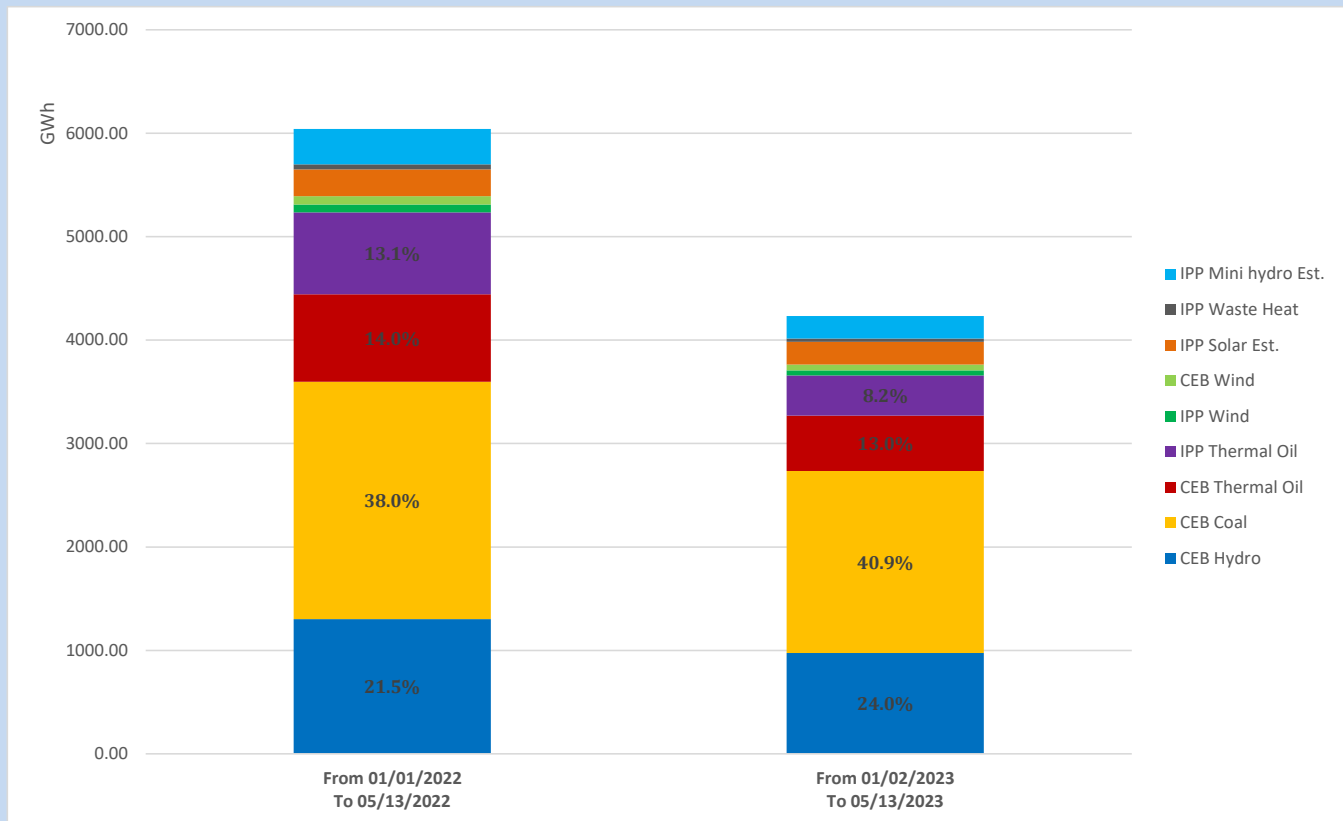
## Solar Generation during

May 13, 2023

Based on Telemetered Power Stations only



## Cumulative Dispatch Comparison with Last Year



The above figures are including contribution from roof top solar, non telemetered solar and mini hydro plants

## Thermal Plant Fuel types

Power Station	Primary Fuel
CEB Thermal	
Sapugaskanda 1	Heavy Fuel
Sapugaskanda 2	Heavy Fuel
Kelanitissa Small Gas Turbines	Auto Diesel
GT 7 - Kelanitissa	Auto Diesel
Kelanitissa CCY	Naphtha or Diesel
Lakvijaya 1	Coal
Lakvijaya 2	Coal
Lakvijaya 3	Coal
Uthuru Janani	Heavy Fuel
Barge CEB	Heavy Fuel

Power Station	Primary Fuel
Private Thermal	
West Coast	Auto Diesel / Heavy Fuel

## Major Incidents reported during the day

May 13, 2023

- 1) Uthuru Janani Unit 03 made unavailable at 17:03hrs due to starting failure. Uthuru Janani Unit 03 is yet to resume generation.
- 2) Power Barge Unit 04 made unavailable at 18:29hrs due to an exhaust leakage. Power Barge Unit 04 is yet to resume generation.
- 3) Athrugiriya to tower No. 152 section of N'Polpitiya – Thulhiriya – Athrugiriya cct, which was tripped on 12.05.2023 was restored at 19:36hrs. Rest of the circuit has already been restored on 12.05.2023.
- 4) Kukule Gen 01 tripped at 23:40hrs rejecting 38MW from the system, due to stator temperature high alarm. Kukule Gen 01 resumed generation at 00:15hrs(14.05.2023).
- 5) Kukule pond spilling continues to the present hour.