

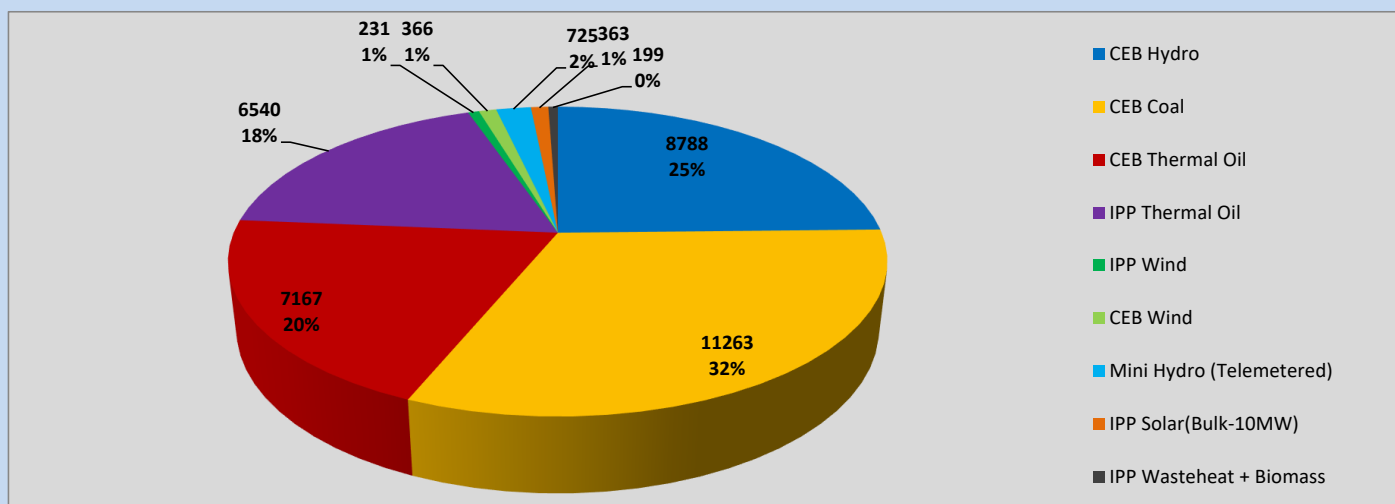
# Generation and Reservoirs Statistics

April 12, 2023



PUBLIC UTILITIES COMMISSION OF SRI LANKA

## Daily Generation Mix in MWh



Total Generation (Excluding estimated figures) =

35,642 MWh

### Estimated figures of CEB generation report

Estimated unserved energy = 0.00 GWh

Estimated Mini Hydro (Non telemetered) = 1655 MWh

Estimated IPP Solar PV (Bulk 1-10MW) = 304 MWh

Estimated Solar Roof Top PV = 1640 MWh

## Cumulative Dispatch

Following data excludes the contribution from roof top solar, non telemetered solar and mini hydro plants

### For Current Month

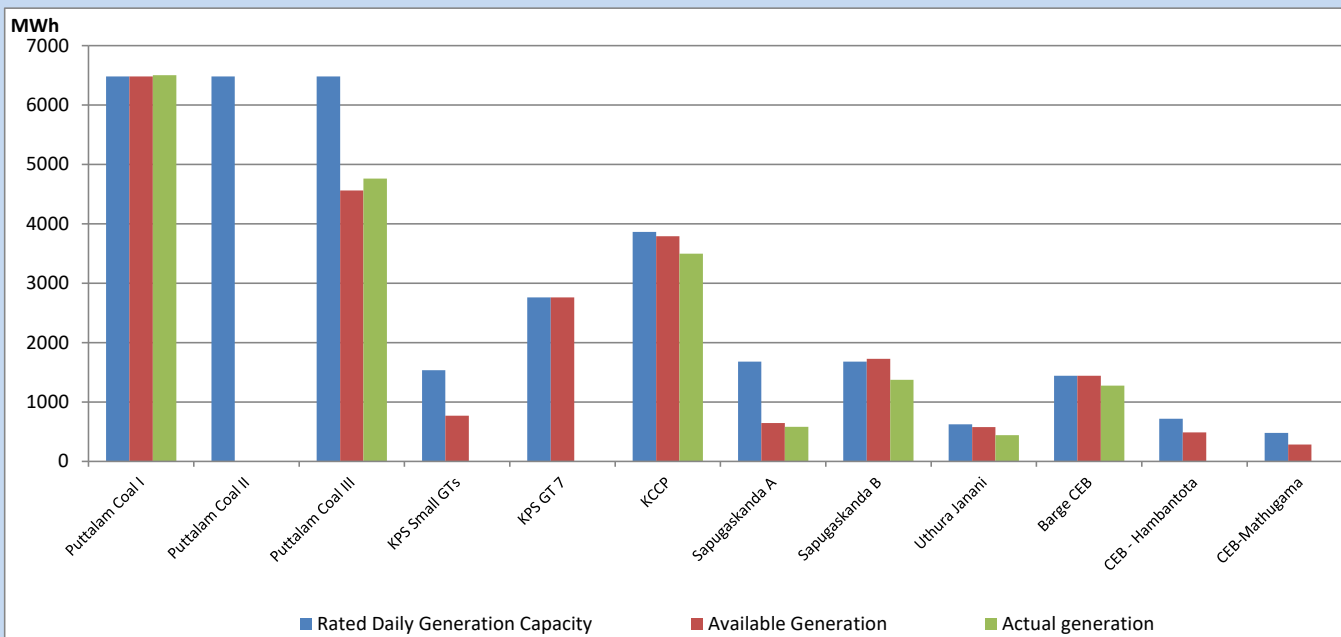
Category	Dispatch (GWh)	
CEB Hydro	141	30.54%
CEB Coal	147	31.88%
CEB Thermal Oil	76	16.52%
IPP Thermal	70	15.20%
SPP Wind	3	0.72%
CEB Wind	5	0.98%
Mini Hydro (Telemetered)	11	2.44%
IPP Solar (Bulk-10MW)	4	0.91%
IPP Wasteheat + BMP	4	0.83%
<b>Total</b>	<b>461</b>	

### For Current Year

Category	Dispatch (GWh)	
CEB Hydro	1,062	27.39%
CEB Coal	1,670	43.06%
CEB Thermal Oil	546	14.09%
IPP Thermal	340	8.77%
SPP Wind	54	1.40%
CEB Wind	65	1.67%
Mini Hydro (Telemetered)	80	2.07%
IPP Solar (Bulk-10MW)	30	0.77%
IPP Wasteheat	30	0.78%
<b>Total</b>	<b>3,877</b>	

## CEB owned Thermal Plant Dispatch

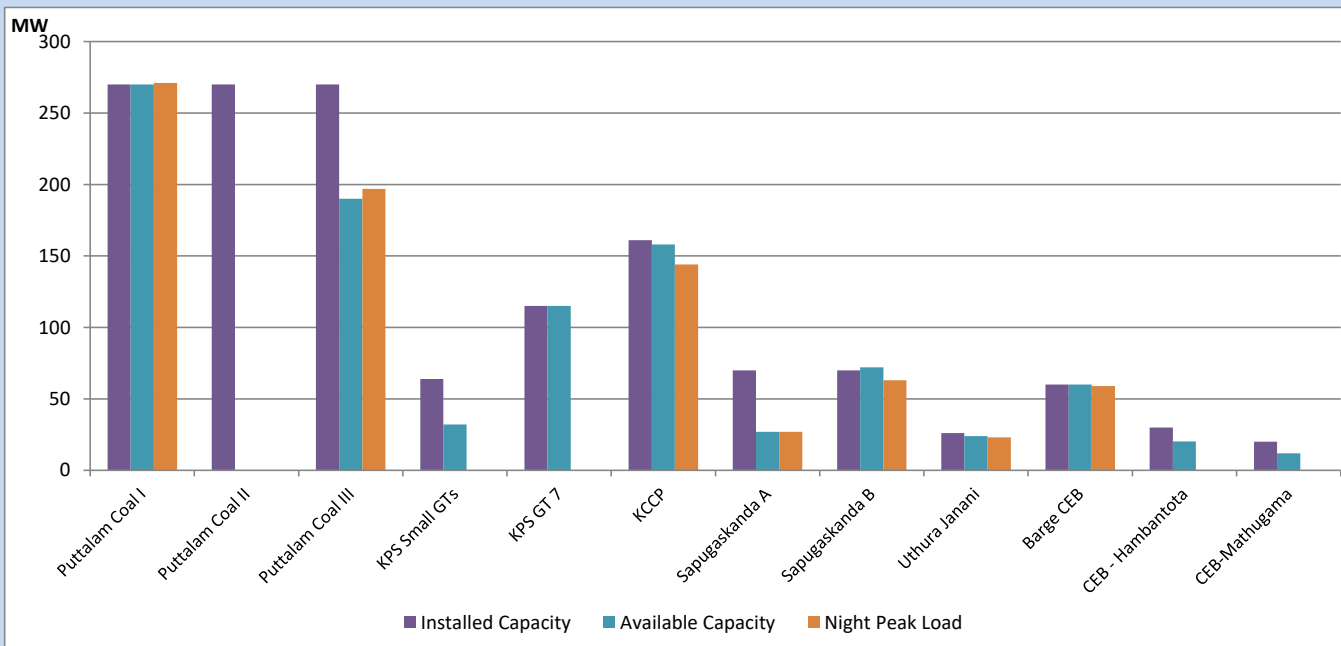
April 12, 2023



Available Generation is estimated based on plant availability at 6.00am on

April 13, 2023

## CEB owned Thermal Plant Loading at the Night Peak

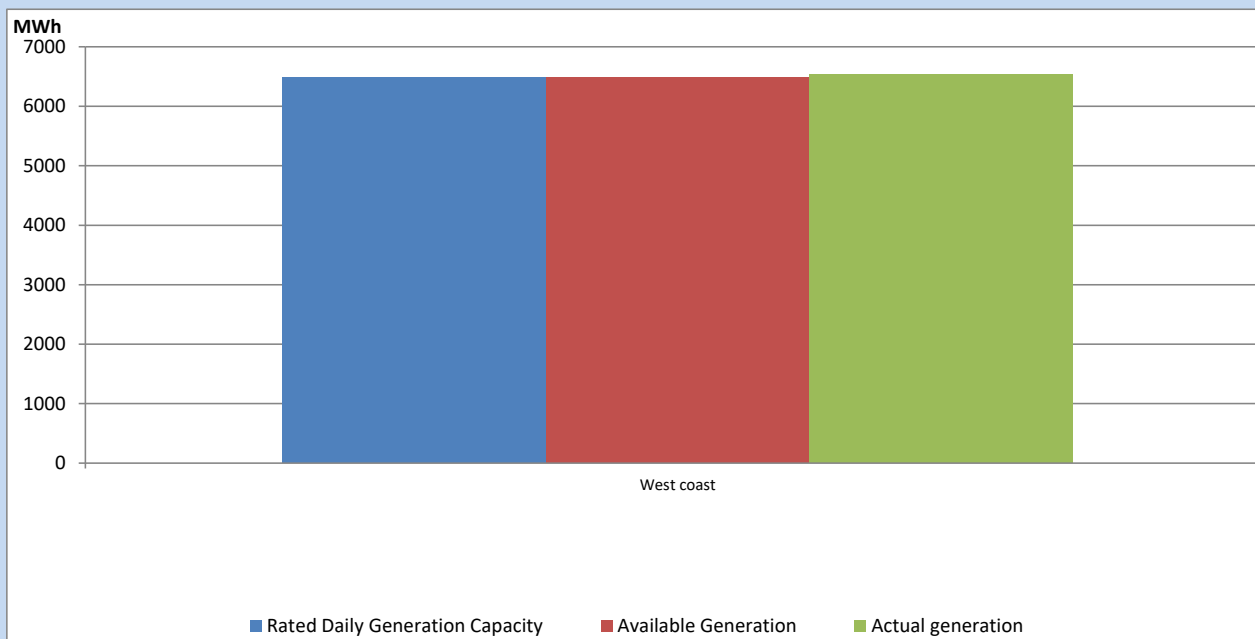


Note- Plant avilability is recorded at 6.00 am on

April 13, 2023

## IPP owned Thermal Plant Dispatch

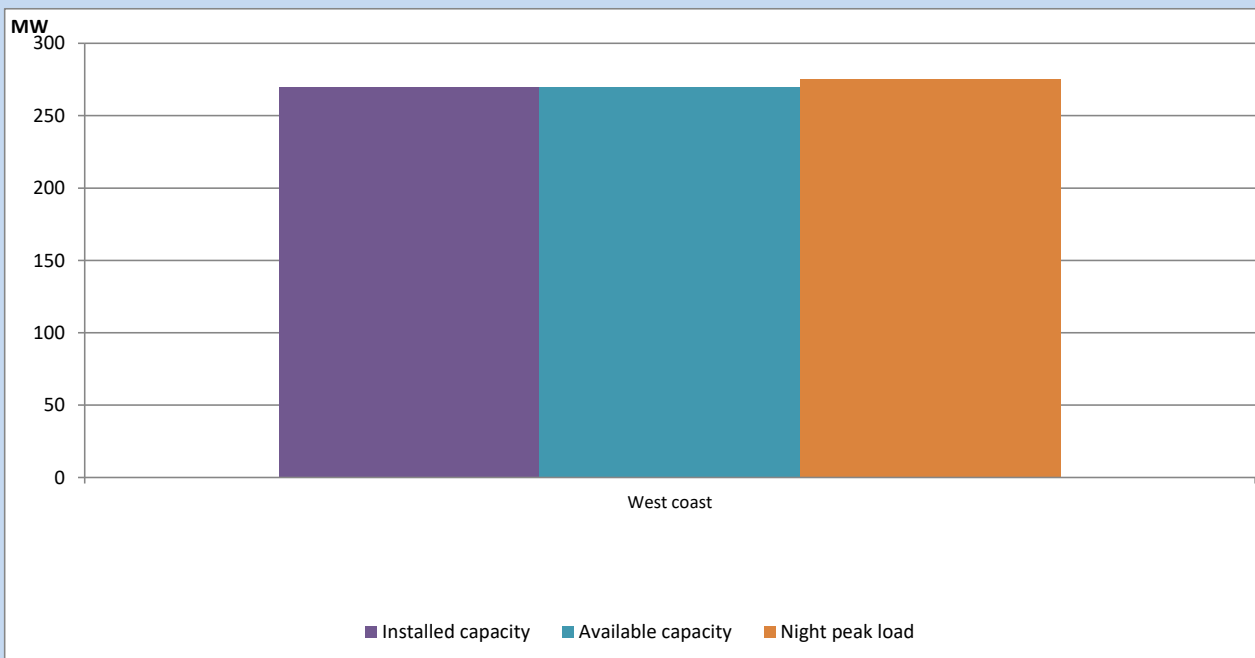
April 12, 2023



Available Generation is estimated based on plant availability at 6.00am on

April 13, 2023

## IPP owned Thermal Plant Loading at the Night Peak

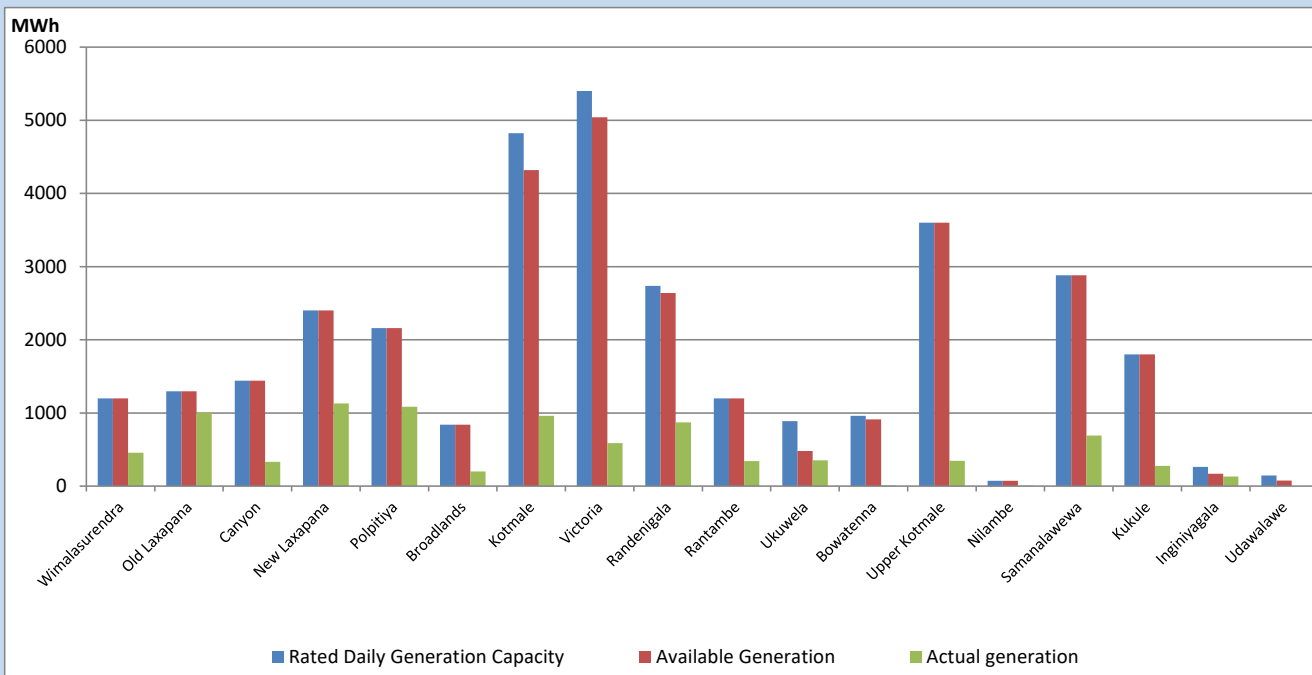


Note- Plant availability is recorded at 6.00 am on

April 13, 2023

## Major Hydro Plant Dispatch

April 12, 2023

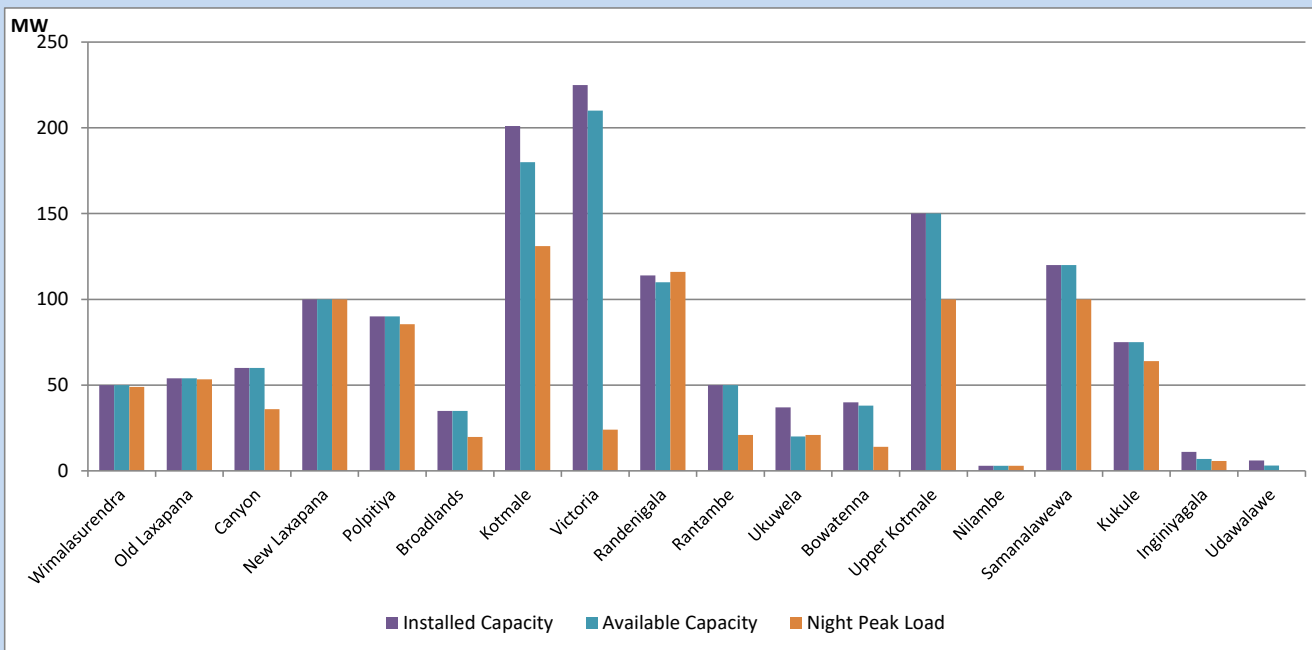


Available Generation is estimated based on plant availability at 6.00am on  
Broadlands power plant is operating in the Commissioning Stage

April 13, 2023

## Major Hydro Plant Loading at Night Peak

April 12, 2023



Note- Plant availability is recorded at 6.00 am on  
Broadlands power plant is operating in the Commissioning Stage

April 13, 2023

## Summary of Major Plant performance

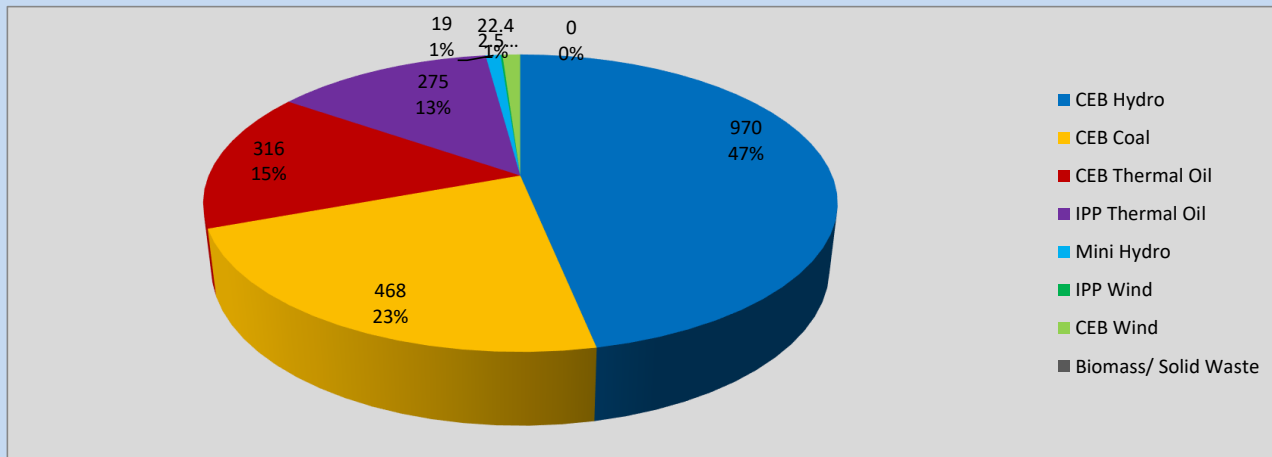
Plant	Installed Capacity	Plant Availability	Night peak Load	Plant Dispatch
	(MW)	(MW)	(MW)	(MWh)
Wimalasurendra	50	50	49	457
Old Laxapana	54	54	53	1,006
Canyon	60	60	36	333
New Laxapana	100	100	100	1,131
Polpitiya	90	90	86	1,086
Broadlands	35	35	20	201
Kotmale	201	180	131	960
Victoria	225	210	24	588
Randenigala	114	110	116	870
Rantambe	50	50	21	341
Ukuwela	37	20	21	354
Bowatenna	40	38	14	9
Upper Kotmale	150	150	100	346
Nilambe	3	3	3	6
Samanalawewa	120	120	100	692
Kukule	75	75	64	277
Inginiyagala	11	7	6	131
Udawalawe	6	3	0	0
Puttalam Coal I	270	270	271	6,503
Puttalam Coal II	270	0	0	0
Puttalam Coal III	270	190	197	4,760
KPS Small GTs	64	32	0	0
KPS GT 7	115	115	0	0
KCCP	161	158	144	3,498
Sapugaskanda A	70	27	27	581
Sapugaskanda B	70	72	63	1,373
Uthura Janani	26	24	23	441
Barge CEB	60	60	59	1,274
CEB-Hambantota	30	20	0	0
CEB-Mathugama	20	12	0	0
ACE Matara	24	0	0	0
Asia Power	50	0	0	0
Sojitz Kelanitissa	163	0	0	0
West Coast	270	270	275	6,540
Nothern Power	36	0	0	0
ACE Embilipitiya	93	0	0	0
<b>Total</b>	<b>3,483</b>	<b>2,605</b>	<b>2,046</b>	<b>35,642</b>

Plant availability is the availability recorded at 6 am on

April 13, 2023

## Contribution to the Night Peak in MW

April 12, 2023

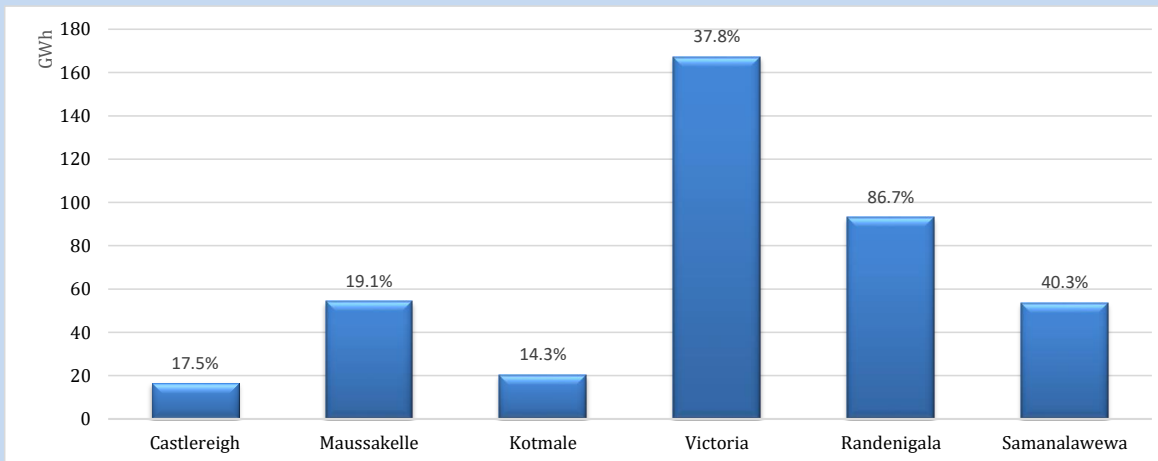


Night Peak*	2,072 MW
Day Peak	1,525 MW
Minimum Demand	1,167 MW

Above figures are excluding contribution from roof top solar, non telemetered solar and mini hydro plants

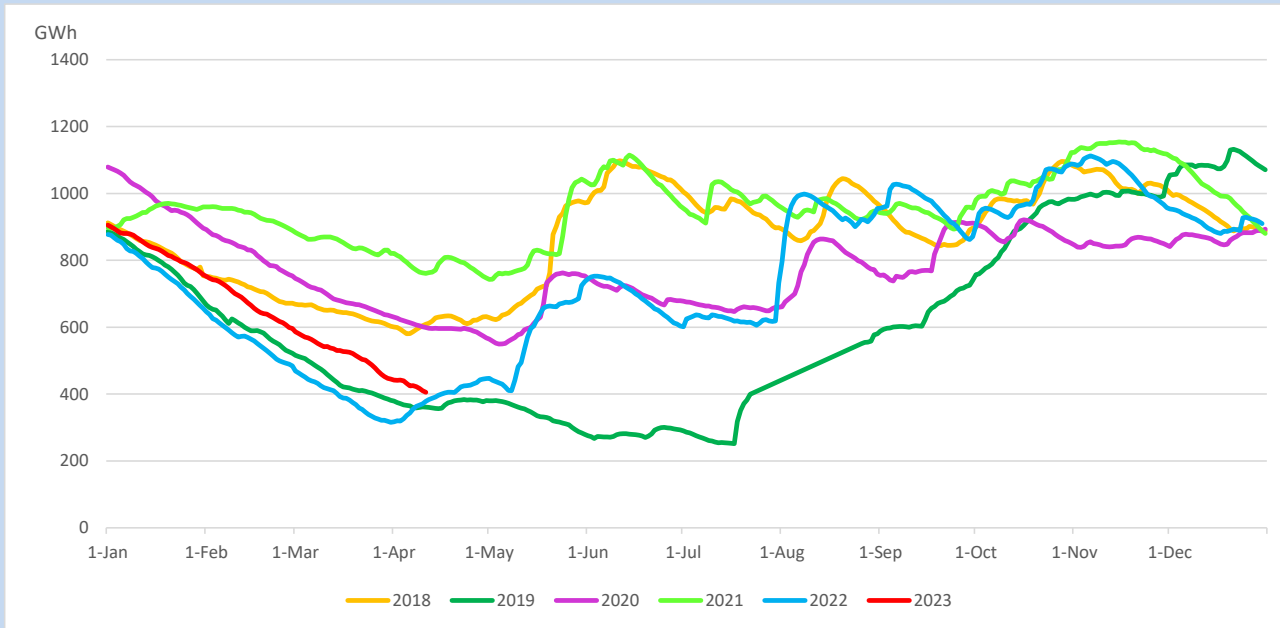
## Reservoir Levels -

as at 06.00 Hr on April 13, 2023

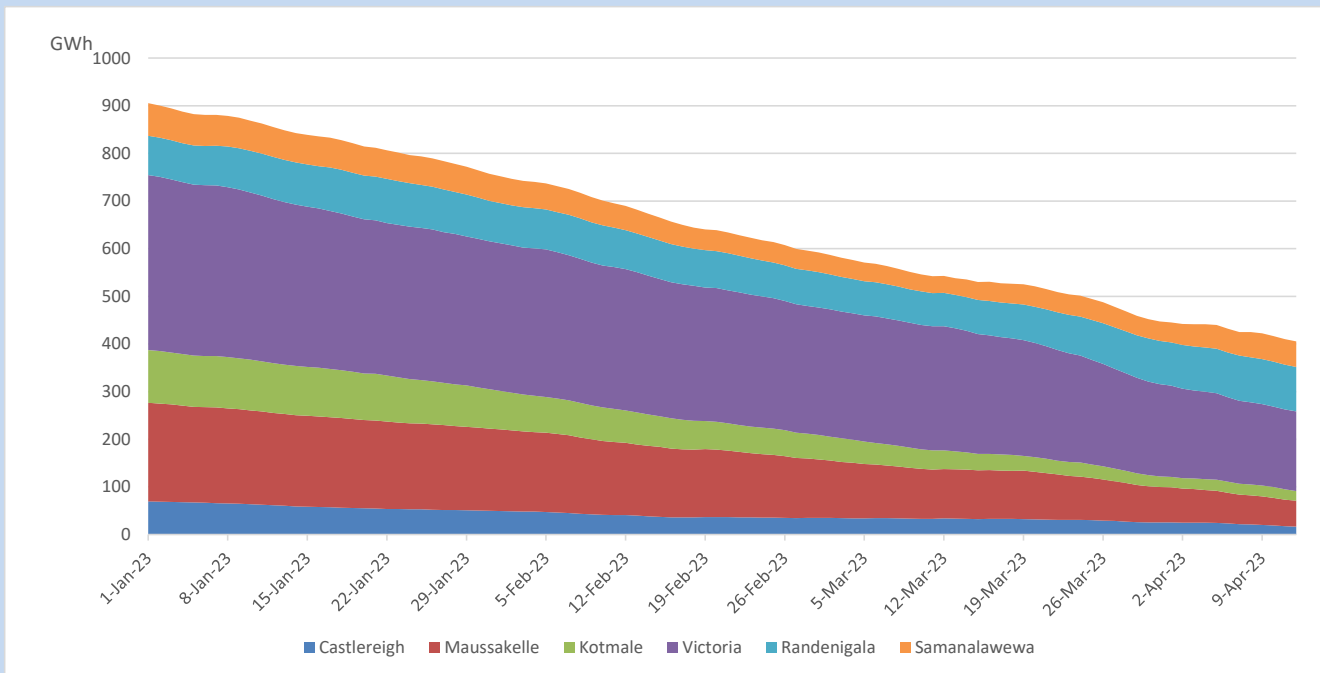


Total Reservoir Level	405.4 GWh
% of Total capacity	33.6%

## Comparison of Total Reservoir Storage Levels with Past Years

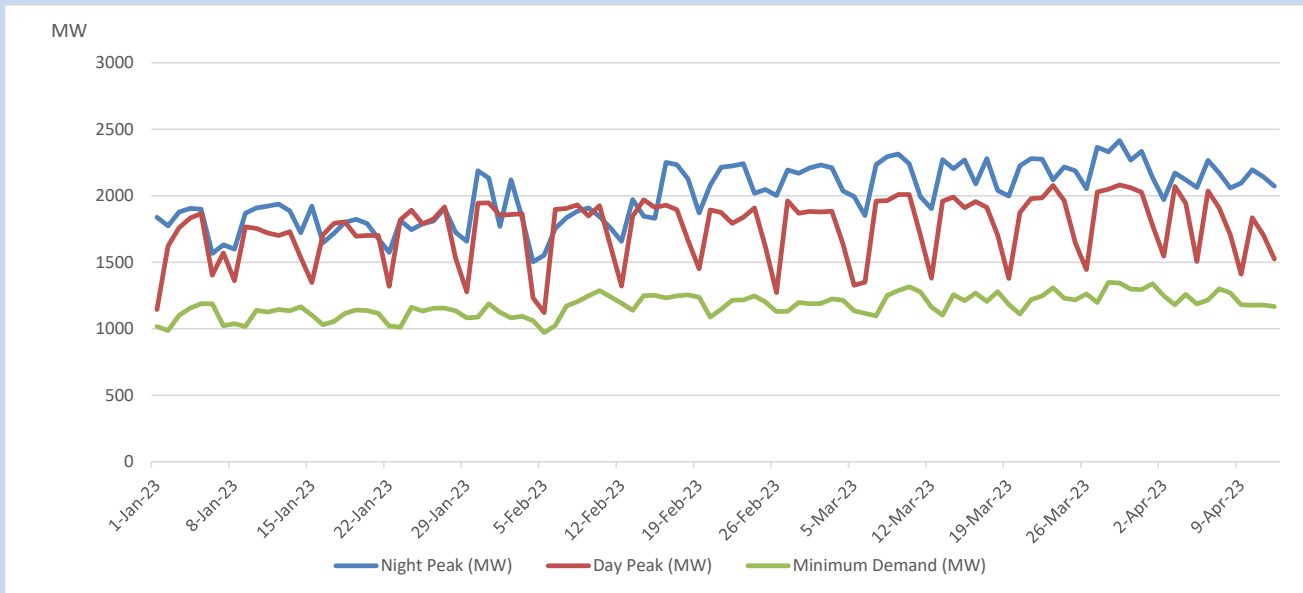


## Variation of Major Hydro Reservoir Levels in the current year (GWh)





## Variation of Demand during the current year

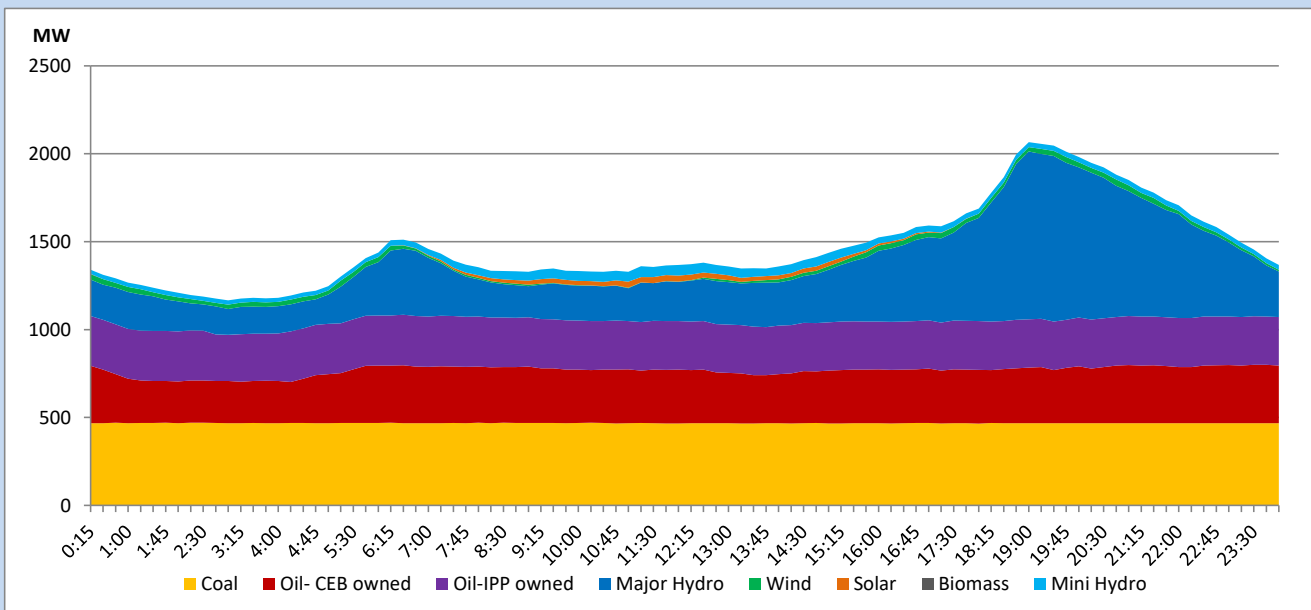


The above figures are excluding contribution from roof top solar, non telemetered solar and mini hydro plants

## Daily Load Curve

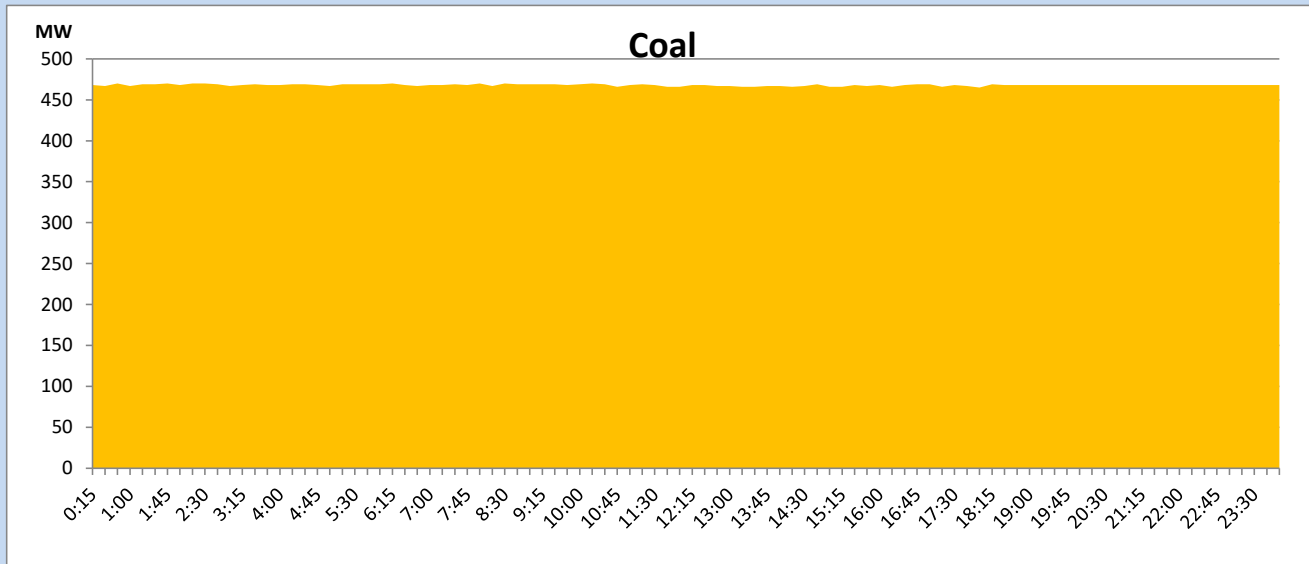
April 12, 2023

Solar and wind data is based on Telemetered Power Stations only



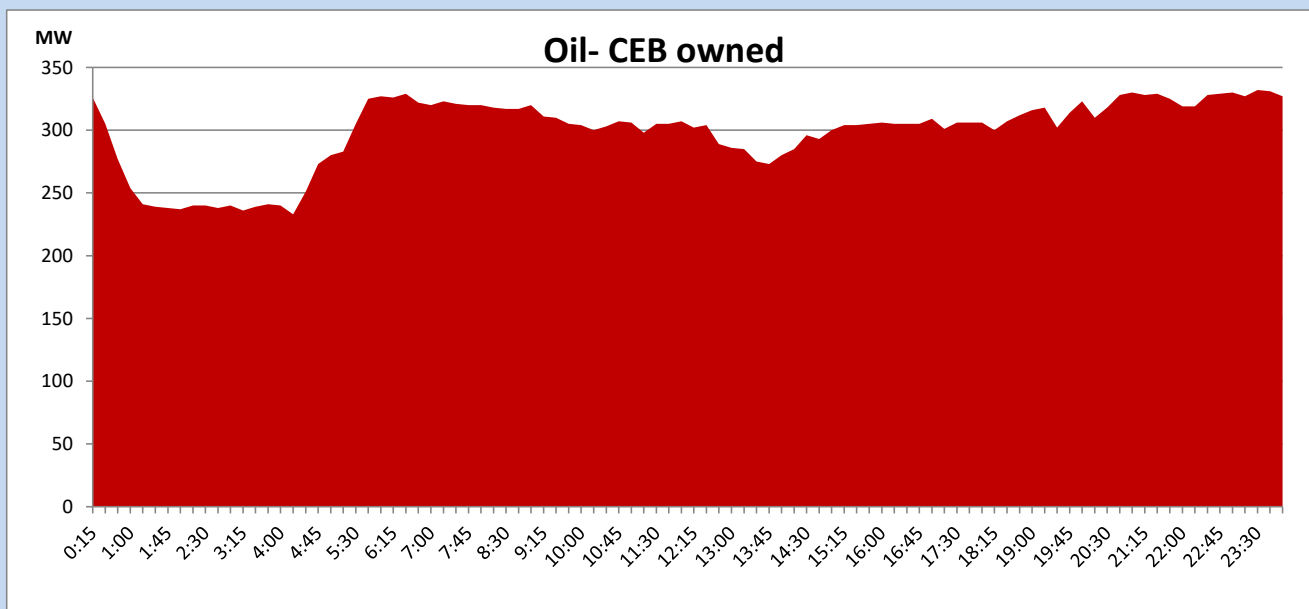
## Coal Generation during

April 12, 2023



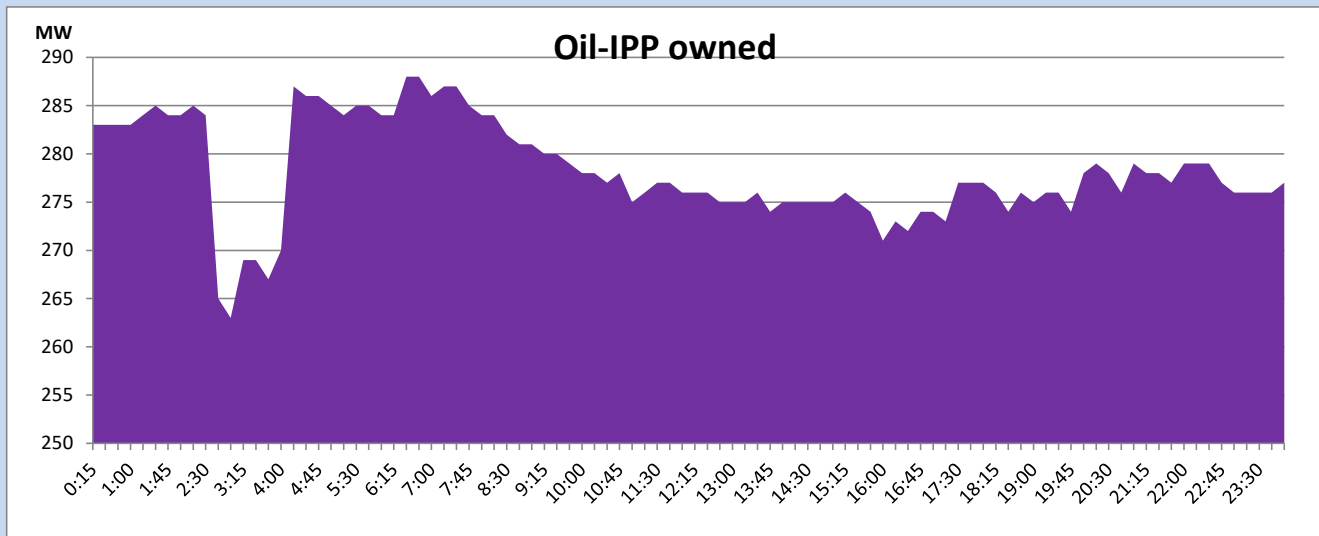
## CEB Oil Plant Generation during

April 12, 2023



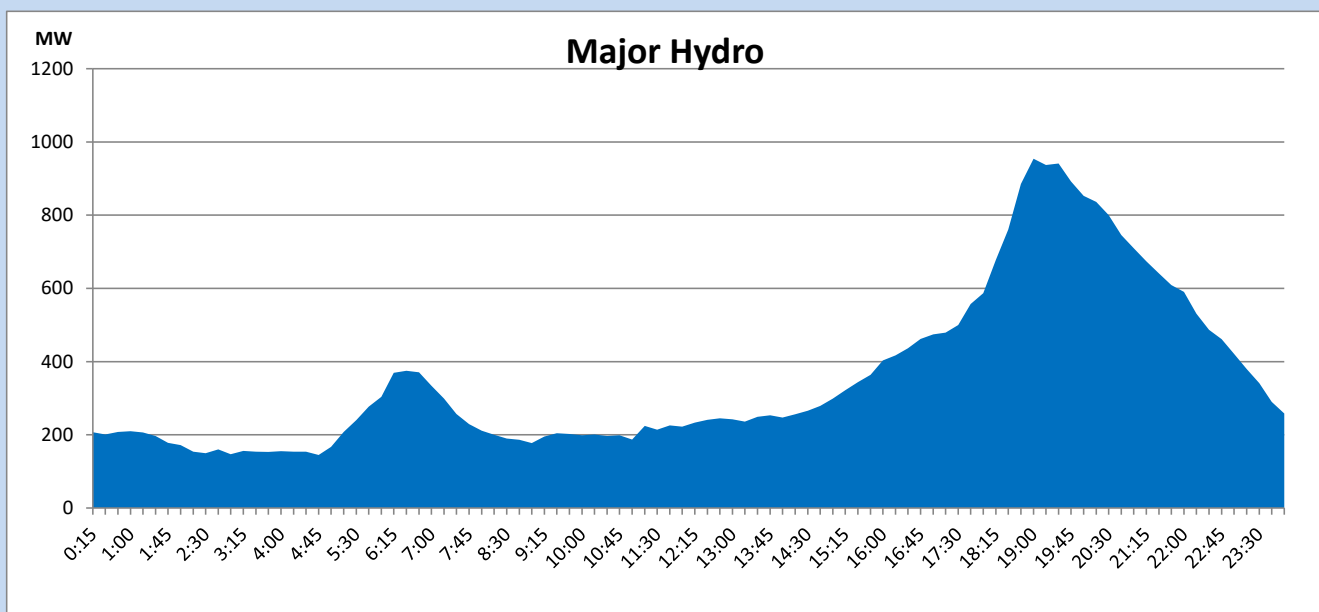
## IPP Oil Plant Generation during

April 12, 2023



## Major Hydro Generation during

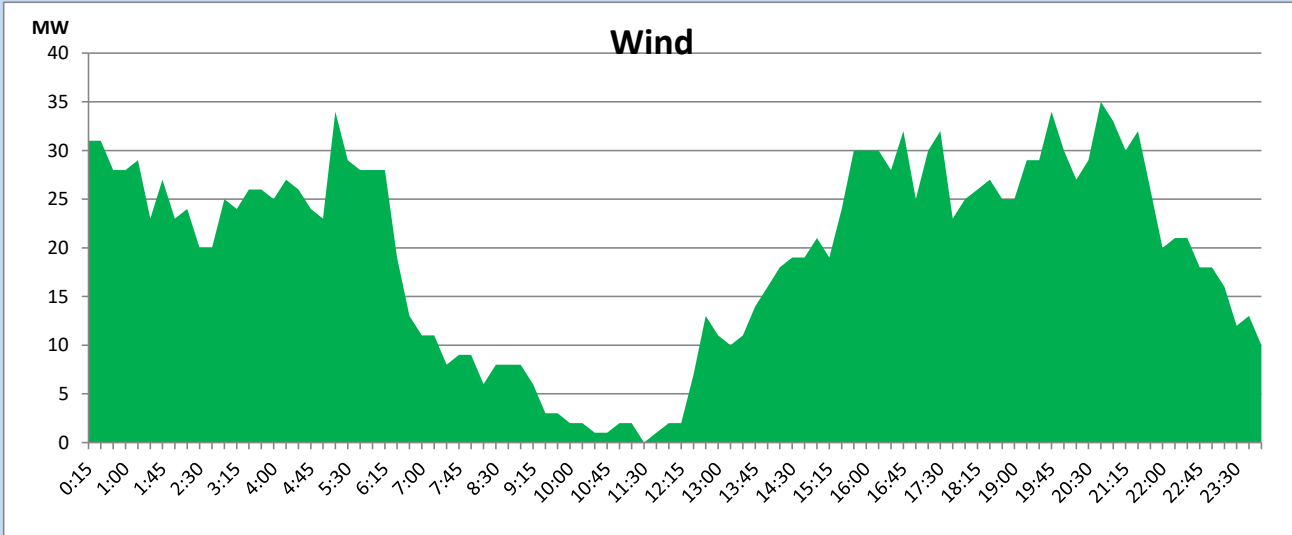
April 12, 2023



## Wind Generation during

April 12, 2023

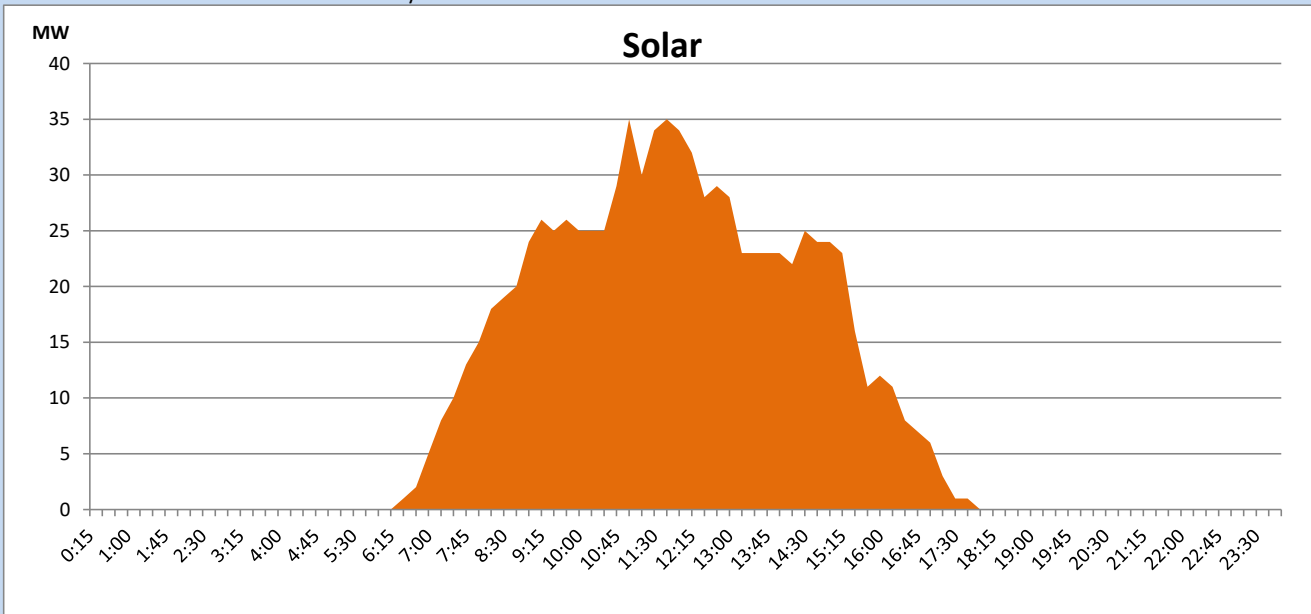
Based on Telemetered Power Stations only



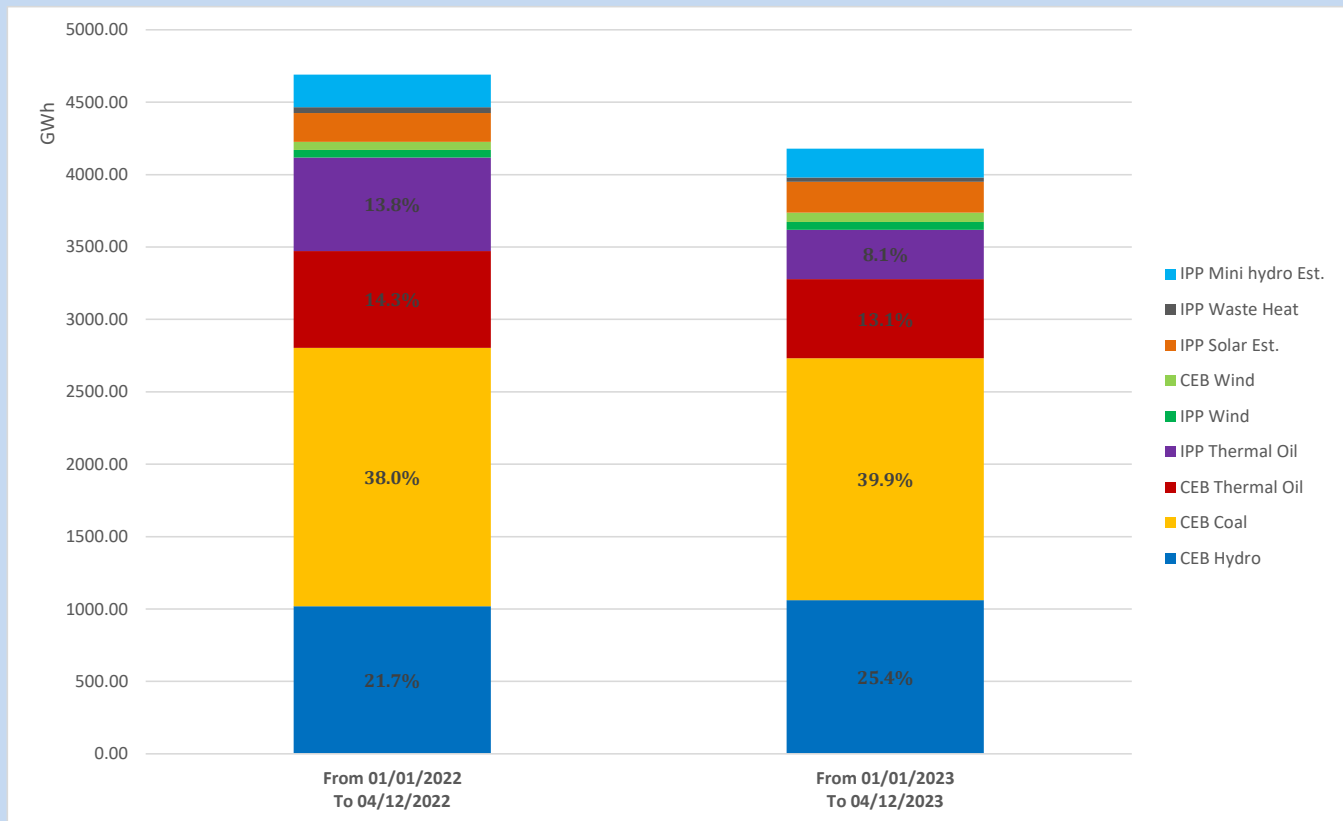
## Solar Generation during

April 12, 2023

Based on Telemetered Power Stations only



## Cumulative Dispatch Comparison with Last Year



The above figures are including contribution from roof top solar, non telemetered solar and mini hydro plants

## Thermal Plant Fuel types

Power Station	Primary Fuel
CEB Thermal	
Sapugaskanda 1	Heavy Fuel
Sapugaskanda 2	Heavy Fuel
Kelanitissa Small Gas Turbines	Auto Diesel
GT 7 - Kelanitissa	Auto Diesel
Kelanitissa CCY	Naphtha or Diesel
Lakvijaya 1	Coal
Lakvijaya 2	Coal
Lakvijaya 3	Coal
Uthuru Janani	Heavy Fuel
Barge CEB	Heavy Fuel

Power Station	Primary Fuel
Private Thermal	
West Coast	Auto Diesel / Heavy Fuel

## Major Incidents reported during the day

April 12, 2023

- 1) Habarana 132/33kV T/F 03 manually switched off at 15:11hrs due to operation of Buchholz alarm in earthing T/F. Habarana 132/33kV T/F 03 is yet to be restored
- 2) Sapugaskanda P/S unit 06 and 11 made unavailable from 12:34hrs to 14:56hrs and from 09:34hrs to 18:38hrs due to B/D, respectively.