

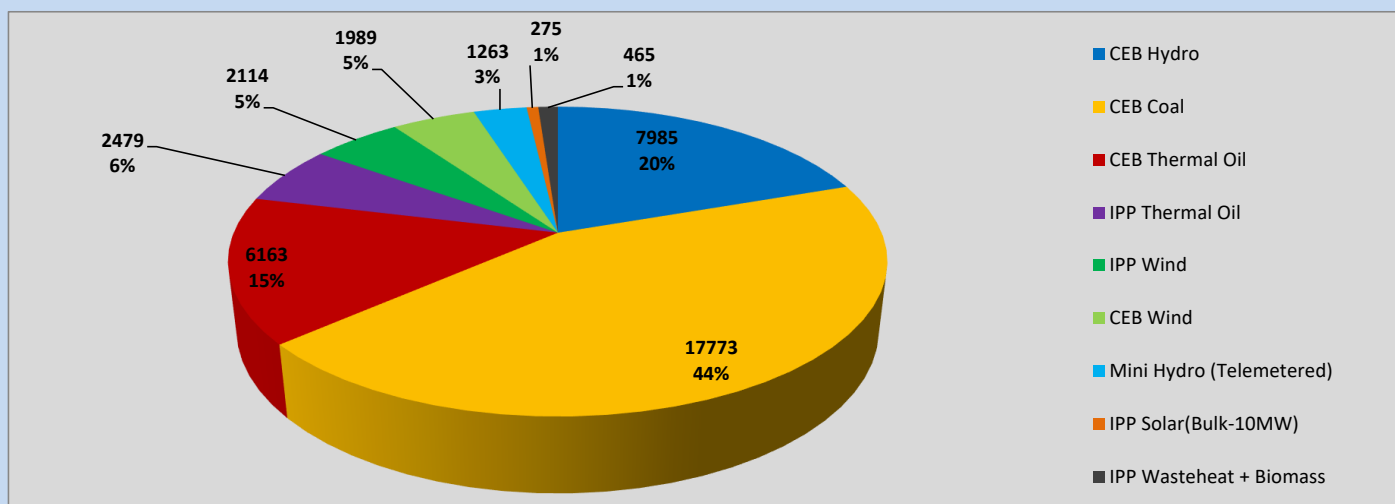
Generation and Reservoirs Statistics

May 11, 2023



PUBLIC UTILITIES COMMISSION OF SRI LANKA

Daily Generation Mix in MWh



Total Generation (Excluding estimated figures) =

40,506 MWh

Estimated figures of CEB generation report

Estimated unserved energy = 0.00 GWh

Estimated Mini Hydro (Non telemetered) = 2727 MWh

Estimated IPP Solar PV (Bulk 1-10MW) = 304 MWh

Estimated Solar Roof Top PV = 1920 MWh

Cumulative Dispatch

Following data excludes the contribution from roof top solar, non telemetered solar and mini hydro plants

For Current Month

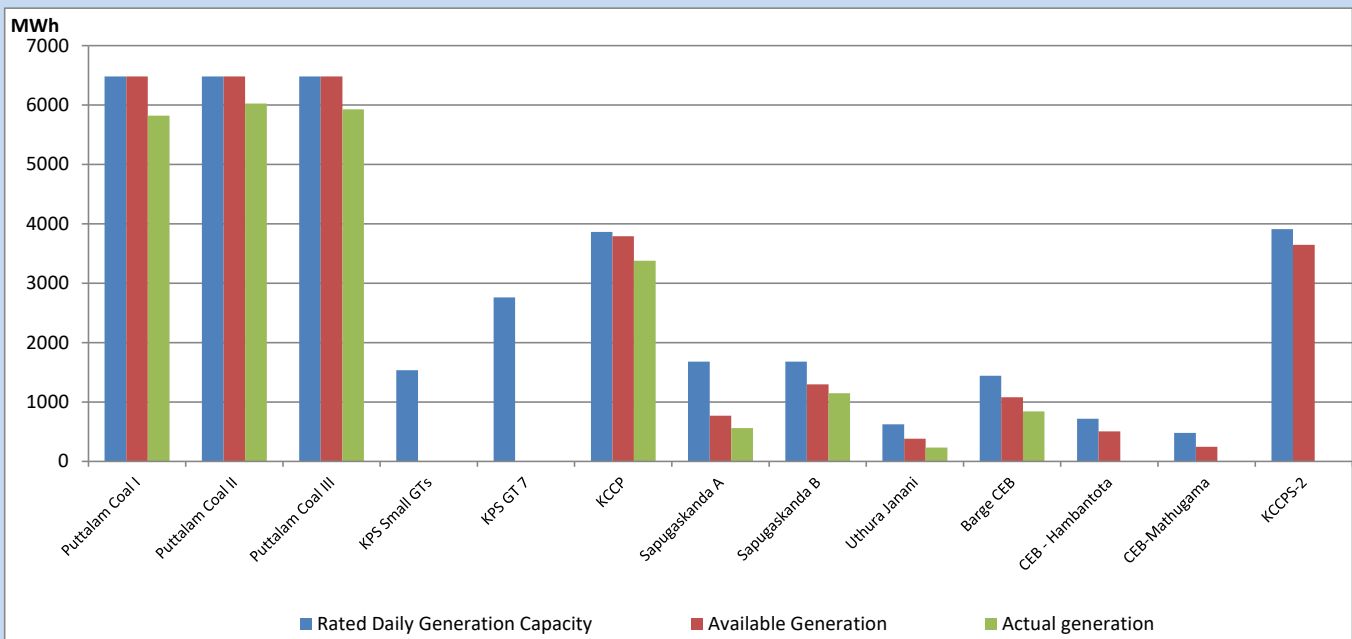
Category	Dispatch (GWh)	
CEB Hydro	83	21.26%
CEB Coal	204	52.17%
CEB Thermal Oil	47	12.02%
IPP Thermal	28	7.04%
SPP Wind	7	1.76%
CEB Wind	6	1.54%
Mini Hydro (Telemetered)	10	2.60%
IPP Solar(Bulk-10MW)	3	0.67%
IPP Wasteheat + BMP	4	0.93%
Total	391	

For Current Year

Category	Dispatch (GWh)	
CEB Hydro	1,285	25.98%
CEB Coal	2,191	44.31%
CEB Thermal Oil	702	14.20%
IPP Thermal	445	9.00%
SPP Wind	65	1.31%
CEB Wind	76	1.54%
Mini Hydro (Telemetered)	106	2.14%
IPP Solar(Bulk-10MW)	37	0.75%
IPP Wasteheat	38	0.78%
Total	4,945	

CEB owned Thermal Plant Dispatch

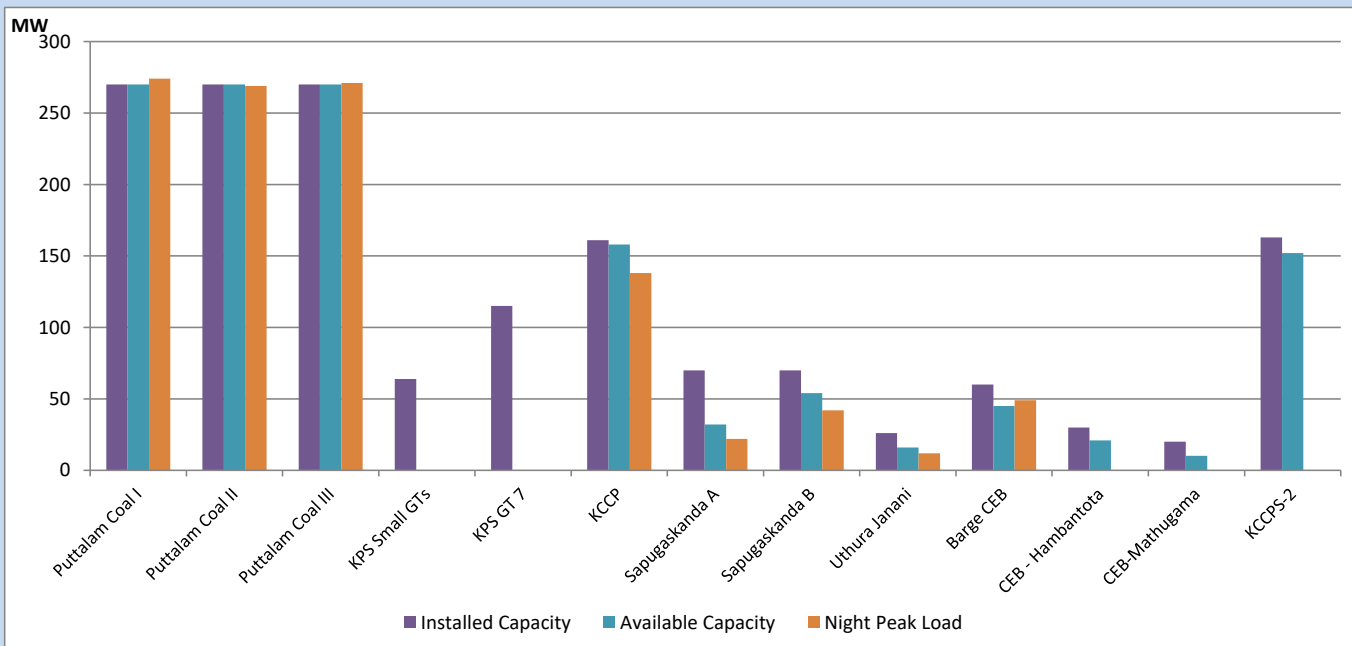
May 11, 2023



Available Generation is estimated based on plant availability at 6.00am on

May 12, 2023

CEB owned Thermal Plant Loading at the Night Peak



Note-

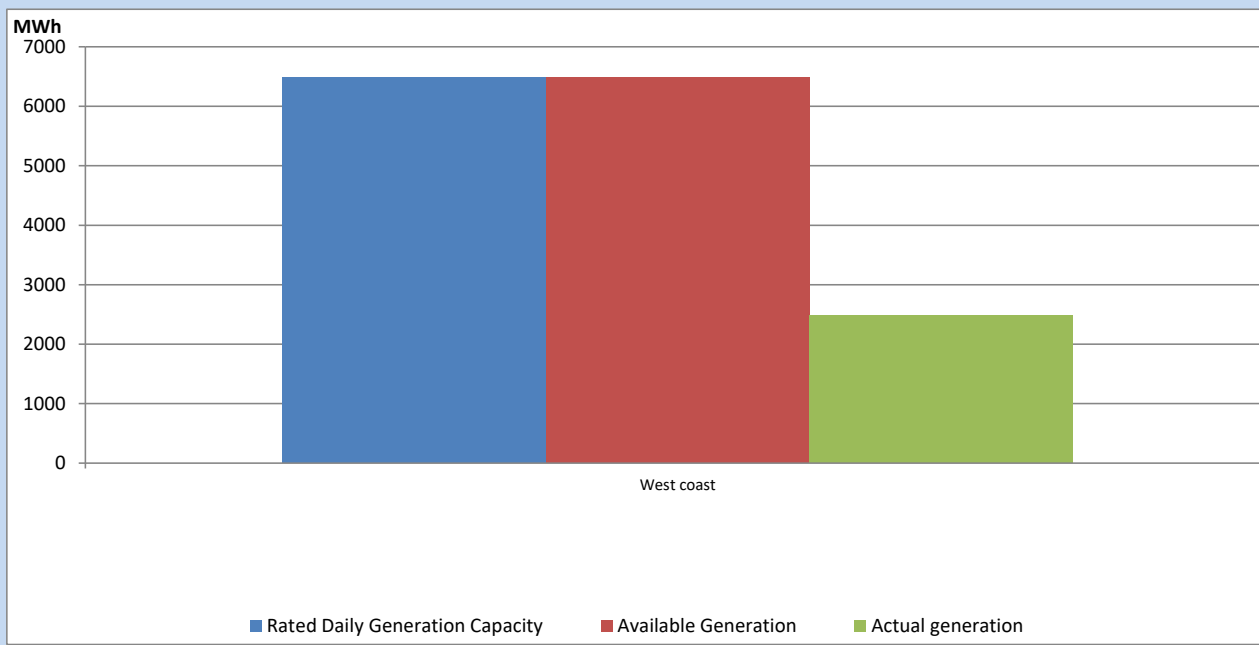
Plant availability is recorded at 6.00 am on

May 12, 2023

Sojitz Kelanitissa Plant is under Testing & Commissioning following to plant transfer procedure to CEB

IPP owned Thermal Plant Dispatch

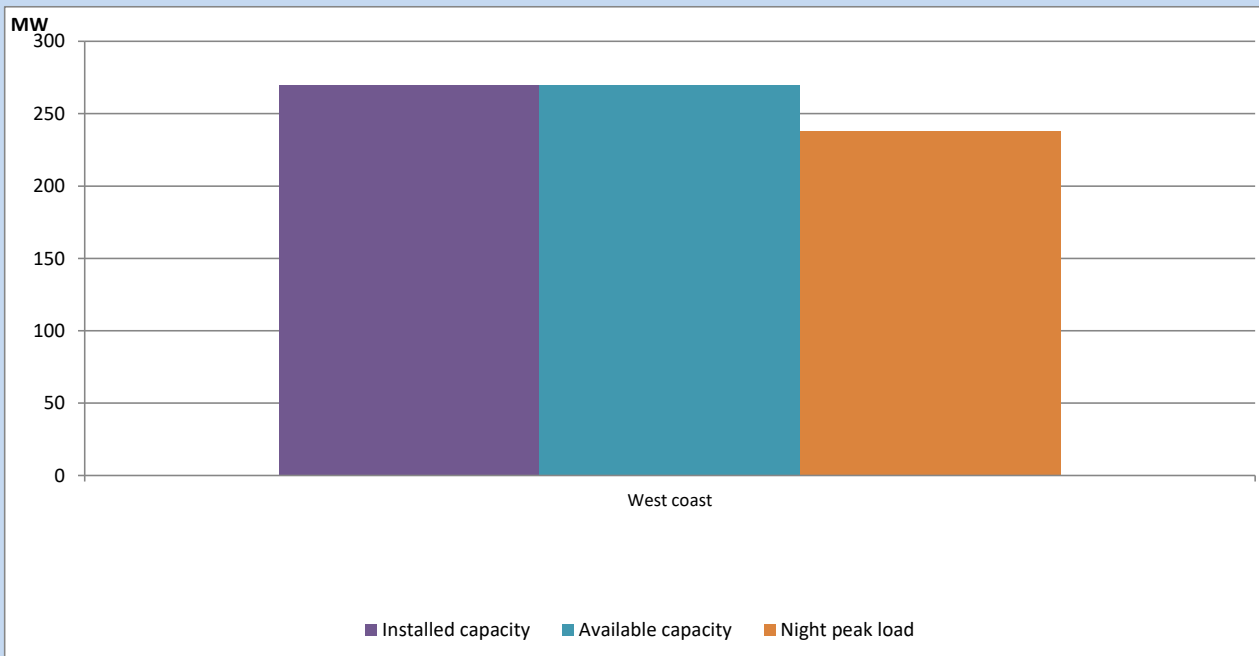
May 11, 2023



Available Generation is estimated based on plant availability at 6.00am on

May 12, 2023

IPP owned Thermal Plant Loading at the Night Peak

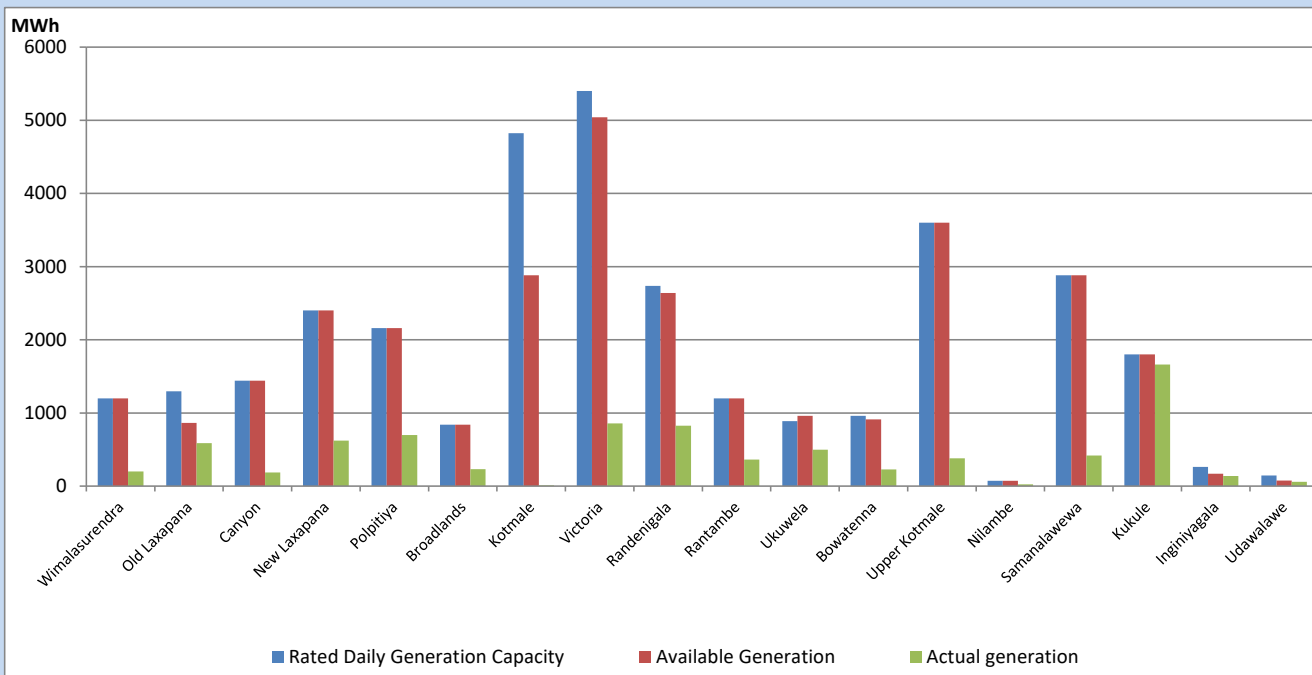


Note- Plant availability is recorded at 6.00 am on

May 12, 2023

Major Hydro Plant Dispatch

May 11, 2023

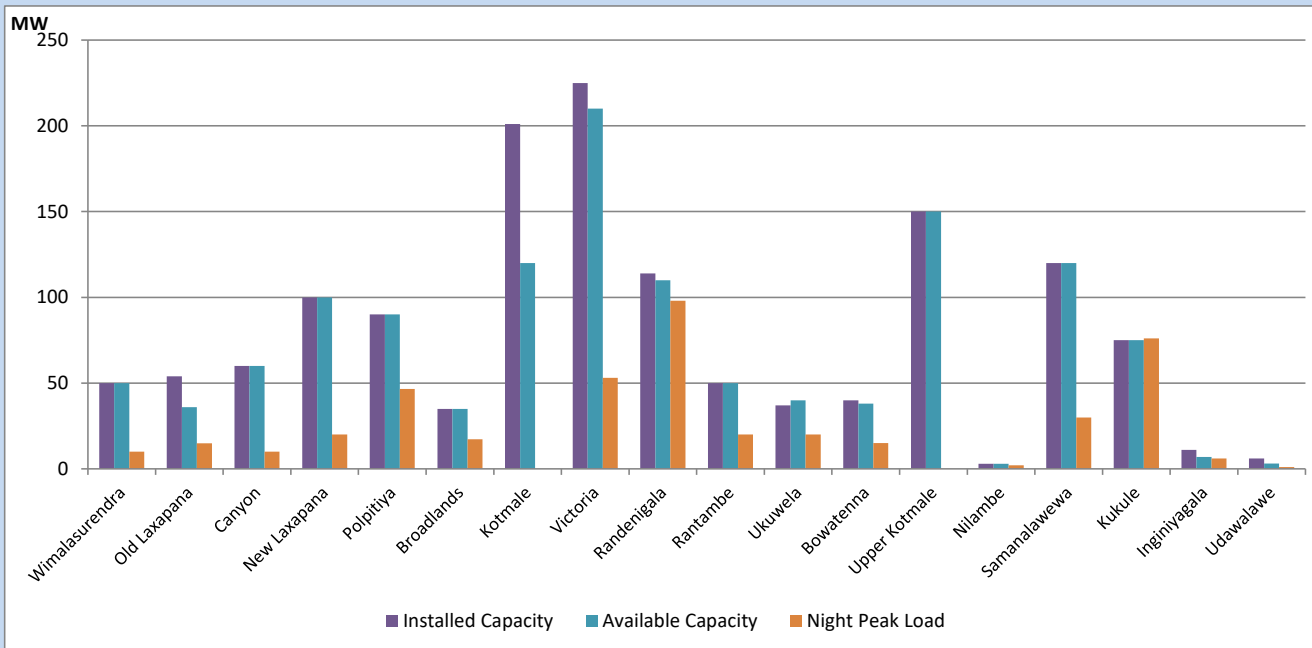


Available Generation is estimated based on plant availability at 6.00am on
Broadlands power plant is operating in the Commissioning Stage

May 12, 2023

Major Hydro Plant Loading at Night Peak

May 11, 2023



Note- Plant availability is recorded at 6.00 am on
Broadlands power plant is operating in the Commissioning Stage

May 12, 2023

Summary of Major Plant performance

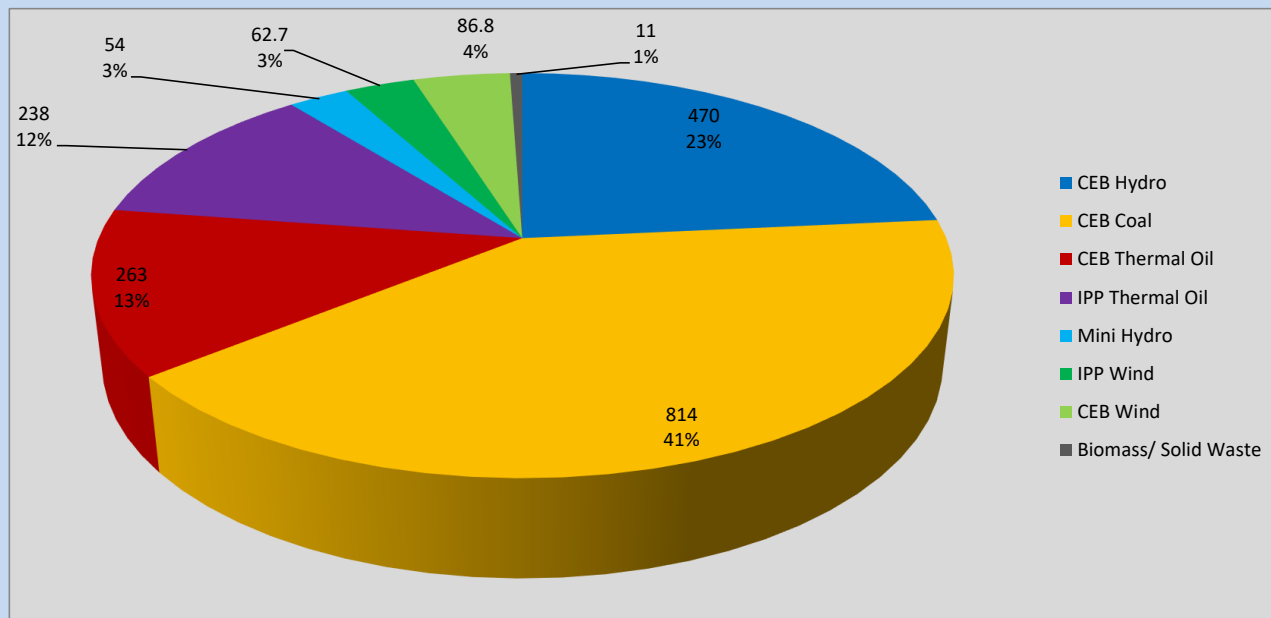
Plant	Installed Capacity	Plant Availability	Night peak Load	Plant Dispatch
	(MW)	(MW)	(MW)	(MWh)
Wimalasurendra	50	50	10	201
Old Laxapana	54	36	15	586
Canyon	60	60	10	188
New Laxapana	100	100	20	621
Polpitiya	90	90	47	699
Broadlands	35	35	17	232
Kotmale	201	120	0	10
Victoria	225	210	53	857
Randenigala	114	110	98	827
Rantambe	50	50	20	361
Ukuwela	37	40	20	498
Bowatenna	40	38	15	227
Upper Kotmale	150	150	0	379
Nilambe	3	3	2	23
Samanalawewa	120	120	30	417
Kukule	75	75	76	1,661
Inginiyagala	11	7	6	139
Udawalawe	6	3	1	59
Puttalam Coal I	270	270	274	5,820
Puttalam Coal II	270	270	269	6,024
Puttalam Coal III	270	270	271	5,929
KPS Small GTs	64	0	0	0
KPS GT 7	115	0	0	0
KCCP	161	158	138	3,380
Sapugaskanda A	70	32	22	559
Sapugaskanda B	70	54	42	1,148
Uthura Janani	26	16	12	235
Barge CEB	60	45	49	841
CEB-Hambantota	30	21	0	0
CEB-Mathugama	20	10	0	0
ACE Matara	24	0	0	0
Asia Power	50	0	0	0
KCCPS -2	163	152	0	0
West Coast	270	270	238	2,479
Nothern Power	36	0	0	0
ACE Embilipitiya	93	0	0	0
Total	3,483	2,865	1,969	40,506

Plant availability is the availability recorded at 6 am on

May 12, 2023

Contribution to the Night Peak in MW

May 11, 2023

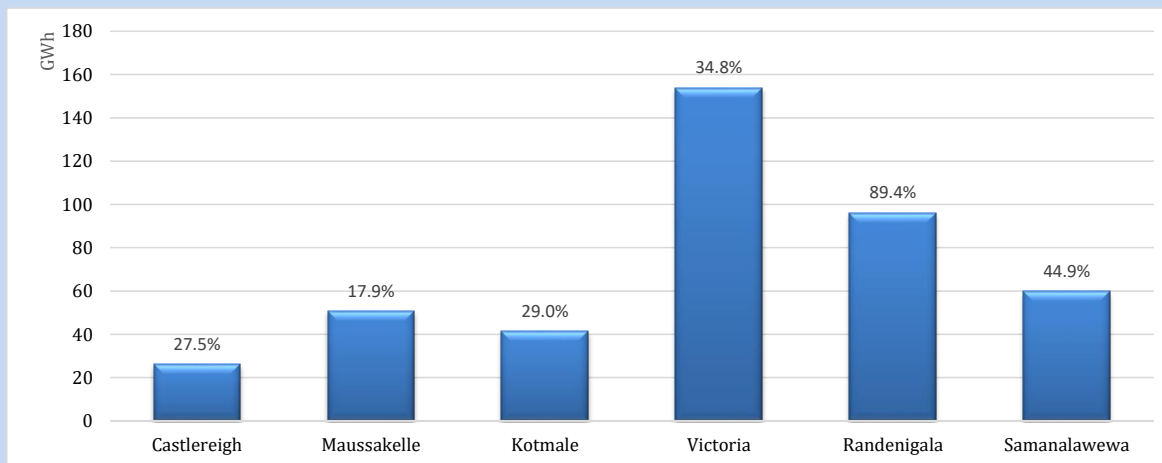


Night Peak*	1,999 MW
Day Peak	1,895 MW
Minimum Demand	1,682 MW

Above figures are excluding contribution from roof top solar, non telemetered solar and mini hydro plants

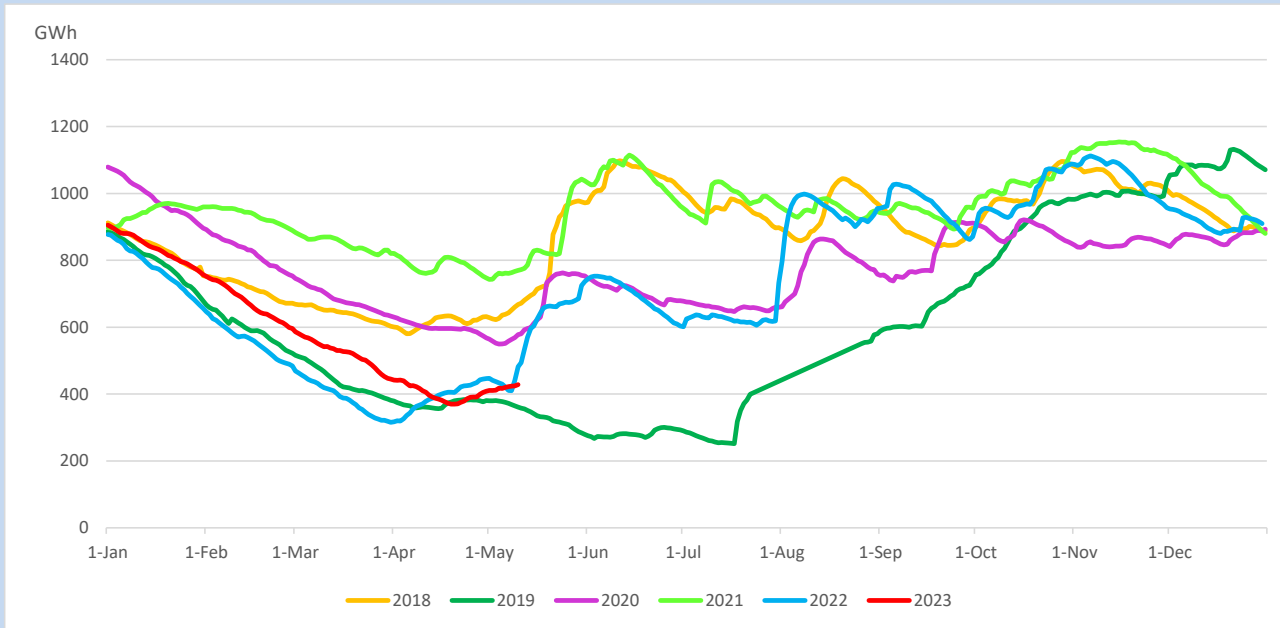
Reservoir Levels -

as at 06.00 Hr on May 12, 2023

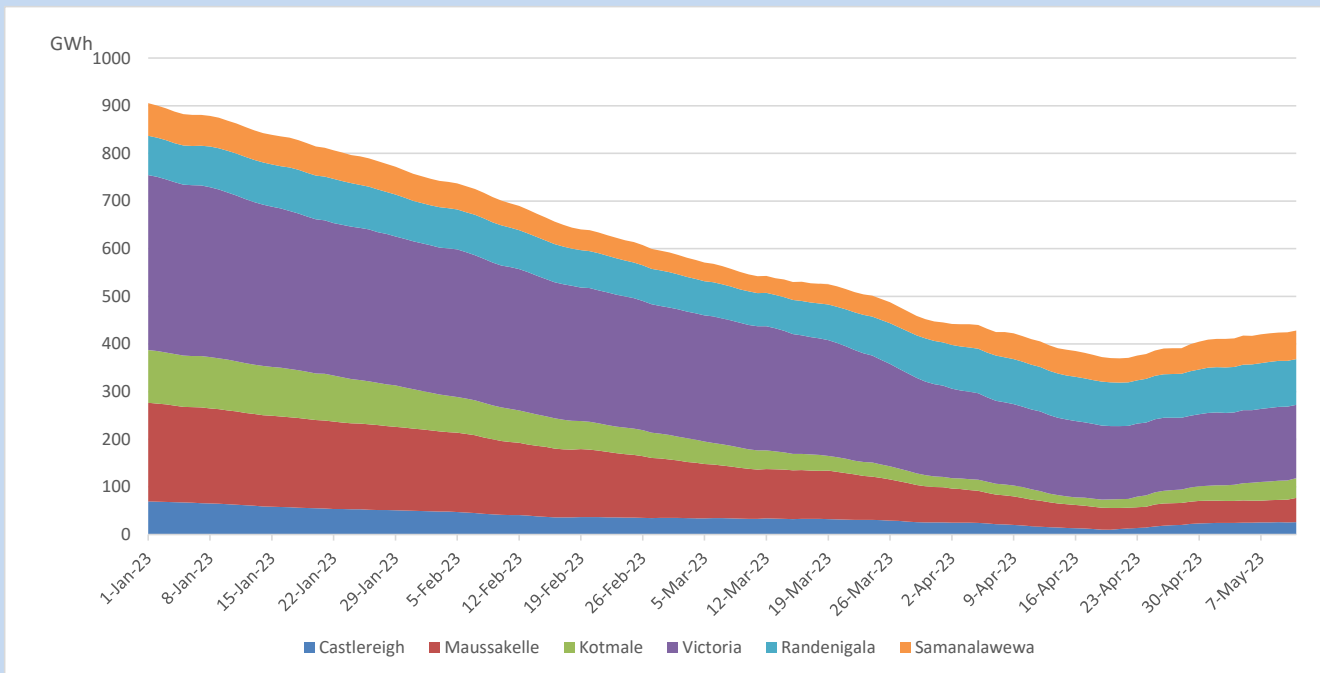


Total Reservoir Level	428.1 GWh
% of Total capacity	35.5%

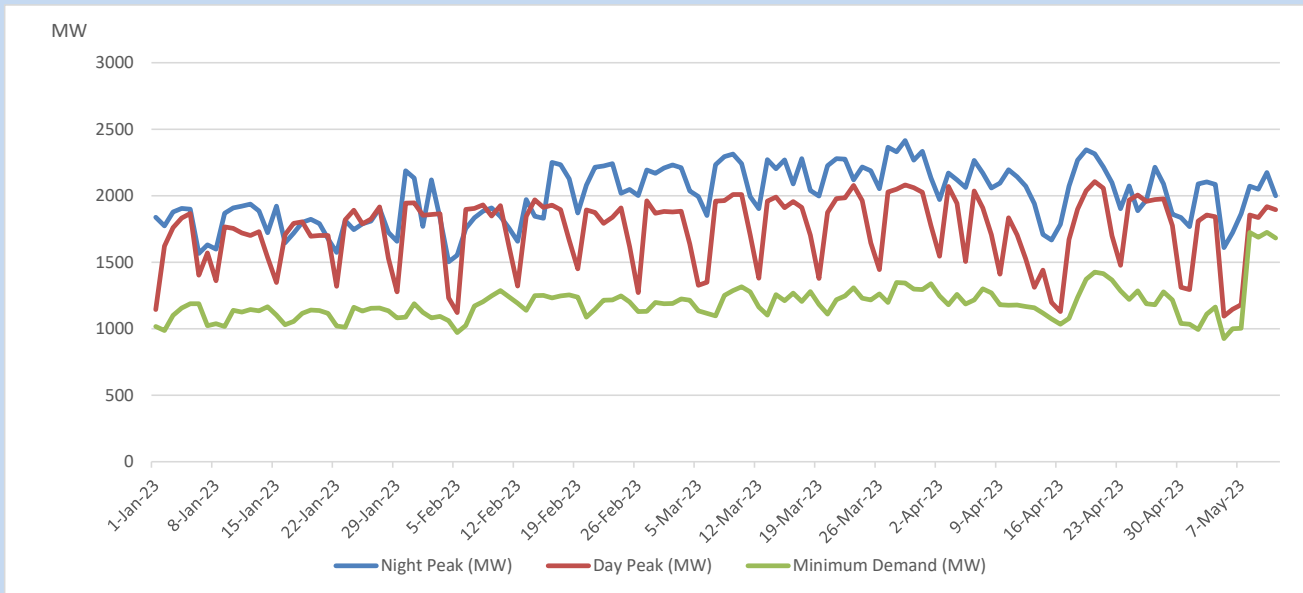
Comparison of Total Reservoir Storage Levels with Past Years



Variation of Major Hydro Reservoir Levels in the current year (GWh)



Variation of Demand during the current year

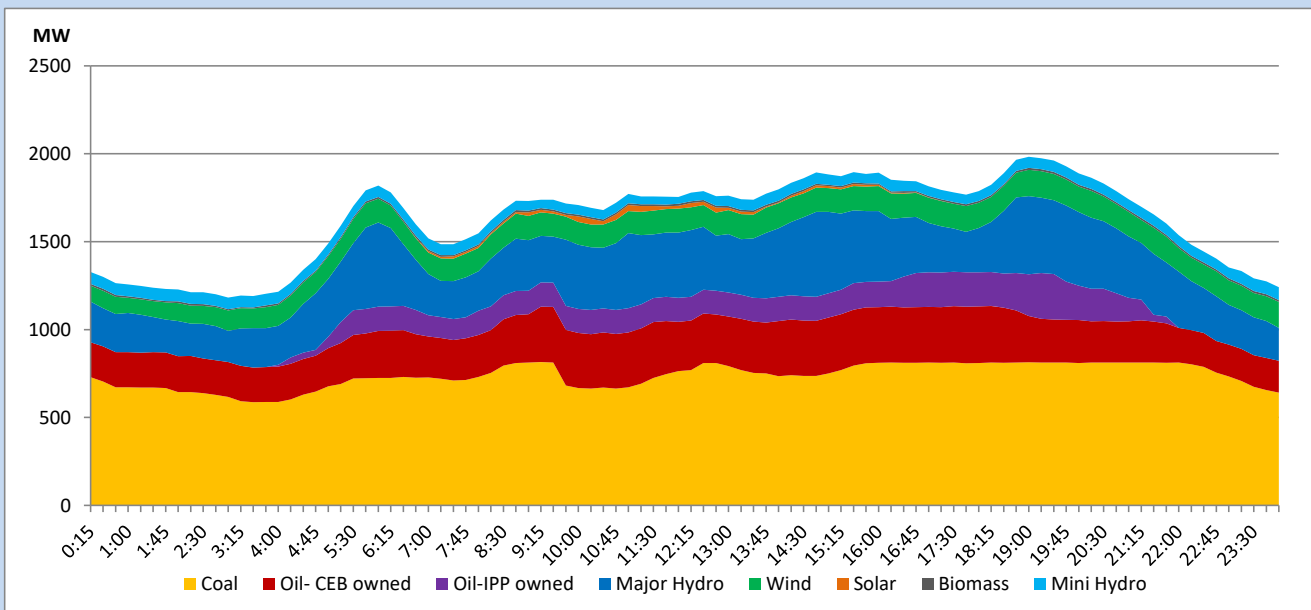


The above figures are excluding contribution from roof top solar, non telemetered solar and mini hydro plants

Daily Load Curve

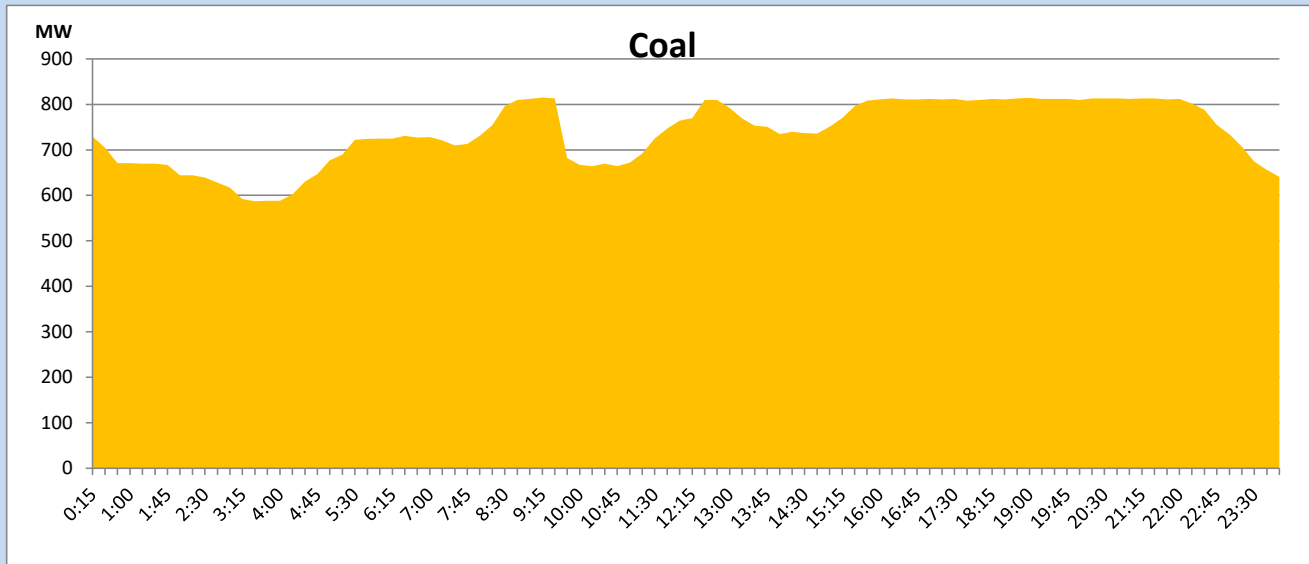
May 11, 2023

Solar and wind data is based on Telemetered Power Stations only



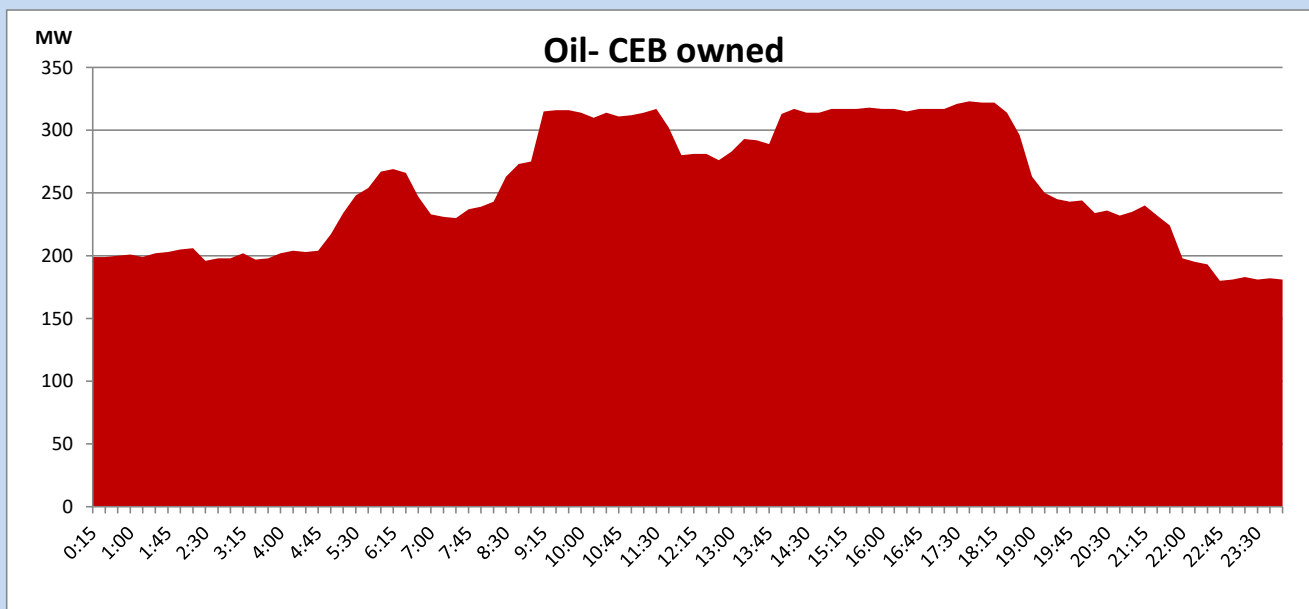
Coal Generation during

May 11, 2023



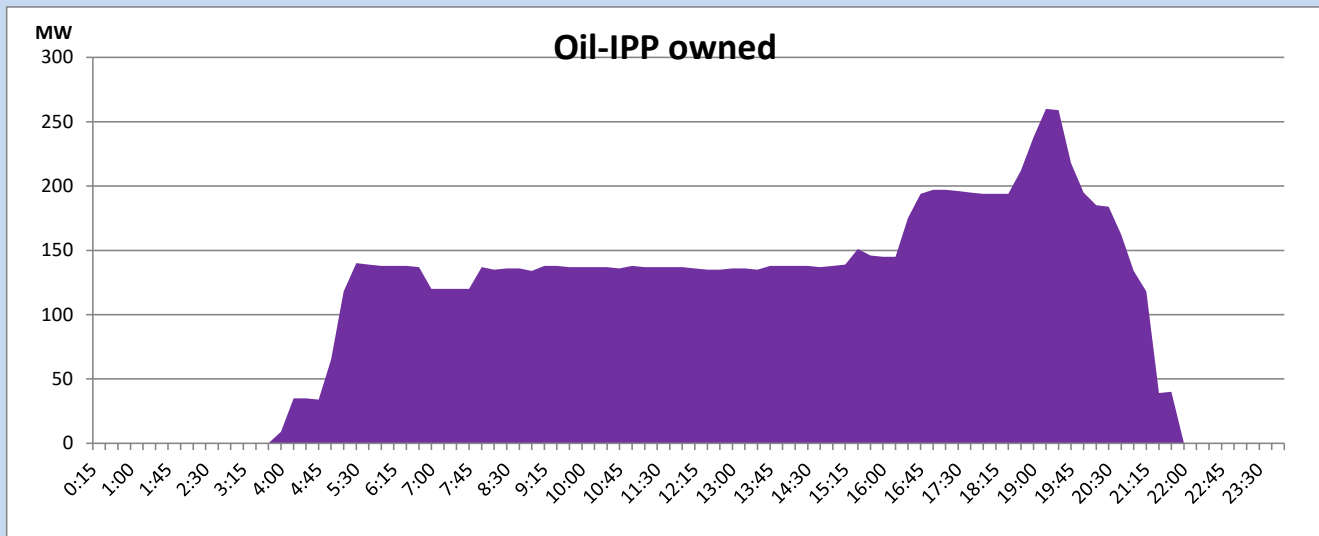
CEB Oil Plant Generation during

May 11, 2023



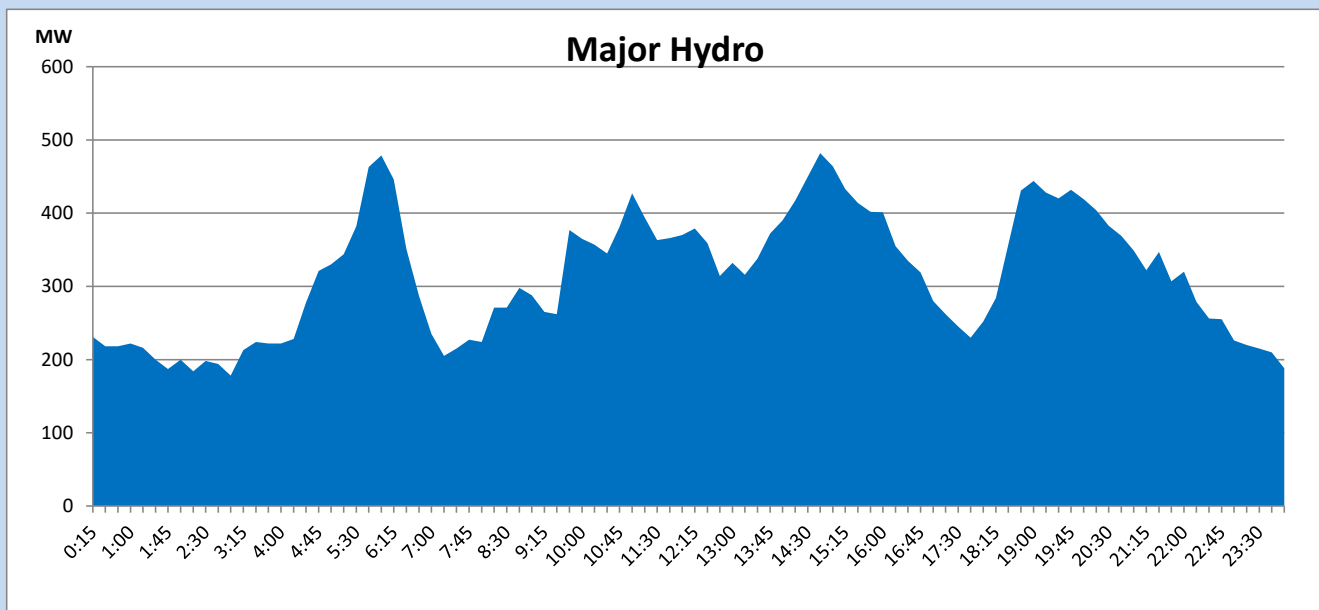
IPP Oil Plant Generation during

May 11, 2023



Major Hydro Generation during

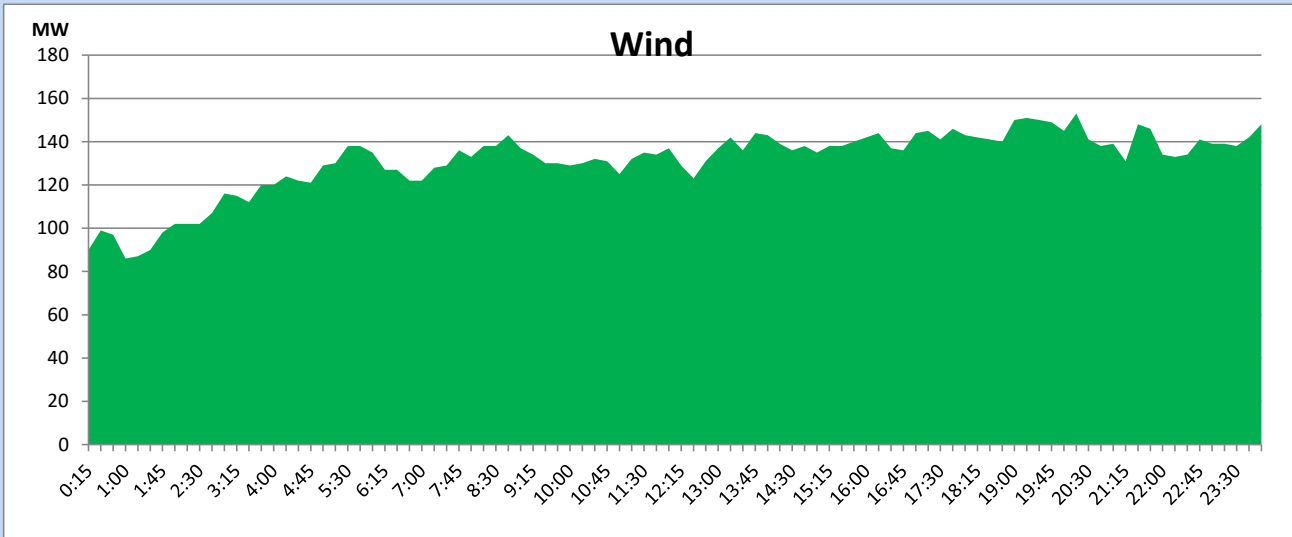
May 11, 2023



Wind Generation during

May 11, 2023

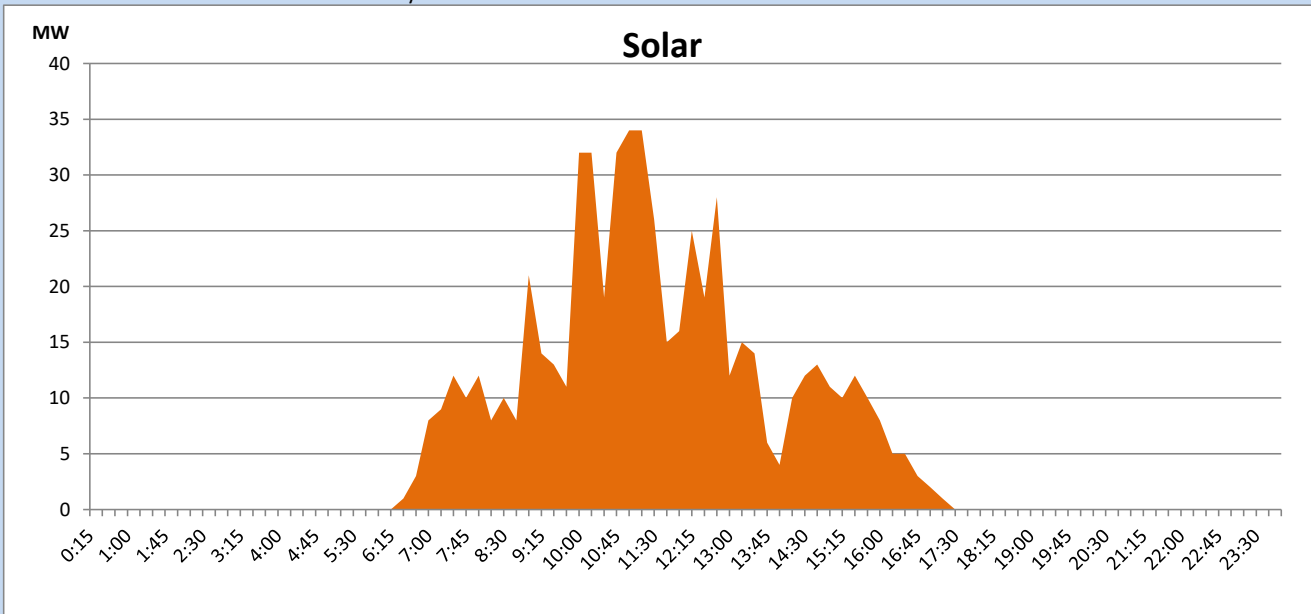
Based on Telemetered Power Stations only



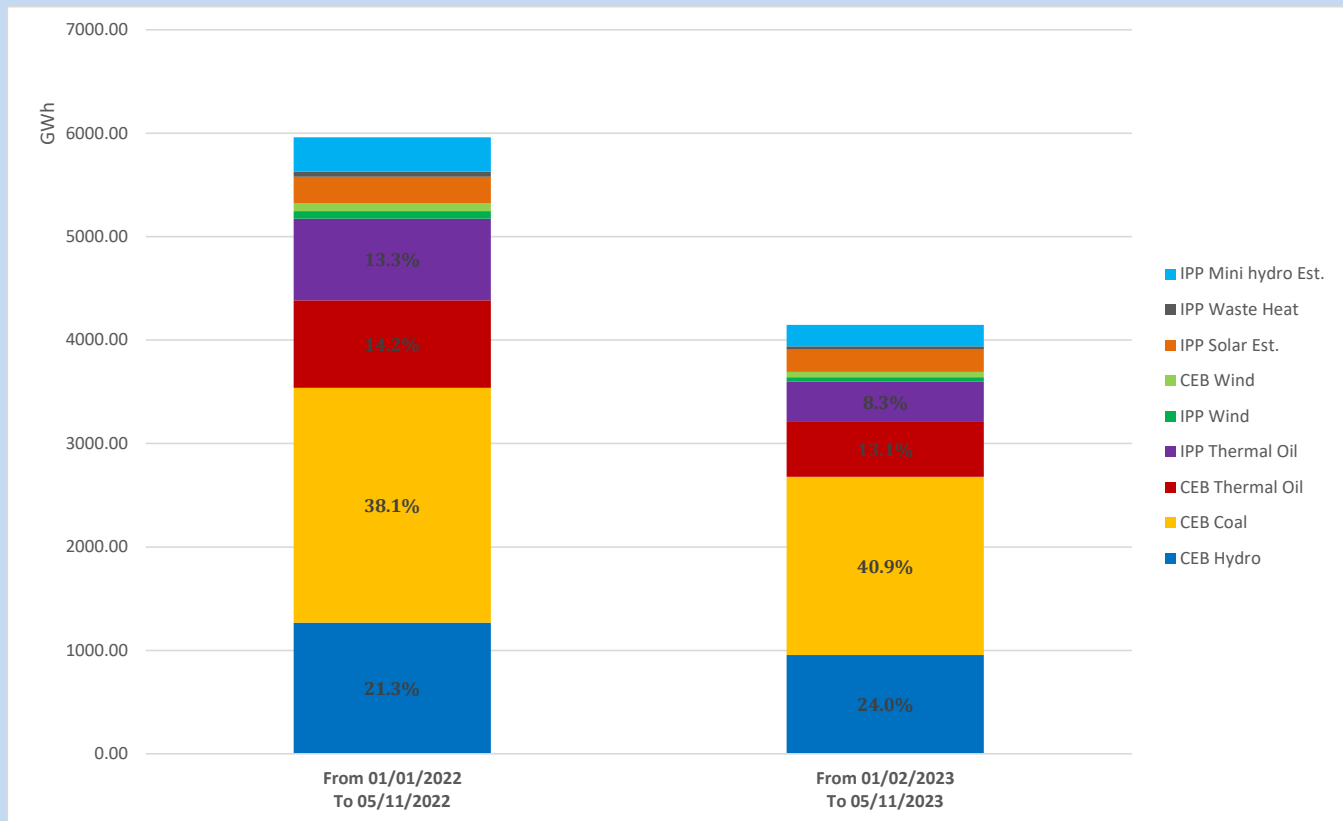
Solar Generation during

May 11, 2023

Based on Telemetered Power Stations only



Cumulative Dispatch Comparison with Last Year



The above figures are including contribution from roof top solar, non telemetered solar and mini hydro plants

Thermal Plant Fuel types

Power Station	Primary Fuel
CEB Thermal	
Sapugaskanda 1	Heavy Fuel
Sapugaskanda 2	Heavy Fuel
Kelanitissa Small Gas Turbines	Auto Diesel
GT 7 - Kelanitissa	Auto Diesel
Kelanitissa CCY	Naphtha or Diesel
Lakvijaya 1	Coal
Lakvijaya 2	Coal
Lakvijaya 3	Coal
Uthuru Janani	Heavy Fuel
Barge CEB	Heavy Fuel

Power Station	Primary Fuel
Private Thermal	
West Coast	Auto Diesel / Heavy Fuel

Major Incidents reported during the day

May 11, 2023

- 1) LVPS Unit 01 deloaded up to 130MW (net) due to tripping of a feed water pump at 09:42hrs. The Unit reached full load at 12:20hrs.
- 2) Kelaniya – Kotugoda 132kV cct tripped from Kotugoda end only at 13:22hrs and the circuit was restored at 13:31hrs.